

IR BT & Lightning

t: 2020081418 (13.2 LT)

Lightning: 13.2 LT \pm 1.5 h (dots)

PT: SLCP | EA: QUASI

12L (KYLE) | 35 kt TS

S: 5.3 m s⁻¹ (M) | H: 83°

6-h IR BT Differences & Lightning

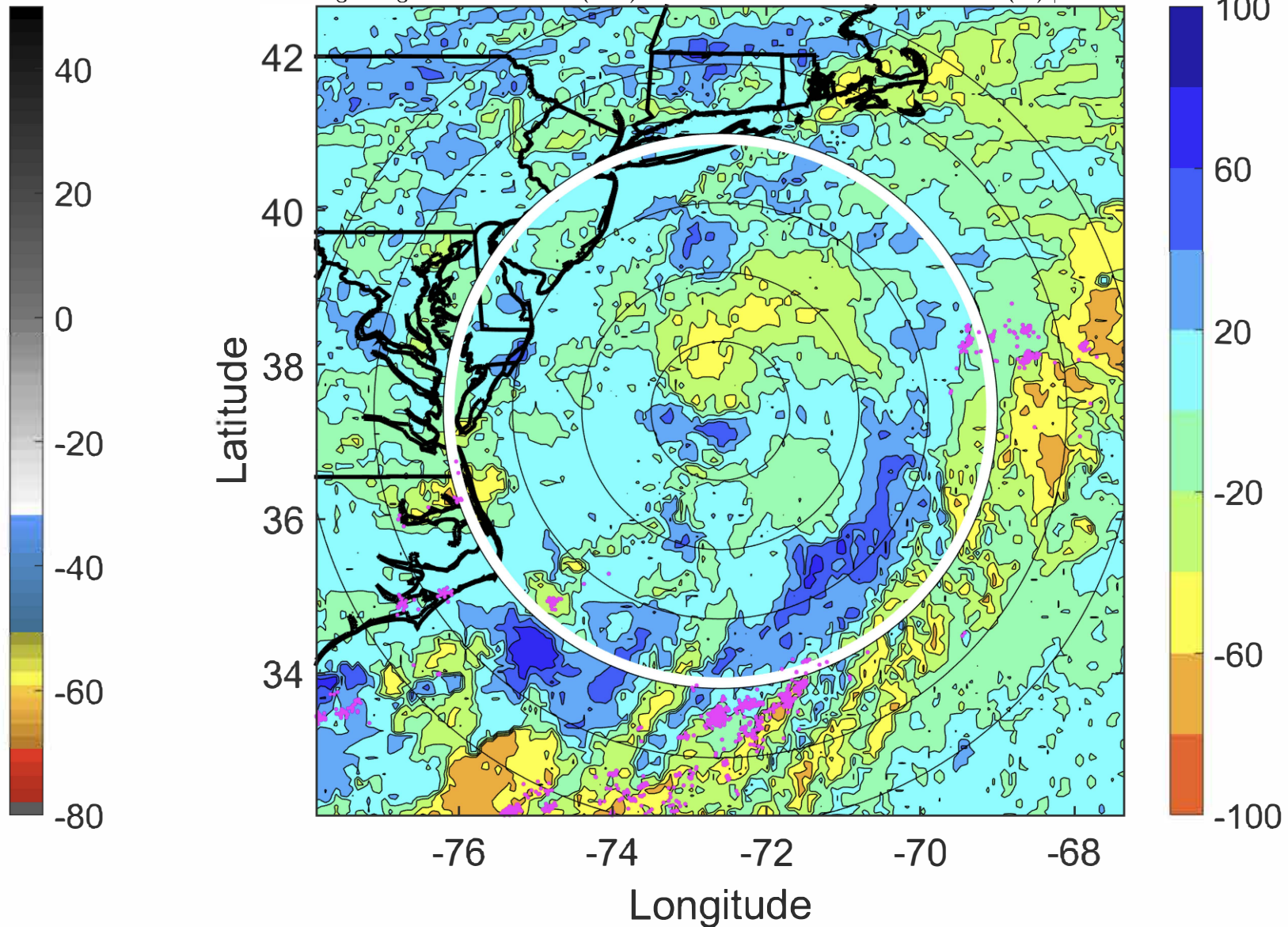
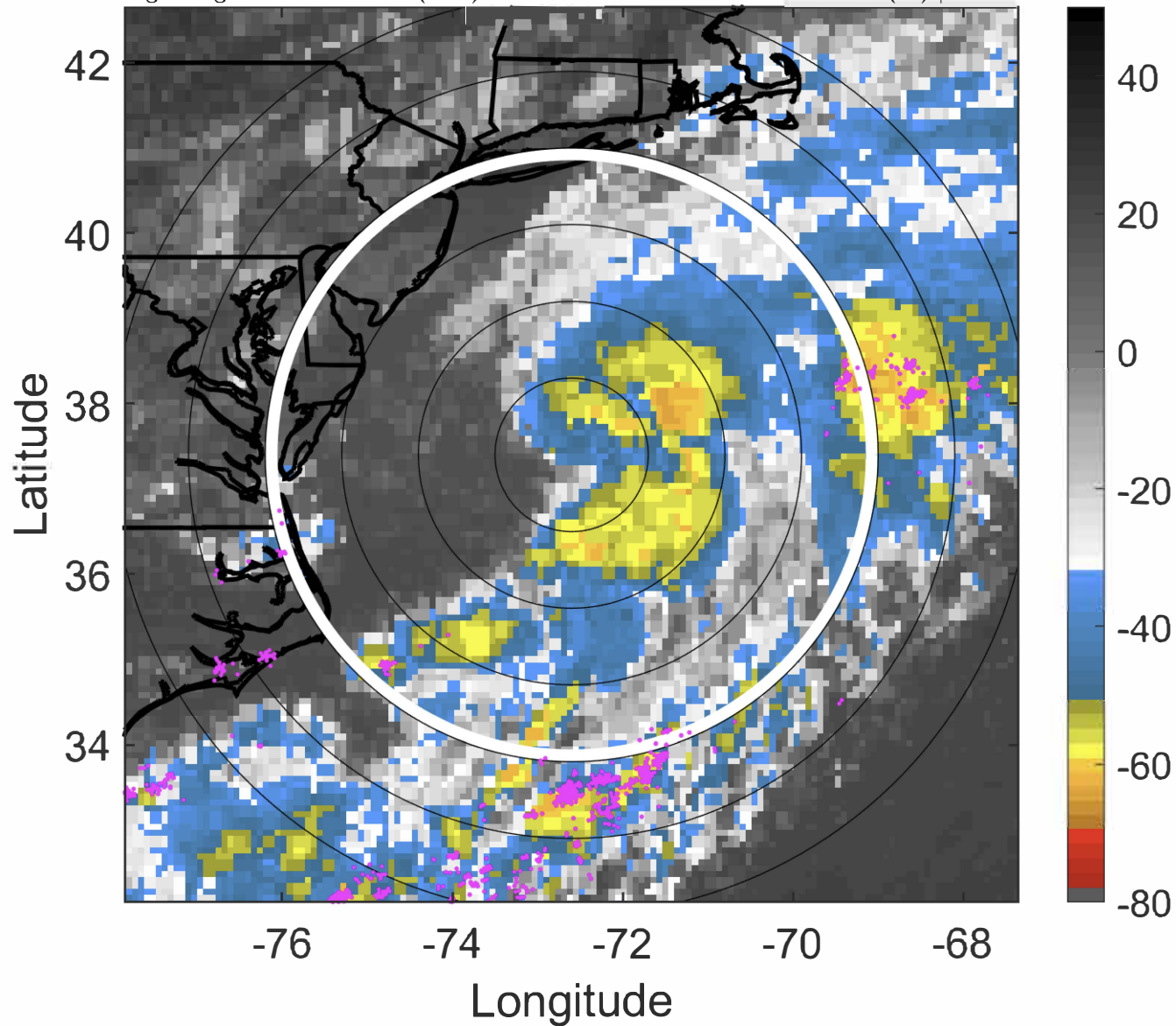
Δ t: 2020081418 (13.2 LT) - 2020081412 (7.1 LT)

Lightning: 13.2 LT \pm 1.5 h (dots)

PT: SLCP | EA: QUASI

12L (KYLE) | 35 kt TS

S: 5.3 m s⁻¹ (M) | H: 83°



IR BT & Lightning

t: 2020081421 (16.2 LT)

Lightning: 16.2 LT \pm 1.5 h (dots)

PT: SLCP | EA: QUASI

12L (KYLE) | 37.5 kt TS

S: 6.4 m s⁻¹ (M) | H: 82.5°

6-h IR BT Differences & Lightning

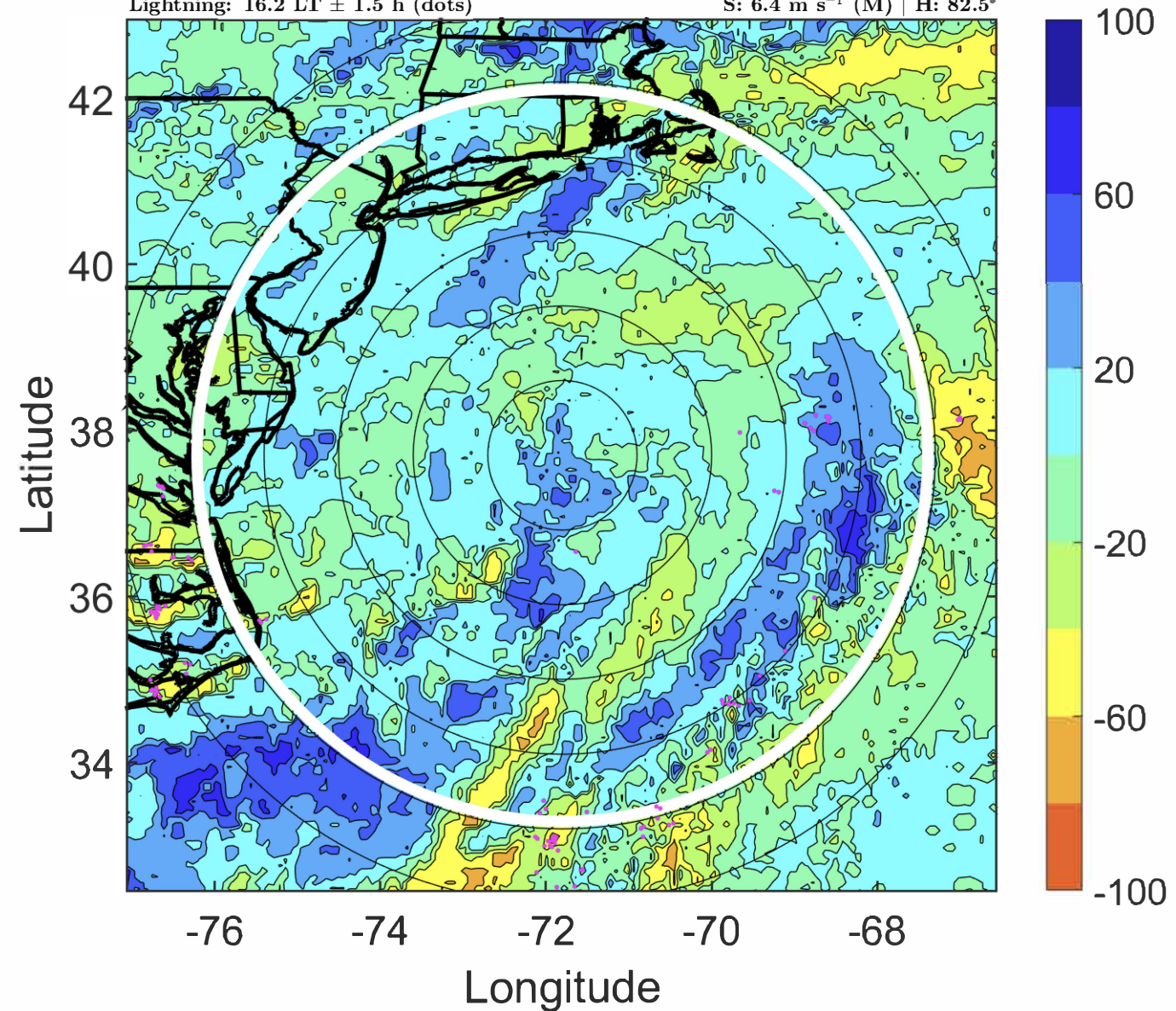
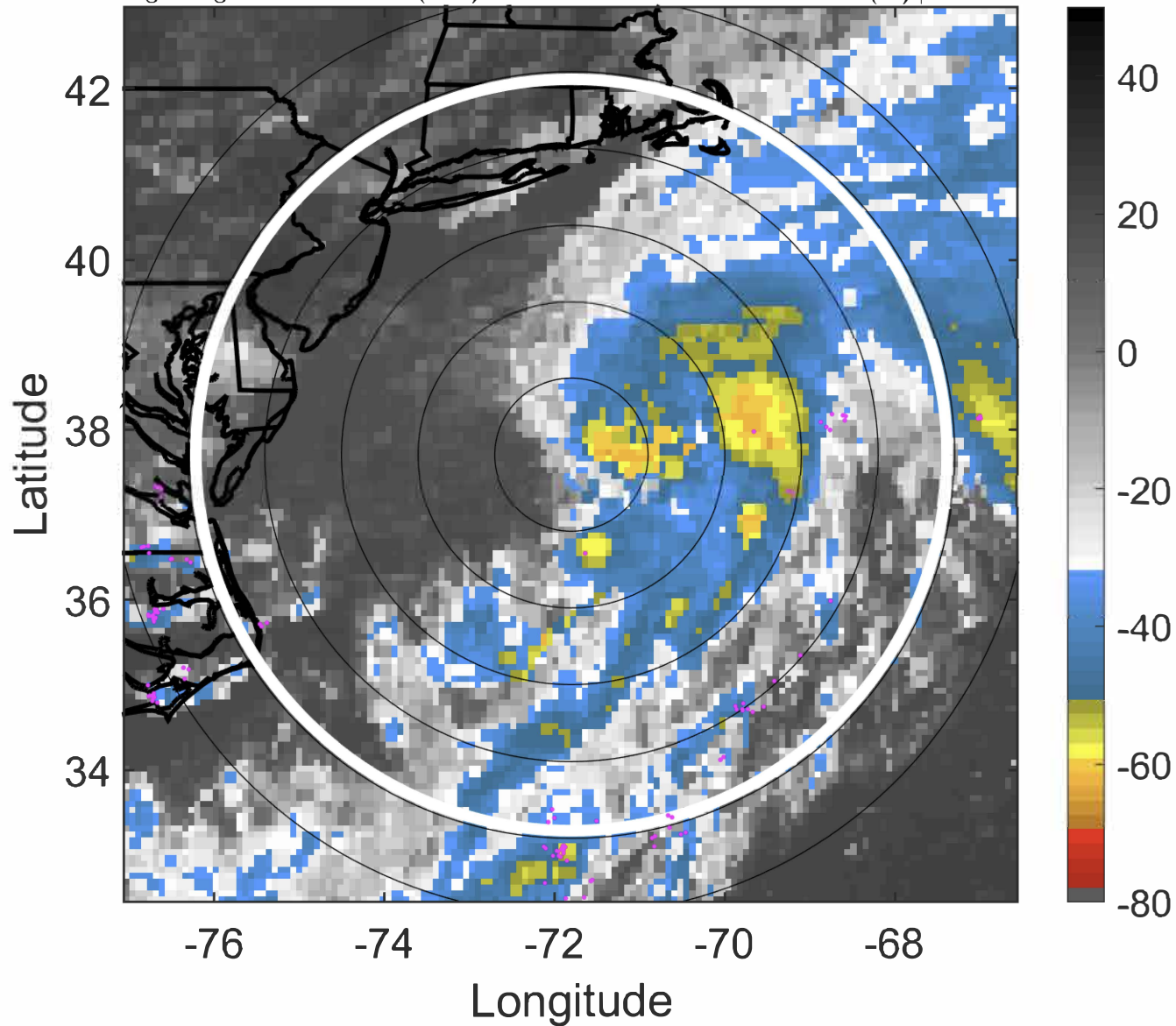
Δ t: 2020081421 (16.2 LT) - 2020081415 (10.1 LT)

Lightning: 16.2 LT \pm 1.5 h (dots)

PT: SLCP | EA: QUASI

12L (KYLE) | 37.5 kt TS

S: 6.4 m s⁻¹ (M) | H: 82.5°



IR BT & Lightning

t: 2020081500 (19.3 LT)

Lightning: 19.3 LT \pm 1.5 h (dots)

PT: SLCP | EA: QUASI

12L (KYLE) | 40 kt TS

S: 7.6 m s⁻¹ (M) | H: 82°

6-h IR BT Differences & Lightning

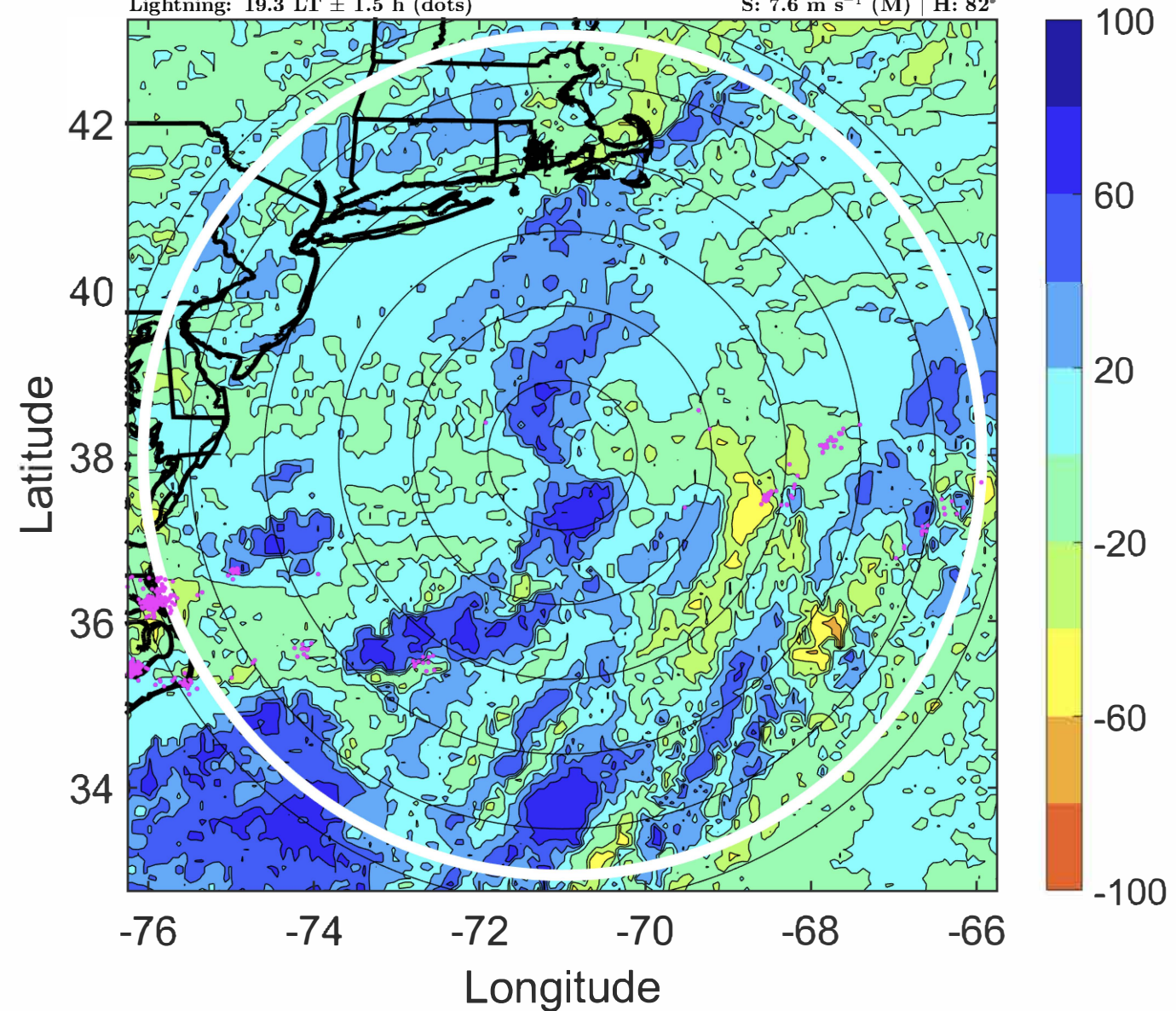
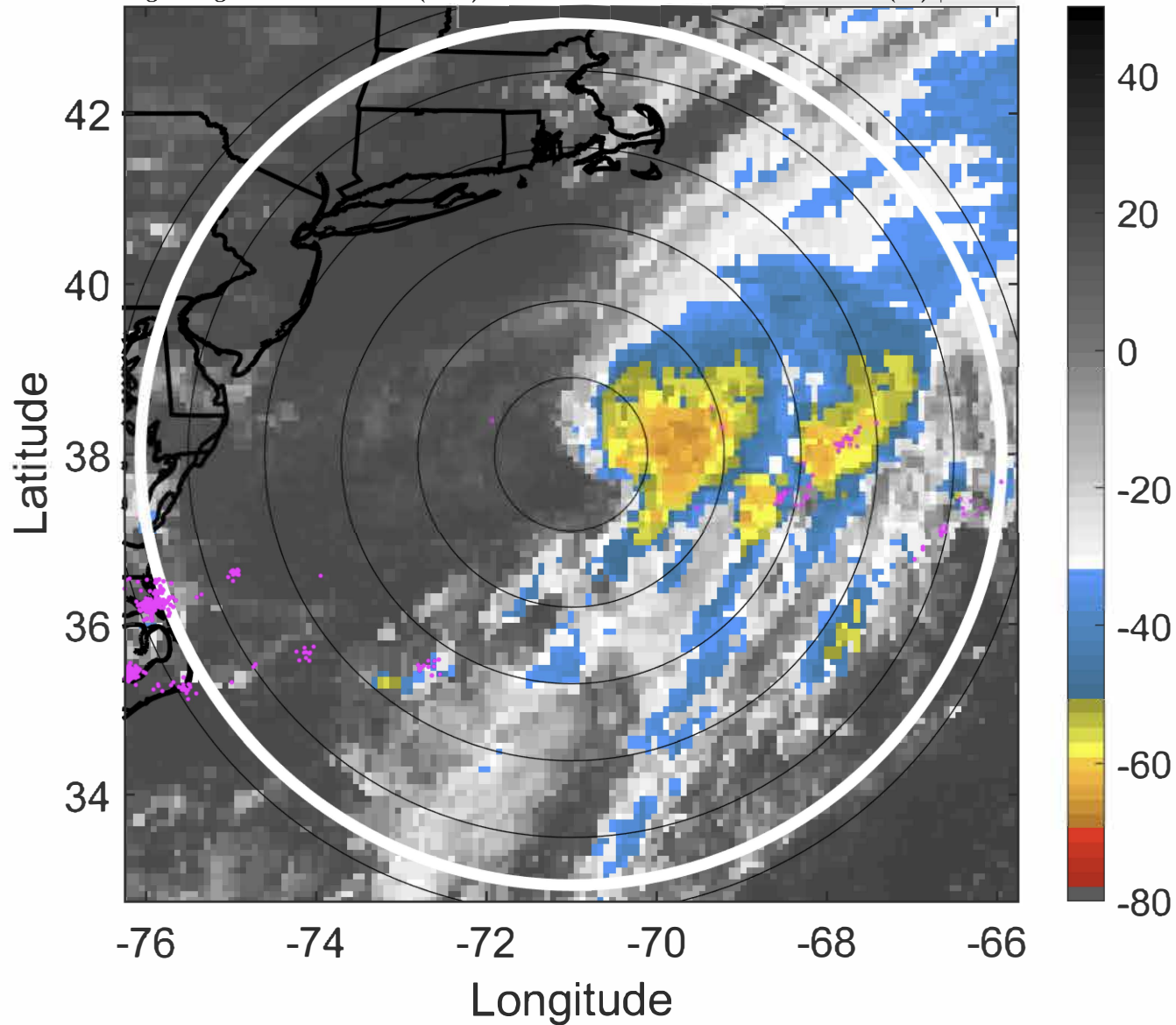
Δ t: 2020081500 (19.3 LT) - 2020081418 (13.2 LT)

Lightning: 19.3 LT \pm 1.5 h (dots)

PT: SLCP | EA: QUASI

12L (KYLE) | 40 kt TS

S: 7.6 m s⁻¹ (M) | H: 82°



IR BT & Lightning

t: 2020081503 (22.3 LT)

Lightning: 22.3 LT \pm 1.5 h (dots)

PT: SLCP | EA: QUASI

12L (KYLE) | 42.5 kt TS

S: 7.4 m s⁻¹ (M) | H: 85°

6-h IR BT Differences & Lightning

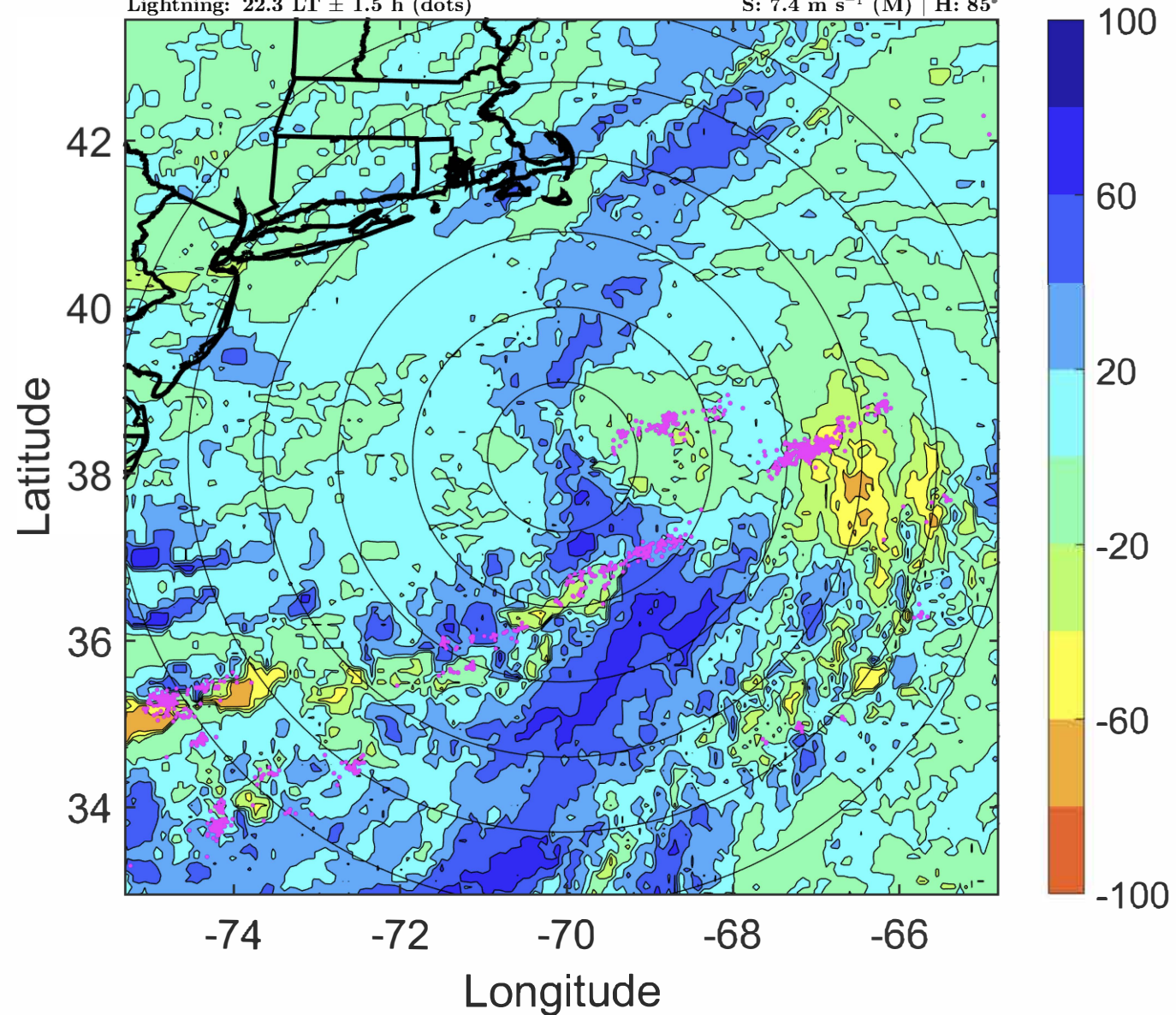
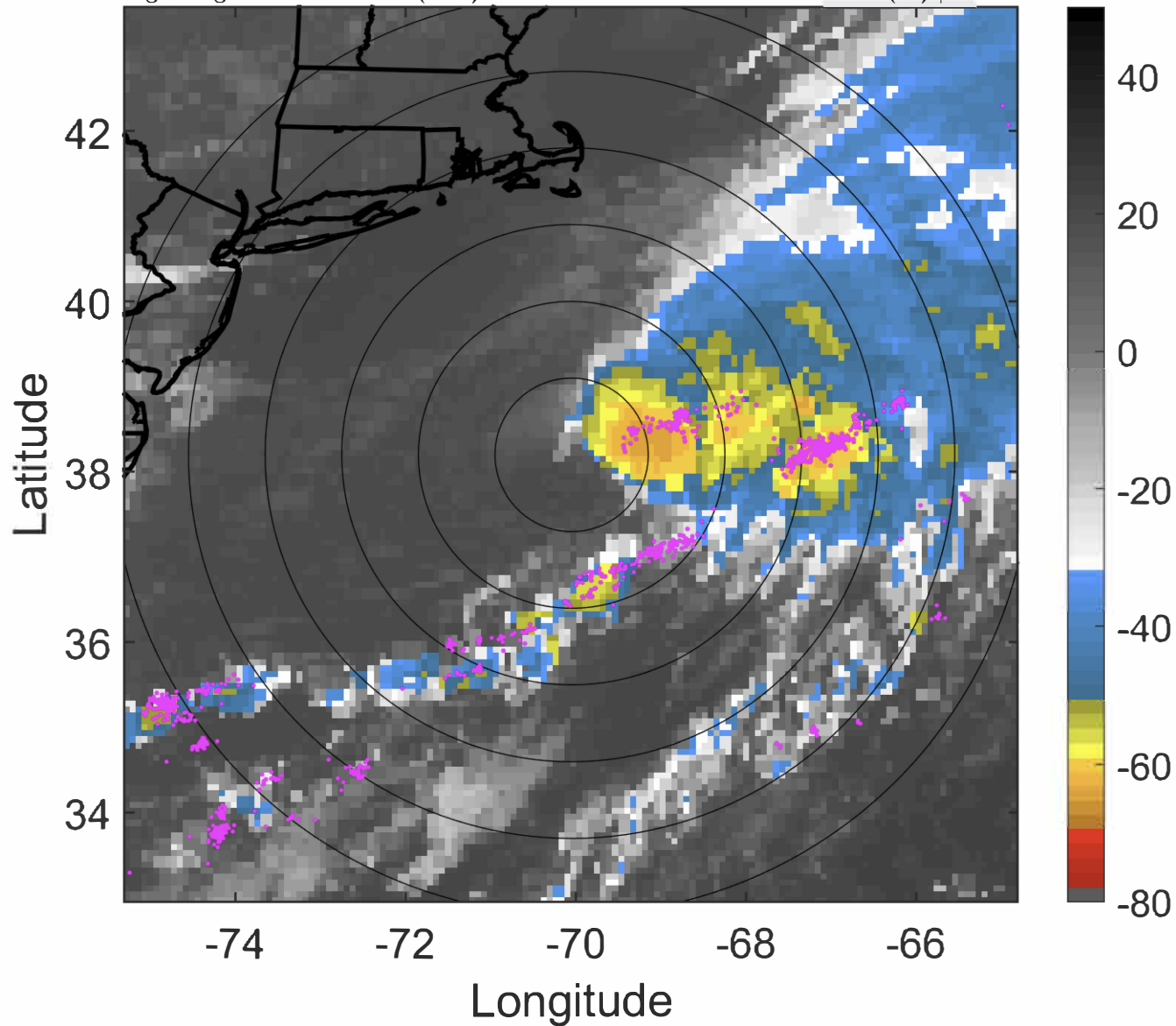
Δ t: 2020081503 (22.3 LT) - 2020081421 (16.2 LT)

Lightning: 22.3 LT \pm 1.5 h (dots)

PT: SLCP | EA: QUASI

12L (KYLE) | 42.5 kt TS

S: 7.4 m s⁻¹ (M) | H: 85°



IR BT & Lightning

t: 2020081506 (1.4 LT)

Lightning: 1.4 LT \pm 1.5 h (dots)

PT: LLWP | EA: INACT

12L (KYLE) | 45 kt TS

S: 7.3 m s⁻¹ (M) | H: 88°

6-h IR BT Differences & Lightning

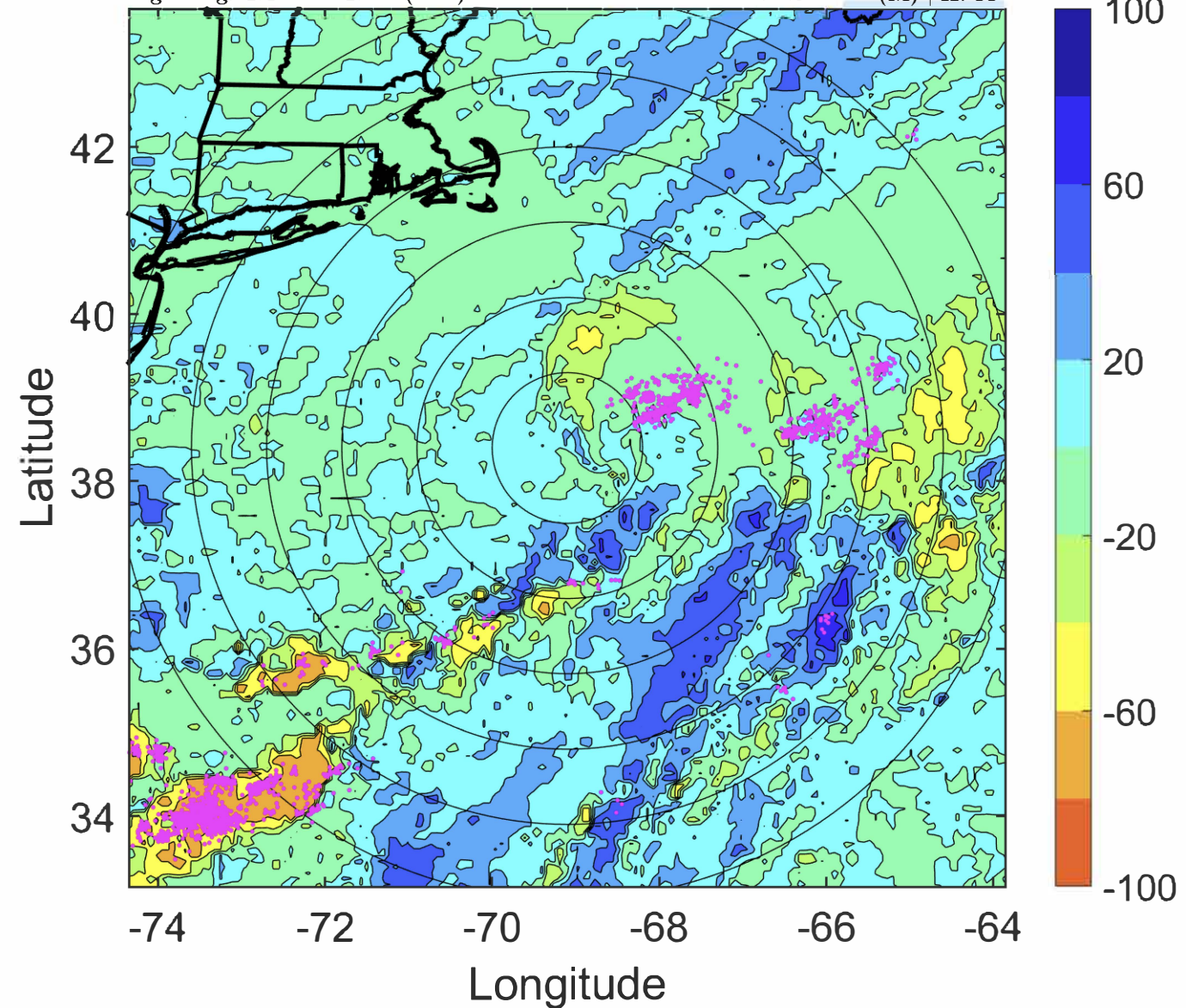
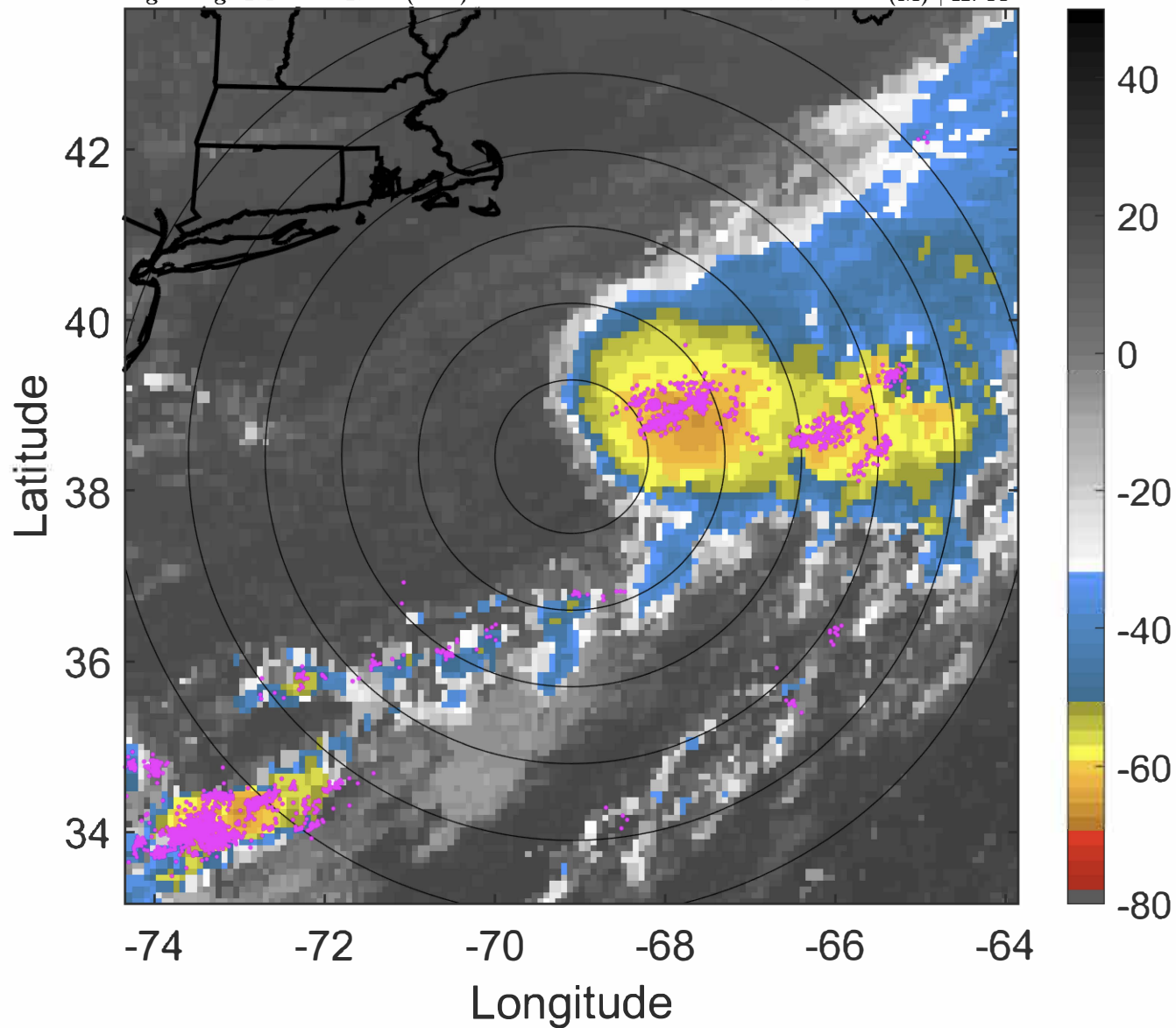
Δ t: 2020081506 (1.4 LT) - 2020081500 (19.3 LT)

Lightning: 1.4 LT \pm 1.5 h (dots)

PT: LLWP | EA: INACT

12L (KYLE) | 45 kt TS

S: 7.3 m s⁻¹ (M) | H: 88°



IR BT & Lightning

t: 2020081509 (4.5 LT)

Lightning: 4.5 LT \pm 1.5 h (dots)

PT: LLWP | EA: INACT

12L (KYLE) | 45 kt TS

S: 7.1 m s⁻¹ (M) | H: 81°

6-h IR BT Differences & Lightning

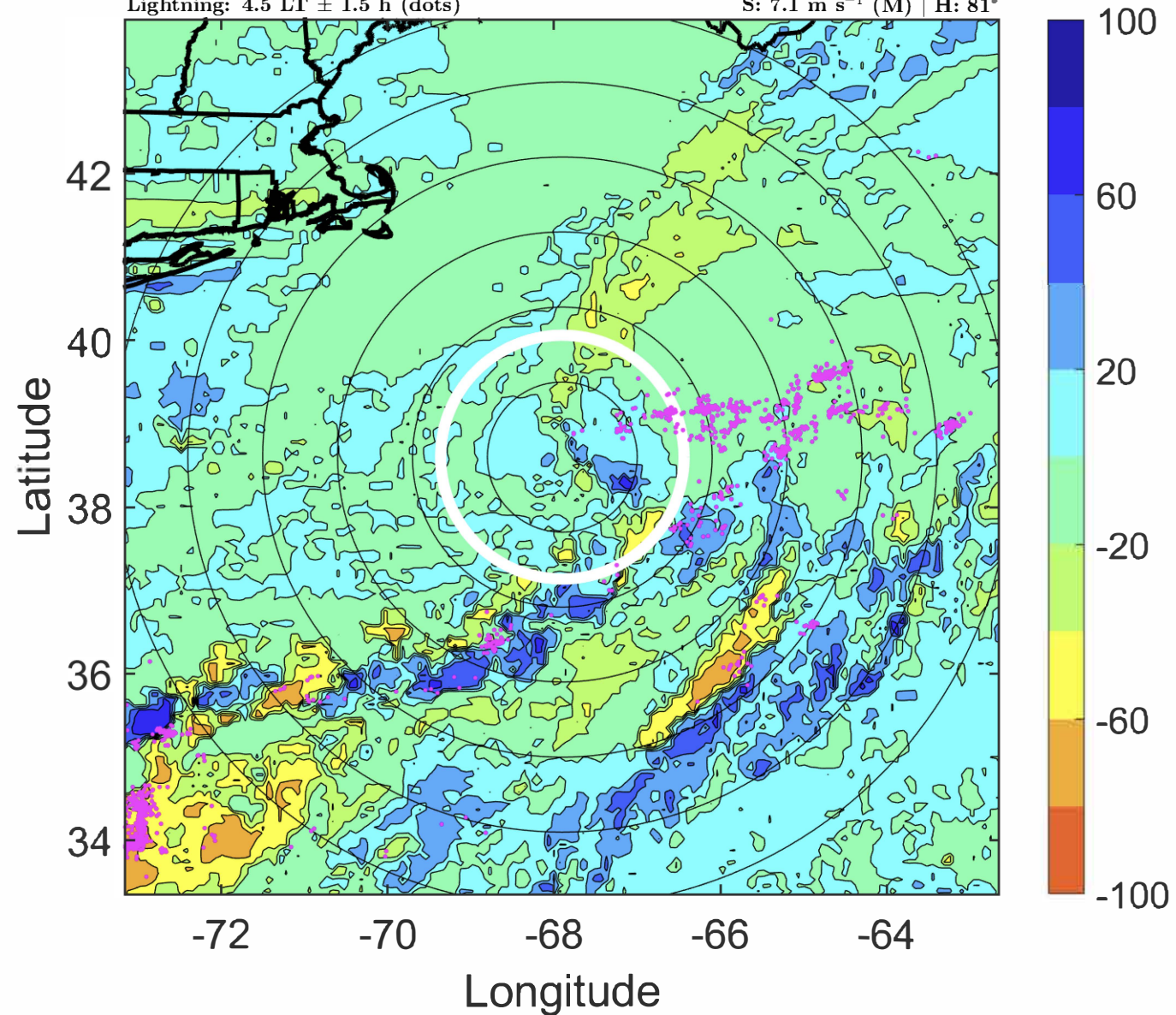
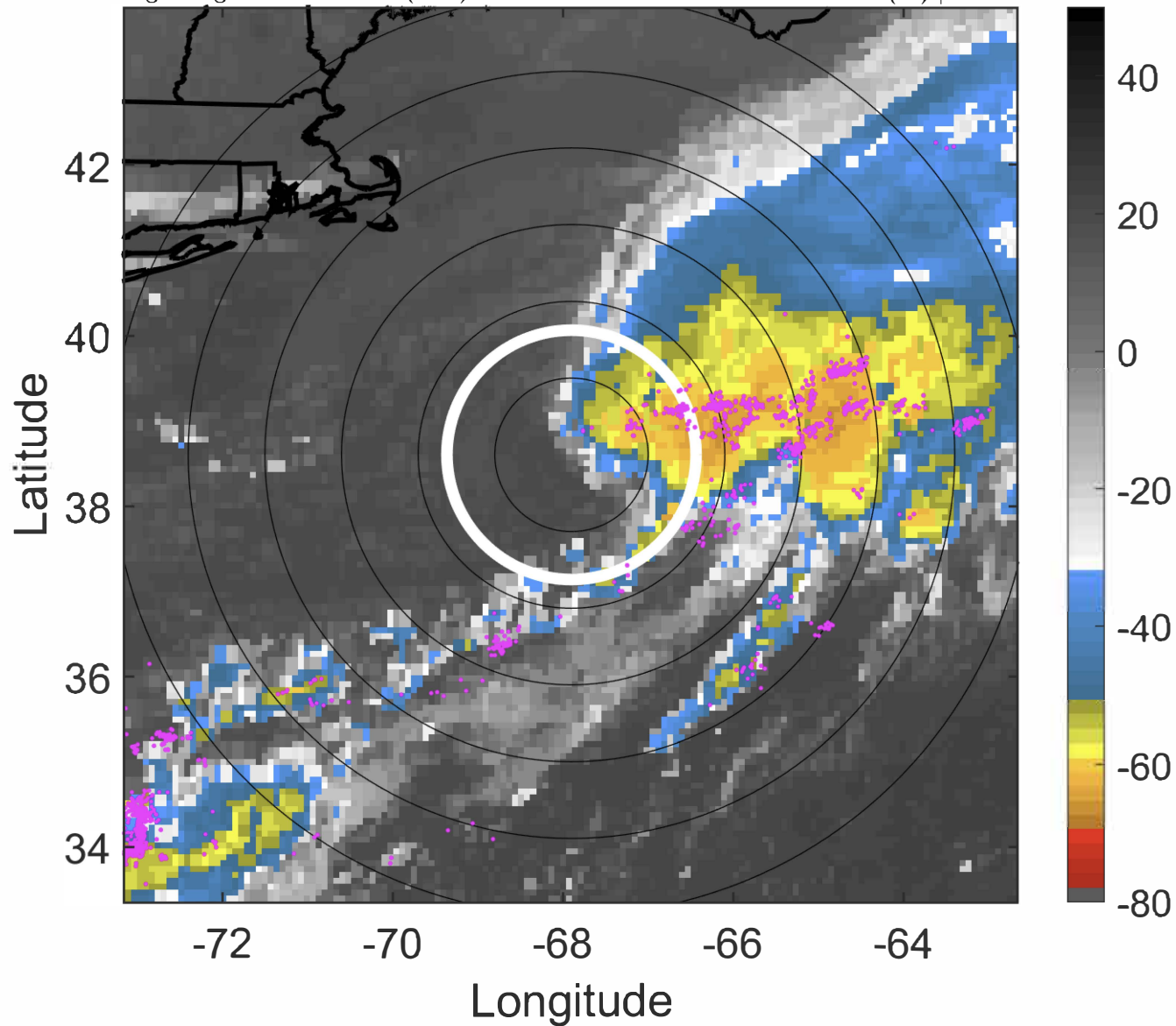
Δ t: 2020081509 (4.5 LT) - 2020081503 (22.3 LT)

Lightning: 4.5 LT \pm 1.5 h (dots)

PT: LLWP | EA: INACT

12L (KYLE) | 45 kt TS

S: 7.1 m s⁻¹ (M) | H: 81°



IR BT & Lightning

t: 2020081512 (7.6 LT)

Lightning: 7.6 LT \pm 1.5 h (dots)

PT: LLWP | EA: INACT

12L (KYLE) | 45 kt TS

S: 7 m s⁻¹ (M) | H: 74°

6-h IR BT Differences & Lightning

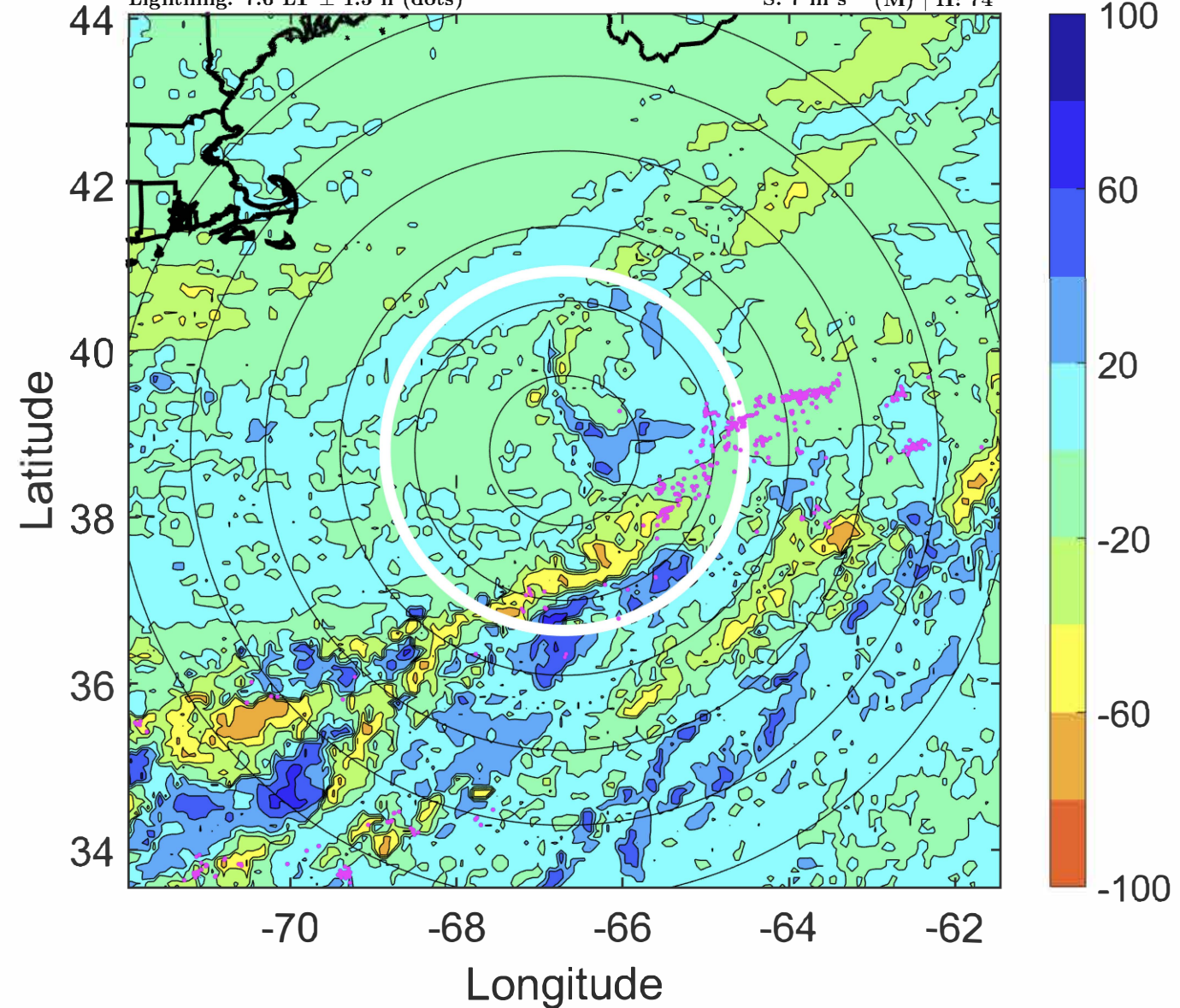
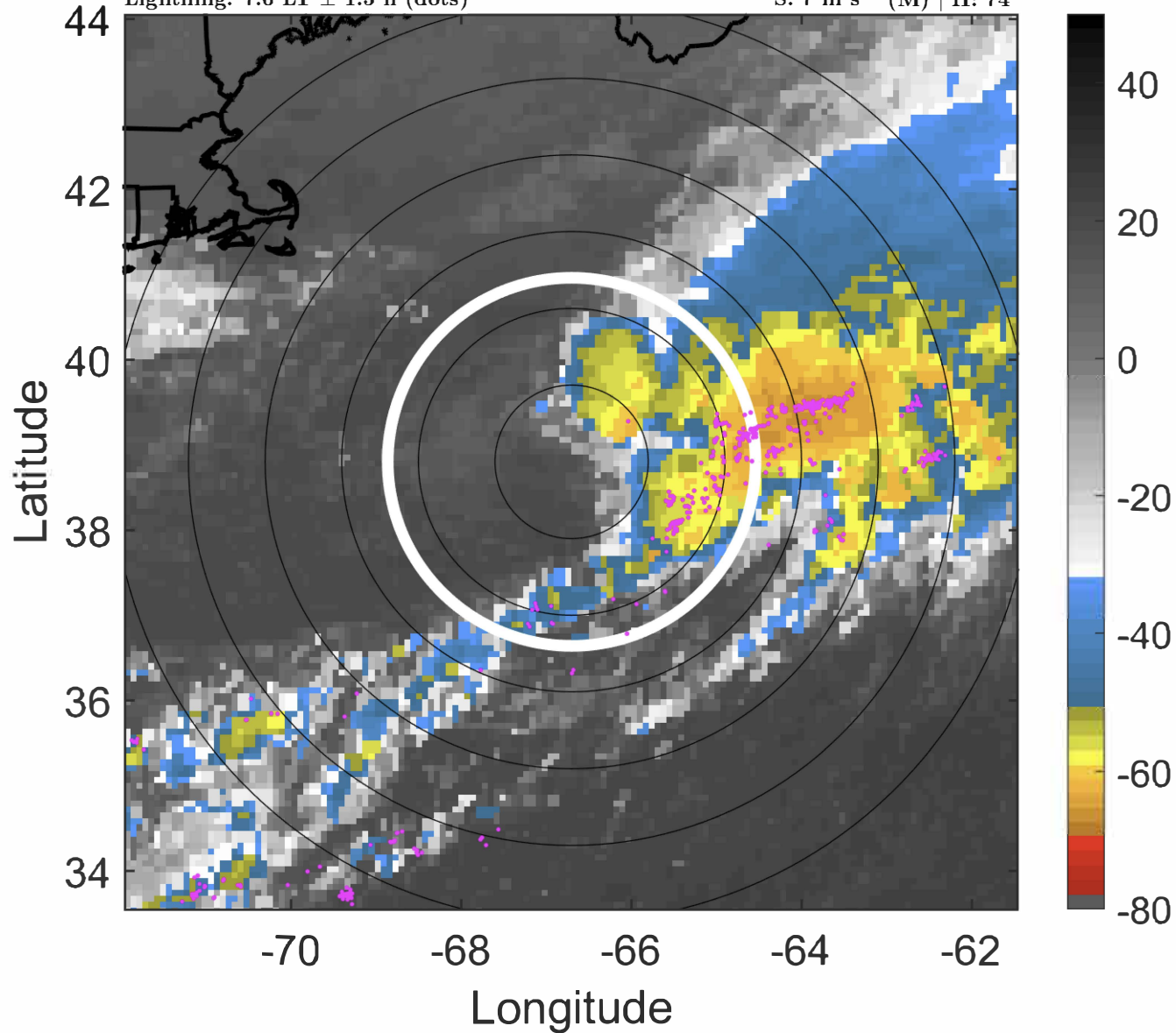
Δ t: 2020081512 (7.6 LT) - 2020081506 (1.4 LT)

Lightning: 7.6 LT \pm 1.5 h (dots)

PT: LLWP | EA: INACT

12L (KYLE) | 45 kt TS

S: 7 m s⁻¹ (M) | H: 74°



IR BT & Lightning

t: 2020081515 (10.6 LT)

Lightning: 10.6 LT \pm 1.5 h (dots)

PT: LLWP | EA: INACT

12L (KYLE) | 42.5 kt TS

S: 7.7 m s⁻¹ (M) | H: 72.5°

6-h IR BT Differences & Lightning

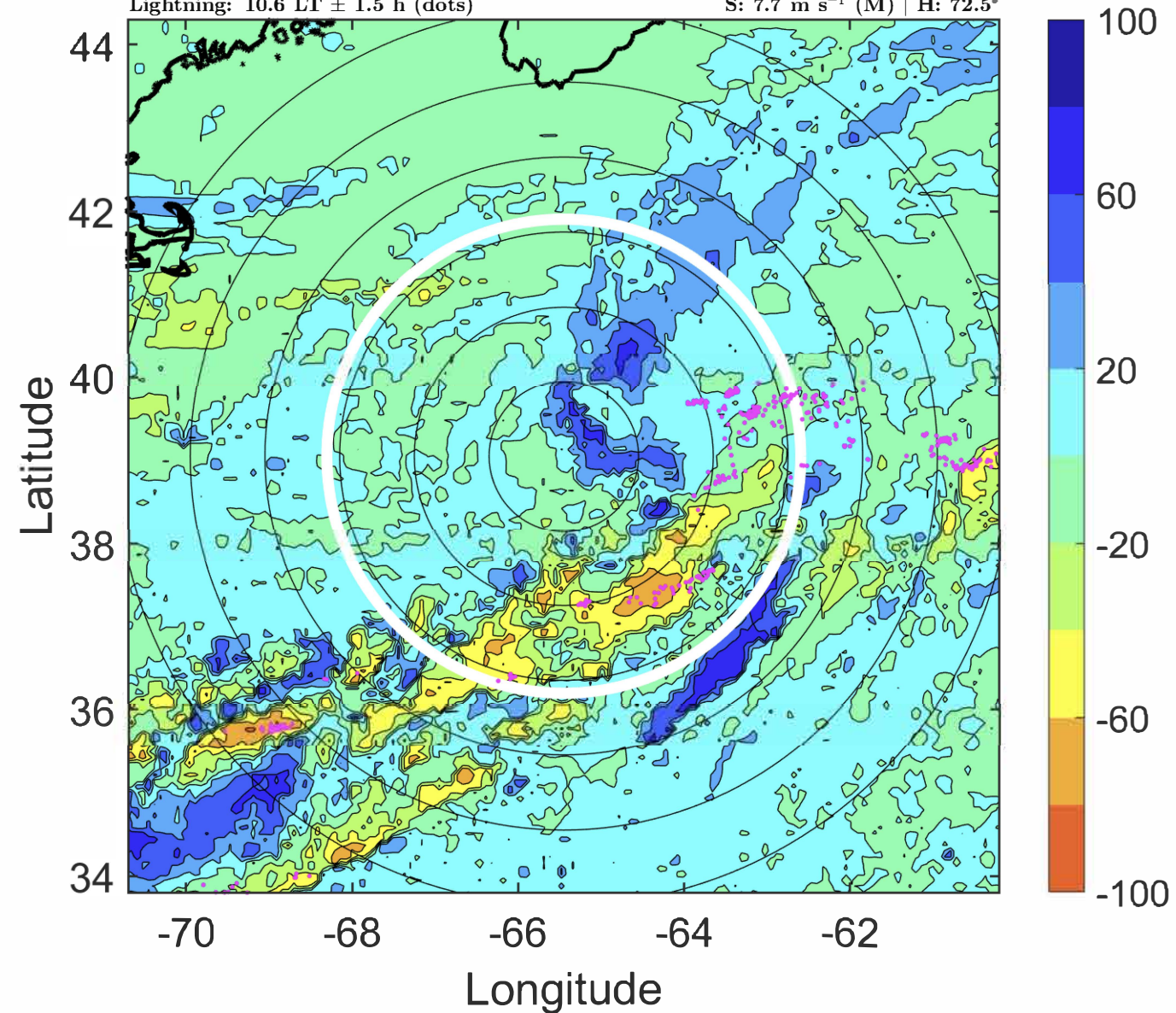
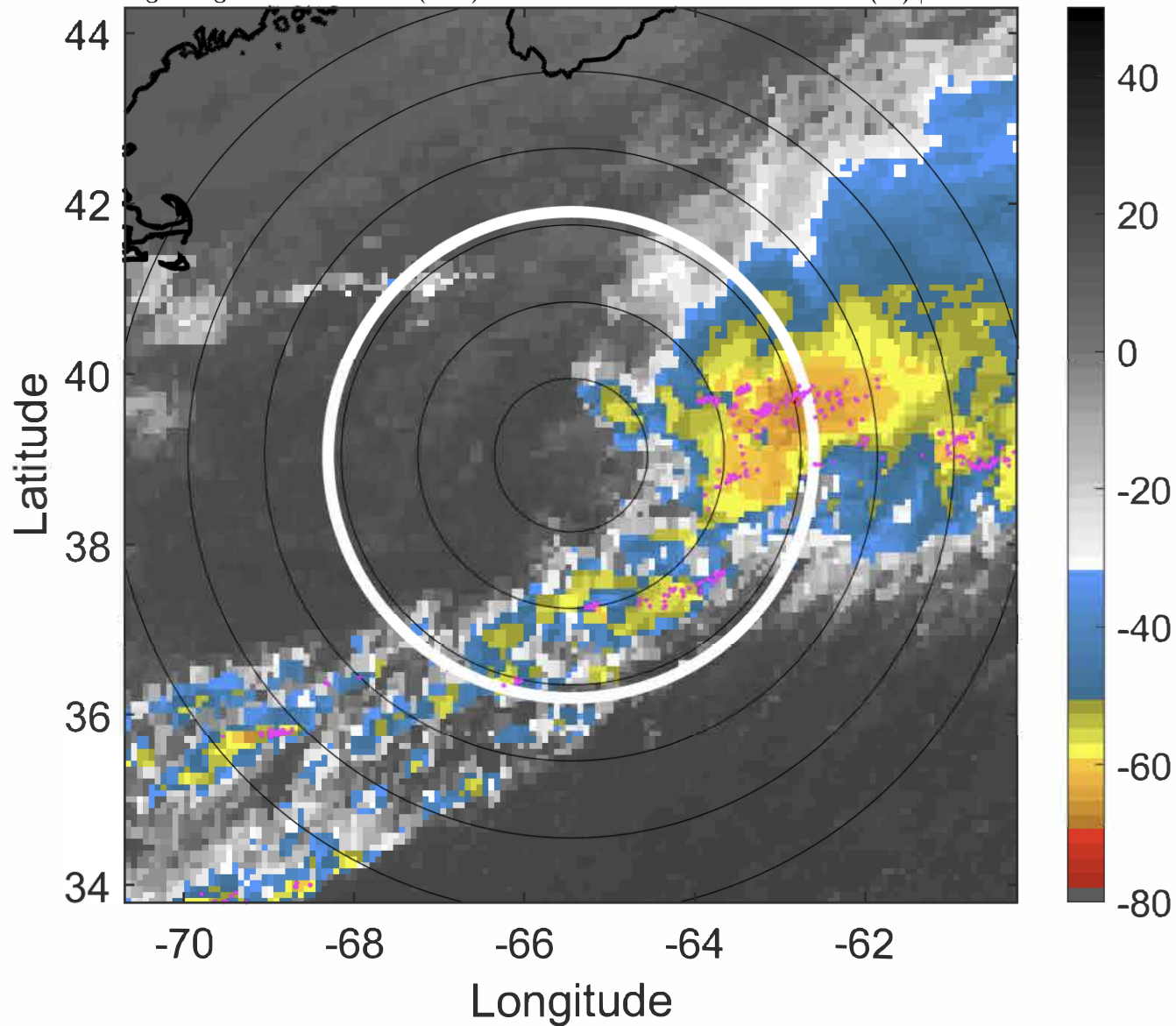
Δ t: 2020081515 (10.6 LT) - 2020081509 (4.5 LT)

Lightning: 10.6 LT \pm 1.5 h (dots)

PT: LLWP | EA: INACT

12L (KYLE) | 42.5 kt TS

S: 7.7 m s⁻¹ (M) | H: 72.5°



IR BT & Lightning

t: 2020081518 (13.7 LT)

Lightning: 13.7 LT \pm 1.5 h (dots)

PT: LLWP | EA: INACT

12L (KYLE) | 40 kt TS

S: 8.4 m s⁻¹ (M) | H: 71°

6-h IR BT Differences & Lightning

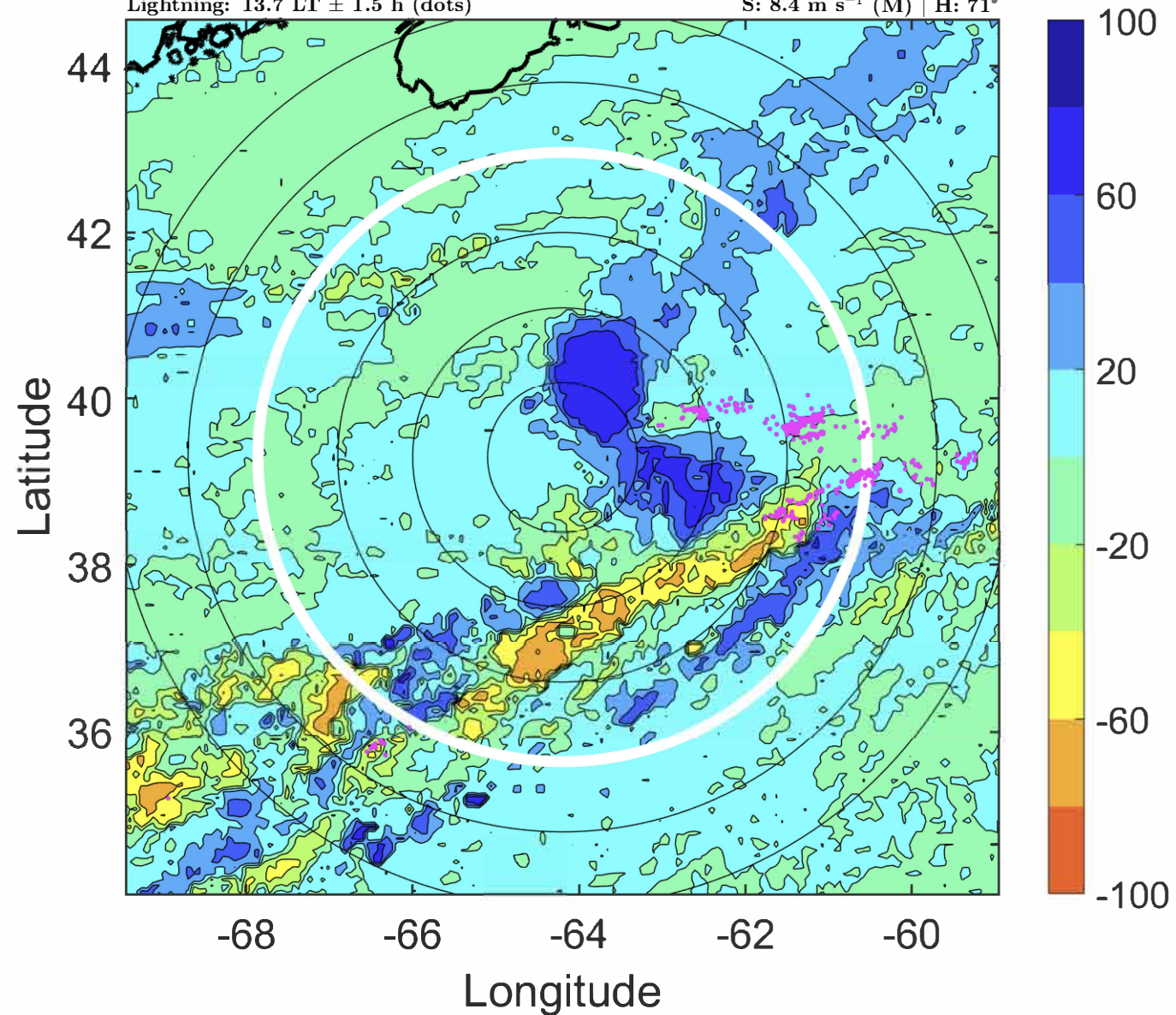
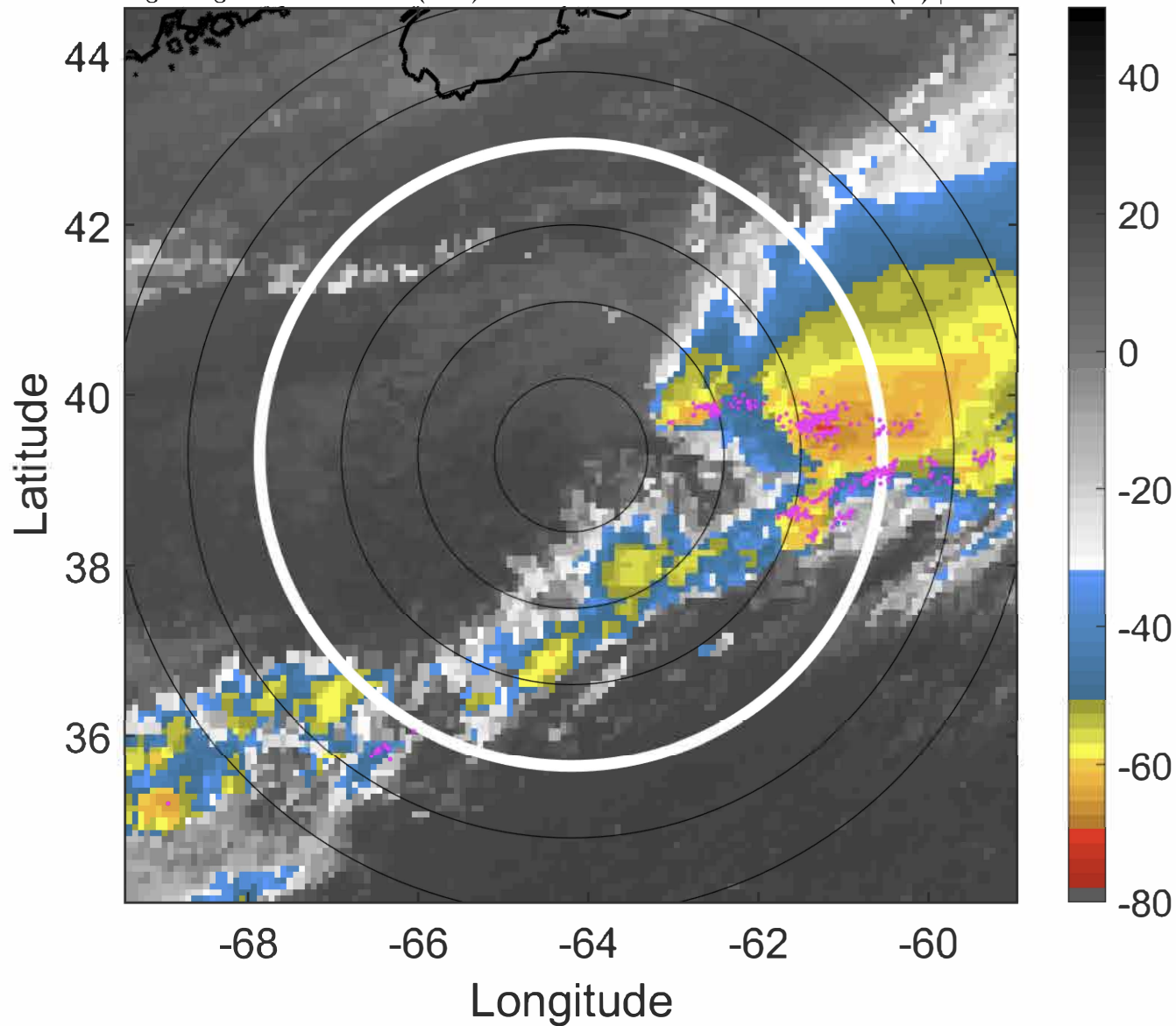
Δ t: 2020081518 (13.7 LT) - 2020081512 (7.6 LT)

Lightning: 13.7 LT \pm 1.5 h (dots)

PT: LLWP | EA: INACT

12L (KYLE) | 40 kt TS

S: 8.4 m s⁻¹ (M) | H: 71°



IR BT & Lightning

t: 2020081521 (16.8 LT)

Lightning: 16.8 LT \pm 1.5 h (dots)

PT: LLWP | EA: INACT

12L (KYLE) | 37.5 kt TS

S: null | H: null

6-h IR BT Differences & Lightning

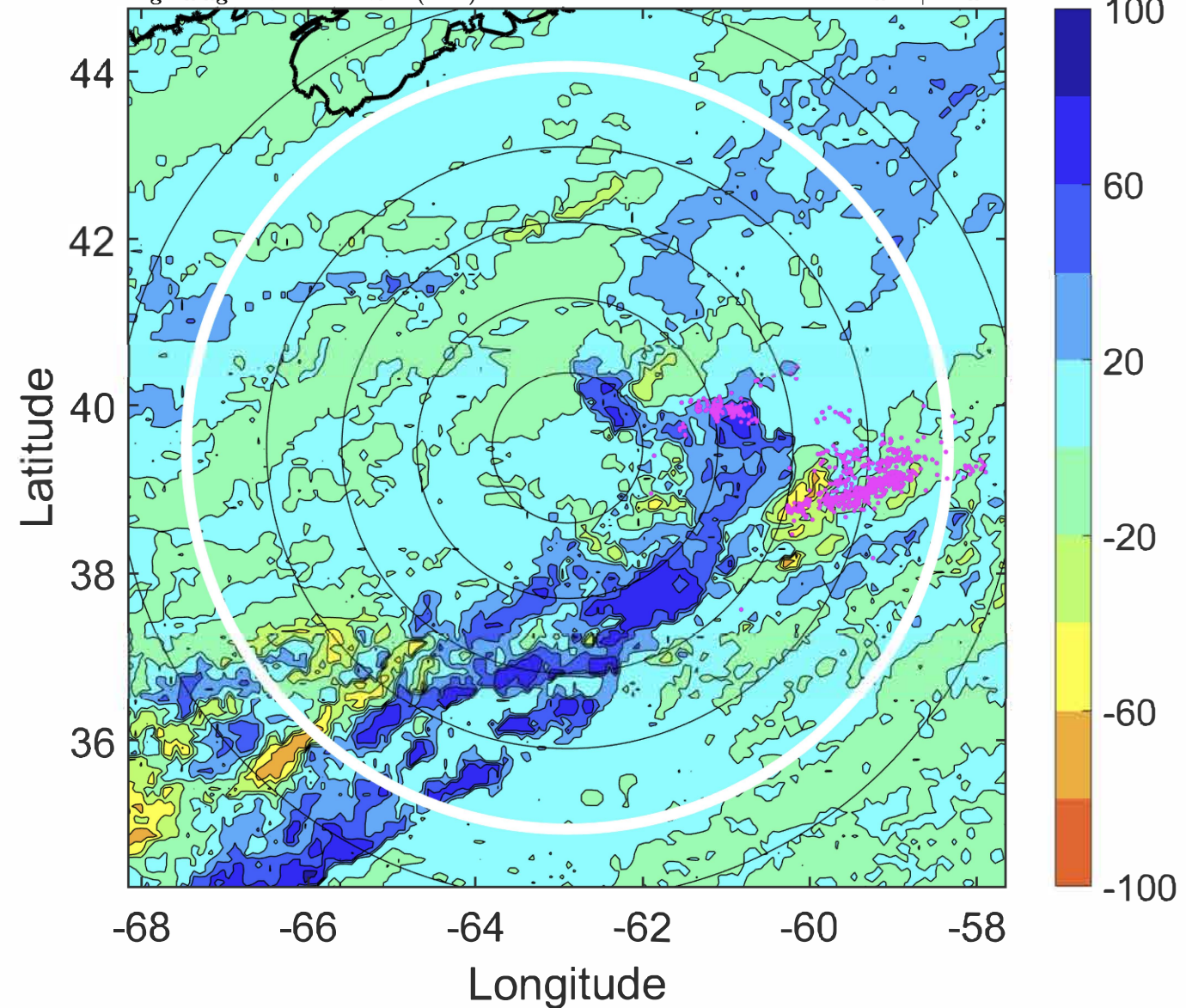
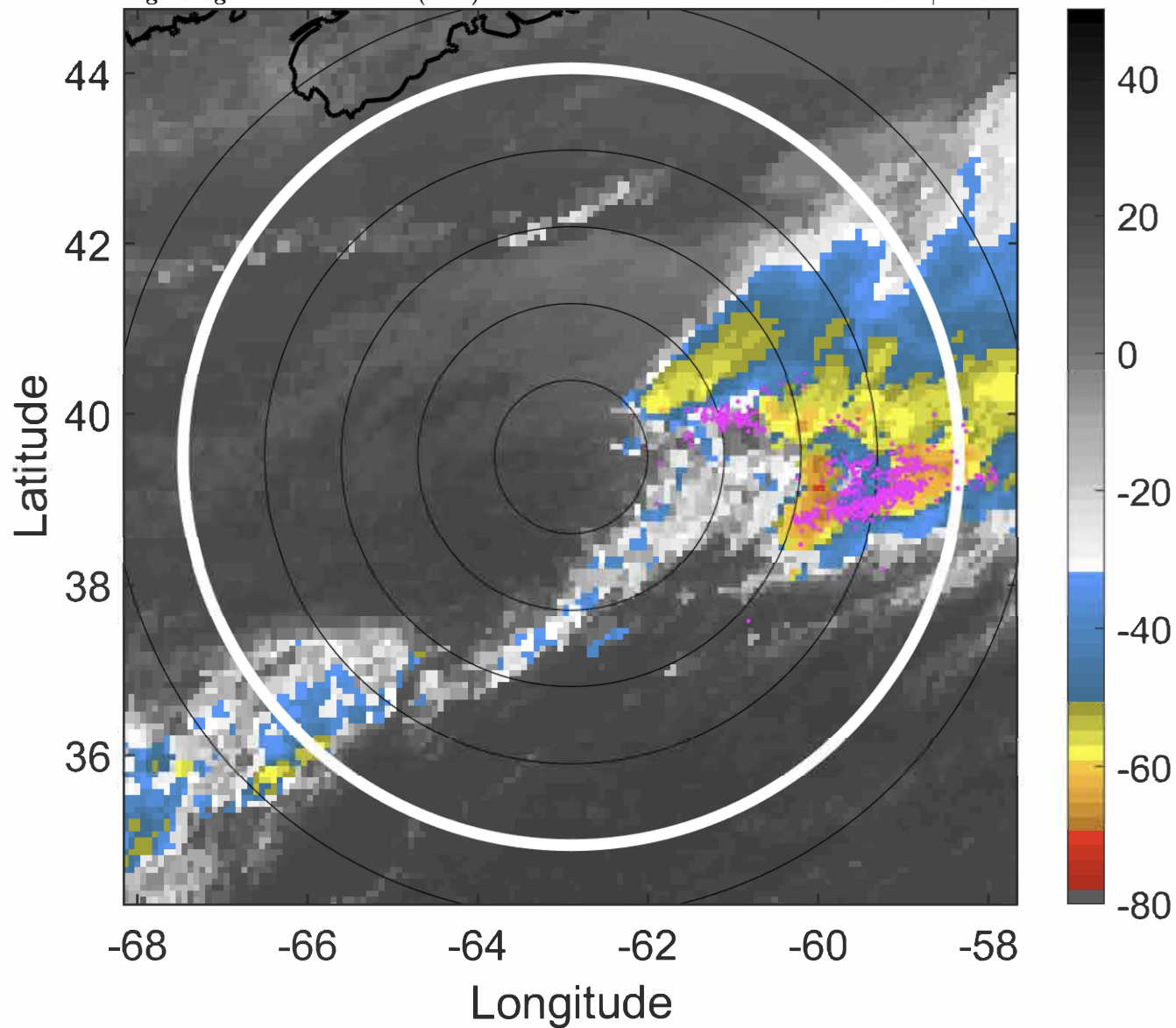
Δ t: 2020081521 (16.8 LT) - 2020081515 (10.6 LT)

Lightning: 16.8 LT \pm 1.5 h (dots)

PT: LLWP | EA: INACT

12L (KYLE) | 37.5 kt TS

S: null | H: null



IR BT & Lightning

t: 2020081600 (19.9 LT)

Lightning: 19.9 LT \pm 1.5 h (dots)

PT: LLWP | EA: INACT

12L (KYLE) | 35 kt EX

S: null | H: null

6-h IR BT Differences & Lightning

Δ t: 2020081600 (19.9 LT) - 2020081518 (13.7 LT)

Lightning: 19.9 LT \pm 1.5 h (dots)

PT: LLWP | EA: INACT

12L (KYLE) | 35 kt EX

S: null | H: null

