

### IR BT & Lightning

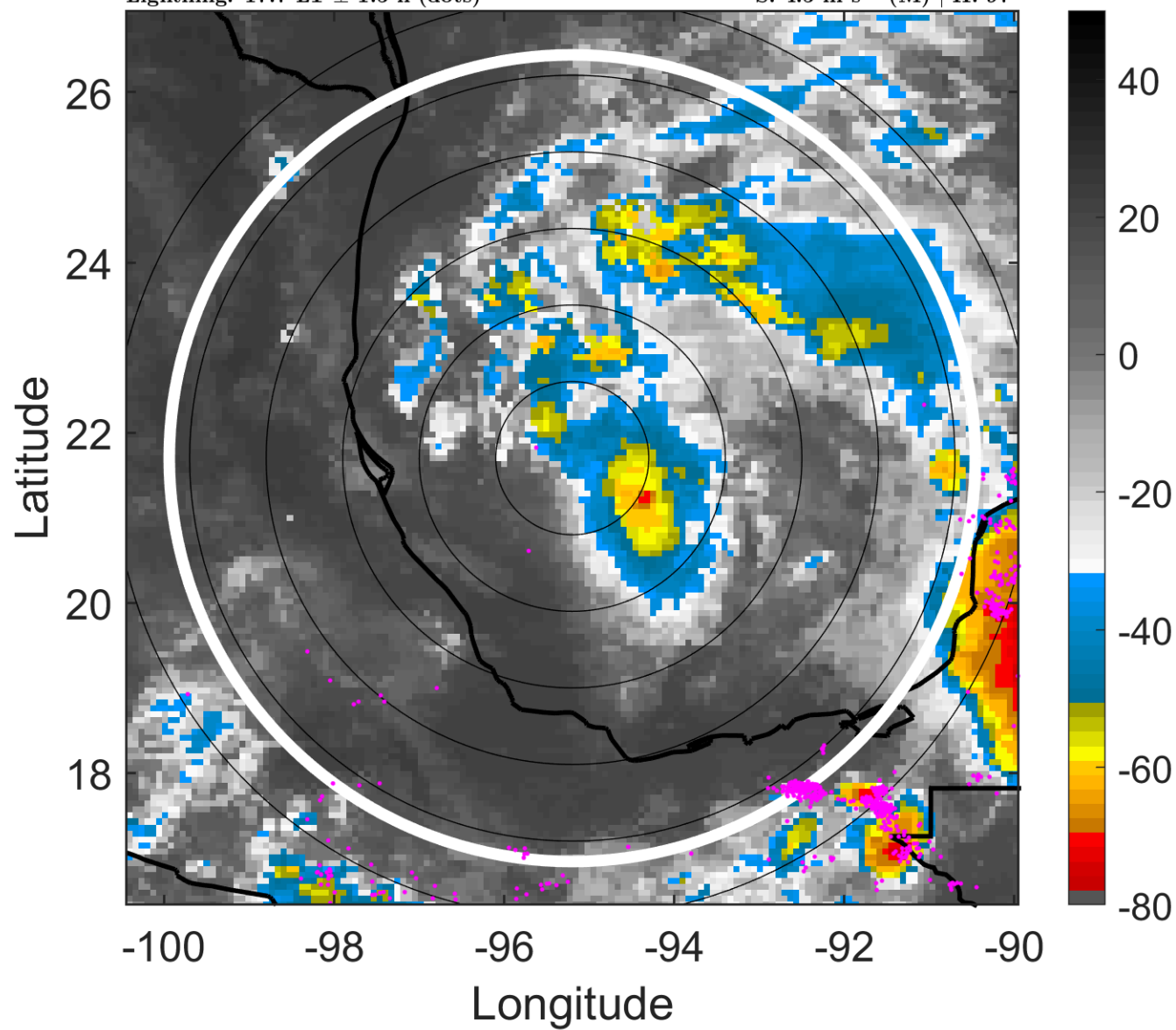
t: 2007092600 (17.7 LT)

Lightning: 17.7 LT  $\pm$  1.5 h (dots)

PT: SLCP | EA: QUASI

13L (LORENZO) | 25 kt TD

S: 4.5 m s<sup>-1</sup> (M) | H: 97°



### 6-h IR BT Differences & Lightning

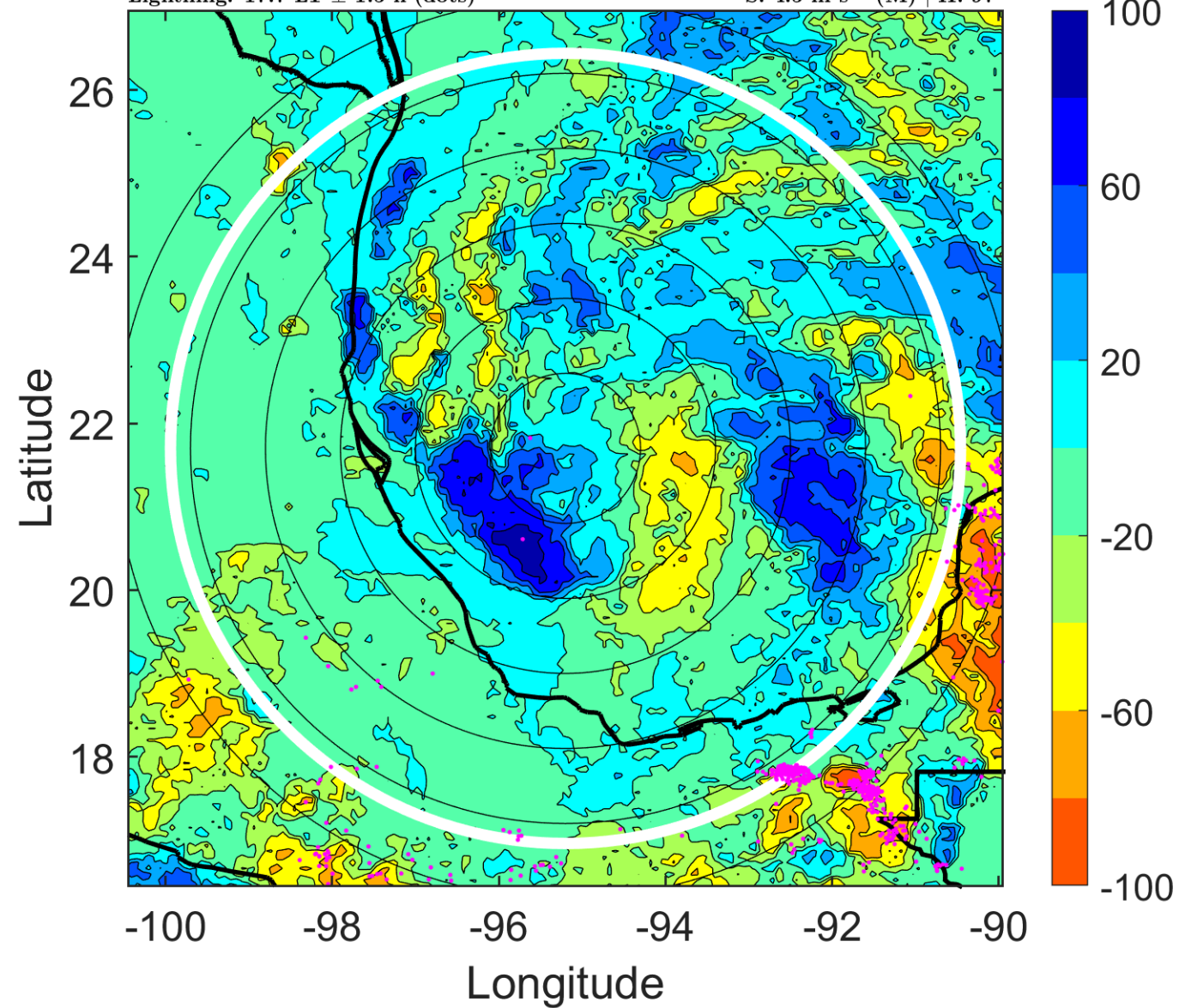
$\Delta$ t: 2007092600 (17.7 LT) - 2007092518 (11.7 LT)

Lightning: 17.7 LT  $\pm$  1.5 h (dots)

PT: SLCP | EA: QUASI

13L (LORENZO) | 25 kt TD

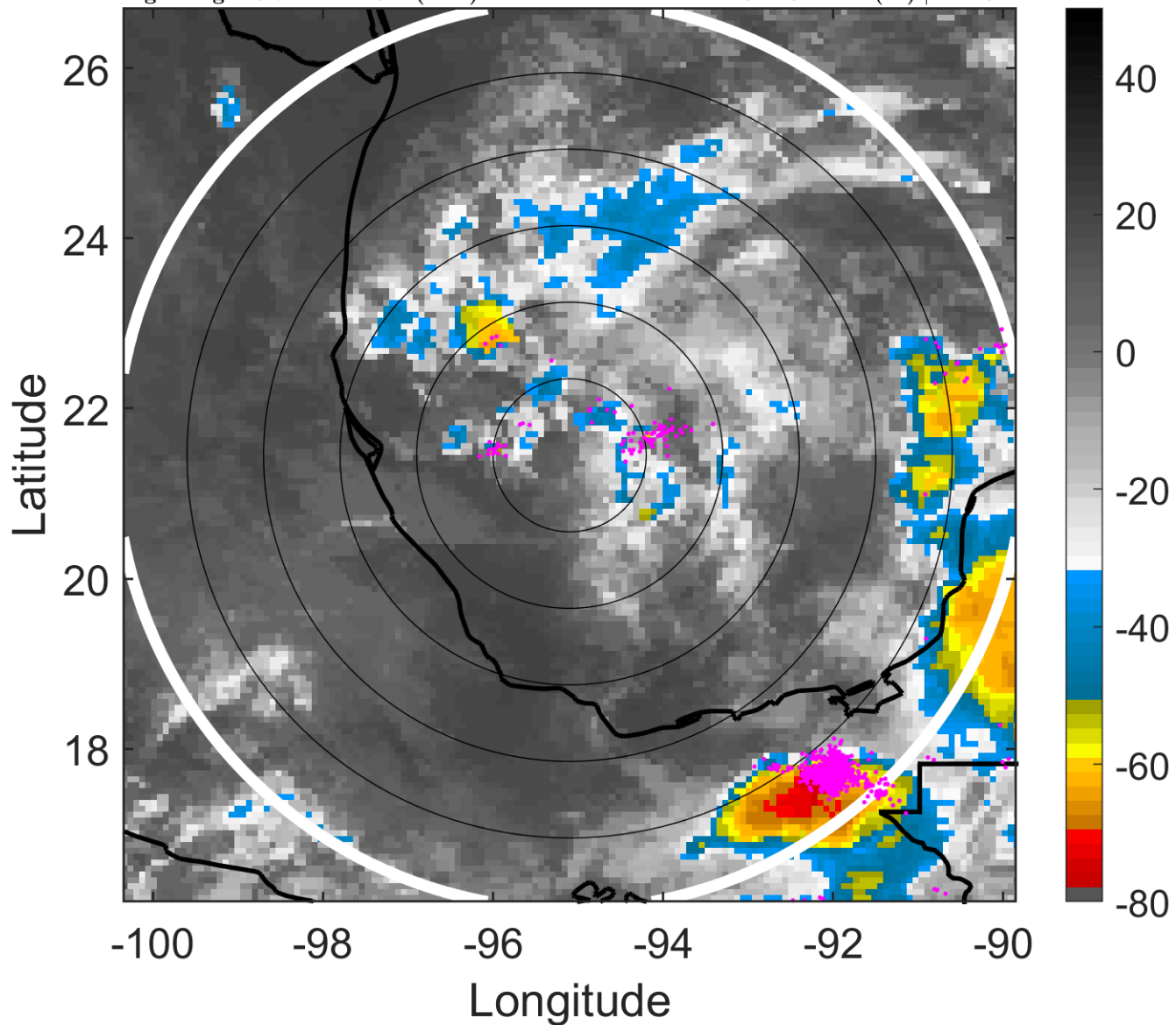
S: 4.5 m s<sup>-1</sup> (M) | H: 97°



### IR BT & Lightning

t: 2007092603 (20.7 LT)  
Lightning: 20.7 LT  $\pm$  1.5 h (dots)

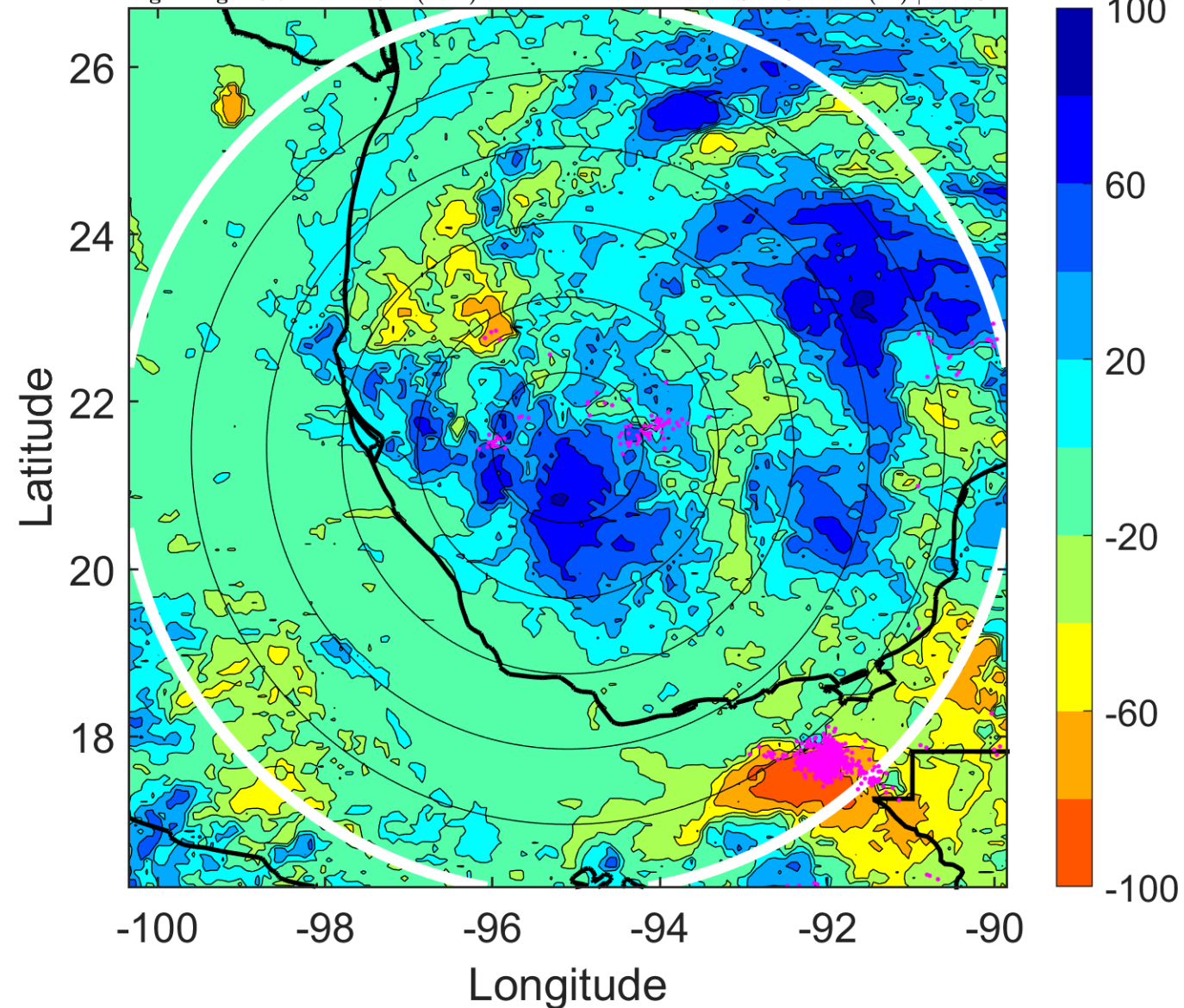
PT: SLCP | EA: QUASI  
13L (LORENZO) | 25 kt TD  
S: 4.8 m s<sup>-1</sup> (M) | H: 102°



### 6-h IR BT Differences & Lightning

$\Delta$ t: 2007092603 (20.7 LT) - 2007092521 (14.7 LT)  
Lightning: 20.7 LT  $\pm$  1.5 h (dots)

PT: SLCP | EA: QUASI  
13L (LORENZO) | 25 kt TD  
S: 4.8 m s<sup>-1</sup> (M) | H: 102°



### IR BT & Lightning

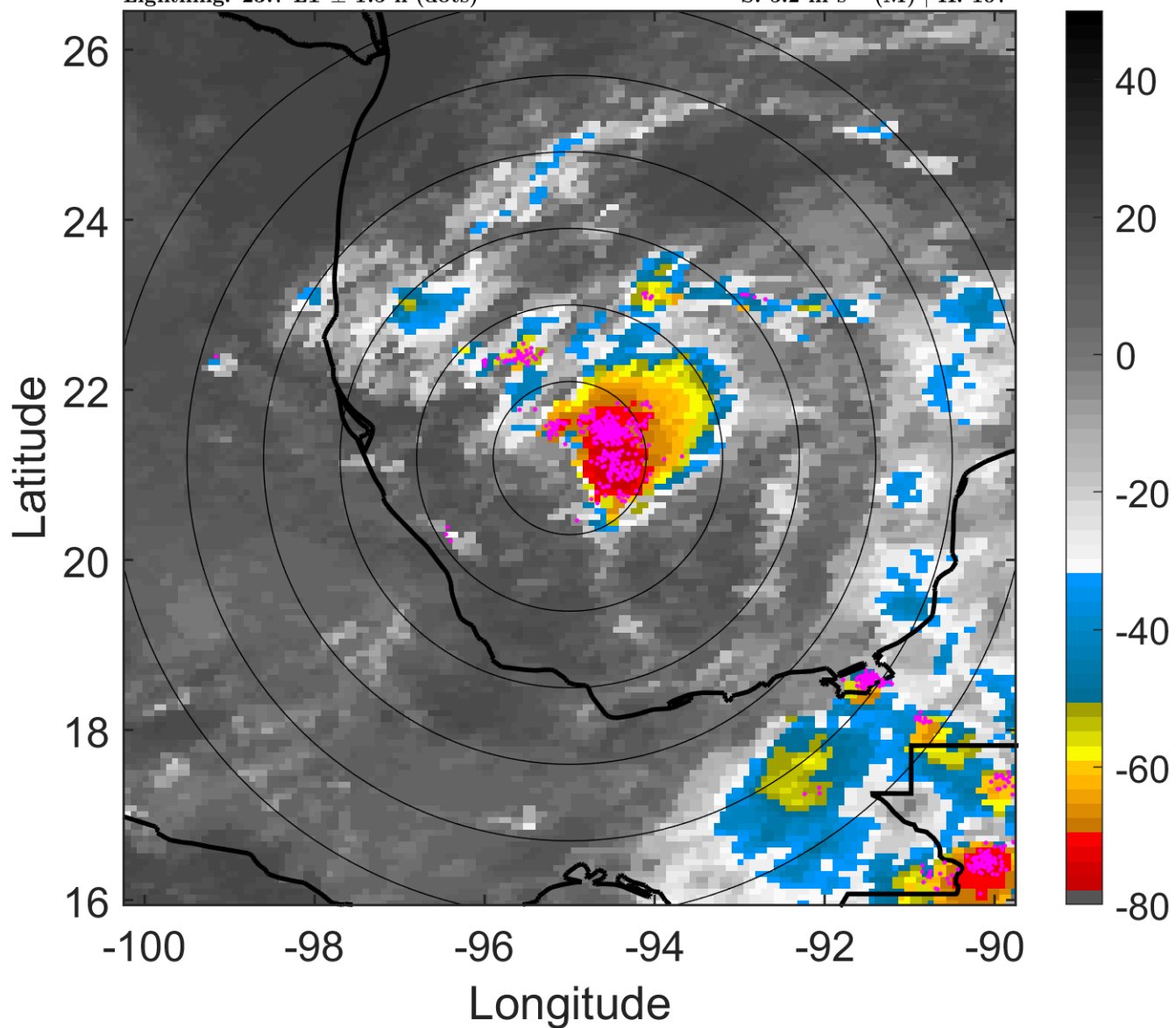
t: 2007092606 (23.7 LT)

Lightning: 23.7 LT  $\pm$  1.5 h (dots)

PT: SLCP | EA: QUASI

13L (LORENZO) | 25 kt TD

S: 5.2 m s<sup>-1</sup> (M) | H: 107°



### 6-h IR BT Differences & Lightning

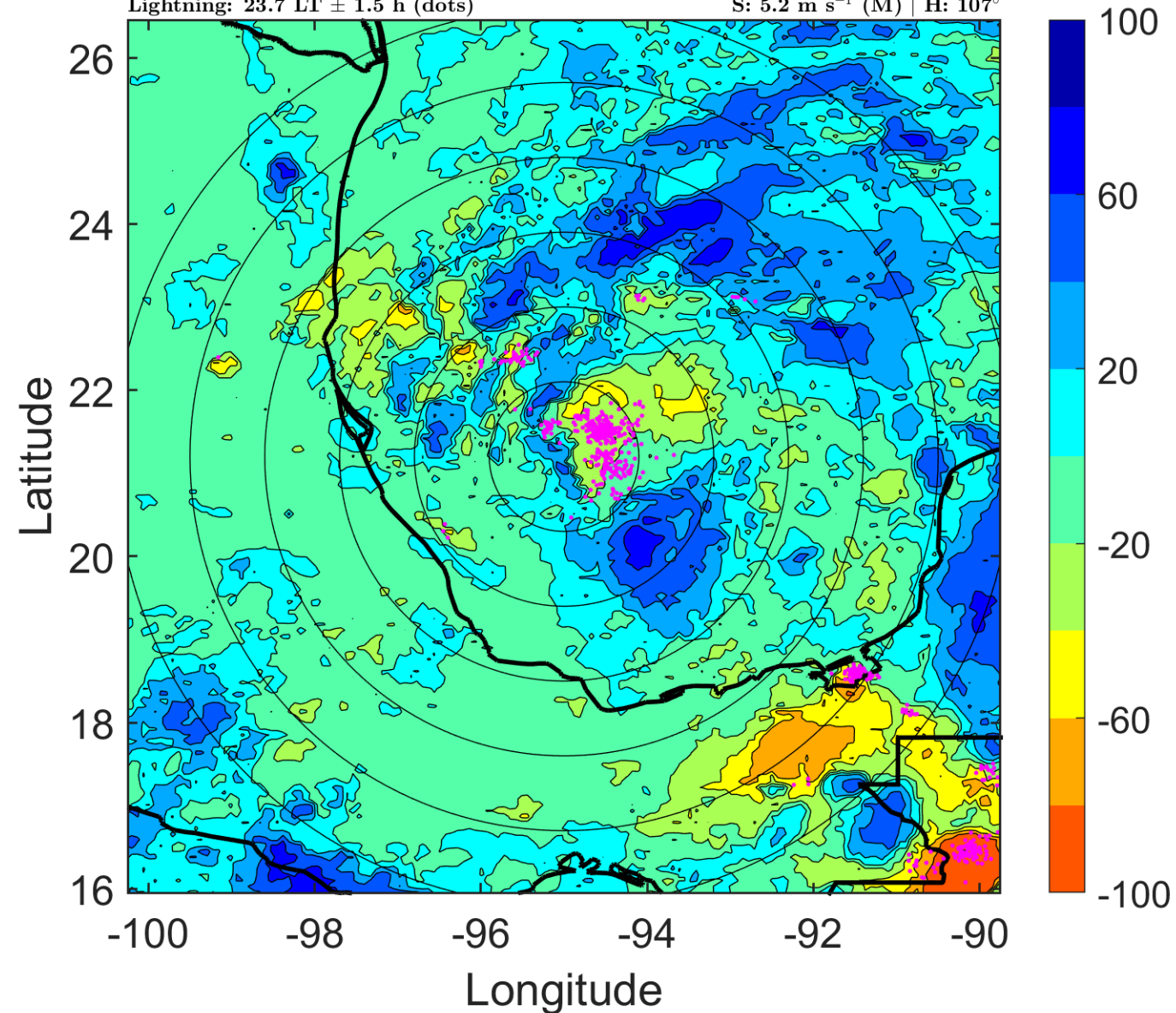
$\Delta$ t: 2007092606 (23.7 LT) - 2007092600 (17.7 LT)

Lightning: 23.7 LT  $\pm$  1.5 h (dots)

PT: SLCP | EA: QUASI

13L (LORENZO) | 25 kt TD

S: 5.2 m s<sup>-1</sup> (M) | H: 107°



### IR BT & Lightning

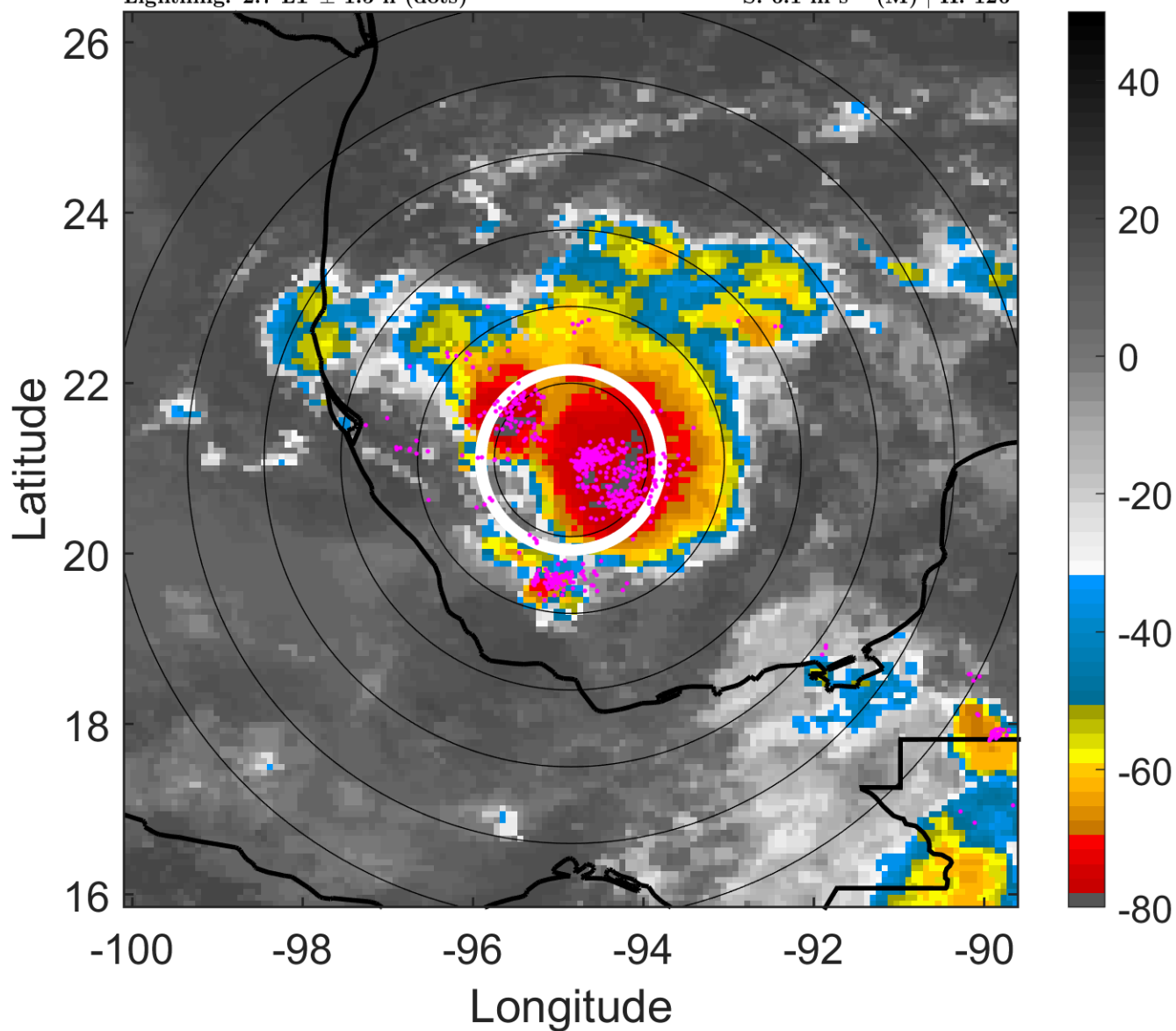
t: 2007092609 (2.7 LT)

Lightning: 2.7 LT  $\pm$  1.5 h (dots)

PT: LLCP | EA: ACT

13L (LORENZO) | 27.5 kt TD

S: 6.1 m s<sup>-1</sup> (M) | H: 126°



### 6-h IR BT Differences & Lightning

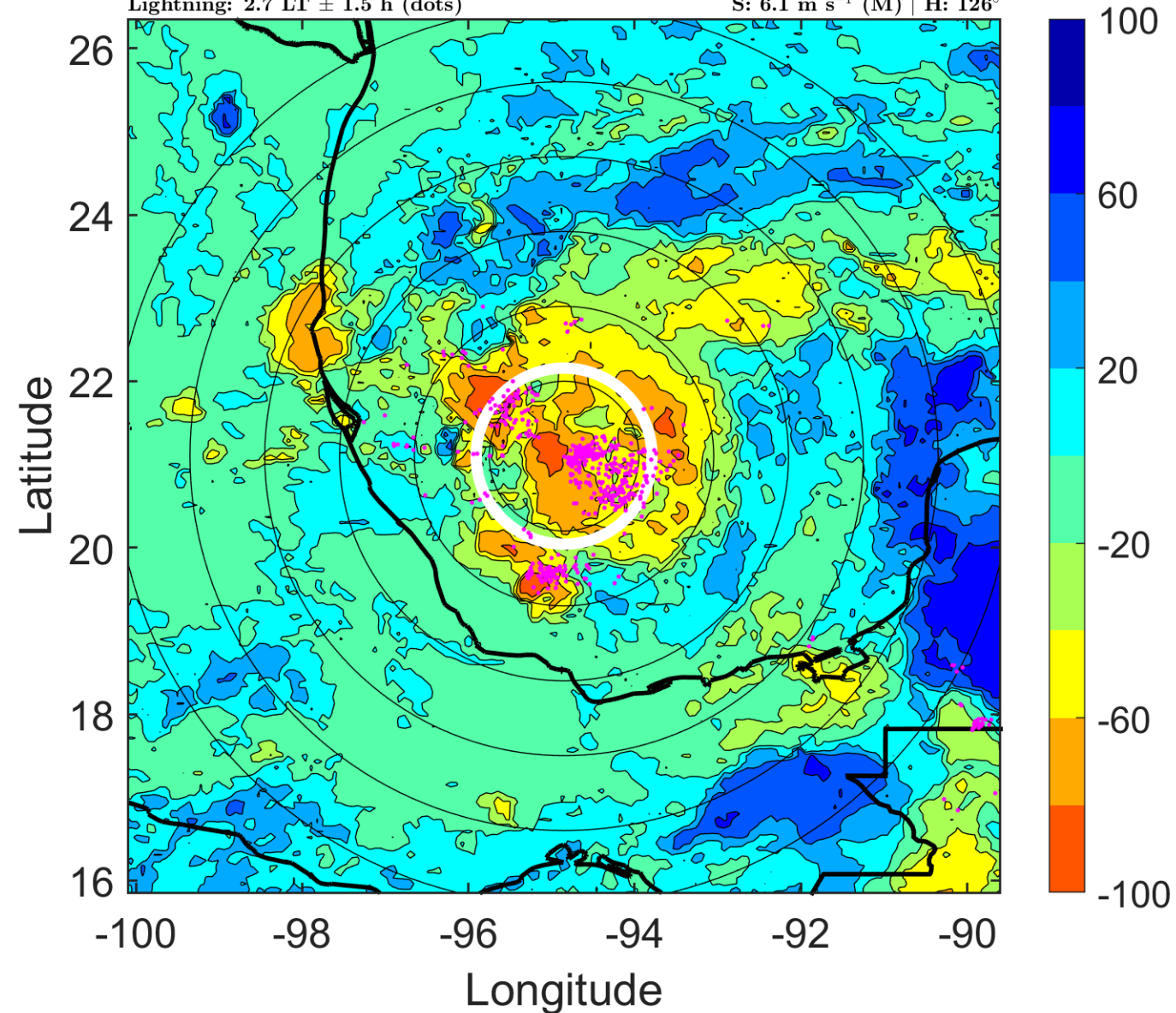
$\Delta$ t: 2007092609 (2.7 LT) - 2007092603 (20.7 LT)

Lightning: 2.7 LT  $\pm$  1.5 h (dots)

PT: LLCP | EA: ACT

13L (LORENZO) | 27.5 kt TD

S: 6.1 m s<sup>-1</sup> (M) | H: 126°



### IR BT & Lightning

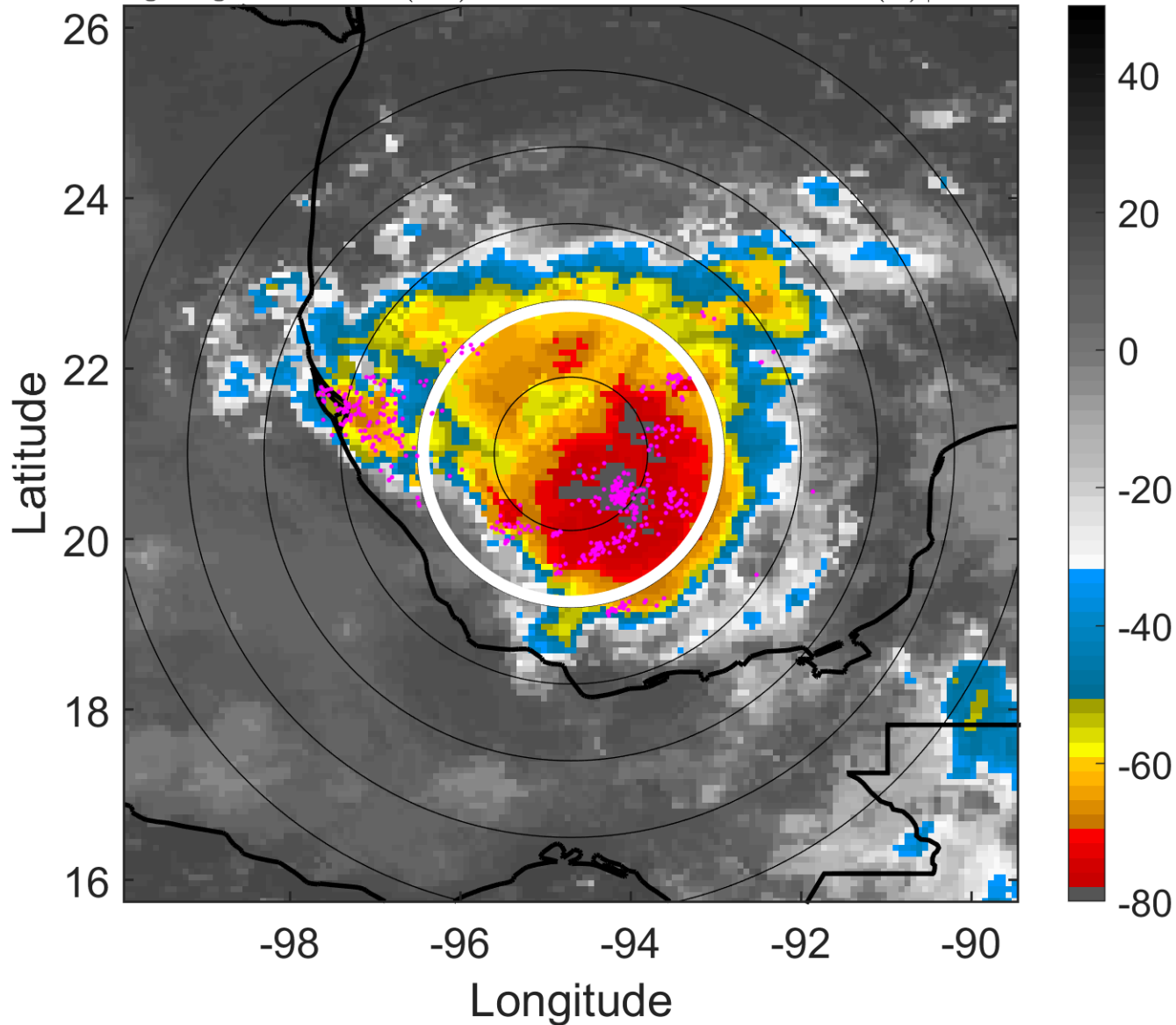
t: 2007092612 (5.7 LT)

Lightning: 5.7 LT  $\pm$  1.5 h (dots)

PT: LLCP | EA: ACT

13L (LORENZO) | 30 kt TD

S: 7 m s<sup>-1</sup> (M) | H: 145°



### 6-h IR BT Differences & Lightning

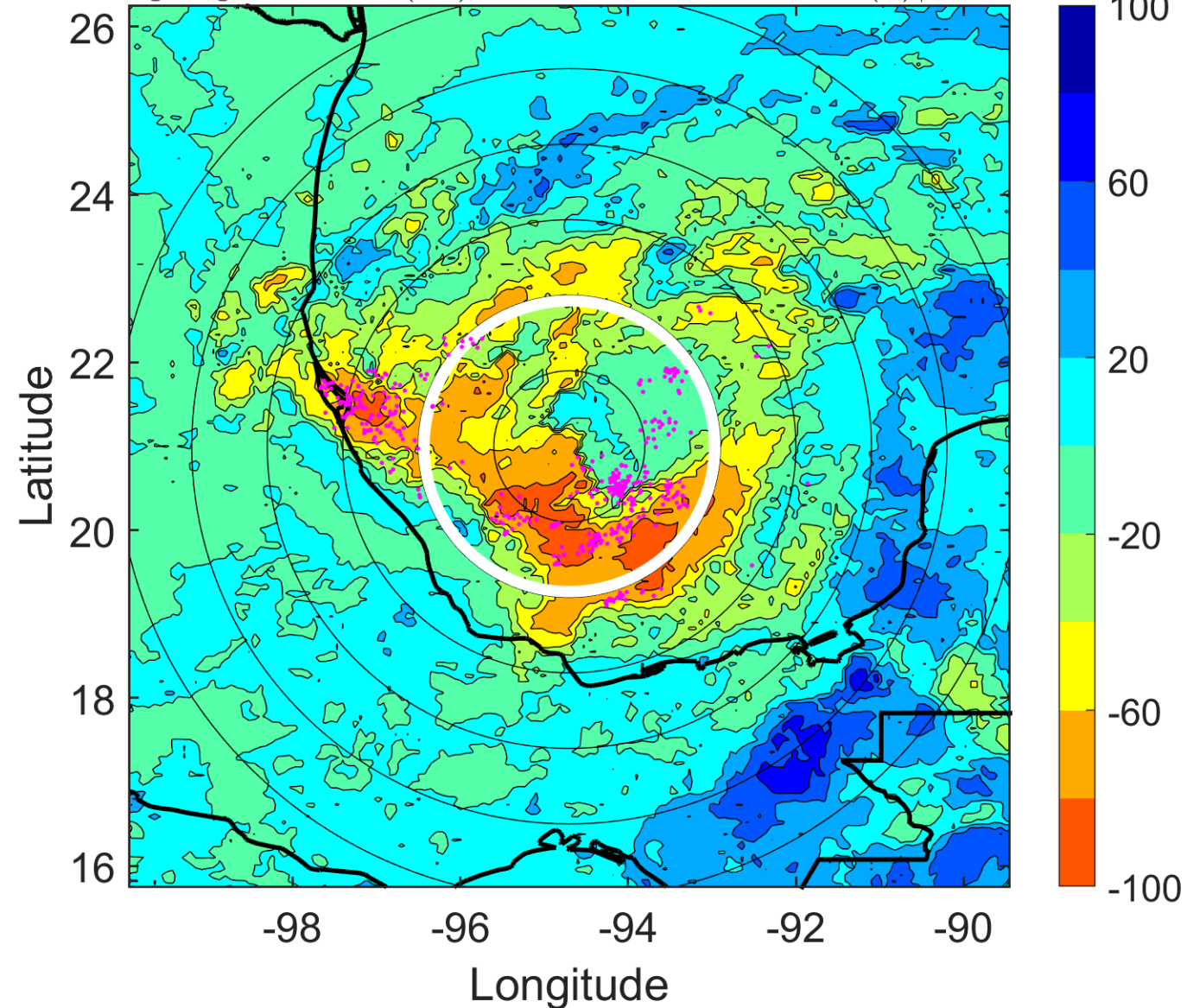
$\Delta$ t: 2007092612 (5.7 LT) - 2007092606 (23.7 LT)

Lightning: 5.7 LT  $\pm$  1.5 h (dots)

PT: LLCP | EA: ACT

13L (LORENZO) | 30 kt TD

S: 7 m s<sup>-1</sup> (M) | H: 145°



### IR BT & Lightning

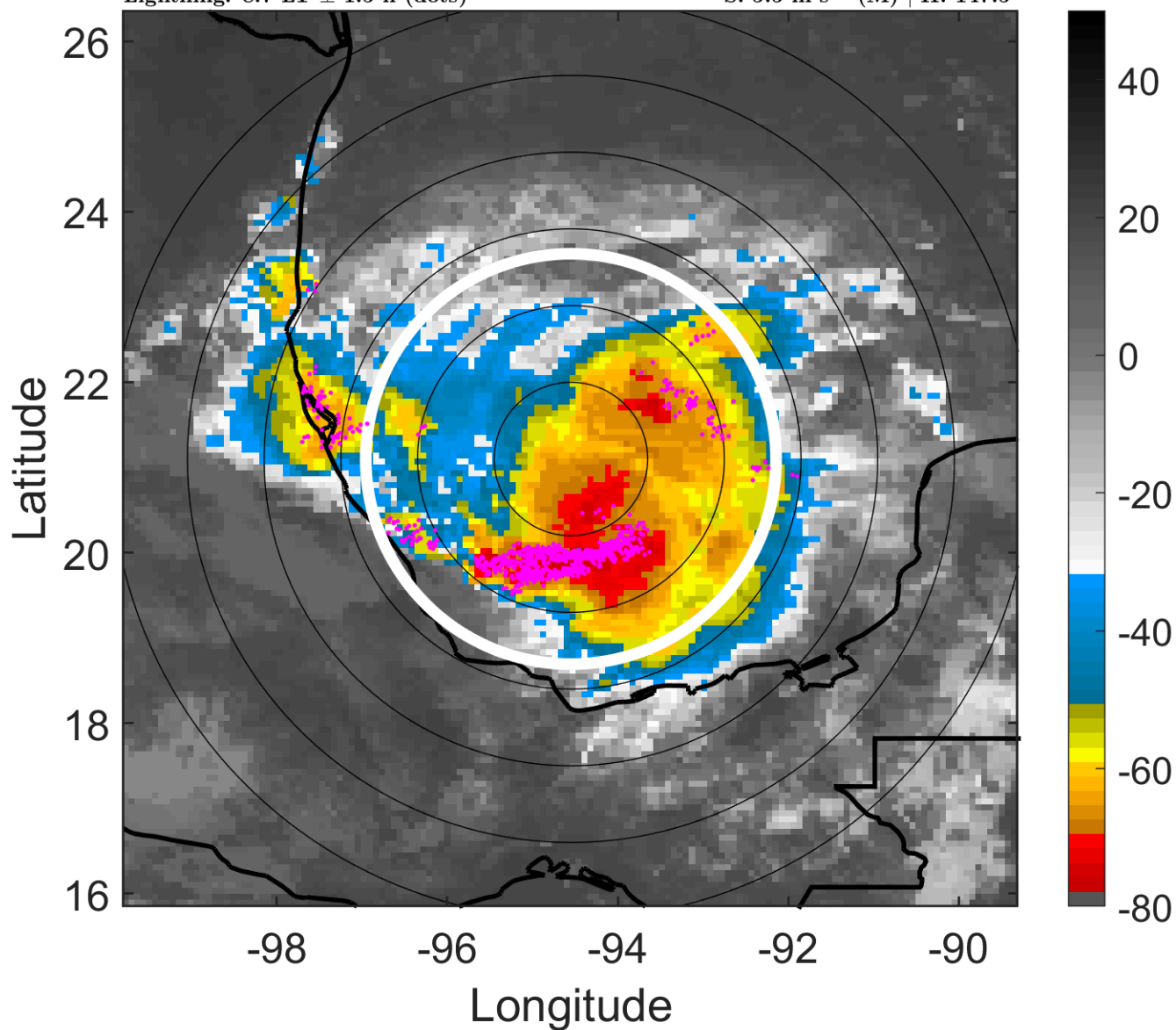
t: 2007092615 (8.7 LT)

Lightning: 8.7 LT  $\pm$  1.5 h (dots)

PT: LLCP | EA: ACT

13L (LORENZO) | 30 kt TD

S: 5.5 m s<sup>-1</sup> (M) | H: 147.5°



### 6-h IR BT Differences & Lightning

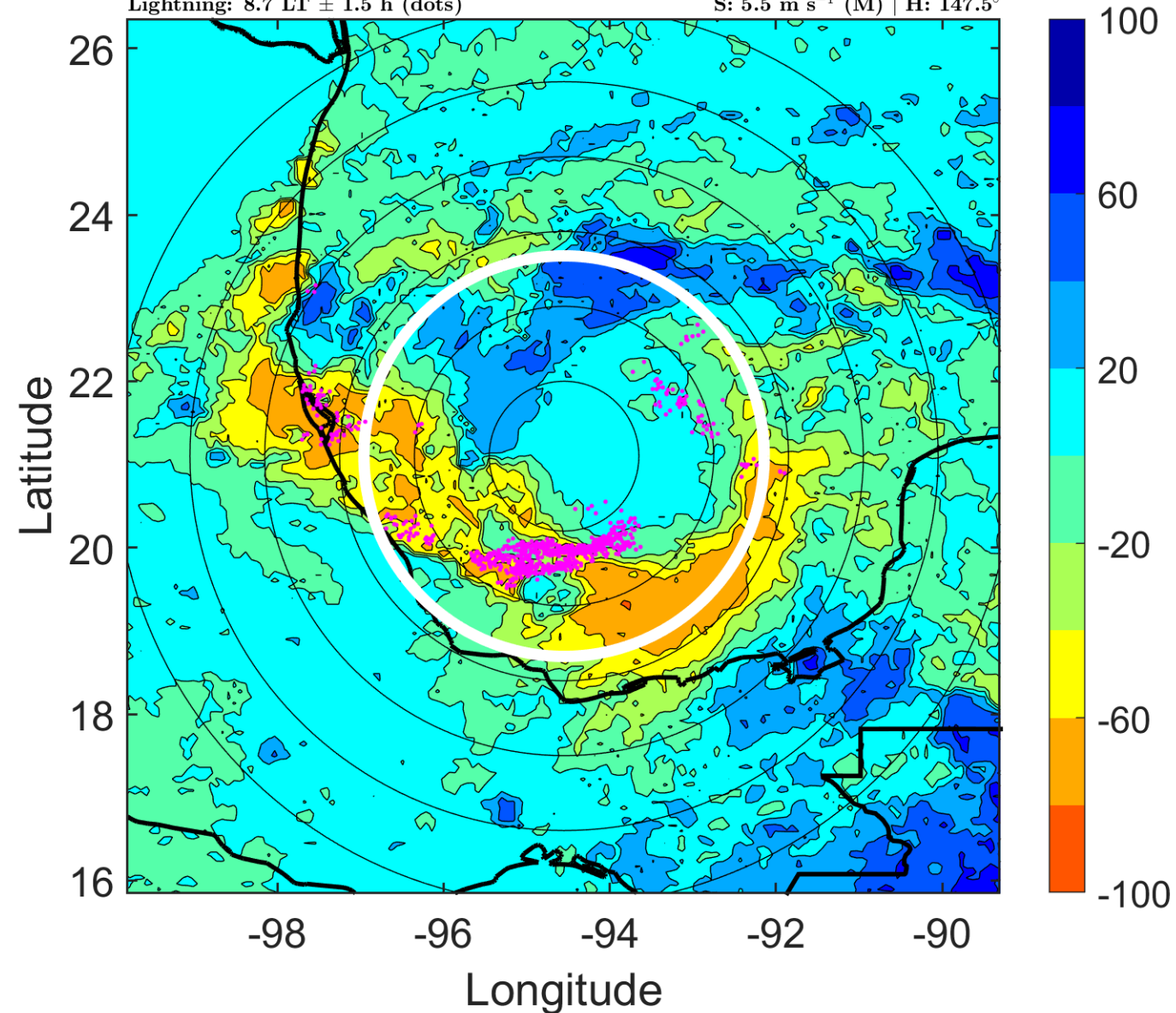
$\Delta$ t: 2007092615 (8.7 LT) - 2007092609 (2.7 LT)

Lightning: 8.7 LT  $\pm$  1.5 h (dots)

PT: LLCP | EA: ACT

13L (LORENZO) | 30 kt TD

S: 5.5 m s<sup>-1</sup> (M) | H: 147.5°



### IR BT & Lightning

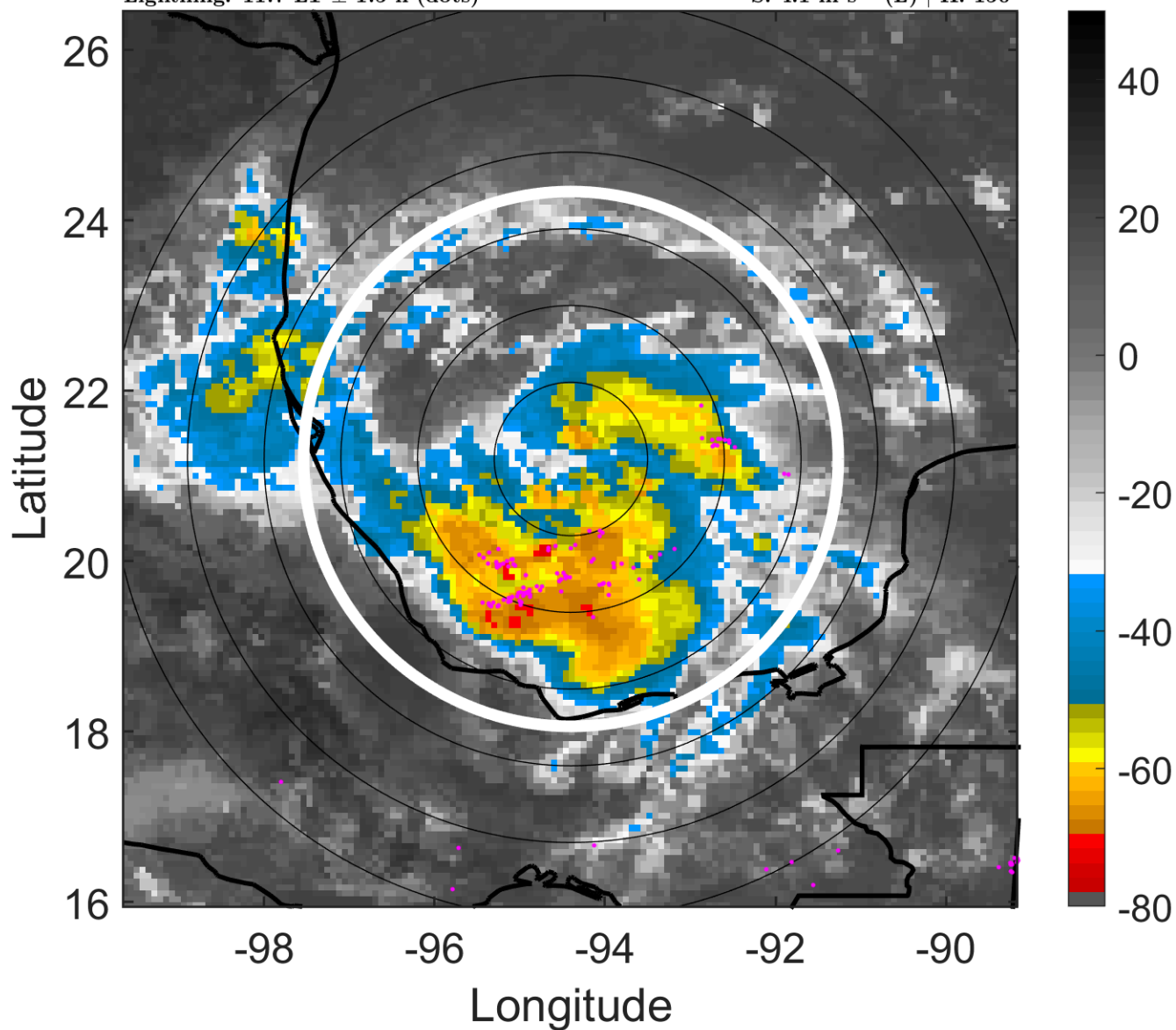
t: 2007092618 (11.7 LT)

Lightning: 11.7 LT  $\pm$  1.5 h (dots)

PT: LLCP | EA: ACT

13L (LORENZO) | 30 kt TD

S: 4.1 m s<sup>-1</sup> (L) | H: 150°



### 6-h IR BT Differences & Lightning

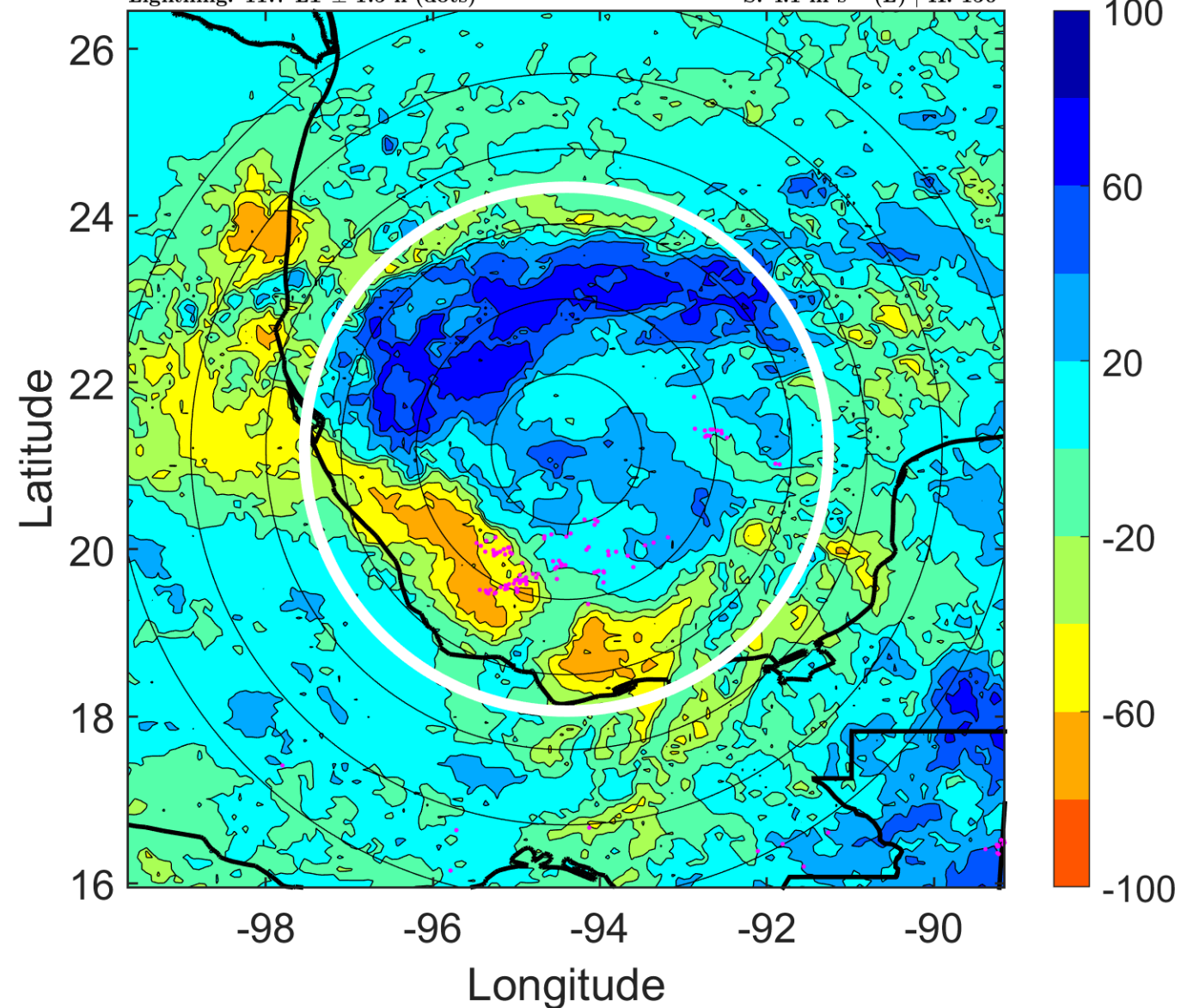
$\Delta$ t: 2007092618 (11.7 LT) - 2007092612 (5.7 LT)

Lightning: 11.7 LT  $\pm$  1.5 h (dots)

PT: LLCP | EA: ACT

13L (LORENZO) | 30 kt TD

S: 4.1 m s<sup>-1</sup> (L) | H: 150°



### IR BT & Lightning

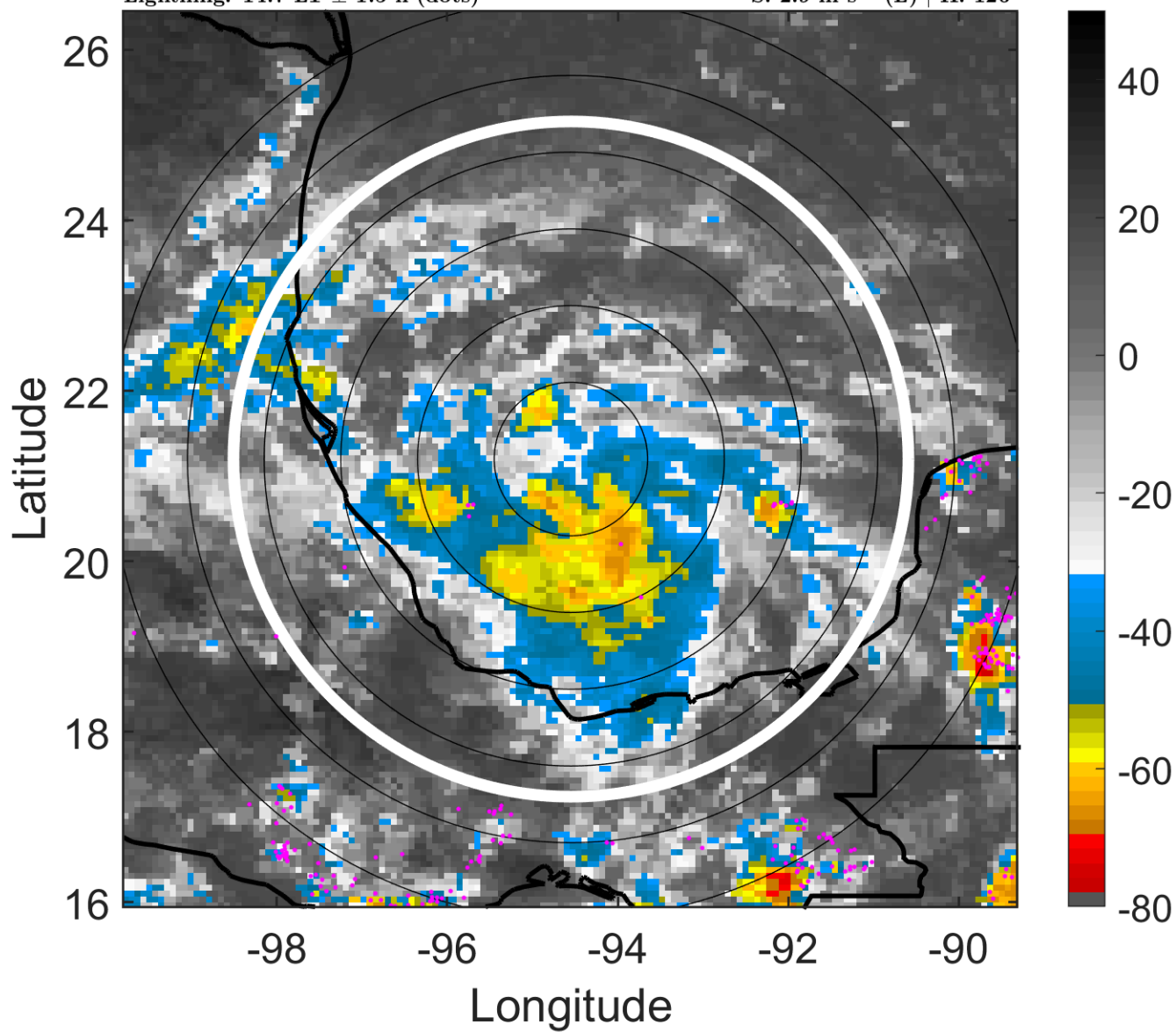
t: 2007092621 (14.7 LT)

Lightning: 14.7 LT  $\pm$  1.5 h (dots)

PT: LLCP | EA: ACT

13L (LORENZO) | 30 kt TD

S: 2.9 m s<sup>-1</sup> (L) | H: 126°



### 6-h IR BT Differences & Lightning

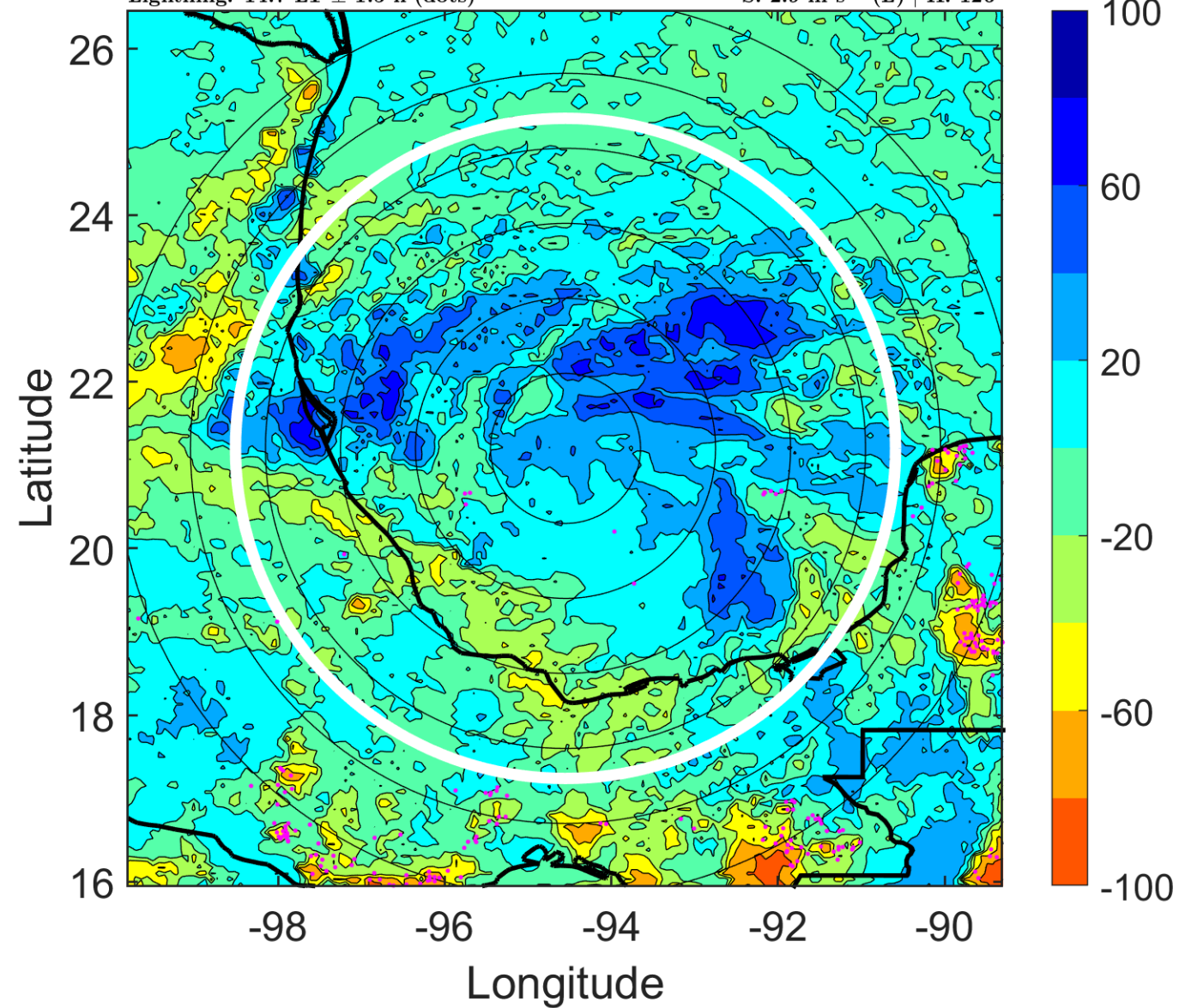
$\Delta$ t: 2007092621 (14.7 LT) - 2007092615 (8.7 LT)

Lightning: 14.7 LT  $\pm$  1.5 h (dots)

PT: LLCP | EA: ACT

13L (LORENZO) | 30 kt TD

S: 2.9 m s<sup>-1</sup> (L) | H: 126°





### IR BT & Lightning

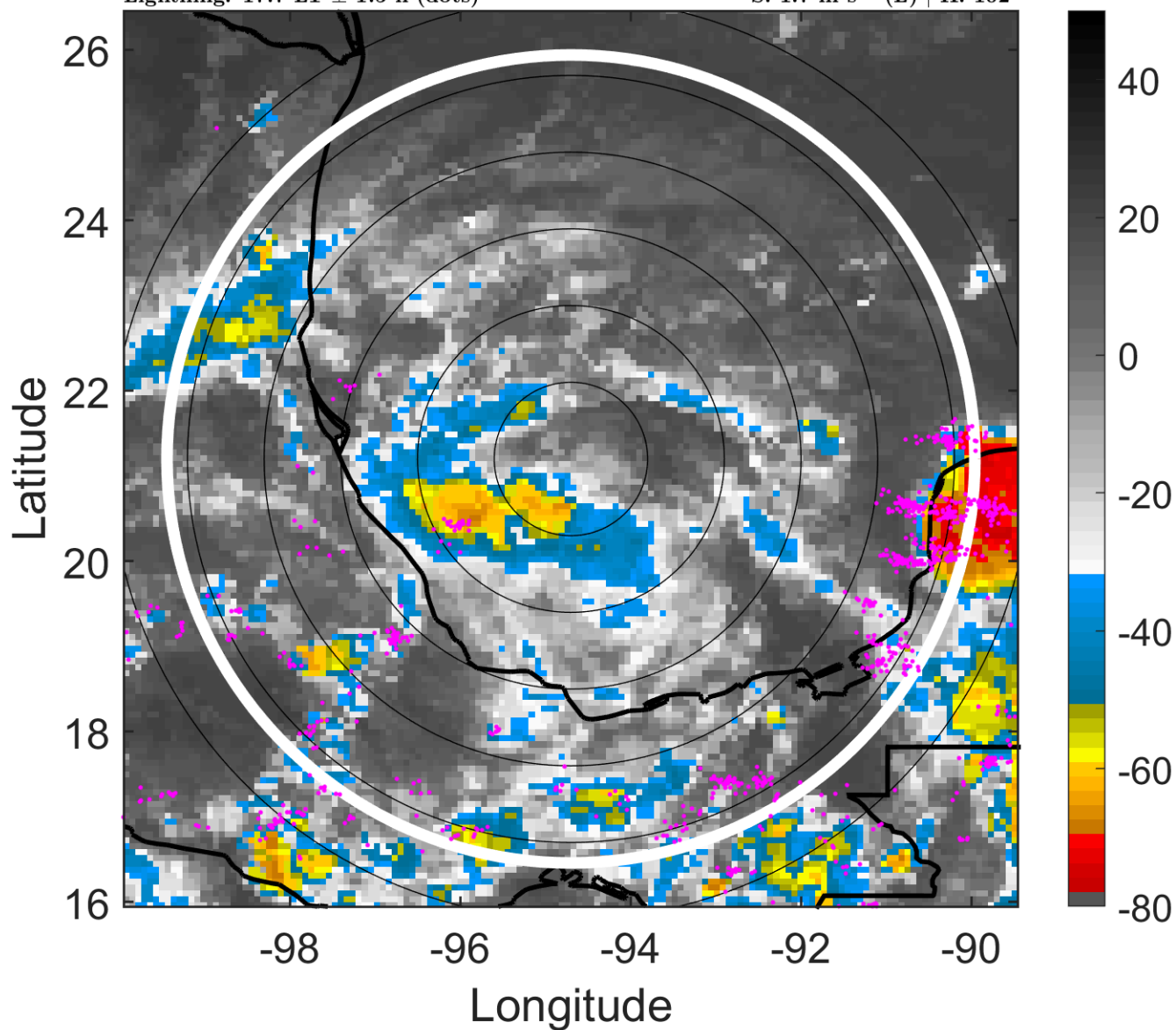
t: 2007092700 (17.7 LT)

Lightning: 17.7 LT  $\pm$  1.5 h (dots)

PT: LLCP | EA: ACT

13L (LORENZO) | 30 kt TD

S: 1.7 m s<sup>-1</sup> (L) | H: 102°



### 6-h IR BT Differences & Lightning

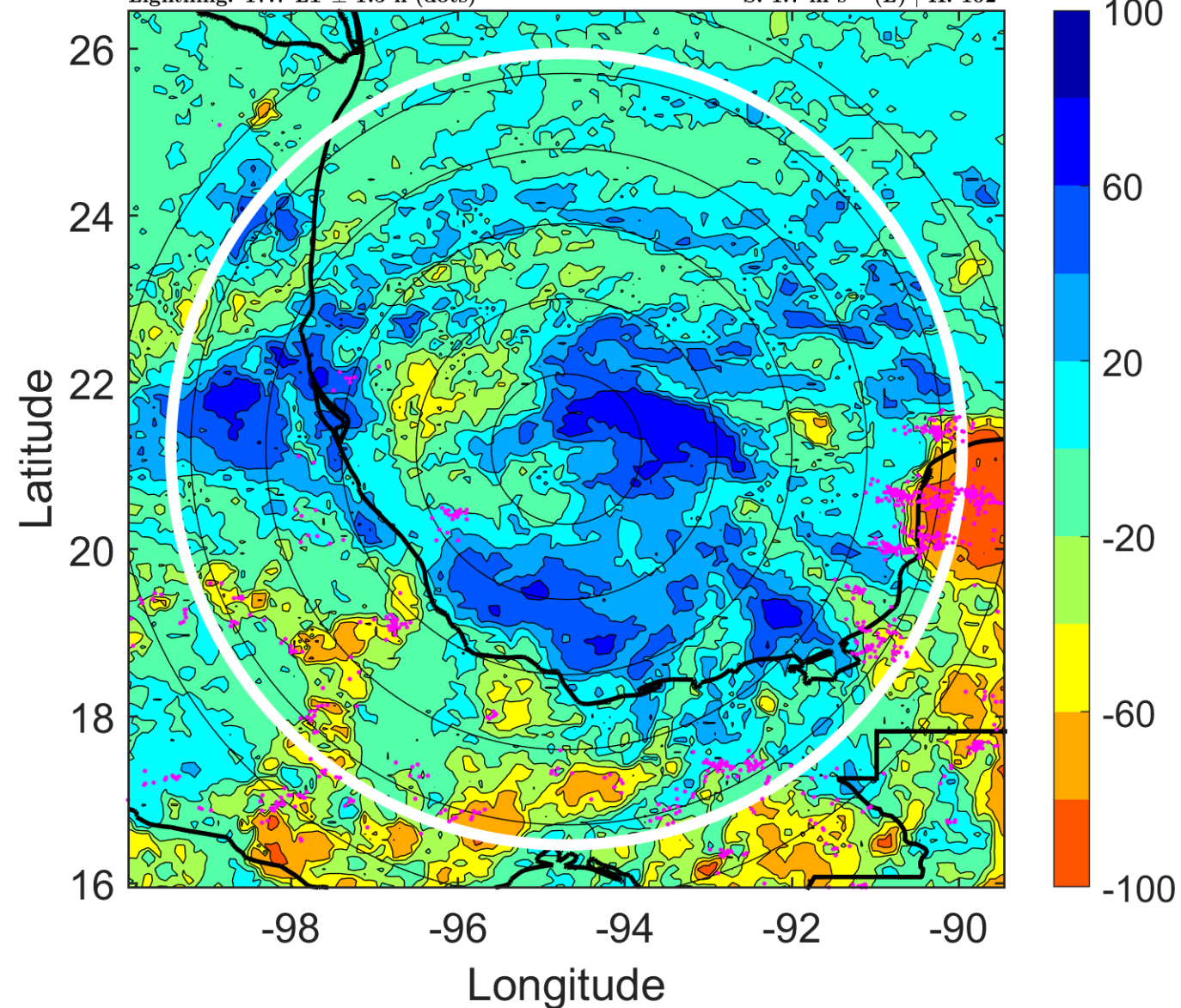
$\Delta$ t: 2007092700 (17.7 LT) - 2007092618 (11.7 LT)

Lightning: 17.7 LT  $\pm$  1.5 h (dots)

PT: LLCP | EA: ACT

13L (LORENZO) | 30 kt TD

S: 1.7 m s<sup>-1</sup> (L) | H: 102°



### IR BT & Lightning

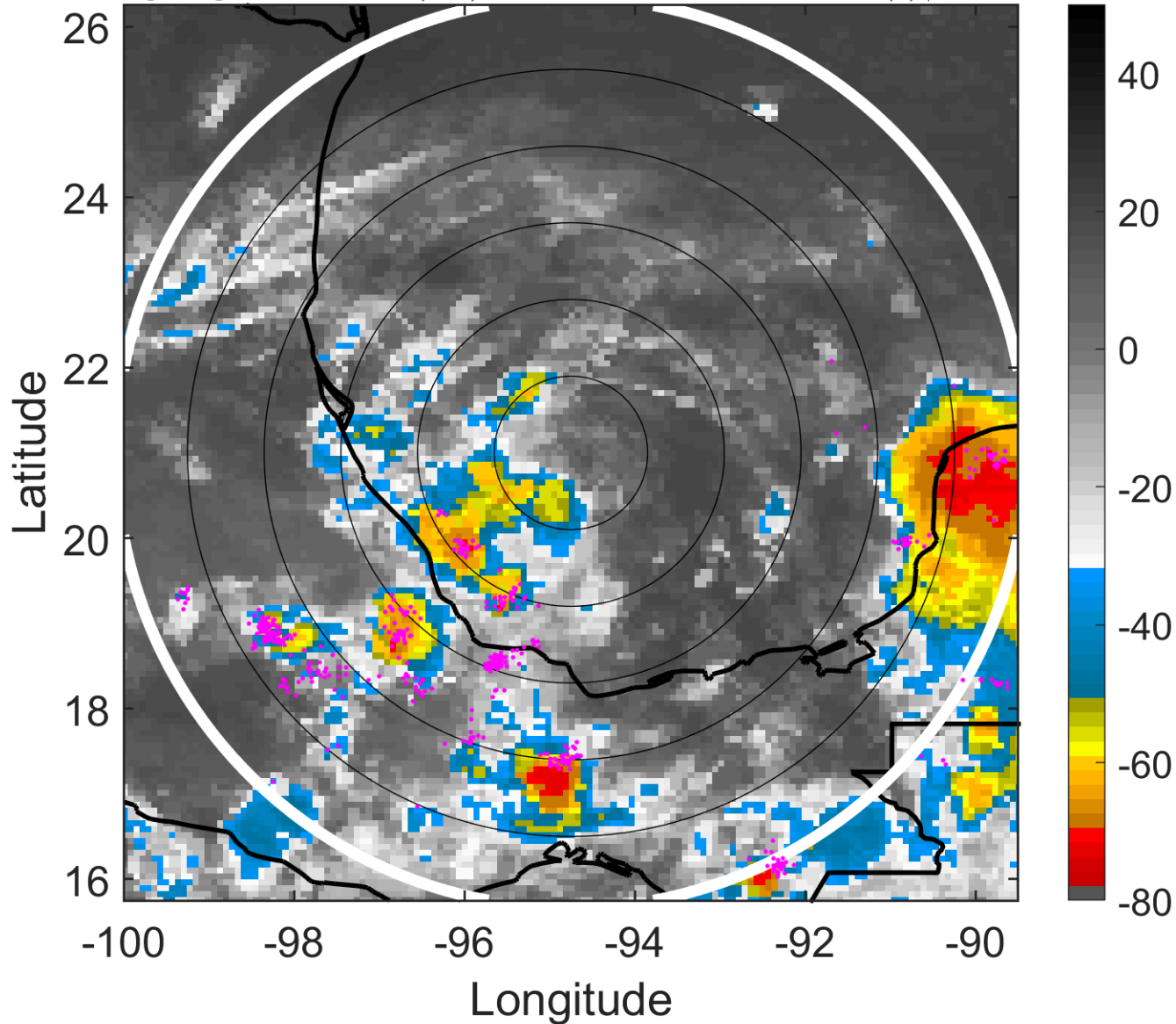
t: 2007092703 (20.7 LT)

Lightning: 20.7 LT  $\pm$  1.5 h (dots)

PT: LLCP | EA: ACT

13L (LORENZO) | 30 kt TD

S: 3.3 m s<sup>-1</sup> (L) | H: 135°



### 6-h IR BT Differences & Lightning

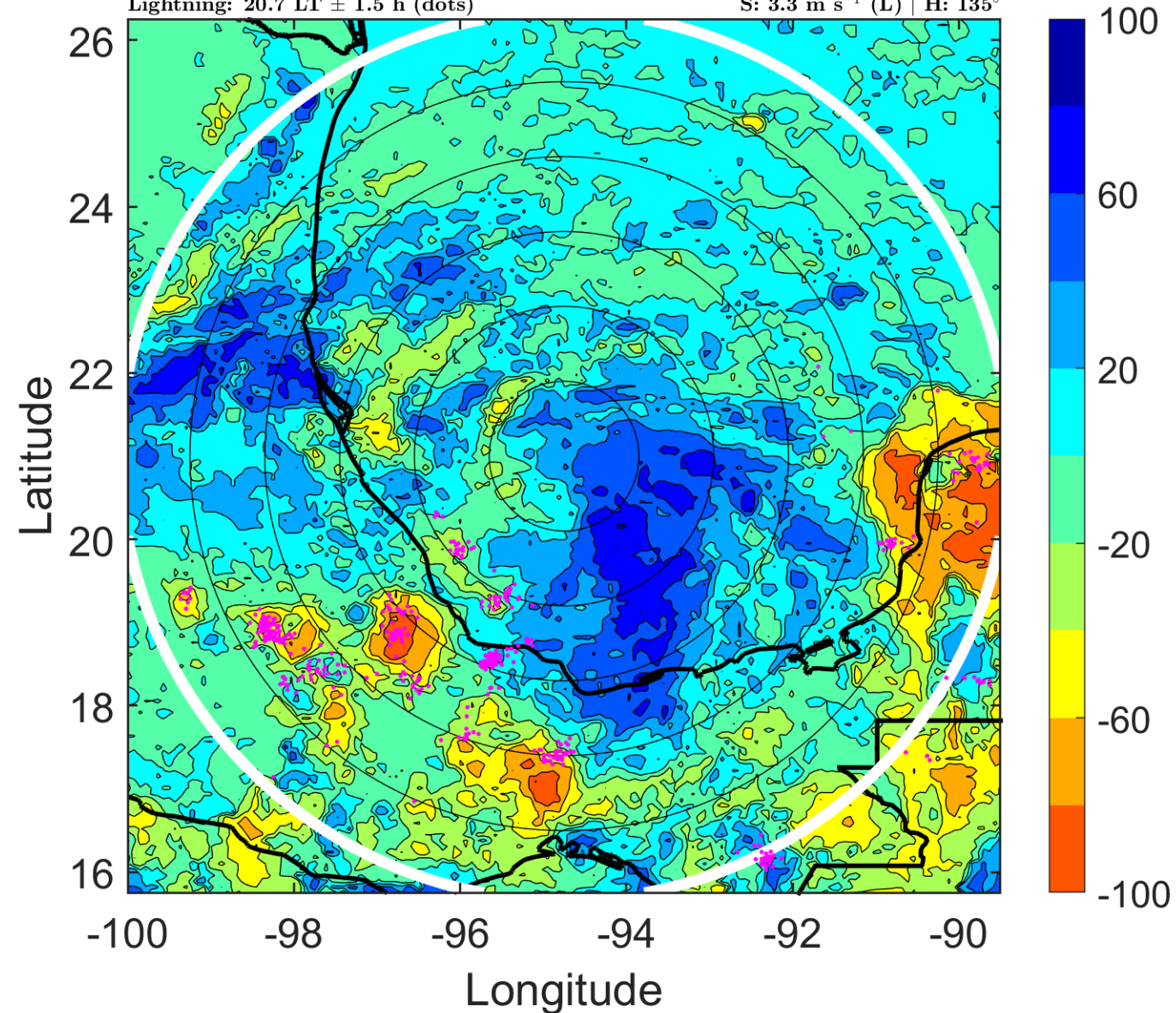
$\Delta$ t: 2007092703 (20.7 LT) - 2007092621 (14.7 LT)

Lightning: 20.7 LT  $\pm$  1.5 h (dots)

PT: LLCP | EA: ACT

13L (LORENZO) | 30 kt TD

S: 3.3 m s<sup>-1</sup> (L) | H: 135°



### IR BT & Lightning

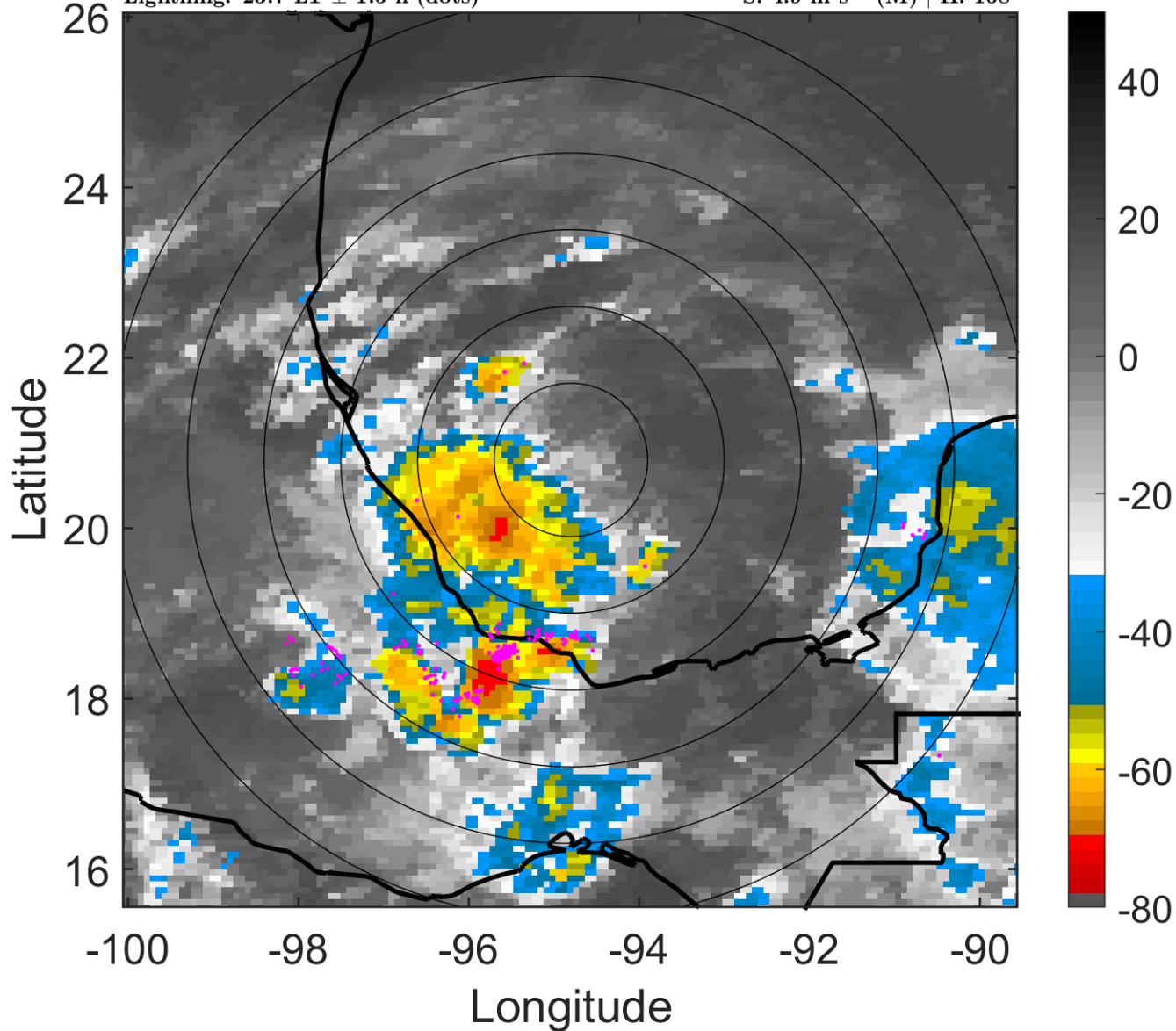
t: 2007092706 (23.7 LT)

Lightning: 23.7 LT  $\pm$  1.5 h (dots)

PT: LLCP | EA: ACT

13L (LORENZO) | 30 kt TD

S: 4.9 m s<sup>-1</sup> (M) | H: 168°



### 6-h IR BT Differences & Lightning

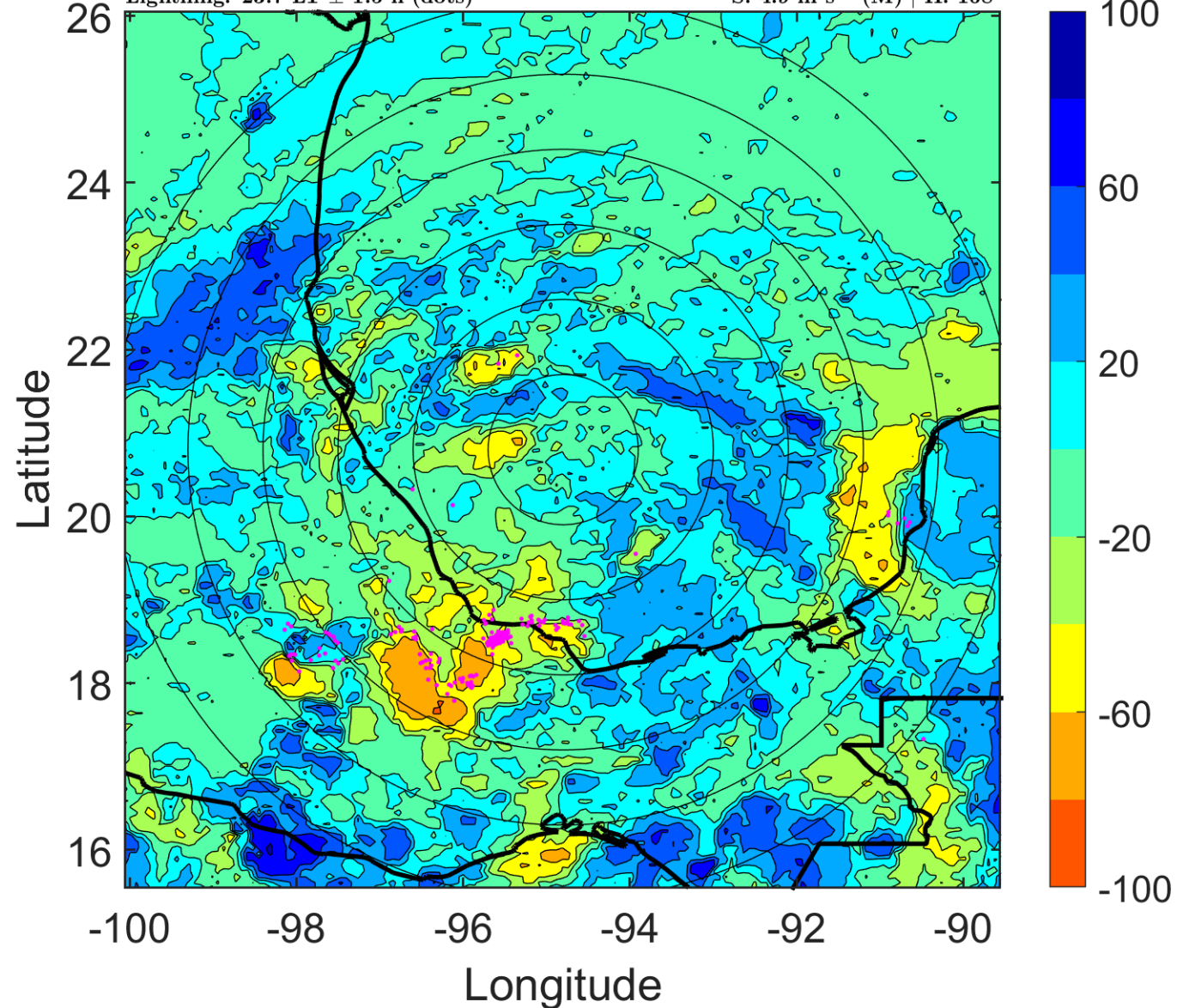
$\Delta$ t: 2007092706 (23.7 LT) - 2007092700 (17.7 LT)

Lightning: 23.7 LT  $\pm$  1.5 h (dots)

PT: LLCP | EA: ACT

13L (LORENZO) | 30 kt TD

S: 4.9 m s<sup>-1</sup> (M) | H: 168°



### IR BT & Lightning

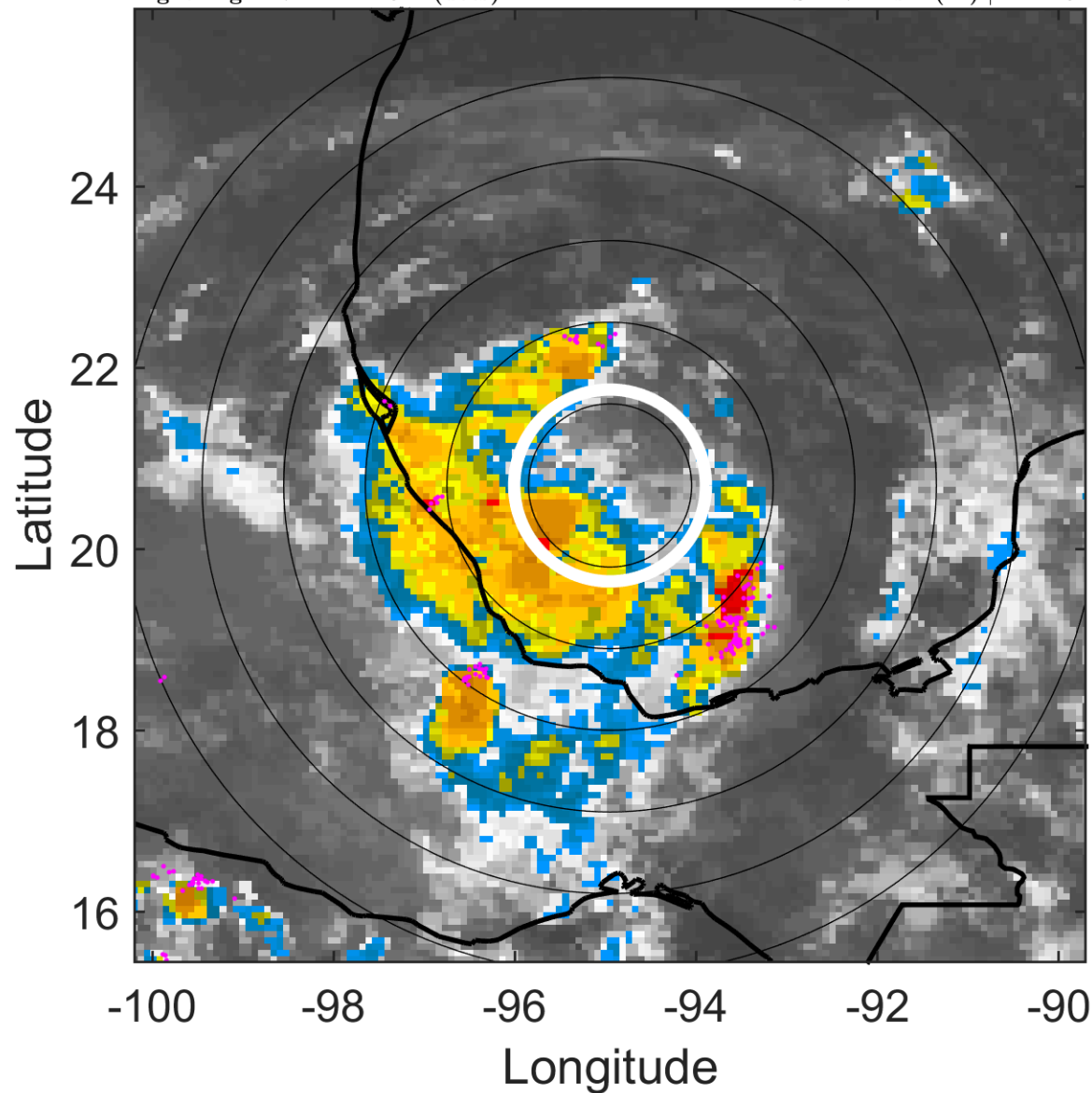
t: 2007092709 (2.7 LT)

Lightning: 2.7 LT  $\pm$  1.5 h (dots)

PT: LLCP | EA: ACT

13L (LORENZO) | 37.5 kt TS

S: 4.7 m s<sup>-1</sup> (M) | H: 149°



### 6-h IR BT Differences & Lightning

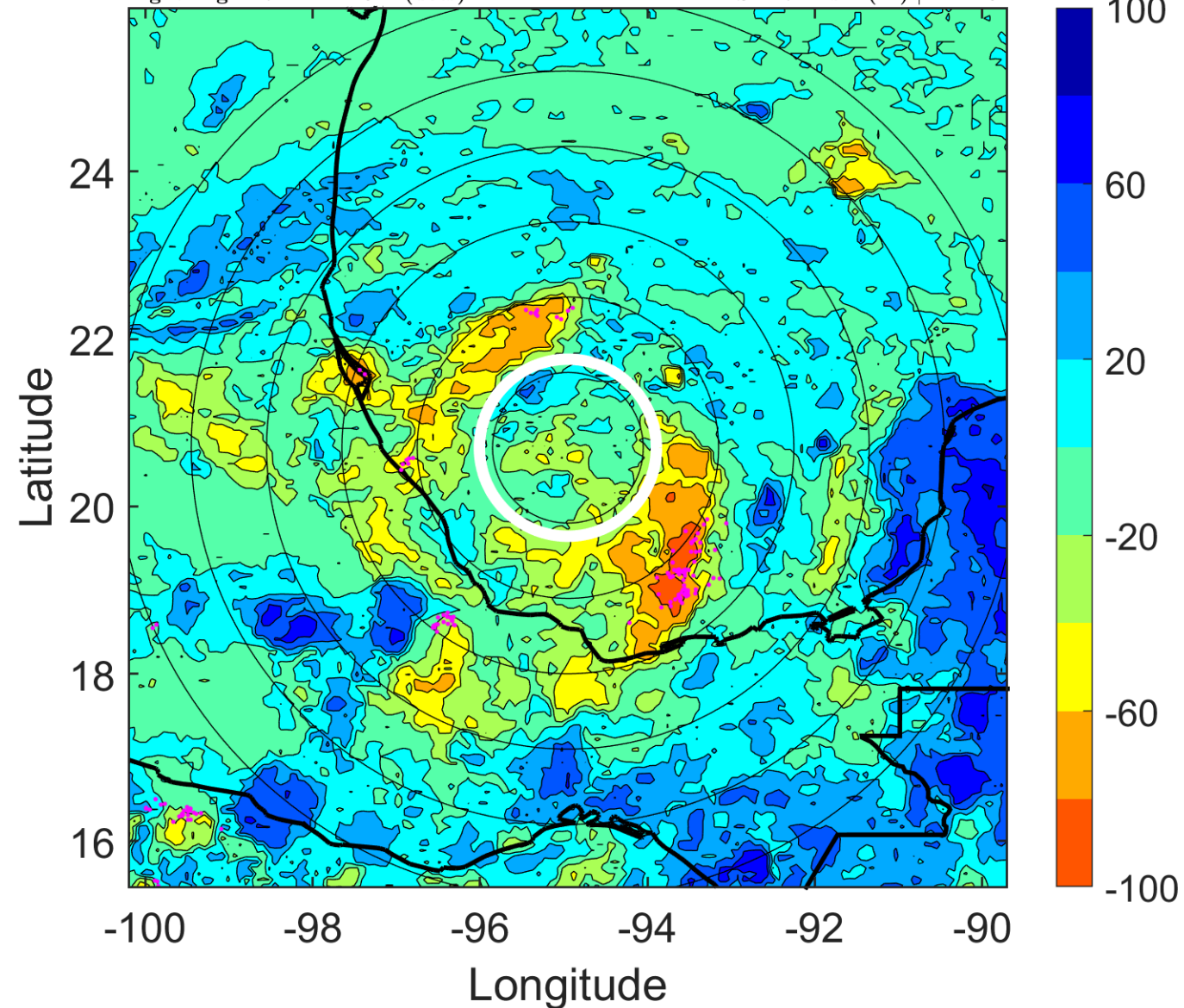
$\Delta$ t: 2007092709 (2.7 LT) - 2007092703 (20.7 LT)

Lightning: 2.7 LT  $\pm$  1.5 h (dots)

PT: LLCP | EA: ACT

13L (LORENZO) | 37.5 kt TS

S: 4.7 m s<sup>-1</sup> (M) | H: 149°



### IR BT & Lightning

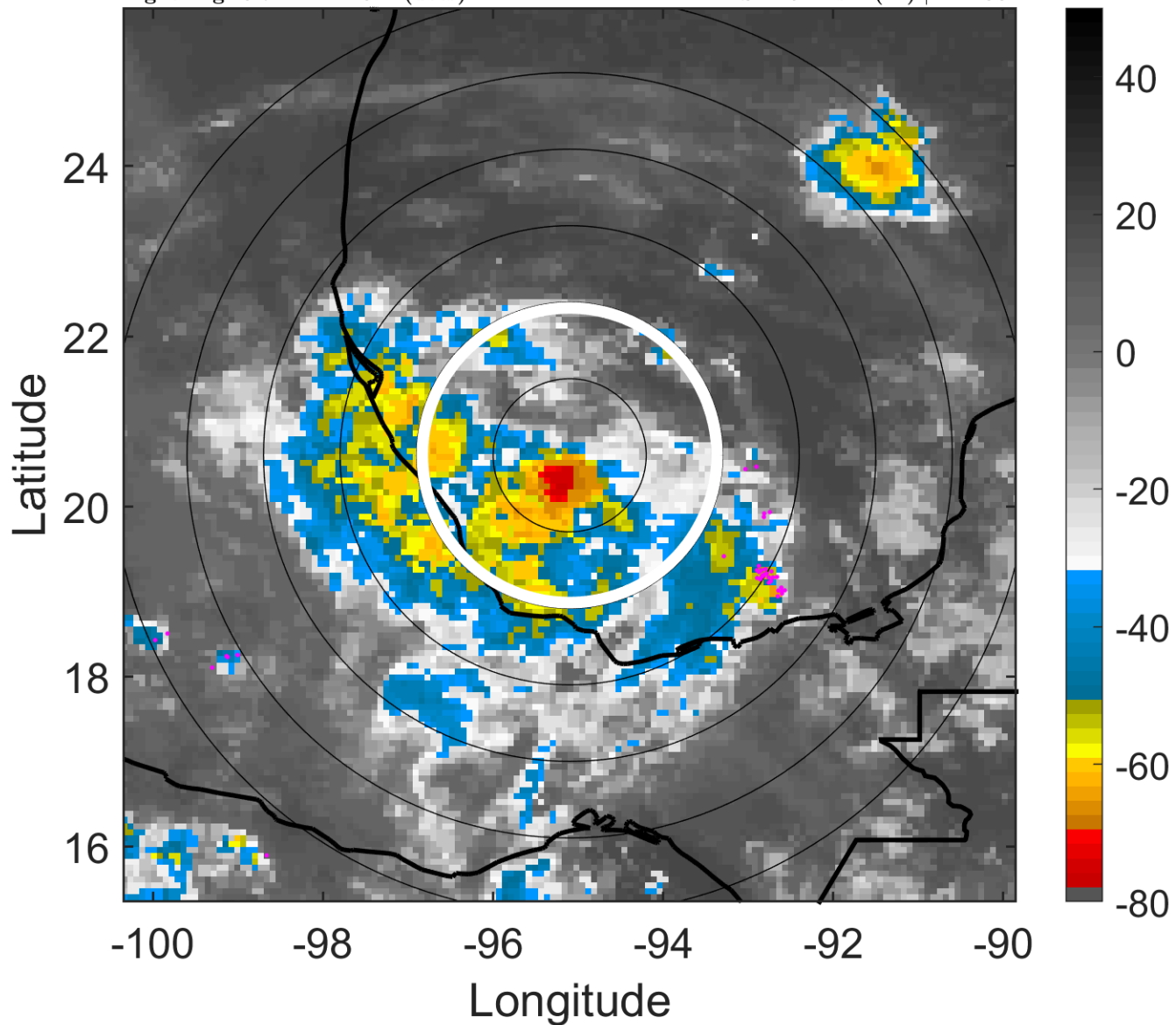
t: 2007092712 (5.7 LT)

Lightning: 5.7 LT  $\pm$  1.5 h (dots)

PT: LLCP | EA: ACT

13L (LORENZO) | 45 kt TS

S: 4.6 m s<sup>-1</sup> (M) | H: 130°



### 6-h IR BT Differences & Lightning

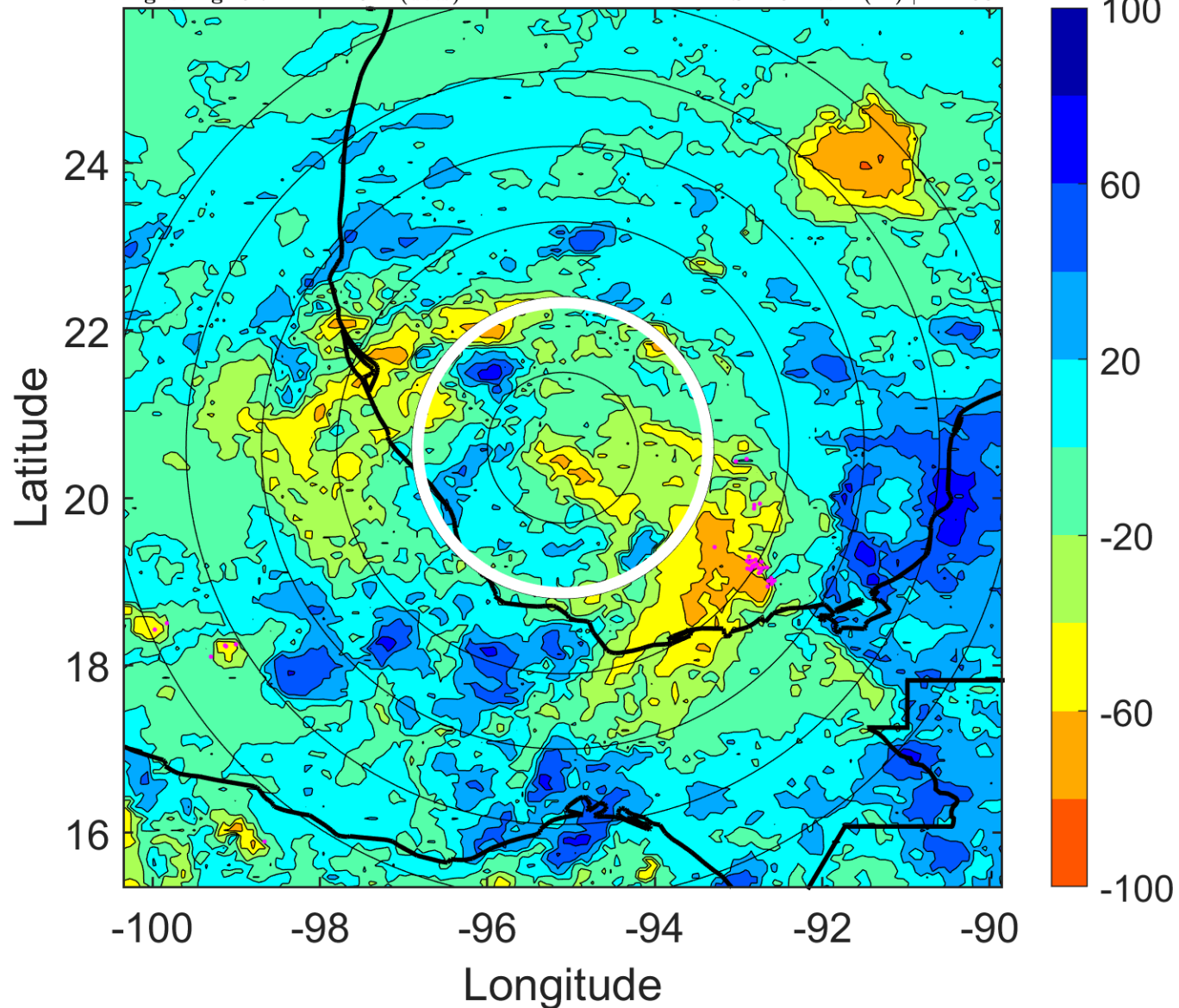
$\Delta$ t: 2007092712 (5.7 LT) - 2007092706 (23.7 LT)

Lightning: 5.7 LT  $\pm$  1.5 h (dots)

PT: LLCP | EA: ACT

13L (LORENZO) | 45 kt TS

S: 4.6 m s<sup>-1</sup> (M) | H: 130°



### IR BT & Lightning

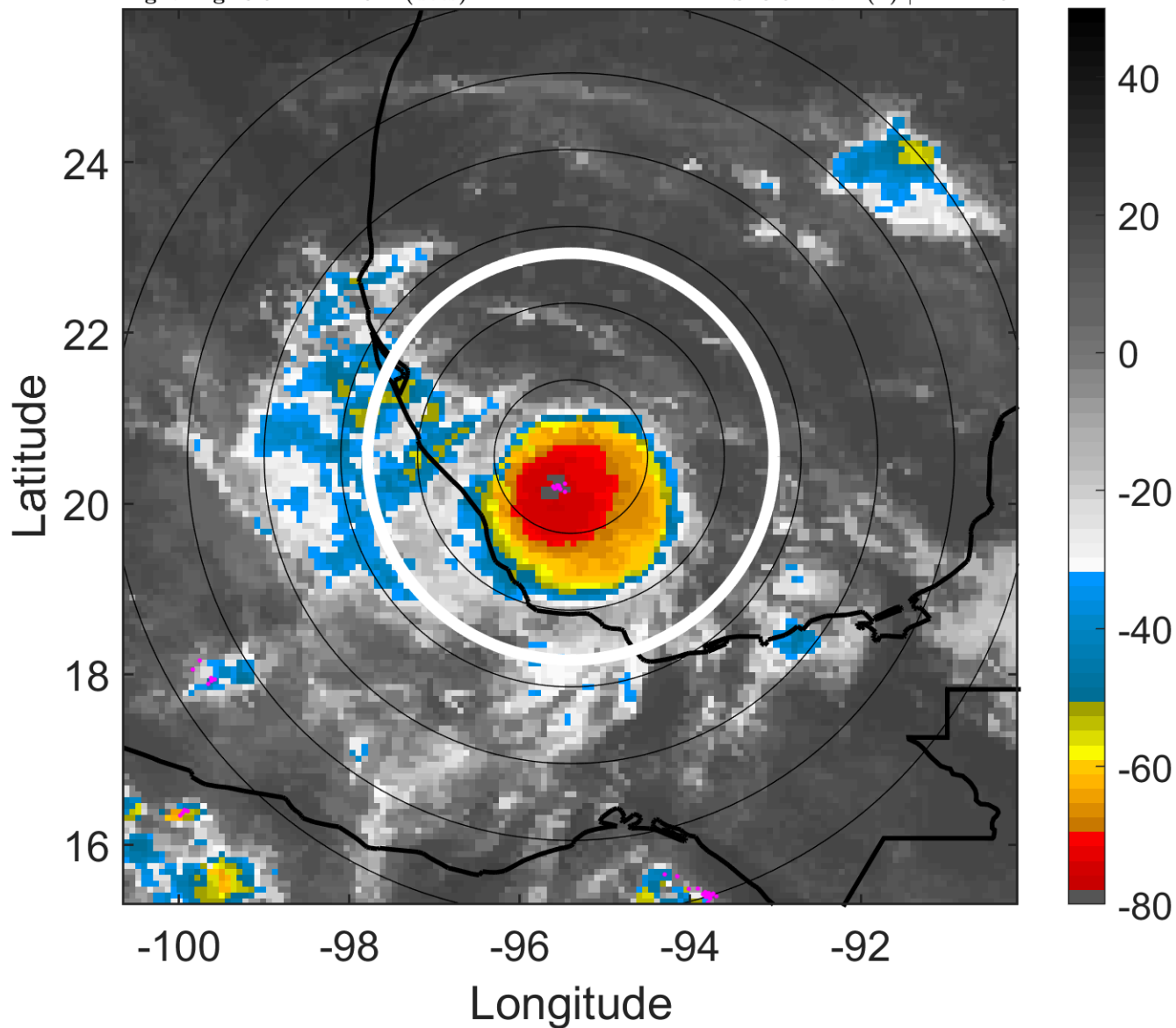
t: 2007092715 (8.6 LT)

Lightning: 8.6 LT  $\pm$  1.5 h (dots)

PT: LLCP | EA: ACT

13L (LORENZO) | 52.5 kt TS

S: 3.6 m s<sup>-1</sup> (L) | H: 144.5°



### 6-h IR BT Differences & Lightning

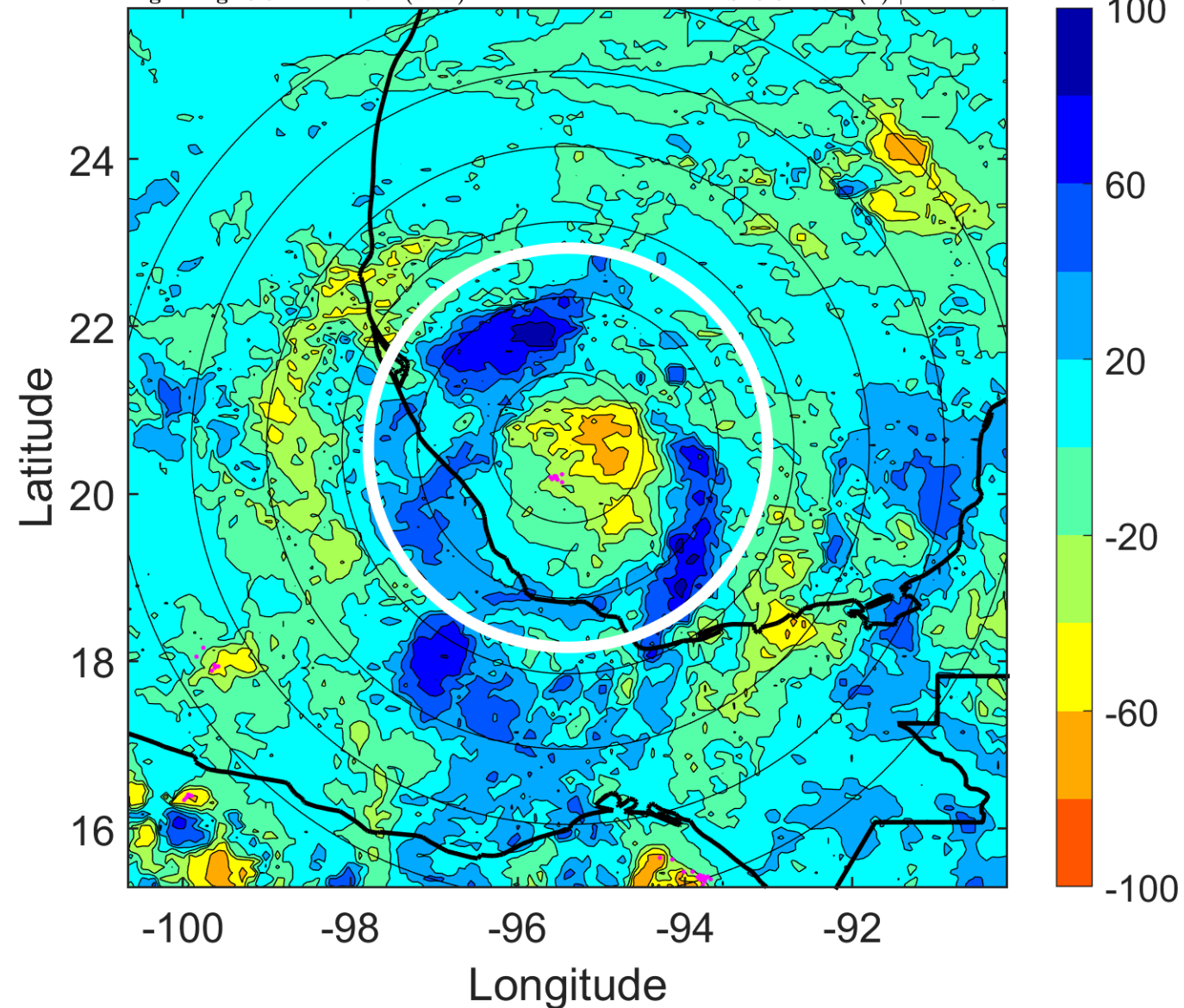
$\Delta$ t: 2007092715 (8.6 LT) - 2007092709 (2.7 LT)

Lightning: 8.6 LT  $\pm$  1.5 h (dots)

PT: LLCP | EA: ACT

13L (LORENZO) | 52.5 kt TS

S: 3.6 m s<sup>-1</sup> (L) | H: 144.5°



### IR BT & Lightning

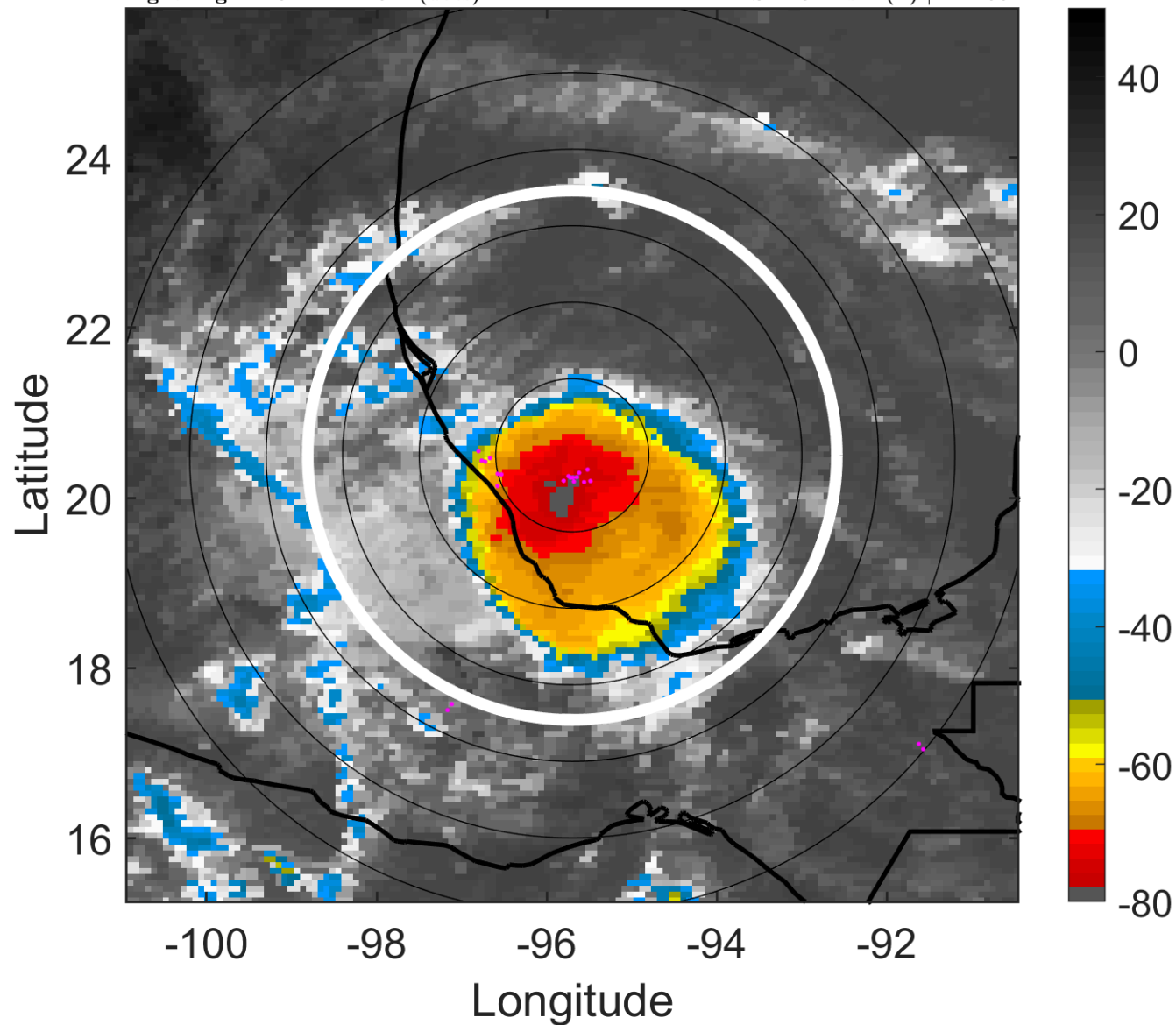
t: 2007092718 (11.6 LT)

Lightning: 11.6 LT  $\pm$  1.5 h (dots)

PT: LLCP | EA: ACT

13L (LORENZO) | 60 kt TS

S: 2.6 m s<sup>-1</sup> (L) | H: 159°



### 6-h IR BT Differences & Lightning

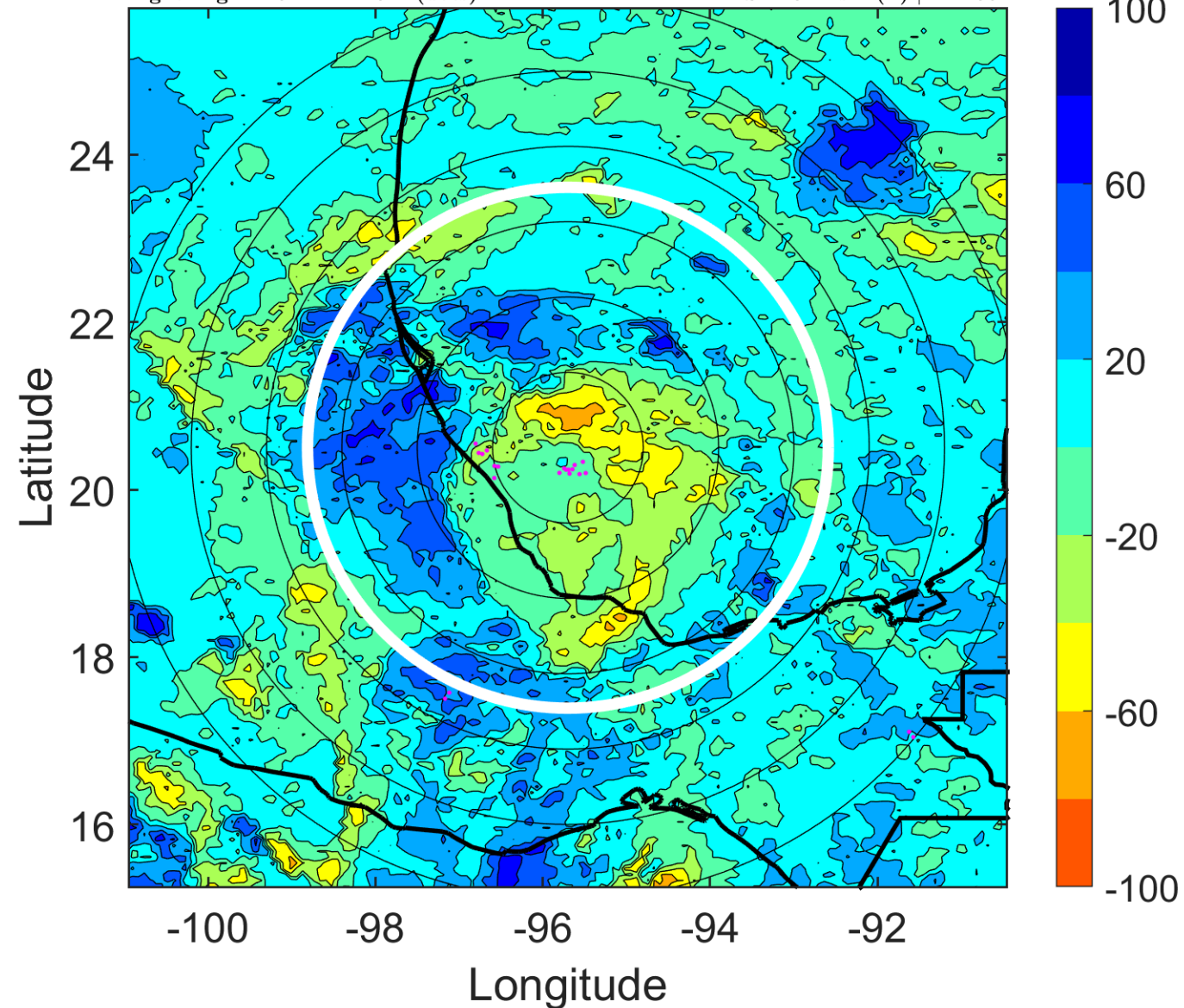
$\Delta$ t: 2007092718 (11.6 LT) - 2007092712 (5.7 LT)

Lightning: 11.6 LT  $\pm$  1.5 h (dots)

PT: LLCP | EA: ACT

13L (LORENZO) | 60 kt TS

S: 2.6 m s<sup>-1</sup> (L) | H: 159°



### IR BT & Lightning

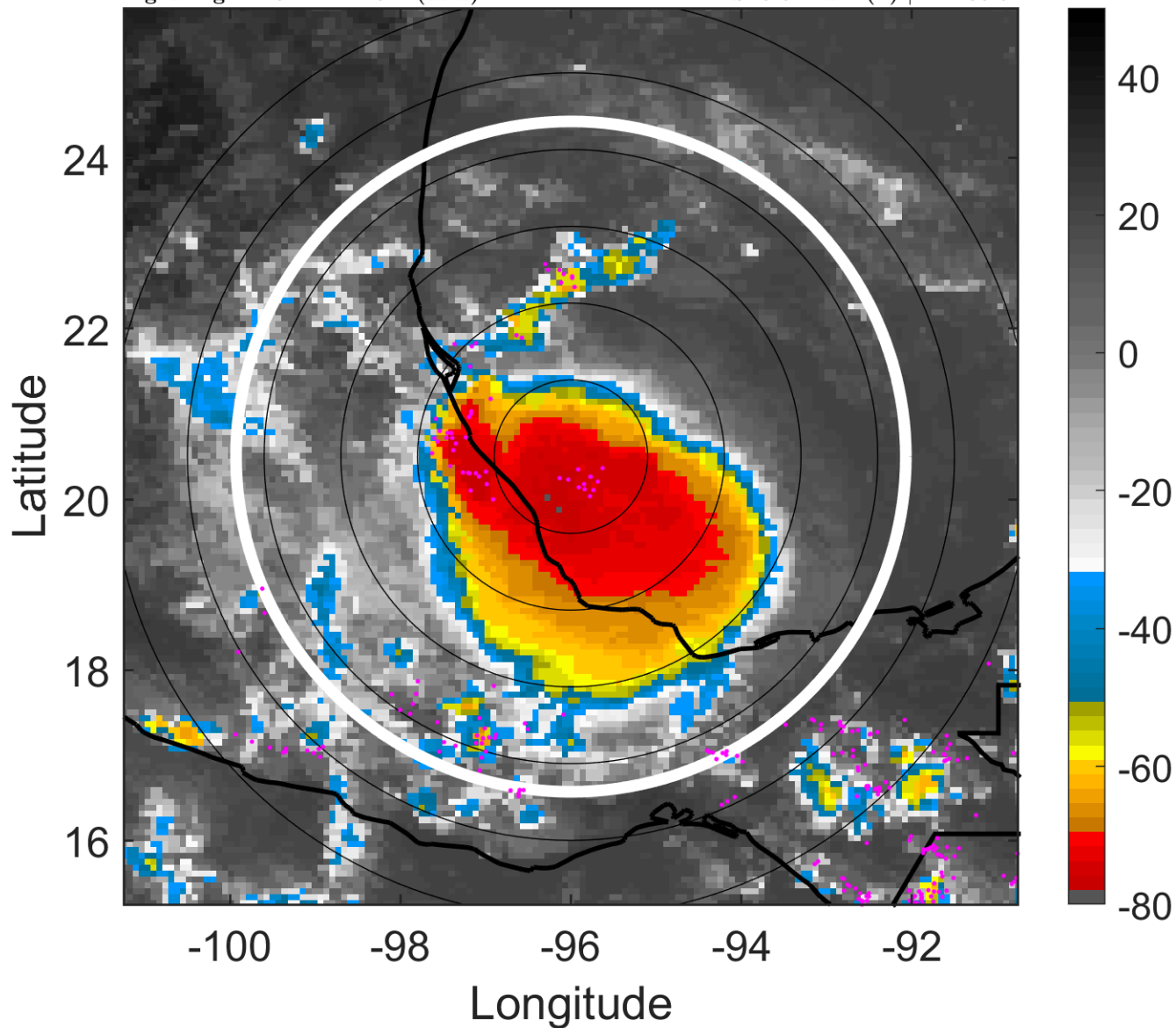
t: 2007092721 (14.6 LT)

Lightning: 14.6 LT  $\pm$  1.5 h (dots)

PT: LLCP | EA: ACT

13L (LORENZO) | 65 kt C1

S: 3.6 m s<sup>-1</sup> (L) | H: 138.5°



### 6-h IR BT Differences & Lightning

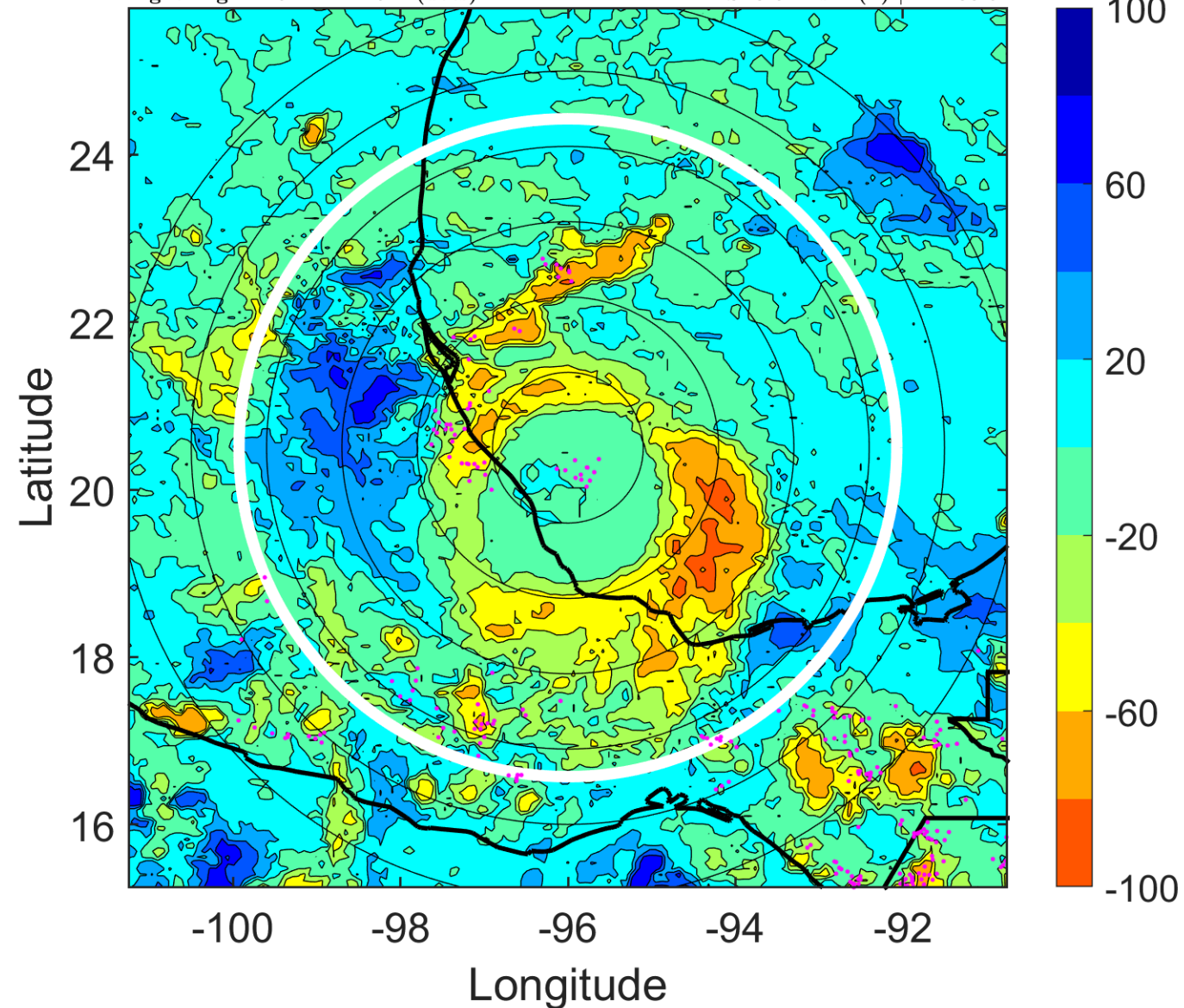
$\Delta$ t: 2007092721 (14.6 LT) - 2007092715 (8.6 LT)

Lightning: 14.6 LT  $\pm$  1.5 h (dots)

PT: LLCP | EA: ACT

13L (LORENZO) | 65 kt C1

S: 3.6 m s<sup>-1</sup> (L) | H: 138.5°





### IR BT & Lightning

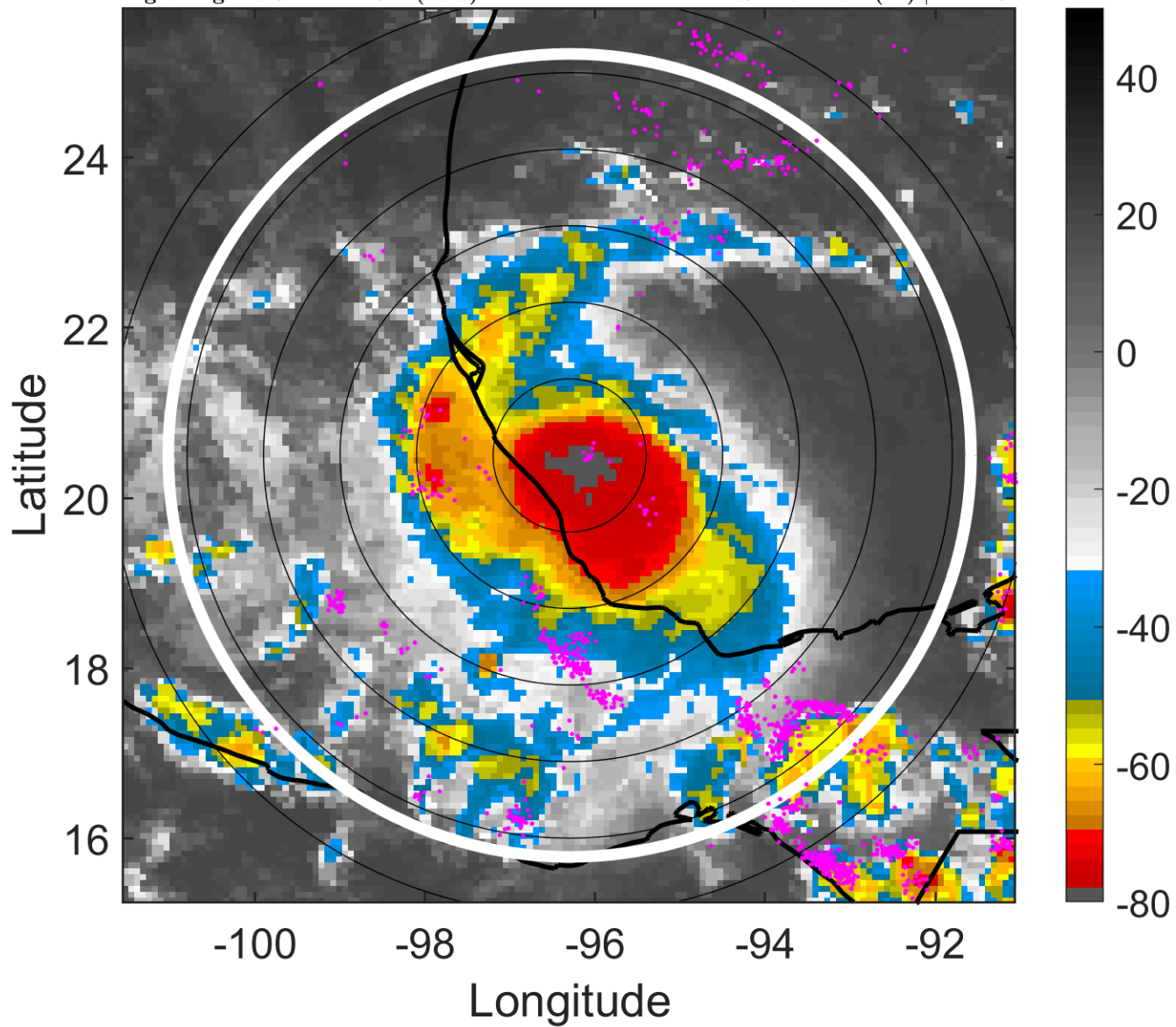
t: 2007092800 (17.6 LT)

Lightning: 17.6 LT  $\pm$  1.5 h (dots)

PT: LLCP | EA: ACT

13L (LORENZO) | 70 kt C1

S: 4.7 m s<sup>-1</sup> (M) | H: 118°



### 6-h IR BT Differences & Lightning

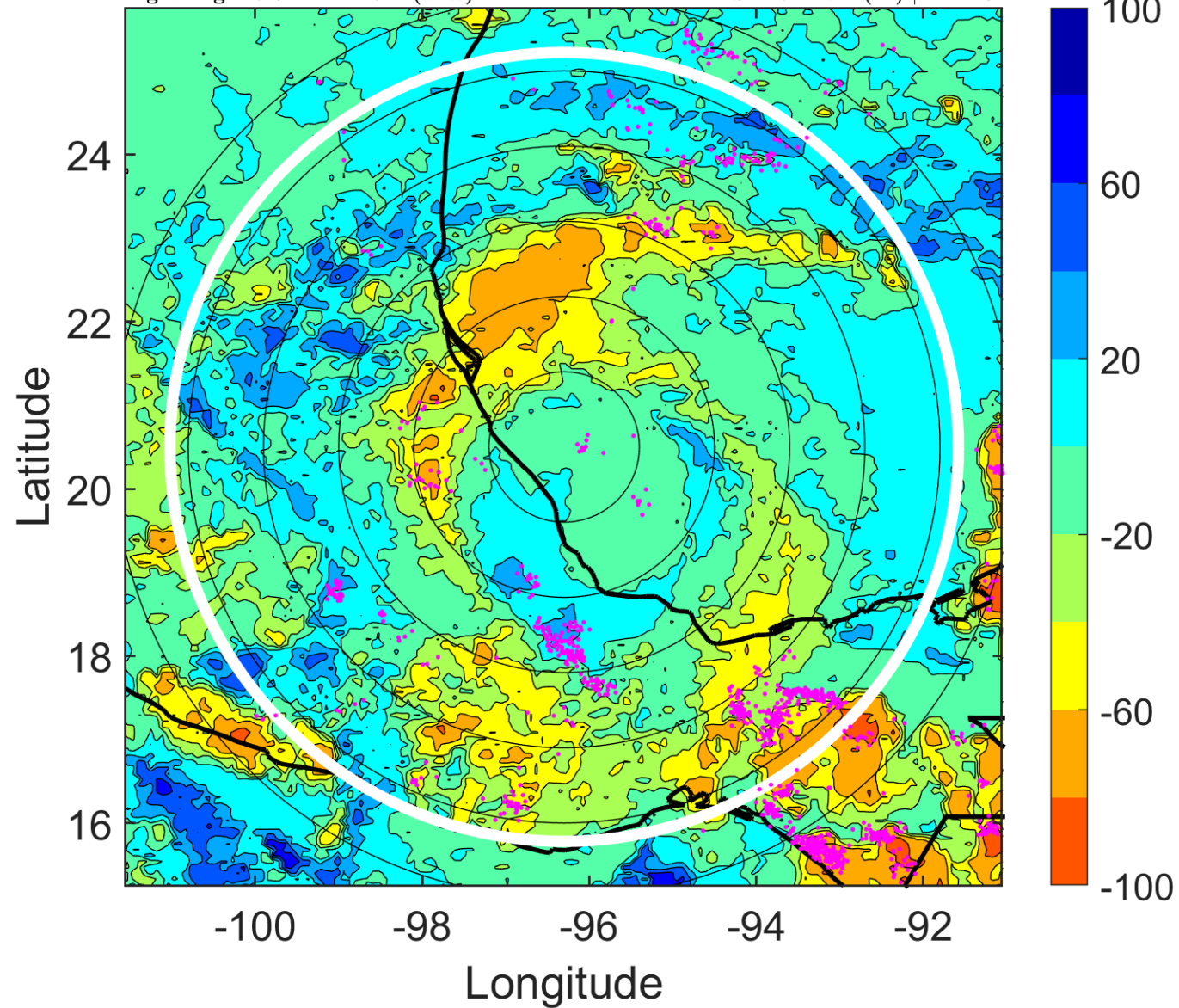
$\Delta$ t: 2007092800 (17.6 LT) - 2007092718 (11.6 LT)

Lightning: 17.6 LT  $\pm$  1.5 h (dots)

PT: LLCP | EA: ACT

13L (LORENZO) | 70 kt C1

S: 4.7 m s<sup>-1</sup> (M) | H: 118°



### IR BT & Lightning

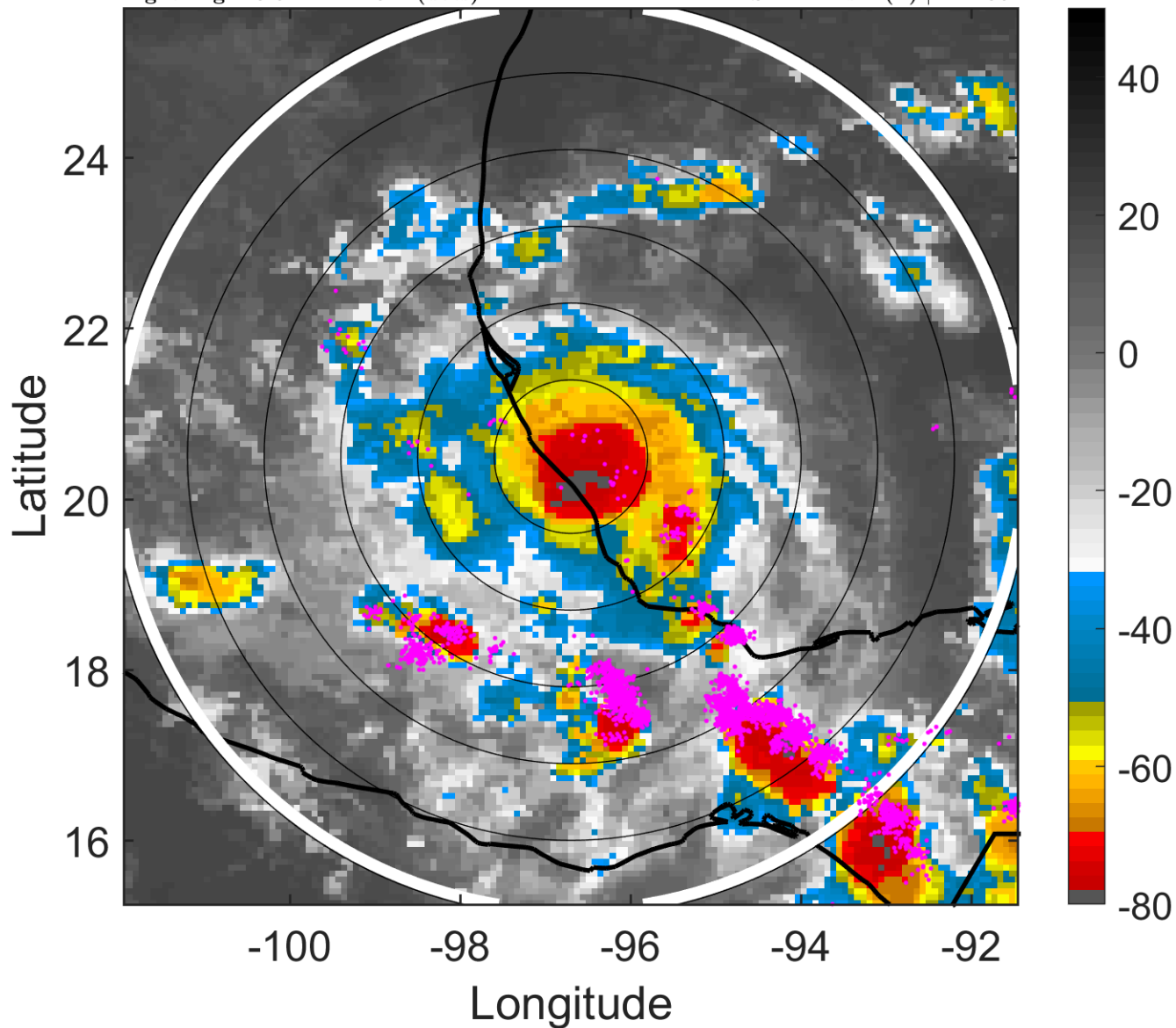
t: 2007092803 (20.6 LT)

Lightning: 20.6 LT  $\pm$  1.5 h (dots)

PT: LLCP | EA: ACT

13L (LORENZO) | 67.5 kt C1

S: 4.2 m s<sup>-1</sup> (L) | H: 106°



### 6-h IR BT Differences & Lightning

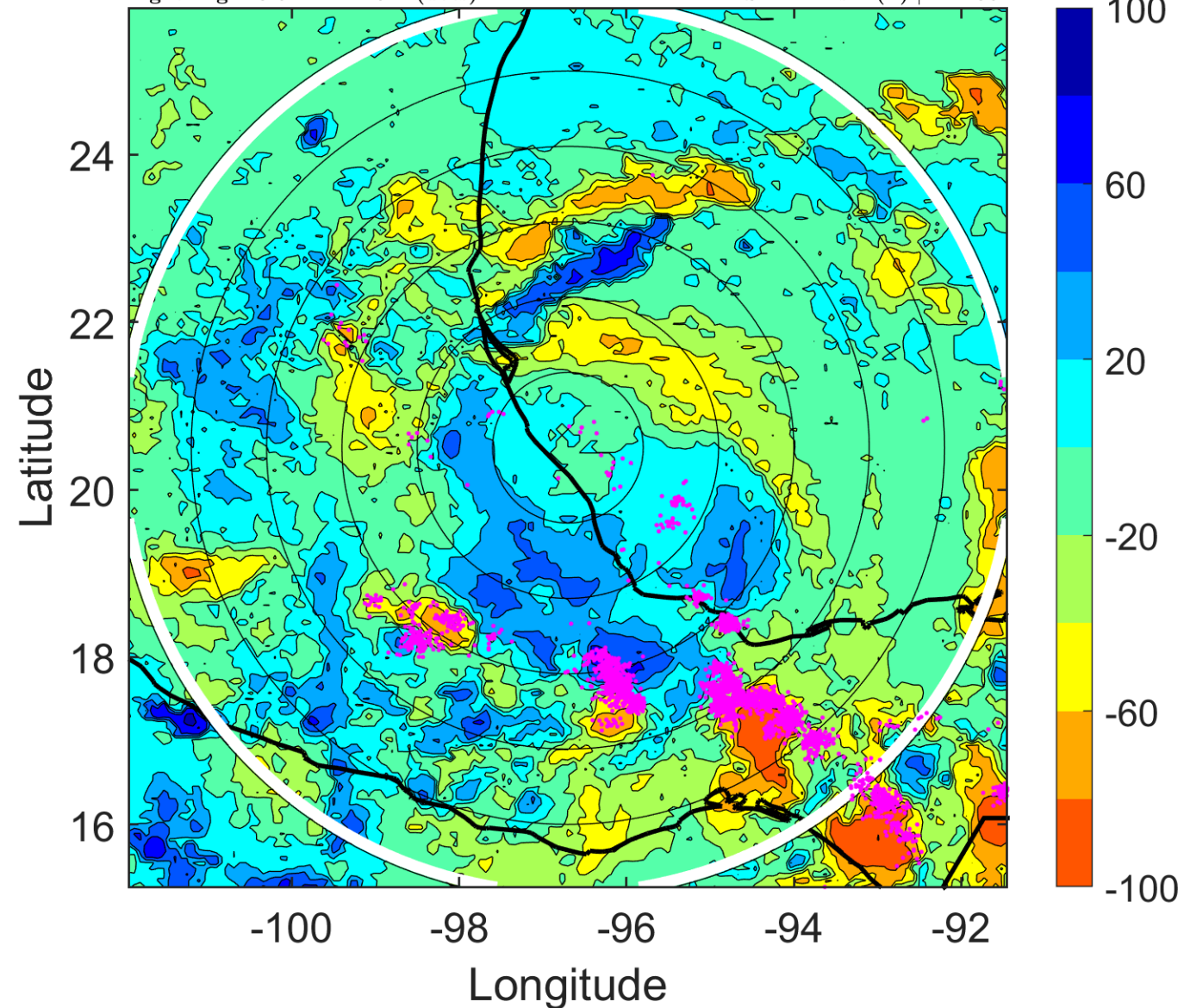
$\Delta$ t: 2007092803 (20.6 LT) - 2007092721 (14.6 LT)

Lightning: 20.6 LT  $\pm$  1.5 h (dots)

PT: LLCP | EA: ACT

13L (LORENZO) | 67.5 kt C1

S: 4.2 m s<sup>-1</sup> (L) | H: 106°



### IR BT & Lightning

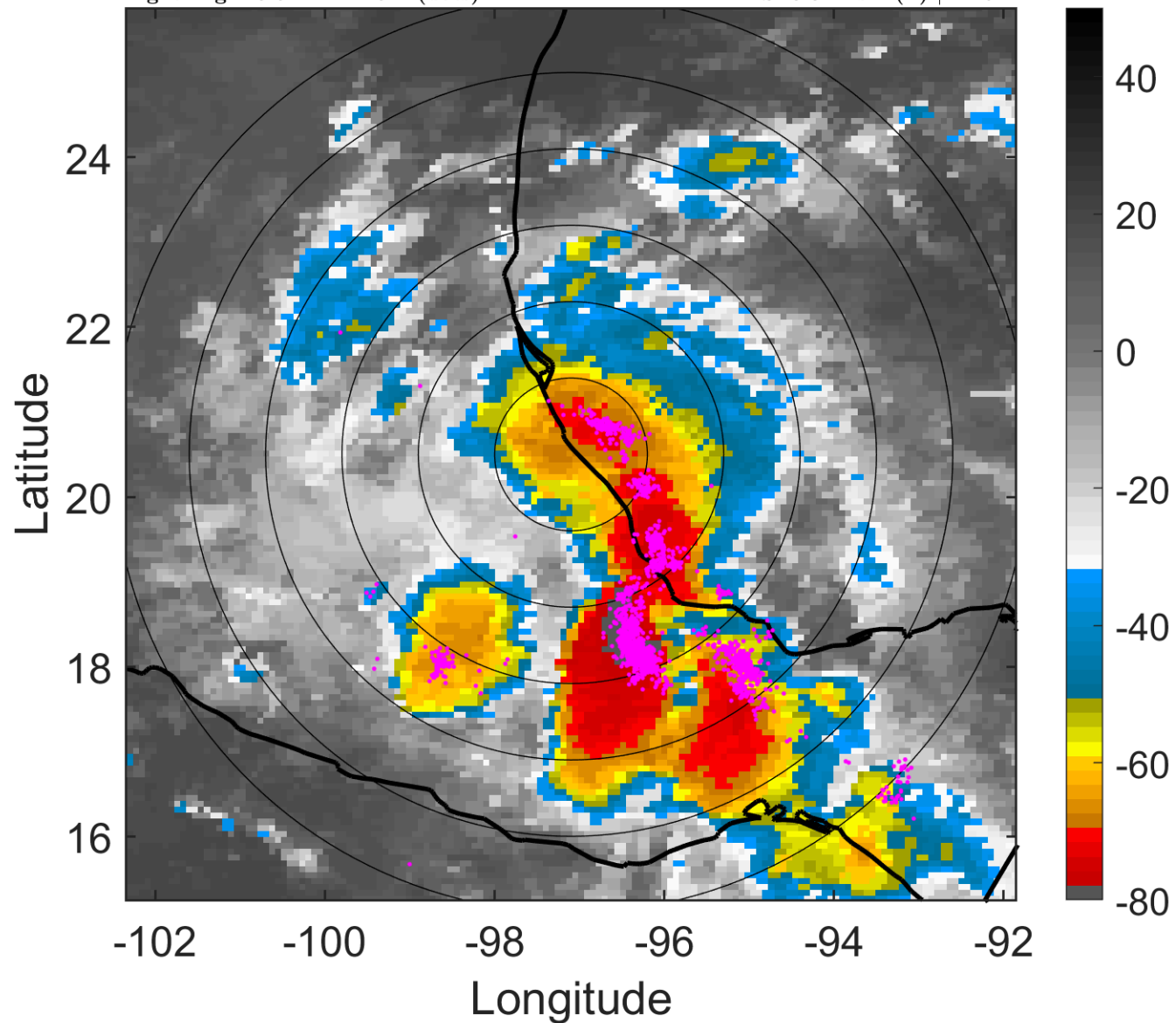
t: 2007092806 (23.5 LT)

Lightning: 23.5 LT  $\pm$  1.5 h (dots)

PT: LLCP | EA: ACT

13L (LORENZO) | 65 kt C1

S: 3.8 m s<sup>-1</sup> (L) | H: 94°



### 6-h IR BT Differences & Lightning

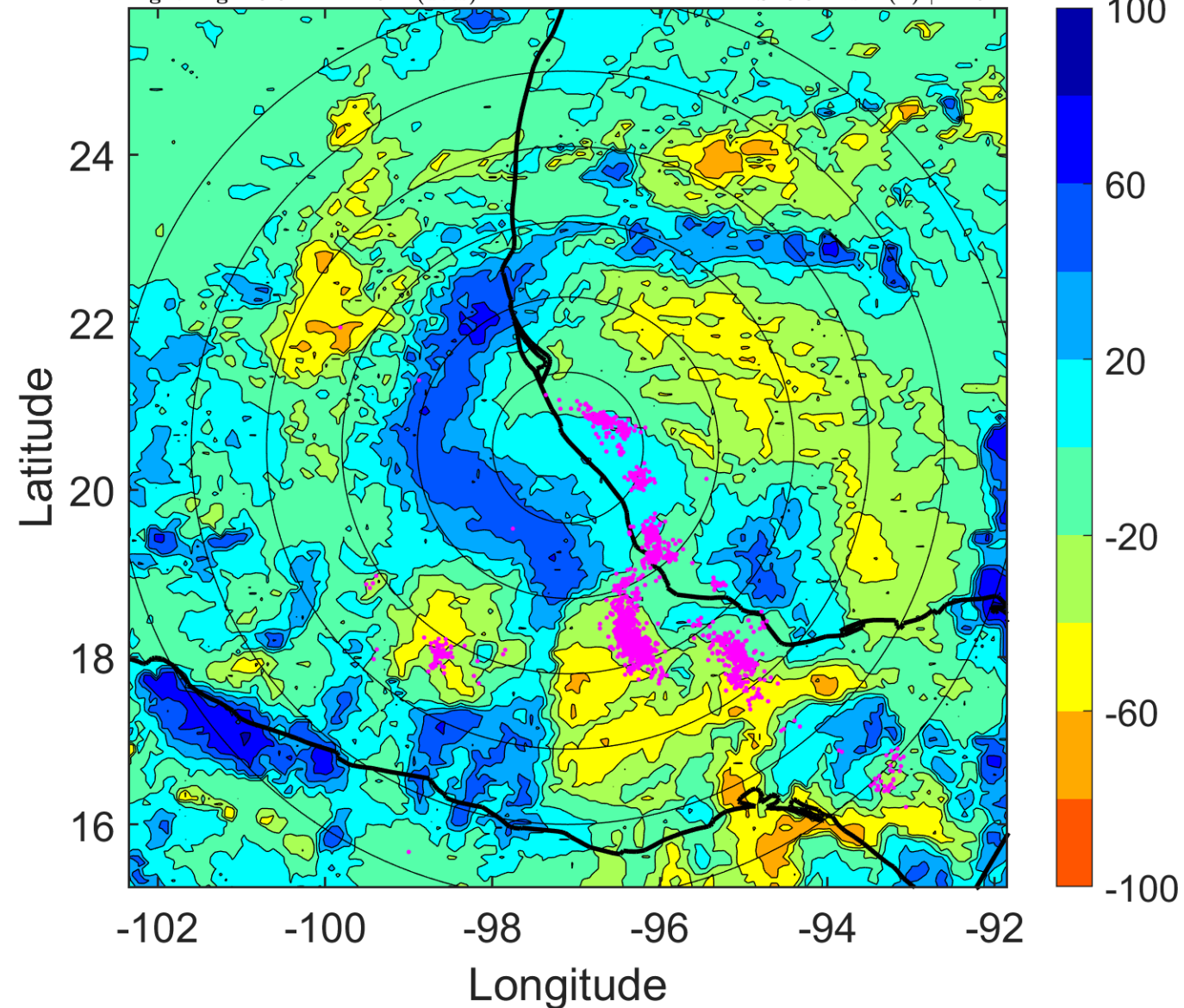
$\Delta$ t: 2007092806 (23.5 LT) - 2007092800 (17.6 LT)

Lightning: 23.5 LT  $\pm$  1.5 h (dots)

PT: LLCP | EA: ACT

13L (LORENZO) | 65 kt C1

S: 3.8 m s<sup>-1</sup> (L) | H: 94°



### IR BT & Lightning

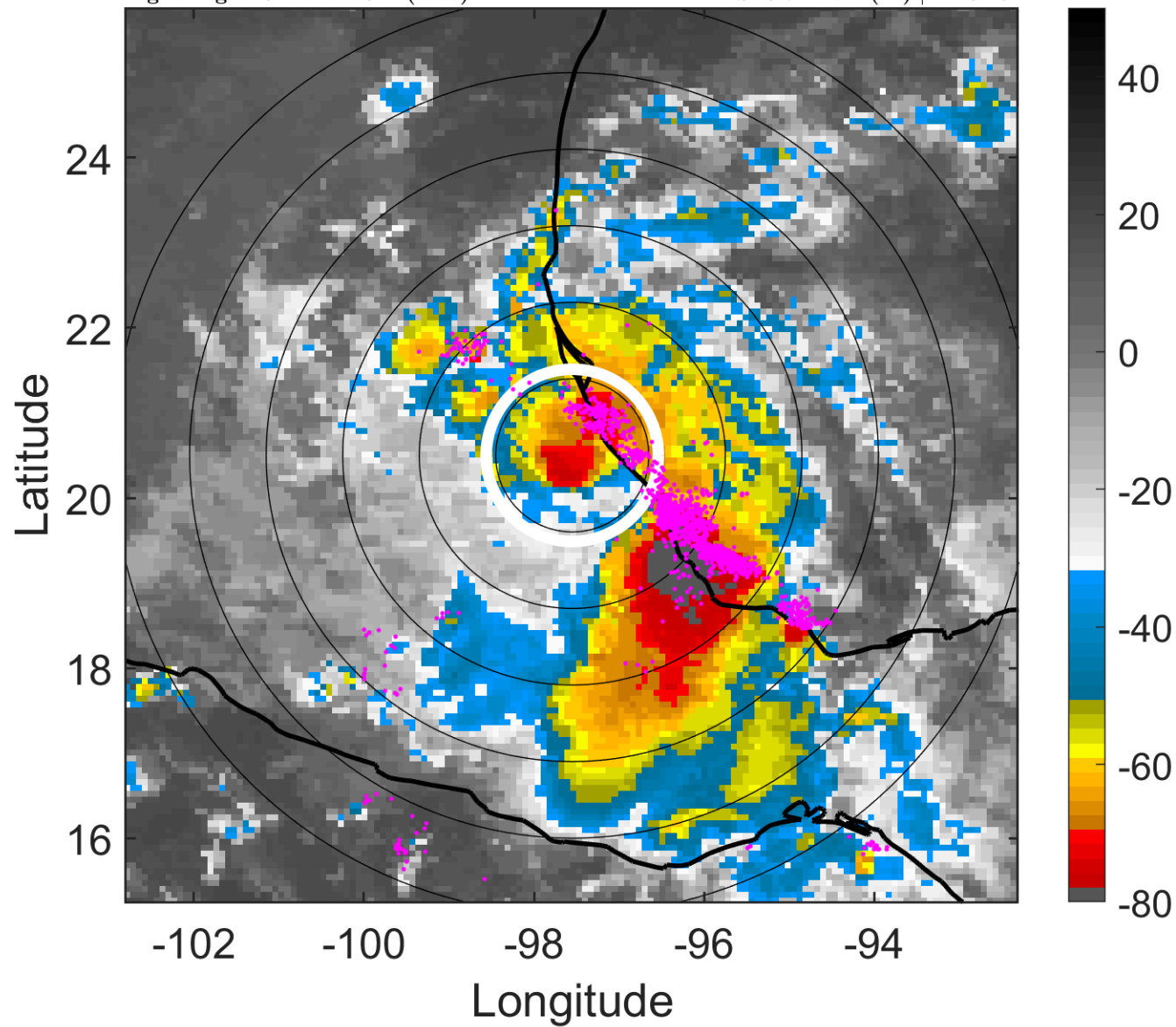
t: 2007092809 (2.5 LT)

Lightning: 2.5 LT  $\pm$  1.5 h (dots)

### LAND EFFECTS

13L (LORENZO) | 47.5 kt TS

S: 5.7 m s<sup>-1</sup> (M) | H: 82.5°



### 6-h IR BT Differences & Lightning

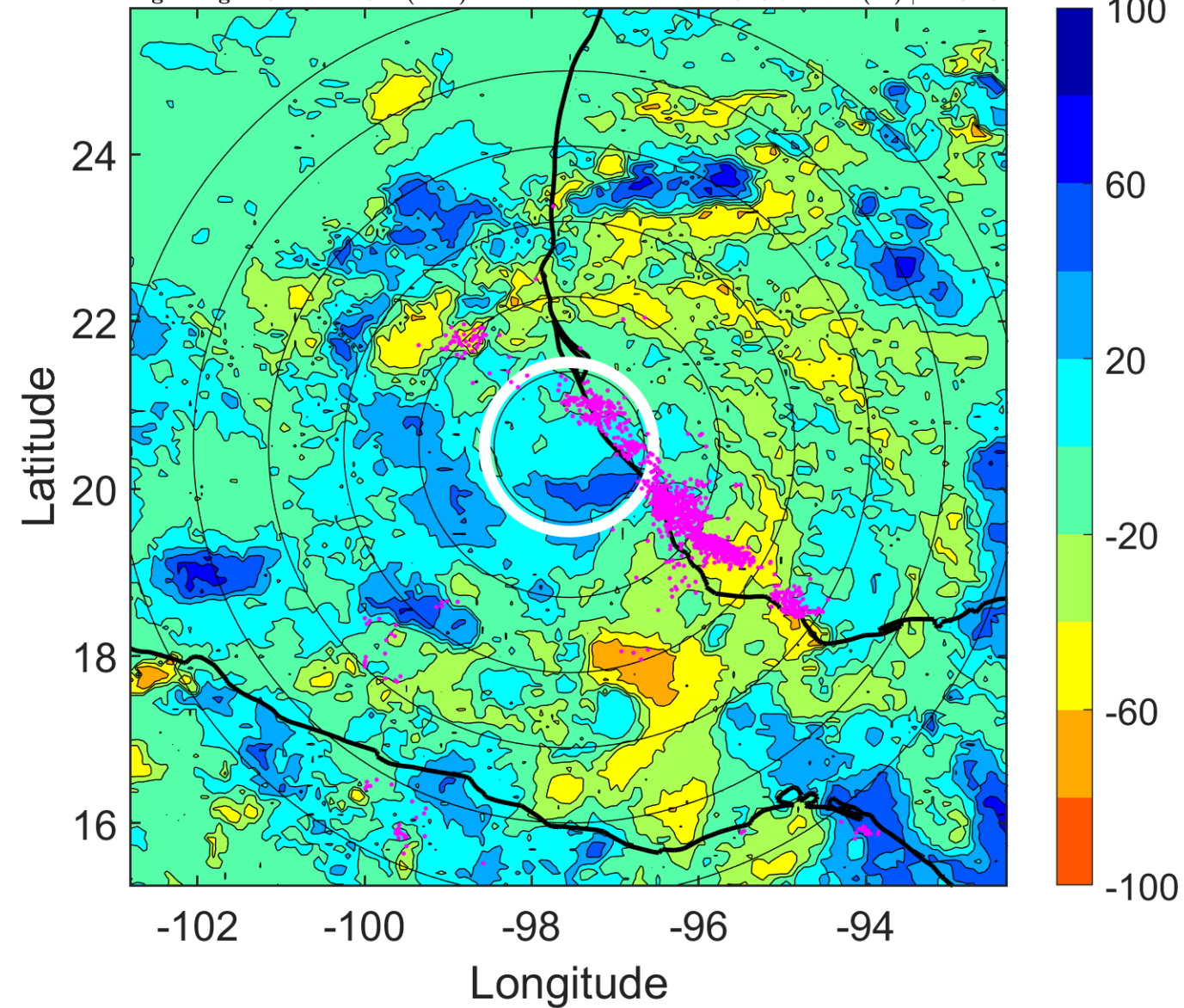
$\Delta$ t: 2007092809 (2.5 LT) - 2007092803 (20.6 LT)

Lightning: 2.5 LT  $\pm$  1.5 h (dots)

### LAND EFFECTS

13L (LORENZO) | 47.5 kt TS

S: 5.7 m s<sup>-1</sup> (M) | H: 82.5°



### IR BT & Lightning

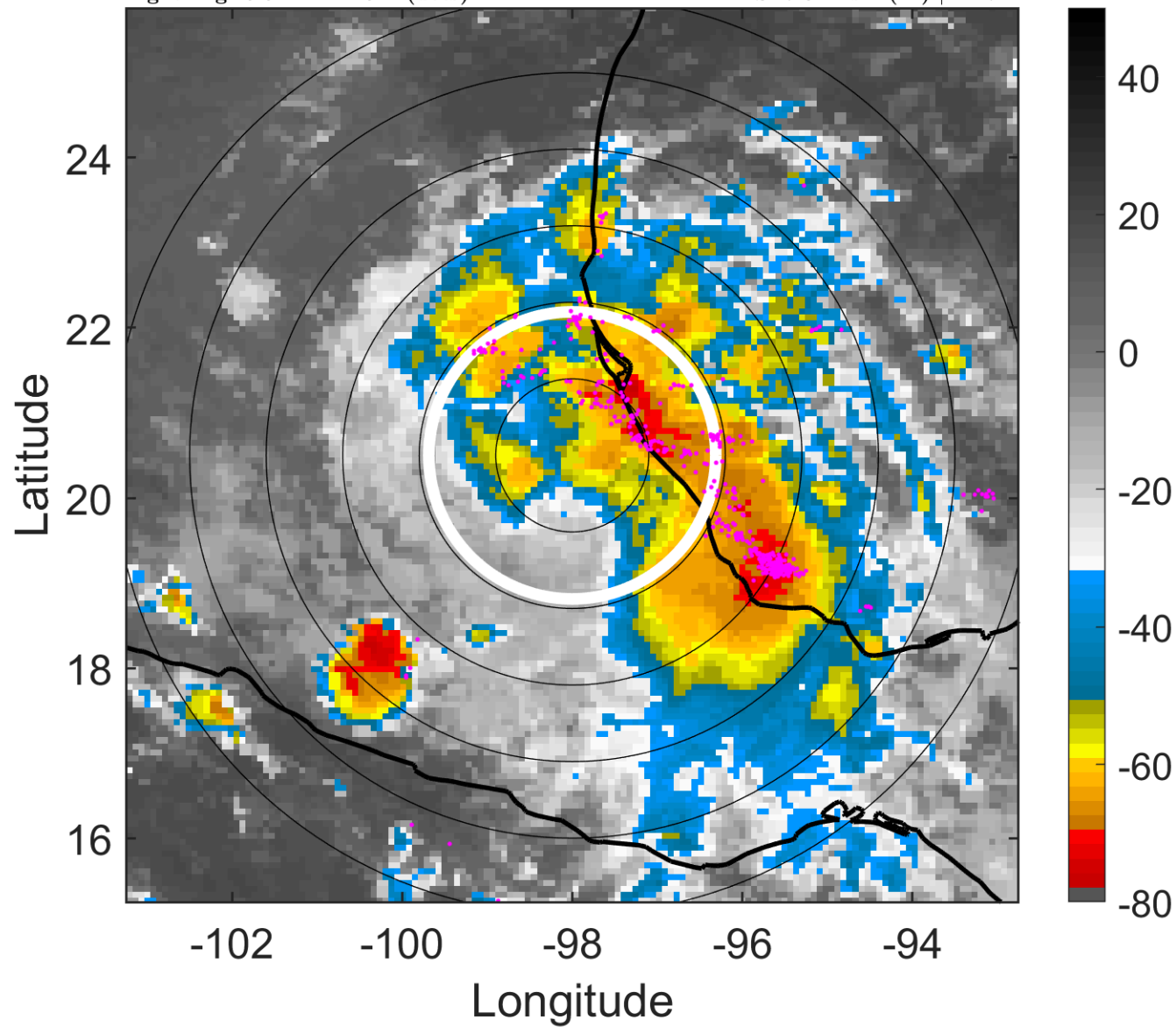
t: 2007092812 (5.5 LT)

Lightning: 5.5 LT  $\pm$  1.5 h (dots)

LAND EFFECTS

13L (LORENZO) | 30 kt TD

S: 7.6 m s<sup>-1</sup> (M) | H: 71°



### 6-h IR BT Differences & Lightning

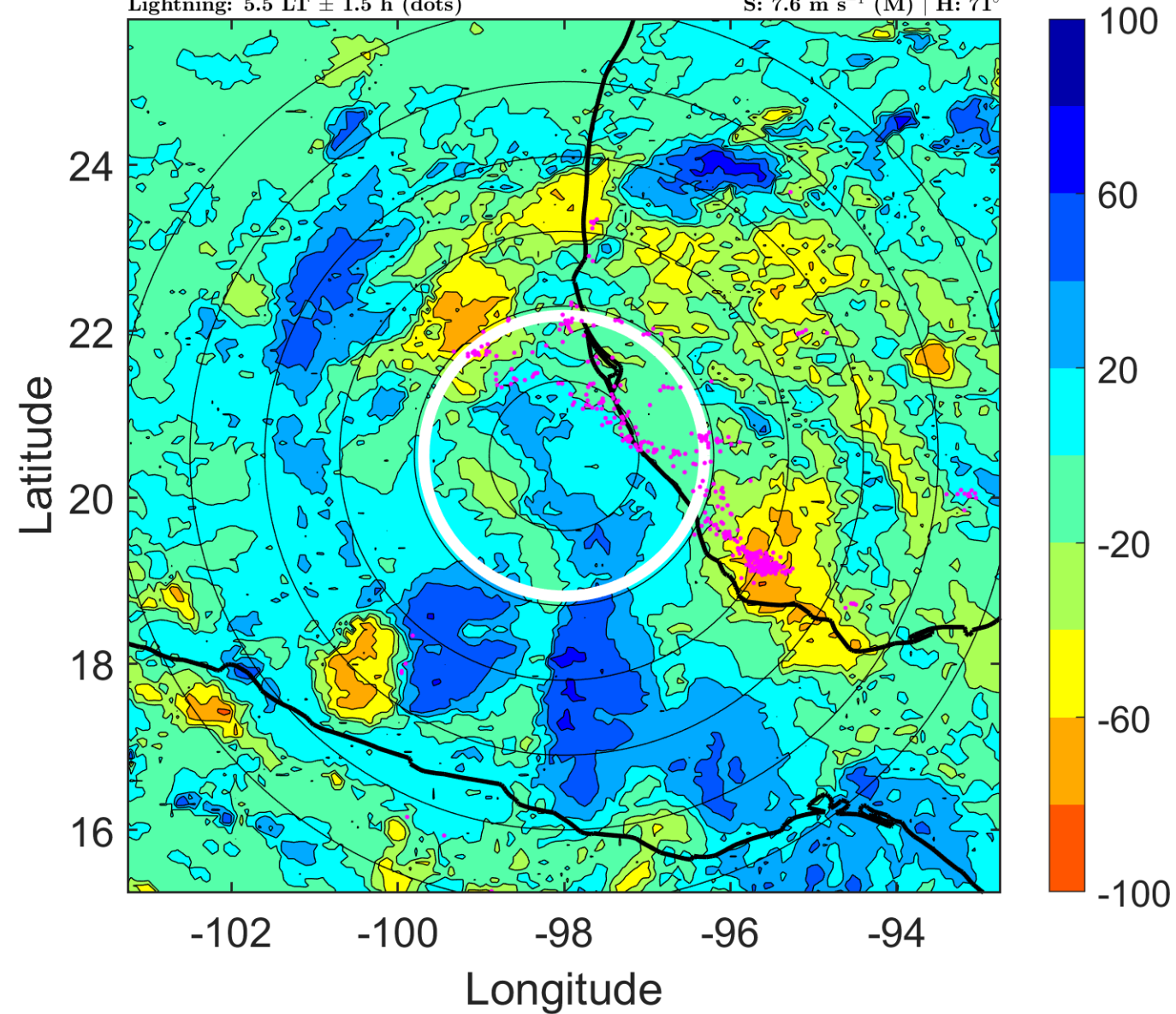
$\Delta$ t: 2007092812 (5.5 LT) - 2007092806 (23.5 LT)

Lightning: 5.5 LT  $\pm$  1.5 h (dots)

LAND EFFECTS

13L (LORENZO) | 30 kt TD

S: 7.6 m s<sup>-1</sup> (M) | H: 71°



### IR BT & Lightning

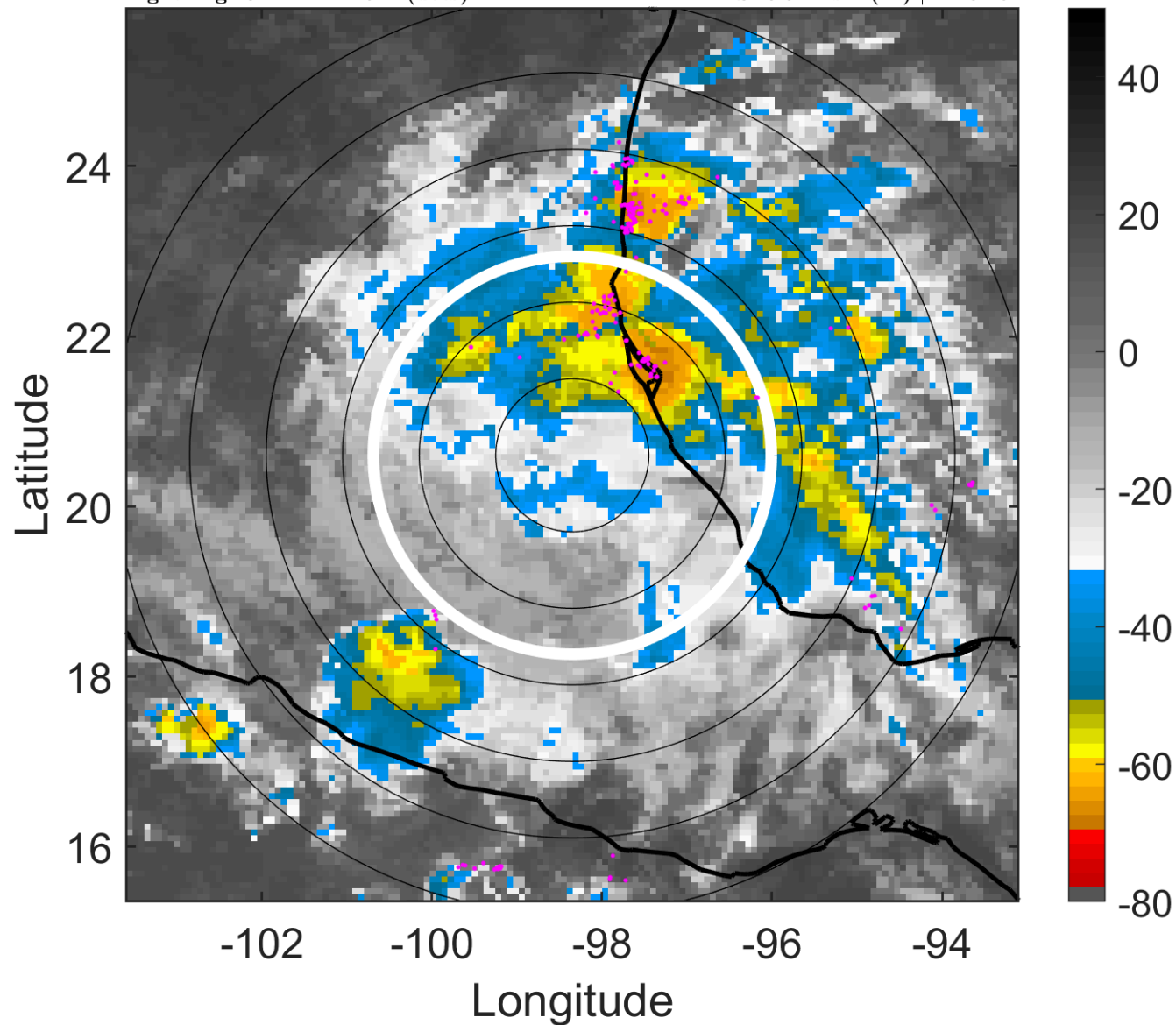
t: 2007092815 (8.4 LT)

Lightning: 8.4 LT  $\pm$  1.5 h (dots)

### LAND EFFECTS

13L (LORENZO) | 25 kt TD

S: 6.9 m s<sup>-1</sup> (M) | H: 84.5°



### 6-h IR BT Differences & Lightning

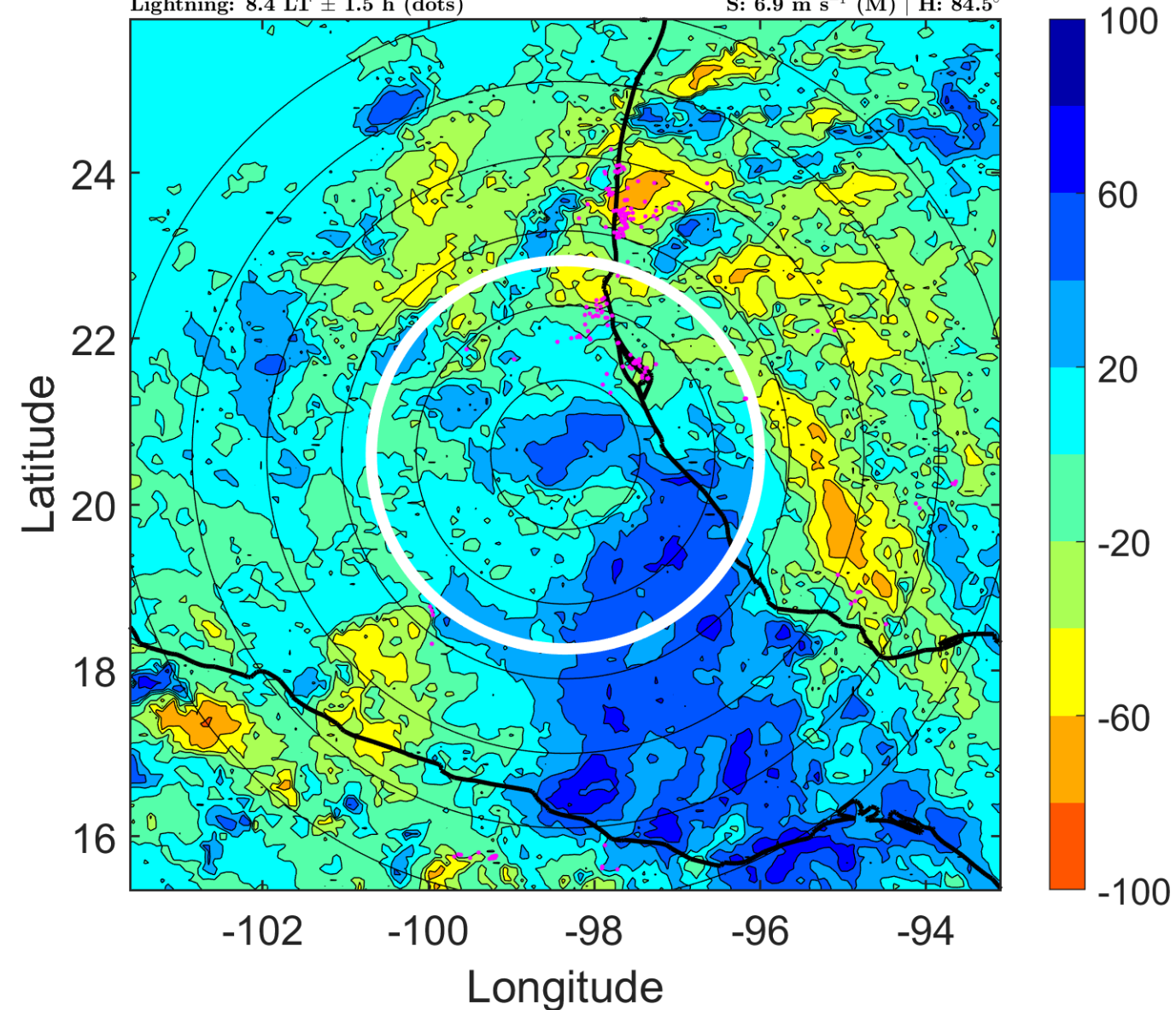
$\Delta$ t: 2007092815 (8.4 LT) - 2007092809 (2.5 LT)

Lightning: 8.4 LT  $\pm$  1.5 h (dots)

### LAND EFFECTS

13L (LORENZO) | 25 kt TD

S: 6.9 m s<sup>-1</sup> (M) | H: 84.5°



### IR BT & Lightning

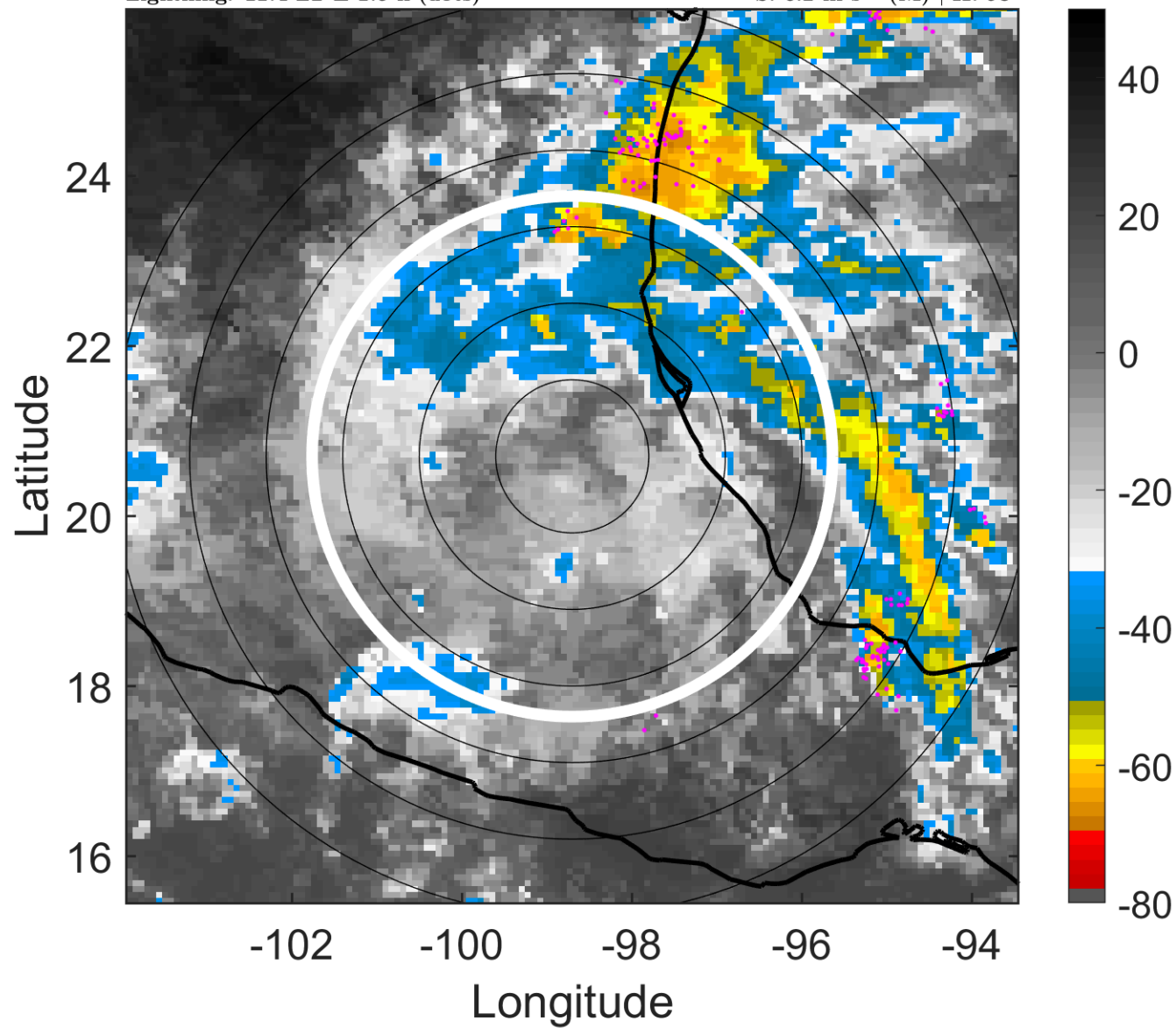
t: 2007092818 (11.4 LT)

Lightning: 11.4 LT  $\pm$  1.5 h (dots)

LAND EFFECTS

13L (LORENZO) | 20 kt TD

S: 6.2 m s<sup>-1</sup> (M) | H: 98°



### 6-h IR BT Differences & Lightning

$\Delta$ t: 2007092818 (11.4 LT) - 2007092812 (5.5 LT)

Lightning: 11.4 LT  $\pm$  1.5 h (dots)

LAND EFFECTS

13L (LORENZO) | 20 kt TD

S: 6.2 m s<sup>-1</sup> (M) | H: 98°

