

IR BT & Lightning

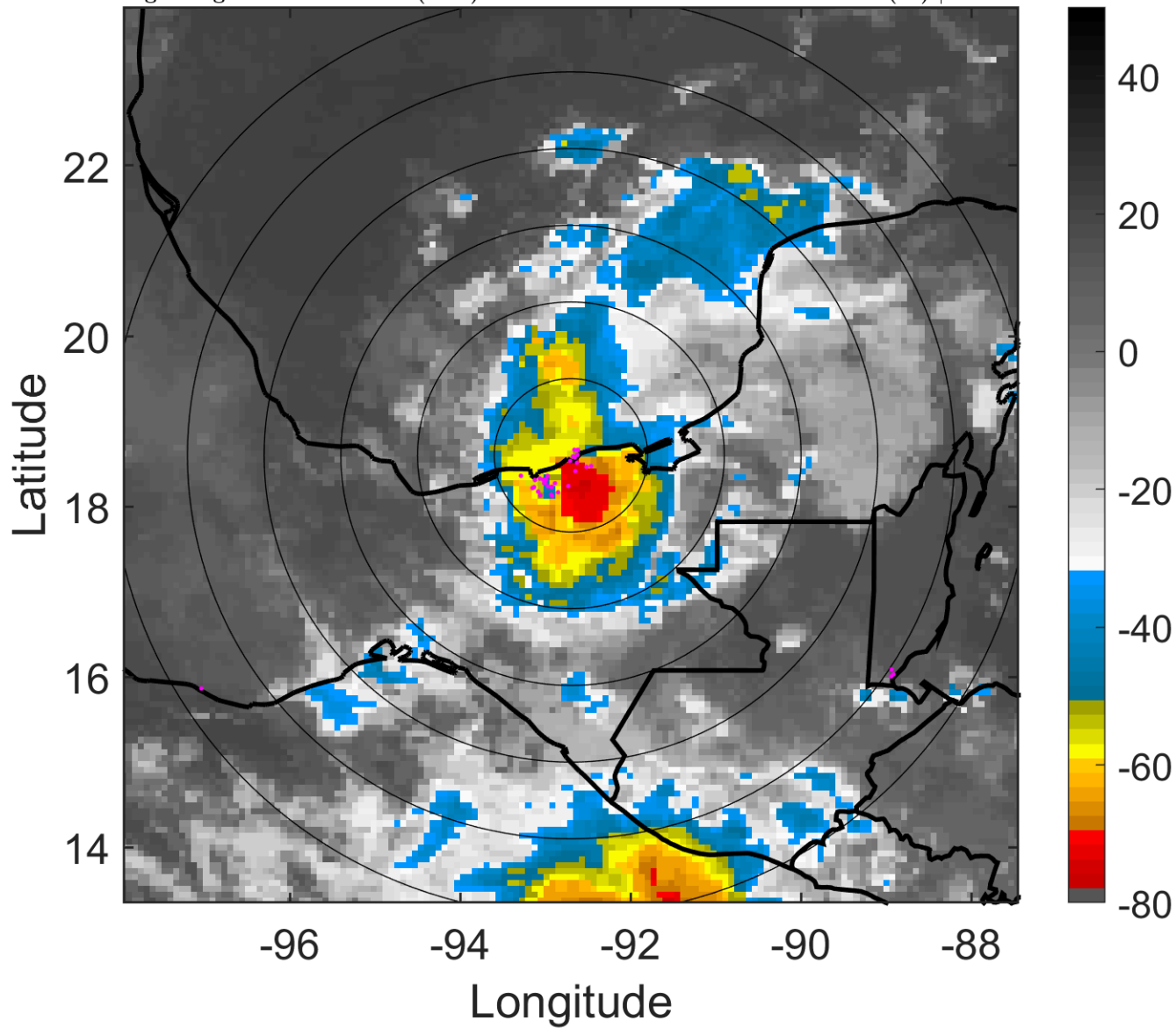
t: 2008100606 (23.8 LT)

Lightning: 23.8 LT \pm 1.5 h (dots)

PT: NP | EA: INACT

13L (MARCO) | 30 kt TD

S: 4.7 m s⁻¹ (M) | H: 64°



6-h IR BT Differences & Lightning

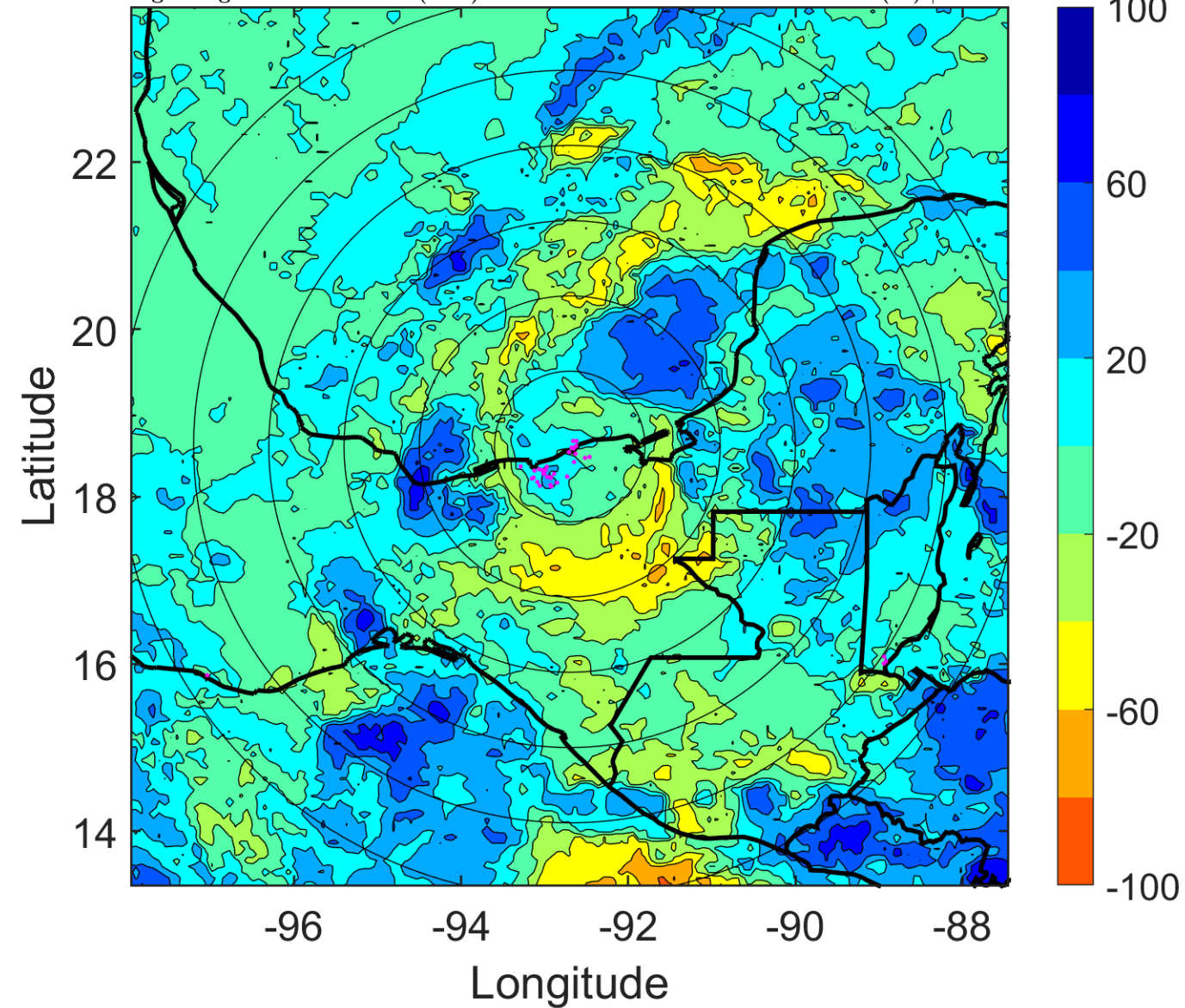
Δ t: 2008100606 (23.8 LT) - 2008100600 (17.9 LT)

Lightning: 23.8 LT \pm 1.5 h (dots)

PT: NP | EA: INACT

13L (MARCO) | 30 kt TD

S: 4.7 m s⁻¹ (M) | H: 64°



IR BT & Lightning

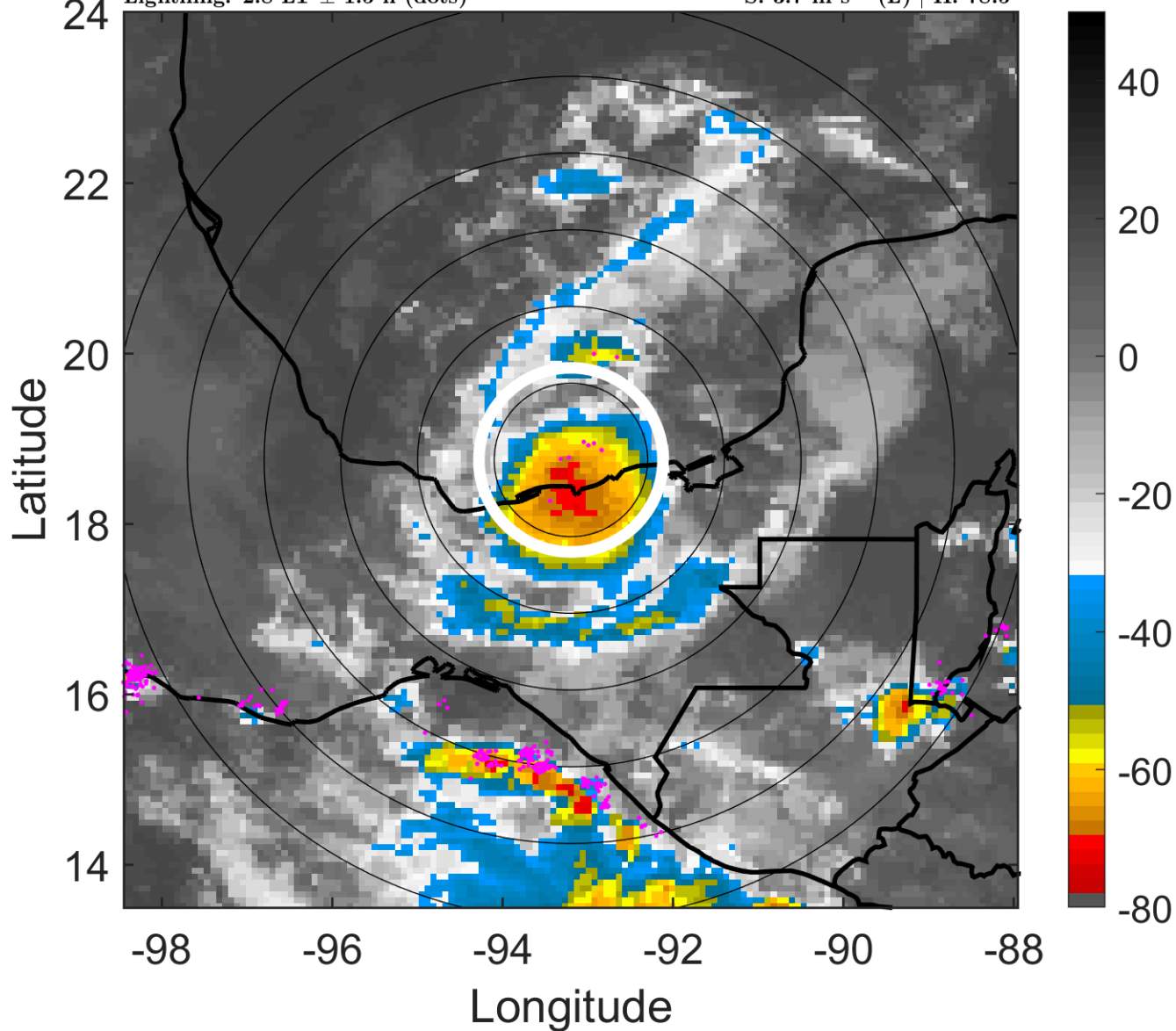
t: 2008100609 (2.8 LT)

Lightning: 2.8 LT \pm 1.5 h (dots)

PT: SLCP | EA: QUASI

13L (MARCO) | 35 kt TS

S: 3.7 m s⁻¹ (L) | H: 78.5°



6-h IR BT Differences & Lightning

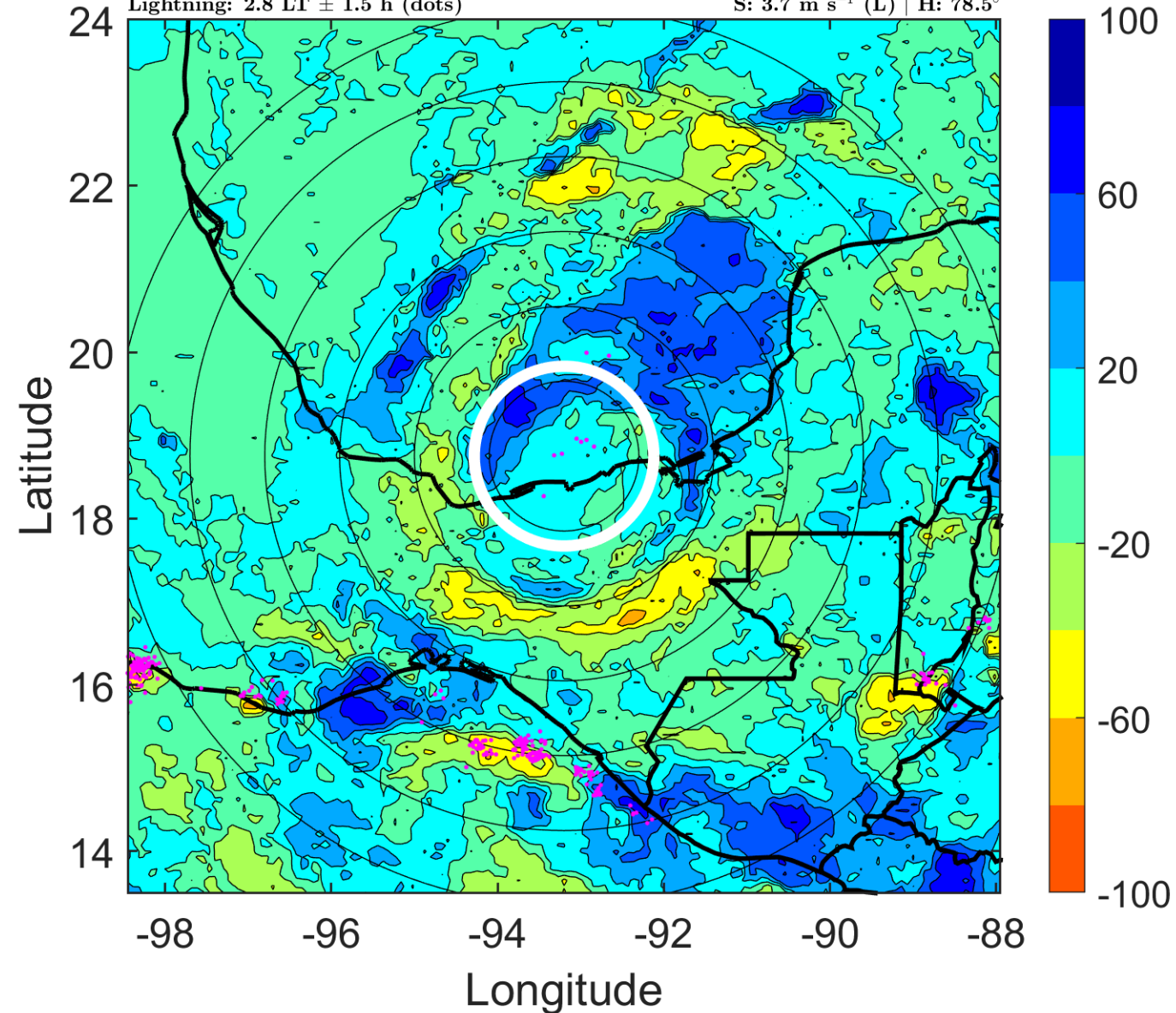
Δ t: 2008100609 (2.8 LT) - 2008100603 (20.9 LT)

Lightning: 2.8 LT \pm 1.5 h (dots)

PT: SLCP | EA: QUASI

13L (MARCO) | 35 kt TS

S: 3.7 m s⁻¹ (L) | H: 78.5°



IR BT & Lightning

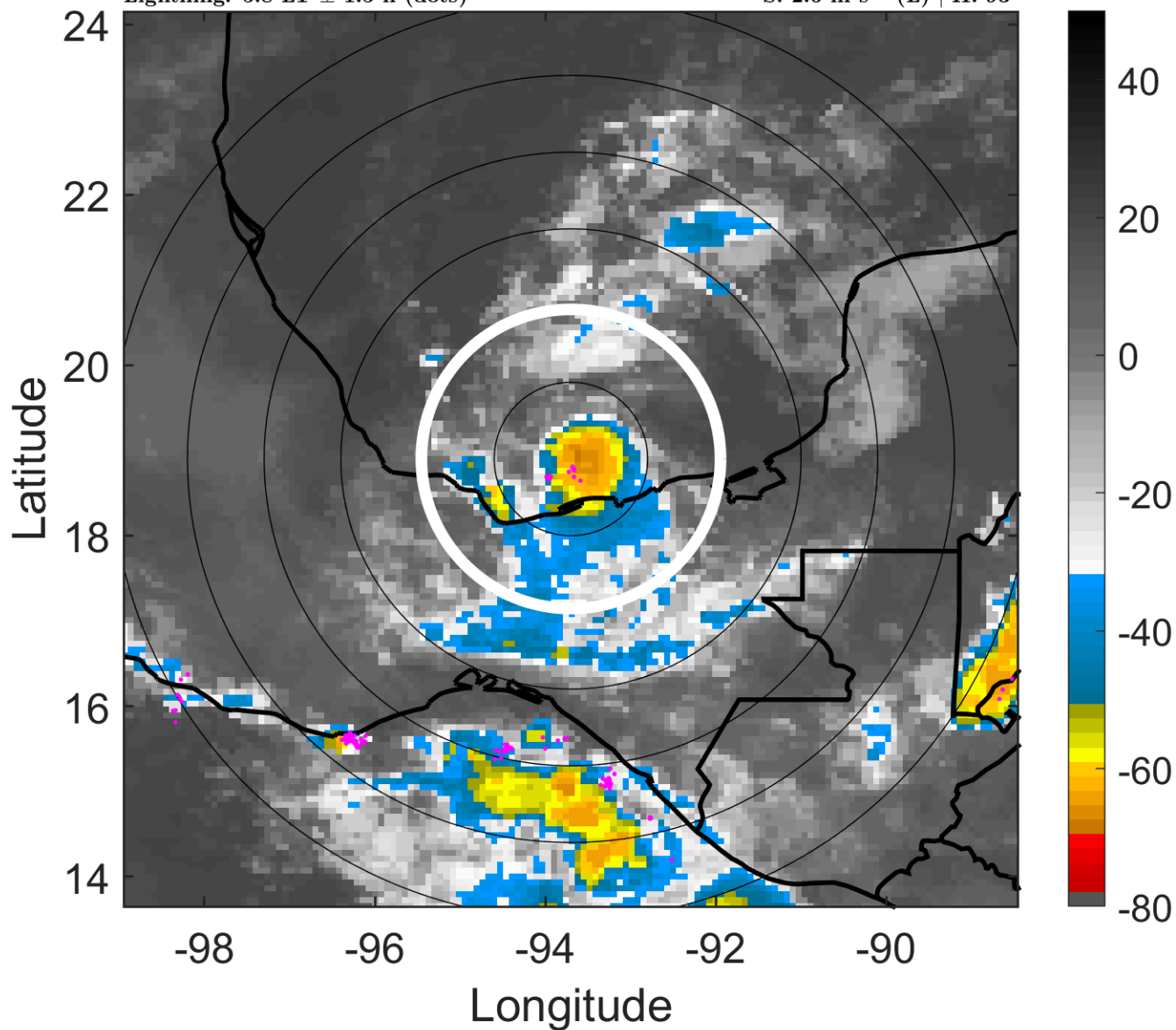
t: 2008100612 (5.8 LT)

Lightning: 5.8 LT \pm 1.5 h (dots)

PT: SLCP | EA: QUASI

13L (MARCO) | 40 kt TS

S: 2.6 m s⁻¹ (L) | H: 93°



6-h IR BT Differences & Lightning

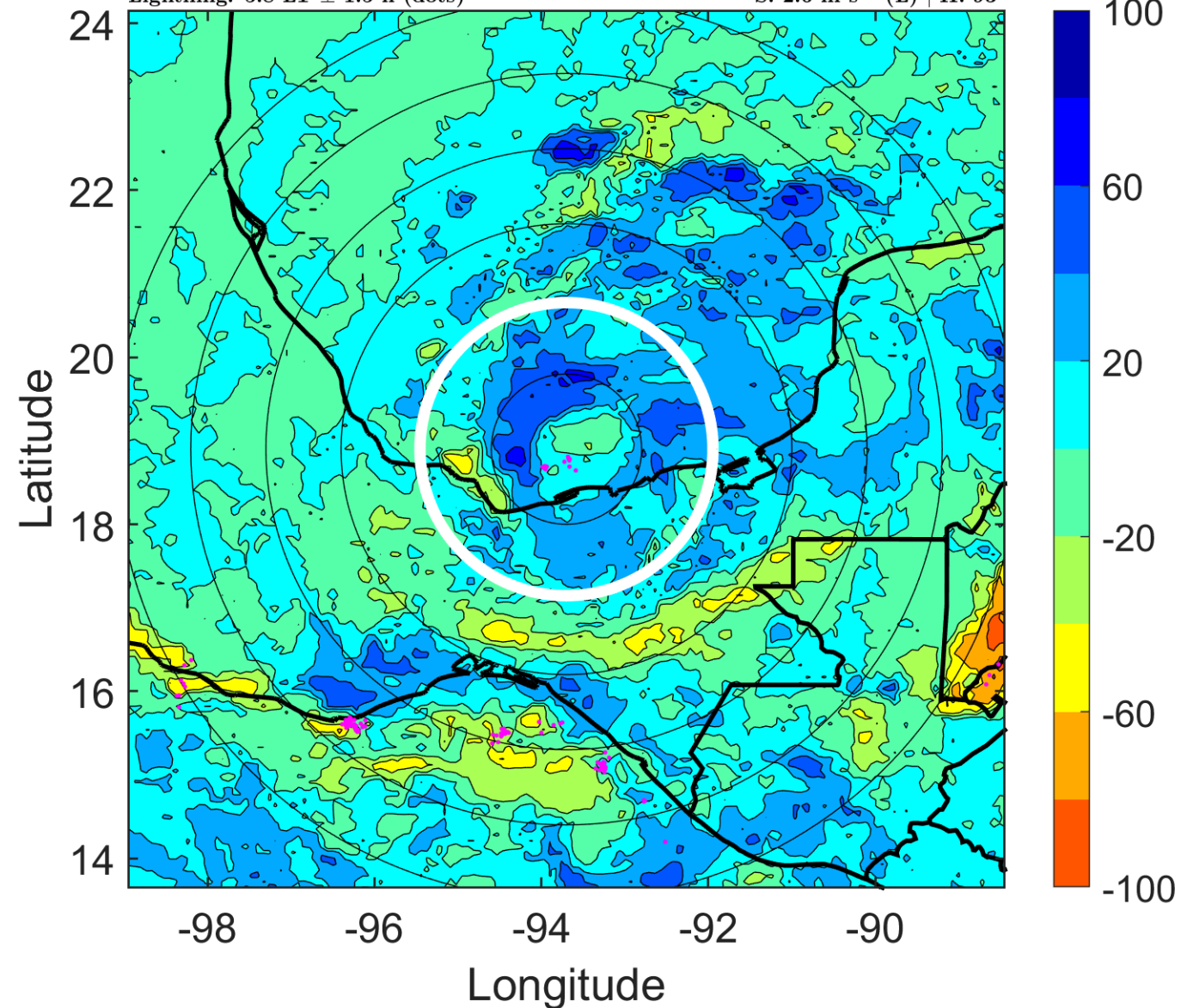
Δ t: 2008100612 (5.8 LT) - 2008100606 (23.8 LT)

Lightning: 5.8 LT \pm 1.5 h (dots)

PT: SLCP | EA: QUASI

13L (MARCO) | 40 kt TS

S: 2.6 m s⁻¹ (L) | H: 93°



IR BT & Lightning

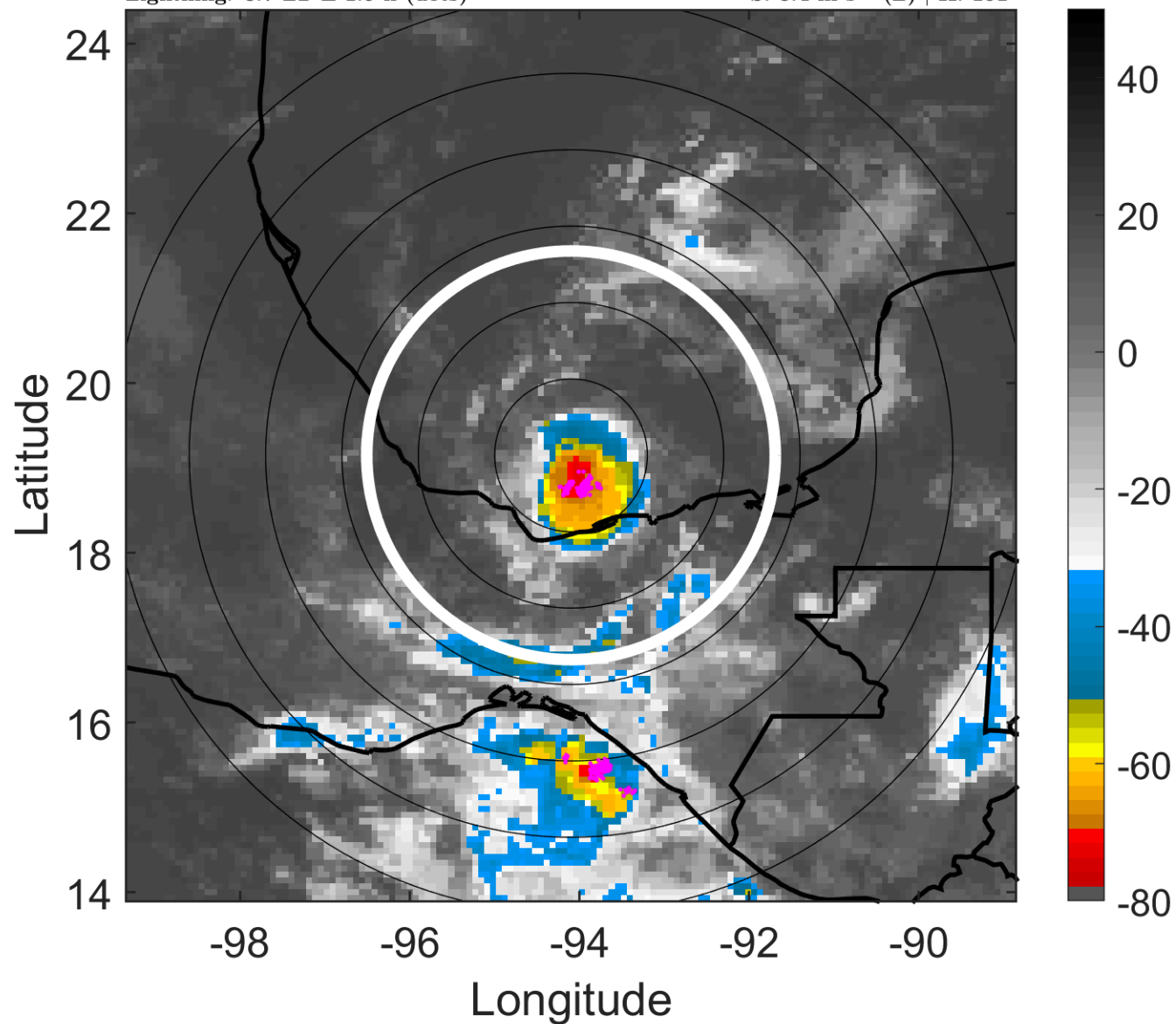
t: 2008100615 (8.7 LT)

Lightning: 8.7 LT \pm 1.5 h (dots)

PT: SLCP | EA: QUASI

13L (MARCO) | 45 kt TS

S: 3.4 m s⁻¹ (L) | H: 101°



6-h IR BT Differences & Lightning

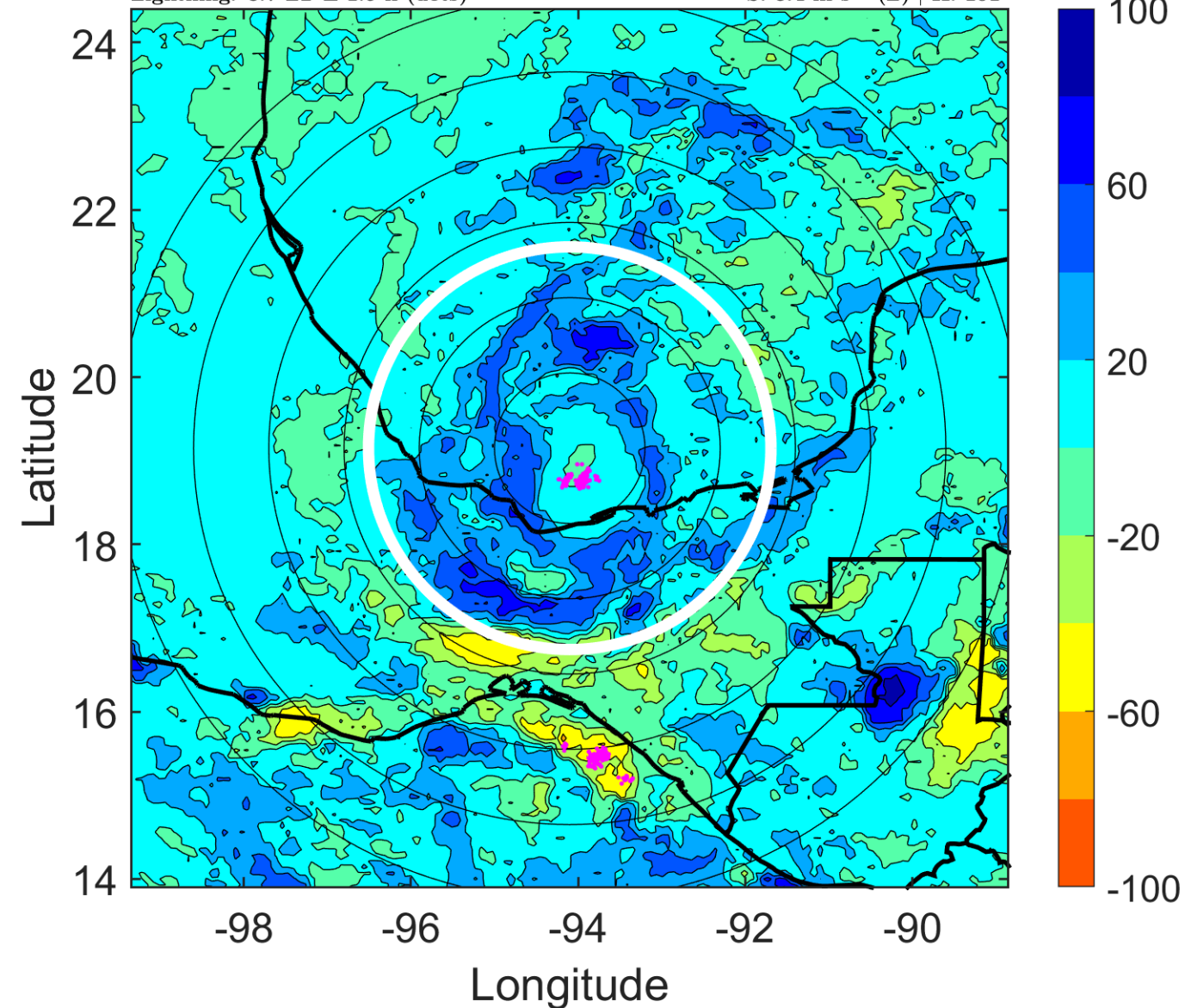
Δ t: 2008100615 (8.7 LT) - 2008100609 (2.8 LT)

Lightning: 8.7 LT \pm 1.5 h (dots)

PT: SLCP | EA: QUASI

13L (MARCO) | 45 kt TS

S: 3.4 m s⁻¹ (L) | H: 101°



IR BT & Lightning

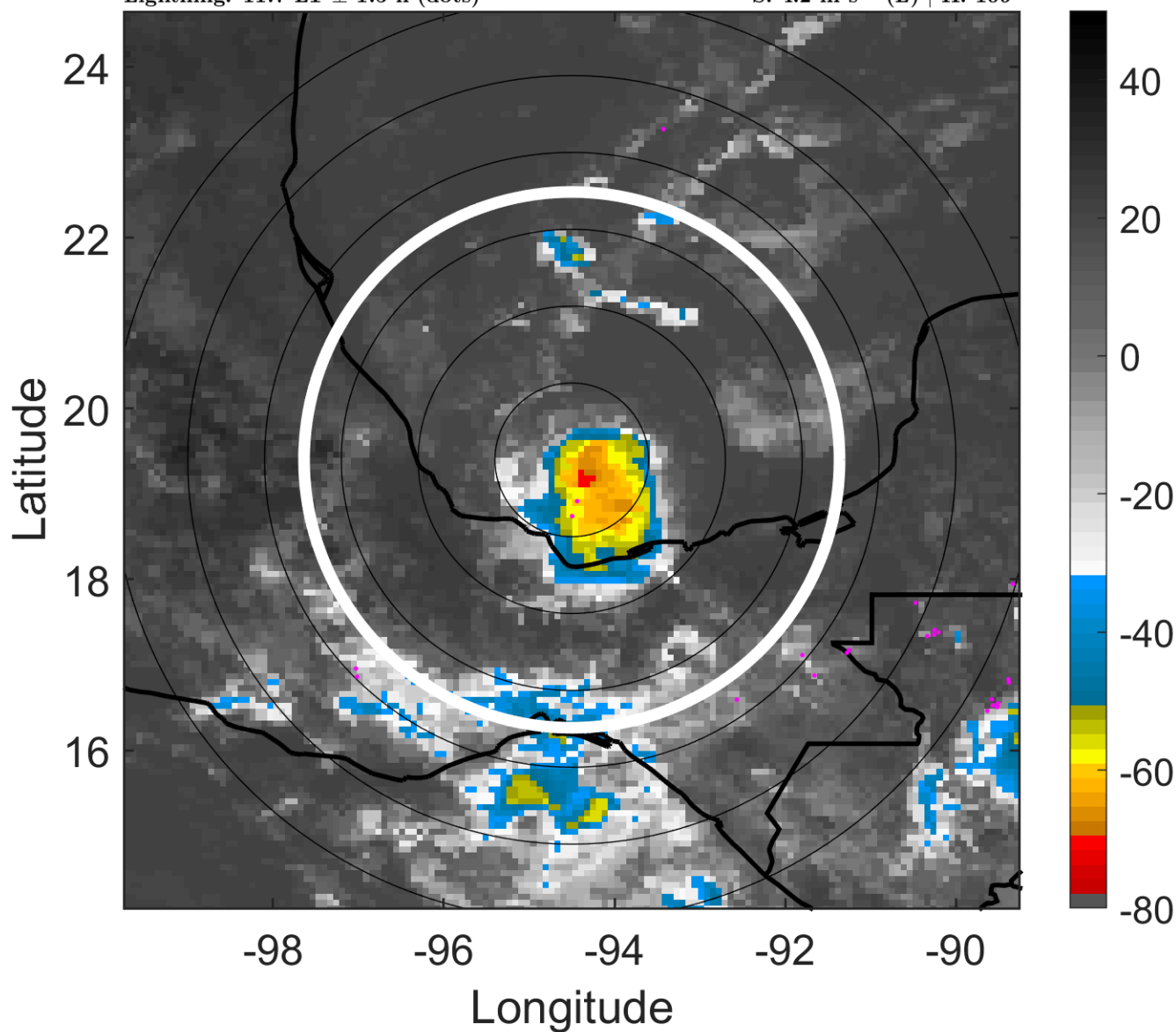
t: 2008100618 (11.7 LT)

Lightning: 11.7 LT \pm 1.5 h (dots)

PT: SLCP | EA: QUASI

13L (MARCO) | 50 kt TS

S: 4.2 m s⁻¹ (L) | H: 109°



6-h IR BT Differences & Lightning

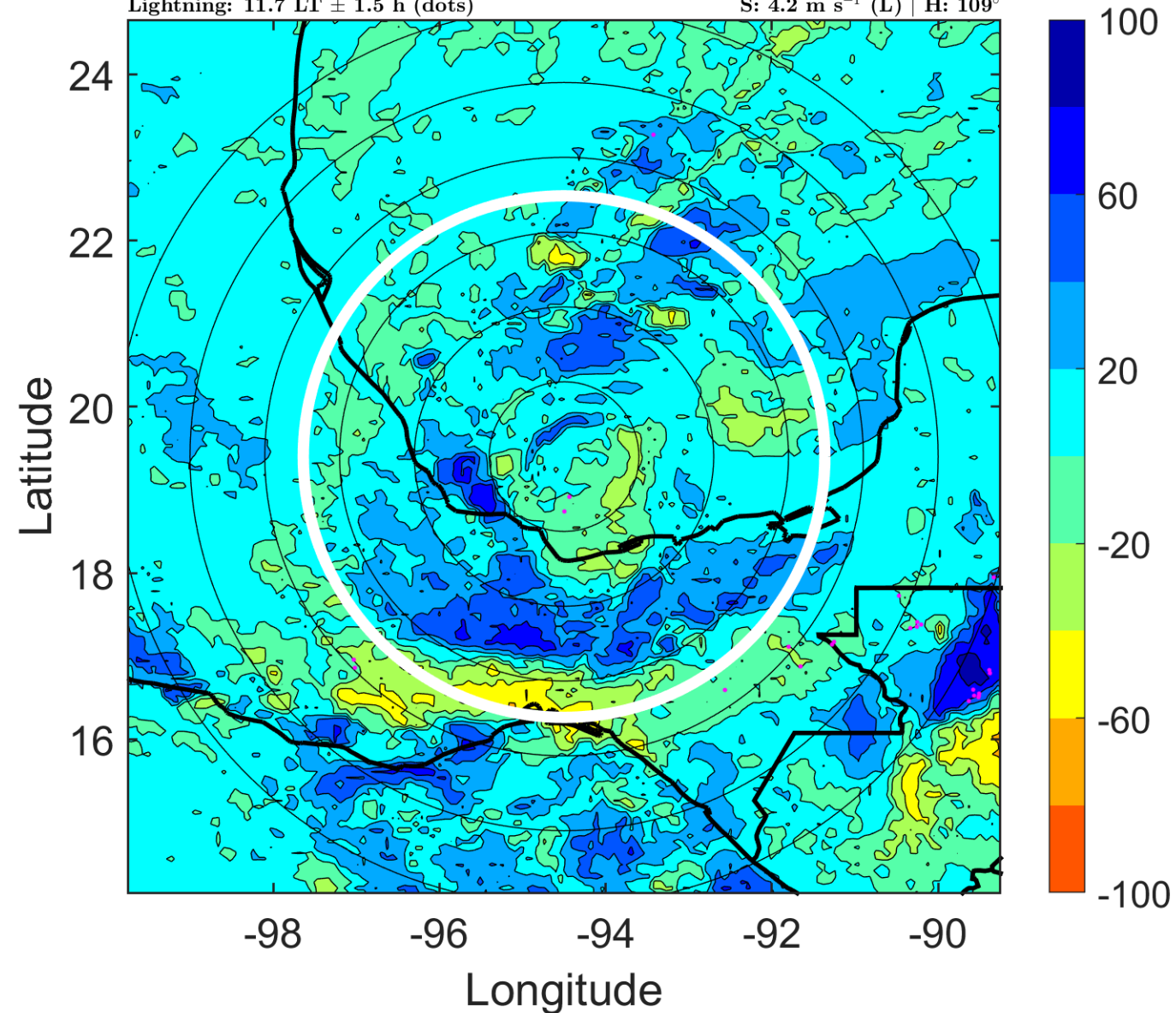
Δ t: 2008100618 (11.7 LT) - 2008100612 (5.8 LT)

Lightning: 11.7 LT \pm 1.5 h (dots)

PT: SLCP | EA: QUASI

13L (MARCO) | 50 kt TS

S: 4.2 m s⁻¹ (L) | H: 109°



IR BT & Lightning

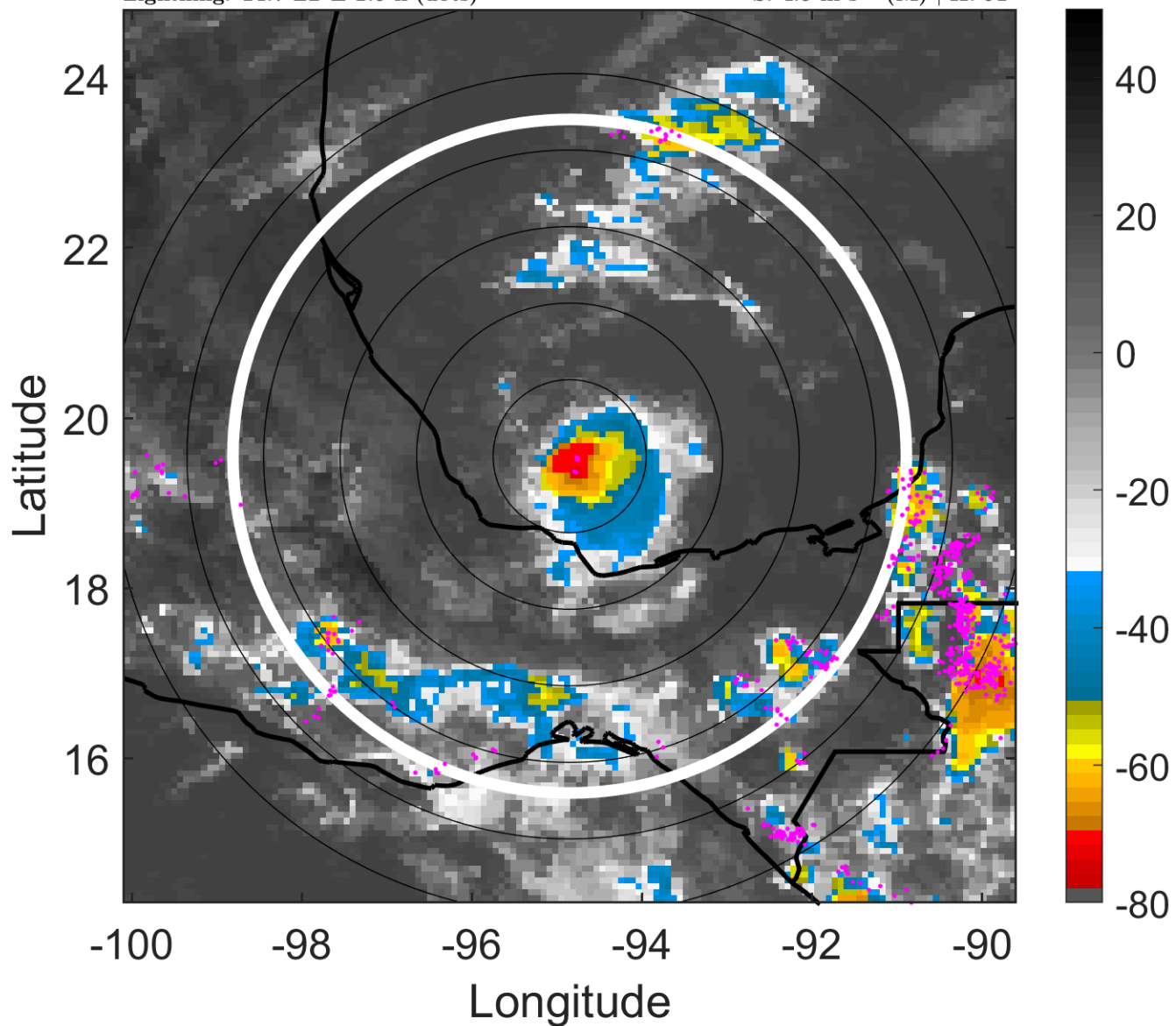
t: 2008100621 (14.7 LT)

Lightning: 14.7 LT \pm 1.5 h (dots)

PT: SLCP | EA: QUASI

13L (MARCO) | 52.5 kt TS

S: 4.5 m s⁻¹ (M) | H: 91°



6-h IR BT Differences & Lightning

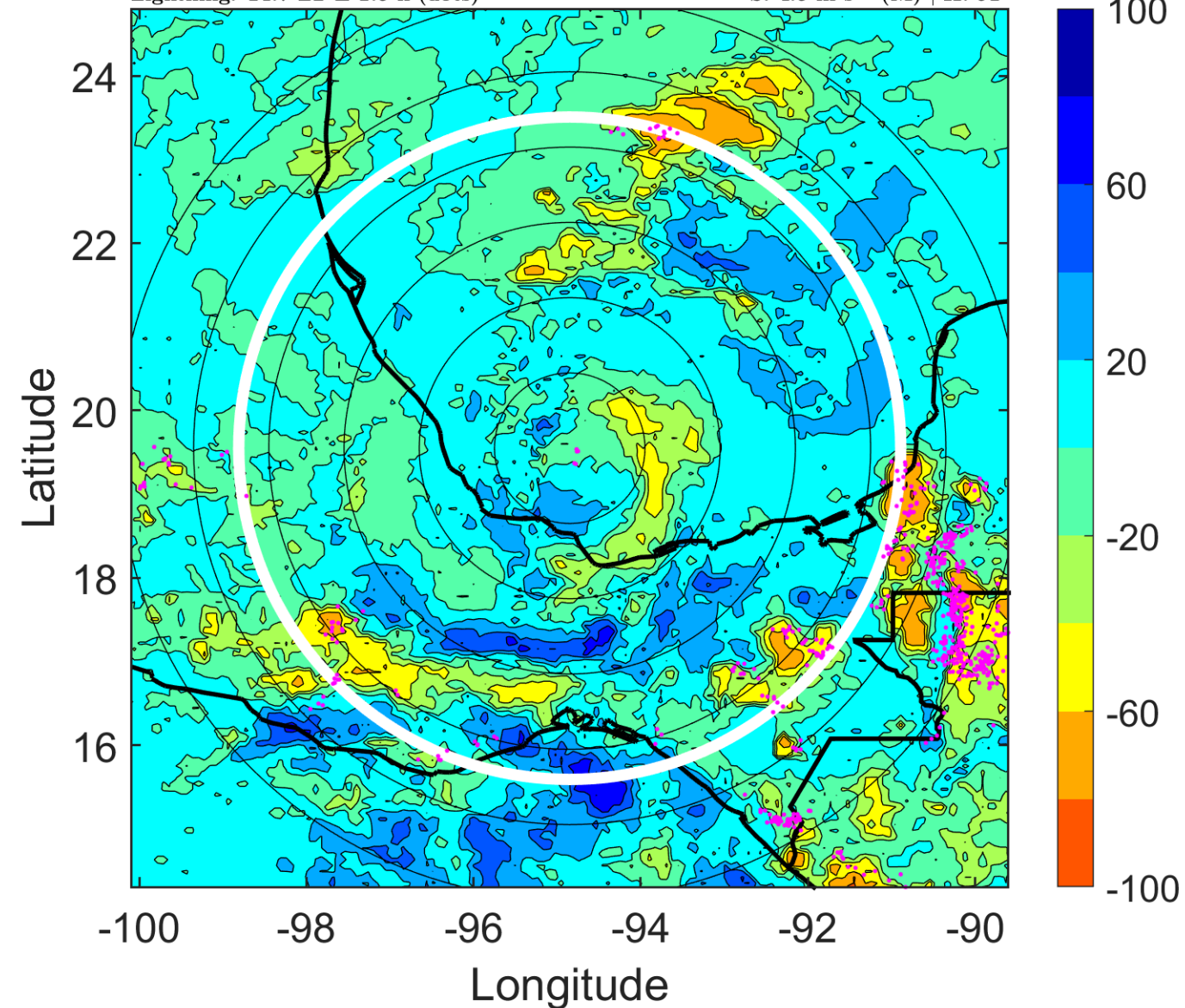
Δ t: 2008100621 (14.7 LT) - 2008100615 (8.7 LT)

Lightning: 14.7 LT \pm 1.5 h (dots)

PT: SLCP | EA: QUASI

13L (MARCO) | 52.5 kt TS

S: 4.5 m s⁻¹ (M) | H: 91°



IR BT & Lightning

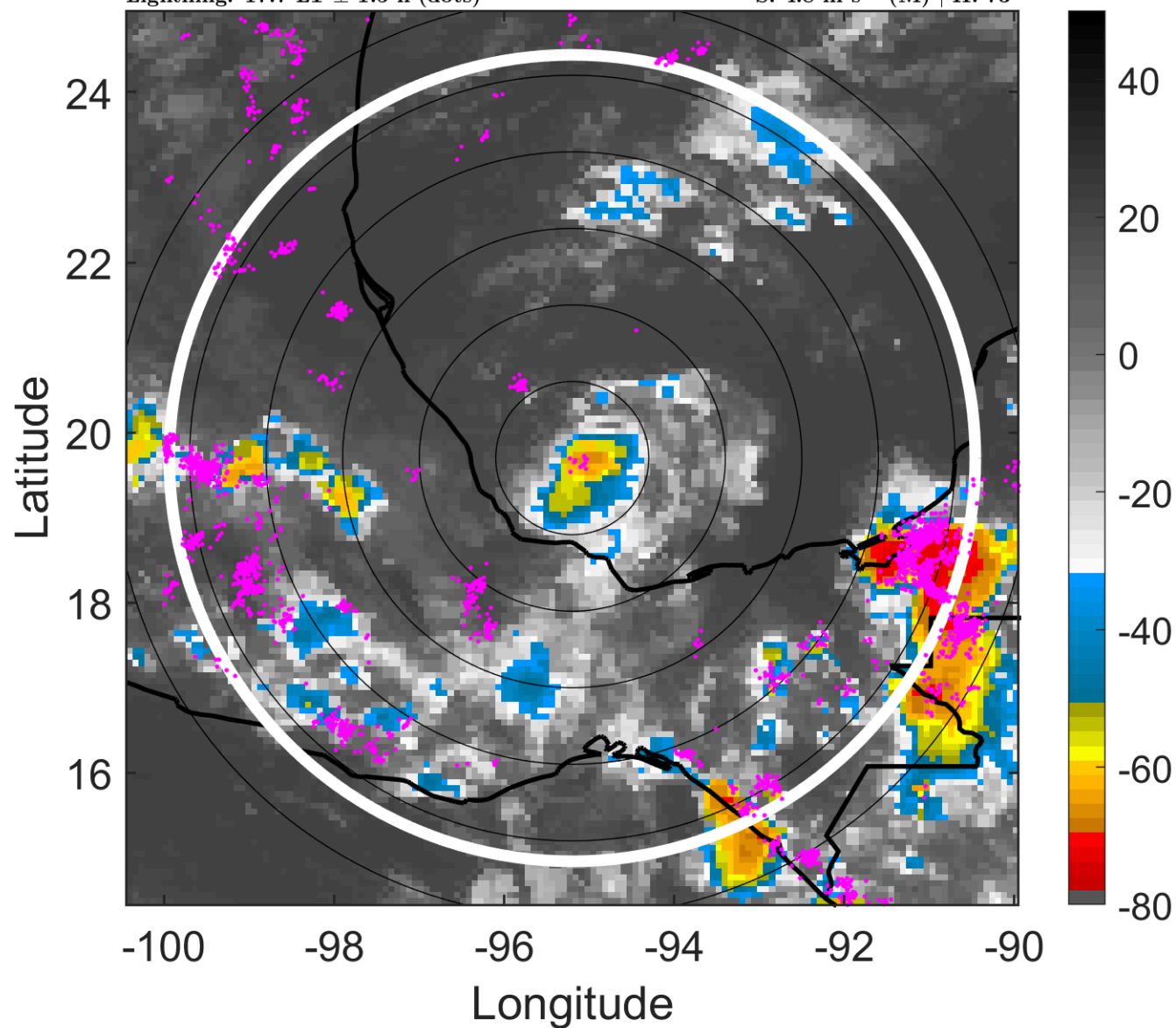
t: 2008100700 (17.7 LT)

Lightning: 17.7 LT \pm 1.5 h (dots)

PT: SLCP | EA: QUASI

13L (MARCO) | 55 kt TS

S: 4.8 m s⁻¹ (M) | H: 73°



6-h IR BT Differences & Lightning

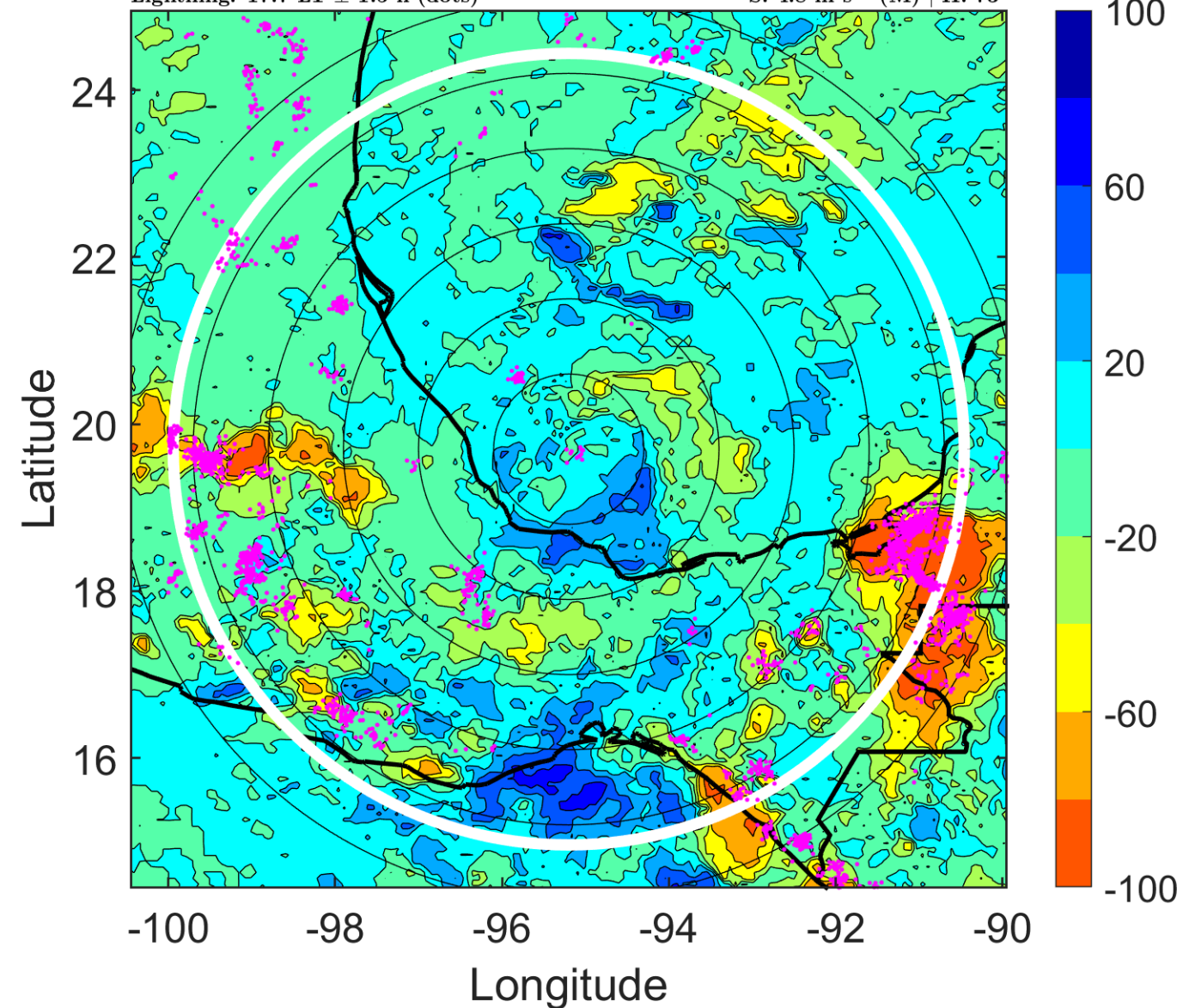
Δ t: 2008100700 (17.7 LT) - 2008100618 (11.7 LT)

Lightning: 17.7 LT \pm 1.5 h (dots)

PT: SLCP | EA: QUASI

13L (MARCO) | 55 kt TS

S: 4.8 m s⁻¹ (M) | H: 73°



IR BT & Lightning

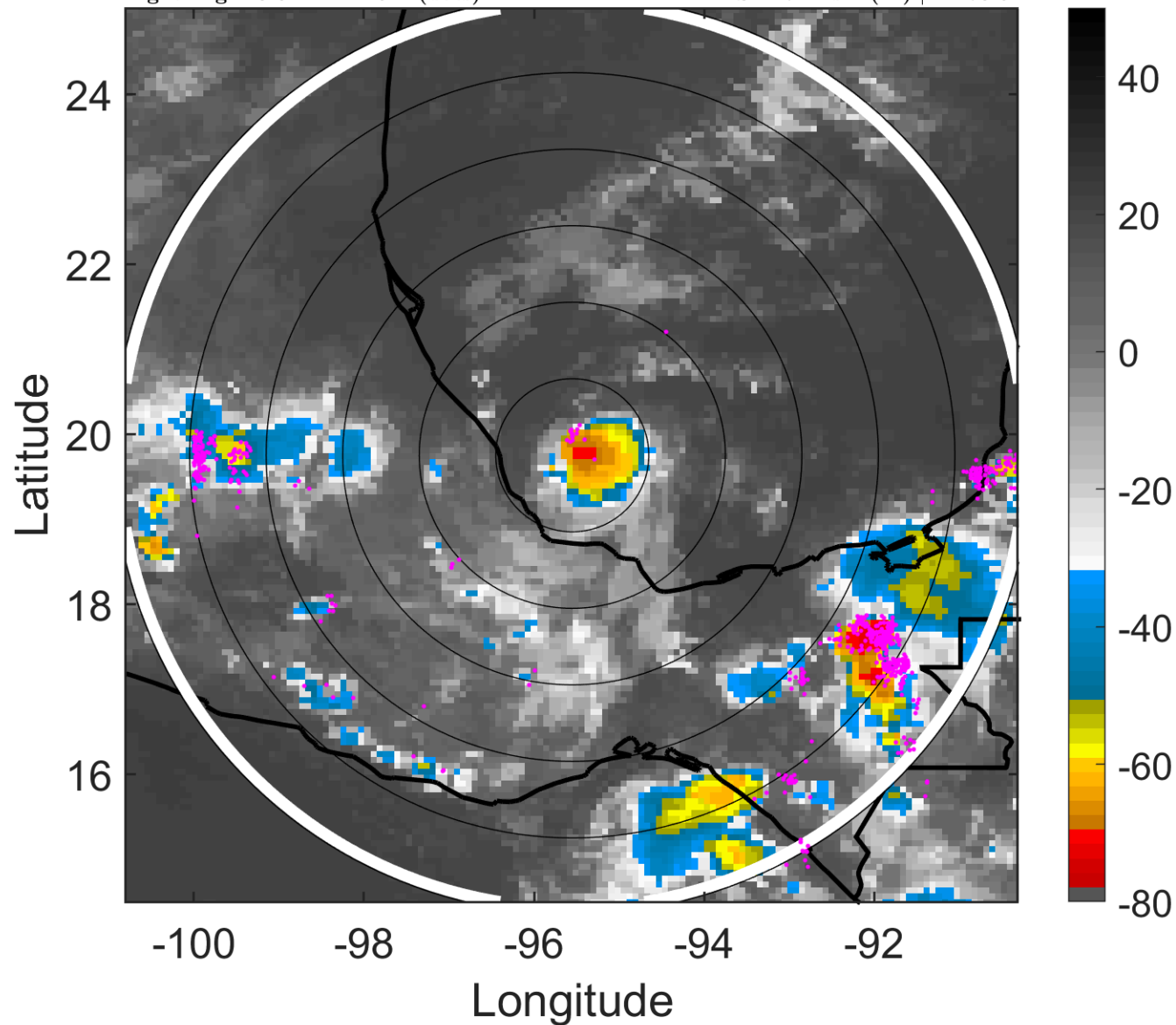
t: 2008100703 (20.6 LT)

Lightning: 20.6 LT \pm 1.5 h (dots)

PT: SLCP | EA: QUASI

13L (MARCO) | 55 kt TS

S: 4.7 m s⁻¹ (M) | H: 73.5°



6-h IR BT Differences & Lightning

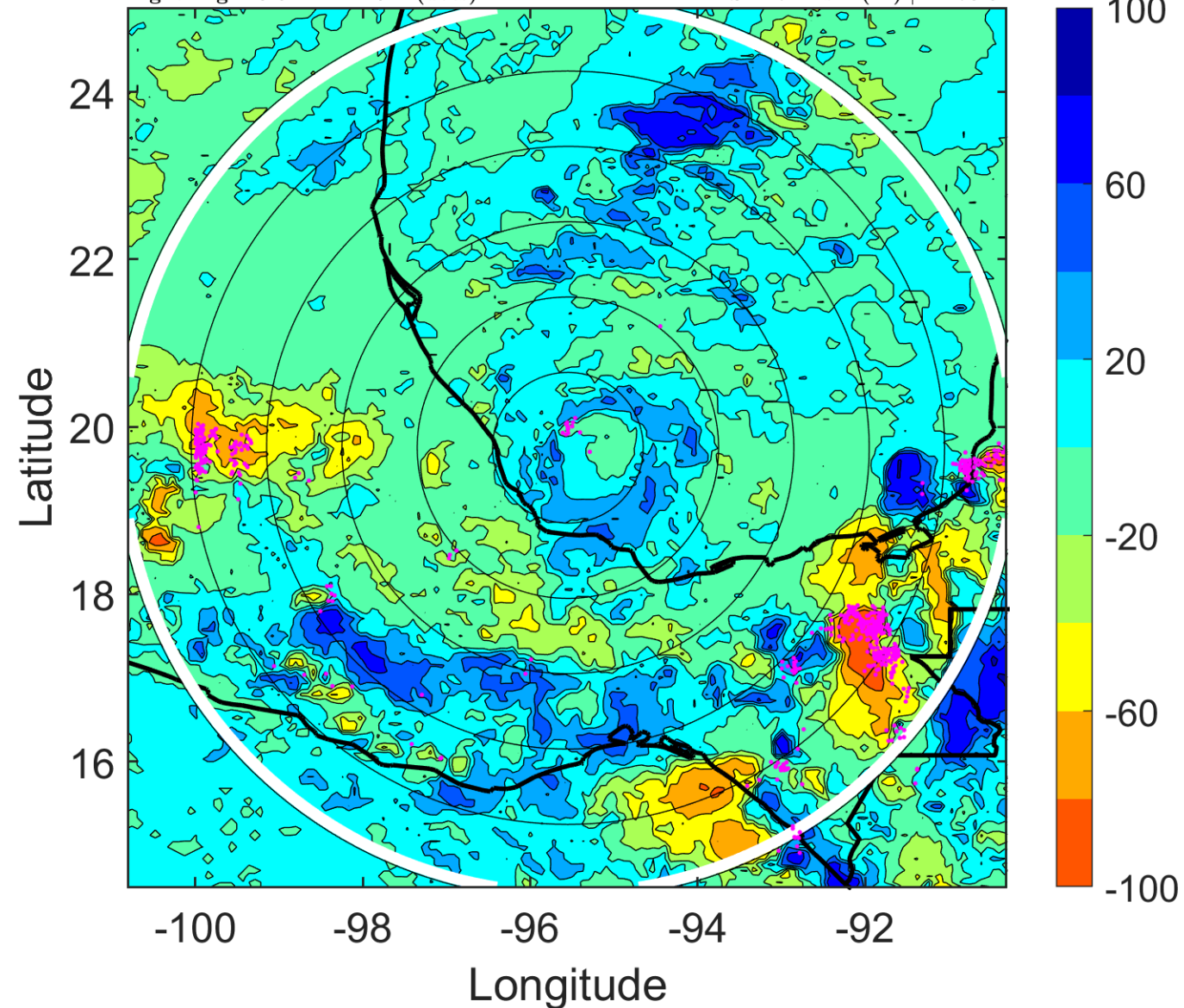
Δ t: 2008100703 (20.6 LT) - 2008100621 (14.7 LT)

Lightning: 20.6 LT \pm 1.5 h (dots)

PT: SLCP | EA: QUASI

13L (MARCO) | 55 kt TS

S: 4.7 m s⁻¹ (M) | H: 73.5°



IR BT & Lightning

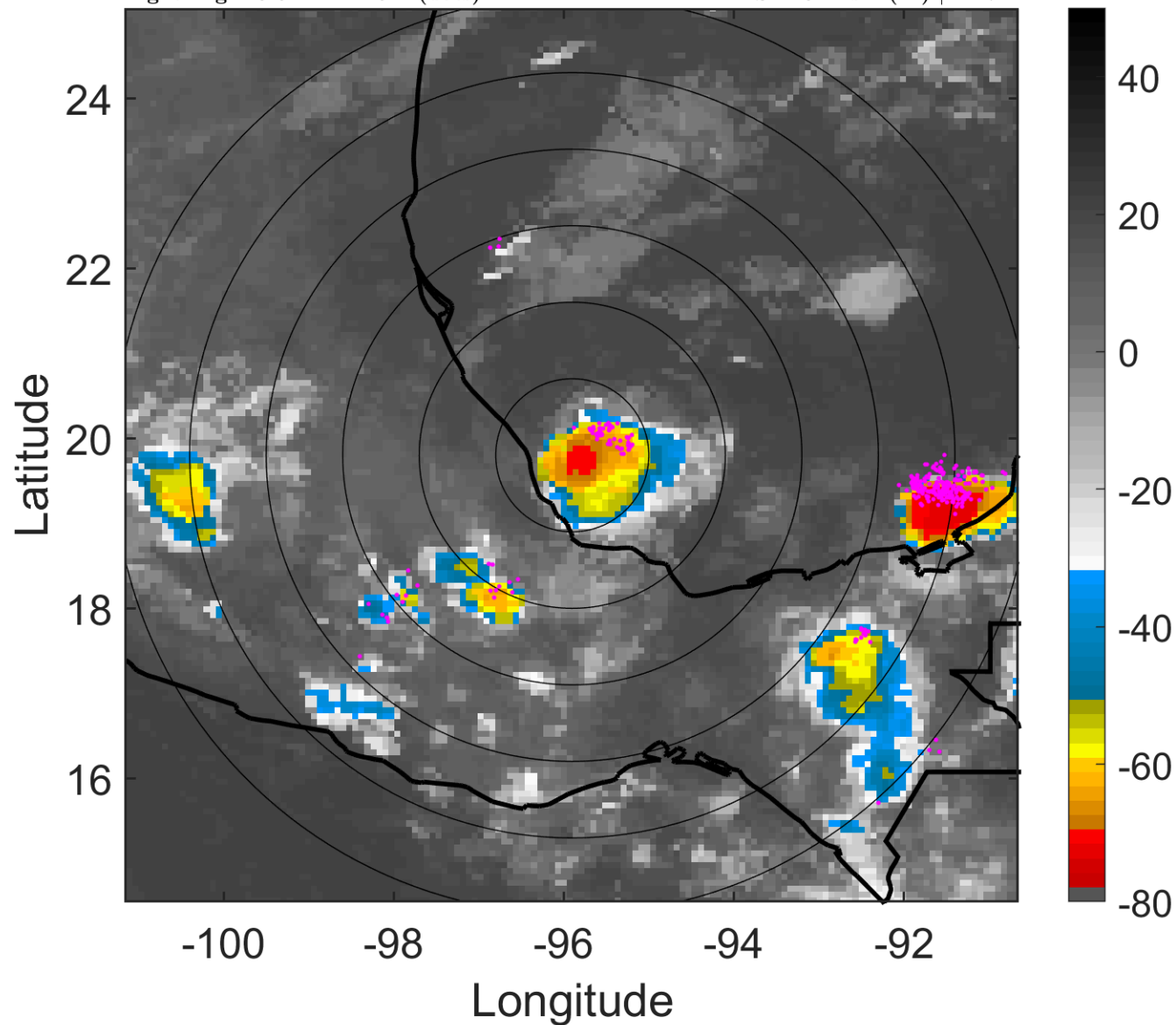
t: 2008100706 (23.6 LT)

Lightning: 23.6 LT \pm 1.5 h (dots)

PT: SLCP | EA: QUASI

13L (MARCO) | 55 kt TS

S: 4.6 m s⁻¹ (M) | H: 74°



6-h IR BT Differences & Lightning

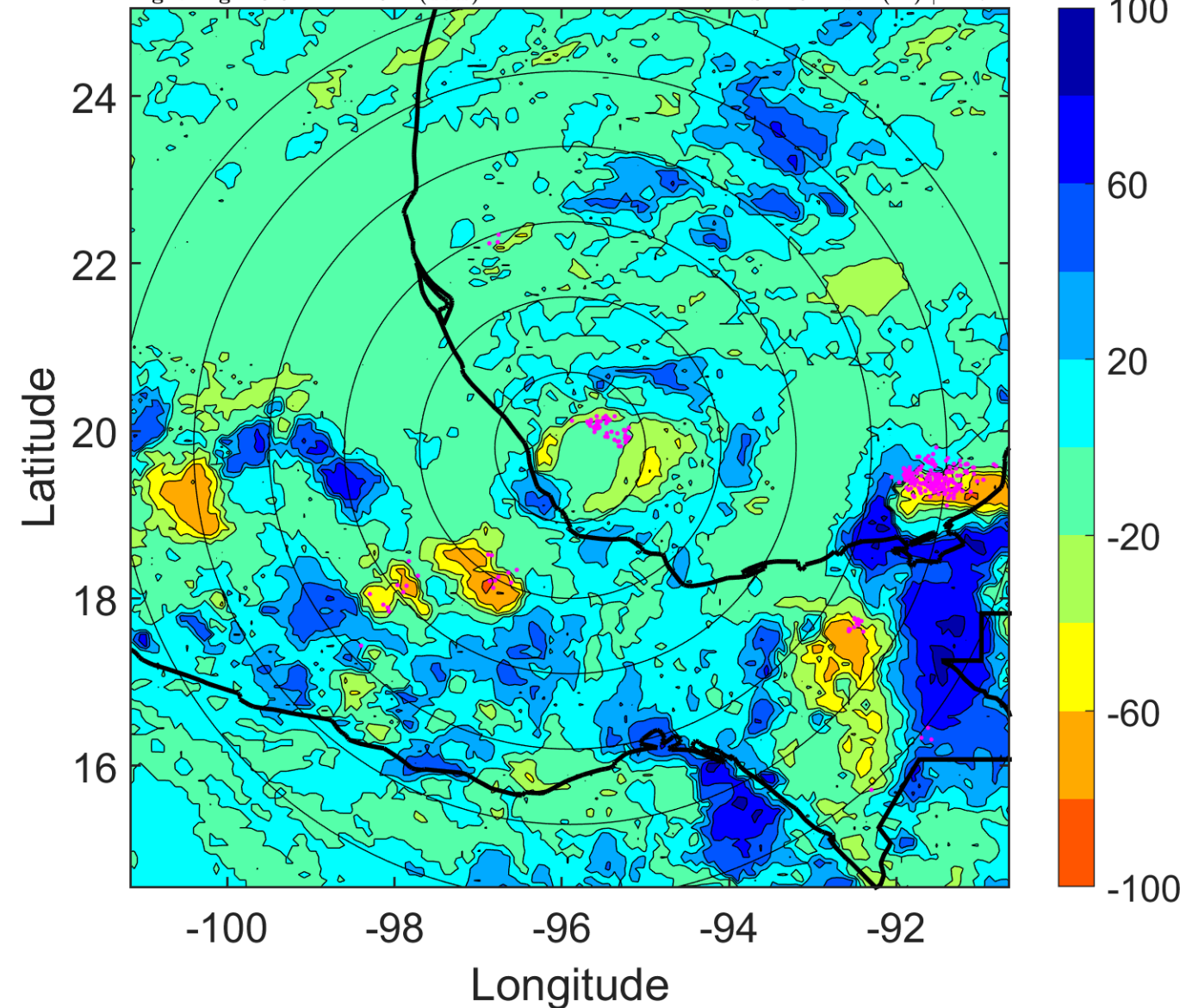
Δ t: 2008100706 (23.6 LT) - 2008100700 (17.7 LT)

Lightning: 23.6 LT \pm 1.5 h (dots)

PT: SLCP | EA: QUASI

13L (MARCO) | 55 kt TS

S: 4.6 m s⁻¹ (M) | H: 74°



IR BT & Lightning

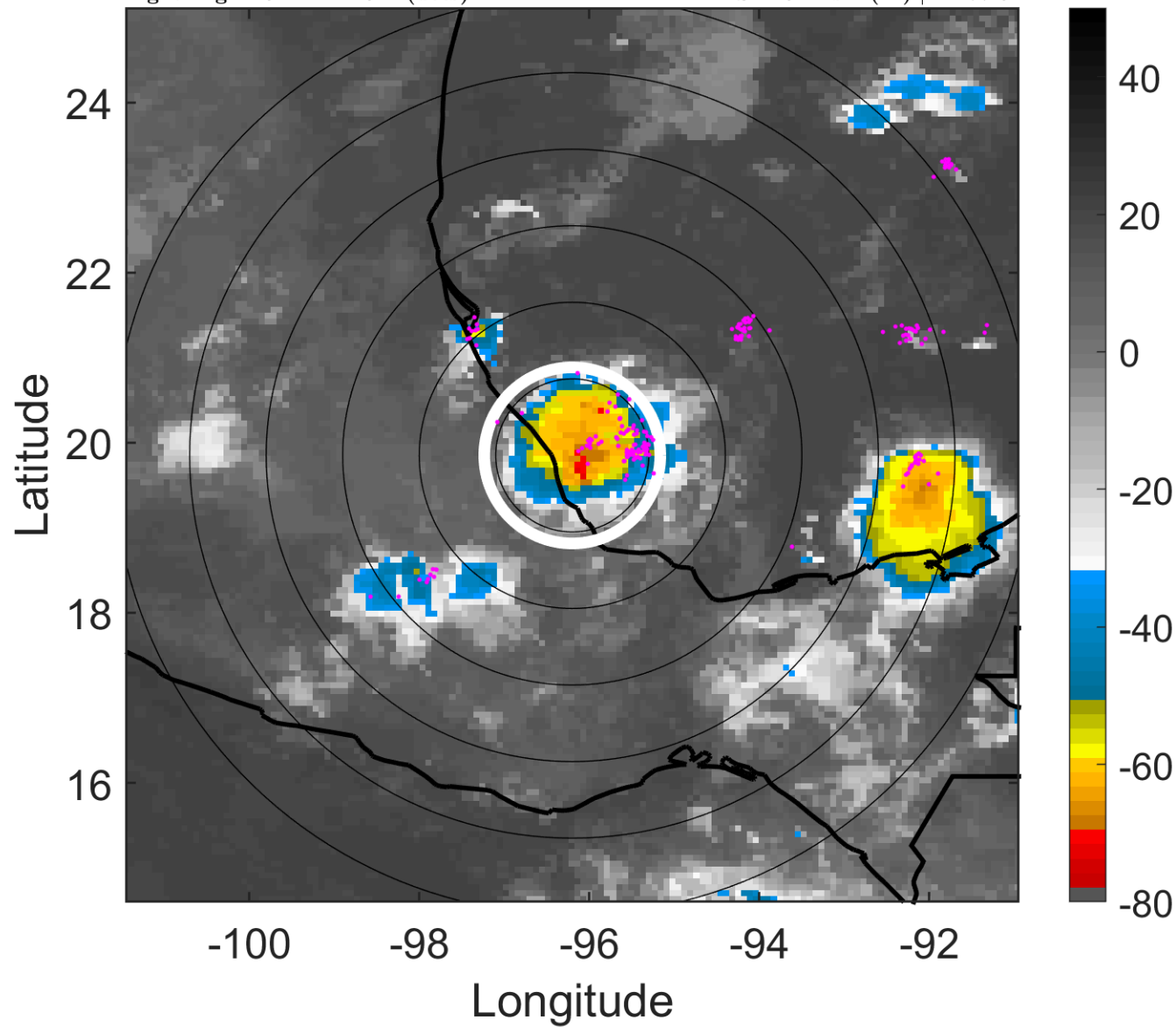
t: 2008100709 (2.6 LT)

Lightning: 2.6 LT \pm 1.5 h (dots)

PT: SLCP | EA: QUASI

13L (MARCO) | 55 kt TS

S: 4.9 m s⁻¹ (M) | H: 77.5°



6-h IR BT Differences & Lightning

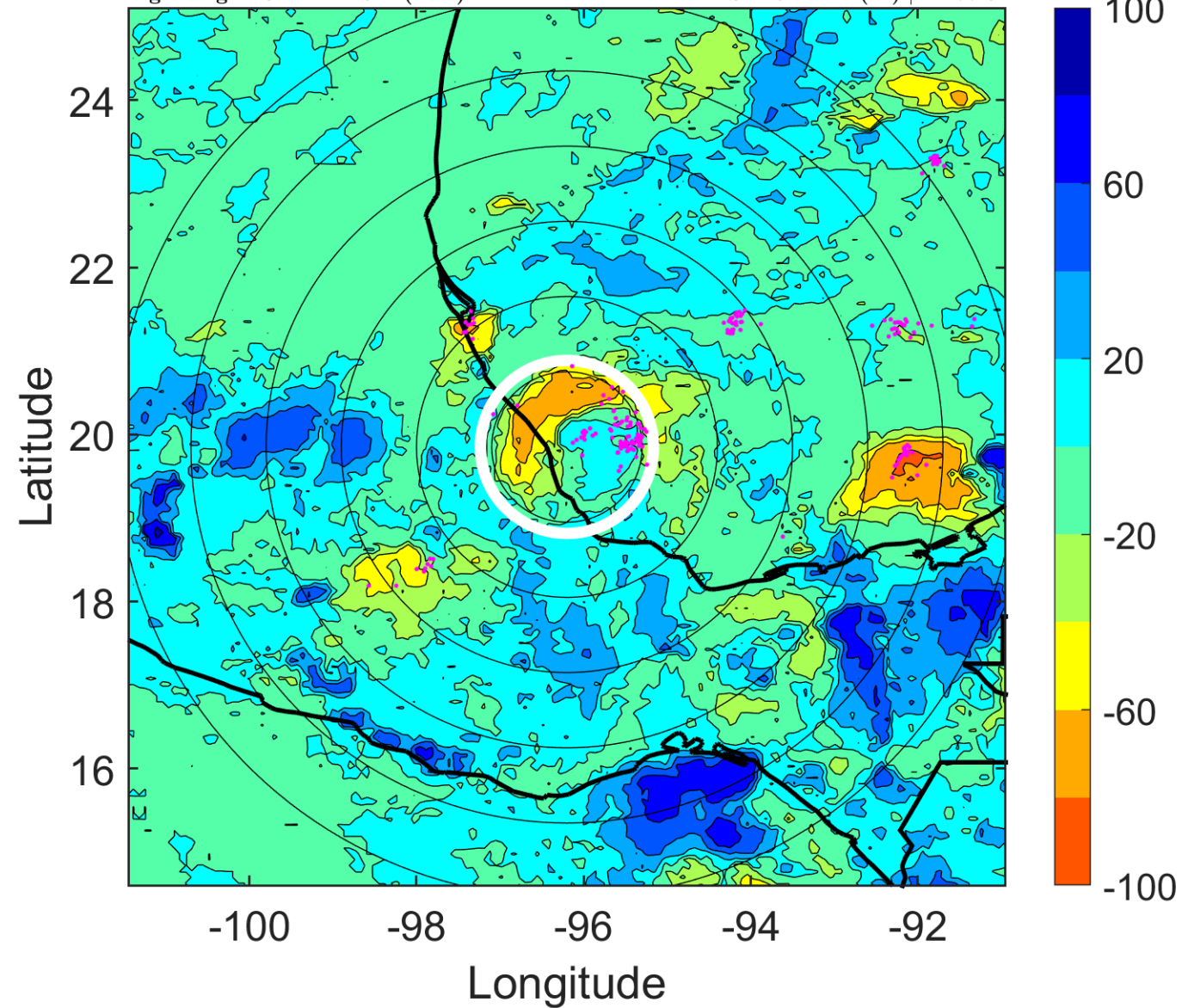
Δ t: 2008100709 (2.6 LT) - 2008100703 (20.6 LT)

Lightning: 2.6 LT \pm 1.5 h (dots)

PT: SLCP | EA: QUASI

13L (MARCO) | 55 kt TS

S: 4.9 m s⁻¹ (M) | H: 77.5°



IR BT & Lightning

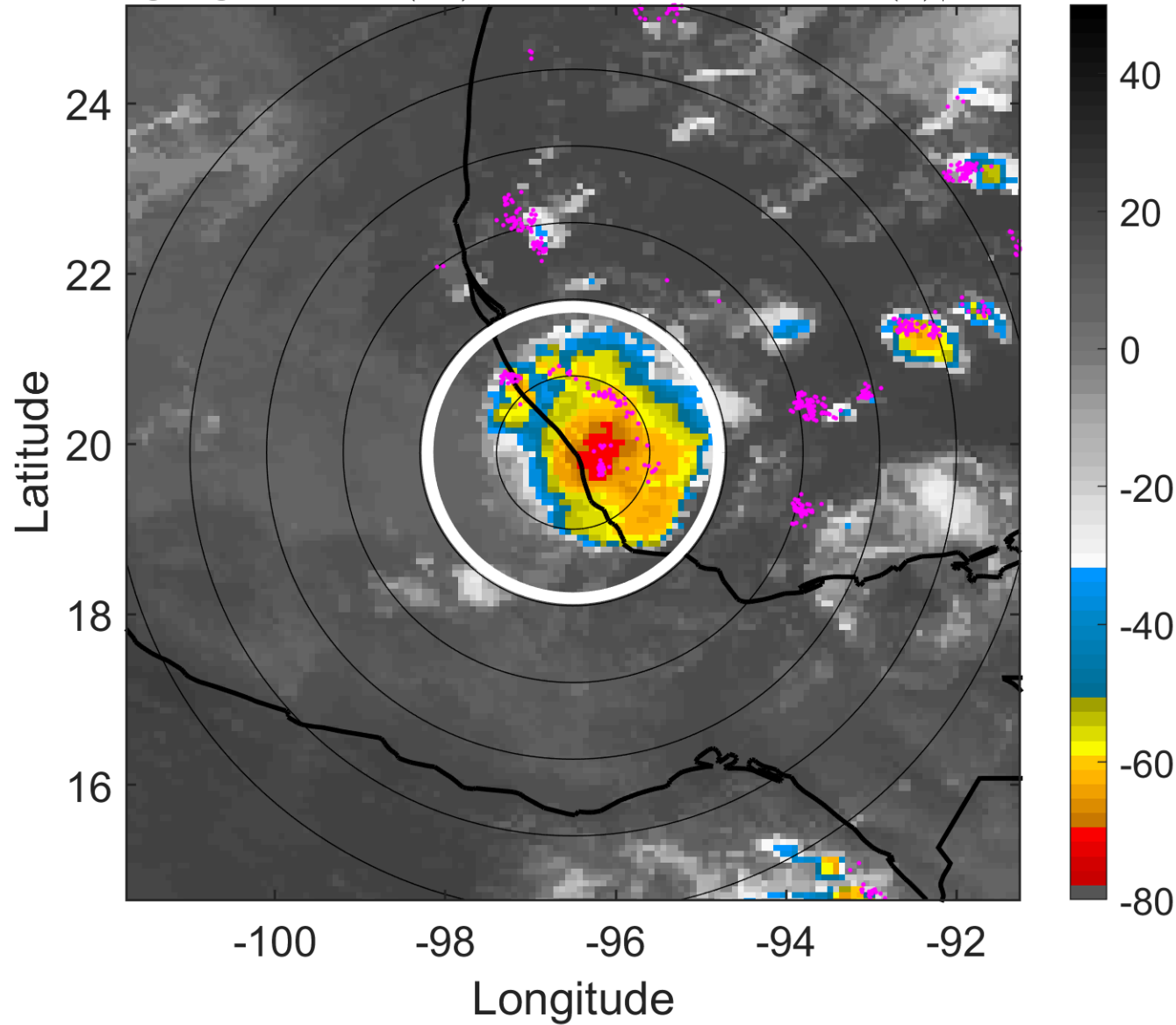
t: 2008100712 (5.6 LT)

Lightning: 5.6 LT \pm 1.5 h (dots)

PT: SLCP | EA: QUASI

13L (MARCO) | 55 kt TS

S: 5.3 m s⁻¹ (M) | H: 81°



6-h IR BT Differences & Lightning

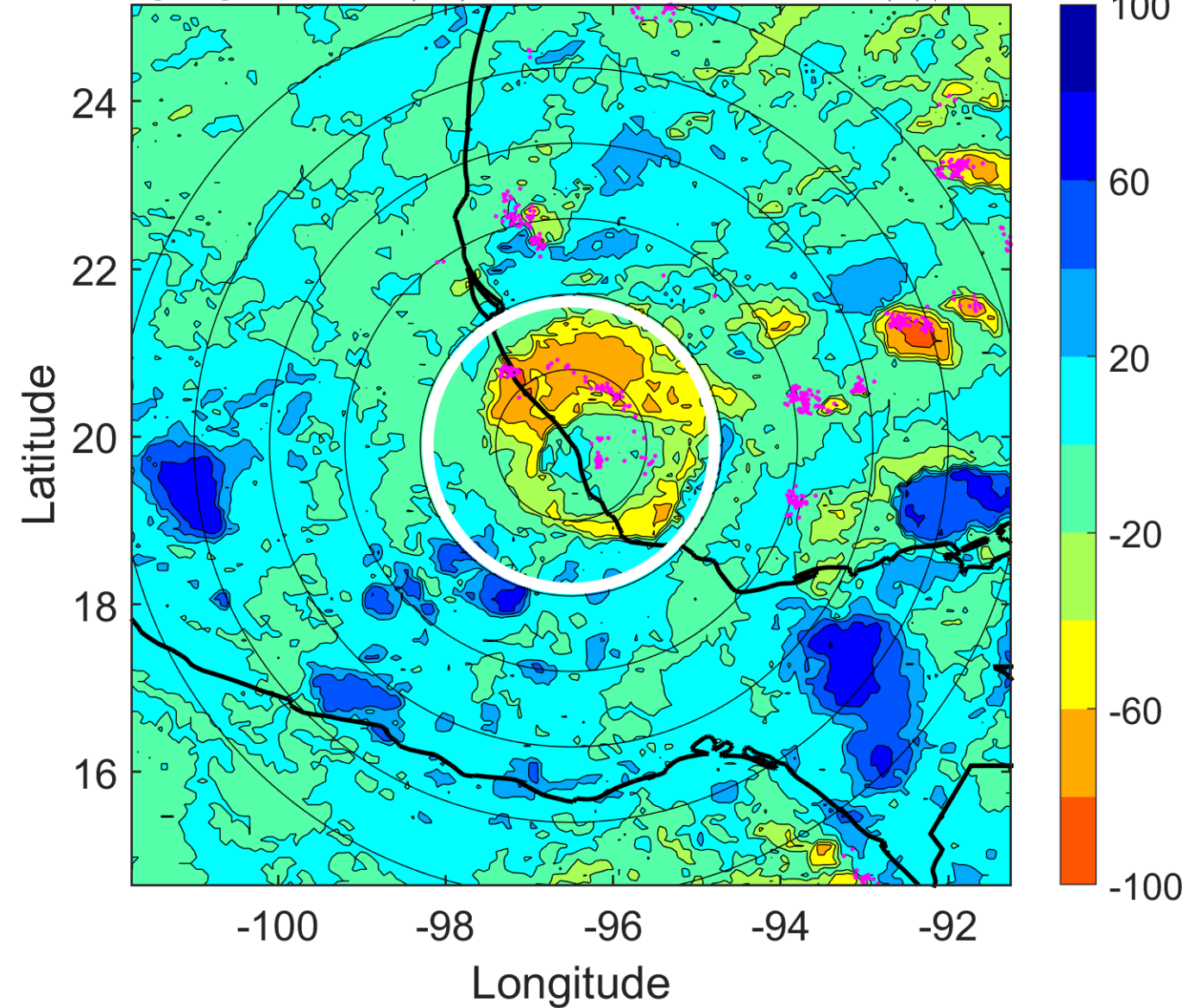
Δ t: 2008100712 (5.6 LT) - 2008100706 (23.6 LT)

Lightning: 5.6 LT \pm 1.5 h (dots)

PT: SLCP | EA: QUASI

13L (MARCO) | 55 kt TS

S: 5.3 m s⁻¹ (M) | H: 81°



IR BT & Lightning

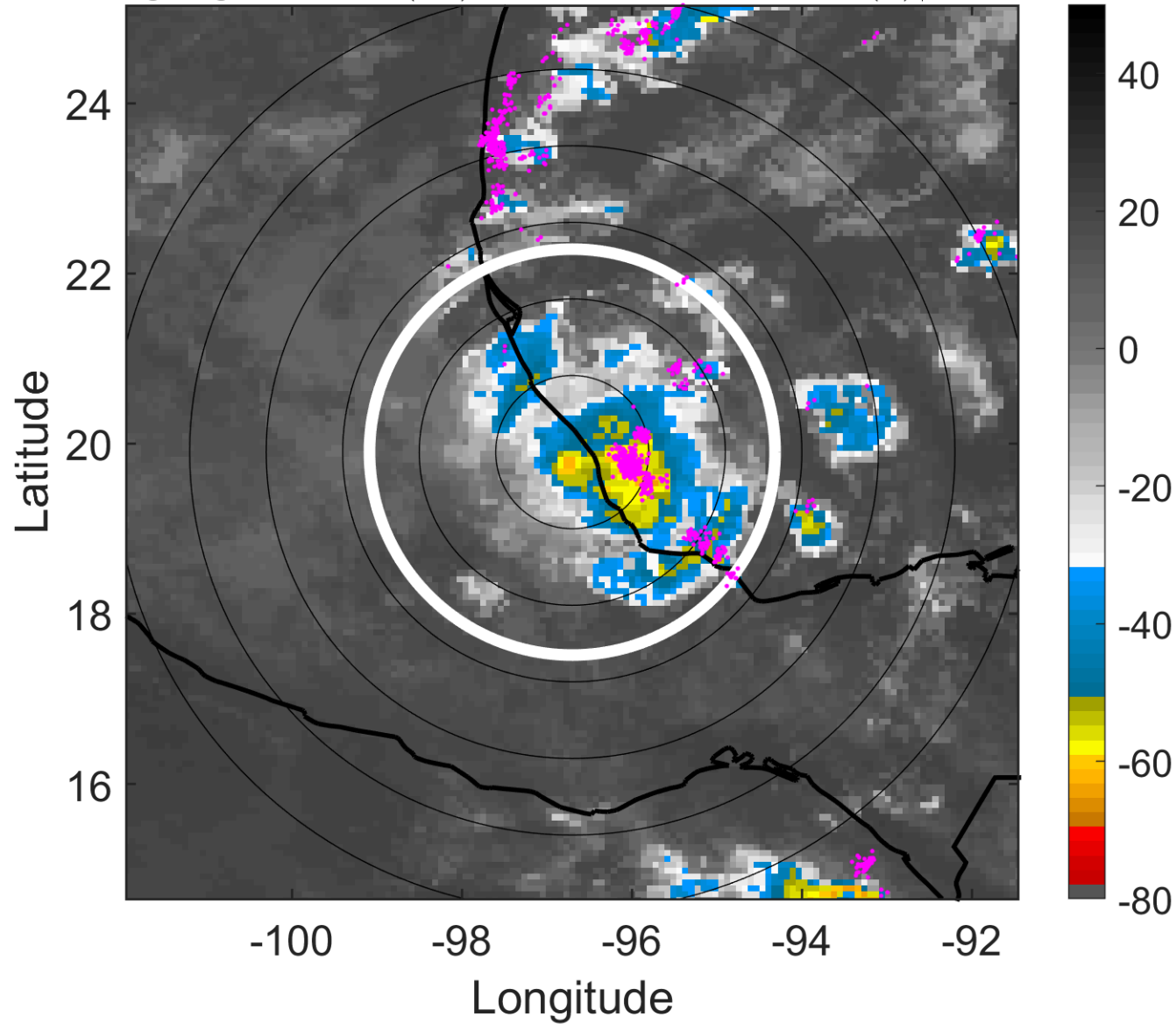
t: 2008100715 (8.6 LT)

Lightning: 8.6 LT \pm 1.5 h (dots)

PT: SLCP | EA: QUASI

13L (MARCO) | 42.5 kt TS

S: 4.4 m s⁻¹ (M) | H: 75.5°



6-h IR BT Differences & Lightning

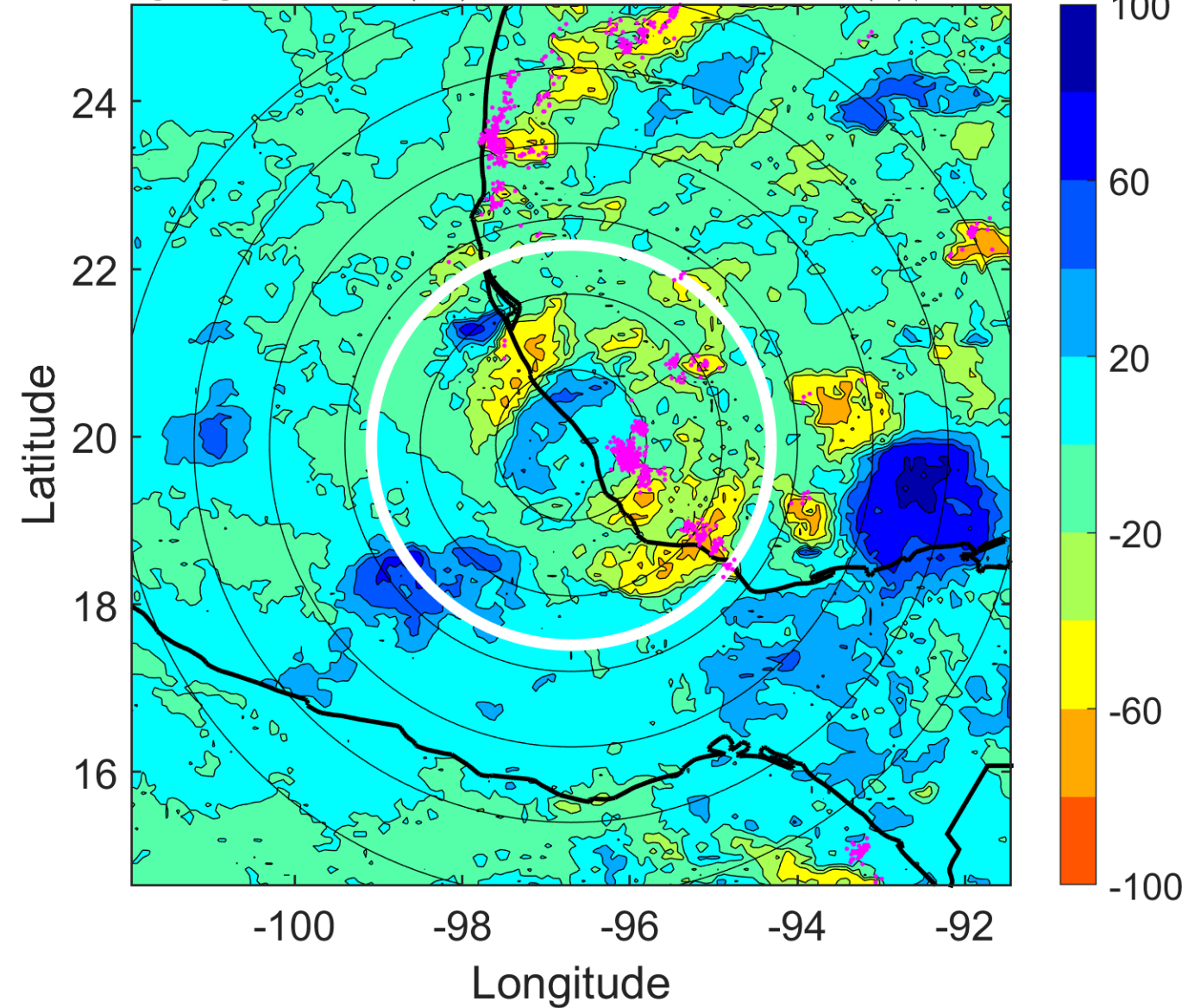
Δ t: 2008100715 (8.6 LT) - 2008100709 (2.6 LT)

Lightning: 8.6 LT \pm 1.5 h (dots)

PT: SLCP | EA: QUASI

13L (MARCO) | 42.5 kt TS

S: 4.4 m s⁻¹ (M) | H: 75.5°



IR BT & Lightning

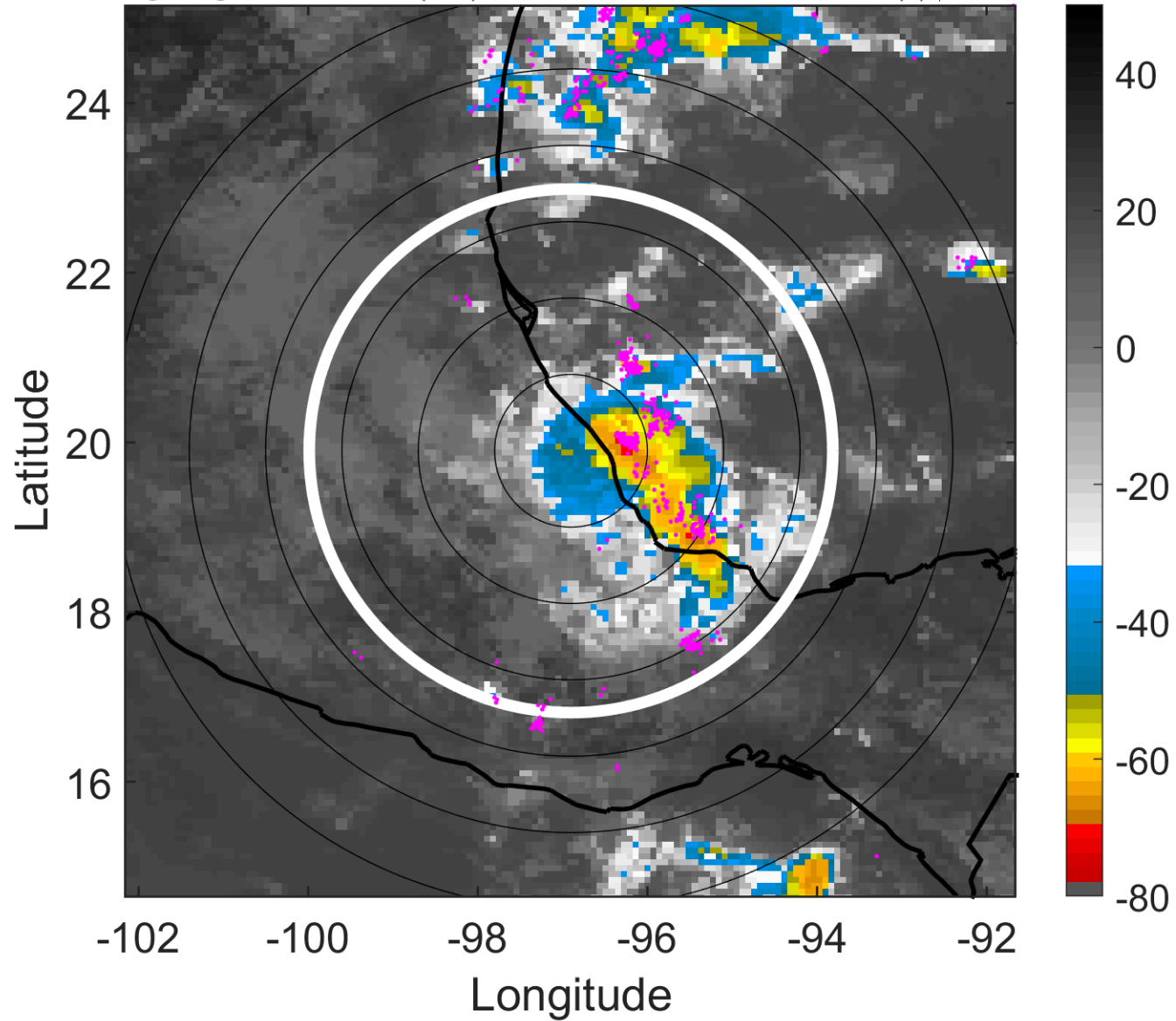
t: 2008100718 (11.5 LT)

Lightning: 11.5 LT \pm 1.5 h (dots)

PT: SLCP | EA: QUASI

13L (MARCO) | 30 kt TD

S: 3.6 m s⁻¹ (L) | H: 70°



6-h IR BT Differences & Lightning

Δ t: 2008100718 (11.5 LT) - 2008100712 (5.6 LT)

Lightning: 11.5 LT \pm 1.5 h (dots)

PT: SLCP | EA: QUASI

13L (MARCO) | 30 kt TD

S: 3.6 m s⁻¹ (L) | H: 70°

