

IR BT & Lightning

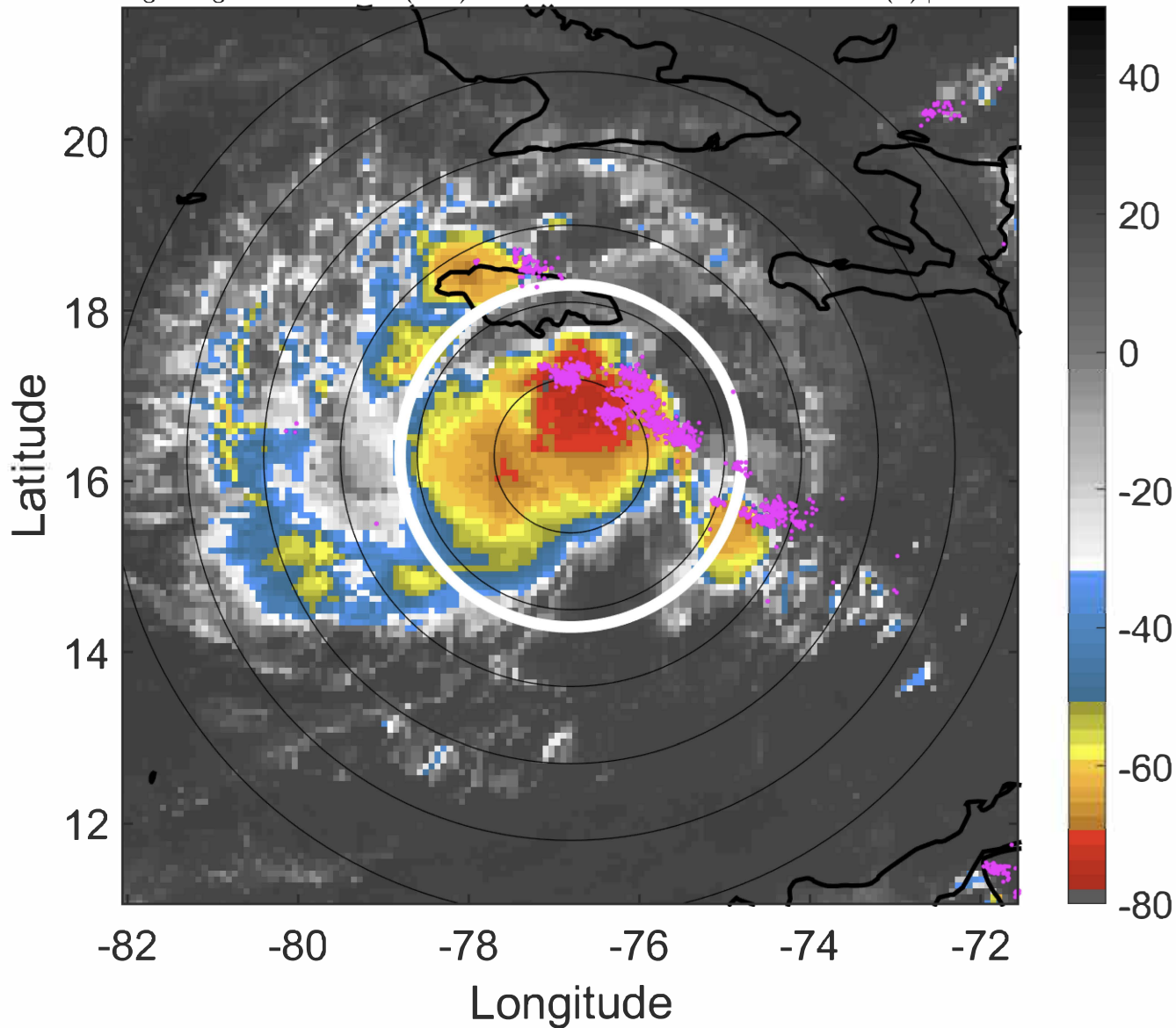
t: 2020090112 (6.9 LT)

Lightning: 6.9 LT \pm 1.5 h (dots)

PT: SLWP | EA: QUASI

16L (NANA) | 40 kt TS

S: 3.8 m s⁻¹ (L) | H: 234°



6-h IR BT Differences & Lightning

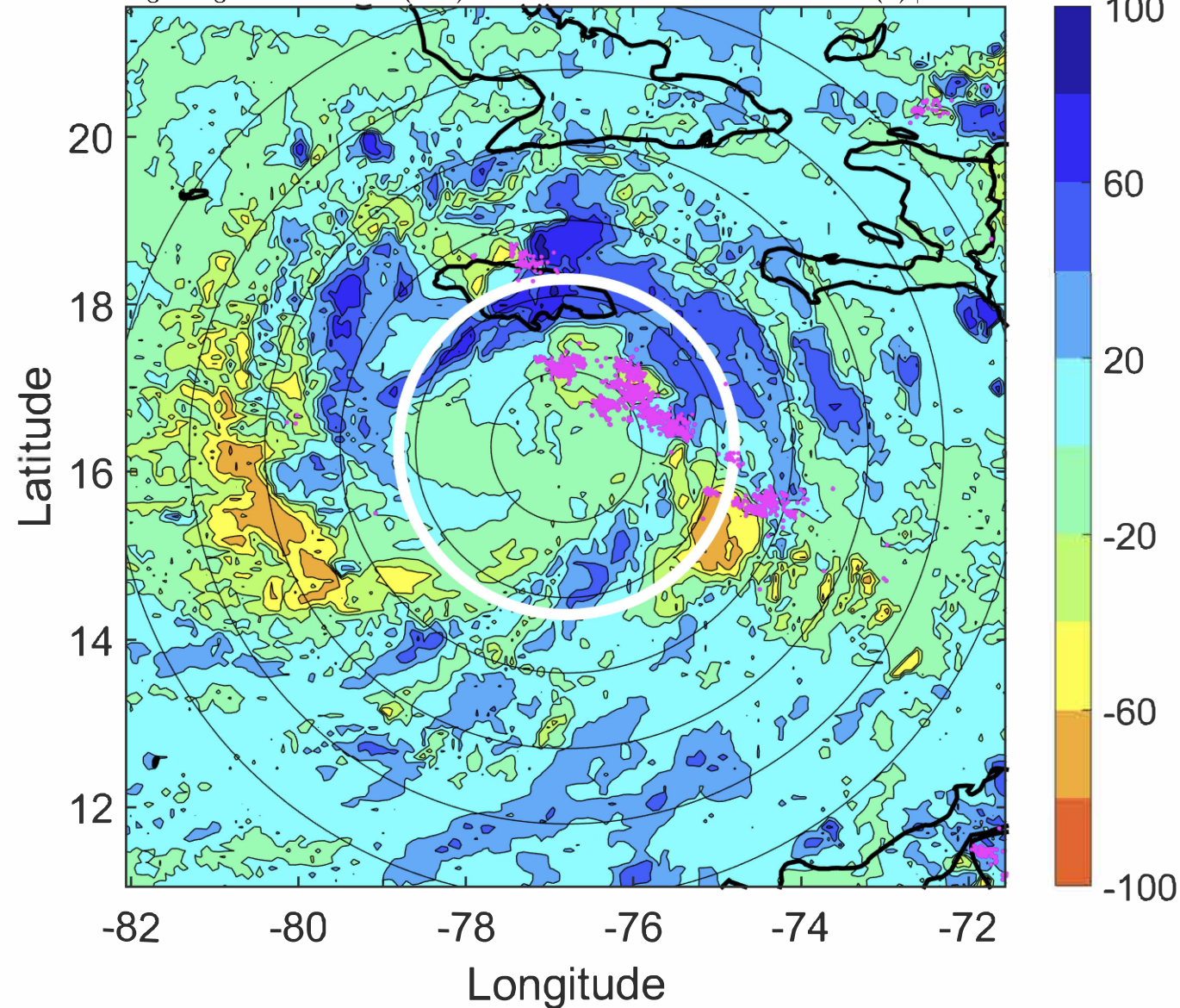
Δ t: 2020090112 (6.9 LT) - 2020090106 (1 LT)

Lightning: 6.9 LT \pm 1.5 h (dots)

PT: SLWP | EA: QUASI

16L (NANA) | 40 kt TS

S: 3.8 m s⁻¹ (L) | H: 234°



IR BT & Lightning

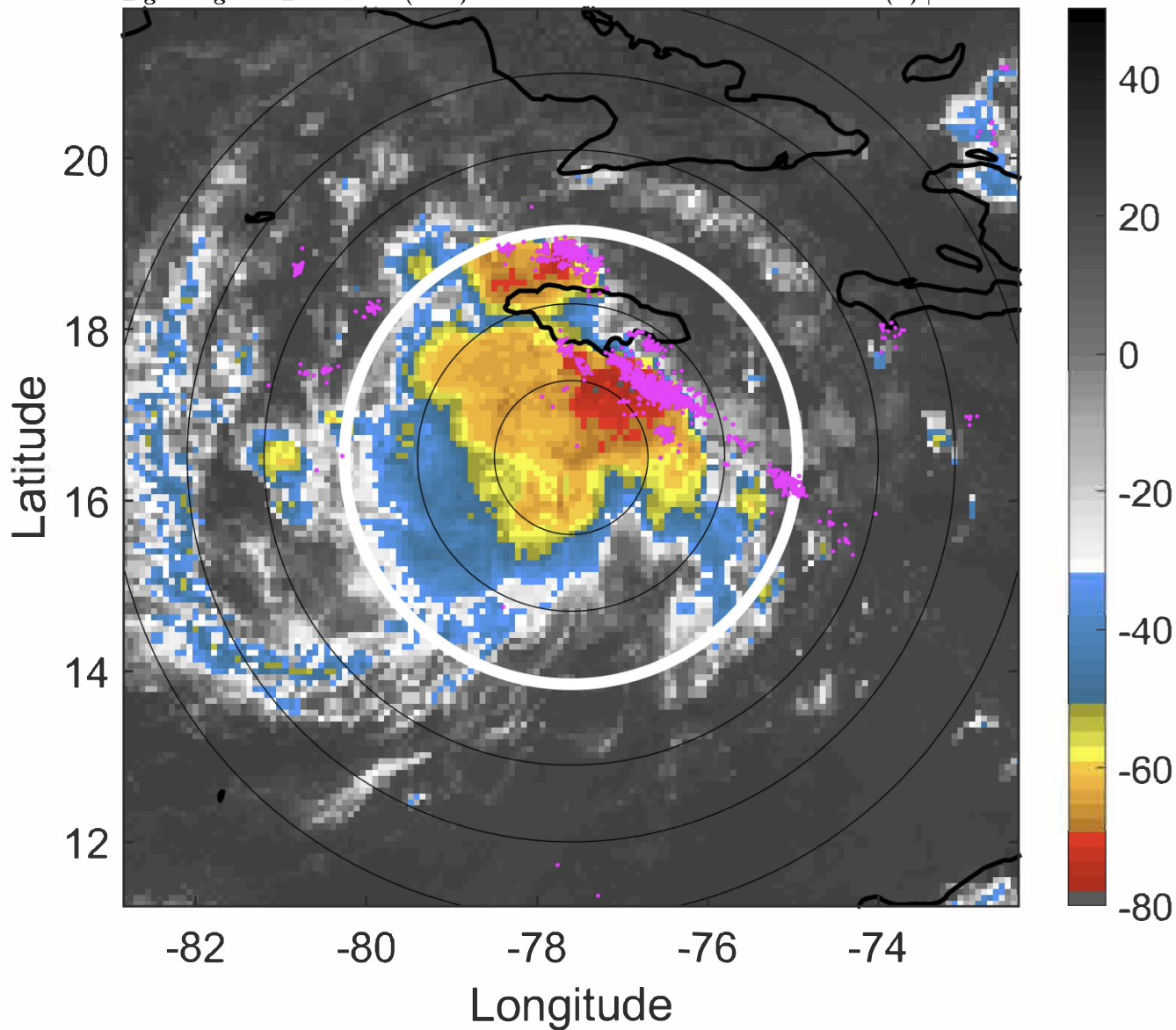
t: 2020090115 (9.8 LT)

Lightning: 9.8 LT \pm 1.5 h (dots)

PT: SLWP | EA: QUASI

16L (NANA) | 45 kt TS

S: 3.9 m s⁻¹ (L) | H: 230°



6-h IR BT Differences & Lightning

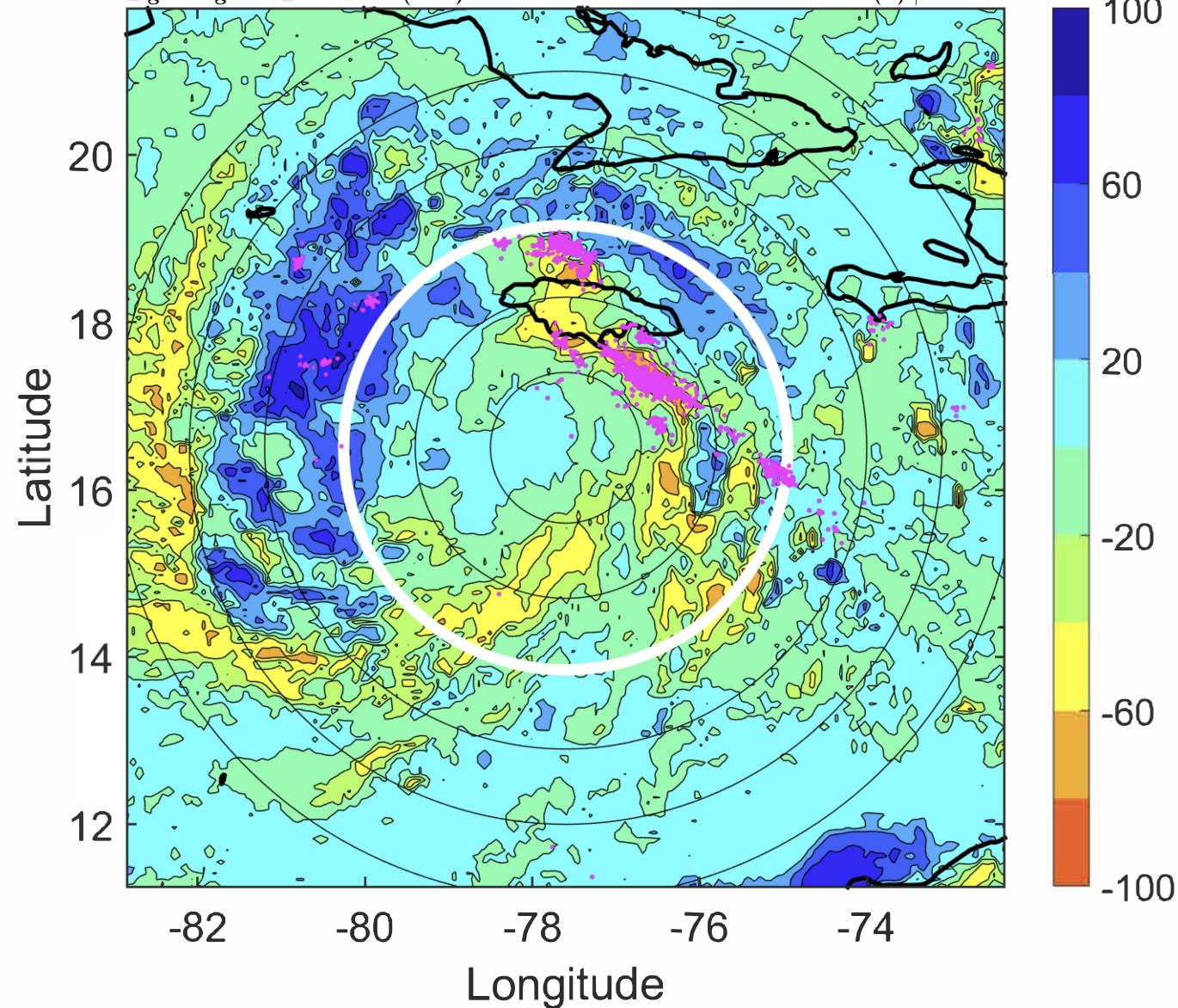
Δ t: 2020090115 (9.8 LT) - 2020090109 (3.9 LT)

Lightning: 9.8 LT \pm 1.5 h (dots)

PT: SLWP | EA: QUASI

16L (NANA) | 45 kt TS

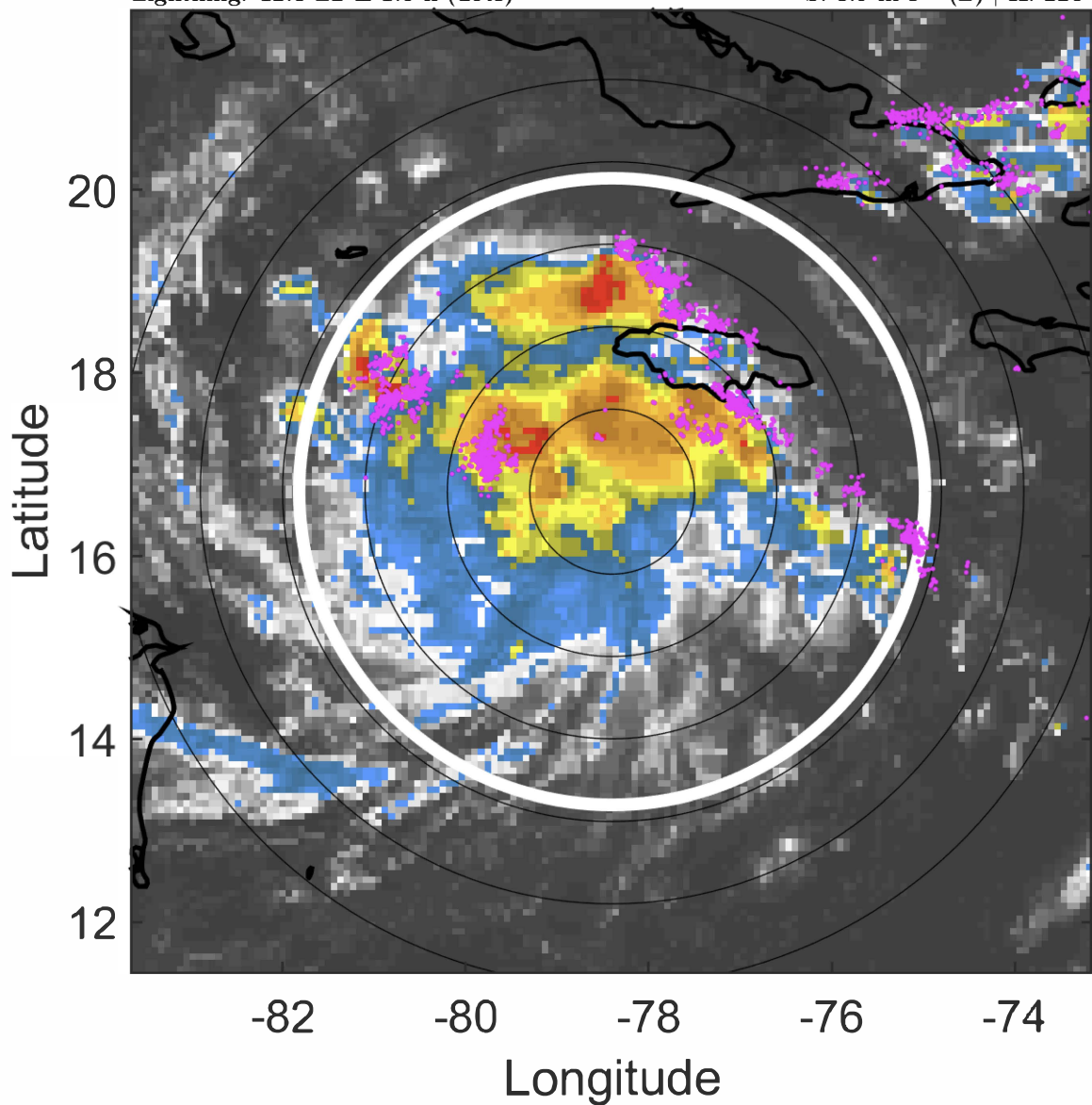
S: 3.9 m s⁻¹ (L) | H: 230°



IR BT & Lightning

t: 2020090118 (12.8 LT)
Lightning: 12.8 LT \pm 1.5 h (dots)

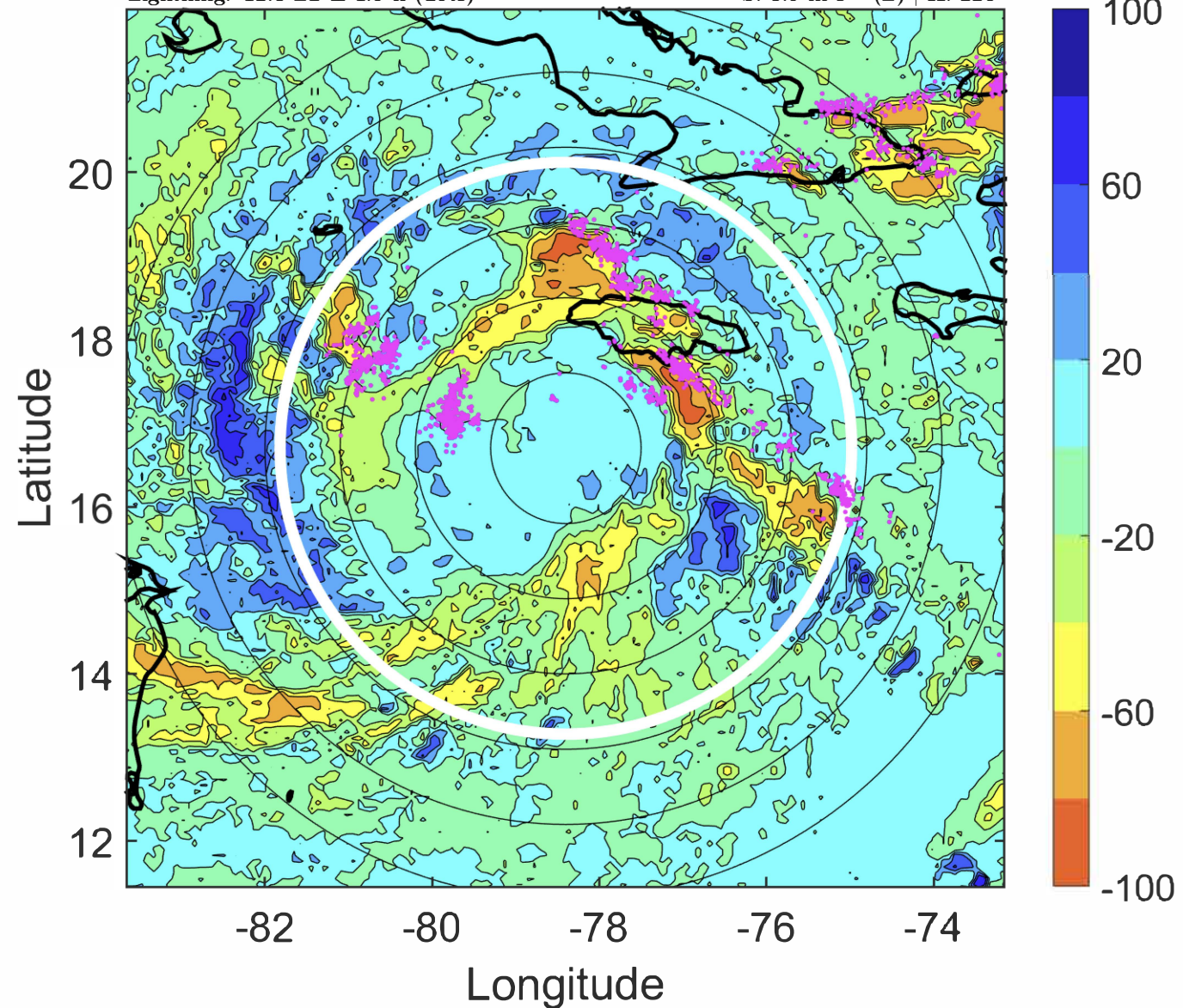
PT: SLWP | EA: QUASI
16L (NANA) | 50 kt TS
S: 3.9 m s⁻¹ (L) | H: 226°

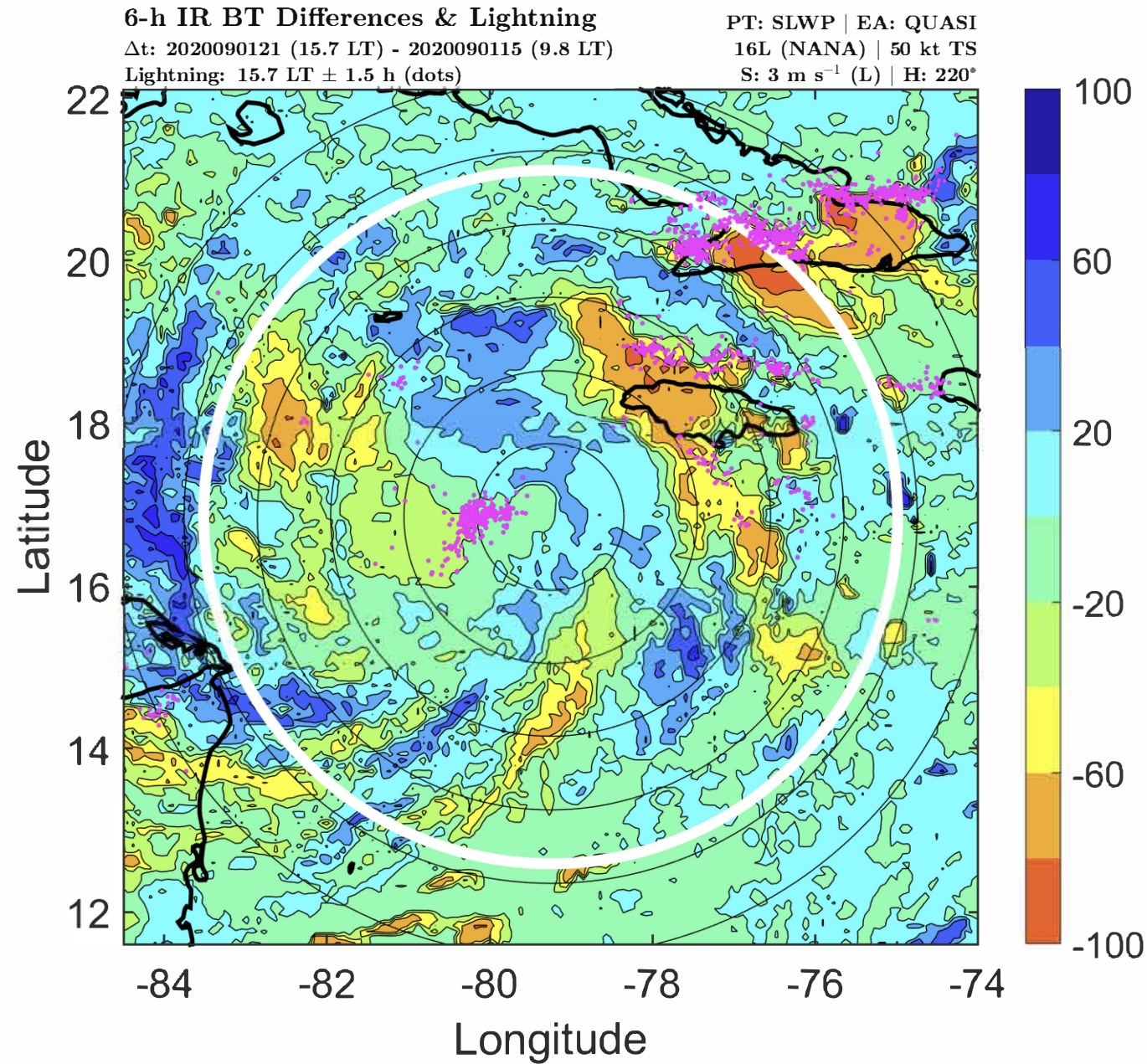
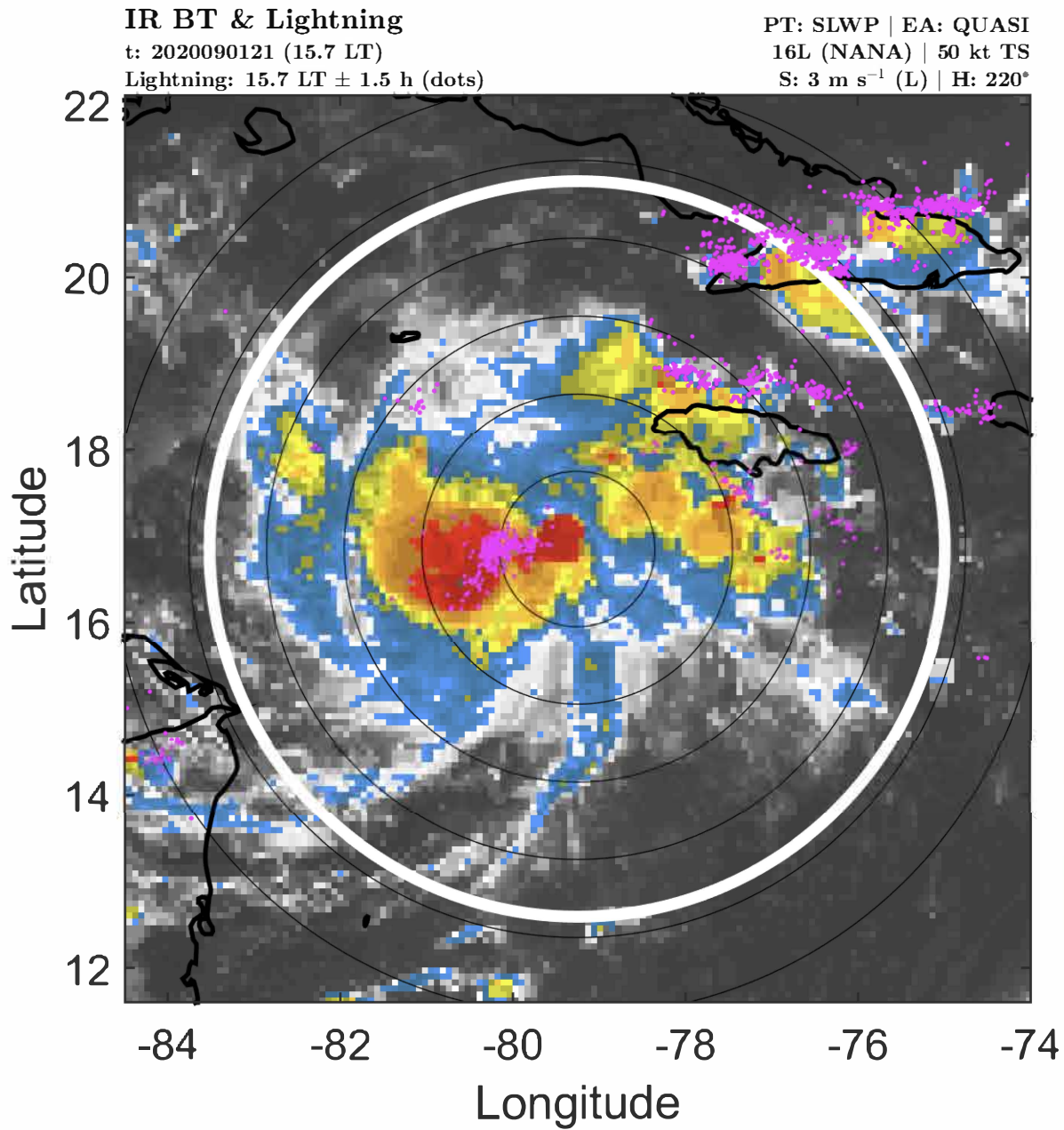


6-h IR BT Differences & Lightning

Δ t: 2020090118 (12.8 LT) - 2020090112 (6.9 LT)
Lightning: 12.8 LT \pm 1.5 h (dots)

PT: SLWP | EA: QUASI
16L (NANA) | 50 kt TS
S: 3.9 m s⁻¹ (L) | H: 226°





IR BT & Lightning

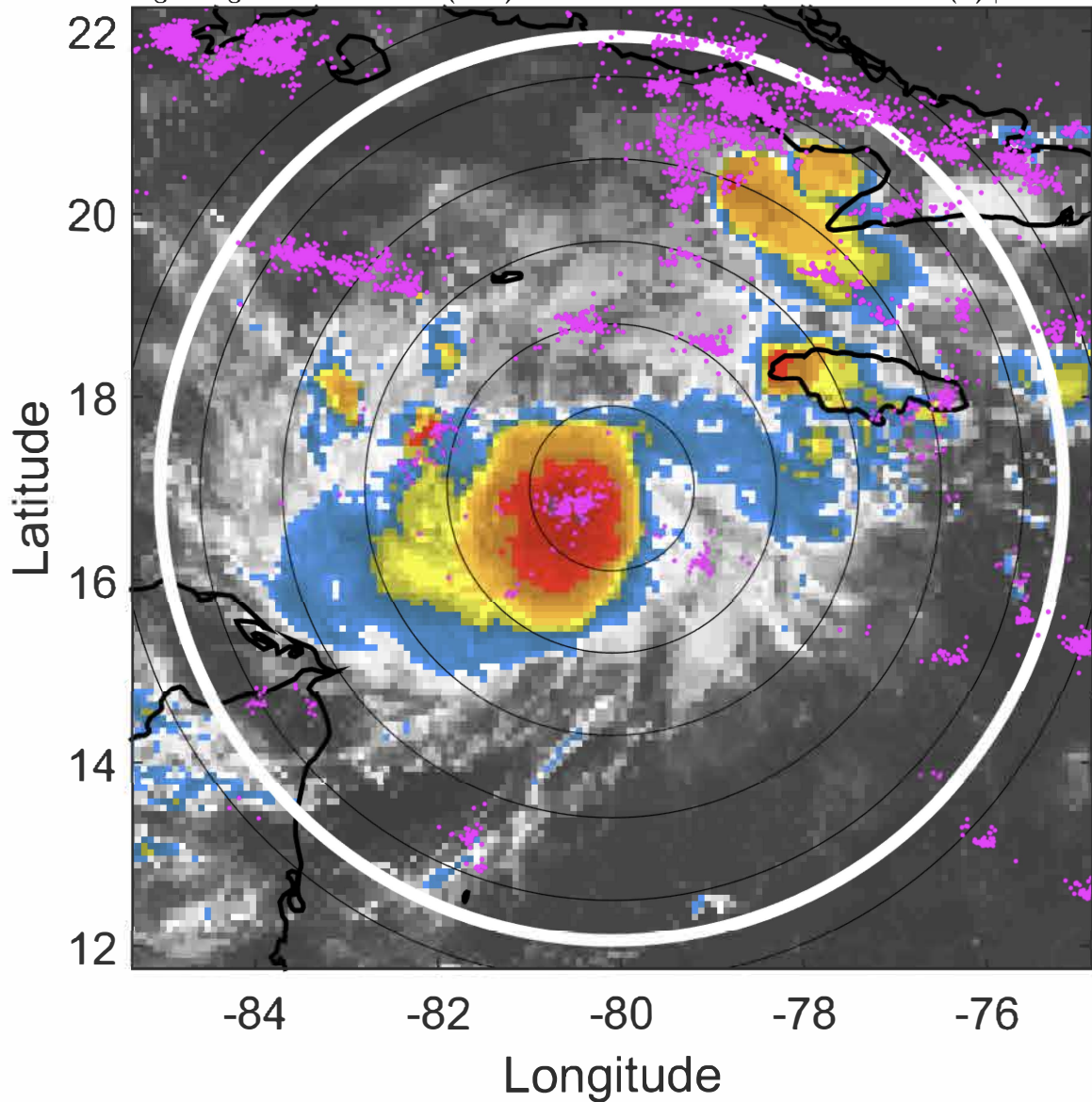
t: 2020090200 (18.7 LT)

Lightning: 18.7 LT \pm 1.5 h (dots)

PT: SLWP | EA: QUASI

16L (NANA) | 50 kt TS

S: 2 m s⁻¹ (L) | H: 214°



6-h IR BT Differences & Lightning

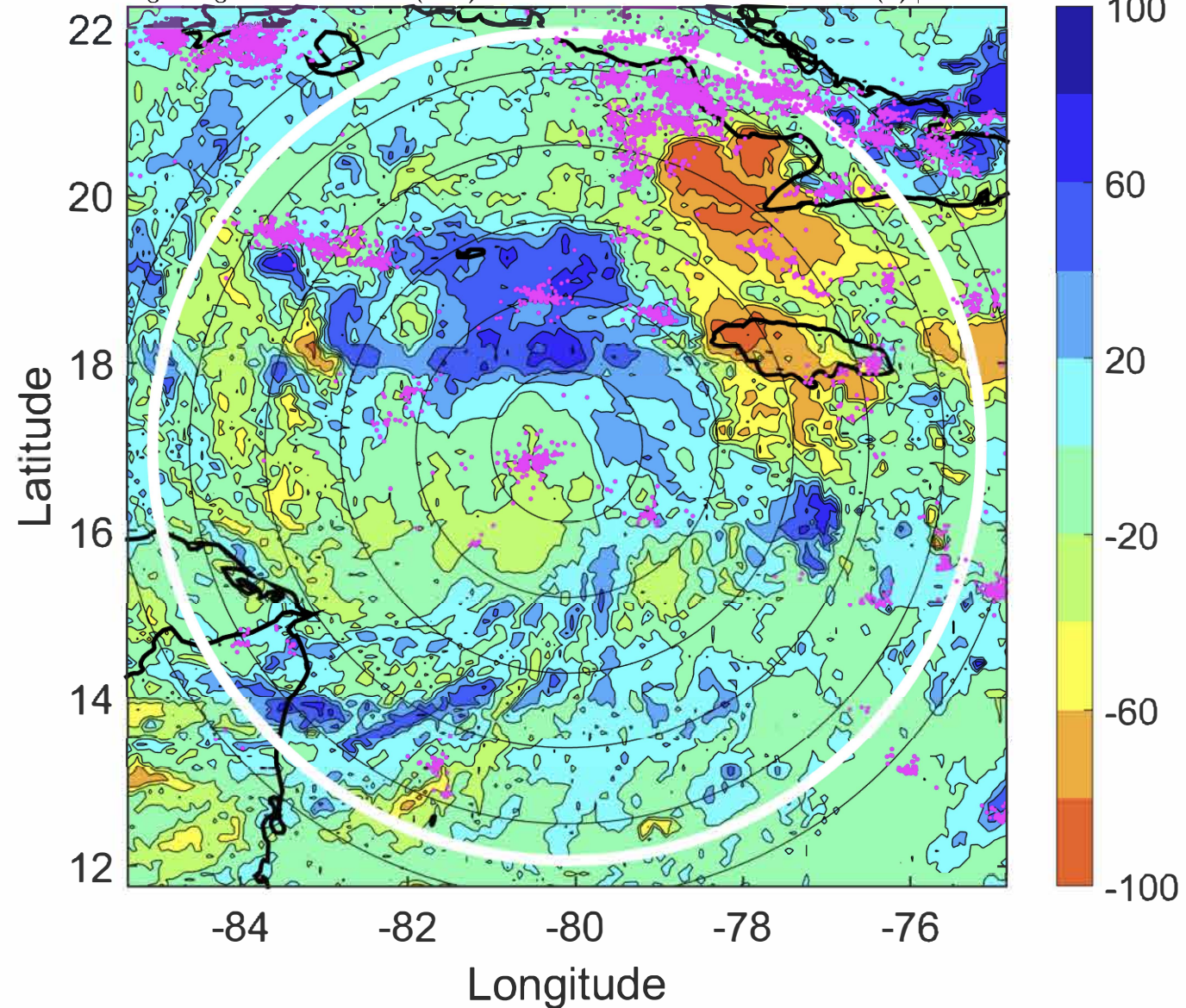
Δ t: 2020090200 (18.7 LT) - 2020090118 (12.8 LT)

Lightning: 18.7 LT \pm 1.5 h (dots)

PT: SLWP | EA: QUASI

16L (NANA) | 50 kt TS

S: 2 m s⁻¹ (L) | H: 214°



IR BT & Lightning

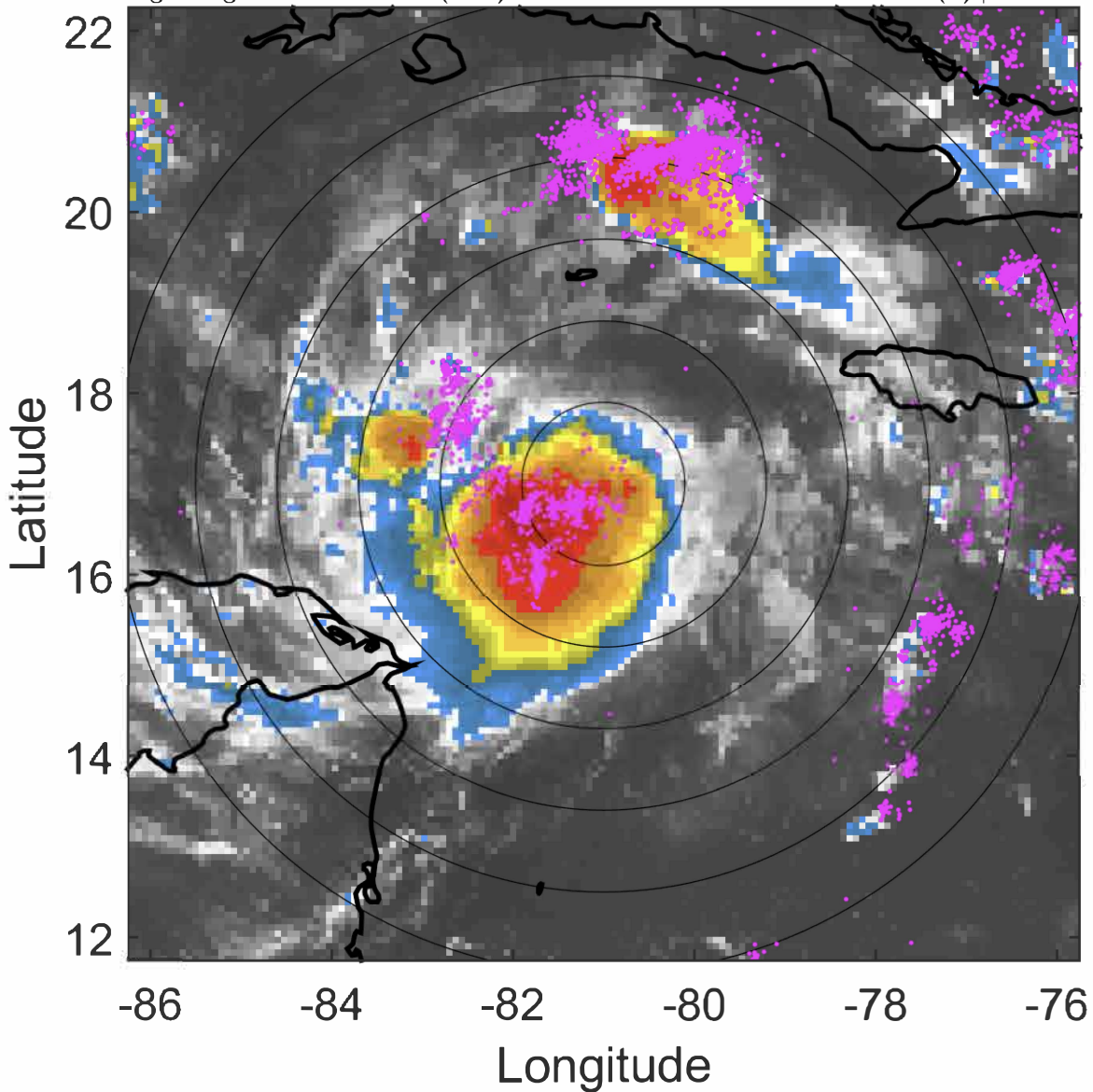
t: 2020090203 (21.6 LT)

Lightning: 21.6 LT \pm 1.5 h (dots)

PT: SLWP | EA: QUASI

16L (NANA) | 50 kt TS

S: 2.2 m s⁻¹ (L) | H: 201°



6-h IR BT Differences & Lightning

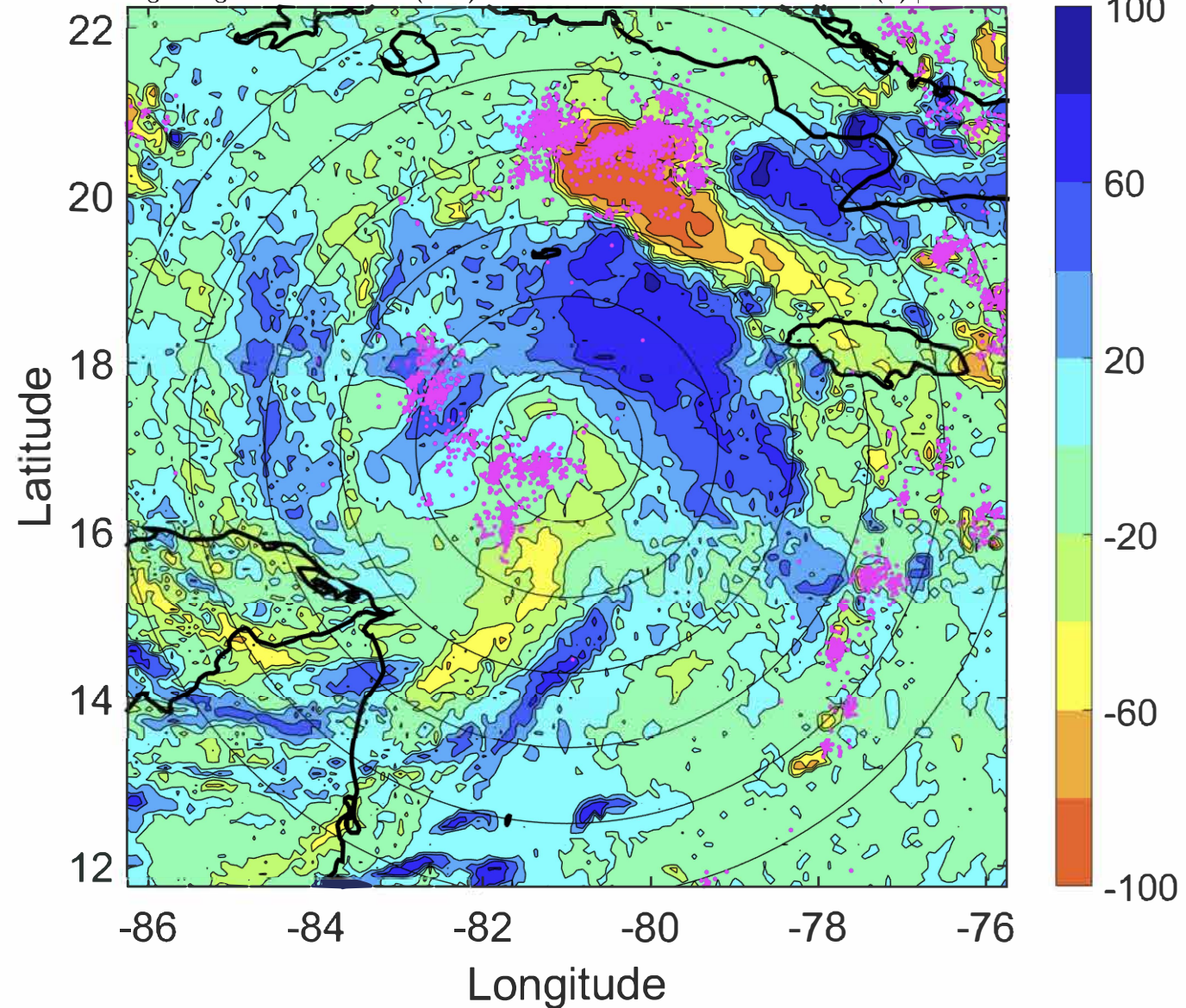
Δ t: 2020090203 (21.6 LT) - 2020090121 (15.7 LT)

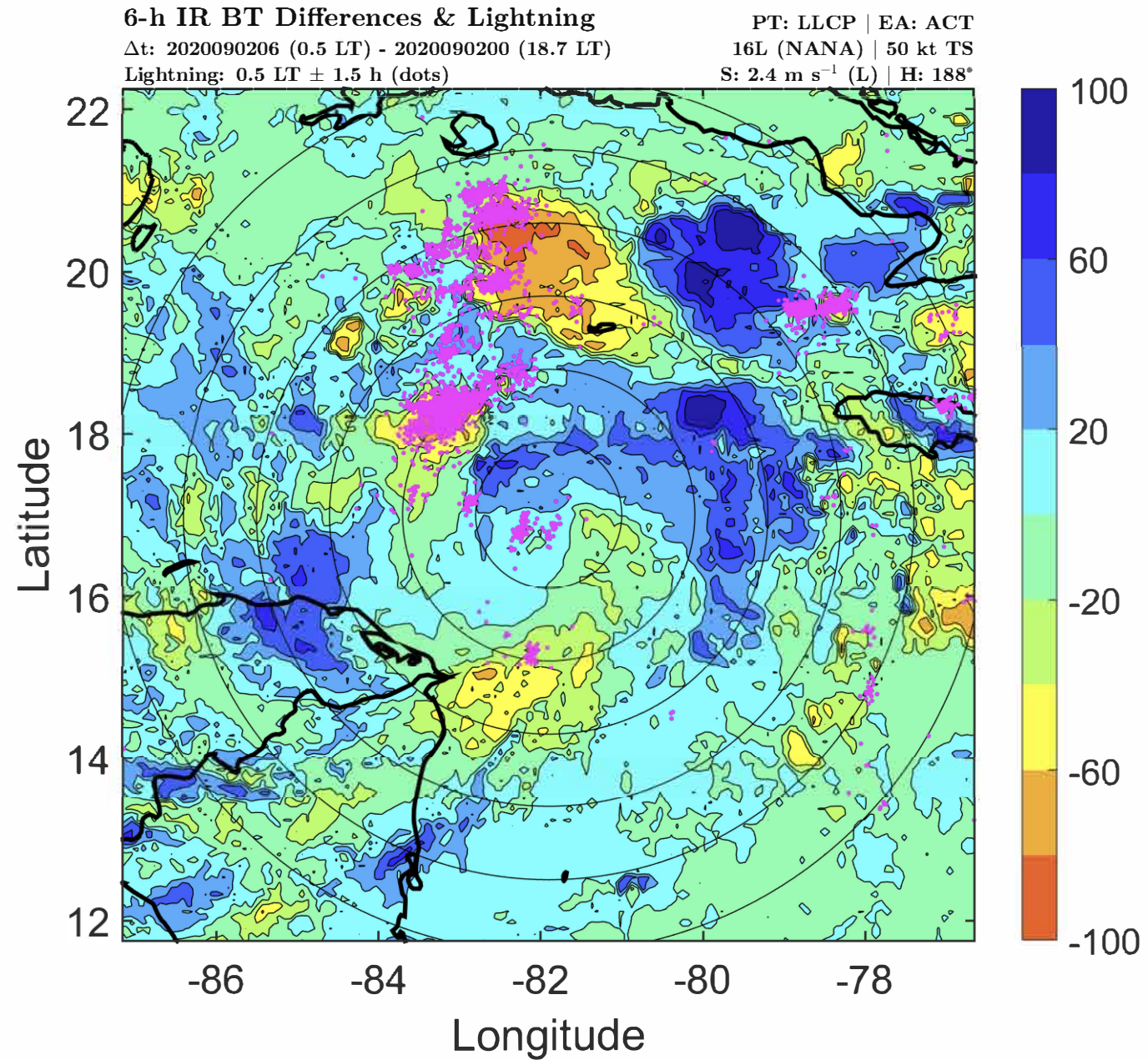
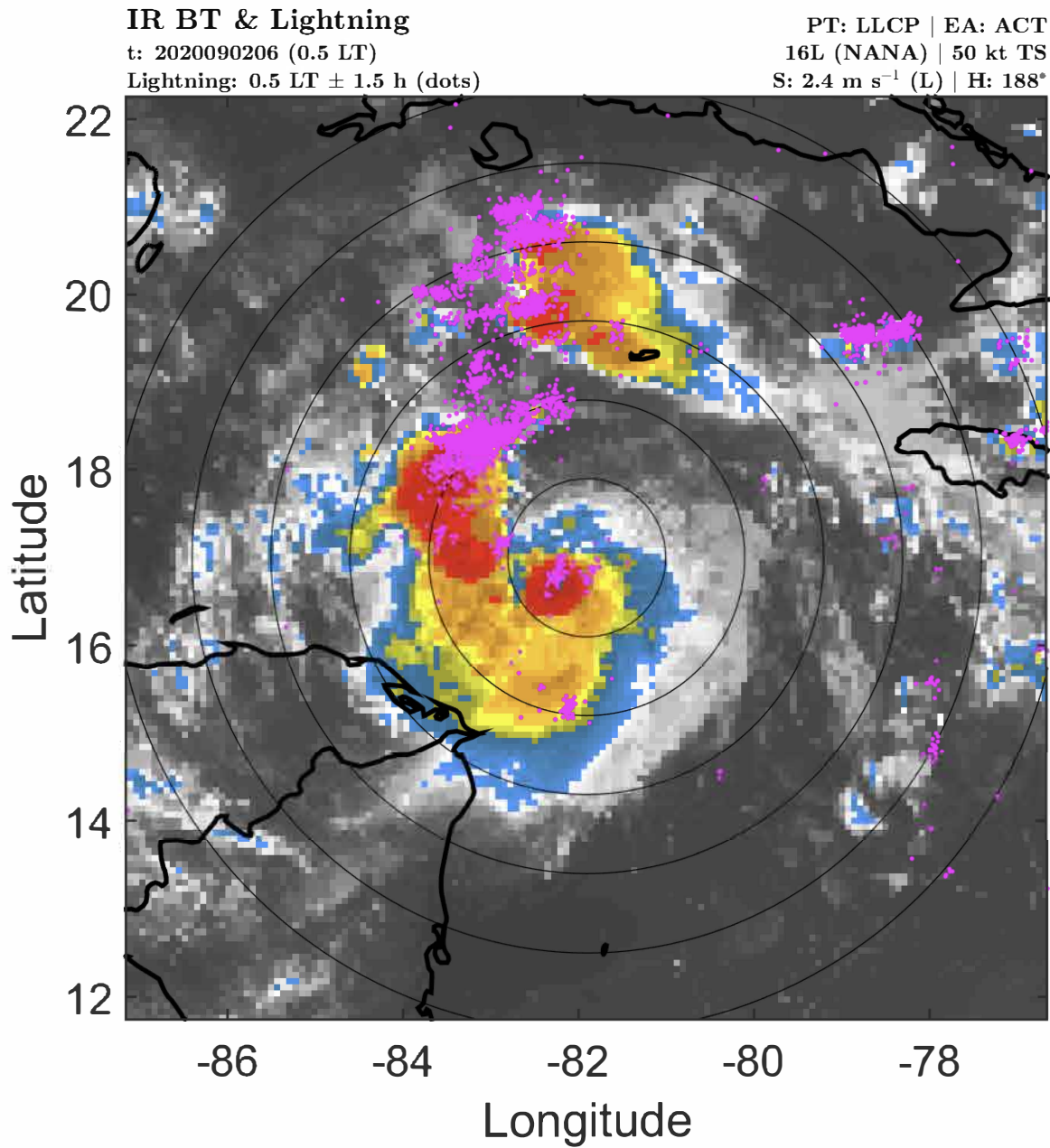
Lightning: 21.6 LT \pm 1.5 h (dots)

PT: SLWP | EA: QUASI

16L (NANA) | 50 kt TS

S: 2.2 m s⁻¹ (L) | H: 201°





IR BT & Lightning

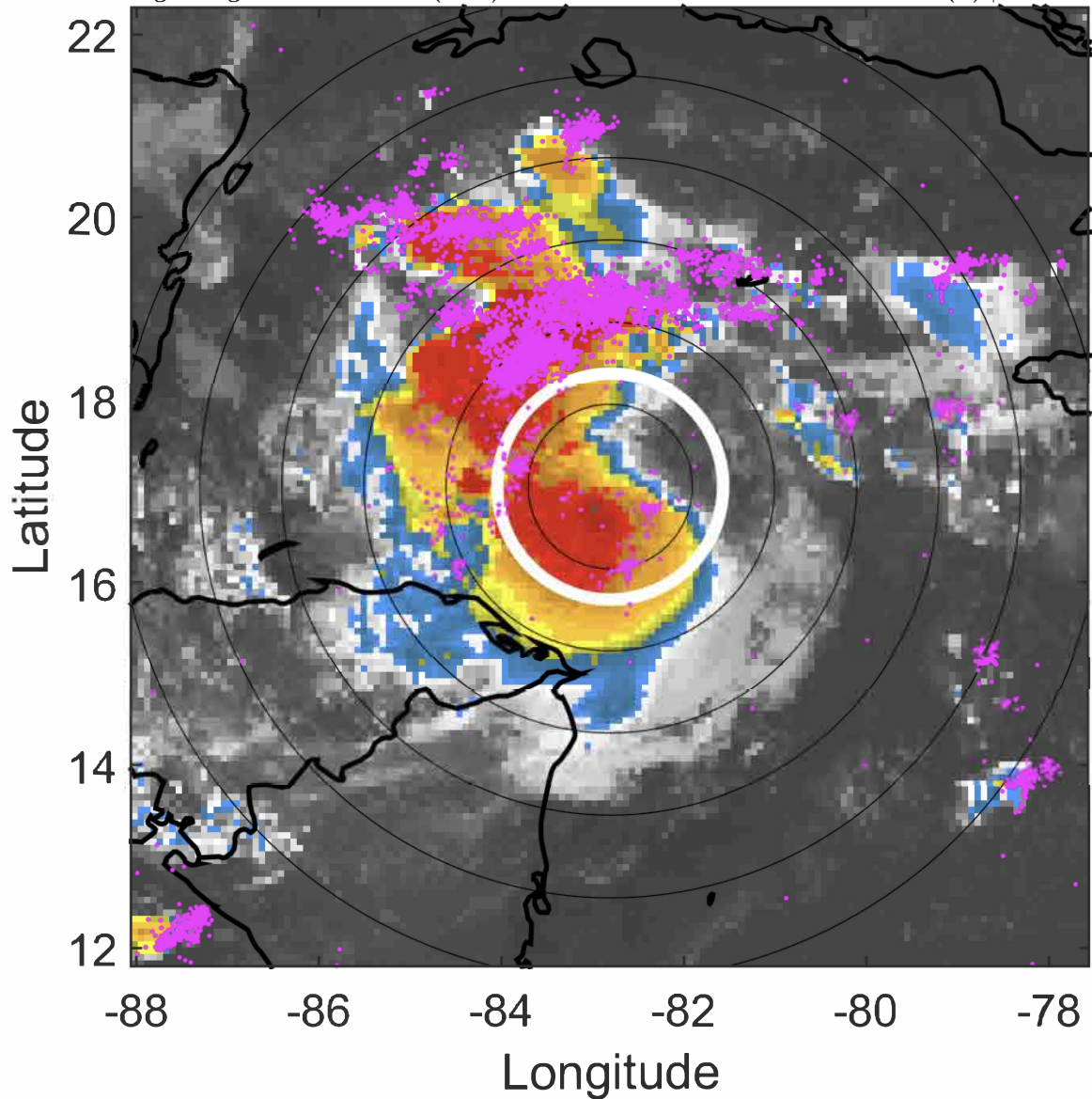
t: 2020090209 (3.5 LT)

Lightning: 3.5 LT \pm 1.5 h (dots)

PT: LLCP | EA: ACT

16L (NANA) | 50 kt TS

S: 3.5 m s⁻¹ (L) | H: 191°



6-h IR BT Differences & Lightning

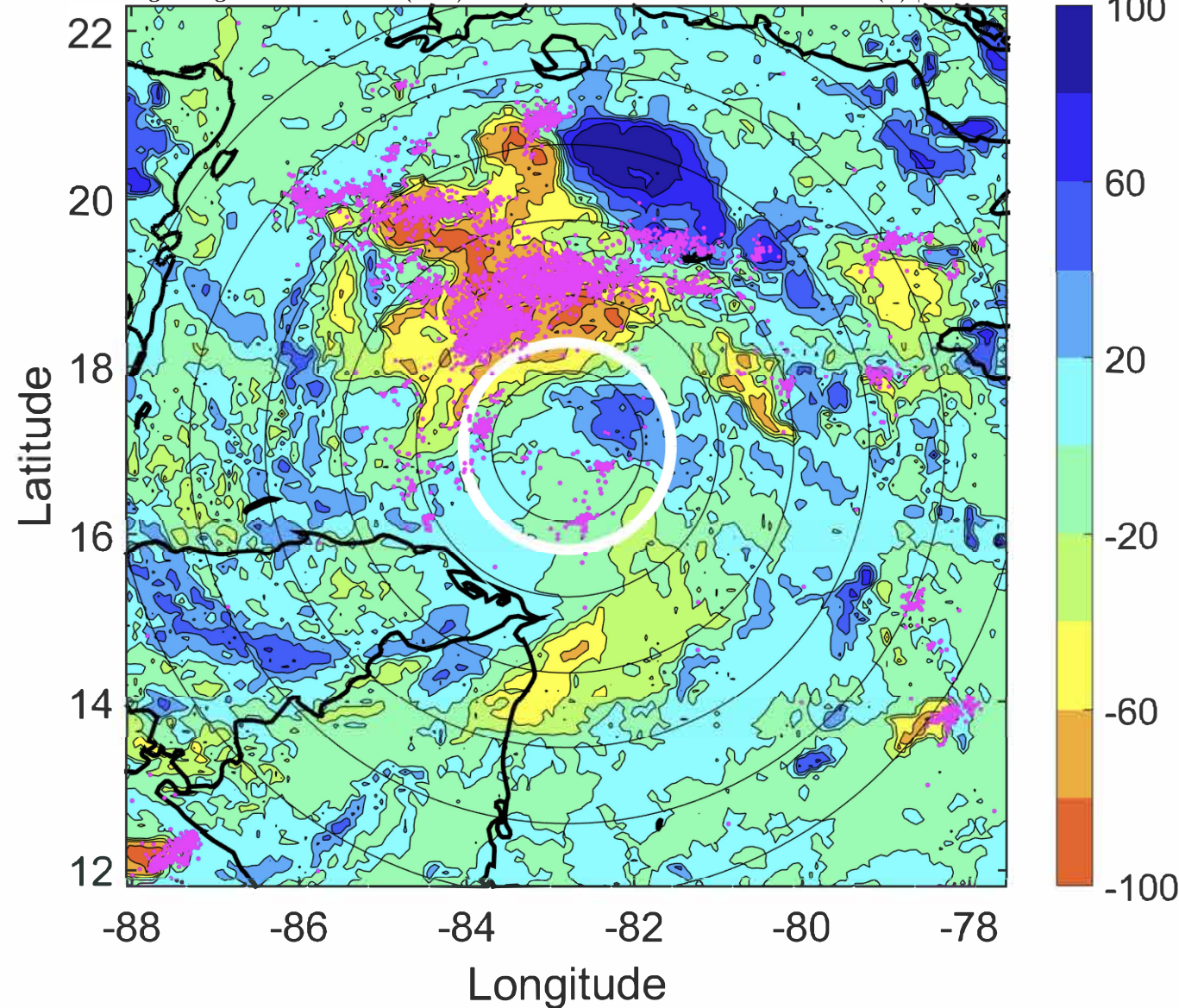
Δ t: 2020090209 (3.5 LT) - 2020090203 (21.6 LT)

Lightning: 3.5 LT \pm 1.5 h (dots)

PT: LLCP | EA: ACT

16L (NANA) | 50 kt TS

S: 3.5 m s⁻¹ (L) | H: 191°



IR BT & Lightning

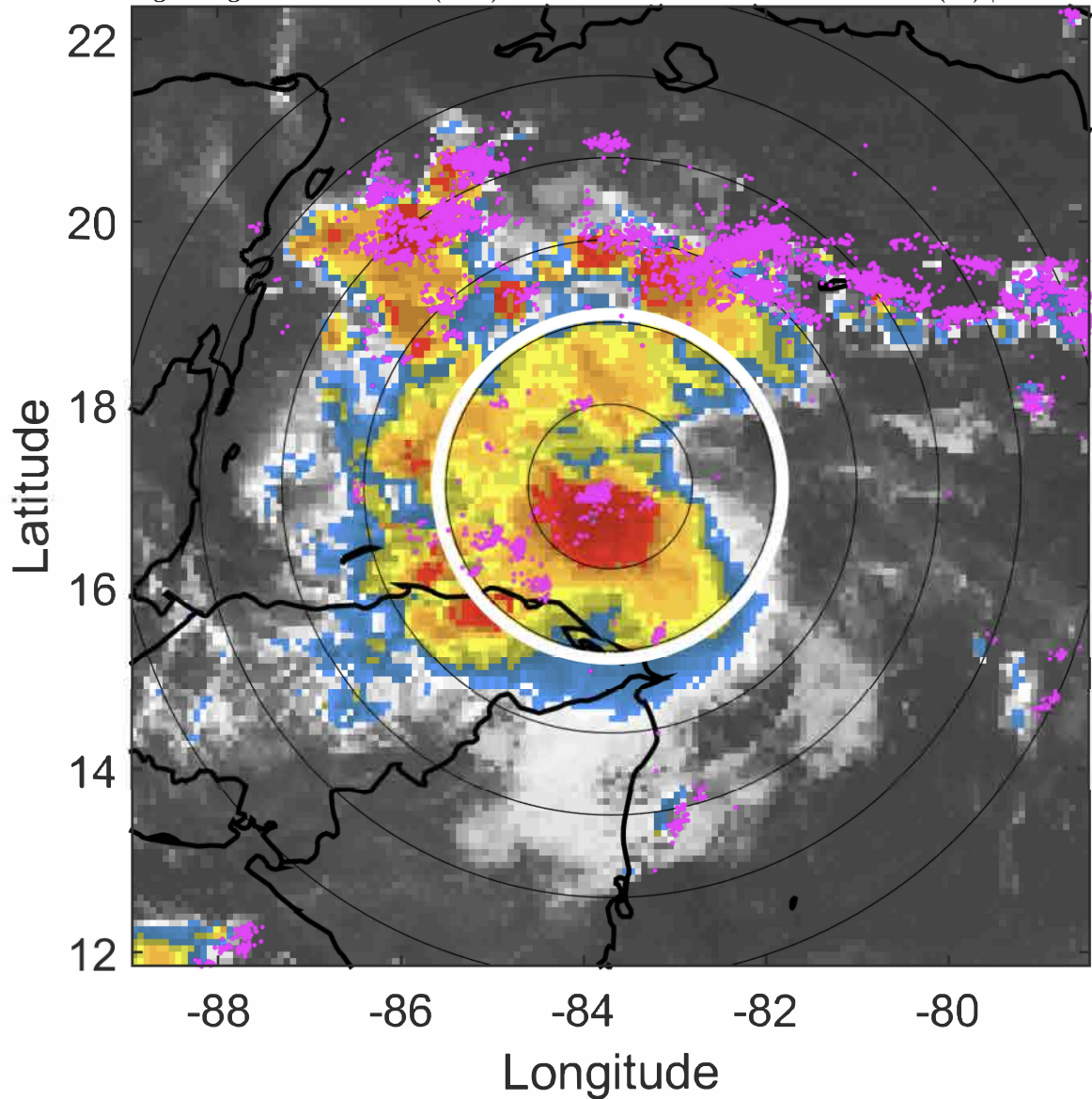
t: 2020090212 (6.4 LT)

Lightning: 6.4 LT \pm 1.5 h (dots)

PT: LLCP | EA: ACT

16L (NANA) | 50 kt TS

S: 4.6 m s⁻¹ (M) | H: 194°



6-h IR BT Differences & Lightning

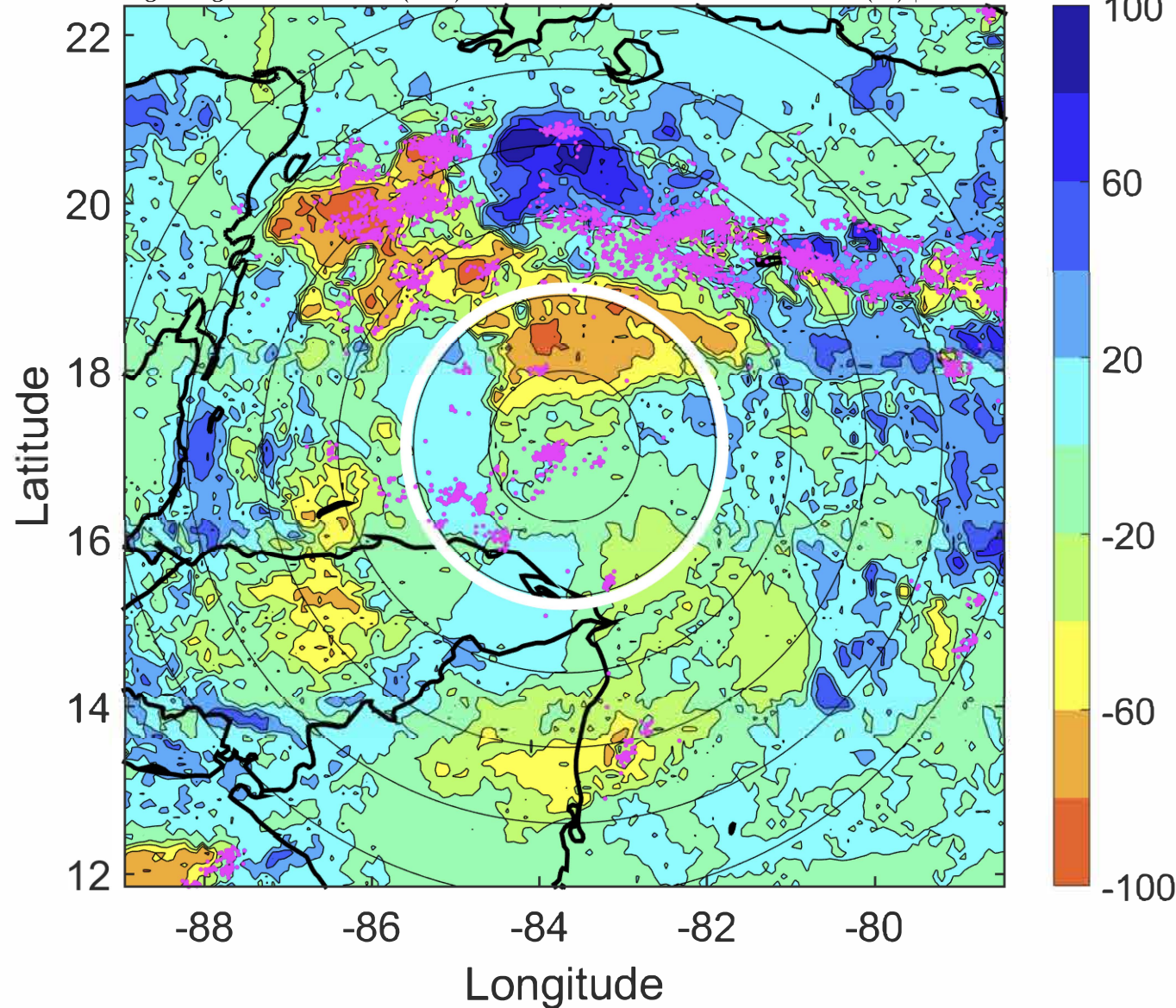
Δ t: 2020090212 (6.4 LT) - 2020090206 (0.5 LT)

Lightning: 6.4 LT \pm 1.5 h (dots)

PT: LLCP | EA: ACT

16L (NANA) | 50 kt TS

S: 4.6 m s⁻¹ (M) | H: 194°



IR BT & Lightning

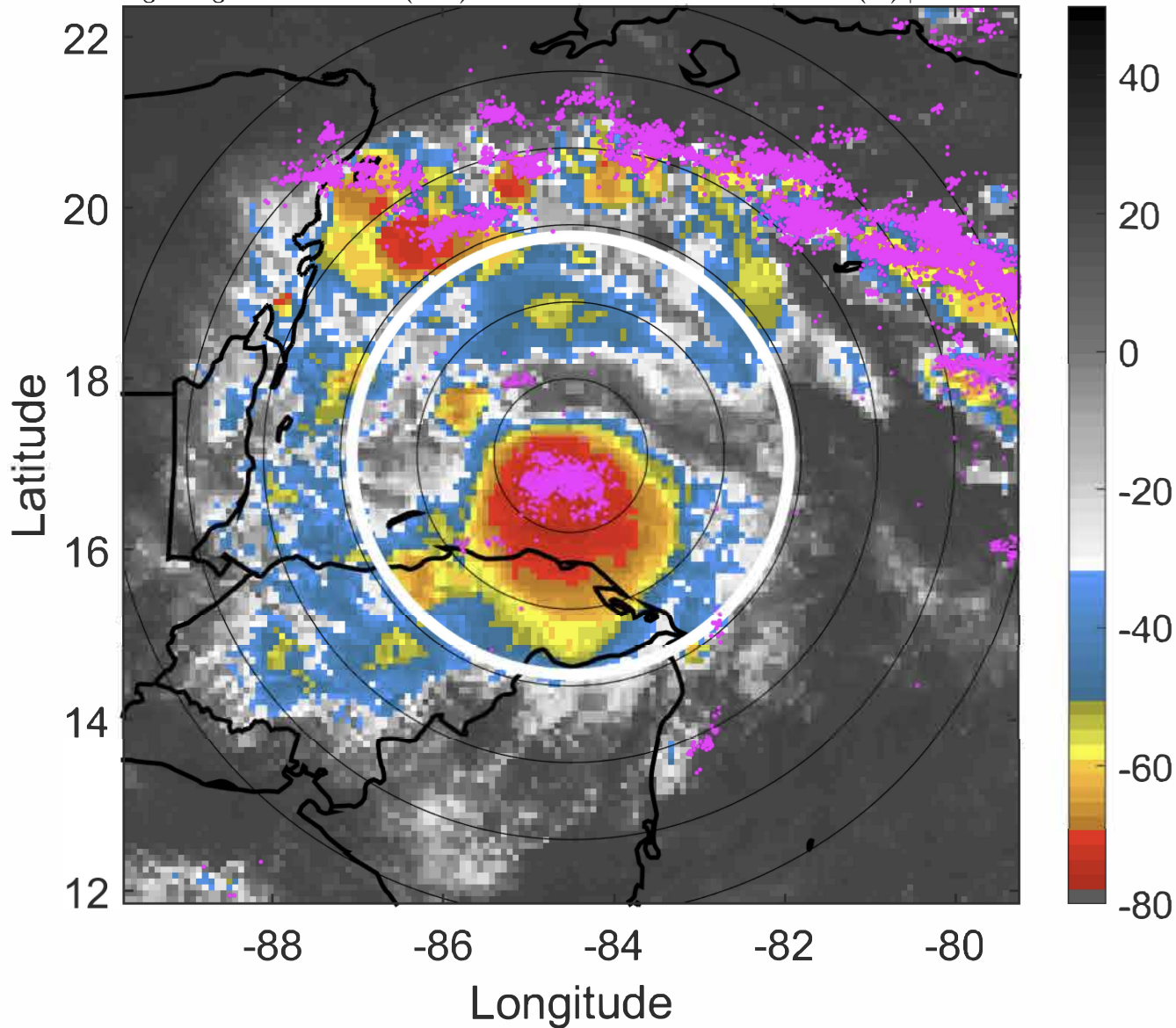
t: 2020090215 (9.4 LT)

Lightning: 9.4 LT \pm 1.5 h (dots)

PT: LLCP | EA: ACT

16L (NANA) | 50 kt TS

S: 4.7 m s⁻¹ (M) | H: 199.5°



6-h IR BT Differences & Lightning

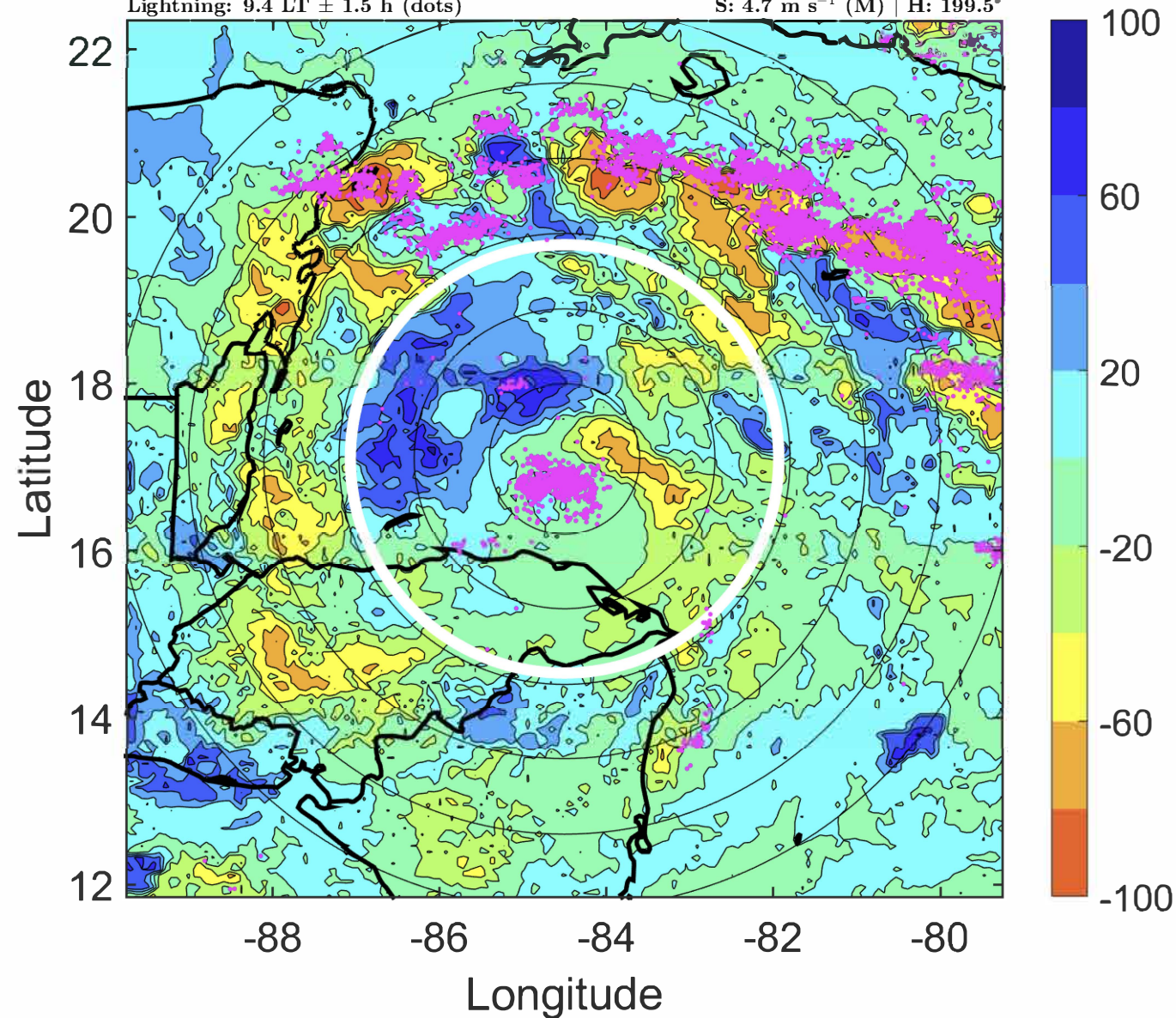
Δ t: 2020090215 (9.4 LT) - 2020090209 (3.5 LT)

Lightning: 9.4 LT \pm 1.5 h (dots)

PT: LLCP | EA: ACT

16L (NANA) | 50 kt TS

S: 4.7 m s⁻¹ (M) | H: 199.5°



IR BT & Lightning

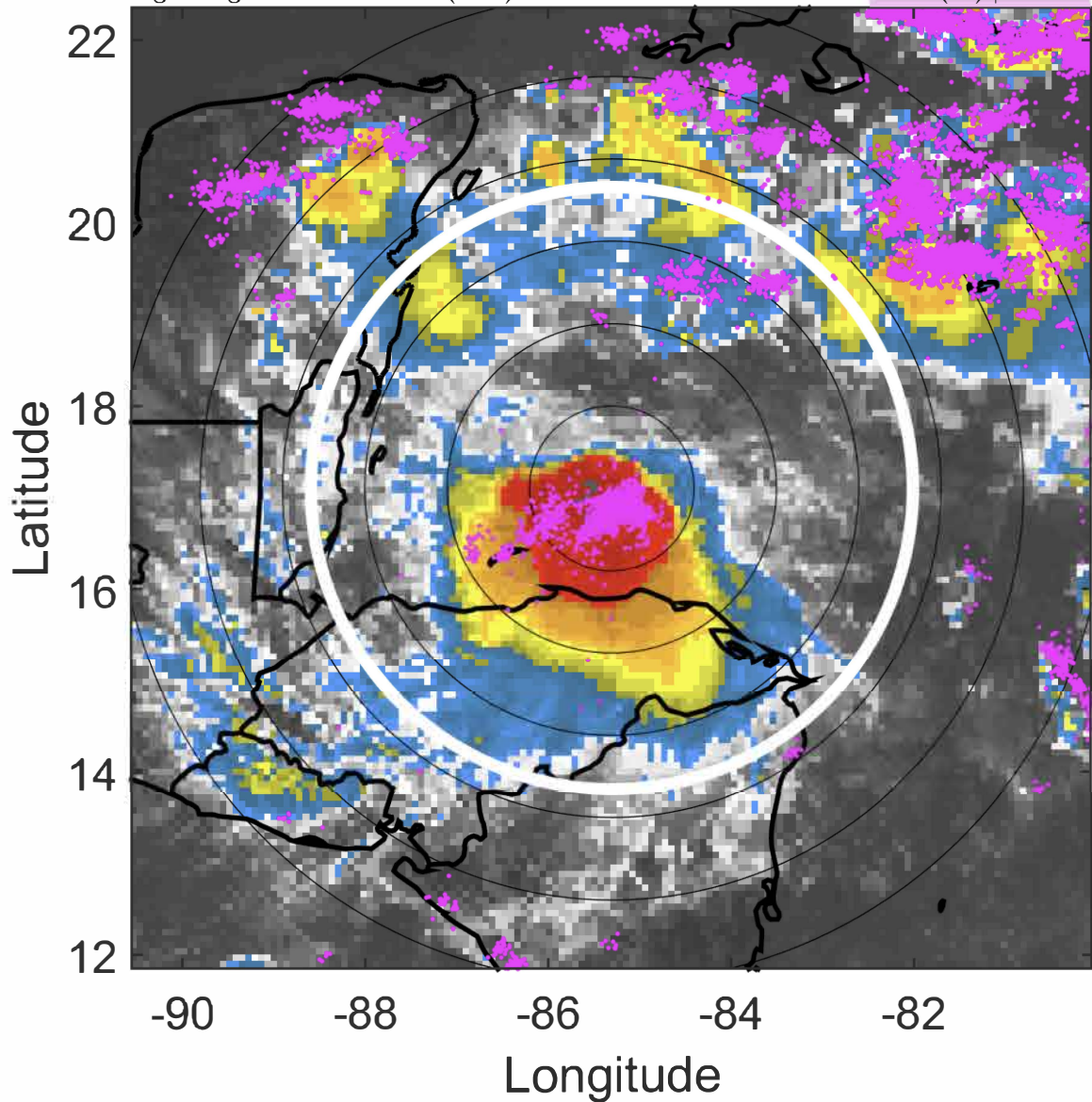
t: 2020090218 (12.3 LT)

Lightning: 12.3 LT \pm 1.5 h (dots)

PT: LLCP | EA: ACT

16L (NANA) | 50 kt TS

S: 4.8 m s⁻¹ (M) | H: 205°



6-h IR BT Differences & Lightning

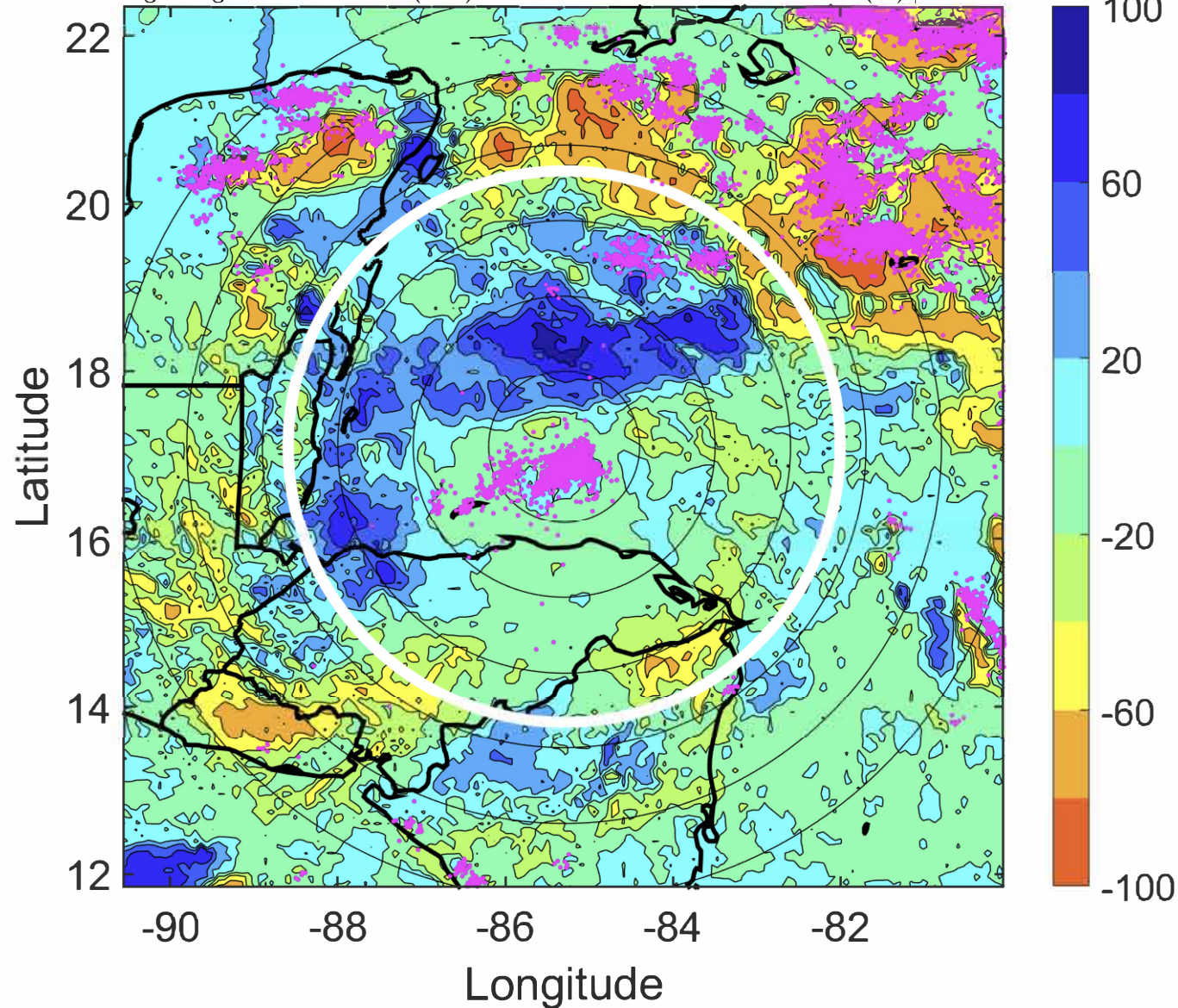
Δ t: 2020090218 (12.3 LT) - 2020090212 (6.4 LT)

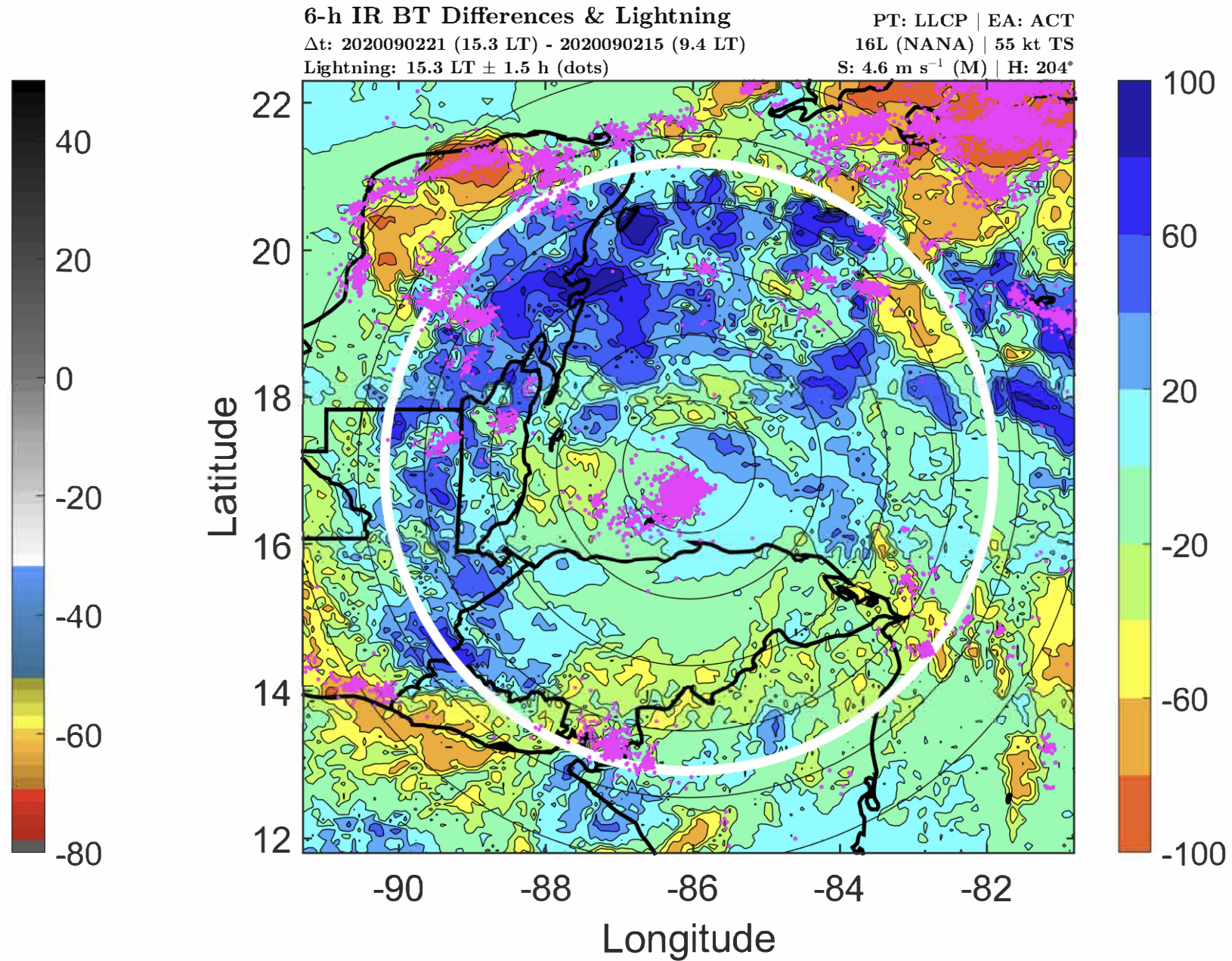
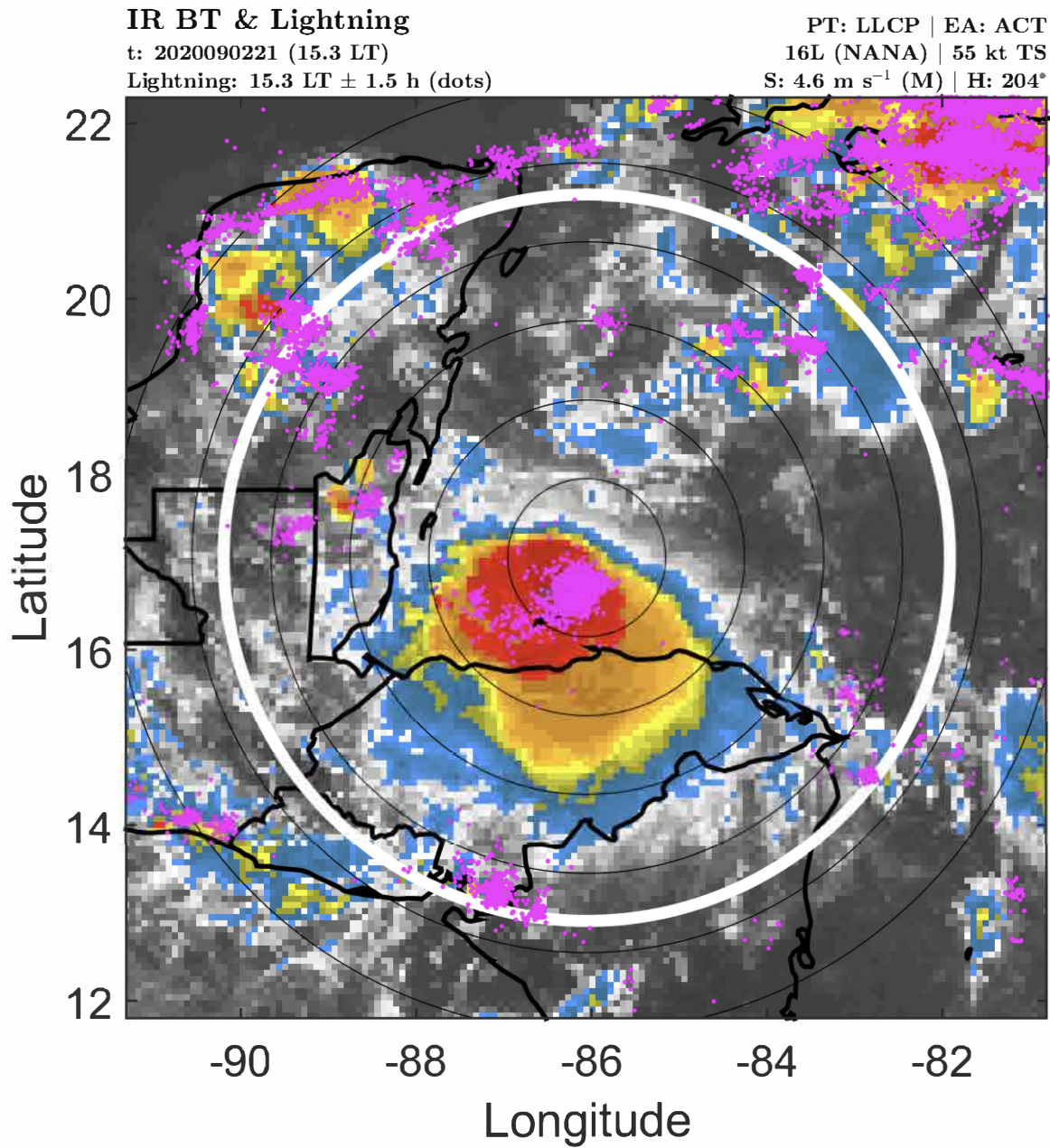
Lightning: 12.3 LT \pm 1.5 h (dots)

PT: LLCP | EA: ACT

16L (NANA) | 50 kt TS

S: 4.8 m s⁻¹ (M) | H: 205°





IR BT & Lightning

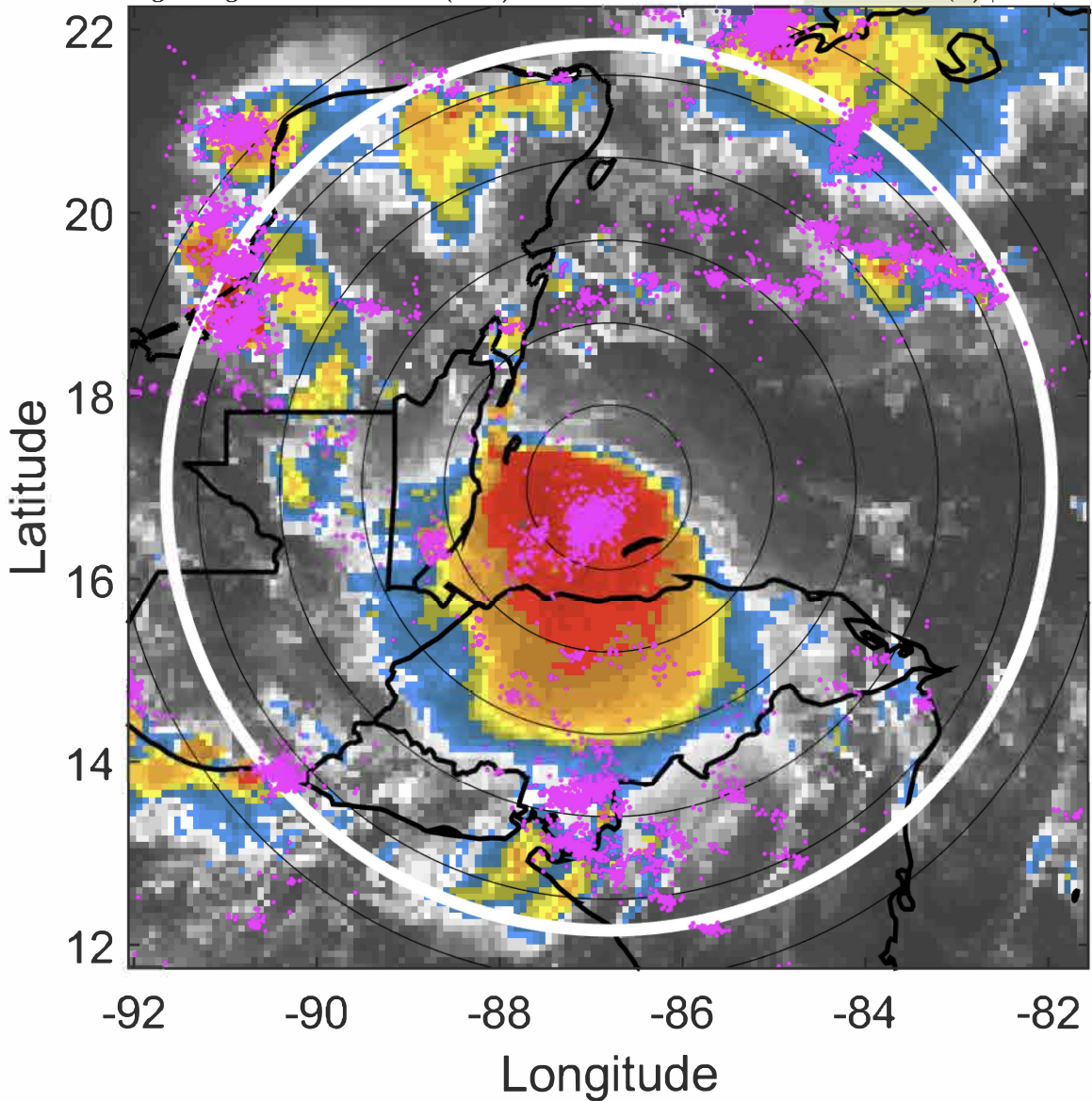
t: 2020090300 (18.2 LT)

Lightning: 18.2 LT \pm 1.5 h (dots)

PT: LLCP | EA: ACT

16L (NANA) | 60 kt TS

S: 4.3 m s⁻¹ (L) | H: 203°



6-h IR BT Differences & Lightning

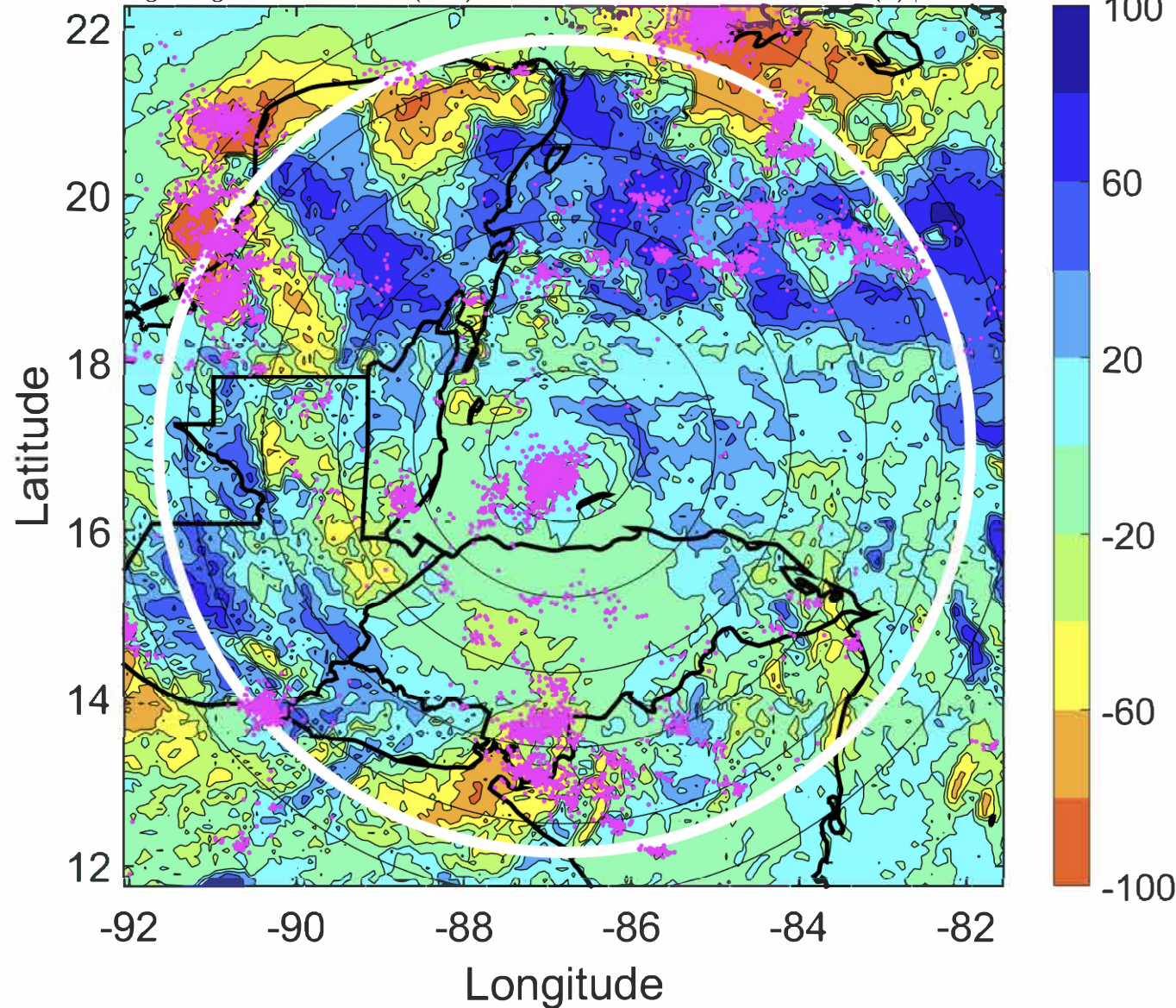
Δ t: 2020090300 (18.2 LT) - 2020090218 (12.3 LT)

Lightning: 18.2 LT \pm 1.5 h (dots)

PT: LLCP | EA: ACT

16L (NANA) | 60 kt TS

S: 4.3 m s⁻¹ (L) | H: 203°



IR BT & Lightning

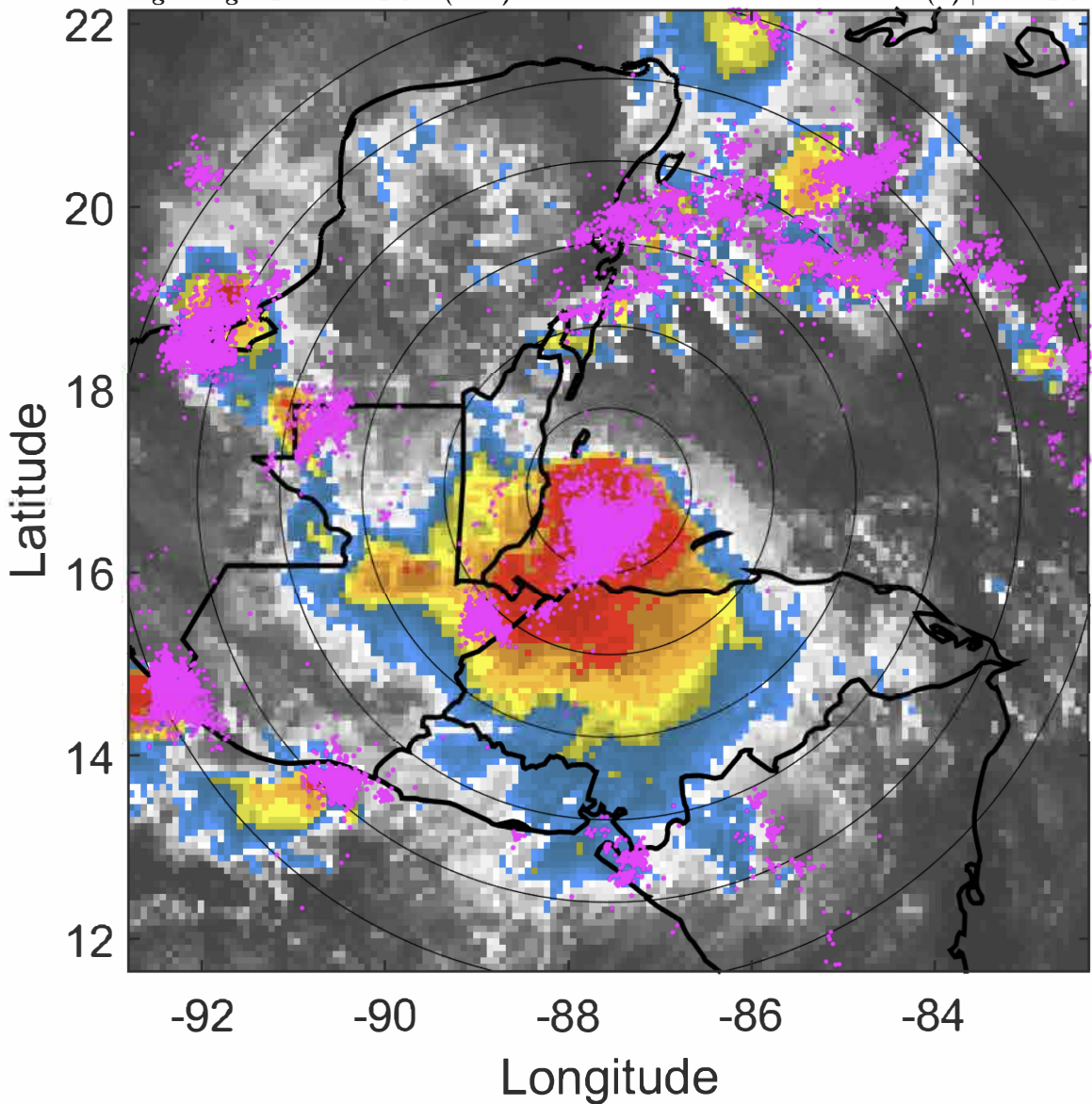
t: 2020090303 (21.2 LT)

Lightning: 21.2 LT \pm 1.5 h (dots)

PT: LLCP | EA: ACT

16L (NANA) | 62.5 kt TS

S: 4.2 m s⁻¹ (L) | H: 201.5°



6-h IR BT Differences & Lightning

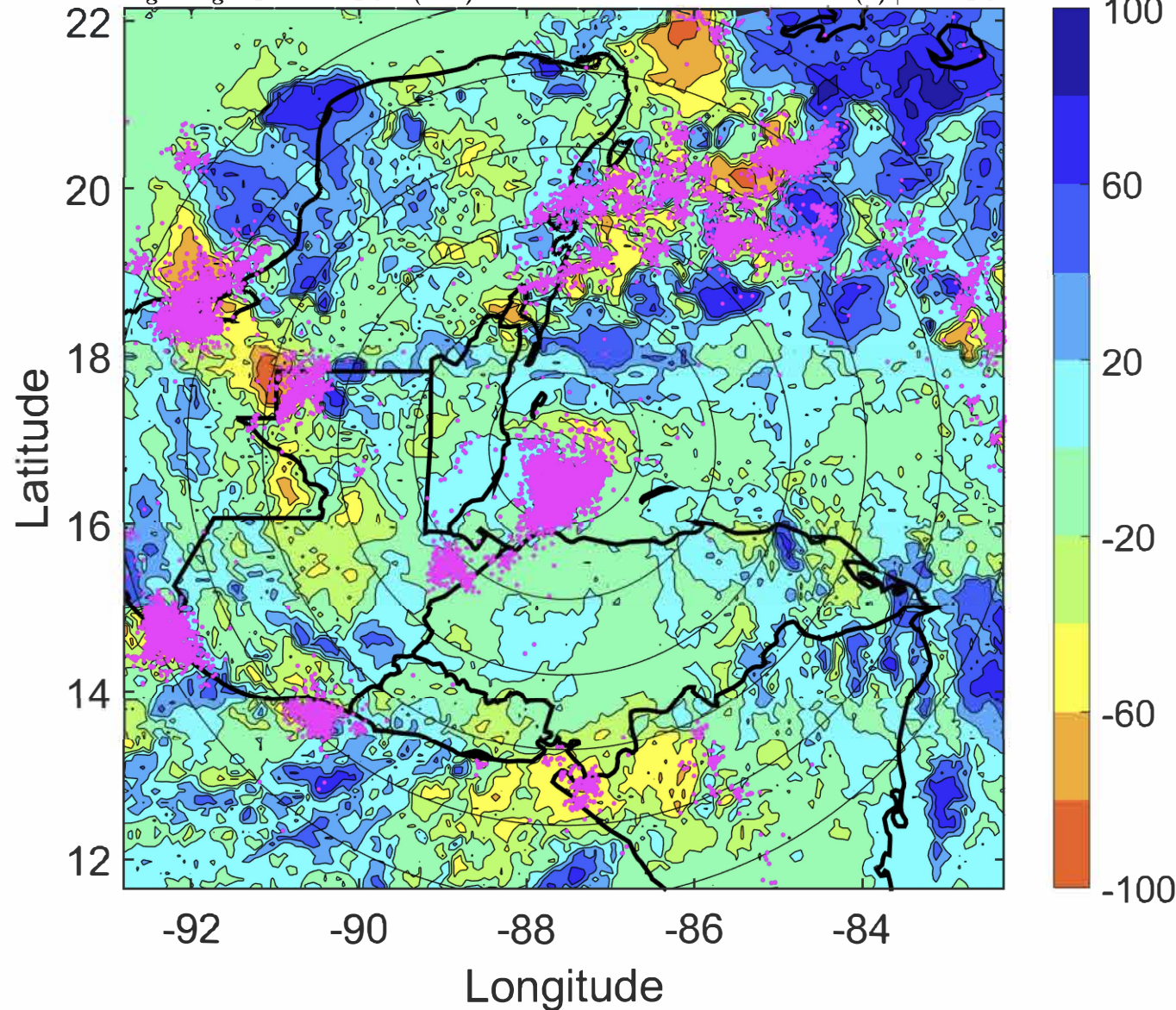
Δ t: 2020090303 (21.2 LT) - 2020090221 (15.3 LT)

Lightning: 21.2 LT \pm 1.5 h (dots)

PT: LLCP | EA: ACT

16L (NANA) | 62.5 kt TS

S: 4.2 m s⁻¹ (L) | H: 201.5°



IR BT & Lightning

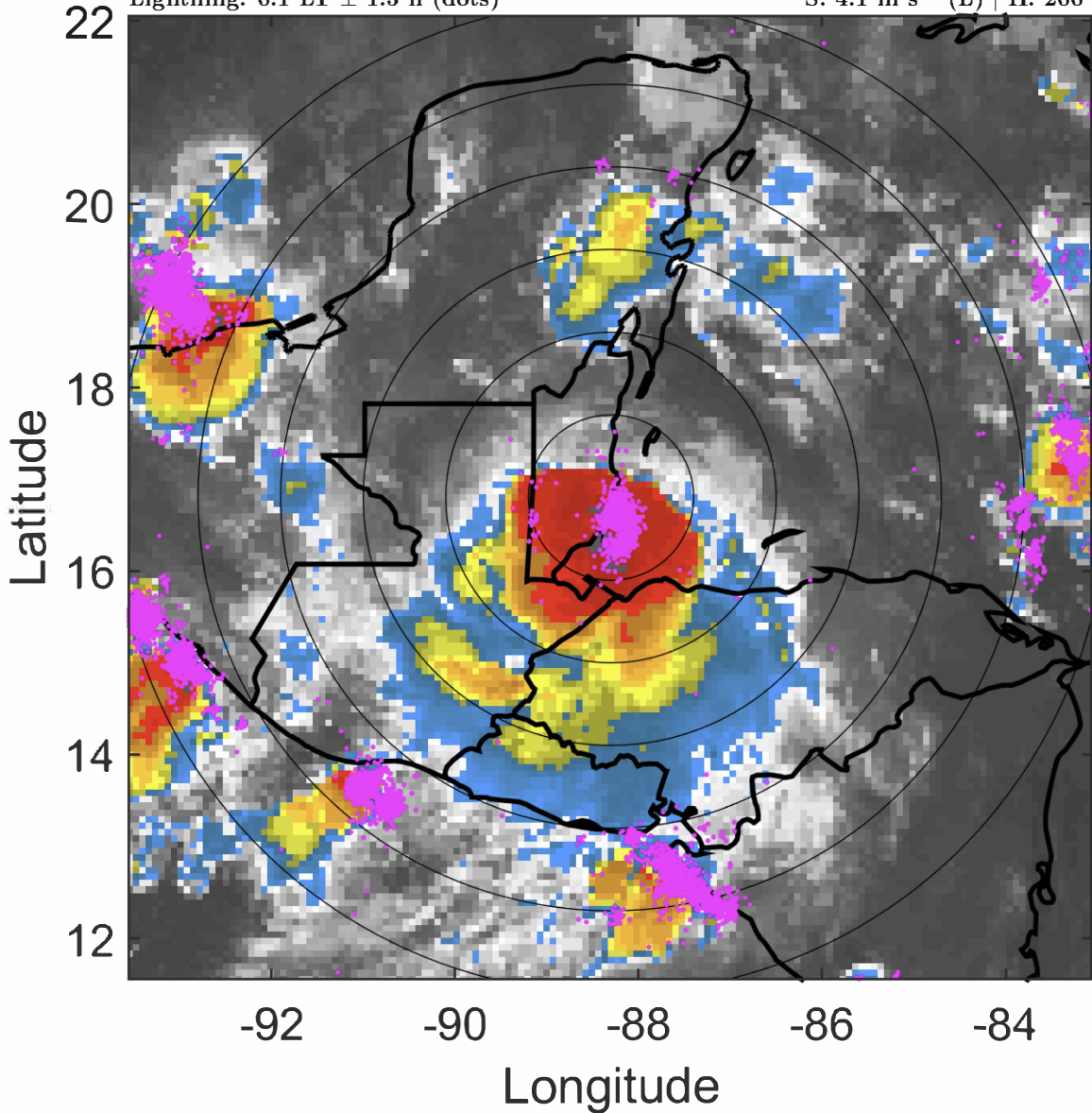
t: 2020090306 (0.1 LT)

Lightning: 0.1 LT \pm 1.5 h (dots)

LAND EFFECTS

16L (NANA) | 65 kt C1

S: 4.1 m s⁻¹ (L) | H: 200°



6-h IR BT Differences & Lightning

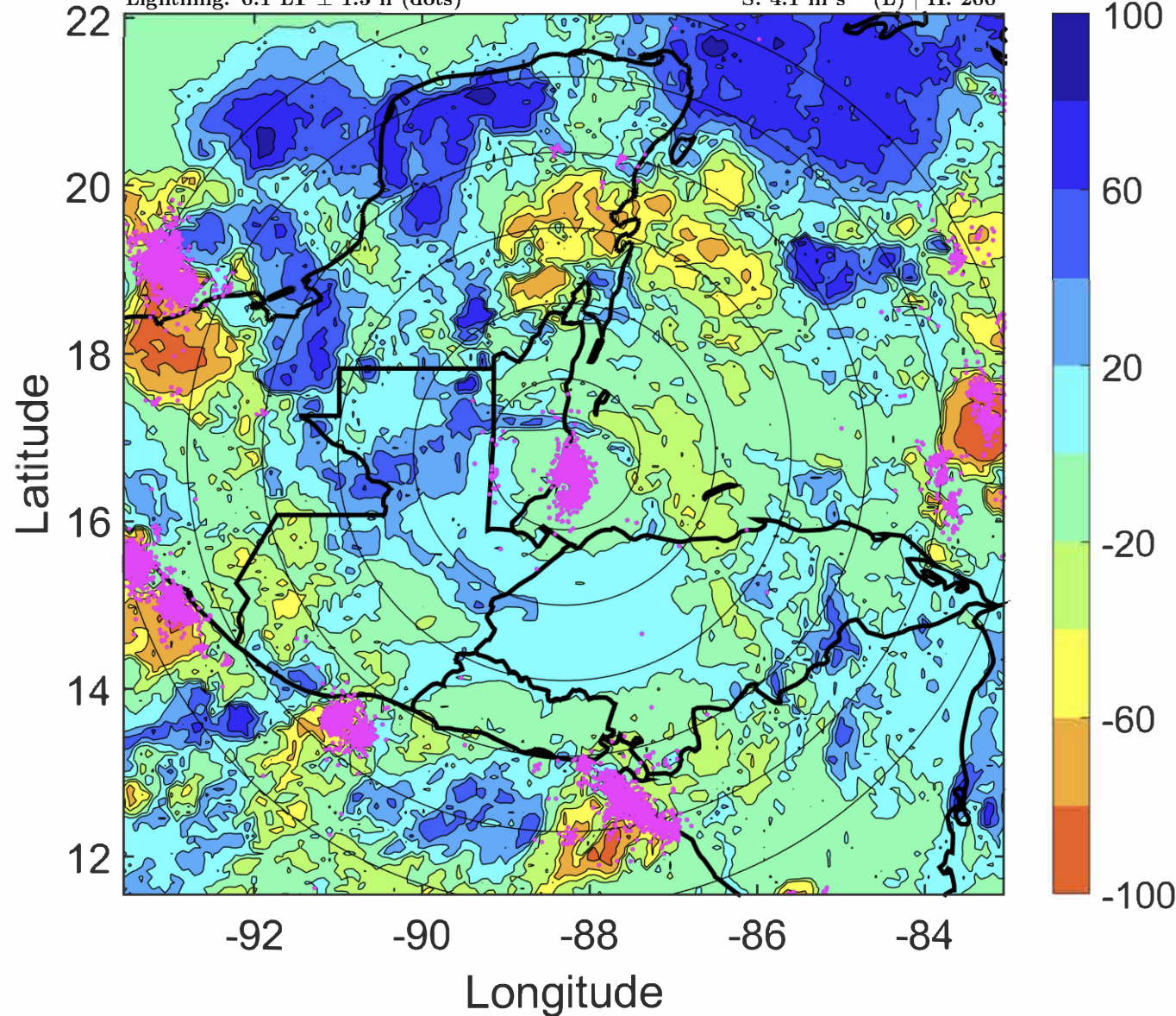
Δ t: 2020090306 (0.1 LT) - 2020090300 (18.2 LT)

Lightning: 0.1 LT \pm 1.5 h (dots)

LAND EFFECTS

16L (NANA) | 65 kt C1

S: 4.1 m s⁻¹ (L) | H: 200°



IR BT & Lightning

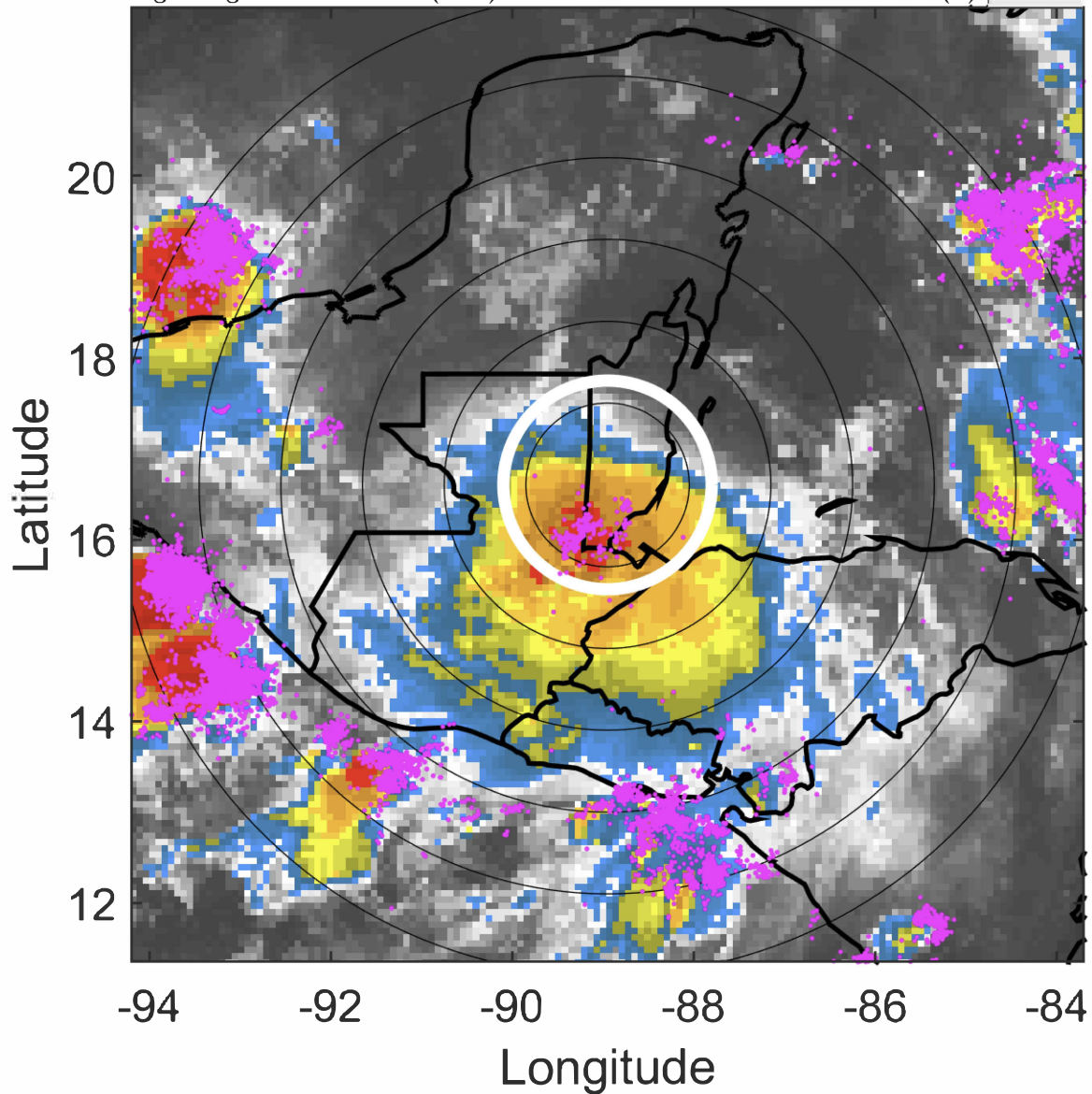
t: 2020090309 (3.1 LT)

Lightning: 3.1 LT \pm 1.5 h (dots)

LAND EFFECTS

16L (NANA) | 55 kt TS

S: 4 m s⁻¹ (L) | H: 207*



6-h IR BT Differences & Lightning

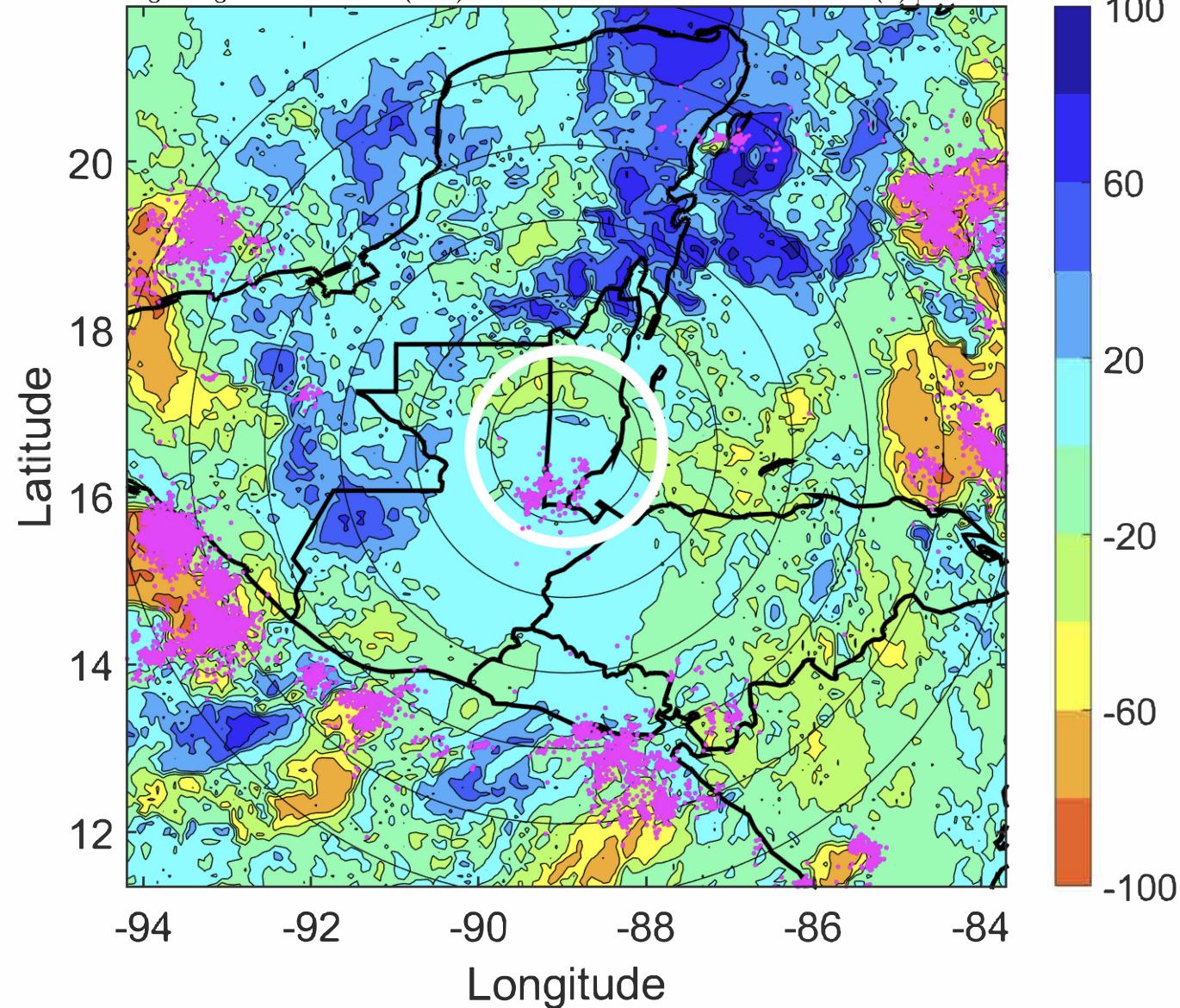
Δ t: 2020090309 (3.1 LT) - 2020090303 (21.2 LT)

Lightning: 3.1 LT \pm 1.5 h (dots)

LAND EFFECTS

16L (NANA) | 55 kt TS

S: 4 m s⁻¹ (L) | H: 207*



IR BT & Lightning

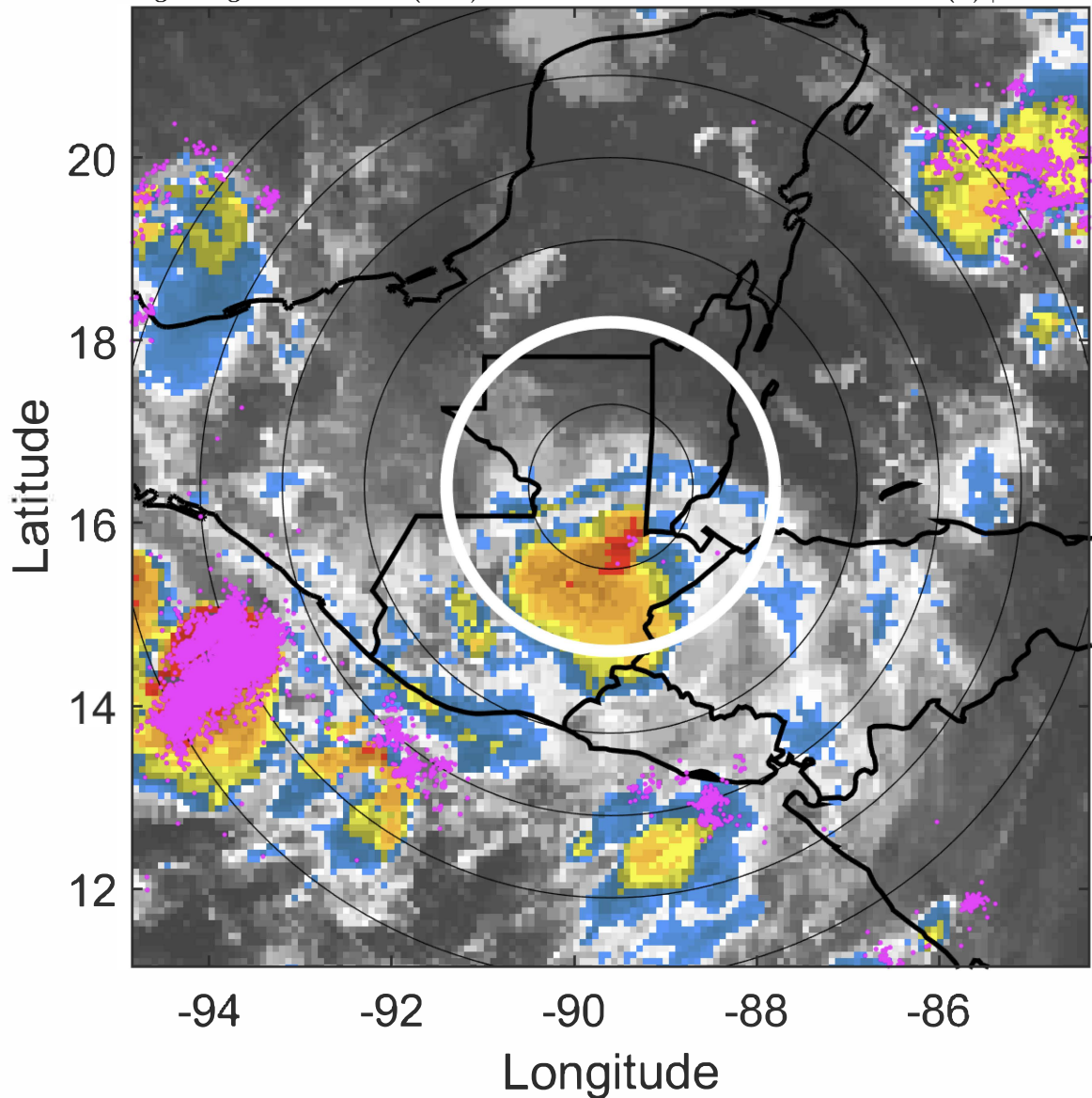
t: 2020090312 (6 LT)

Lightning: 6 LT \pm 1.5 h (dots)

LAND EFFECTS

16L (NANA) | 45 kt TS

S: 3.9 m s⁻¹ (L) | H: 214°



6-h IR BT Differences & Lightning

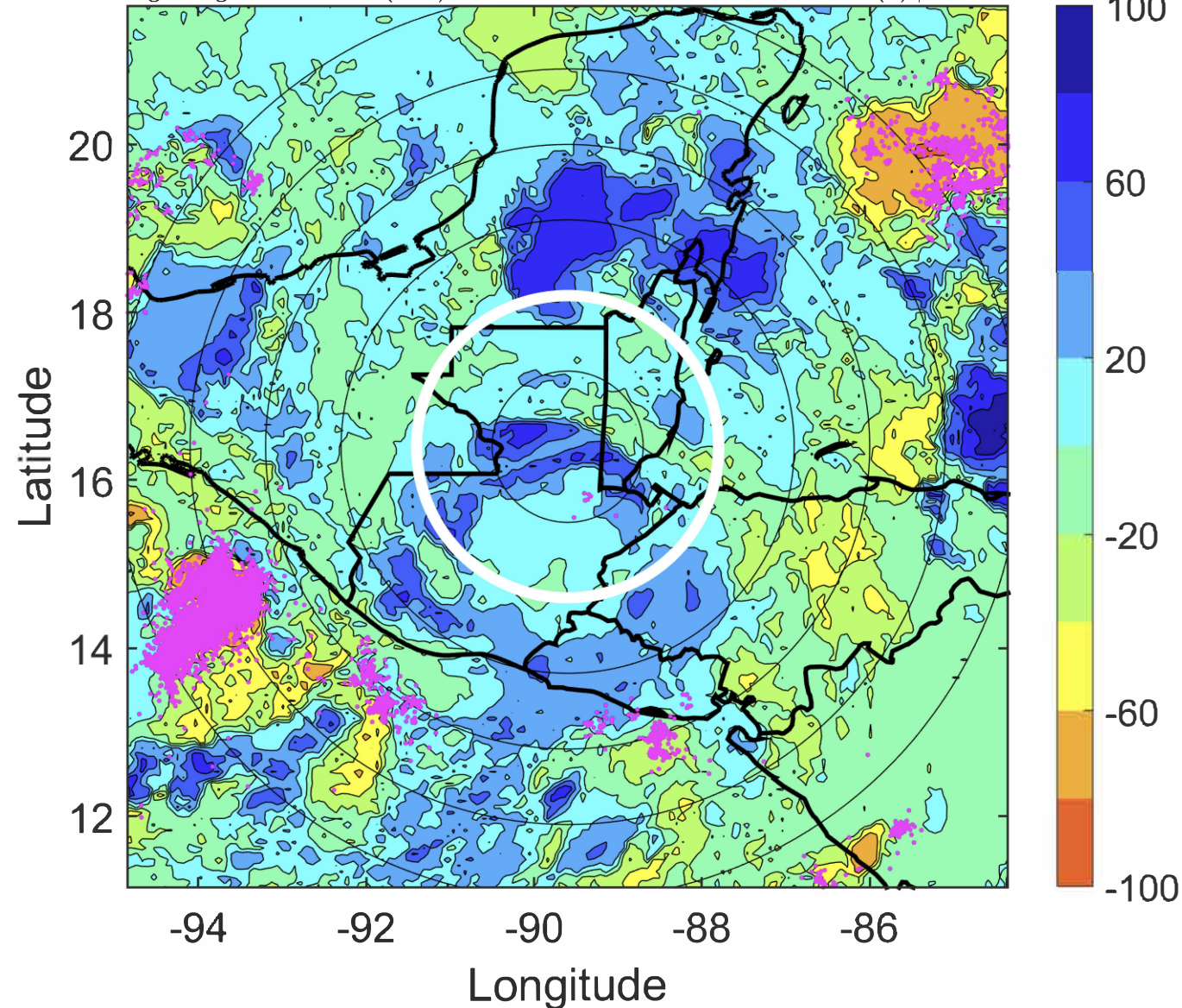
Δ t: 2020090312 (6 LT) - 2020090306 (0.1 LT)

Lightning: 6 LT \pm 1.5 h (dots)

LAND EFFECTS

16L (NANA) | 45 kt TS

S: 3.9 m s⁻¹ (L) | H: 214°



IR BT & Lightning

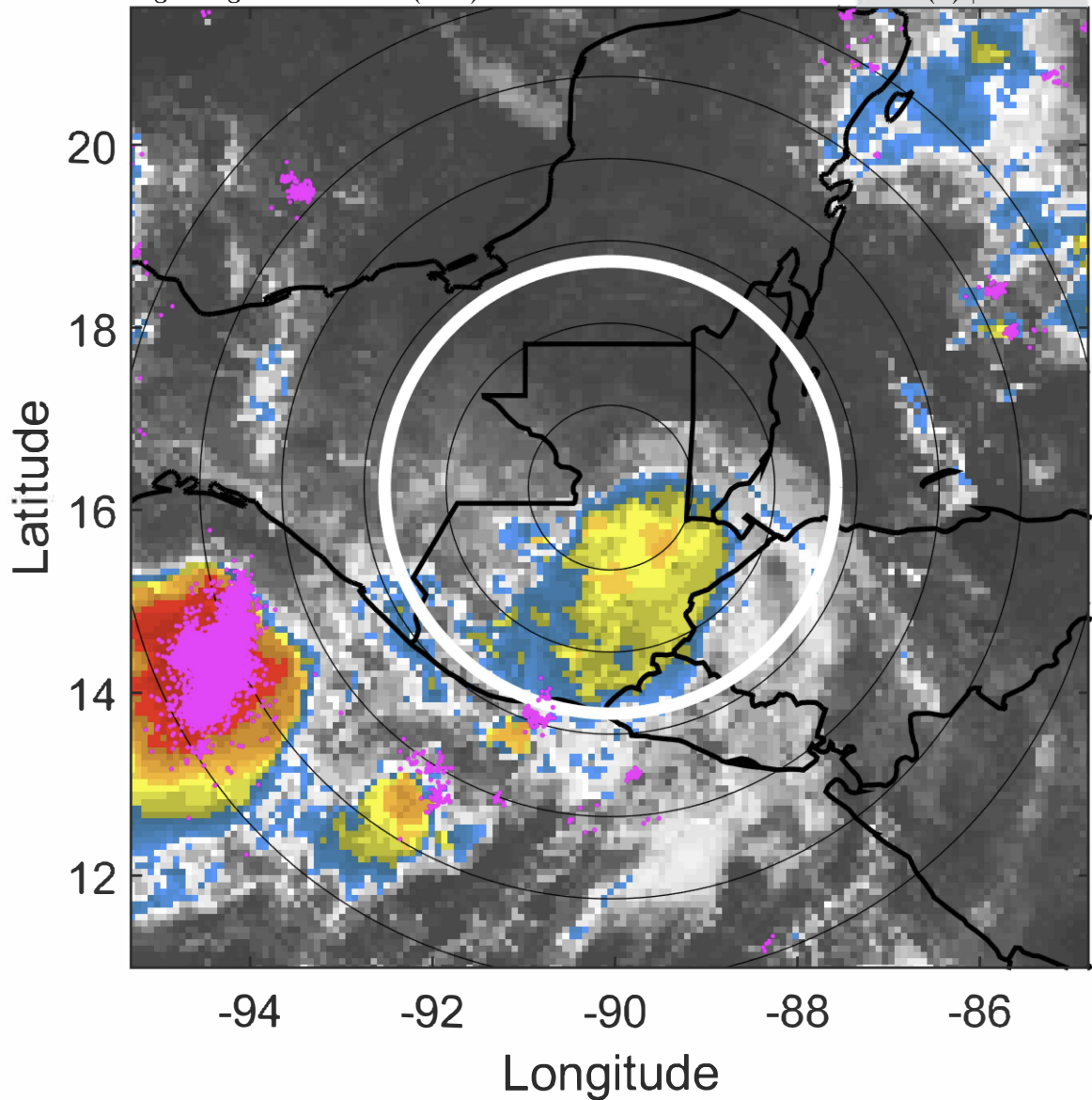
t: 2020090315 (9 LT)

Lightning: 9 LT \pm 1.5 h (dots)

LAND EFFECTS

16L (NANA) | 37.5 kt TS

S: 3.7 m s⁻¹ (L) | H: 222.5°



6-h IR BT Differences & Lightning

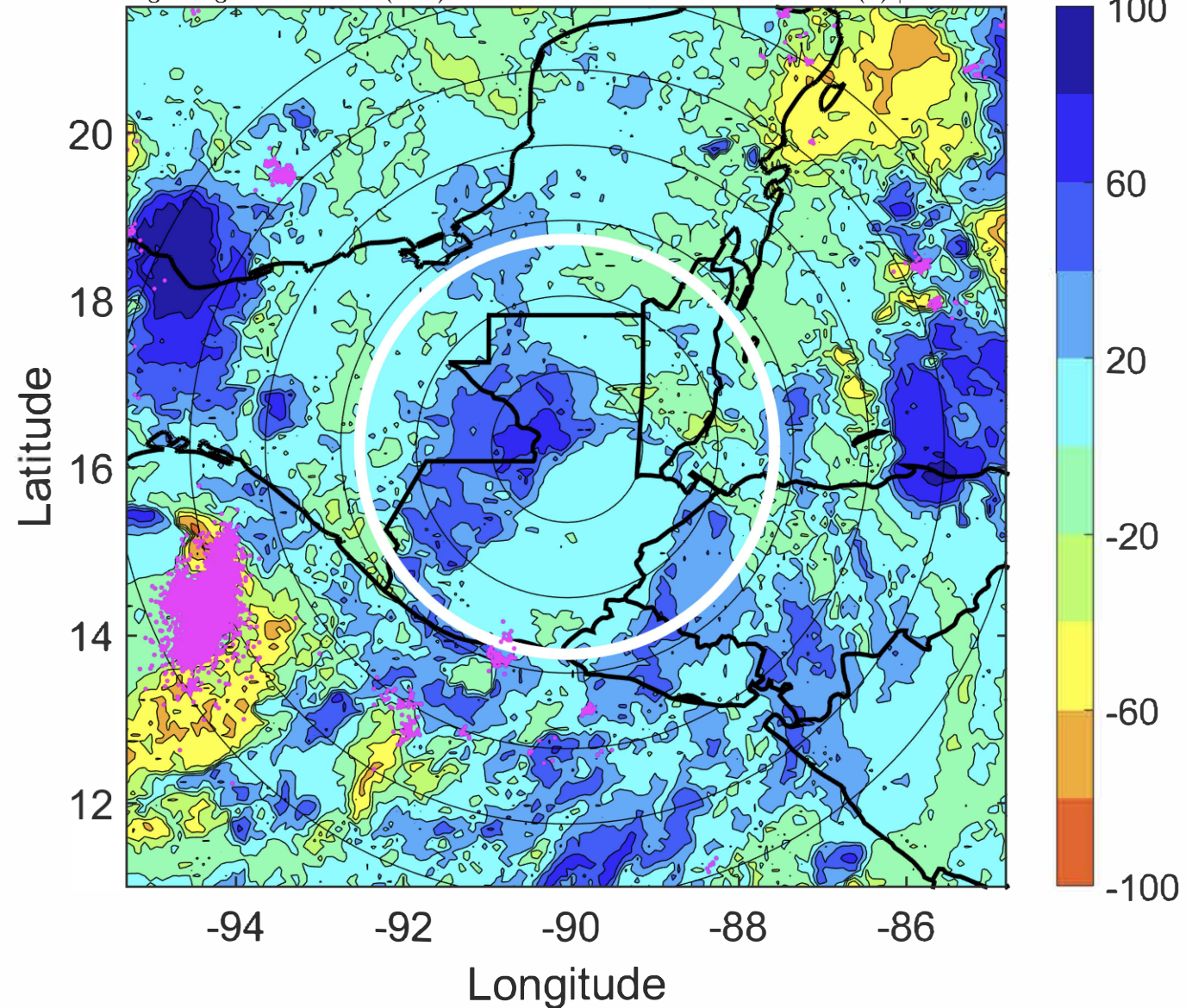
Δ t: 2020090315 (9 LT) - 2020090309 (3.1 LT)

Lightning: 9 LT \pm 1.5 h (dots)

LAND EFFECTS

16L (NANA) | 37.5 kt TS

S: 3.7 m s⁻¹ (L) | H: 222.5°



IR BT & Lightning

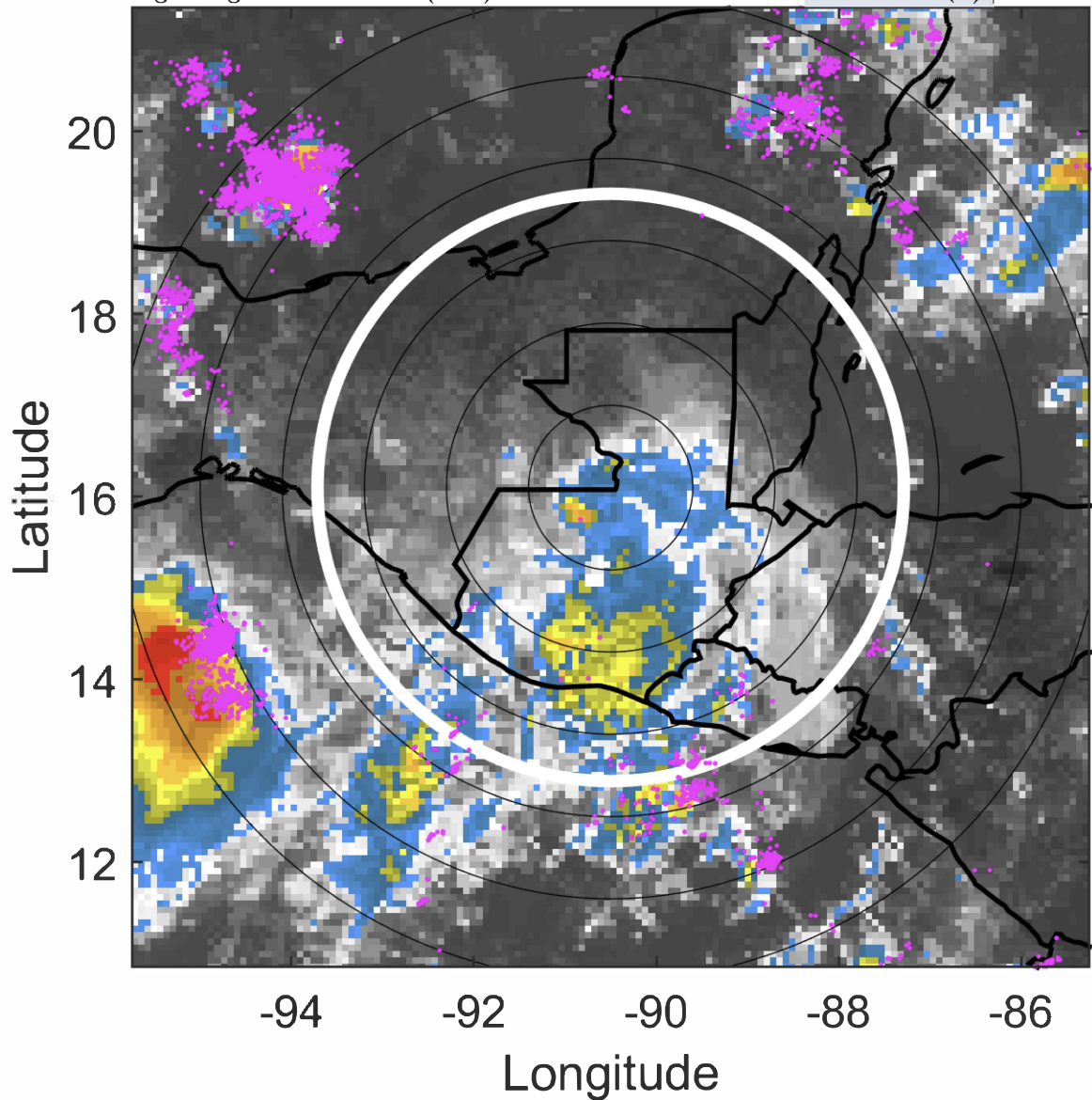
t: 2020090318 (12 LT)

Lightning: 12 LT \pm 1.5 h (dots)

LAND EFFECTS

16L (NANA) | 30 kt TD

S: 3.4 m s⁻¹ (L) | H: 231°



6-h IR BT Differences & Lightning

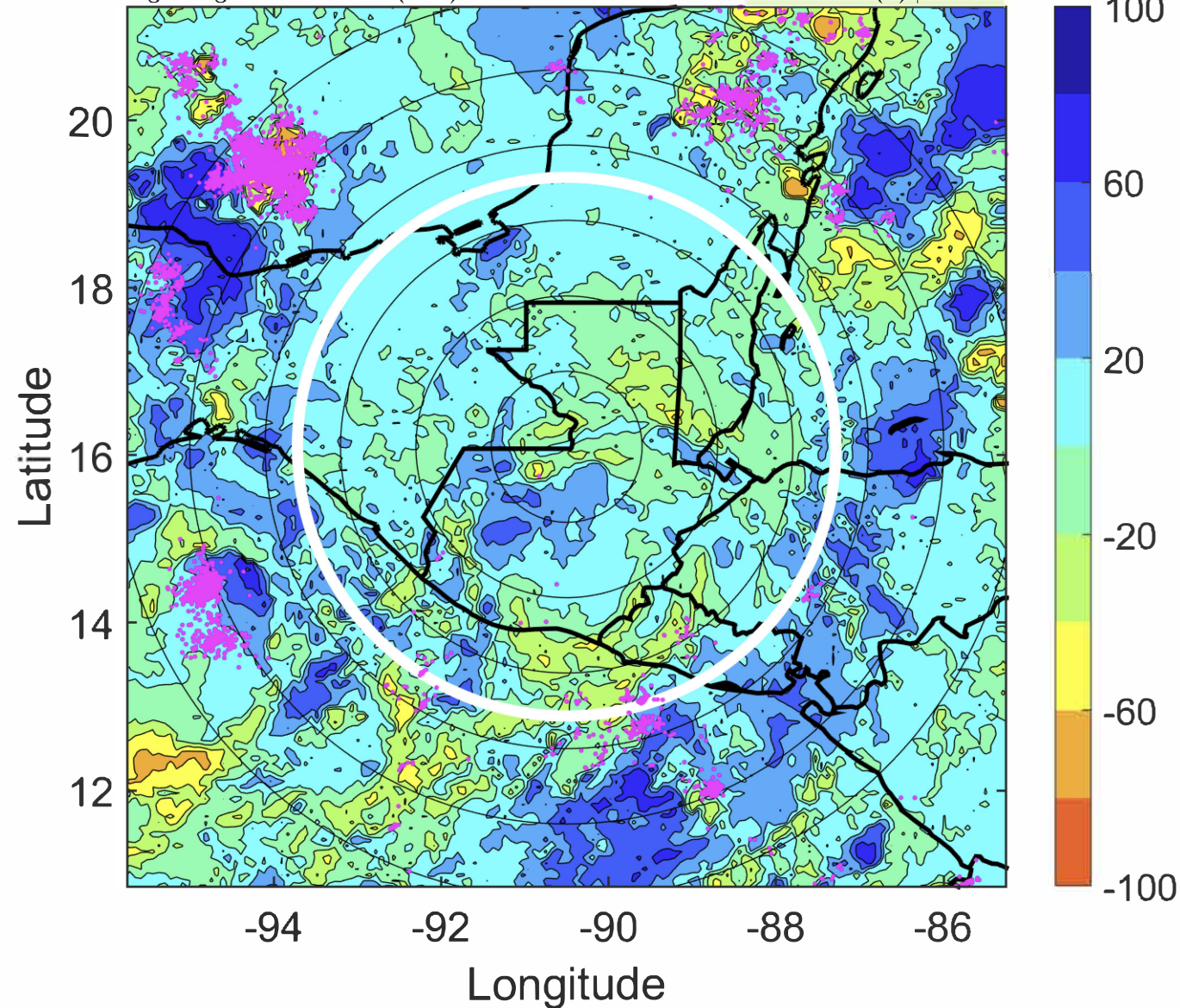
Δ t: 2020090318 (12 LT) - 2020090312 (6 LT)

Lightning: 12 LT \pm 1.5 h (dots)

LAND EFFECTS

16L (NANA) | 30 kt TD

S: 3.4 m s⁻¹ (L) | H: 231°



IR BT & Lightning

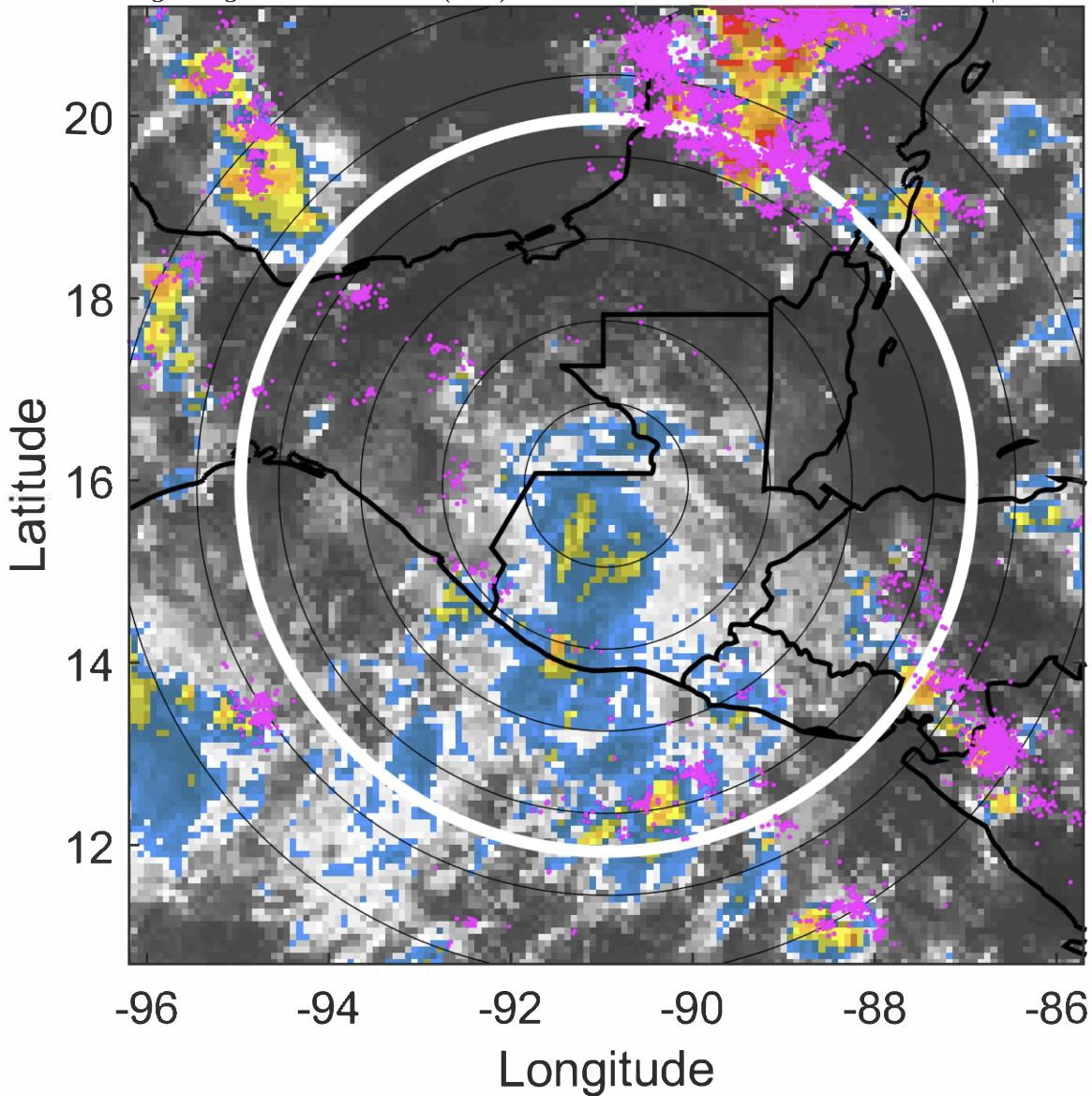
t: 2020090321 (14.9 LT)

Lightning: 14.9 LT \pm 1.5 h (dots)

LAND EFFECTS

16L (NANA) | 25 kt TD

S: null | H: null



6-h IR BT Differences & Lightning

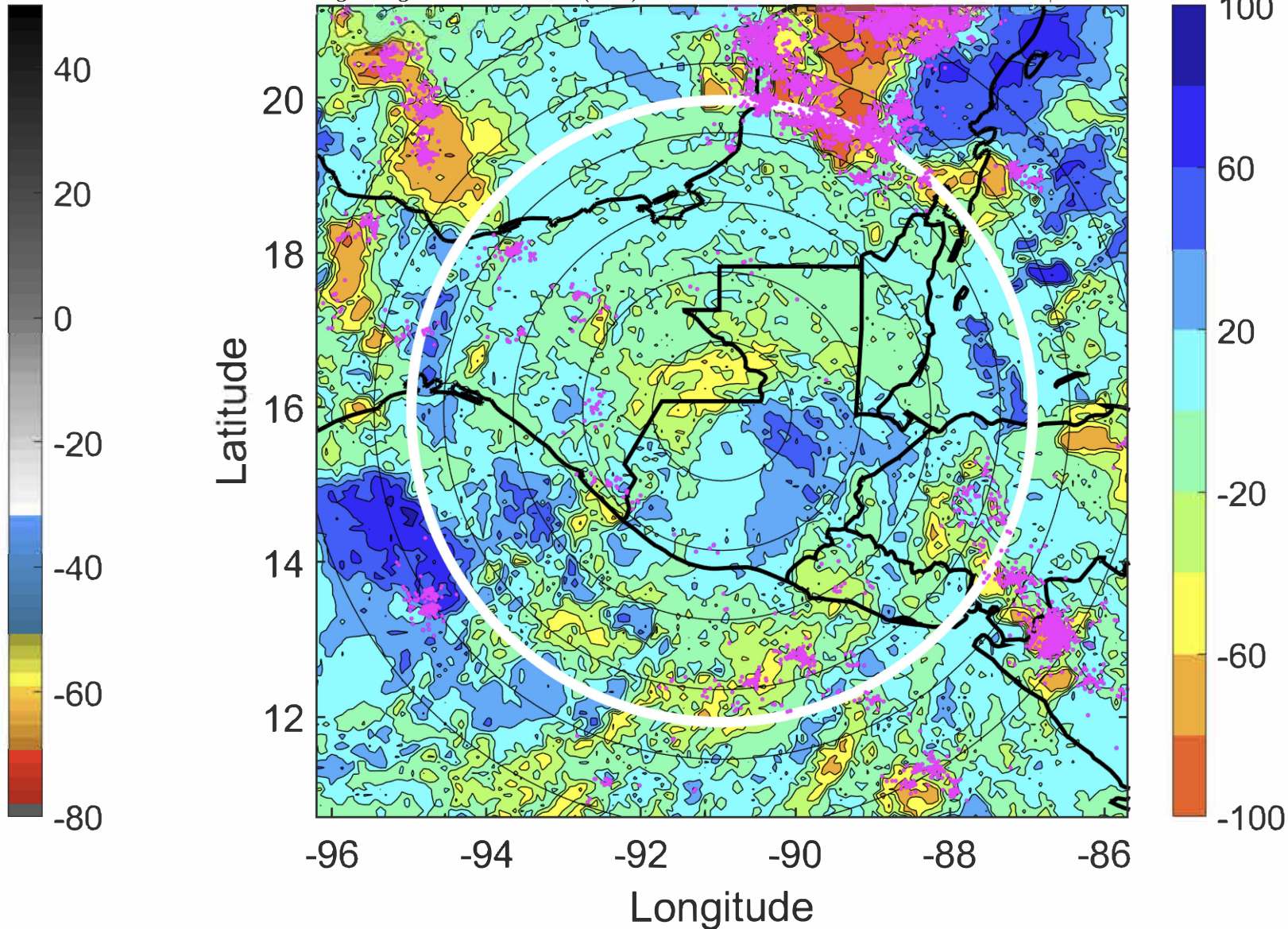
Δ t: 2020090321 (14.9 LT) - 2020090315 (9 LT)

Lightning: 14.9 LT \pm 1.5 h (dots)

LAND EFFECTS

16L (NANA) | 25 kt TD

S: null | H: null



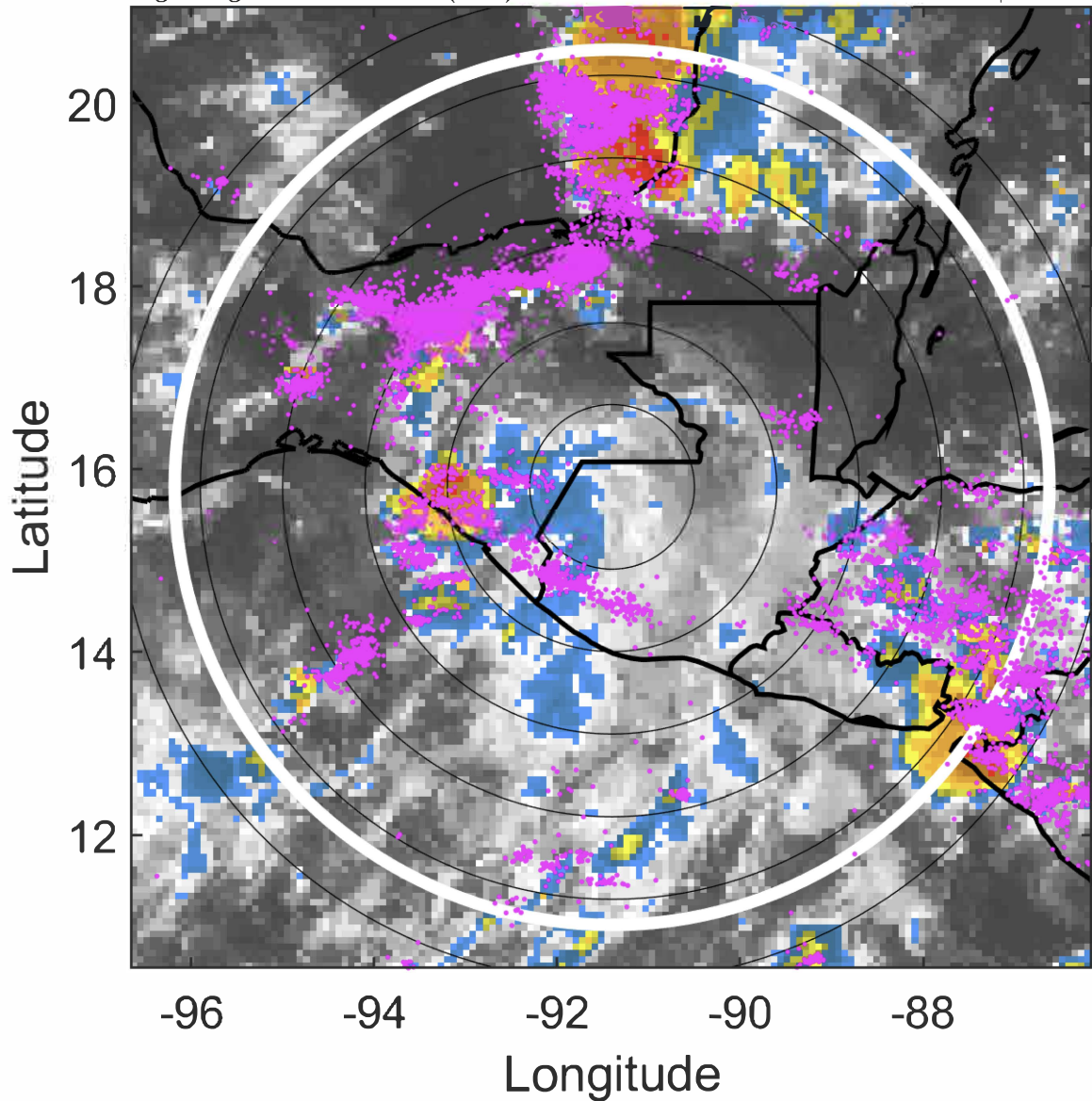
IR BT & Lightning

t: 2020090400 (17.9 LT)

Lightning: 17.9 LT \pm 1.5 h (dots)

LAND EFFECTS
16L (NANA) | 20 kt LO

S: null | H: null



6-h IR BT Differences & Lightning

Δ t: 2020090400 (17.9 LT) - 2020090318 (12 LT)

Lightning: 17.9 LT \pm 1.5 h (dots)

LAND EFFECTS
16L (NANA) | 20 kt LO

S: null | H: null

