

### IR BT & Lightning

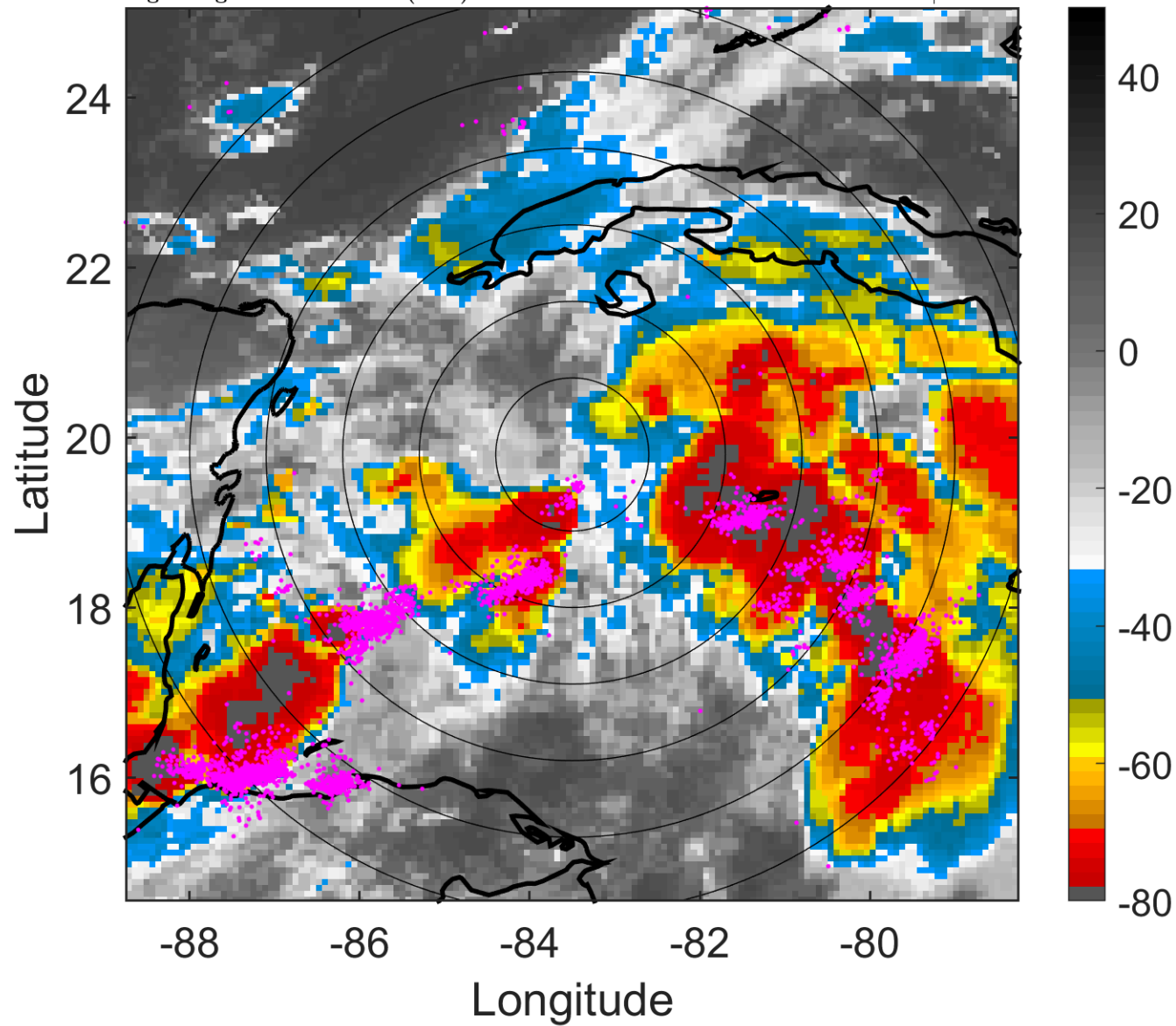
t: 2010092806 (0.4 LT)

Lightning: 0.4 LT  $\pm$  1.5 h (dots)

PT: LLCP | EA: ACT

16L (NICOLE) | 30 kt LO

S: null | H: null



### 6-h IR BT Differences & Lightning

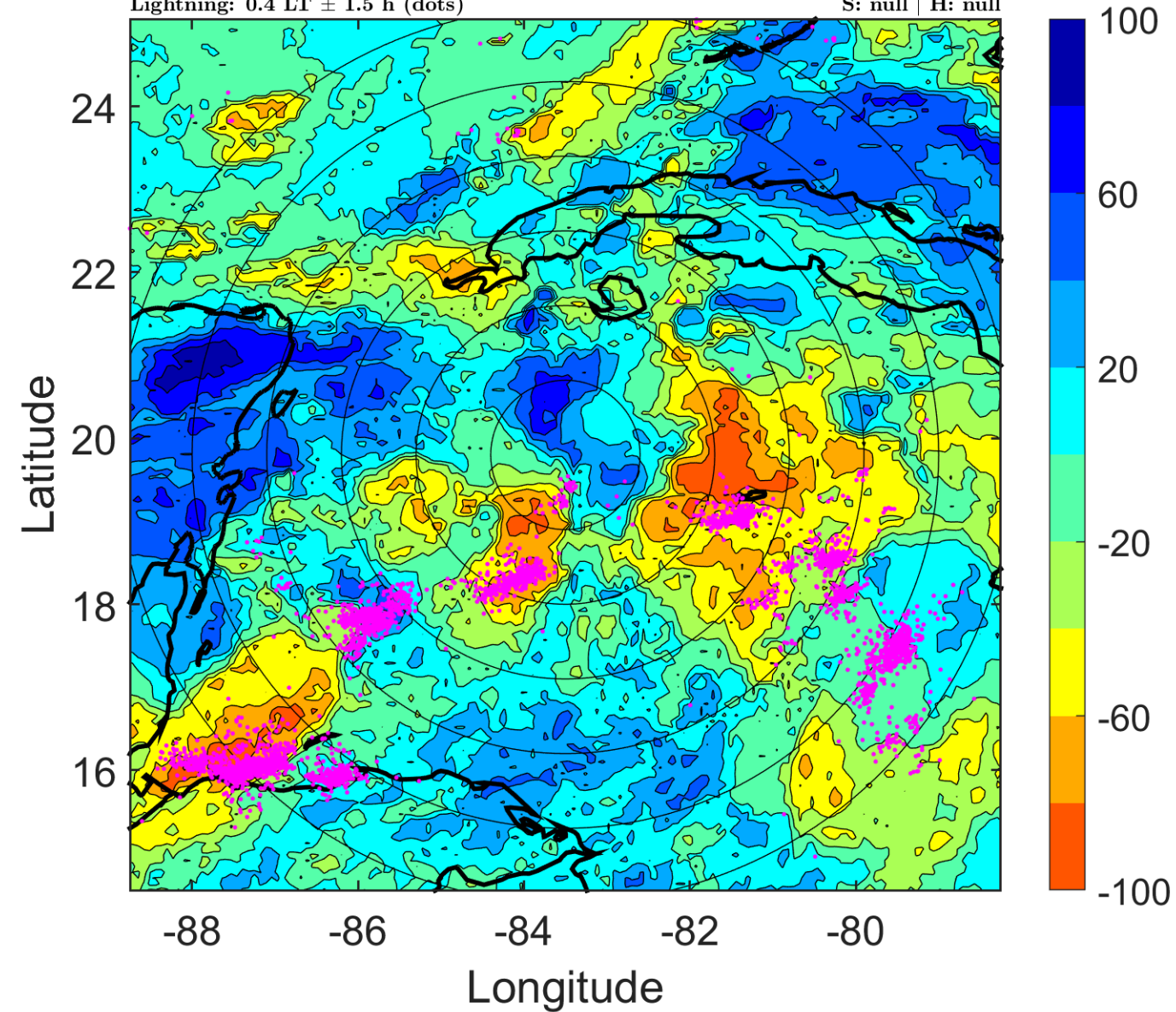
$\Delta$ t: 2010092806 (0.4 LT) - 2010092800 (18.4 LT)

Lightning: 0.4 LT  $\pm$  1.5 h (dots)

PT: LLCP | EA: ACT

16L (NICOLE) | 30 kt LO

S: null | H: null



### IR BT & Lightning

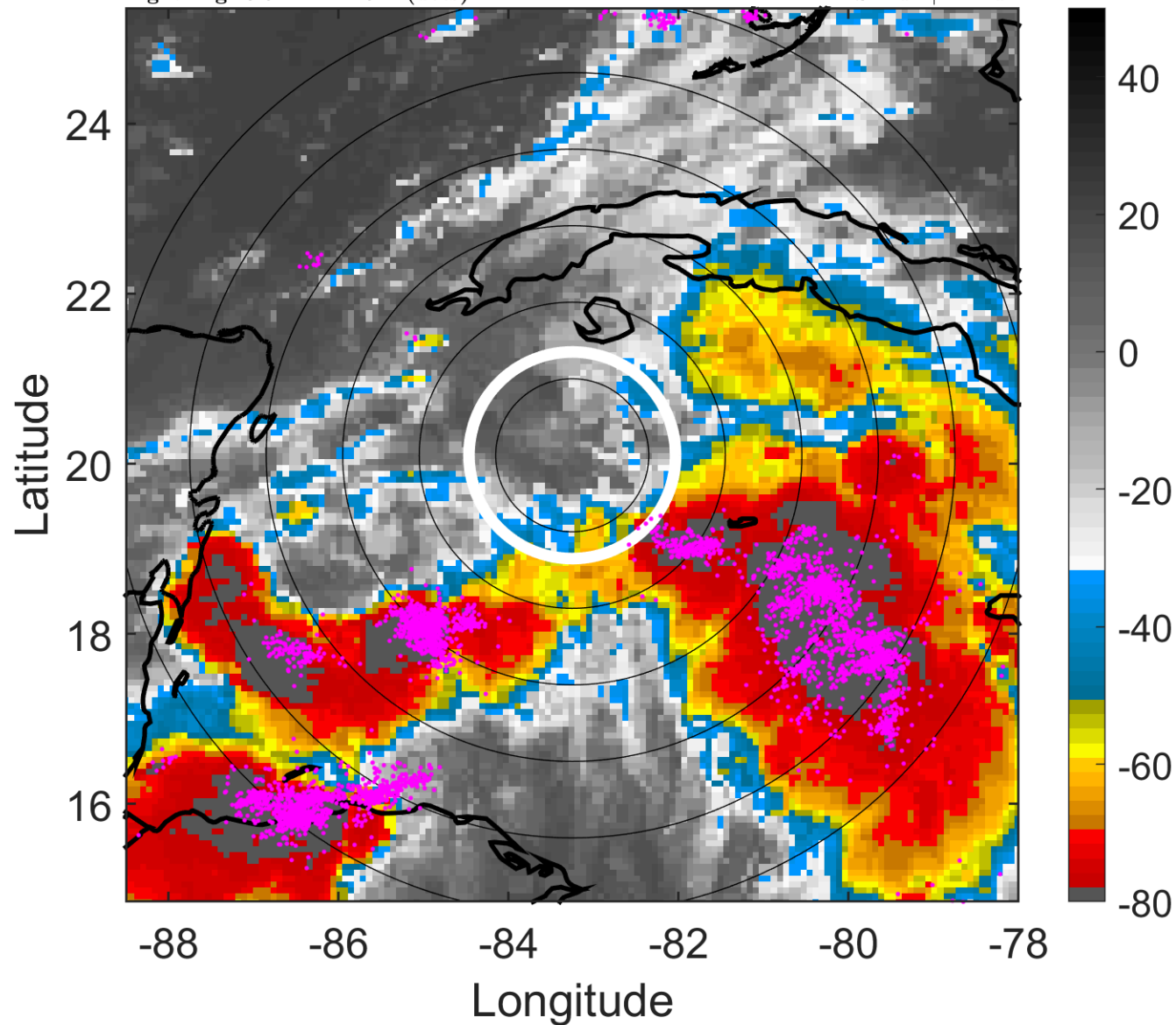
t: 2010092809 (3.5 LT)

Lightning: 3.5 LT  $\pm$  1.5 h (dots)

PT: LLCP | EA: ACT

16L (NICOLE) | 32.5 kt LO

S: null | H: null



### 6-h IR BT Differences & Lightning

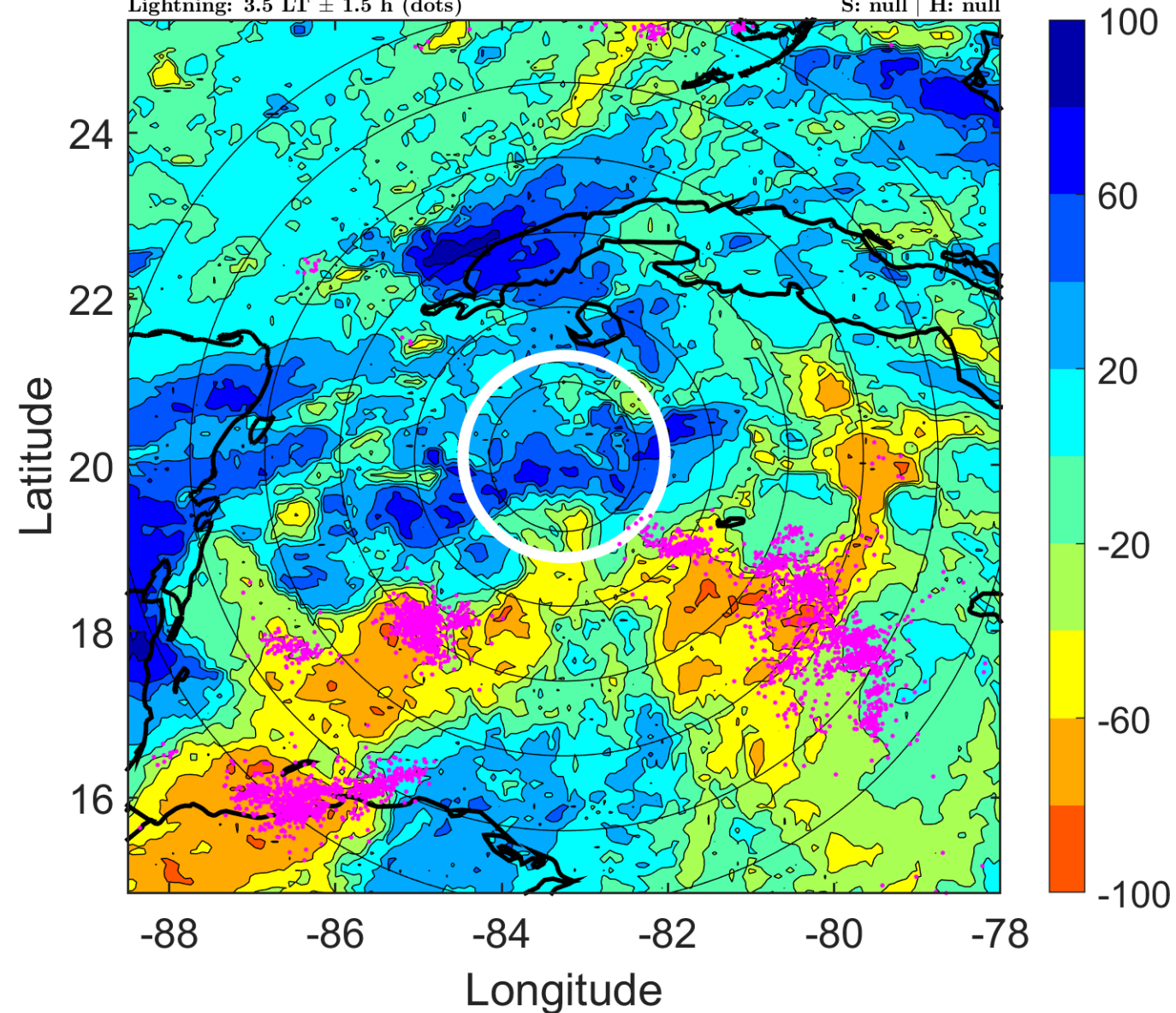
$\Delta$ t: 2010092809 (3.5 LT) - 2010092803 (21.4 LT)

Lightning: 3.5 LT  $\pm$  1.5 h (dots)

PT: LLCP | EA: ACT

16L (NICOLE) | 32.5 kt LO

S: null | H: null



### IR BT & Lightning

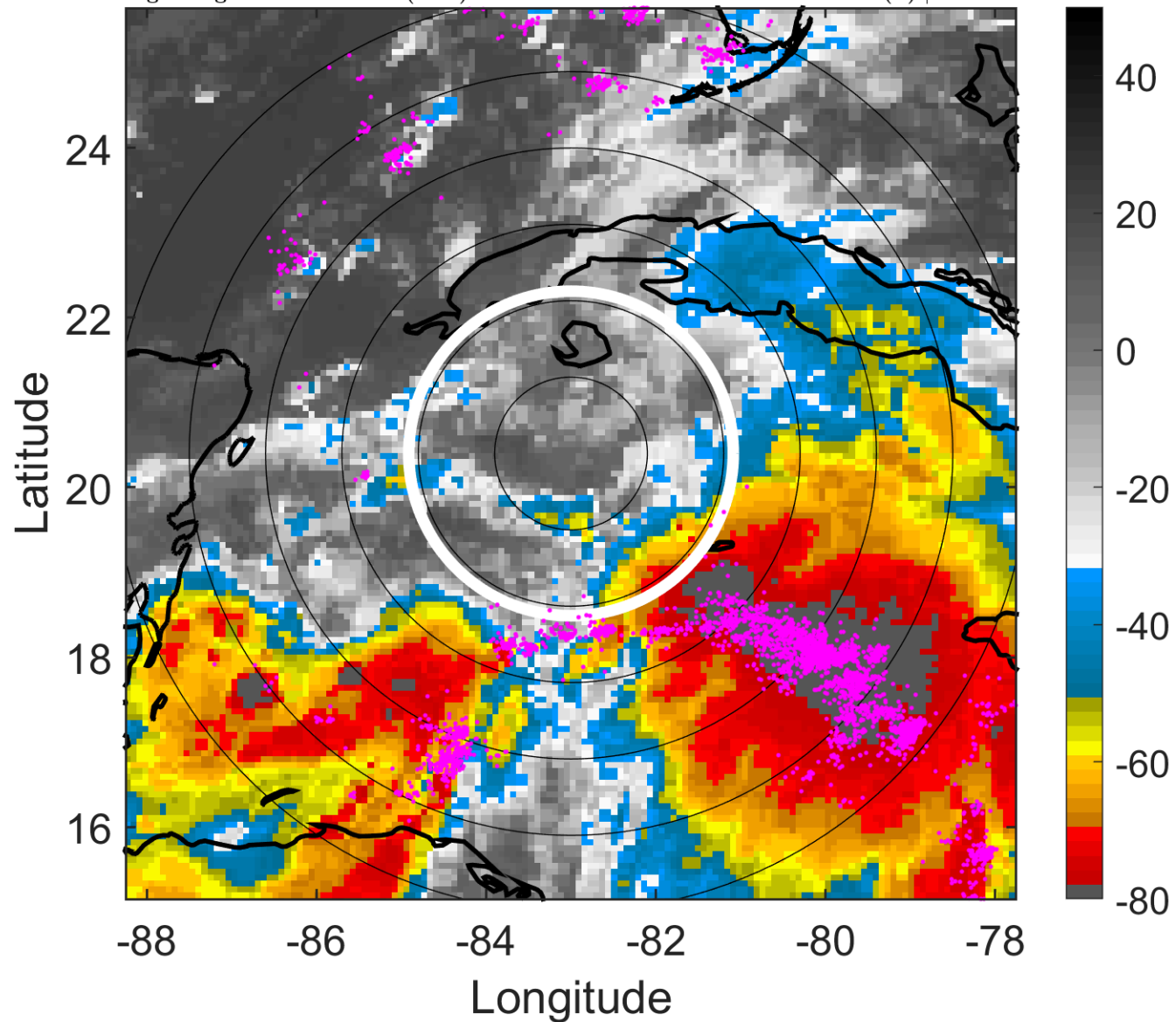
t: 2010092812 (6.5 LT)

Lightning: 6.5 LT  $\pm$  1.5 h (dots)

PT: LLCP | EA: ACT

16L (NICOLE) | 35 kt TS

S: 3.3 m s<sup>-1</sup> (L) | H: 108°



### 6-h IR BT Differences & Lightning

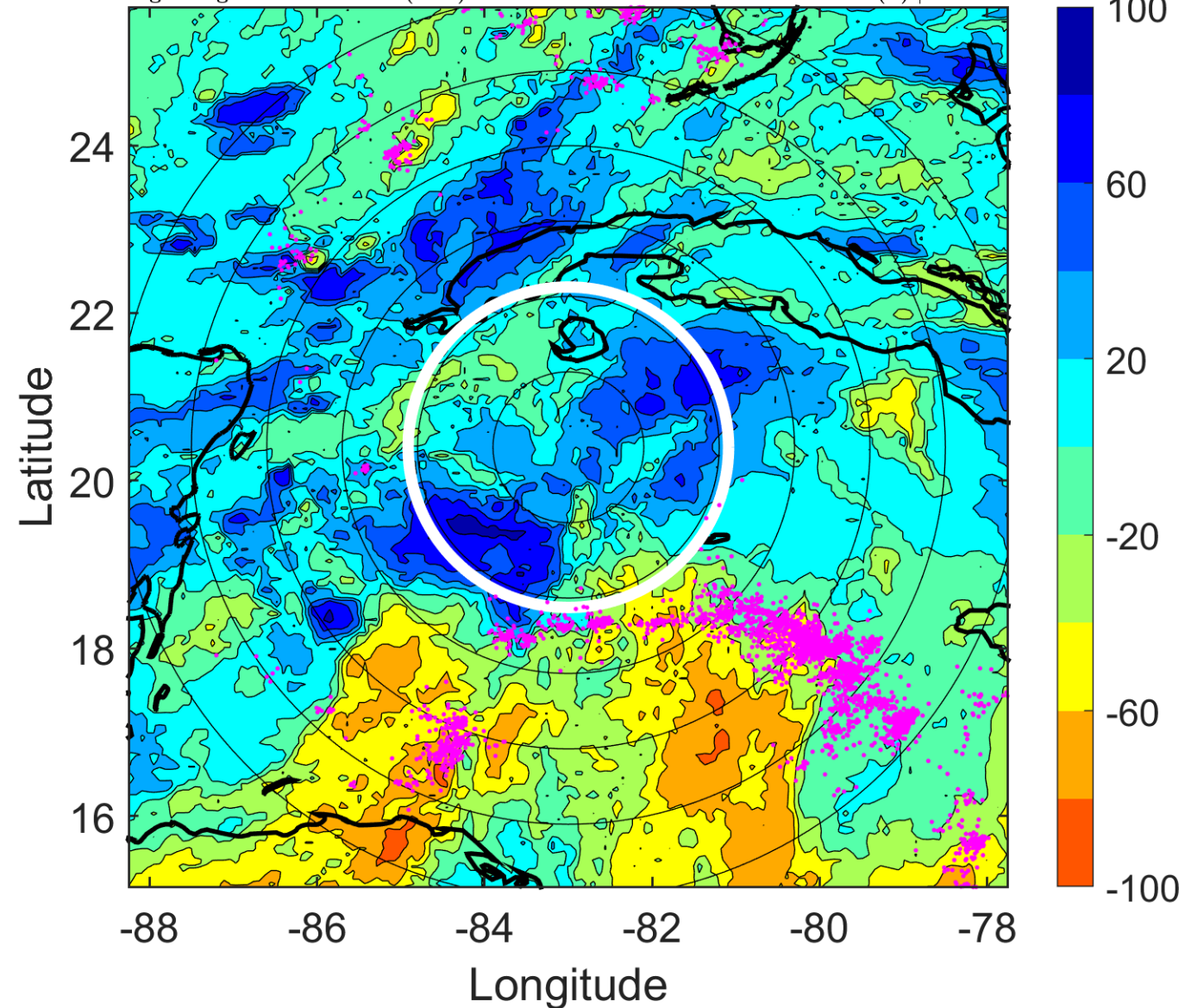
$\Delta$ t: 2010092812 (6.5 LT) - 2010092806 (0.4 LT)

Lightning: 6.5 LT  $\pm$  1.5 h (dots)

PT: LLCP | EA: ACT

16L (NICOLE) | 35 kt TS

S: 3.3 m s<sup>-1</sup> (L) | H: 108°



### IR BT & Lightning

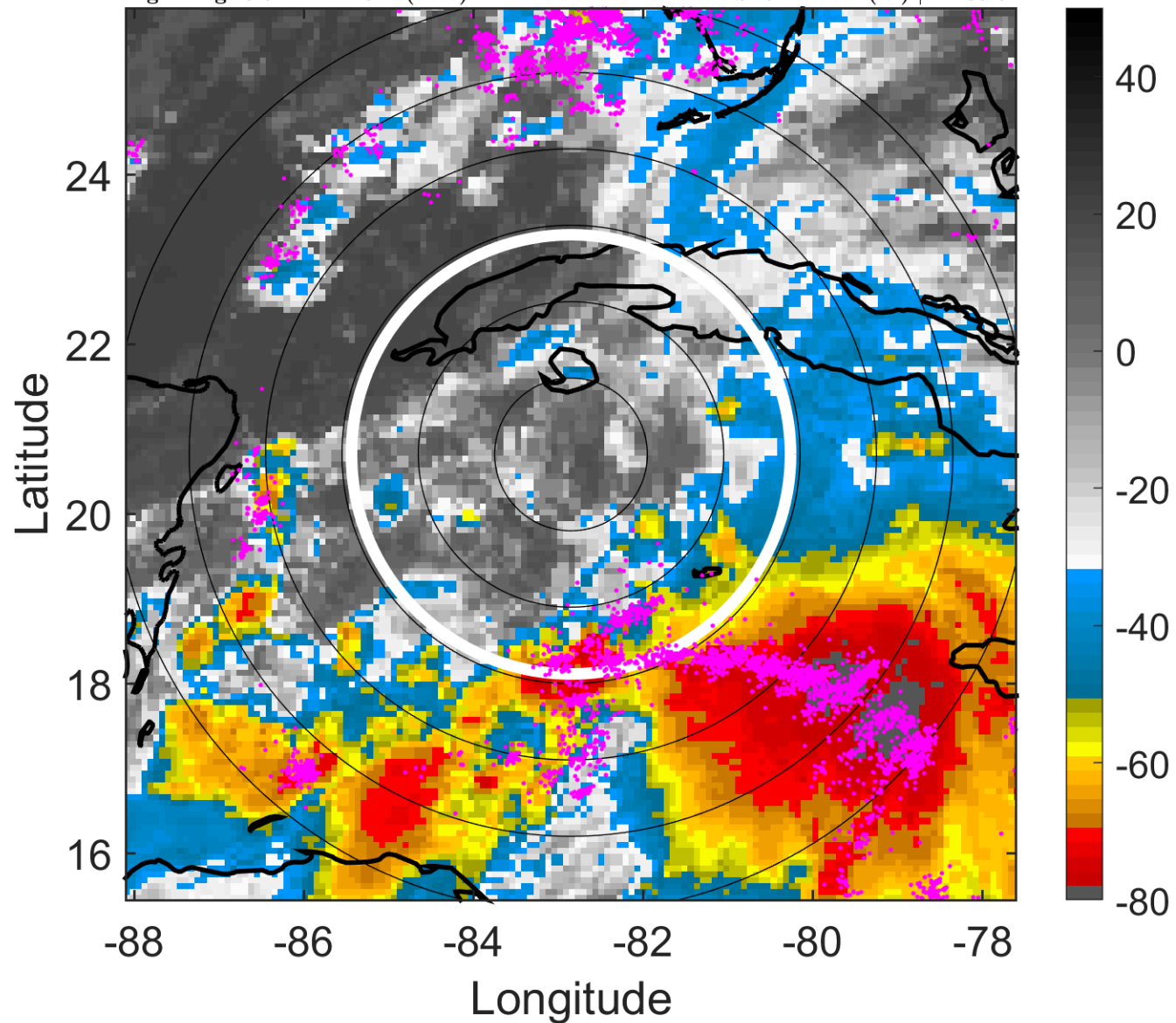
t: 2010092815 (9.5 LT)

Lightning: 9.5 LT  $\pm$  1.5 h (dots)

PT: LLCP | EA: ACT

16L (NICOLE) | 37.5 kt TS

S: 5.1 m s<sup>-1</sup> (M) | H: 88.5°



### 6-h IR BT Differences & Lightning

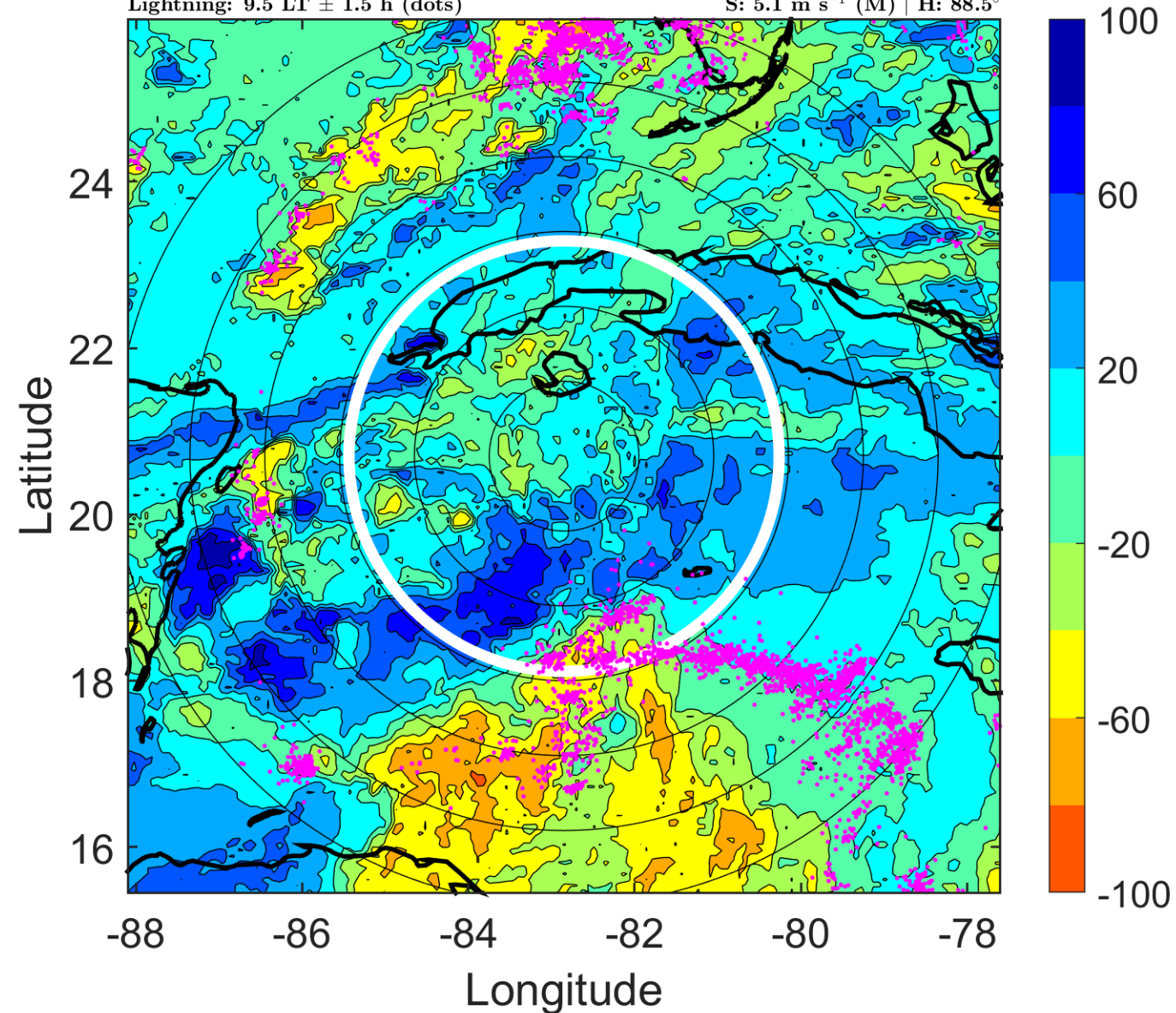
$\Delta$ t: 2010092815 (9.5 LT) - 2010092809 (3.5 LT)

Lightning: 9.5 LT  $\pm$  1.5 h (dots)

PT: LLCP | EA: ACT

16L (NICOLE) | 37.5 kt TS

S: 5.1 m s<sup>-1</sup> (M) | H: 88.5°



### IR BT & Lightning

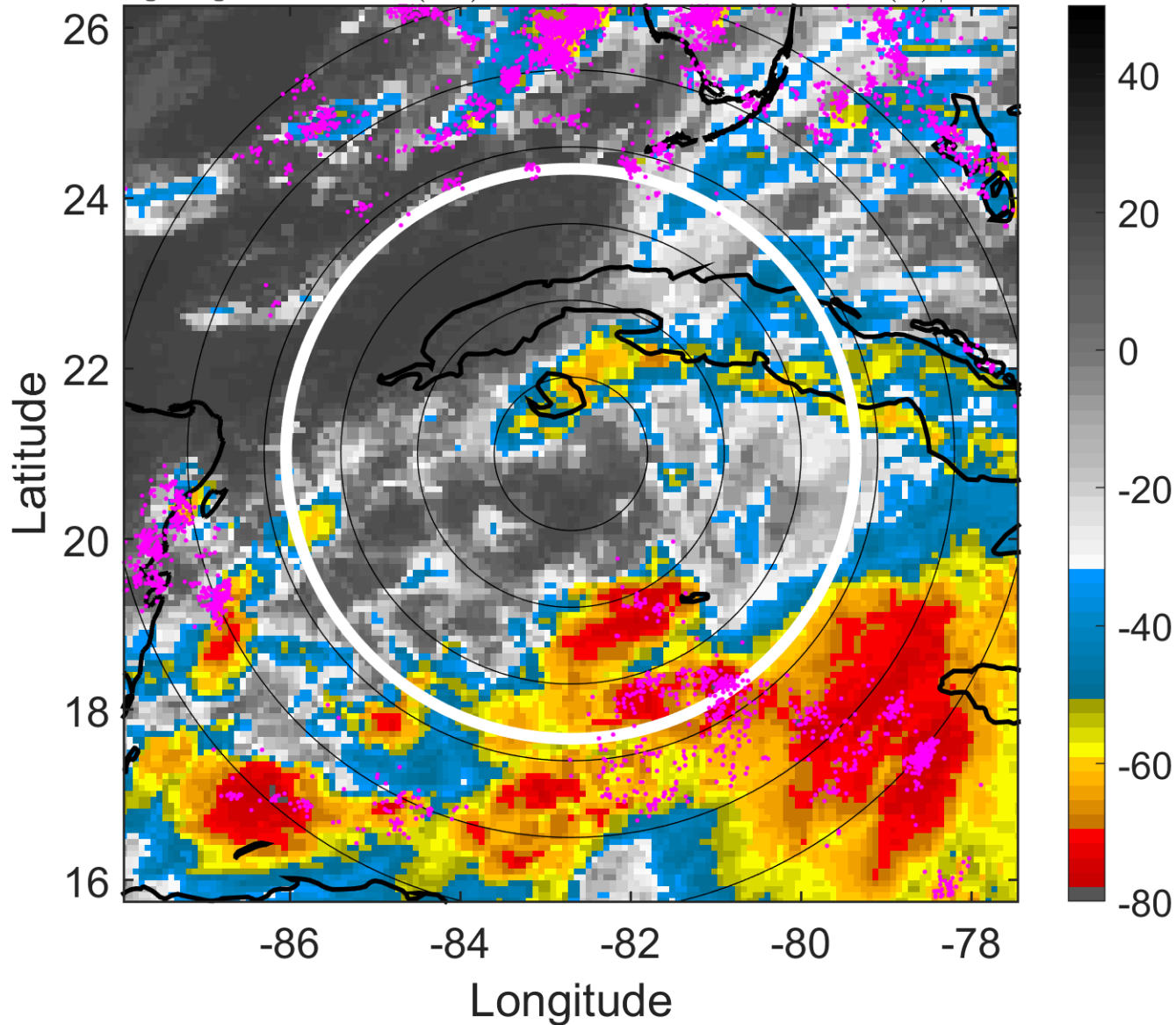
t: 2010092818 (12.5 LT)

Lightning: 12.5 LT  $\pm$  1.5 h (dots)

PT: LLCP | EA: ACT

16L (NICOLE) | 40 kt TS

S: 7 m s<sup>-1</sup> (M) | H: 69°



### 6-h IR BT Differences & Lightning

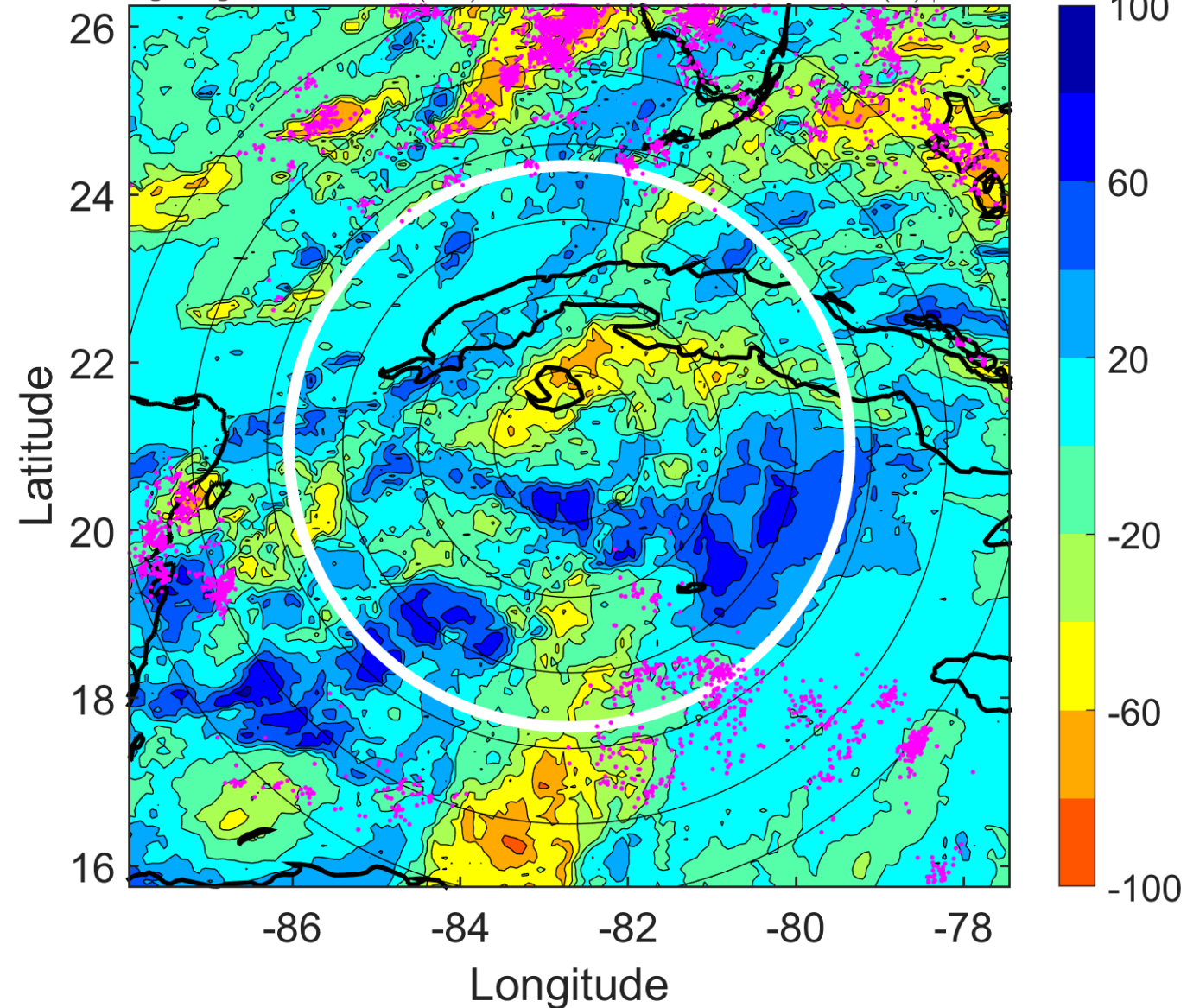
$\Delta$ t: 2010092818 (12.5 LT) - 2010092812 (6.5 LT)

Lightning: 12.5 LT  $\pm$  1.5 h (dots)

PT: LLCP | EA: ACT

16L (NICOLE) | 40 kt TS

S: 7 m s<sup>-1</sup> (M) | H: 69°



### IR BT & Lightning

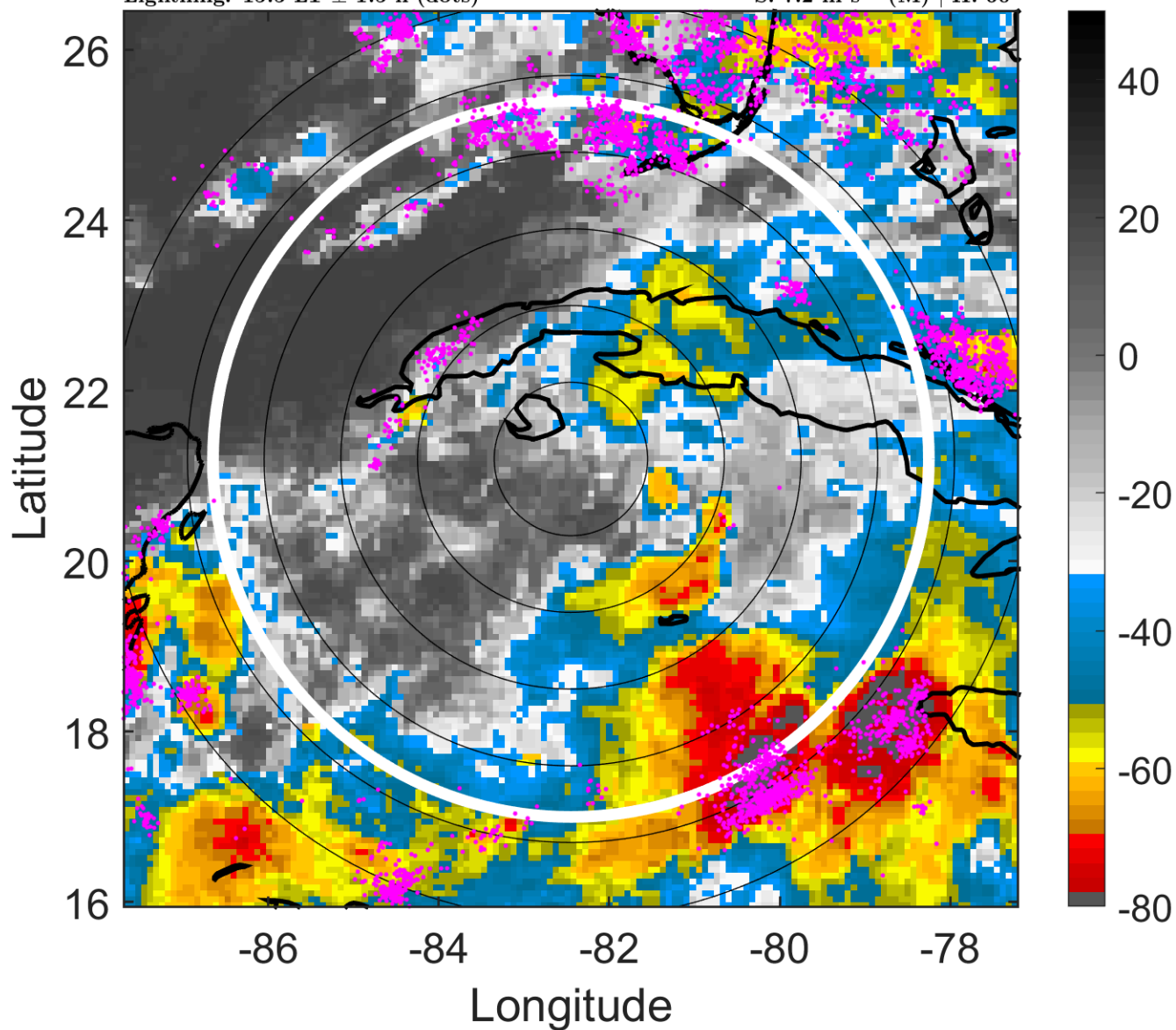
t: 2010092821 (15.5 LT)

Lightning: 15.5 LT  $\pm$  1.5 h (dots)

PT: LLCP | EA: ACT

16L (NICOLE) | 37.5 kt TS

S: 7.2 m s<sup>-1</sup> (M) | H: 60°



### 6-h IR BT Differences & Lightning

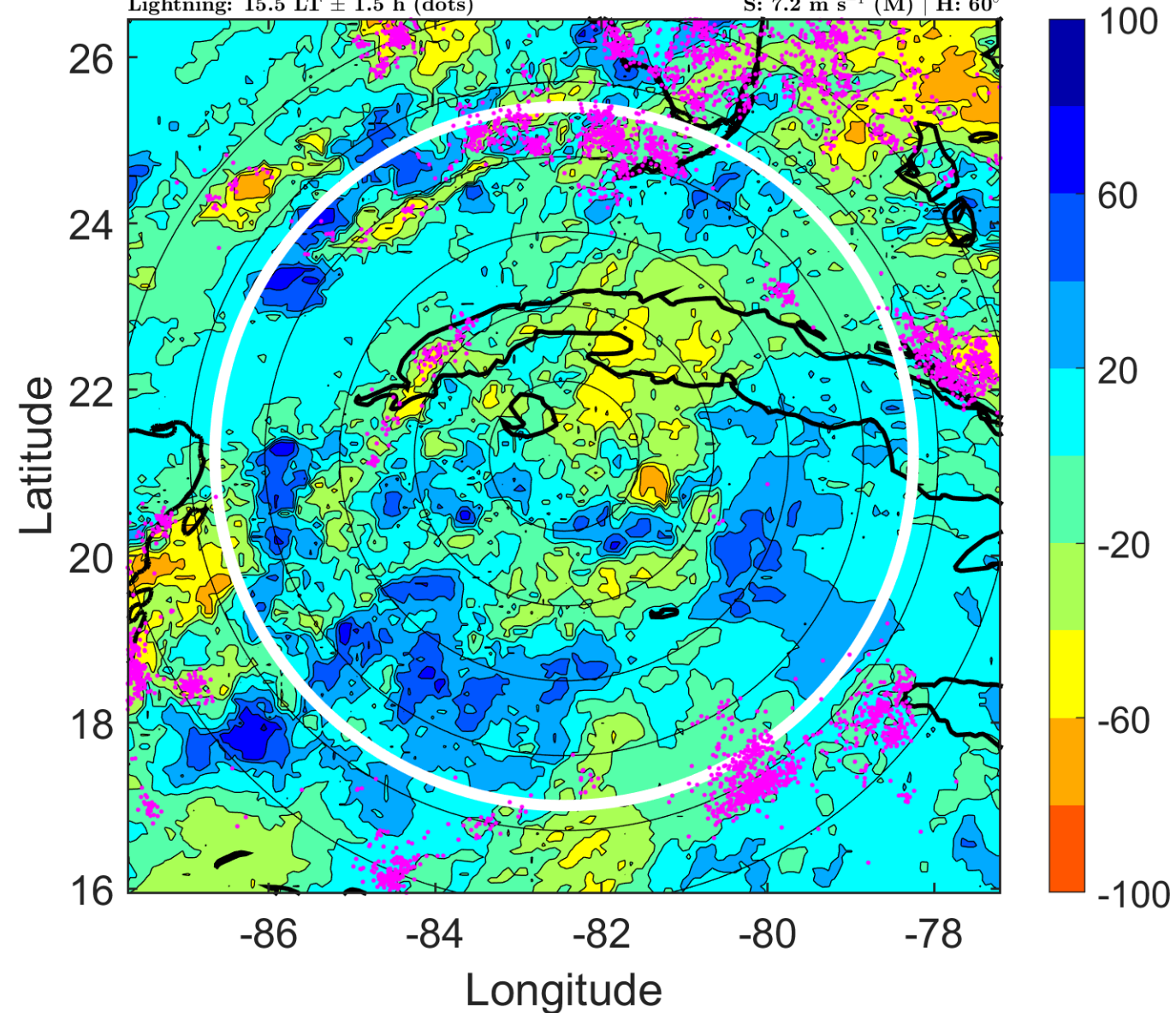
$\Delta$ t: 2010092821 (15.5 LT) - 2010092815 (9.5 LT)

Lightning: 15.5 LT  $\pm$  1.5 h (dots)

PT: LLCP | EA: ACT

16L (NICOLE) | 37.5 kt TS

S: 7.2 m s<sup>-1</sup> (M) | H: 60°



### IR BT & Lightning

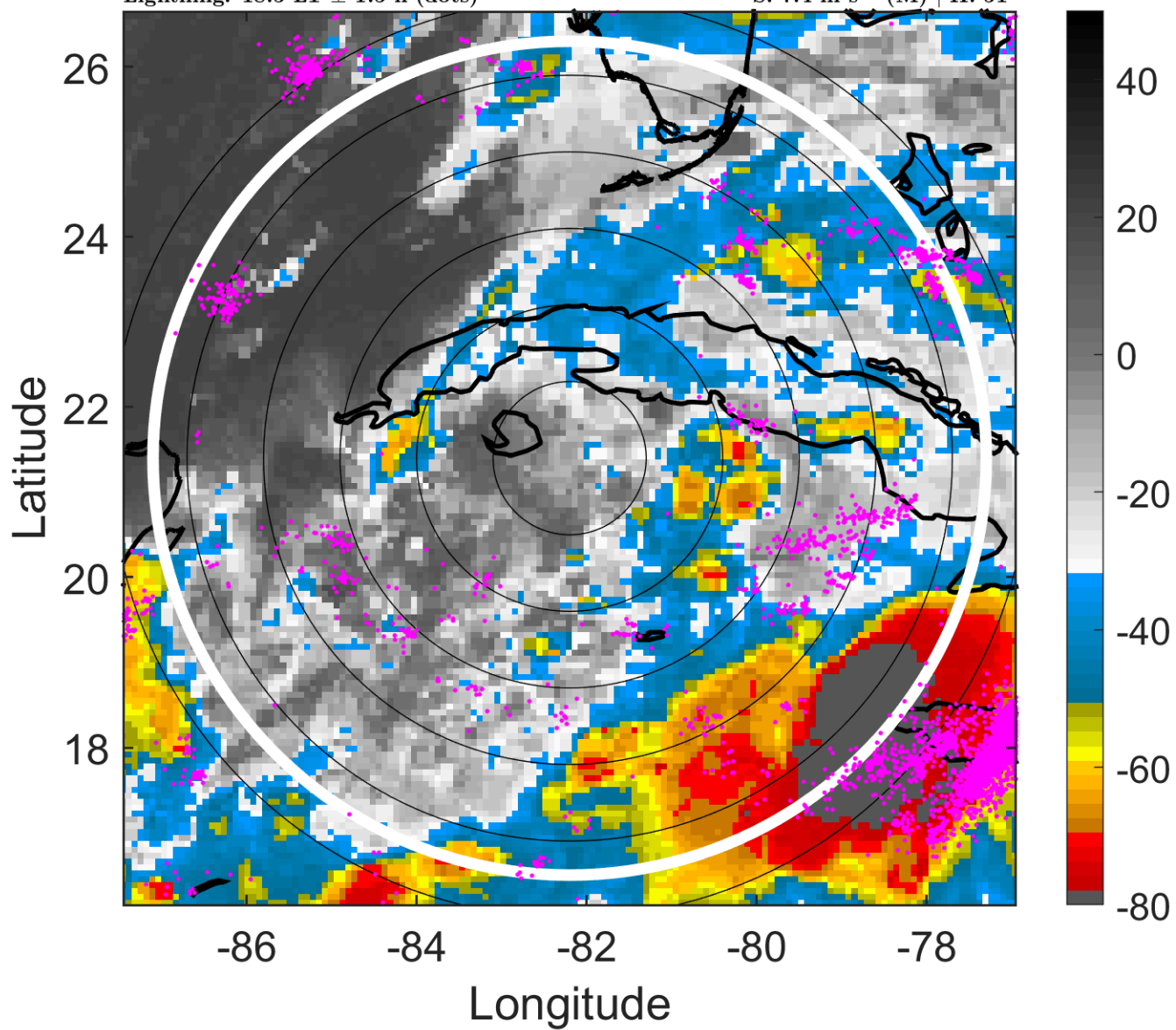
t: 2010092900 (18.5 LT)

Lightning: 18.5 LT  $\pm$  1.5 h (dots)

PT: LLCP | EA: ACT

16L (NICOLE) | 35 kt TS

S: 7.4 m s<sup>-1</sup> (M) | H: 51°



### 6-h IR BT Differences & Lightning

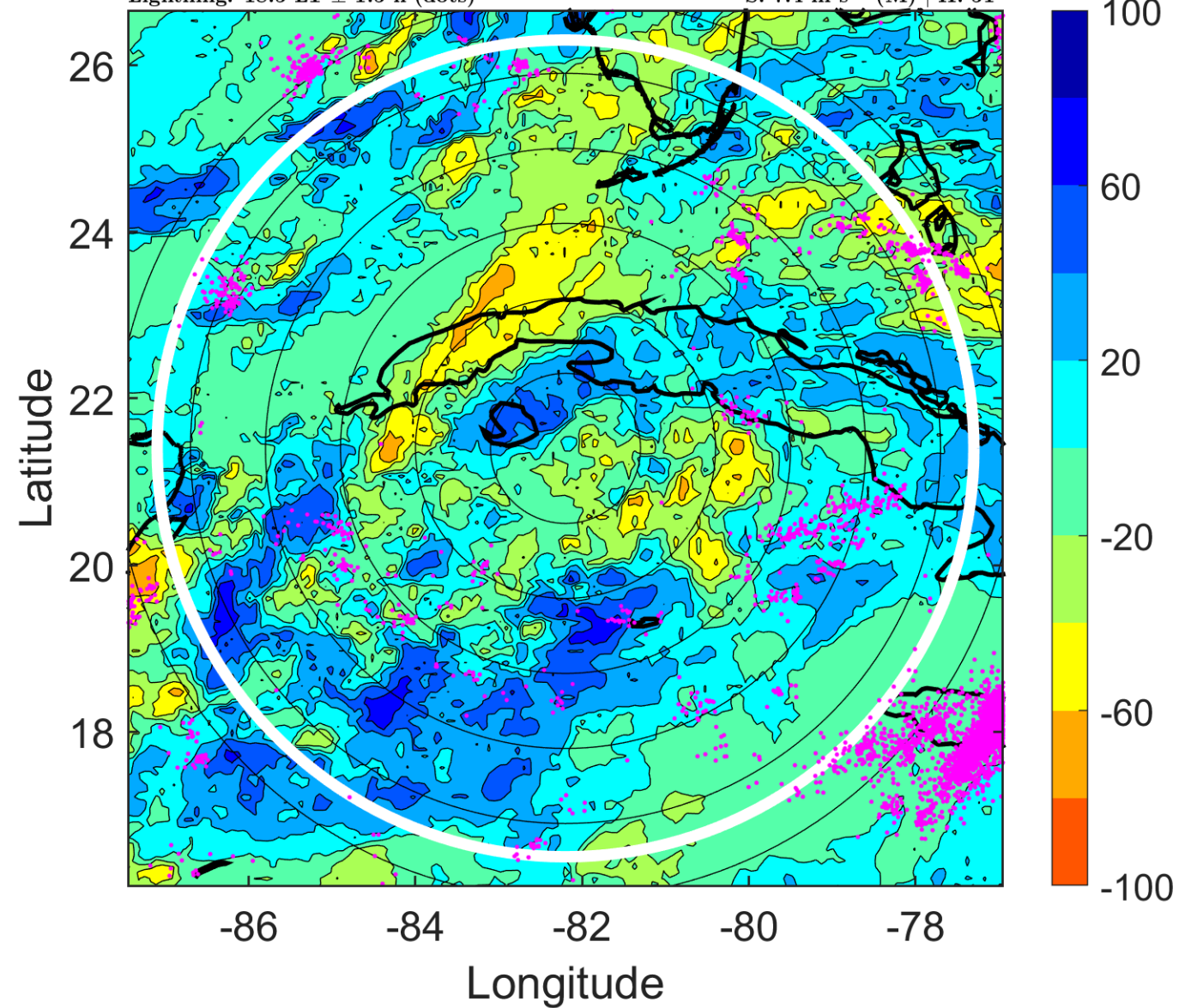
$\Delta$ t: 2010092900 (18.5 LT) - 2010092818 (12.5 LT)

Lightning: 18.5 LT  $\pm$  1.5 h (dots)

PT: LLCP | EA: ACT

16L (NICOLE) | 35 kt TS

S: 7.4 m s<sup>-1</sup> (M) | H: 51°



### IR BT & Lightning

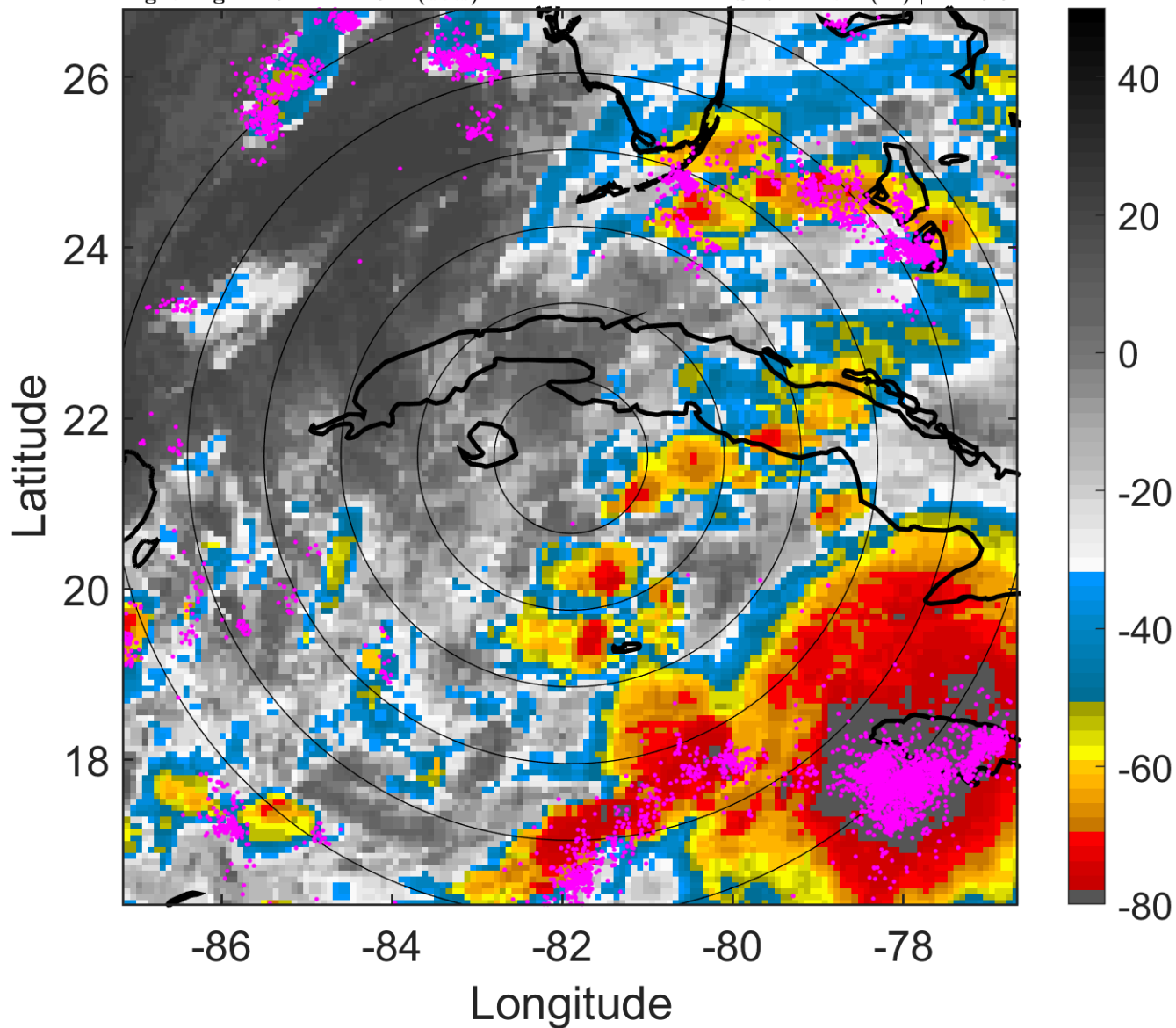
t: 2010092903 (21.5 LT)

Lightning: 21.5 LT  $\pm$  1.5 h (dots)

PT: LLCP | EA: ACT

16L (NICOLE) | 35 kt TS

S: 7.2 m s<sup>-1</sup> (M) | H: 45.5°



### 6-h IR BT Differences & Lightning

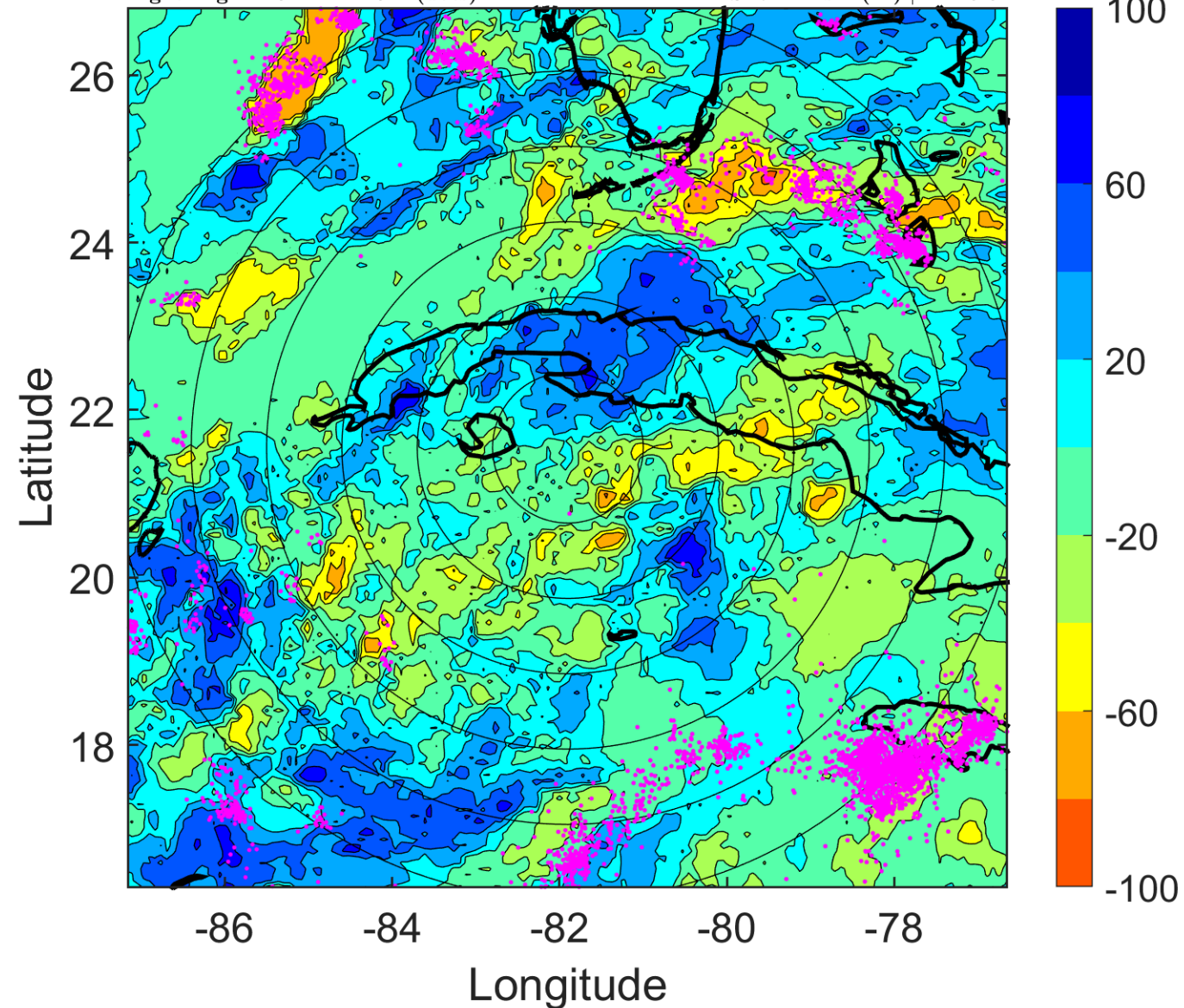
$\Delta$ t: 2010092903 (21.5 LT) - 2010092821 (15.5 LT)

Lightning: 21.5 LT  $\pm$  1.5 h (dots)

PT: LLCP | EA: ACT

16L (NICOLE) | 35 kt TS

S: 7.2 m s<sup>-1</sup> (M) | H: 45.5°





### IR BT & Lightning

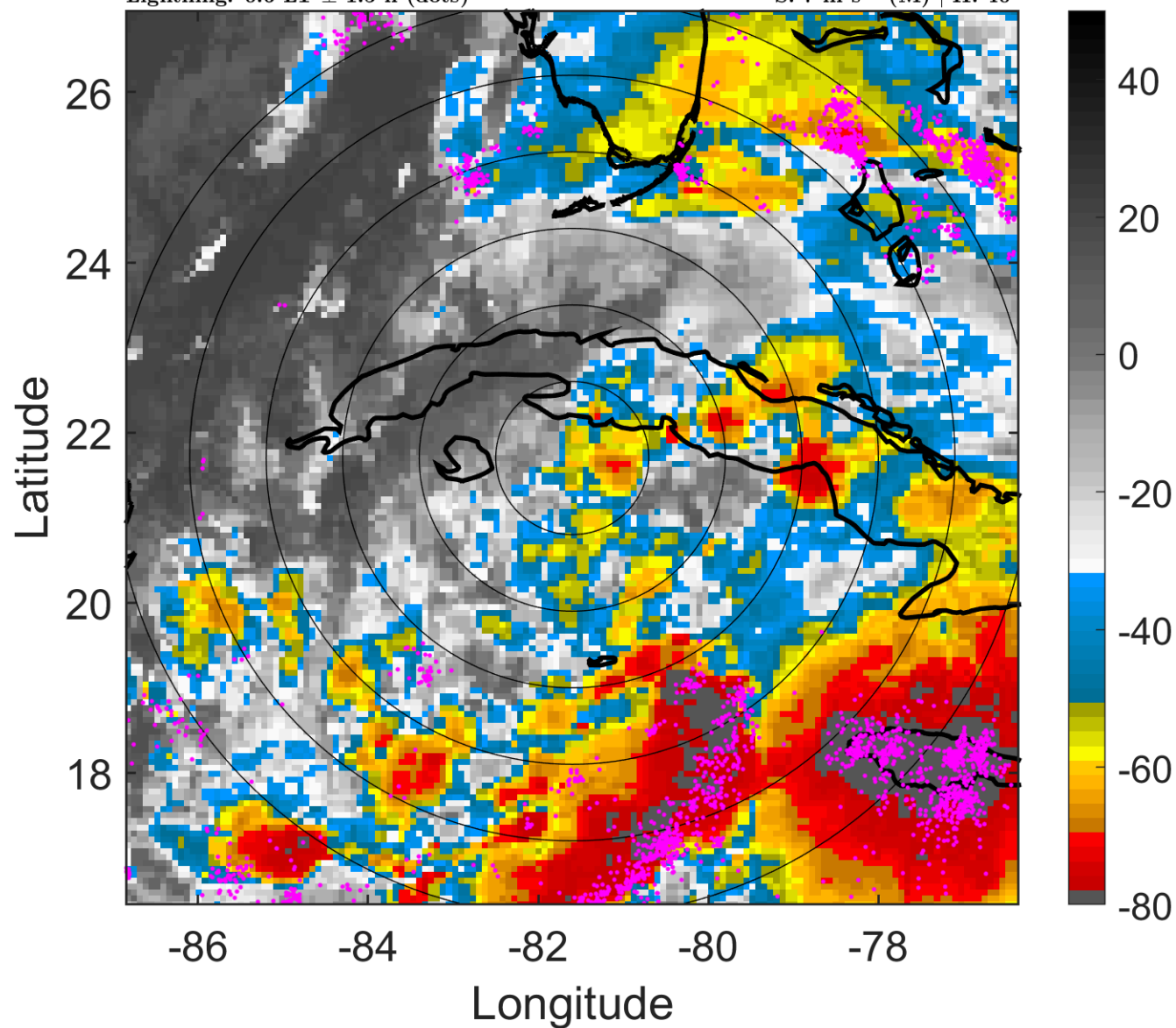
t: 2010092906 (0.6 LT)

Lightning: 0.6 LT  $\pm$  1.5 h (dots)

PT: LLCP | EA: QUASI

16L (NICOLE) | 35 kt TS

S: 7 m s<sup>-1</sup> (M) | H: 40°



### 6-h IR BT Differences & Lightning

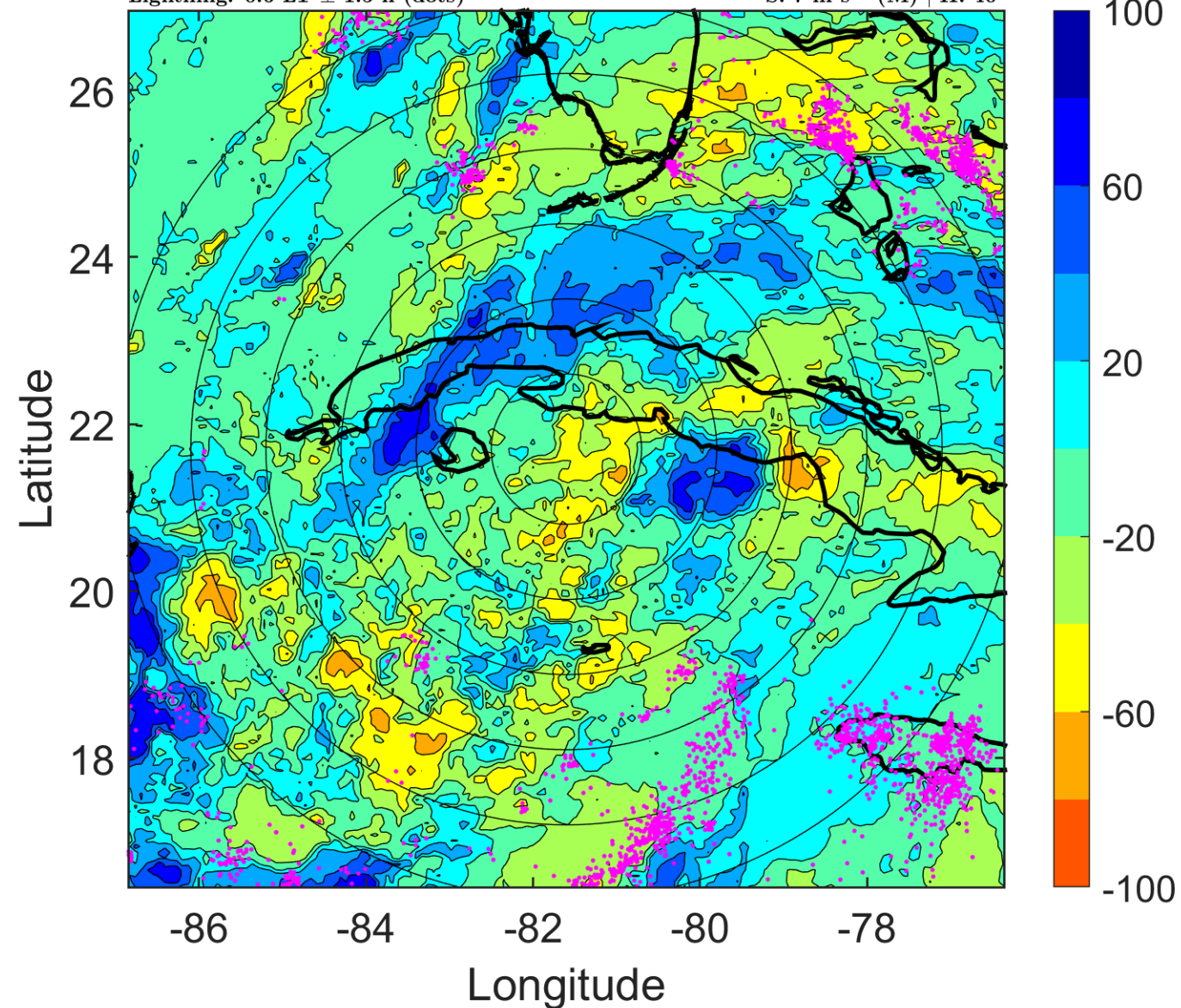
$\Delta$ t: 2010092906 (0.6 LT) - 2010092900 (18.5 LT)

Lightning: 0.6 LT  $\pm$  1.5 h (dots)

PT: LLCP | EA: QUASI

16L (NICOLE) | 35 kt TS

S: 7 m s<sup>-1</sup> (M) | H: 40°



### IR BT & Lightning

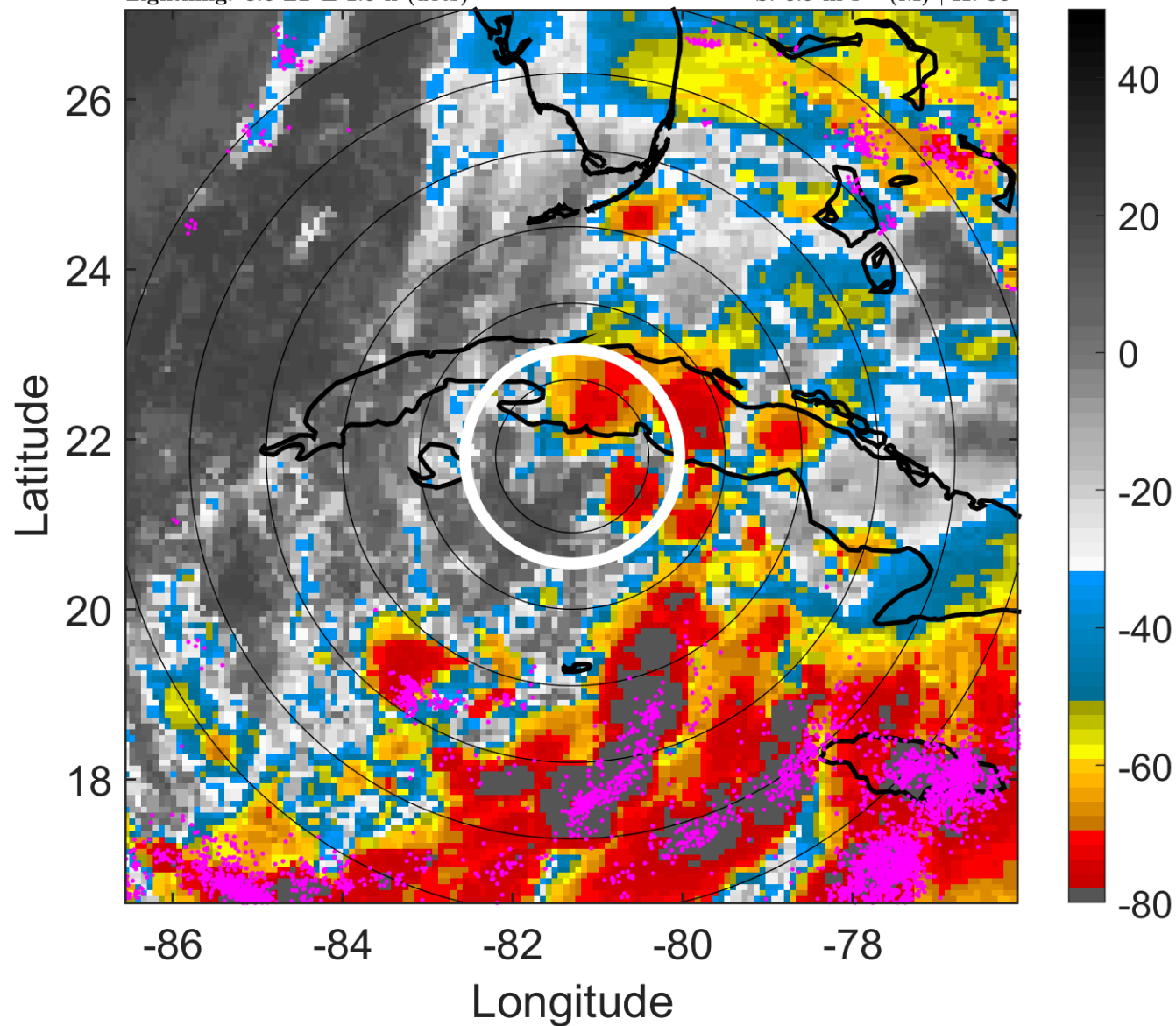
t: 2010092909 (3.6 LT)

Lightning: 3.6 LT  $\pm$  1.5 h (dots)

PT: LLCP | EA: QUASI

16L (NICOLE) | 37.5 kt TS

S: 6.9 m s<sup>-1</sup> (M) | H: 36°



### 6-h IR BT Differences & Lightning

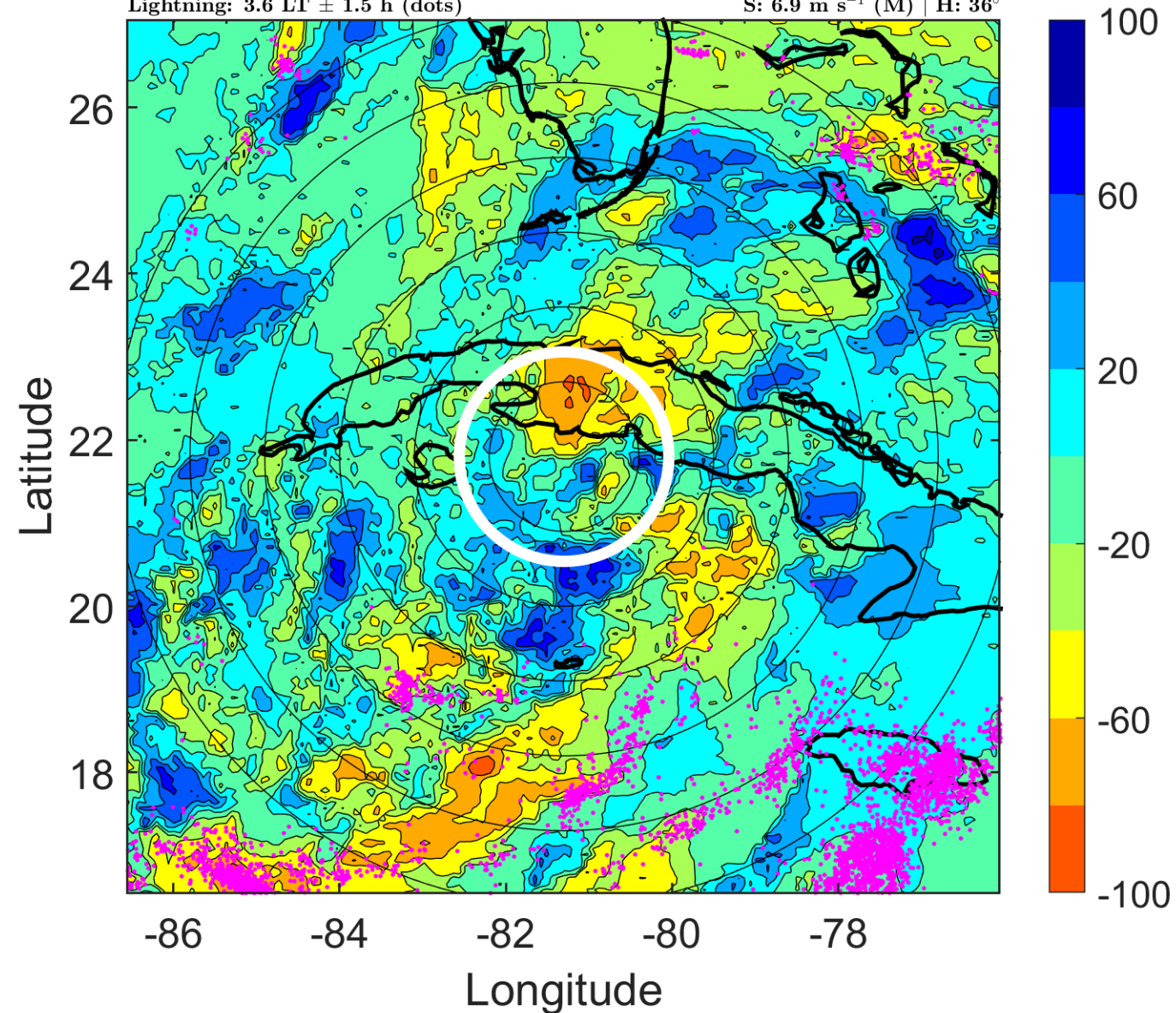
$\Delta$ t: 2010092909 (3.6 LT) - 2010092903 (21.5 LT)

Lightning: 3.6 LT  $\pm$  1.5 h (dots)

PT: LLCP | EA: QUASI

16L (NICOLE) | 37.5 kt TS

S: 6.9 m s<sup>-1</sup> (M) | H: 36°



### IR BT & Lightning

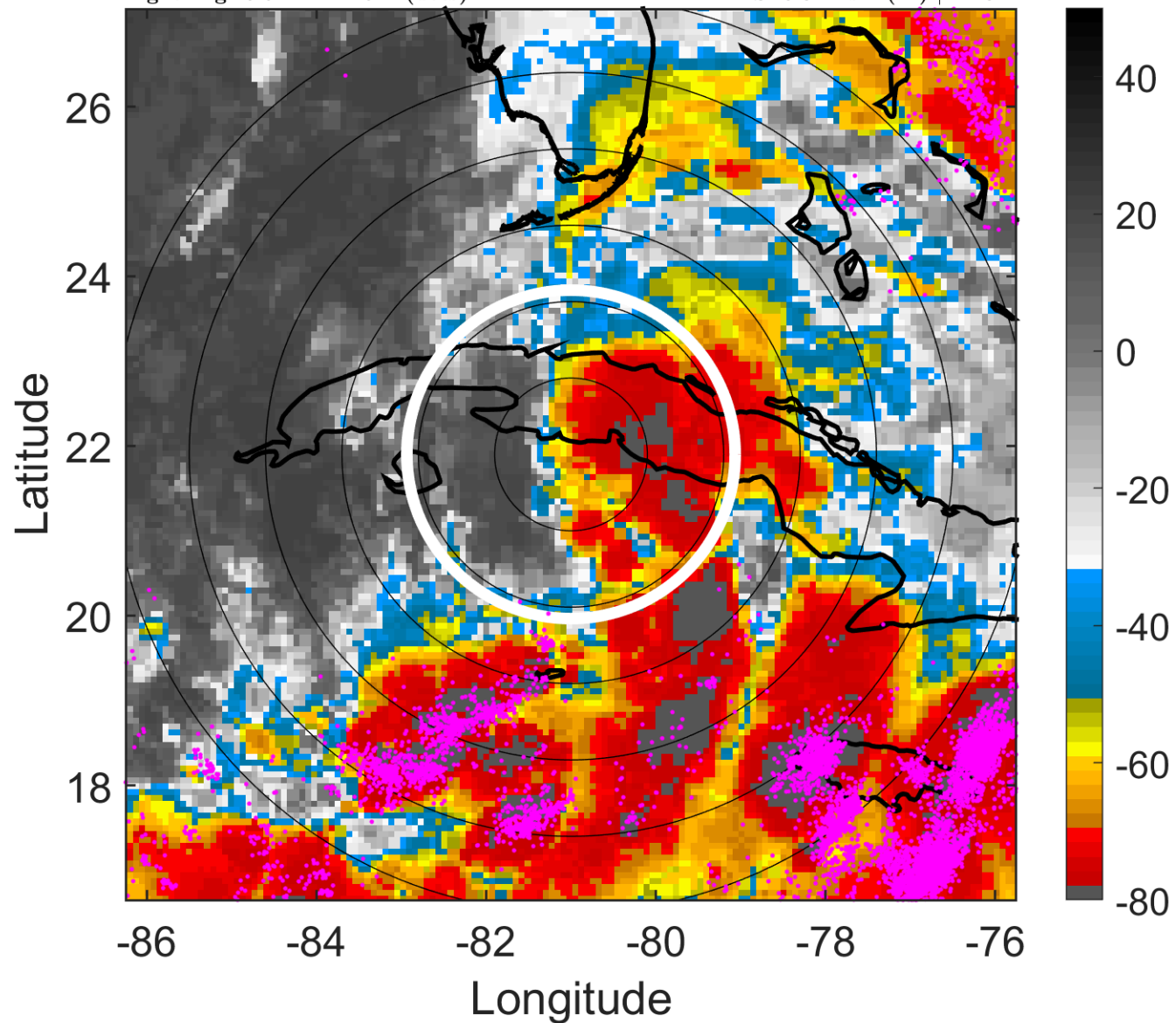
t: 2010092912 (6.6 LT)

Lightning: 6.6 LT  $\pm$  1.5 h (dots)

PT: LLCP | EA: QUASI

16L (NICOLE) | 40 kt TS

S: 6.8 m s<sup>-1</sup> (M) | H: 32°



### 6-h IR BT Differences & Lightning

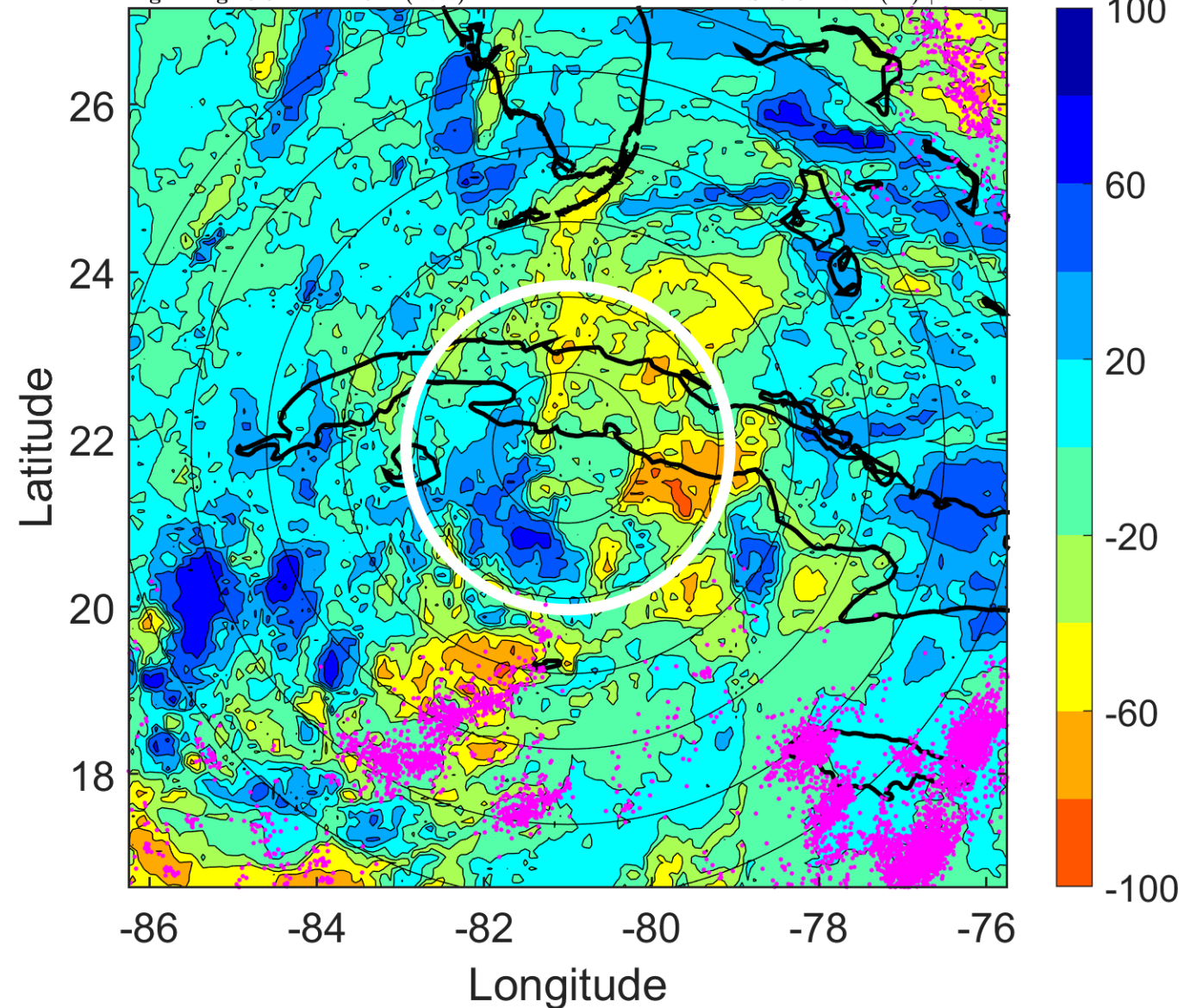
$\Delta$ t: 2010092912 (6.6 LT) - 2010092906 (0.6 LT)

Lightning: 6.6 LT  $\pm$  1.5 h (dots)

PT: LLCP | EA: QUASI

16L (NICOLE) | 40 kt TS

S: 6.8 m s<sup>-1</sup> (M) | H: 32°



### IR BT & Lightning

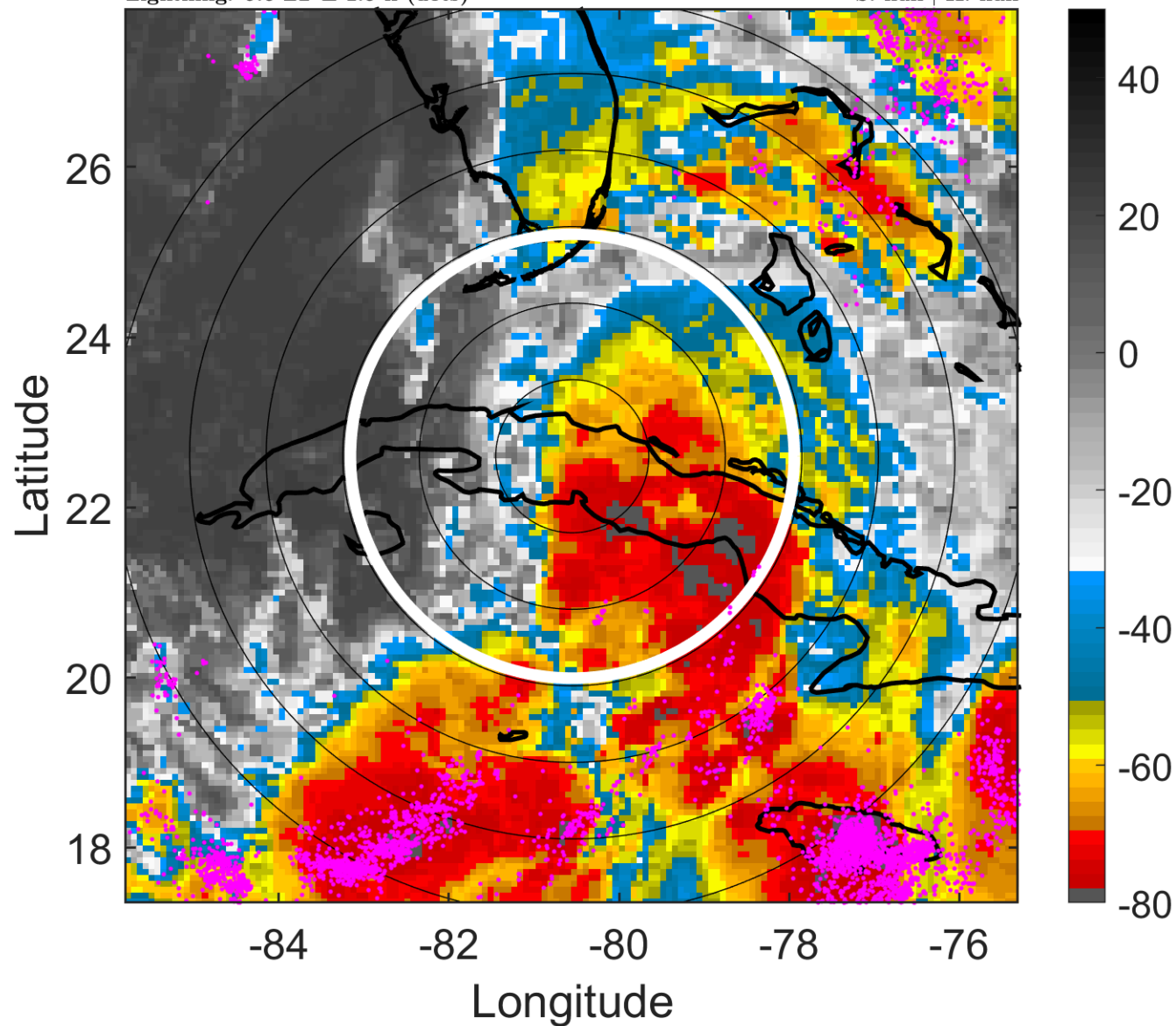
t: 2010092915 (9.6 LT)

Lightning: 9.6 LT  $\pm$  1.5 h (dots)

PT: LLCP | EA: QUASI

16L (NICOLE) | 40 kt TS

S: null | H: null



### 6-h IR BT Differences & Lightning

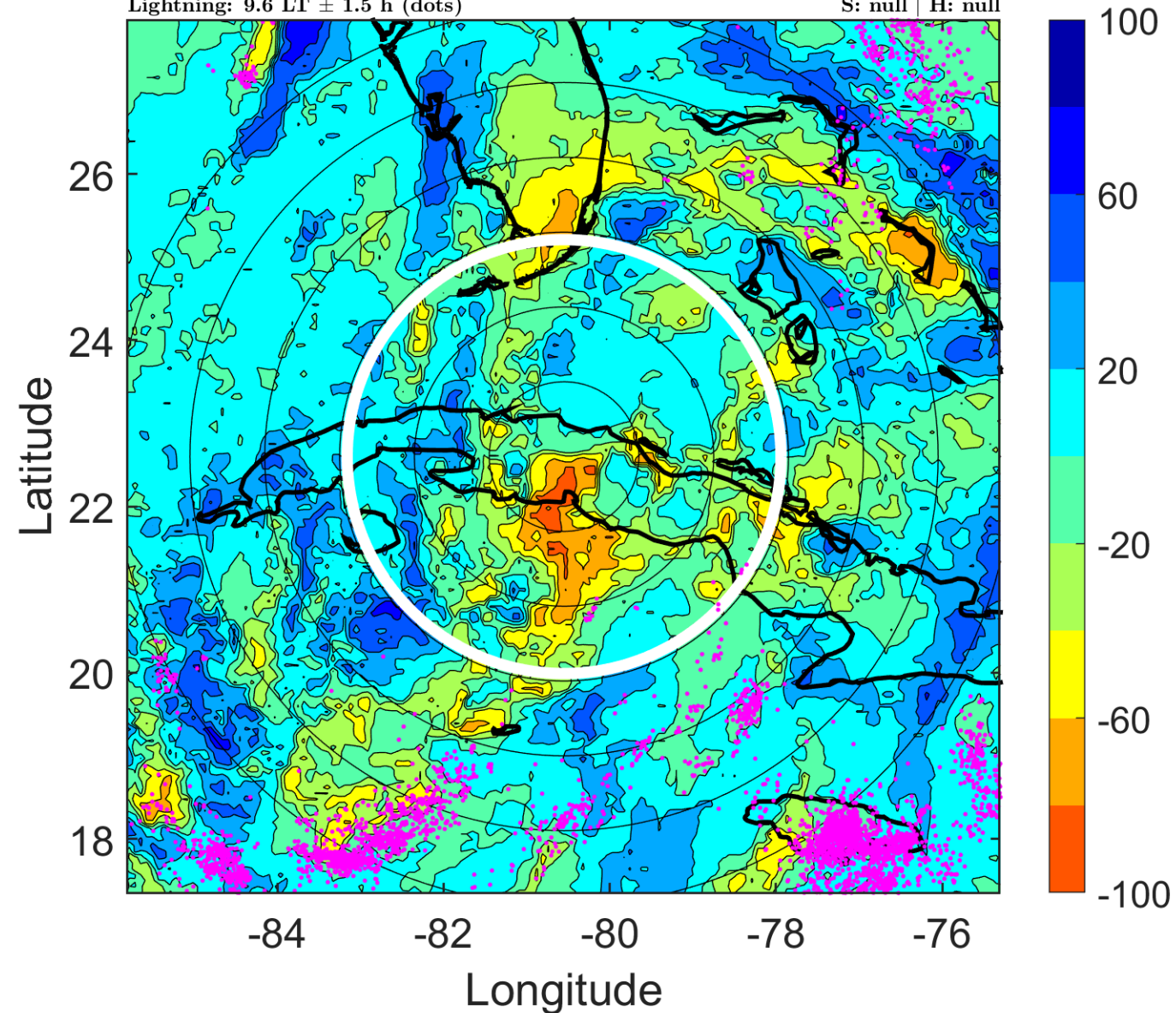
$\Delta$ t: 2010092915 (9.6 LT) - 2010092909 (3.6 LT)

Lightning: 9.6 LT  $\pm$  1.5 h (dots)

PT: LLCP | EA: QUASI

16L (NICOLE) | 40 kt TS

S: null | H: null



### IR BT & Lightning

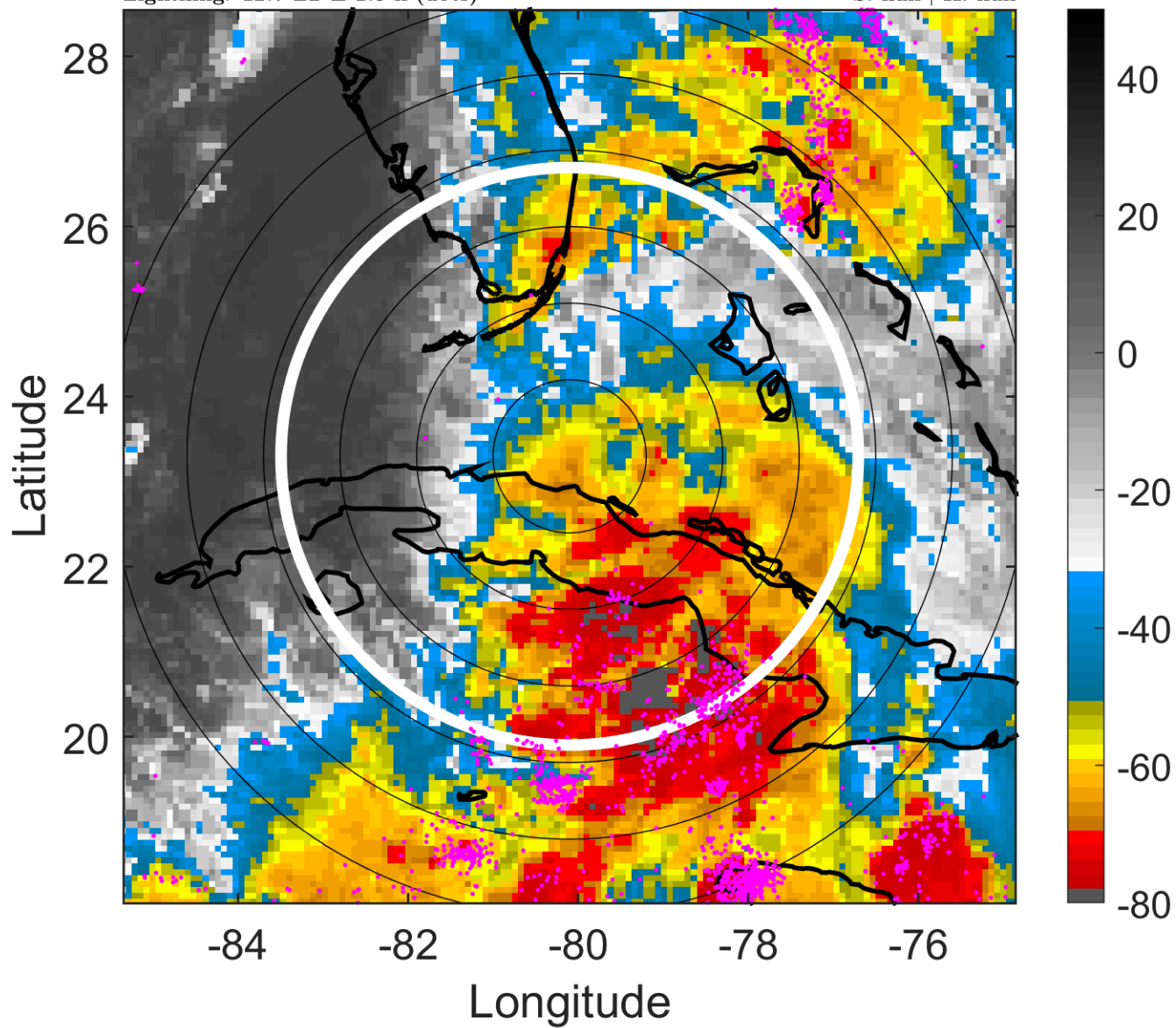
t: 2010092918 (12.7 LT)

Lightning: 12.7 LT  $\pm$  1.5 h (dots)

PT: LLCP | EA: QUASI

16L (NICOLE) | 40 kt LO

S: null | H: null



### 6-h IR BT Differences & Lightning

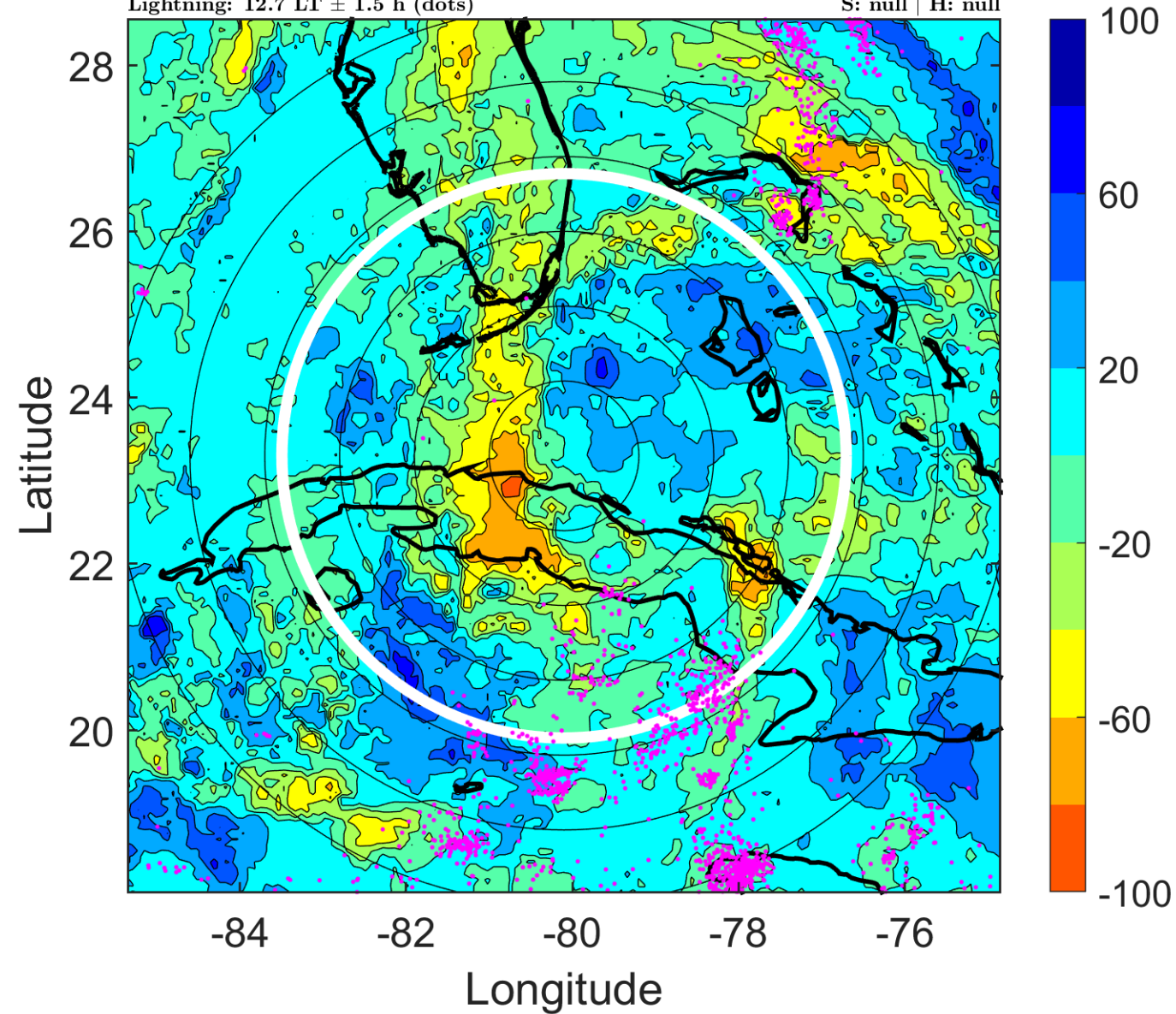
$\Delta$ t: 2010092918 (12.7 LT) - 2010092912 (6.6 LT)

Lightning: 12.7 LT  $\pm$  1.5 h (dots)

PT: LLCP | EA: QUASI

16L (NICOLE) | 40 kt LO

S: null | H: null



### IR BT & Lightning

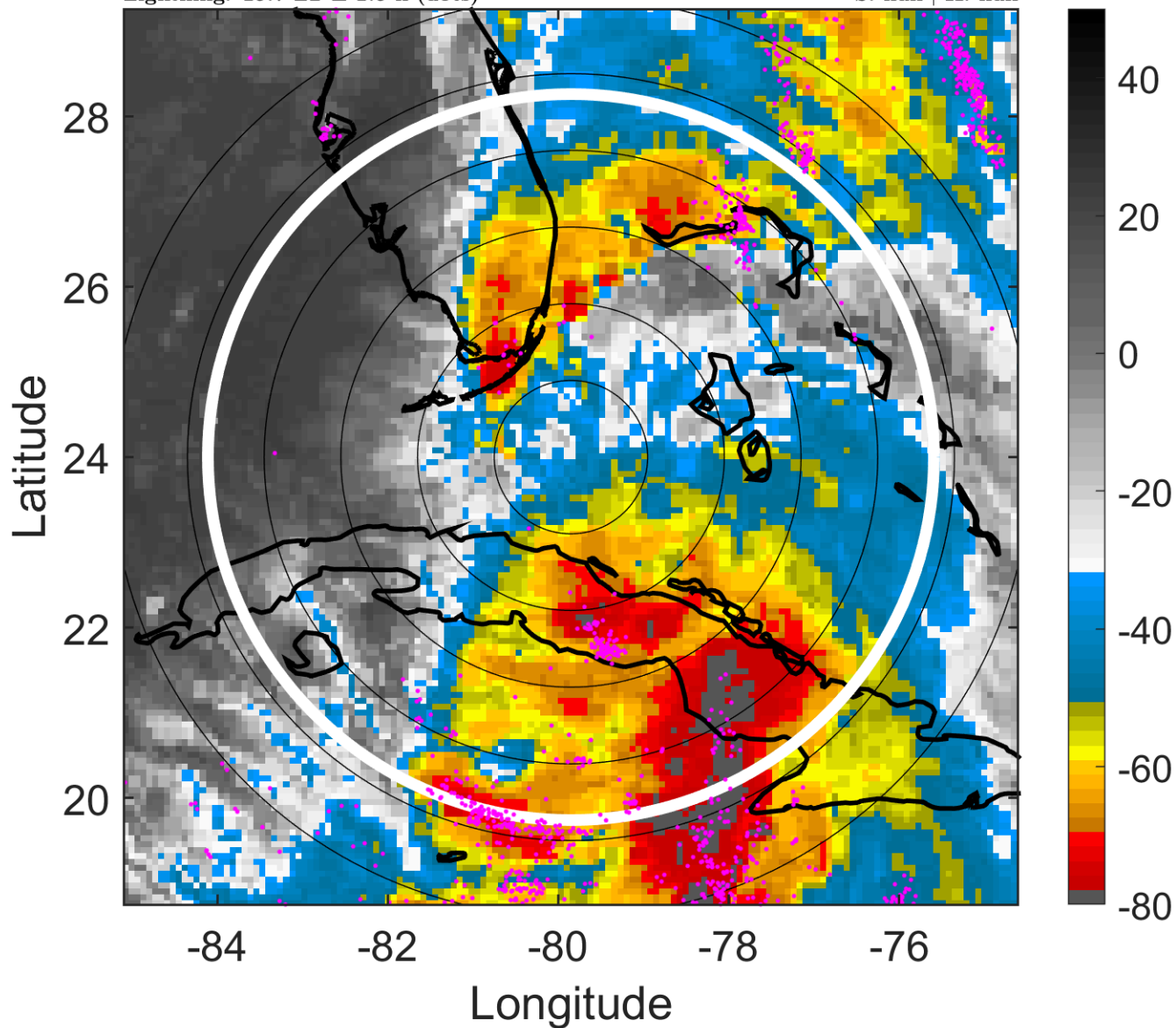
t: 2010092921 (15.7 LT)

Lightning: 15.7 LT  $\pm$  1.5 h (dots)

PT: LLCP | EA: QUASI

16L (NICOLE) | 40 kt LO

S: null | H: null



### 6-h IR BT Differences & Lightning

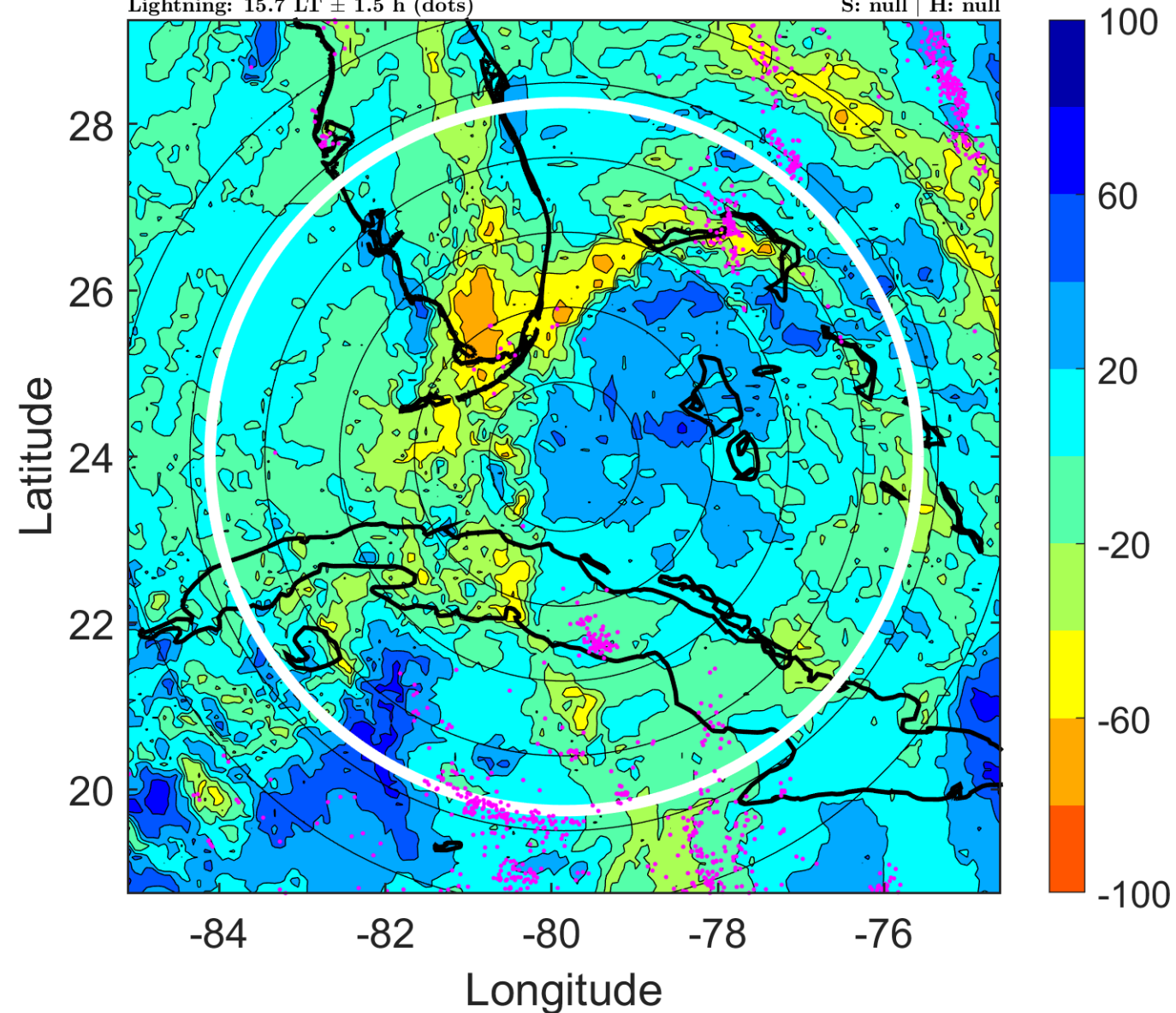
$\Delta$ t: 2010092921 (15.7 LT) - 2010092915 (9.6 LT)

Lightning: 15.7 LT  $\pm$  1.5 h (dots)

PT: LLCP | EA: QUASI

16L (NICOLE) | 40 kt LO

S: null | H: null



### IR BT & Lightning

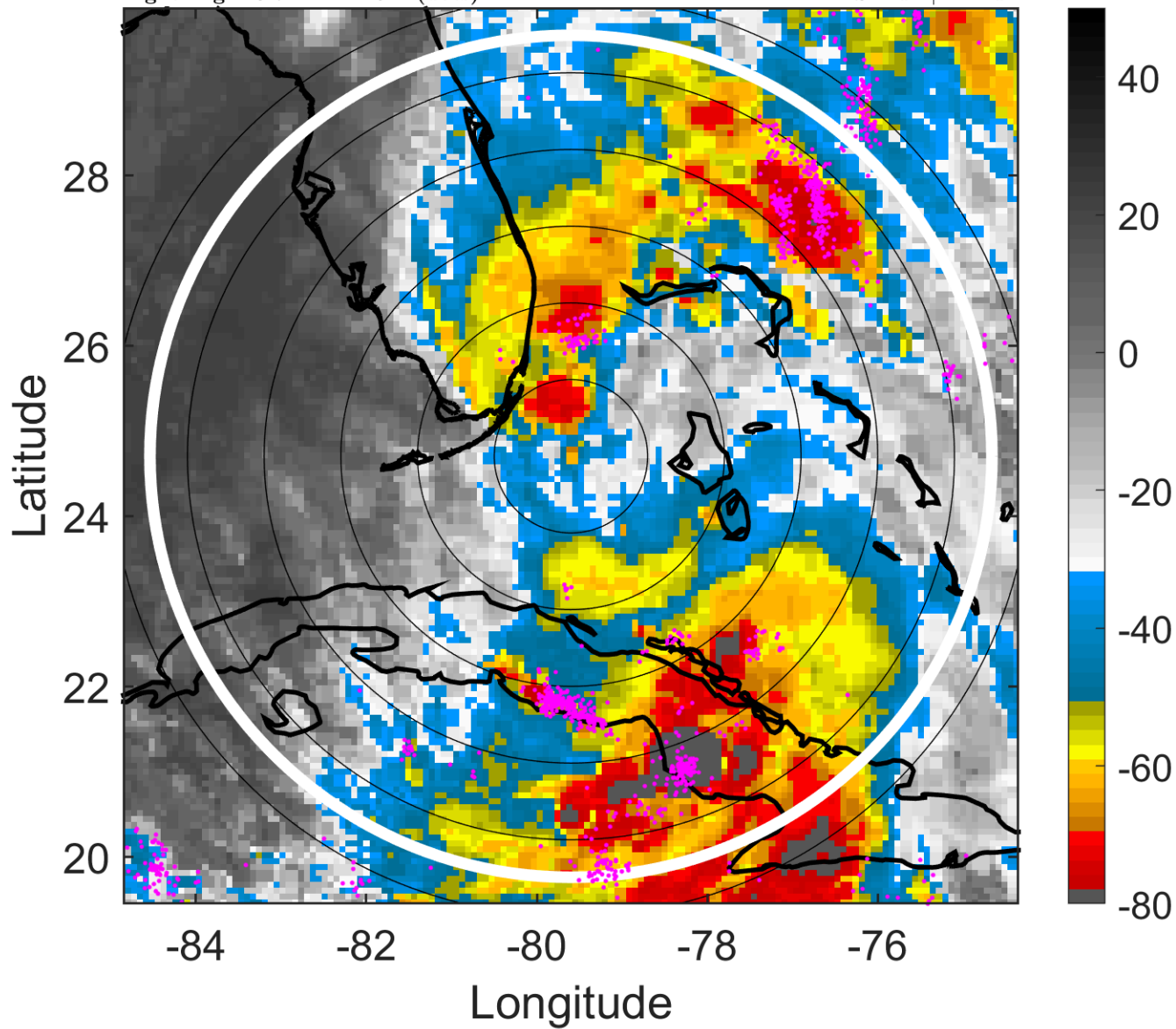
t: 2010093000 (18.7 LT)

Lightning: 18.7 LT  $\pm$  1.5 h (dots)

PT: LLCP | EA: QUASI

16L (NICOLE) | 40 kt LO

S: null | H: null



### 6-h IR BT Differences & Lightning

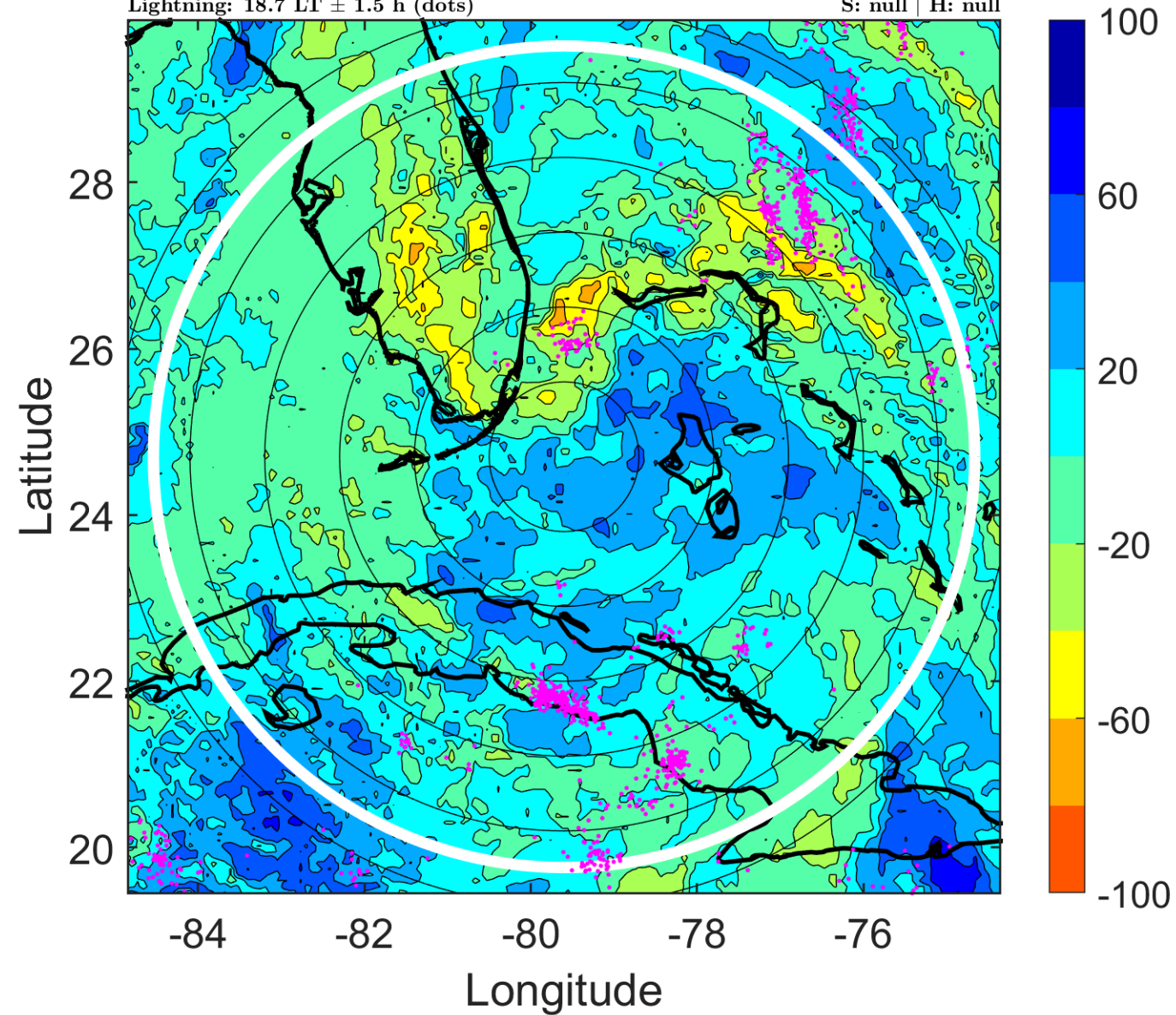
$\Delta$ t: 2010093000 (18.7 LT) - 2010092918 (12.7 LT)

Lightning: 18.7 LT  $\pm$  1.5 h (dots)

PT: LLCP | EA: QUASI

16L (NICOLE) | 40 kt LO

S: null | H: null



### IR BT & Lightning

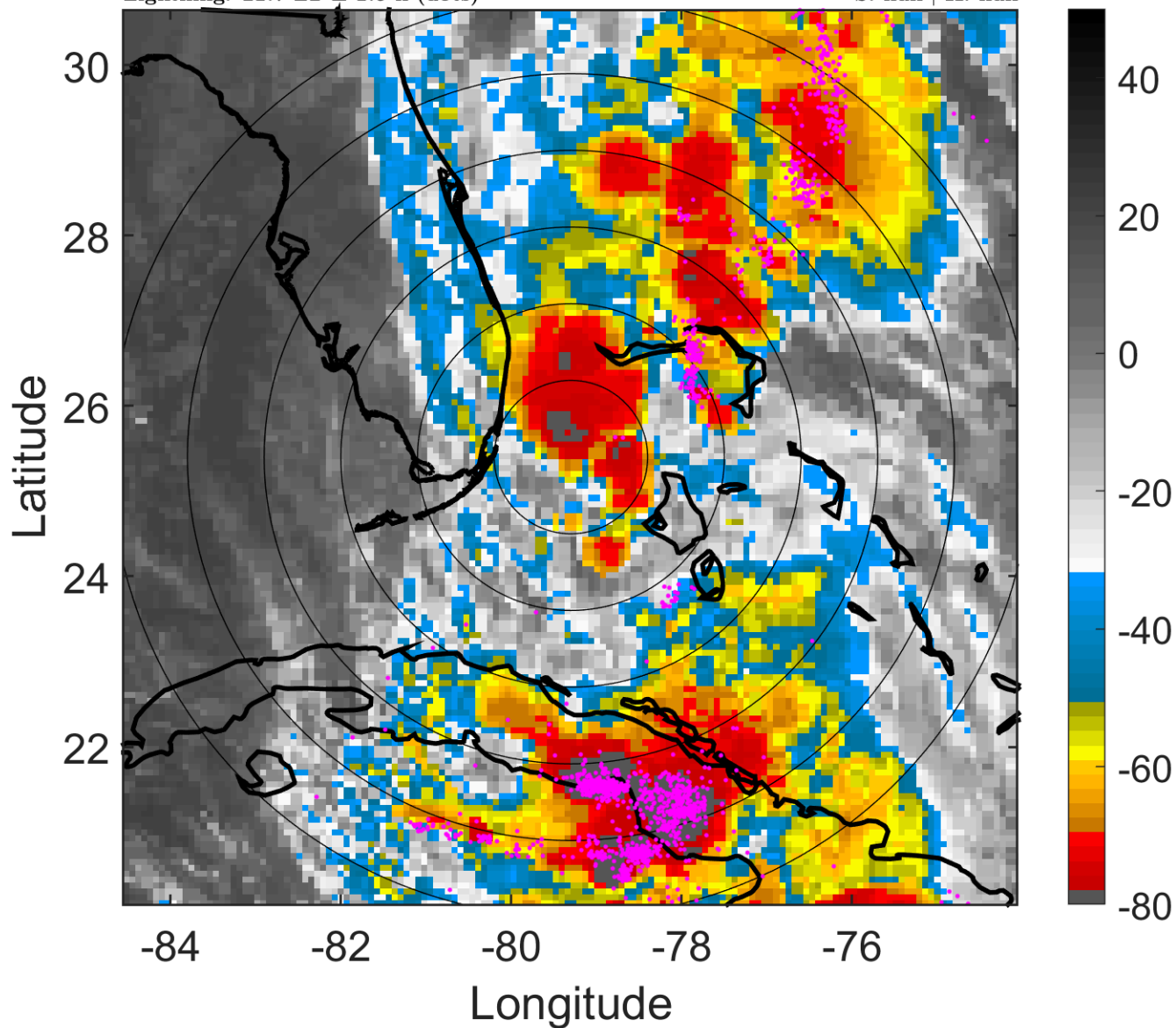
t: 2010093003 (21.7 LT)

Lightning: 21.7 LT  $\pm$  1.5 h (dots)

PT: LLCP | EA: QUASI

16L (NICOLE) | 40 kt LO

S: null | H: null



### 6-h IR BT Differences & Lightning

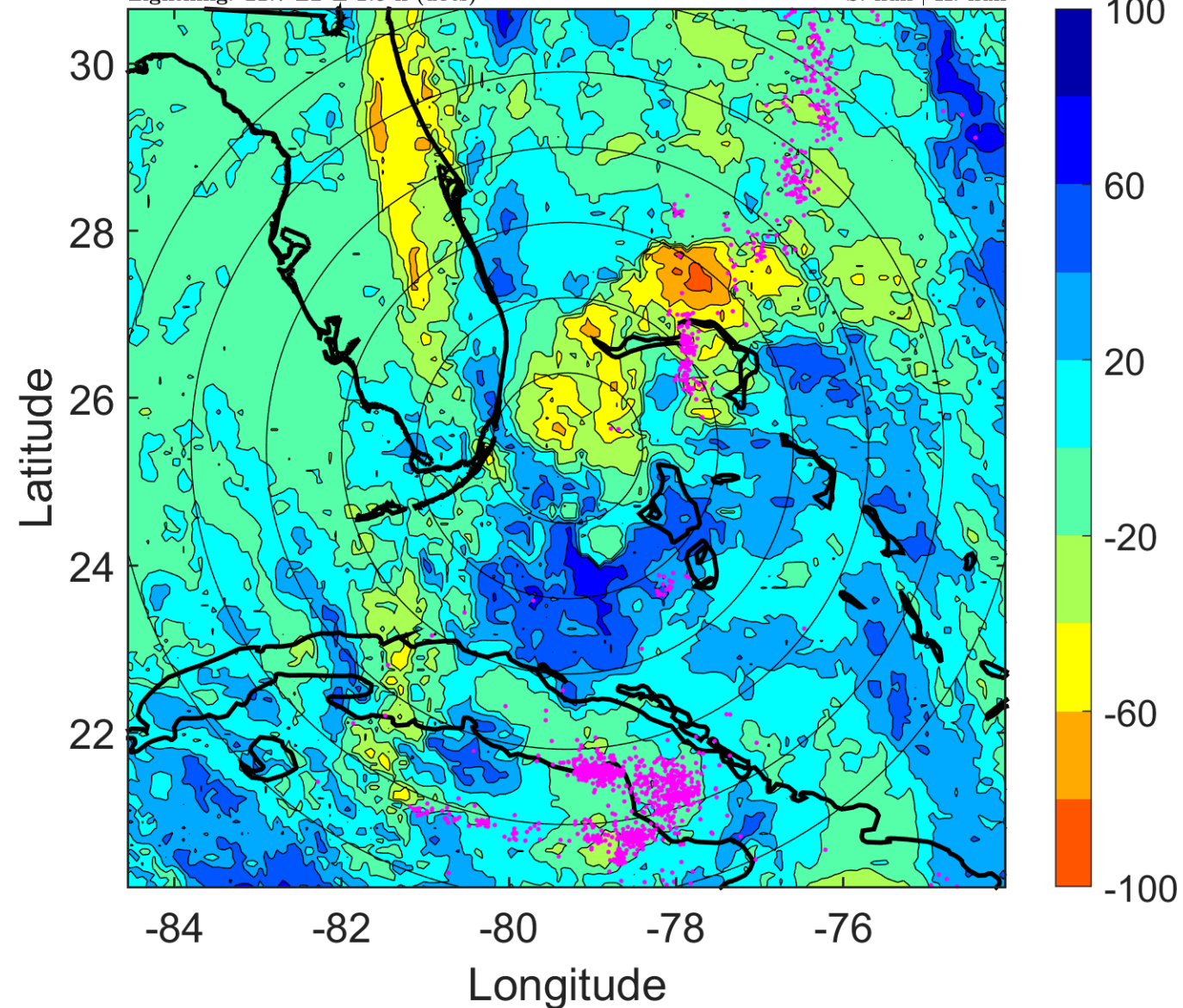
$\Delta$ t: 2010093003 (21.7 LT) - 2010092921 (15.7 LT)

Lightning: 21.7 LT  $\pm$  1.5 h (dots)

PT: LLCP | EA: QUASI

16L (NICOLE) | 40 kt LO

S: null | H: null





### IR BT & Lightning

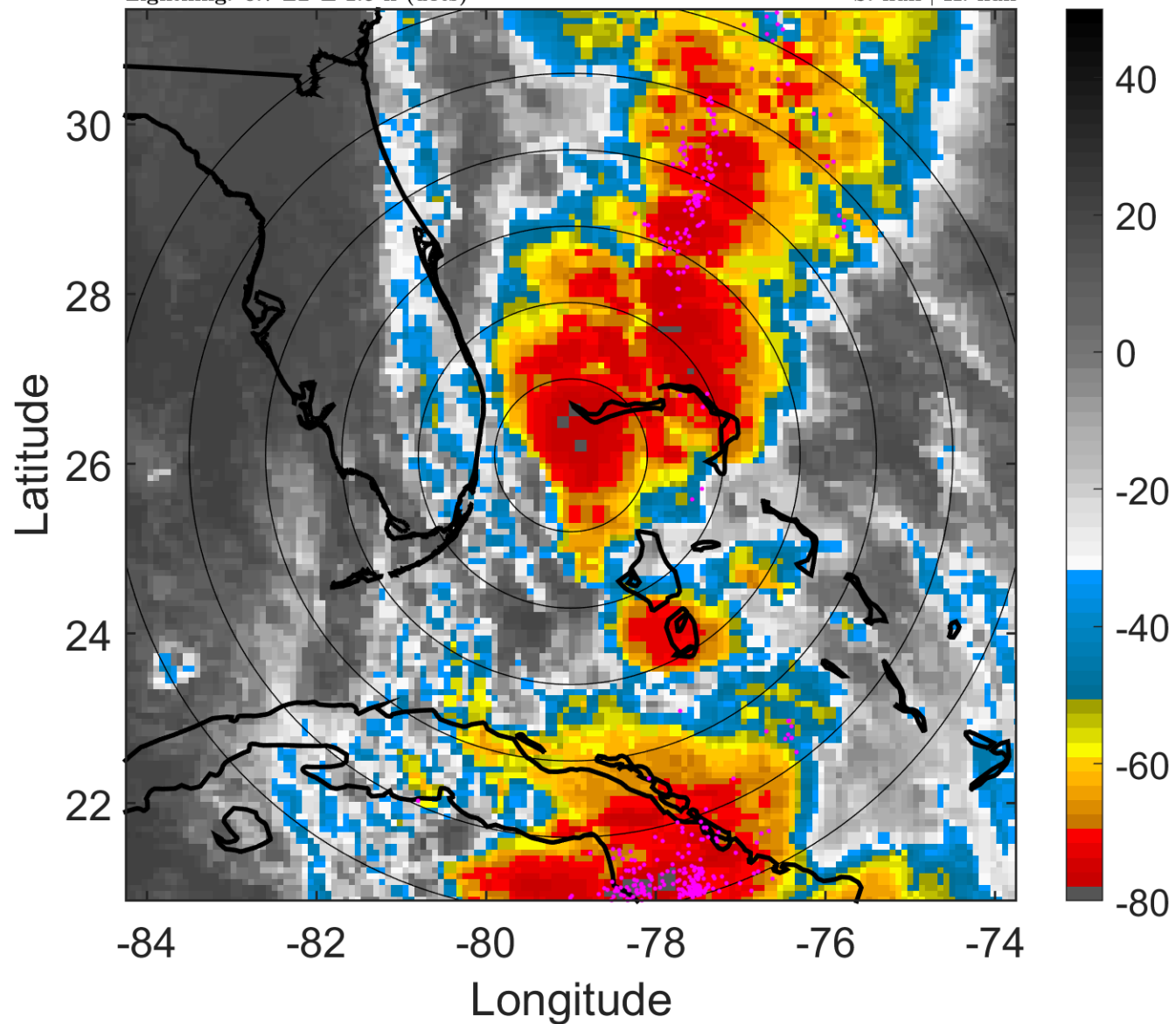
t: 2010093006 (0.7 LT)

Lightning: 0.7 LT  $\pm$  1.5 h (dots)

PT: SLCP | EA: INACT

16L (NICOLE) | 40 kt EX

S: null | H: null



### 6-h IR BT Differences & Lightning

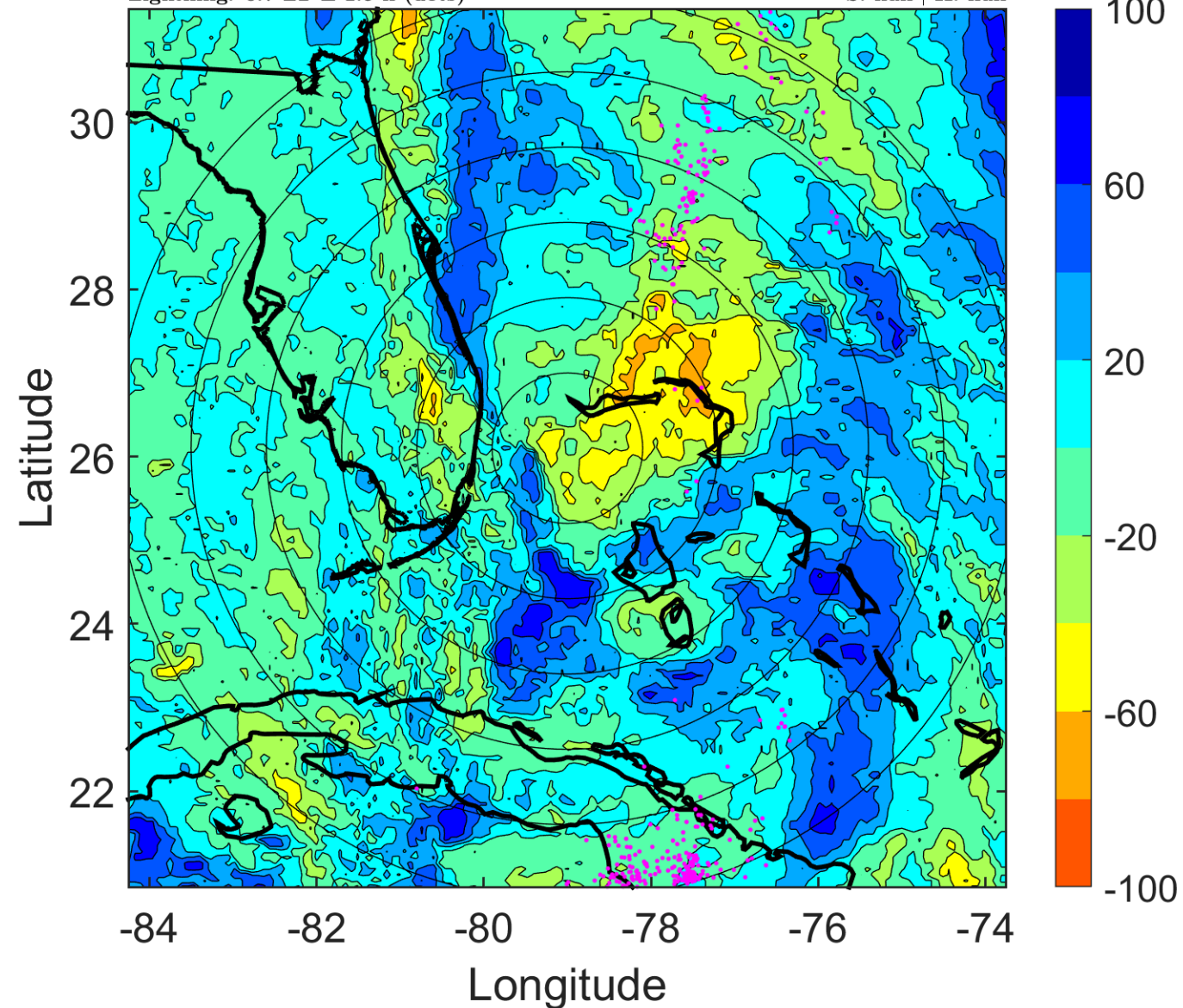
$\Delta$ t: 2010093006 (0.7 LT) - 2010093000 (18.7 LT)

Lightning: 0.7 LT  $\pm$  1.5 h (dots)

PT: SLCP | EA: INACT

16L (NICOLE) | 40 kt EX

S: null | H: null



### IR BT & Lightning

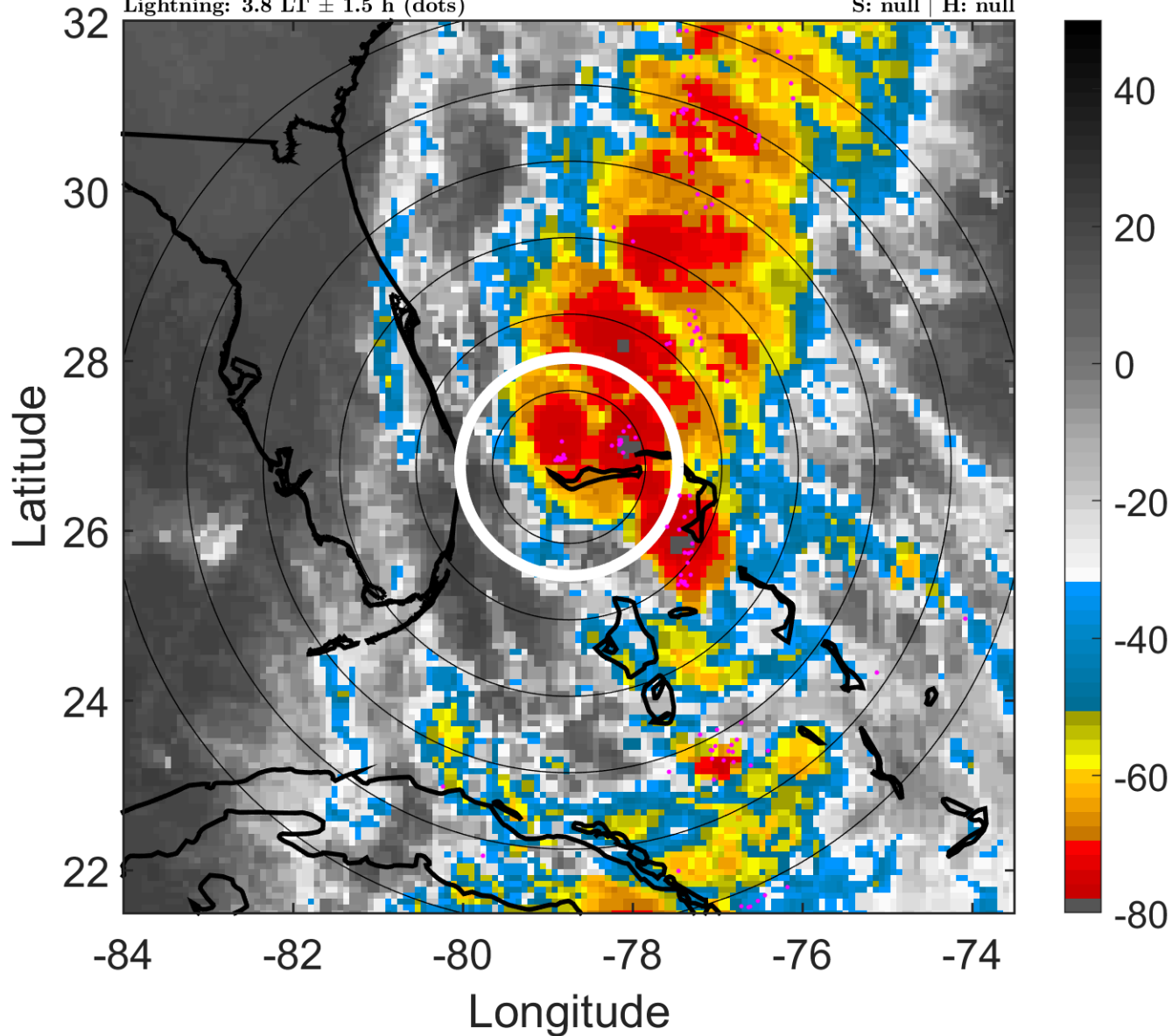
t: 2010093009 (3.8 LT)

Lightning: 3.8 LT  $\pm$  1.5 h (dots)

PT: SLCP | EA: INACT

16L (NICOLE) | 40 kt EX

S: null | H: null



### 6-h IR BT Differences & Lightning

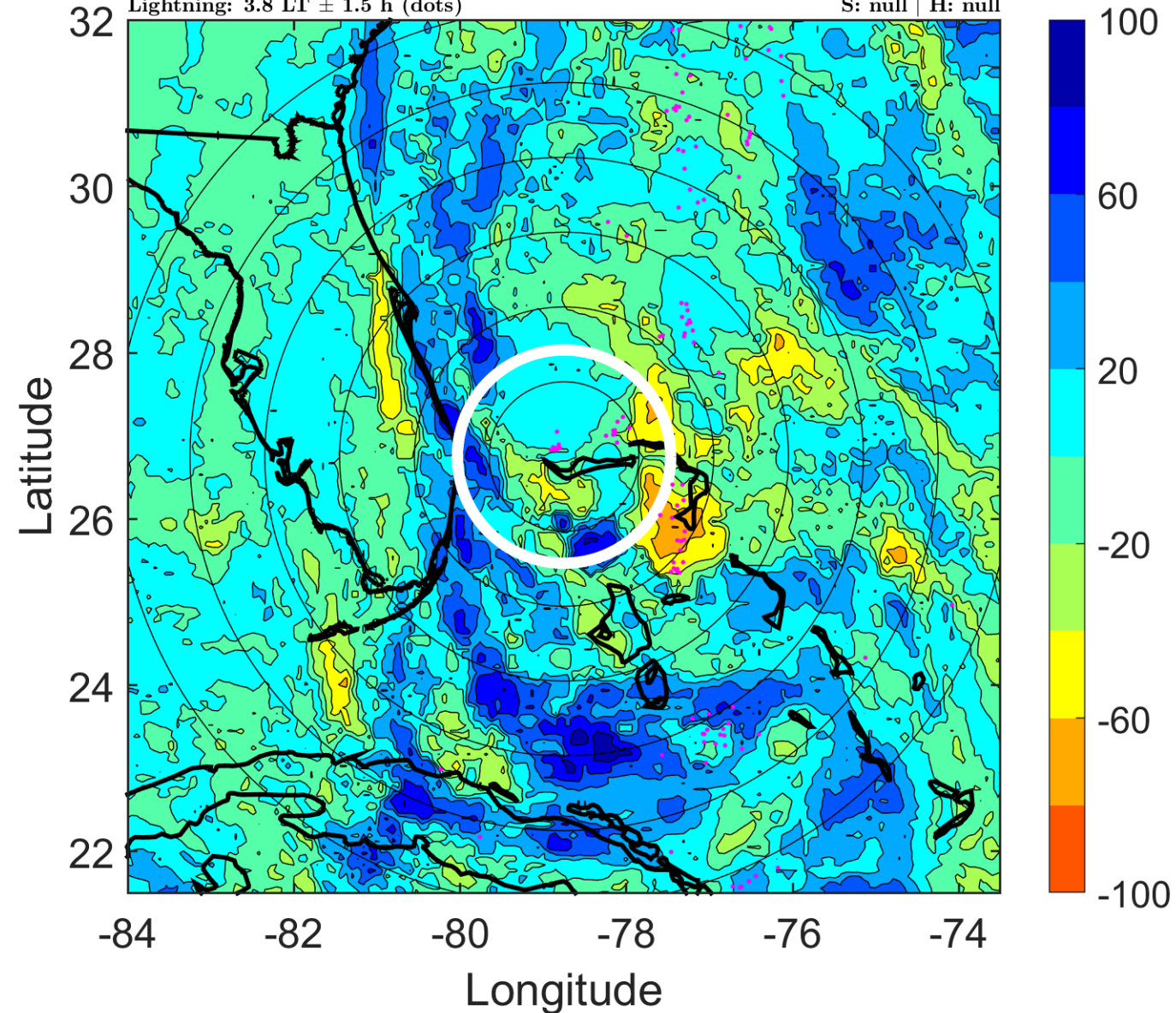
$\Delta$ t: 2010093009 (3.8 LT) - 2010093003 (21.7 LT)

Lightning: 3.8 LT  $\pm$  1.5 h (dots)

PT: SLCP | EA: INACT

16L (NICOLE) | 40 kt EX

S: null | H: null



### IR BT & Lightning

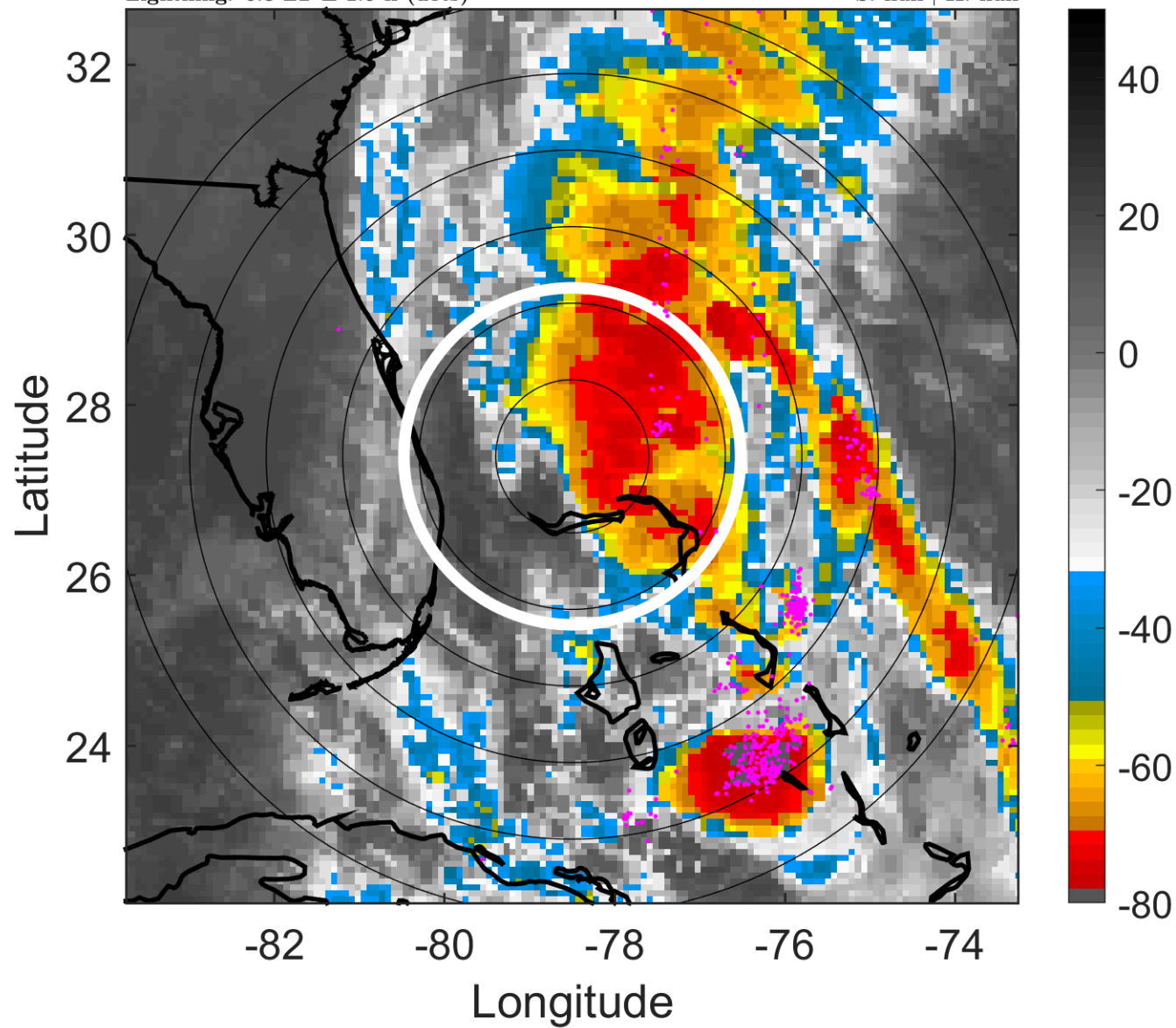
t: 2010093012 (6.8 LT)

Lightning: 6.8 LT  $\pm$  1.5 h (dots)

PT: SLCP | EA: INACT

16L (NICOLE) | 40 kt EX

S: null | H: null



### 6-h IR BT Differences & Lightning

$\Delta$ t: 2010093012 (6.8 LT) - 2010093006 (0.7 LT)

Lightning: 6.8 LT  $\pm$  1.5 h (dots)

PT: SLCP | EA: INACT

16L (NICOLE) | 40 kt EX

S: null | H: null

