

IR BT & Lightning

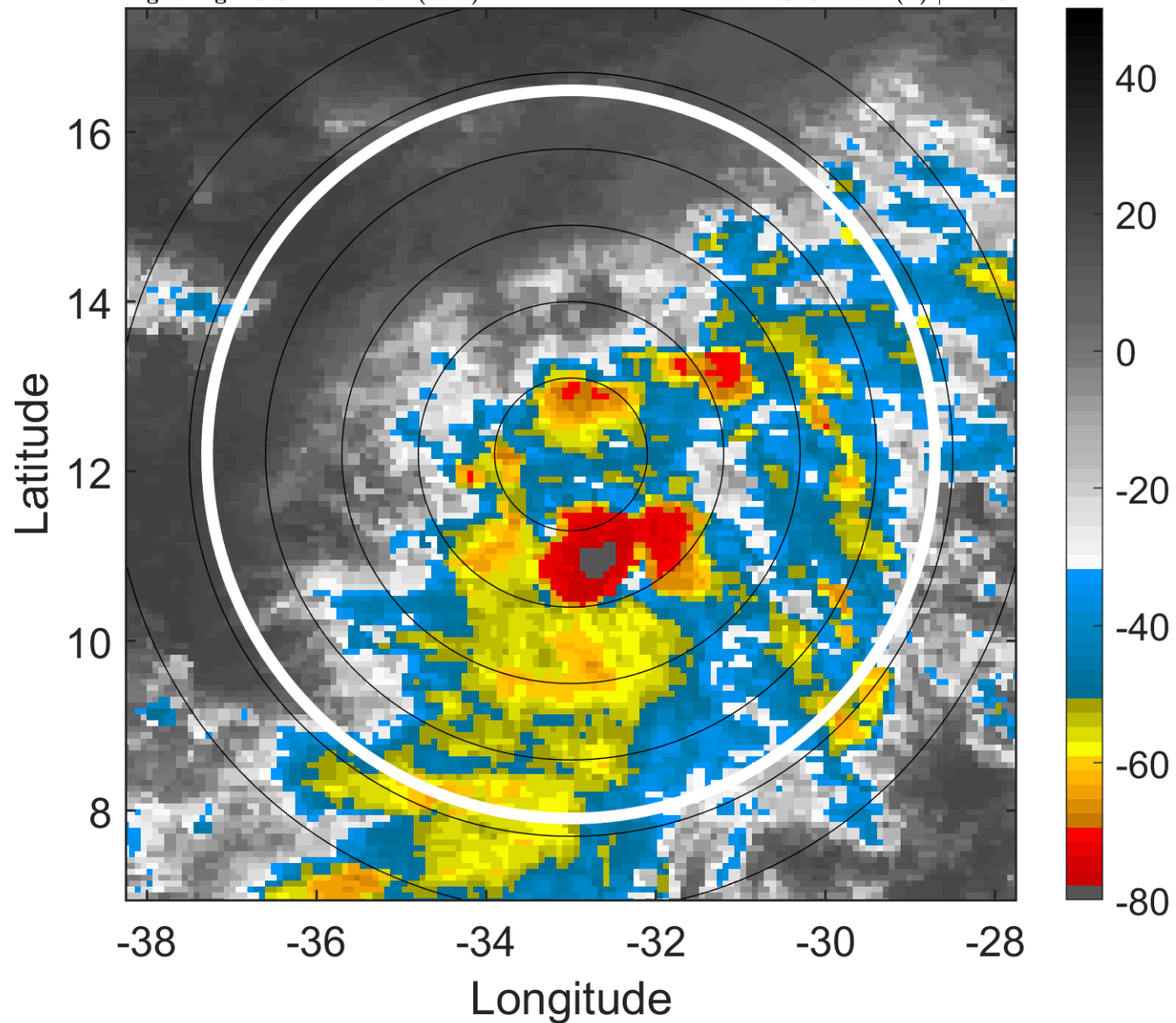
t: 2005093018 (15.8 LT)

Lightning: 15.8 LT \pm 1.5 h (dots)

PT: SLCP | EA: INACT

19L (NINETEEN) | 30 kt TD

S: 3 m s⁻¹ (L) | H: 48°



6-h IR BT Differences & Lightning

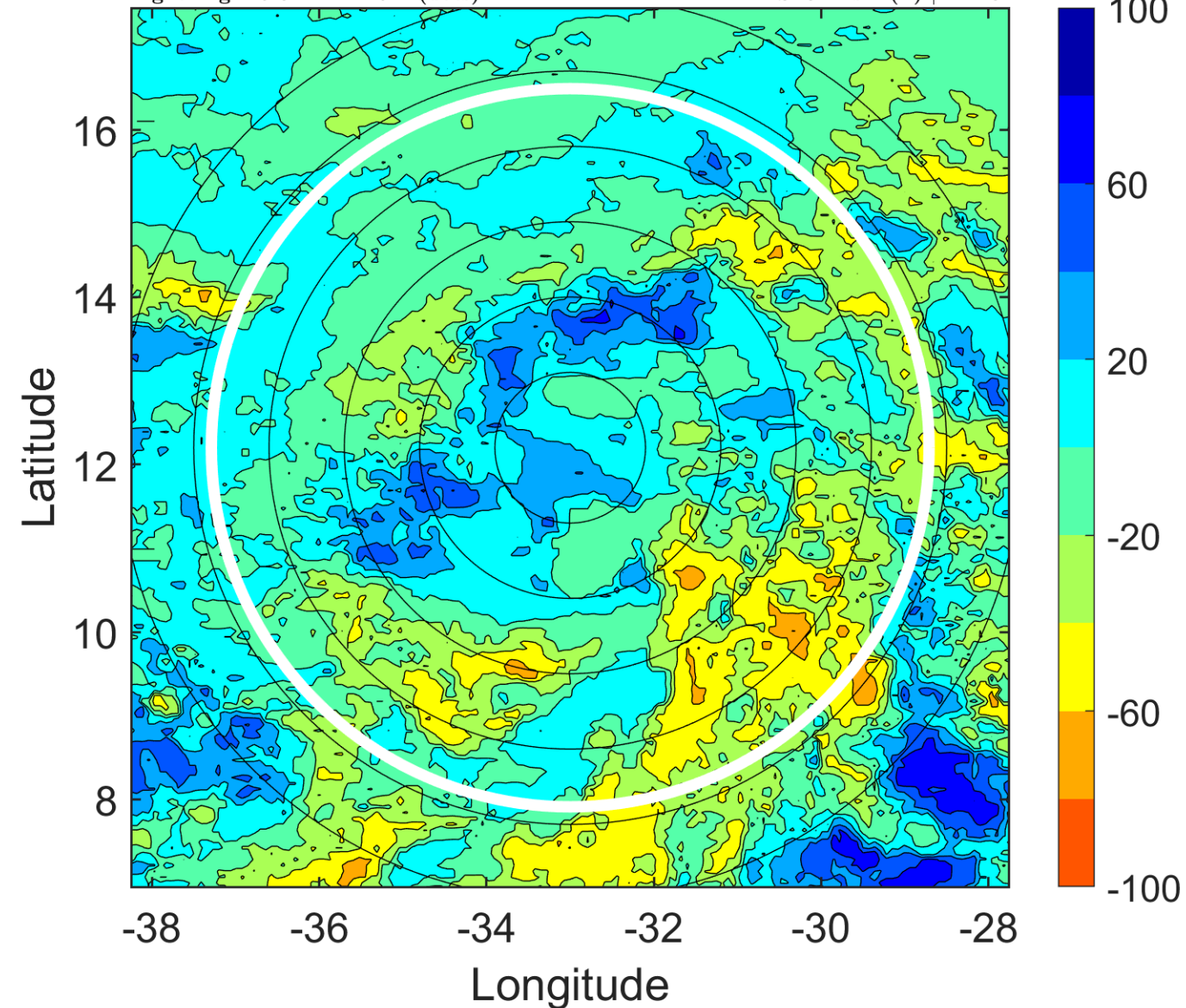
Δ t: 2005093018 (15.8 LT) - 2005093012 (9.8 LT)

Lightning: 15.8 LT \pm 1.5 h (dots)

PT: SLCP | EA: INACT

19L (NINETEEN) | 30 kt TD

S: 3 m s⁻¹ (L) | H: 48°



IR BT & Lightning

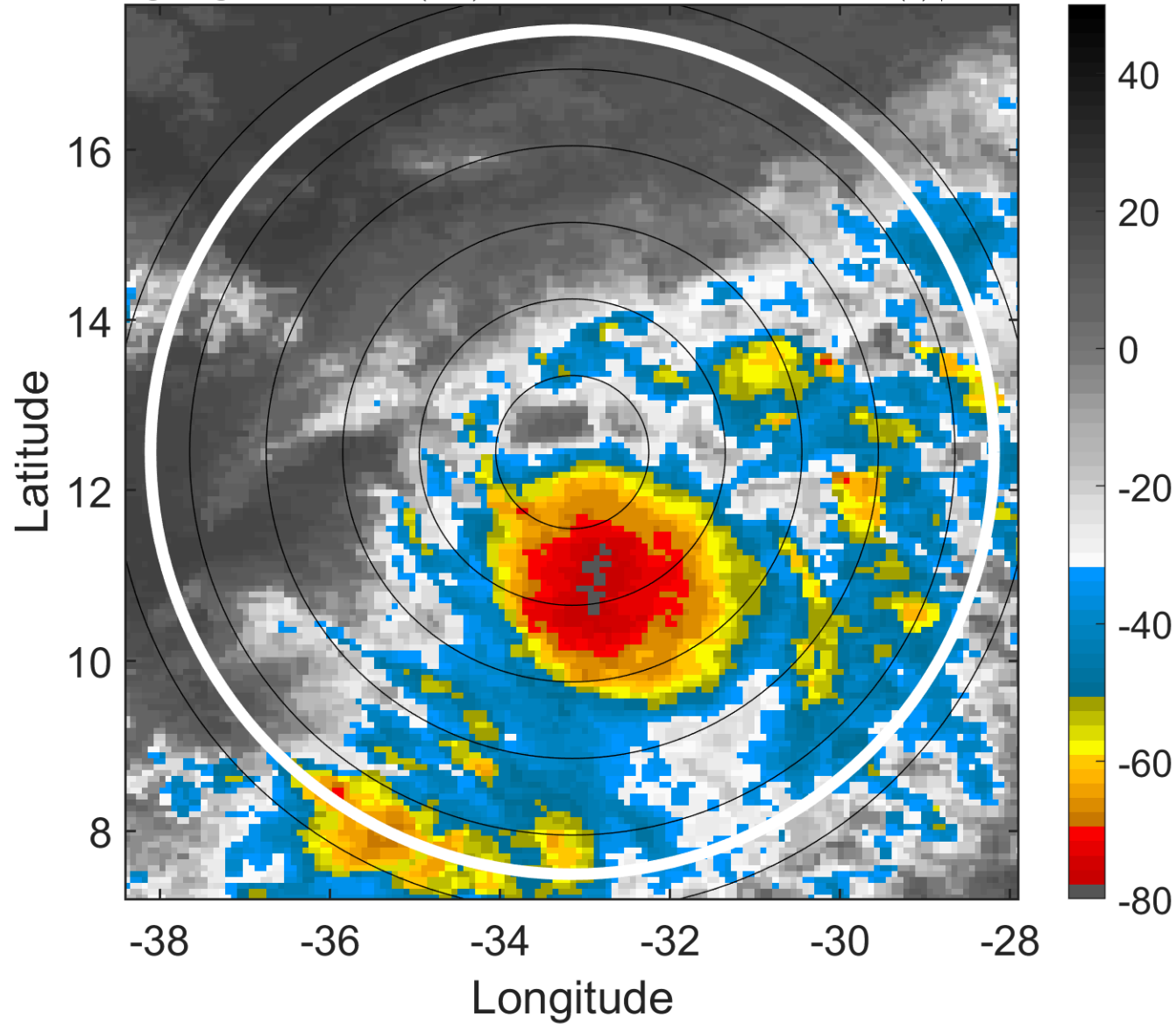
t: 2005093021 (18.8 LT)

Lightning: 18.8 LT \pm 1.5 h (dots)

PT: SLCP | EA: INACT

19L (NINETEEN) | 30 kt TD

S: 2.7 m s⁻¹ (L) | H: 66°



6-h IR BT Differences & Lightning

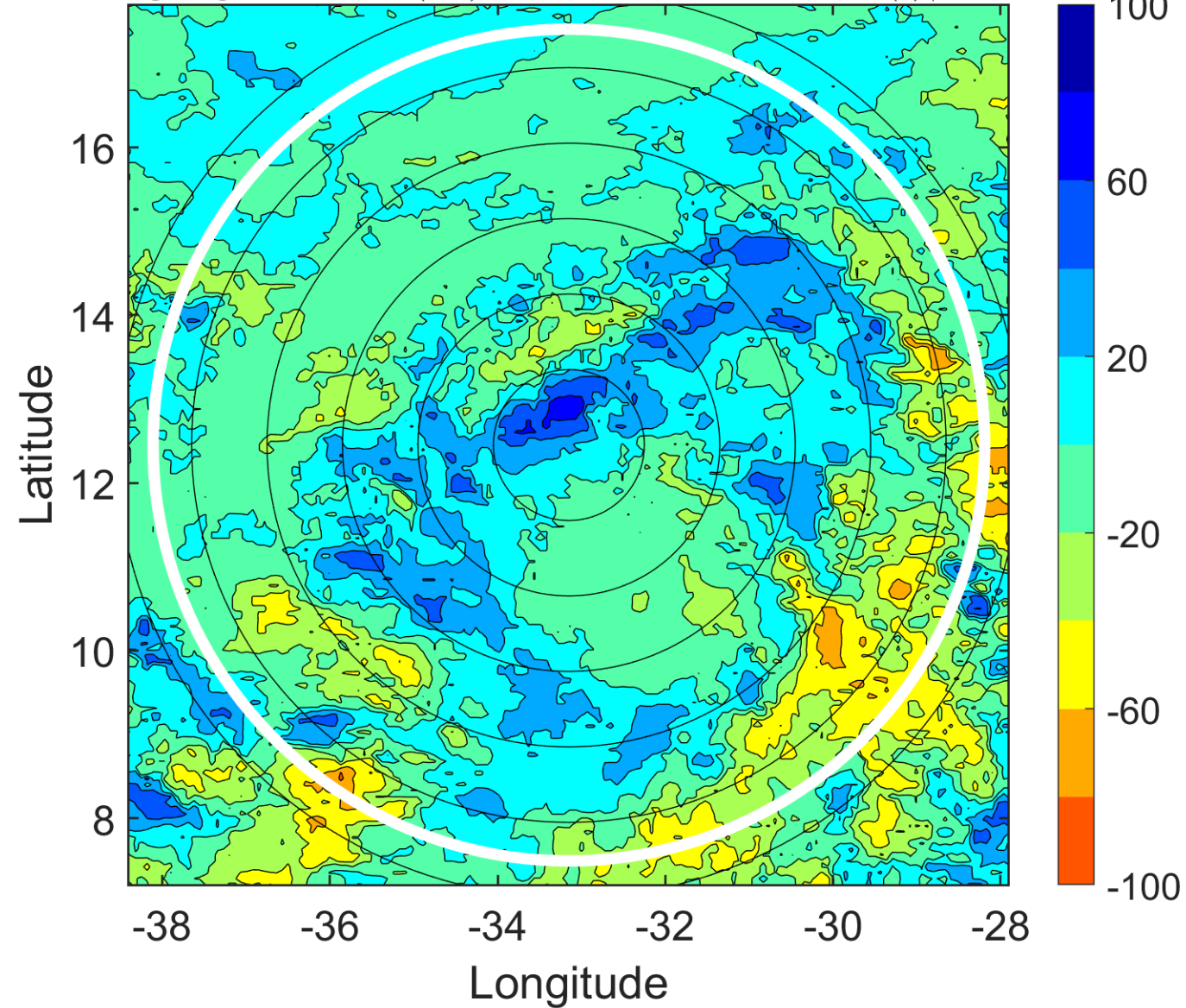
Δ t: 2005093021 (18.8 LT) - 2005093015 (12.8 LT)

Lightning: 18.8 LT \pm 1.5 h (dots)

PT: SLCP | EA: INACT

19L (NINETEEN) | 30 kt TD

S: 2.7 m s⁻¹ (L) | H: 66°



IR BT & Lightning

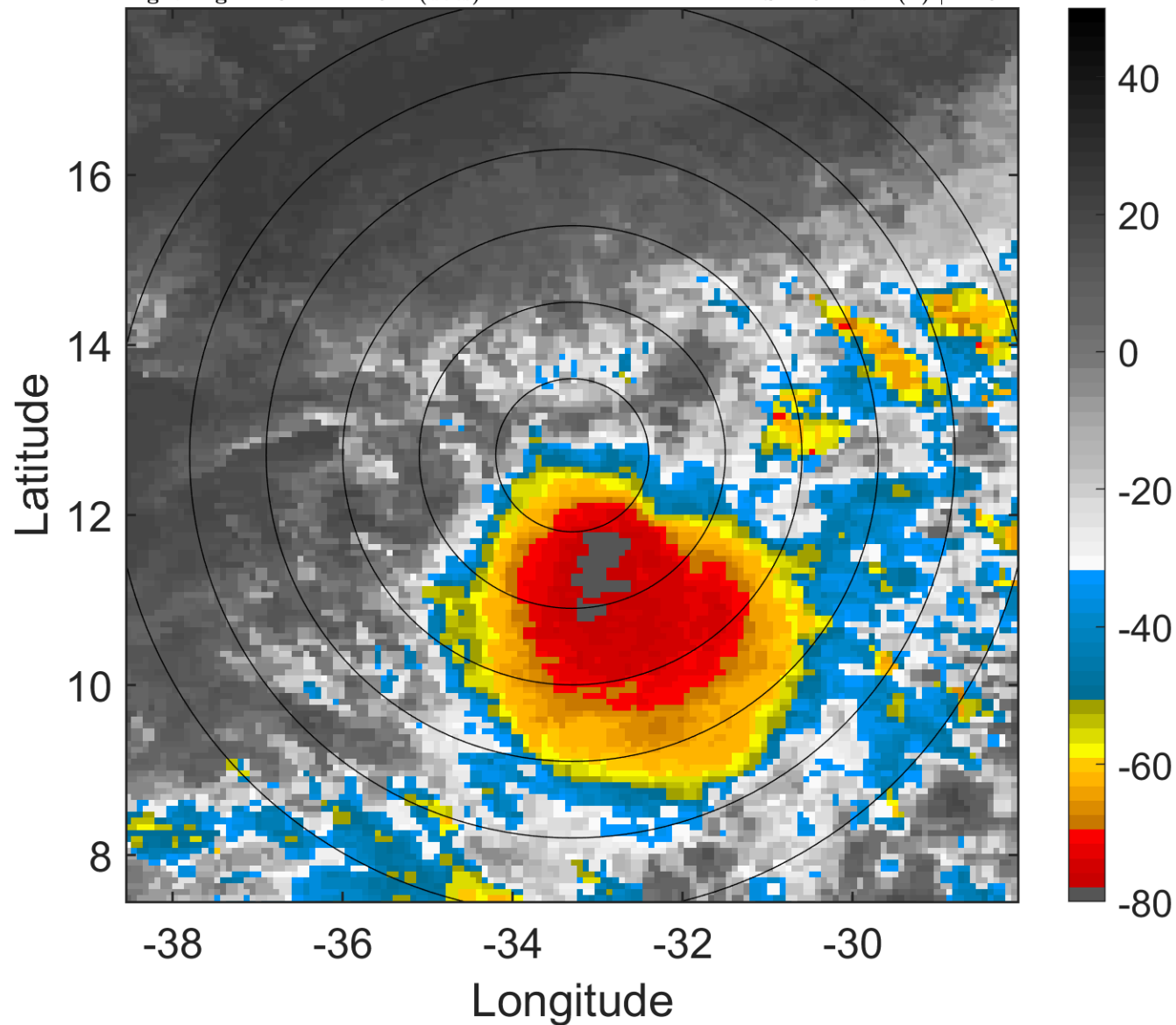
t: 2005100100 (21.8 LT)

Lightning: 21.8 LT \pm 1.5 h (dots)

PT: SLCP | EA: INACT

19L (NINETEEN) | 30 kt TD

S: 2.5 m s⁻¹ (L) | H: 84°



6-h IR BT Differences & Lightning

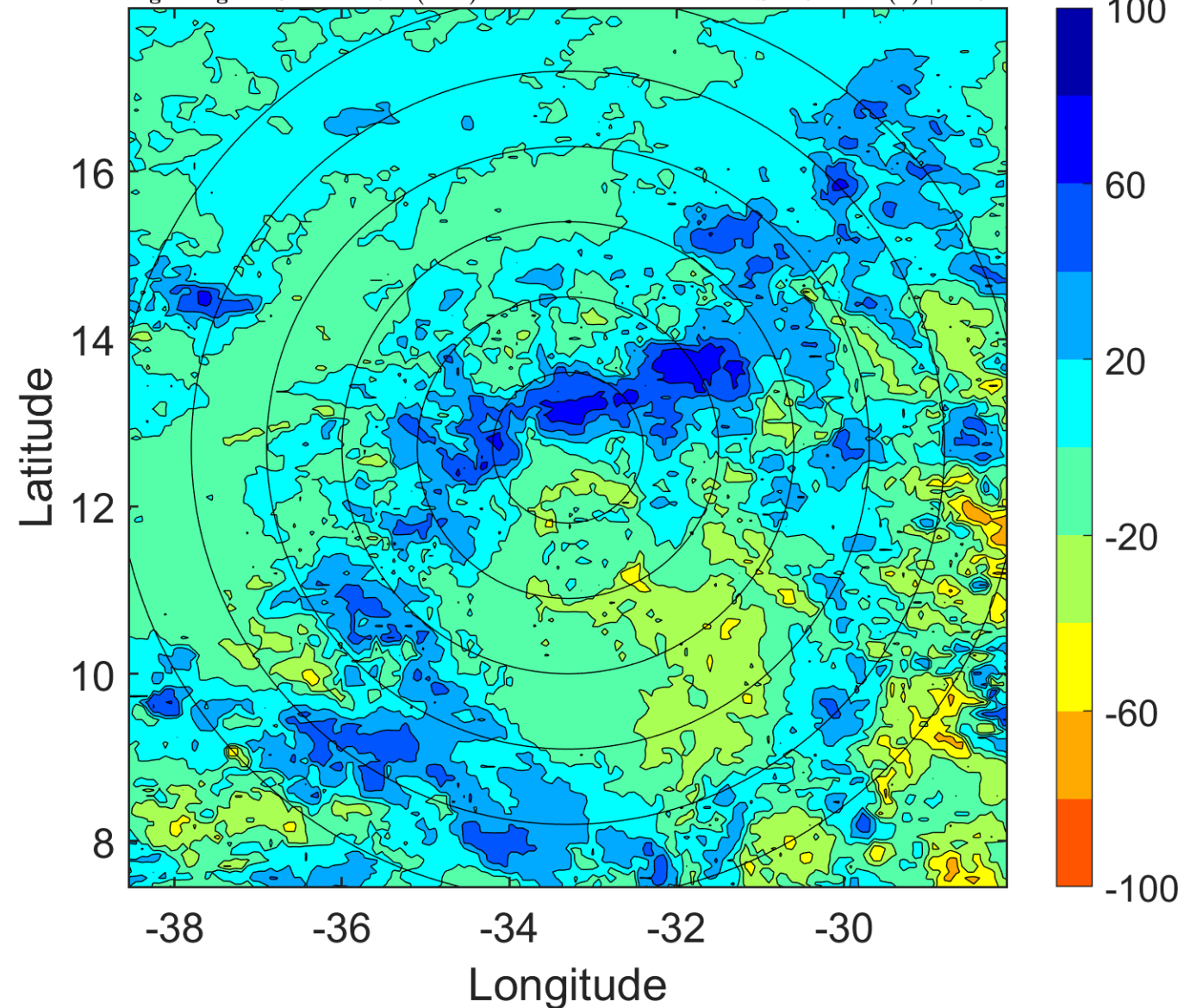
Δ t: 2005100100 (21.8 LT) - 2005093018 (15.8 LT)

Lightning: 21.8 LT \pm 1.5 h (dots)

PT: SLCP | EA: INACT

19L (NINETEEN) | 30 kt TD

S: 2.5 m s⁻¹ (L) | H: 84°



IR BT & Lightning

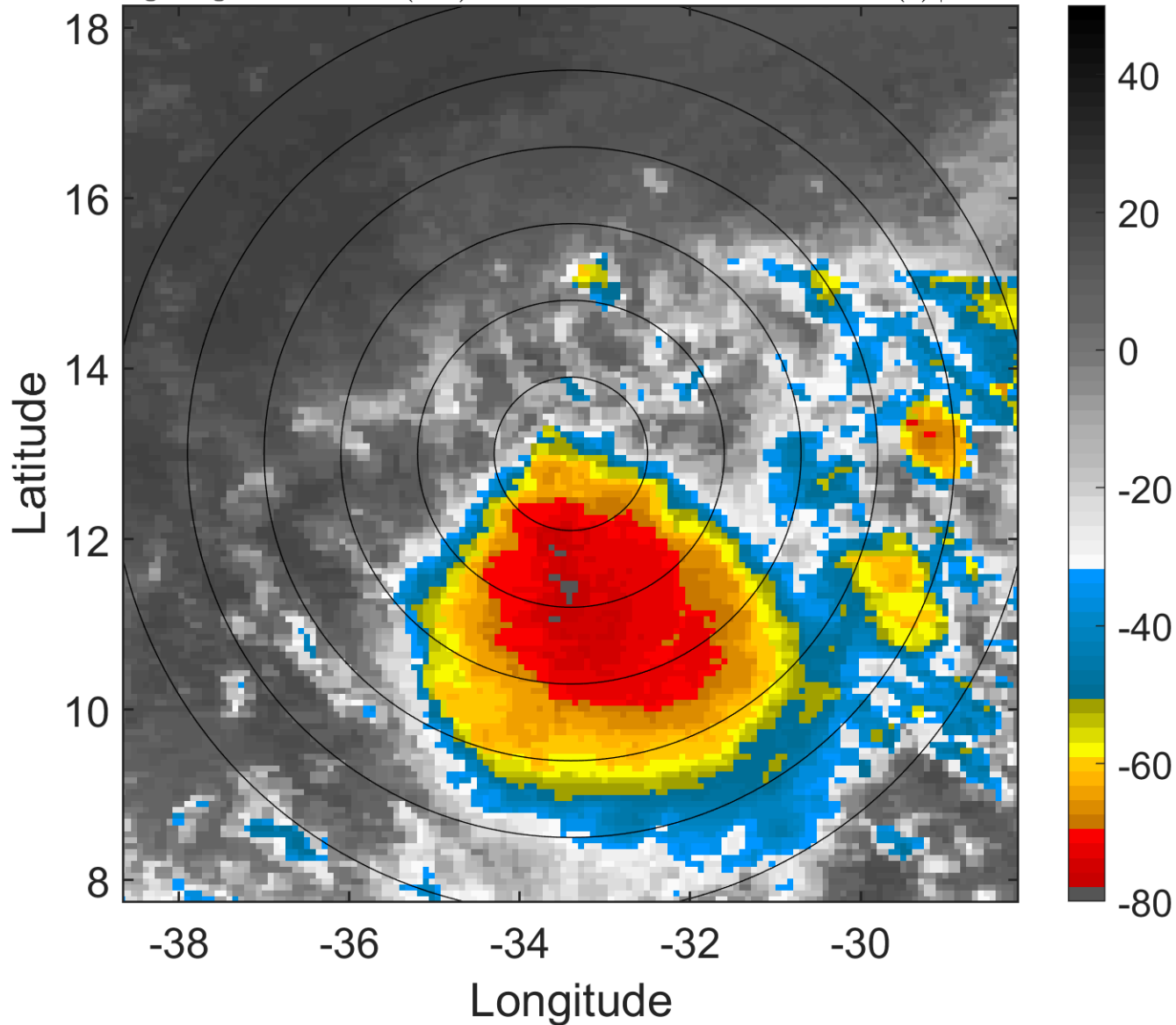
t: 2005100103 (0.8 LT)

Lightning: 0.8 LT \pm 1.5 h (dots)

PT: LLCP | EA: INACT

19L (NINETEEN) | 30 kt TD

S: 1.8 m s⁻¹ (L) | H: 66°



6-h IR BT Differences & Lightning

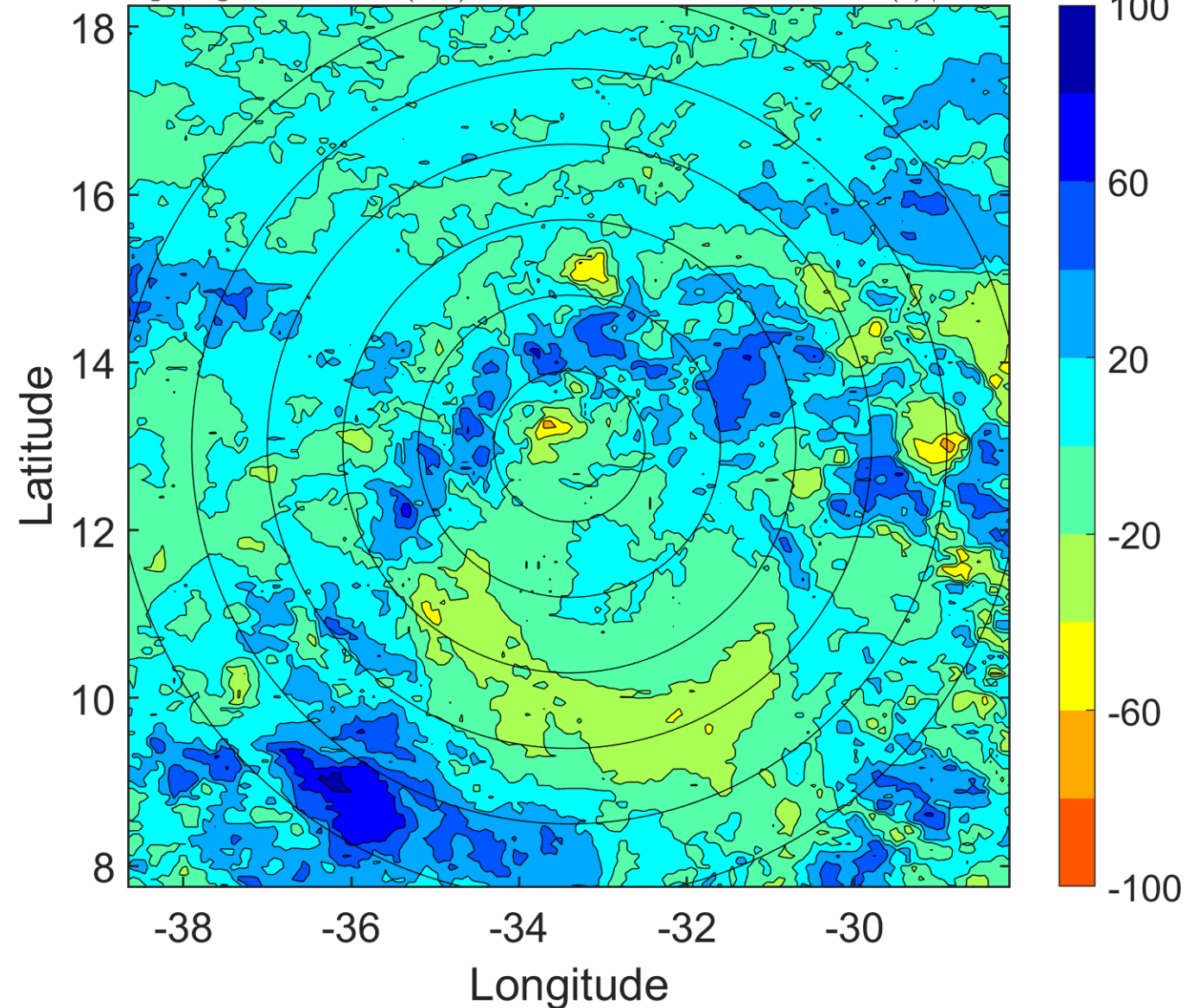
Δ t: 2005100103 (0.8 LT) - 2005093021 (18.8 LT)

Lightning: 0.8 LT \pm 1.5 h (dots)

PT: LLCP | EA: INACT

19L (NINETEEN) | 30 kt TD

S: 1.8 m s⁻¹ (L) | H: 66°



IR BT & Lightning

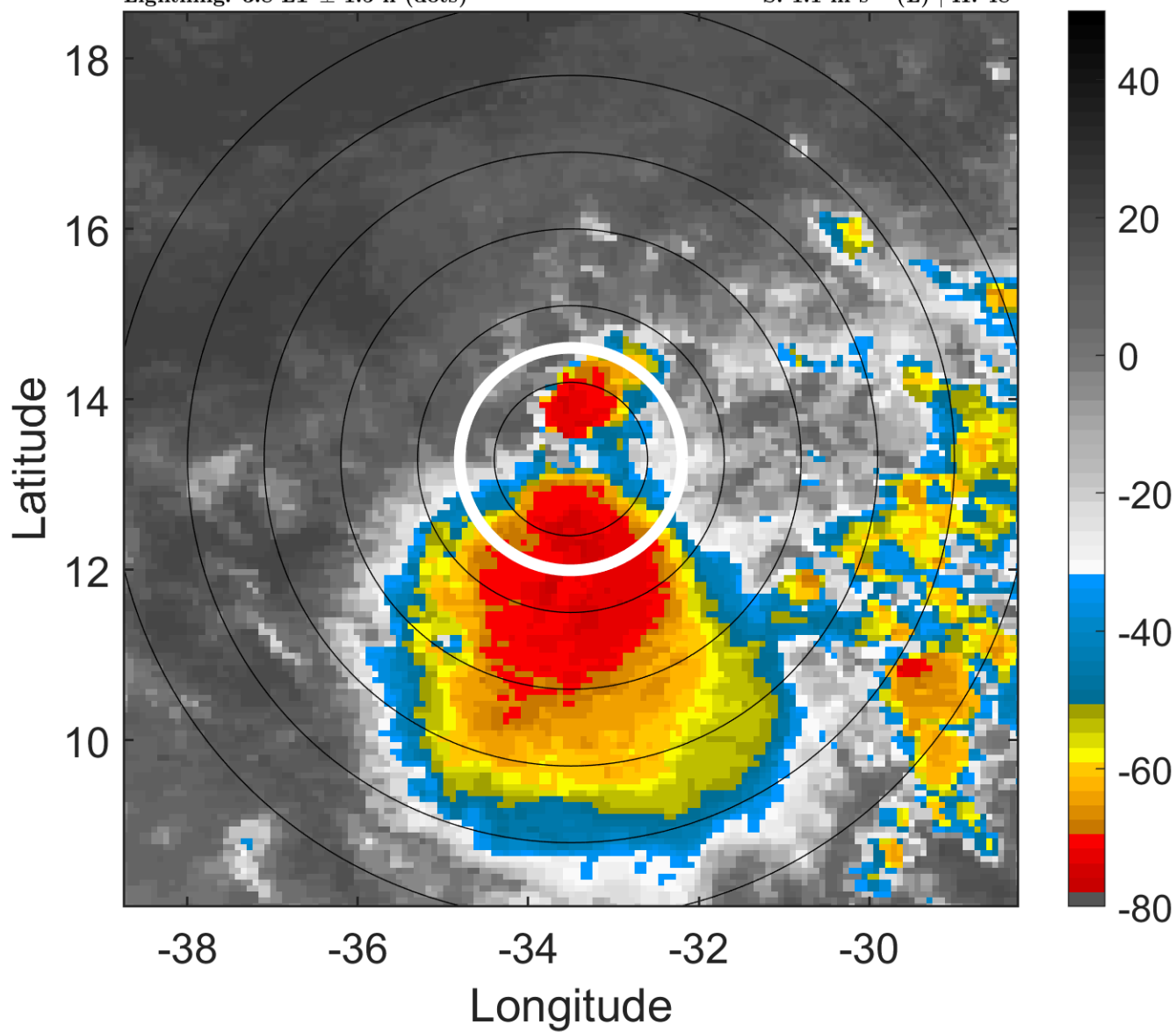
t: 2005100106 (3.8 LT)

Lightning: 3.8 LT \pm 1.5 h (dots)

PT: LLCP | EA: INACT

19L (NINETEEN) | 30 kt TD

S: 1.1 m s⁻¹ (L) | H: 48°



6-h IR BT Differences & Lightning

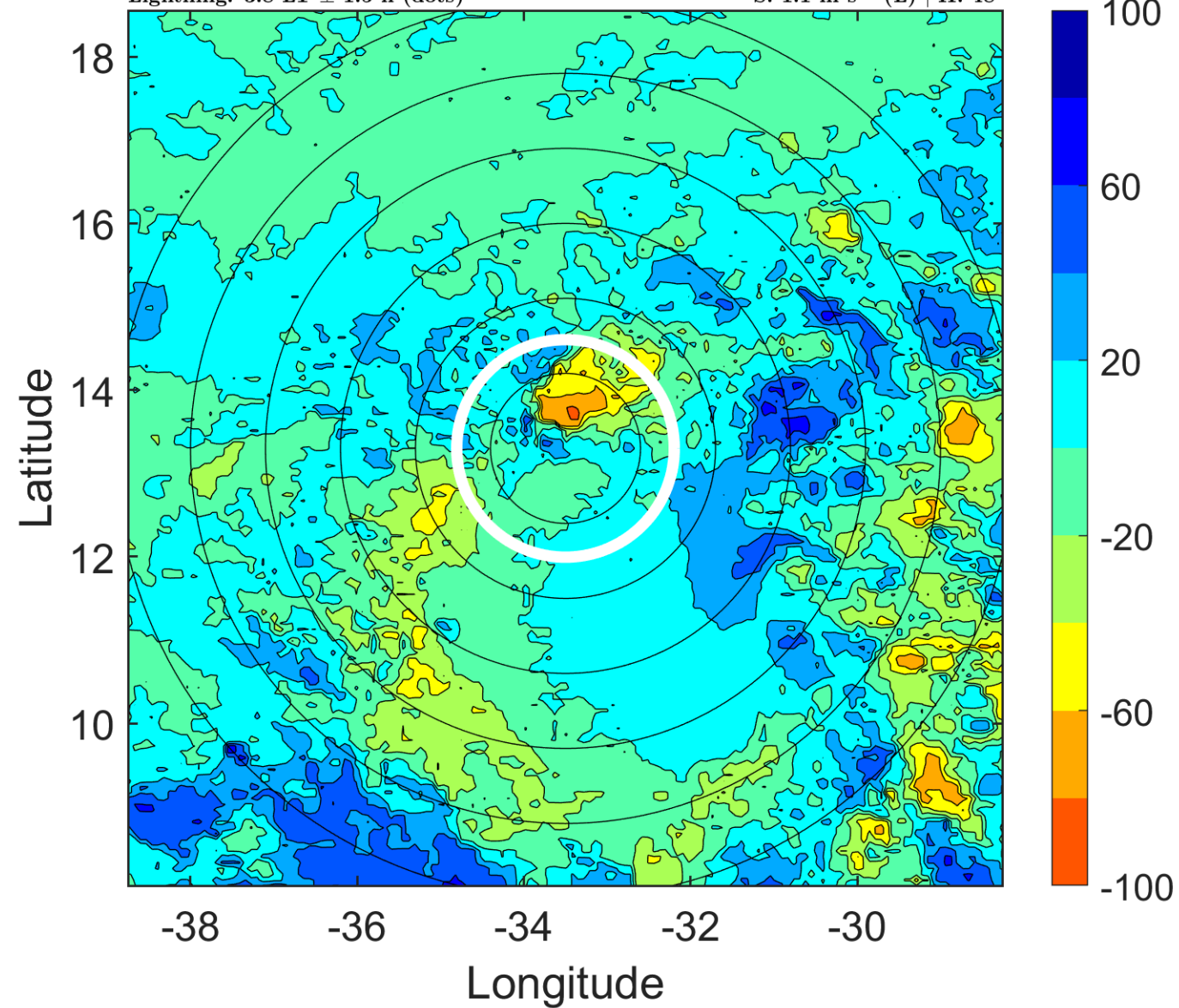
Δ t: 2005100106 (3.8 LT) - 2005100100 (21.8 LT)

Lightning: 3.8 LT \pm 1.5 h (dots)

PT: LLCP | EA: INACT

19L (NINETEEN) | 30 kt TD

S: 1.1 m s⁻¹ (L) | H: 48°



IR BT & Lightning

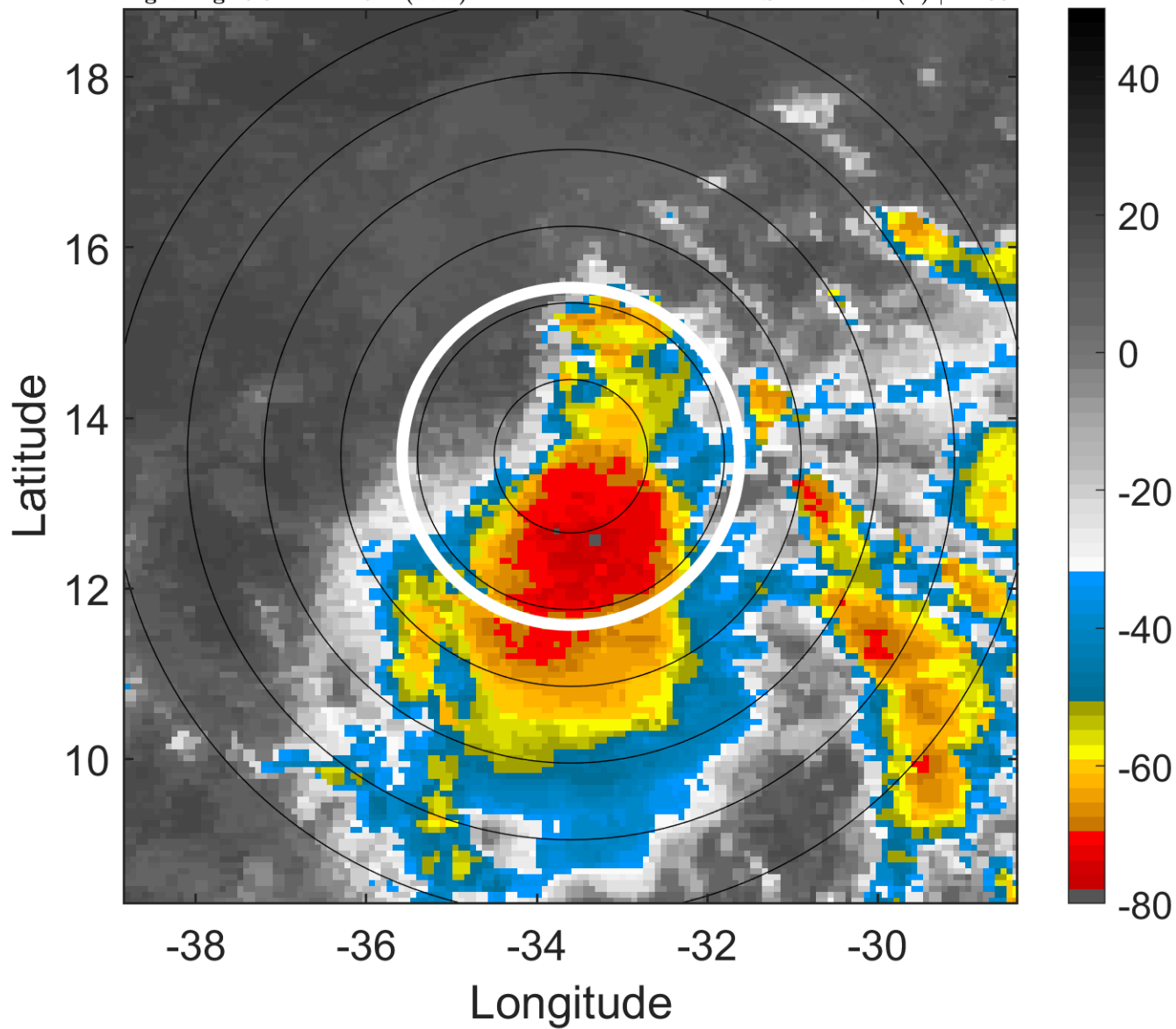
t: 2005100109 (6.8 LT)

Lightning: 6.8 LT \pm 1.5 h (dots)

PT: LLCP | EA: INACT

19L (NINETEEN) | 30 kt TD

S: 1.1 m s⁻¹ (L) | H: 83°



6-h IR BT Differences & Lightning

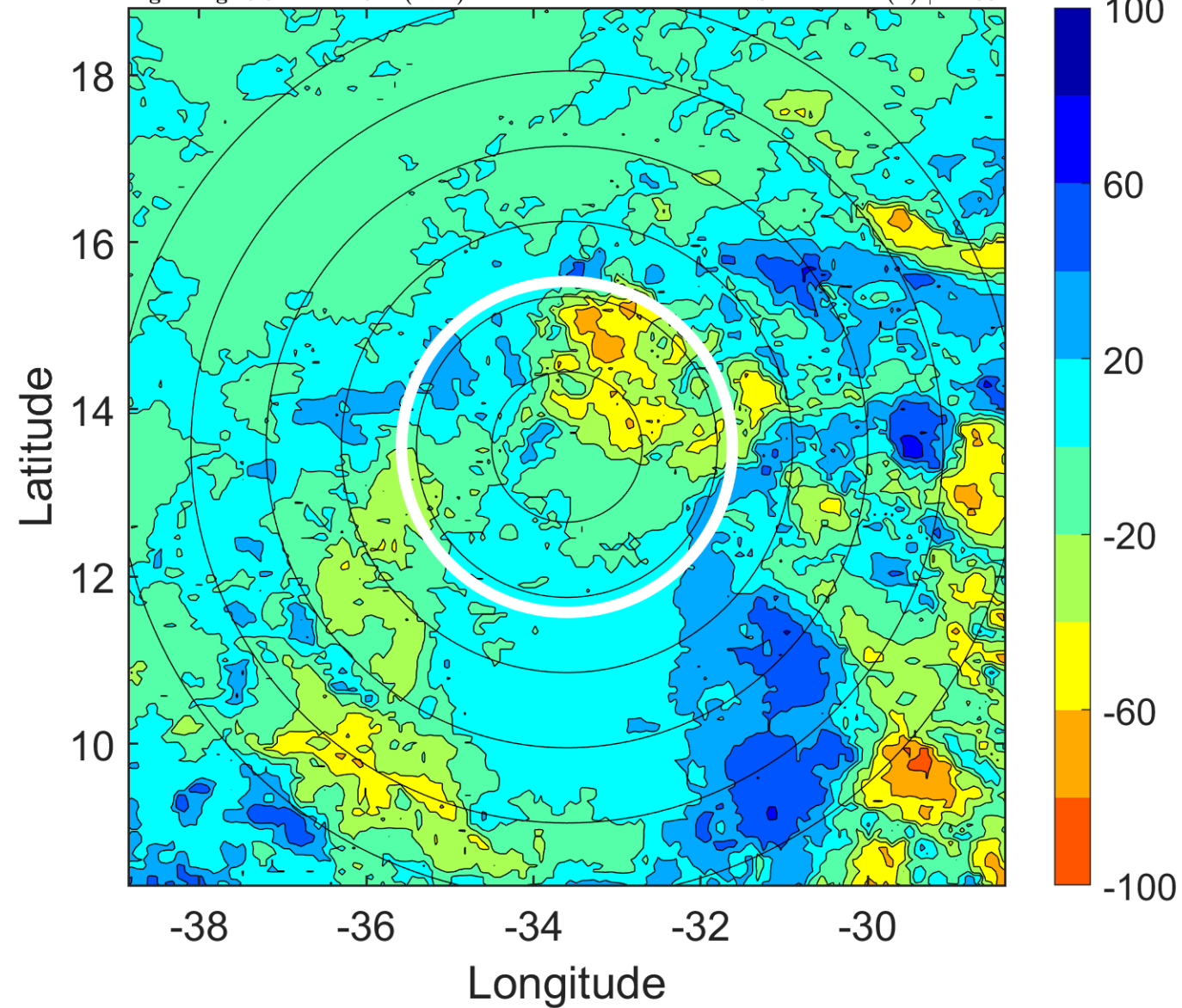
Δ t: 2005100109 (6.8 LT) - 2005100103 (0.8 LT)

Lightning: 6.8 LT \pm 1.5 h (dots)

PT: LLCP | EA: INACT

19L (NINETEEN) | 30 kt TD

S: 1.1 m s⁻¹ (L) | H: 83°



IR BT & Lightning

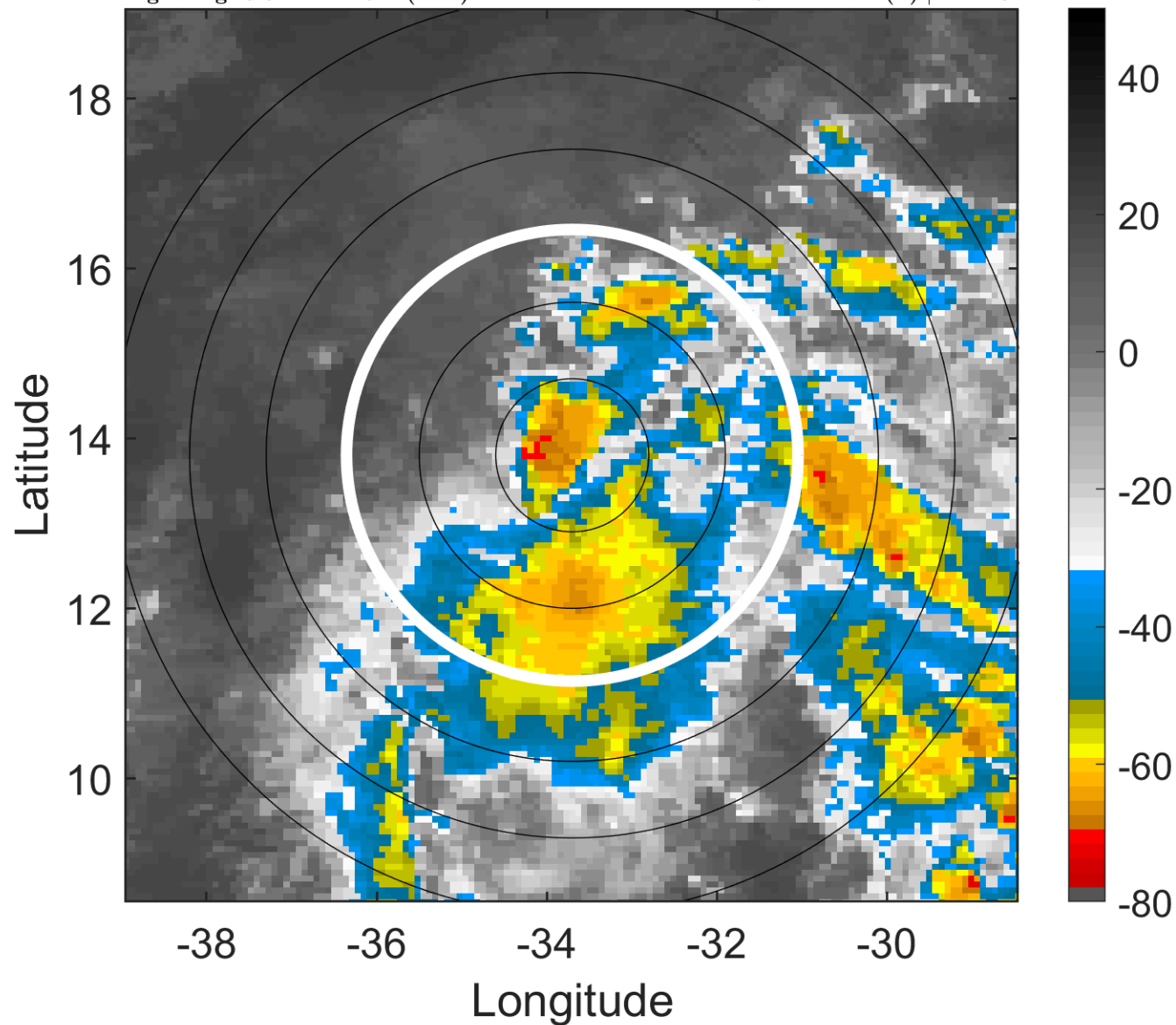
t: 2005100112 (9.8 LT)

Lightning: 9.8 LT \pm 1.5 h (dots)

PT: LLCP | EA: INACT

19L (NINETEEN) | 30 kt TD

S: 1.2 m s⁻¹ (L) | H: 118°



6-h IR BT Differences & Lightning

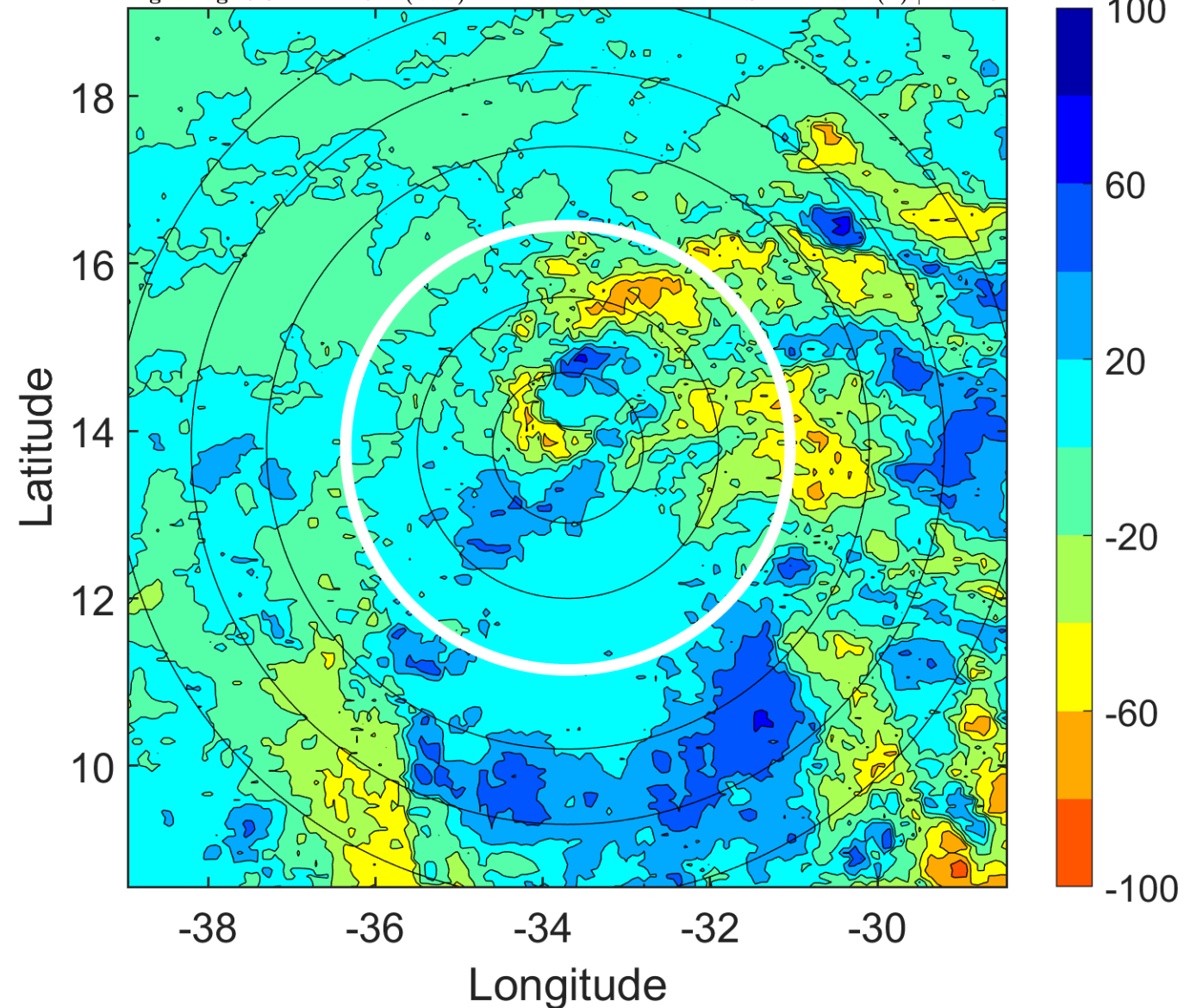
Δ t: 2005100112 (9.8 LT) - 2005100106 (3.8 LT)

Lightning: 9.8 LT \pm 1.5 h (dots)

PT: LLCP | EA: INACT

19L (NINETEEN) | 30 kt TD

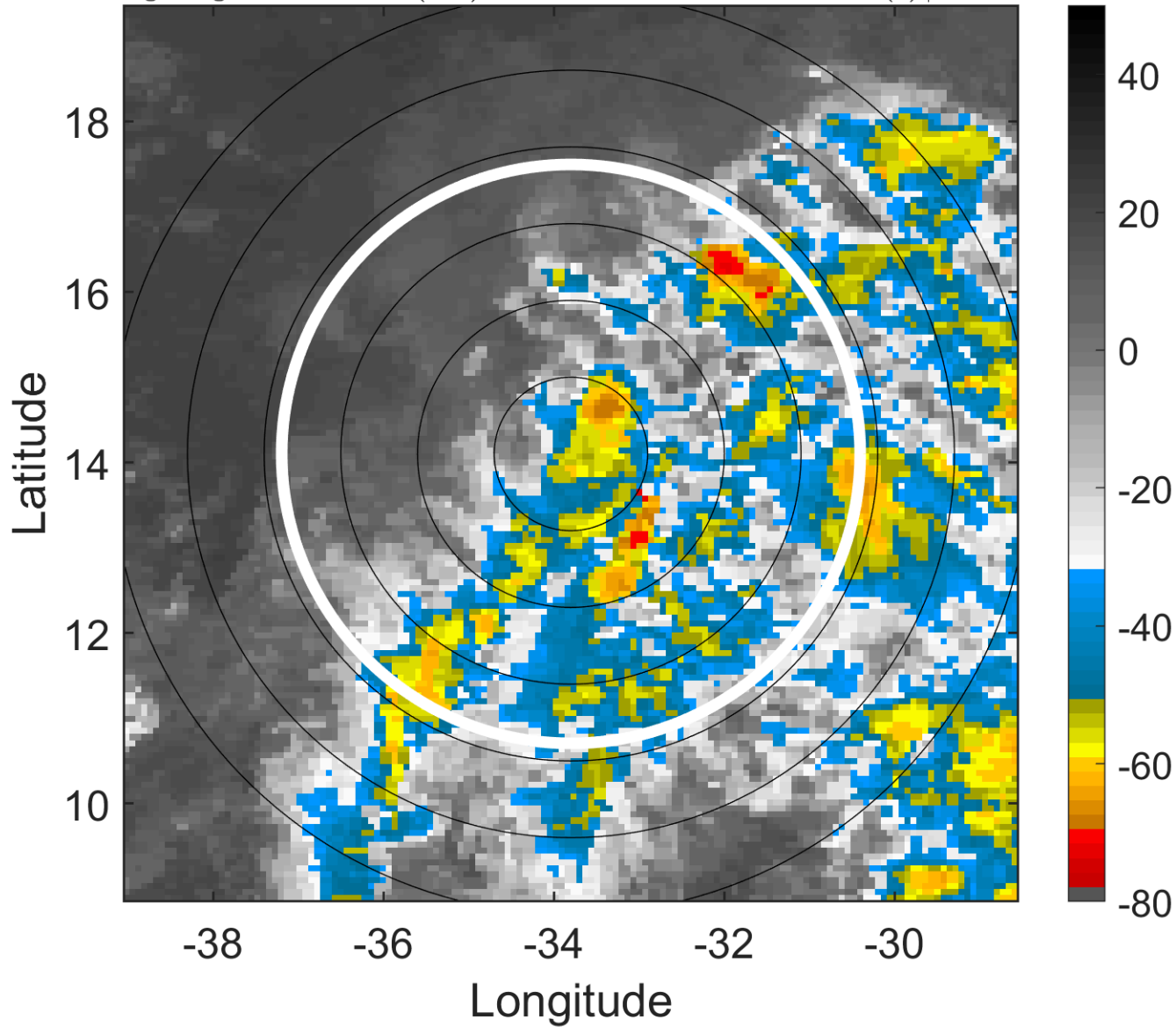
S: 1.2 m s⁻¹ (L) | H: 118°



IR BT & Lightning

t: 2005100115 (12.7 LT)
Lightning: 12.7 LT \pm 1.5 h (dots)

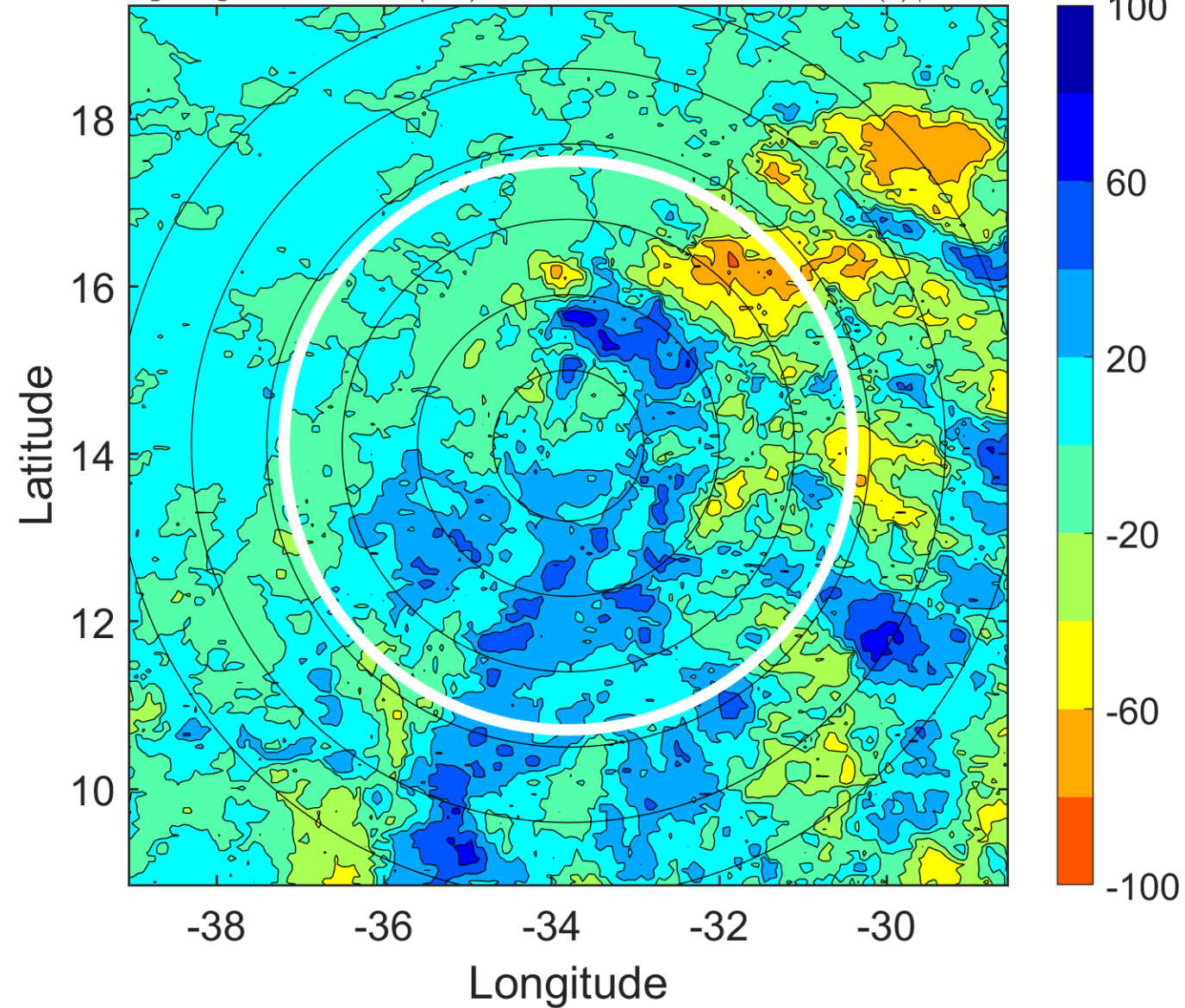
PT: LLCP | EA: INACT
19L (NINETEEN) | 30 kt TD
S: 3.5 m s⁻¹ (L) | H: 108°



6-h IR BT Differences & Lightning

Δ t: 2005100115 (12.7 LT) - 2005100109 (6.8 LT)
Lightning: 12.7 LT \pm 1.5 h (dots)

PT: LLCP | EA: INACT
19L (NINETEEN) | 30 kt TD
S: 3.5 m s⁻¹ (L) | H: 108°



IR BT & Lightning

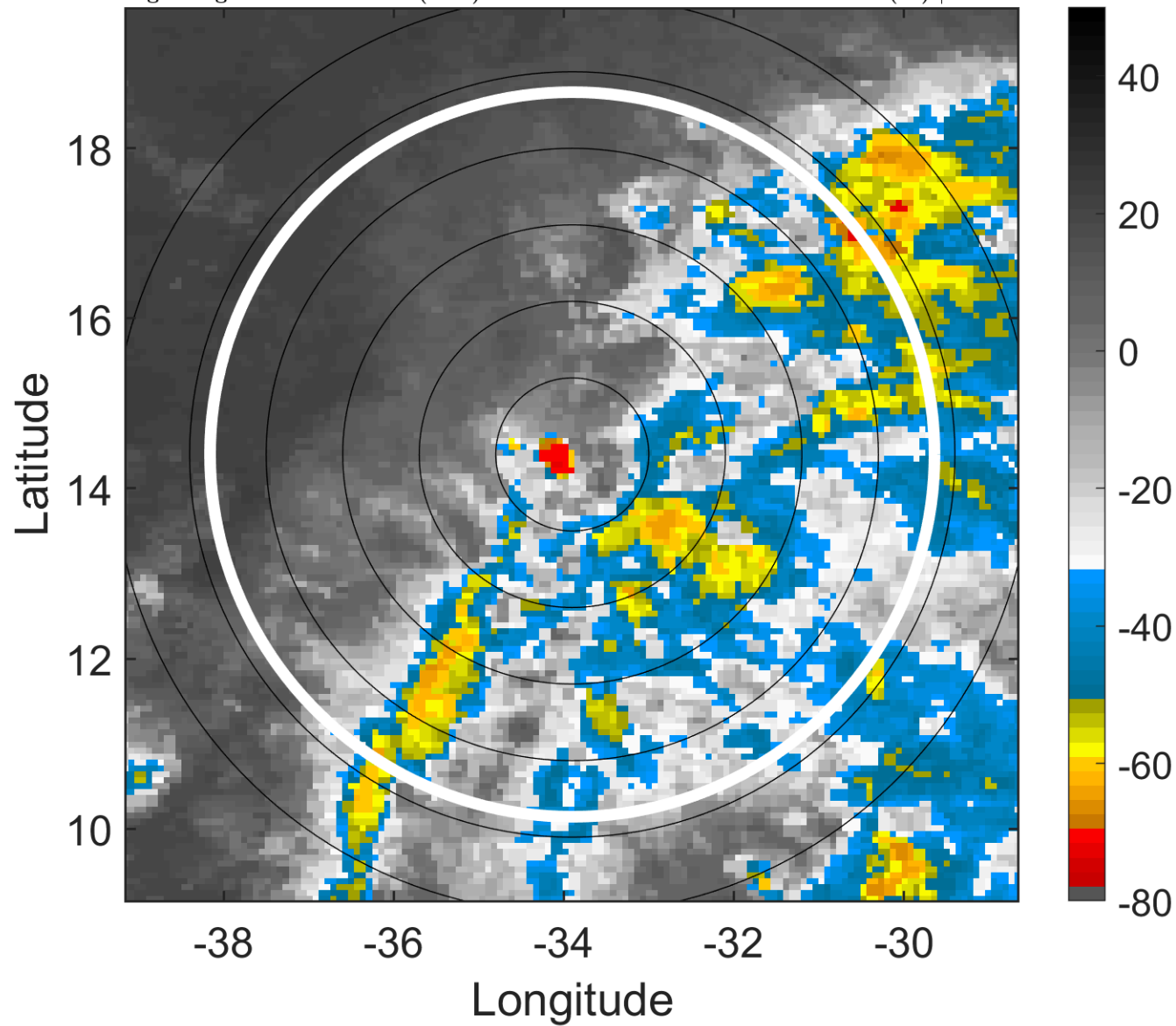
t: 2005100118 (15.7 LT)

Lightning: 15.7 LT \pm 1.5 h (dots)

PT: LLCP | EA: INACT

19L (NINETEEN) | 30 kt TD

S: 5.9 m s⁻¹ (M) | H: 98°



6-h IR BT Differences & Lightning

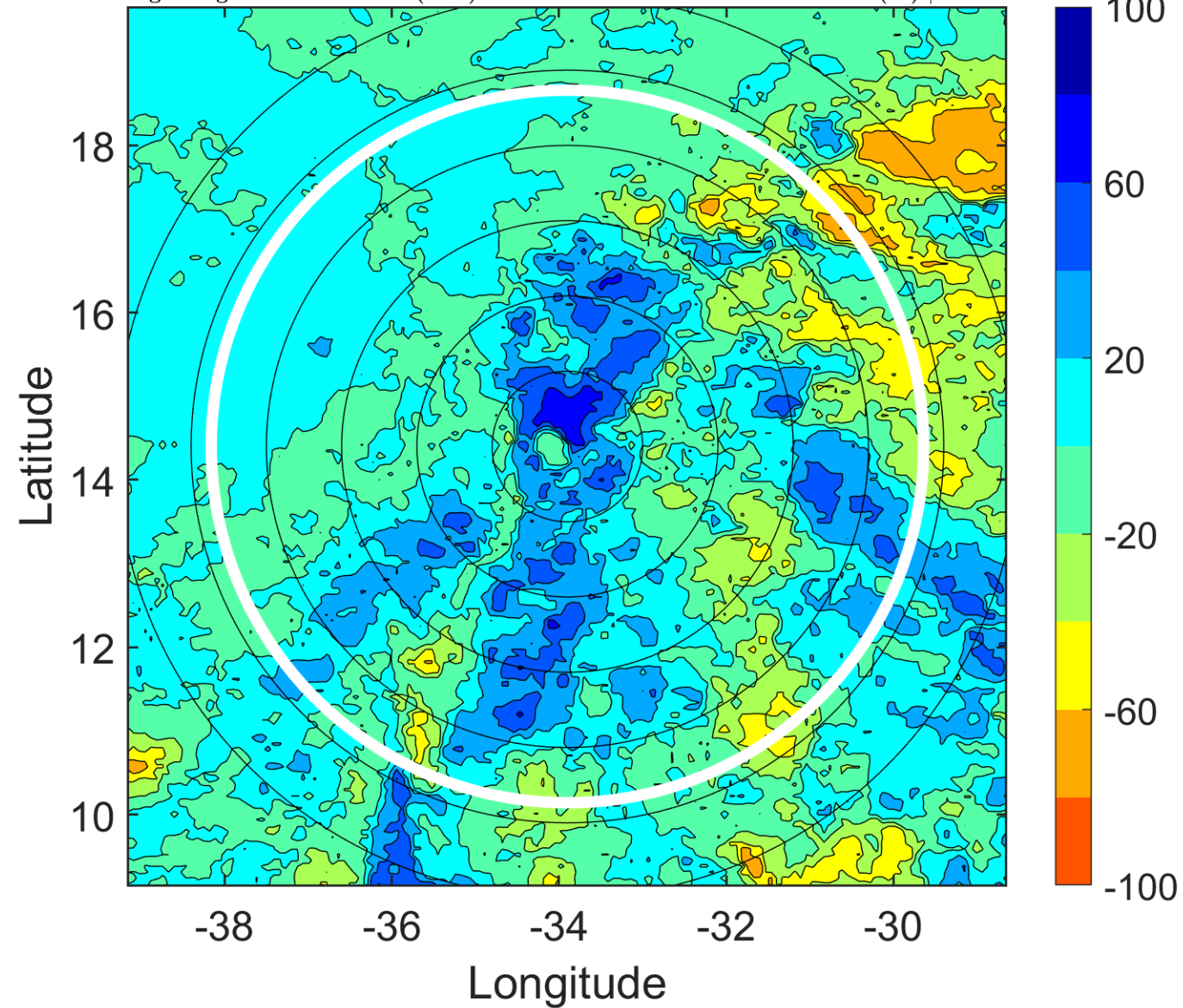
Δ t: 2005100118 (15.7 LT) - 2005100112 (9.8 LT)

Lightning: 15.7 LT \pm 1.5 h (dots)

PT: LLCP | EA: INACT

19L (NINETEEN) | 30 kt TD

S: 5.9 m s⁻¹ (M) | H: 98°



IR BT & Lightning

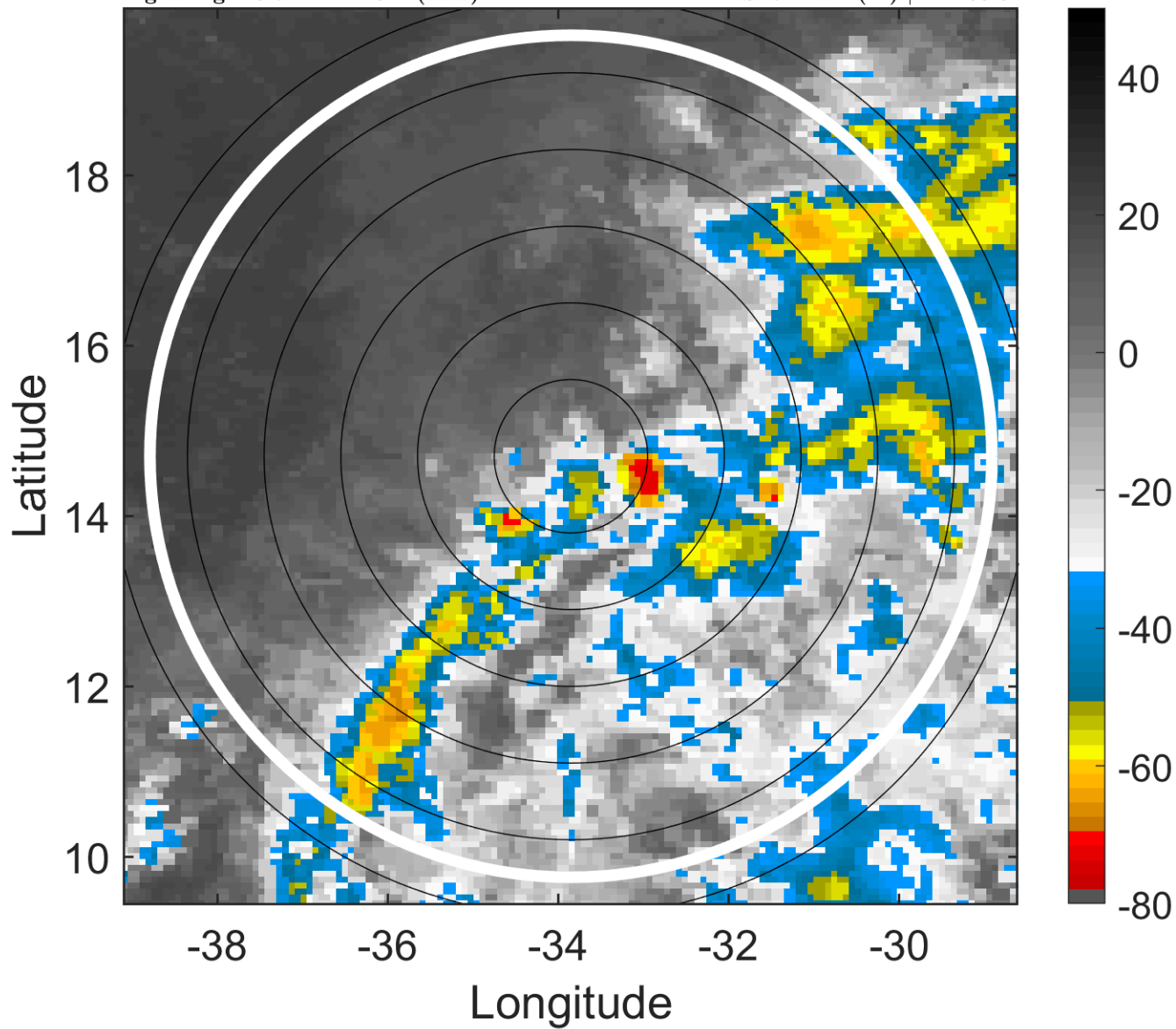
t: 2005100121 (18.7 LT)

Lightning: 18.7 LT \pm 1.5 h (dots)

PT: LLCP | EA: INACT

19L (NINETEEN) | 30 kt TD

S: 7 m s⁻¹ (M) | H: 103.5°



6-h IR BT Differences & Lightning

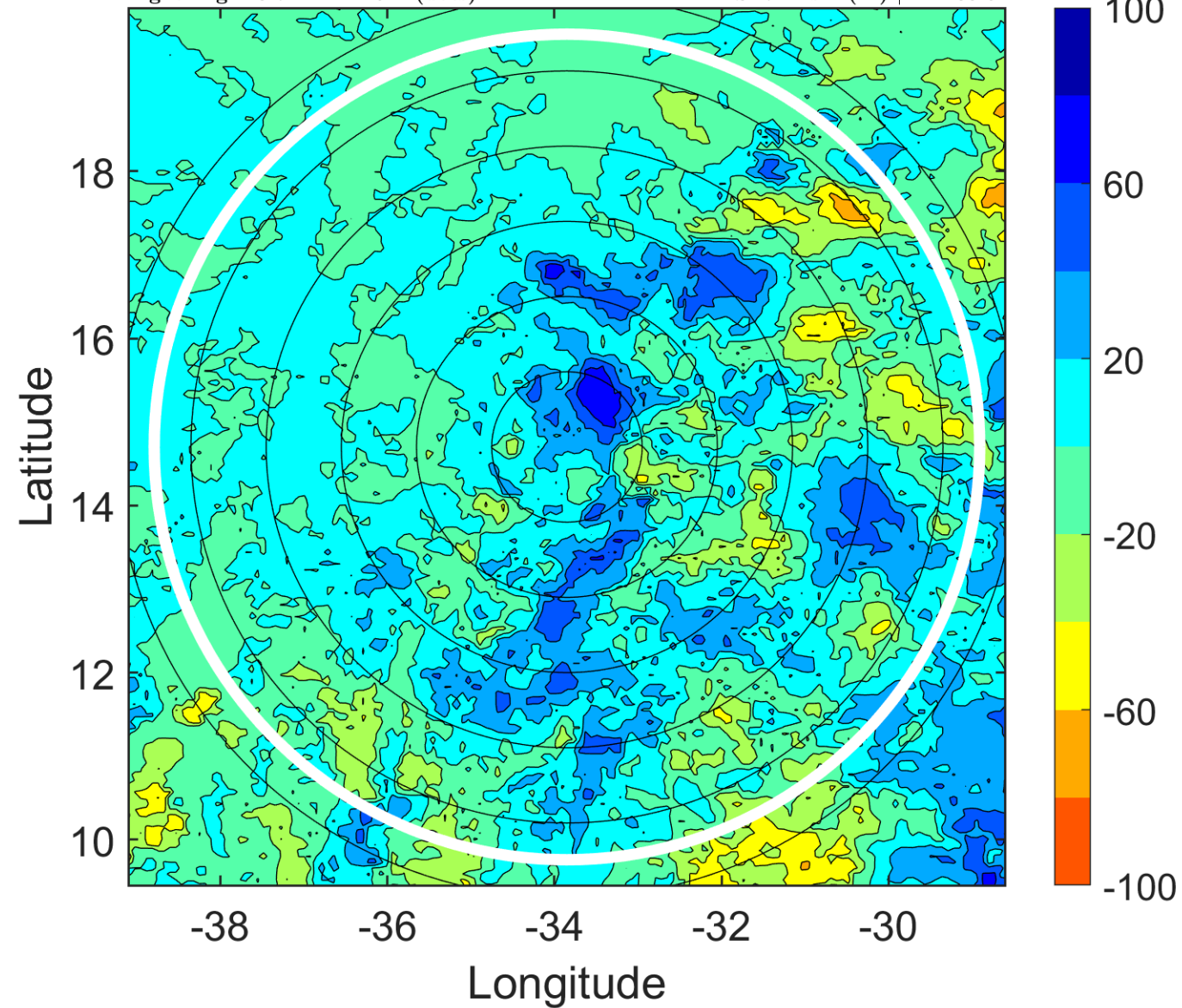
Δ t: 2005100121 (18.7 LT) - 2005100115 (12.7 LT)

Lightning: 18.7 LT \pm 1.5 h (dots)

PT: LLCP | EA: INACT

19L (NINETEEN) | 30 kt TD

S: 7 m s⁻¹ (M) | H: 103.5°



IR BT & Lightning

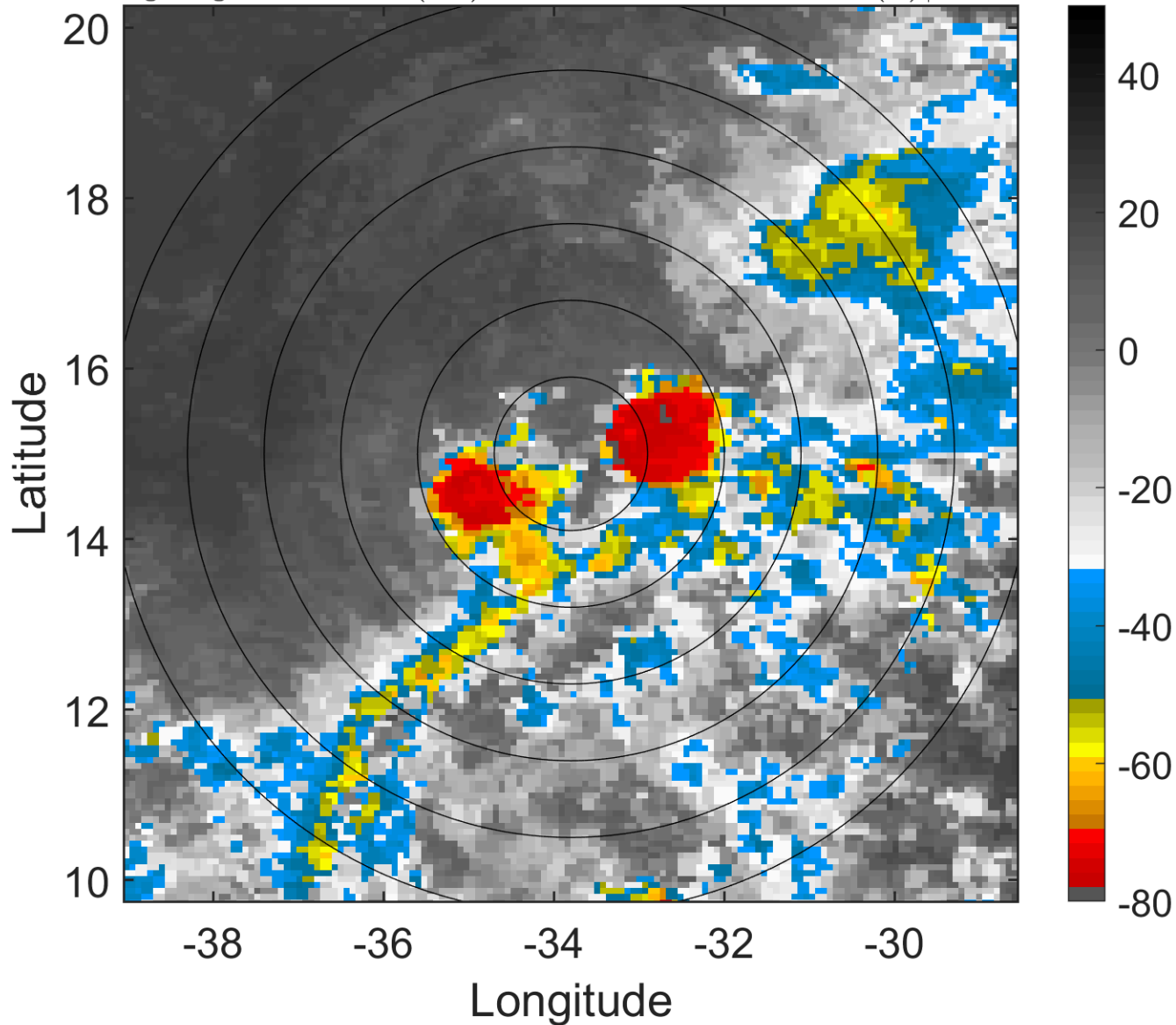
t: 2005100200 (21.7 LT)

Lightning: 21.7 LT \pm 1.5 h (dots)

PT: LLCP | EA: INACT

19L (NINETEEN) | 30 kt TD

S: 8.1 m s⁻¹ (M) | H: 109°



6-h IR BT Differences & Lightning

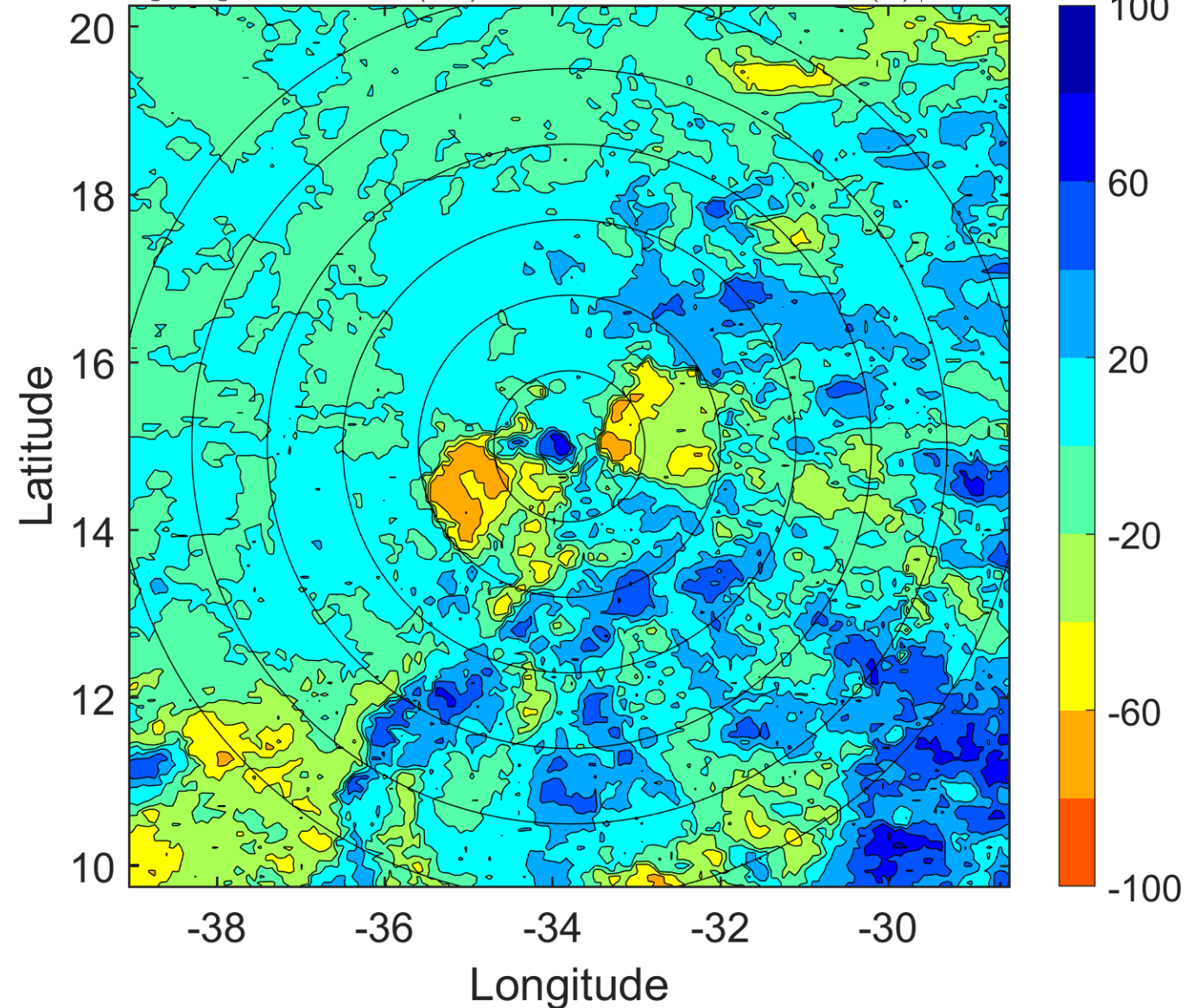
Δ t: 2005100200 (21.7 LT) - 2005100118 (15.7 LT)

Lightning: 21.7 LT \pm 1.5 h (dots)

PT: LLCP | EA: INACT

19L (NINETEEN) | 30 kt TD

S: 8.1 m s⁻¹ (M) | H: 109°



IR BT & Lightning

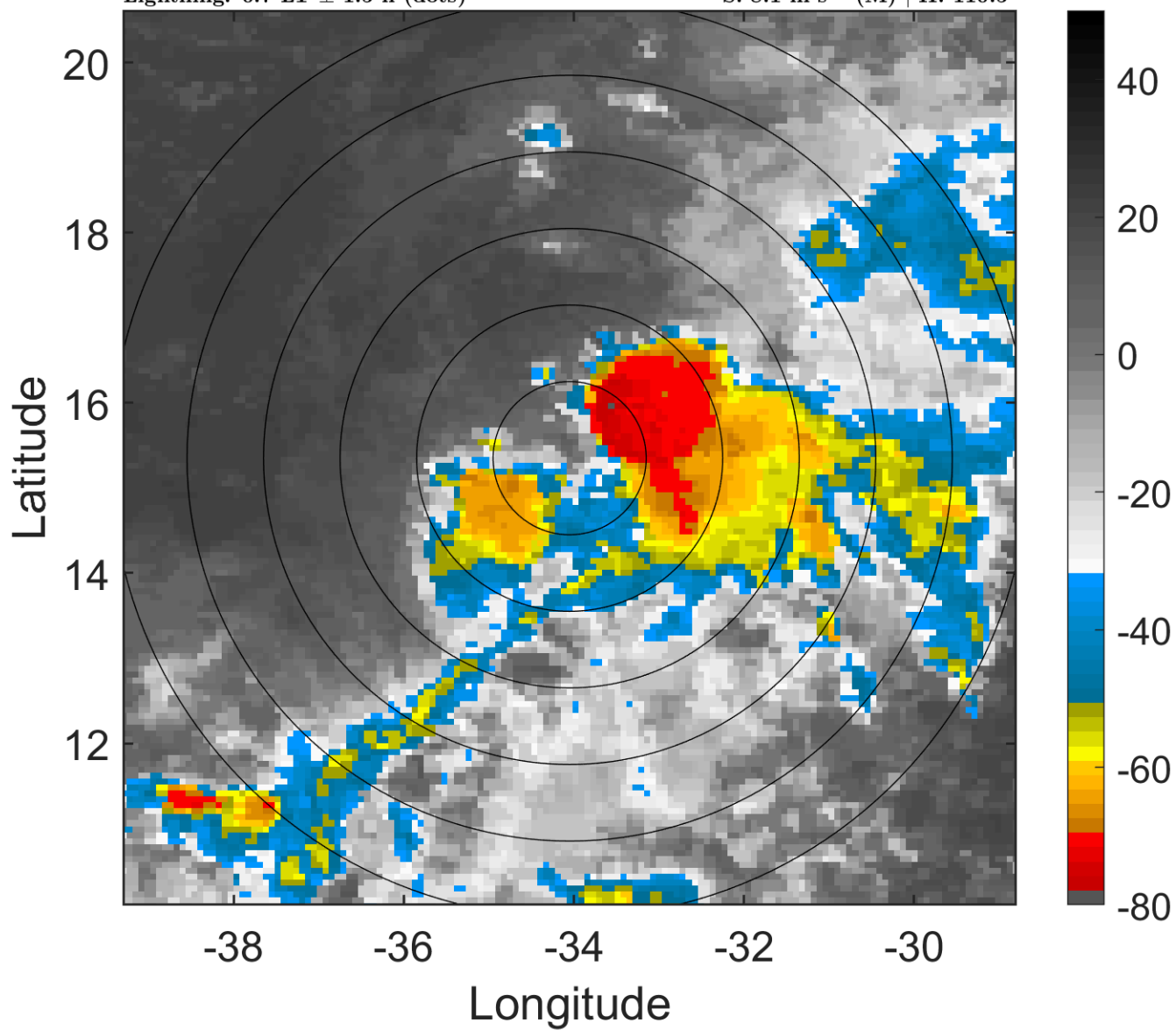
t: 2005100203 (0.7 LT)

Lightning: 0.7 LT \pm 1.5 h (dots)

PT: SLWP | EA: INACT

19L (NINETEEN) | 27.5 kt TD

S: 8.1 m s⁻¹ (M) | H: 110.5°



6-h IR BT Differences & Lightning

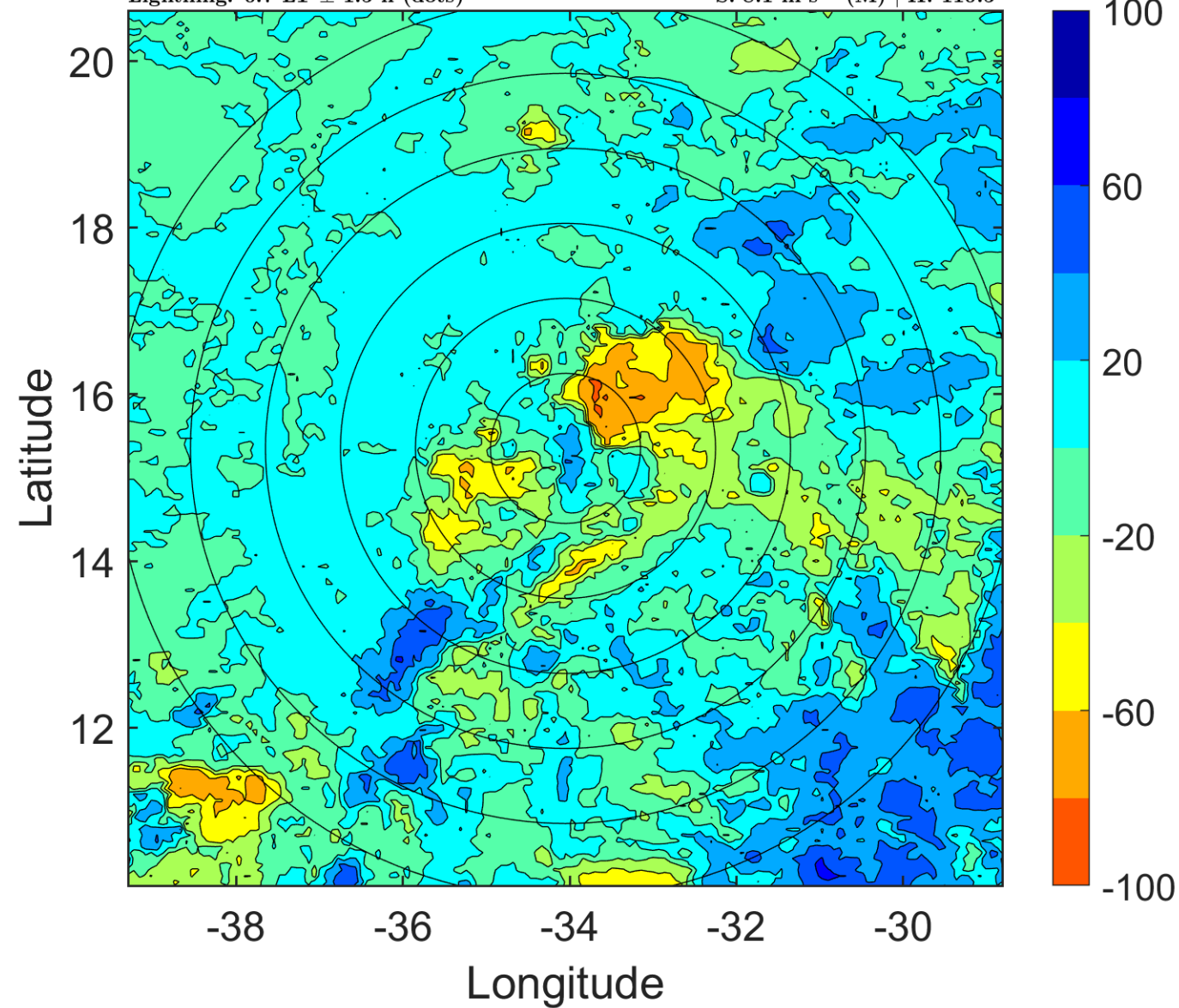
Δ t: 2005100203 (0.7 LT) - 2005100121 (18.7 LT)

Lightning: 0.7 LT \pm 1.5 h (dots)

PT: SLWP | EA: INACT

19L (NINETEEN) | 27.5 kt TD

S: 8.1 m s⁻¹ (M) | H: 110.5°



IR BT & Lightning

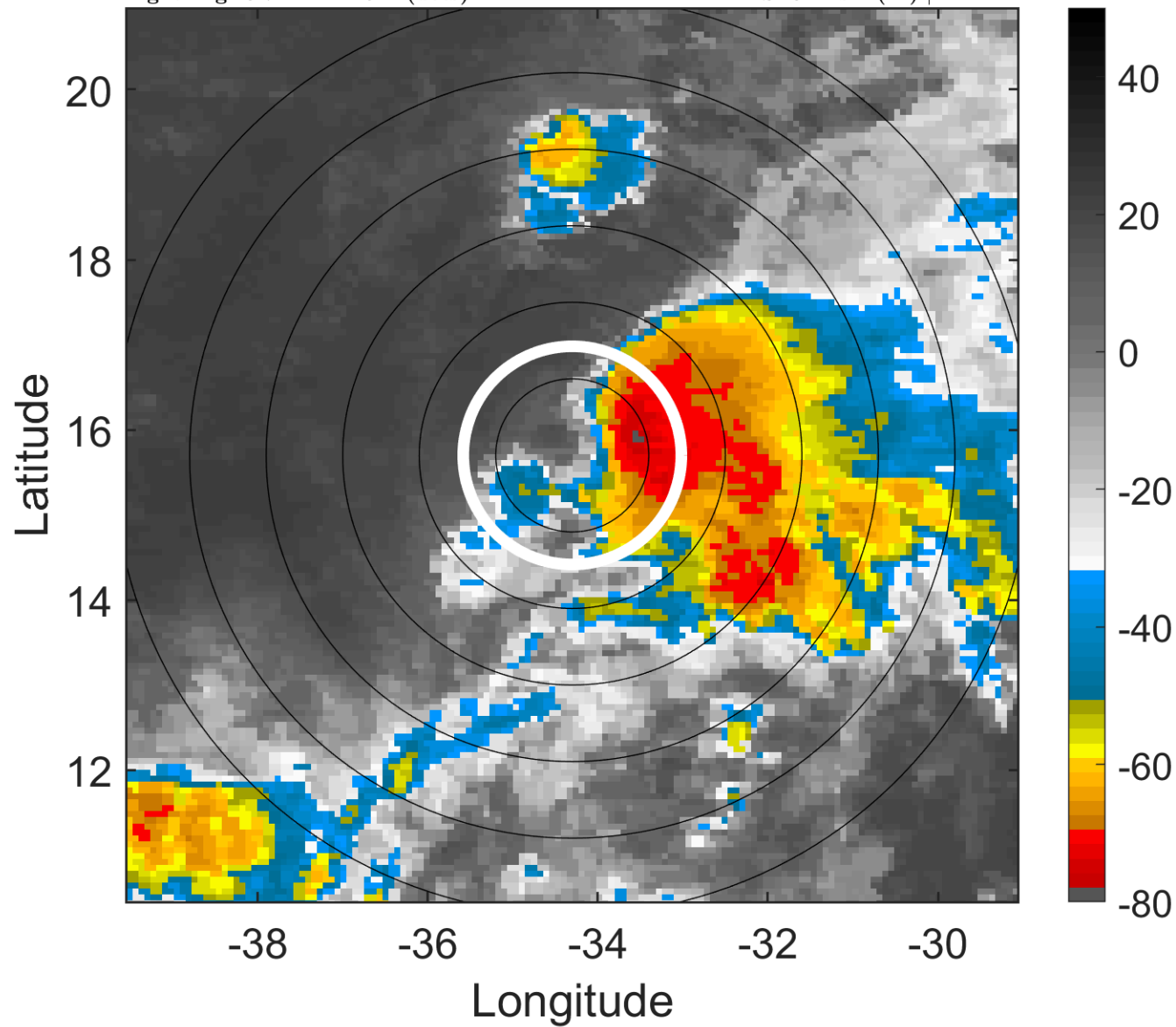
t: 2005100206 (3.7 LT)

Lightning: 3.7 LT \pm 1.5 h (dots)

PT: SLWP | EA: INACT

19L (NINETEEN) | 25 kt TD

S: 8 m s⁻¹ (M) | H: 112°



6-h IR BT Differences & Lightning

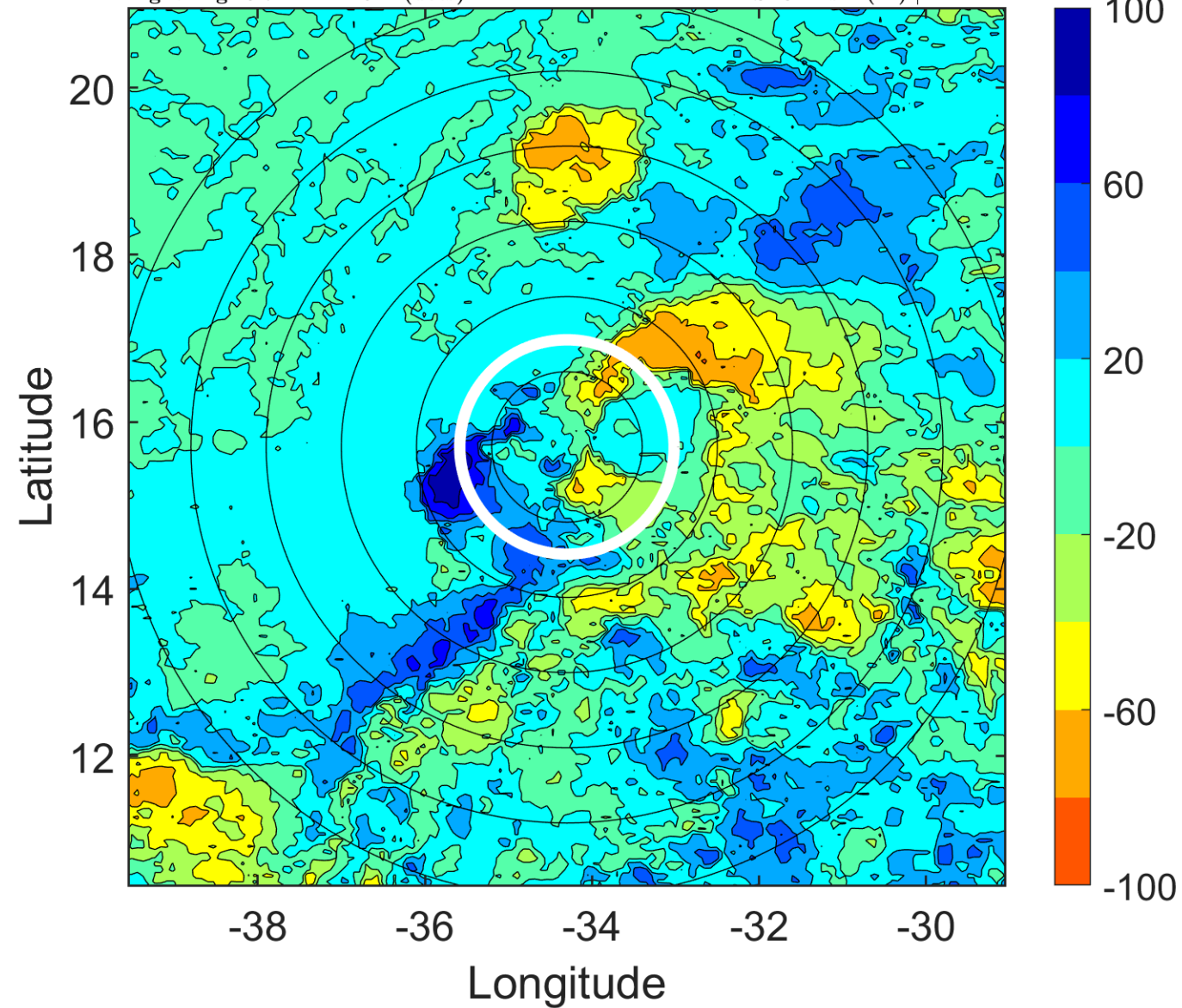
Δ t: 2005100206 (3.7 LT) - 2005100200 (21.7 LT)

Lightning: 3.7 LT \pm 1.5 h (dots)

PT: SLWP | EA: INACT

19L (NINETEEN) | 25 kt TD

S: 8 m s⁻¹ (M) | H: 112°



IR BT & Lightning

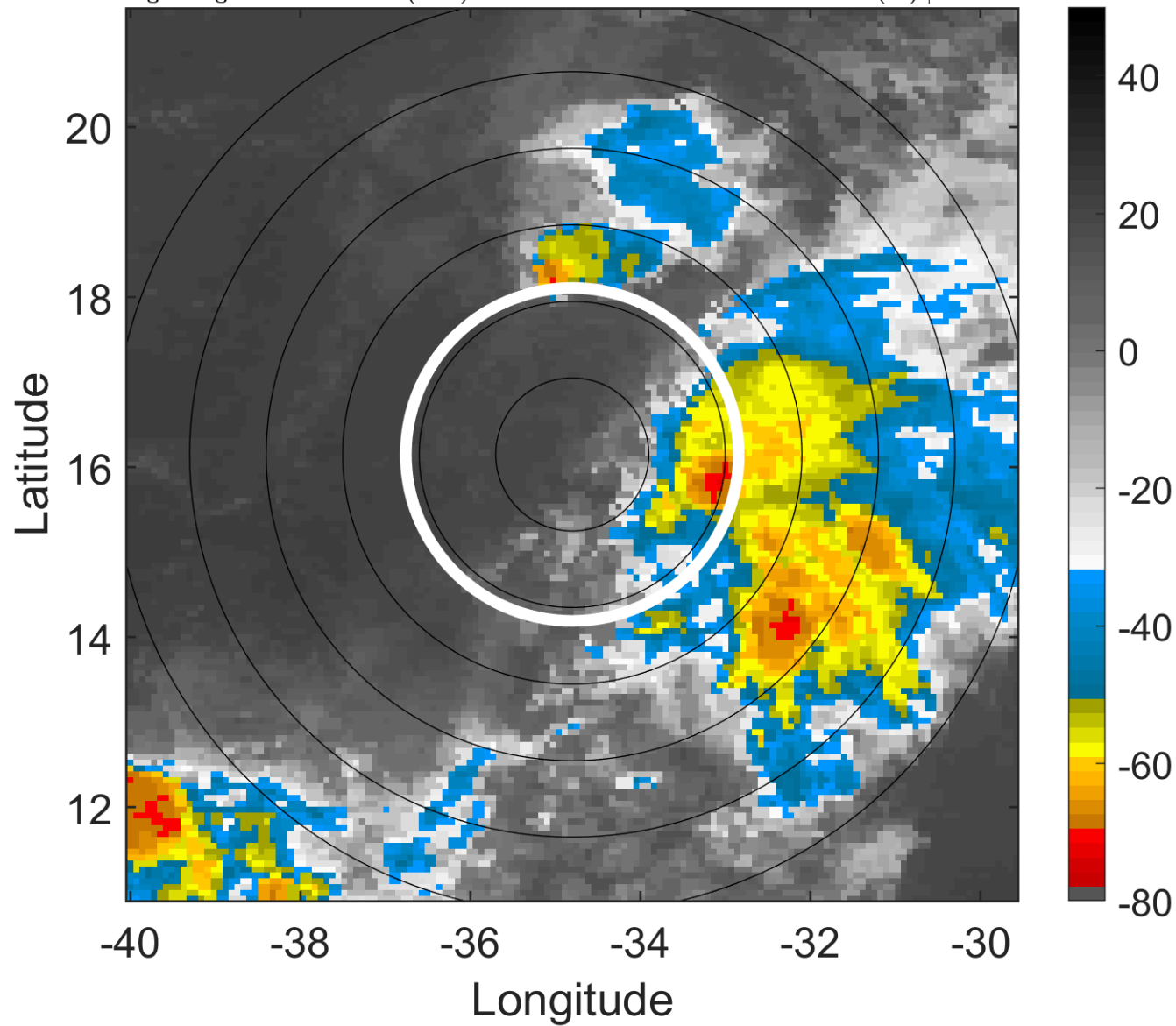
t: 2005100209 (6.7 LT)

Lightning: 6.7 LT \pm 1.5 h (dots)

PT: SLWP | EA: INACT

19L (NINETEEN) | 25 kt TD

S: 9 m s⁻¹ (M) | H: 105°



6-h IR BT Differences & Lightning

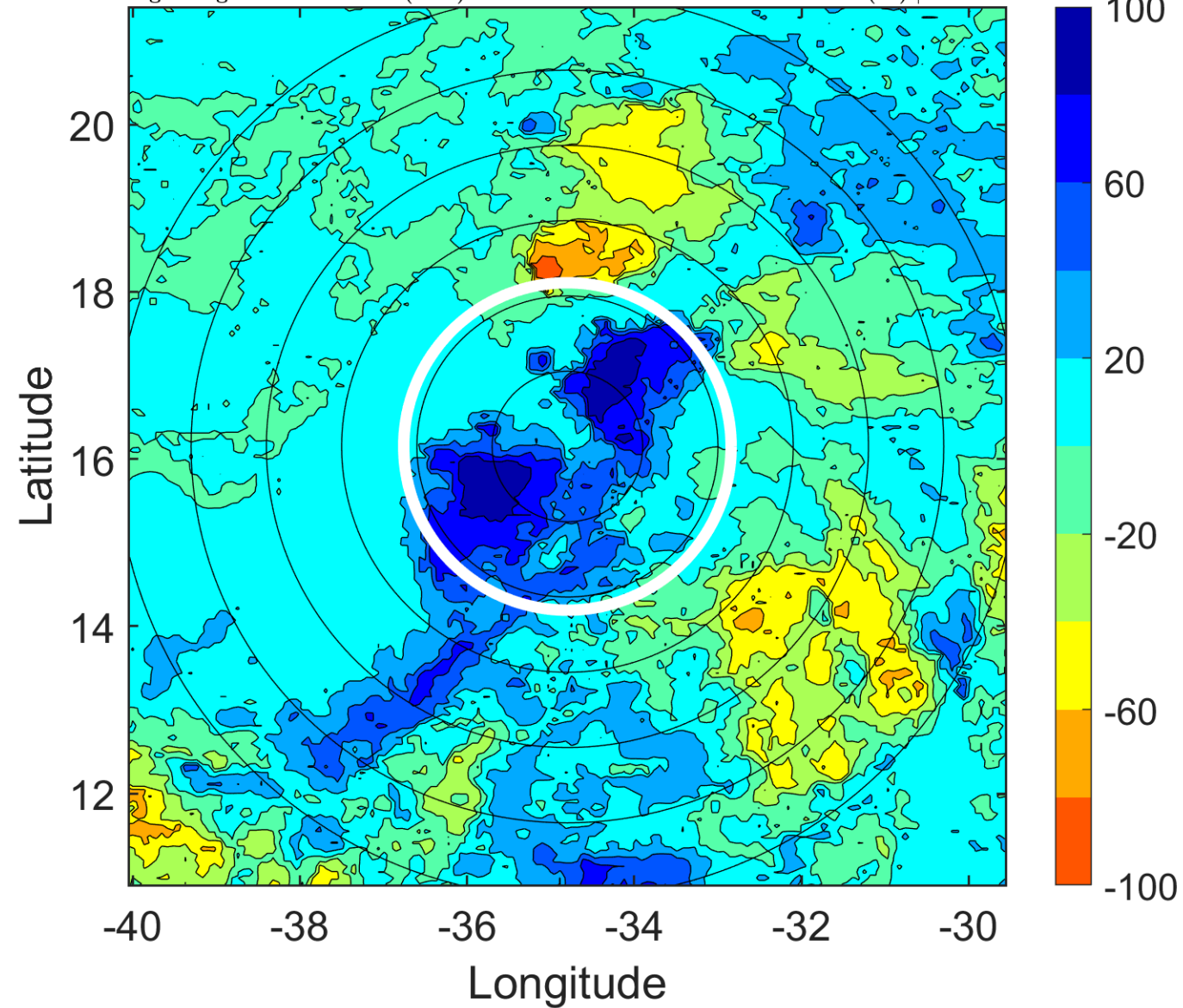
Δ t: 2005100209 (6.7 LT) - 2005100203 (0.7 LT)

Lightning: 6.7 LT \pm 1.5 h (dots)

PT: SLWP | EA: INACT

19L (NINETEEN) | 25 kt TD

S: 9 m s⁻¹ (M) | H: 105°



IR BT & Lightning

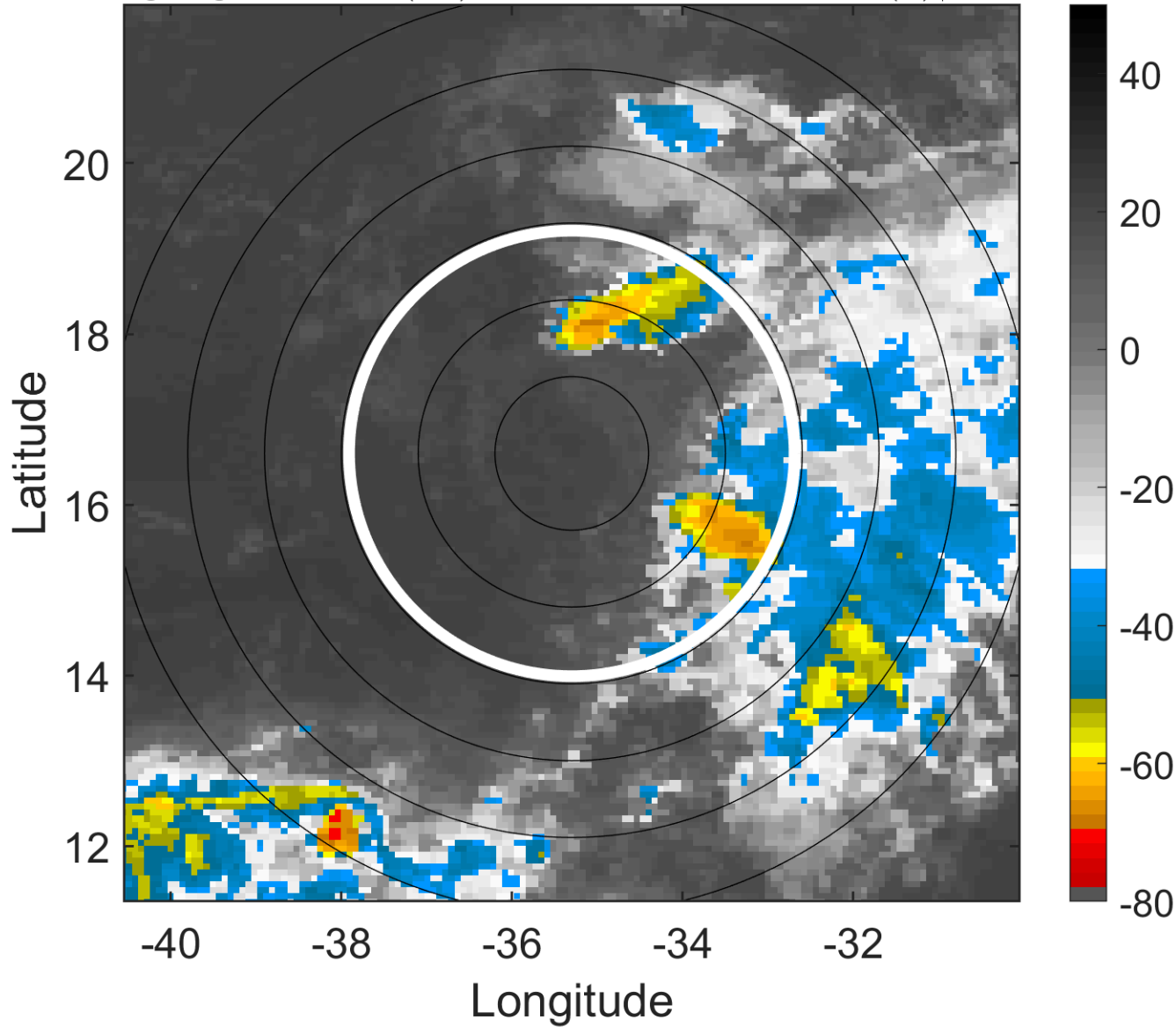
t: 2005100212 (9.6 LT)

Lightning: 9.6 LT \pm 1.5 h (dots)

PT: SLWP | EA: INACT

19L (NINETEEN) | 25 kt TD

S: 9.9 m s⁻¹ (M) | H: 98°



6-h IR BT Differences & Lightning

Δ t: 2005100212 (9.6 LT) - 2005100206 (3.7 LT)

Lightning: 9.6 LT \pm 1.5 h (dots)

PT: SLWP | EA: INACT

19L (NINETEEN) | 25 kt TD

S: 9.9 m s⁻¹ (M) | H: 98°

