

IR BT & Lightning

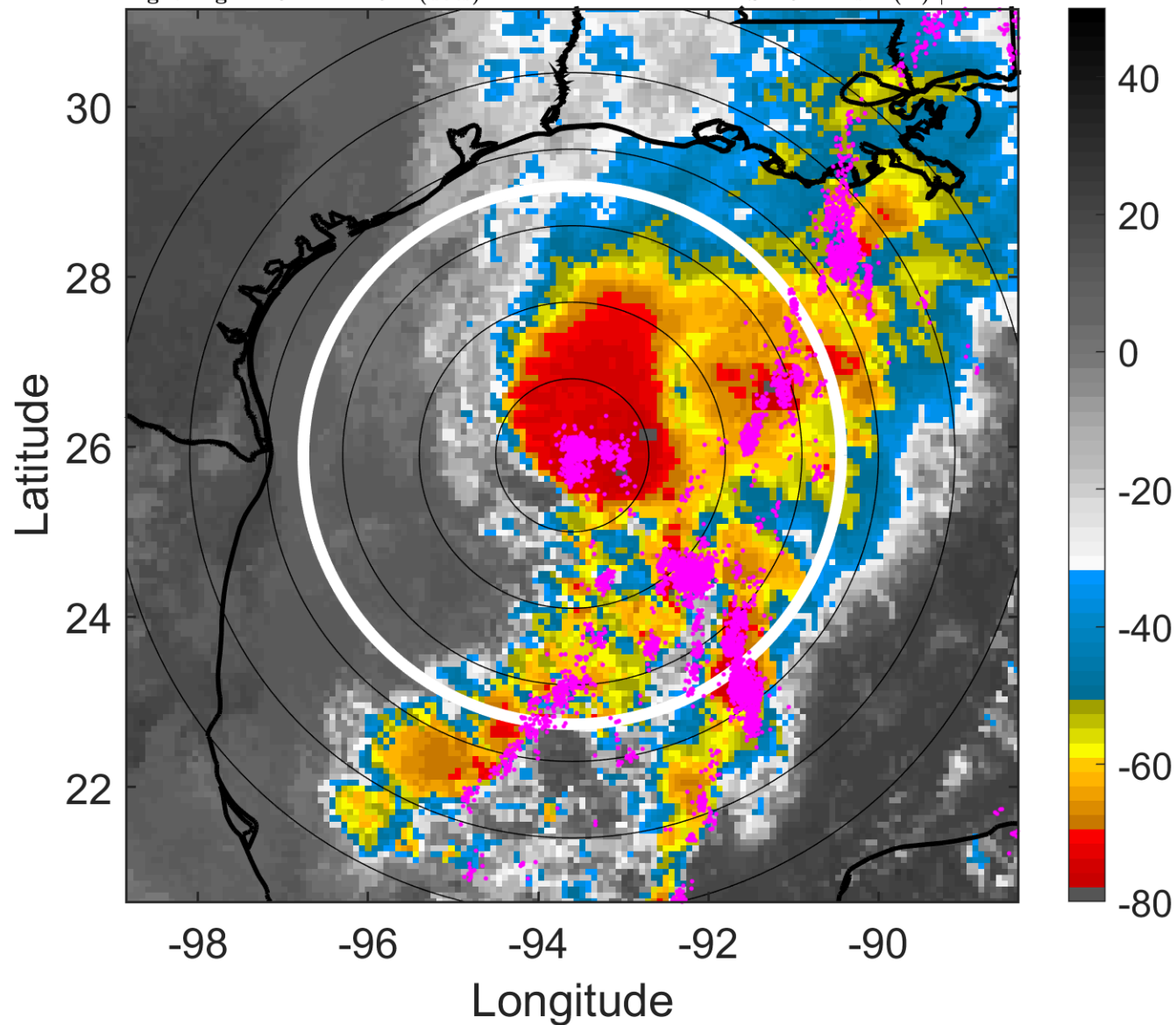
t: 2019102518 (11.8 LT)

Lightning: 11.8 LT \pm 1.5 h (dots)

PT: SLCP | EA: QUASI

17L (OLGA) | 40 kt TS

S: 15.4 m s⁻¹ (H) | H: 24°



6-h IR BT Differences & Lightning

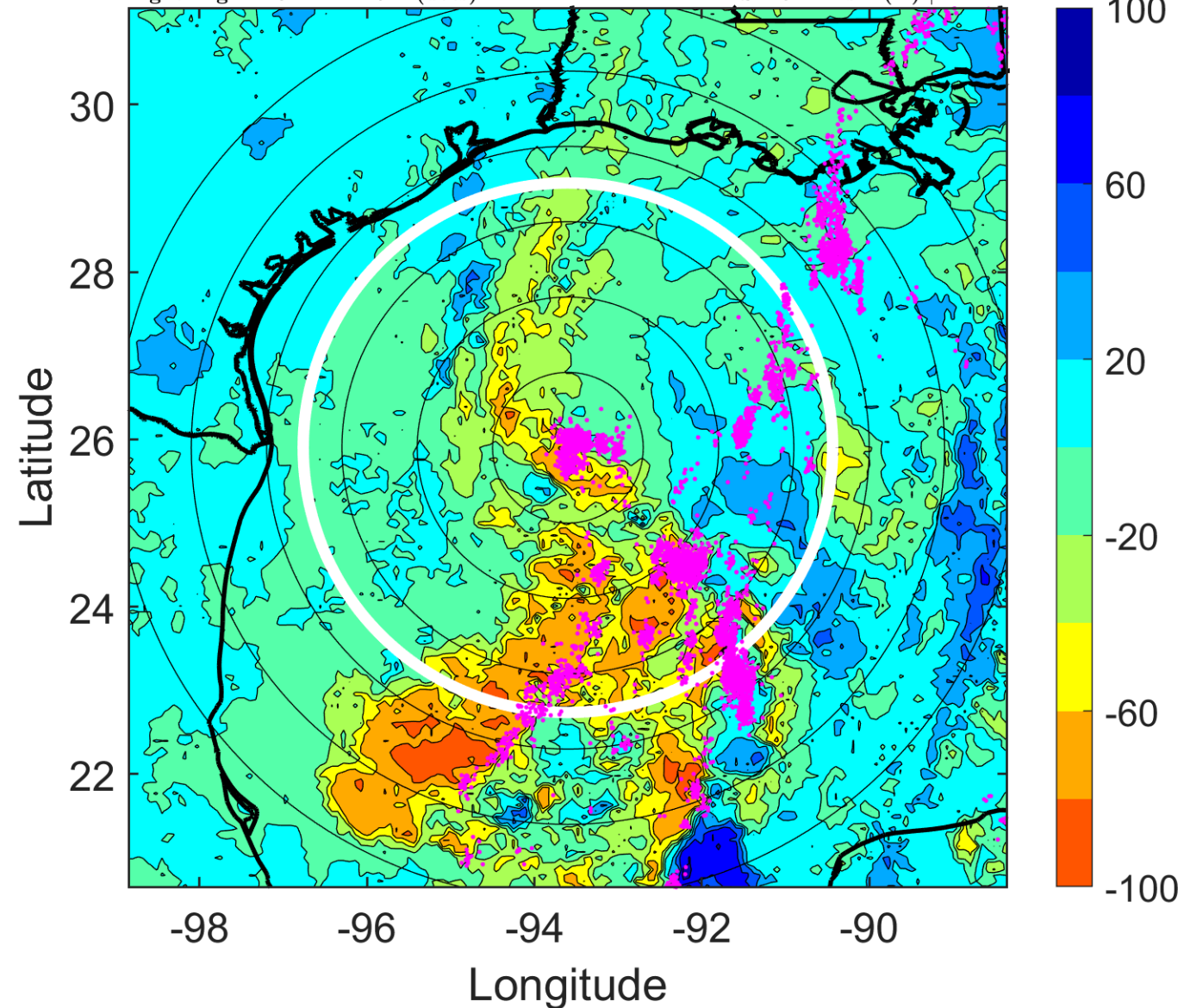
Δ t: 2019102518 (11.8 LT) - 2019102512 (5.7 LT)

Lightning: 11.8 LT \pm 1.5 h (dots)

PT: SLCP | EA: QUASI

17L (OLGA) | 40 kt TS

S: 15.4 m s⁻¹ (H) | H: 24°



IR BT & Lightning

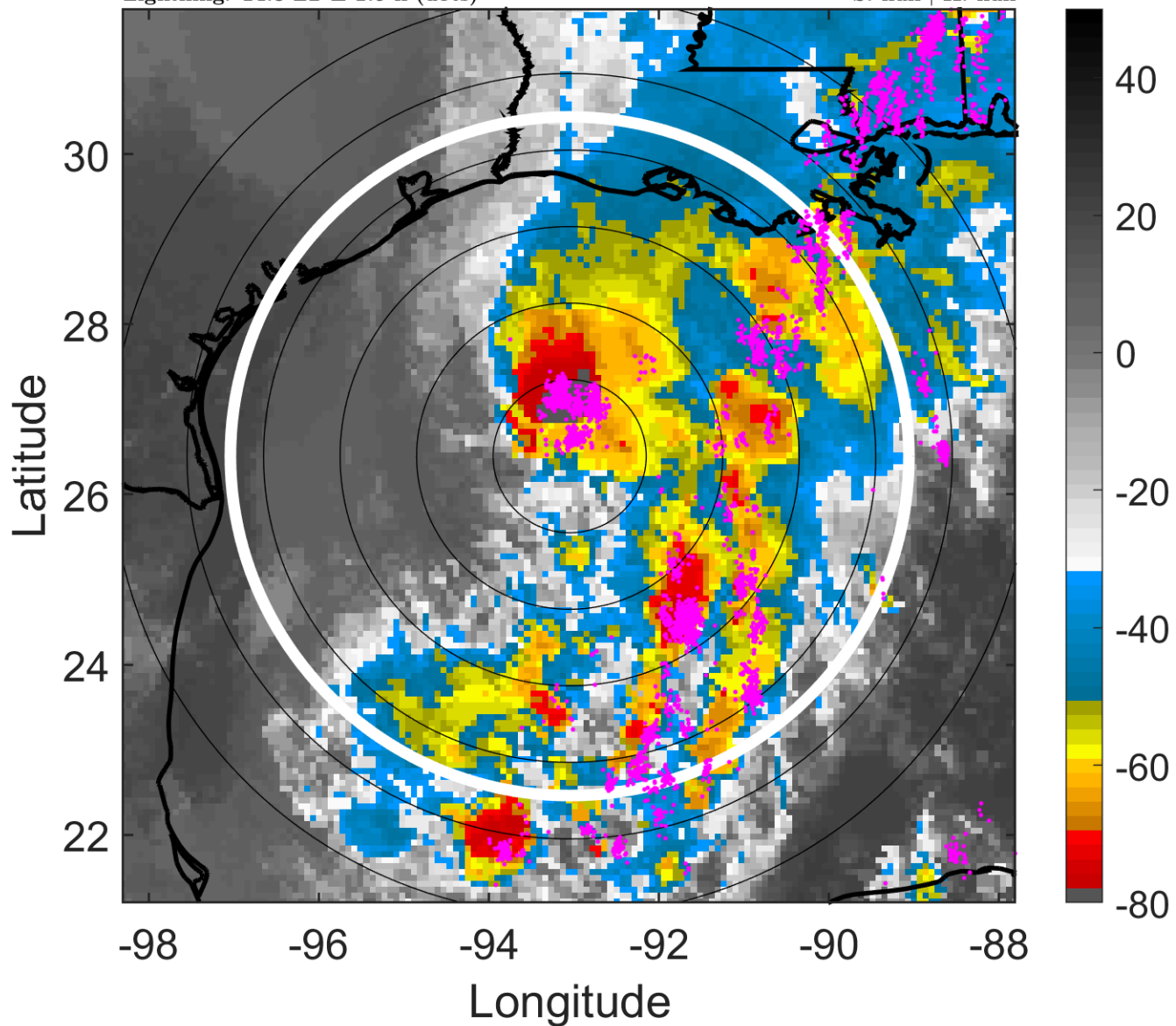
t: 2019102521 (14.8 LT)

Lightning: 14.8 LT \pm 1.5 h (dots)

PT: SLCP | EA: QUASI

17L (OLGA) | 42.5 kt TS

S: null | H: null



6-h IR BT Differences & Lightning

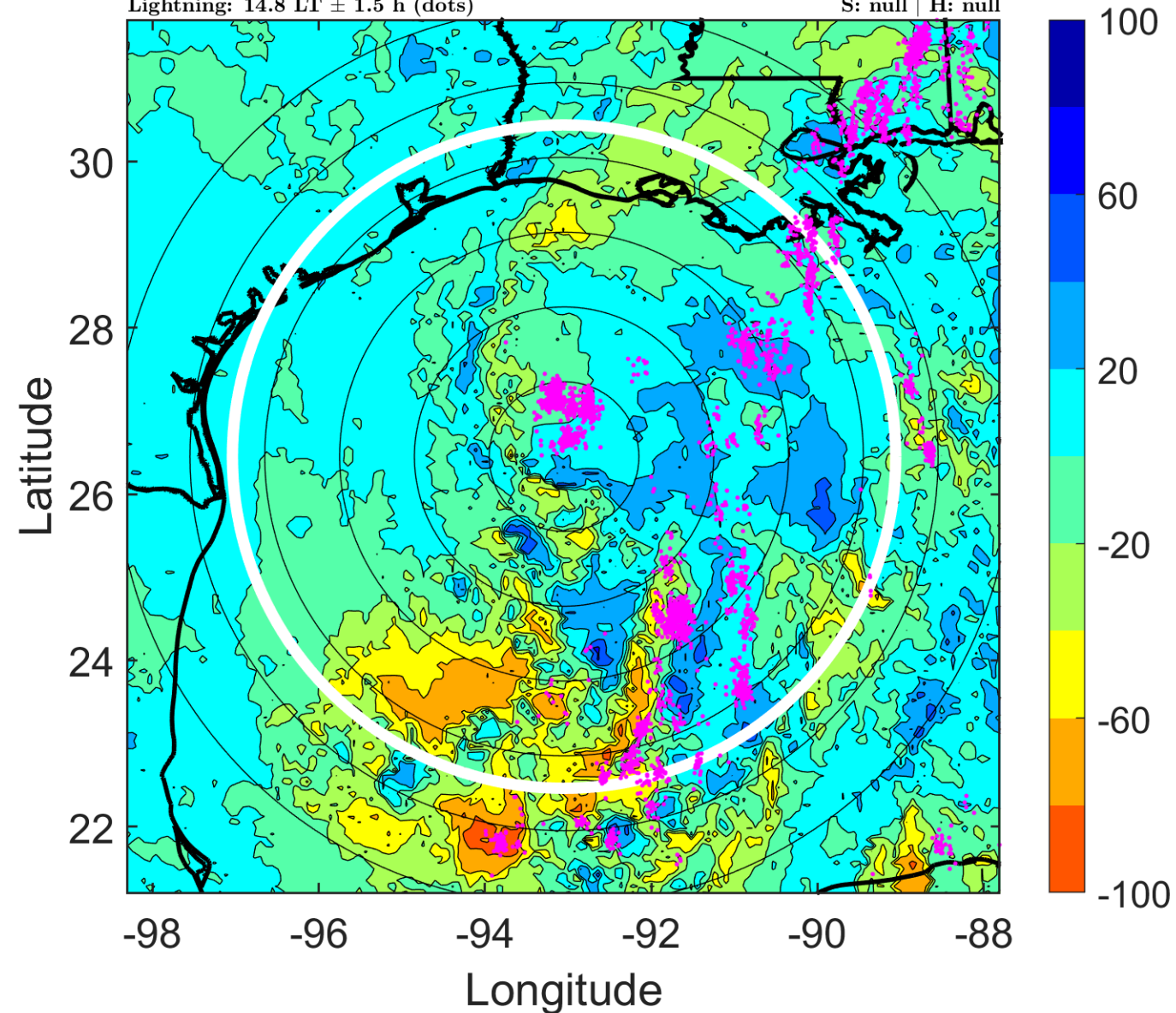
Δ t: 2019102521 (14.8 LT) - 2019102515 (8.7 LT)

Lightning: 14.8 LT \pm 1.5 h (dots)

PT: SLCP | EA: QUASI

17L (OLGA) | 42.5 kt TS

S: null | H: null



IR BT & Lightning

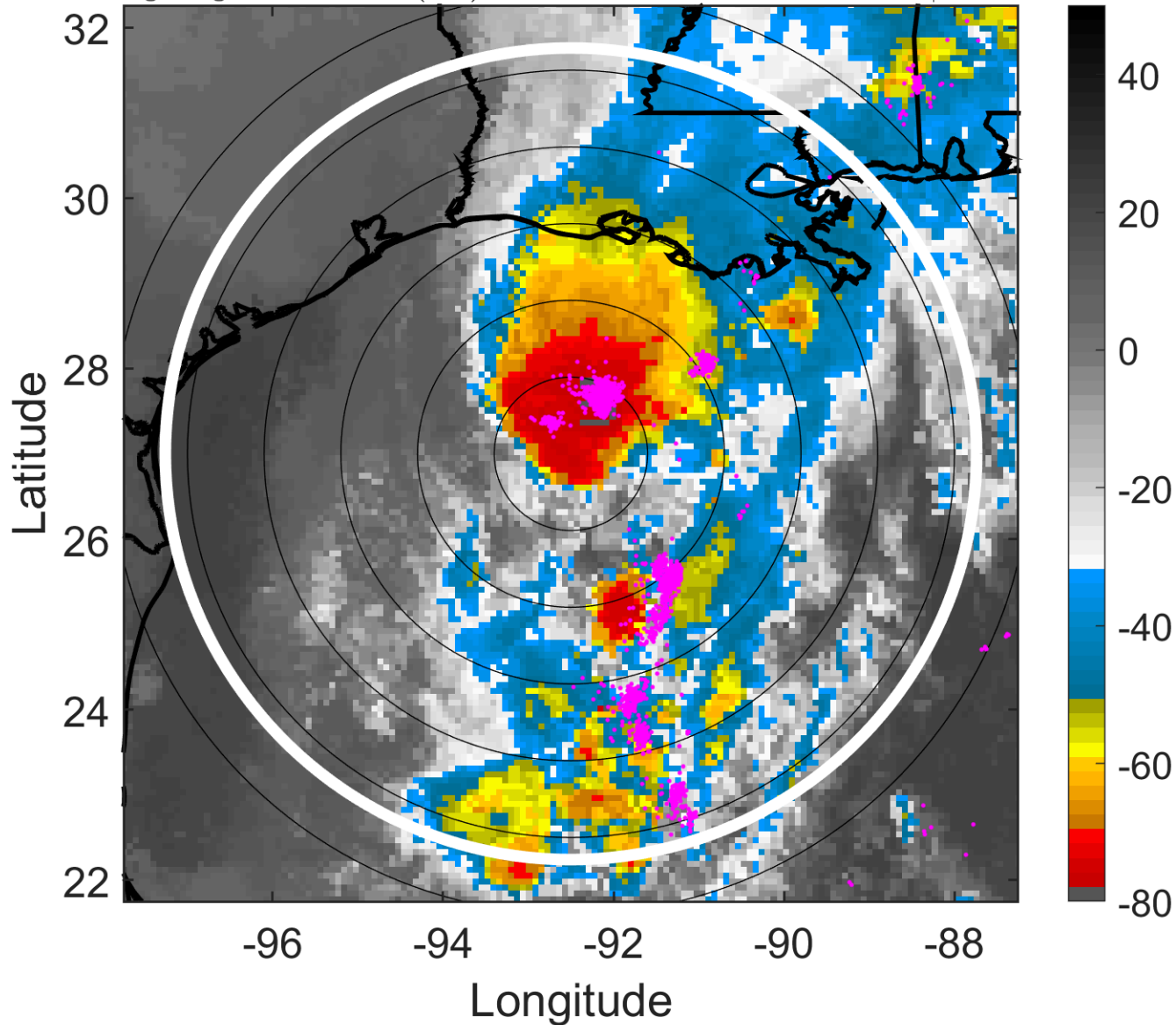
t: 2019102600 (17.8 LT)

Lightning: 17.8 LT \pm 1.5 h (dots)

PT: SLCP | EA: QUASI

17L (OLGA) | 45 kt EX

S: null | H: null



6-h IR BT Differences & Lightning

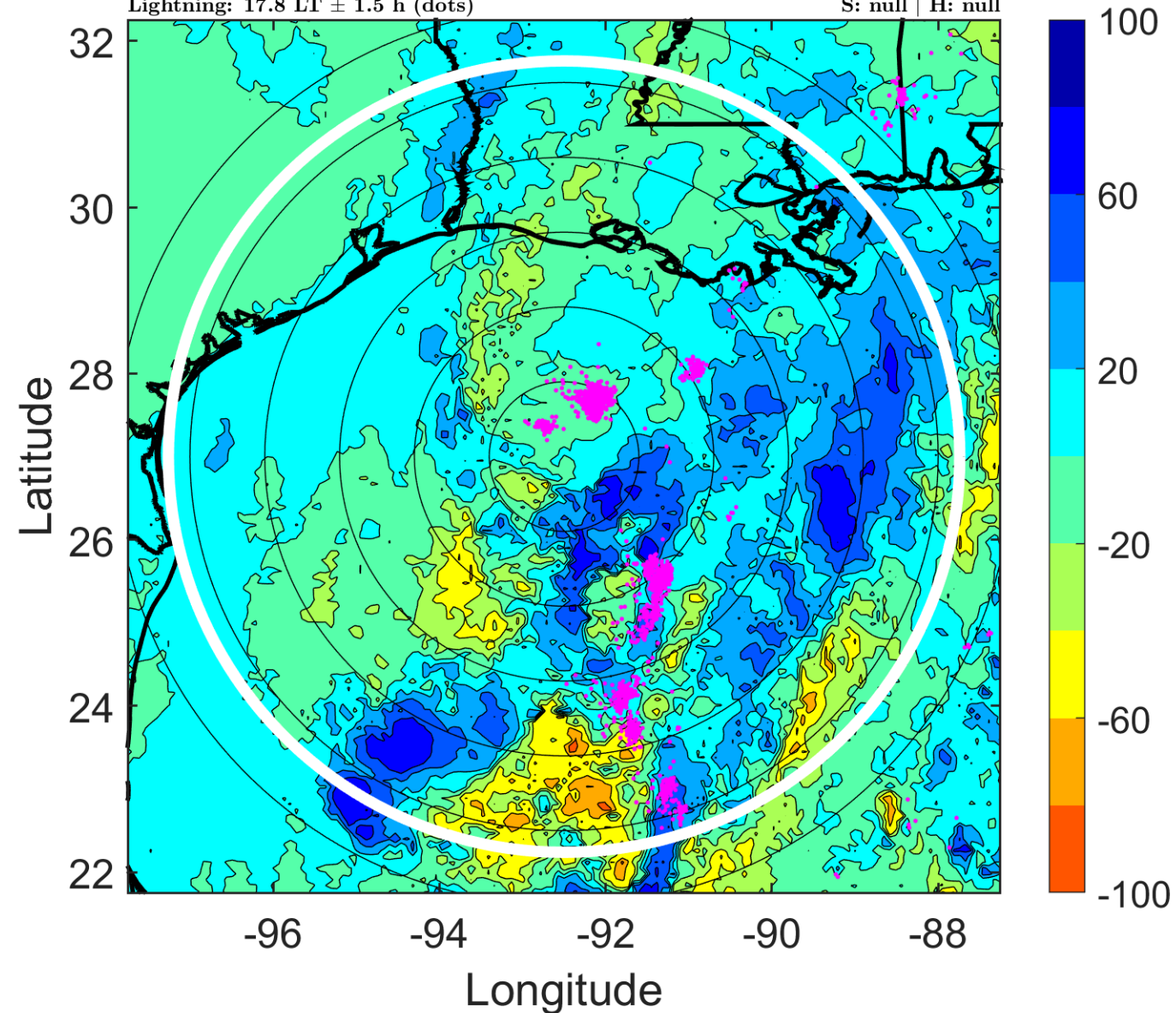
Δ t: 2019102600 (17.8 LT) - 2019102518 (11.8 LT)

Lightning: 17.8 LT \pm 1.5 h (dots)

PT: SLCP | EA: QUASI

17L (OLGA) | 45 kt EX

S: null | H: null



IR BT & Lightning

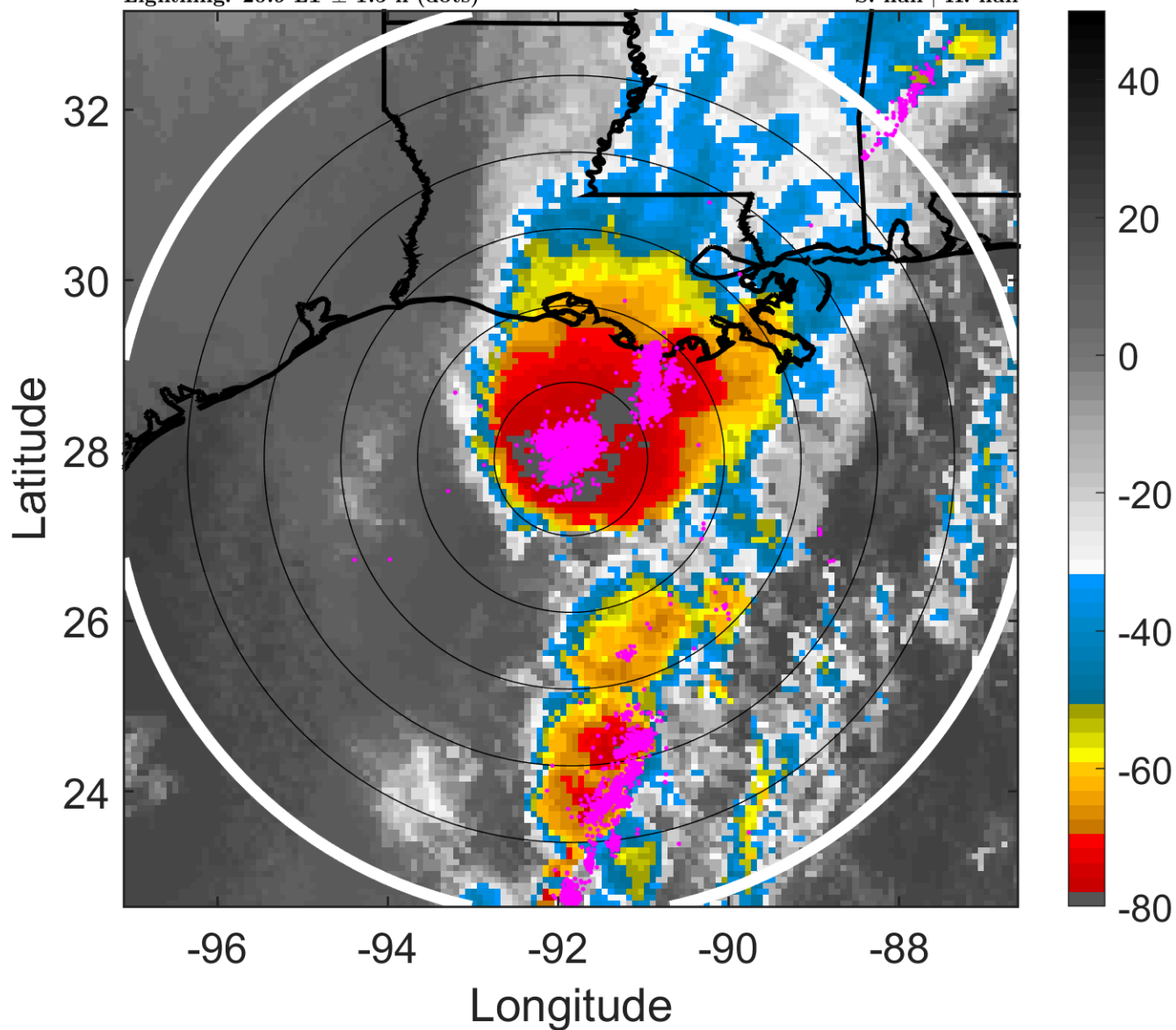
t: 2019102603 (20.9 LT)

Lightning: 20.9 LT \pm 1.5 h (dots)

PT: SLCP | EA: QUASI

17L (OLGA) | 45 kt EX

S: null | H: null



6-h IR BT Differences & Lightning

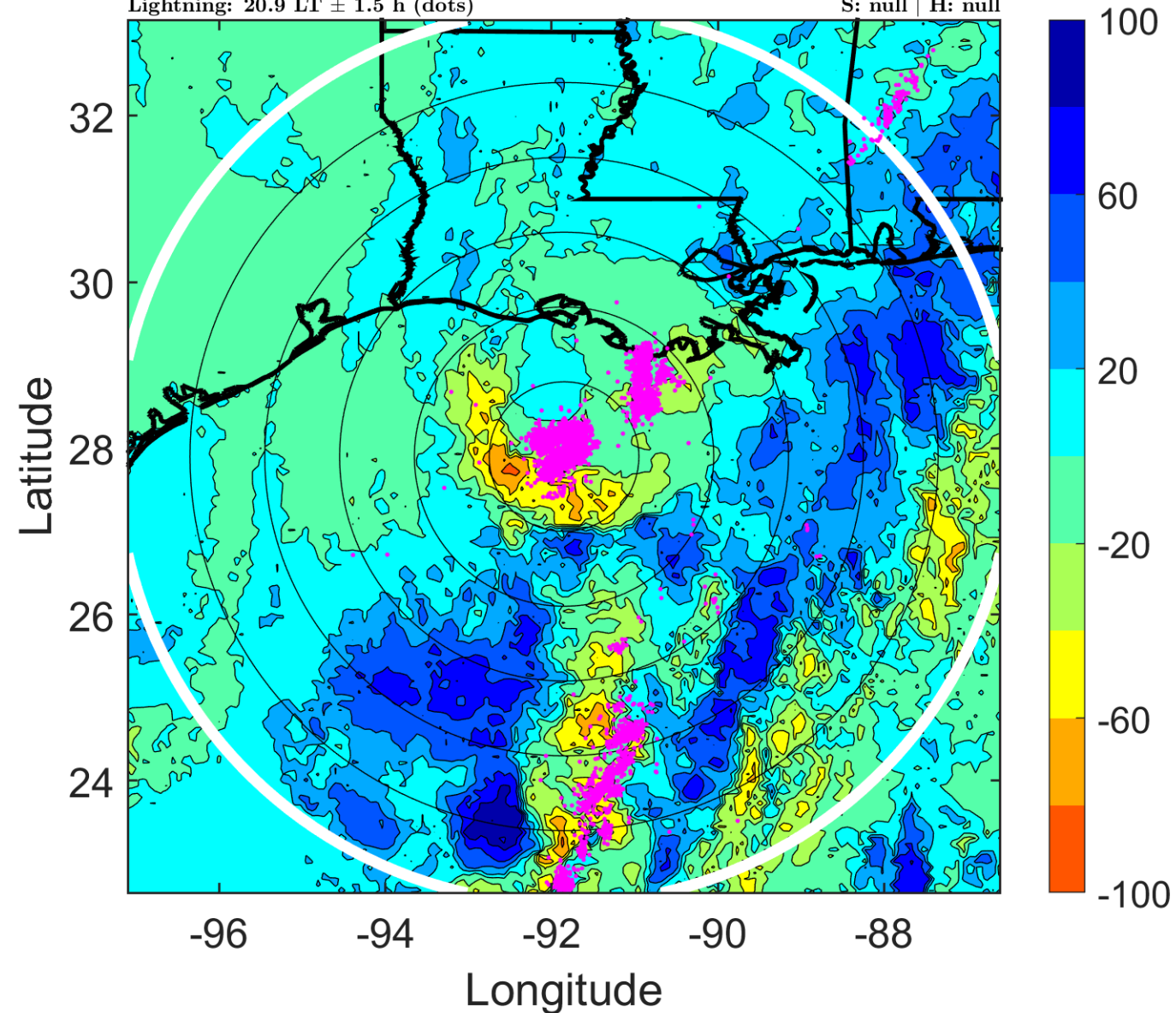
Δ t: 2019102603 (20.9 LT) - 2019102521 (14.8 LT)

Lightning: 20.9 LT \pm 1.5 h (dots)

PT: SLCP | EA: QUASI

17L (OLGA) | 45 kt EX

S: null | H: null



IR BT & Lightning

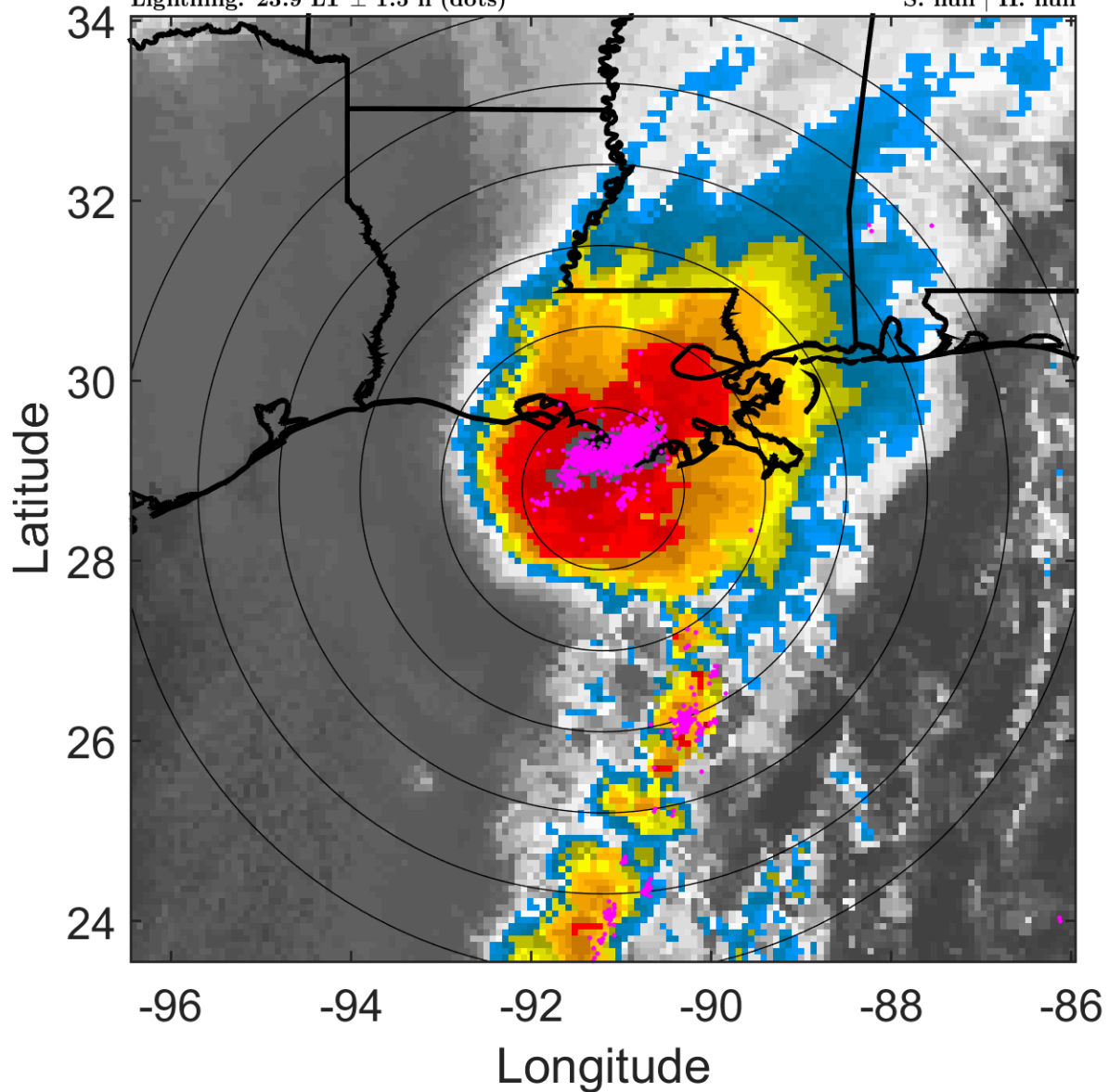
t: 2019102606 (23.9 LT)

Lightning: 23.9 LT \pm 1.5 h (dots)

PT: SLCP | EA: QUASI

17L (OLGA) | 45 kt EX

S: null | H: null



6-h IR BT Differences & Lightning

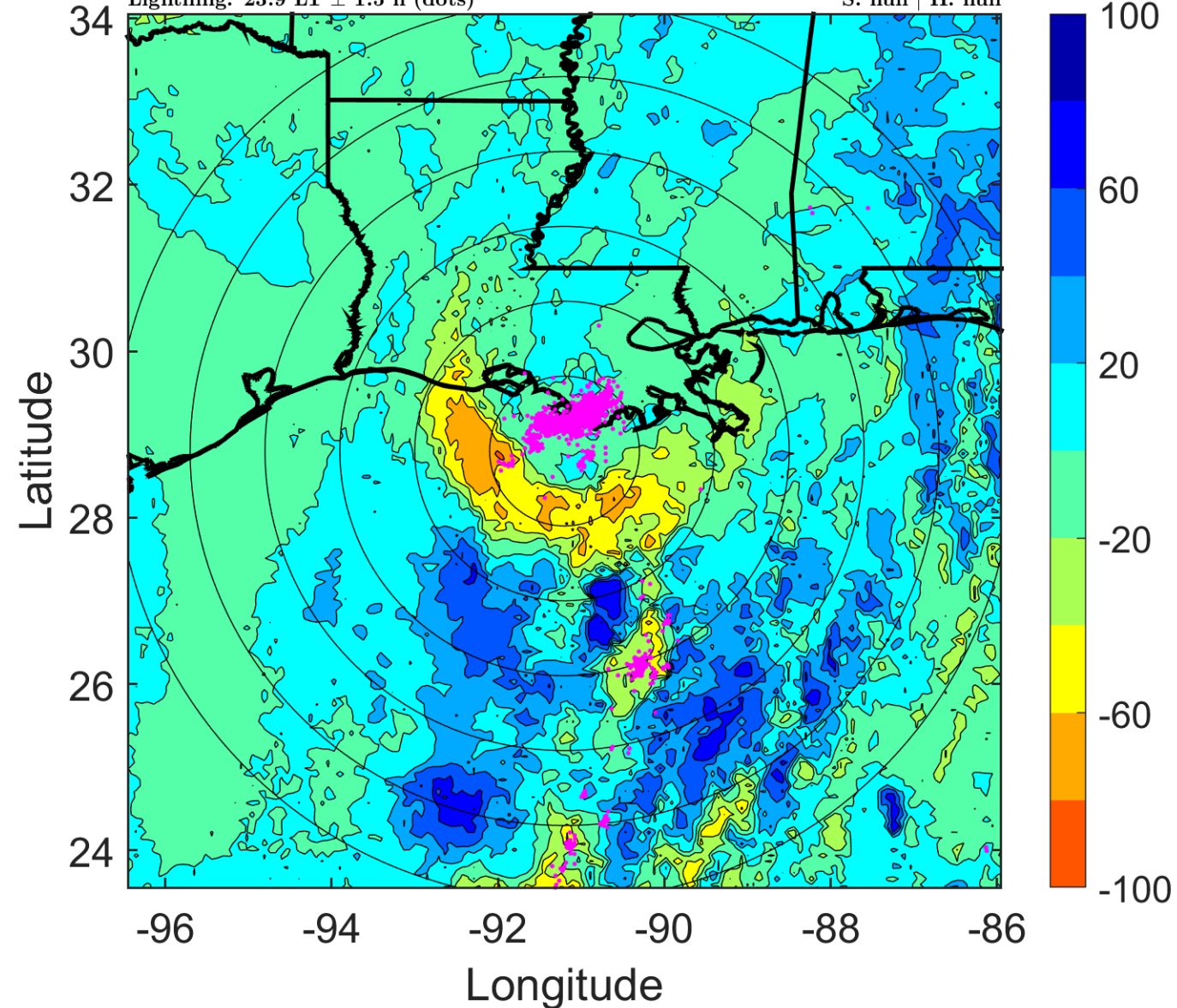
Δ t: 2019102606 (23.9 LT) - 2019102600 (17.8 LT)

Lightning: 23.9 LT \pm 1.5 h (dots)

PT: SLCP | EA: QUASI

17L (OLGA) | 45 kt EX

S: null | H: null



IR BT & Lightning

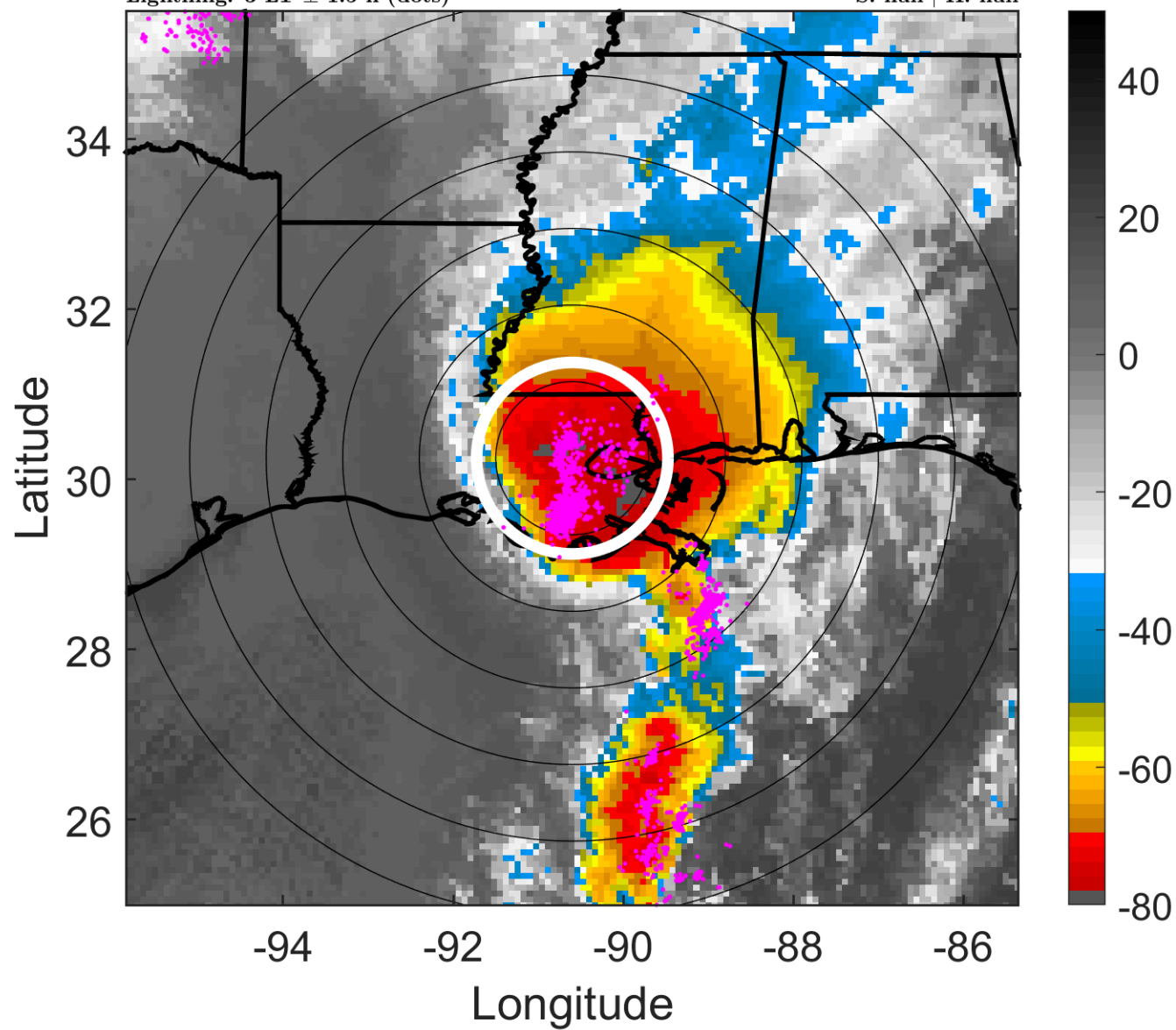
t: 2019102609 (3 LT)

Lightning: 3 LT \pm 1.5 h (dots)

PT: LLCP | EA: INACT

17L (OLGA) | 45 kt EX

S: null | H: null



6-h IR BT Differences & Lightning

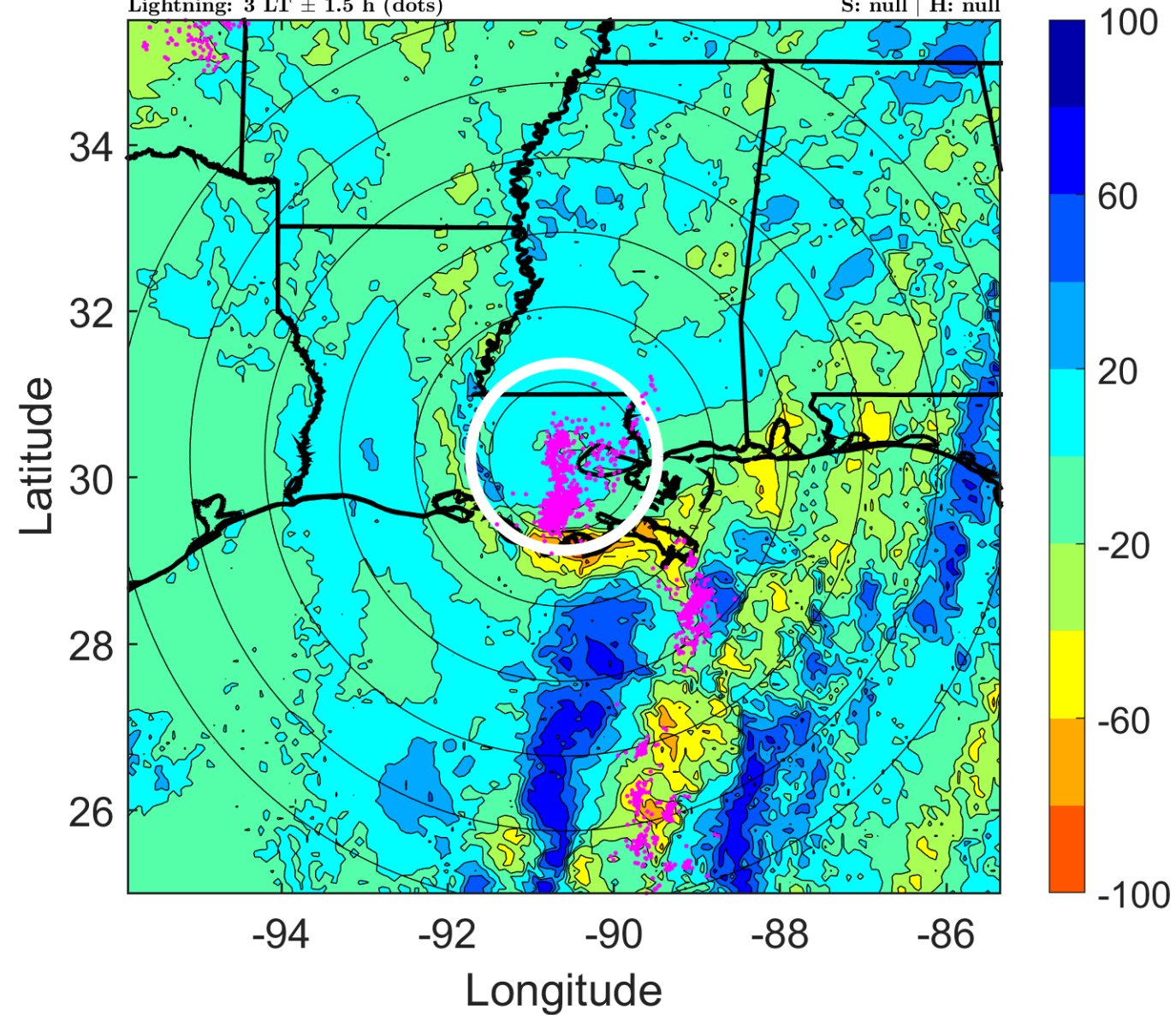
Δ t: 2019102609 (3 LT) - 2019102603 (20.9 LT)

Lightning: 3 LT \pm 1.5 h (dots)

PT: LLCP | EA: INACT

17L (OLGA) | 45 kt EX

S: null | H: null



IR BT & Lightning

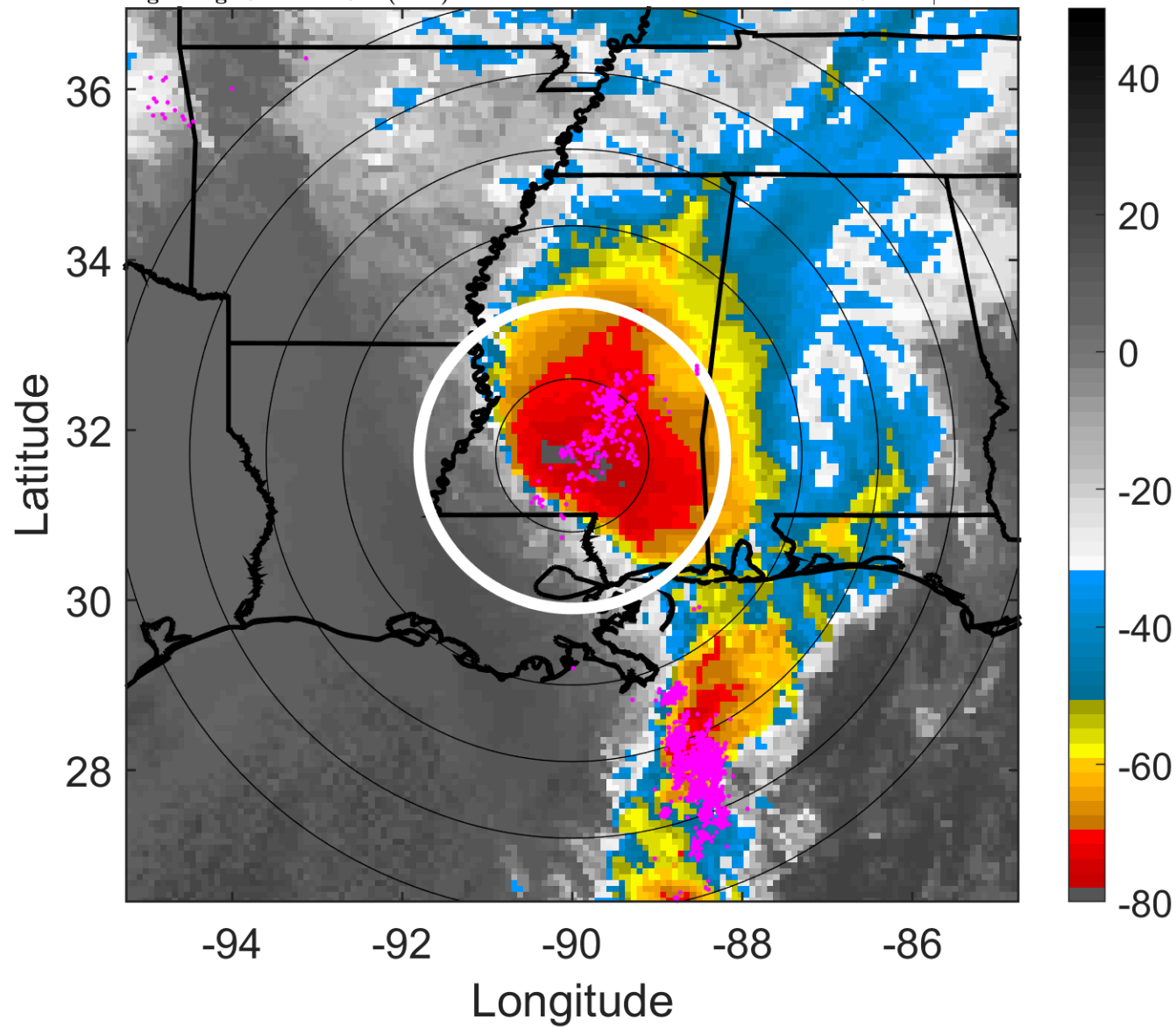
t: 2019102612 (6 LT)

Lightning: 6 LT \pm 1.5 h (dots)

PT: LLCP | EA: INACT

17L (OLGA) | 45 kt EX

S: null | H: null



6-h IR BT Differences & Lightning

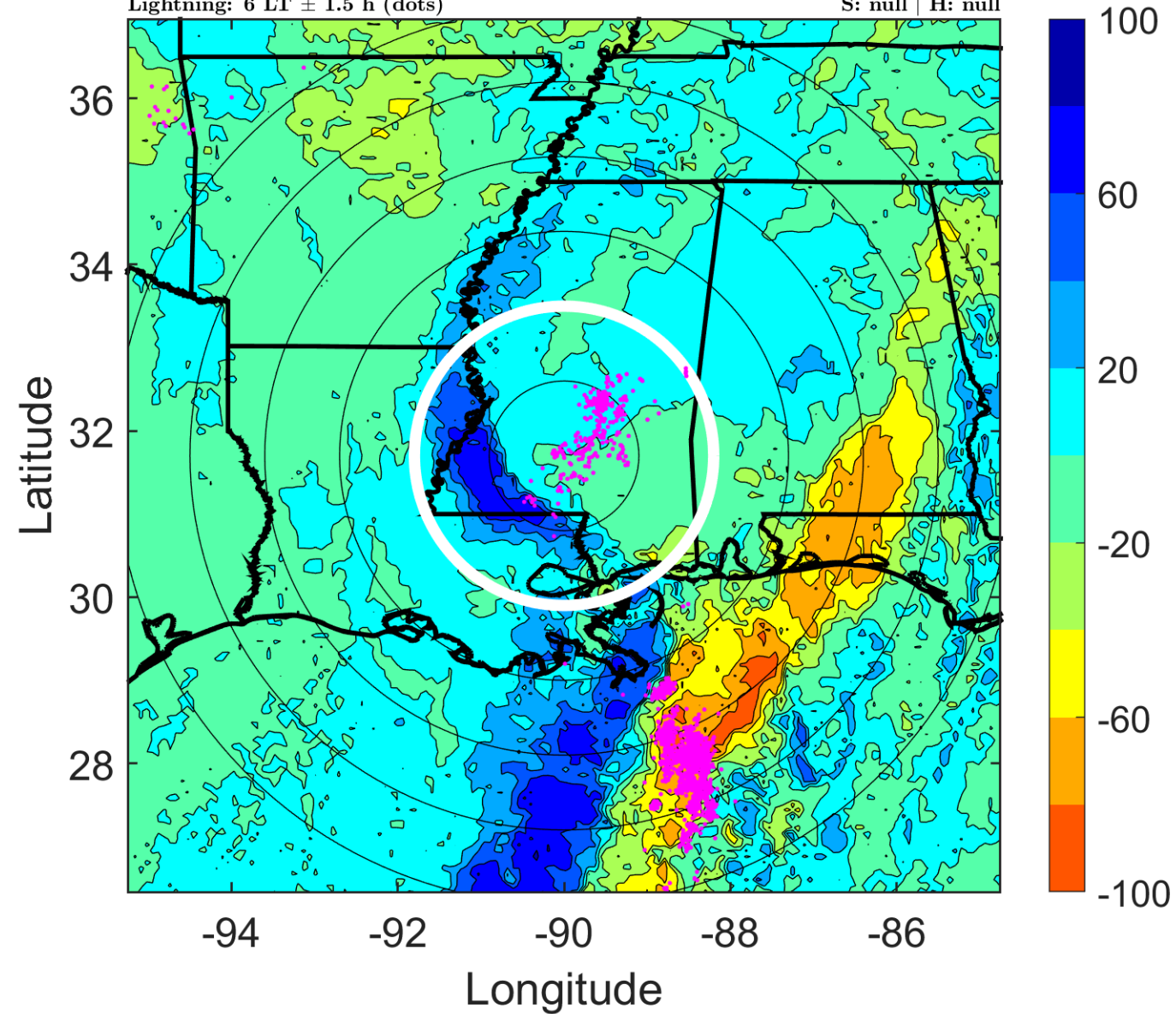
Δ t: 2019102612 (6 LT) - 2019102606 (23.9 LT)

Lightning: 6 LT \pm 1.5 h (dots)

PT: LLCP | EA: INACT

17L (OLGA) | 45 kt EX

S: null | H: null



IR BT & Lightning

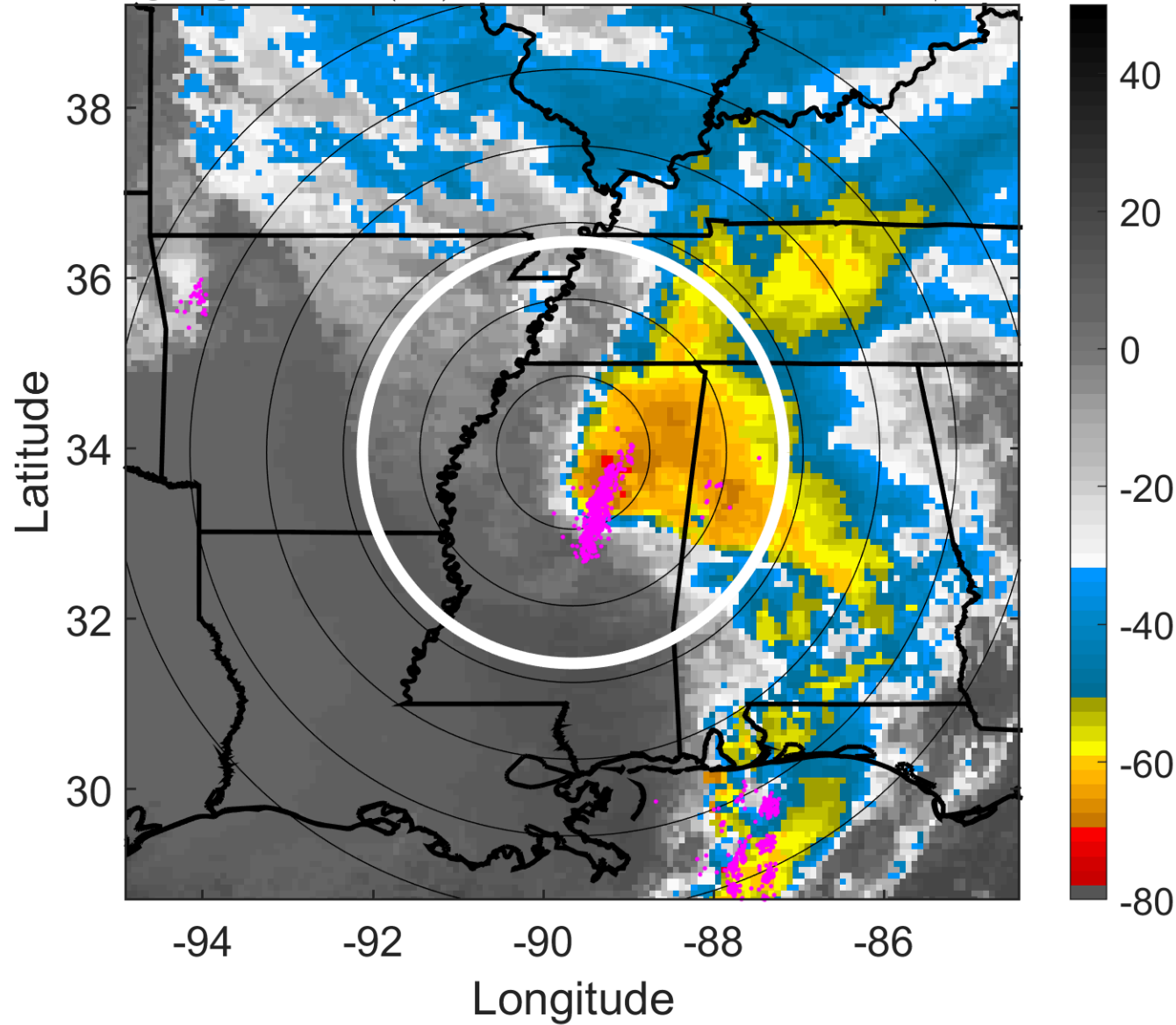
t: 2019102615 (9 LT)

Lightning: 9 LT \pm 1.5 h (dots)

PT: LLCP | EA: INACT

17L (OLGA) | 42.5 kt EX

S: null | H: null



6-h IR BT Differences & Lightning

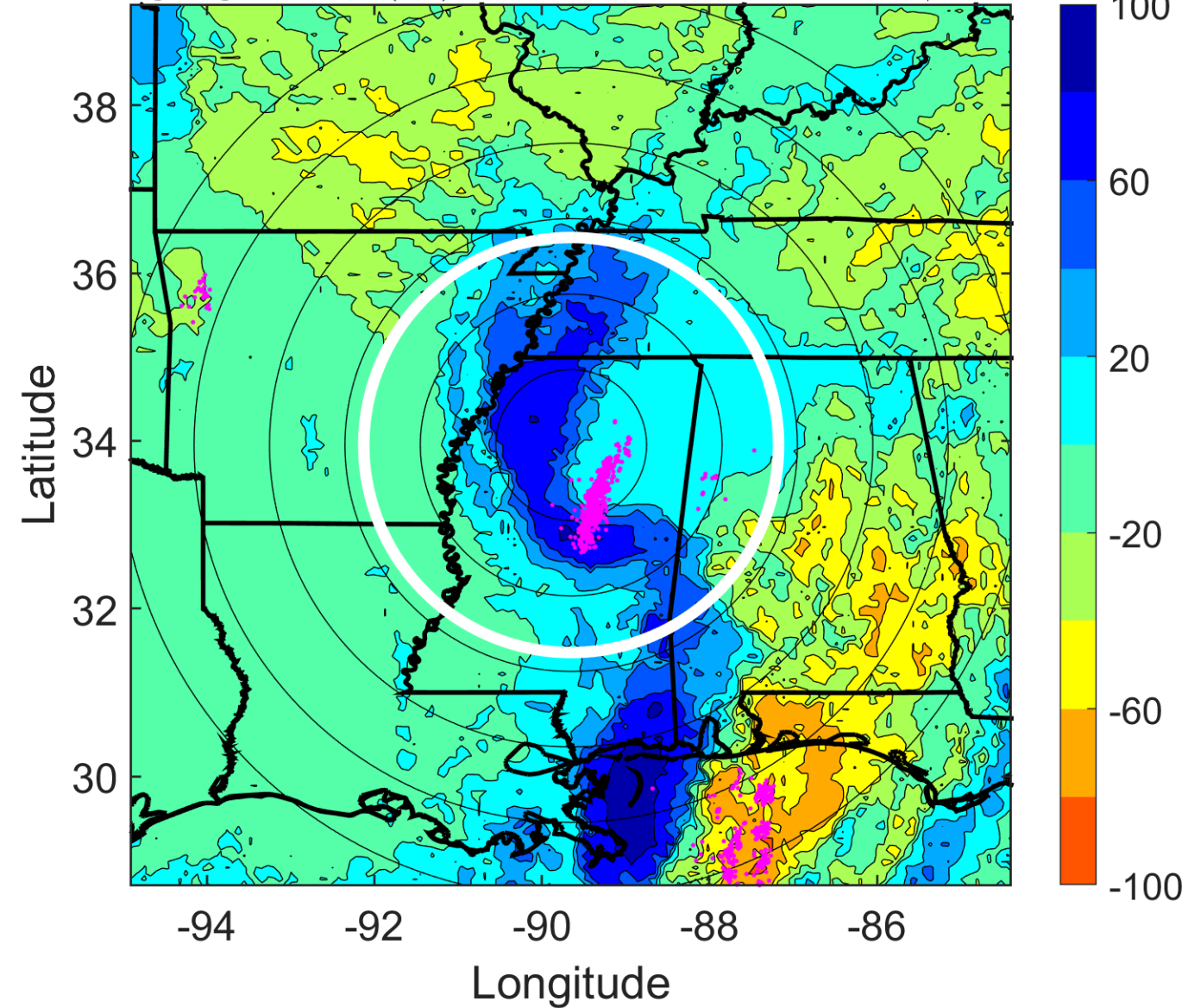
Δ t: 2019102615 (9 LT) - 2019102609 (3 LT)

Lightning: 9 LT \pm 1.5 h (dots)

PT: LLCP | EA: INACT

17L (OLGA) | 42.5 kt EX

S: null | H: null



IR BT & Lightning

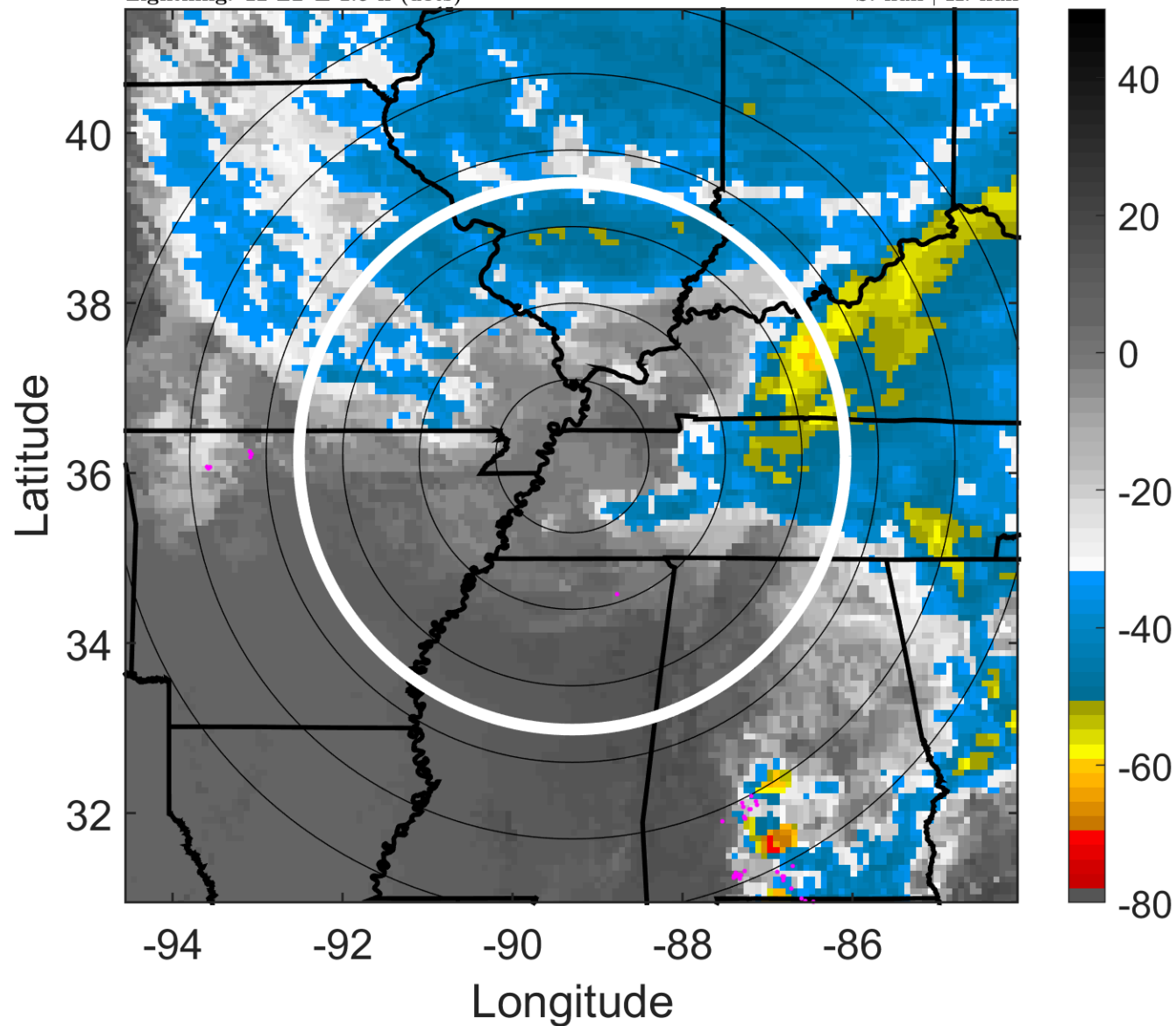
t: 2019102618 (12 LT)

Lightning: 12 LT \pm 1.5 h (dots)

PT: LLCP | EA: INACT

17L (OLGA) | 40 kt EX

S: null | H: null



6-h IR BT Differences & Lightning

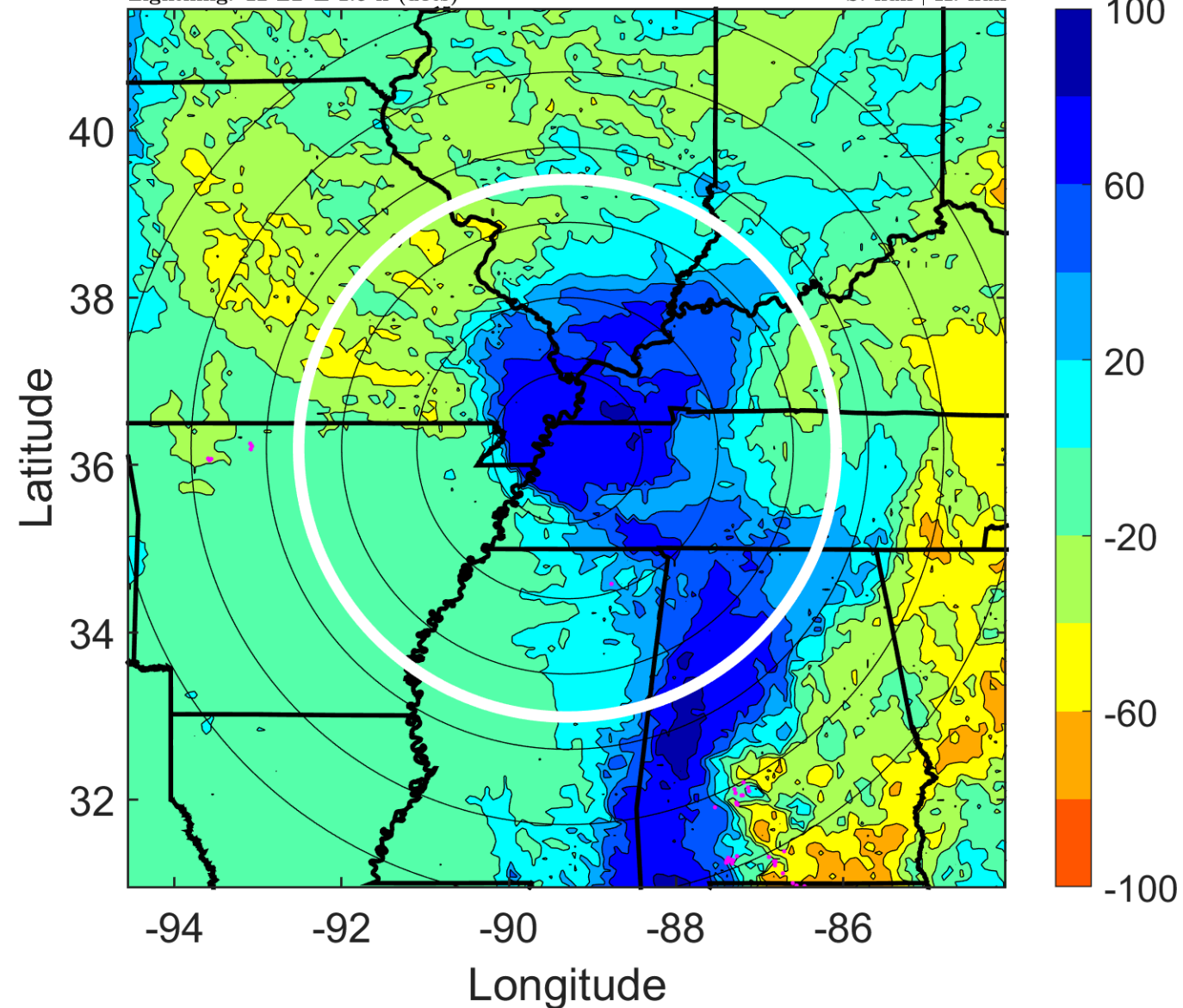
Δ t: 2019102618 (12 LT) - 2019102612 (6 LT)

Lightning: 12 LT \pm 1.5 h (dots)

PT: LLCP | EA: INACT

17L (OLGA) | 40 kt EX

S: null | H: null



IR BT & Lightning

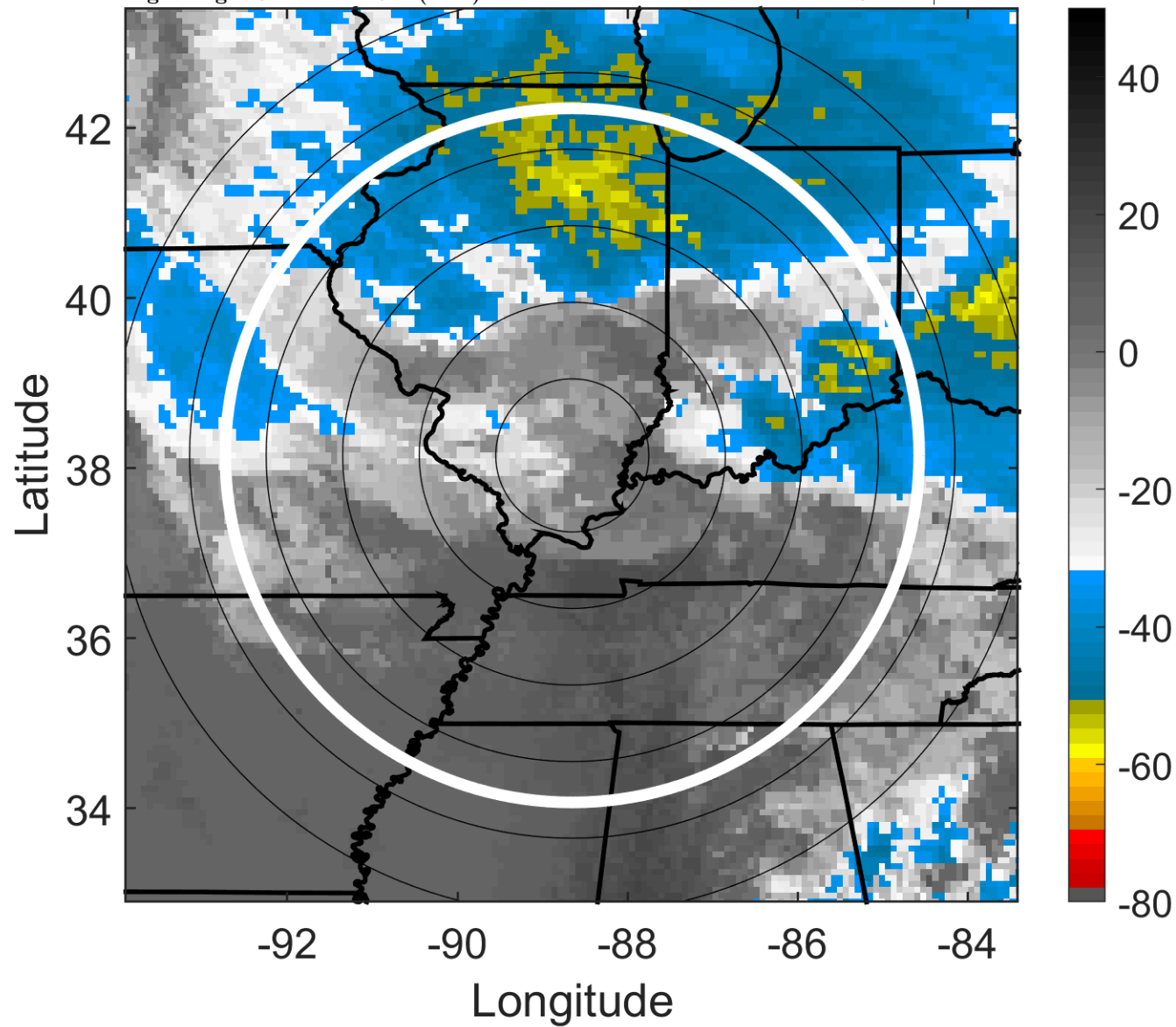
t: 2019102621 (15.1 LT)

Lightning: 15.1 LT \pm 1.5 h (dots)

PT: LLCP | EA: INACT

17L (OLGA) | 35 kt EX

S: null | H: null



6-h IR BT Differences & Lightning

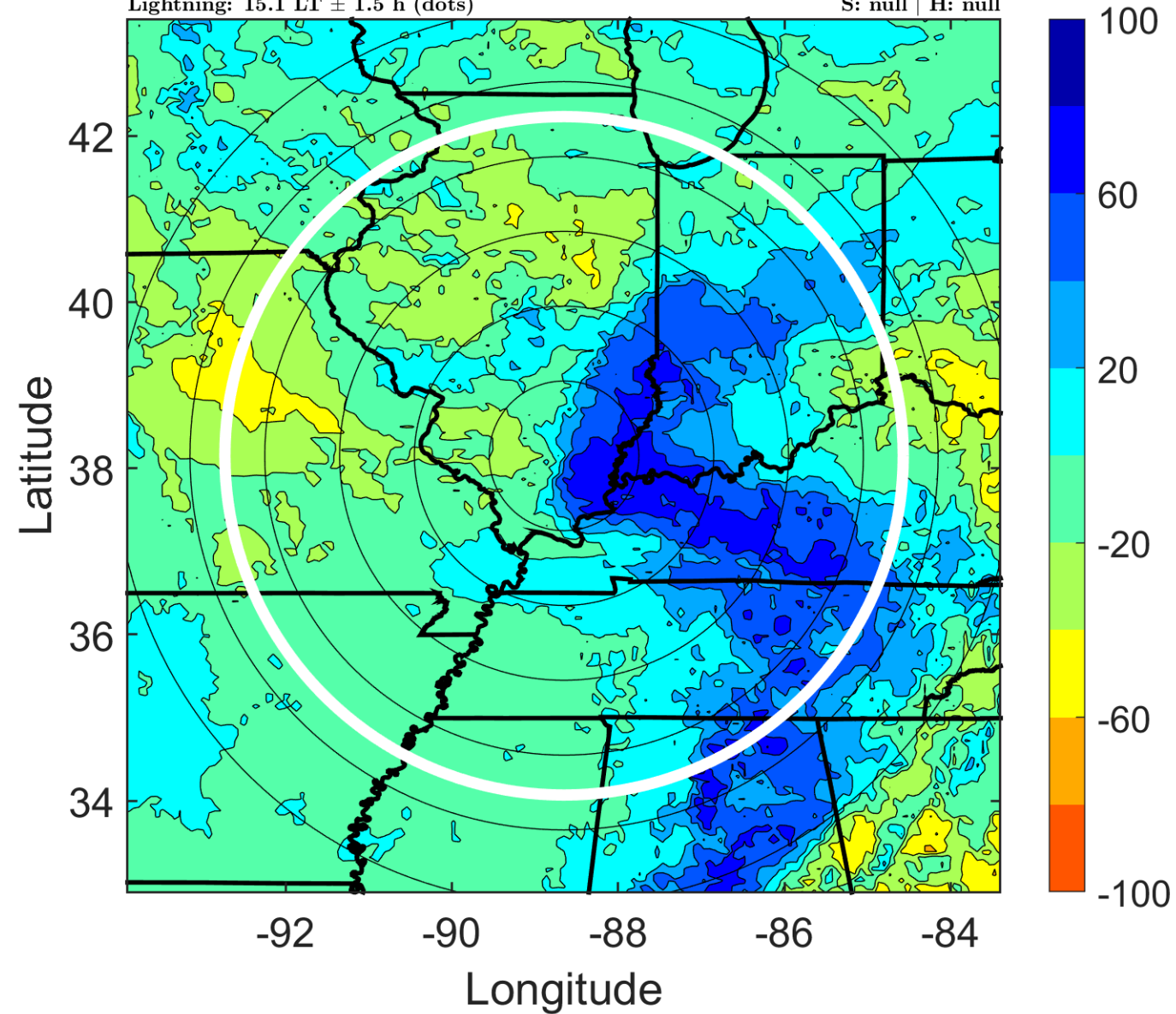
Δ t: 2019102621 (15.1 LT) - 2019102615 (9 LT)

Lightning: 15.1 LT \pm 1.5 h (dots)

PT: LLCP | EA: INACT

17L (OLGA) | 35 kt EX

S: null | H: null



IR BT & Lightning

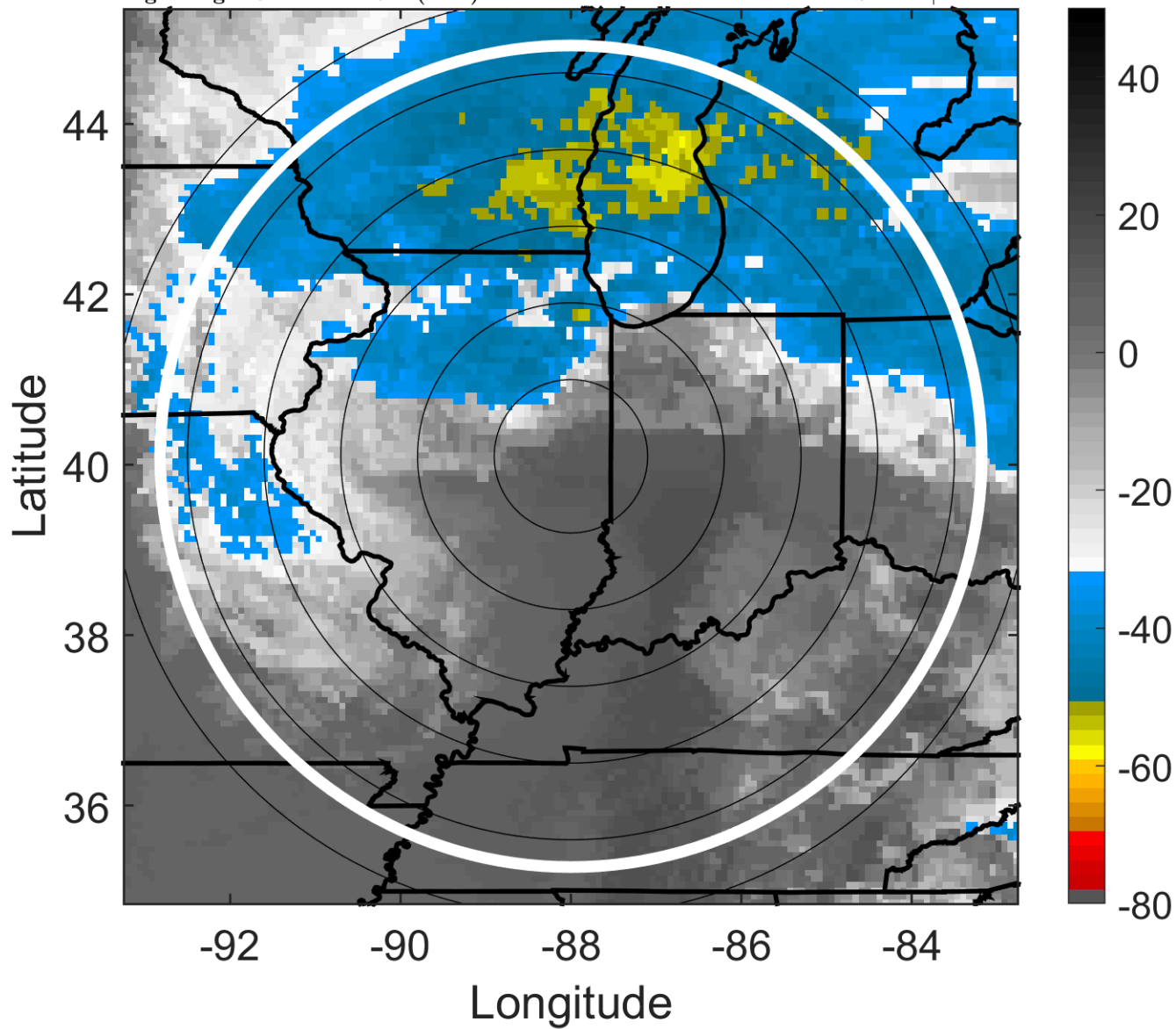
t: 2019102700 (18.1 LT)

Lightning: 18.1 LT \pm 1.5 h (dots)

PT: LLCP | EA: INACT

17L (OLGA) | 30 kt EX

S: null | H: null



6-h IR BT Differences & Lightning

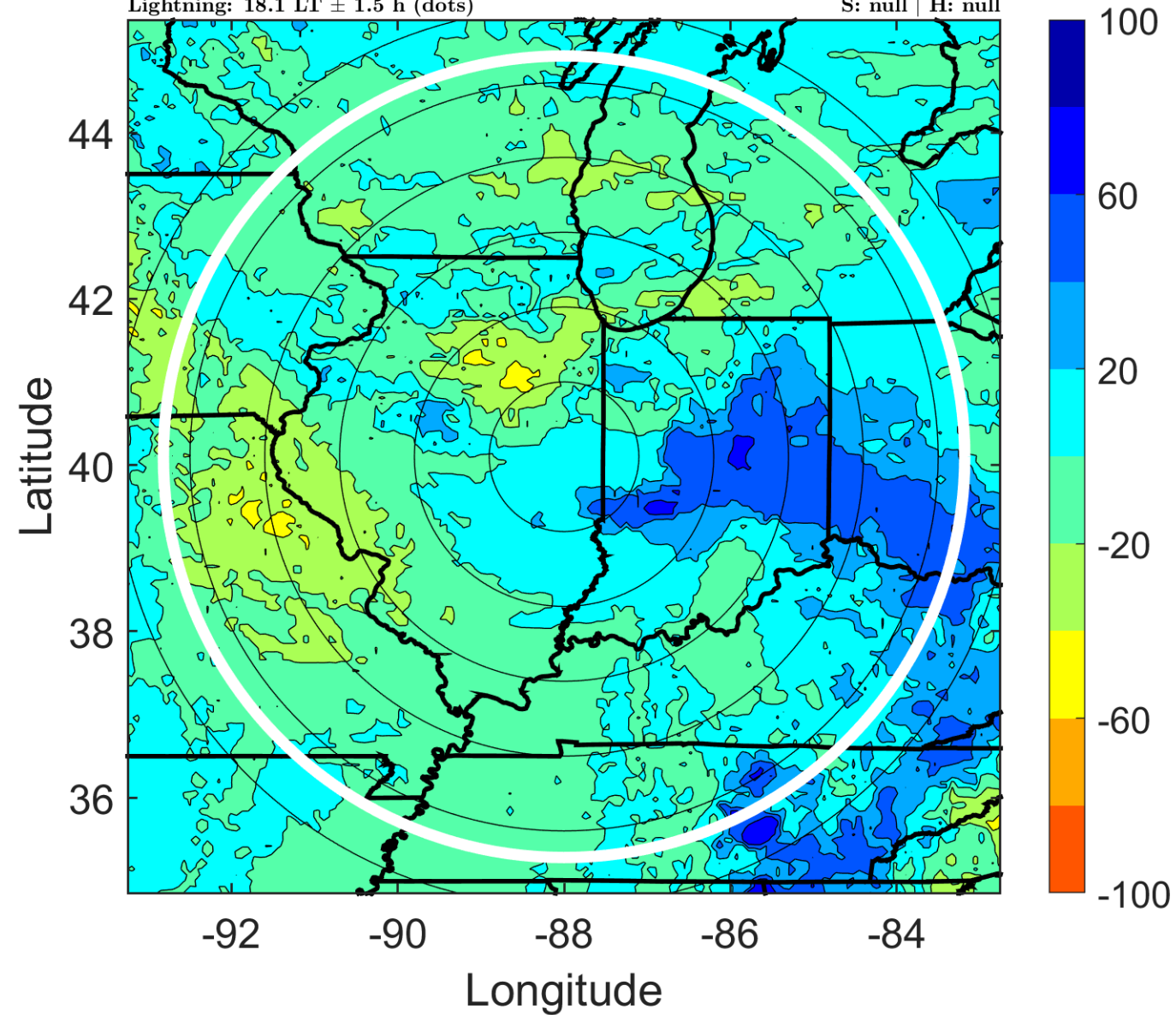
Δ t: 2019102700 (18.1 LT) - 2019102618 (12 LT)

Lightning: 18.1 LT \pm 1.5 h (dots)

PT: LLCP | EA: INACT

17L (OLGA) | 30 kt EX

S: null | H: null



IR BT & Lightning

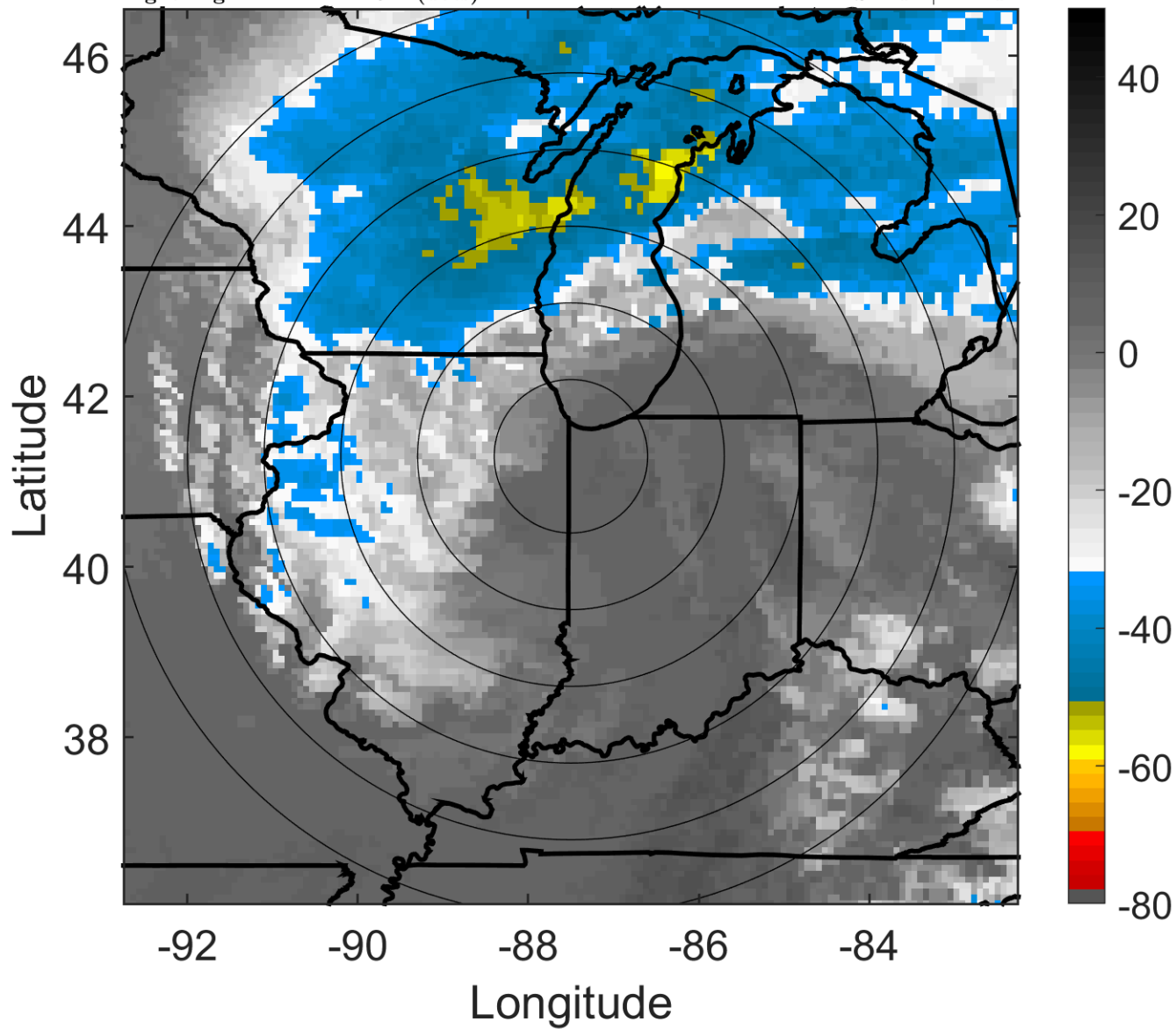
t: 2019102703 (21.2 LT)

Lightning: 21.2 LT \pm 1.5 h (dots)

PT: LLCP | EA: INACT

17L (OLGA) | 30 kt EX

S: null | H: null



6-h IR BT Differences & Lightning

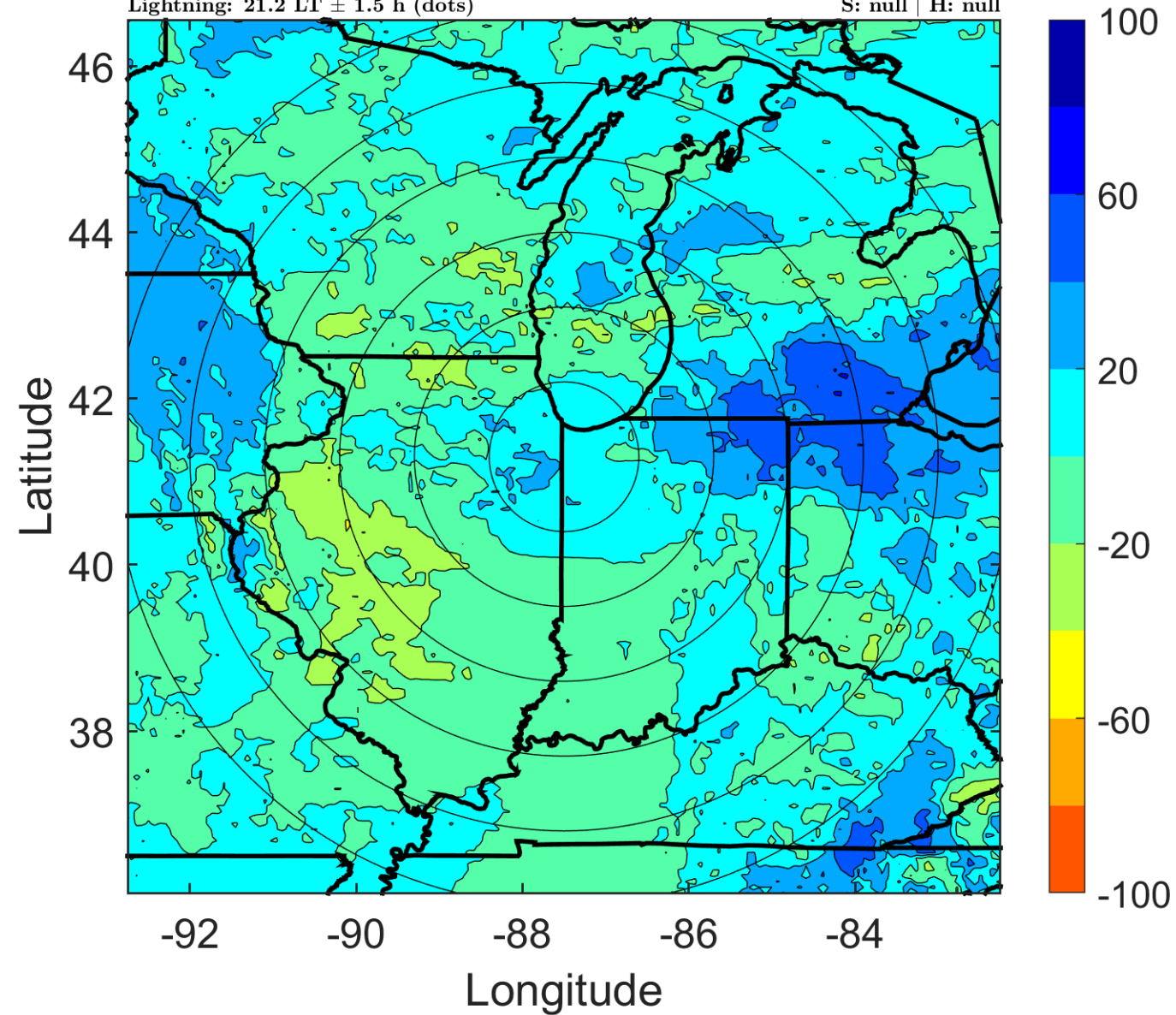
Δ t: 2019102703 (21.2 LT) - 2019102621 (15.1 LT)

Lightning: 21.2 LT \pm 1.5 h (dots)

PT: LLCP | EA: INACT

17L (OLGA) | 30 kt EX

S: null | H: null



IR BT & Lightning

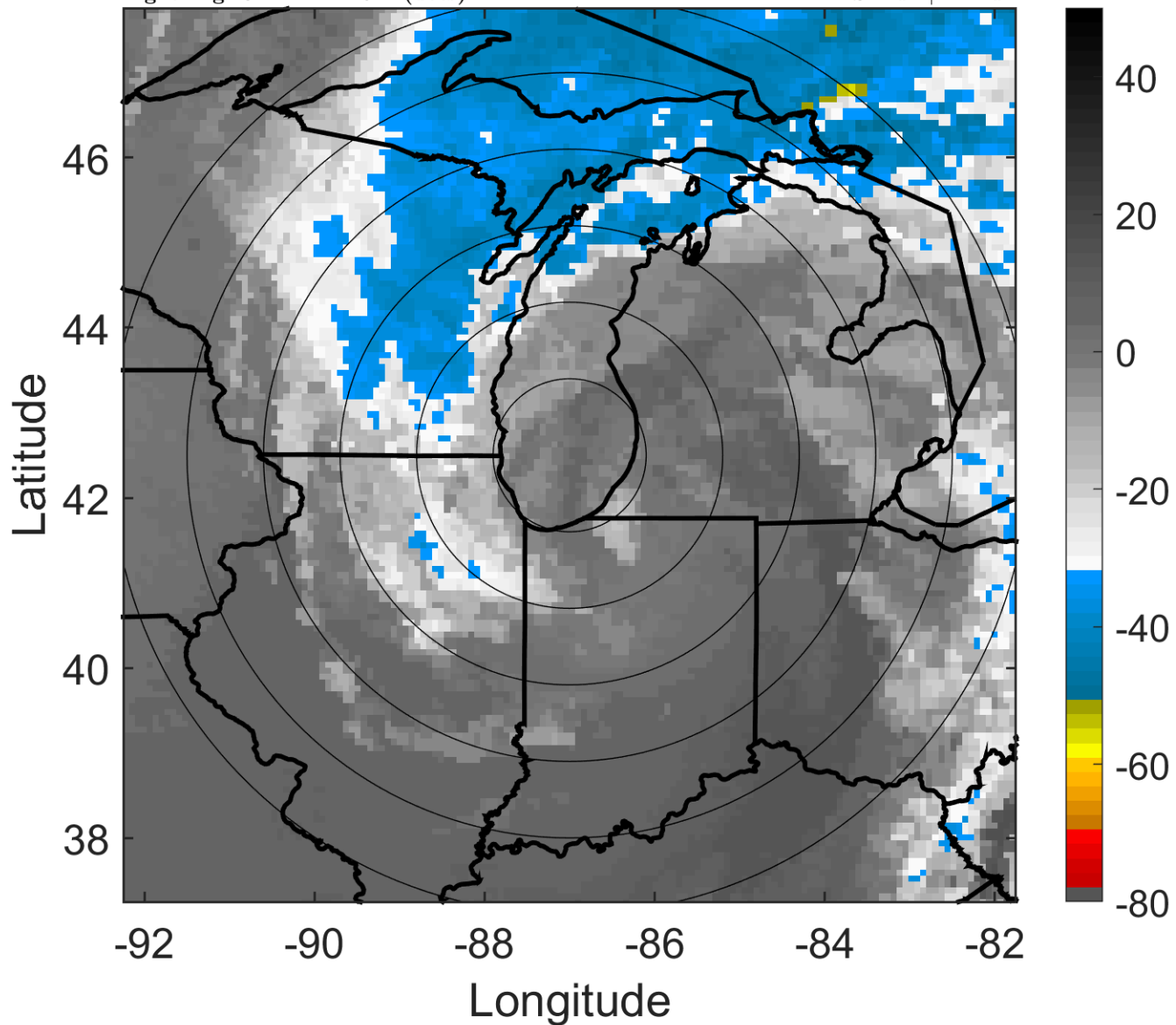
t: 2019102706 (0.2 LT)

Lightning: 0.2 LT \pm 1.5 h (dots)

LAND EFFECTS

17L (OLGA) | 30 kt EX

S: null | H: null



6-h IR BT Differences & Lightning

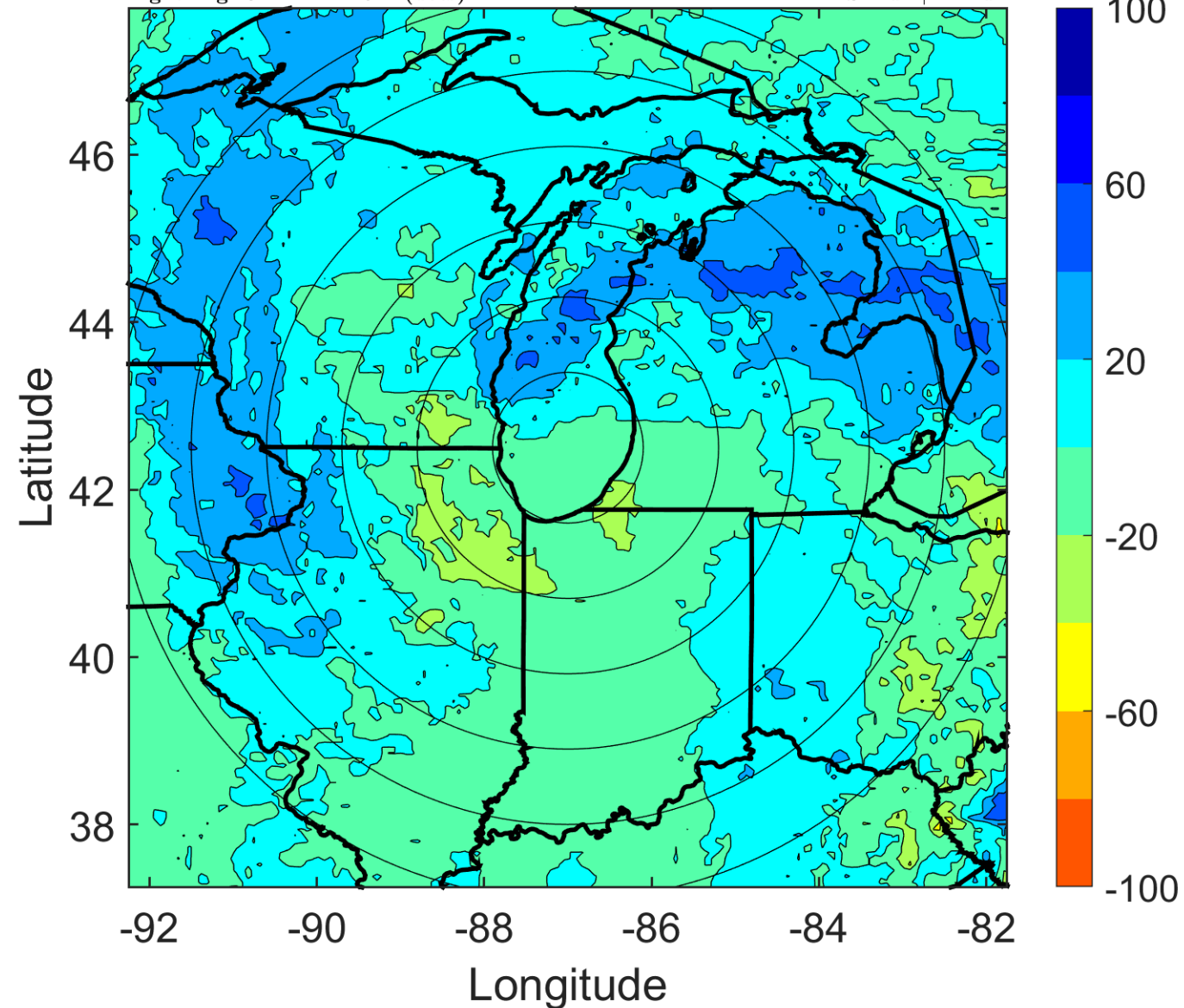
Δ t: 2019102706 (0.2 LT) - 2019102700 (18.1 LT)

Lightning: 0.2 LT \pm 1.5 h (dots)

LAND EFFECTS

17L (OLGA) | 30 kt EX

S: null | H: null



IR BT & Lightning

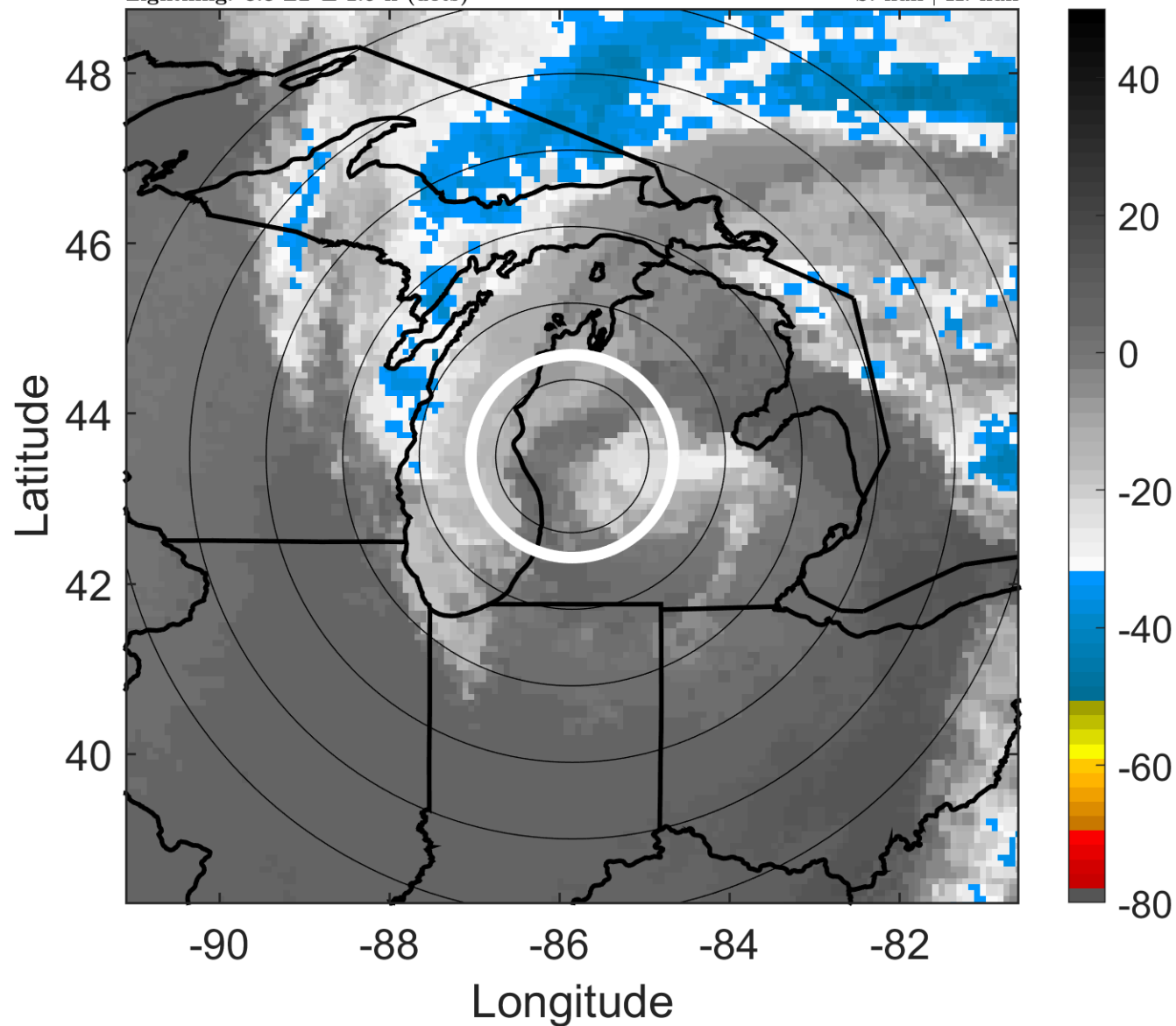
t: 2019102709 (3.3 LT)

Lightning: 3.3 LT \pm 1.5 h (dots)

LAND EFFECTS

17L (OLGA) | 30 kt EX

S: null | H: null



6-h IR BT Differences & Lightning

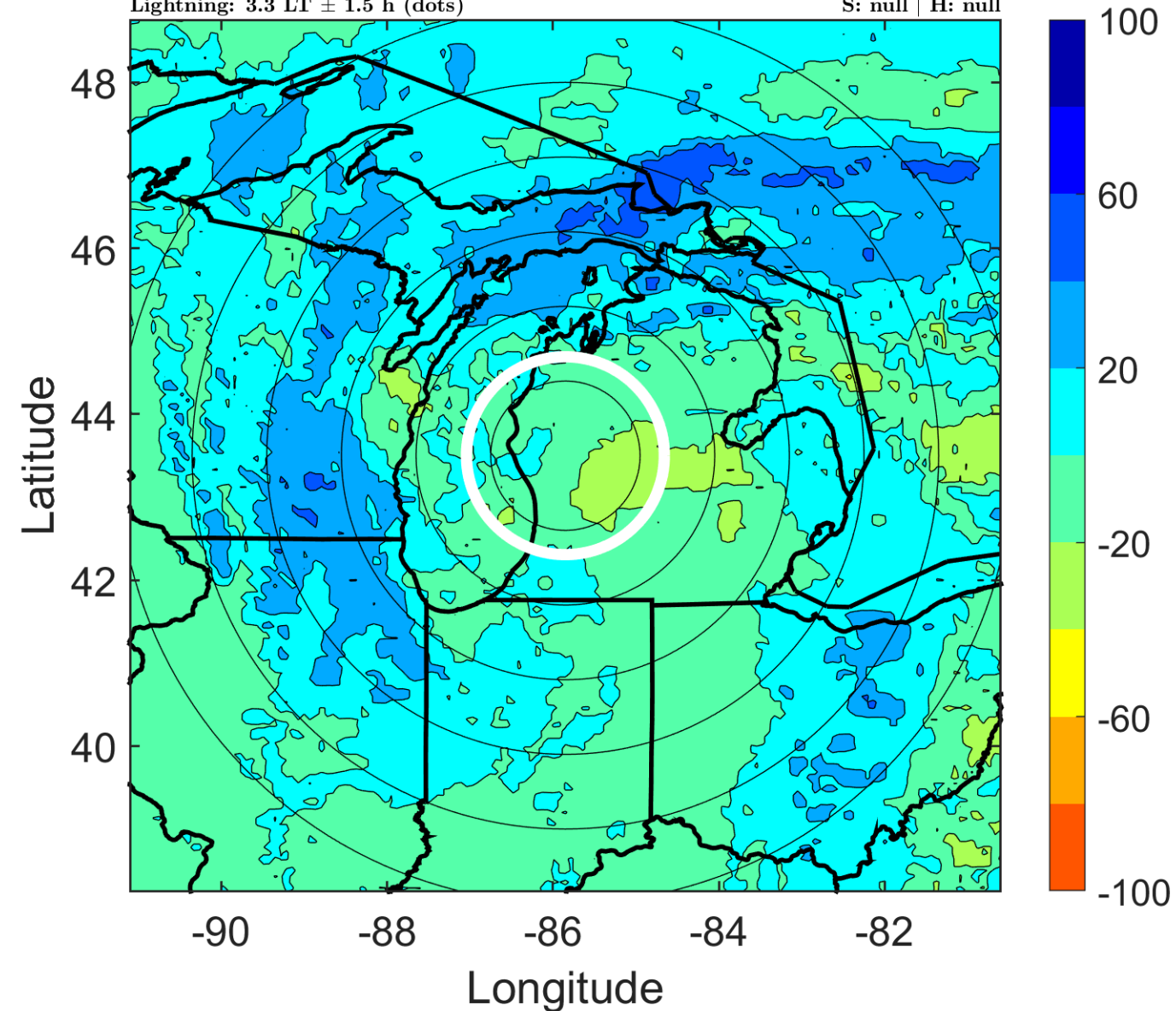
Δ t: 2019102709 (3.3 LT) - 2019102703 (21.2 LT)

Lightning: 3.3 LT \pm 1.5 h (dots)

LAND EFFECTS

17L (OLGA) | 30 kt EX

S: null | H: null



IR BT & Lightning

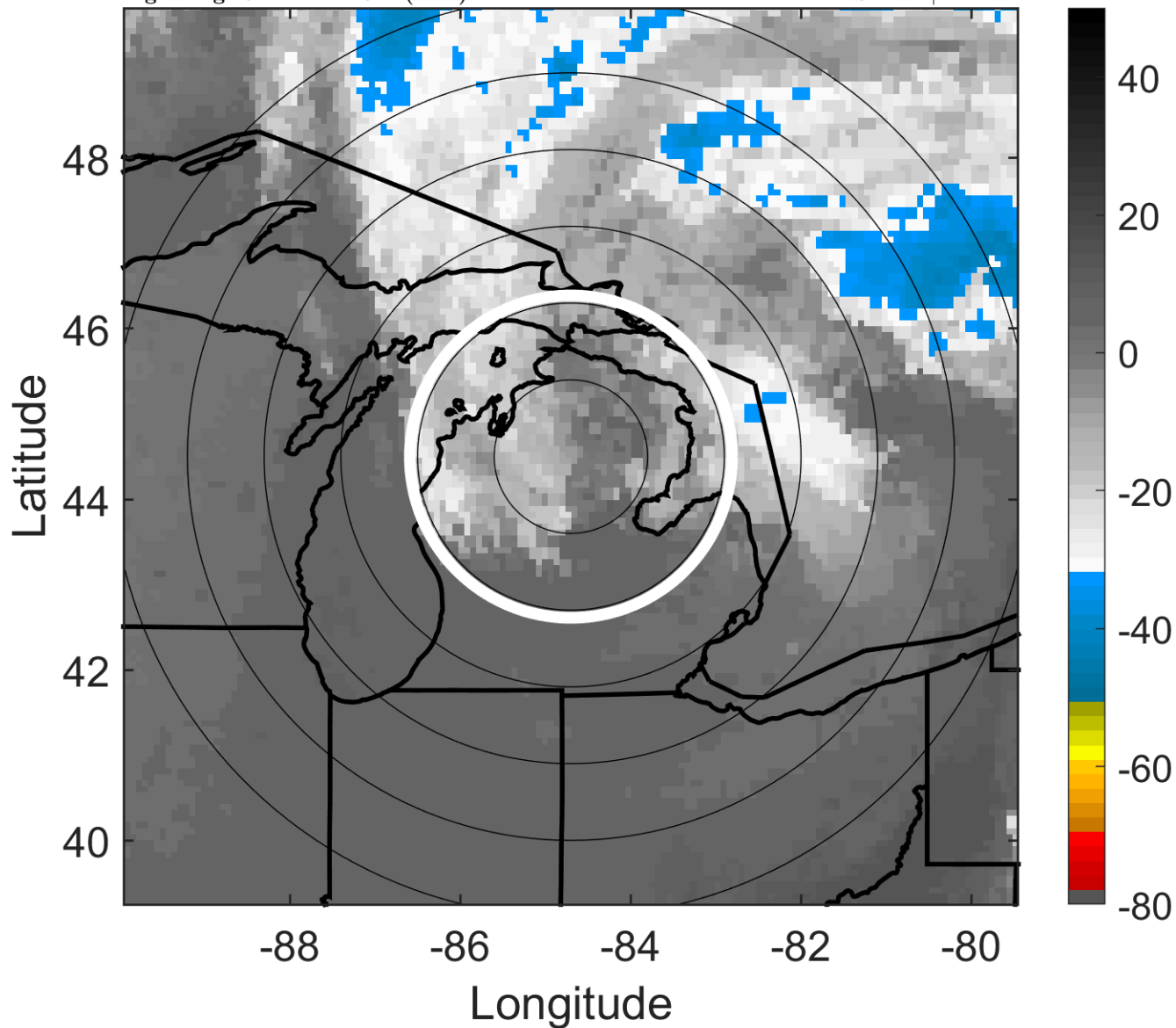
t: 2019102712 (6.4 LT)

Lightning: 6.4 LT \pm 1.5 h (dots)

LAND EFFECTS

17L (OLGA) | 30 kt EX

S: null | H: null



6-h IR BT Differences & Lightning

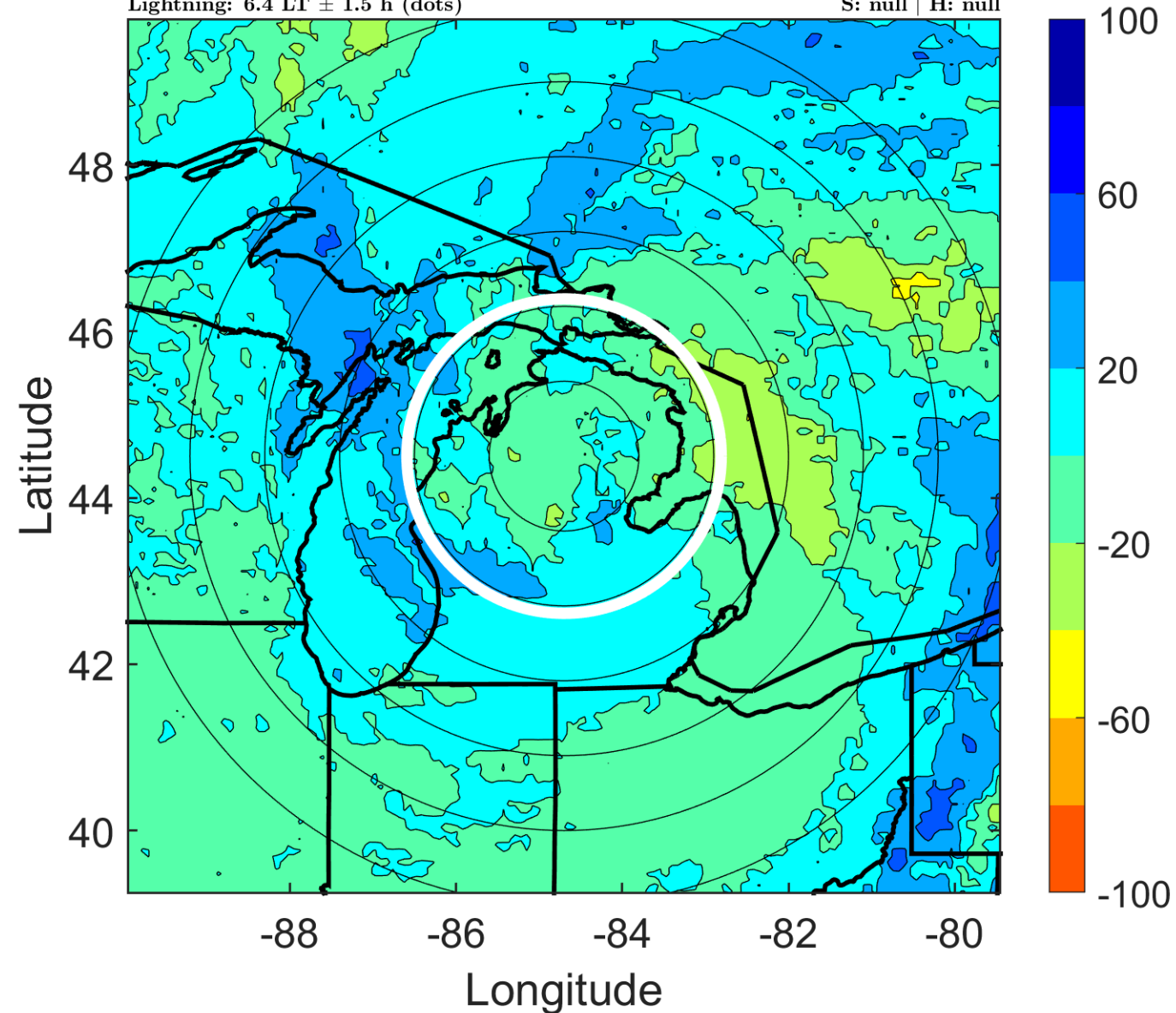
Δ t: 2019102712 (6.4 LT) - 2019102706 (0.2 LT)

Lightning: 6.4 LT \pm 1.5 h (dots)

LAND EFFECTS

17L (OLGA) | 30 kt EX

S: null | H: null



IR BT & Lightning

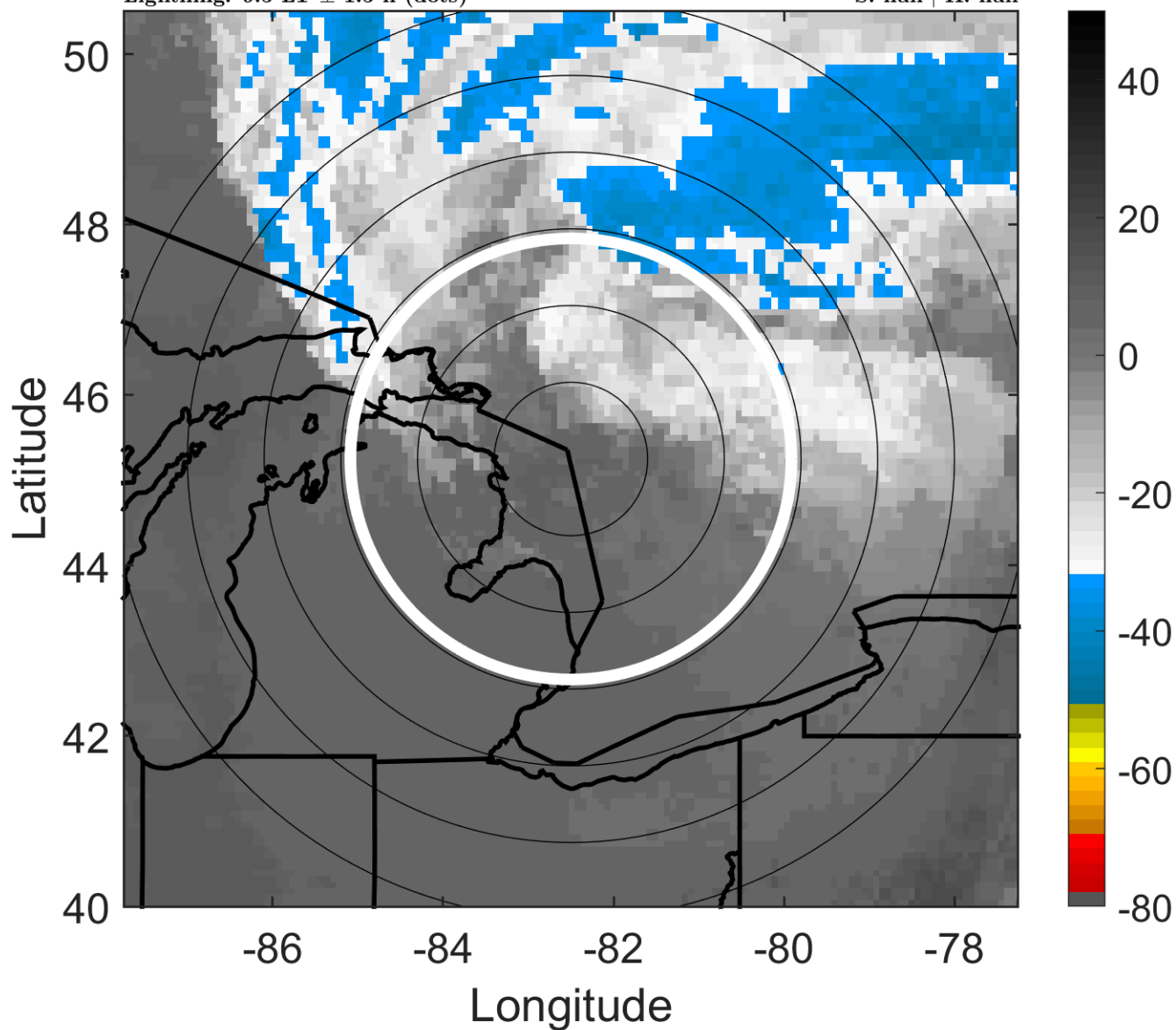
t: 2019102715 (9.5 LT)

Lightning: 9.5 LT \pm 1.5 h (dots)

LAND EFFECTS

17L (OLGA) | 30 kt EX

S: null | H: null



6-h IR BT Differences & Lightning

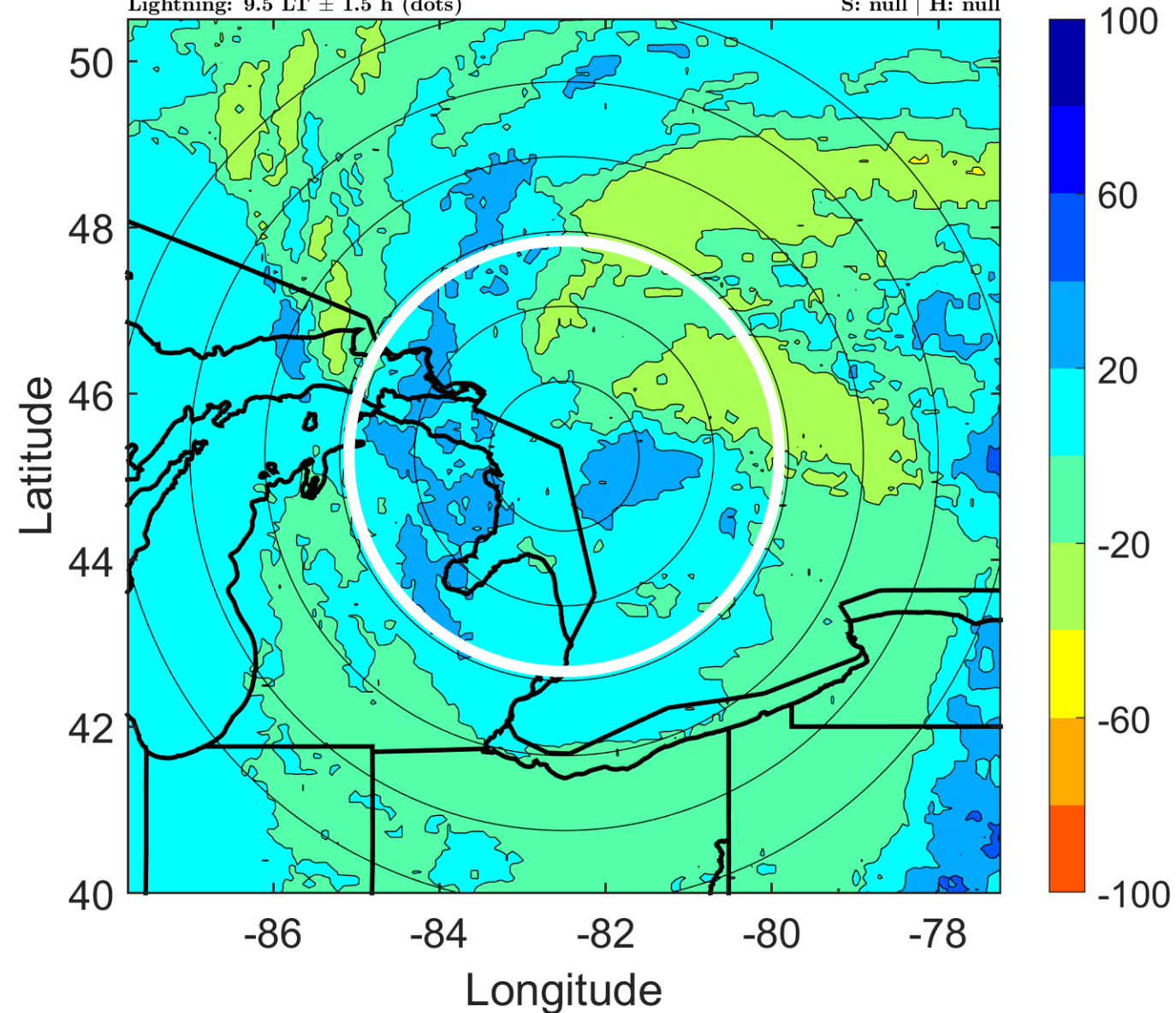
Δ t: 2019102715 (9.5 LT) - 2019102709 (3.3 LT)

Lightning: 9.5 LT \pm 1.5 h (dots)

LAND EFFECTS

17L (OLGA) | 30 kt EX

S: null | H: null



IR BT & Lightning

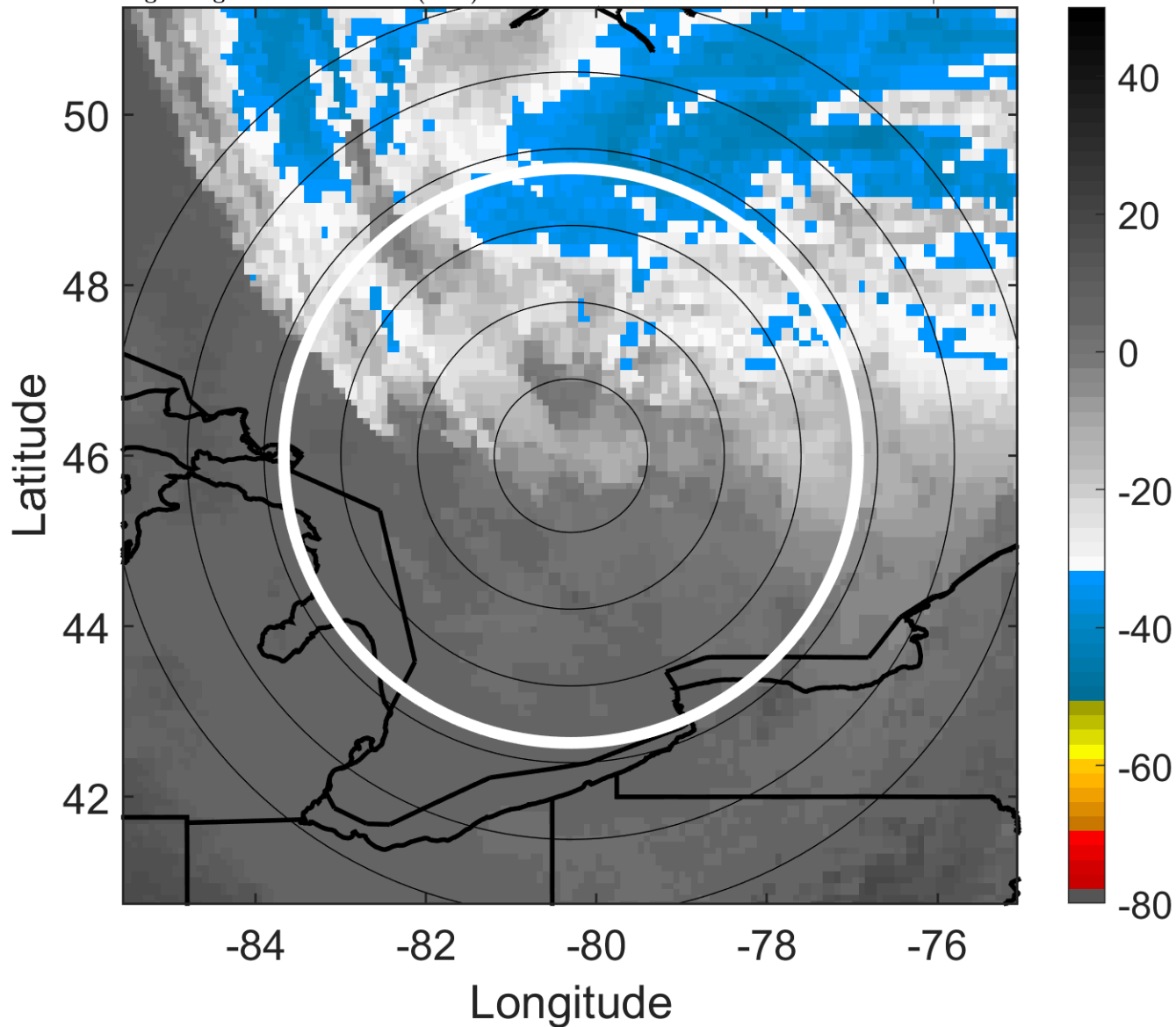
t: 2019102718 (12.6 LT)

Lightning: 12.6 LT \pm 1.5 h (dots)

LAND EFFECTS

17L (OLGA) | 30 kt EX

S: null | H: null



6-h IR BT Differences & Lightning

Δ t: 2019102718 (12.6 LT) - 2019102712 (6.4 LT)

Lightning: 12.6 LT \pm 1.5 h (dots)

LAND EFFECTS

17L (OLGA) | 30 kt EX

S: null | H: null

