

IR BT & Lightning

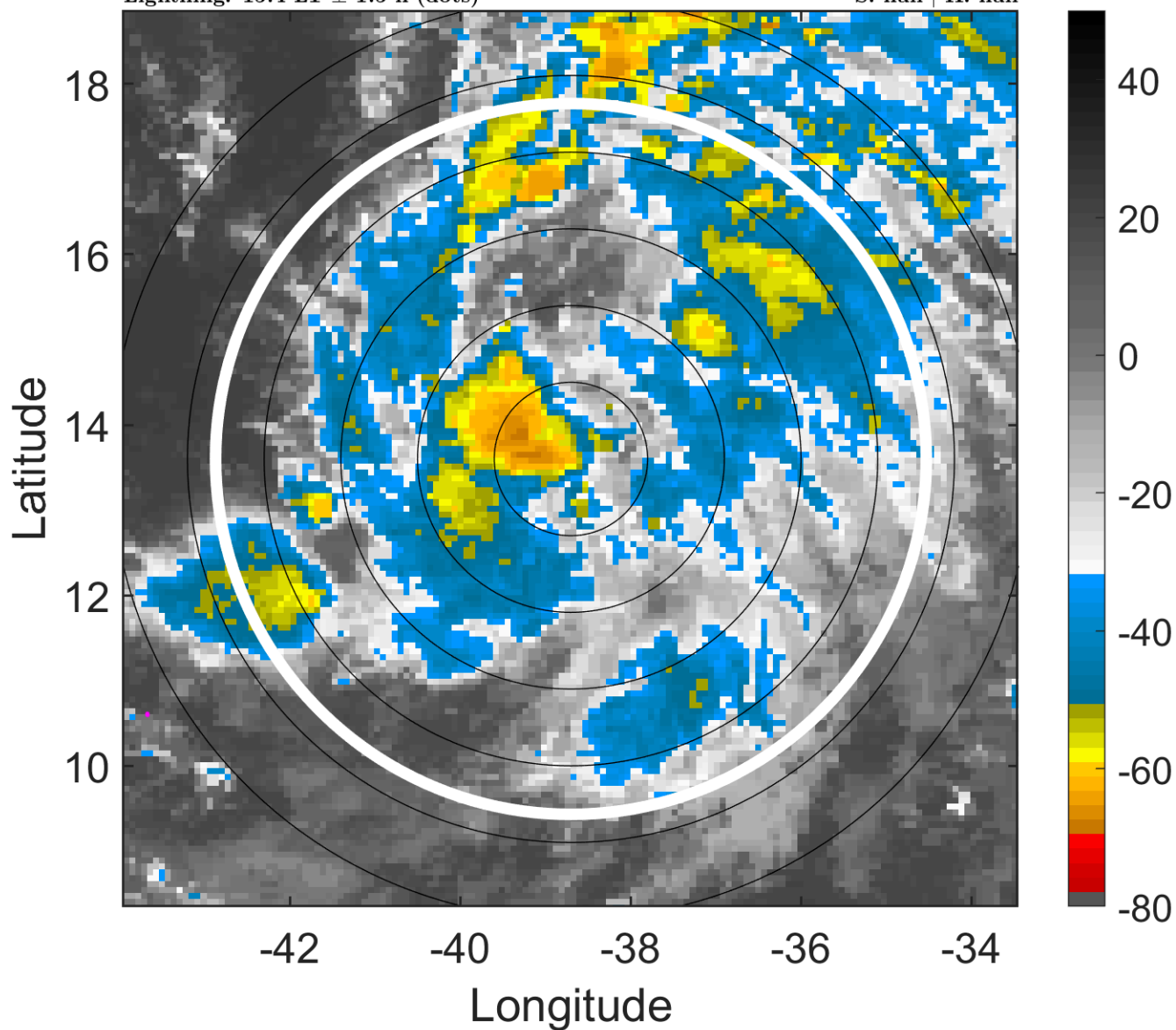
t: 2012100218 (15.4 LT)

Lightning: 15.4 LT \pm 1.5 h (dots)

PT: SLCP | EA: INACT

15L (OSCAR) | 25 kt LO

S: null | H: null



6-h IR BT Differences & Lightning

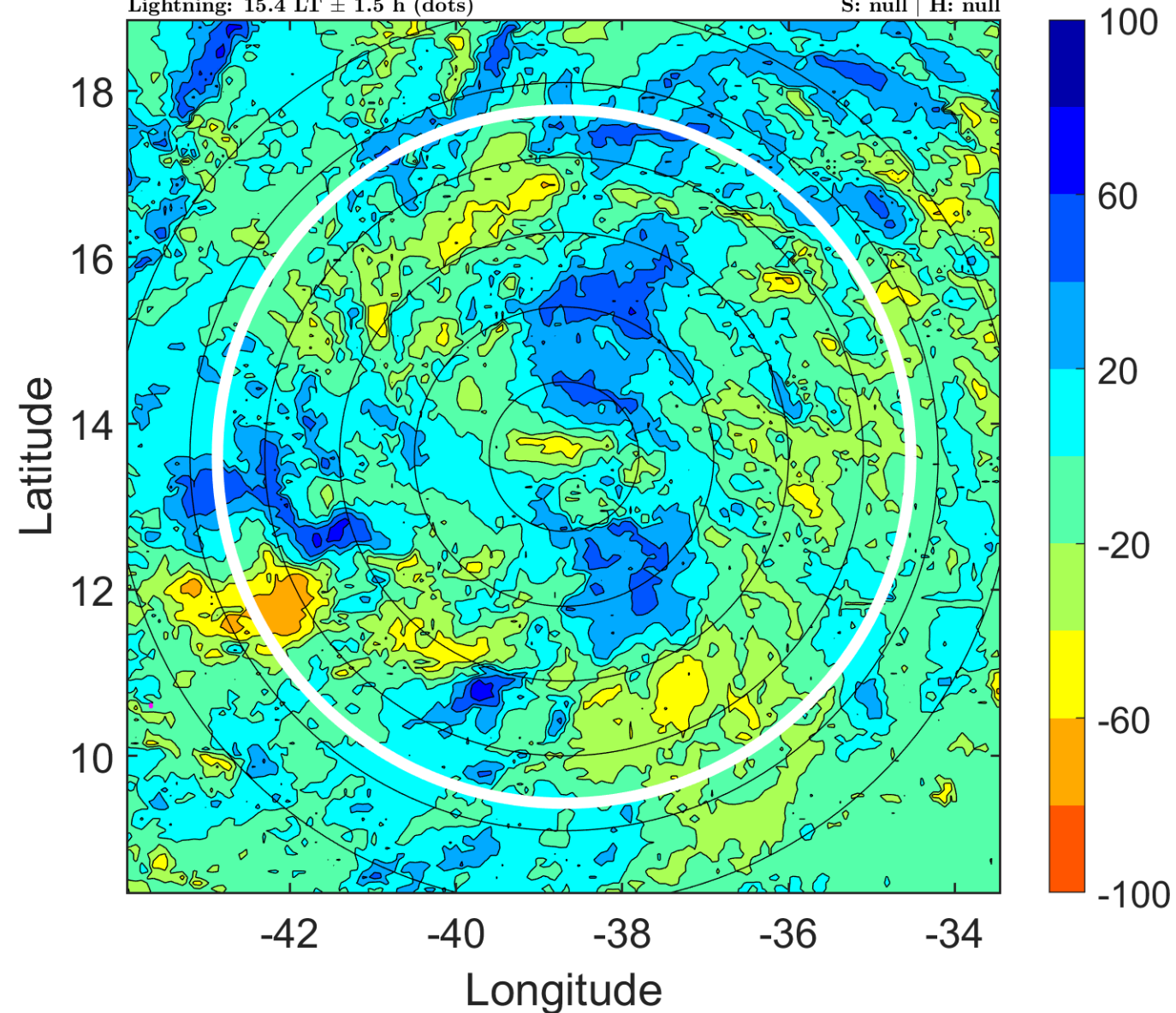
Δ t: 2012100218 (15.4 LT) - 2012100212 (9.5 LT)

Lightning: 15.4 LT \pm 1.5 h (dots)

PT: SLCP | EA: INACT

15L (OSCAR) | 25 kt LO

S: null | H: null



IR BT & Lightning

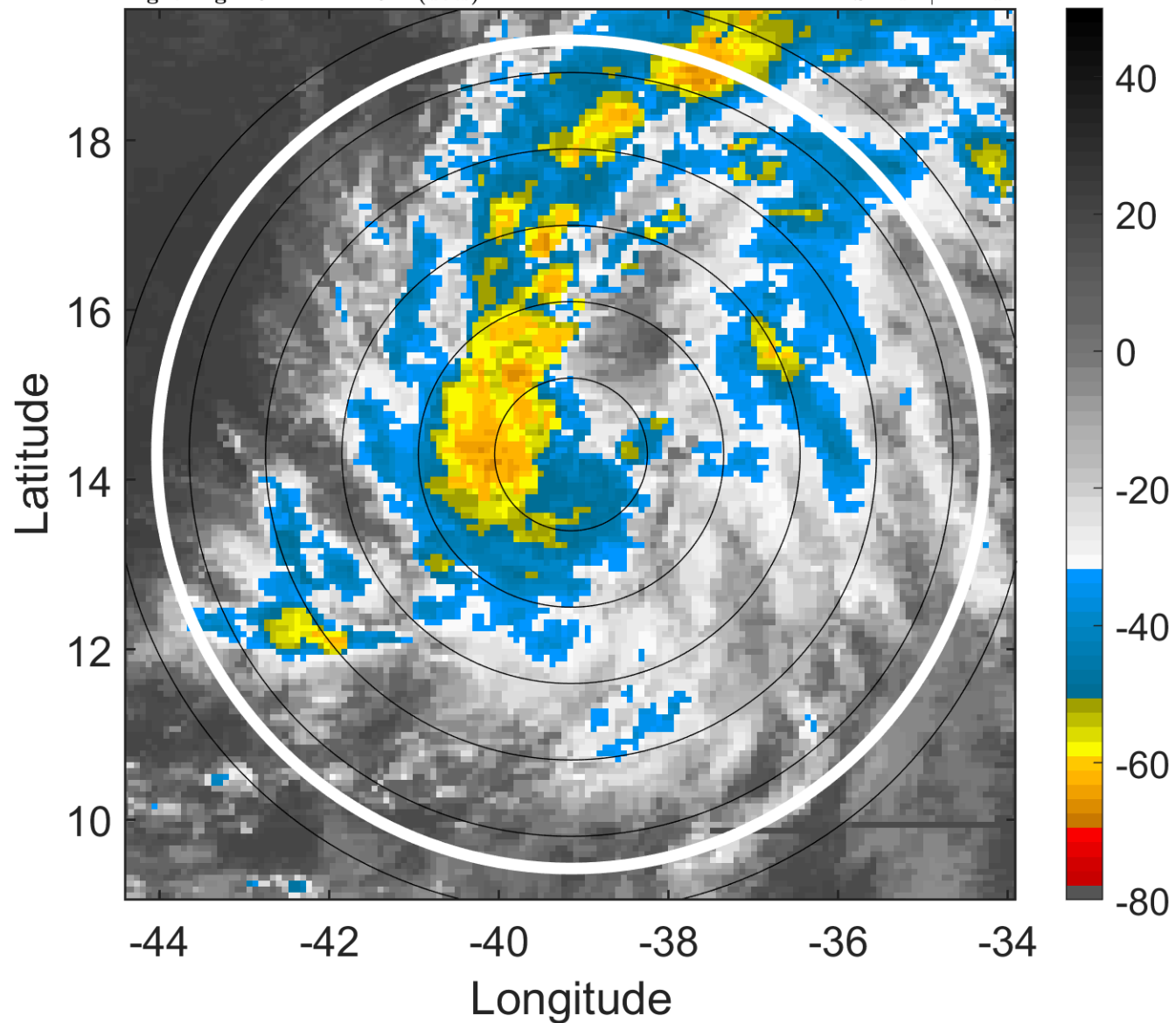
t: 2012100221 (18.4 LT)

Lightning: 18.4 LT \pm 1.5 h (dots)

PT: SLCP | EA: INACT

15L (OSCAR) | 27.5 kt LO

S: null | H: null



6-h IR BT Differences & Lightning

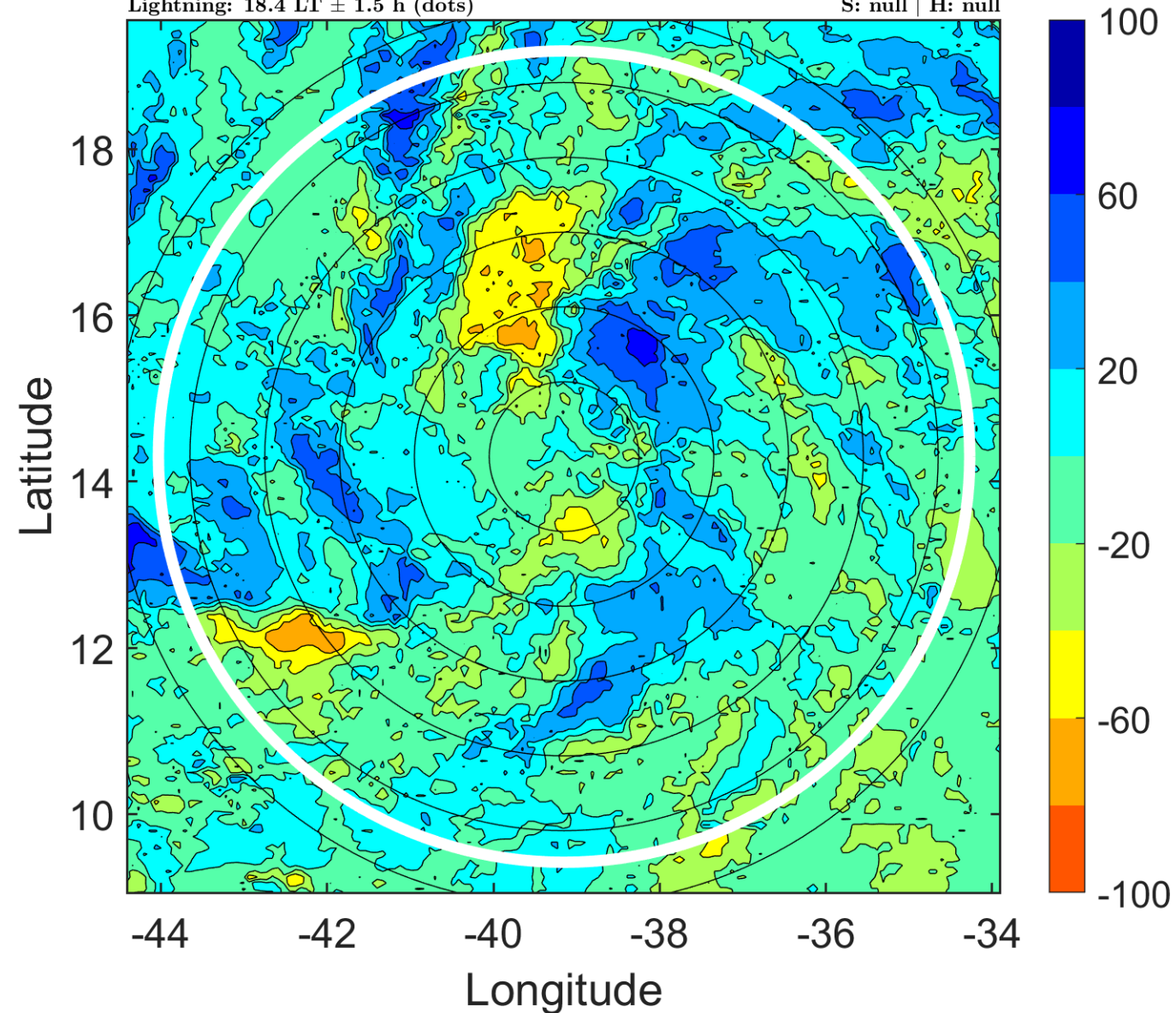
Δ t: 2012100221 (18.4 LT) - 2012100215 (12.4 LT)

Lightning: 18.4 LT \pm 1.5 h (dots)

PT: SLCP | EA: INACT

15L (OSCAR) | 27.5 kt LO

S: null | H: null



IR BT & Lightning

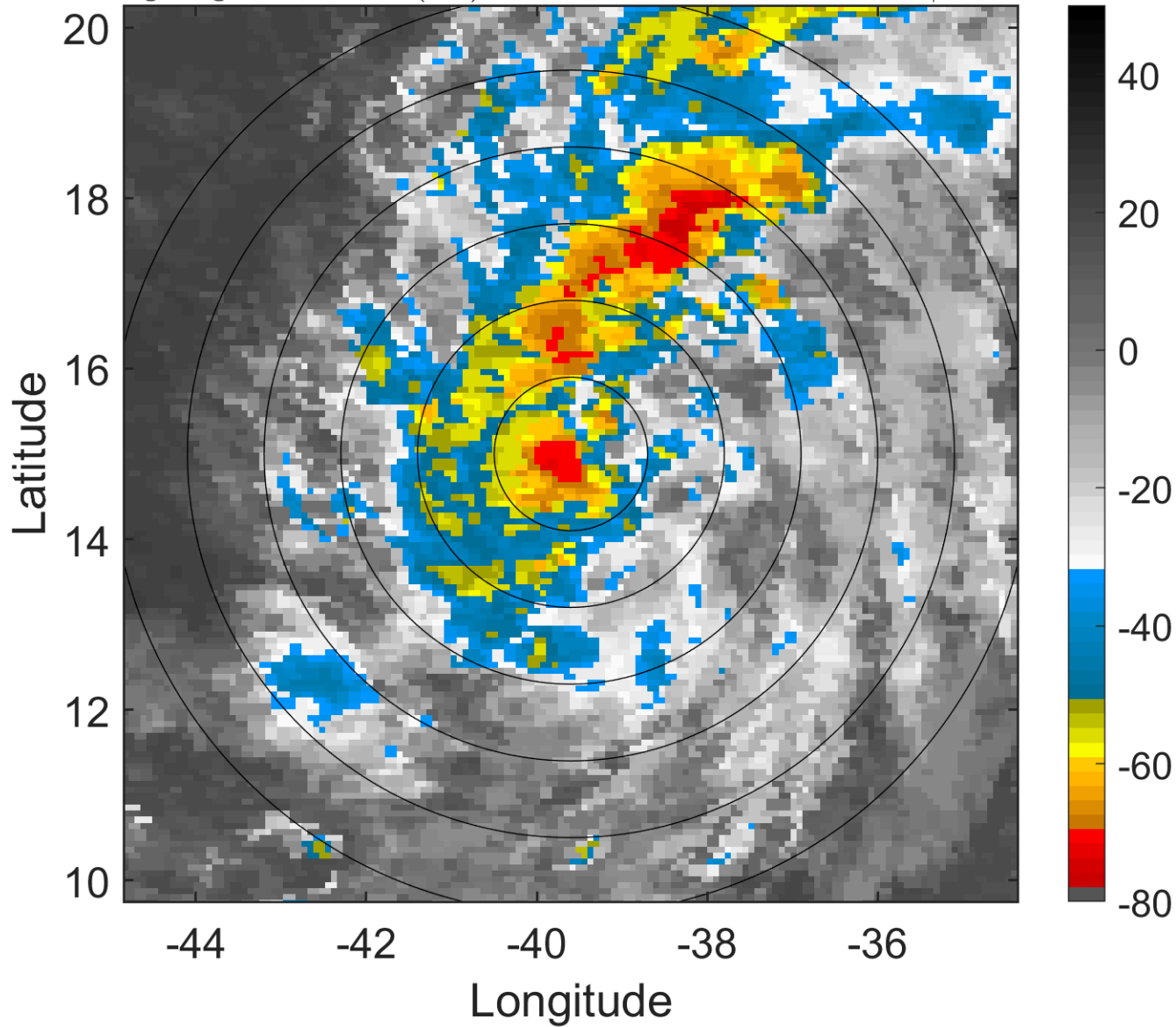
t: 2012100300 (21.4 LT)

Lightning: 21.4 LT \pm 1.5 h (dots)

PT: SLCP | EA: INACT

15L (OSCAR) | 30 kt LO

S: null | H: null



6-h IR BT Differences & Lightning

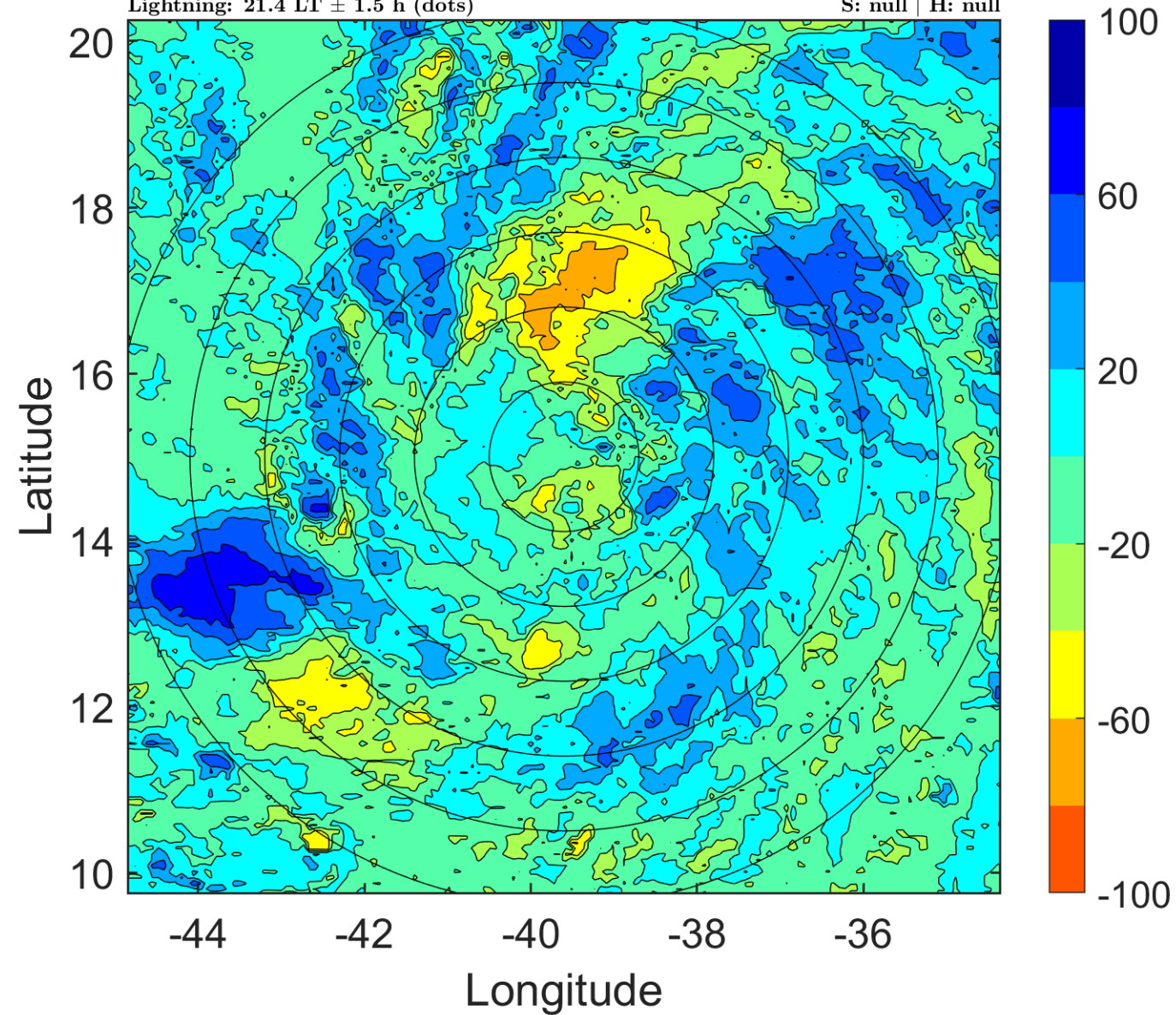
Δ t: 2012100300 (21.4 LT) - 2012100218 (15.4 LT)

Lightning: 21.4 LT \pm 1.5 h (dots)

PT: SLCP | EA: INACT

15L (OSCAR) | 30 kt LO

S: null | H: null



IR BT & Lightning

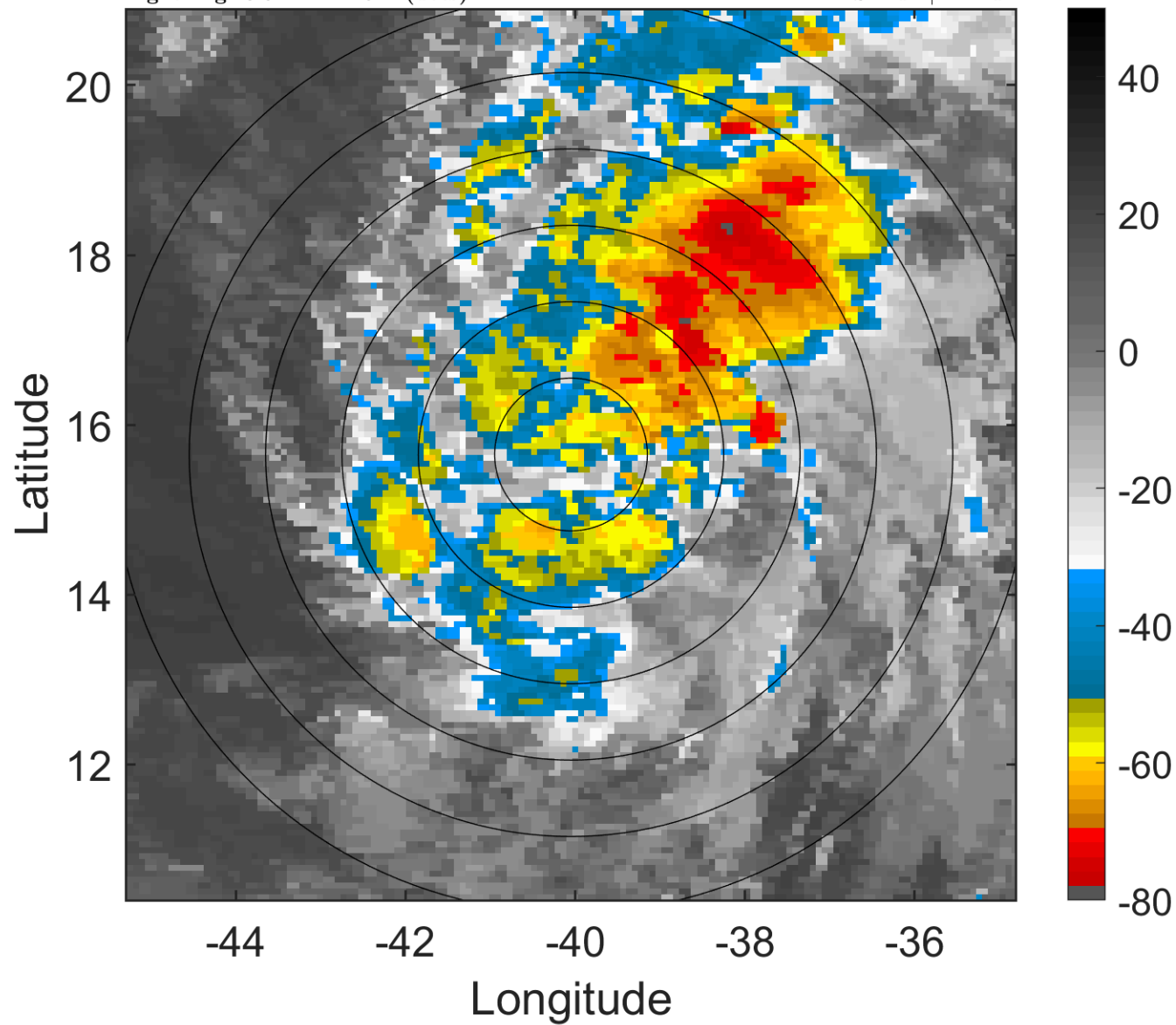
t: 2012100303 (0.3 LT)

Lightning: 0.3 LT \pm 1.5 h (dots)

PT: LLCP | EA: INACT

15L (OSCAR) | 30 kt LO

S: null | H: null



6-h IR BT Differences & Lightning

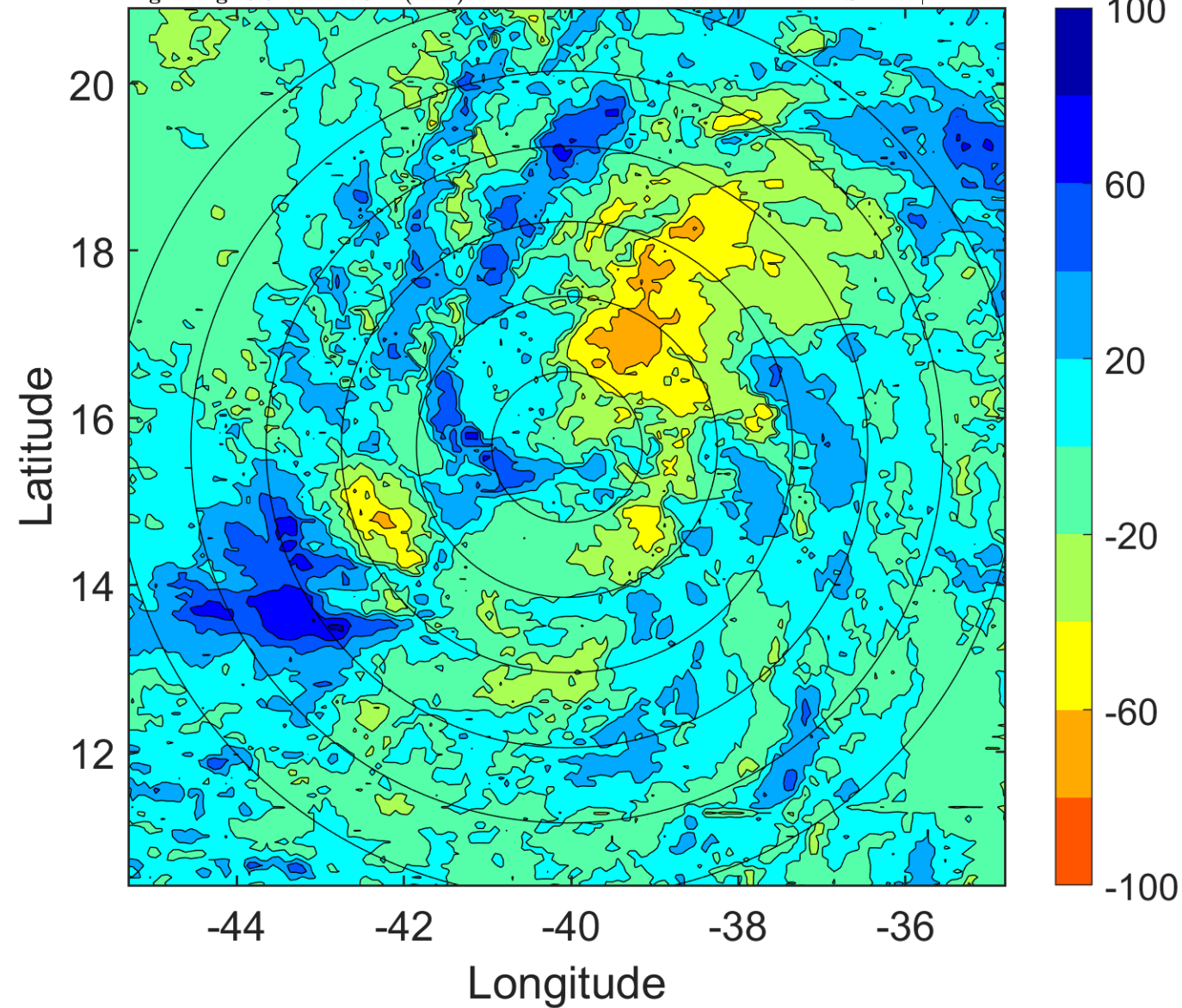
Δ t: 2012100303 (0.3 LT) - 2012100221 (18.4 LT)

Lightning: 0.3 LT \pm 1.5 h (dots)

PT: LLCP | EA: INACT

15L (OSCAR) | 30 kt LO

S: null | H: null



IR BT & Lightning

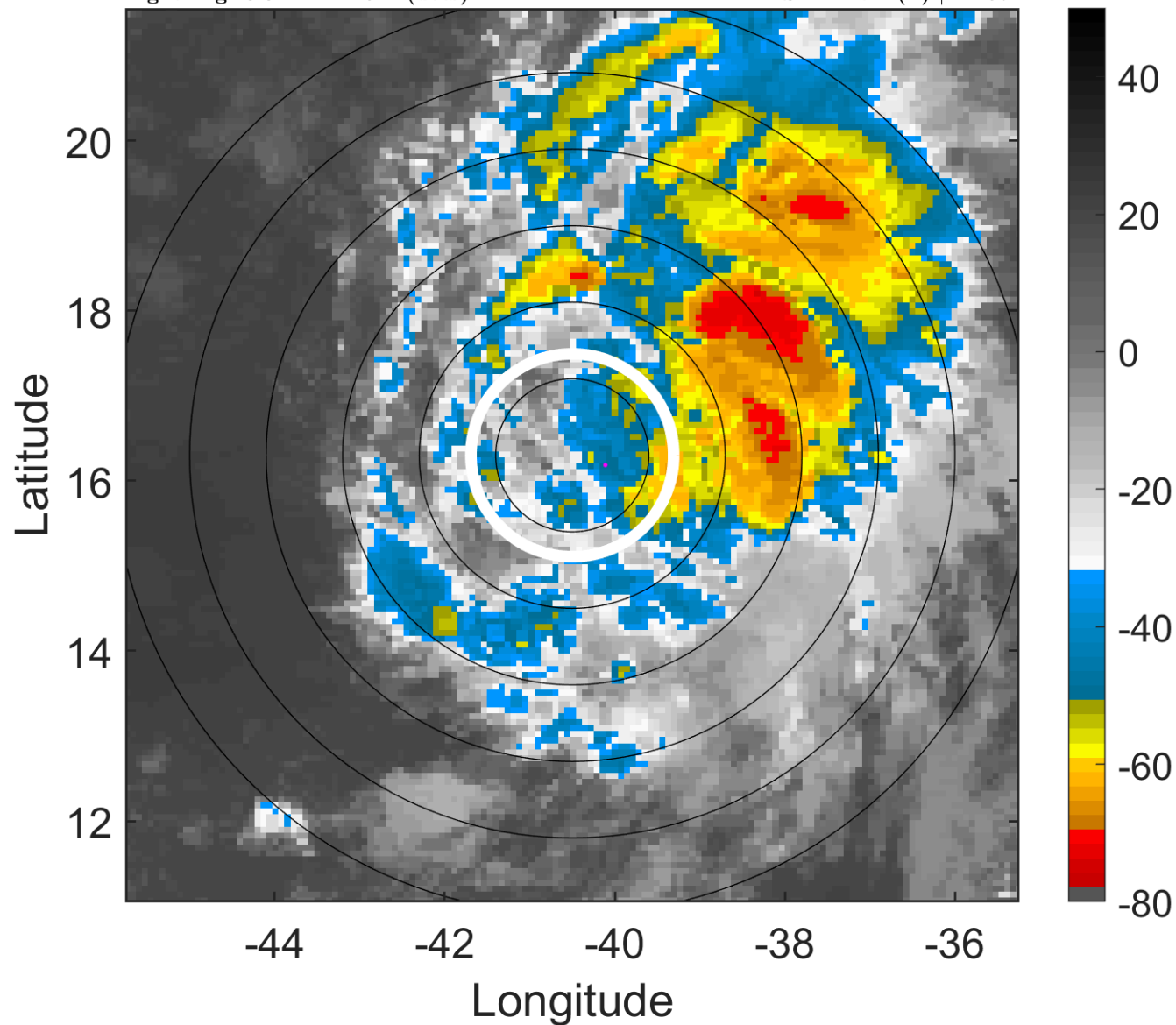
t: 2012100306 (3.3 LT)

Lightning: 3.3 LT \pm 1.5 h (dots)

PT: LLCP | EA: INACT

15L (OSCAR) | 30 kt TD

S: 2 m s⁻¹ (L) | H: 67°



6-h IR BT Differences & Lightning

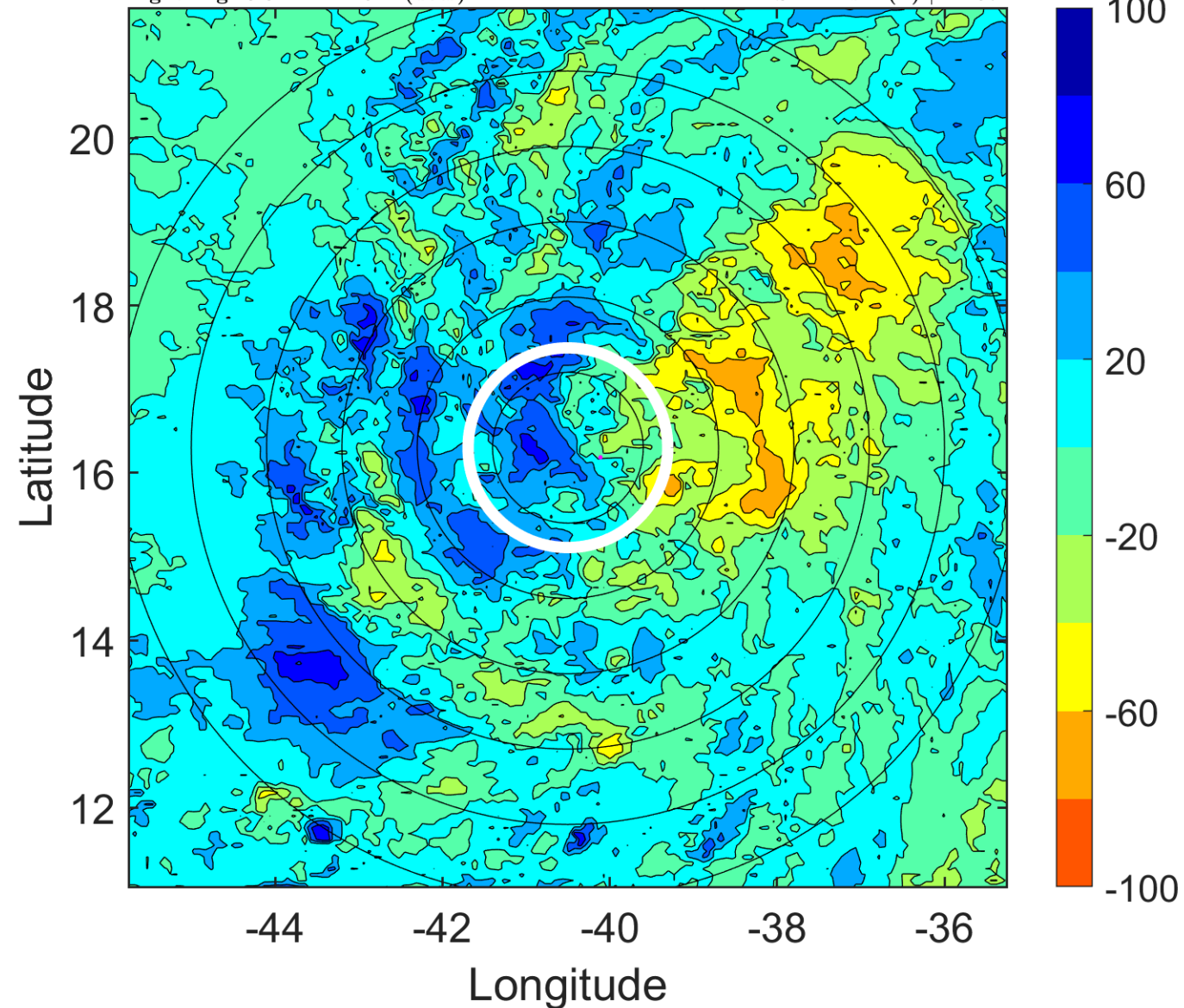
Δ t: 2012100306 (3.3 LT) - 2012100300 (21.4 LT)

Lightning: 3.3 LT \pm 1.5 h (dots)

PT: LLCP | EA: INACT

15L (OSCAR) | 30 kt TD

S: 2 m s⁻¹ (L) | H: 67°



IR BT & Lightning

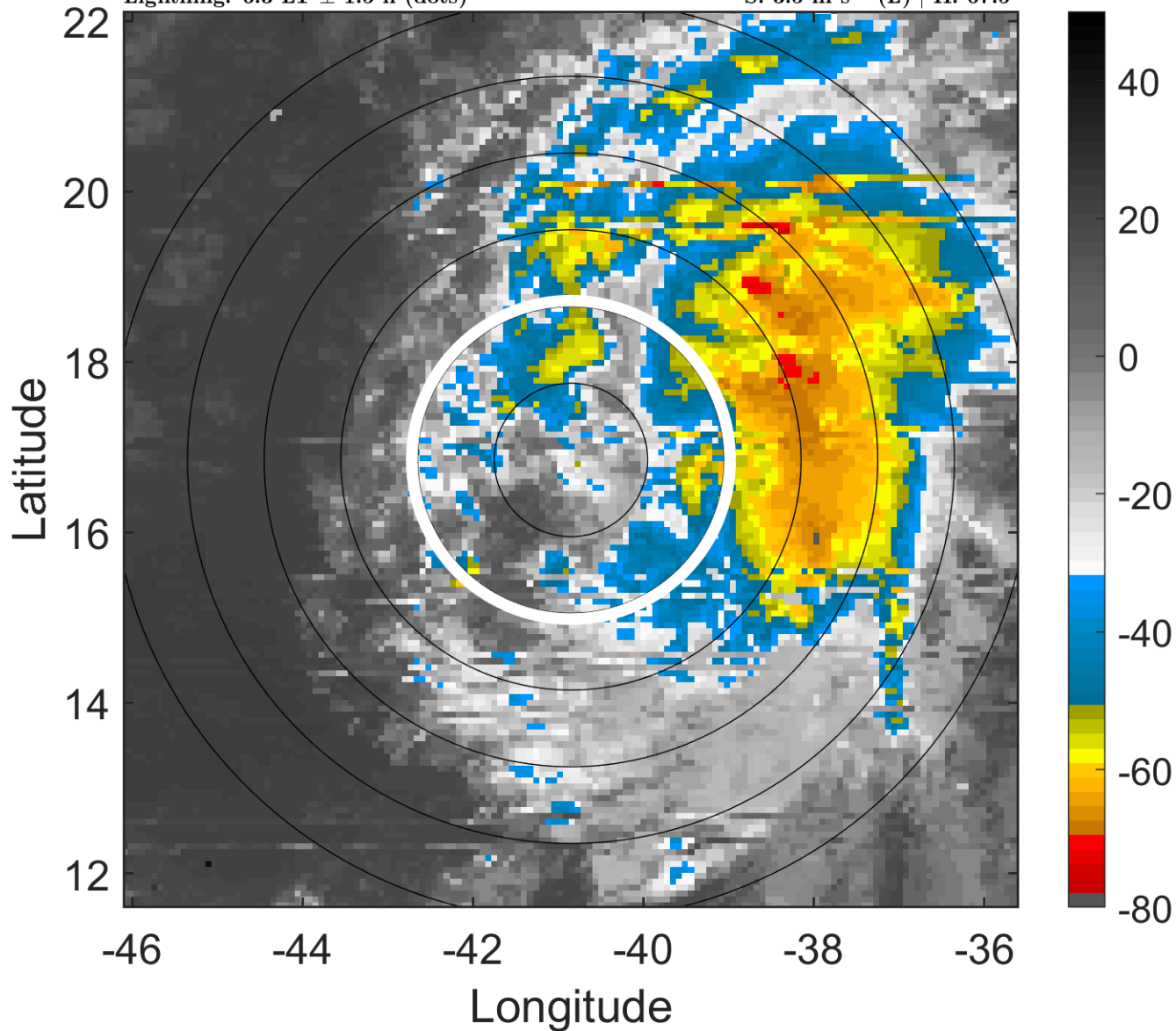
t: 2012100309 (6.3 LT)

Lightning: 6.3 LT \pm 1.5 h (dots)

PT: LLCP | EA: INACT

15L (OSCAR) | 30 kt TD

S: 3.5 m s⁻¹ (L) | H: 67.5°



6-h IR BT Differences & Lightning

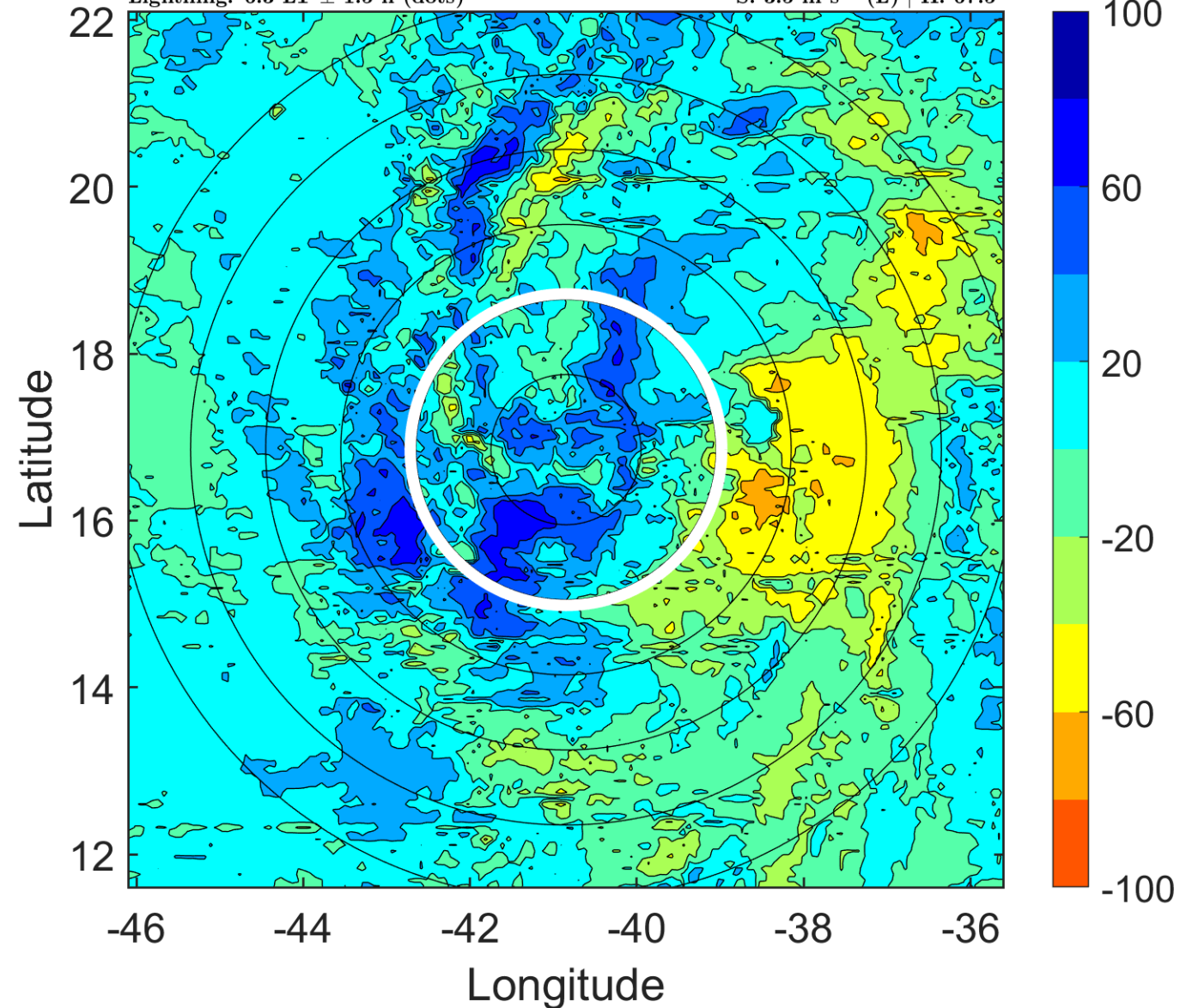
Δ t: 2012100309 (6.3 LT) - 2012100303 (0.3 LT)

Lightning: 6.3 LT \pm 1.5 h (dots)

PT: LLCP | EA: INACT

15L (OSCAR) | 30 kt TD

S: 3.5 m s⁻¹ (L) | H: 67.5°



IR BT & Lightning

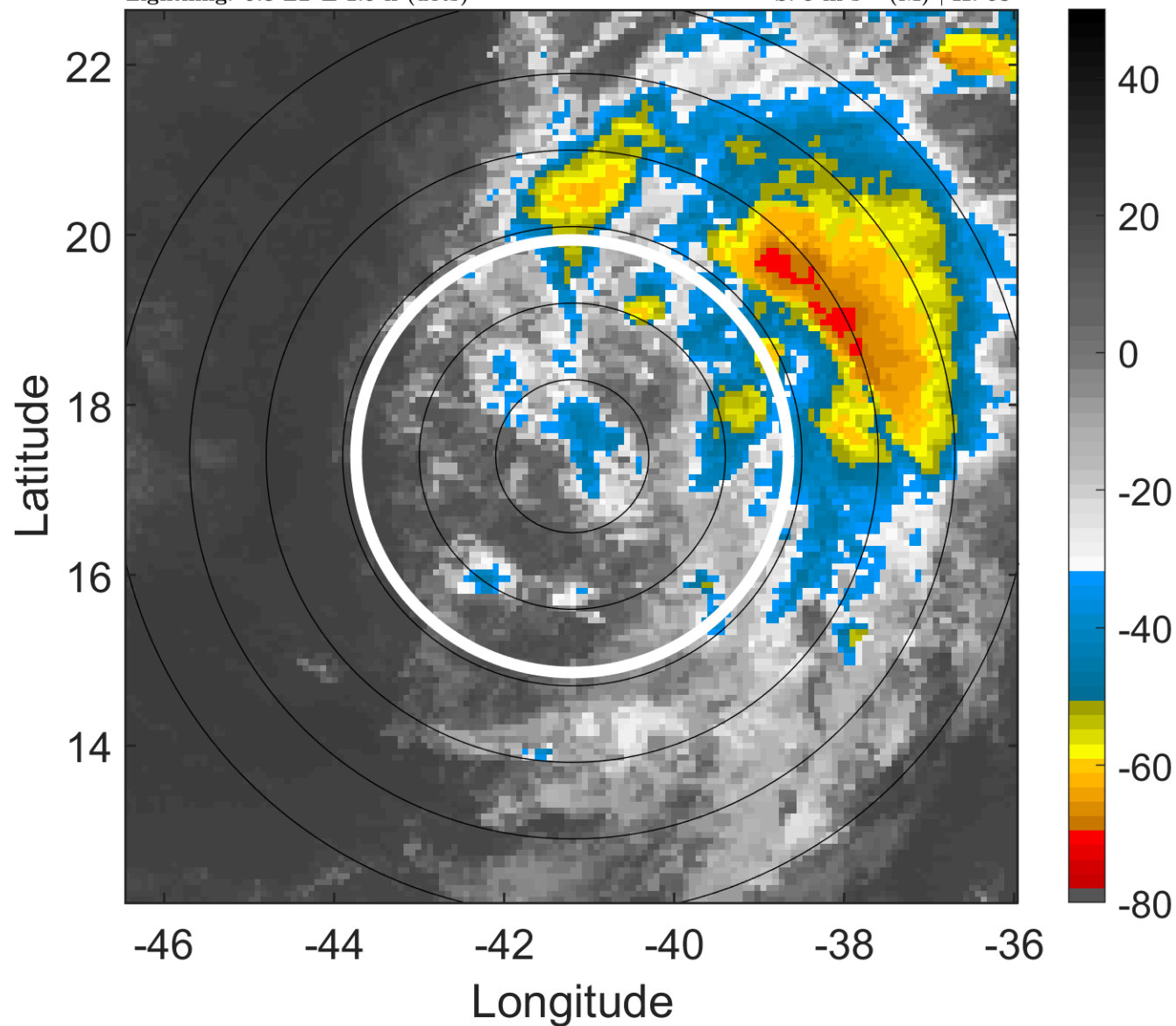
t: 2012100312 (9.3 LT)

Lightning: 9.3 LT \pm 1.5 h (dots)

PT: LLCP | EA: INACT

15L (OSCAR) | 30 kt TD

S: 5 m s⁻¹ (M) | H: 68°



6-h IR BT Differences & Lightning

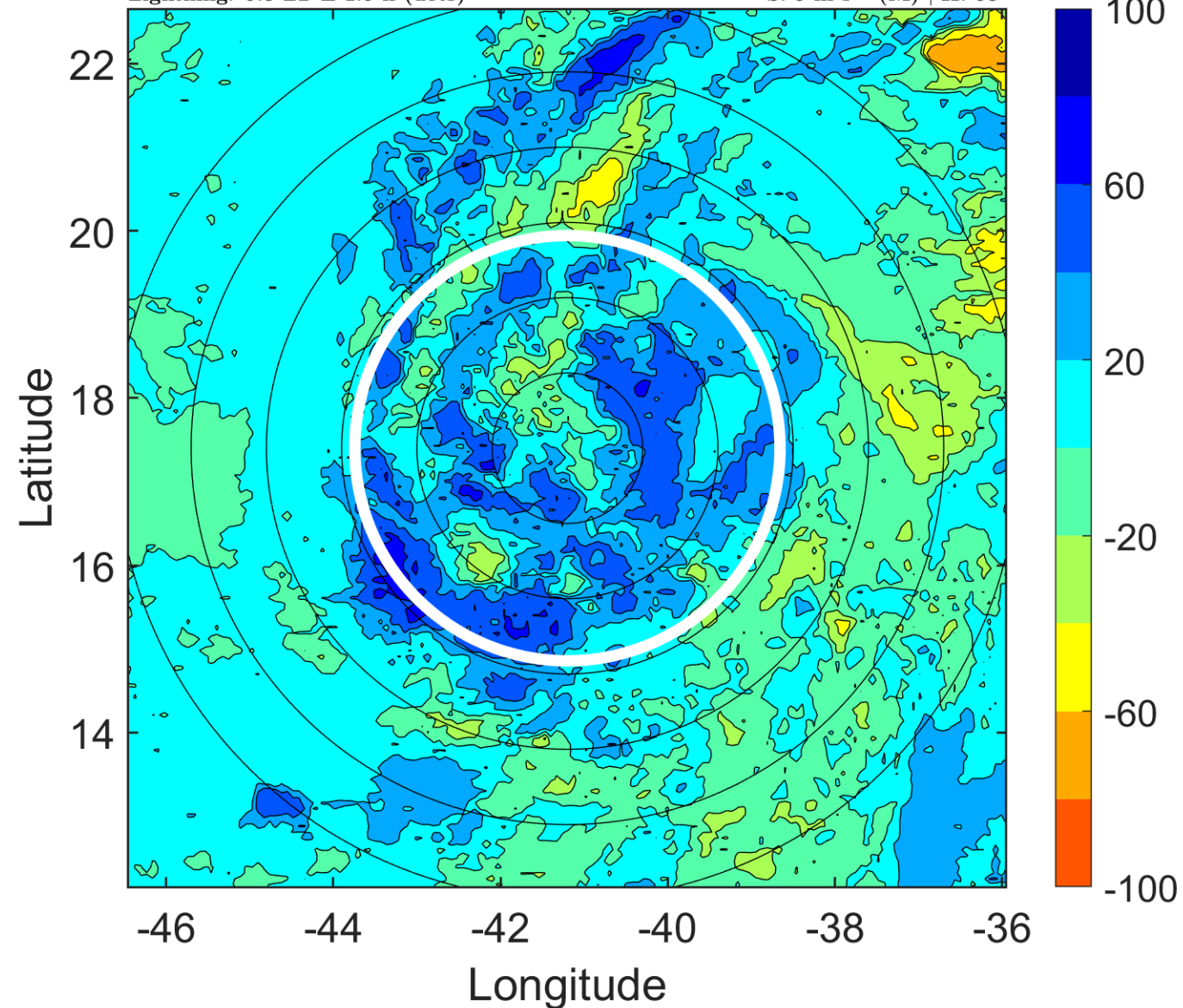
Δ t: 2012100312 (9.3 LT) - 2012100306 (3.3 LT)

Lightning: 9.3 LT \pm 1.5 h (dots)

PT: LLCP | EA: INACT

15L (OSCAR) | 30 kt TD

S: 5 m s⁻¹ (M) | H: 68°



IR BT & Lightning

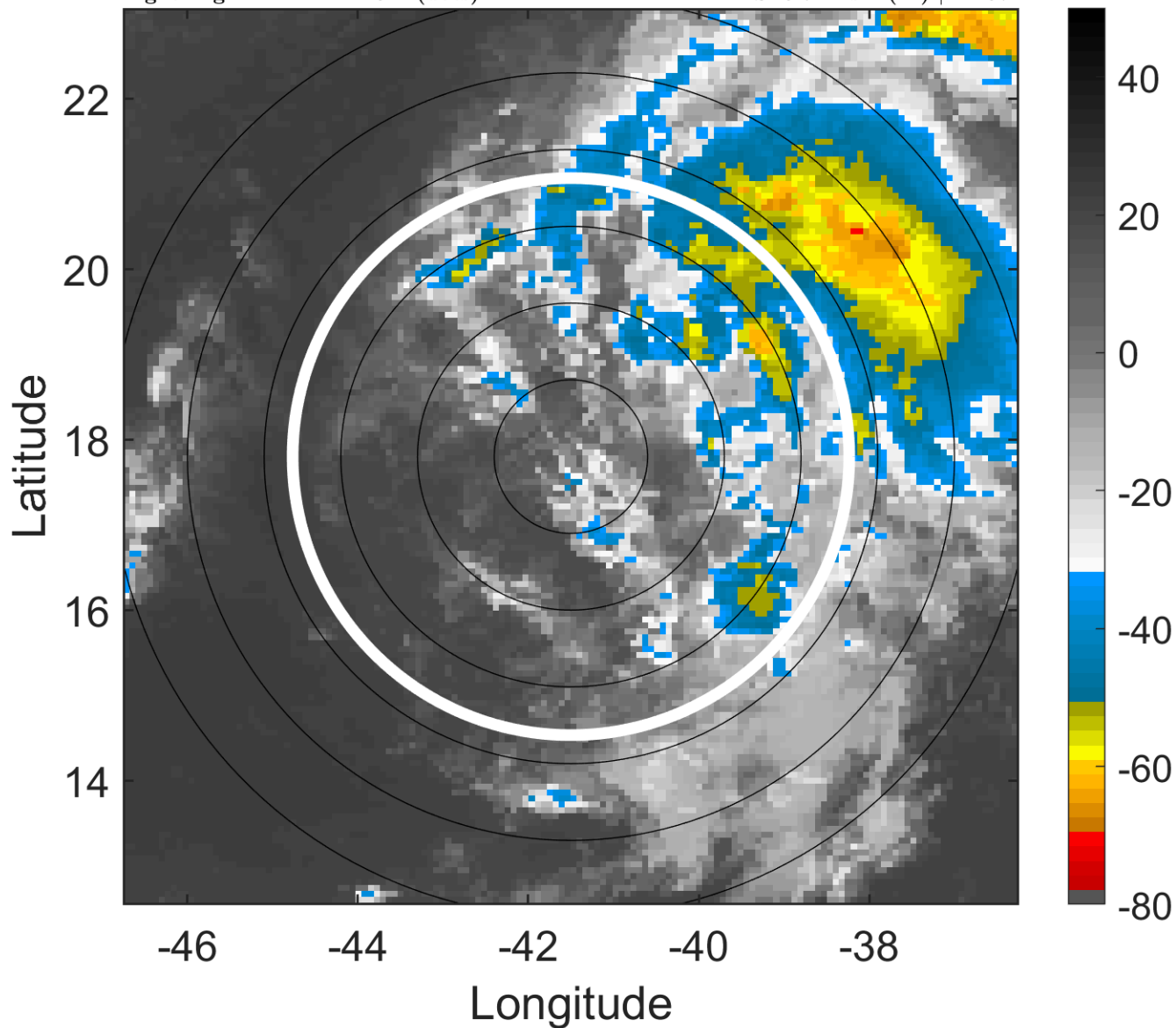
t: 2012100315 (12.2 LT)

Lightning: 12.2 LT \pm 1.5 h (dots)

PT: LLCP | EA: INACT

15L (OSCAR) | 32.5 kt TD

S: 5.7 m s⁻¹ (M) | H: 67°



6-h IR BT Differences & Lightning

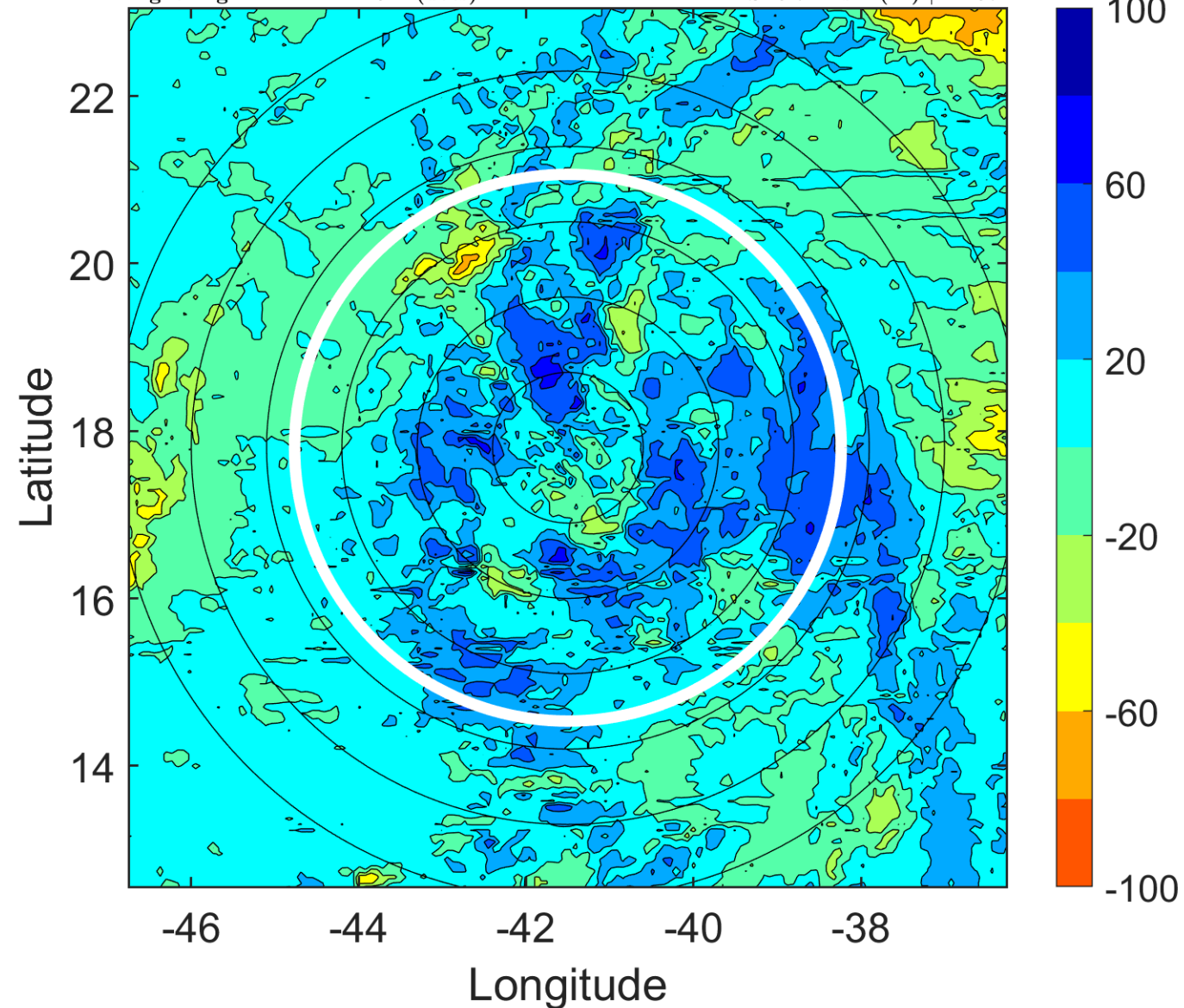
Δ t: 2012100315 (12.2 LT) - 2012100309 (6.3 LT)

Lightning: 12.2 LT \pm 1.5 h (dots)

PT: LLCP | EA: INACT

15L (OSCAR) | 32.5 kt TD

S: 5.7 m s⁻¹ (M) | H: 67°



IR BT & Lightning

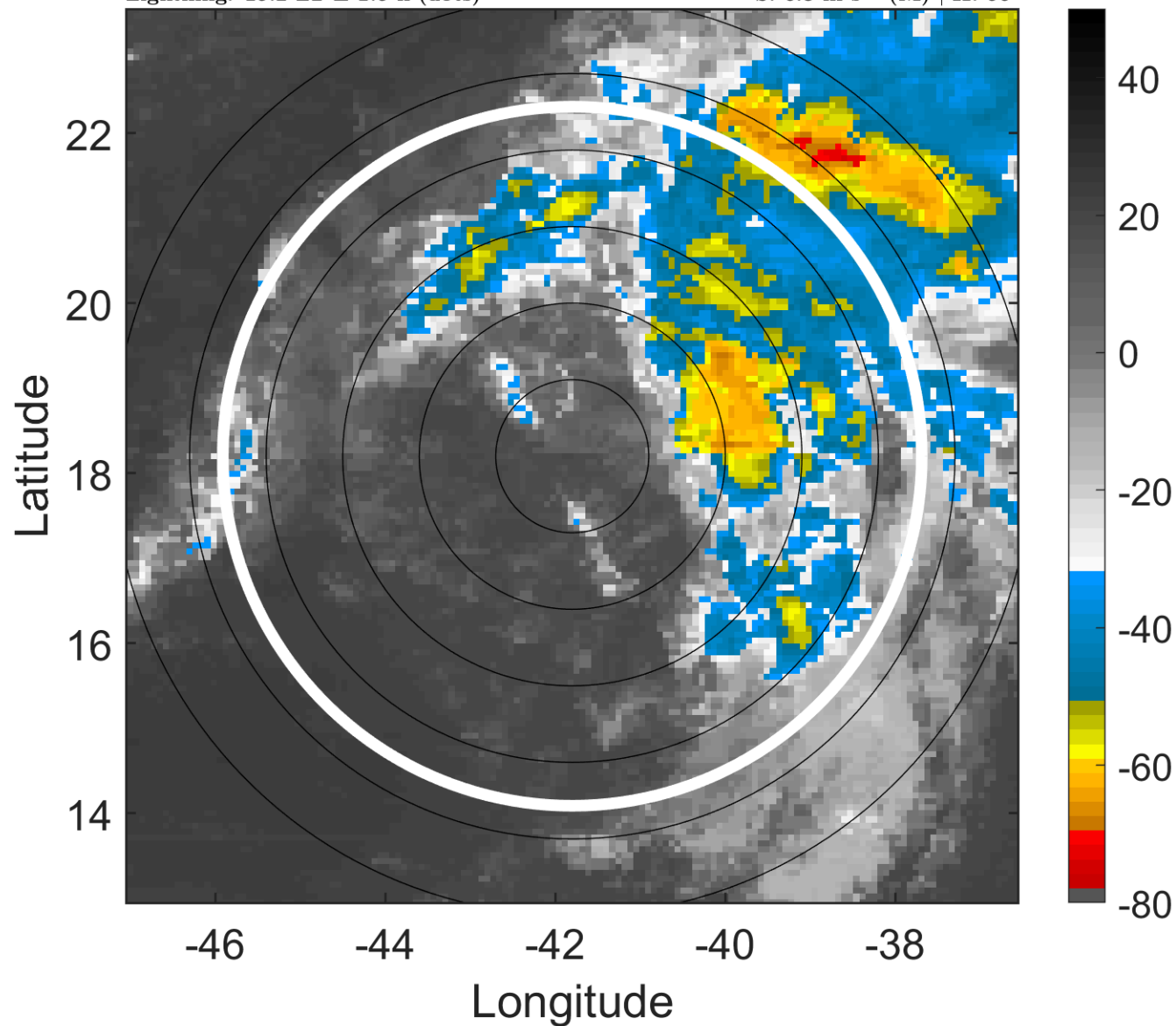
t: 2012100318 (15.2 LT)

Lightning: 15.2 LT \pm 1.5 h (dots)

PT: LLCP | EA: INACT

15L (OSCAR) | 35 kt TS

S: 6.3 m s⁻¹ (M) | H: 66°



6-h IR BT Differences & Lightning

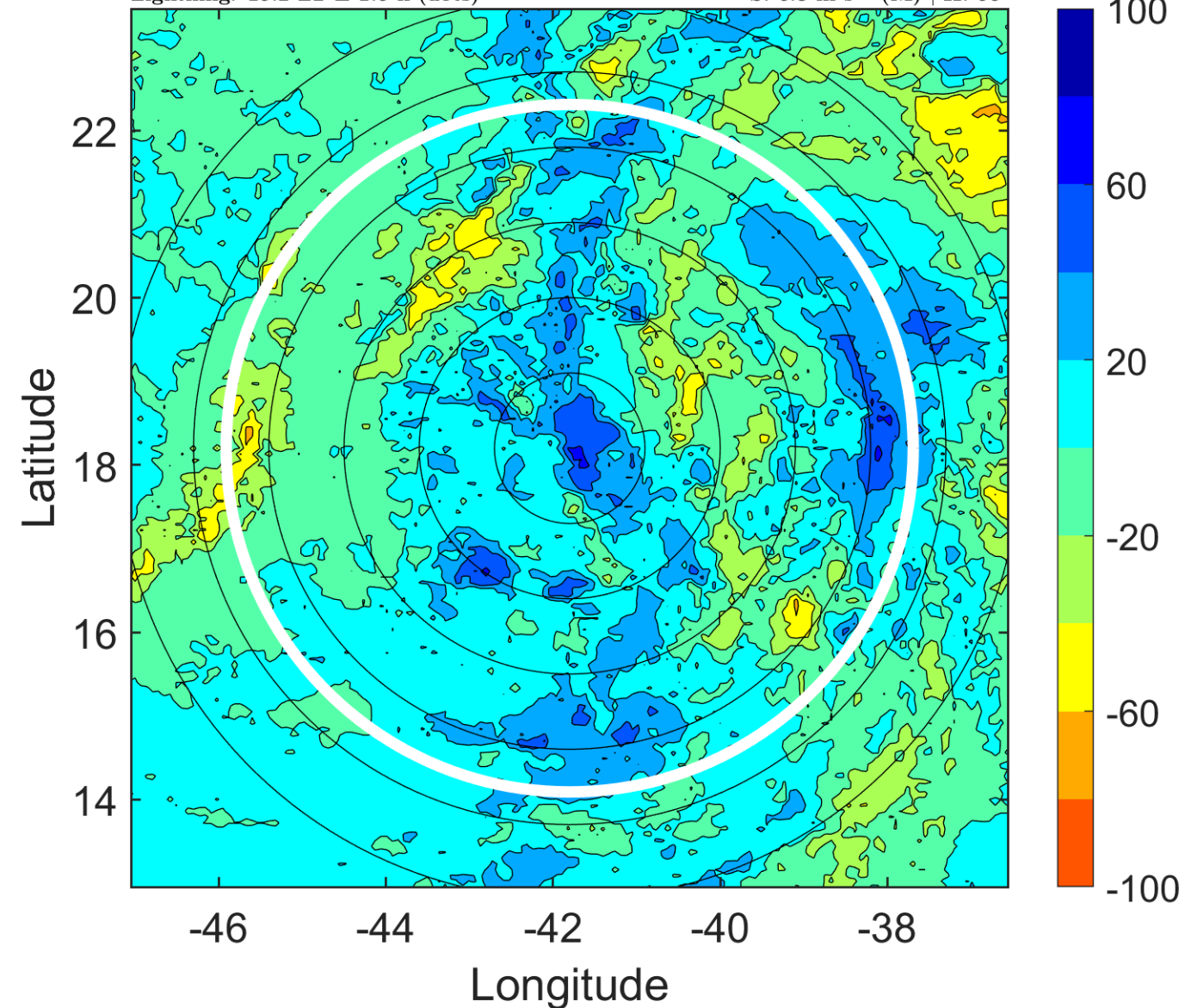
Δ t: 2012100318 (15.2 LT) - 2012100312 (9.3 LT)

Lightning: 15.2 LT \pm 1.5 h (dots)

PT: LLCP | EA: INACT

15L (OSCAR) | 35 kt TS

S: 6.3 m s⁻¹ (M) | H: 66°



IR BT & Lightning

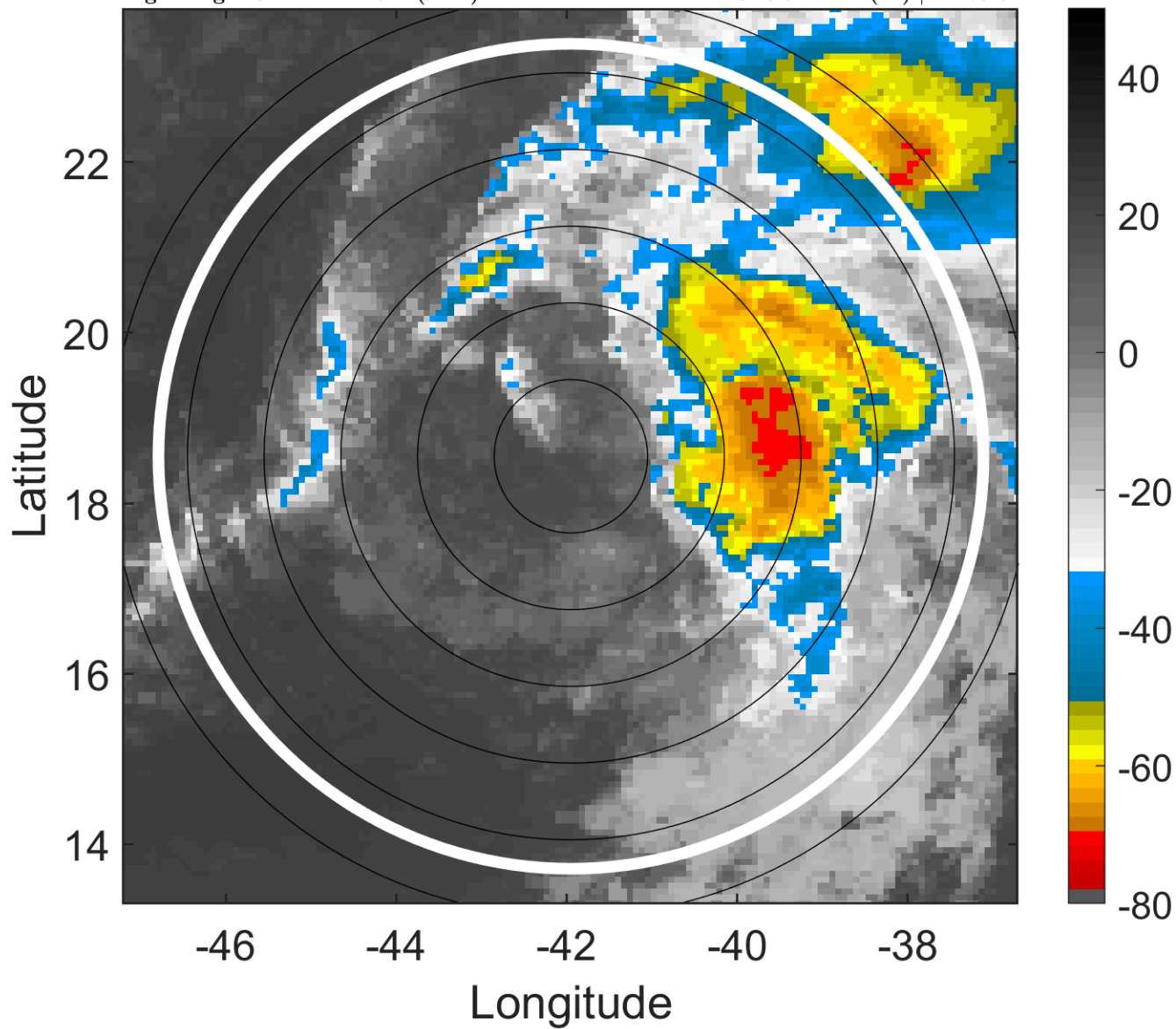
t: 2012100321 (18.2 LT)

Lightning: 18.2 LT \pm 1.5 h (dots)

PT: LLCP | EA: INACT

15L (OSCAR) | 37.5 kt TS

S: 6.9 m s⁻¹ (M) | H: 79.5°



6-h IR BT Differences & Lightning

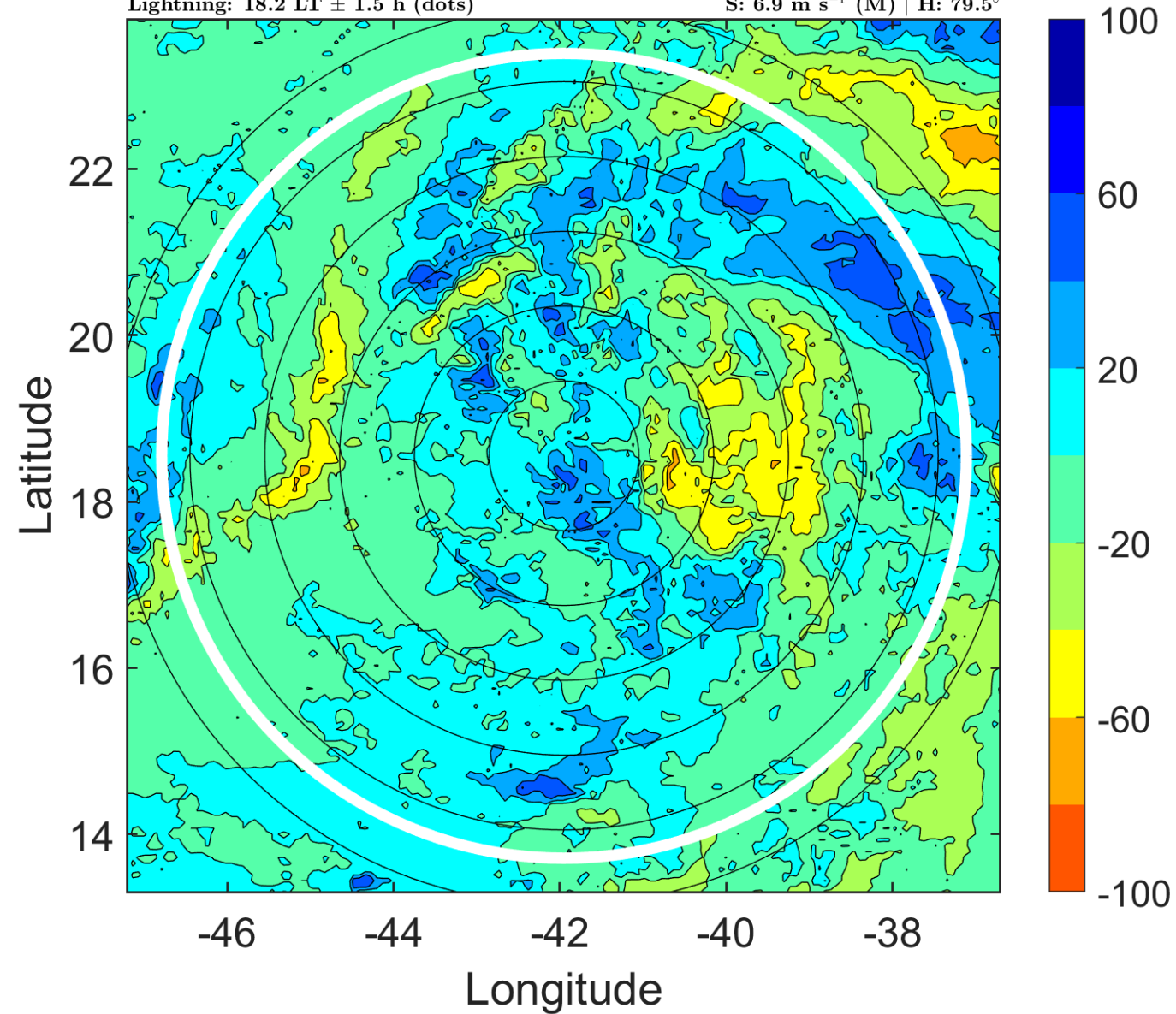
Δ t: 2012100321 (18.2 LT) - 2012100315 (12.2 LT)

Lightning: 18.2 LT \pm 1.5 h (dots)

PT: LLCP | EA: INACT

15L (OSCAR) | 37.5 kt TS

S: 6.9 m s⁻¹ (M) | H: 79.5°



IR BT & Lightning

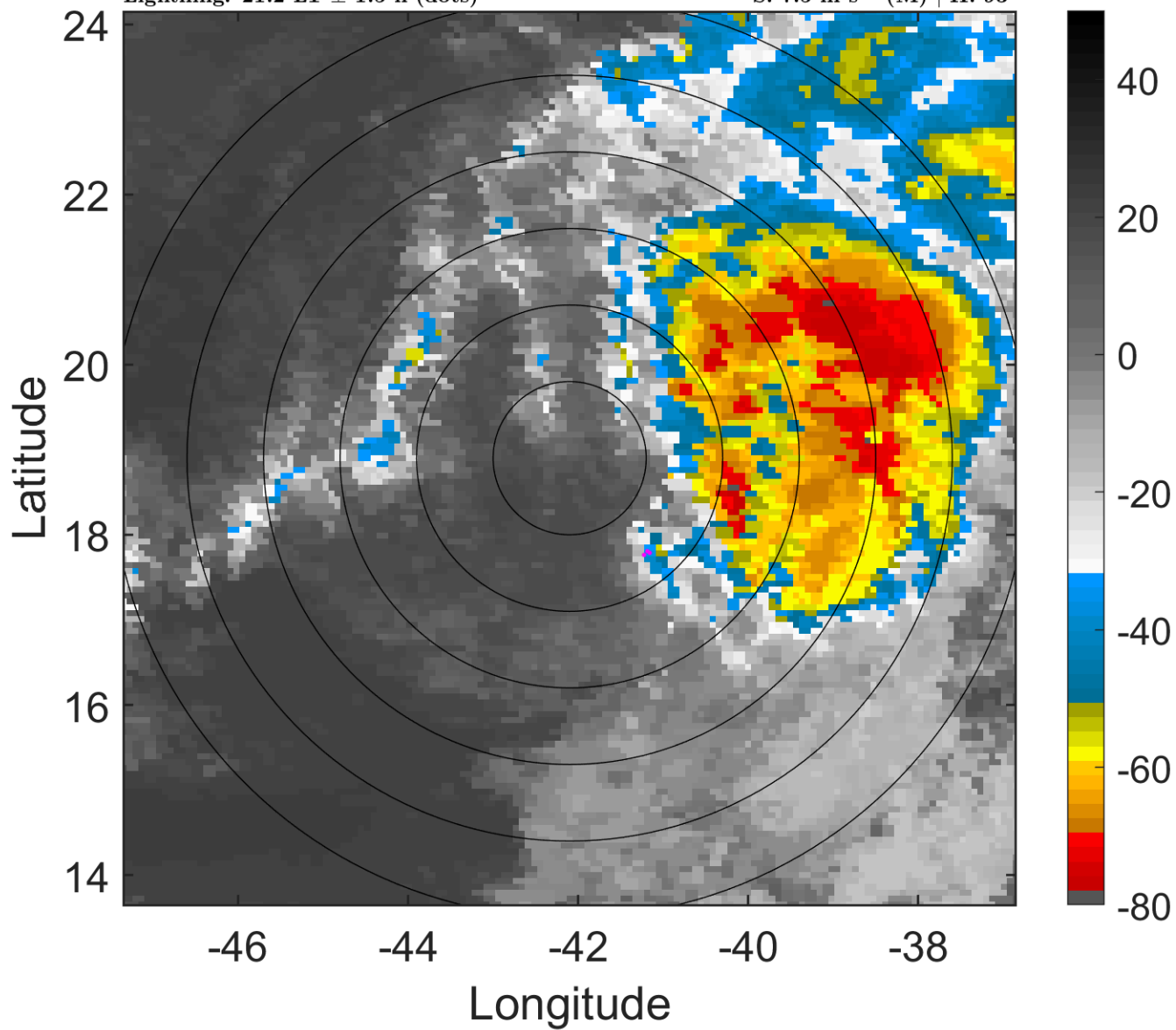
t: 2012100400 (21.2 LT)

Lightning: 21.2 LT \pm 1.5 h (dots)

PT: LLCP | EA: INACT

15L (OSCAR) | 40 kt TS

S: 7.5 m s⁻¹ (M) | H: 93°



6-h IR BT Differences & Lightning

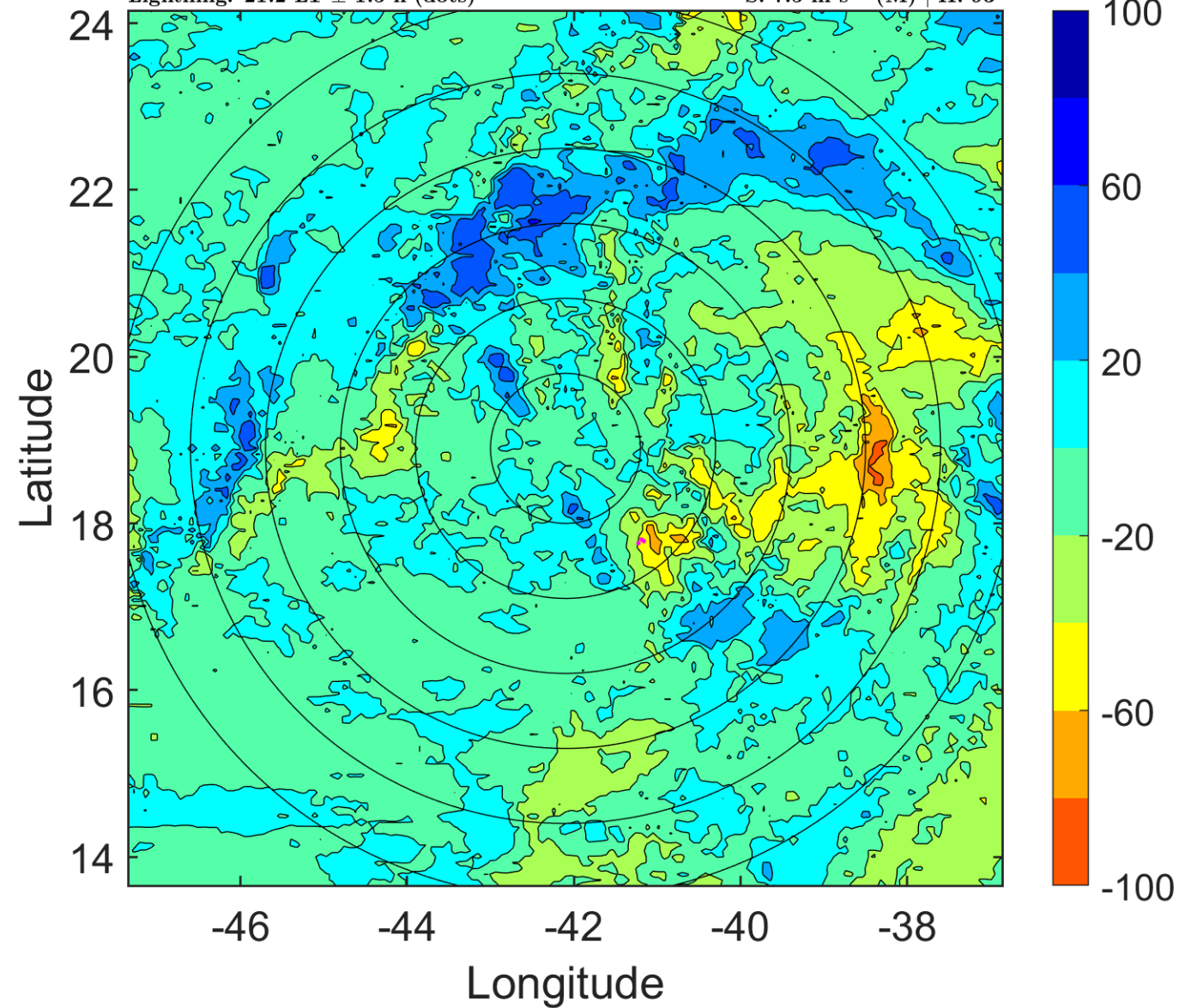
Δ t: 2012100400 (21.2 LT) - 2012100318 (15.2 LT)

Lightning: 21.2 LT \pm 1.5 h (dots)

PT: LLCP | EA: INACT

15L (OSCAR) | 40 kt TS

S: 7.5 m s⁻¹ (M) | H: 93°



IR BT & Lightning

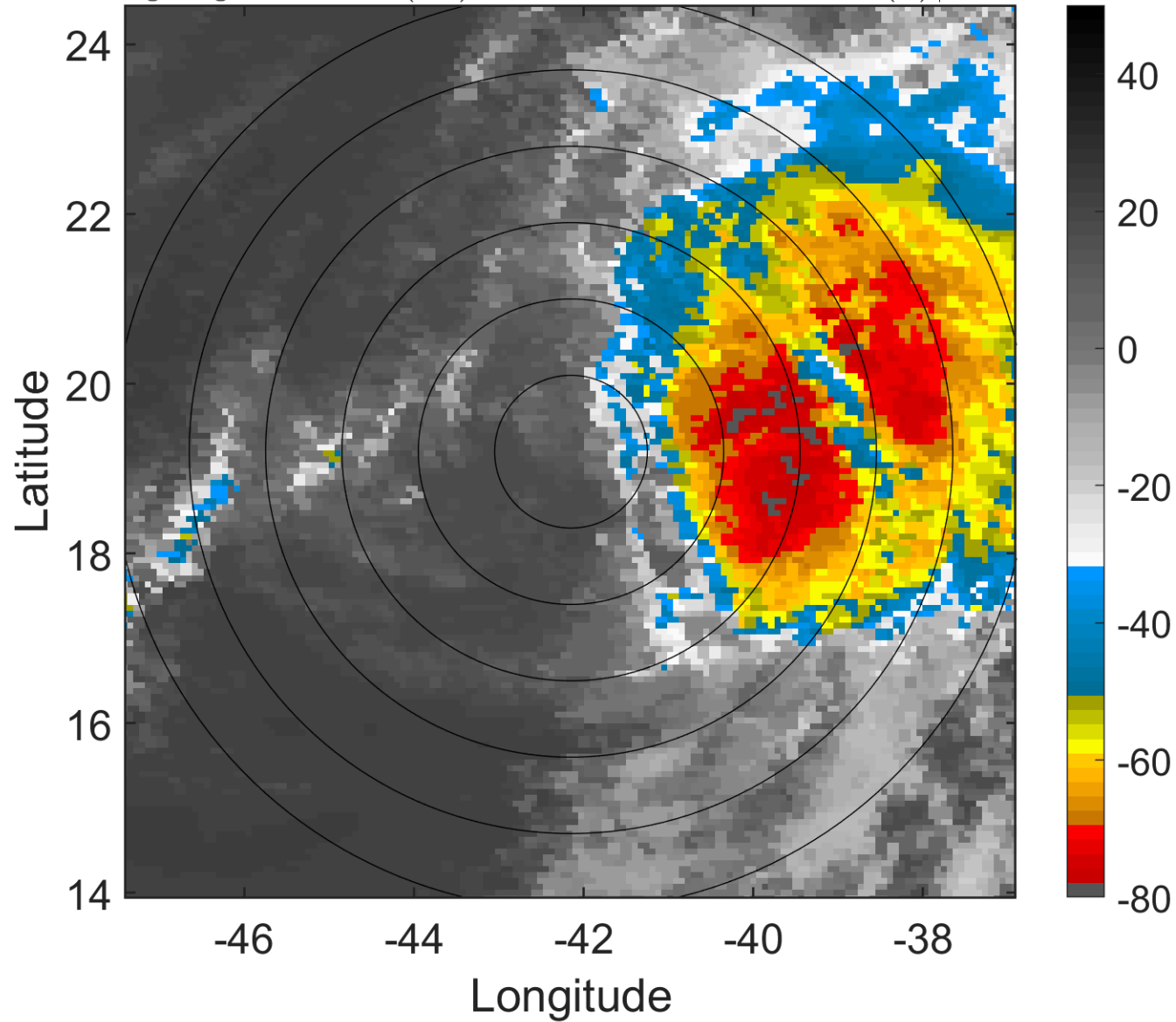
t: 2012100403 (0.2 LT)

Lightning: 0.2 LT \pm 1.5 h (dots)

PT: SLCP | EA: INACT

15L (OSCAR) | 40 kt TS

S: 7.3 m s⁻¹ (M) | H: 89°



6-h IR BT Differences & Lightning

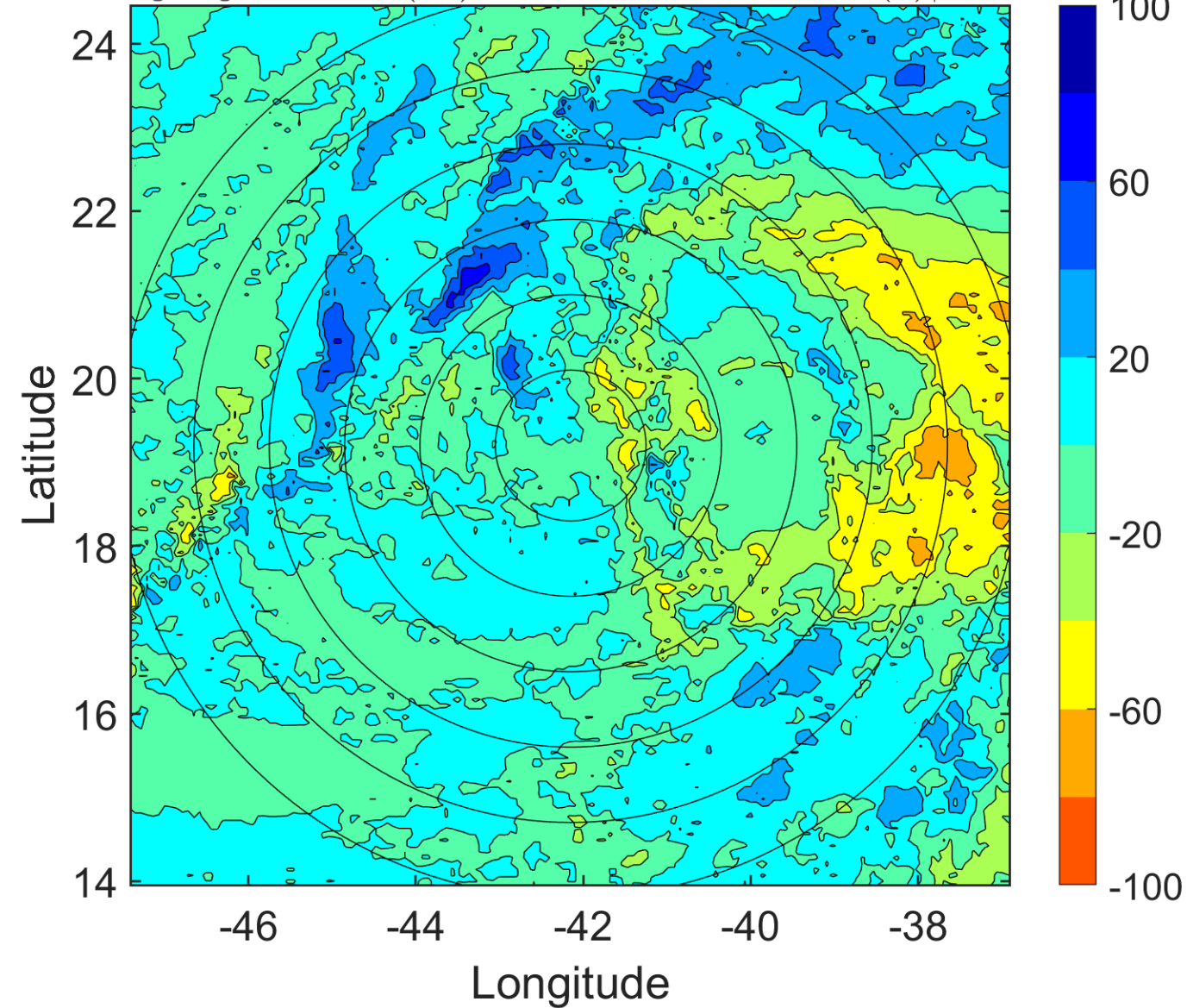
Δ t: 2012100403 (0.2 LT) - 2012100321 (18.2 LT)

Lightning: 0.2 LT \pm 1.5 h (dots)

PT: SLCP | EA: INACT

15L (OSCAR) | 40 kt TS

S: 7.3 m s⁻¹ (M) | H: 89°



IR BT & Lightning

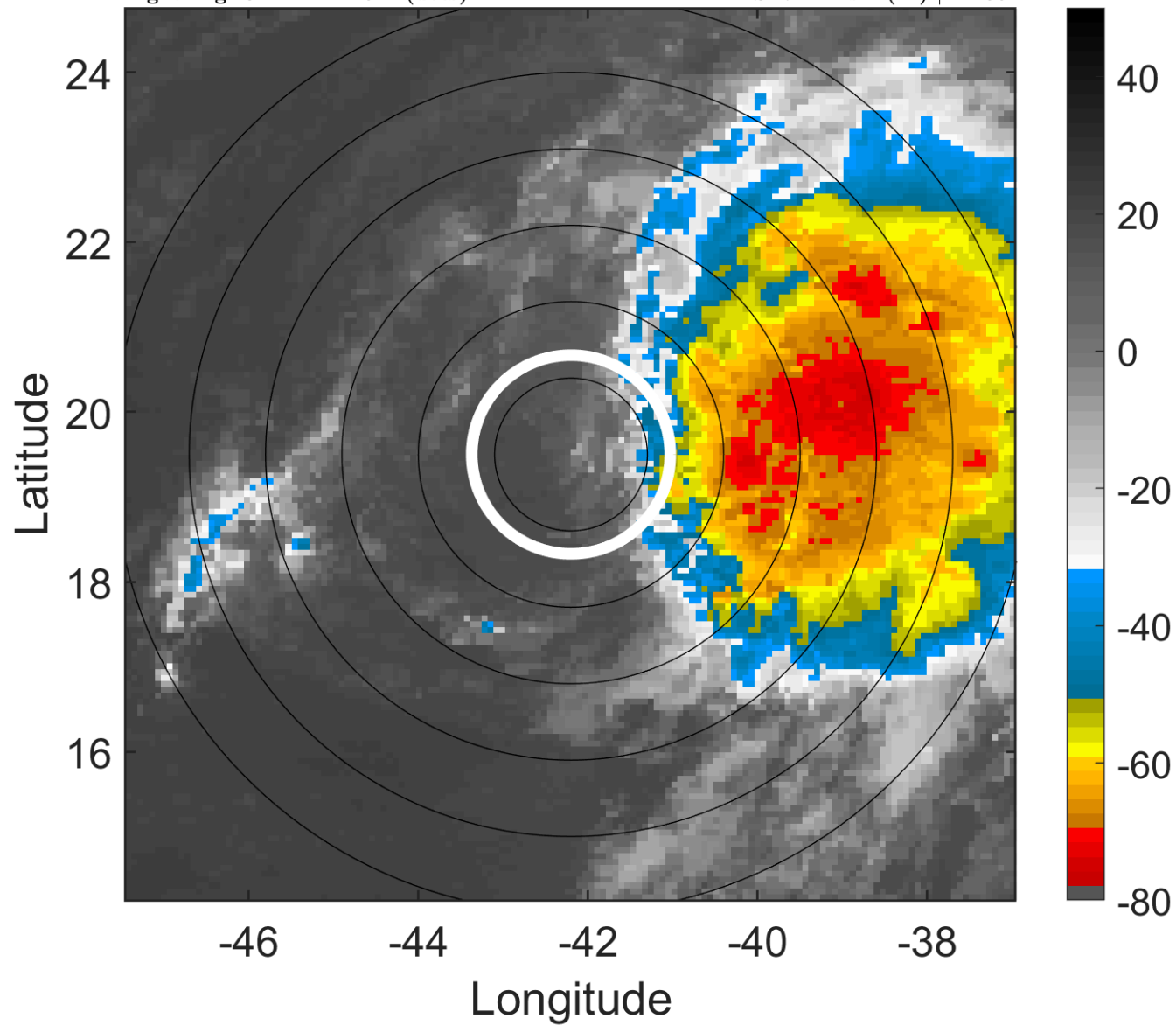
t: 2012100406 (3.2 LT)

Lightning: 3.2 LT \pm 1.5 h (dots)

PT: SLCP | EA: INACT

15L (OSCAR) | 40 kt TS

S: 7.2 m s⁻¹ (M) | H: 85°



6-h IR BT Differences & Lightning

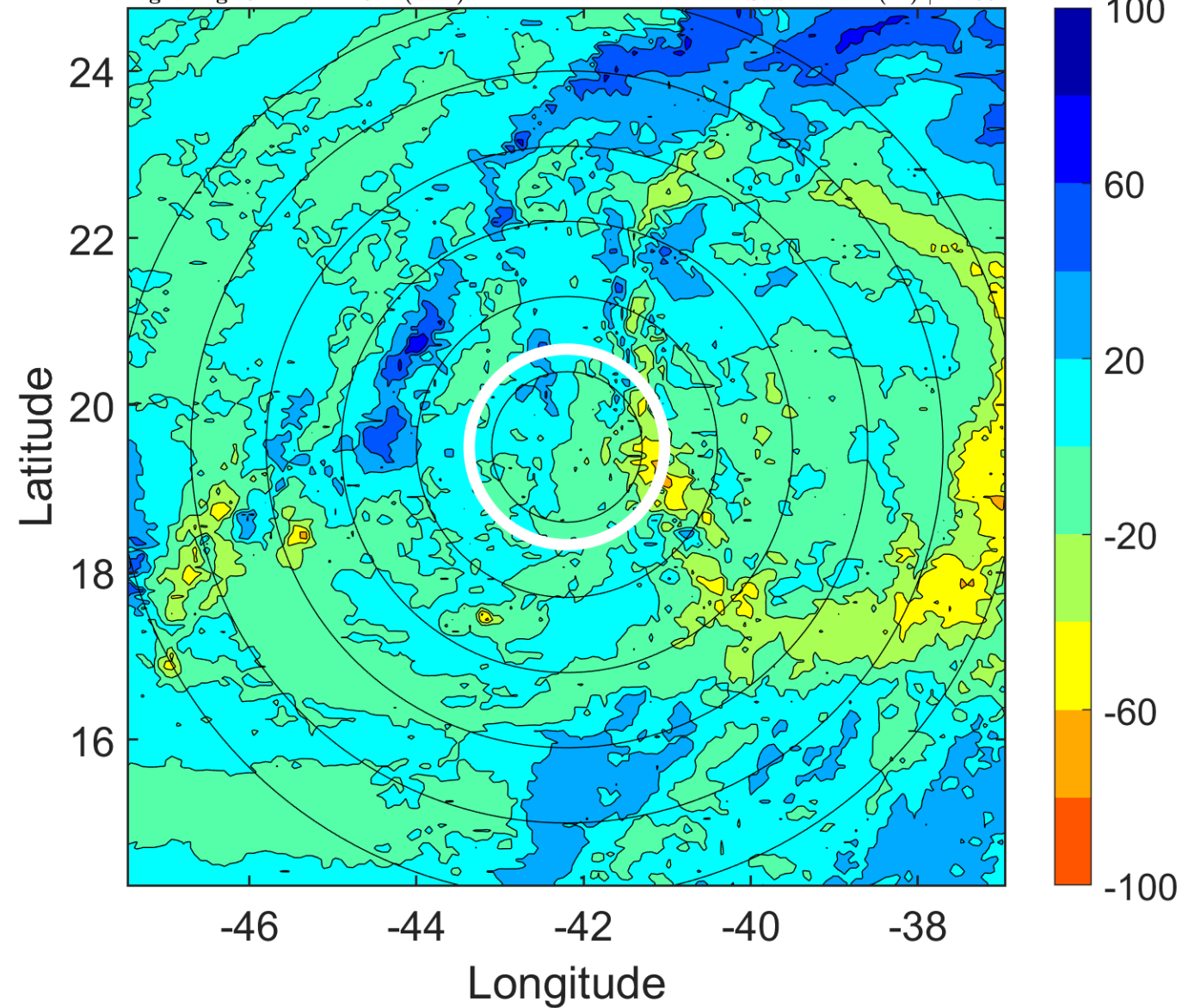
Δ t: 2012100406 (3.2 LT) - 2012100400 (21.2 LT)

Lightning: 3.2 LT \pm 1.5 h (dots)

PT: SLCP | EA: INACT

15L (OSCAR) | 40 kt TS

S: 7.2 m s⁻¹ (M) | H: 85°



IR BT & Lightning

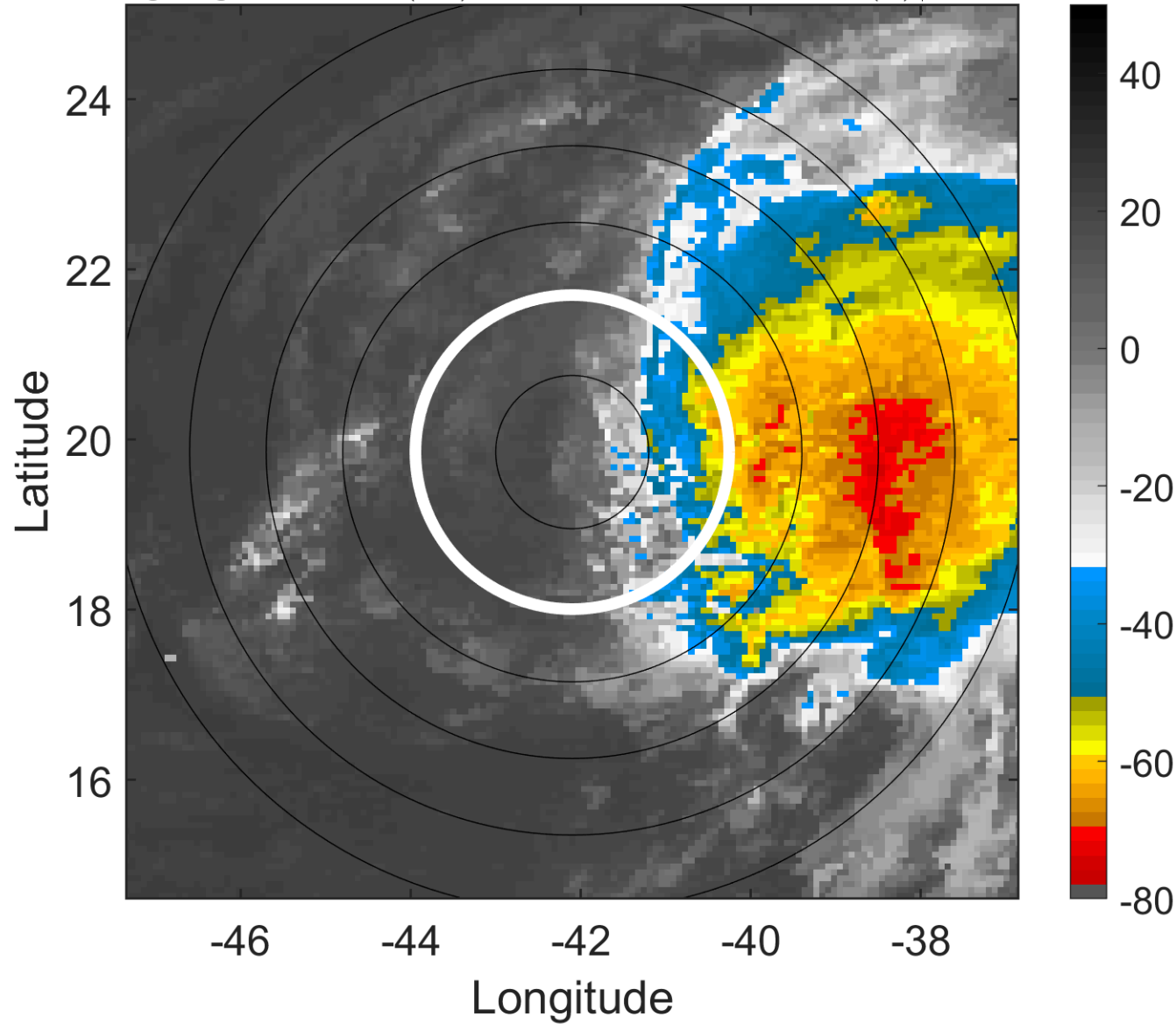
t: 2012100409 (6.2 LT)

Lightning: 6.2 LT \pm 1.5 h (dots)

PT: SLCP | EA: INACT

15L (OSCAR) | 42.5 kt TS

S: 9.2 m s⁻¹ (M) | H: 87.5°



6-h IR BT Differences & Lightning

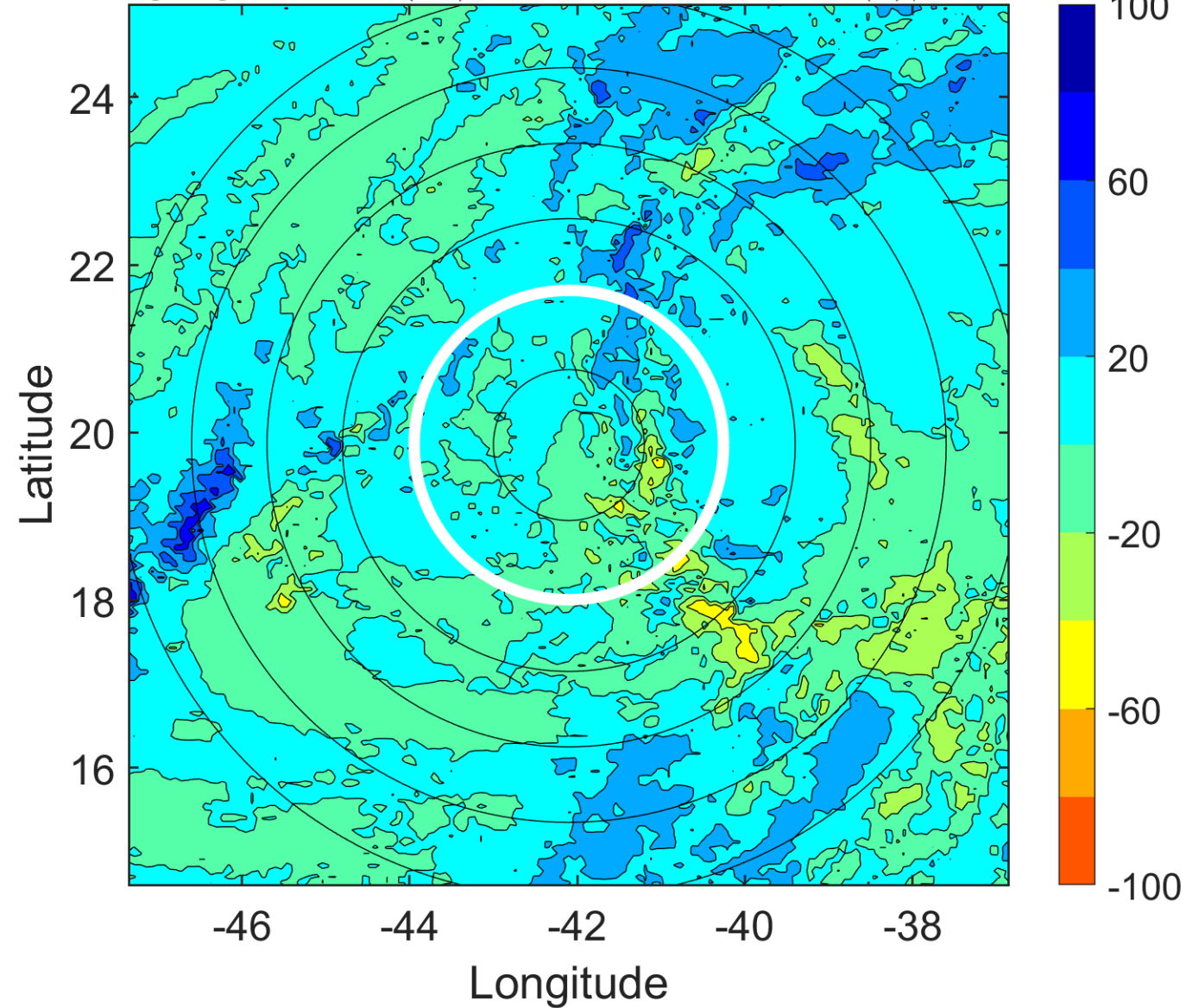
Δ t: 2012100409 (6.2 LT) - 2012100403 (0.2 LT)

Lightning: 6.2 LT \pm 1.5 h (dots)

PT: SLCP | EA: INACT

15L (OSCAR) | 42.5 kt TS

S: 9.2 m s⁻¹ (M) | H: 87.5°



IR BT & Lightning

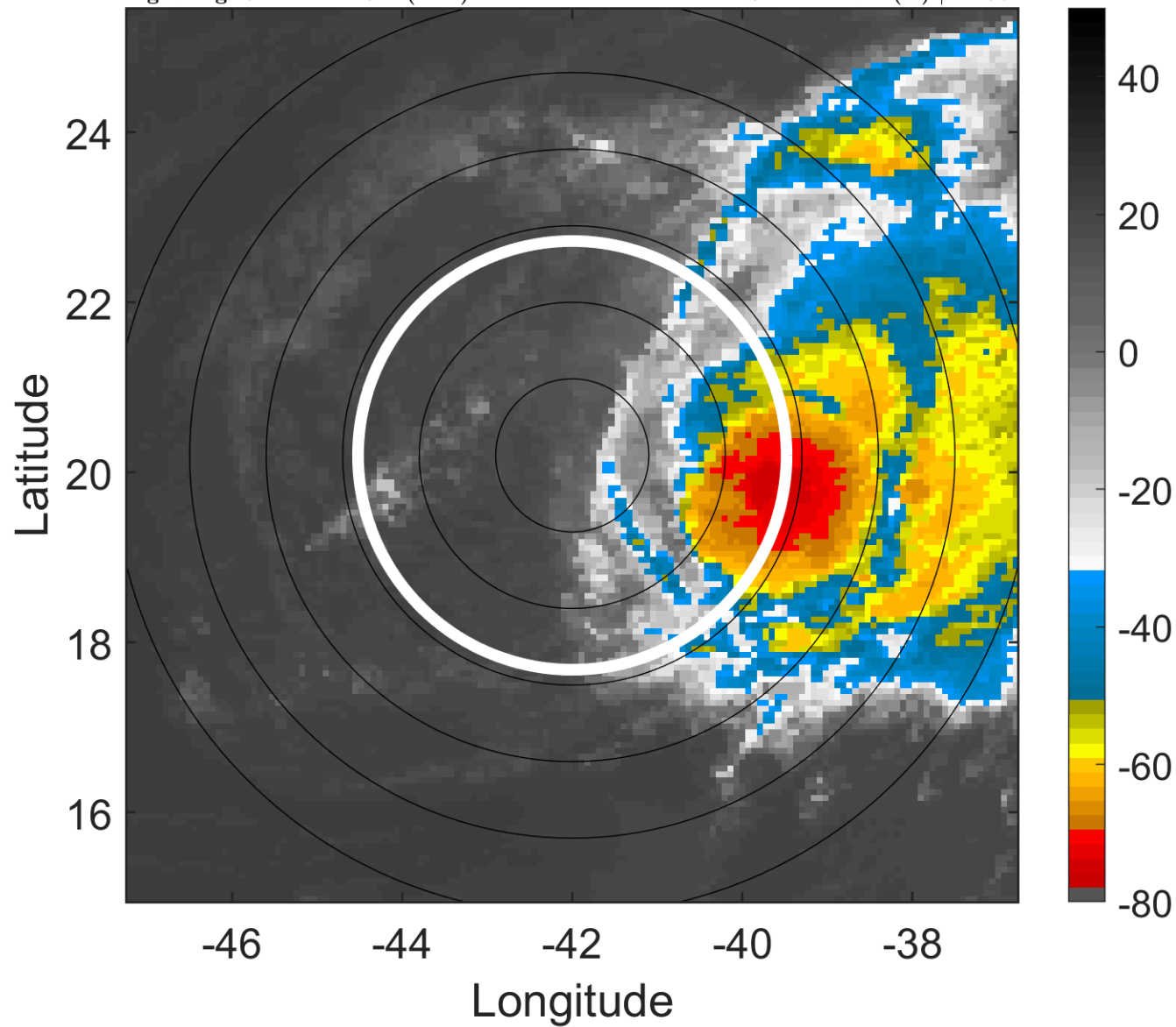
t: 2012100412 (9.2 LT)

Lightning: 9.2 LT \pm 1.5 h (dots)

PT: SLCP | EA: INACT

15L (OSCAR) | 45 kt TS

S: 11.2 m s⁻¹ (H) | H: 90°



6-h IR BT Differences & Lightning

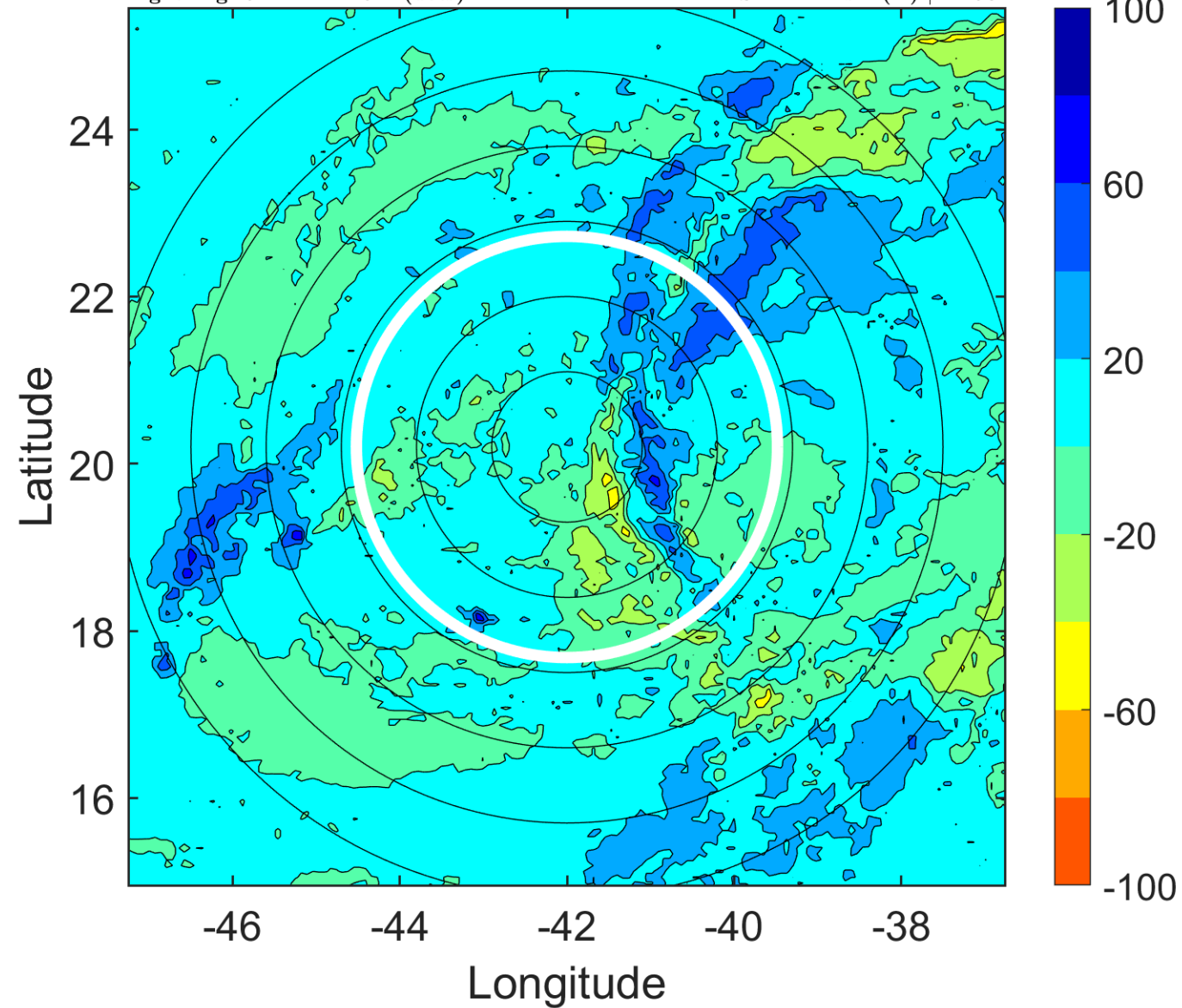
Δ t: 2012100412 (9.2 LT) - 2012100406 (3.2 LT)

Lightning: 9.2 LT \pm 1.5 h (dots)

PT: SLCP | EA: INACT

15L (OSCAR) | 45 kt TS

S: 11.2 m s⁻¹ (H) | H: 90°



IR BT & Lightning

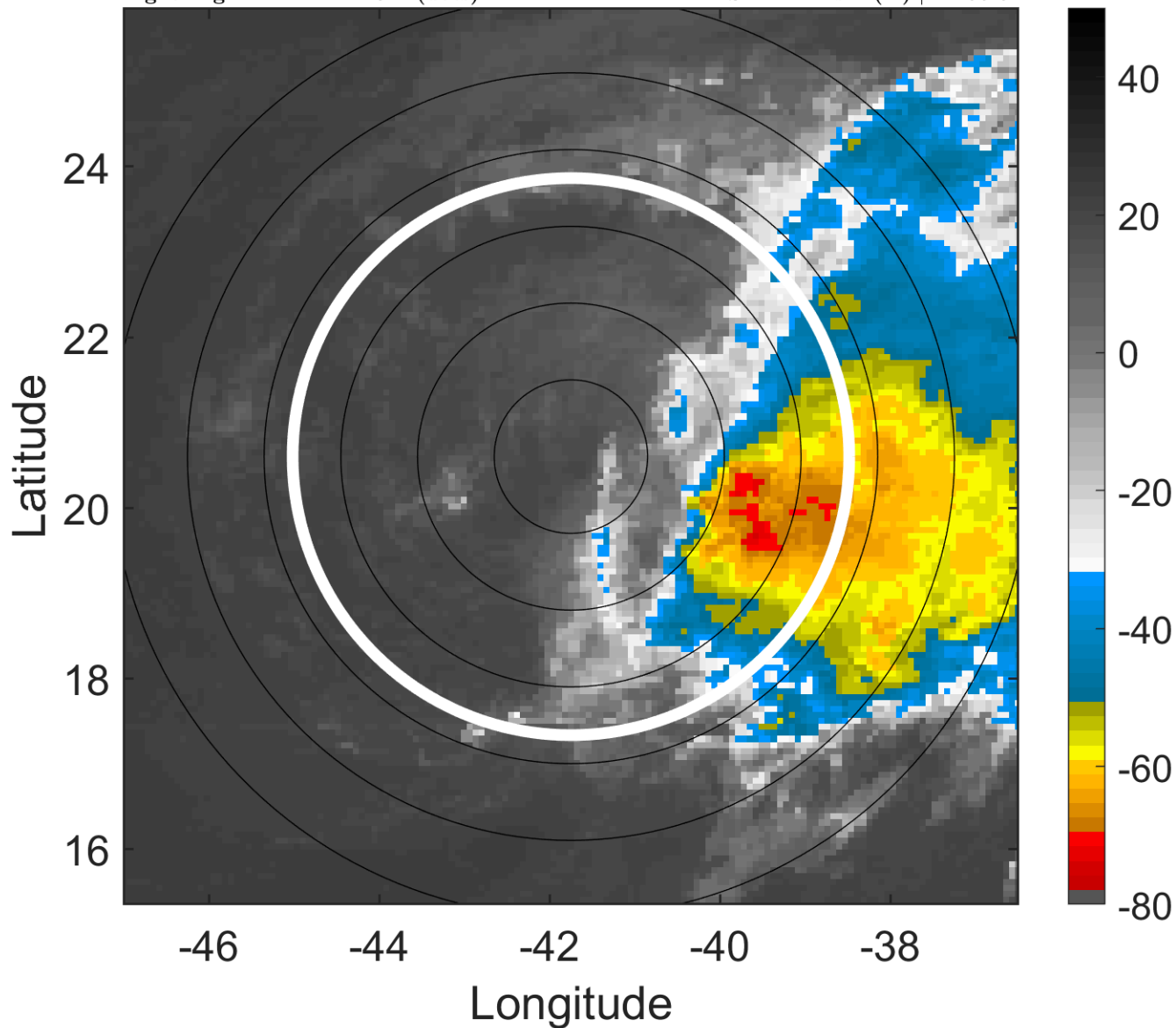
t: 2012100415 (12.2 LT)

Lightning: 12.2 LT \pm 1.5 h (dots)

PT: SLCP | EA: INACT

15L (OSCAR) | 45 kt TS

S: 12.2 m s⁻¹ (H) | H: 95.5°



6-h IR BT Differences & Lightning

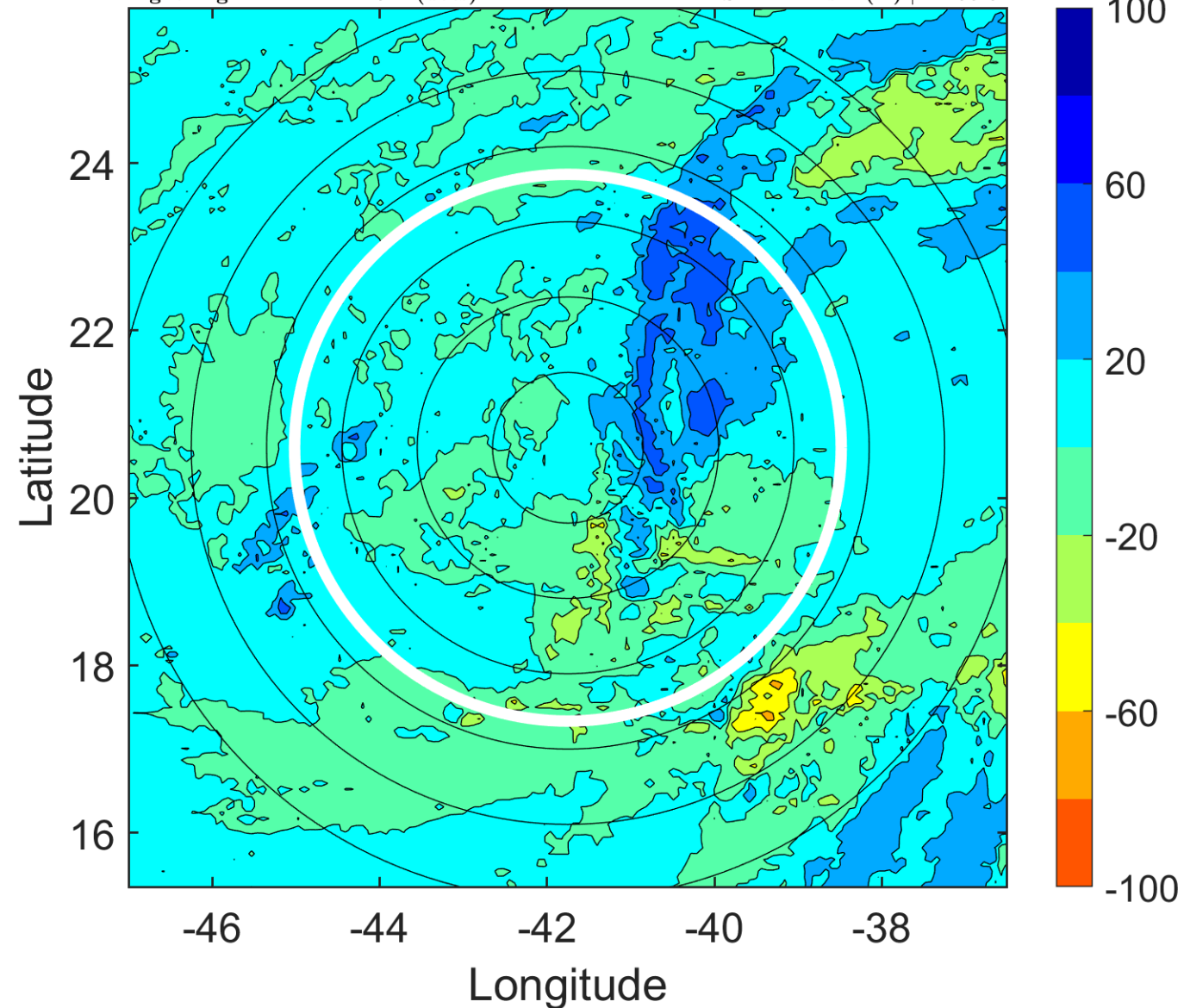
Δ t: 2012100415 (12.2 LT) - 2012100409 (6.2 LT)

Lightning: 12.2 LT \pm 1.5 h (dots)

PT: SLCP | EA: INACT

15L (OSCAR) | 45 kt TS

S: 12.2 m s⁻¹ (H) | H: 95.5°



IR BT & Lightning

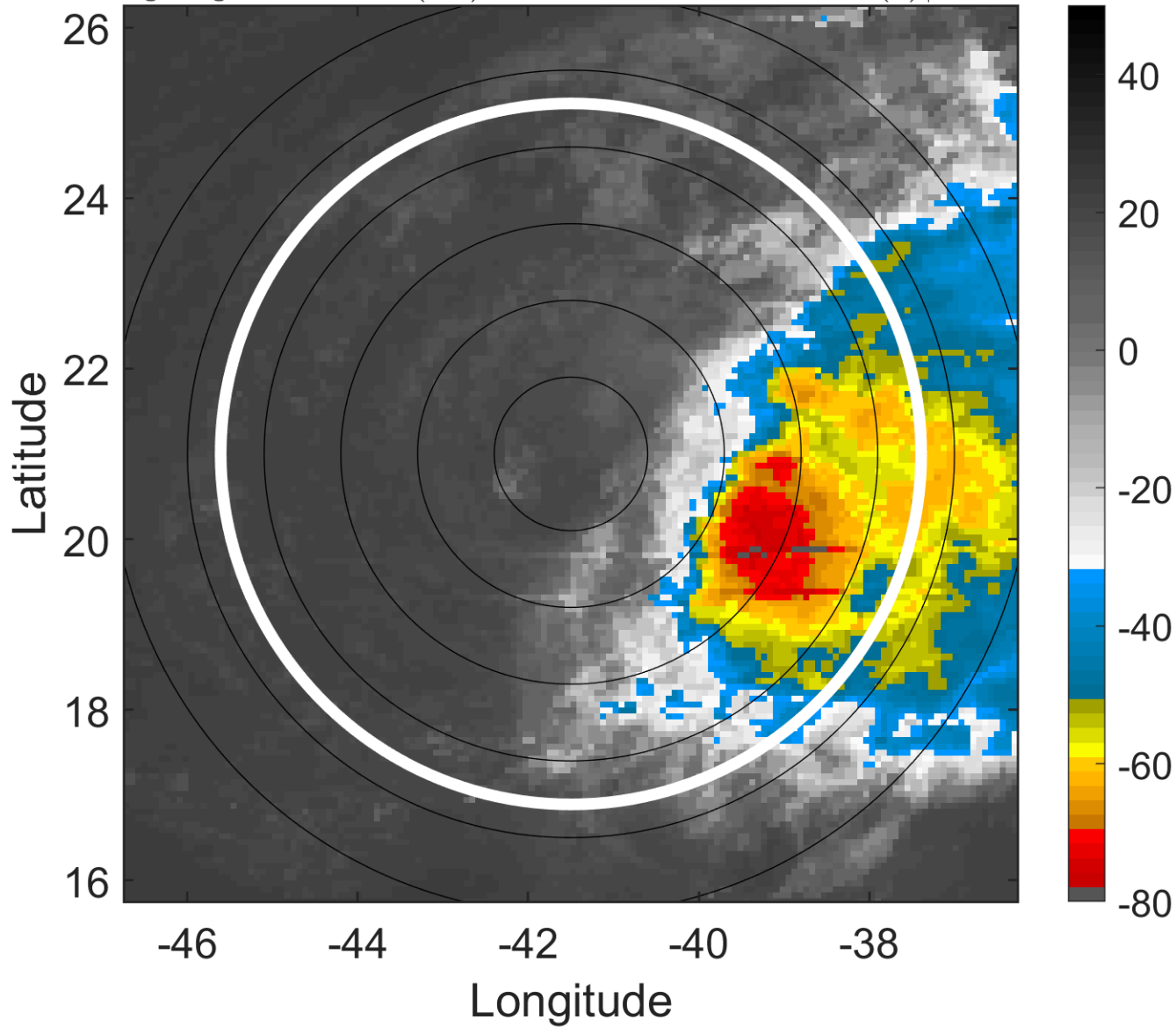
t: 2012100418 (15.2 LT)

Lightning: 15.2 LT \pm 1.5 h (dots)

PT: SLCP | EA: INACT

15L (OSCAR) | 45 kt TS

S: 13.2 m s⁻¹ (H) | H: 101°



6-h IR BT Differences & Lightning

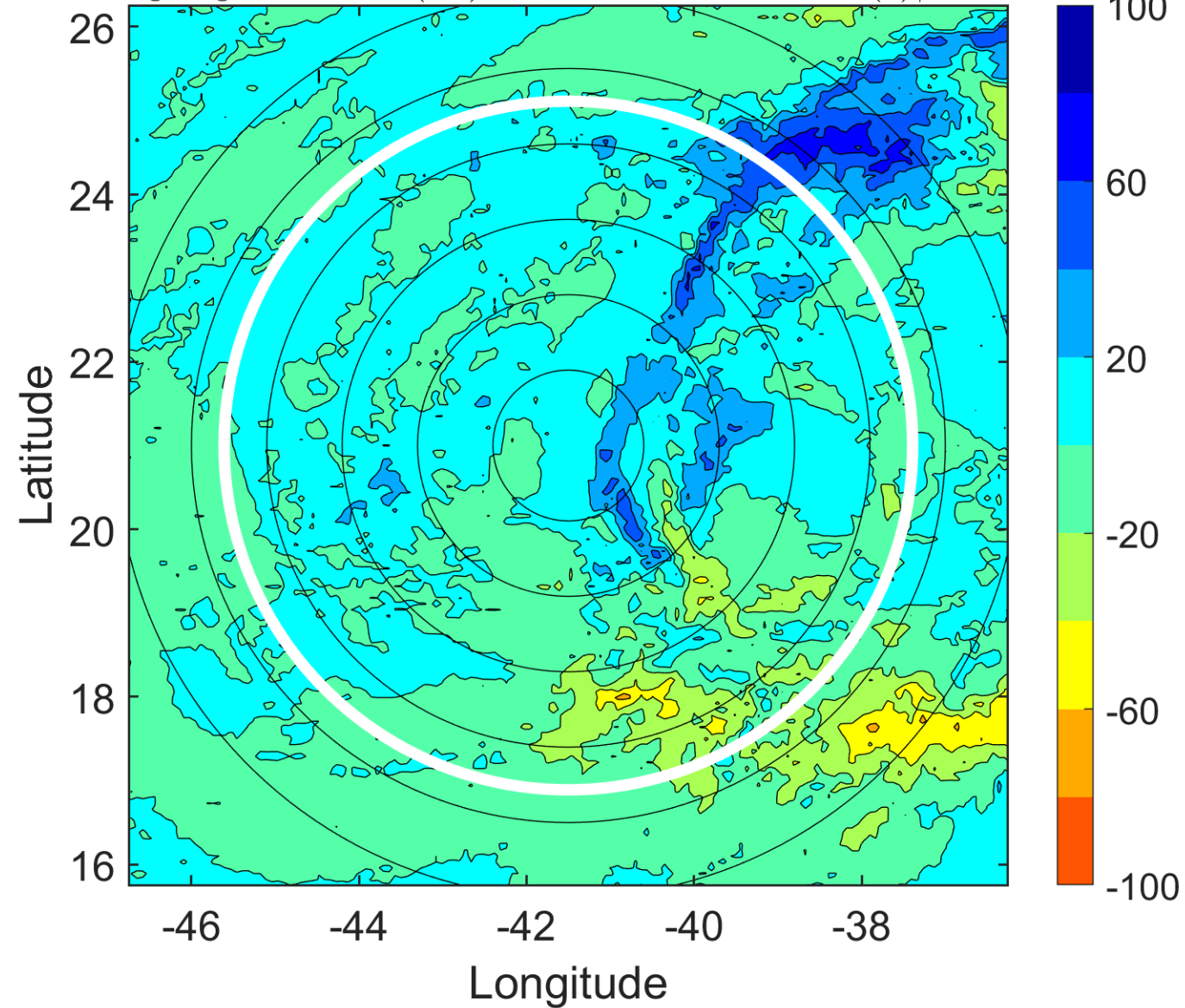
Δ t: 2012100418 (15.2 LT) - 2012100412 (9.2 LT)

Lightning: 15.2 LT \pm 1.5 h (dots)

PT: SLCP | EA: INACT

15L (OSCAR) | 45 kt TS

S: 13.2 m s⁻¹ (H) | H: 101°



IR BT & Lightning

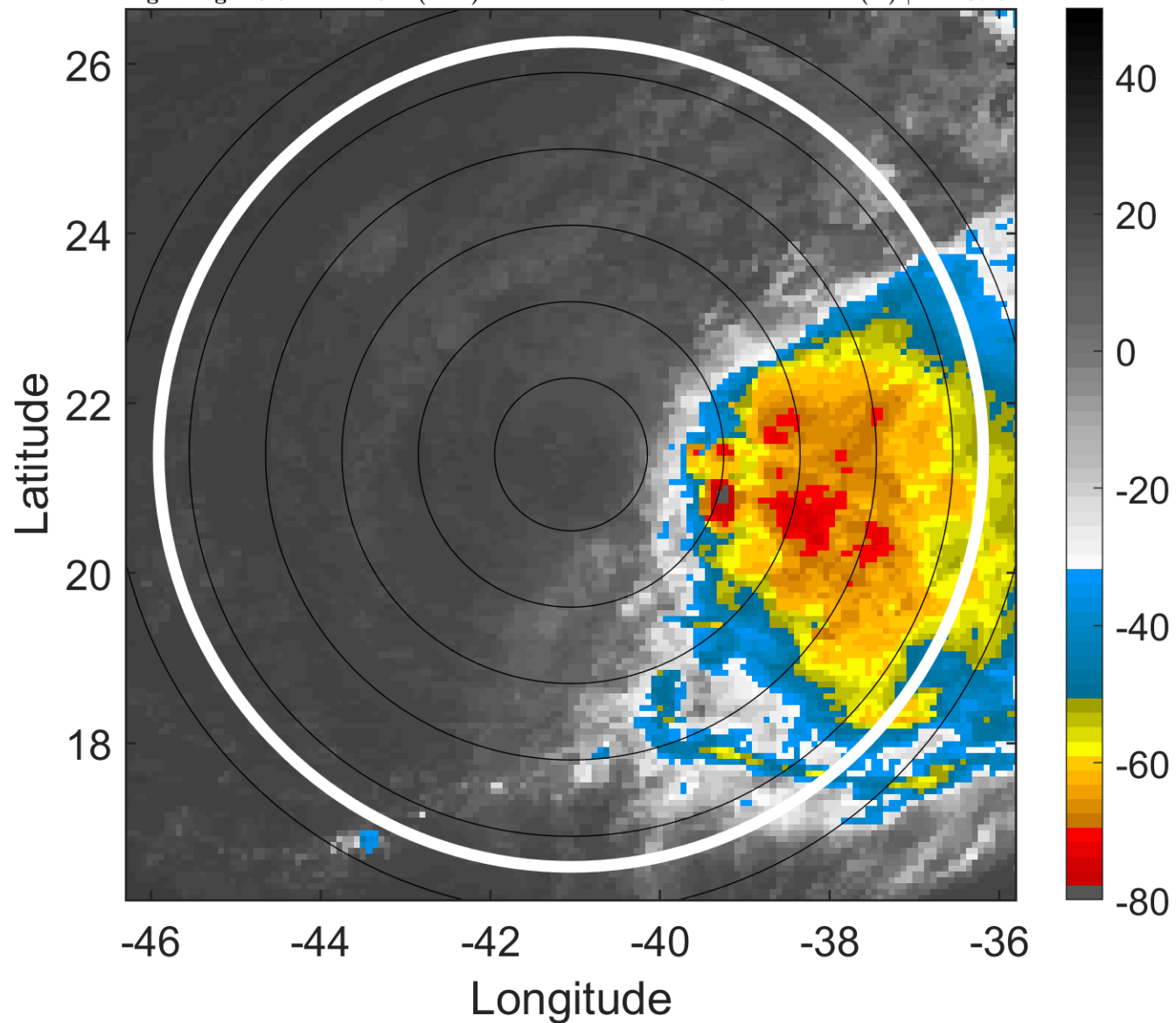
t: 2012100421 (18.3 LT)

Lightning: 18.3 LT \pm 1.5 h (dots)

PT: SLCP | EA: INACT

15L (OSCAR) | 45 kt TS

S: 12.4 m s⁻¹ (H) | H: 107.5°



6-h IR BT Differences & Lightning

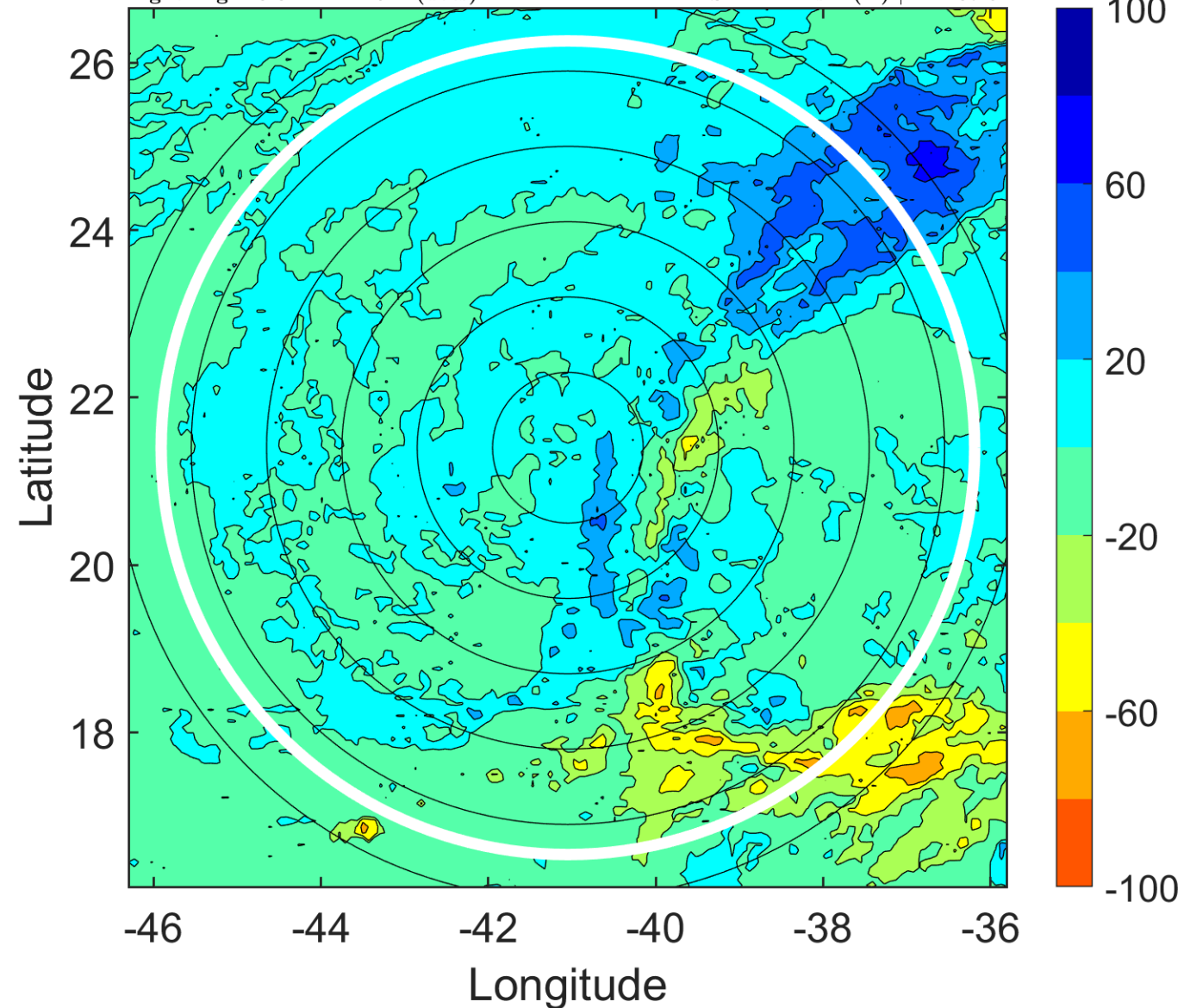
Δ t: 2012100421 (18.3 LT) - 2012100415 (12.2 LT)

Lightning: 18.3 LT \pm 1.5 h (dots)

PT: SLCP | EA: INACT

15L (OSCAR) | 45 kt TS

S: 12.4 m s⁻¹ (H) | H: 107.5°



IR BT & Lightning

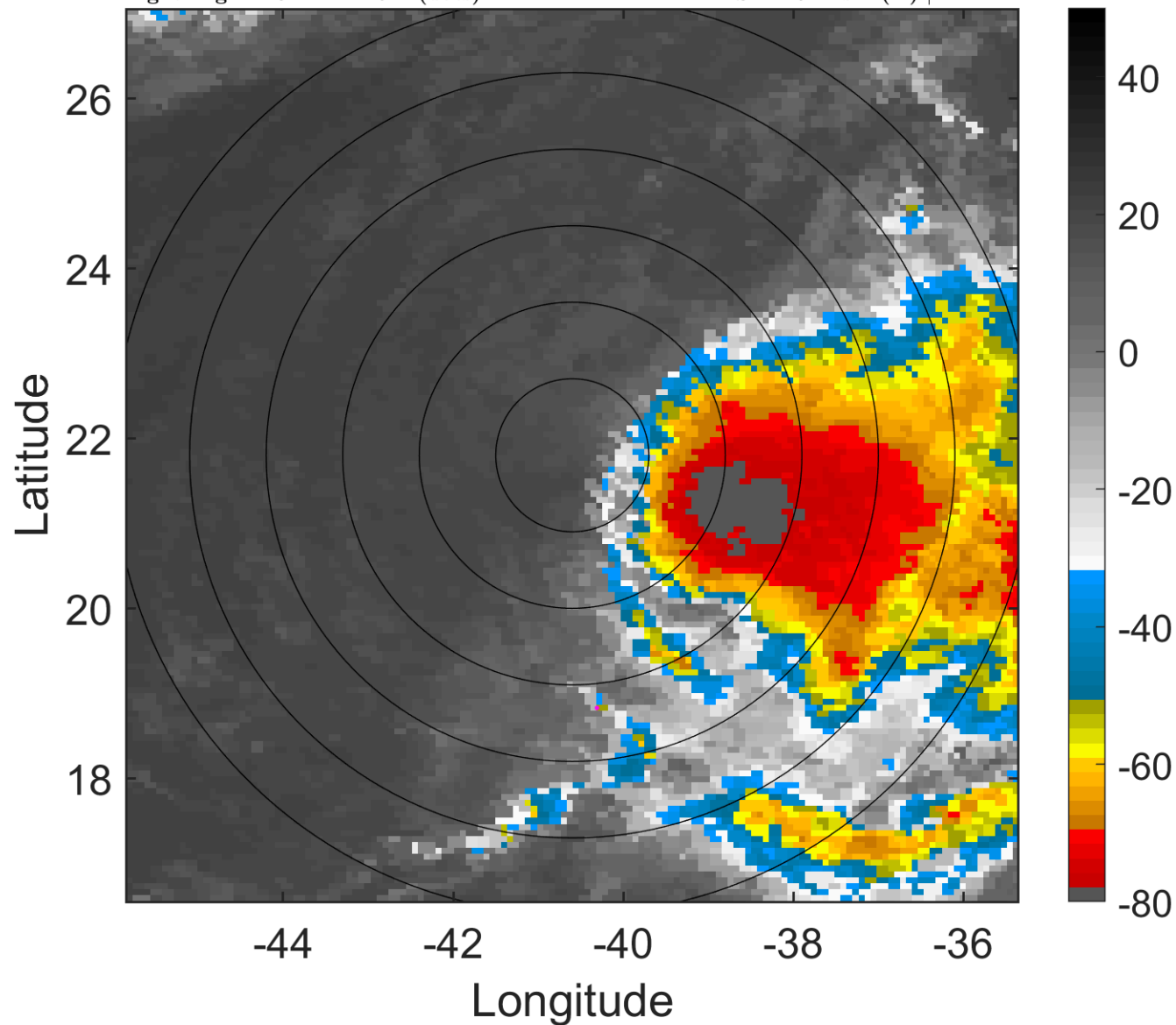
t: 2012100500 (21.3 LT)

Lightning: 21.3 LT \pm 1.5 h (dots)

PT: SLCP | EA: INACT

15L (OSCAR) | 45 kt TS

S: 11.6 m s⁻¹ (H) | H: 114°



6-h IR BT Differences & Lightning

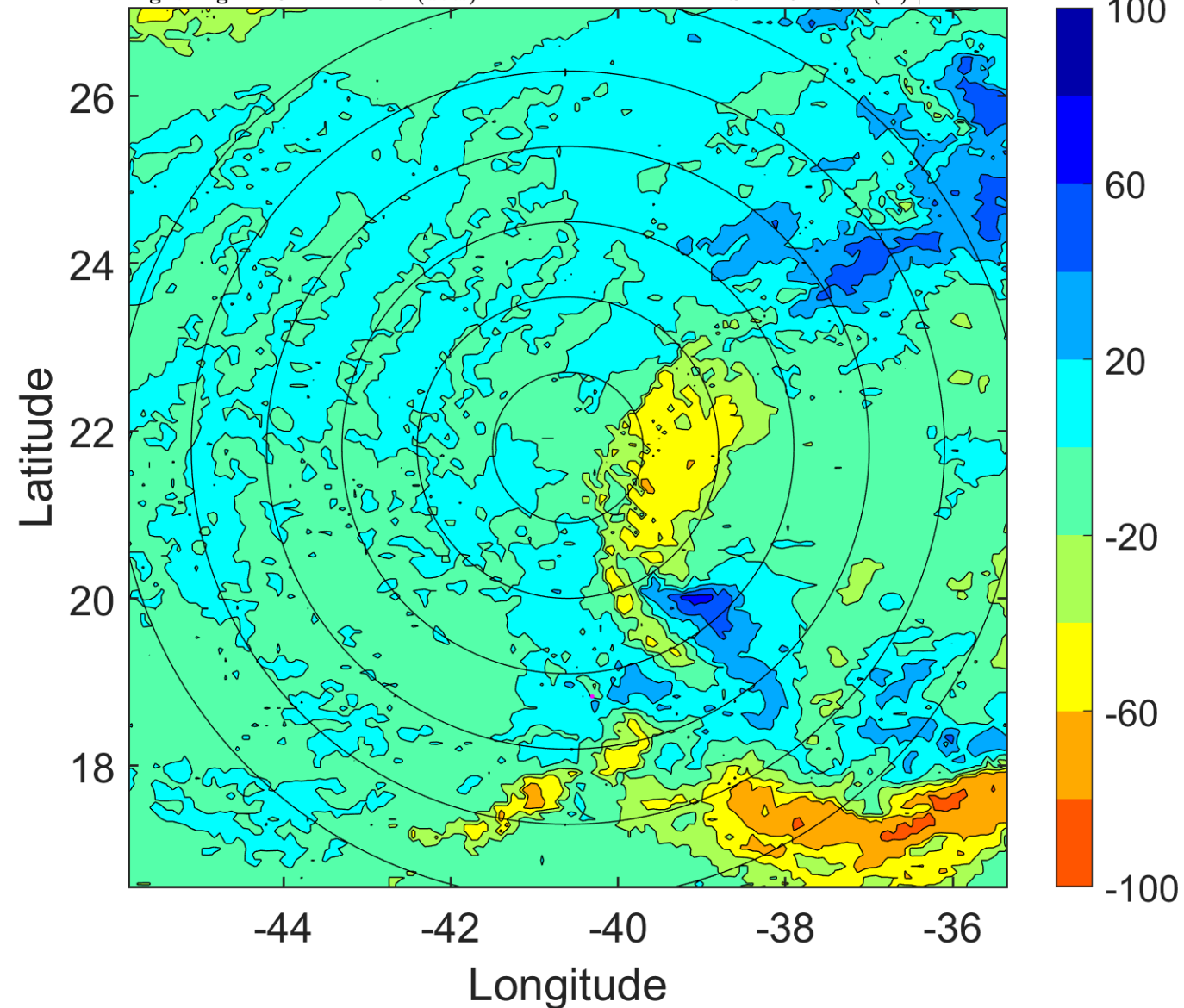
Δ t: 2012100500 (21.3 LT) - 2012100418 (15.2 LT)

Lightning: 21.3 LT \pm 1.5 h (dots)

PT: SLCP | EA: INACT

15L (OSCAR) | 45 kt TS

S: 11.6 m s⁻¹ (H) | H: 114°



IR BT & Lightning

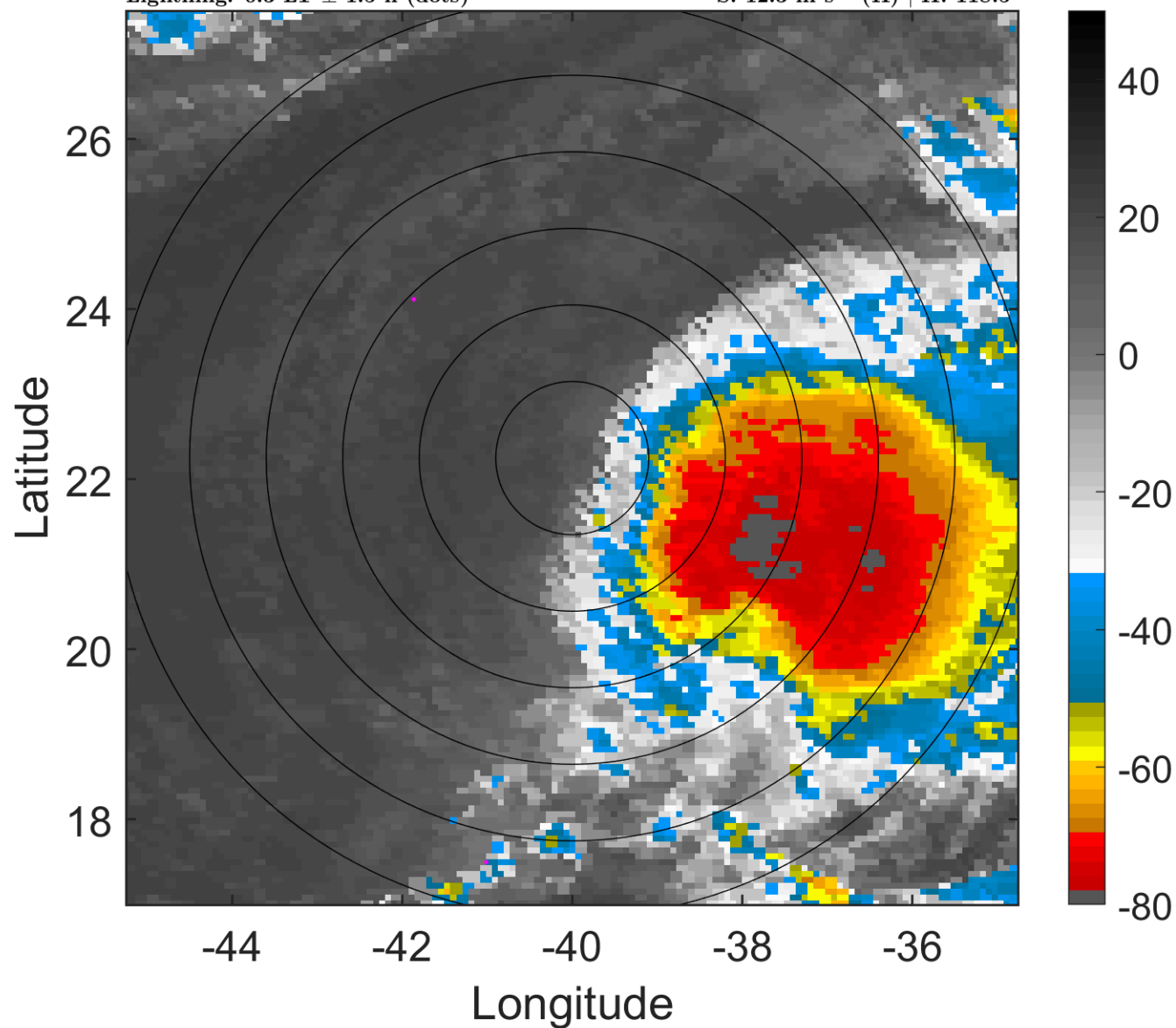
t: 2012100503 (0.3 LT)

Lightning: 0.3 LT \pm 1.5 h (dots)

PT: NP | EA: INACT

15L (OSCAR) | 45 kt TS

S: 12.3 m s⁻¹ (H) | H: 118.5°



6-h IR BT Differences & Lightning

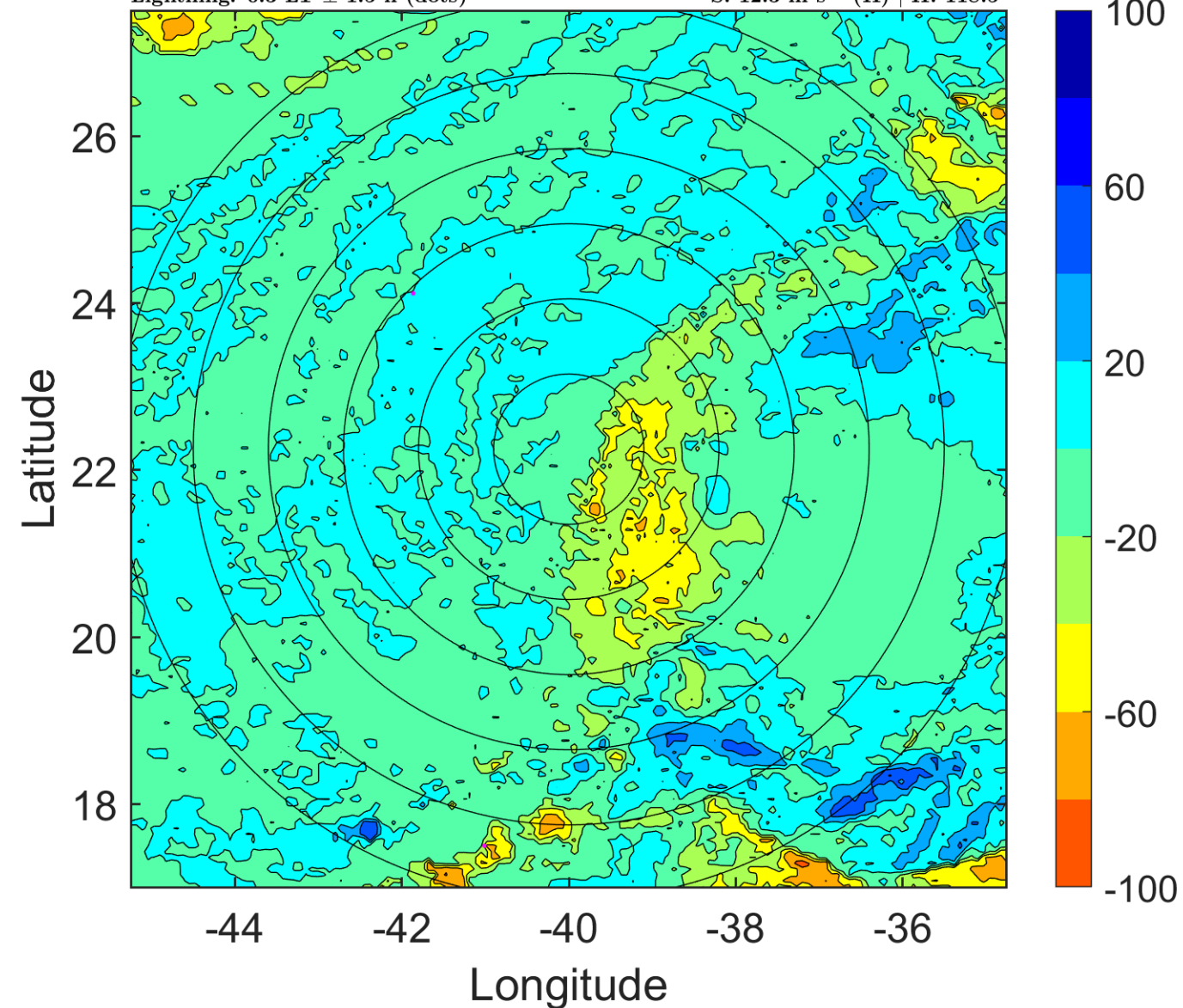
Δ t: 2012100503 (0.3 LT) - 2012100421 (18.3 LT)

Lightning: 0.3 LT \pm 1.5 h (dots)

PT: NP | EA: INACT

15L (OSCAR) | 45 kt TS

S: 12.3 m s⁻¹ (H) | H: 118.5°



IR BT & Lightning

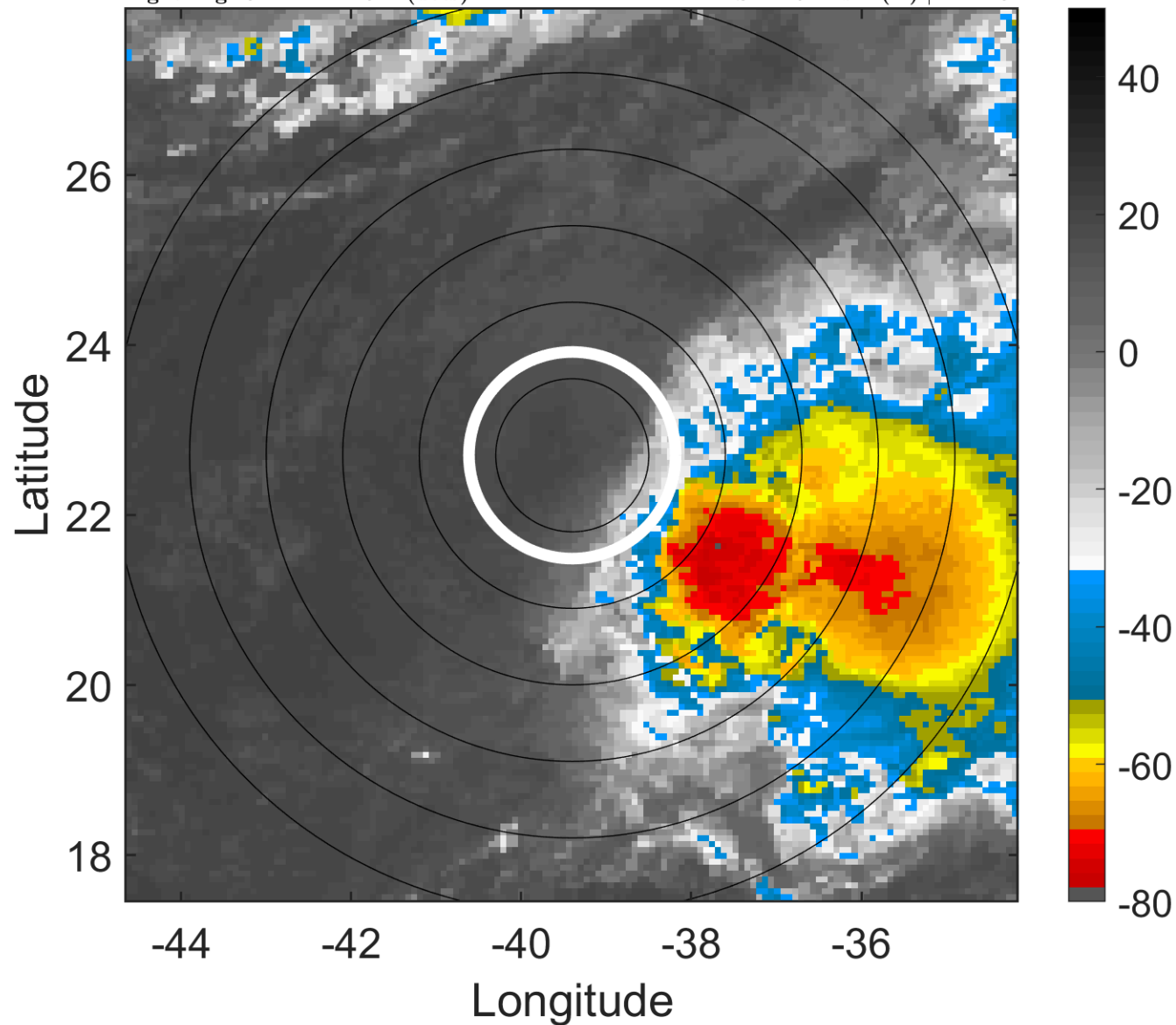
t: 2012100506 (3.4 LT)

Lightning: 3.4 LT \pm 1.5 h (dots)

PT: NP | EA: INACT

15L (OSCAR) | 45 kt TS

S: 12.9 m s⁻¹ (H) | H: 123°



6-h IR BT Differences & Lightning

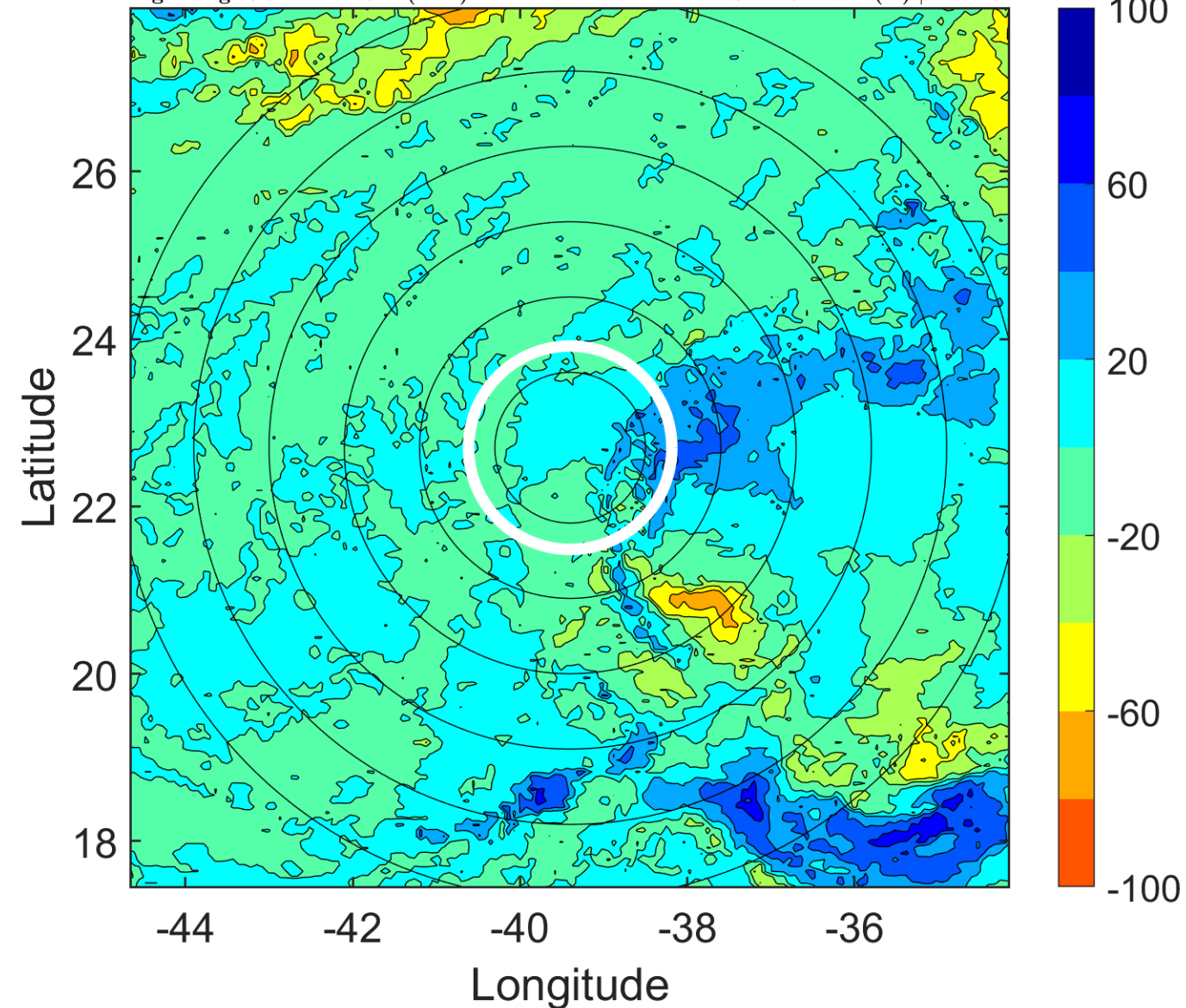
Δ t: 2012100506 (3.4 LT) - 2012100500 (21.3 LT)

Lightning: 3.4 LT \pm 1.5 h (dots)

PT: NP | EA: INACT

15L (OSCAR) | 45 kt TS

S: 12.9 m s⁻¹ (H) | H: 123°



IR BT & Lightning

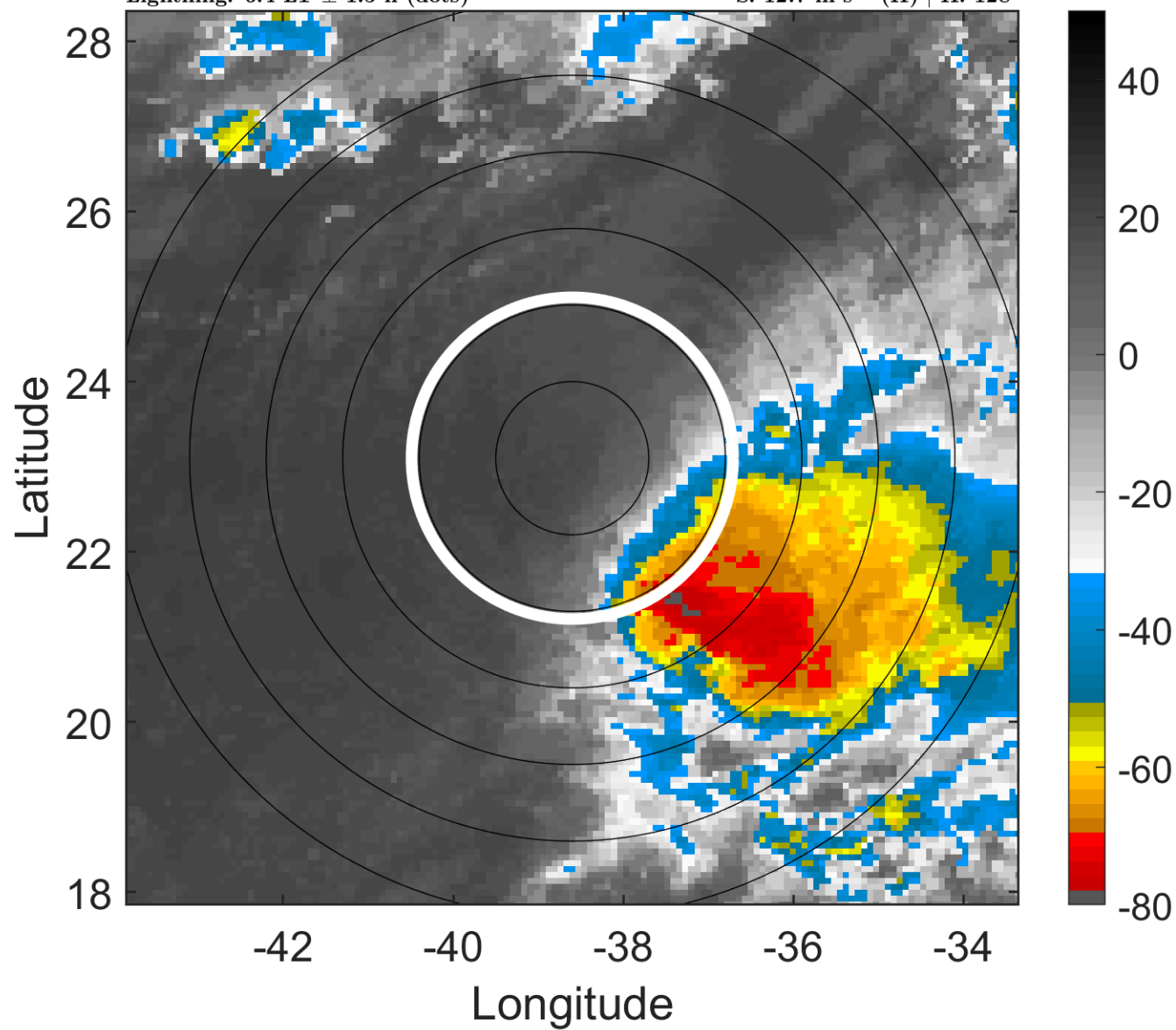
t: 2012100509 (6.4 LT)

Lightning: 6.4 LT \pm 1.5 h (dots)

PT: NP | EA: INACT

15L (OSCAR) | 45 kt TS

S: 12.7 m s⁻¹ (H) | H: 128°



6-h IR BT Differences & Lightning

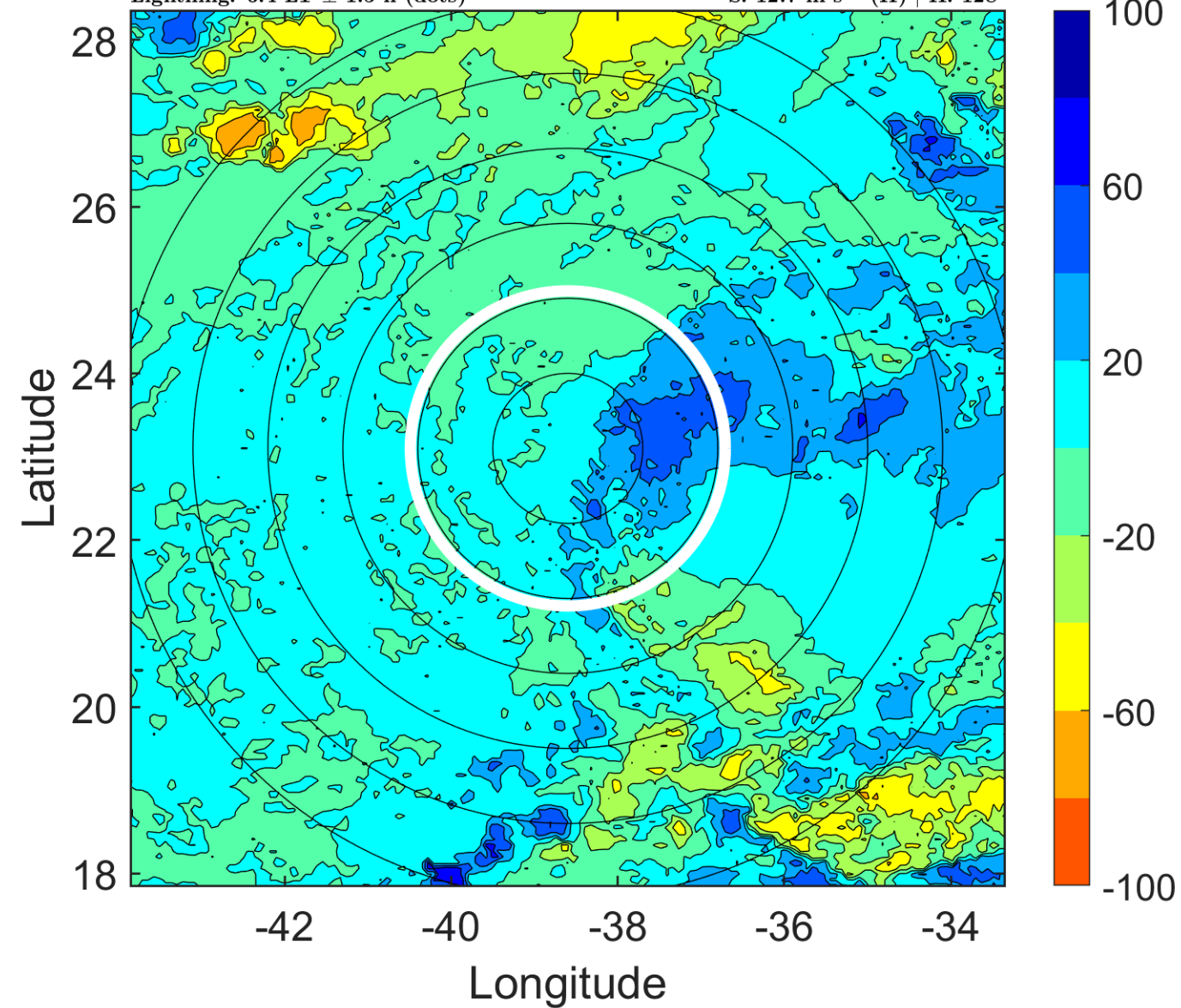
Δ t: 2012100509 (6.4 LT) - 2012100503 (0.3 LT)

Lightning: 6.4 LT \pm 1.5 h (dots)

PT: NP | EA: INACT

15L (OSCAR) | 45 kt TS

S: 12.7 m s⁻¹ (H) | H: 128°



IR BT & Lightning

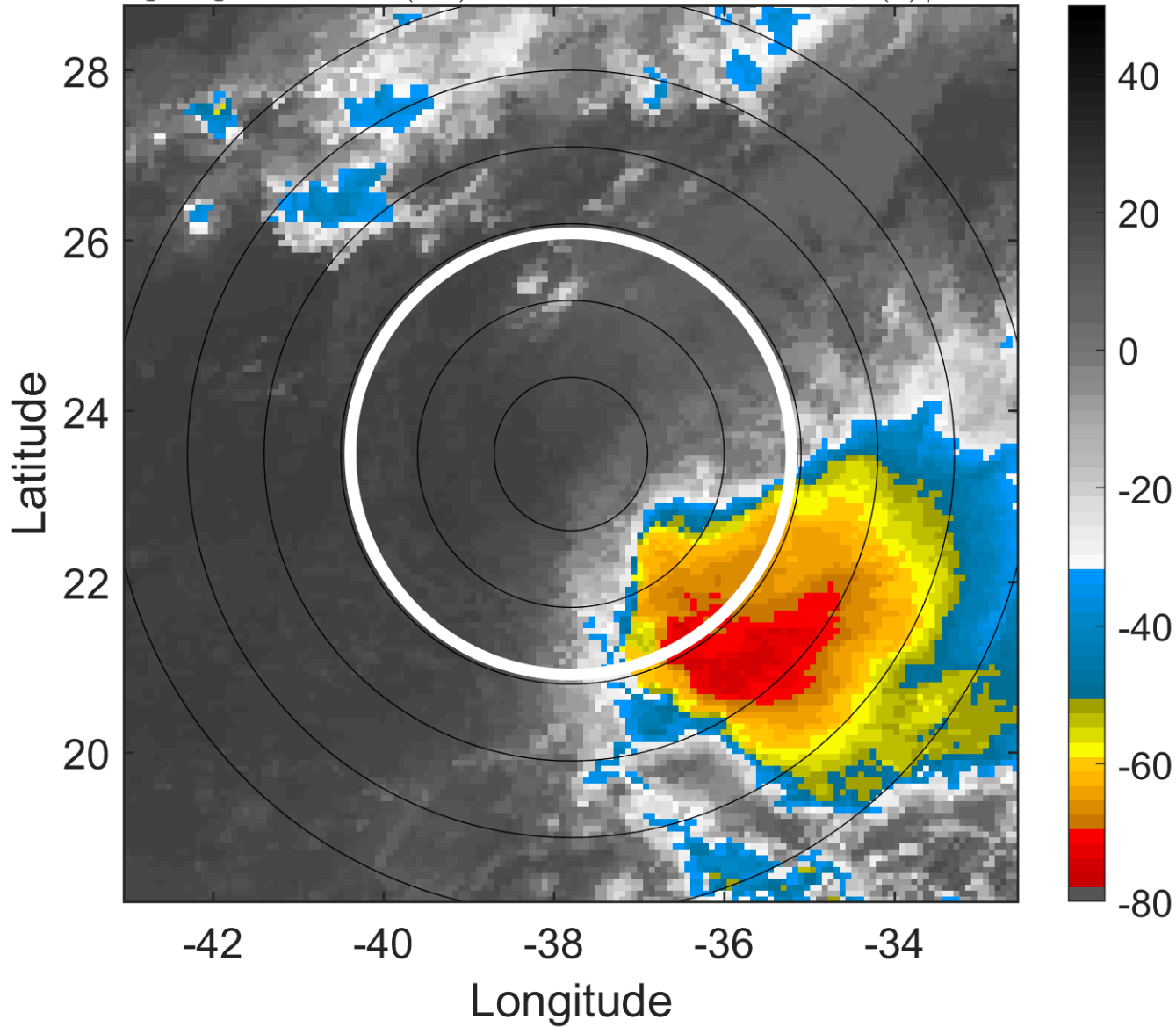
t: 2012100512 (9.5 LT)

Lightning: 9.5 LT \pm 1.5 h (dots)

PT: NP | EA: INACT

15L (OSCAR) | 45 kt TS

S: 12.5 m s⁻¹ (H) | H: 133°



6-h IR BT Differences & Lightning

Δ t: 2012100512 (9.5 LT) - 2012100506 (3.4 LT)

Lightning: 9.5 LT \pm 1.5 h (dots)

PT: NP | EA: INACT

15L (OSCAR) | 45 kt TS

S: 12.5 m s⁻¹ (H) | H: 133°

