

IR BT & Lightning

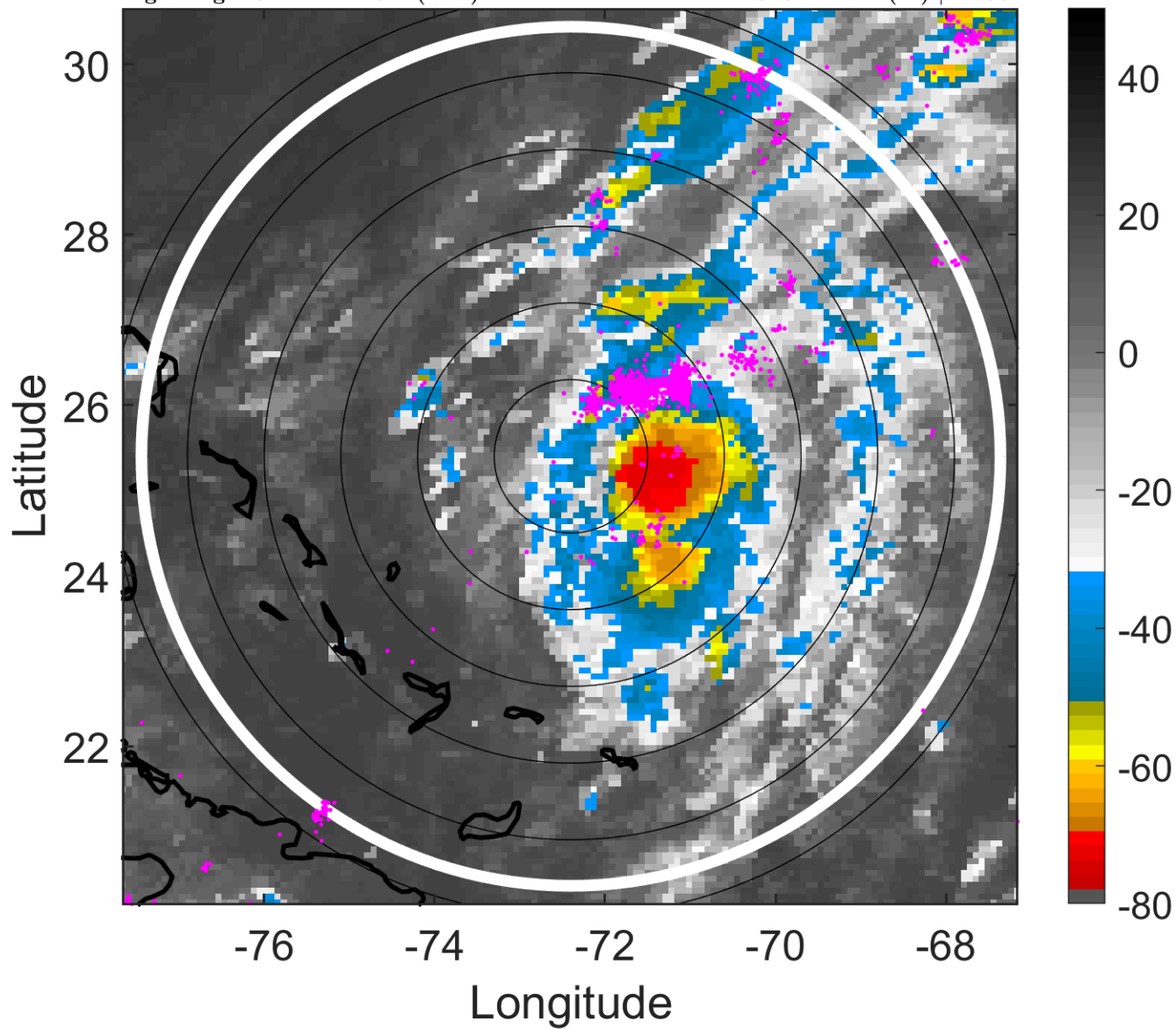
t: 2012101100 (19.2 LT)

Lightning: 19.2 LT \pm 1.5 h (dots)

PT: NP | EA: INACT

16L (PATTY) | 30 kt TD

S: 9.1 m s⁻¹ (M) | H: 55°



6-h IR BT Differences & Lightning

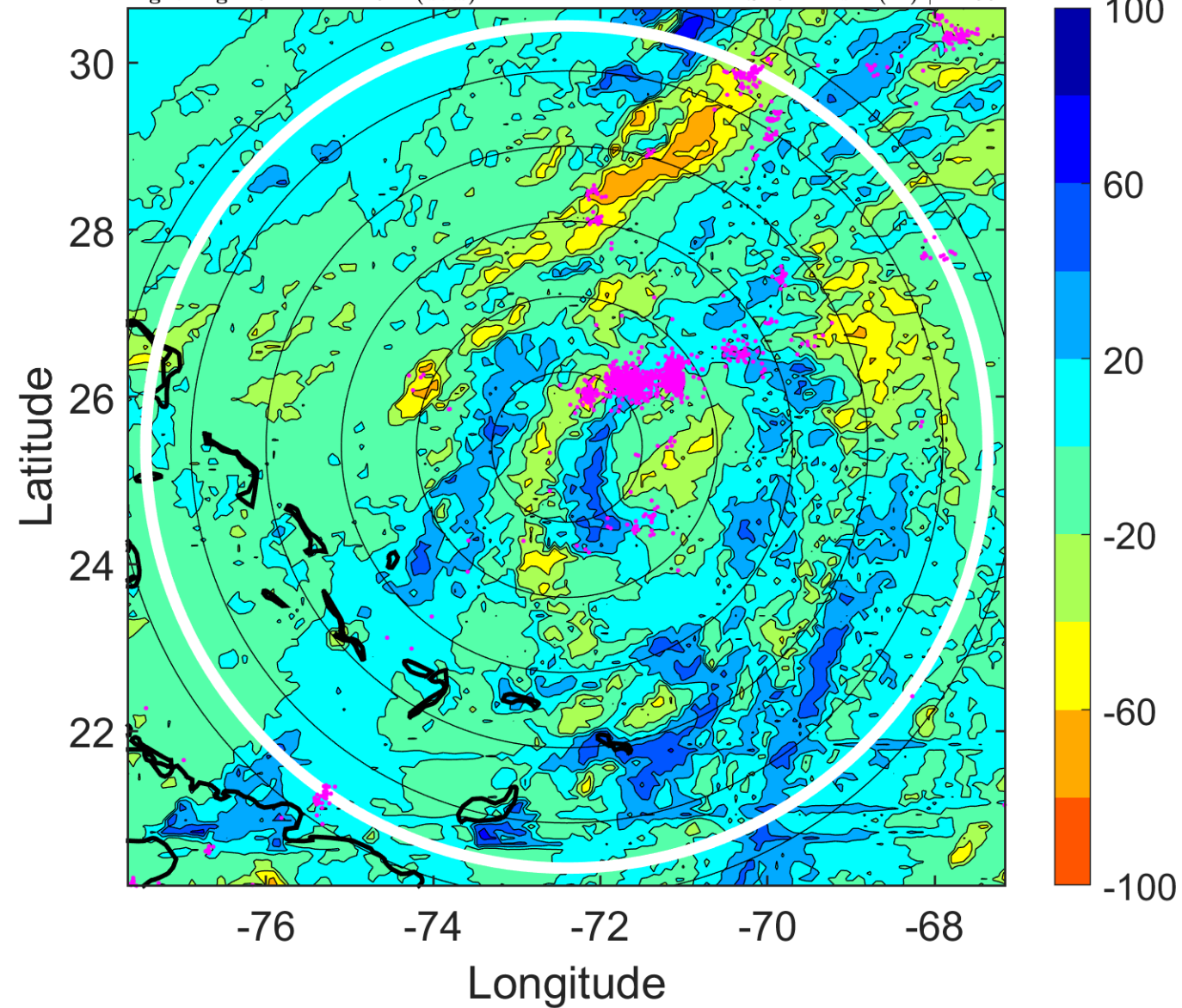
Δ t: 2012101100 (19.2 LT) - 2012101018 (13.2 LT)

Lightning: 19.2 LT \pm 1.5 h (dots)

PT: NP | EA: INACT

16L (PATTY) | 30 kt TD

S: 9.1 m s⁻¹ (M) | H: 55°



IR BT & Lightning

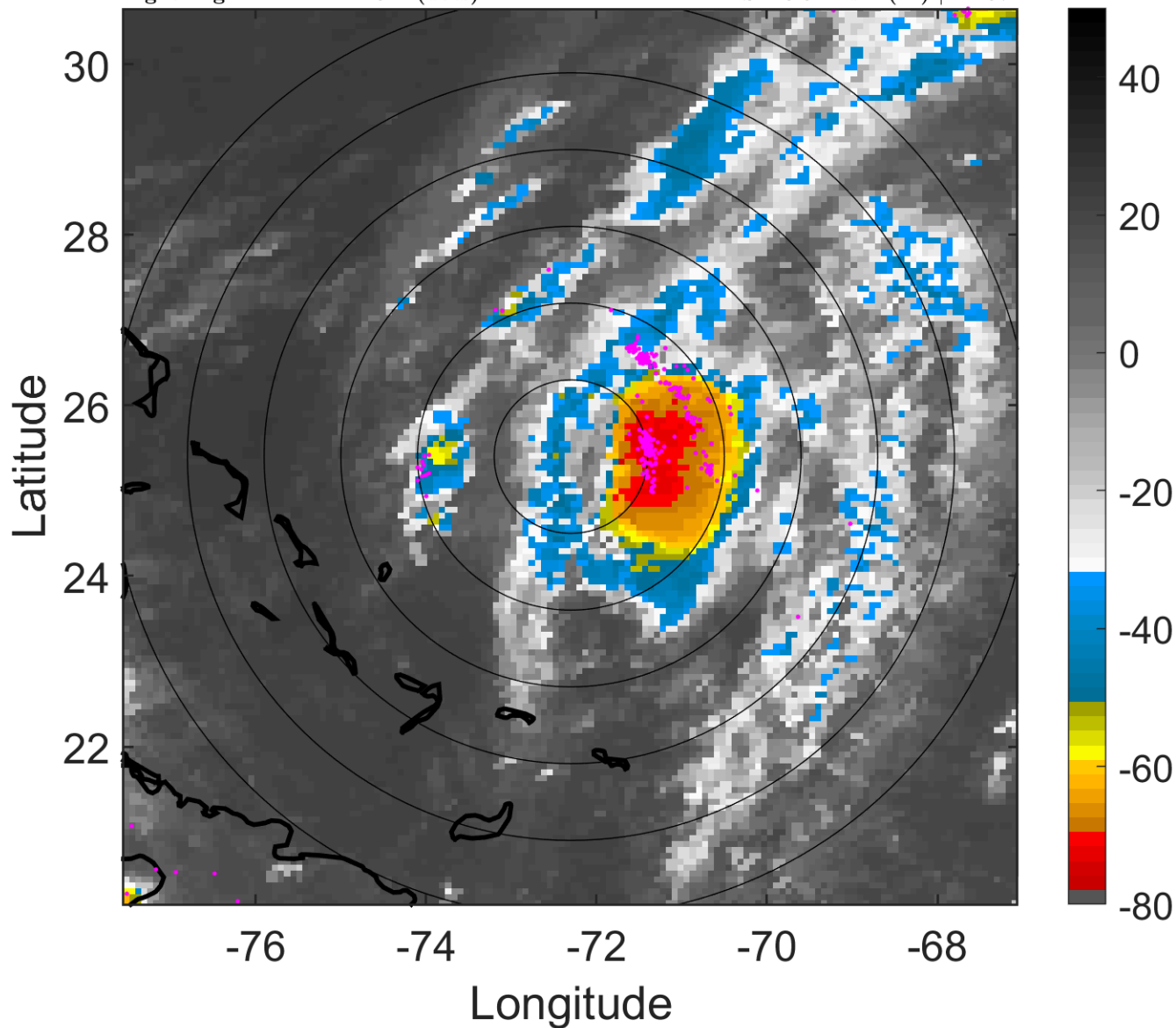
t: 2012101103 (22.2 LT)

Lightning: 22.2 LT \pm 1.5 h (dots)

PT: NP | EA: INACT

16L (PATTY) | 32.5 kt TD

S: 10.5 m s⁻¹ (M) | H: 67°



6-h IR BT Differences & Lightning

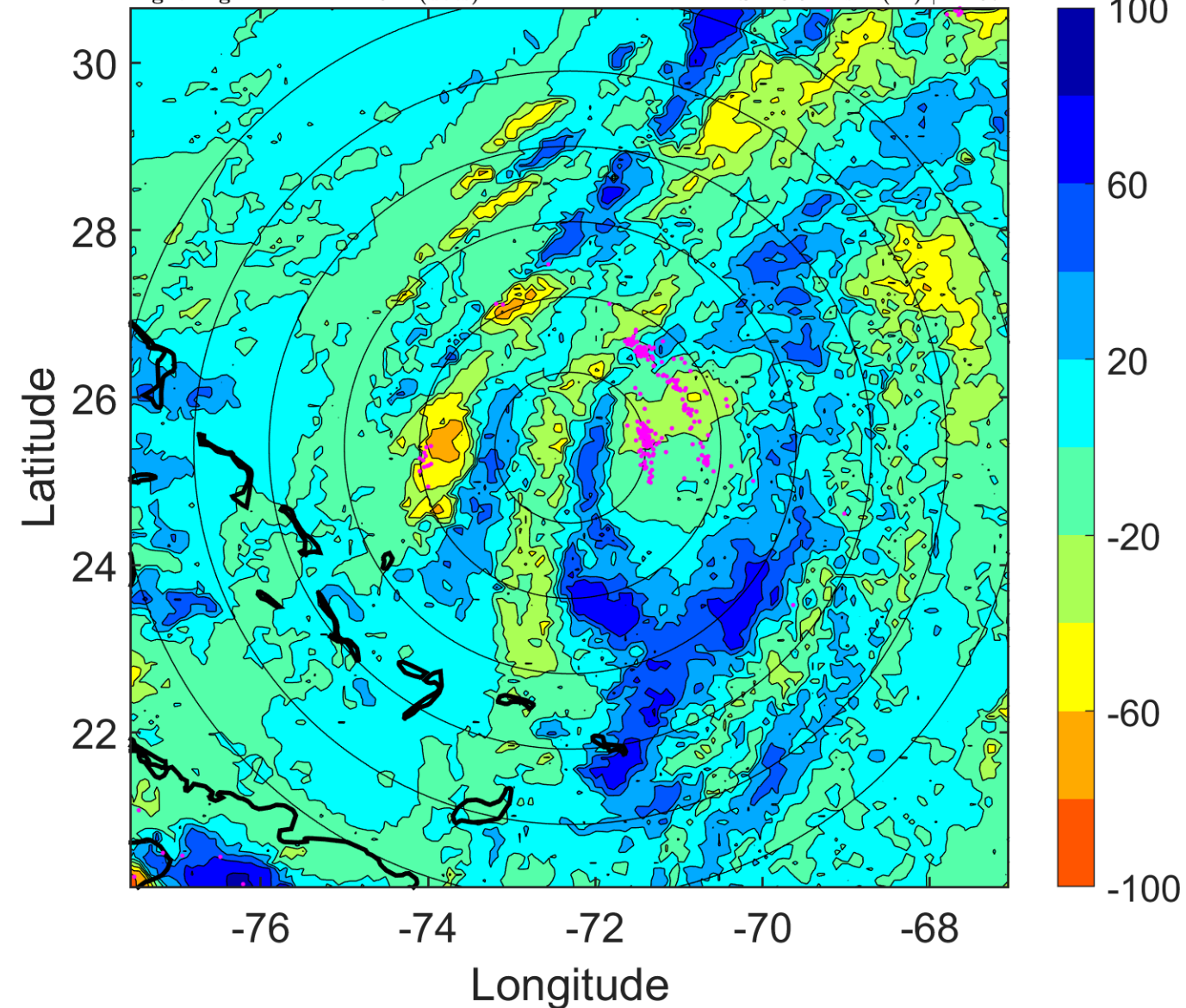
Δ t: 2012101103 (22.2 LT) - 2012101021 (16.2 LT)

Lightning: 22.2 LT \pm 1.5 h (dots)

PT: NP | EA: INACT

16L (PATTY) | 32.5 kt TD

S: 10.5 m s⁻¹ (M) | H: 67°



IR BT & Lightning

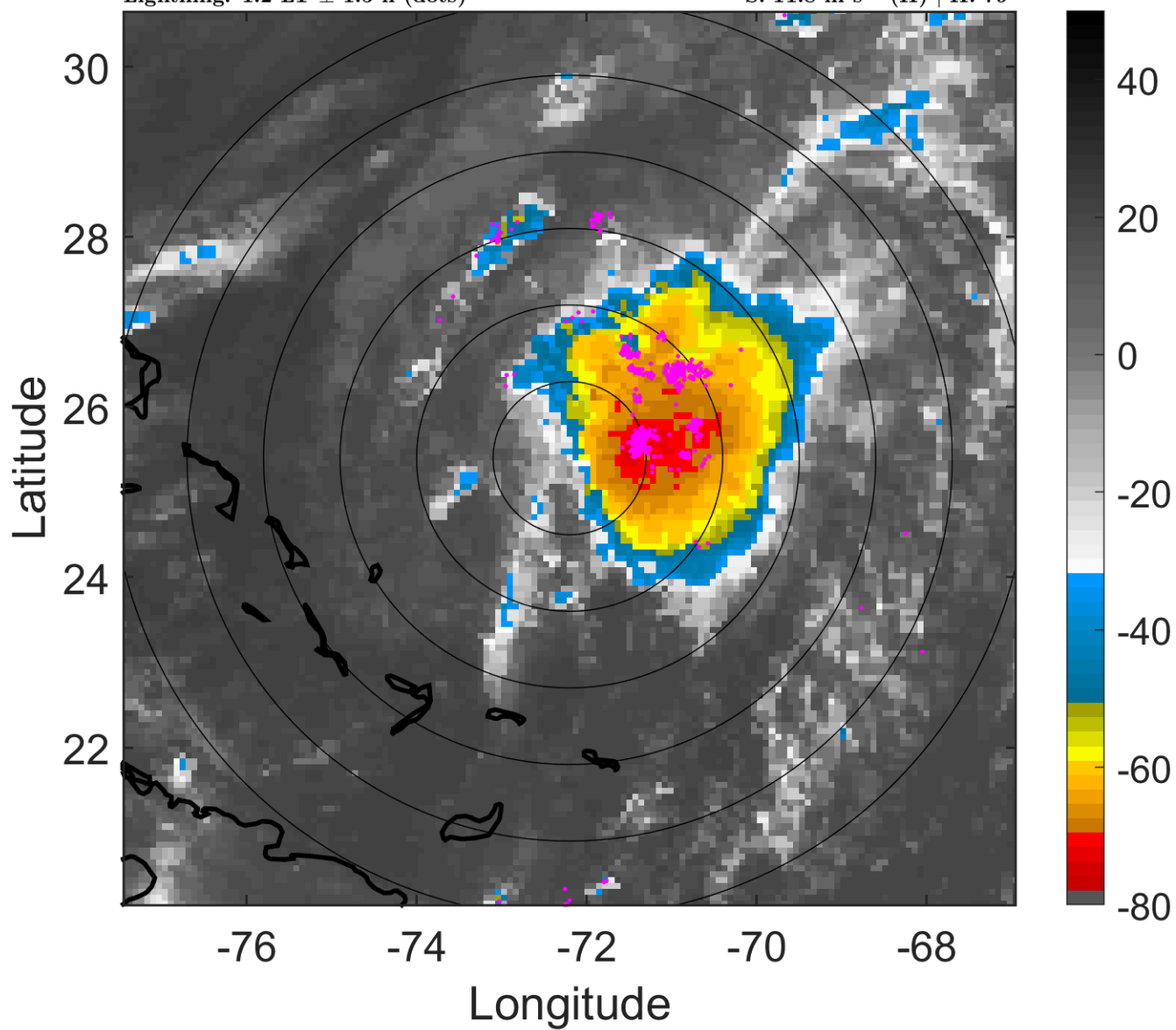
t: 2012101106 (1.2 LT)

Lightning: 1.2 LT \pm 1.5 h (dots)

PT: LLCP | EA: ACT

16L (PATY) | 35 kt TS

S: 11.8 m s⁻¹ (H) | H: 79°



6-h IR BT Differences & Lightning

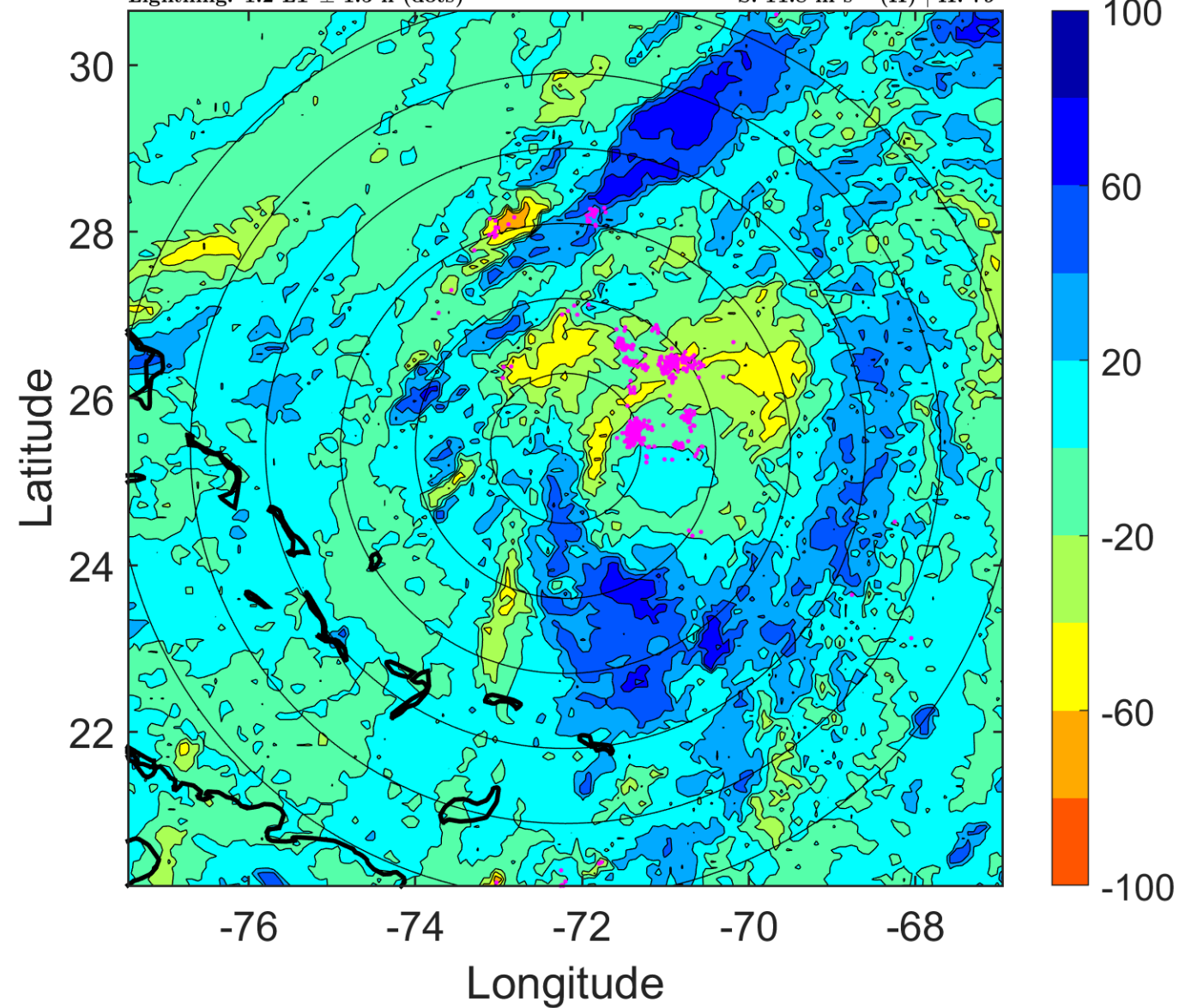
Δ t: 2012101106 (1.2 LT) - 2012101100 (19.2 LT)

Lightning: 1.2 LT \pm 1.5 h (dots)

PT: LLCP | EA: ACT

16L (PATY) | 35 kt TS

S: 11.8 m s⁻¹ (H) | H: 79°



IR BT & Lightning

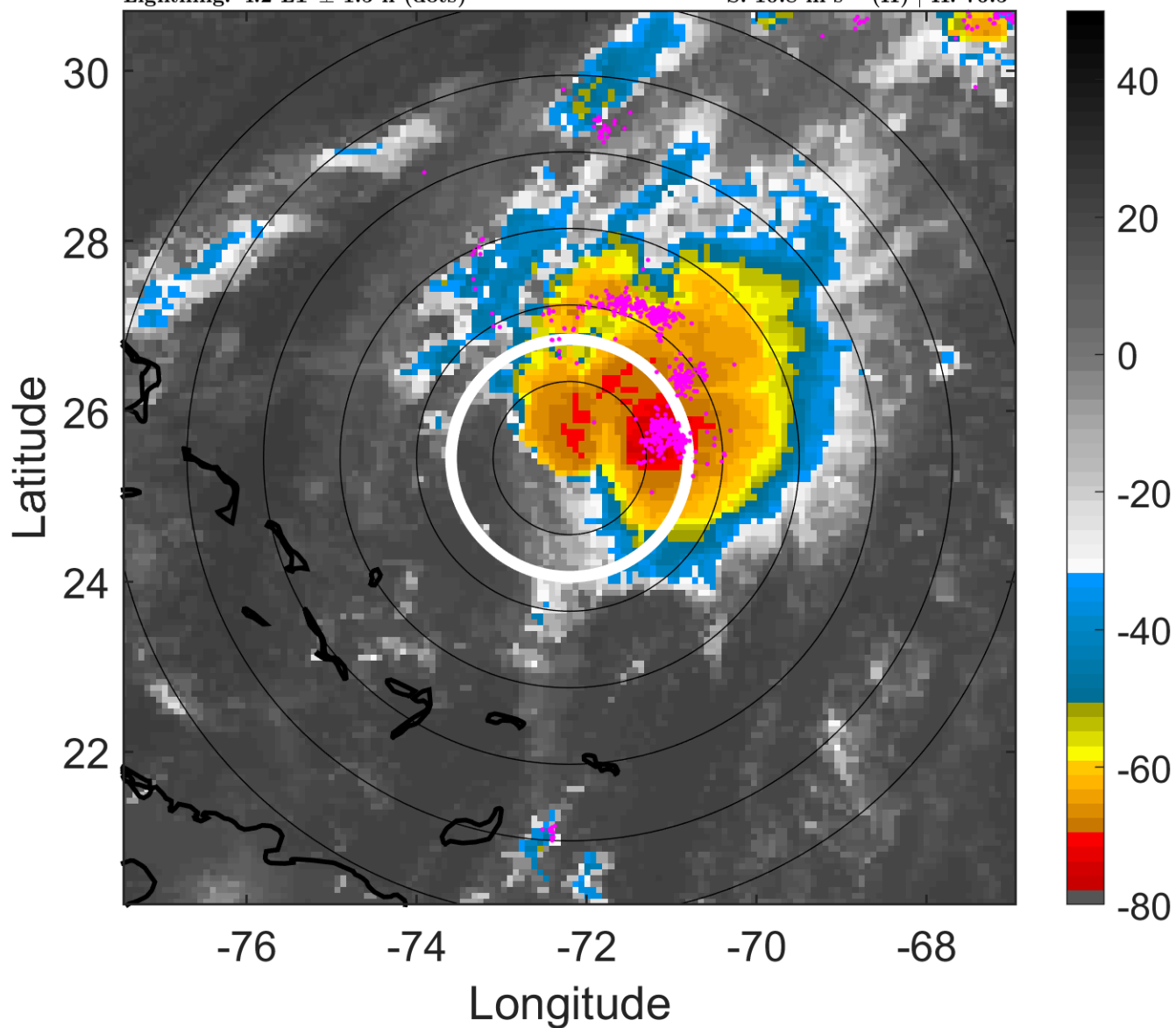
t: 2012101109 (4.2 LT)

Lightning: 4.2 LT \pm 1.5 h (dots)

PT: LLCP | EA: ACT

16L (PATY) | 35 kt TS

S: 10.8 m s⁻¹ (H) | H: 76.5°



6-h IR BT Differences & Lightning

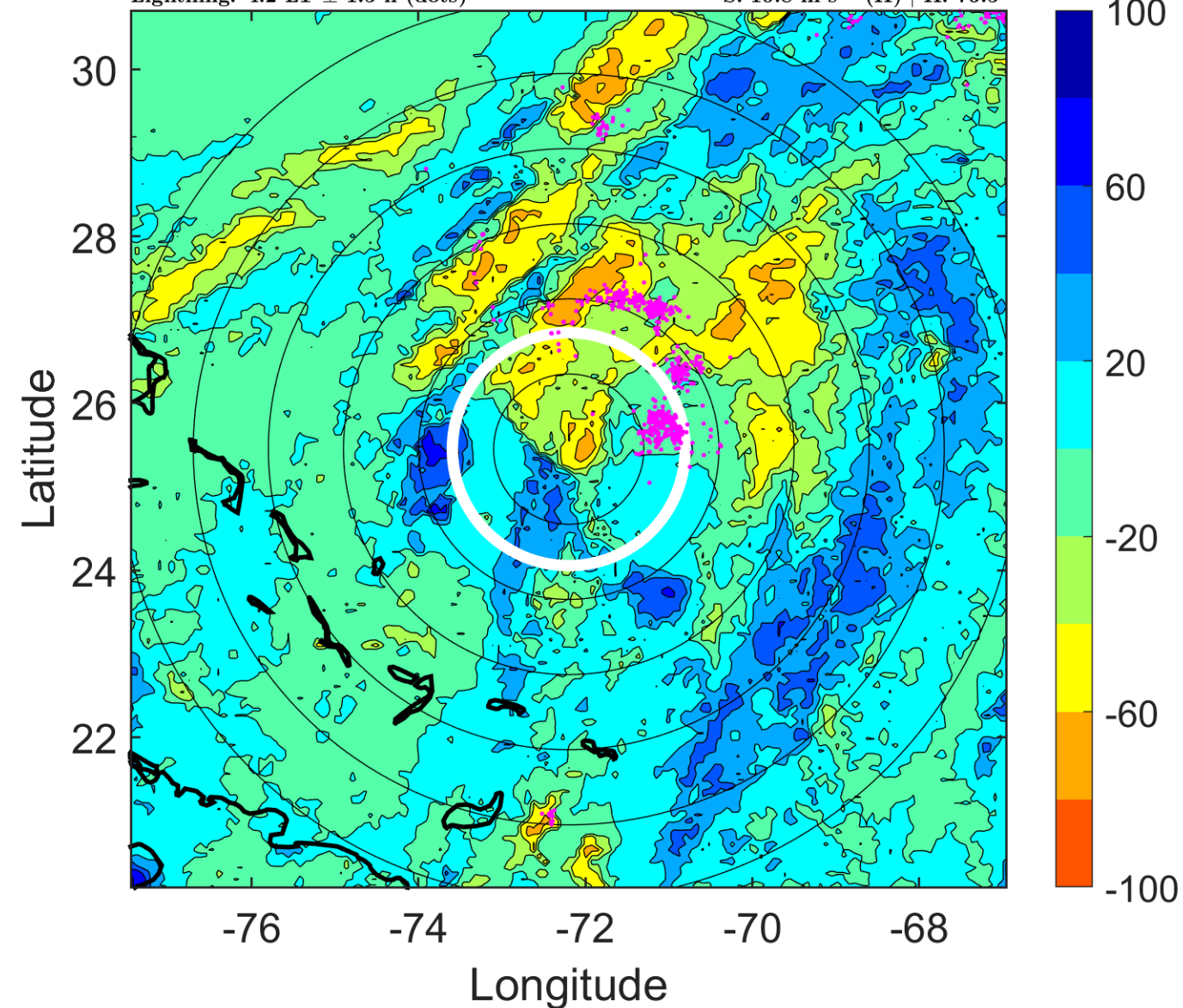
Δ t: 2012101109 (4.2 LT) - 2012101103 (22.2 LT)

Lightning: 4.2 LT \pm 1.5 h (dots)

PT: LLCP | EA: ACT

16L (PATY) | 35 kt TS

S: 10.8 m s⁻¹ (H) | H: 76.5°



IR BT & Lightning

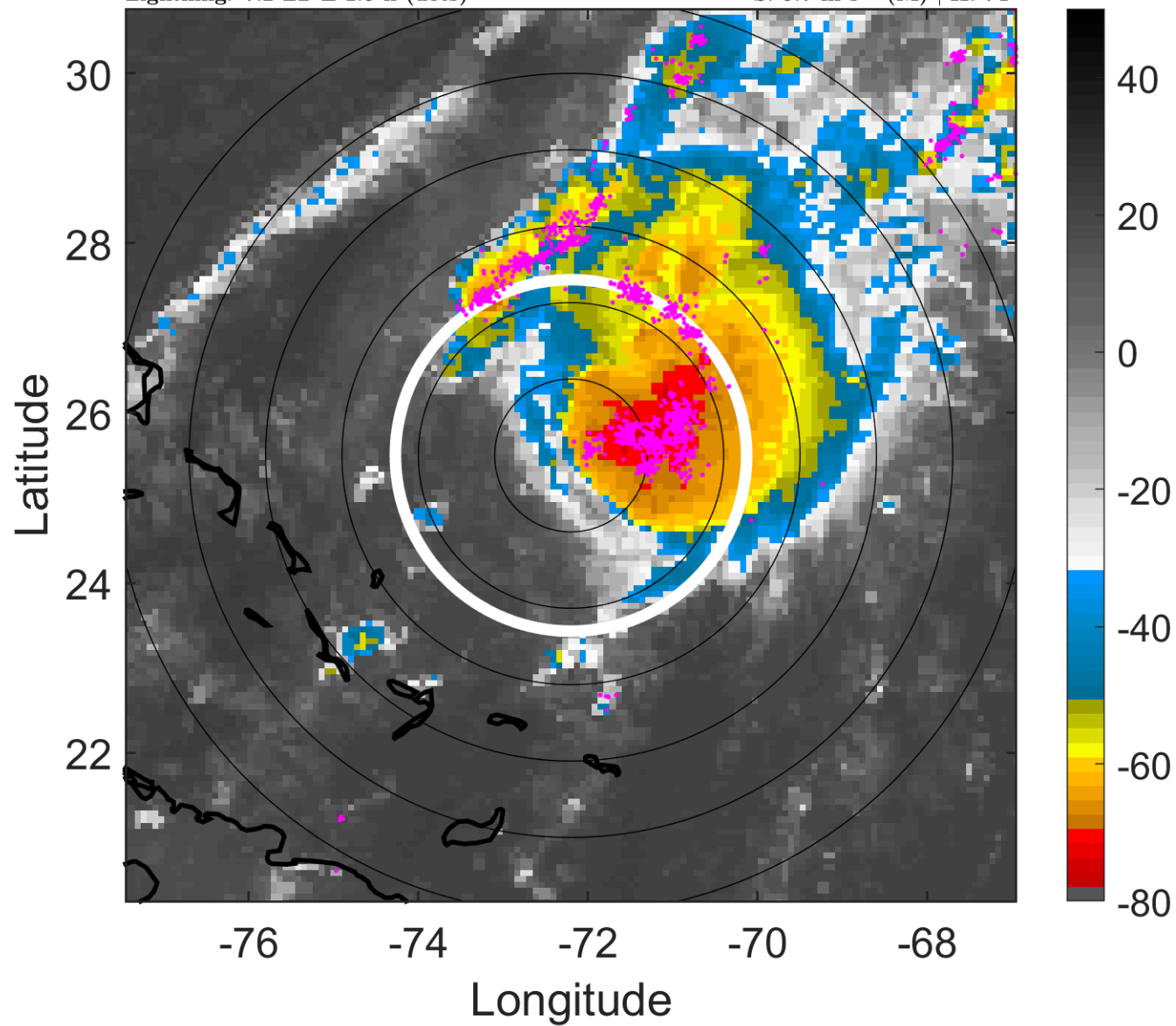
t: 2012101112 (7.2 LT)

Lightning: 7.2 LT \pm 1.5 h (dots)

PT: LLCP | EA: ACT

16L (PATTY) | 35 kt TS

S: 9.7 m s⁻¹ (M) | H: 74°



6-h IR BT Differences & Lightning

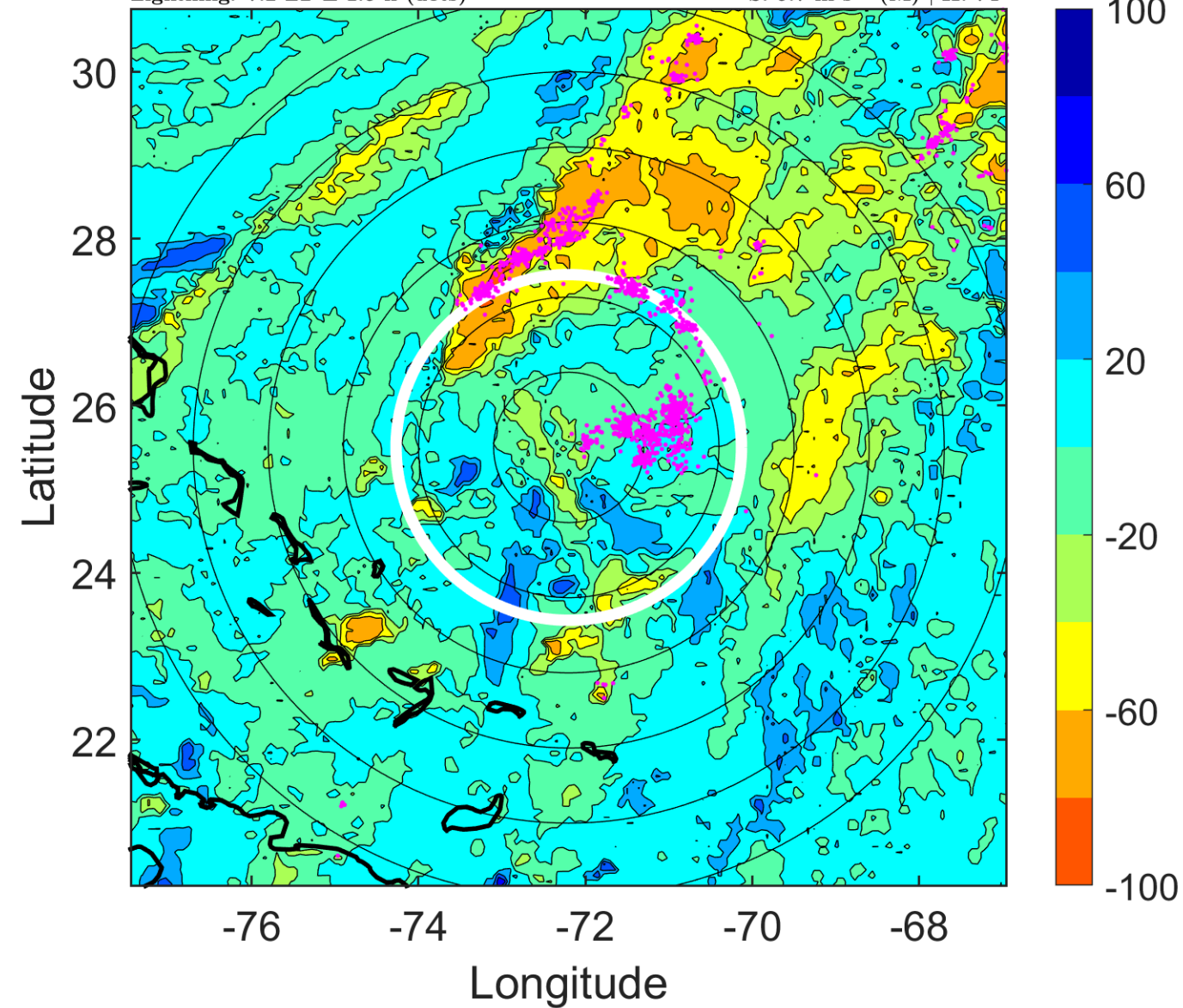
Δ t: 2012101112 (7.2 LT) - 2012101106 (1.2 LT)

Lightning: 7.2 LT \pm 1.5 h (dots)

PT: LLCP | EA: ACT

16L (PATTY) | 35 kt TS

S: 9.7 m s⁻¹ (M) | H: 74°



IR BT & Lightning

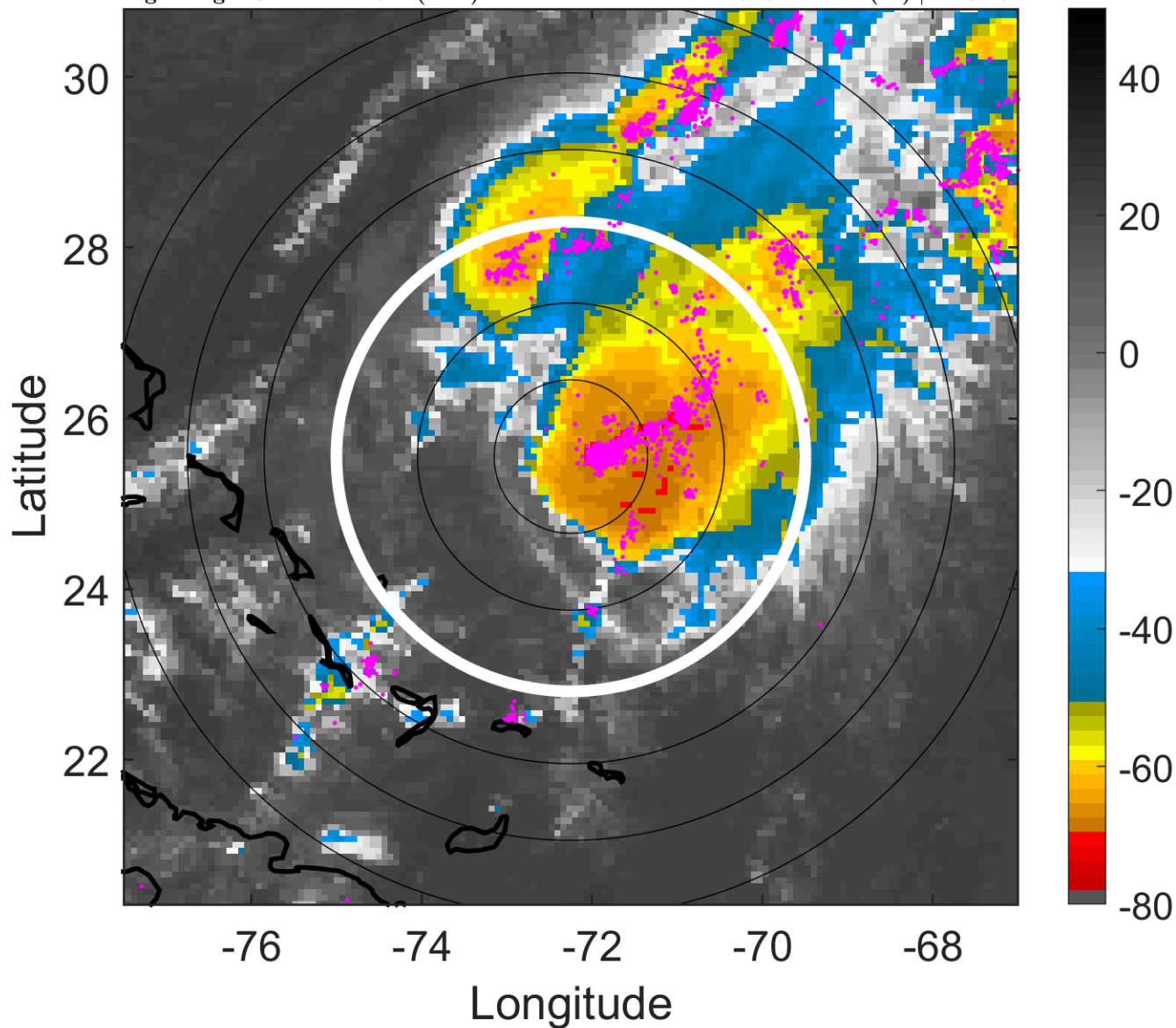
t: 2012101115 (10.2 LT)

Lightning: 10.2 LT \pm 1.5 h (dots)

PT: LLCP | EA: ACT

16L (PATY) | 35 kt TS

S: 9.2 m s⁻¹ (M) | H: 54.5°



6-h IR BT Differences & Lightning

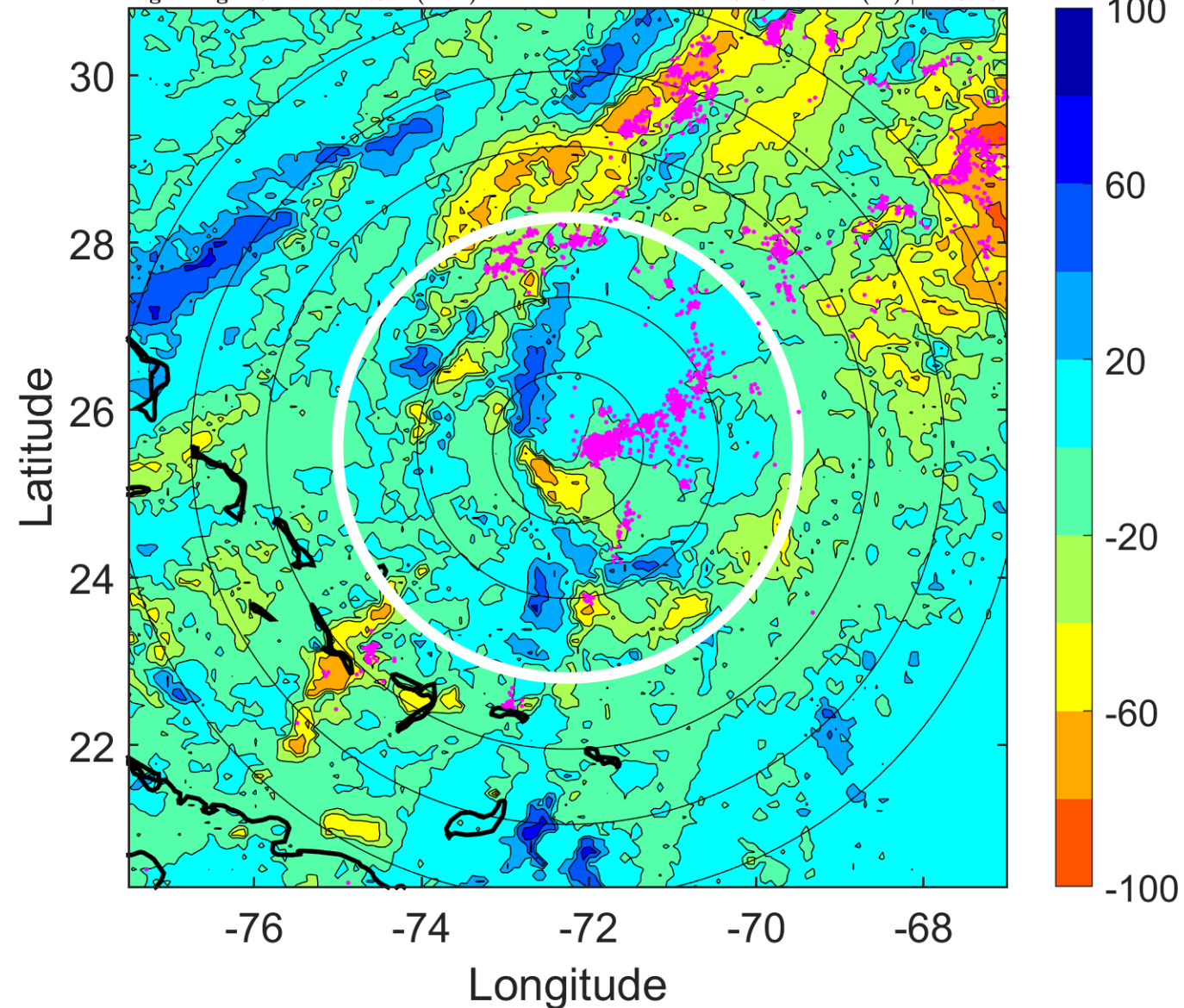
Δ t: 2012101115 (10.2 LT) - 2012101109 (4.2 LT)

Lightning: 10.2 LT \pm 1.5 h (dots)

PT: LLCP | EA: ACT

16L (PATY) | 35 kt TS

S: 9.2 m s⁻¹ (M) | H: 54.5°



IR BT & Lightning

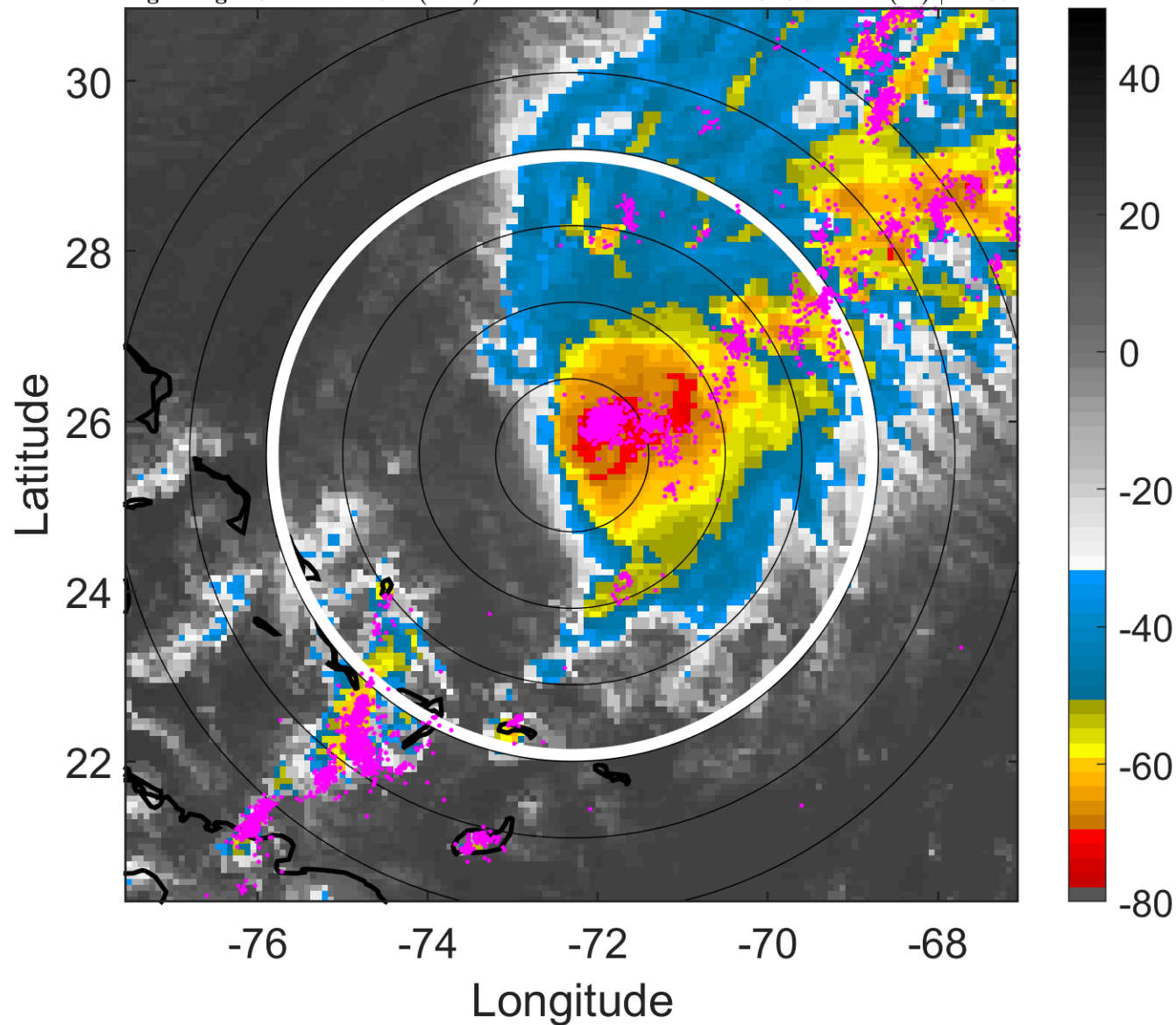
t: 2012101118 (13.2 LT)

Lightning: 13.2 LT \pm 1.5 h (dots)

PT: LLCP | EA: ACT

16L (PATTY) | 35 kt TS

S: 8.7 m s⁻¹ (M) | H: 35°



6-h IR BT Differences & Lightning

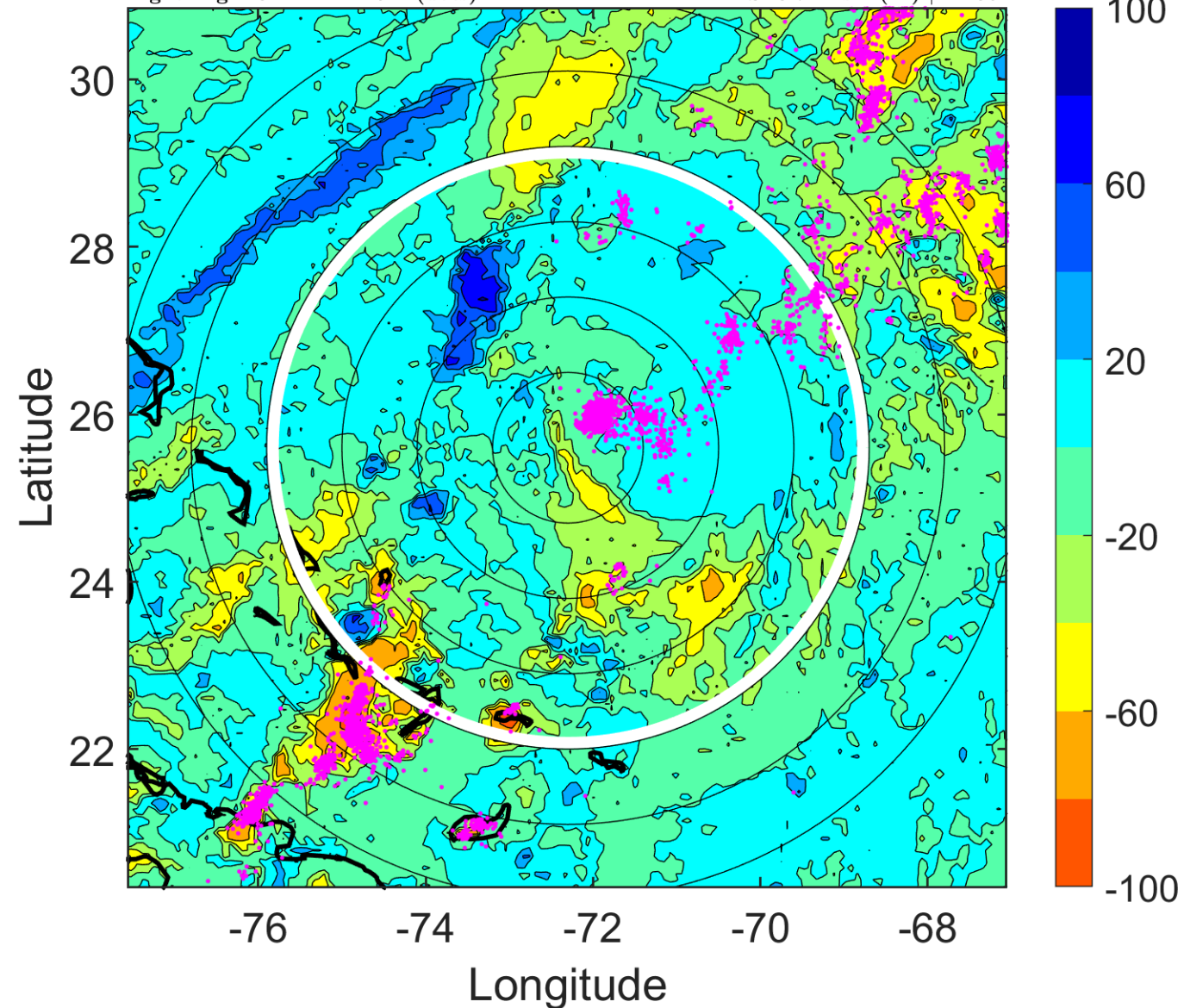
Δ t: 2012101118 (13.2 LT) - 2012101112 (7.2 LT)

Lightning: 13.2 LT \pm 1.5 h (dots)

PT: LLCP | EA: ACT

16L (PATTY) | 35 kt TS

S: 8.7 m s⁻¹ (M) | H: 35°



IR BT & Lightning

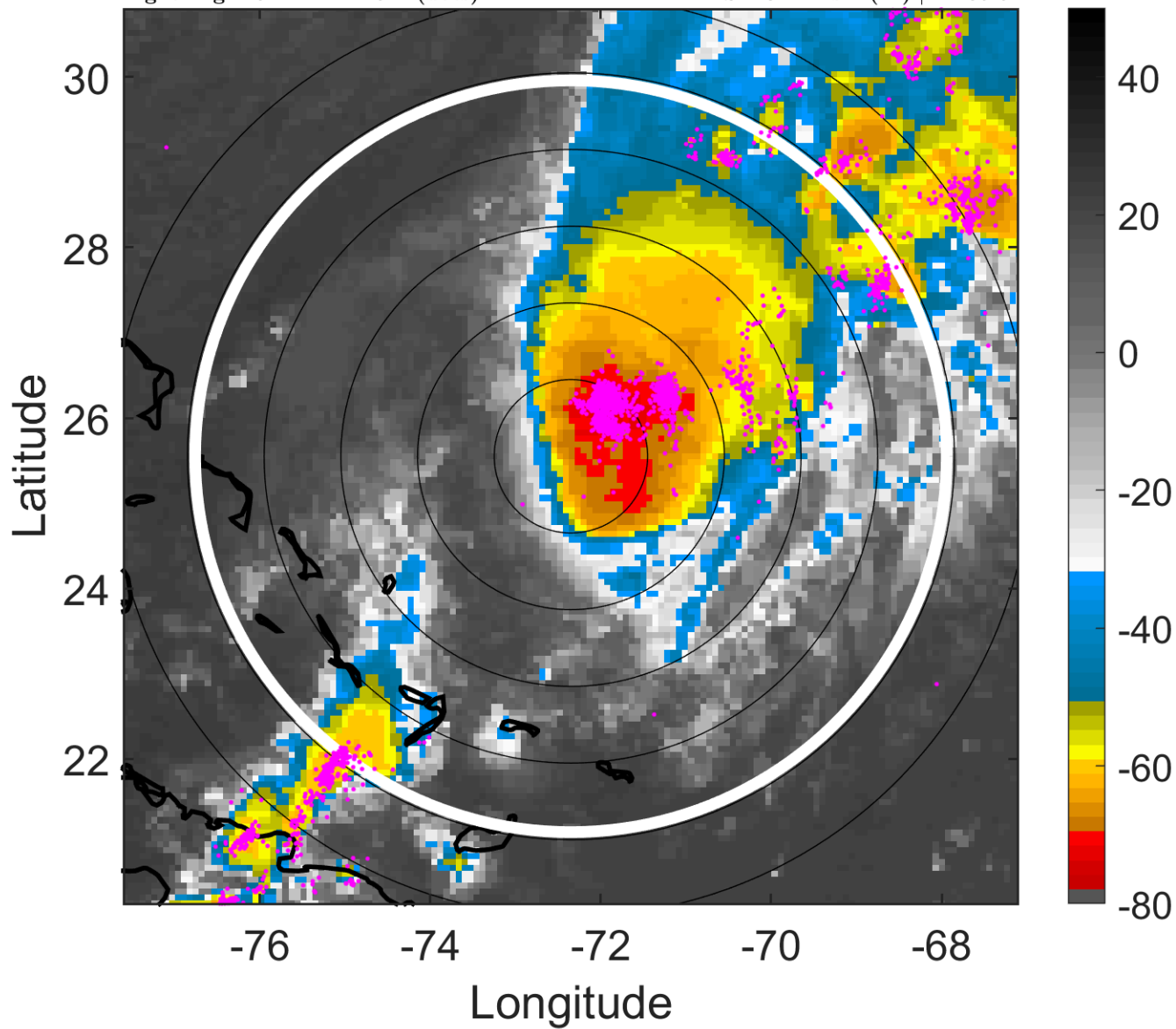
t: 2012101121 (16.2 LT)

Lightning: 16.2 LT \pm 1.5 h (dots)

PT: LLCP | EA: ACT

16L (PATTY) | 37.5 kt TS

S: 10.1 m s⁻¹ (M) | H: 35.5°



6-h IR BT Differences & Lightning

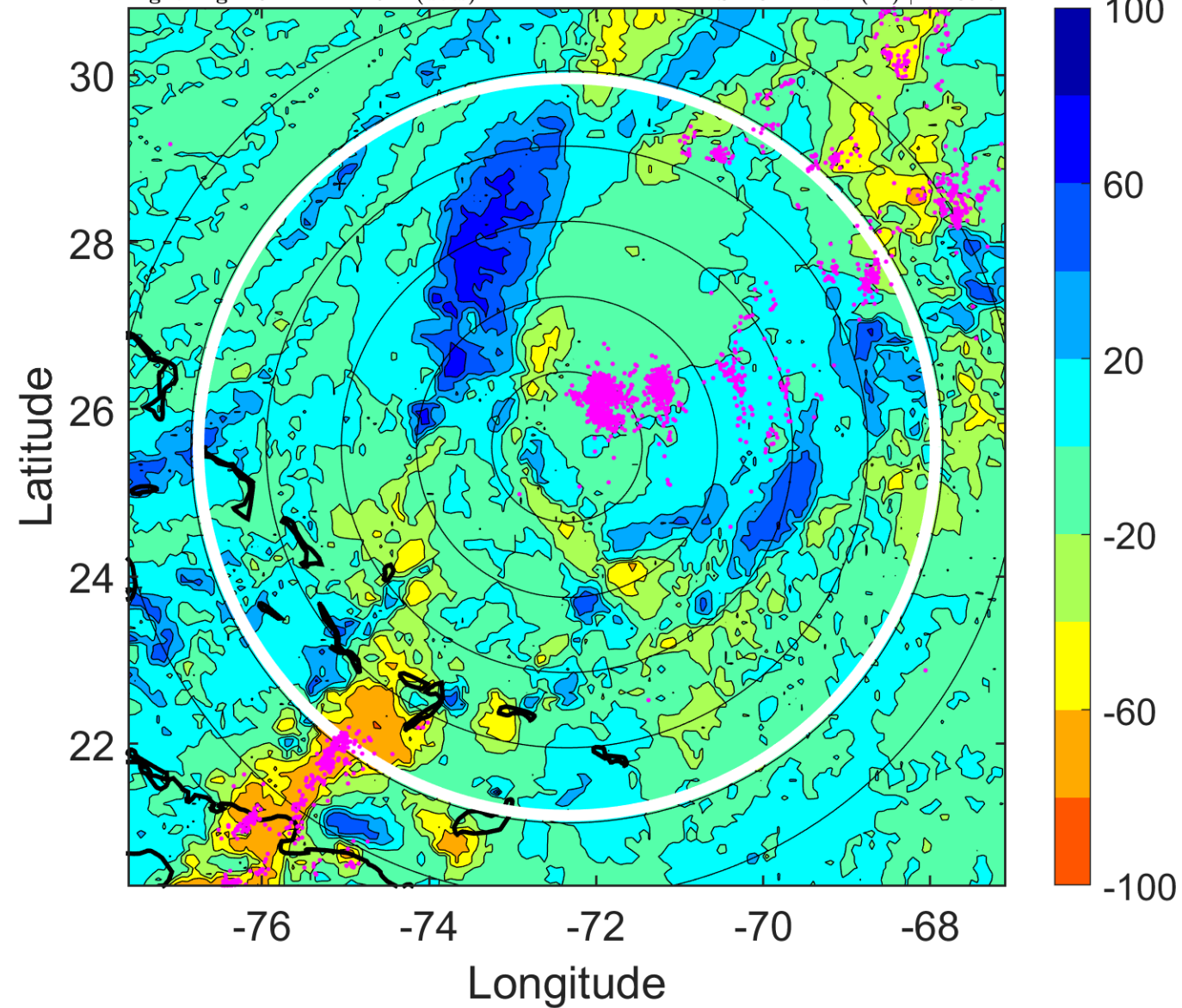
Δ t: 2012101121 (16.2 LT) - 2012101115 (10.2 LT)

Lightning: 16.2 LT \pm 1.5 h (dots)

PT: LLCP | EA: ACT

16L (PATTY) | 37.5 kt TS

S: 10.1 m s⁻¹ (M) | H: 35.5°



IR BT & Lightning

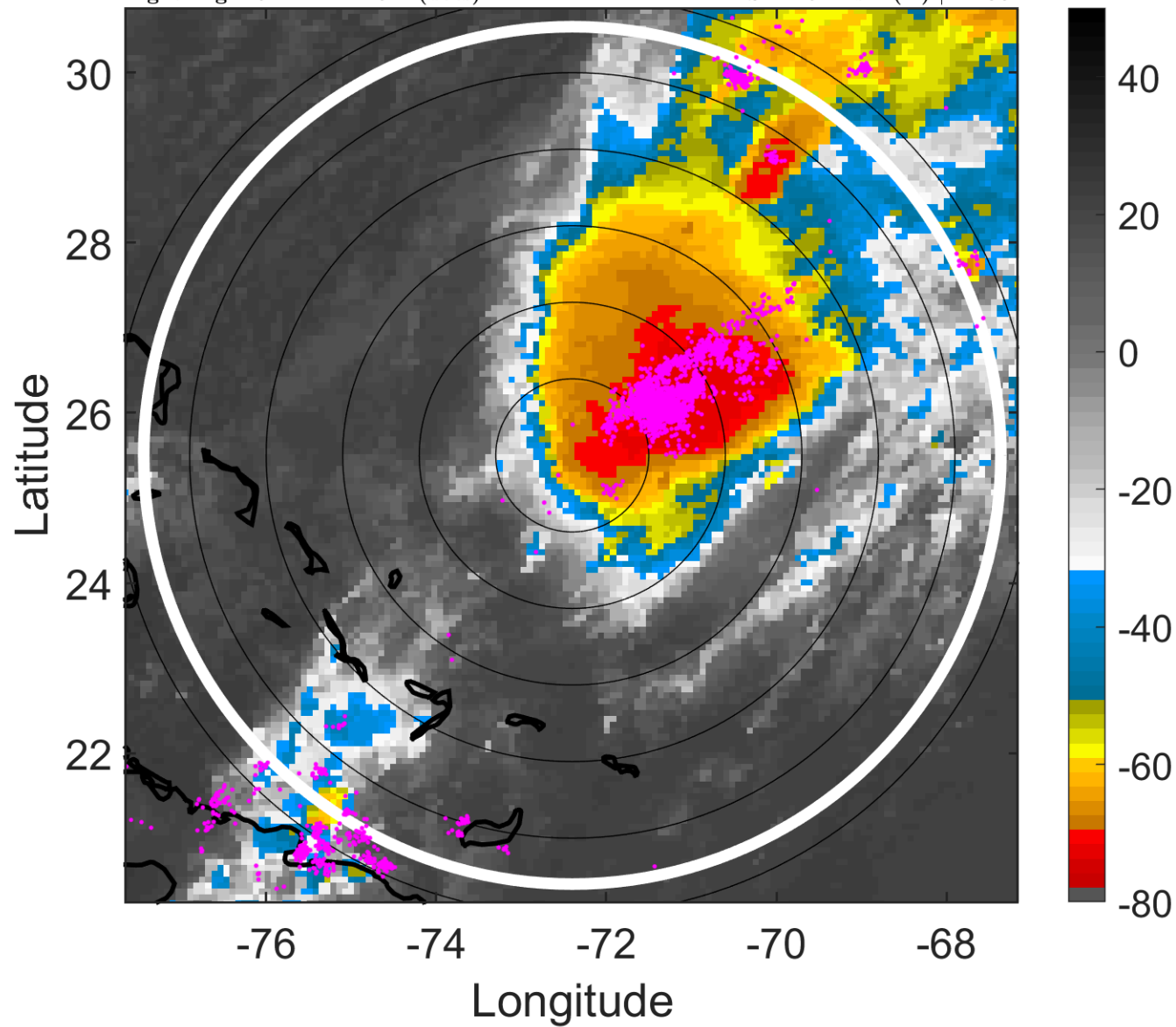
t: 2012101200 (19.2 LT)

Lightning: 19.2 LT \pm 1.5 h (dots)

PT: LLCP | EA: ACT

16L (PATTY) | 40 kt TS

S: 11.5 m s⁻¹ (H) | H: 36°



6-h IR BT Differences & Lightning

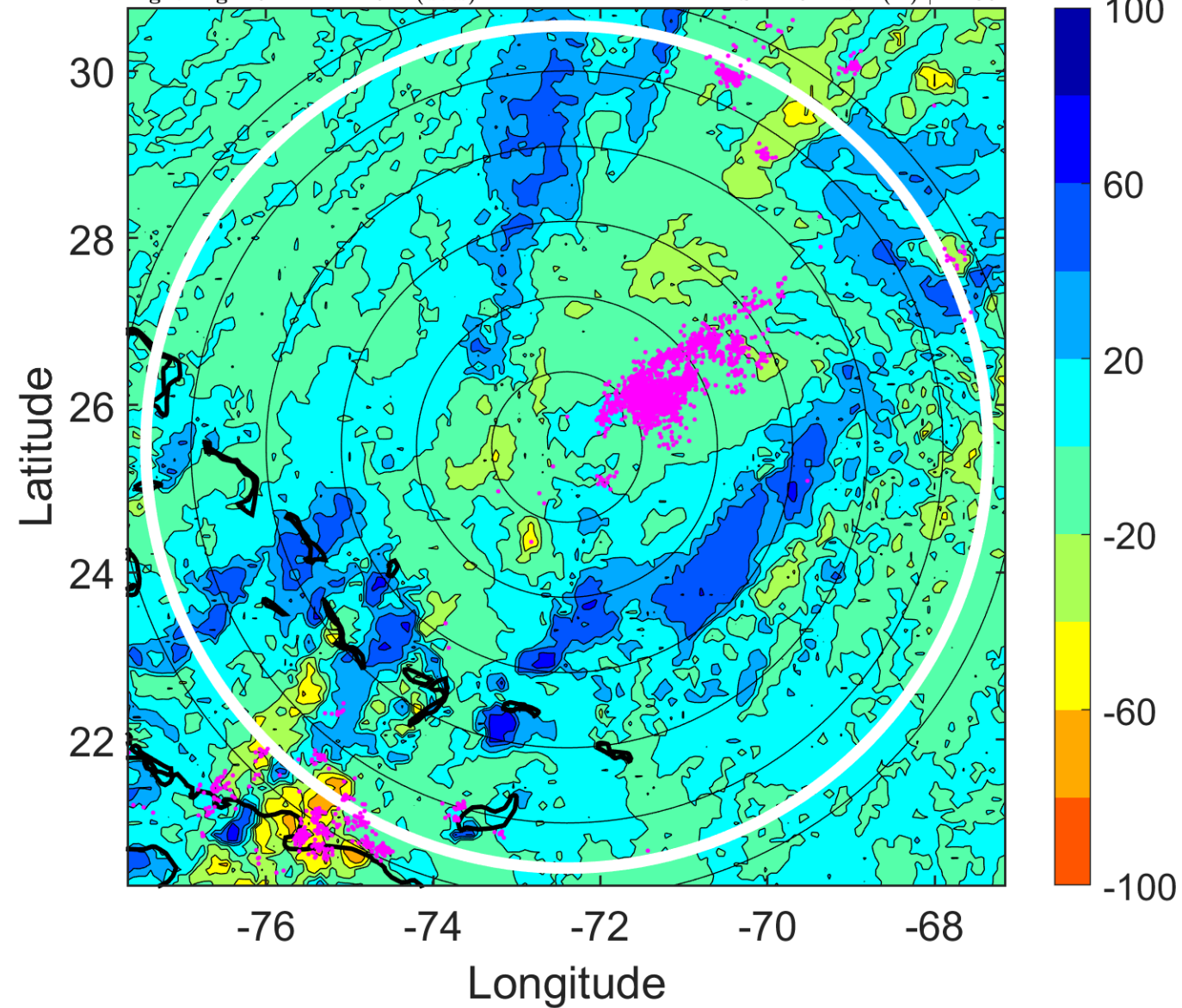
Δ t: 2012101200 (19.2 LT) - 2012101118 (13.2 LT)

Lightning: 19.2 LT \pm 1.5 h (dots)

PT: LLCP | EA: ACT

16L (PATTY) | 40 kt TS

S: 11.5 m s⁻¹ (H) | H: 36°



IR BT & Lightning

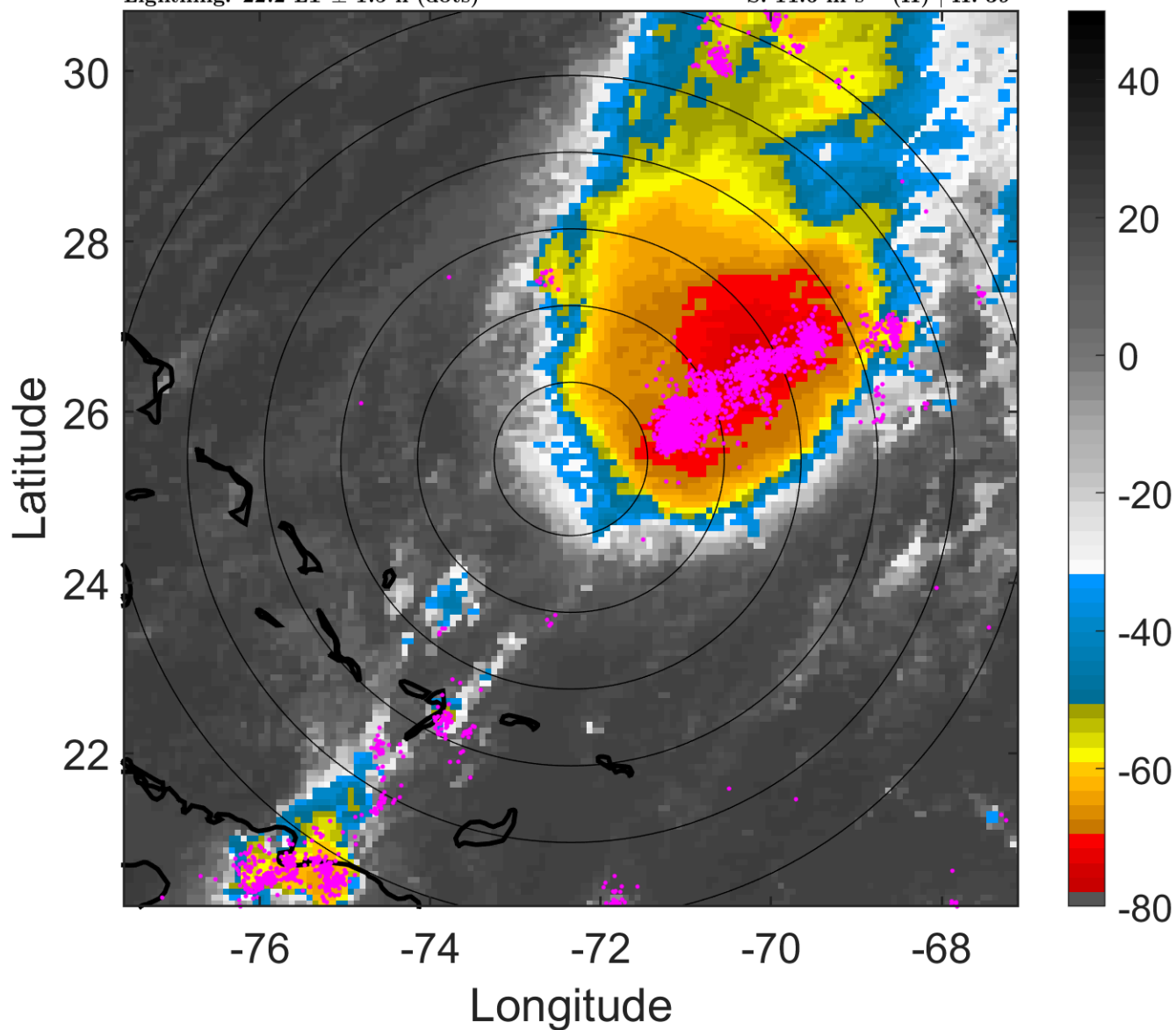
t: 2012101203 (22.2 LT)

Lightning: 22.2 LT \pm 1.5 h (dots)

PT: LLCP | EA: ACT

16L (PATTY) | 40 kt TS

S: 11.6 m s⁻¹ (H) | H: 39°



6-h IR BT Differences & Lightning

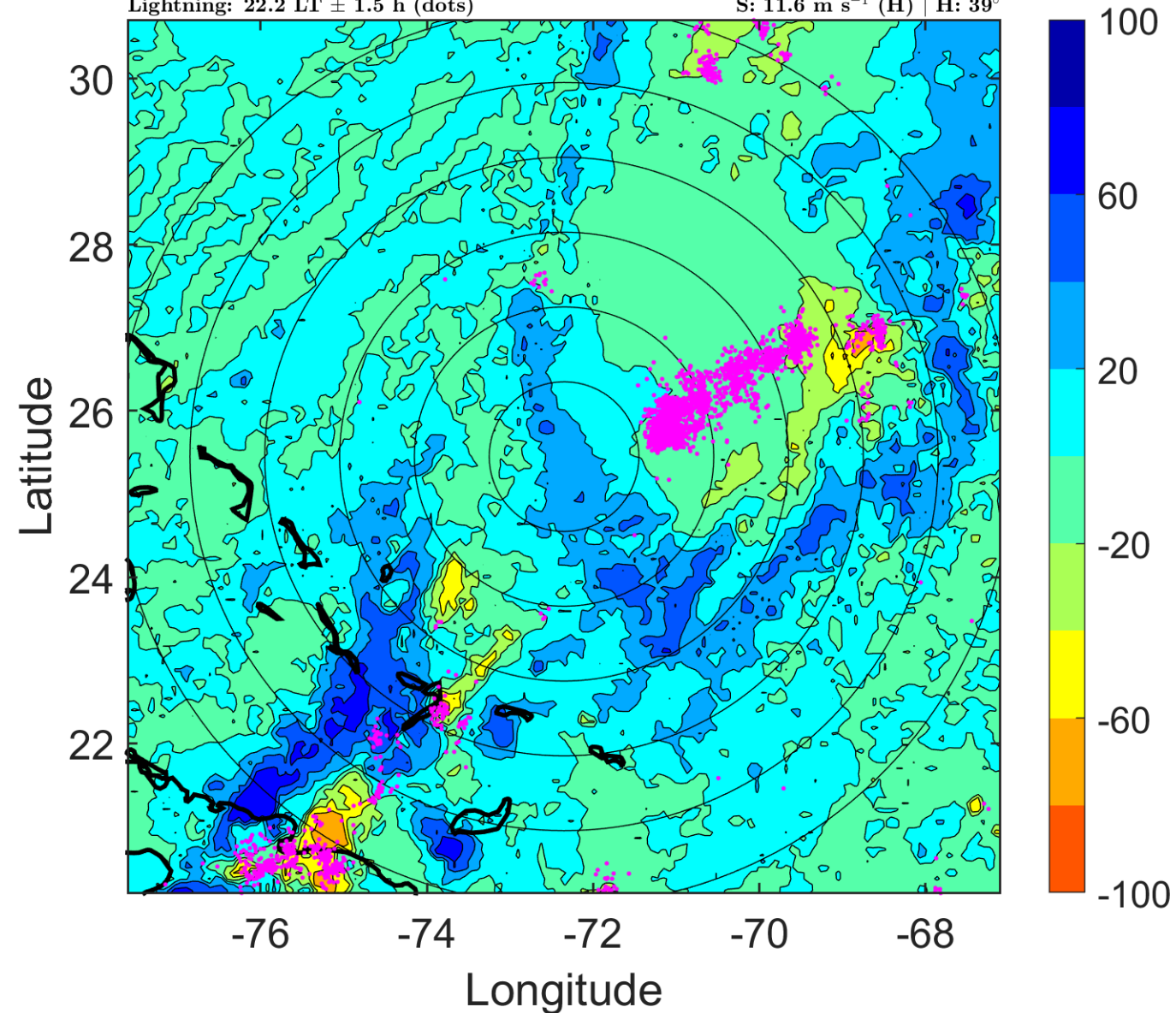
Δ t: 2012101203 (22.2 LT) - 2012101121 (16.2 LT)

Lightning: 22.2 LT \pm 1.5 h (dots)

PT: LLCP | EA: ACT

16L (PATTY) | 40 kt TS

S: 11.6 m s⁻¹ (H) | H: 39°



IR BT & Lightning

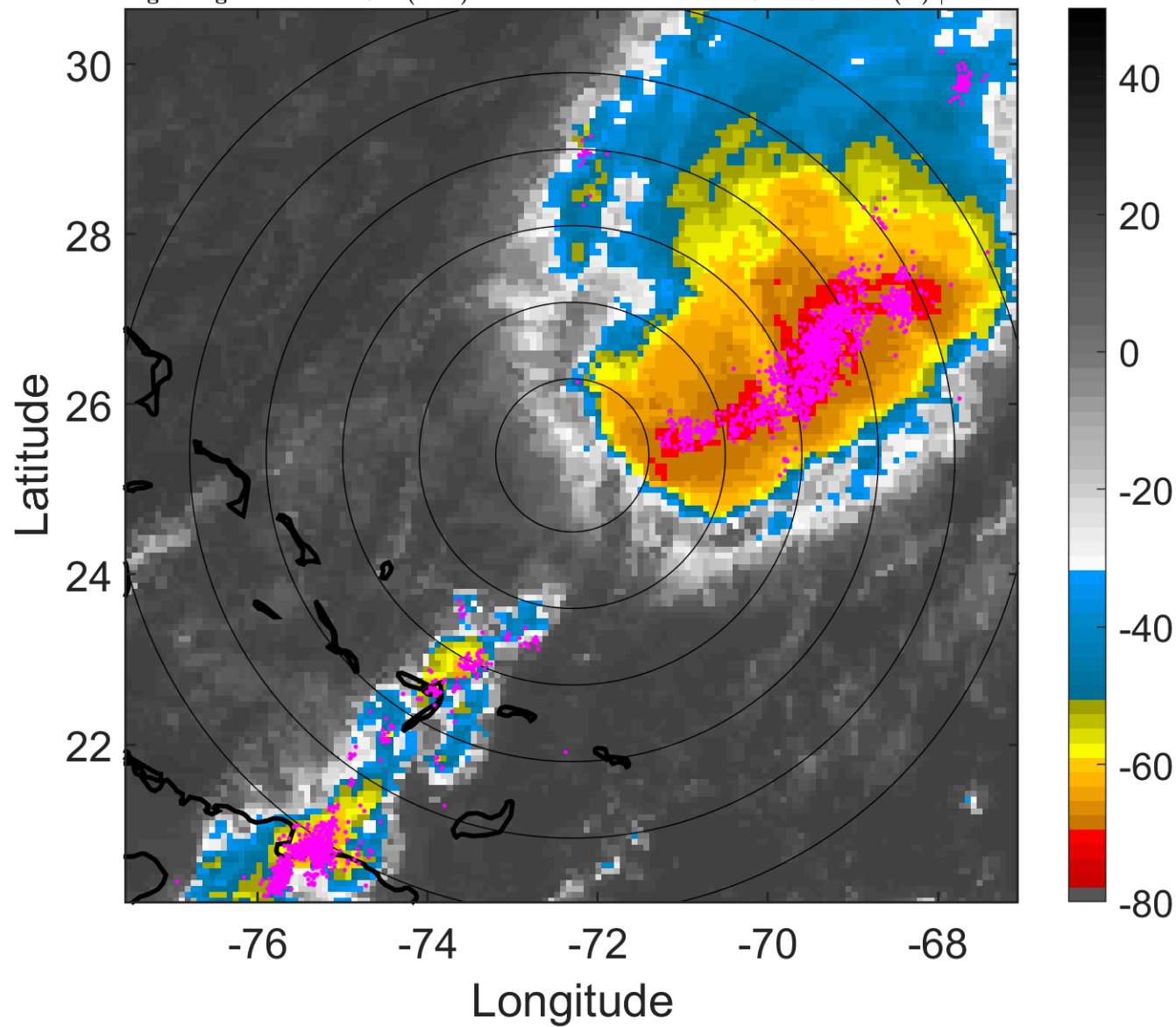
t: 2012101206 (1.2 LT)

Lightning: 1.2 LT \pm 1.5 h (dots)

PT: LLWP | EA: QUASI

16L (PATY) | 40 kt TS

S: 11.7 m s⁻¹ (H) | H: 42°



6-h IR BT Differences & Lightning

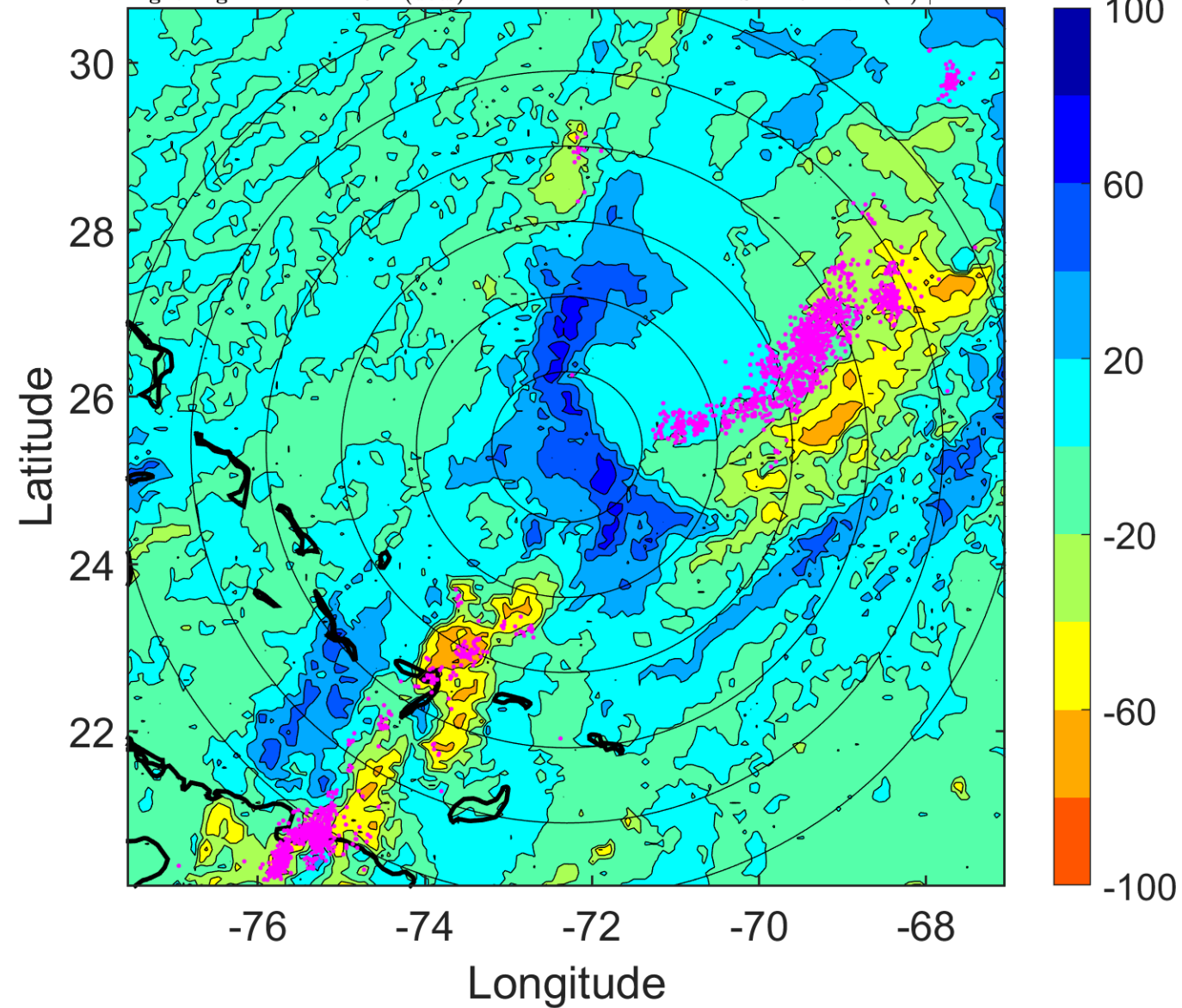
Δ t: 2012101206 (1.2 LT) - 2012101200 (19.2 LT)

Lightning: 1.2 LT \pm 1.5 h (dots)

PT: LLWP | EA: QUASI

16L (PATY) | 40 kt TS

S: 11.7 m s⁻¹ (H) | H: 42°



IR BT & Lightning

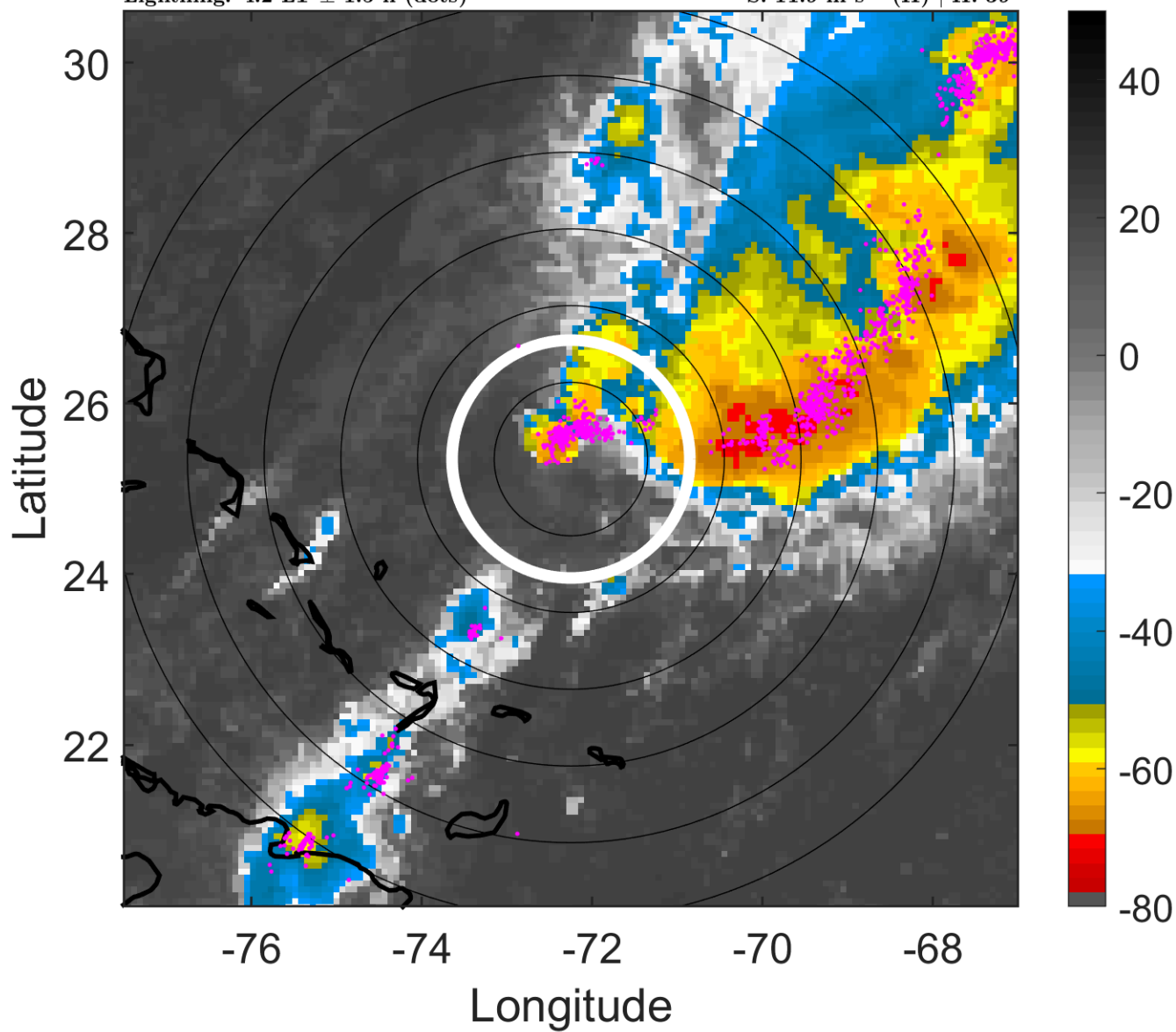
t: 2012101209 (4.2 LT)

Lightning: 4.2 LT \pm 1.5 h (dots)

PT: LLWP | EA: QUASI

16L (PATY) | 40 kt TS

S: 11.9 m s⁻¹ (H) | H: 39°



6-h IR BT Differences & Lightning

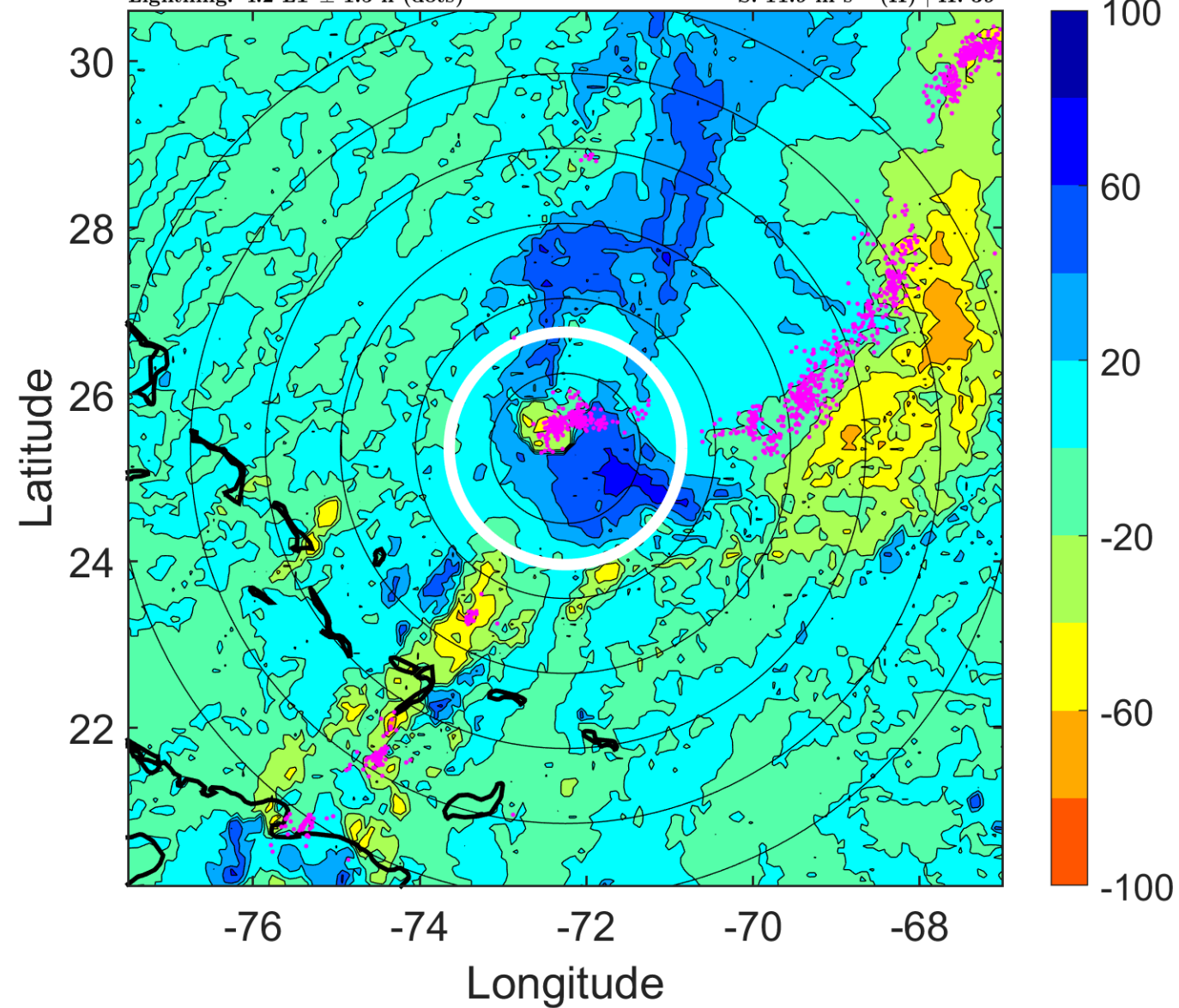
Δ t: 2012101209 (4.2 LT) - 2012101203 (22.2 LT)

Lightning: 4.2 LT \pm 1.5 h (dots)

PT: LLWP | EA: QUASI

16L (PATY) | 40 kt TS

S: 11.9 m s⁻¹ (H) | H: 39°



IR BT & Lightning

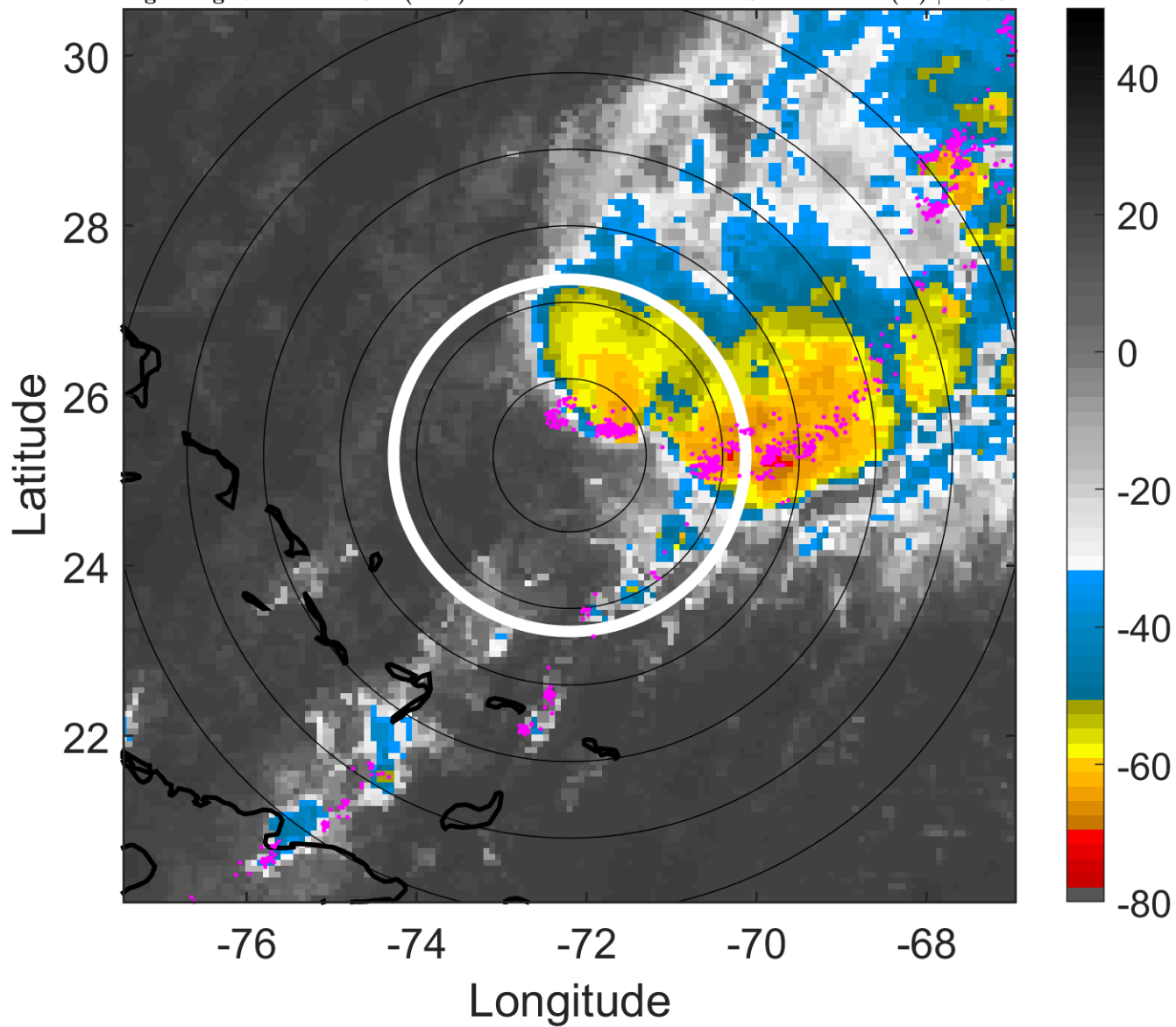
t: 2012101212 (7.2 LT)

Lightning: 7.2 LT \pm 1.5 h (dots)

PT: LLWP | EA: QUASI

16L (PATY) | 40 kt TS

S: 12.1 m s⁻¹ (H) | H: 36°



6-h IR BT Differences & Lightning

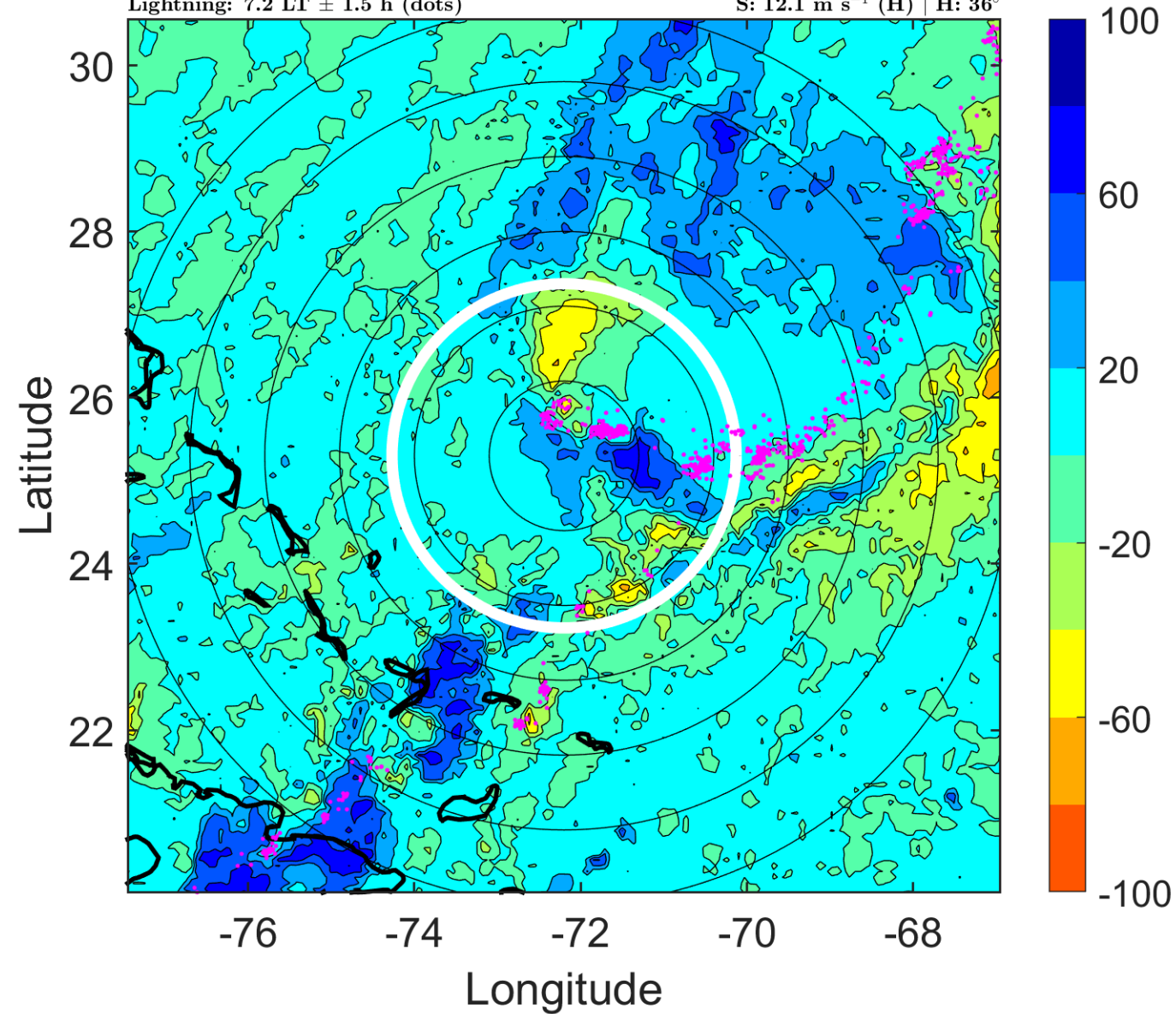
Δ t: 2012101212 (7.2 LT) - 2012101206 (1.2 LT)

Lightning: 7.2 LT \pm 1.5 h (dots)

PT: LLWP | EA: QUASI

16L (PATY) | 40 kt TS

S: 12.1 m s⁻¹ (H) | H: 36°



IR BT & Lightning

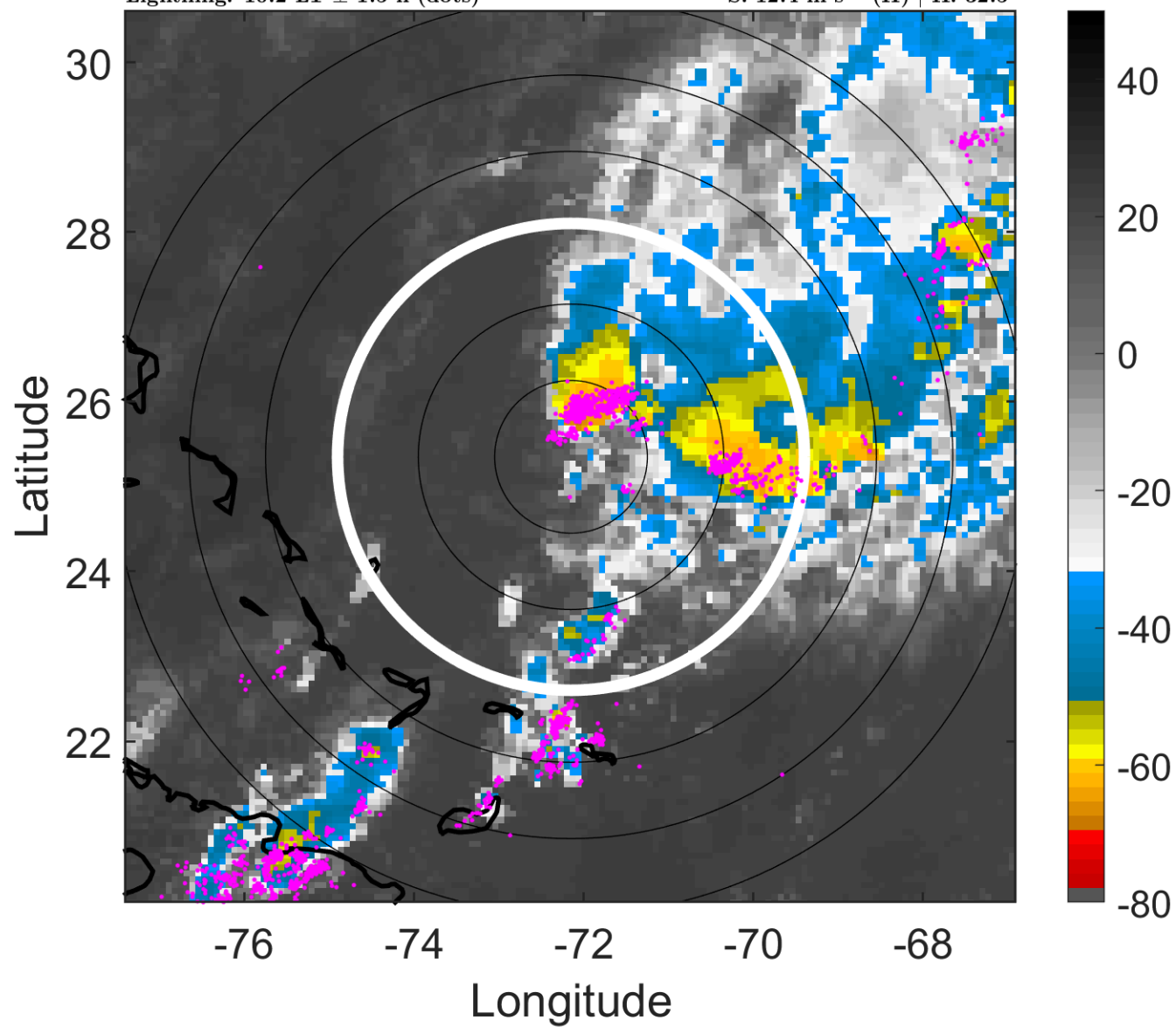
t: 2012101215 (10.2 LT)

Lightning: 10.2 LT \pm 1.5 h (dots)

PT: LLWP | EA: QUASI

16L (PATTY) | 37.5 kt TS

S: 12.4 m s⁻¹ (H) | H: 32.5°



6-h IR BT Differences & Lightning

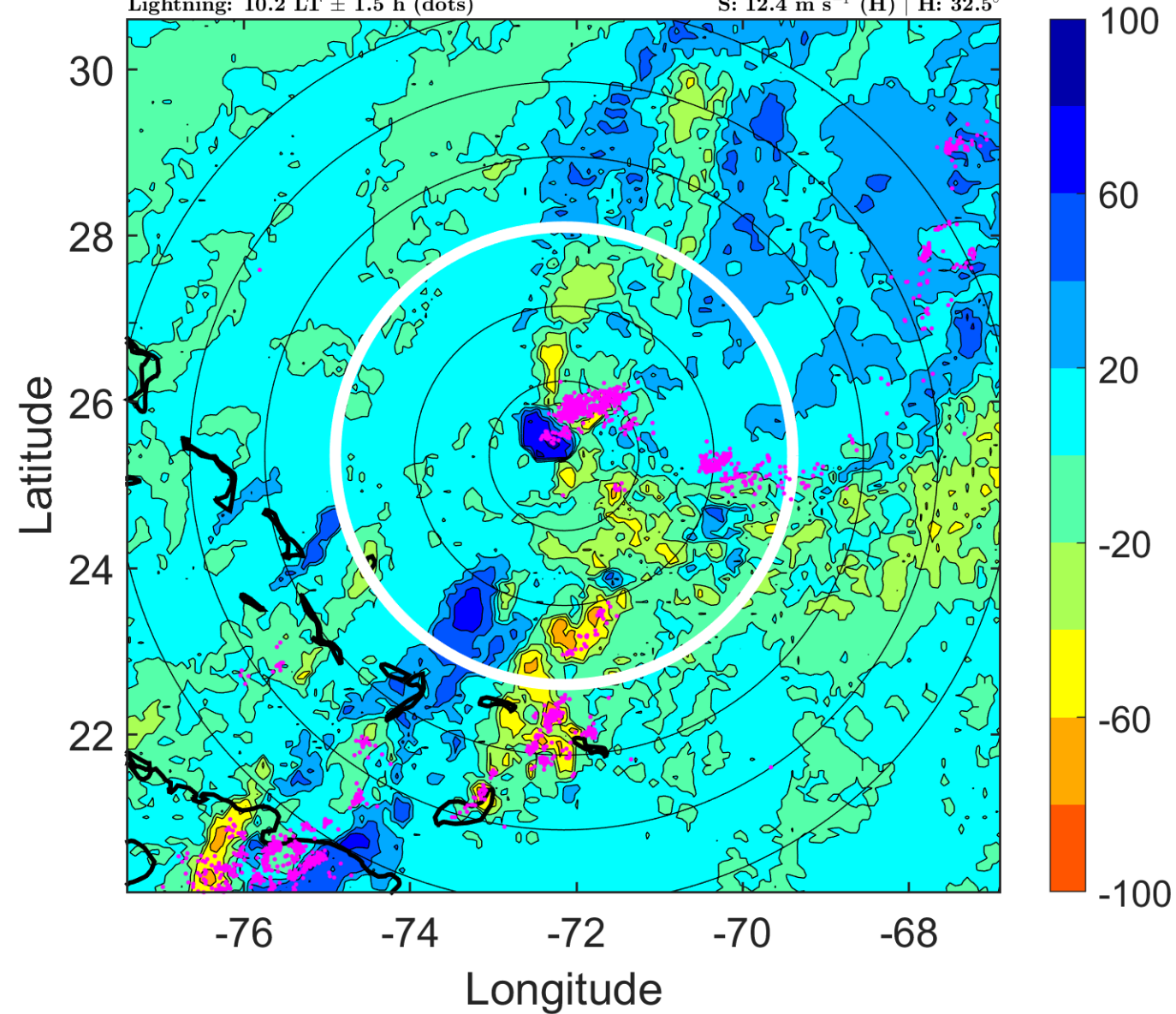
Δ t: 2012101215 (10.2 LT) - 2012101209 (4.2 LT)

Lightning: 10.2 LT \pm 1.5 h (dots)

PT: LLWP | EA: QUASI

16L (PATTY) | 37.5 kt TS

S: 12.4 m s⁻¹ (H) | H: 32.5°



IR BT & Lightning

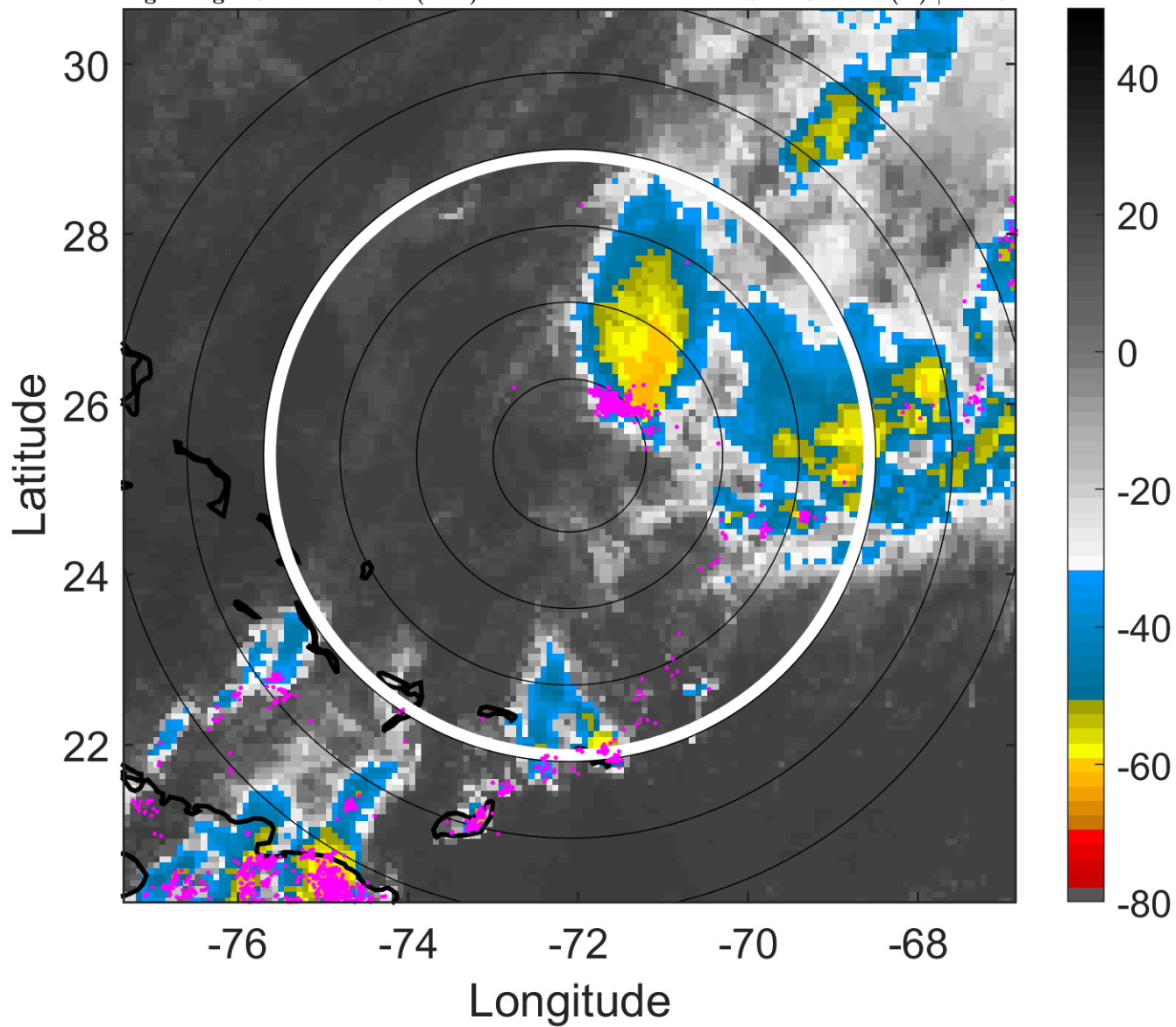
t: 2012101218 (13.2 LT)

Lightning: 13.2 LT \pm 1.5 h (dots)

PT: LLWP | EA: QUASI

16L (PATTY) | 35 kt TS

S: 12.8 m s⁻¹ (H) | H: 29°



6-h IR BT Differences & Lightning

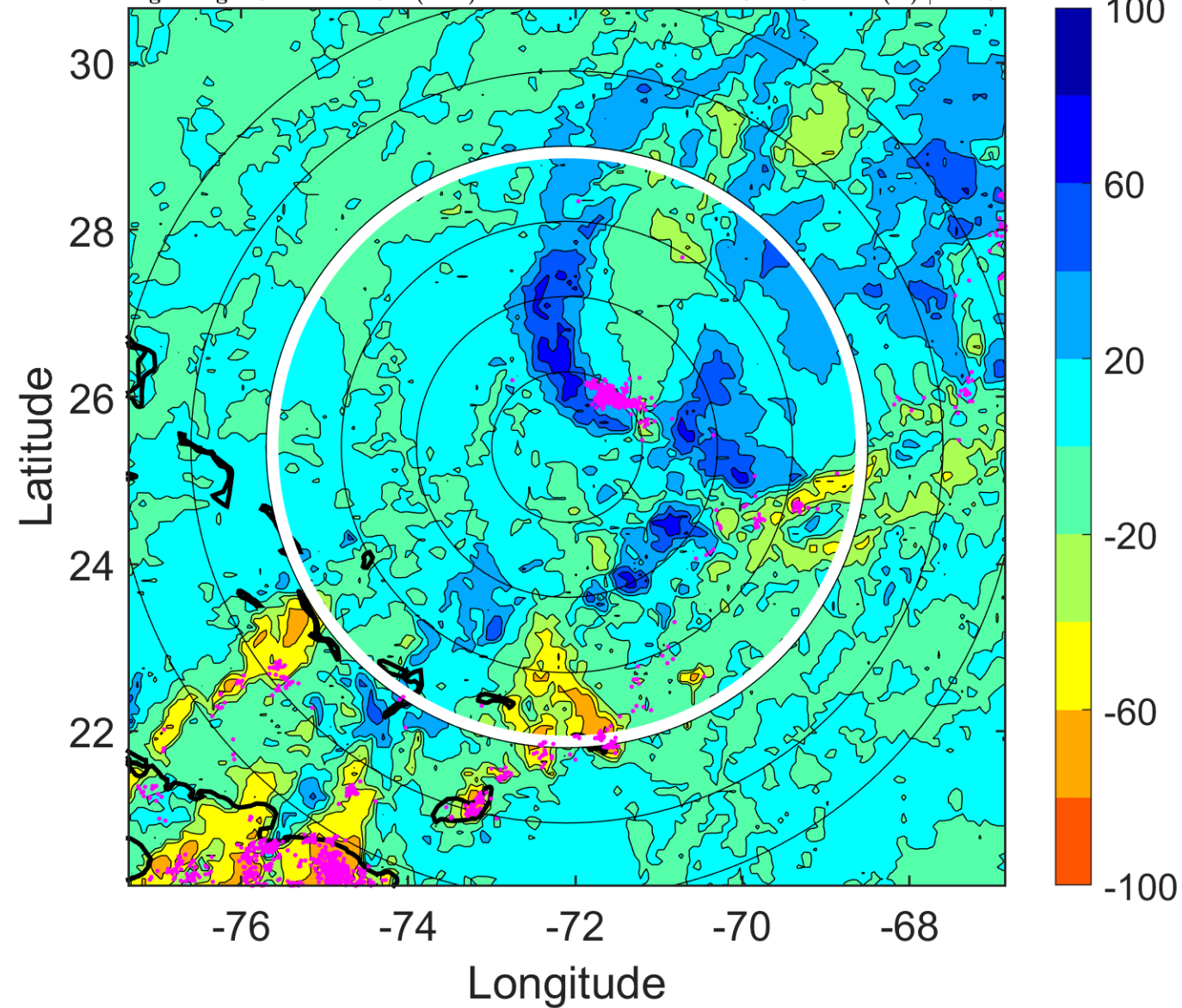
Δ t: 2012101218 (13.2 LT) - 2012101212 (7.2 LT)

Lightning: 13.2 LT \pm 1.5 h (dots)

PT: LLWP | EA: QUASI

16L (PATTY) | 35 kt TS

S: 12.8 m s⁻¹ (H) | H: 29°



IR BT & Lightning

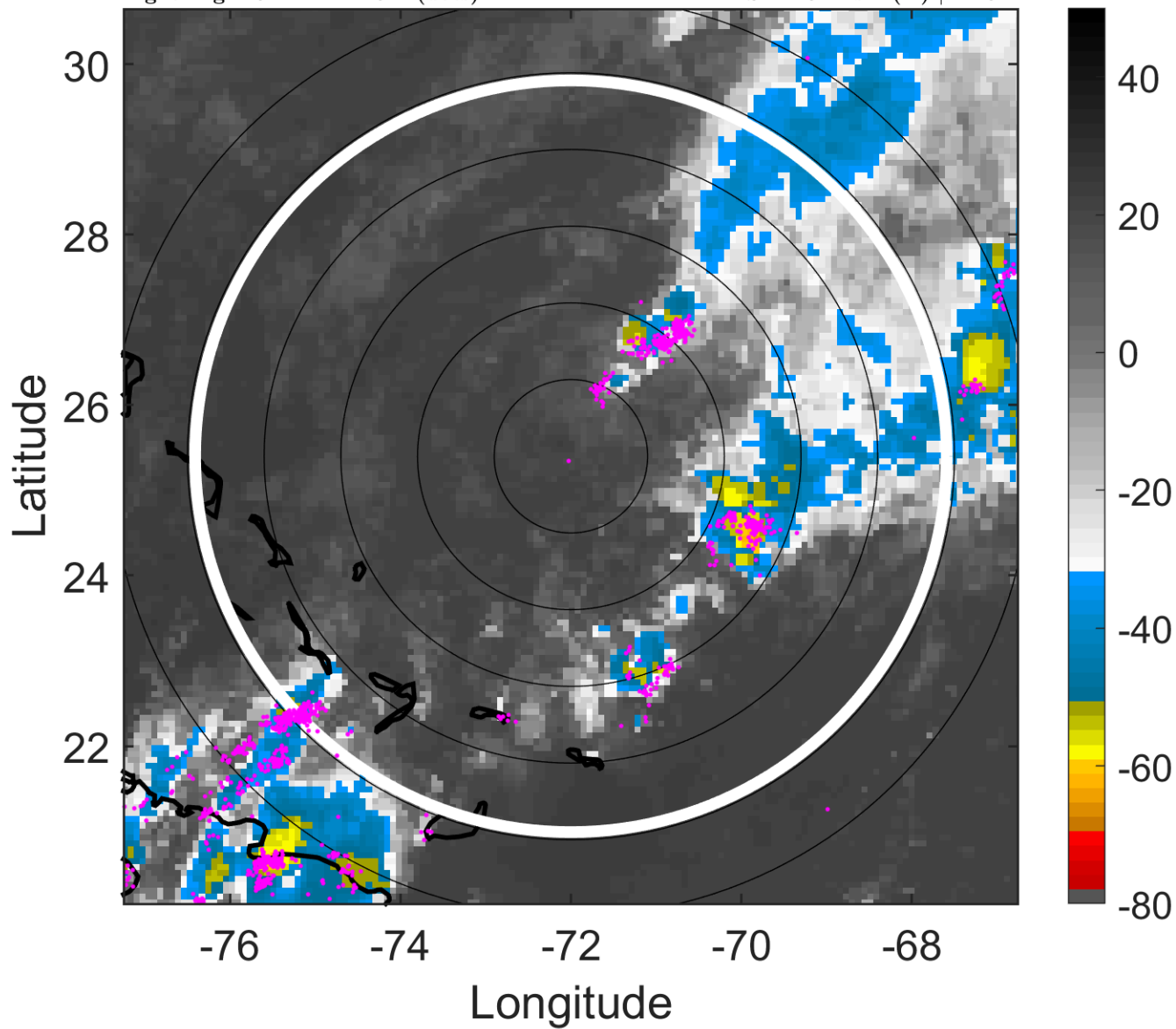
t: 2012101221 (16.2 LT)

Lightning: 16.2 LT \pm 1.5 h (dots)

PT: LLWP | EA: QUASI

16L (PATY) | 35 kt TS

S: 14.3 m s⁻¹ (H) | H: 31°



6-h IR BT Differences & Lightning

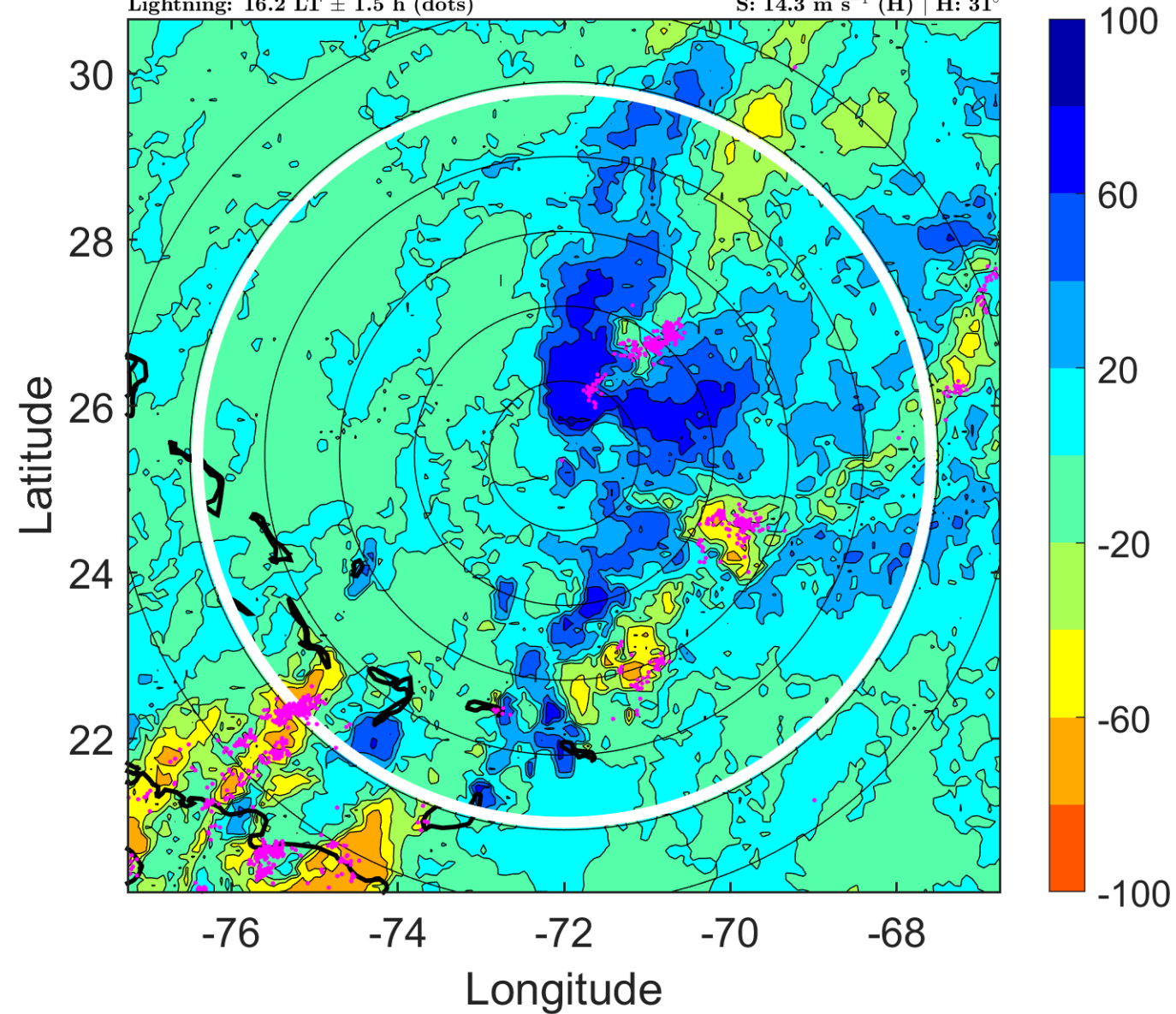
Δ t: 2012101221 (16.2 LT) - 2012101215 (10.2 LT)

Lightning: 16.2 LT \pm 1.5 h (dots)

PT: LLWP | EA: QUASI

16L (PATY) | 35 kt TS

S: 14.3 m s⁻¹ (H) | H: 31°



IR BT & Lightning

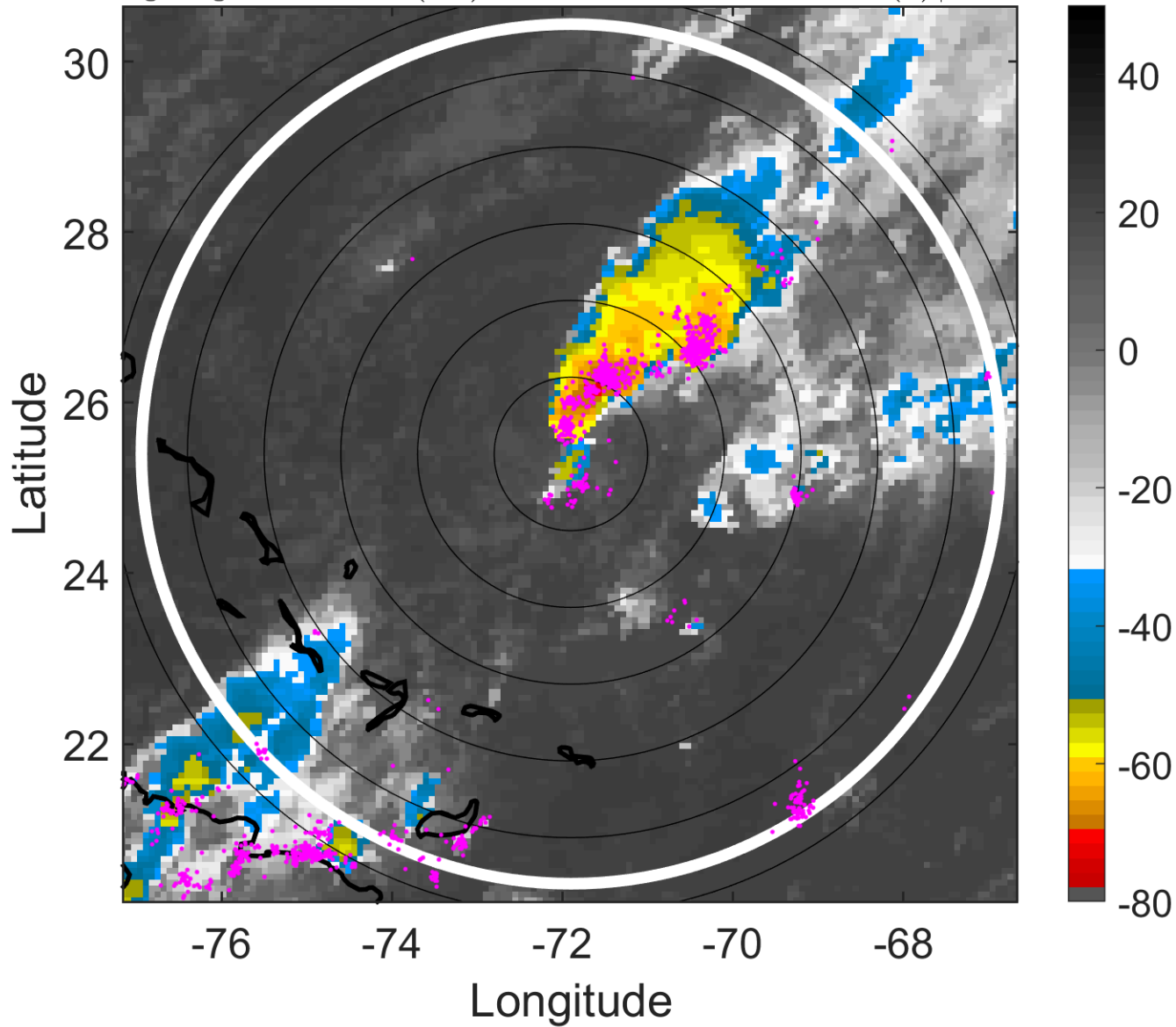
t: 2012101300 (19.2 LT)

Lightning: 19.2 LT \pm 1.5 h (dots)

PT: LLWP | EA: QUASI

16L (PATTY) | 35 kt TS

S: 15.8 m s⁻¹ (H) | H: 33°



6-h IR BT Differences & Lightning

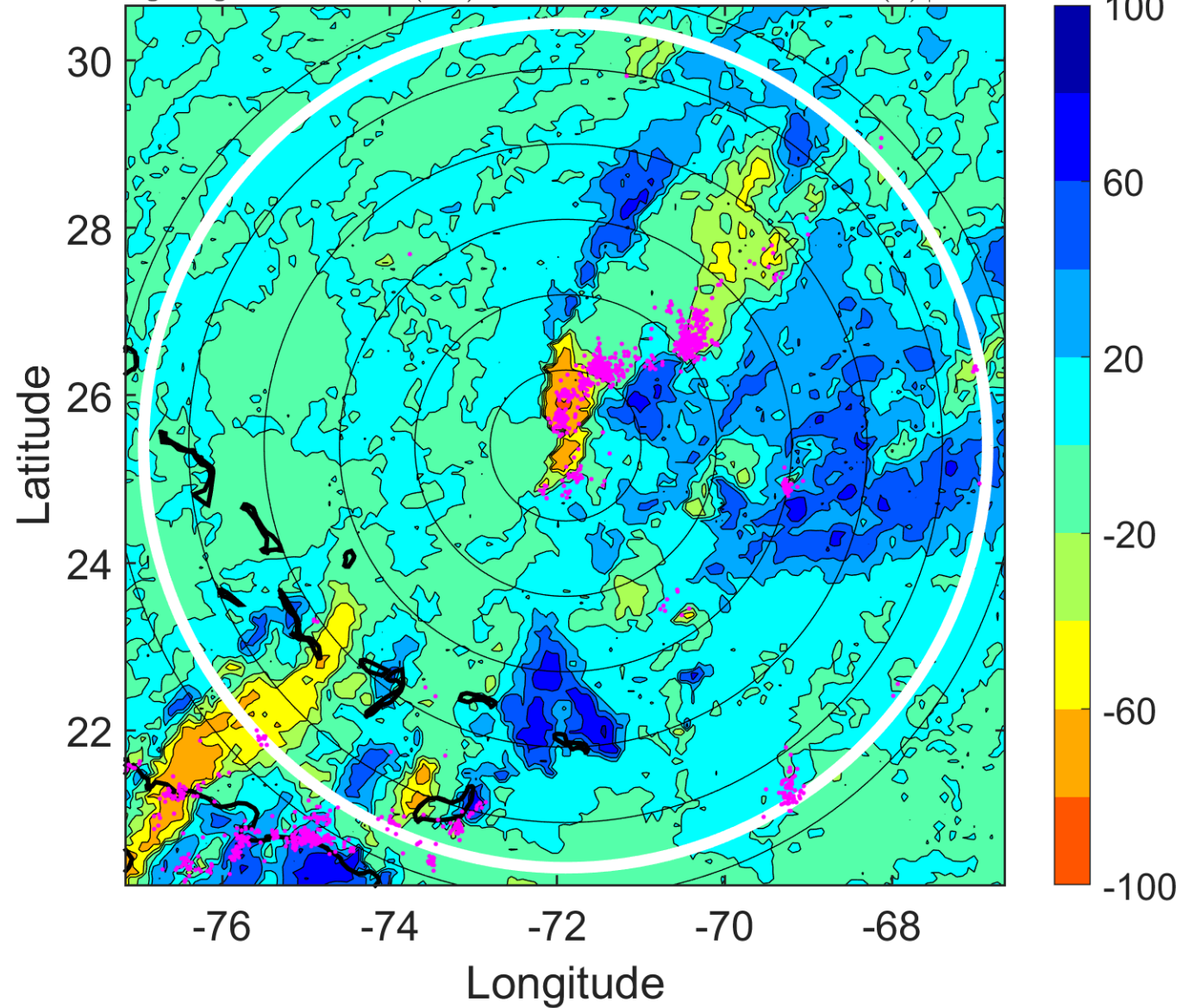
Δ t: 2012101300 (19.2 LT) - 2012101218 (13.2 LT)

Lightning: 19.2 LT \pm 1.5 h (dots)

PT: LLWP | EA: QUASI

16L (PATTY) | 35 kt TS

S: 15.8 m s⁻¹ (H) | H: 33°



IR BT & Lightning

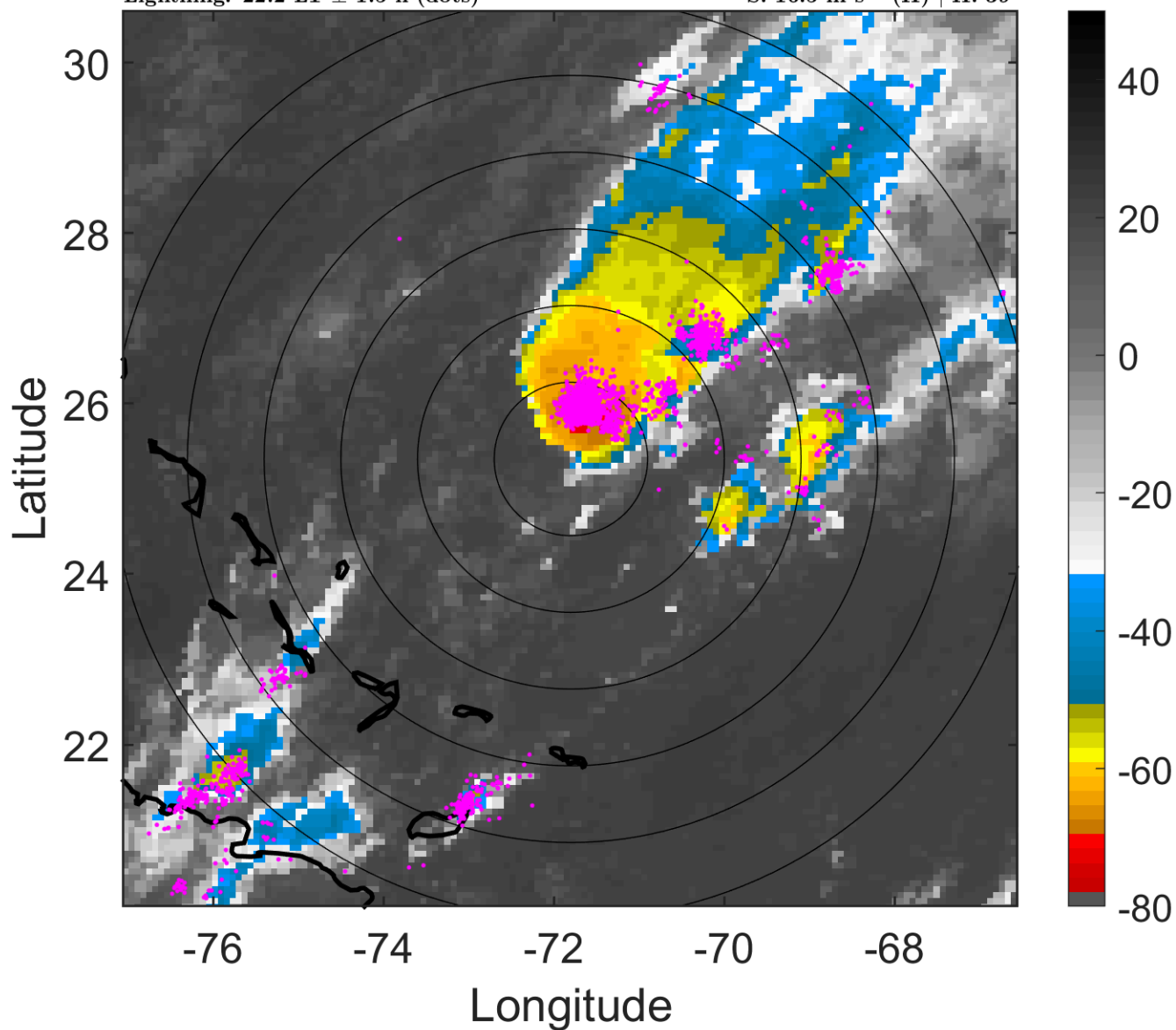
t: 2012101303 (22.2 LT)

Lightning: 22.2 LT \pm 1.5 h (dots)

PT: LLWP | EA: QUASI

16L (PATTY) | 32.5 kt TD

S: 16.5 m s⁻¹ (H) | H: 39°



6-h IR BT Differences & Lightning

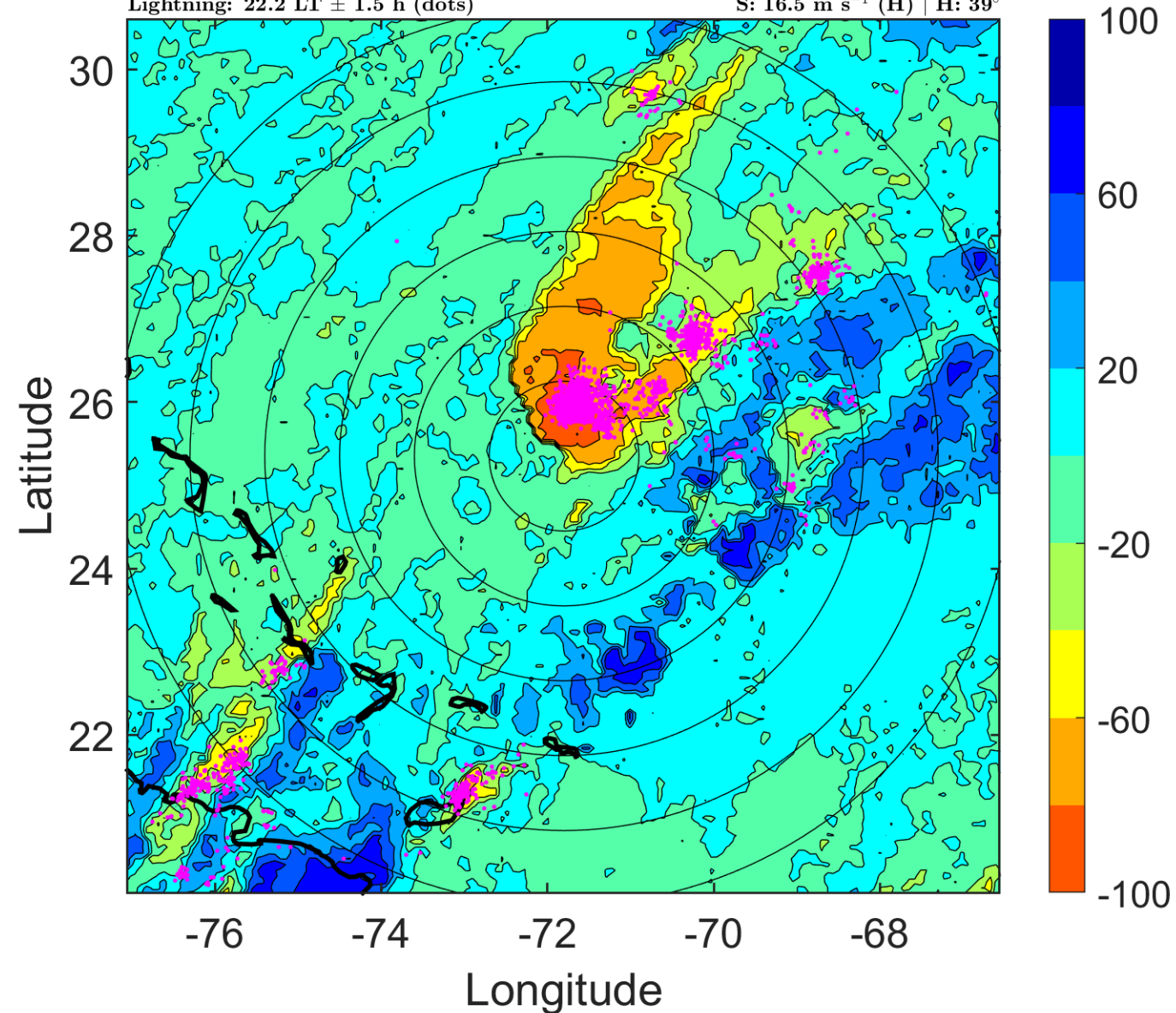
Δ t: 2012101303 (22.2 LT) - 2012101221 (16.2 LT)

Lightning: 22.2 LT \pm 1.5 h (dots)

PT: LLWP | EA: QUASI

16L (PATTY) | 32.5 kt TD

S: 16.5 m s⁻¹ (H) | H: 39°



IR BT & Lightning

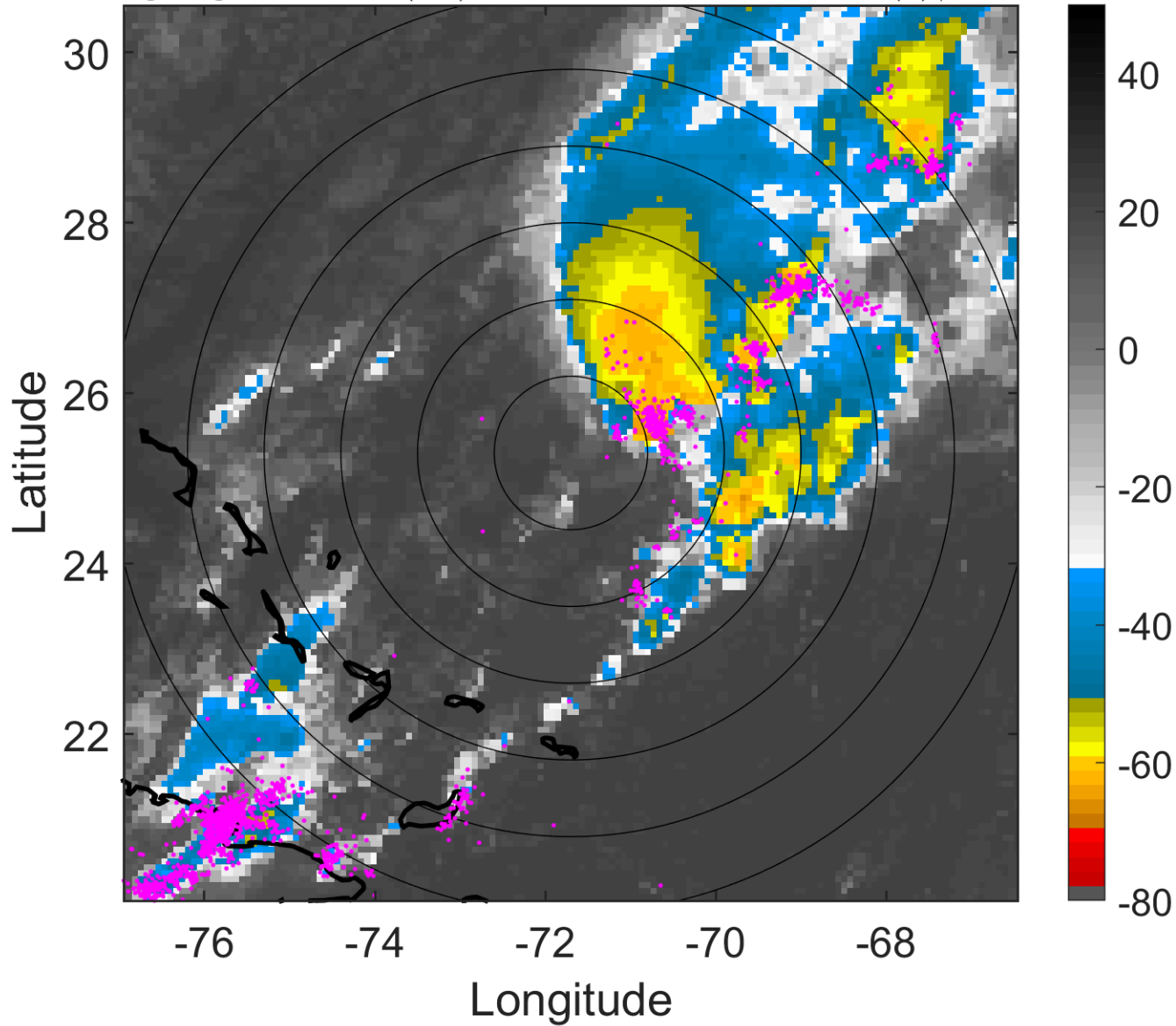
t: 2012101306 (1.2 LT)

Lightning: 1.2 LT \pm 1.5 h (dots)

PT: NP | EA: INACT

16L (PATTY) | 30 kt TD

S: 17.2 m s⁻¹ (H) | H: 45°



6-h IR BT Differences & Lightning

Δ t: 2012101306 (1.2 LT) - 2012101300 (19.2 LT)

Lightning: 1.2 LT \pm 1.5 h (dots)

PT: NP | EA: INACT

16L (PATTY) | 30 kt TD

S: 17.2 m s⁻¹ (H) | H: 45°

