

IR BT & Lightning

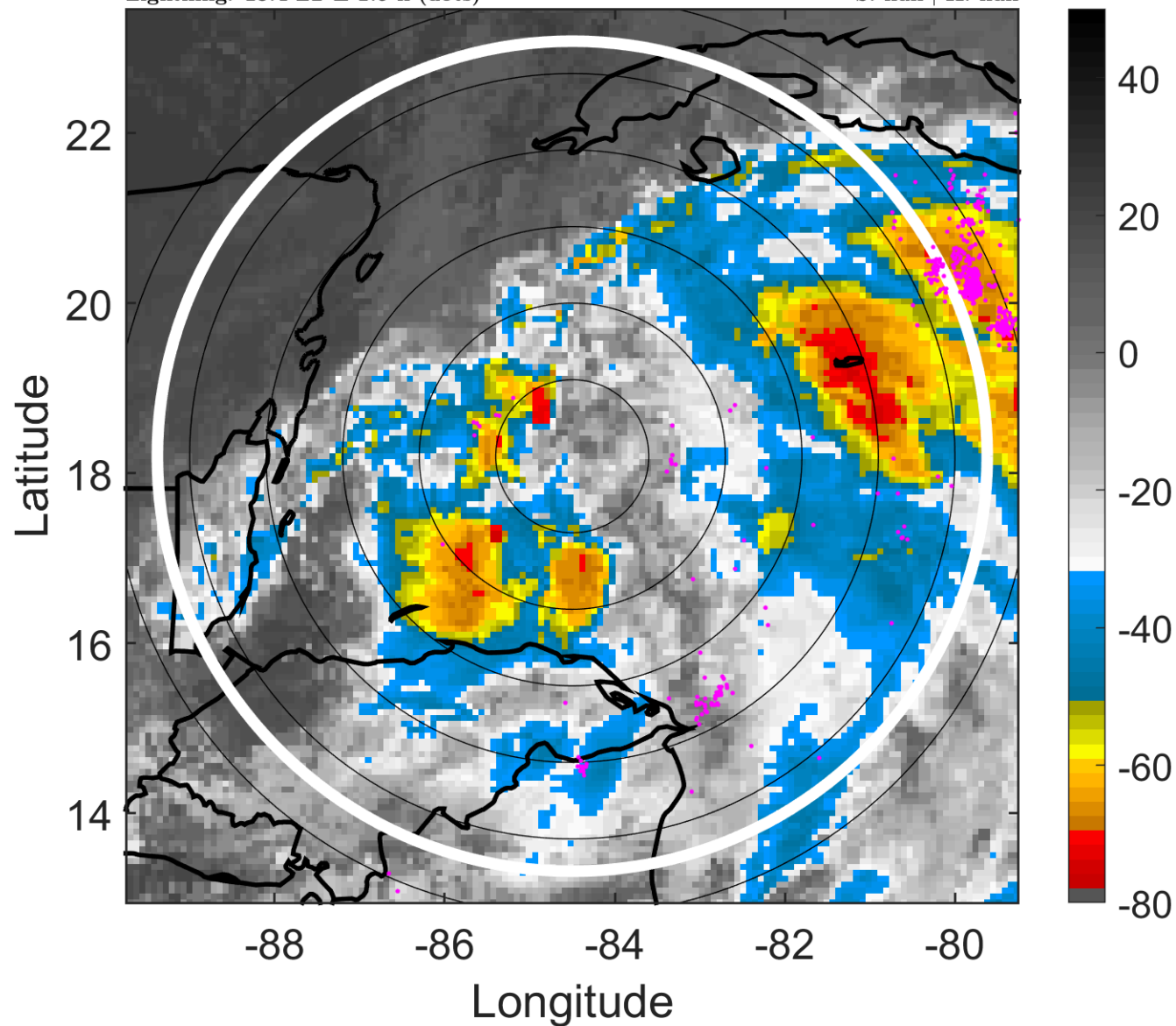
t: 2017102800 (18.4 LT)

Lightning: 18.4 LT \pm 1.5 h (dots)

PT: SLWP | EA: QUASI

18L (PHILIPPE) | 30 kt DB

S: null | H: null



6-h IR BT Differences & Lightning

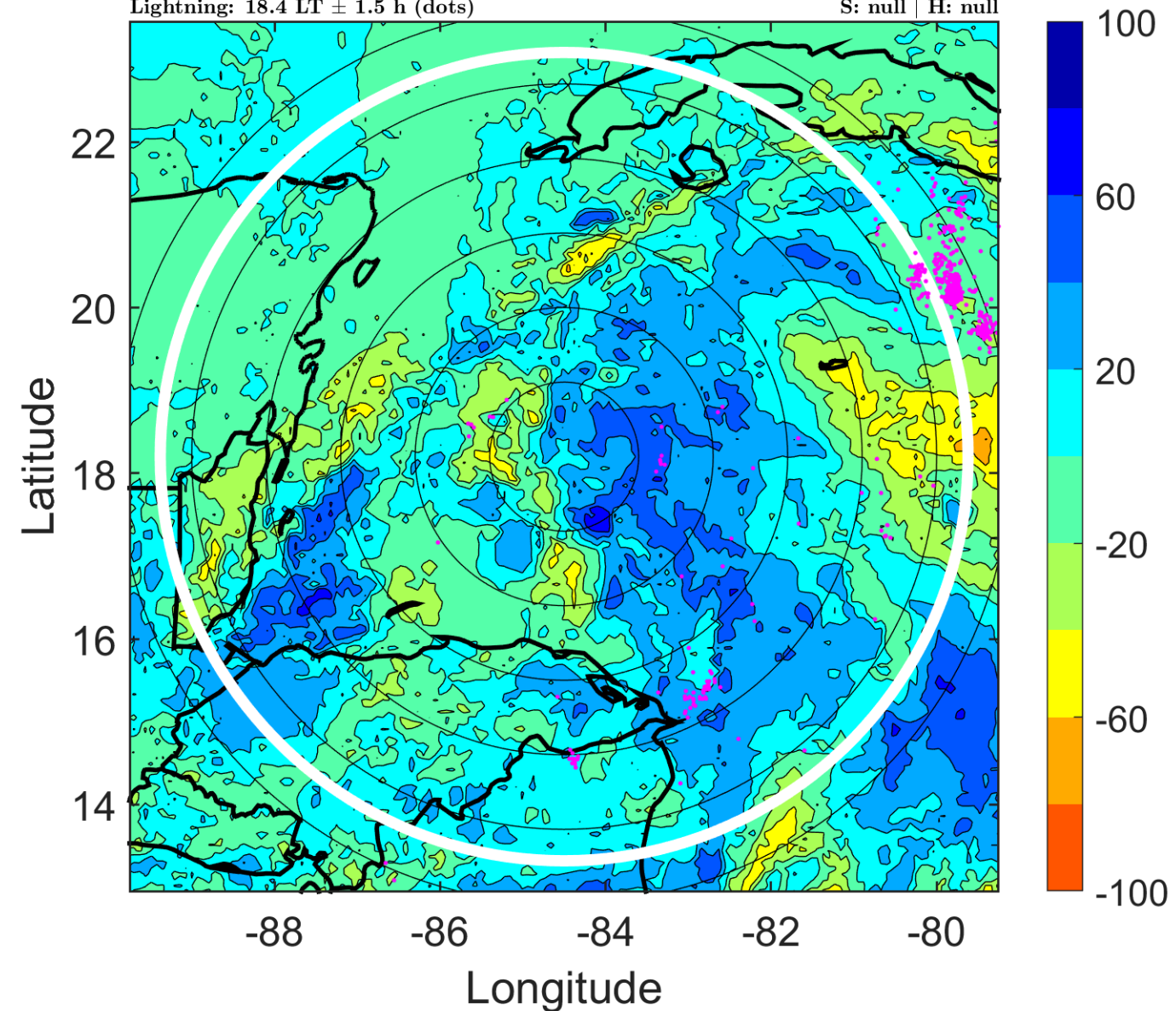
Δ t: 2017102800 (18.4 LT) - 2017102718 (12.4 LT)

Lightning: 18.4 LT \pm 1.5 h (dots)

PT: SLWP | EA: QUASI

18L (PHILIPPE) | 30 kt DB

S: null | H: null



IR BT & Lightning

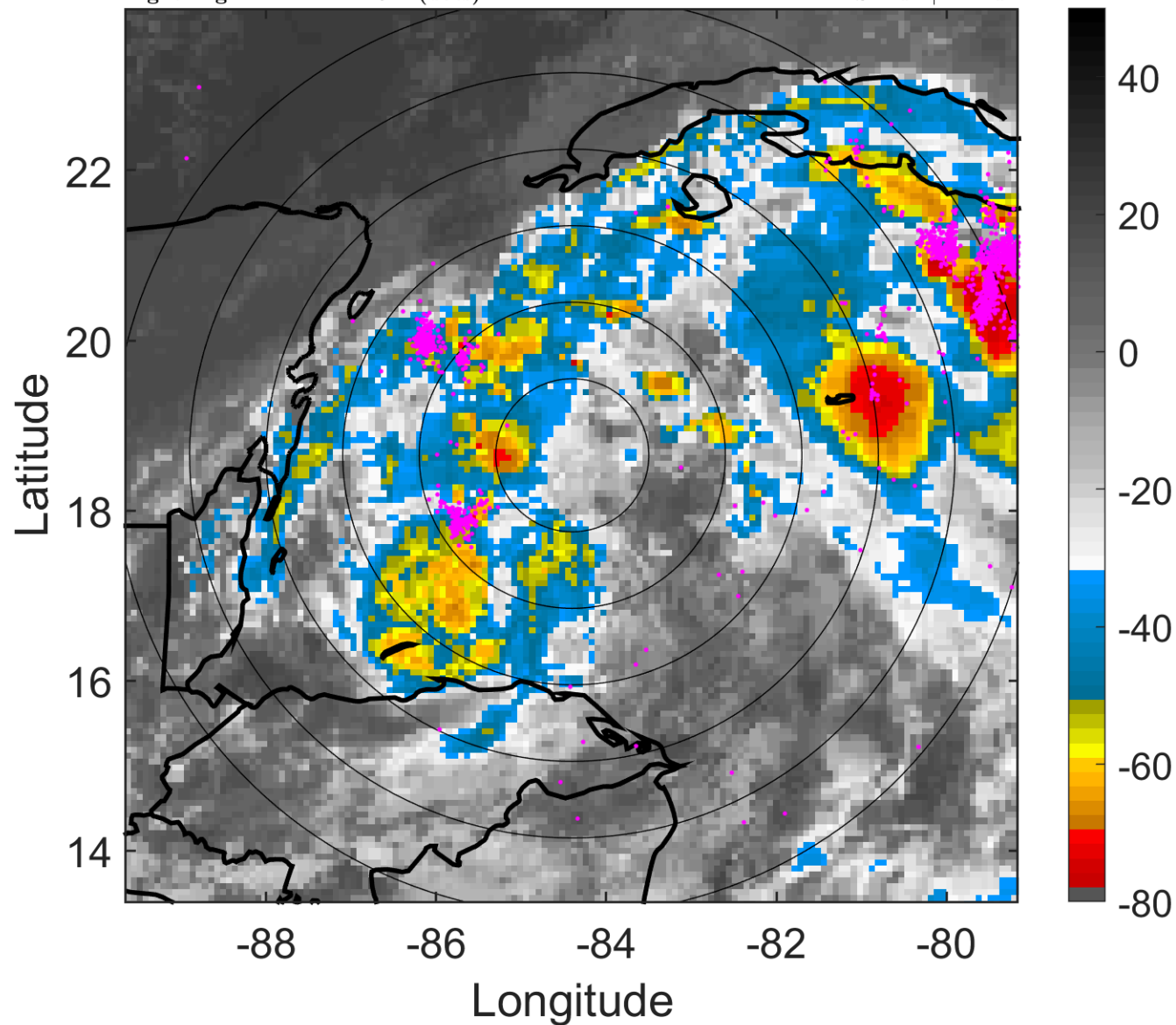
t: 2017102803 (21.4 LT)

Lightning: 21.4 LT \pm 1.5 h (dots)

PT: SLWP | EA: QUASI

18L (PHILIPPE) | 30 kt DB

S: null | H: null



6-h IR BT Differences & Lightning

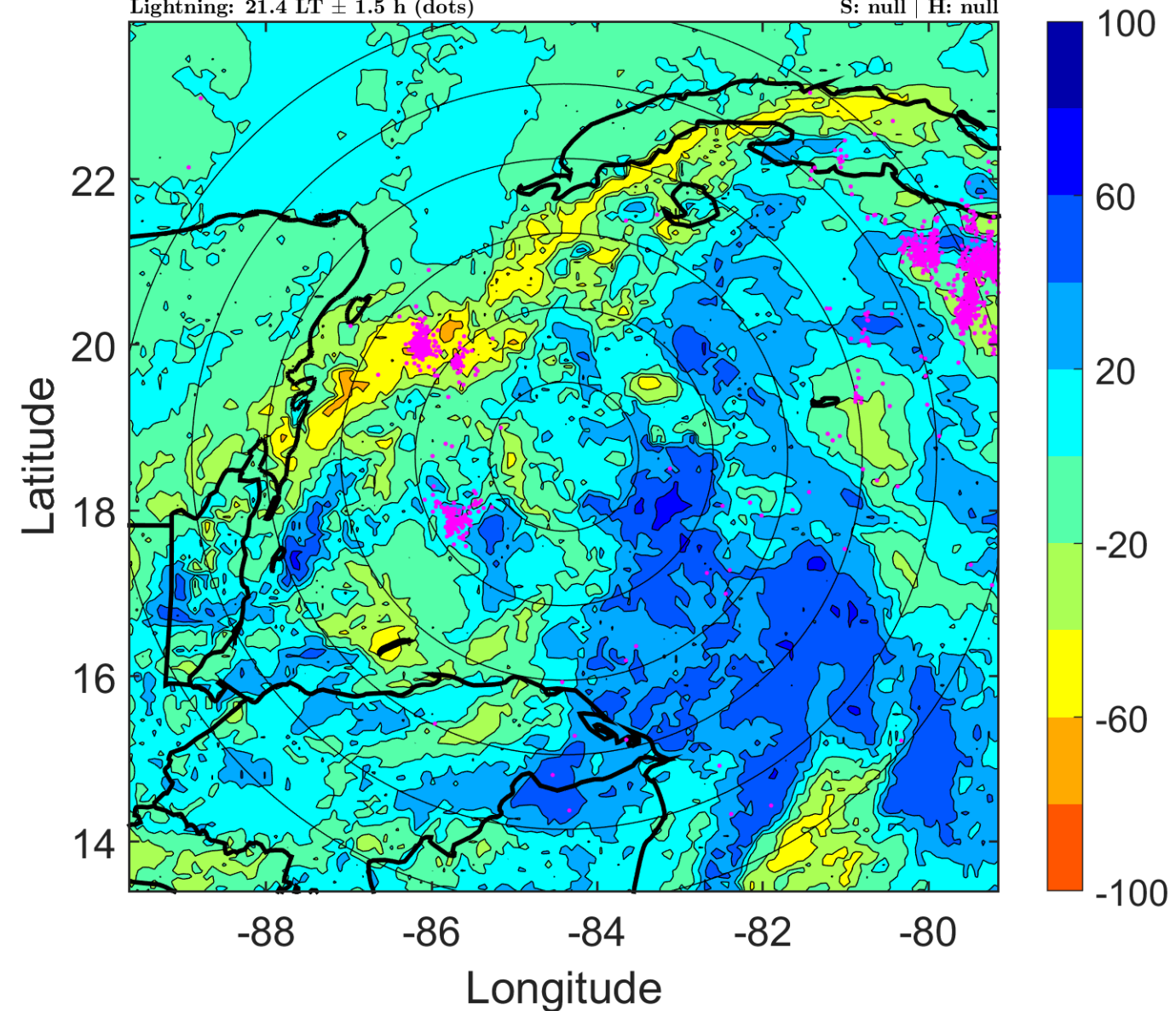
Δ t: 2017102803 (21.4 LT) - 2017102721 (15.4 LT)

Lightning: 21.4 LT \pm 1.5 h (dots)

PT: SLWP | EA: QUASI

18L (PHILIPPE) | 30 kt DB

S: null | H: null



IR BT & Lightning

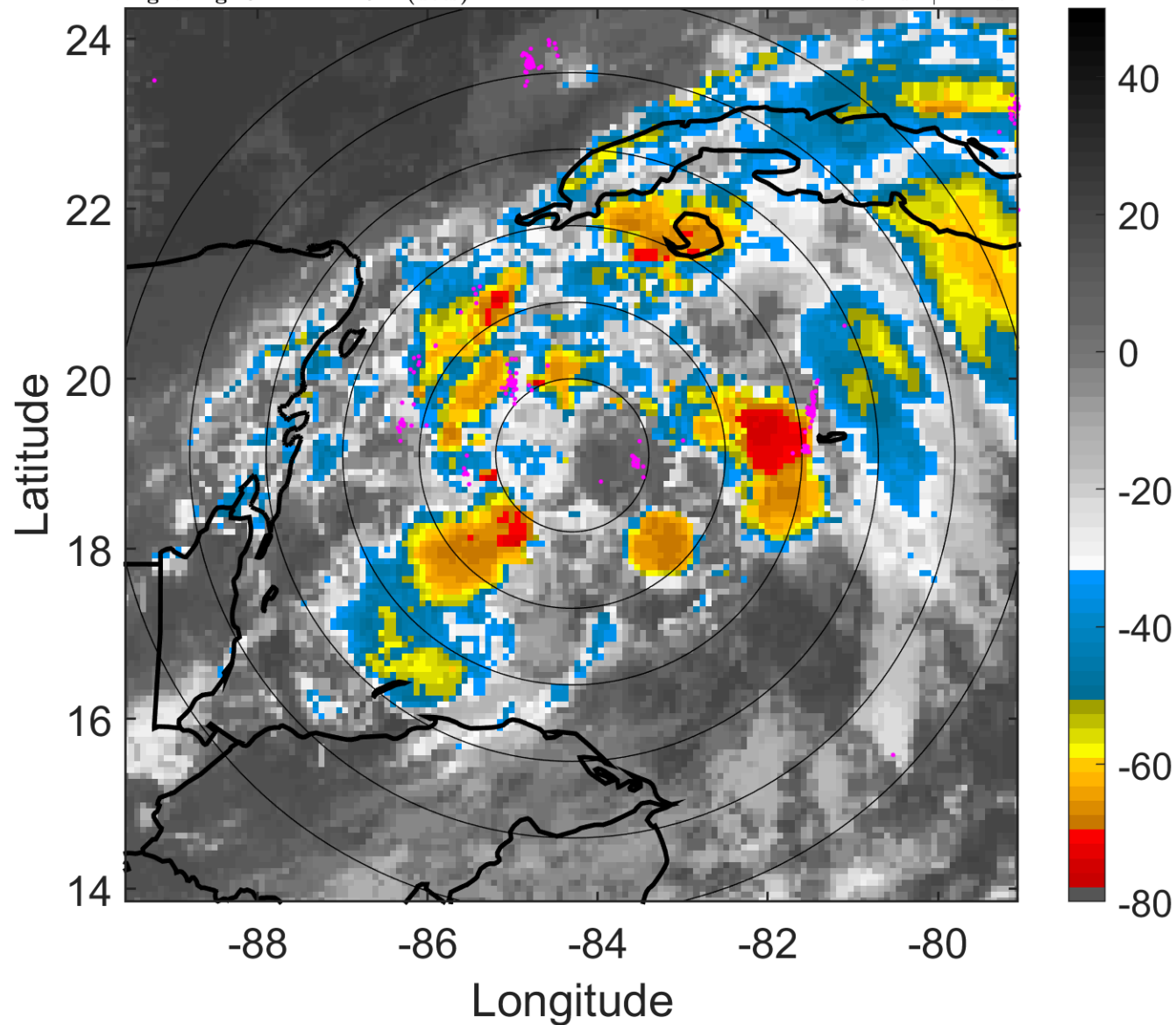
t: 2017102806 (0.4 LT)

Lightning: 0.4 LT \pm 1.5 h (dots)

PT: LLCP | EA: QUASI

18L (PHILIPPE) | 30 kt DB

S: null | H: null



6-h IR BT Differences & Lightning

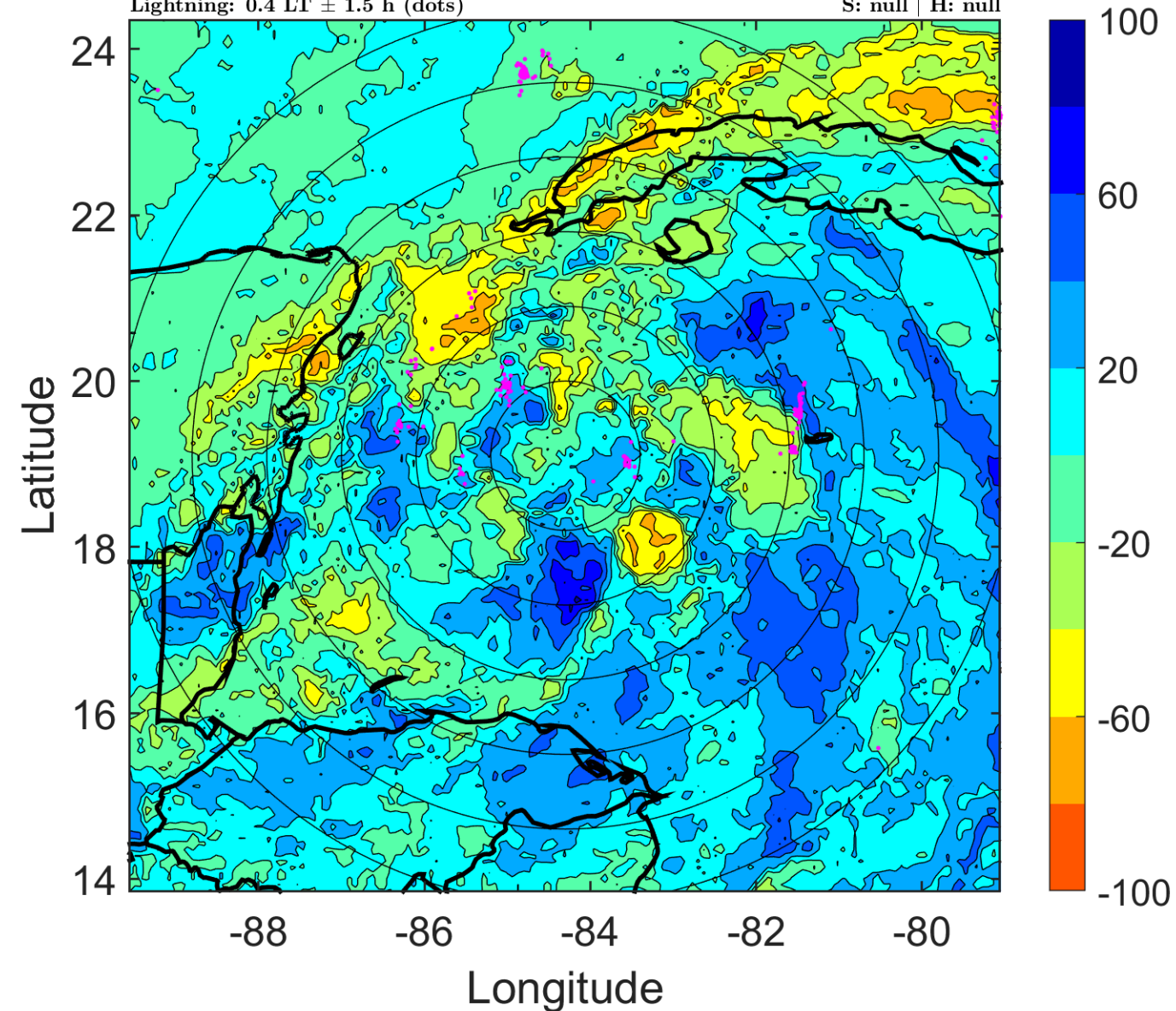
Δ t: 2017102806 (0.4 LT) - 2017102800 (18.4 LT)

Lightning: 0.4 LT \pm 1.5 h (dots)

PT: LLCP | EA: QUASI

18L (PHILIPPE) | 30 kt DB

S: null | H: null



IR BT & Lightning

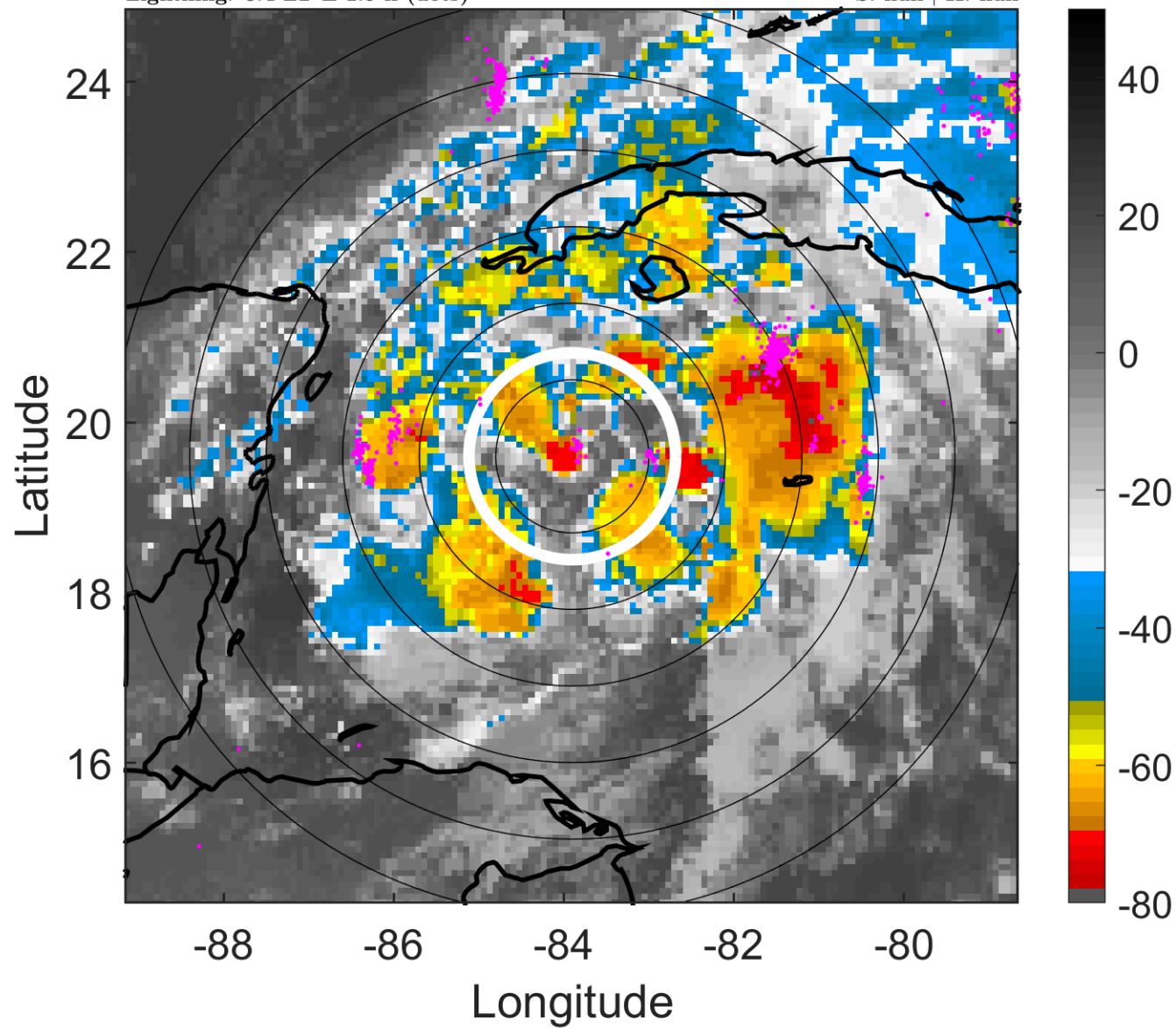
t: 2017102809 (3.4 LT)

Lightning: 3.4 LT \pm 1.5 h (dots)

PT: LLCP | EA: QUASI

18L (PHILIPPE) | 30 kt DB

S: null | H: null



6-h IR BT Differences & Lightning

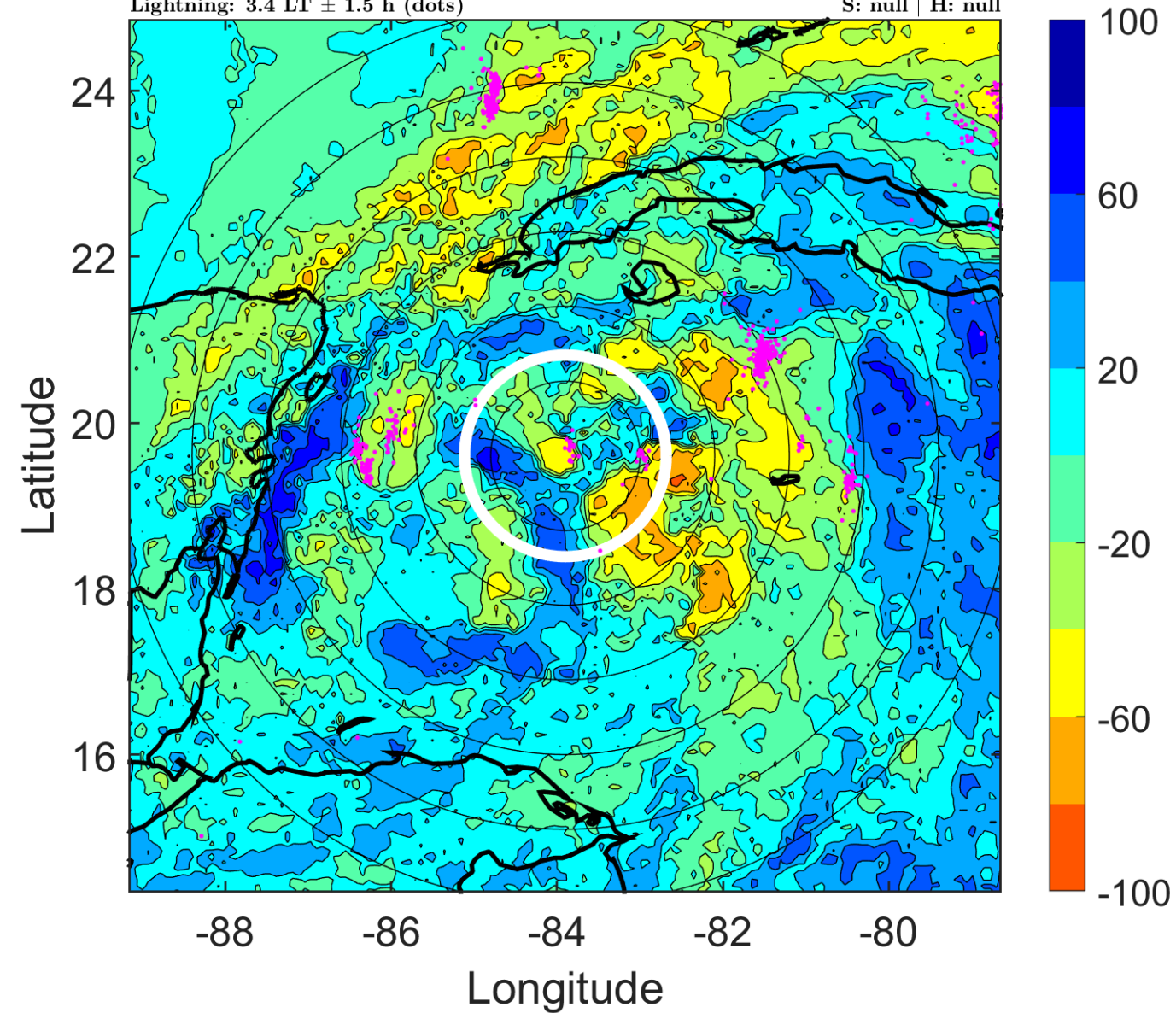
Δ t: 2017102809 (3.4 LT) - 2017102803 (21.4 LT)

Lightning: 3.4 LT \pm 1.5 h (dots)

PT: LLCP | EA: QUASI

18L (PHILIPPE) | 30 kt DB

S: null | H: null



IR BT & Lightning

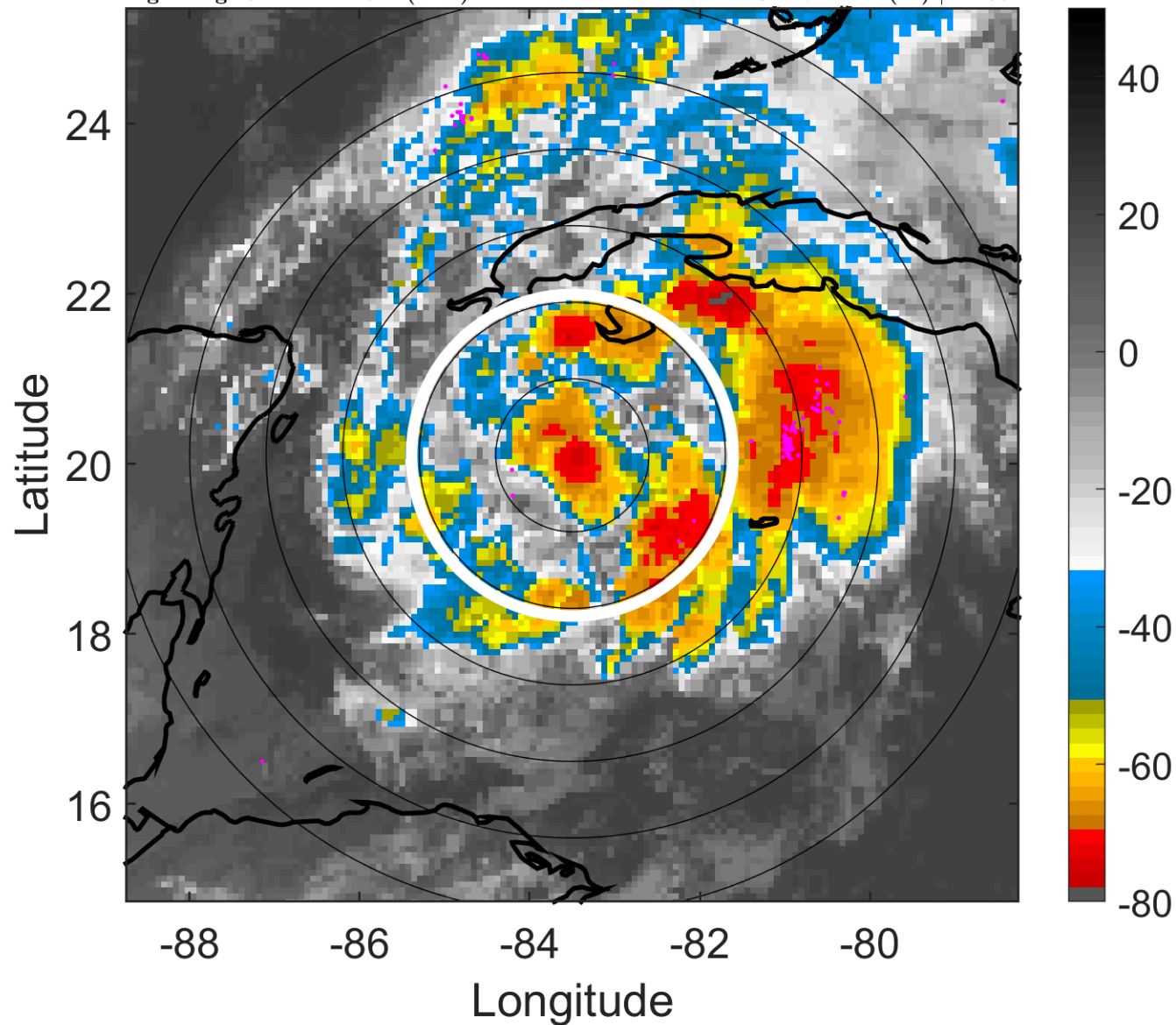
t: 2017102812 (6.4 LT)

Lightning: 6.4 LT \pm 1.5 h (dots)

PT: LLCP | EA: QUASI

18L (PHILIPPE) | 30 kt TD

S: 4.7 m s⁻¹ (M) | H: 66°



6-h IR BT Differences & Lightning

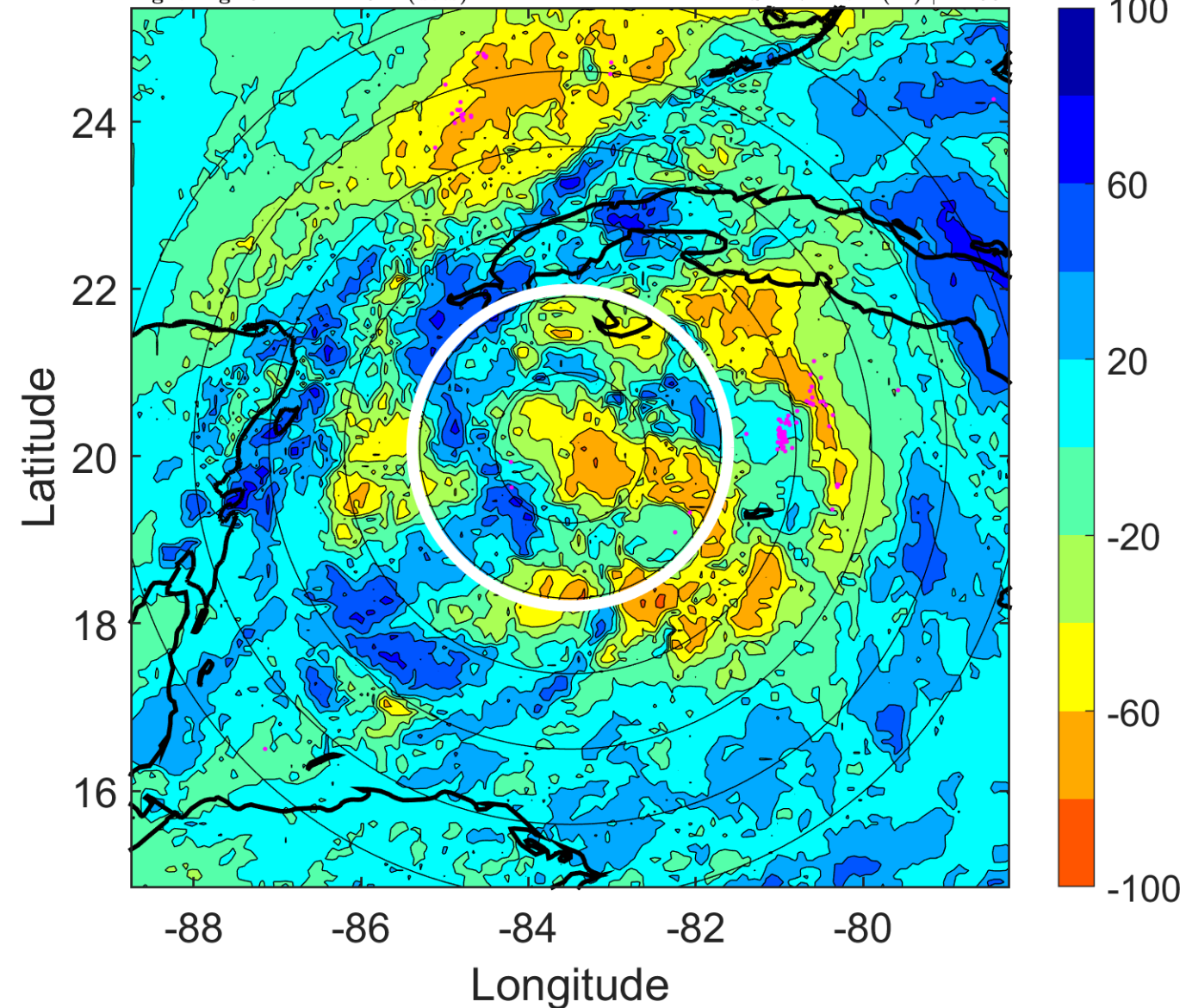
Δ t: 2017102812 (6.4 LT) - 2017102806 (0.4 LT)

Lightning: 6.4 LT \pm 1.5 h (dots)

PT: LLCP | EA: QUASI

18L (PHILIPPE) | 30 kt TD

S: 4.7 m s⁻¹ (M) | H: 66°



IR BT & Lightning

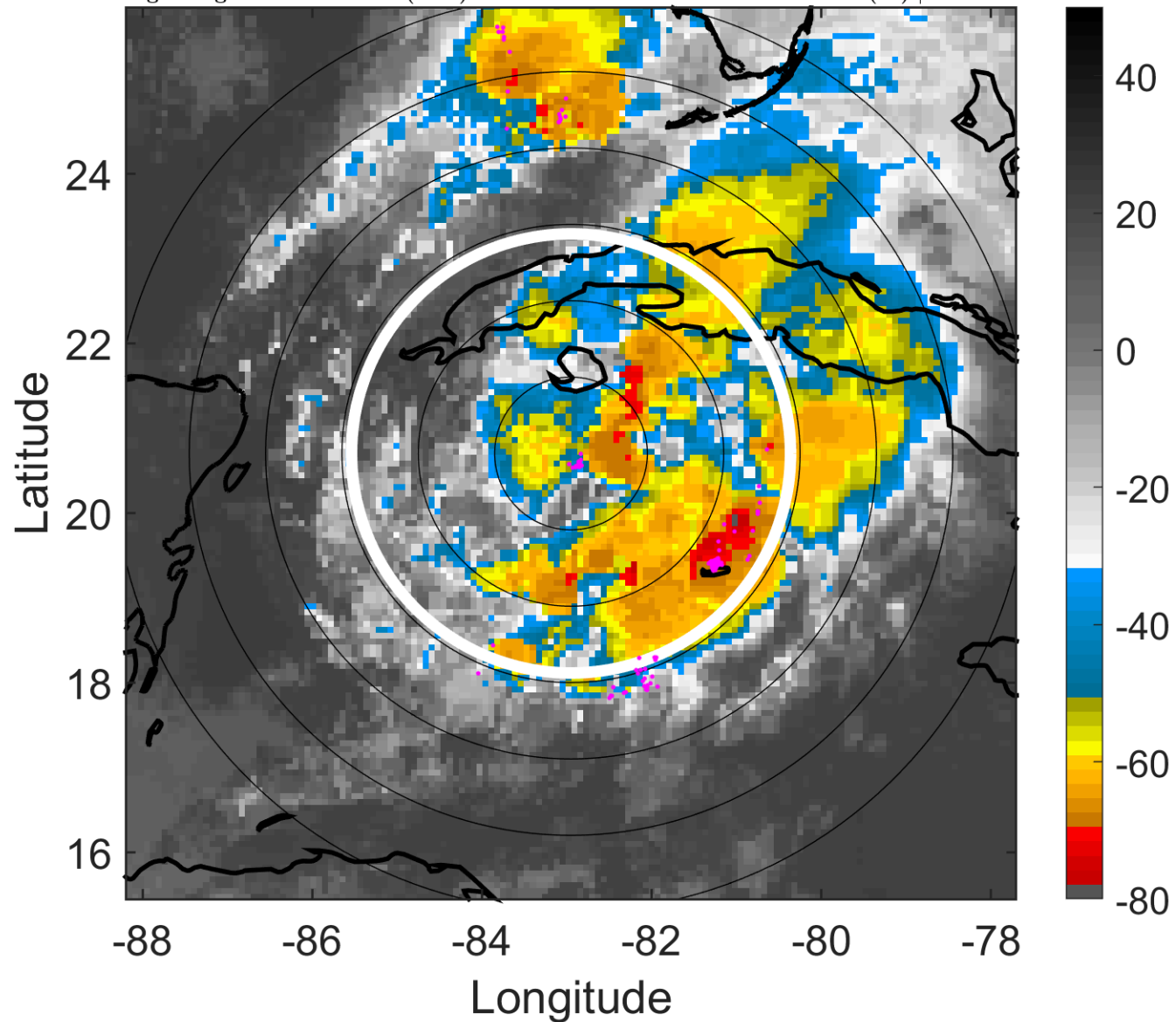
t: 2017102815 (9.5 LT)

Lightning: 9.5 LT \pm 1.5 h (dots)

PT: LLCP | EA: QUASI

18L (PHILIPPE) | 32.5 kt TD

S: 7.1 m s⁻¹ (M) | H: 67.5°



6-h IR BT Differences & Lightning

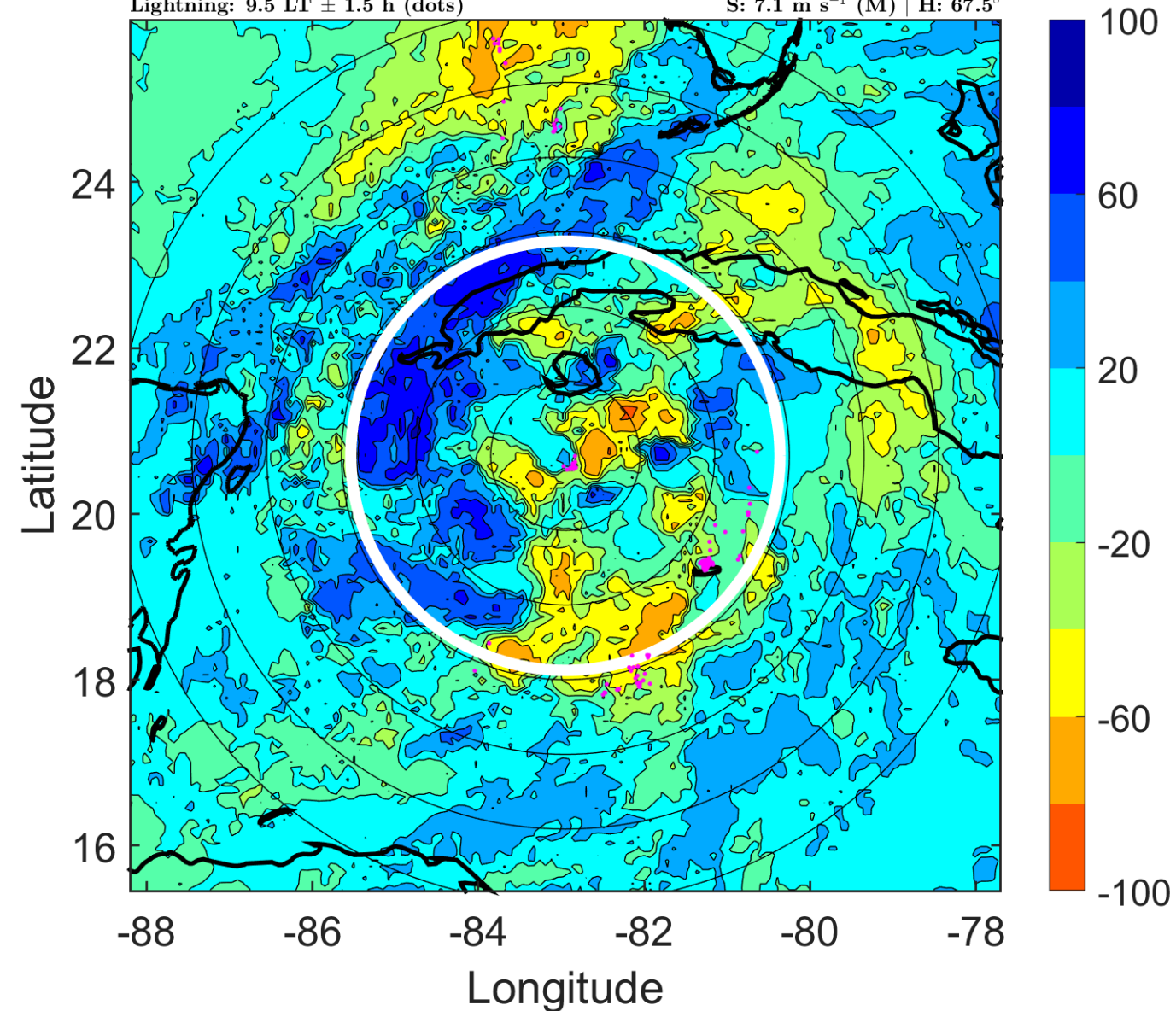
Δ t: 2017102815 (9.5 LT) - 2017102809 (3.4 LT)

Lightning: 9.5 LT \pm 1.5 h (dots)

PT: LLCP | EA: QUASI

18L (PHILIPPE) | 32.5 kt TD

S: 7.1 m s⁻¹ (M) | H: 67.5°



IR BT & Lightning

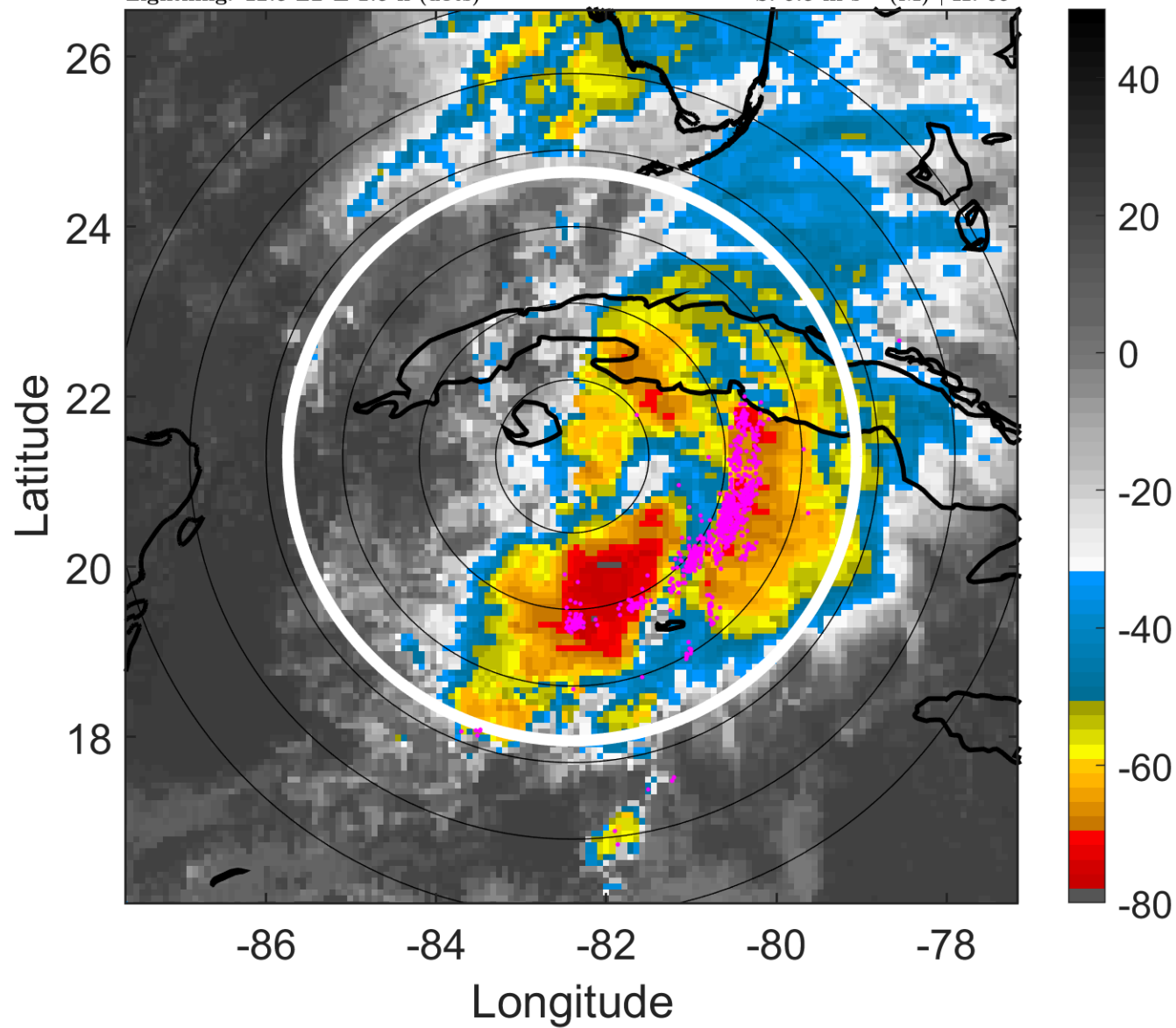
t: 2017102818 (12.5 LT)

Lightning: 12.5 LT \pm 1.5 h (dots)

PT: LLCP | EA: QUASI

18L (PHILIPPE) | 35 kt TS

S: 9.5 m s⁻¹ (M) | H: 69°



6-h IR BT Differences & Lightning

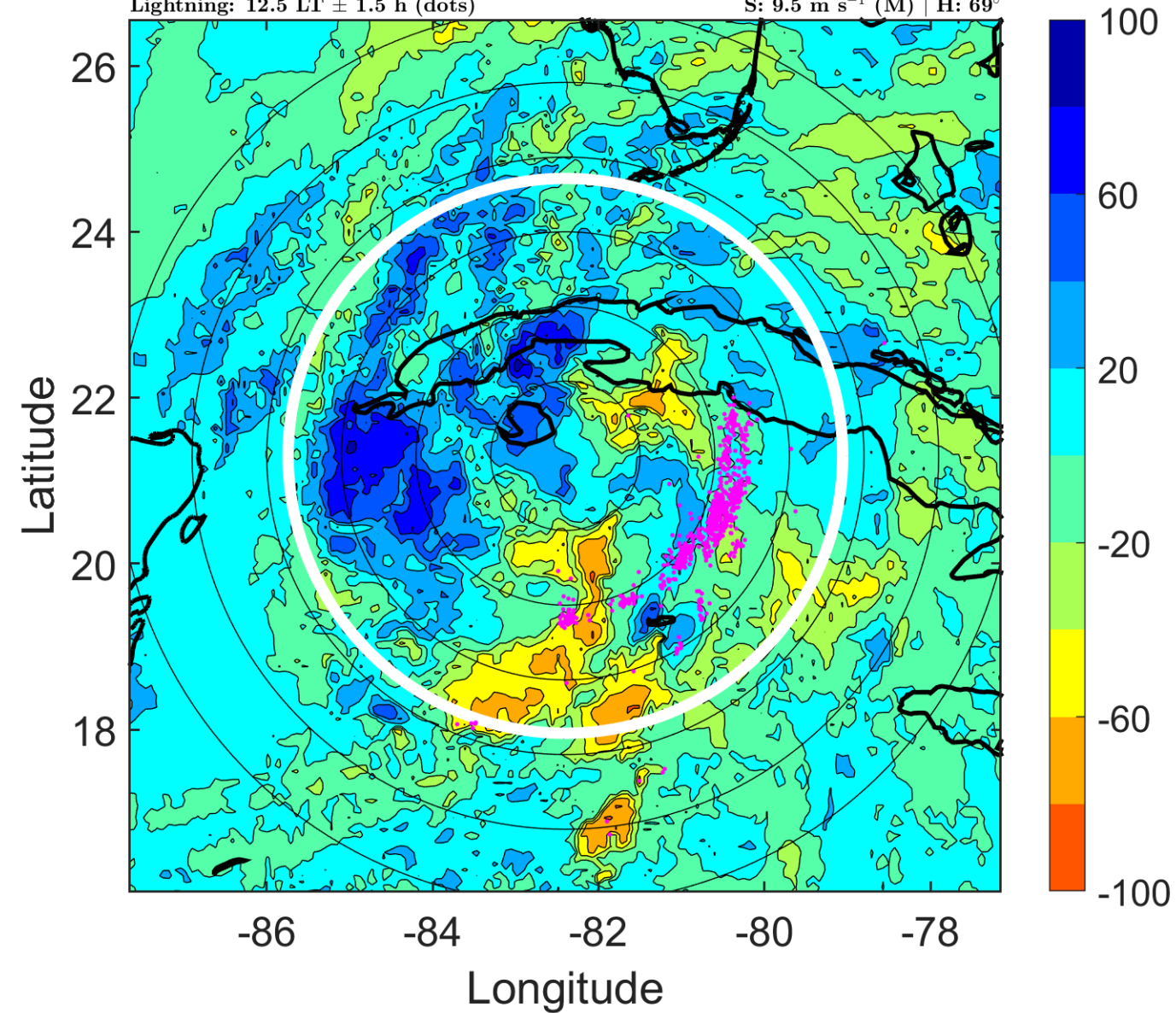
Δ t: 2017102818 (12.5 LT) - 2017102812 (6.4 LT)

Lightning: 12.5 LT \pm 1.5 h (dots)

PT: LLCP | EA: QUASI

18L (PHILIPPE) | 35 kt TS

S: 9.5 m s⁻¹ (M) | H: 69°



IR BT & Lightning

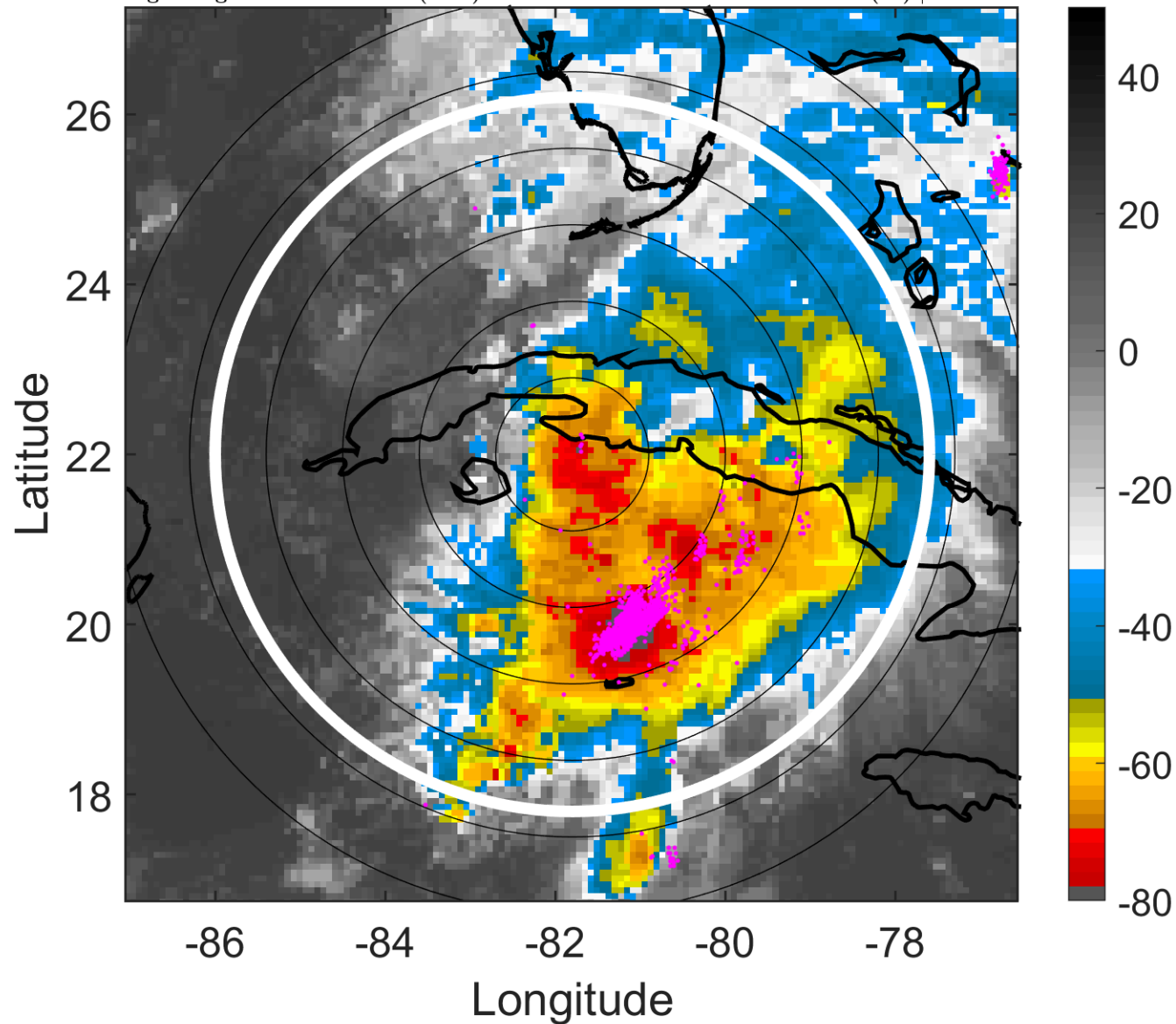
t: 2017102821 (15.5 LT)

Lightning: 15.5 LT \pm 1.5 h (dots)

PT: LLCP | EA: QUASI

18L (PHILIPPE) | 32.5 kt TD

S: 10.4 m s⁻¹ (M) | H: 61.5°



6-h IR BT Differences & Lightning

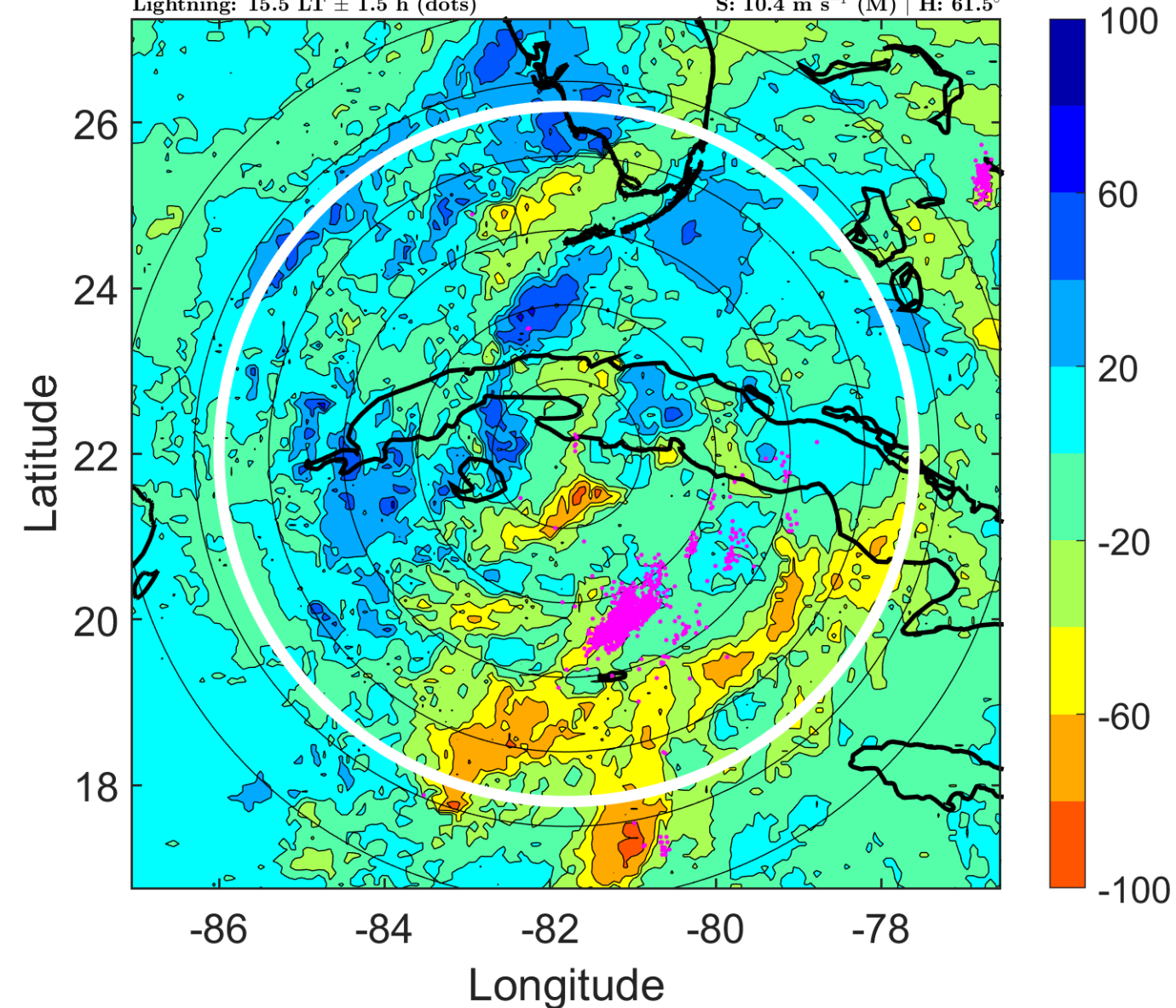
Δ t: 2017102821 (15.5 LT) - 2017102815 (9.5 LT)

Lightning: 15.5 LT \pm 1.5 h (dots)

PT: LLCP | EA: QUASI

18L (PHILIPPE) | 32.5 kt TD

S: 10.4 m s⁻¹ (M) | H: 61.5°



IR BT & Lightning

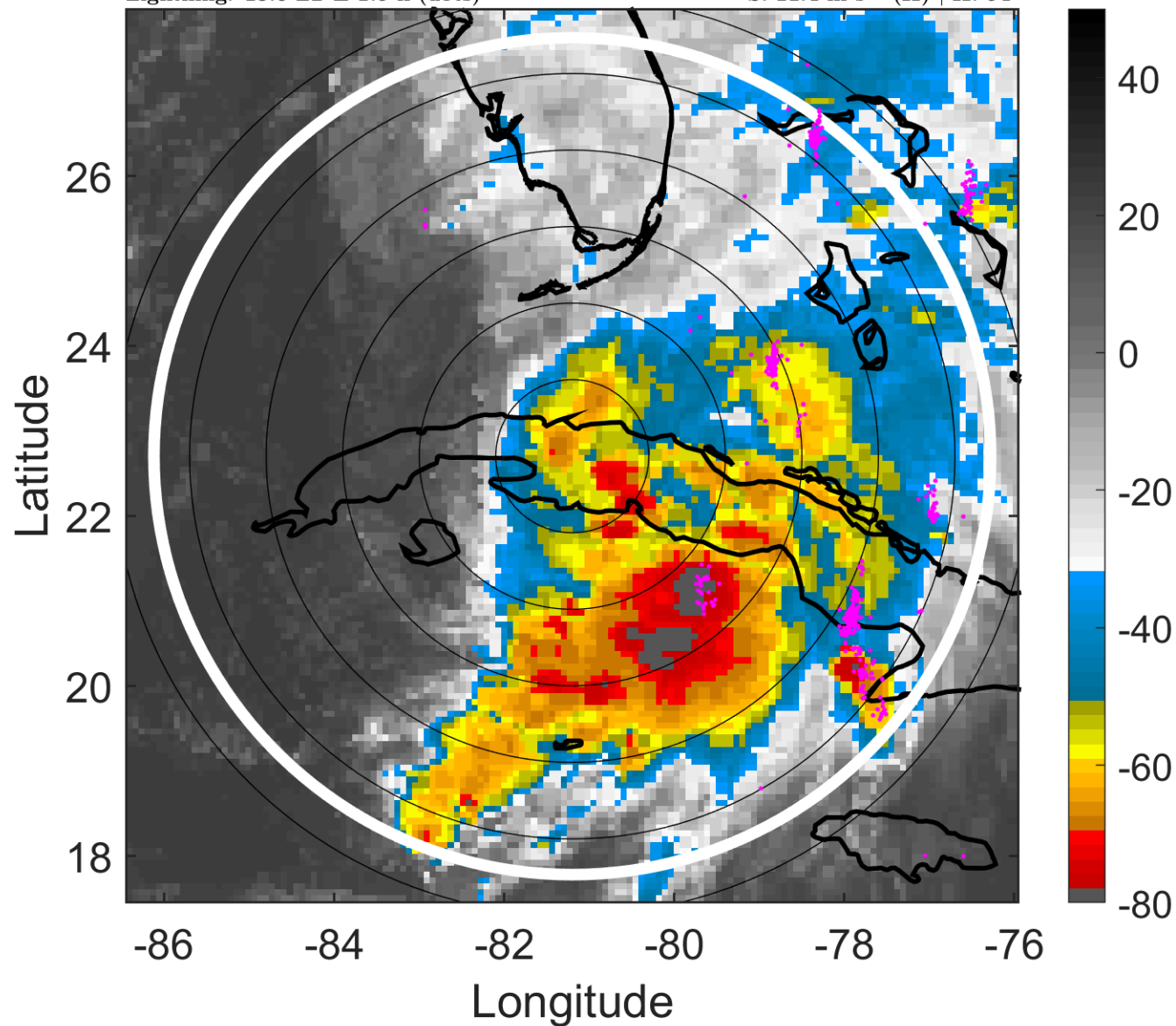
t: 2017102900 (18.6 LT)

Lightning: 18.6 LT \pm 1.5 h (dots)

PT: LLCP | EA: QUASI

18L (PHILIPPE) | 30 kt TD

S: 11.4 m s⁻¹ (H) | H: 54°



6-h IR BT Differences & Lightning

Δ t: 2017102900 (18.6 LT) - 2017102818 (12.5 LT)

Lightning: 18.6 LT \pm 1.5 h (dots)

PT: LLCP | EA: QUASI

18L (PHILIPPE) | 30 kt TD

S: 11.4 m s⁻¹ (H) | H: 54°

