

IR BT & Lightning

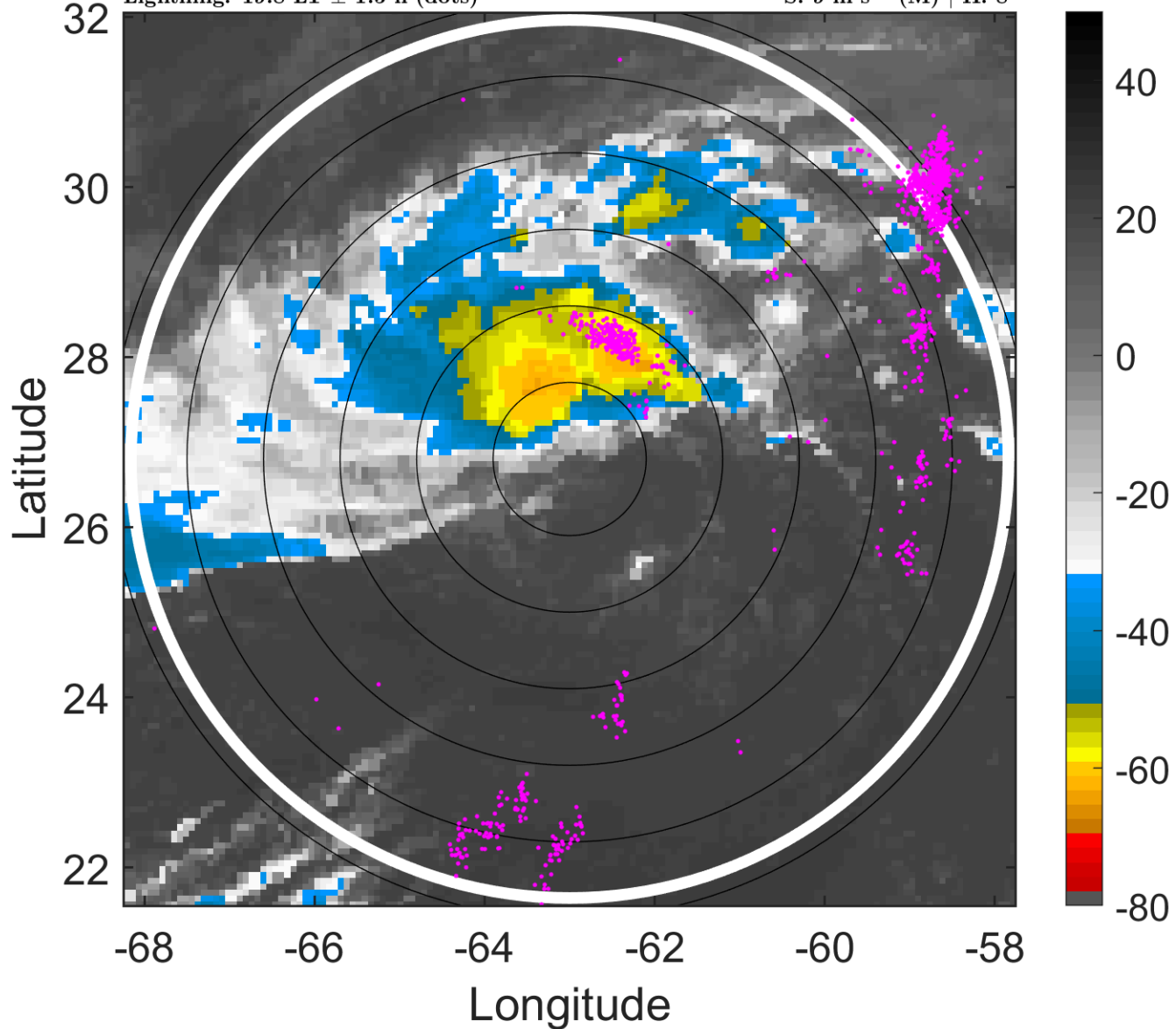
t: 2010102900 (19.8 LT)

Lightning: 19.8 LT \pm 1.5 h (dots)

PT: NP | EA: INACT

20L (SHARY) | 35 kt TS

S: 9 m s⁻¹ (M) | H: 8°



6-h IR BT Differences & Lightning

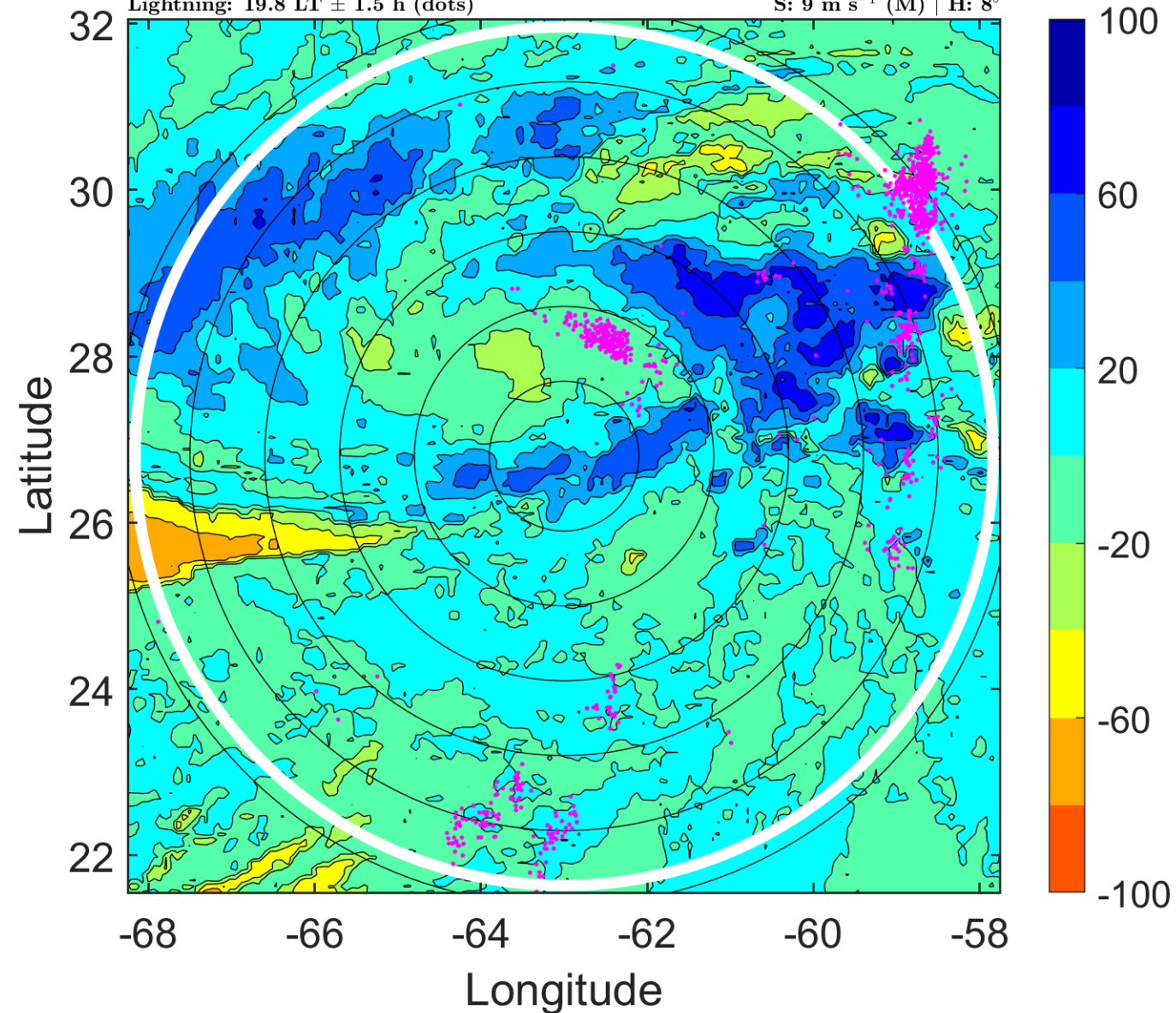
Δ t: 2010102900 (19.8 LT) - 2010102818 (13.9 LT)

Lightning: 19.8 LT \pm 1.5 h (dots)

PT: NP | EA: INACT

20L (SHARY) | 35 kt TS

S: 9 m s⁻¹ (M) | H: 8°



IR BT & Lightning

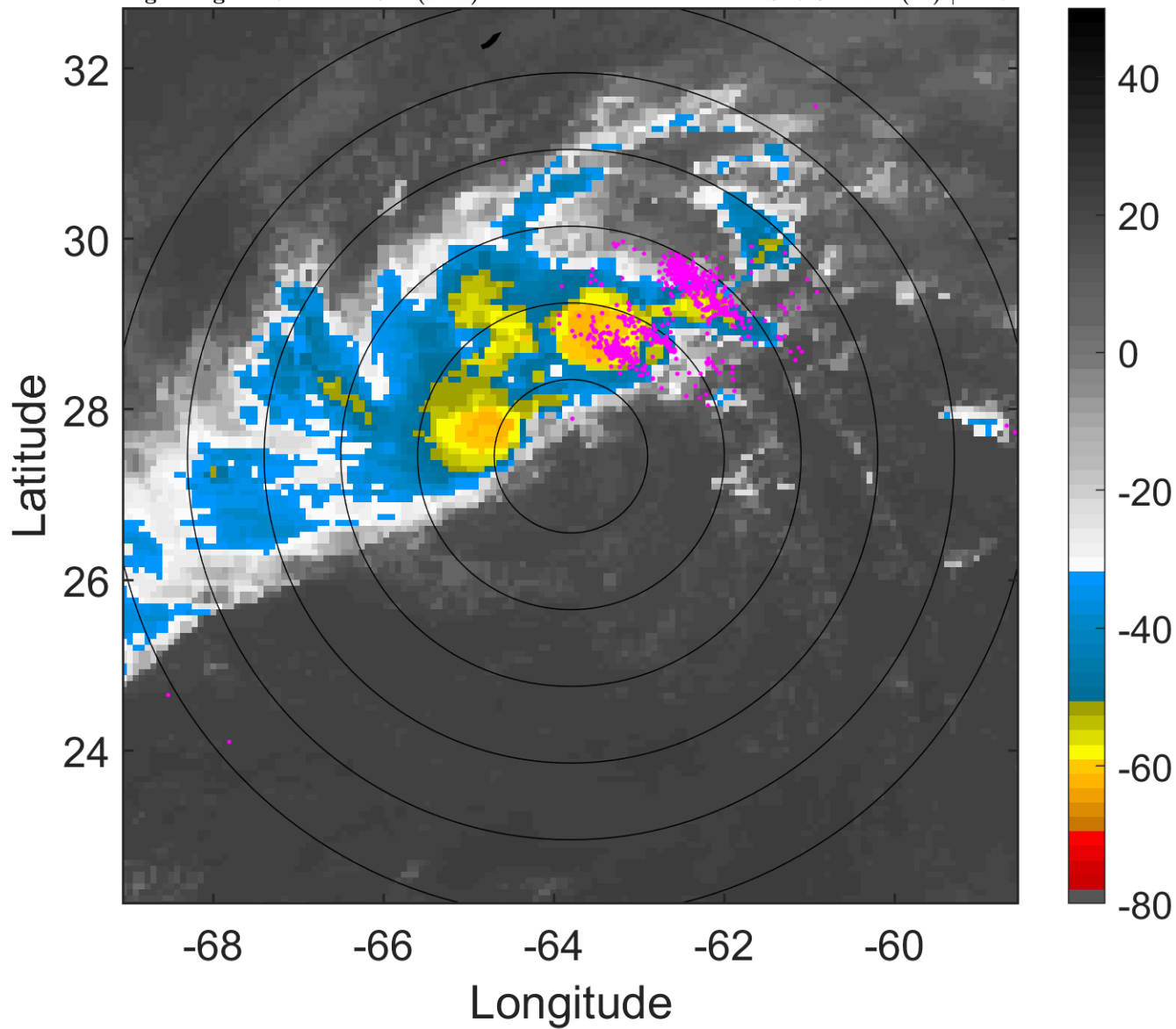
t: 2010102903 (22.7 LT)

Lightning: 22.7 LT \pm 1.5 h (dots)

PT: NP | EA: INACT

20L (SHARY) | 37.5 kt TS

S: 7.3 m s⁻¹ (M) | H: 7°



6-h IR BT Differences & Lightning

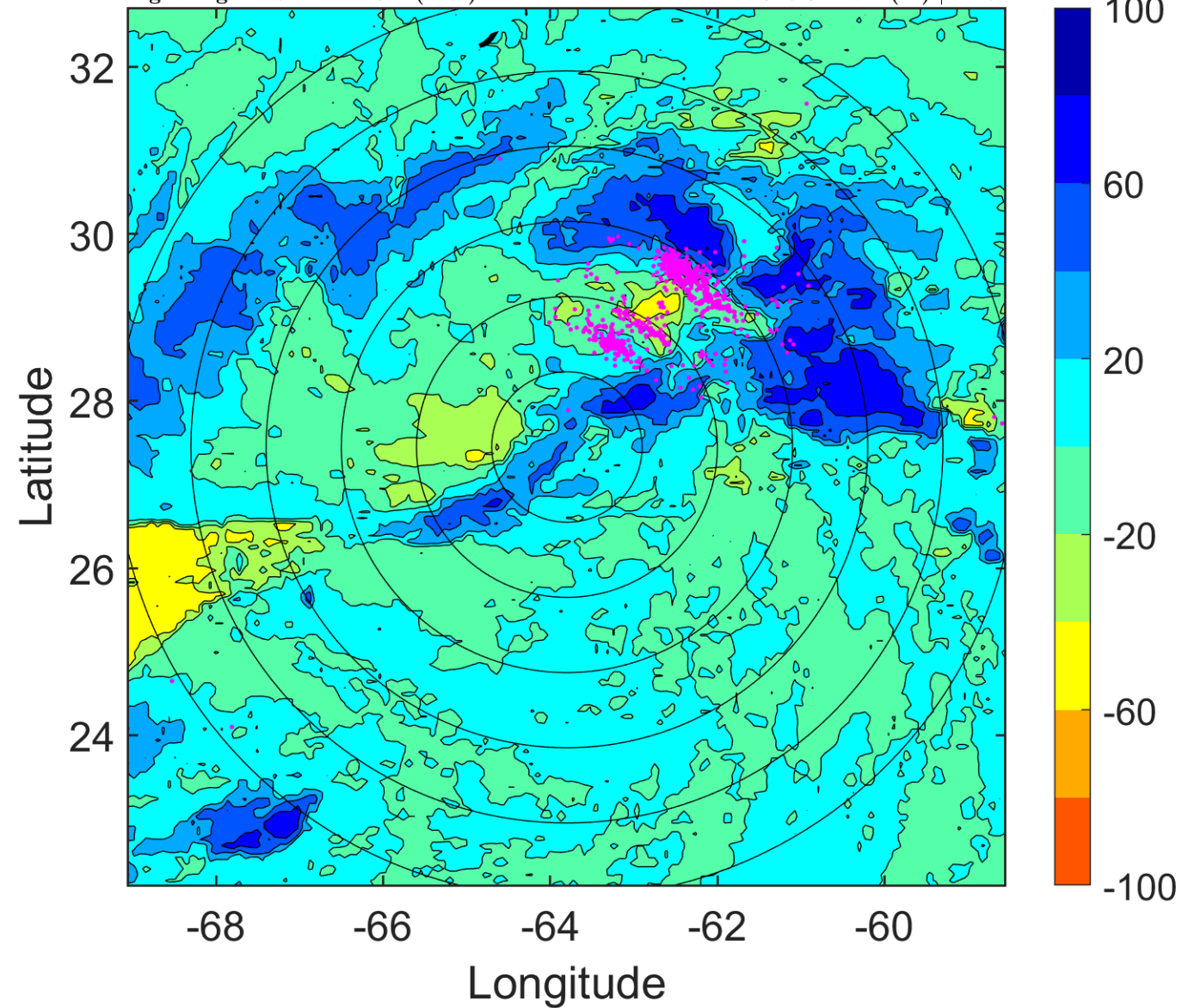
Δ t: 2010102903 (22.7 LT) - 2010102821 (16.9 LT)

Lightning: 22.7 LT \pm 1.5 h (dots)

PT: NP | EA: INACT

20L (SHARY) | 37.5 kt TS

S: 7.3 m s⁻¹ (M) | H: 7°



IR BT & Lightning

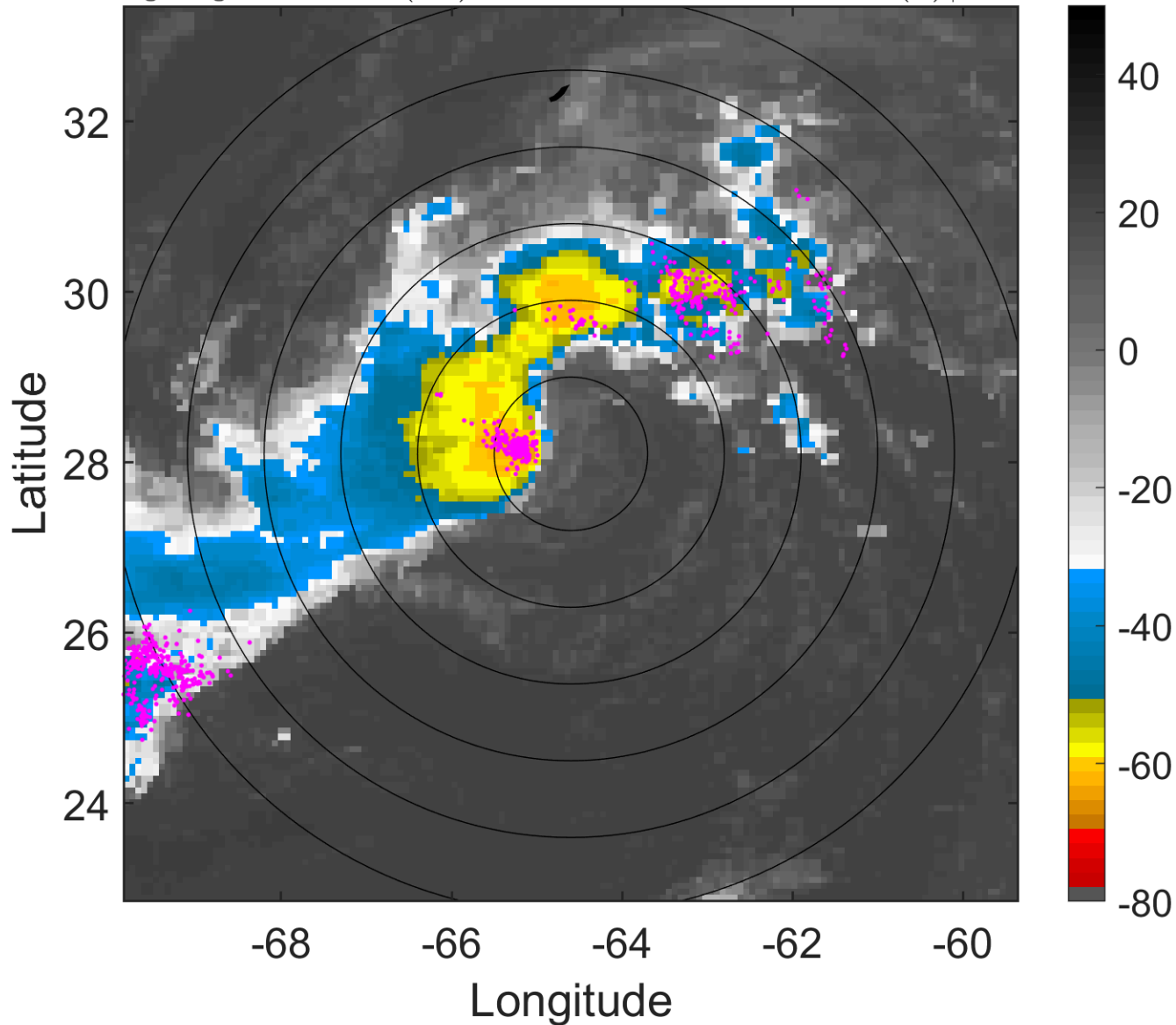
t: 2010102906 (1.7 LT)

Lightning: 1.7 LT \pm 1.5 h (dots)

PT: LLCP | EA: ACT

20L (SHARY) | 40 kt TS

S: 5.5 m s⁻¹ (M) | H: 6°



6-h IR BT Differences & Lightning

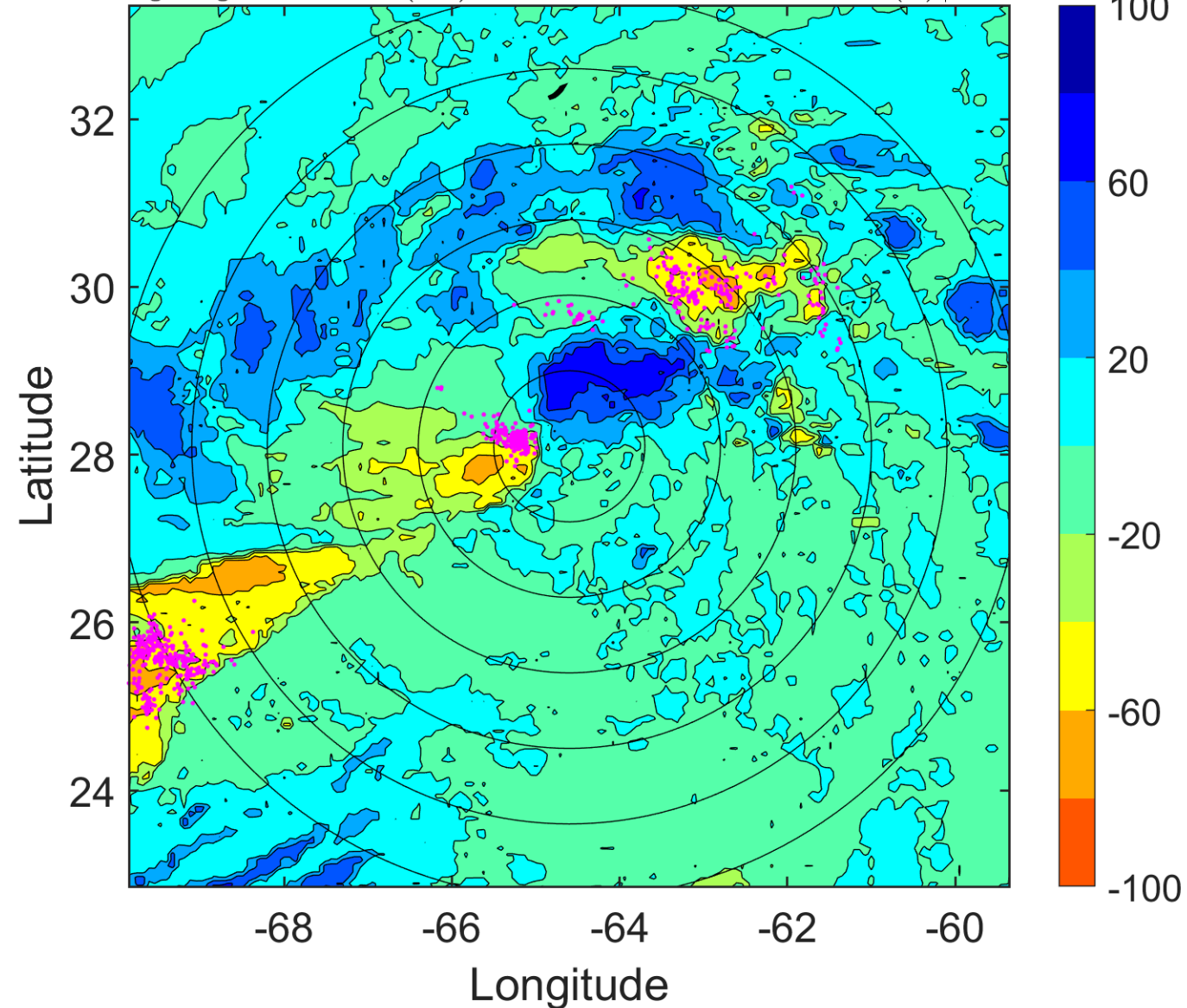
Δ t: 2010102906 (1.7 LT) - 2010102900 (19.8 LT)

Lightning: 1.7 LT \pm 1.5 h (dots)

PT: LLCP | EA: ACT

20L (SHARY) | 40 kt TS

S: 5.5 m s⁻¹ (M) | H: 6°



IR BT & Lightning

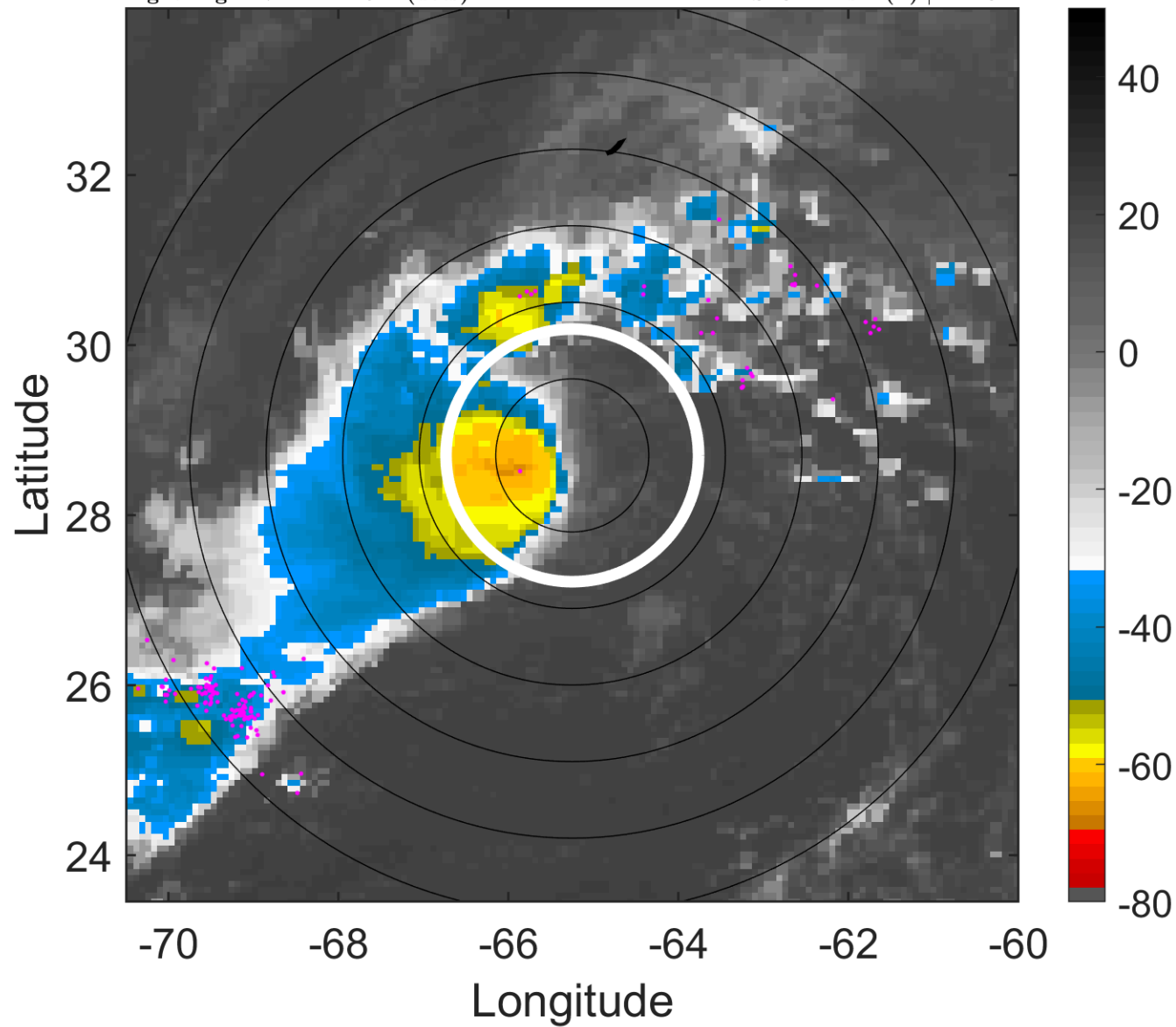
t: 2010102909 (4.7 LT)

Lightning: 4.7 LT \pm 1.5 h (dots)

PT: LLCP | EA: ACT

20L (SHARY) | 45 kt TS

S: 3.2 m s⁻¹ (L) | H: 132°



6-h IR BT Differences & Lightning

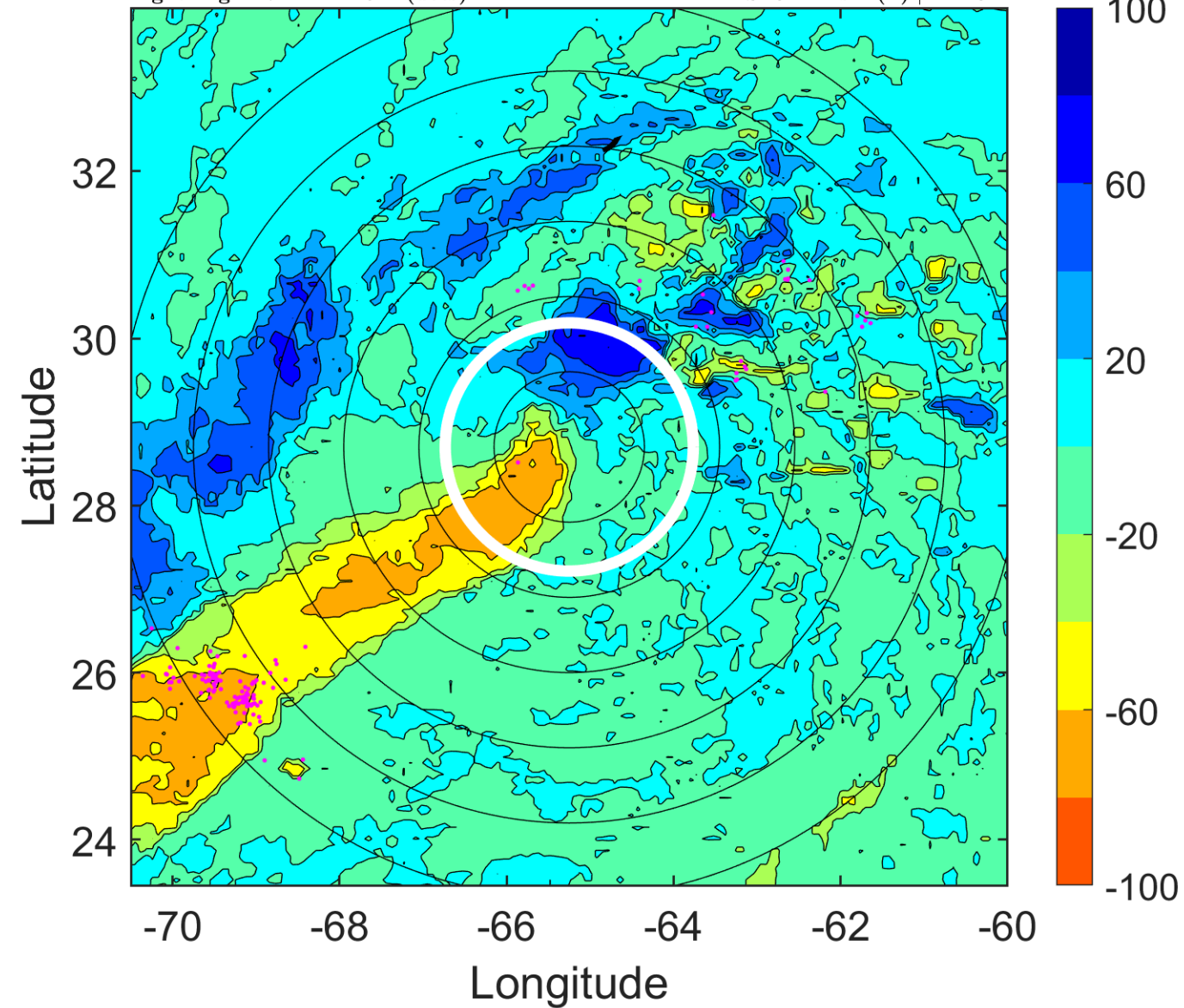
Δ t: 2010102909 (4.7 LT) - 2010102903 (22.7 LT)

Lightning: 4.7 LT \pm 1.5 h (dots)

PT: LLCP | EA: ACT

20L (SHARY) | 45 kt TS

S: 3.2 m s⁻¹ (L) | H: 132°



IR BT & Lightning

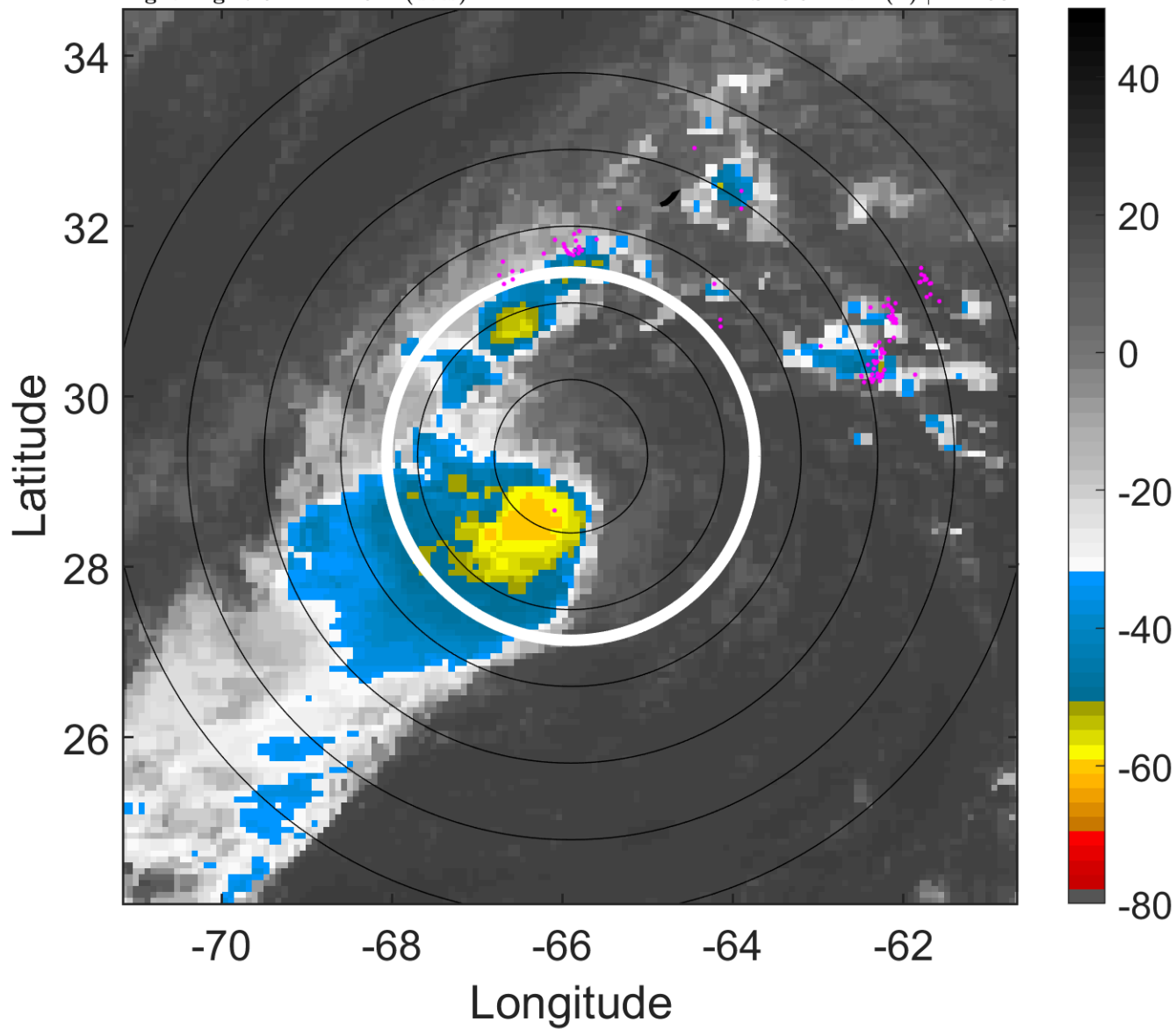
t: 2010102912 (7.6 LT)

Lightning: 7.6 LT \pm 1.5 h (dots)

PT: LLCP | EA: ACT

20L (SHARY) | 50 kt TS

S: 0.9 m s⁻¹ (L) | H: 258°



6-h IR BT Differences & Lightning

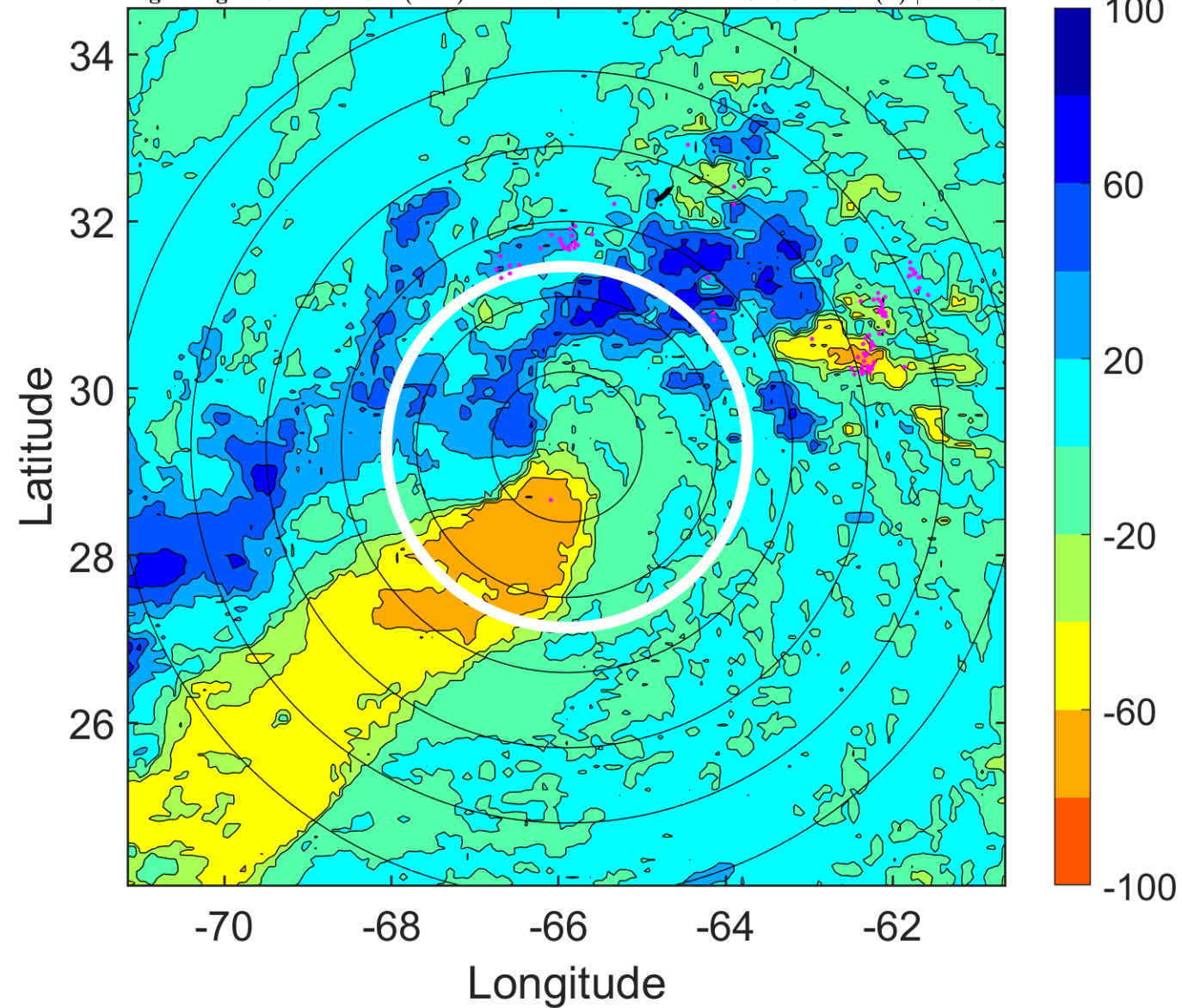
Δ t: 2010102912 (7.6 LT) - 2010102906 (1.7 LT)

Lightning: 7.6 LT \pm 1.5 h (dots)

PT: LLCP | EA: ACT

20L (SHARY) | 50 kt TS

S: 0.9 m s⁻¹ (L) | H: 258°



IR BT & Lightning

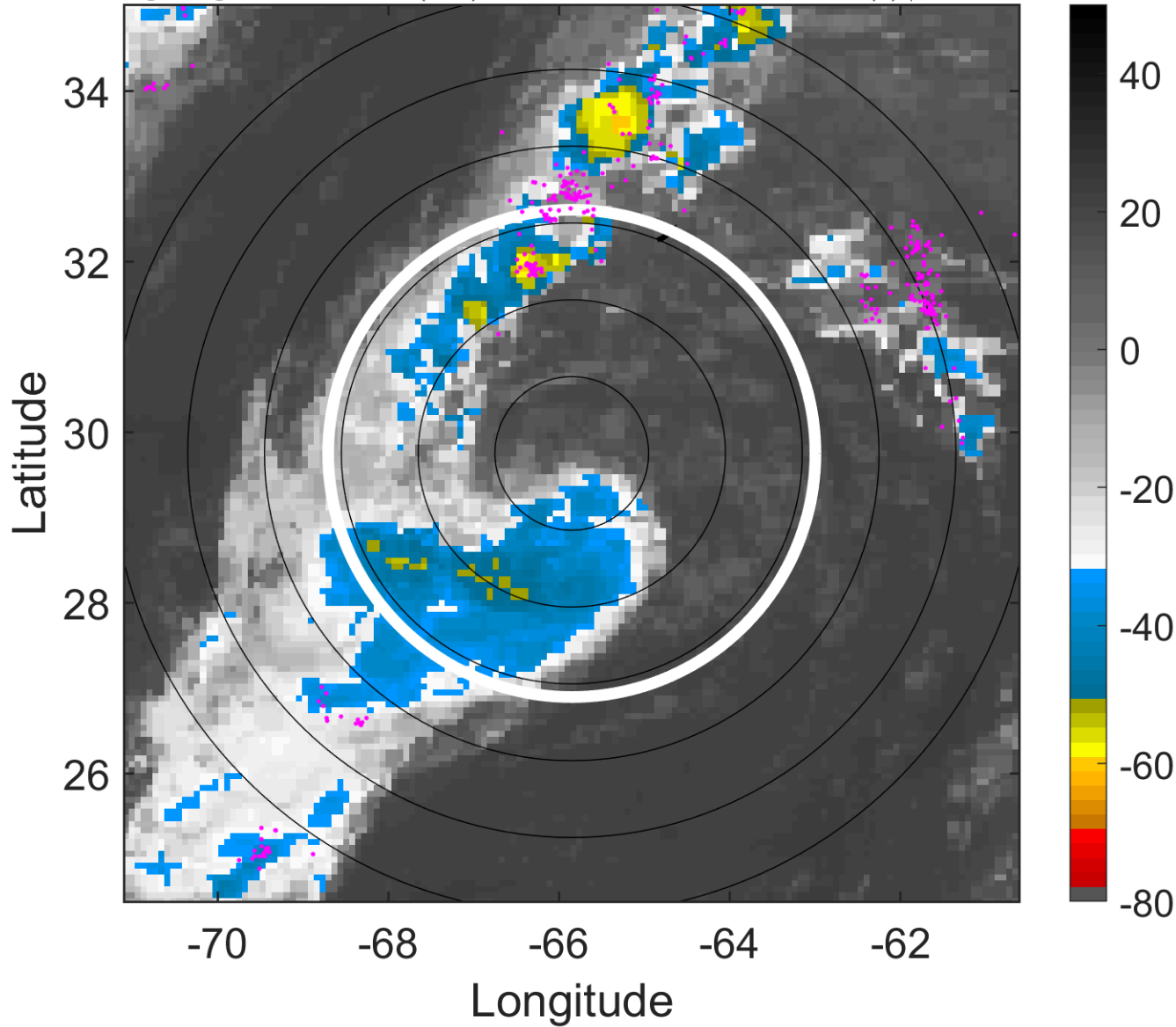
t: 2010102915 (10.6 LT)

Lightning: 10.6 LT \pm 1.5 h (dots)

PT: LLCP | EA: ACT

20L (SHARY) | 52.5 kt TS

S: 3.6 m s⁻¹ (L) | H: 298.5°



6-h IR BT Differences & Lightning

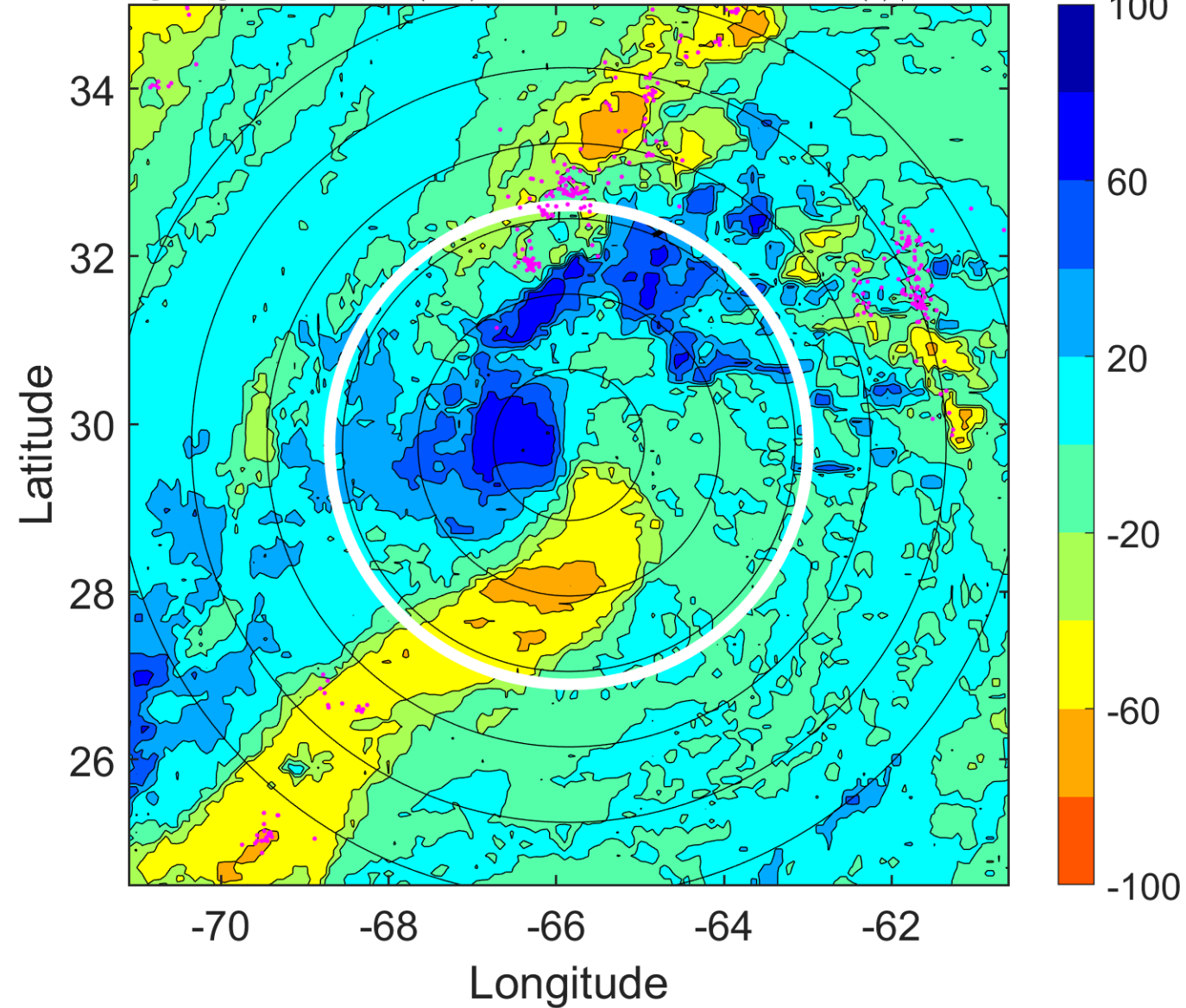
Δ t: 2010102915 (10.6 LT) - 2010102909 (4.7 LT)

Lightning: 10.6 LT \pm 1.5 h (dots)

PT: LLCP | EA: ACT

20L (SHARY) | 52.5 kt TS

S: 3.6 m s⁻¹ (L) | H: 298.5°



IR BT & Lightning

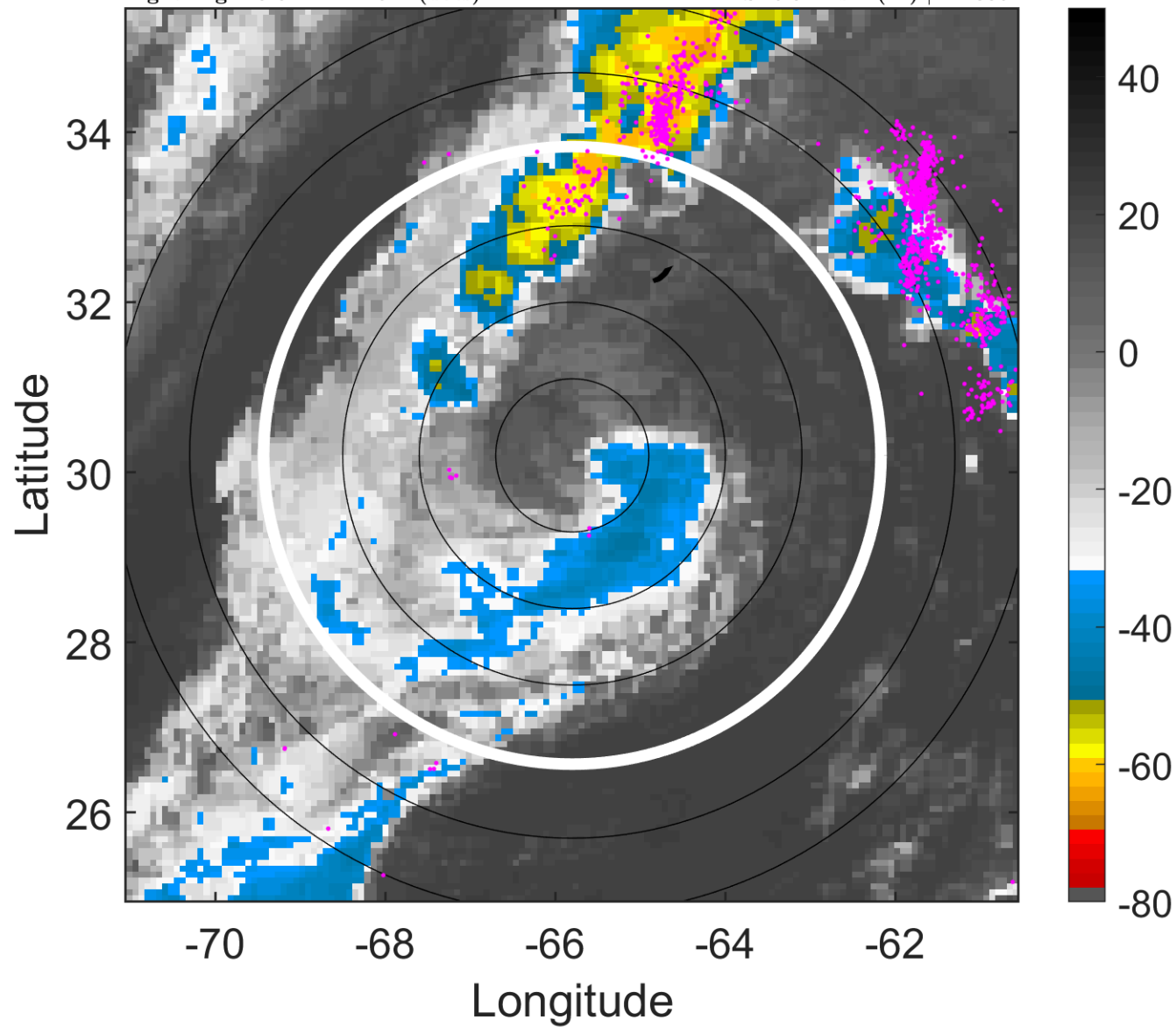
t: 2010102918 (13.6 LT)

Lightning: 13.6 LT \pm 1.5 h (dots)

PT: LLCP | EA: ACT

20L (SHARY) | 55 kt TS

S: 6.3 m s⁻¹ (M) | H: 339°



6-h IR BT Differences & Lightning

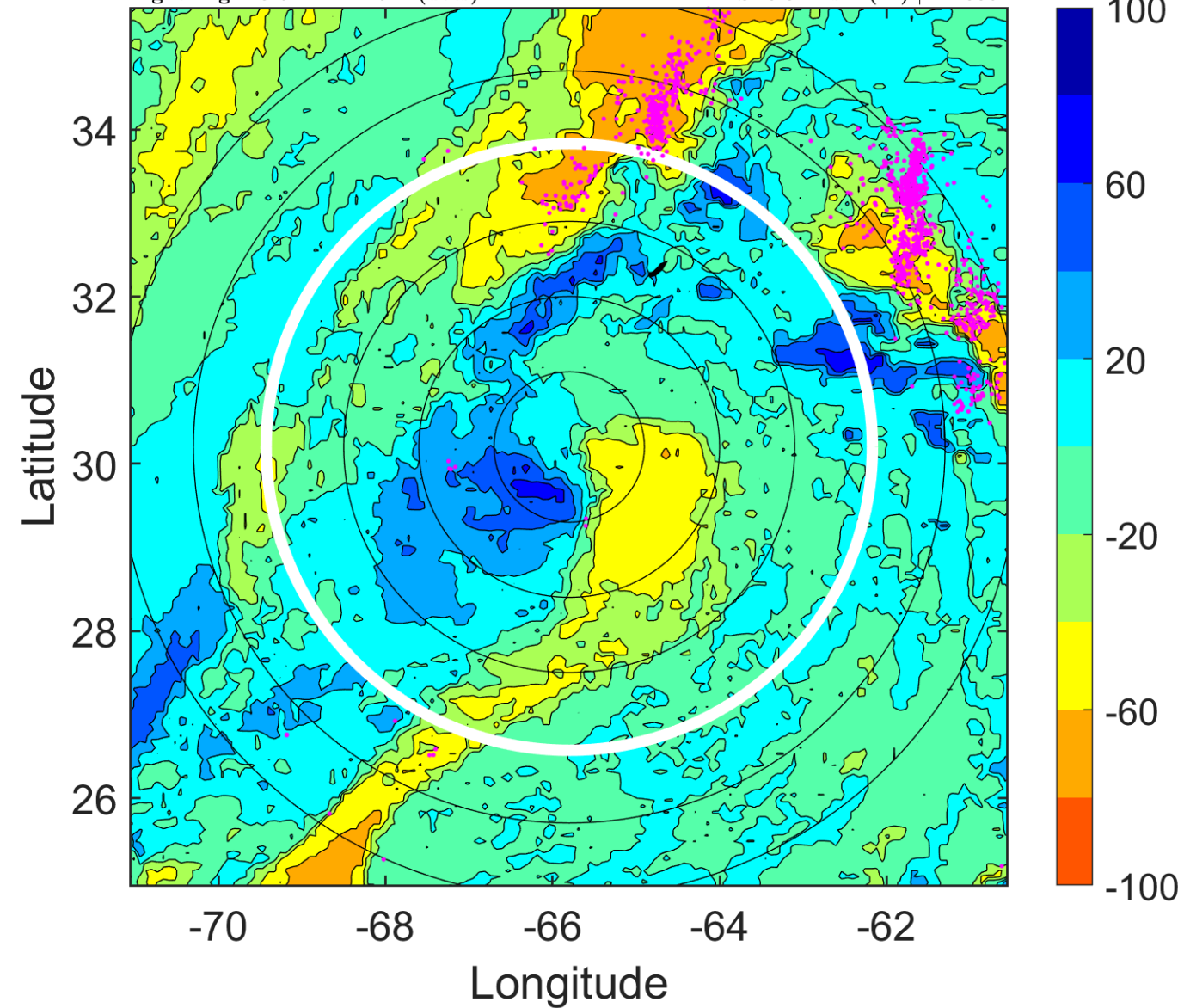
Δ t: 2010102918 (13.6 LT) - 2010102912 (7.6 LT)

Lightning: 13.6 LT \pm 1.5 h (dots)

PT: LLCP | EA: ACT

20L (SHARY) | 55 kt TS

S: 6.3 m s⁻¹ (M) | H: 339°



IR BT & Lightning

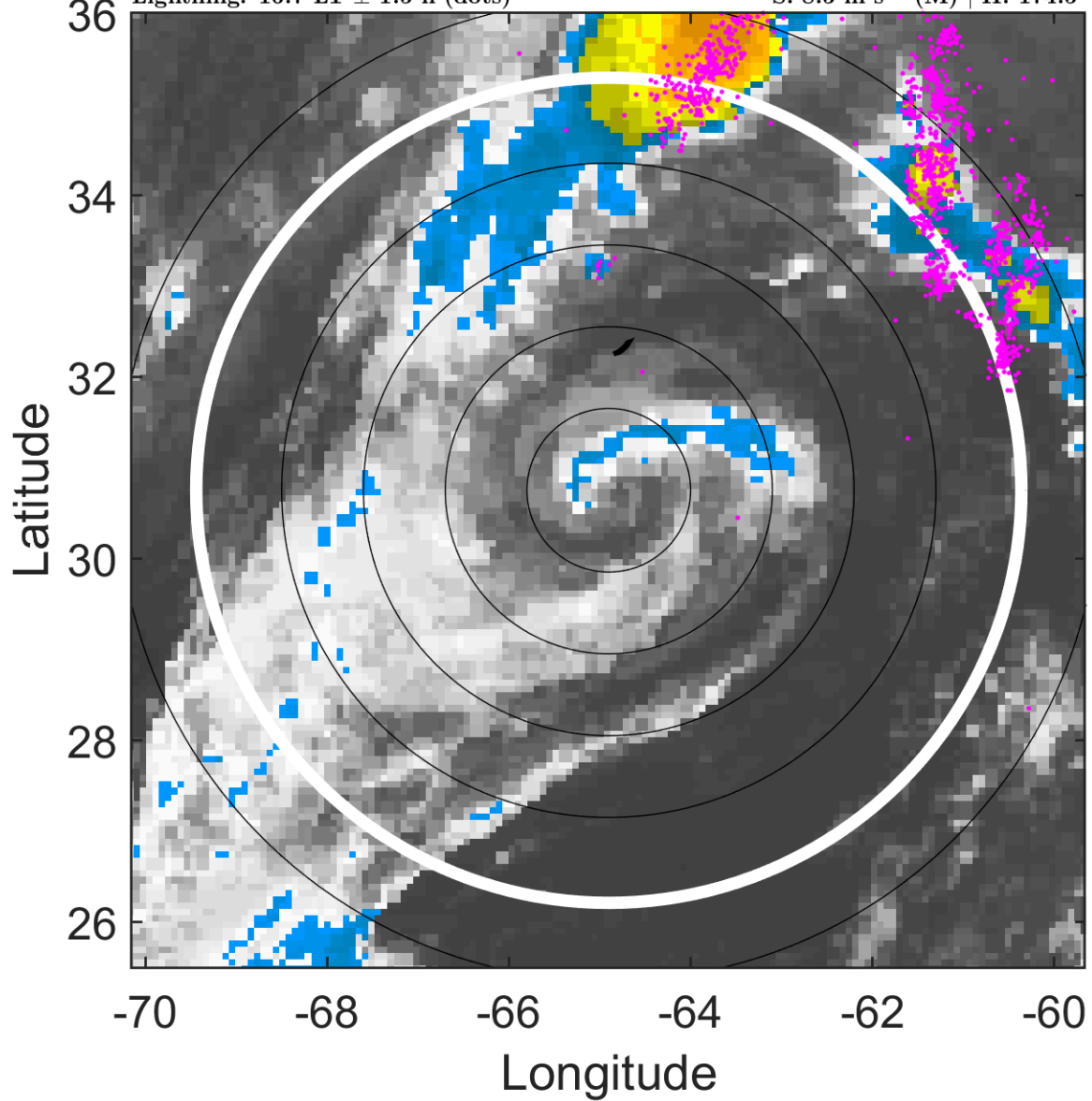
t: 2010102921 (16.7 LT)

Lightning: 16.7 LT \pm 1.5 h (dots)

PT: LLCP | EA: ACT

20L (SHARY) | 60 kt TS

S: 8.5 m s⁻¹ (M) | H: 174.5°



6-h IR BT Differences & Lightning

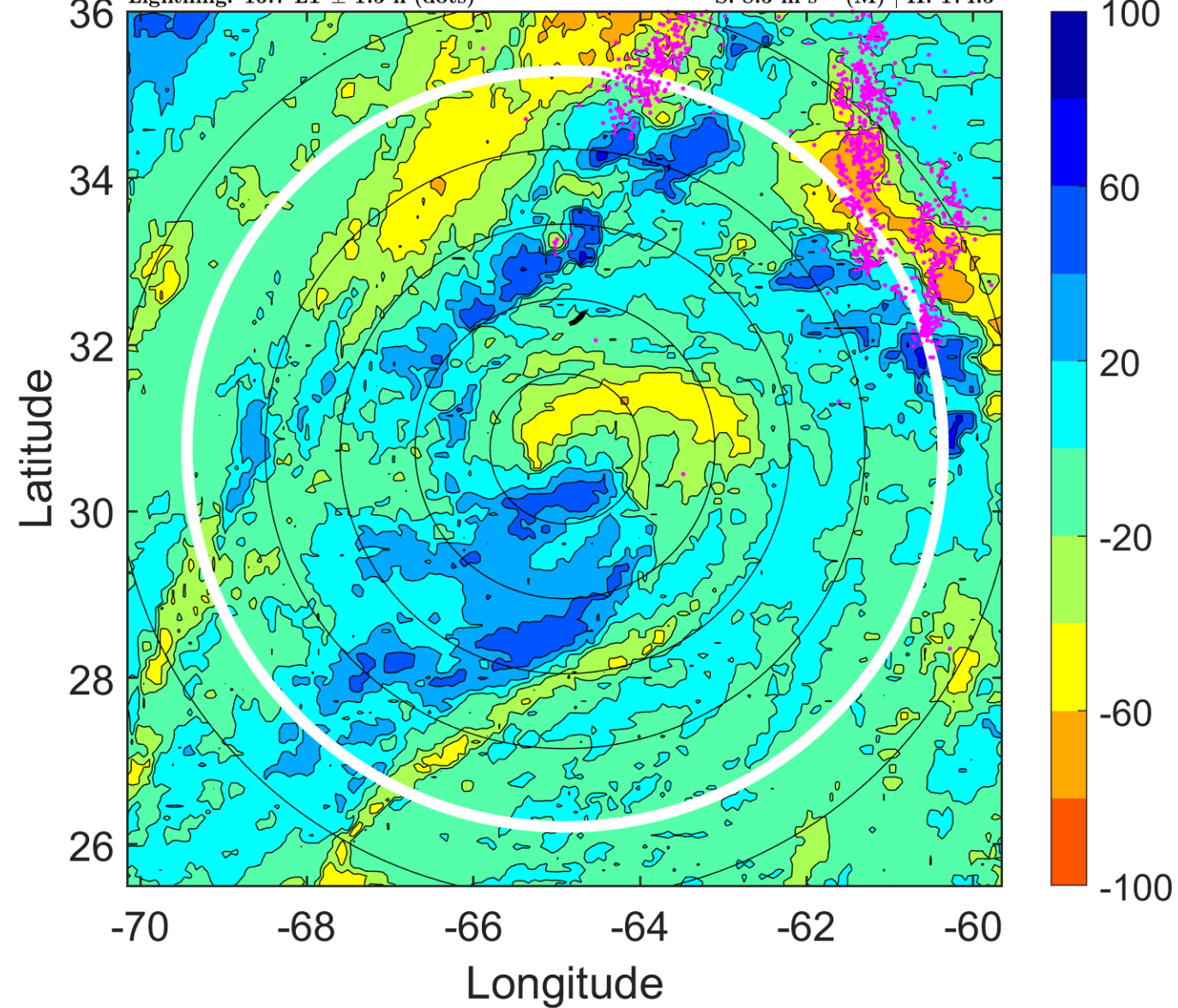
Δ t: 2010102921 (16.7 LT) - 2010102915 (10.6 LT)

Lightning: 16.7 LT \pm 1.5 h (dots)

PT: LLCP | EA: ACT

20L (SHARY) | 60 kt TS

S: 8.5 m s⁻¹ (M) | H: 174.5°



IR BT & Lightning

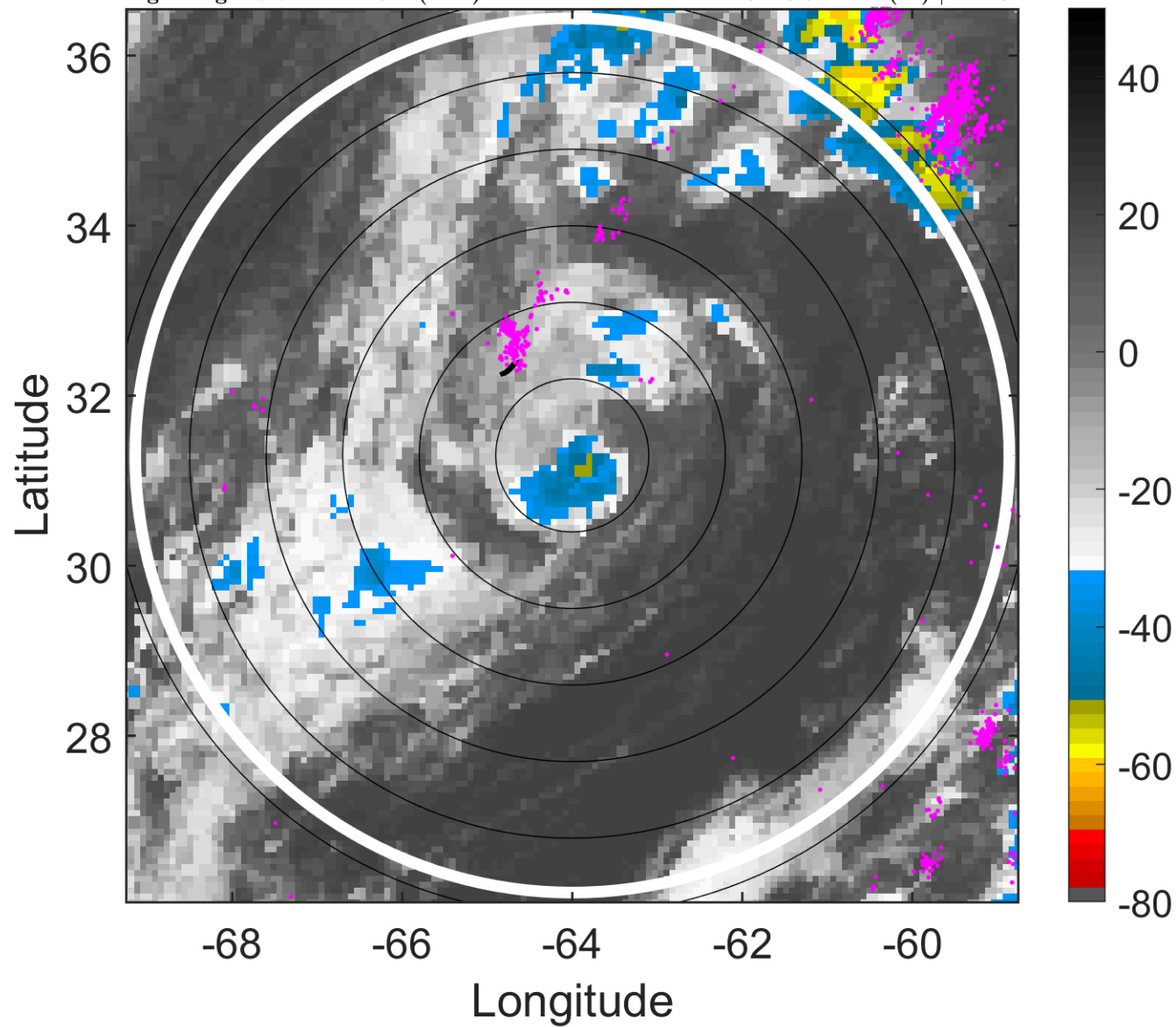
t: 2010103000 (19.7 LT)

Lightning: 19.7 LT \pm 1.5 h (dots)

PT: LLCP | EA: ACT

20L (SHARY) | 65 kt C1

S: 10.6 m s⁻¹ (M) | H: 10°



6-h IR BT Differences & Lightning

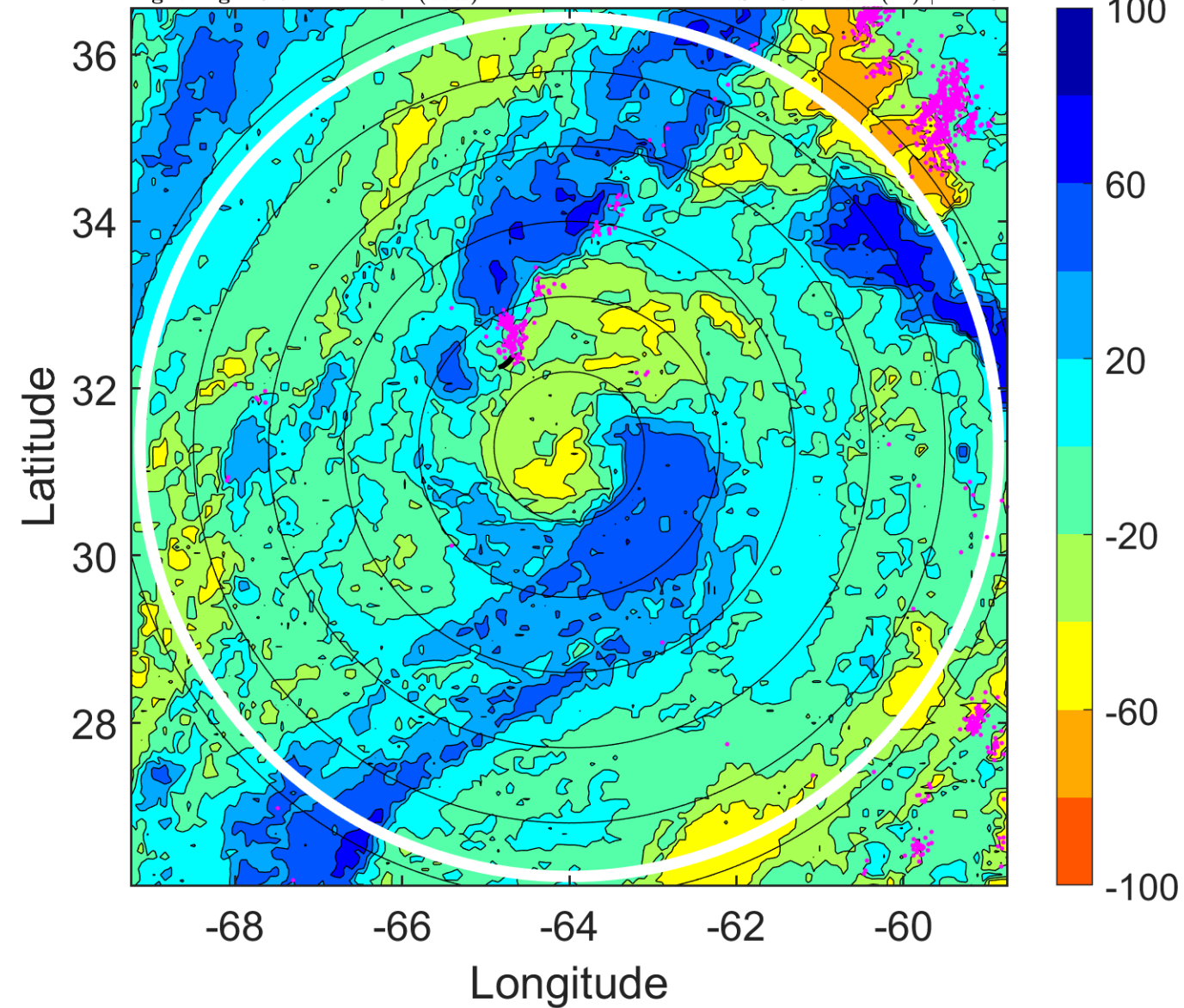
Δ t: 2010103000 (19.7 LT) - 2010102918 (13.6 LT)

Lightning: 19.7 LT \pm 1.5 h (dots)

PT: LLCP | EA: ACT

20L (SHARY) | 65 kt C1

S: 10.6 m s⁻¹ (M) | H: 10°



IR BT & Lightning

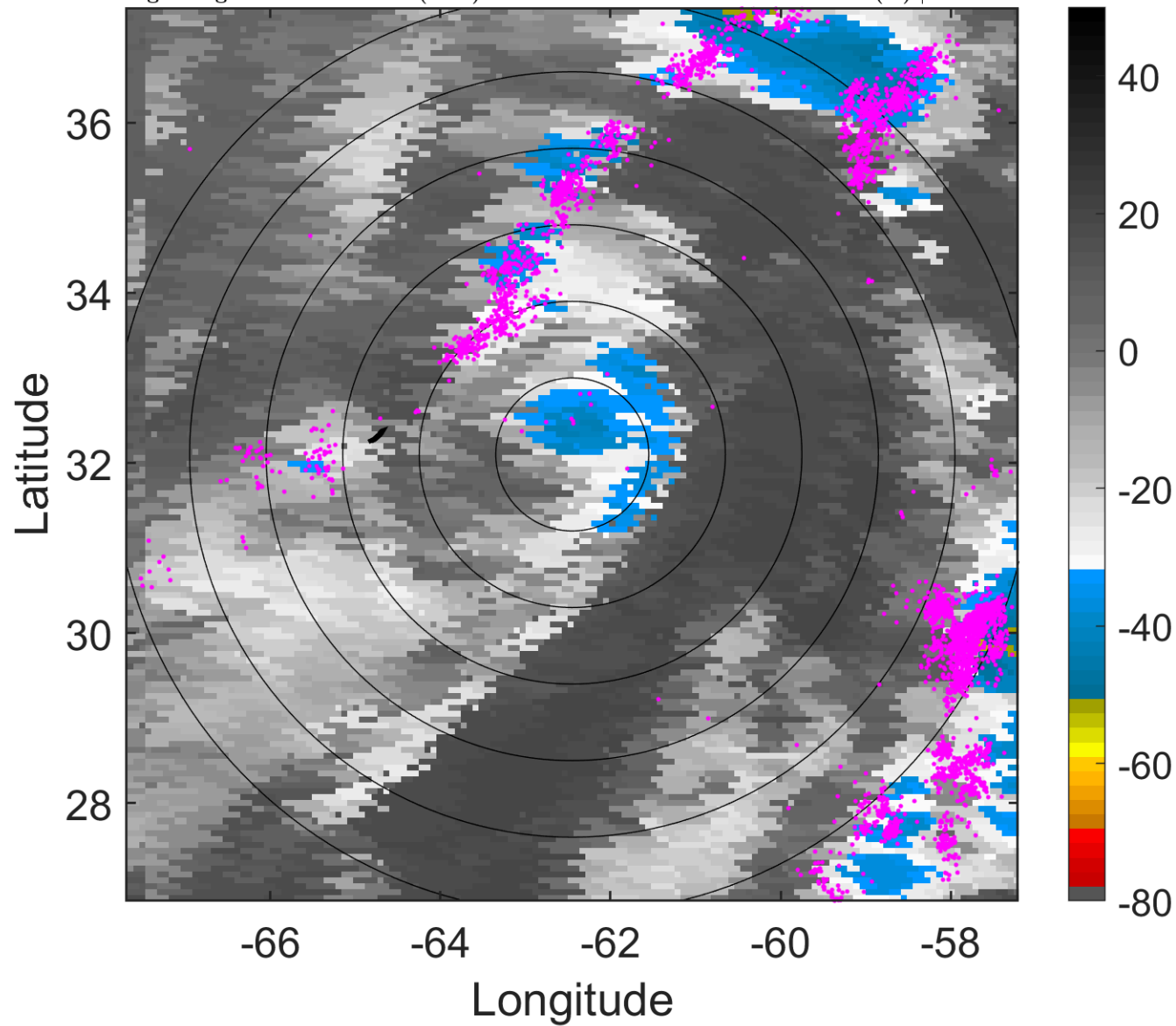
t: 2010103003 (22.8 LT)

Lightning: 22.8 LT \pm 1.5 h (dots)

PT: LLCP | EA: ACT

20L (SHARY) | 65 kt C1

S: 15.7 m s⁻¹ (H) | H: 27.5°



6-h IR BT Differences & Lightning

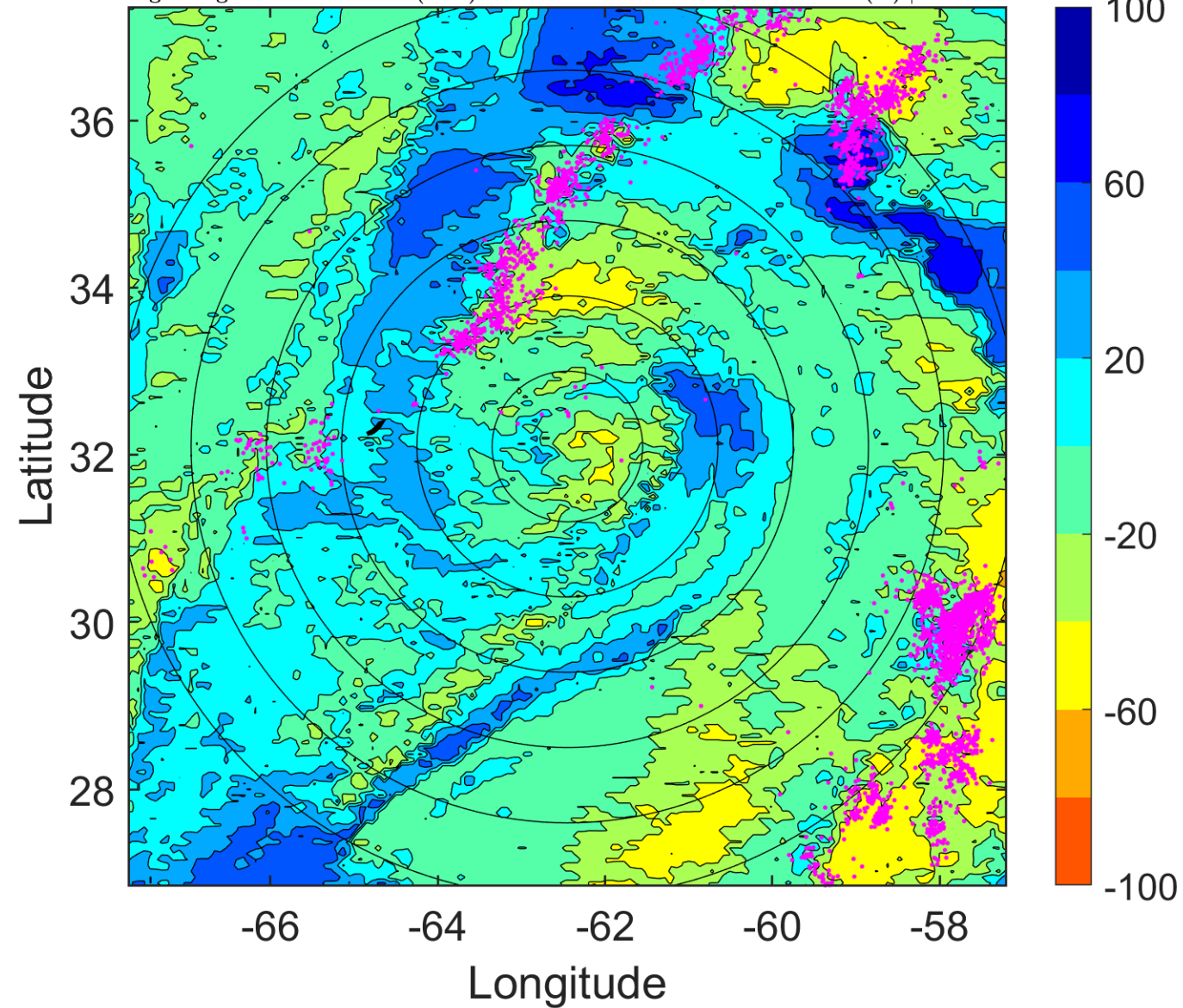
Δ t: 2010103003 (22.8 LT) - 2010102921 (16.7 LT)

Lightning: 22.8 LT \pm 1.5 h (dots)

PT: LLCP | EA: ACT

20L (SHARY) | 65 kt C1

S: 15.7 m s⁻¹ (H) | H: 27.5°



IR BT & Lightning

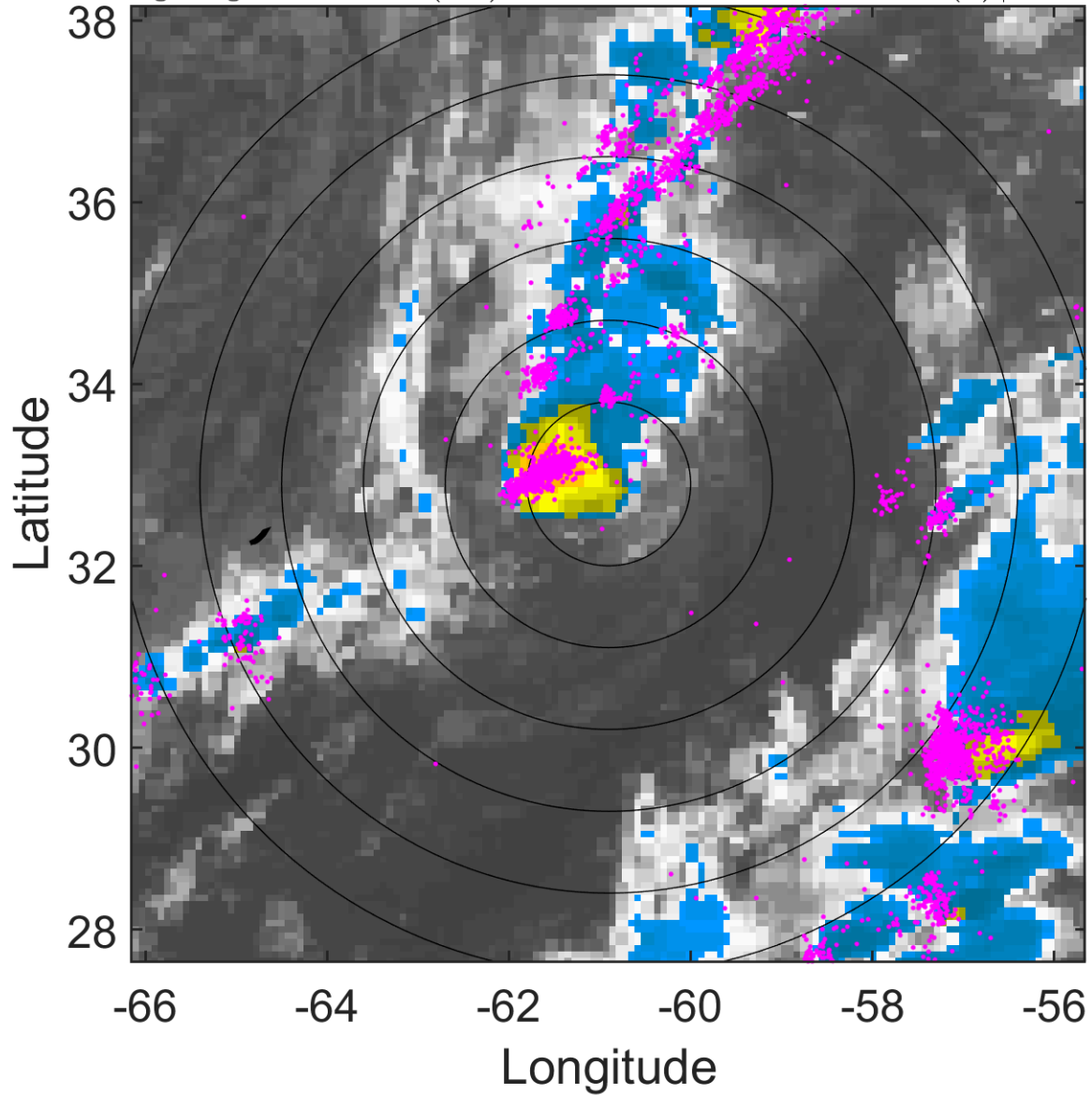
t: 2010103006 (1.9 LT)

Lightning: 1.9 LT \pm 1.5 h (dots)

PT: LLCP | EA: ACT

20L (SHARY) | 65 kt C1

S: 20.7 m s⁻¹ (H) | H: 45°



6-h IR BT Differences & Lightning

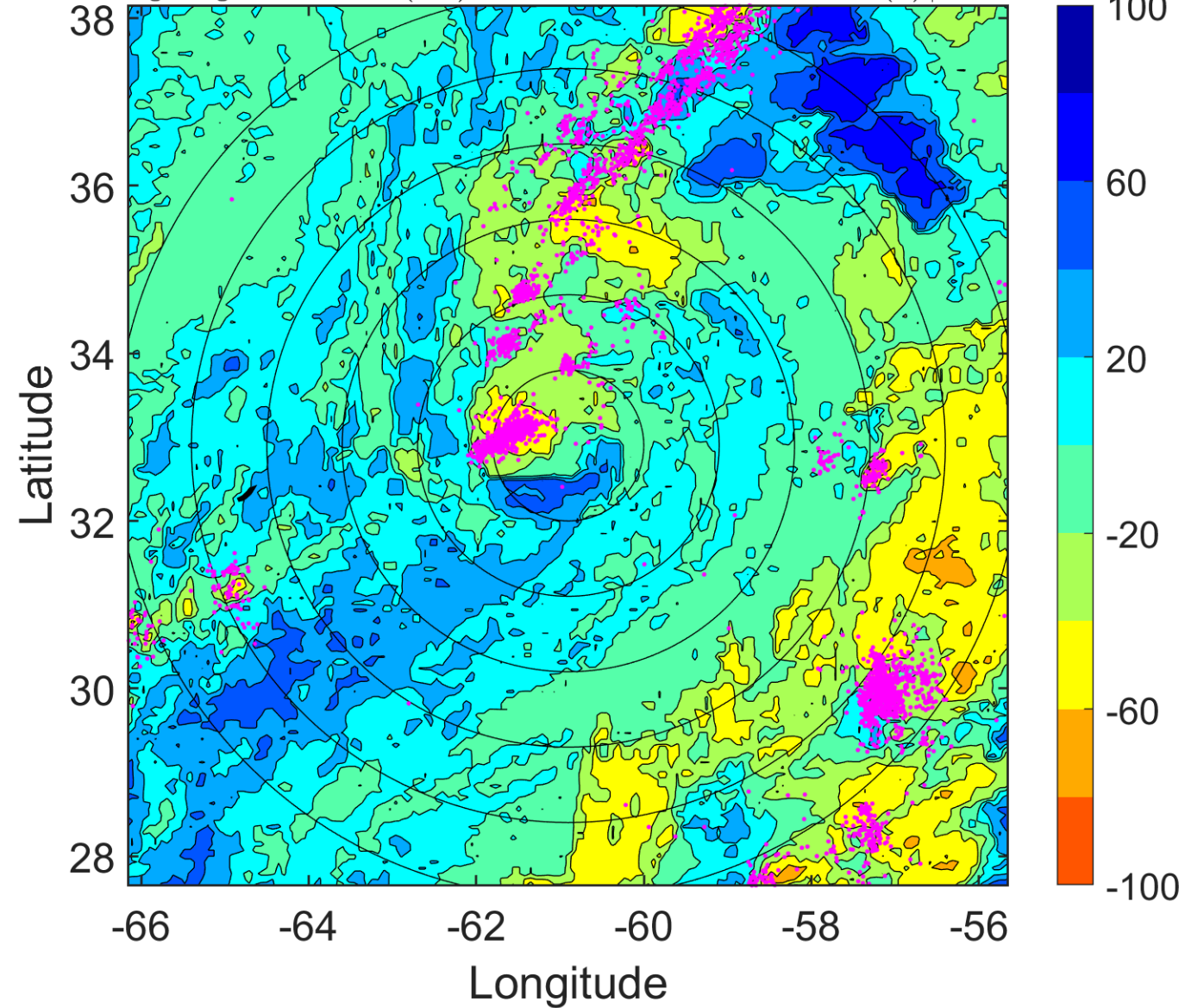
Δ t: 2010103006 (1.9 LT) - 2010103000 (19.7 LT)

Lightning: 1.9 LT \pm 1.5 h (dots)

PT: LLCP | EA: ACT

20L (SHARY) | 65 kt C1

S: 20.7 m s⁻¹ (H) | H: 45°



IR BT & Lightning

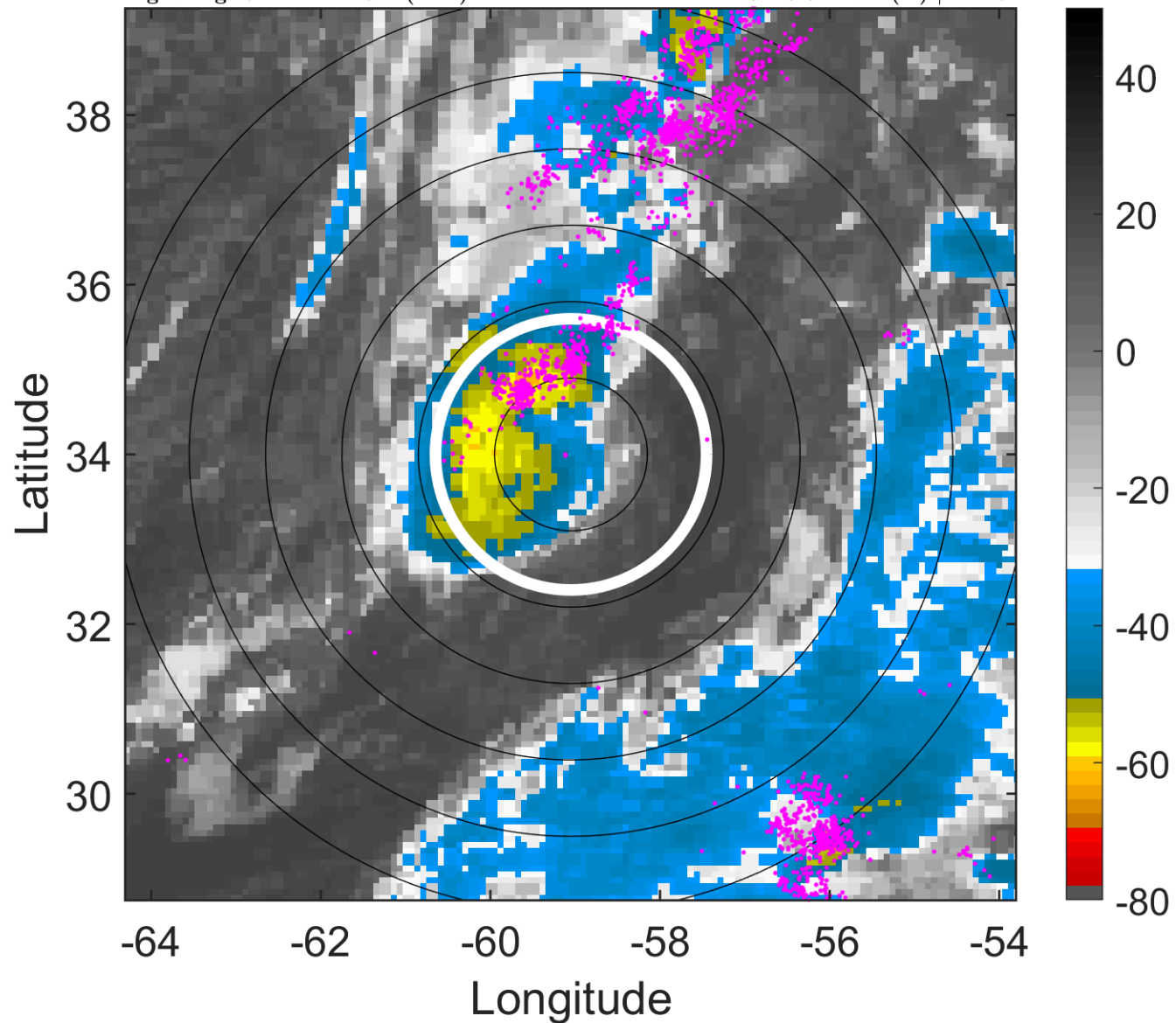
t: 2010103009 (5.1 LT)

Lightning: 5.1 LT \pm 1.5 h (dots)

PT: LLCP | EA: ACT

20L (SHARY) | 65 kt C1

S: 19.3 m s⁻¹ (H) | H: 45°



6-h IR BT Differences & Lightning

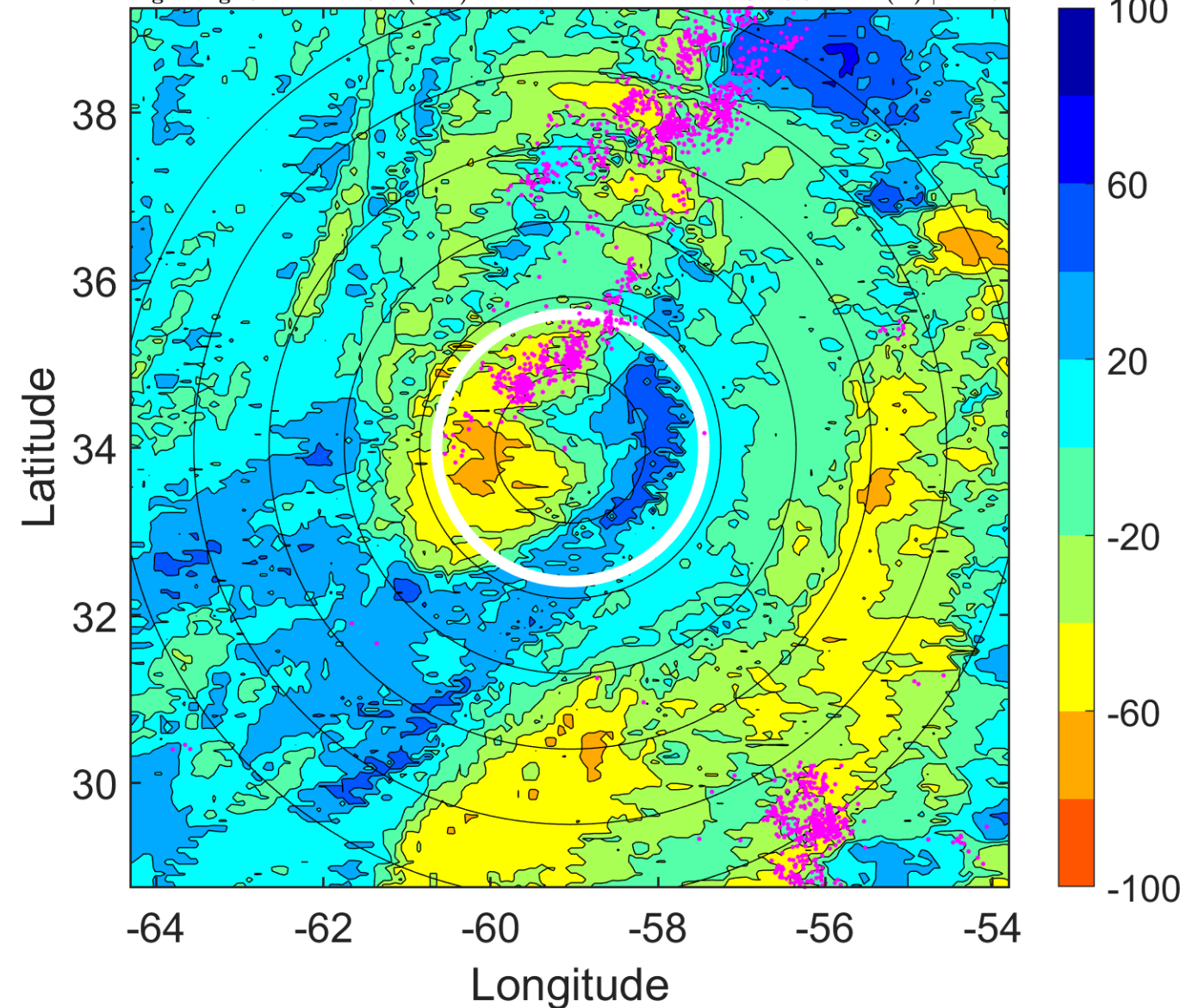
Δ t: 2010103009 (5.1 LT) - 2010103003 (22.8 LT)

Lightning: 5.1 LT \pm 1.5 h (dots)

PT: LLCP | EA: ACT

20L (SHARY) | 65 kt C1

S: 19.3 m s⁻¹ (H) | H: 45°



IR BT & Lightning

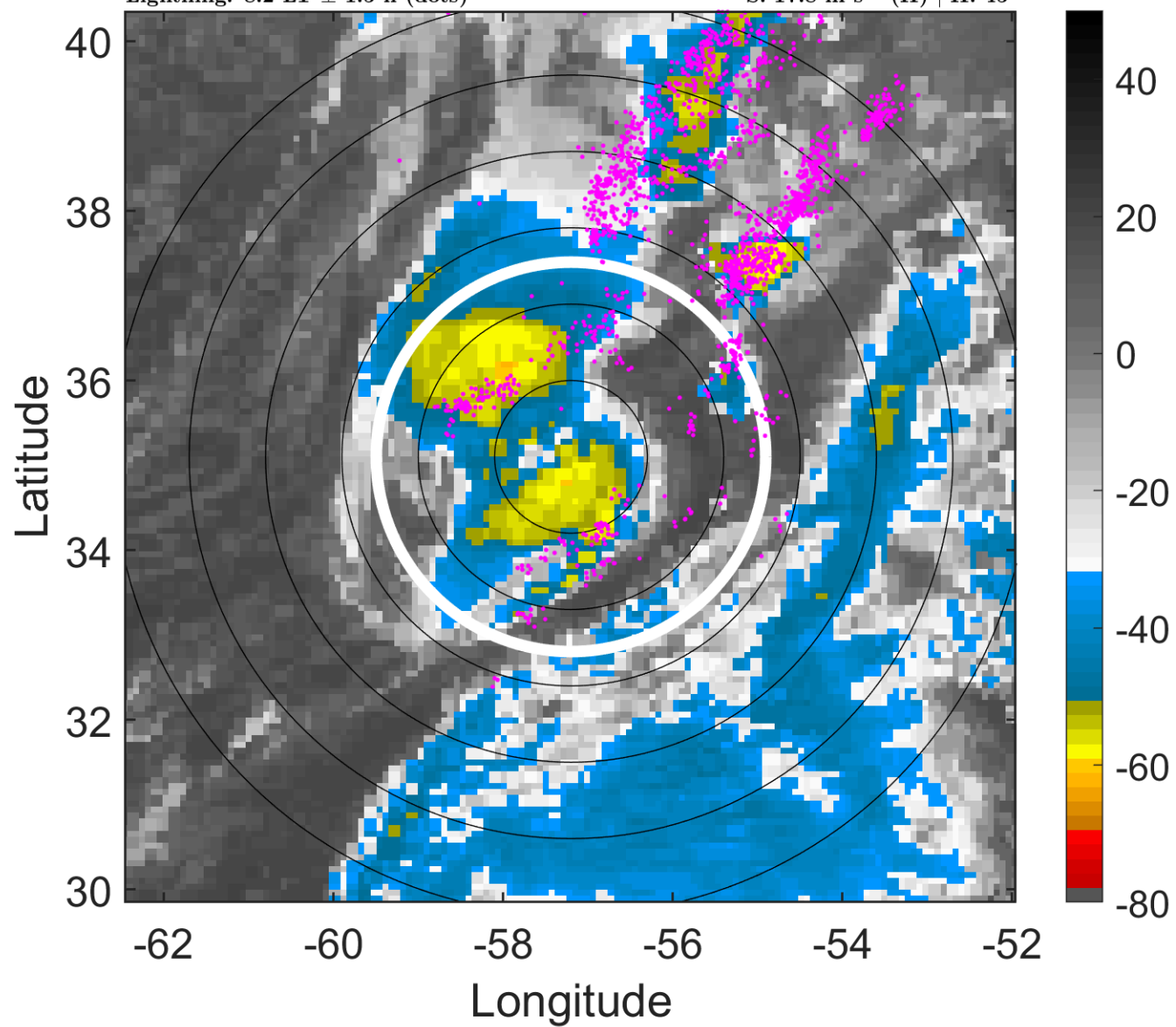
t: 2010103012 (8.2 LT)

Lightning: 8.2 LT \pm 1.5 h (dots)

PT: LLCP | EA: ACT

20L (SHARY) | 65 kt C1

S: 17.8 m s⁻¹ (H) | H: 45°



6-h IR BT Differences & Lightning

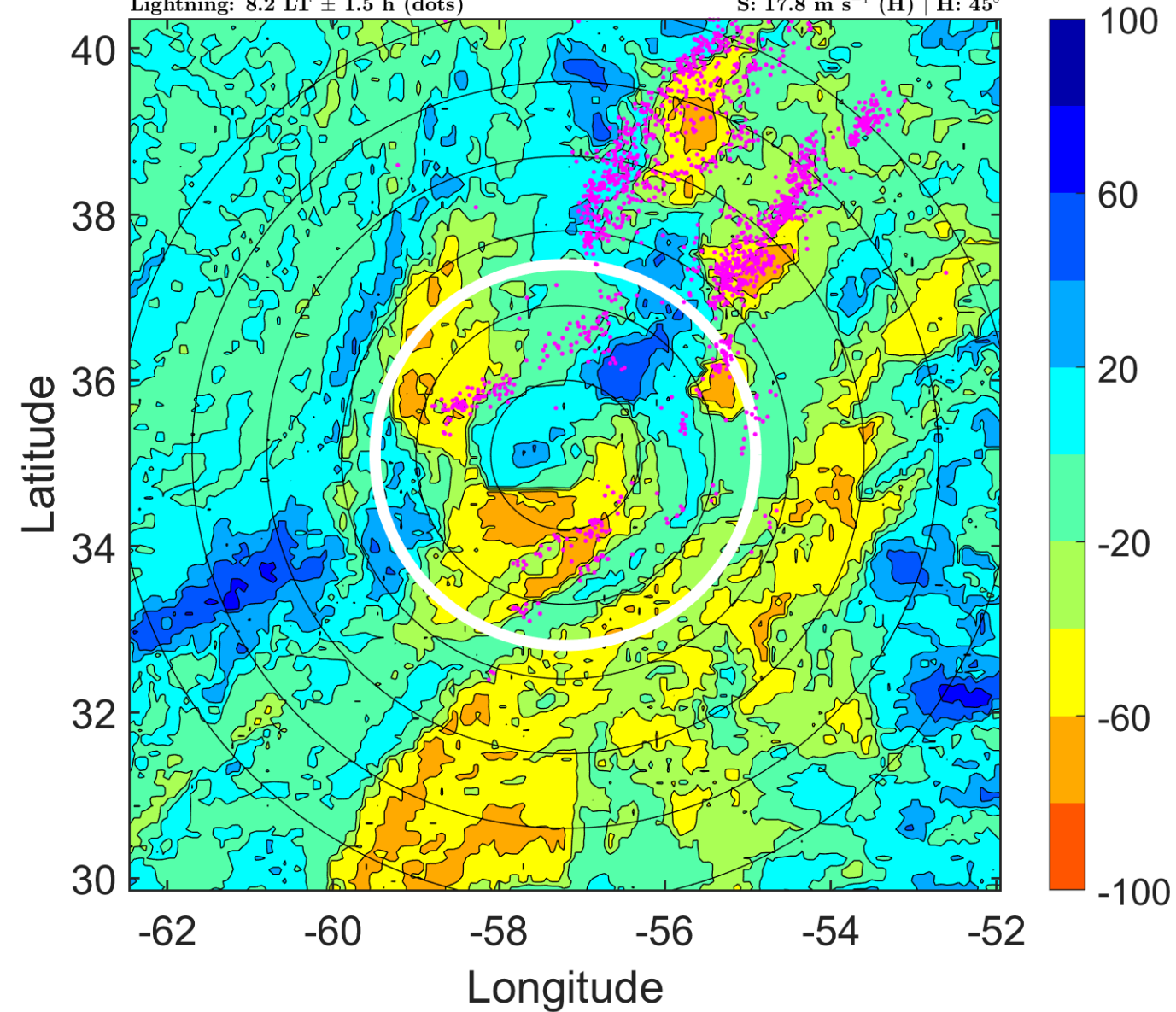
Δ t: 2010103012 (8.2 LT) - 2010103006 (1.9 LT)

Lightning: 8.2 LT \pm 1.5 h (dots)

PT: LLCP | EA: ACT

20L (SHARY) | 65 kt C1

S: 17.8 m s⁻¹ (H) | H: 45°



IR BT & Lightning

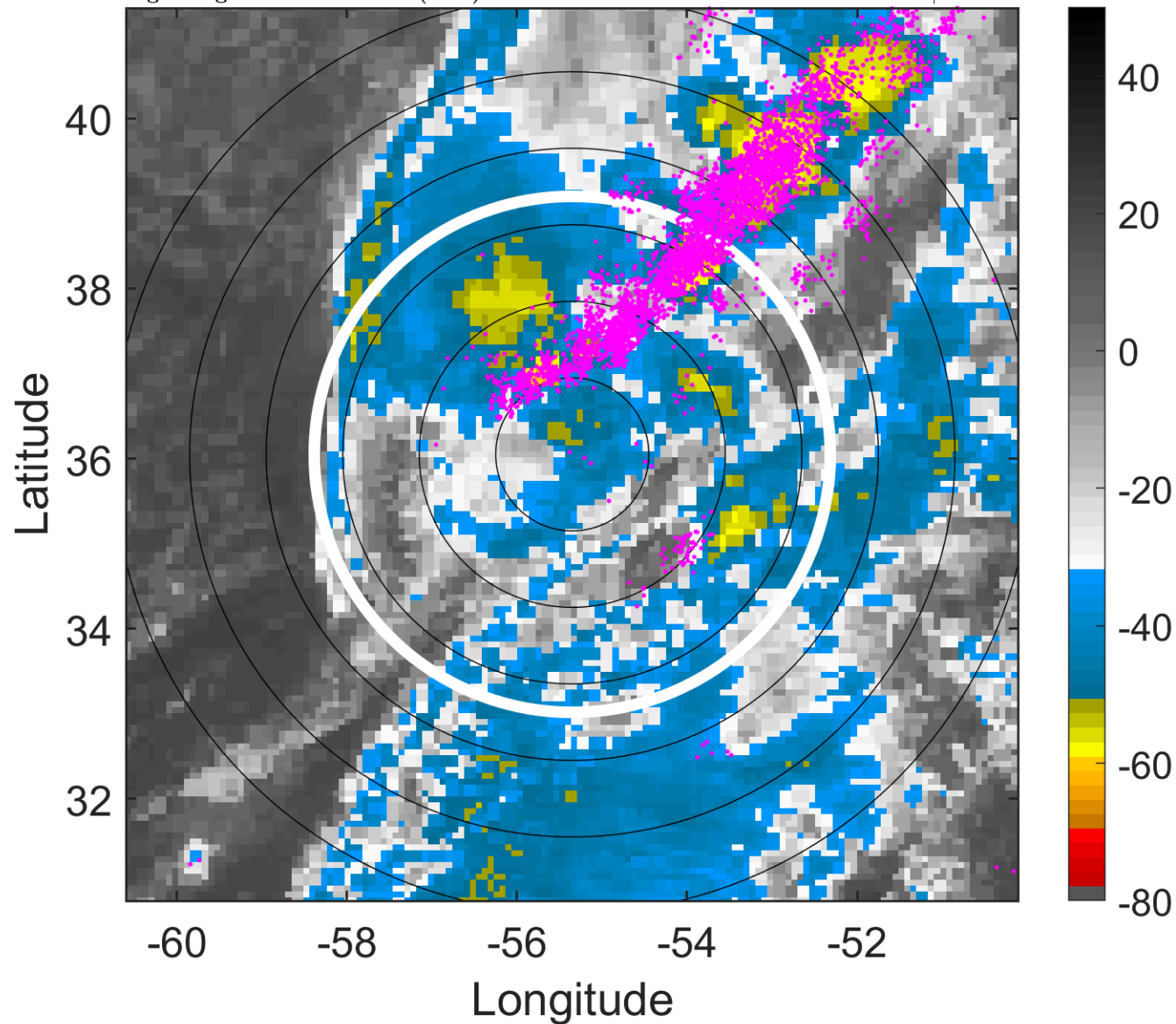
t: 2010103015 (11.3 LT)

Lightning: 11.3 LT \pm 1.5 h (dots)

PT: LLCP | EA: ACT

20L (SHARY) | 60 kt TS

S: null | H: null



6-h IR BT Differences & Lightning

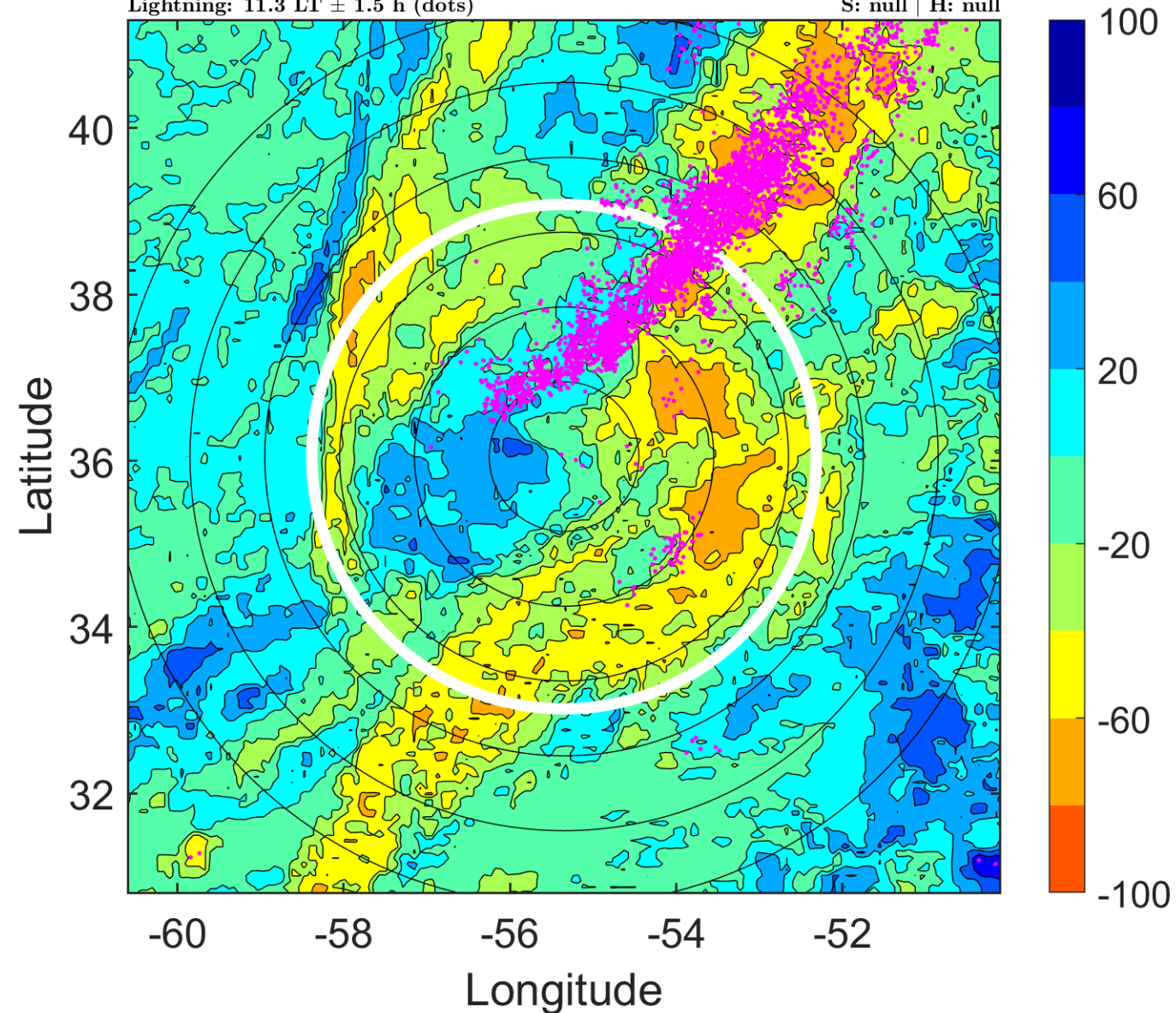
Δ t: 2010103015 (11.3 LT) - 2010103009 (5.1 LT)

Lightning: 11.3 LT \pm 1.5 h (dots)

PT: LLCP | EA: ACT

20L (SHARY) | 60 kt TS

S: null | H: null



IR BT & Lightning

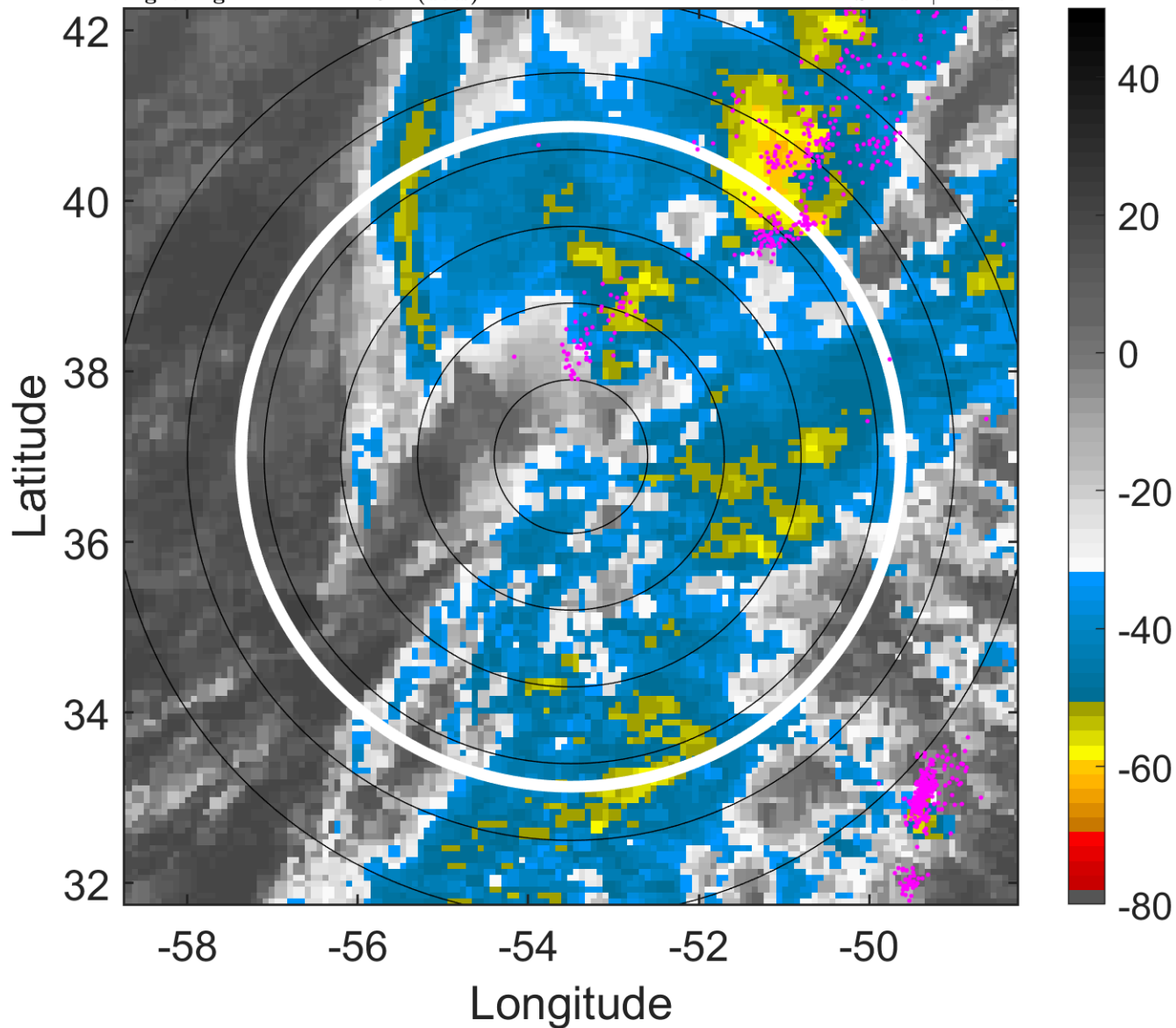
t: 2010103018 (14.4 LT)

Lightning: 14.4 LT \pm 1.5 h (dots)

PT: LLCP | EA: ACT

20L (SHARY) | 55 kt EX

S: null | H: null



6-h IR BT Differences & Lightning

Δ t: 2010103018 (14.4 LT) - 2010103012 (8.2 LT)

Lightning: 14.4 LT \pm 1.5 h (dots)

PT: LLCP | EA: ACT

20L (SHARY) | 55 kt EX

S: null | H: null

