

IR BT & Lightning

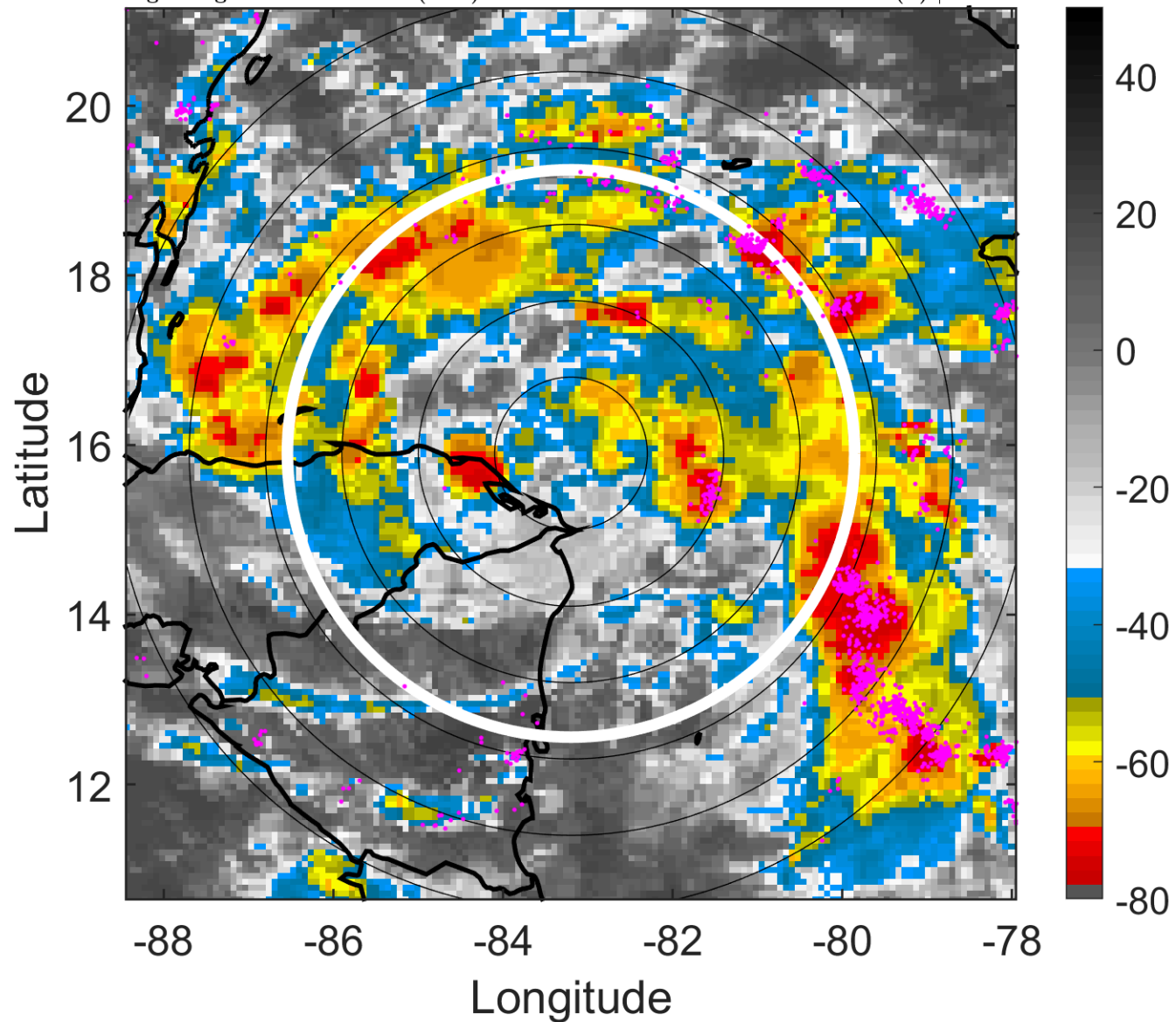
t: 2008101418 (12.5 LT)

Lightning: 12.5 LT \pm 1.5 h (dots)

PT: LLCP | EA: ACT

16L (SIXTEEN) | 25 kt TD

S: 1.9 m s⁻¹ (L) | H: 99°



6-h IR BT Differences & Lightning

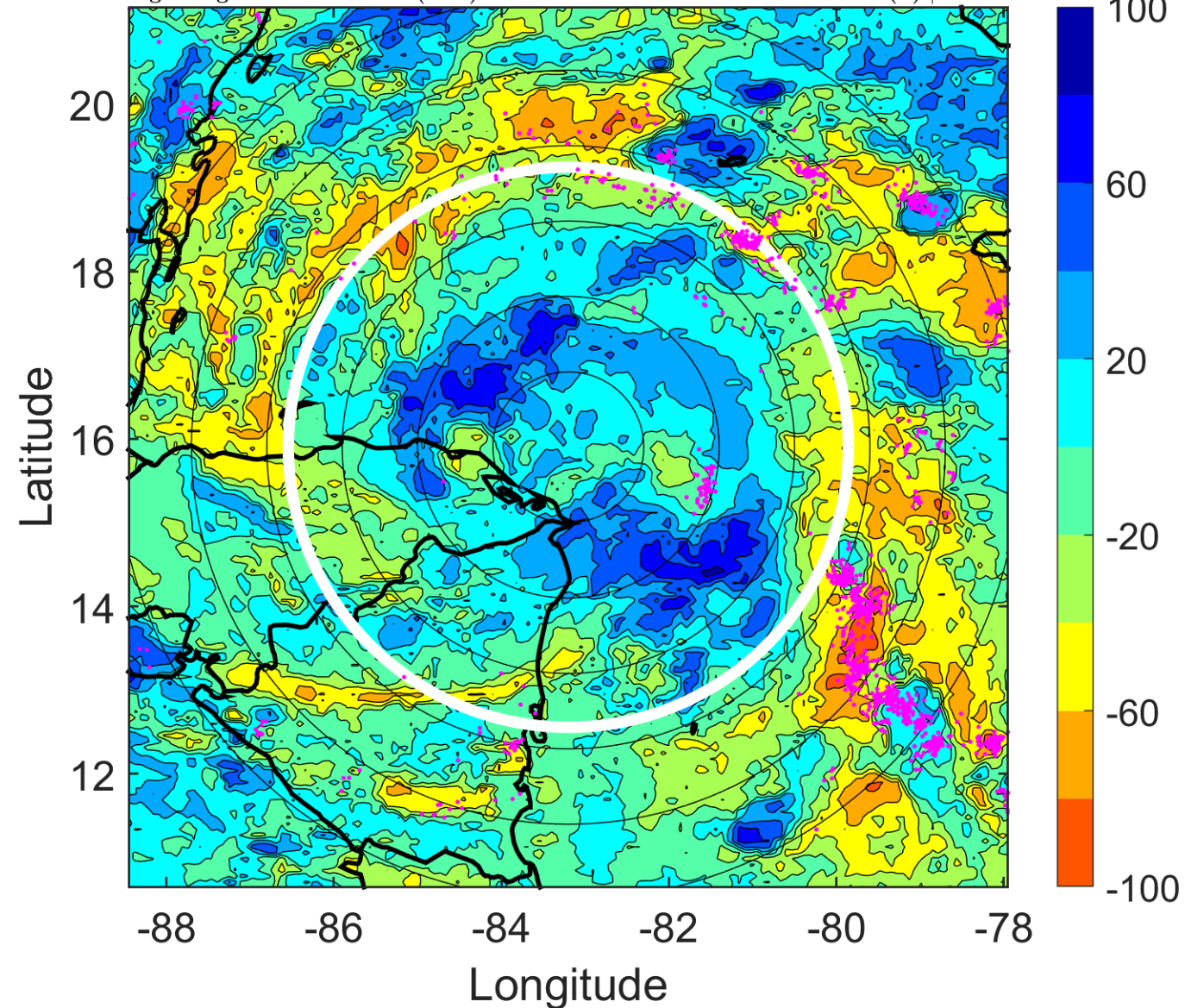
Δ t: 2008101418 (12.5 LT) - 2008101412 (6.5 LT)

Lightning: 12.5 LT \pm 1.5 h (dots)

PT: LLCP | EA: ACT

16L (SIXTEEN) | 25 kt TD

S: 1.9 m s⁻¹ (L) | H: 99°



IR BT & Lightning

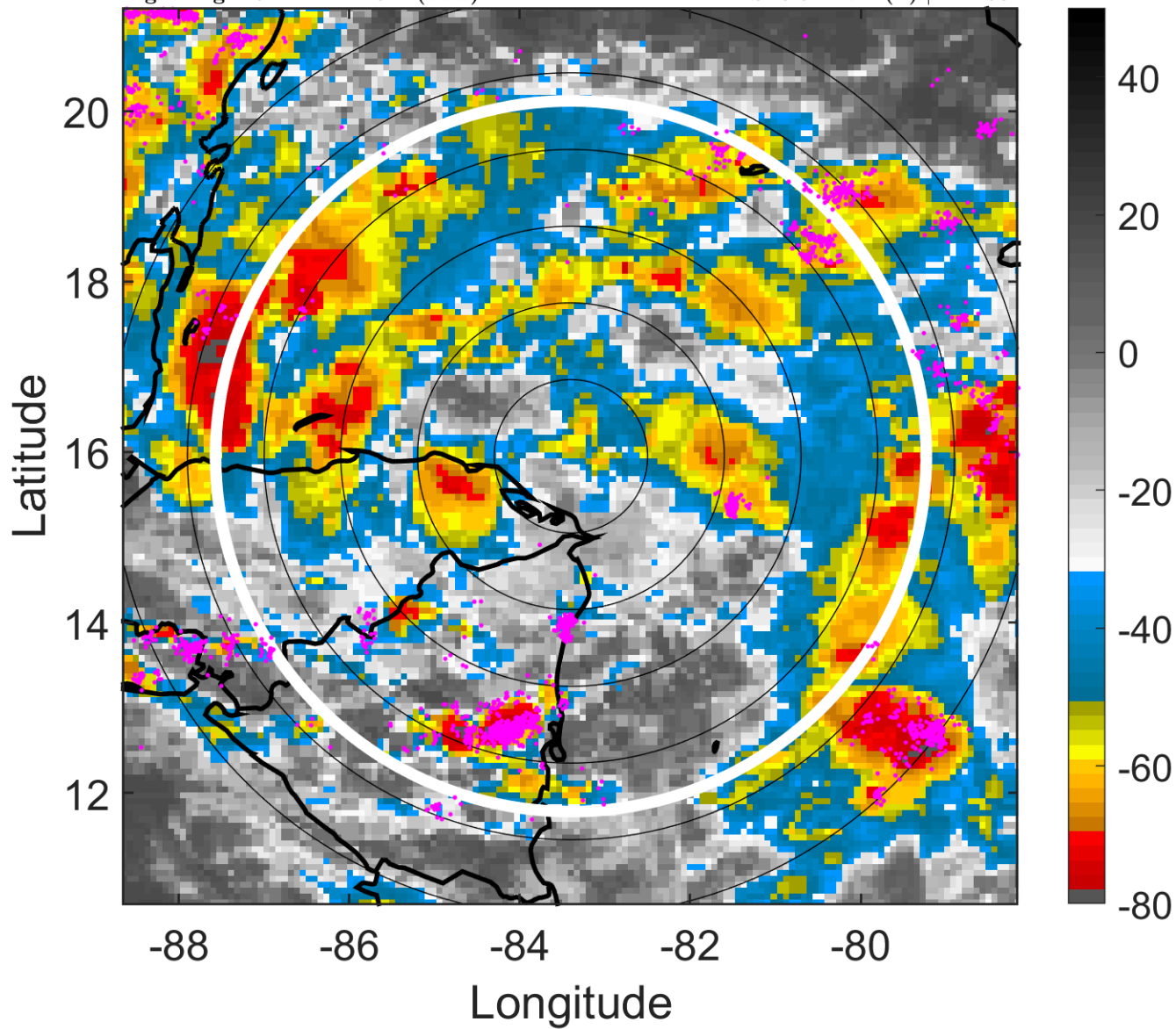
t: 2008101421 (15.4 LT)

Lightning: 15.4 LT \pm 1.5 h (dots)

PT: LLCP | EA: ACT

16L (SIXTEEN) | 25 kt TD

S: 3.3 m s⁻¹ (L) | H: 103°



6-h IR BT Differences & Lightning

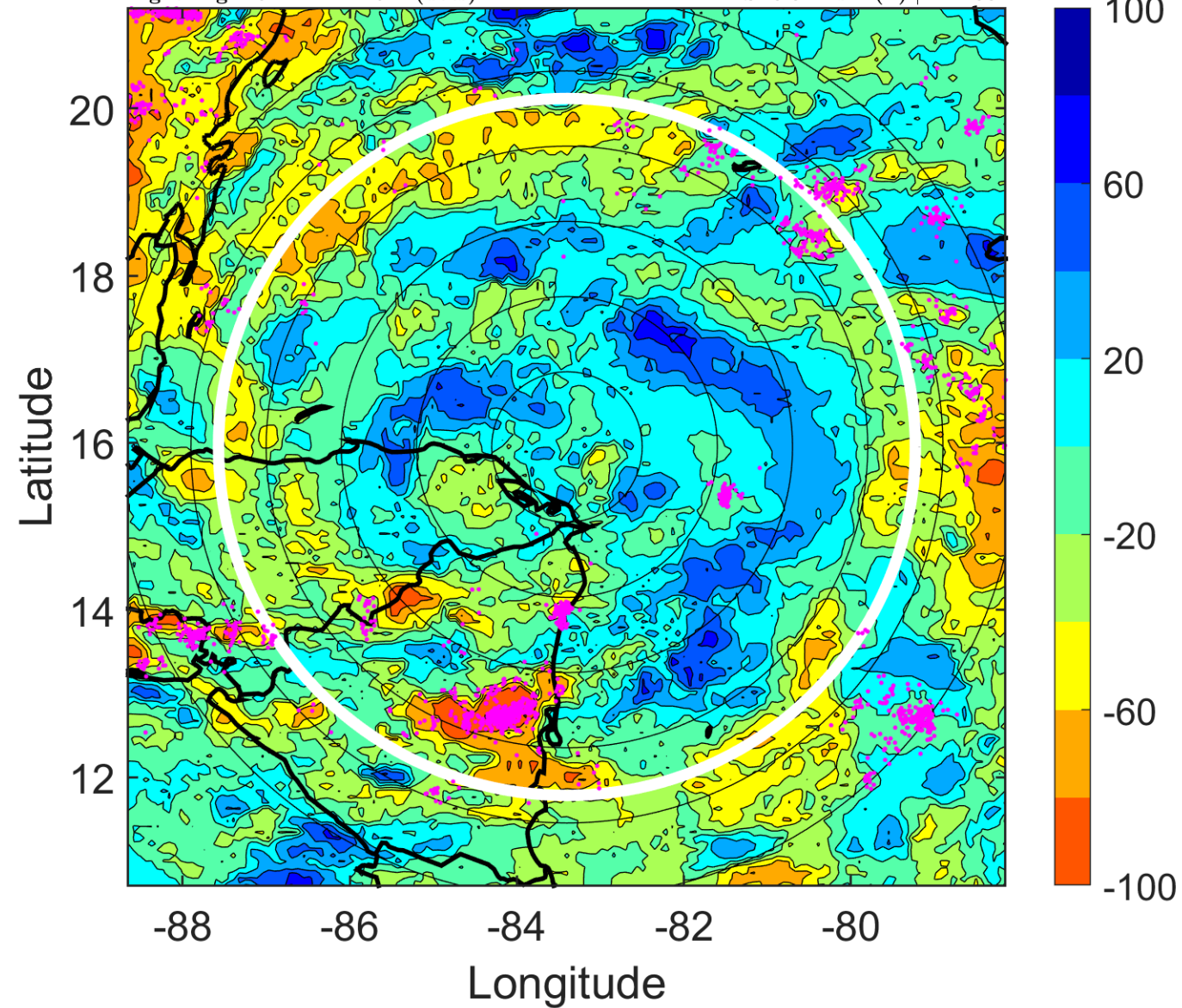
Δ t: 2008101421 (15.4 LT) - 2008101415 (9.5 LT)

Lightning: 15.4 LT \pm 1.5 h (dots)

PT: LLCP | EA: ACT

16L (SIXTEEN) | 25 kt TD

S: 3.3 m s⁻¹ (L) | H: 103°



IR BT & Lightning

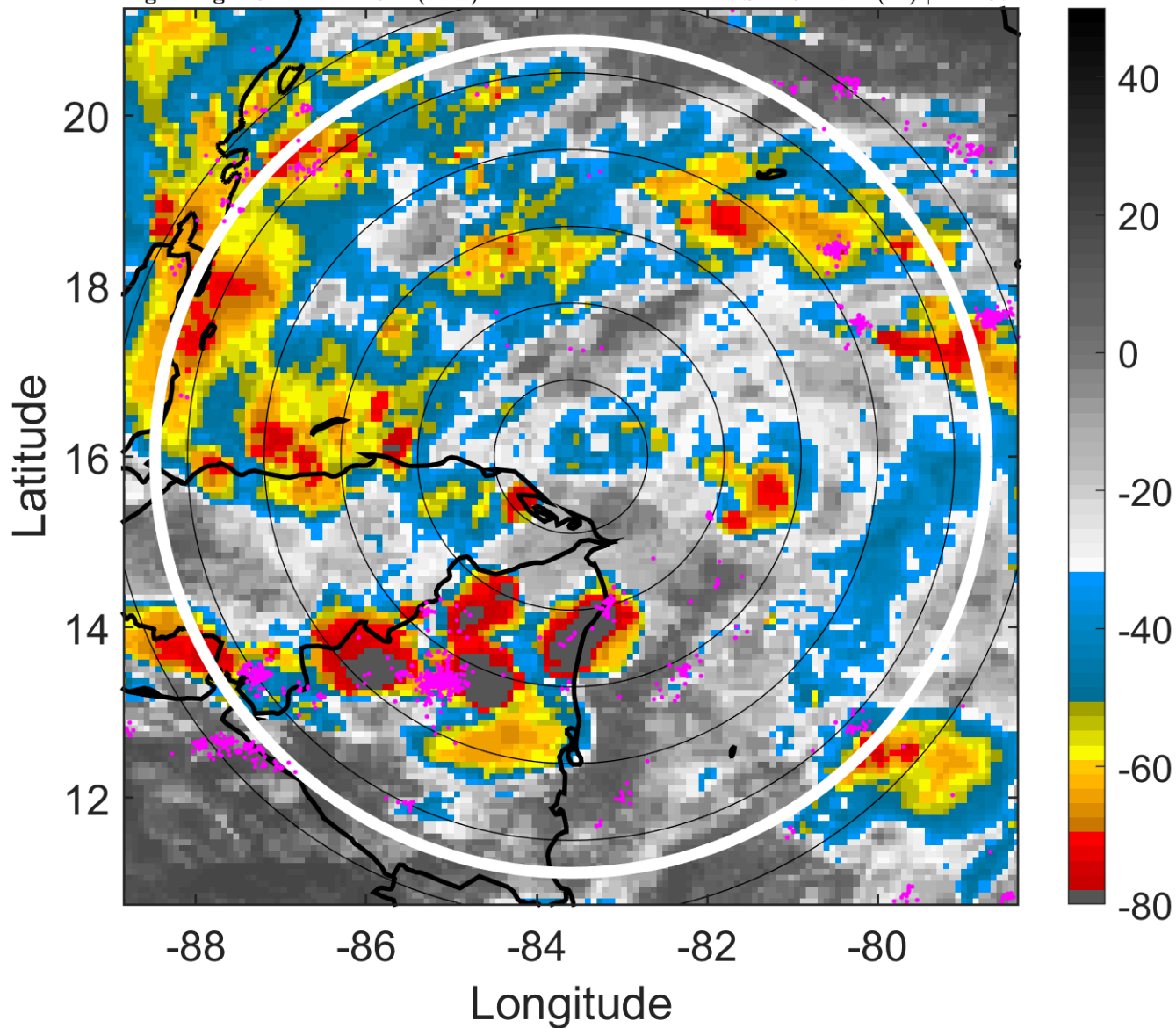
t: 2008101500 (18.4 LT)

Lightning: 18.4 LT \pm 1.5 h (dots)

PT: LLCP | EA: ACT

16L (SIXTEEN) | 25 kt TD

S: 4.6 m s⁻¹ (M) | H: 107°



6-h IR BT Differences & Lightning

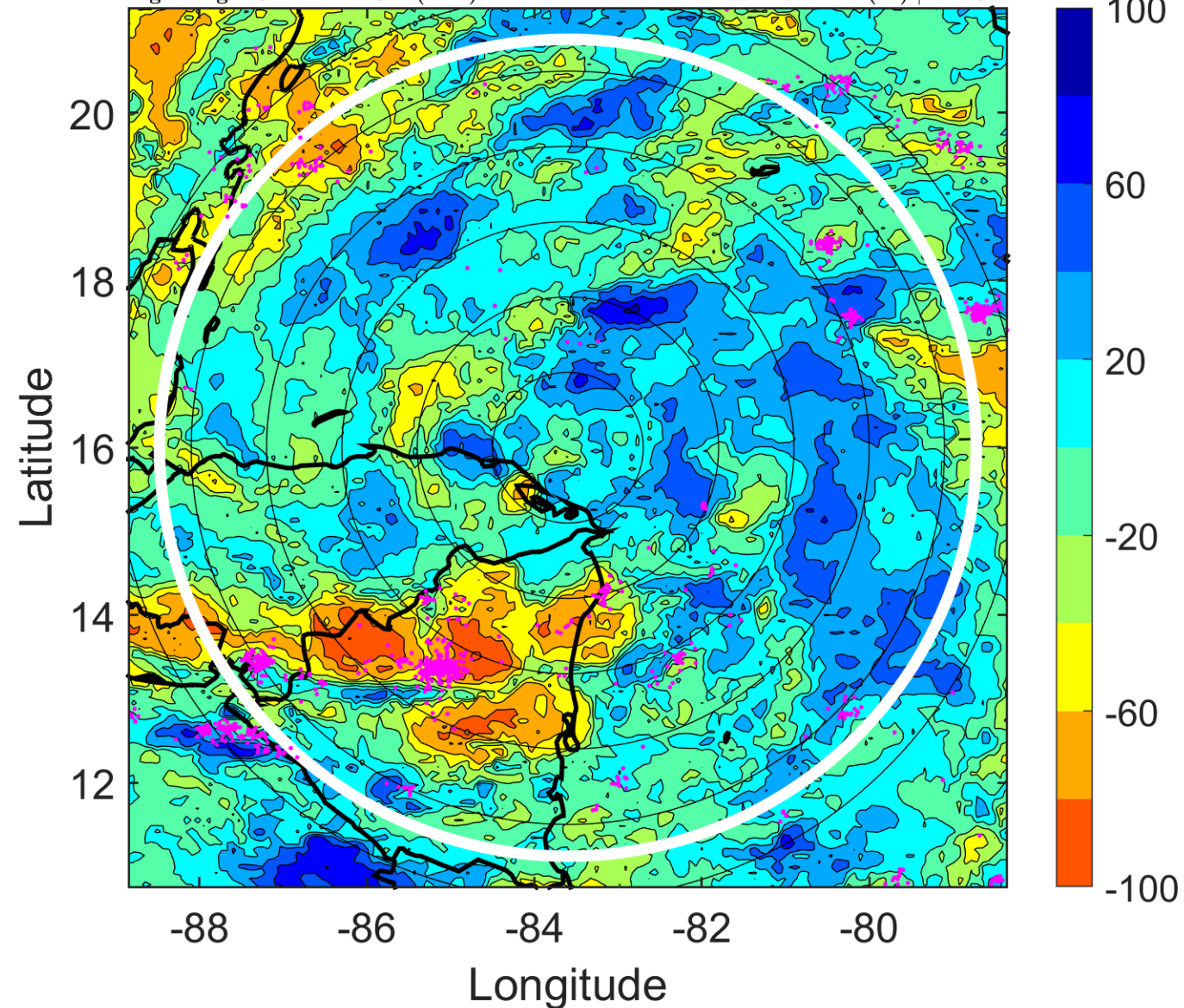
Δ t: 2008101500 (18.4 LT) - 2008101418 (12.5 LT)

Lightning: 18.4 LT \pm 1.5 h (dots)

PT: LLCP | EA: ACT

16L (SIXTEEN) | 25 kt TD

S: 4.6 m s⁻¹ (M) | H: 107°



IR BT & Lightning

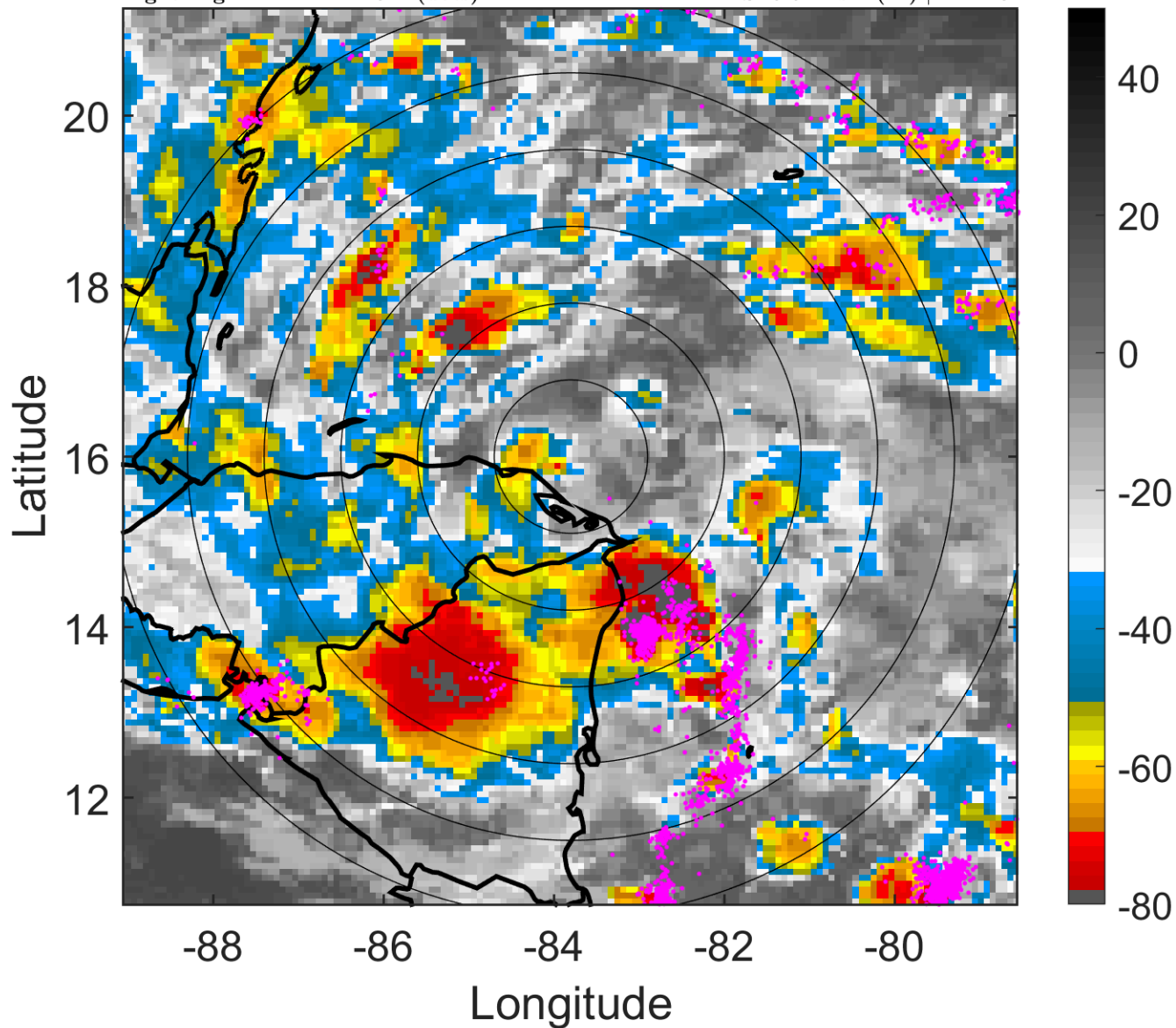
t: 2008101503 (21.4 LT)

Lightning: 21.4 LT \pm 1.5 h (dots)

PT: LLCP | EA: ACT

16L (SIXTEEN) | 25 kt TD

S: 5.6 m s⁻¹ (M) | H: 110°



6-h IR BT Differences & Lightning

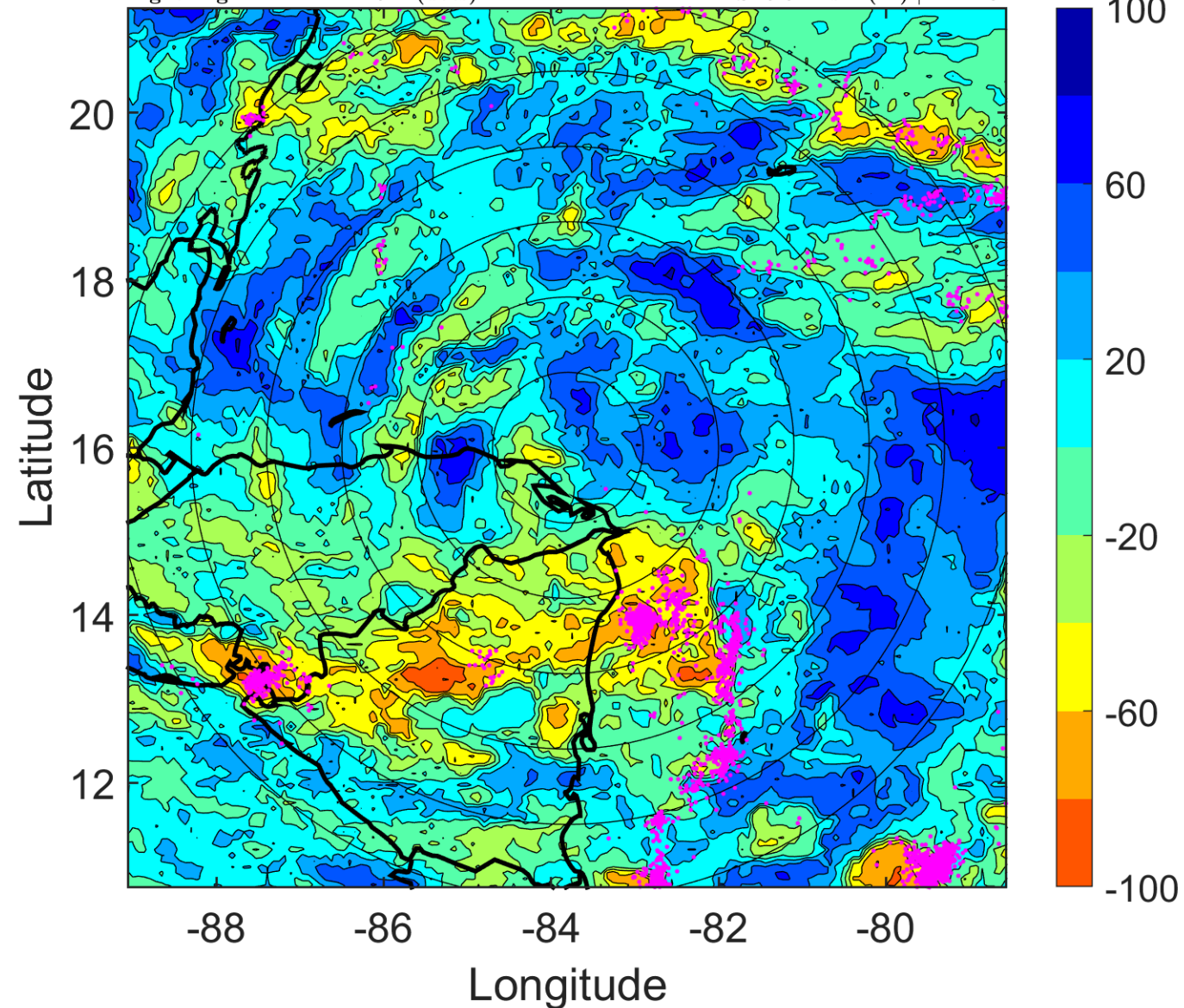
Δ t: 2008101503 (21.4 LT) - 2008101421 (15.4 LT)

Lightning: 21.4 LT \pm 1.5 h (dots)

PT: LLCP | EA: ACT

16L (SIXTEEN) | 25 kt TD

S: 5.6 m s⁻¹ (M) | H: 110°



IR BT & Lightning

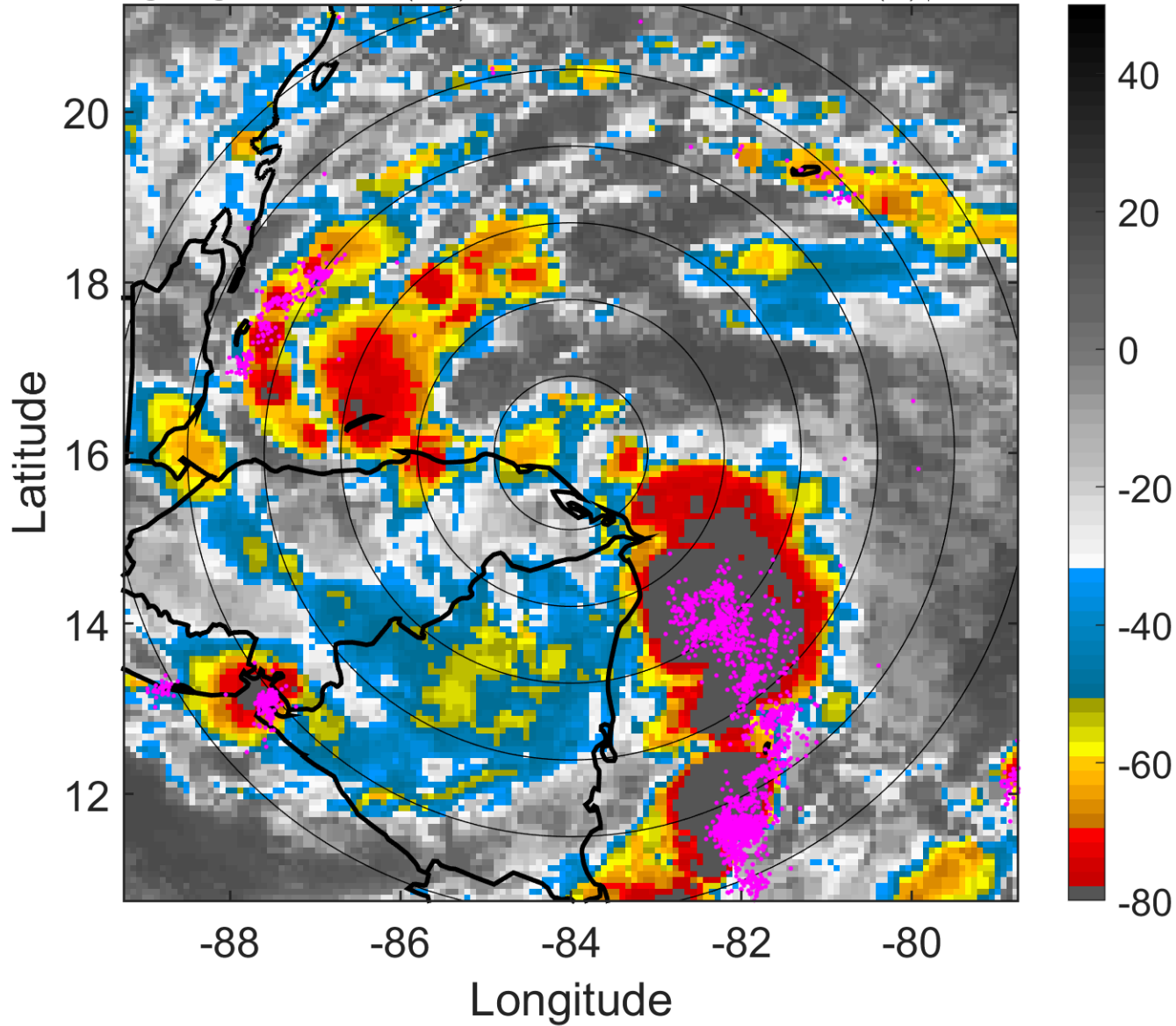
t: 2008101506 (0.4 LT)

Lightning: 0.4 LT \pm 1.5 h (dots)

LAND EFFECTS

16L (SIXTEEN) | 25 kt TD

S: 6.5 m s⁻¹ (M) | H: 113°



6-h IR BT Differences & Lightning

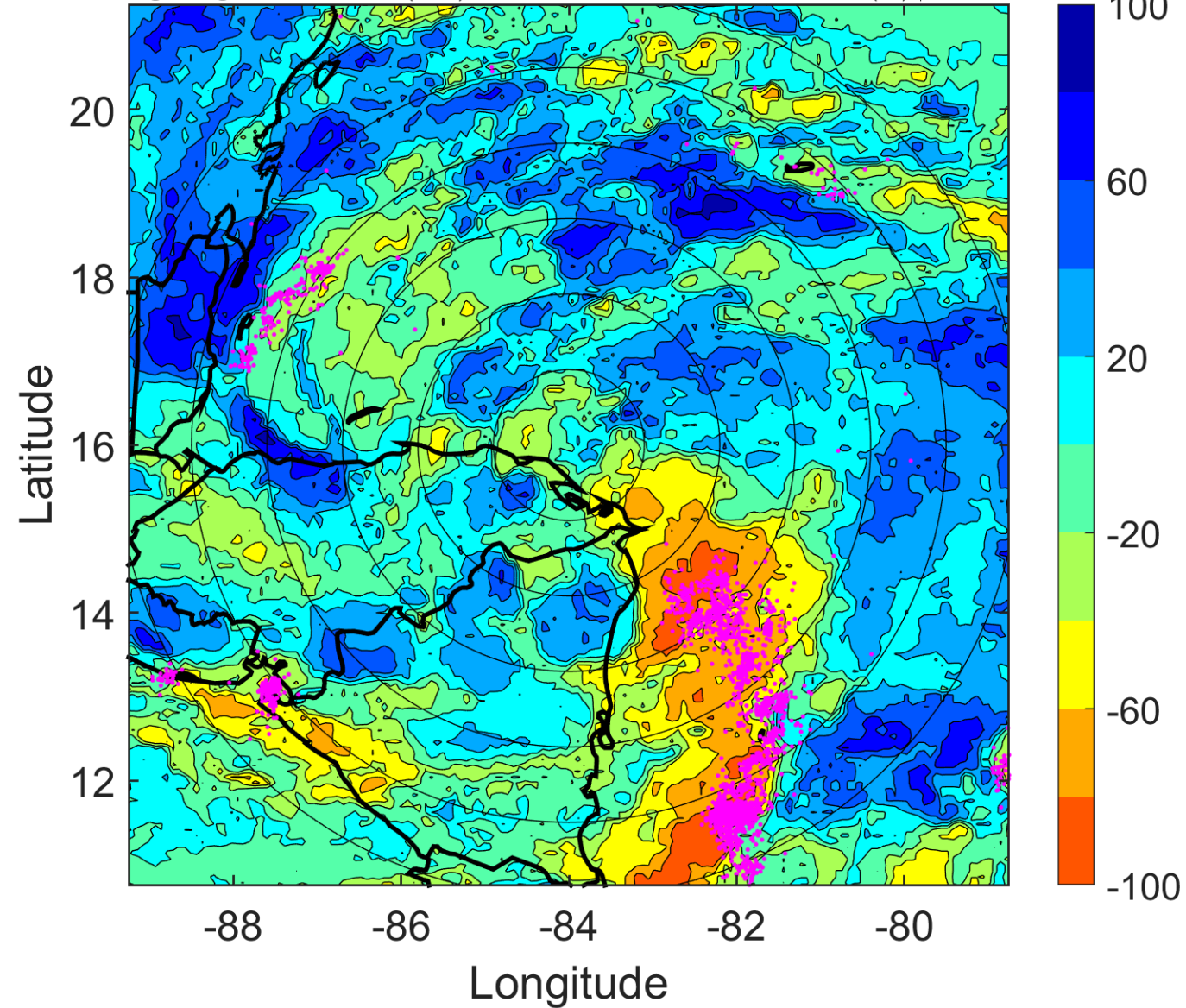
Δ t: 2008101506 (0.4 LT) - 2008101500 (18.4 LT)

Lightning: 0.4 LT \pm 1.5 h (dots)

LAND EFFECTS

16L (SIXTEEN) | 25 kt TD

S: 6.5 m s⁻¹ (M) | H: 113°



IR BT & Lightning

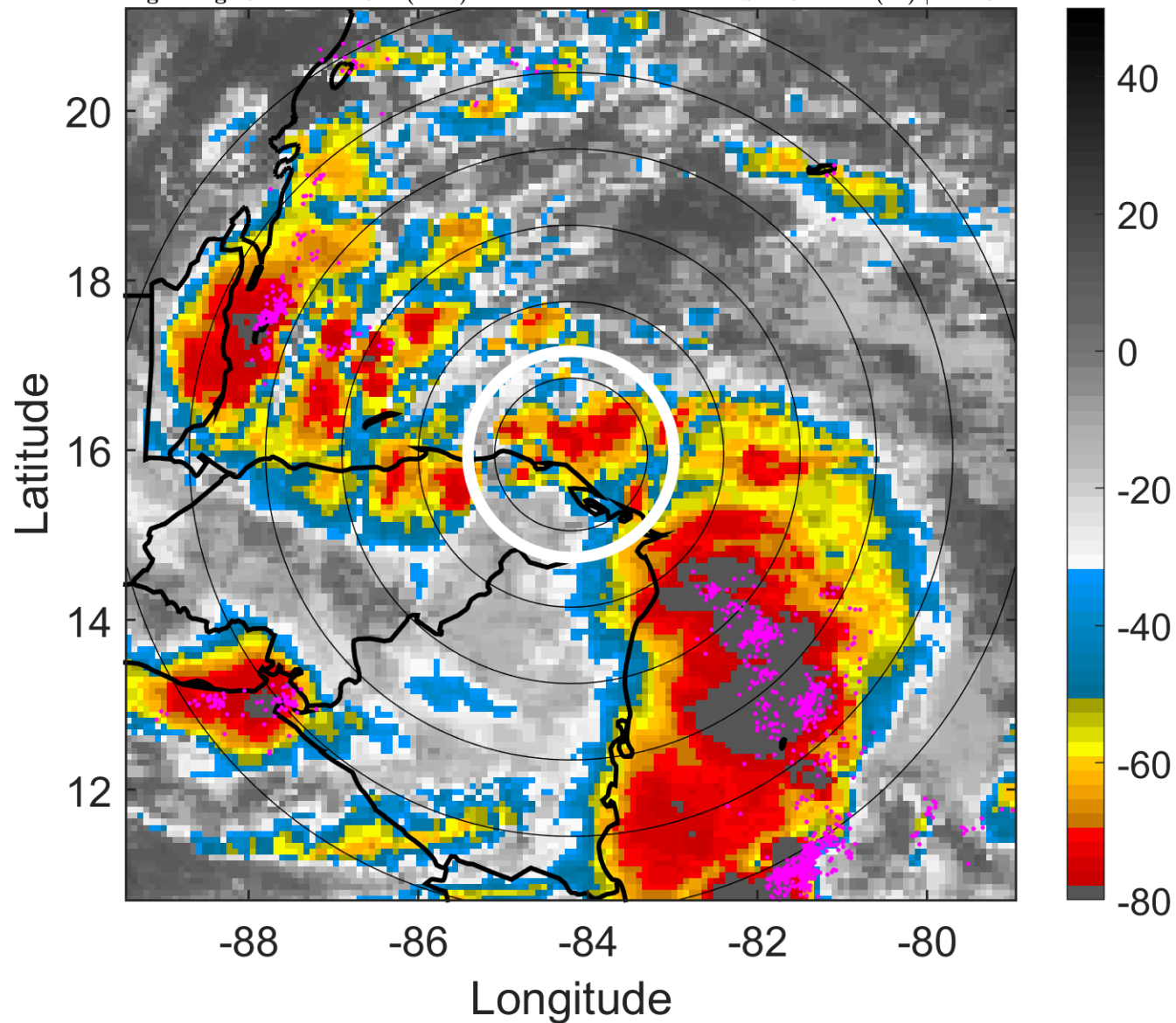
t: 2008101509 (3.4 LT)

Lightning: 3.4 LT \pm 1.5 h (dots)

LAND EFFECTS

16L (SIXTEEN) | 25 kt TD

S: 4.5 m s⁻¹ (M) | H: 134°



6-h IR BT Differences & Lightning

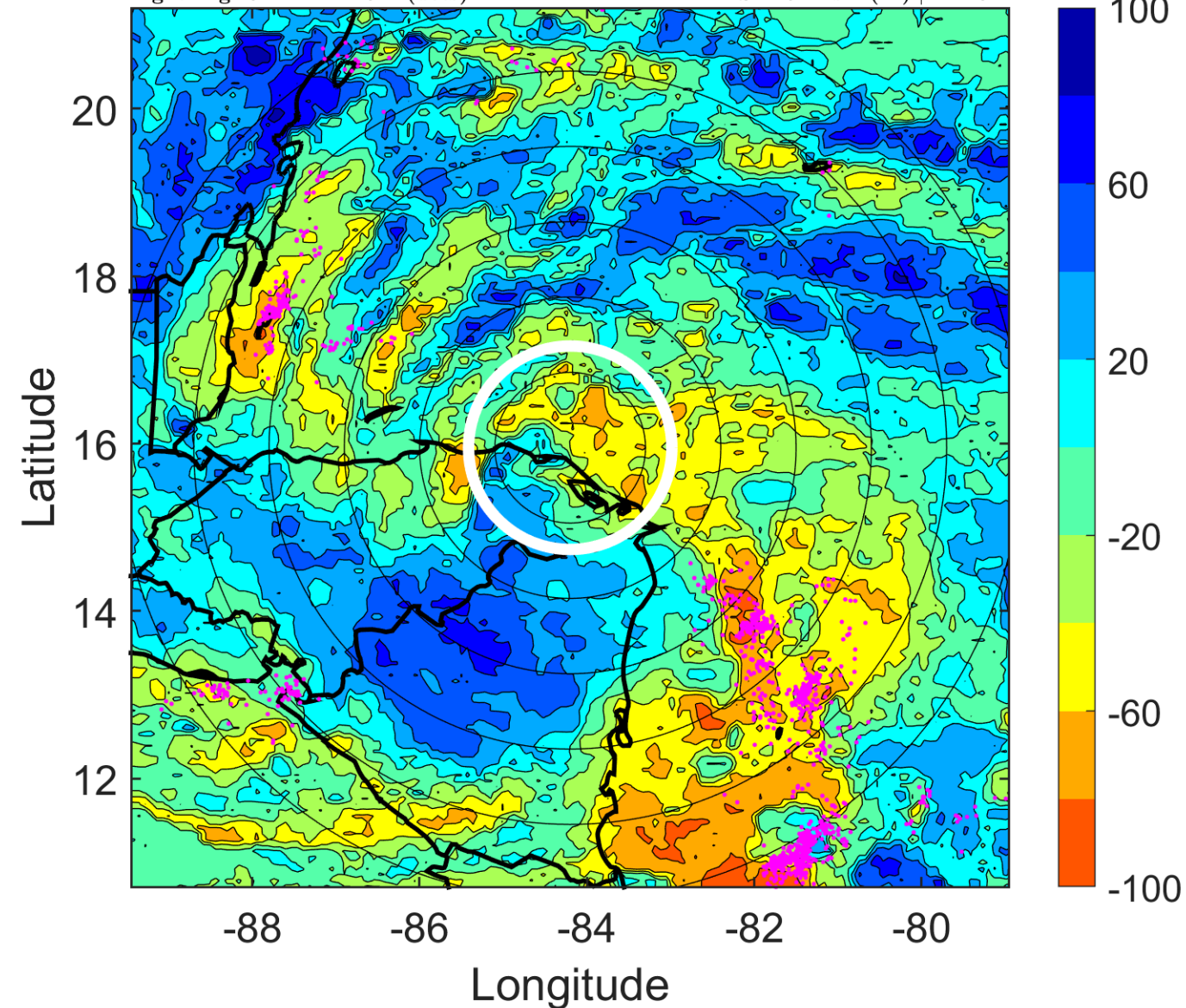
Δ t: 2008101509 (3.4 LT) - 2008101503 (21.4 LT)

Lightning: 3.4 LT \pm 1.5 h (dots)

LAND EFFECTS

16L (SIXTEEN) | 25 kt TD

S: 4.5 m s⁻¹ (M) | H: 134°



IR BT & Lightning

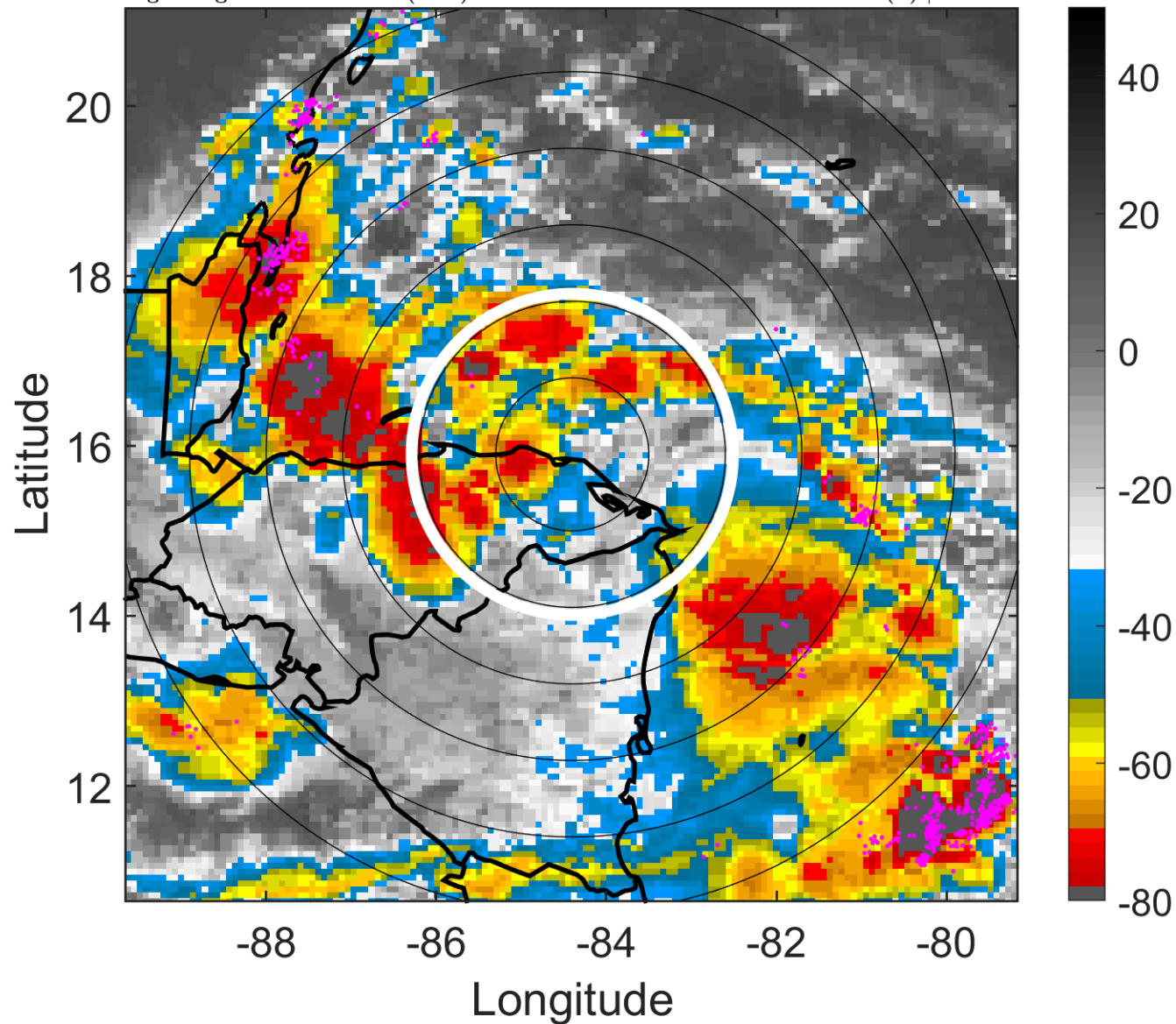
t: 2008101512 (6.4 LT)

Lightning: 6.4 LT \pm 1.5 h (dots)

LAND EFFECTS

16L (SIXTEEN) | 25 kt TD

S: 2.5 m s⁻¹ (L) | H: 155°



6-h IR BT Differences & Lightning

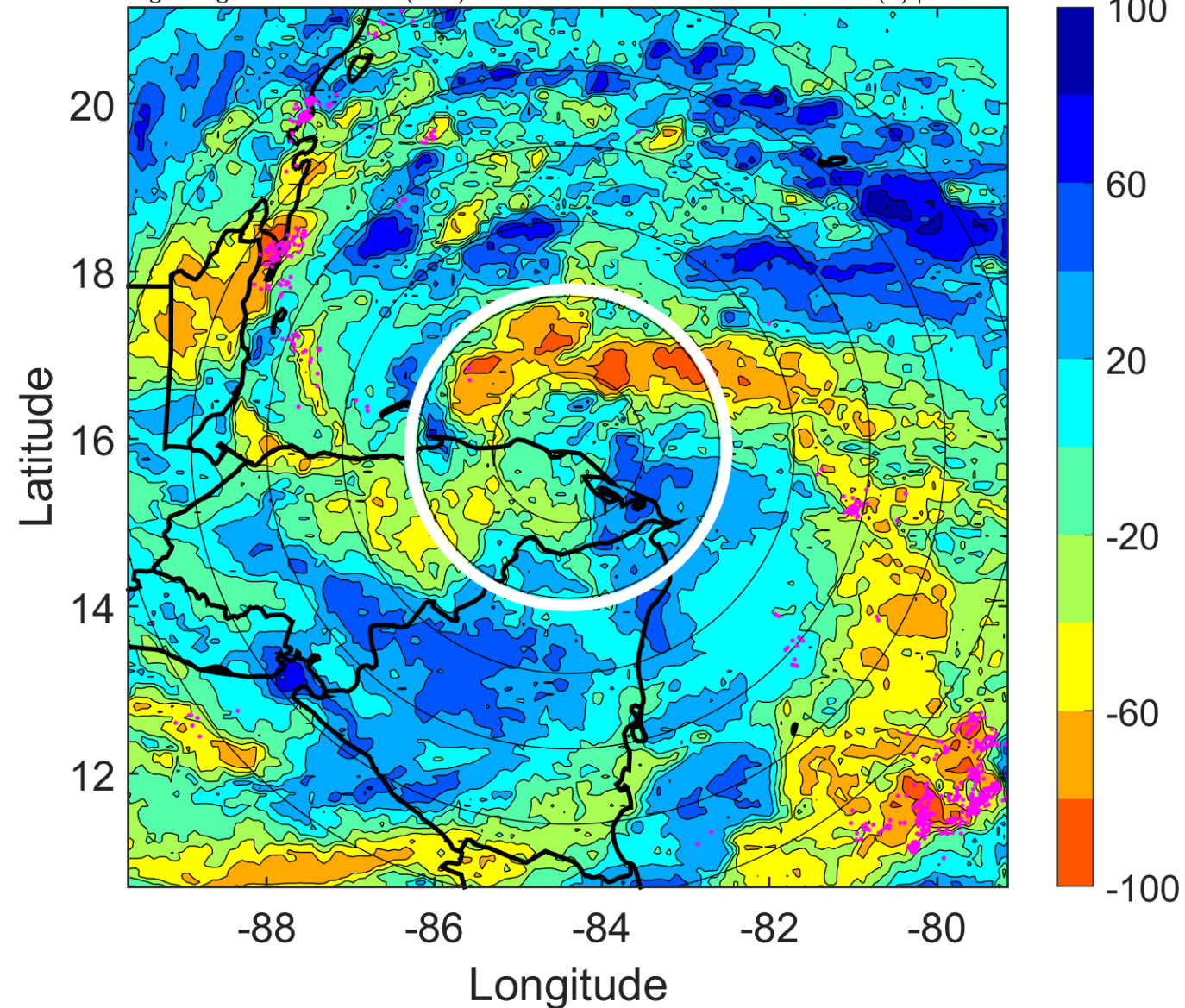
Δ t: 2008101512 (6.4 LT) - 2008101506 (0.4 LT)

Lightning: 6.4 LT \pm 1.5 h (dots)

LAND EFFECTS

16L (SIXTEEN) | 25 kt TD

S: 2.5 m s⁻¹ (L) | H: 155°



IR BT & Lightning

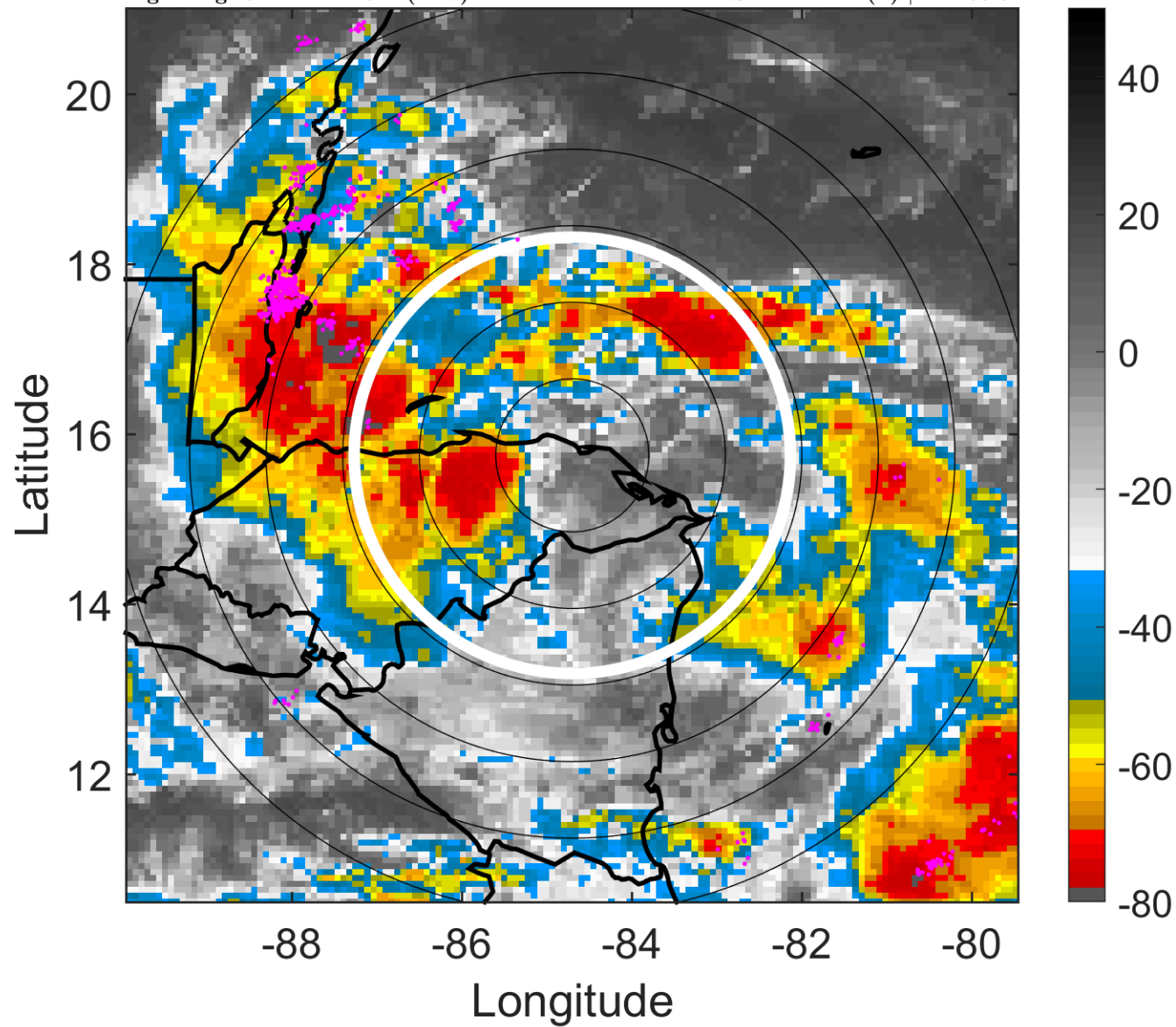
t: 2008101515 (9.4 LT)

Lightning: 9.4 LT \pm 1.5 h (dots)

LAND EFFECTS

16L (SIXTEEN) | 25 kt TD

S: 2.1 m s⁻¹ (L) | H: 186.5°



6-h IR BT Differences & Lightning

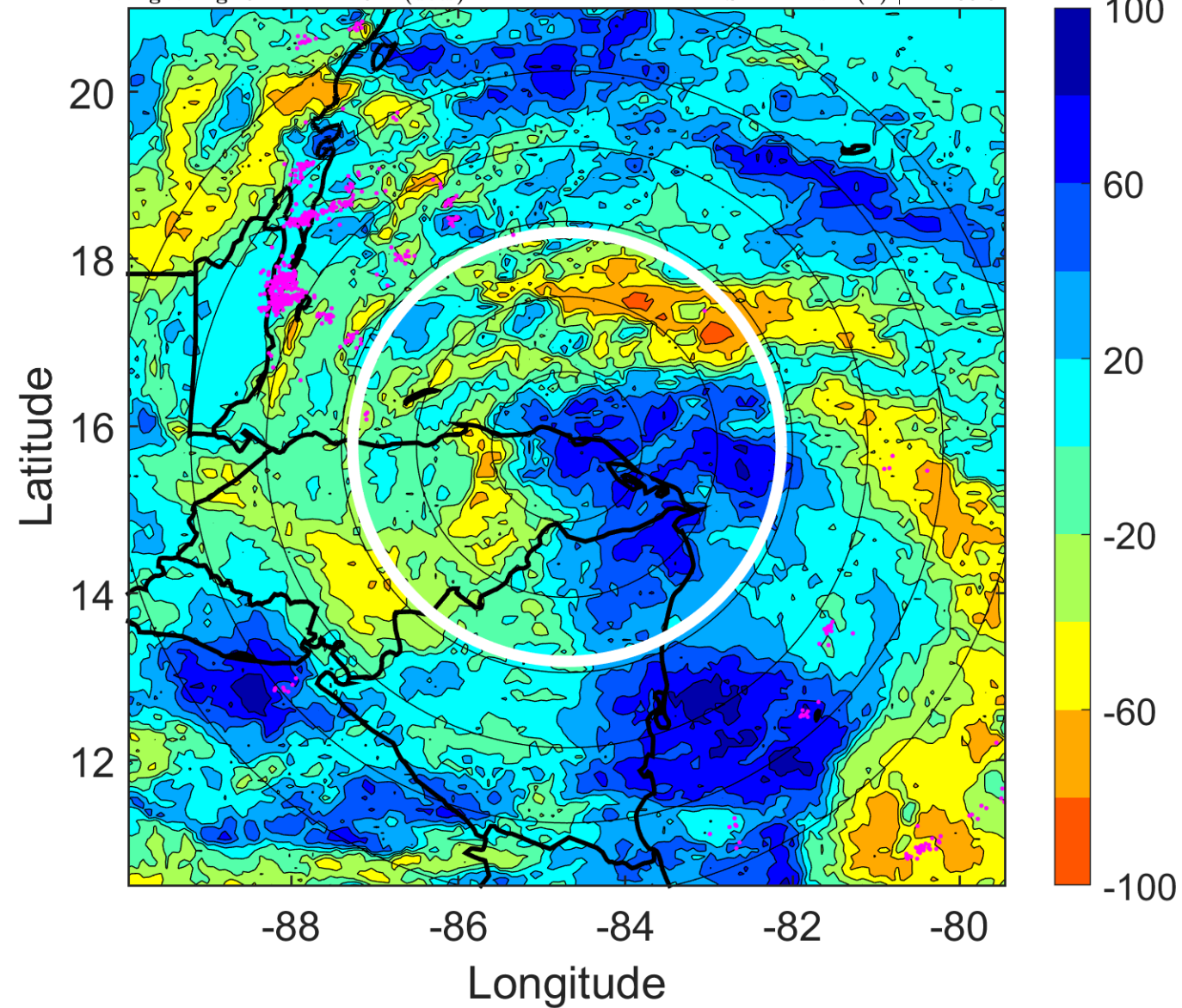
Δ t: 2008101515 (9.4 LT) - 2008101509 (3.4 LT)

Lightning: 9.4 LT \pm 1.5 h (dots)

LAND EFFECTS

16L (SIXTEEN) | 25 kt TD

S: 2.1 m s⁻¹ (L) | H: 186.5°



IR BT & Lightning

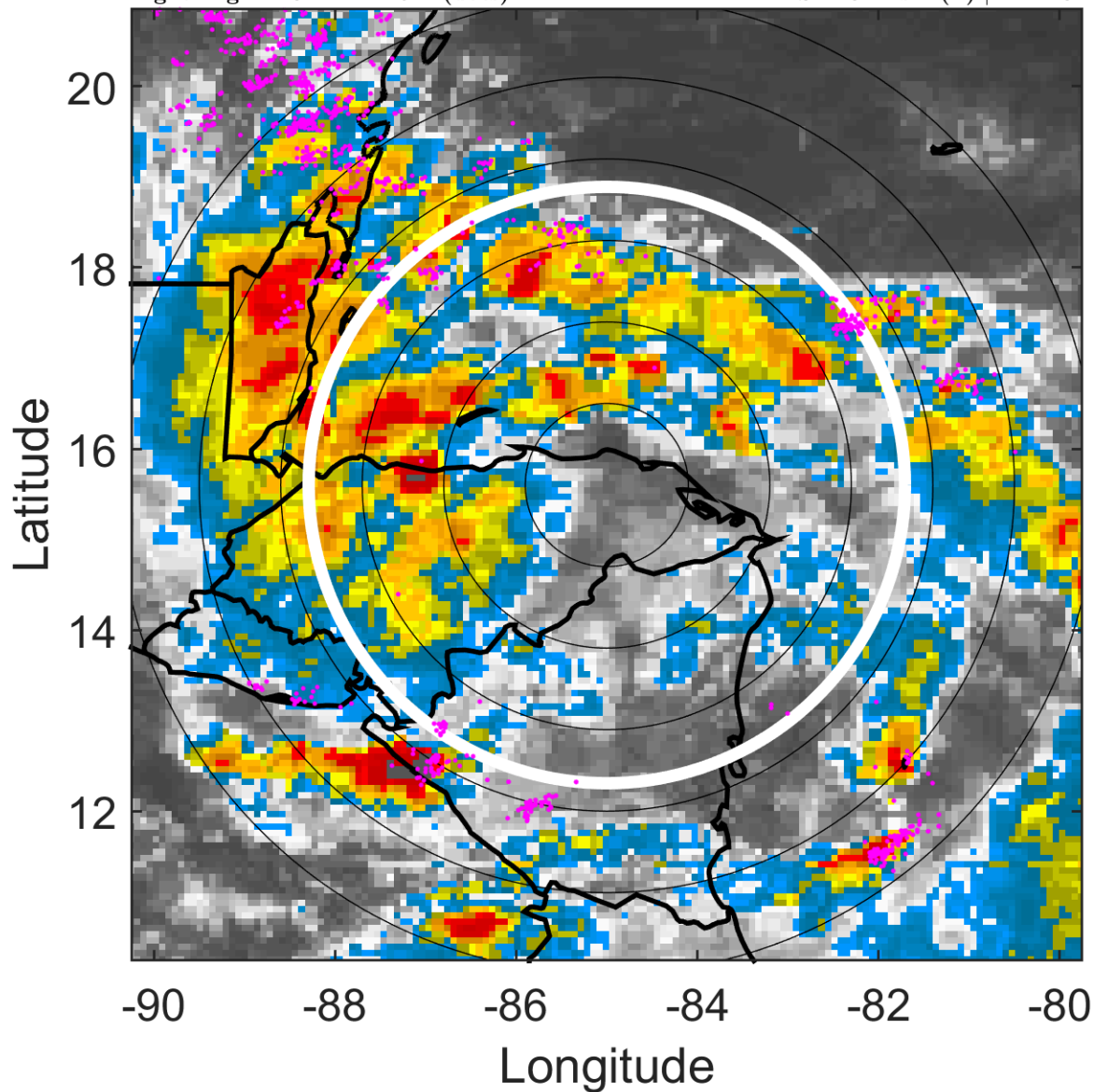
t: 2008101518 (12.3 LT)

Lightning: 12.3 LT \pm 1.5 h (dots)

LAND EFFECTS

16L (SIXTEEN) | 25 kt TD

S: 1.8 m s⁻¹ (L) | H: 218°



6-h IR BT Differences & Lightning

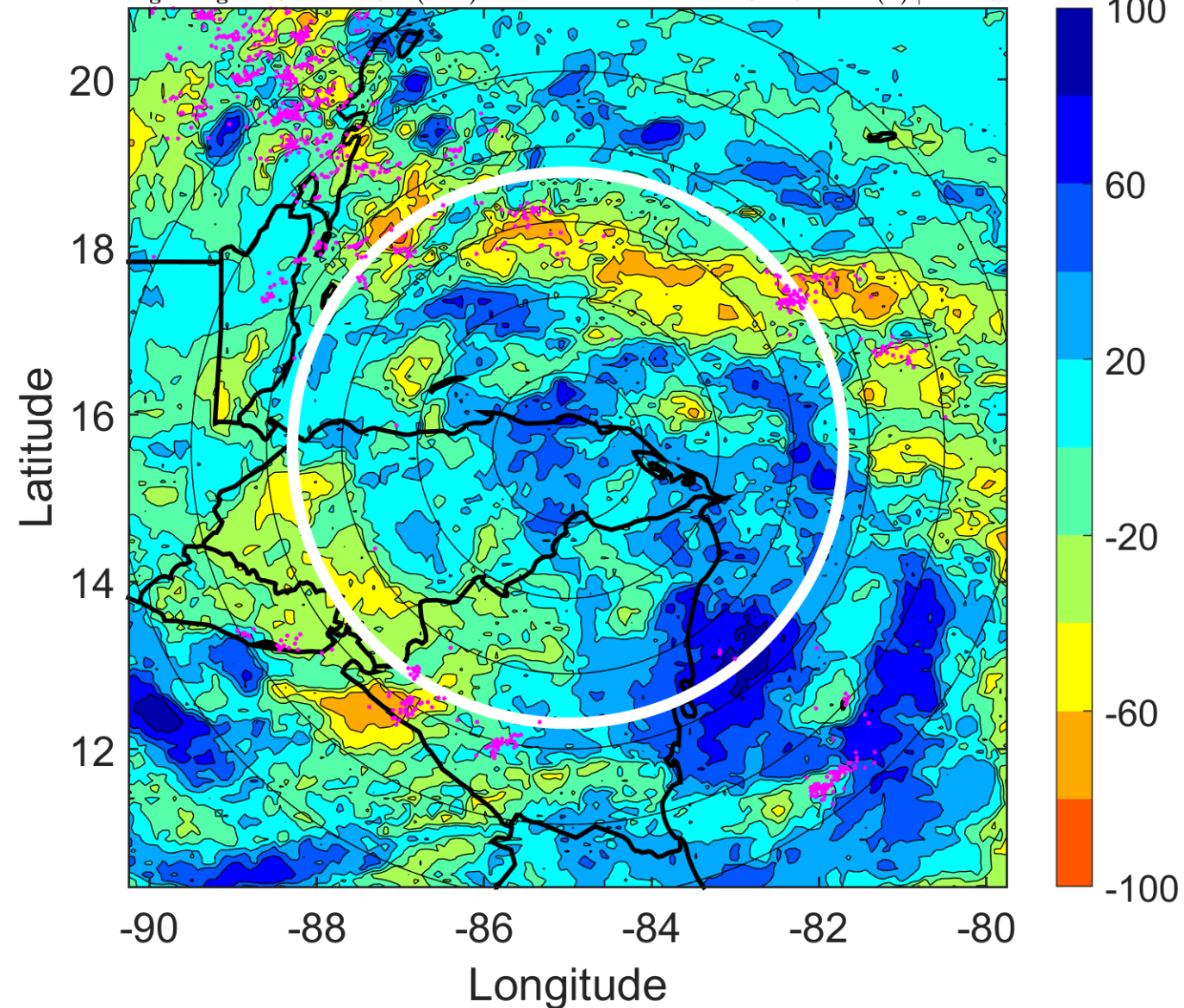
Δ t: 2008101518 (12.3 LT) - 2008101512 (6.4 LT)

Lightning: 12.3 LT \pm 1.5 h (dots)

LAND EFFECTS

16L (SIXTEEN) | 25 kt TD

S: 1.8 m s⁻¹ (L) | H: 218°



IR BT & Lightning

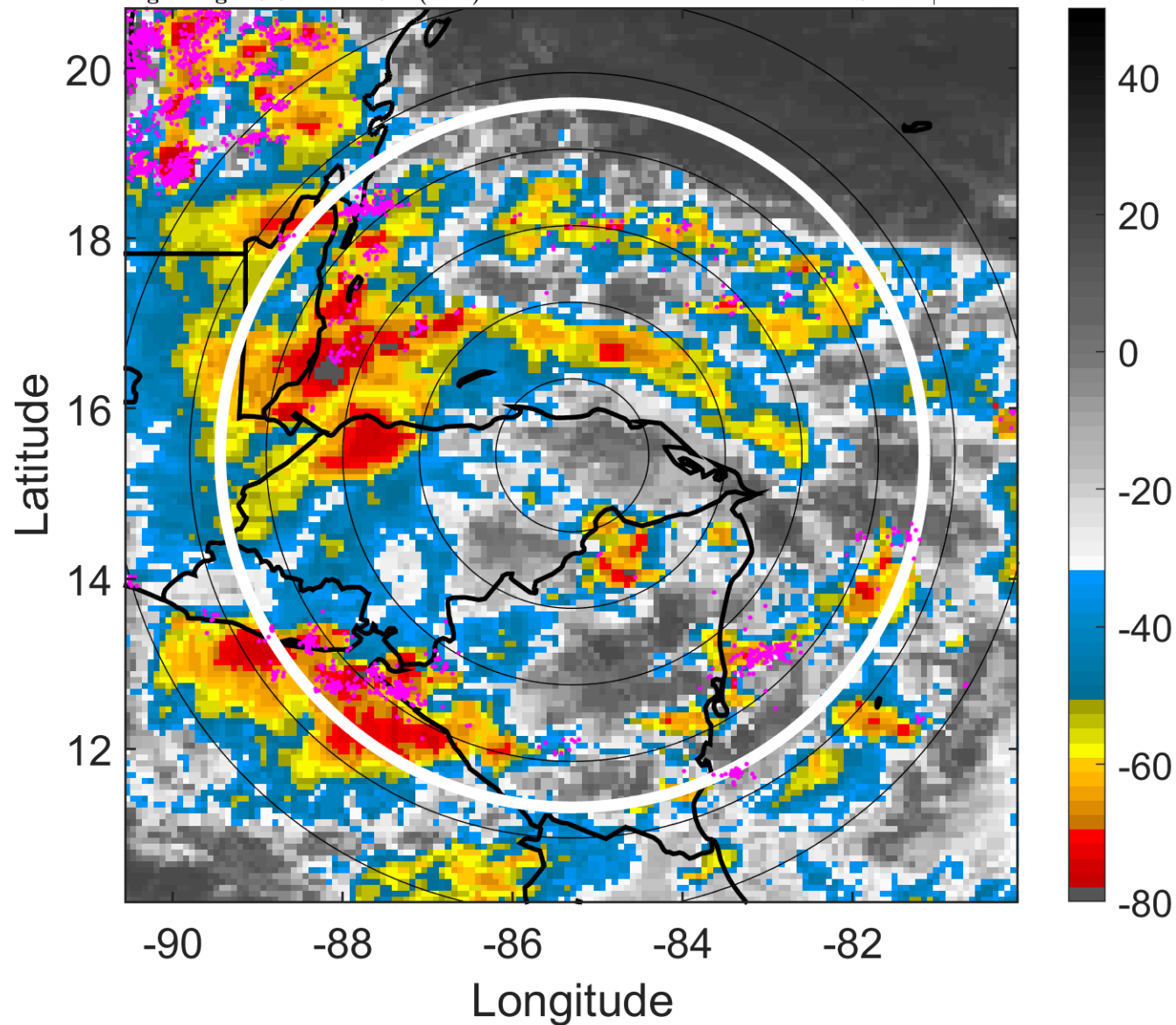
t: 2008101521 (15.3 LT)

Lightning: 15.3 LT \pm 1.5 h (dots)

LAND EFFECTS

16L (SIXTEEN) | 25 kt TD

S: null | H: null



6-h IR BT Differences & Lightning

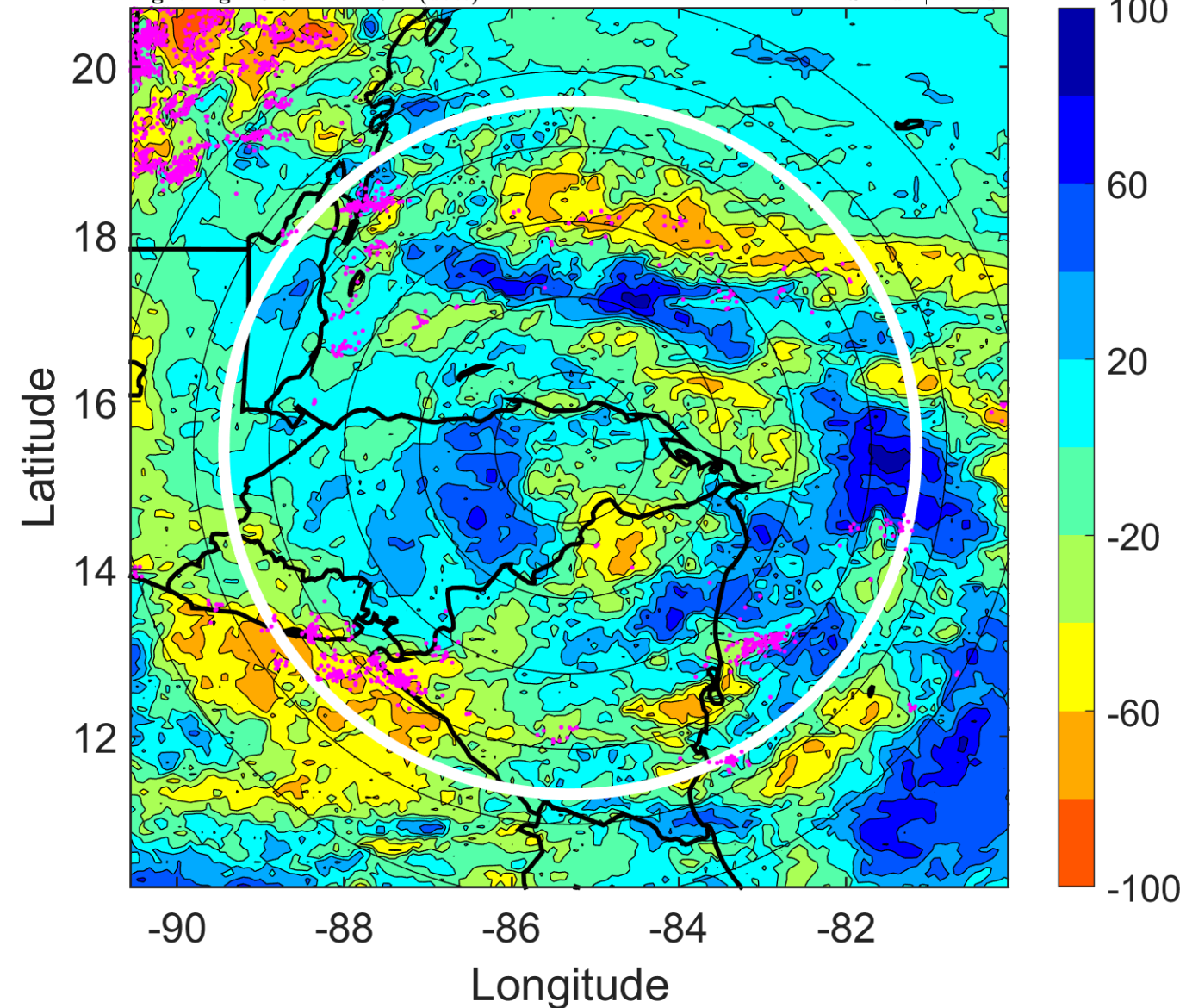
Δ t: 2008101521 (15.3 LT) - 2008101515 (9.4 LT)

Lightning: 15.3 LT \pm 1.5 h (dots)

LAND EFFECTS

16L (SIXTEEN) | 25 kt TD

S: null | H: null



IR BT & Lightning

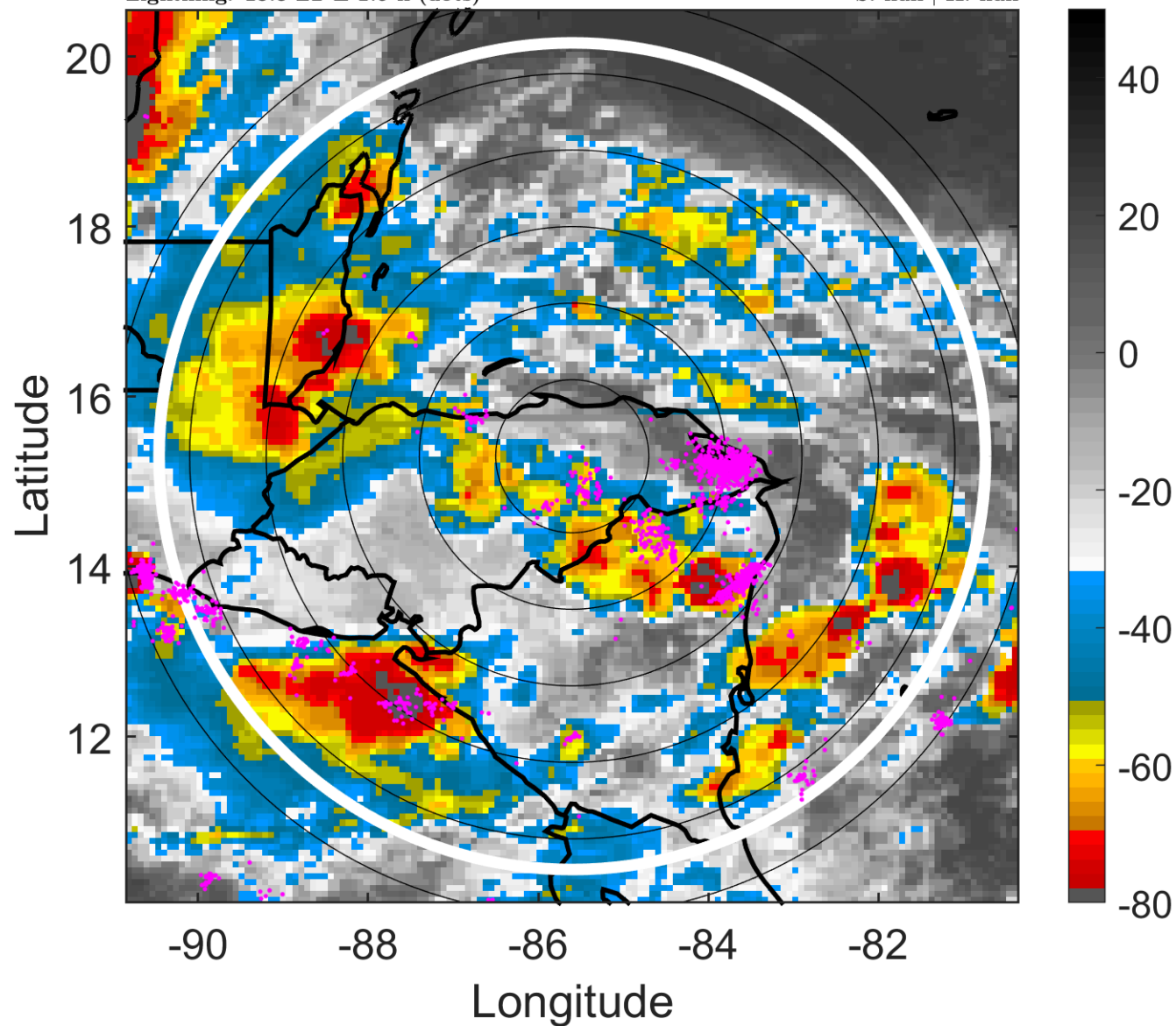
t: 2008101600 (18.3 LT)

Lightning: 18.3 LT \pm 1.5 h (dots)

LAND EFFECTS

16L (SIXTEEN) | 25 kt LO

S: null | H: null



6-h IR BT Differences & Lightning

Δ t: 2008101600 (18.3 LT) - 2008101518 (12.3 LT)

Lightning: 18.3 LT \pm 1.5 h (dots)

LAND EFFECTS

16L (SIXTEEN) | 25 kt LO

S: null | H: null

