

### IR BT & Lightning

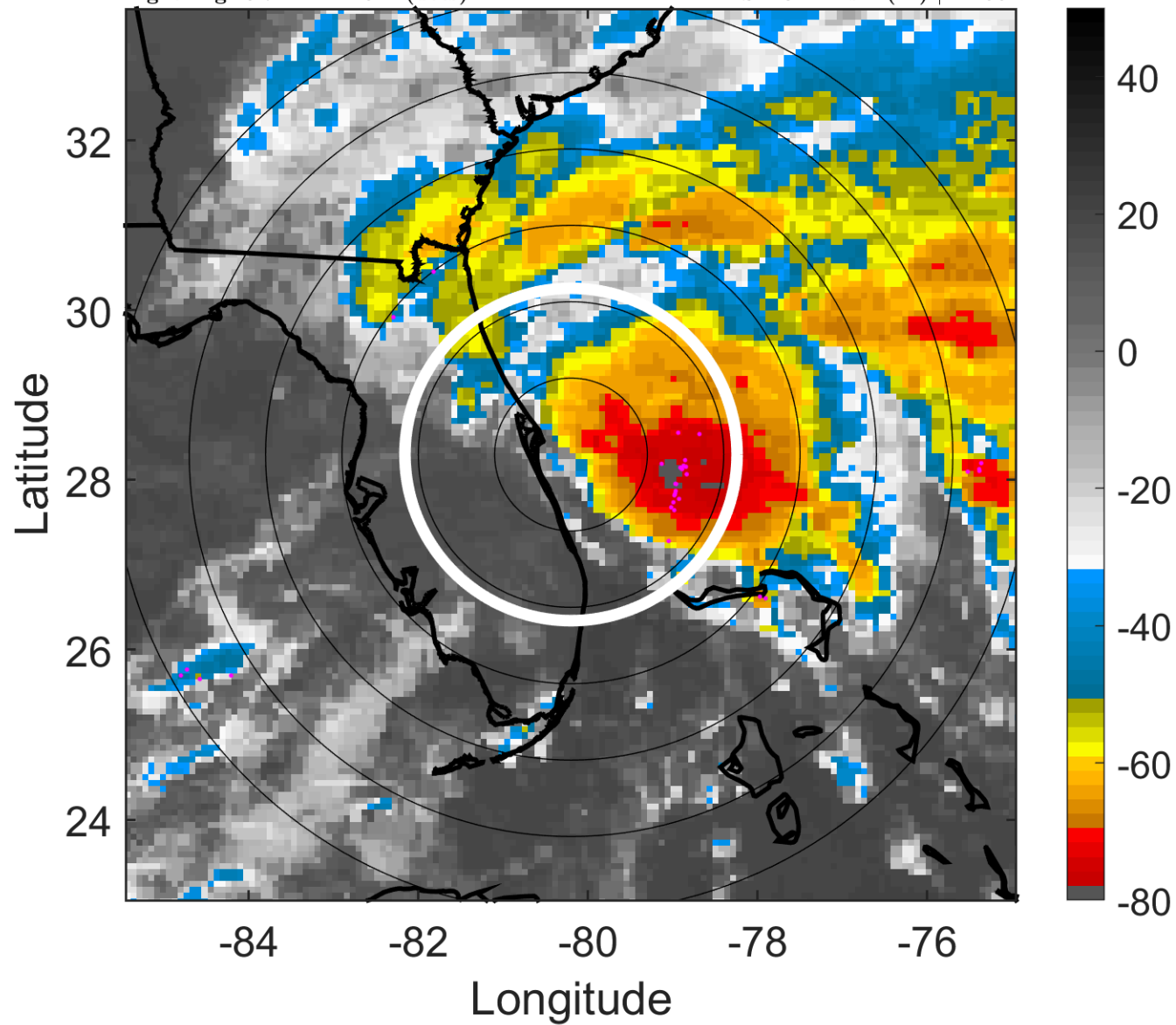
t: 2005100512 (6.7 LT)

Lightning: 6.7 LT  $\pm$  1.5 h (dots)

PT: LLCP | EA: INACT

22L (TAMMY) | 40 kt TS

S: 10.1 m s<sup>-1</sup> (M) | H: 55°



### 6-h IR BT Differences & Lightning

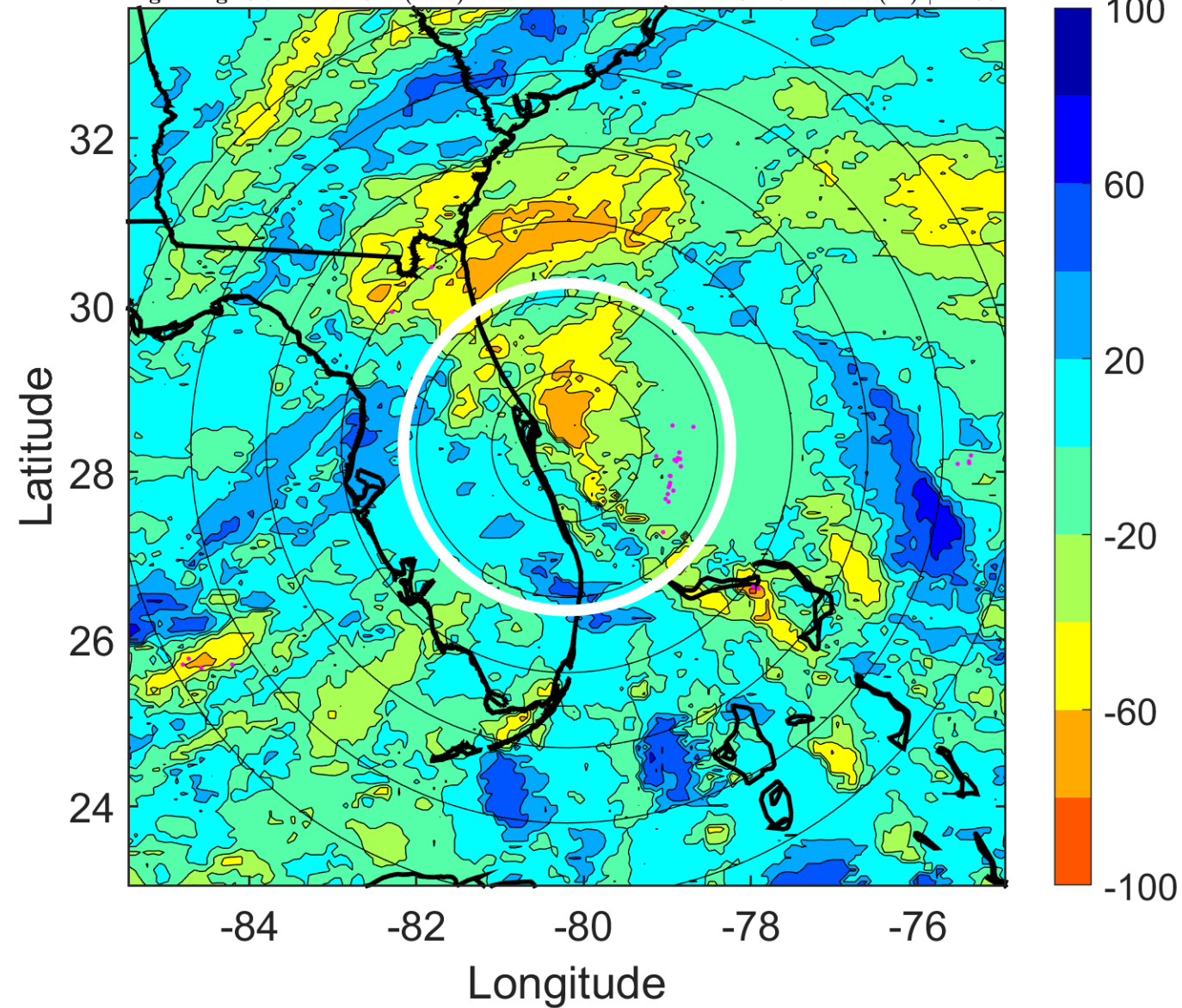
$\Delta$ t: 2005100512 (6.7 LT) - 2005100506 (0.7 LT)

Lightning: 6.7 LT  $\pm$  1.5 h (dots)

PT: LLCP | EA: INACT

22L (TAMMY) | 40 kt TS

S: 10.1 m s<sup>-1</sup> (M) | H: 55°



### IR BT & Lightning

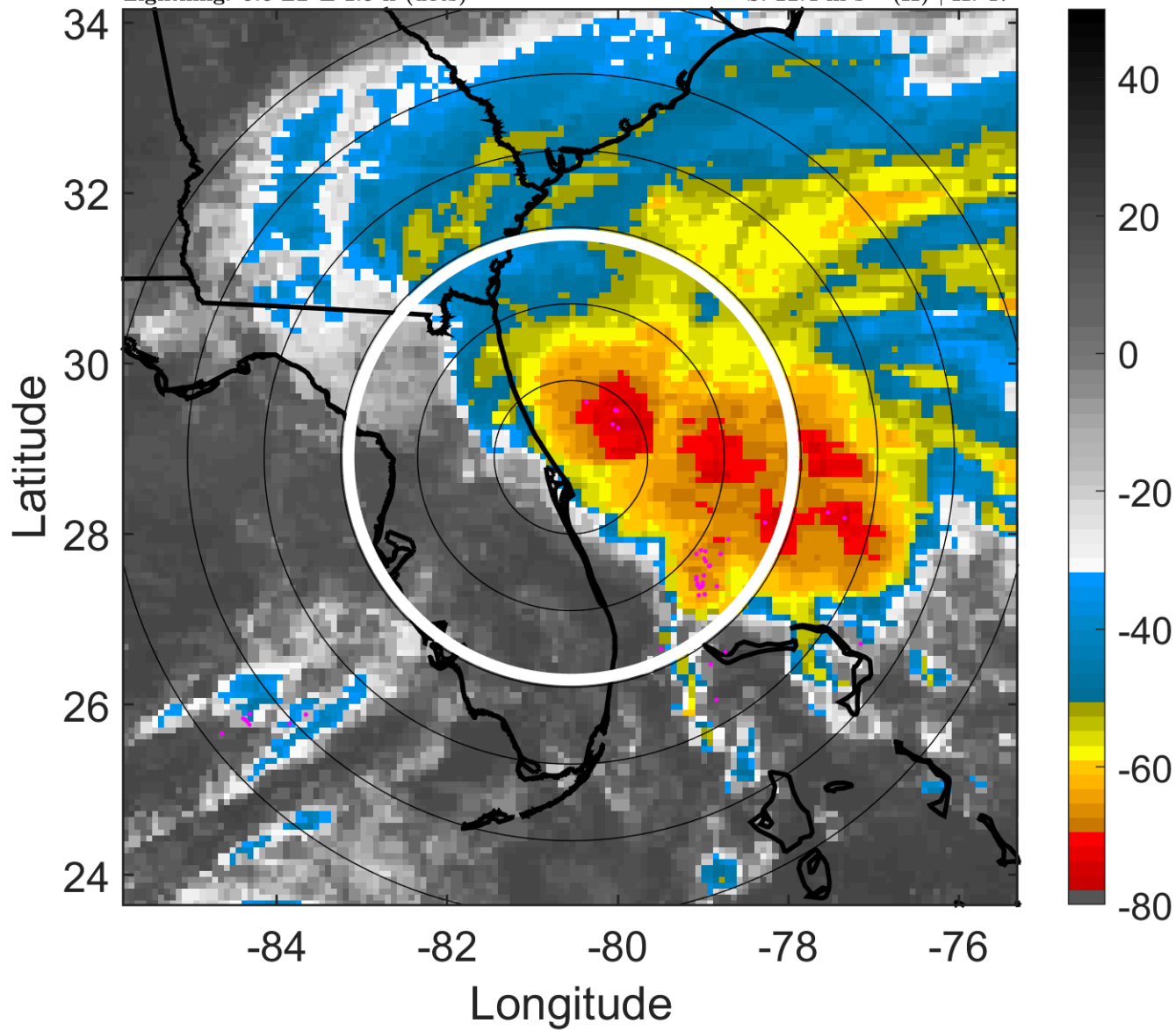
t: 2005100515 (9.6 LT)

Lightning: 9.6 LT  $\pm$  1.5 h (dots)

PT: LLCP | EA: INACT

22L (TAMMY) | 42.5 kt TS

S: 12.4 m s<sup>-1</sup> (H) | H: 47°



### 6-h IR BT Differences & Lightning

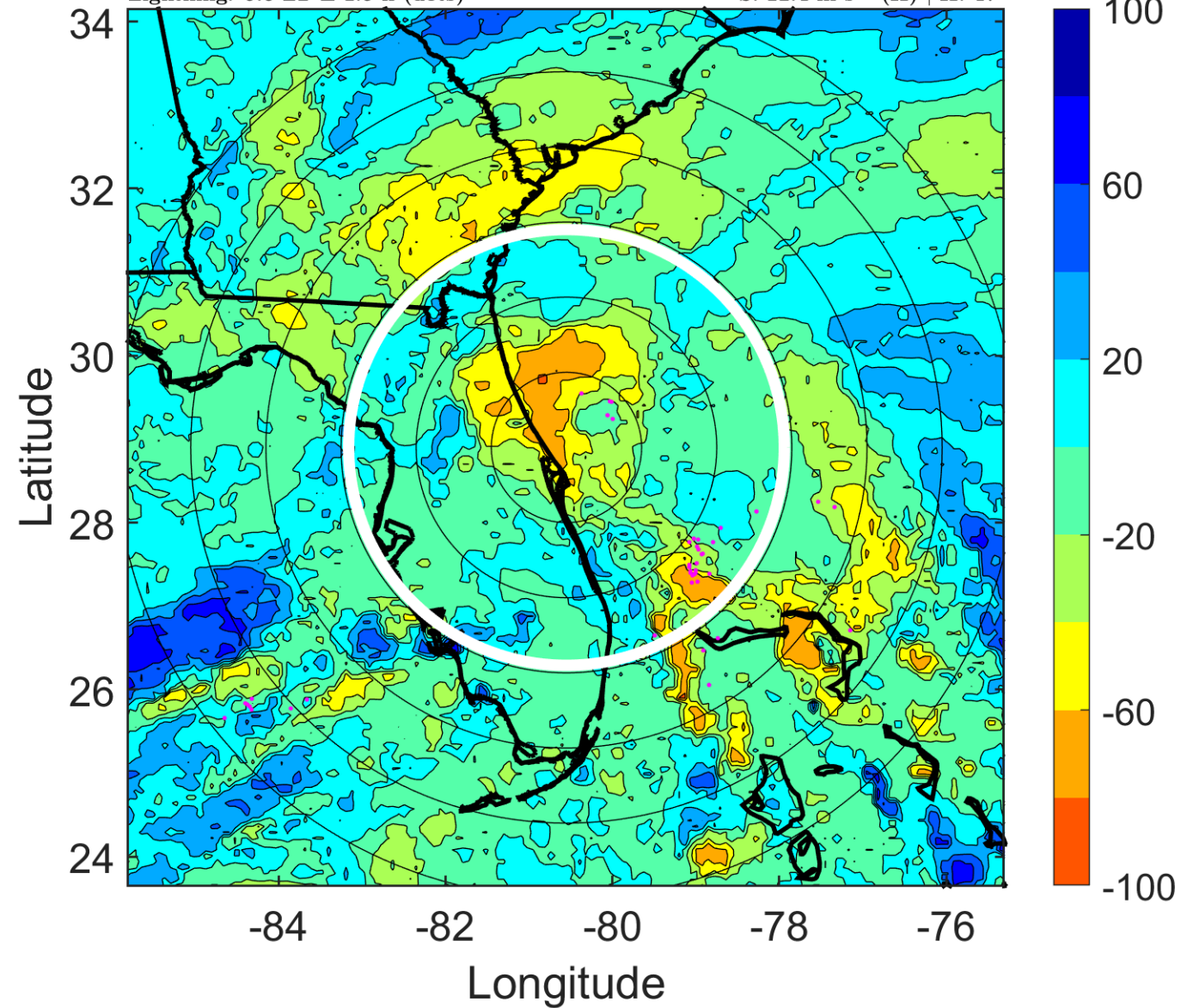
$\Delta$ t: 2005100515 (9.6 LT) - 2005100509 (3.7 LT)

Lightning: 9.6 LT  $\pm$  1.5 h (dots)

PT: LLCP | EA: INACT

22L (TAMMY) | 42.5 kt TS

S: 12.4 m s<sup>-1</sup> (H) | H: 47°



### IR BT & Lightning

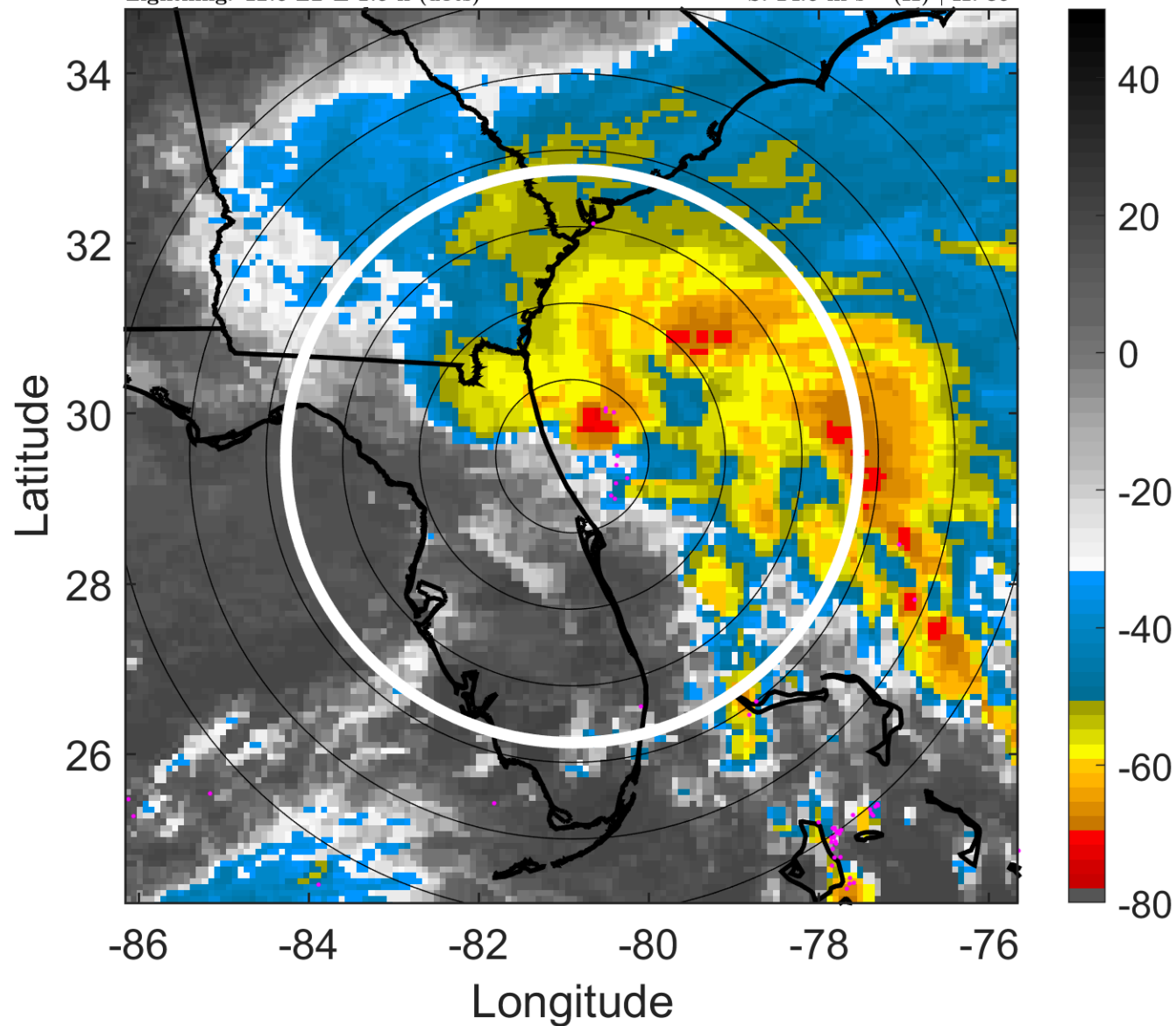
t: 2005100518 (12.6 LT)

Lightning: 12.6 LT  $\pm$  1.5 h (dots)

PT: LLCP | EA: INACT

22L (TAMMY) | 45 kt TS

S: 14.6 m s<sup>-1</sup> (H) | H: 39°



### 6-h IR BT Differences & Lightning

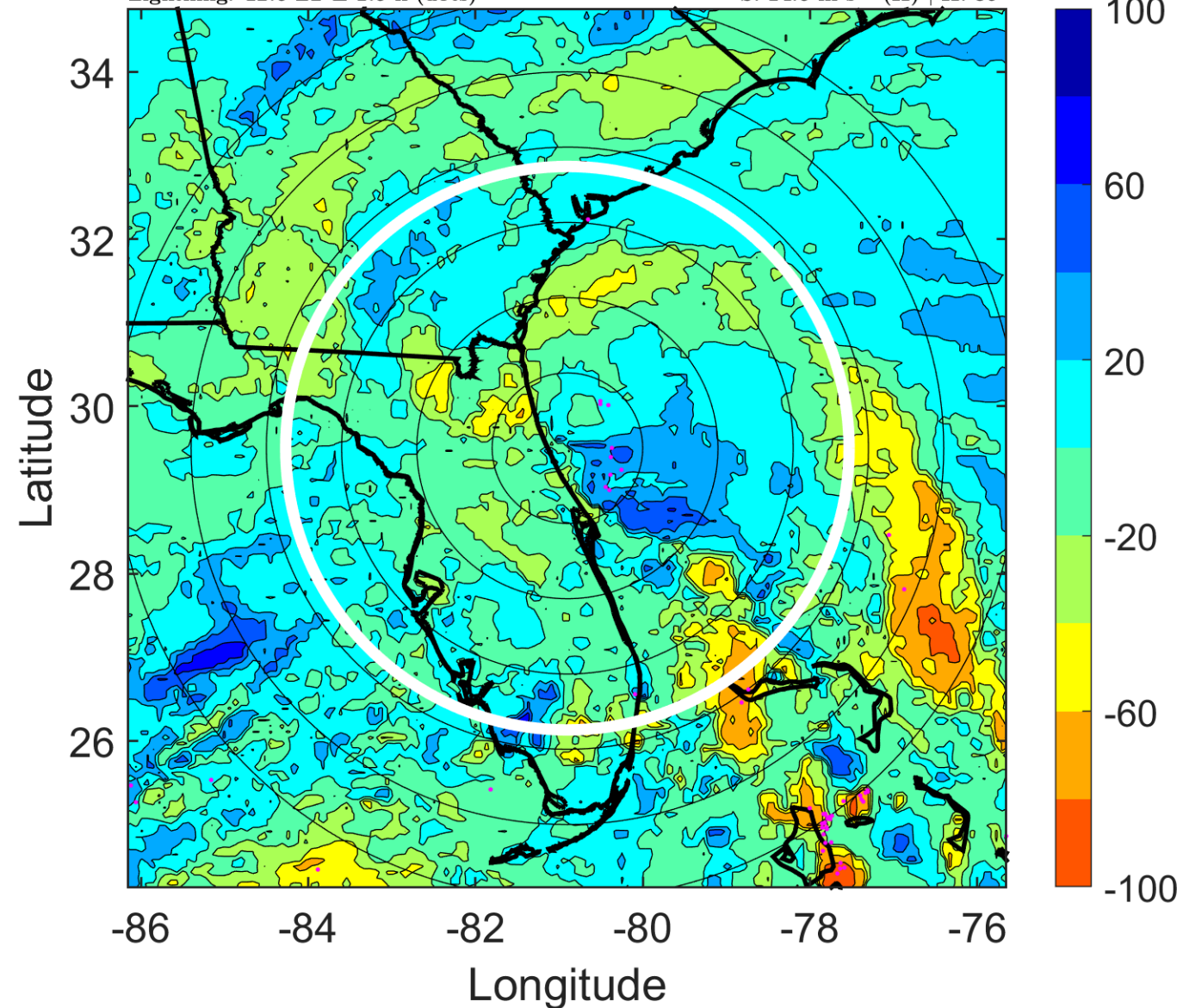
$\Delta$ t: 2005100518 (12.6 LT) - 2005100512 (6.7 LT)

Lightning: 12.6 LT  $\pm$  1.5 h (dots)

PT: LLCP | EA: INACT

22L (TAMMY) | 45 kt TS

S: 14.6 m s<sup>-1</sup> (H) | H: 39°



### IR BT & Lightning

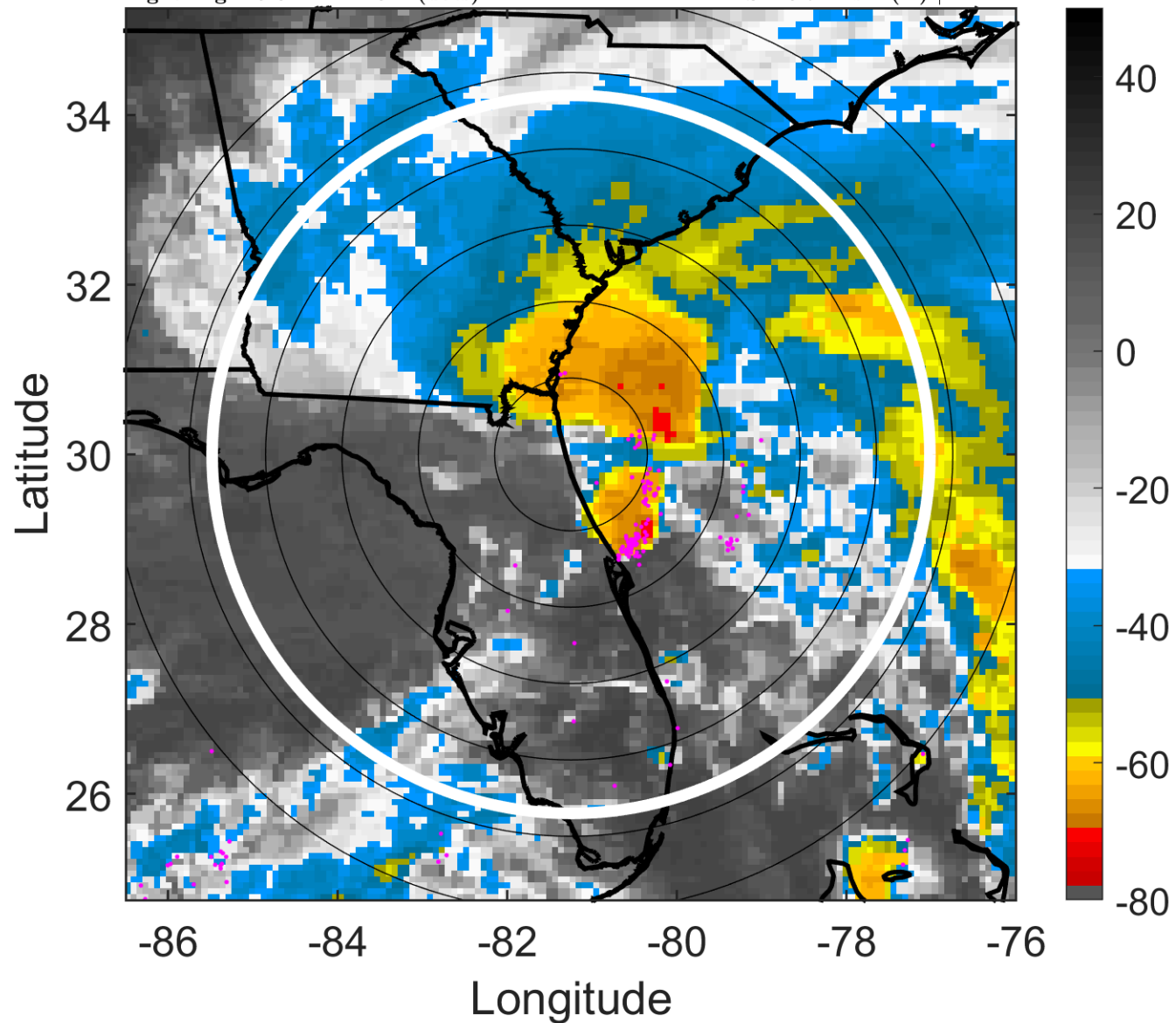
t: 2005100521 (15.6 LT)

Lightning: 15.6 LT  $\pm$  1.5 h (dots)

PT: LLCP | EA: INACT

22L (TAMMY) | 45 kt TS

S: 16.7 m s<sup>-1</sup> (H) | H: 42°



### 6-h IR BT Differences & Lightning

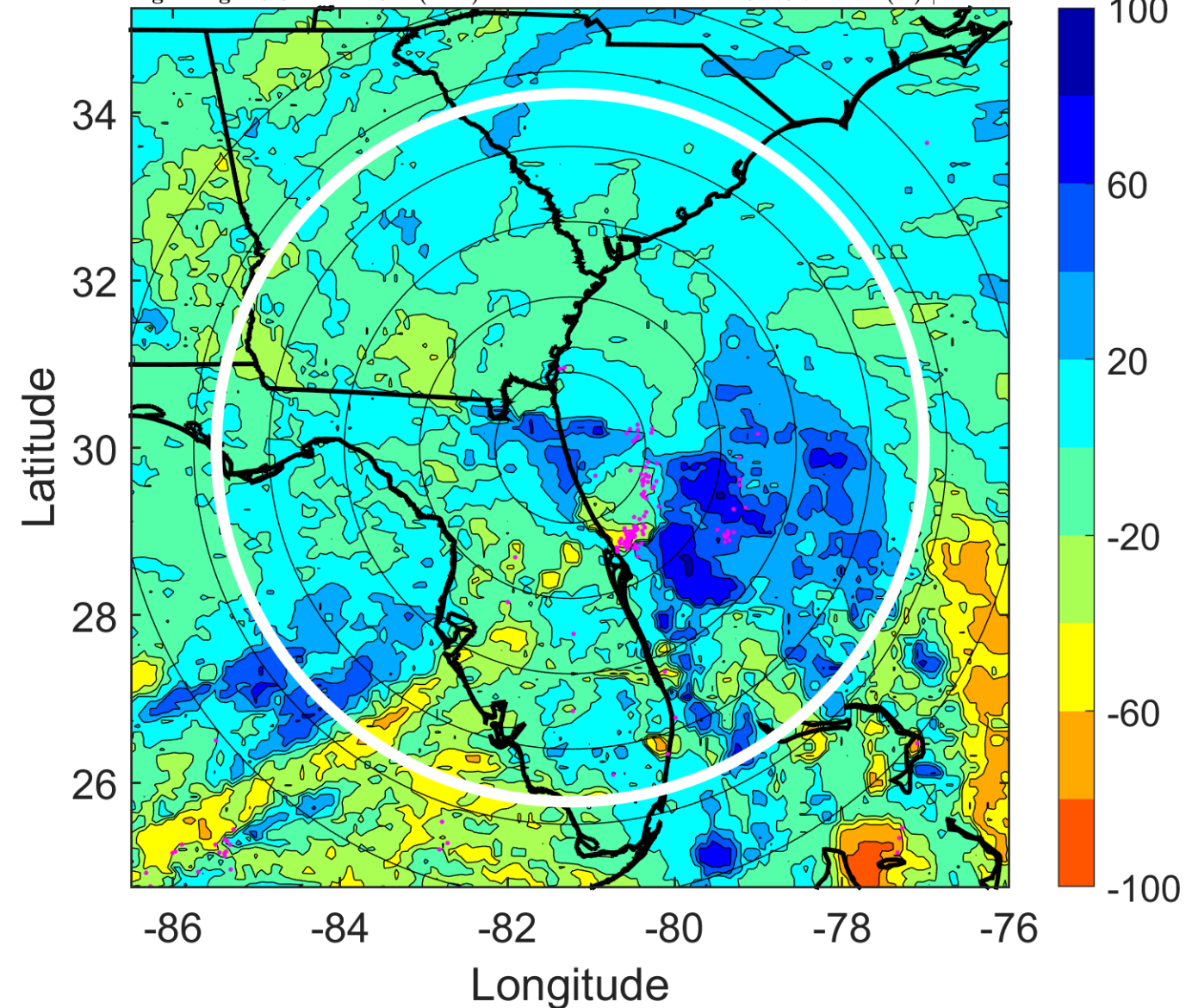
$\Delta$ t: 2005100521 (15.6 LT) - 2005100515 (9.6 LT)

Lightning: 15.6 LT  $\pm$  1.5 h (dots)

PT: LLCP | EA: INACT

22L (TAMMY) | 45 kt TS

S: 16.7 m s<sup>-1</sup> (H) | H: 42°



### IR BT & Lightning

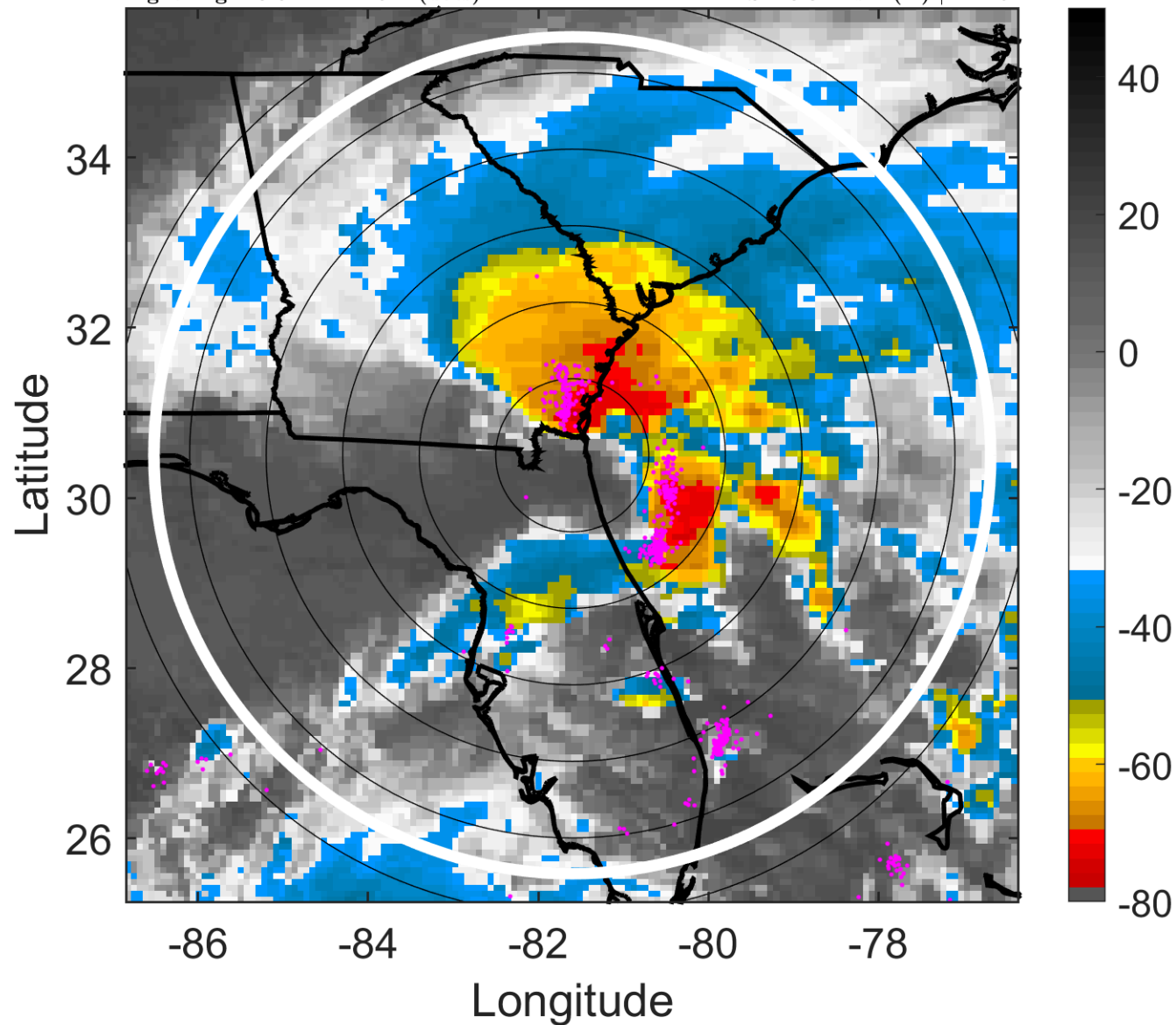
t: 2005100600 (18.6 LT)

Lightning: 18.6 LT  $\pm$  1.5 h (dots)

PT: LLCP | EA: INACT

22L (TAMMY) | 45 kt TS

S: 18.8 m s<sup>-1</sup> (H) | H: 45°



### 6-h IR BT Differences & Lightning

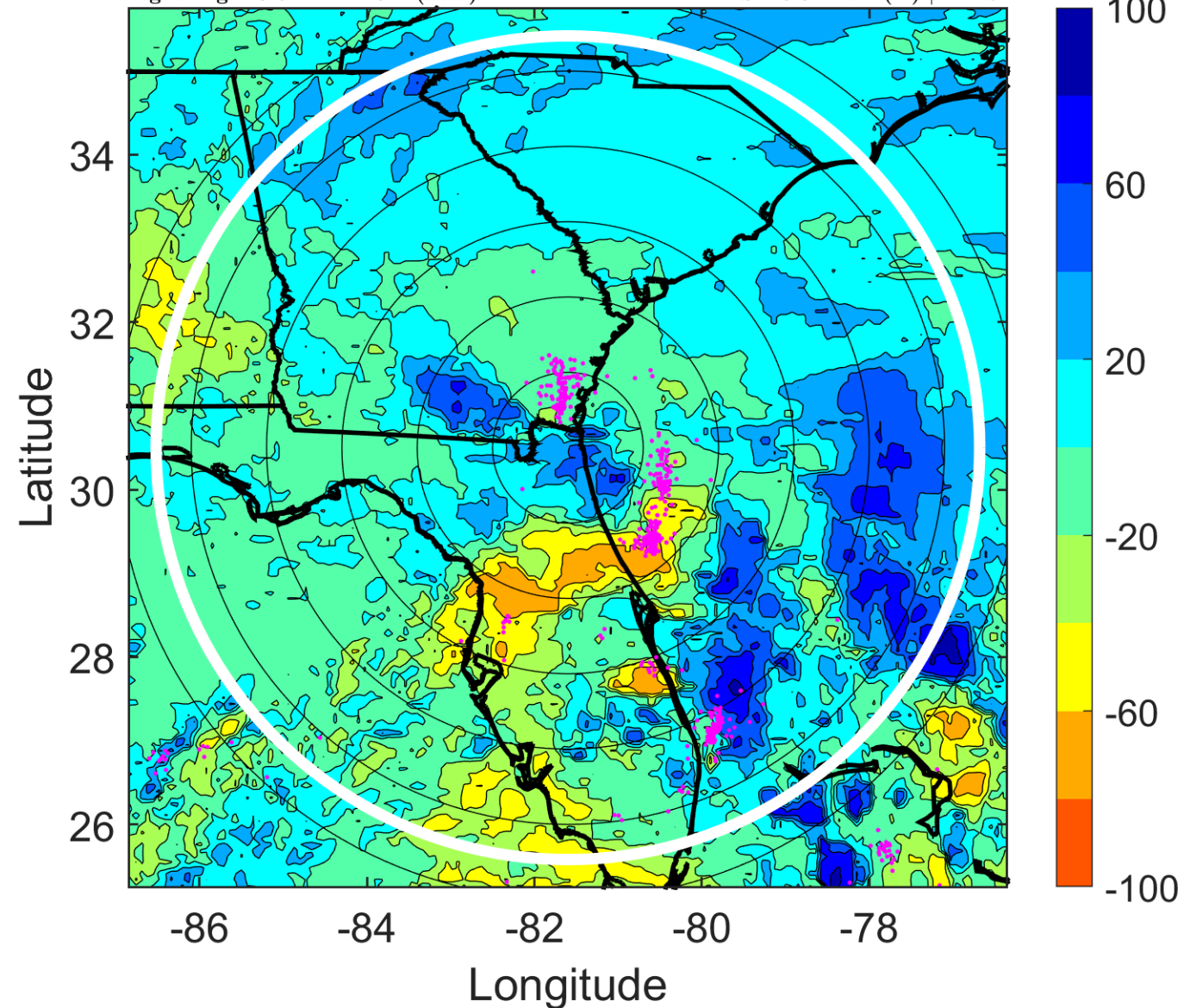
$\Delta$ t: 2005100600 (18.6 LT) - 2005100518 (12.6 LT)

Lightning: 18.6 LT  $\pm$  1.5 h (dots)

PT: LLCP | EA: INACT

22L (TAMMY) | 45 kt TS

S: 18.8 m s<sup>-1</sup> (H) | H: 45°



### IR BT & Lightning

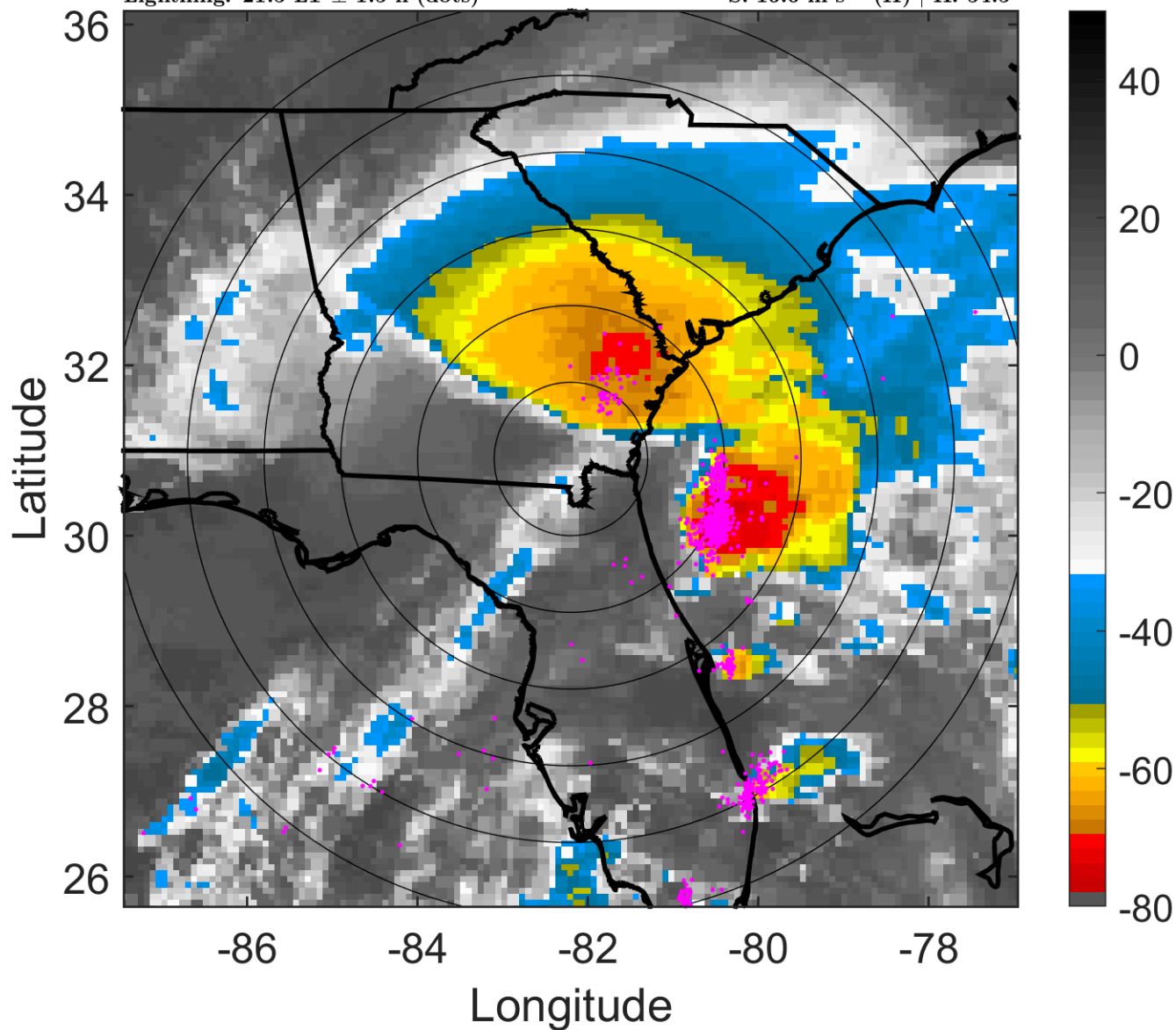
t: 2005100603 (21.5 LT)

Lightning: 21.5 LT  $\pm$  1.5 h (dots)

PT: LLCP | EA: INACT

22L (TAMMY) | 40 kt TS

S: 16.6 m s<sup>-1</sup> (H) | H: 54.5°



### 6-h IR BT Differences & Lightning

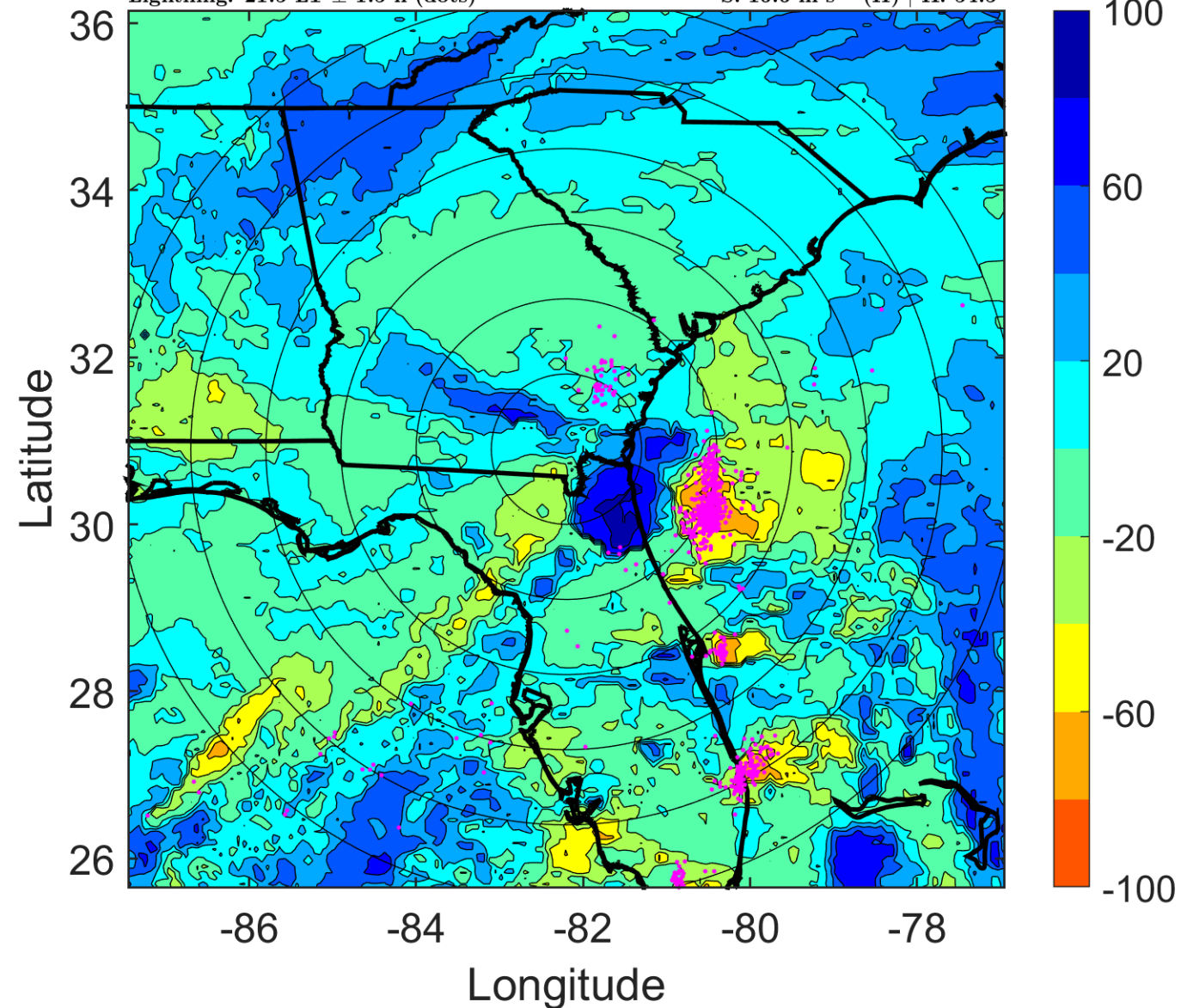
$\Delta$ t: 2005100603 (21.5 LT) - 2005100521 (15.6 LT)

Lightning: 21.5 LT  $\pm$  1.5 h (dots)

PT: LLCP | EA: INACT

22L (TAMMY) | 40 kt TS

S: 16.6 m s<sup>-1</sup> (H) | H: 54.5°



### IR BT & Lightning

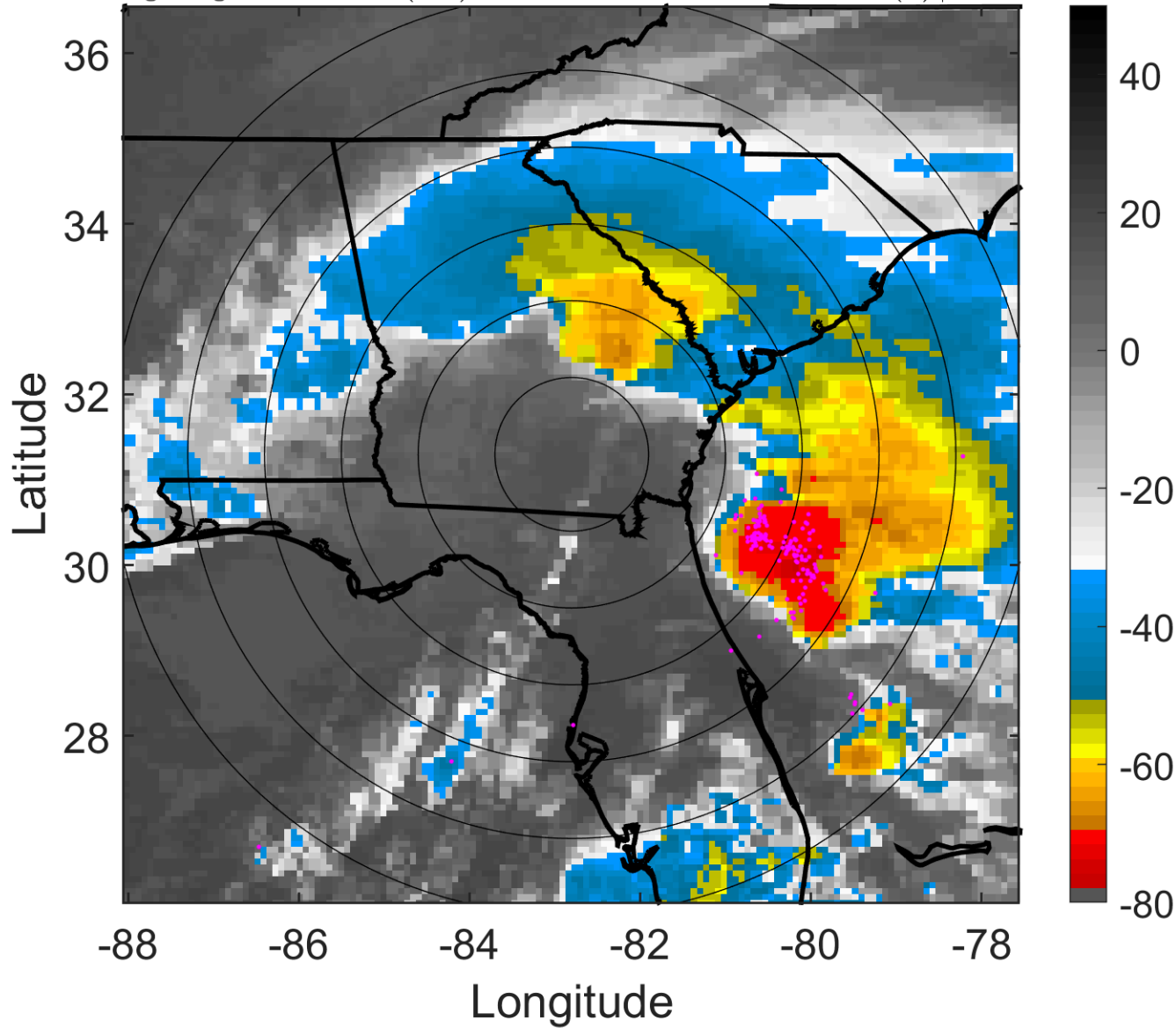
t: 2005100606 (0.5 LT)

Lightning: 0.5 LT  $\pm$  1.5 h (dots)

### LAND EFFECTS

22L (TAMMY) | 35 kt TS

S: 14.5 m s<sup>-1</sup> (H) | H: 64°



### 6-h IR BT Differences & Lightning

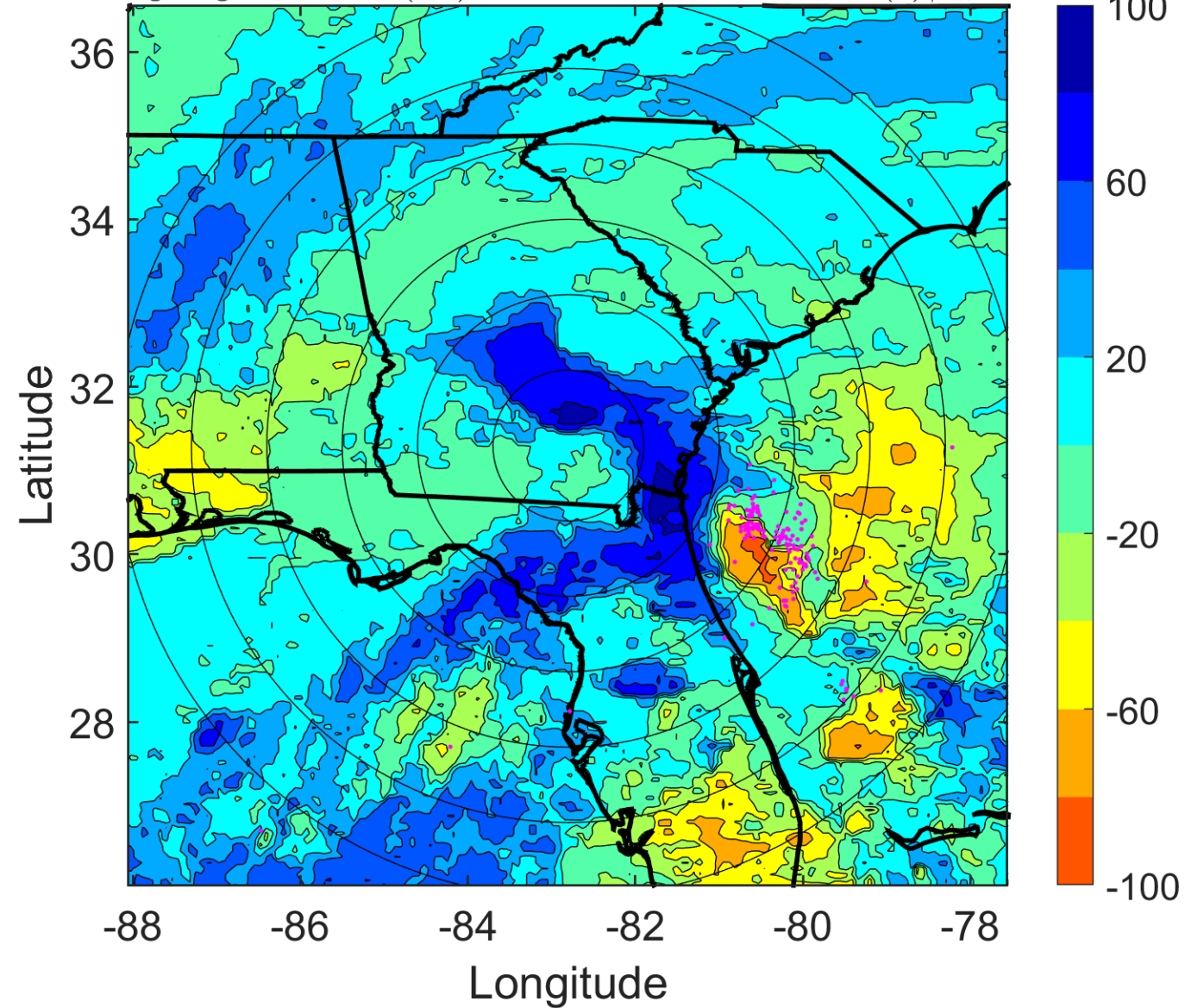
$\Delta$ t: 2005100606 (0.5 LT) - 2005100600 (18.6 LT)

Lightning: 0.5 LT  $\pm$  1.5 h (dots)

### LAND EFFECTS

22L (TAMMY) | 35 kt TS

S: 14.5 m s<sup>-1</sup> (H) | H: 64°



### IR BT & Lightning

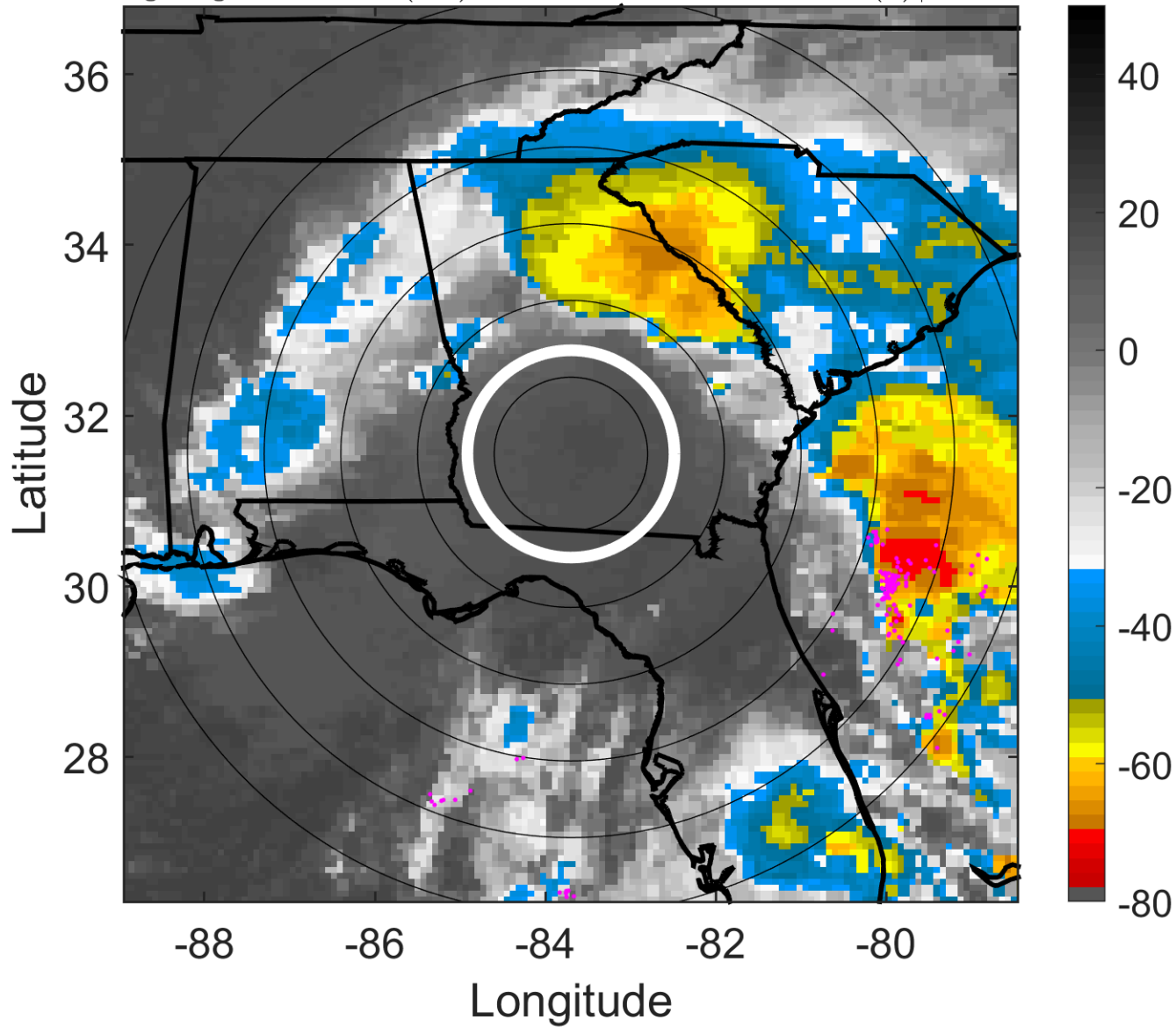
t: 2005100609 (3.4 LT)

Lightning: 3.4 LT  $\pm$  1.5 h (dots)

LAND EFFECTS

22L (TAMMY) | 30 kt TD

S: 15.2 m s<sup>-1</sup> (H) | H: 47.5°



### 6-h IR BT Differences & Lightning

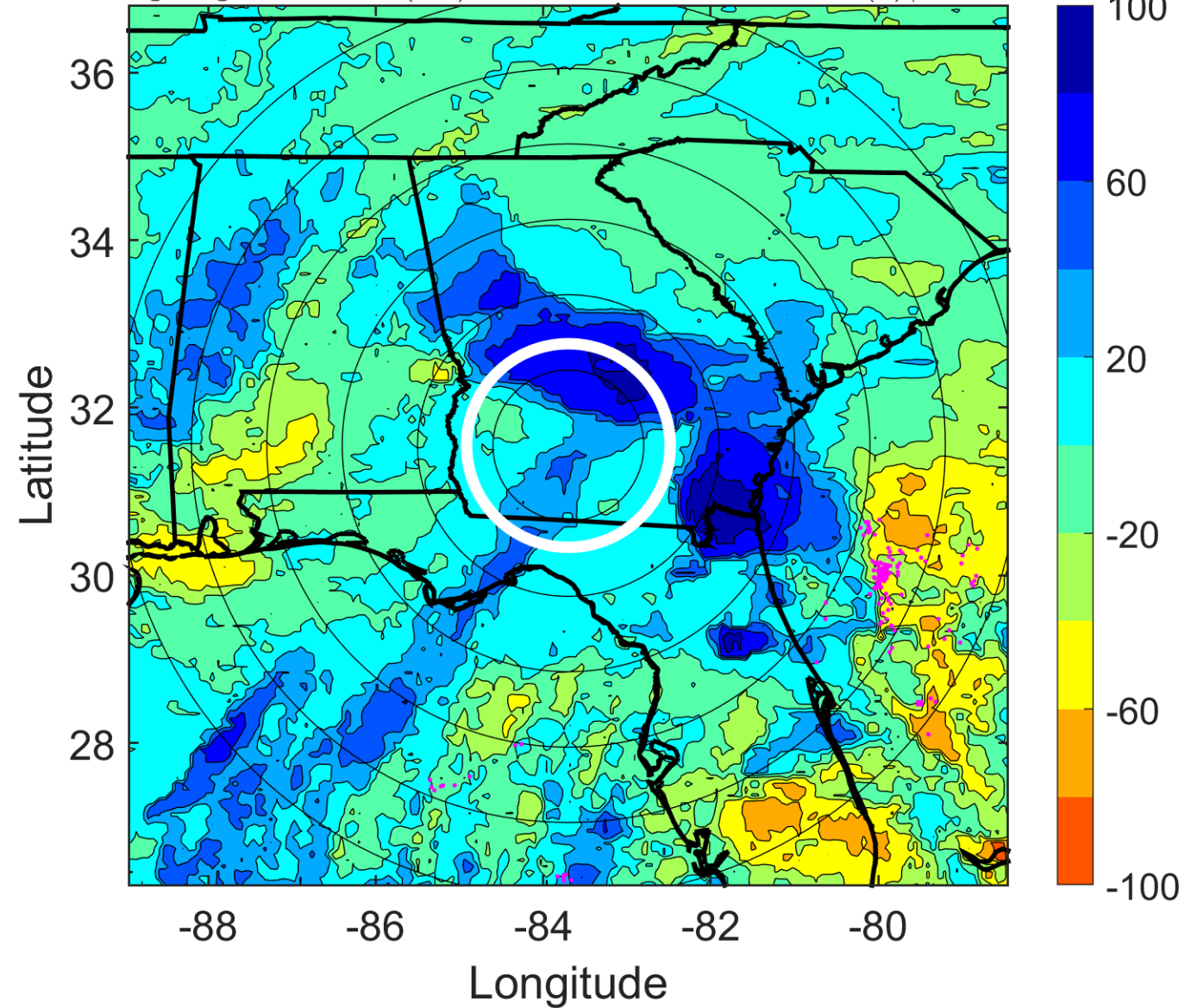
$\Delta$ t: 2005100609 (3.4 LT) - 2005100603 (21.5 LT)

Lightning: 3.4 LT  $\pm$  1.5 h (dots)

LAND EFFECTS

22L (TAMMY) | 30 kt TD

S: 15.2 m s<sup>-1</sup> (H) | H: 47.5°





### IR BT & Lightning

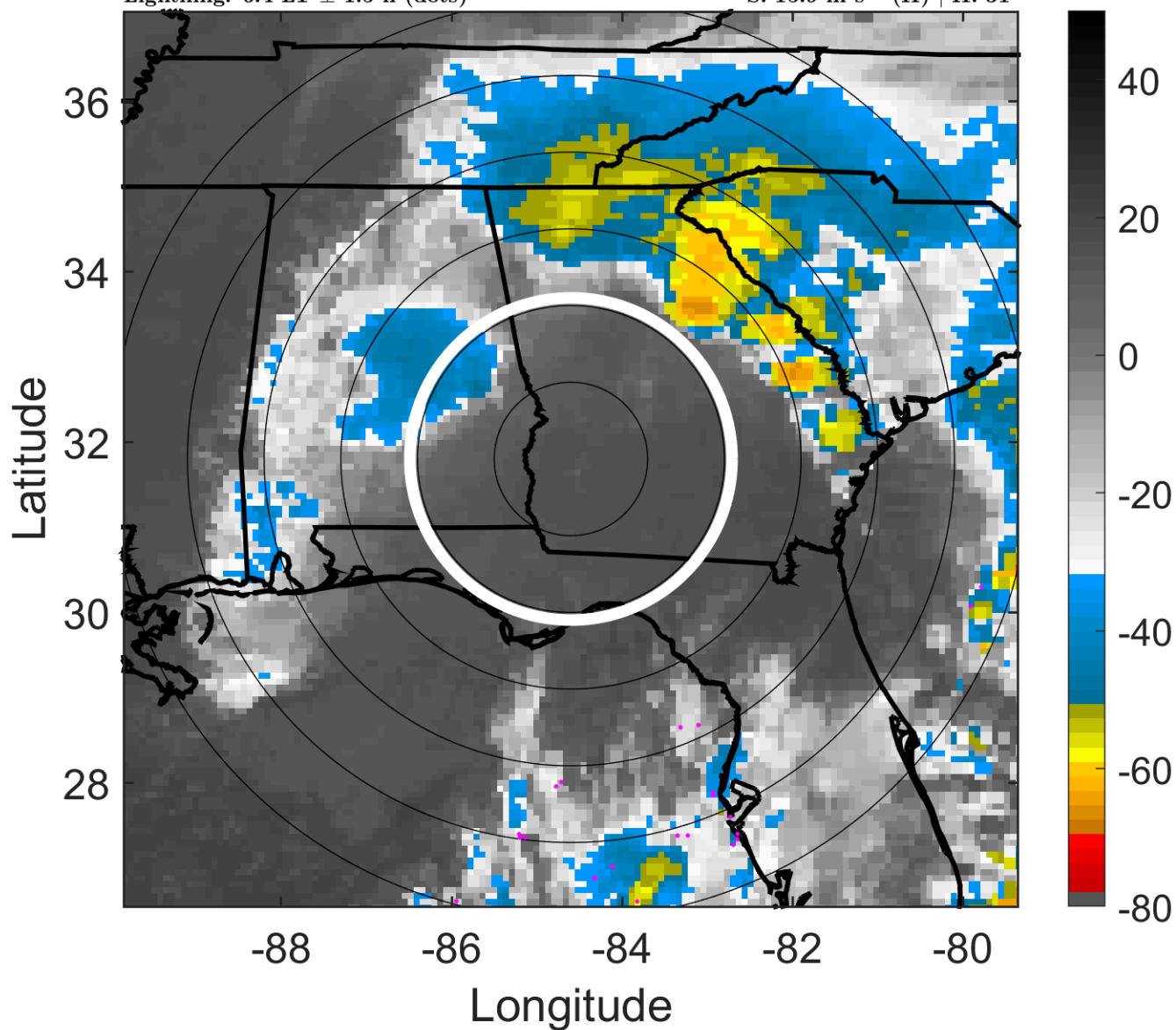
t: 2005100612 (6.4 LT)

Lightning: 6.4 LT  $\pm$  1.5 h (dots)

LAND EFFECTS

22L (TAMMY) | 25 kt TD

S: 15.9 m s<sup>-1</sup> (H) | H: 31°



### 6-h IR BT Differences & Lightning

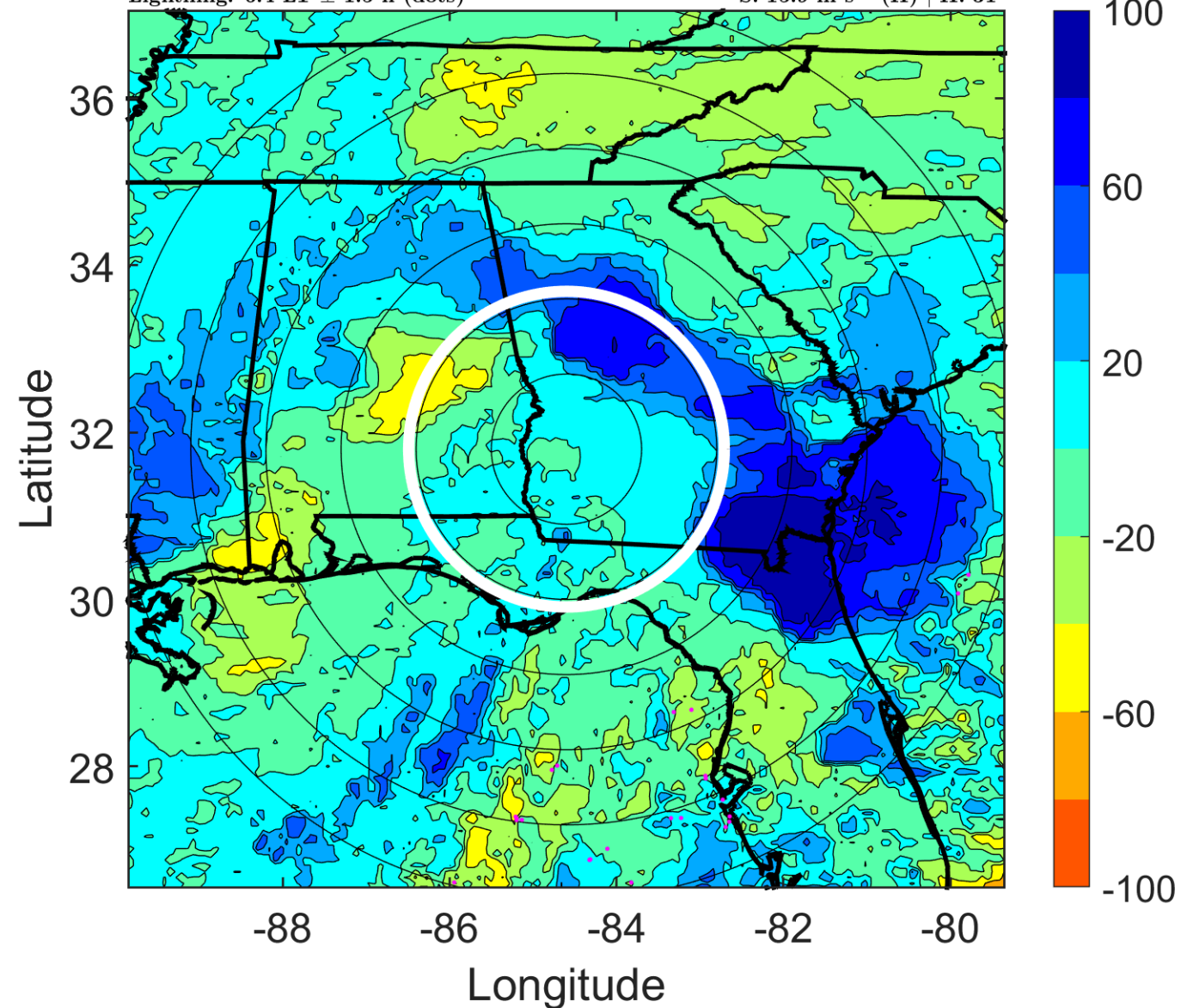
$\Delta$ t: 2005100612 (6.4 LT) - 2005100606 (0.5 LT)

Lightning: 6.4 LT  $\pm$  1.5 h (dots)

LAND EFFECTS

22L (TAMMY) | 25 kt TD

S: 15.9 m s<sup>-1</sup> (H) | H: 31°



### IR BT & Lightning

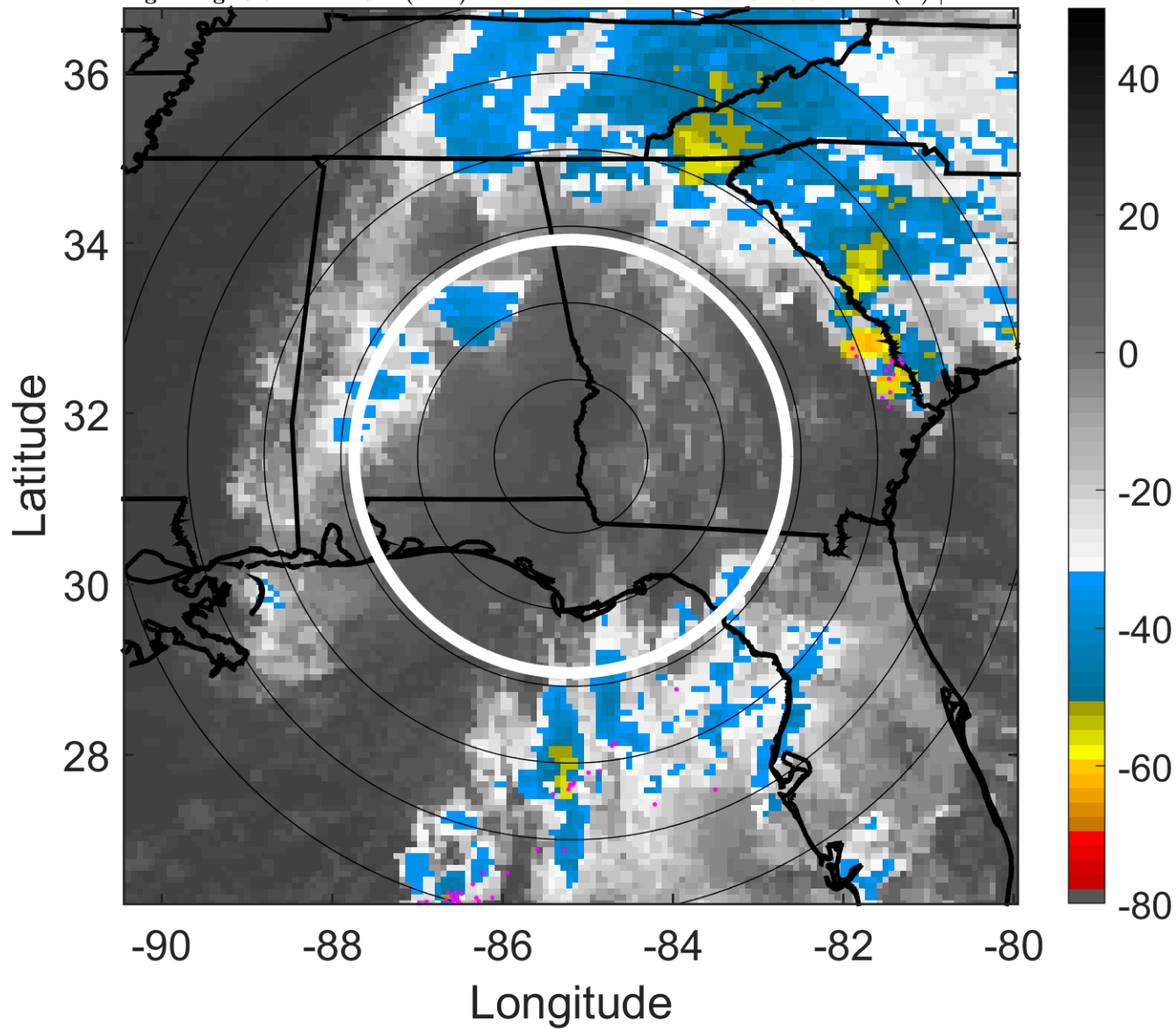
t: 2005100615 (9.3 LT)

Lightning: 9.3 LT  $\pm$  1.5 h (dots)

LAND EFFECTS

22L (TAMMY) | 20 kt TD

S: 15.8 m s<sup>-1</sup> (H) | H: 24°



### 6-h IR BT Differences & Lightning

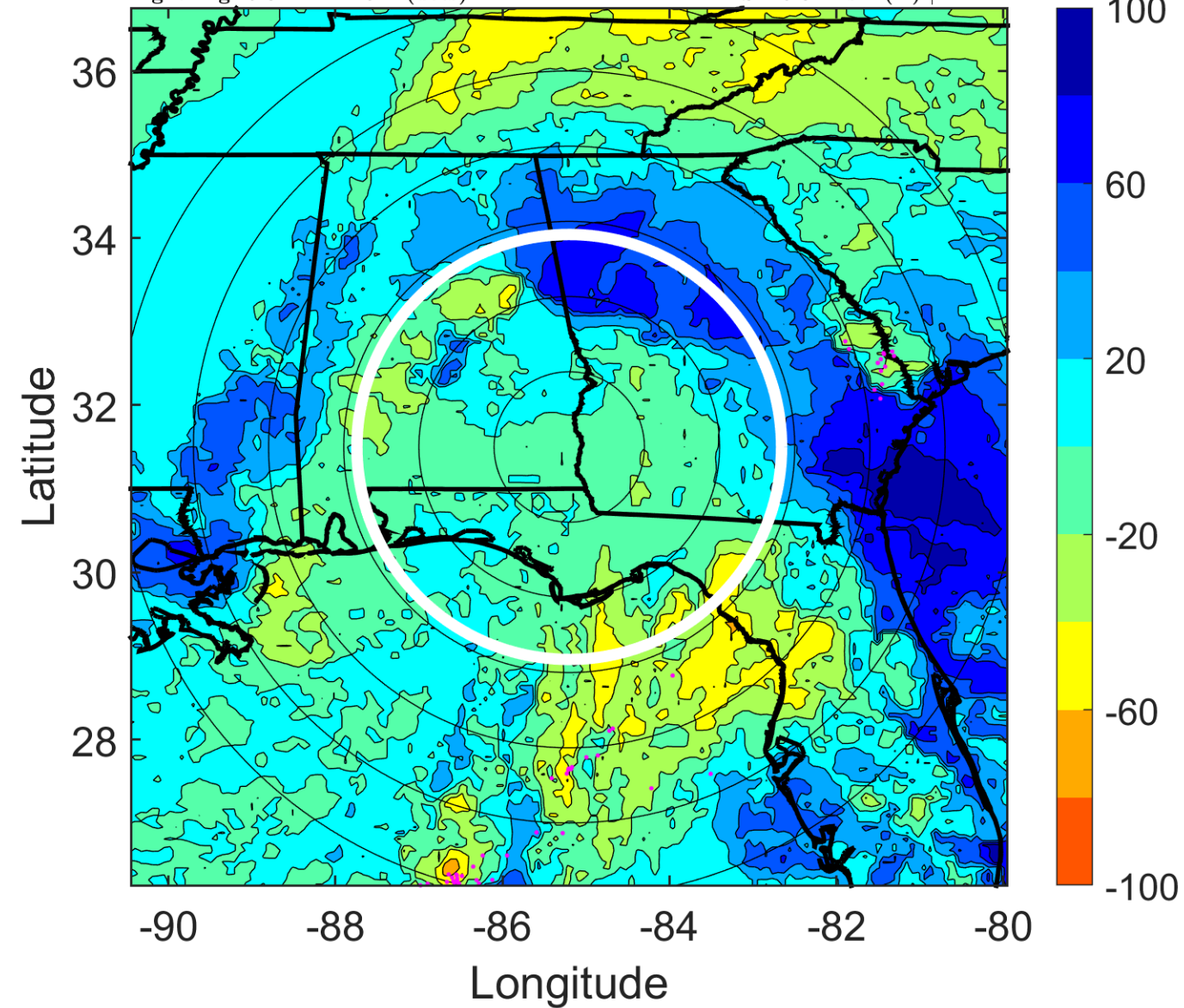
$\Delta$ t: 2005100615 (9.3 LT) - 2005100609 (3.4 LT)

Lightning: 9.3 LT  $\pm$  1.5 h (dots)

LAND EFFECTS

22L (TAMMY) | 20 kt TD

S: 15.8 m s<sup>-1</sup> (H) | H: 24°



### IR BT & Lightning

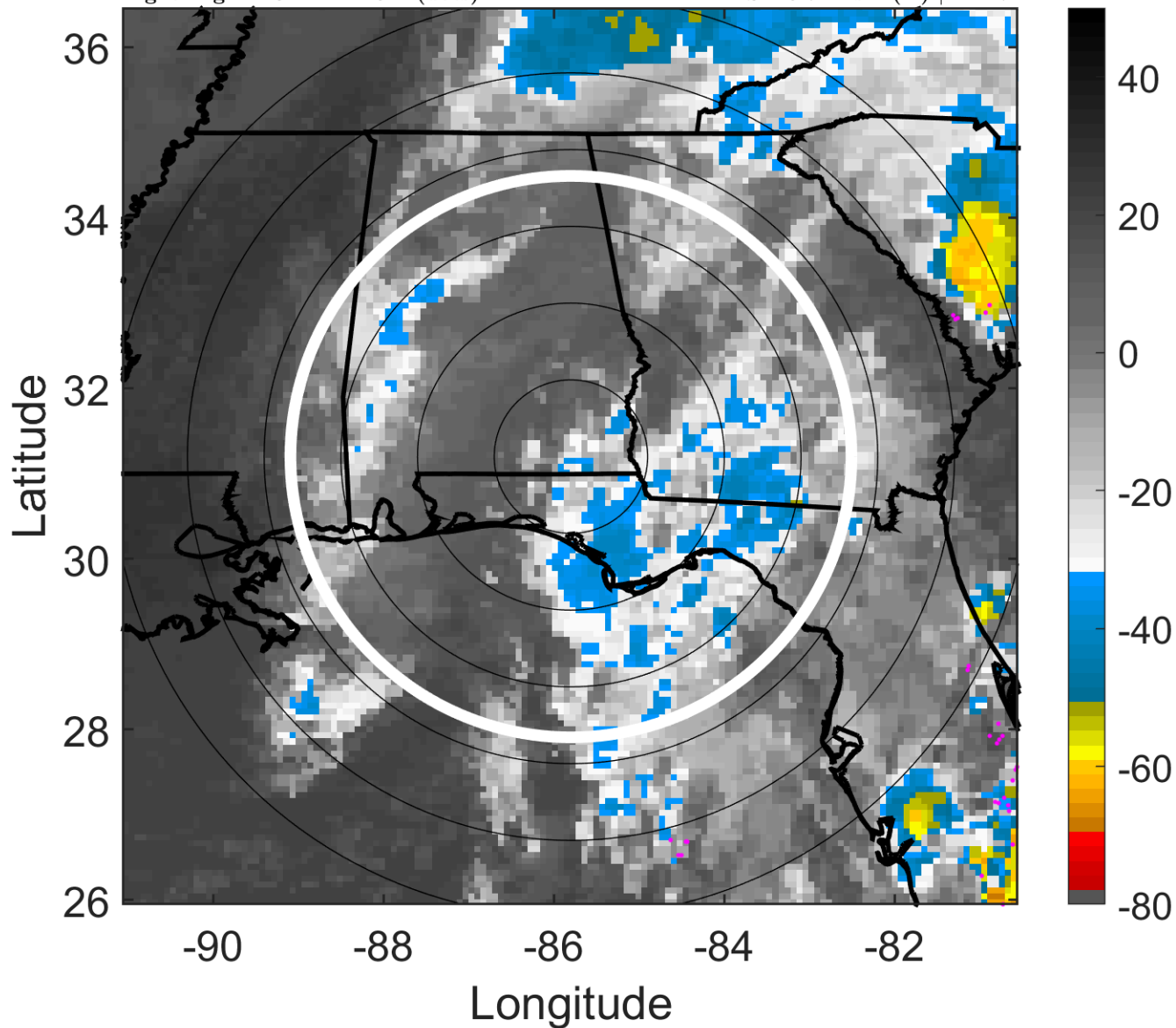
t: 2005100618 (12.3 LT)

Lightning: 12.3 LT  $\pm$  1.5 h (dots)

LAND EFFECTS

22L (TAMMY) | 15 kt TD

S: 15.7 m s<sup>-1</sup> (H) | H: 17°



### 6-h IR BT Differences & Lightning

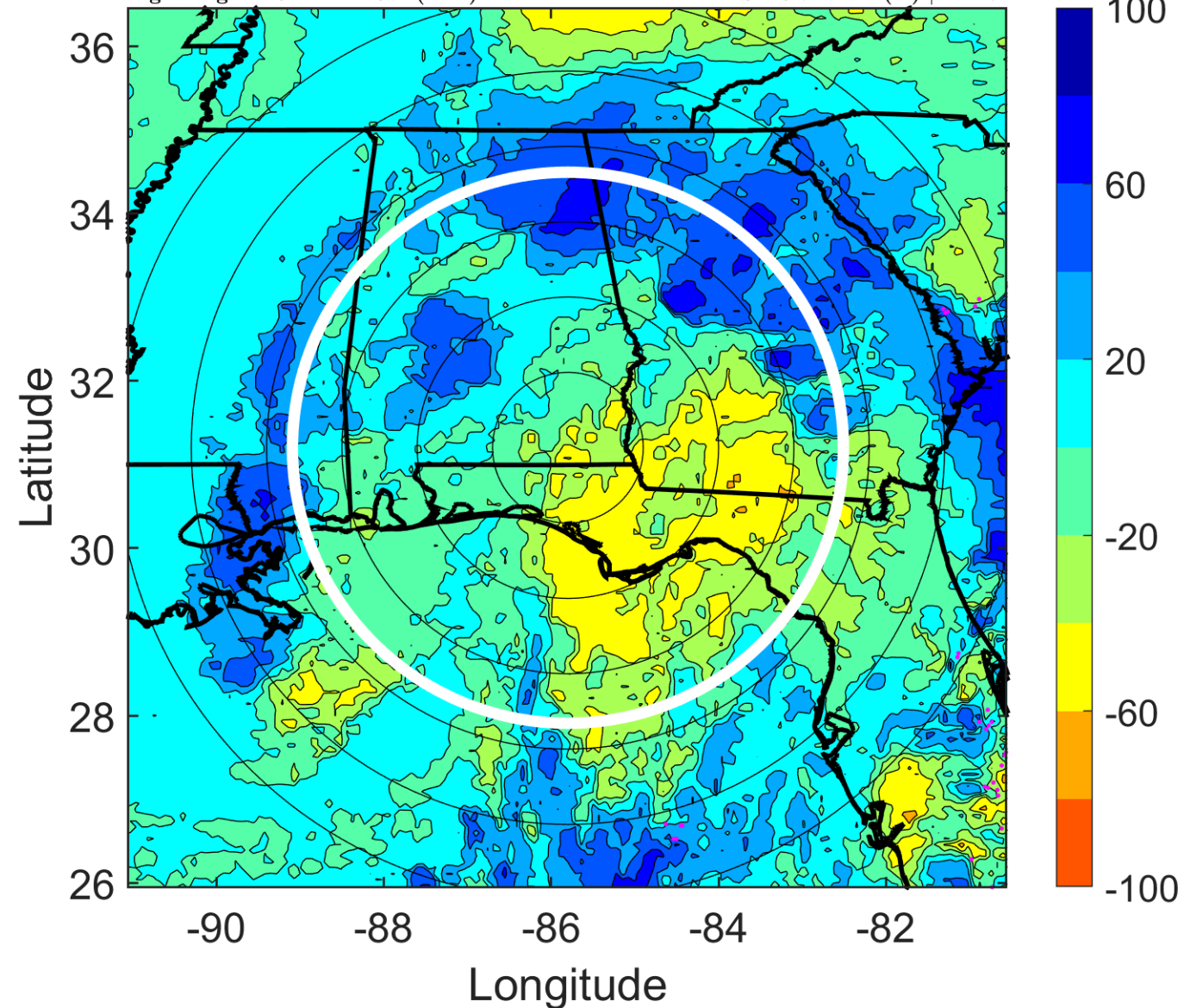
$\Delta$ t: 2005100618 (12.3 LT) - 2005100612 (6.4 LT)

Lightning: 12.3 LT  $\pm$  1.5 h (dots)

LAND EFFECTS

22L (TAMMY) | 15 kt TD

S: 15.7 m s<sup>-1</sup> (H) | H: 17°



### IR BT & Lightning

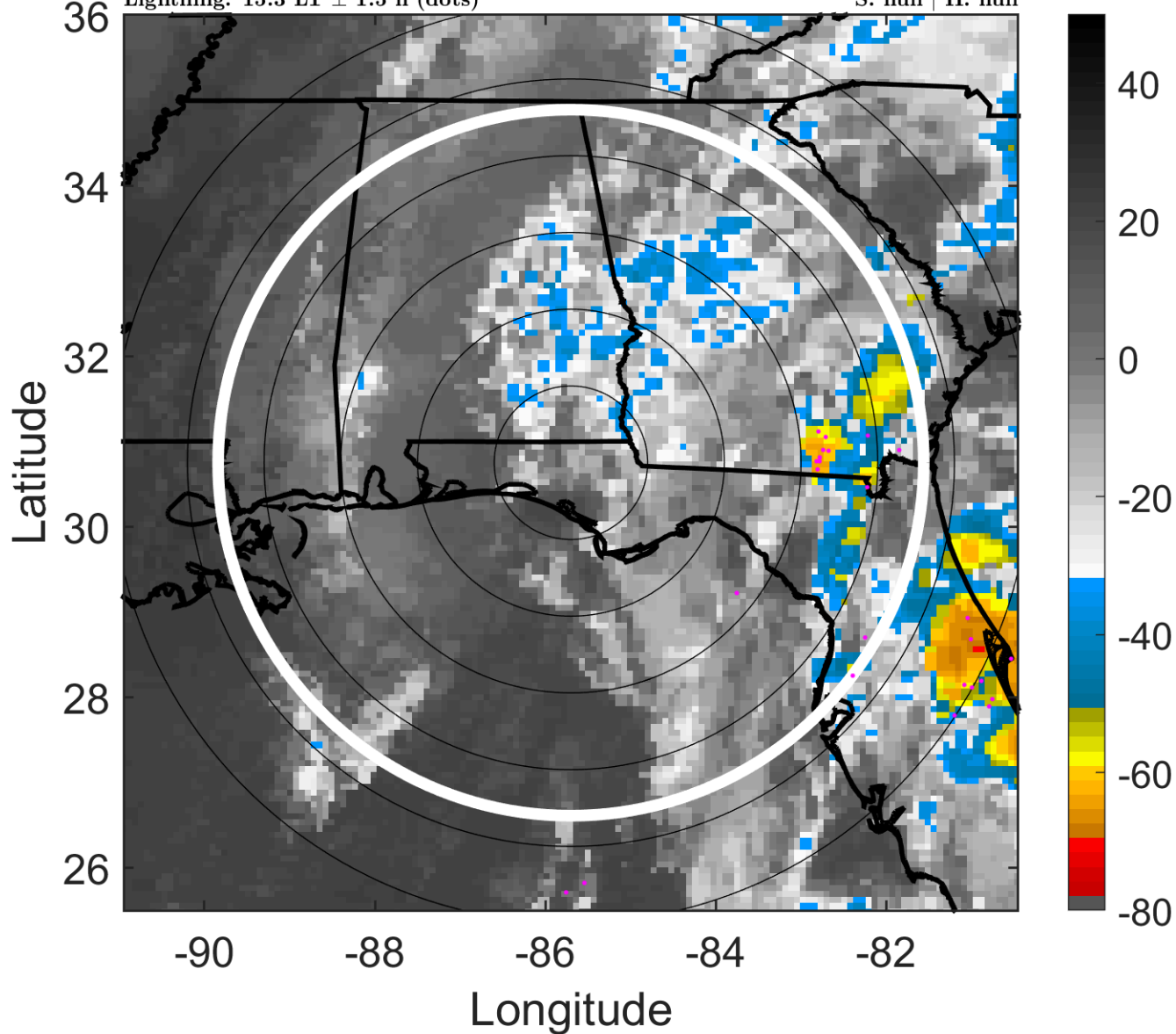
t: 2005100621 (15.3 LT)

Lightning: 15.3 LT  $\pm$  1.5 h (dots)

LAND EFFECTS

22L (TAMMY) | 12.5 kt TD

S: null | H: null



### 6-h IR BT Differences & Lightning

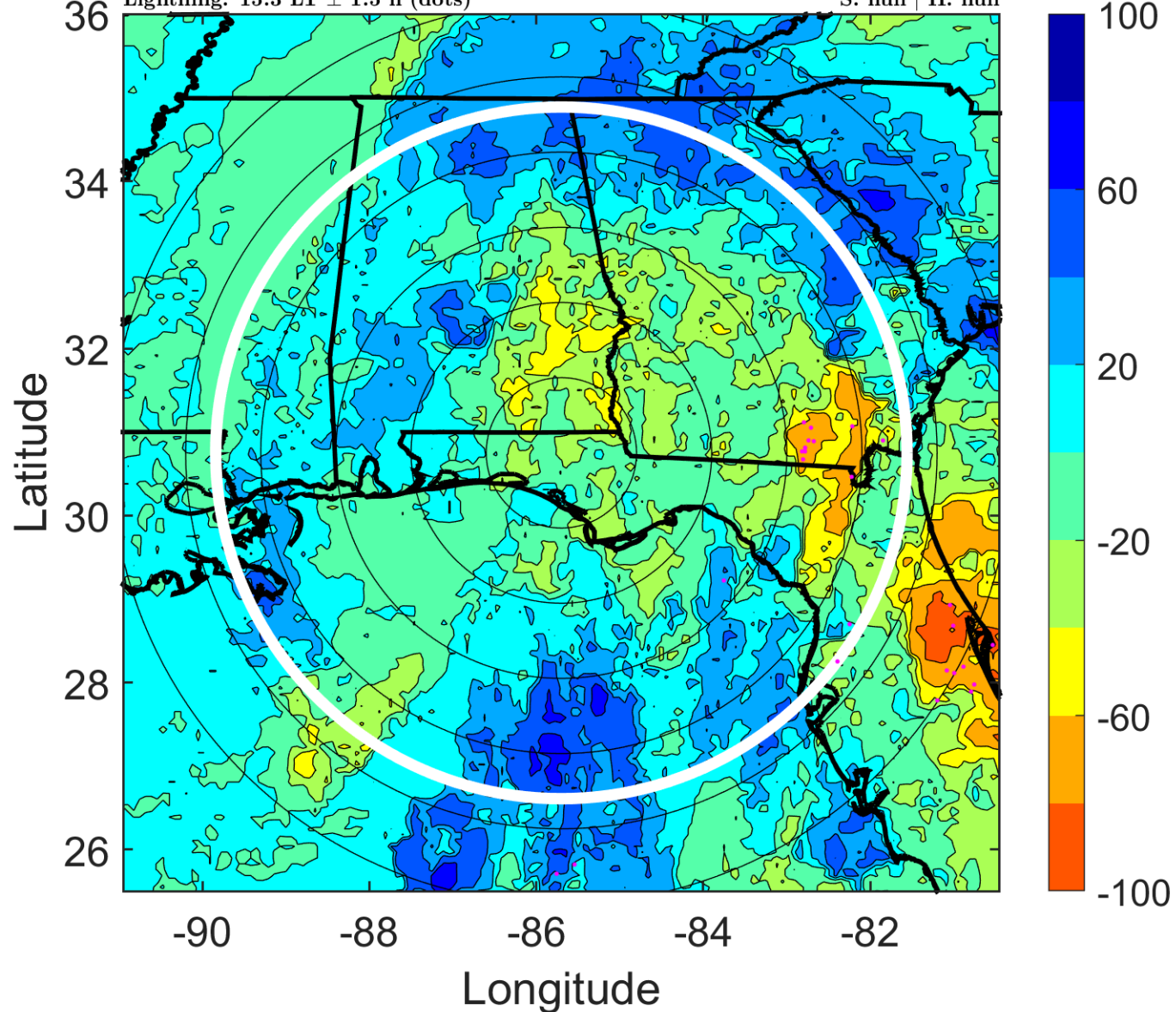
$\Delta$ t: 2005100621 (15.3 LT) - 2005100615 (9.3 LT)

Lightning: 15.3 LT  $\pm$  1.5 h (dots)

LAND EFFECTS

22L (TAMMY) | 12.5 kt TD

S: null | H: null



### IR BT & Lightning

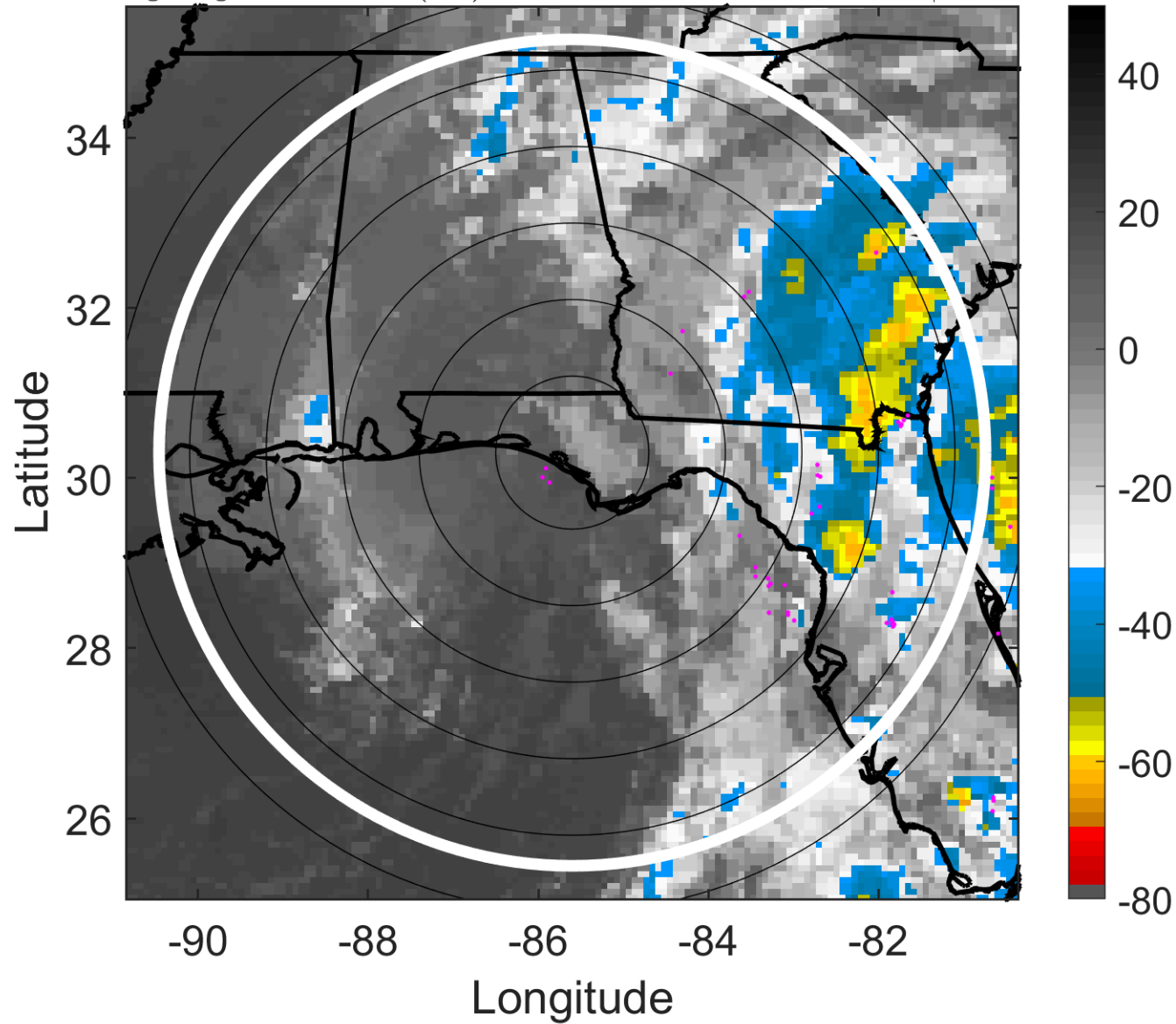
t: 2005100700 (18.3 LT)

Lightning: 18.3 LT  $\pm$  1.5 h (dots)

LAND EFFECTS

22L (TAMMY) | 10 kt LO

S: null | H: null



### 6-h IR BT Differences & Lightning

$\Delta$ t: 2005100700 (18.3 LT) - 2005100618 (12.3 LT)

Lightning: 18.3 LT  $\pm$  1.5 h (dots)

LAND EFFECTS

22L (TAMMY) | 10 kt LO

S: null | H: null

