

IR BT & Lightning

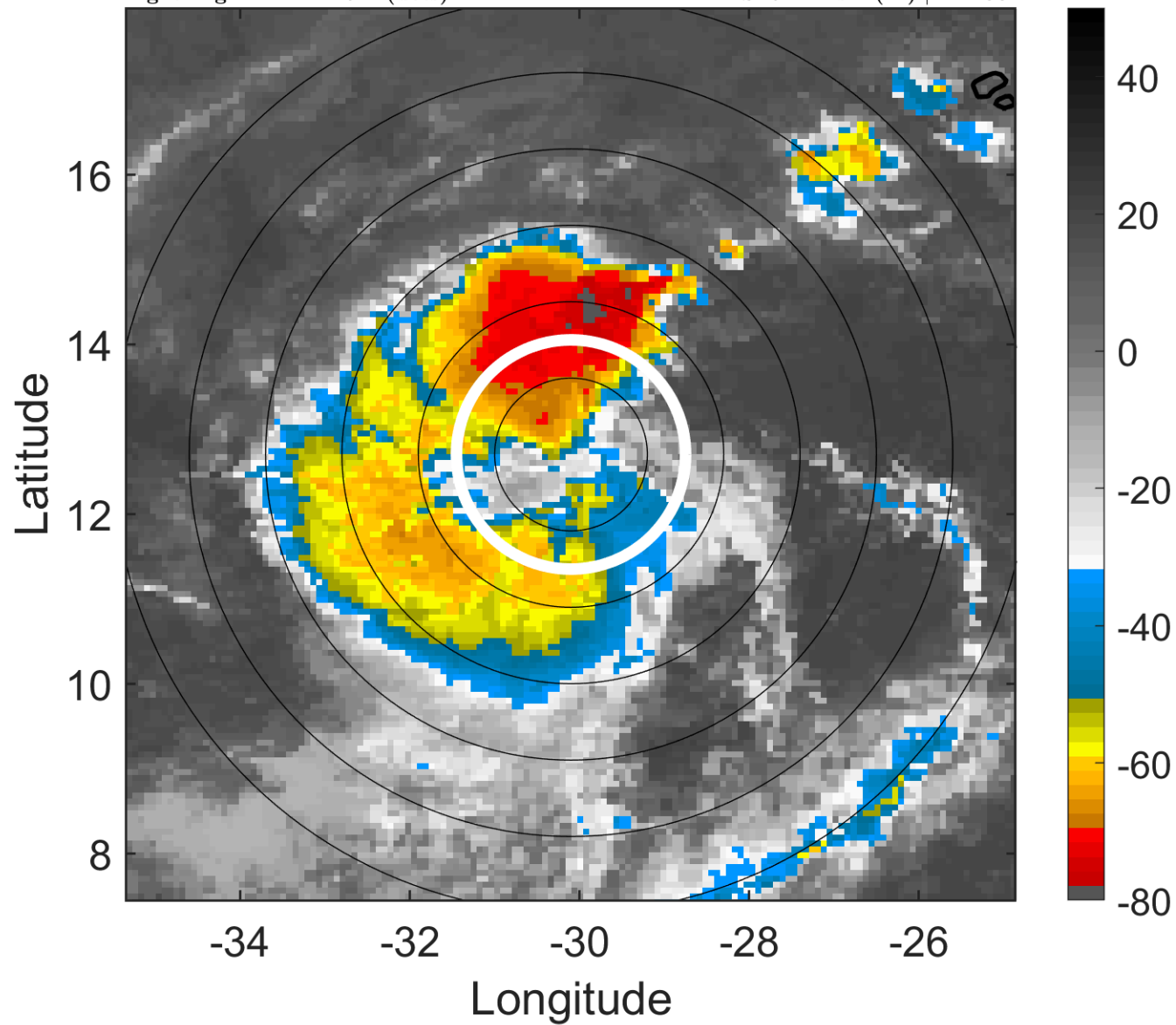
t: 2011082506 (4 LT)

Lightning: 4 LT \pm 1.5 h (dots)

PT: SLCP | EA: QUASI

10L (TEN) | 30 kt TD

S: 9.1 m s⁻¹ (M) | H: 238°



6-h IR BT Differences & Lightning

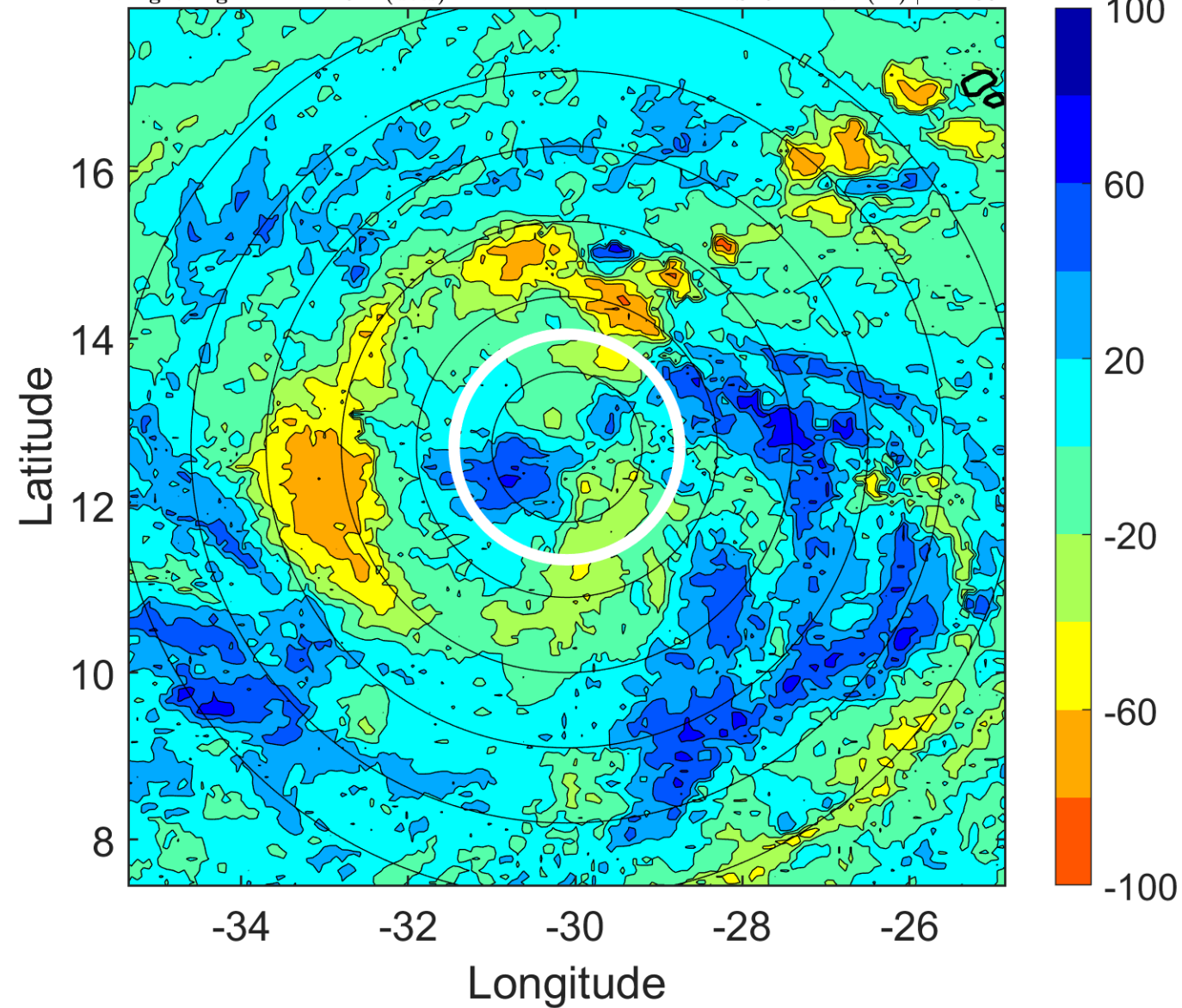
Δ t: 2011082506 (4 LT) - 2011082500 (22.1 LT)

Lightning: 4 LT \pm 1.5 h (dots)

PT: SLCP | EA: QUASI

10L (TEN) | 30 kt TD

S: 9.1 m s⁻¹ (M) | H: 238°



IR BT & Lightning

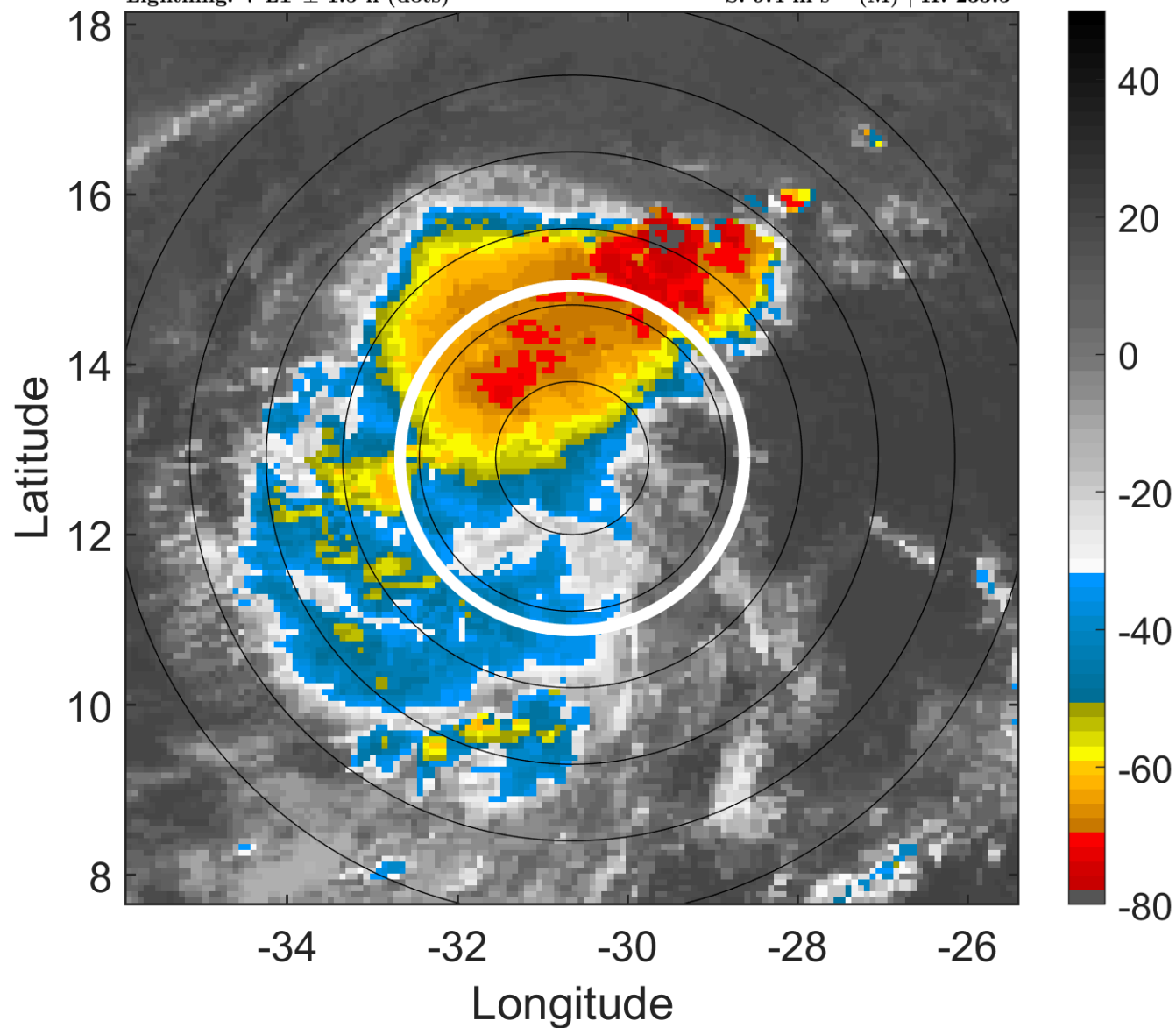
t: 2011082509 (7 LT)

Lightning: 7 LT \pm 1.5 h (dots)

PT: SLCP | EA: QUASI

10L (TEN) | 30 kt TD

S: 9.4 m s⁻¹ (M) | H: 233.5°



6-h IR BT Differences & Lightning

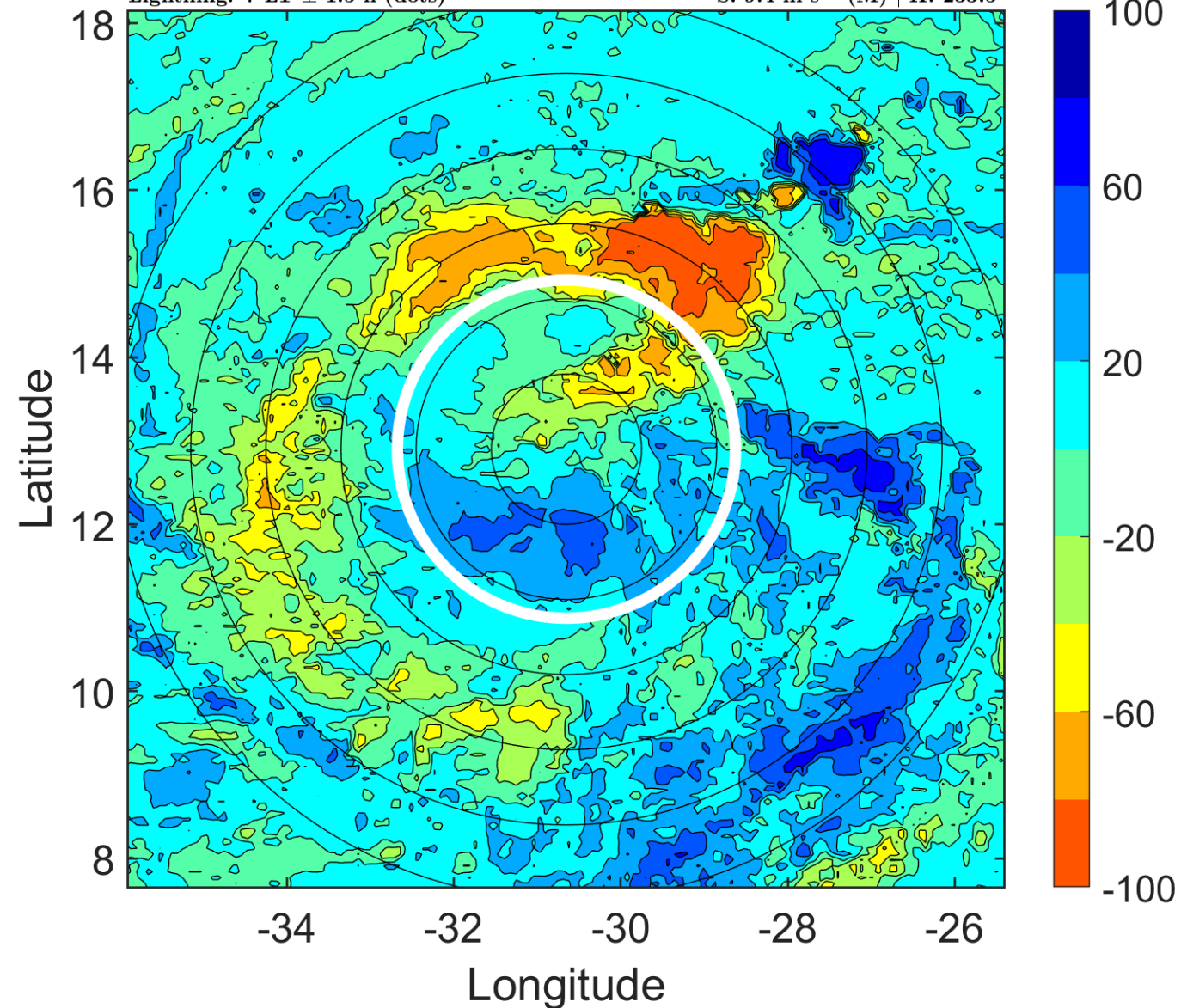
Δ t: 2011082509 (7 LT) - 2011082503 (1 LT)

Lightning: 7 LT \pm 1.5 h (dots)

PT: SLCP | EA: QUASI

10L (TEN) | 30 kt TD

S: 9.4 m s⁻¹ (M) | H: 233.5°



IR BT & Lightning

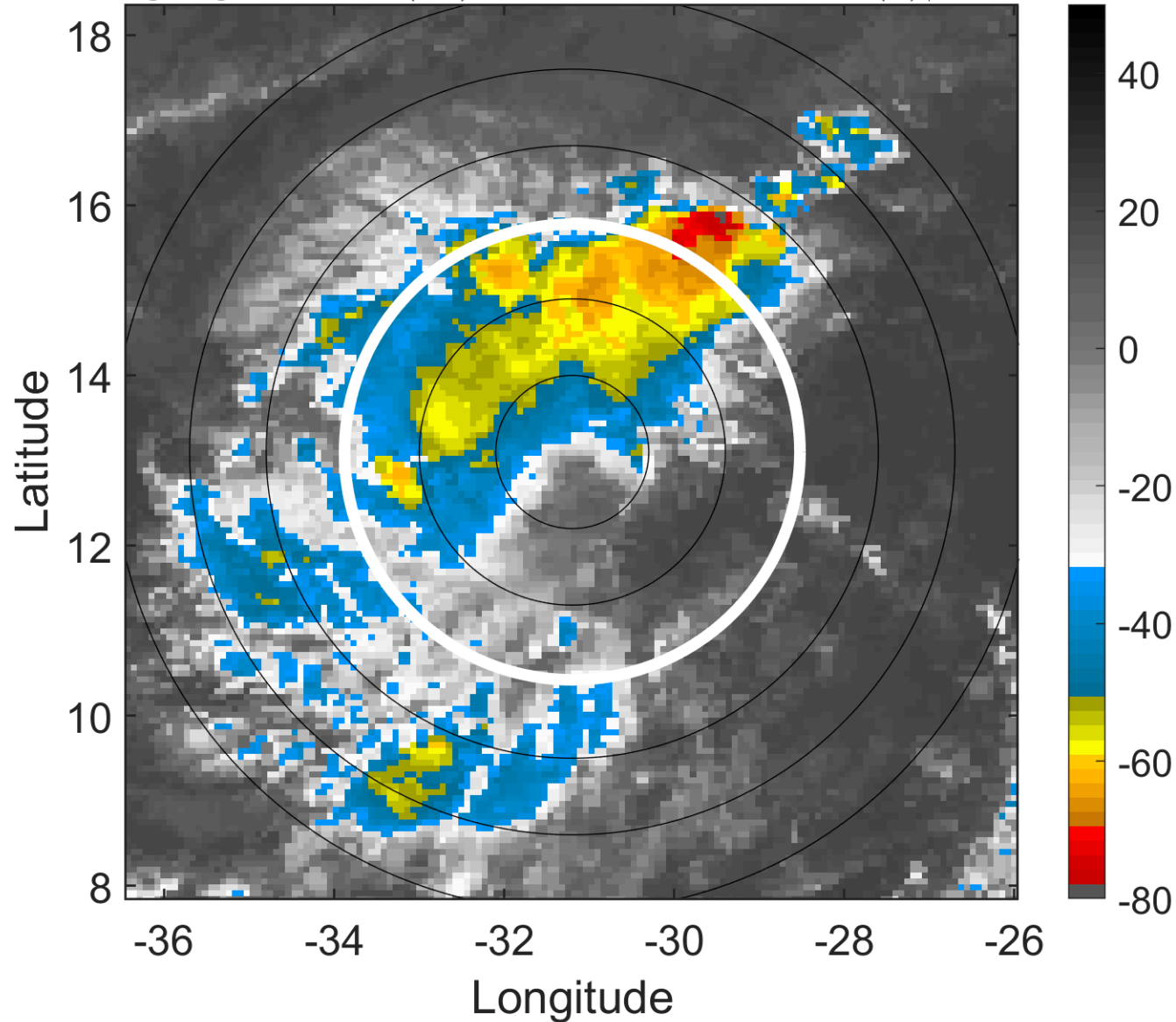
t: 2011082512 (9.9 LT)

Lightning: 9.9 LT \pm 1.5 h (dots)

PT: SLCP | EA: QUASI

10L (TEN) | 30 kt TD

S: 9.7 m s⁻¹ (M) | H: 229°



6-h IR BT Differences & Lightning

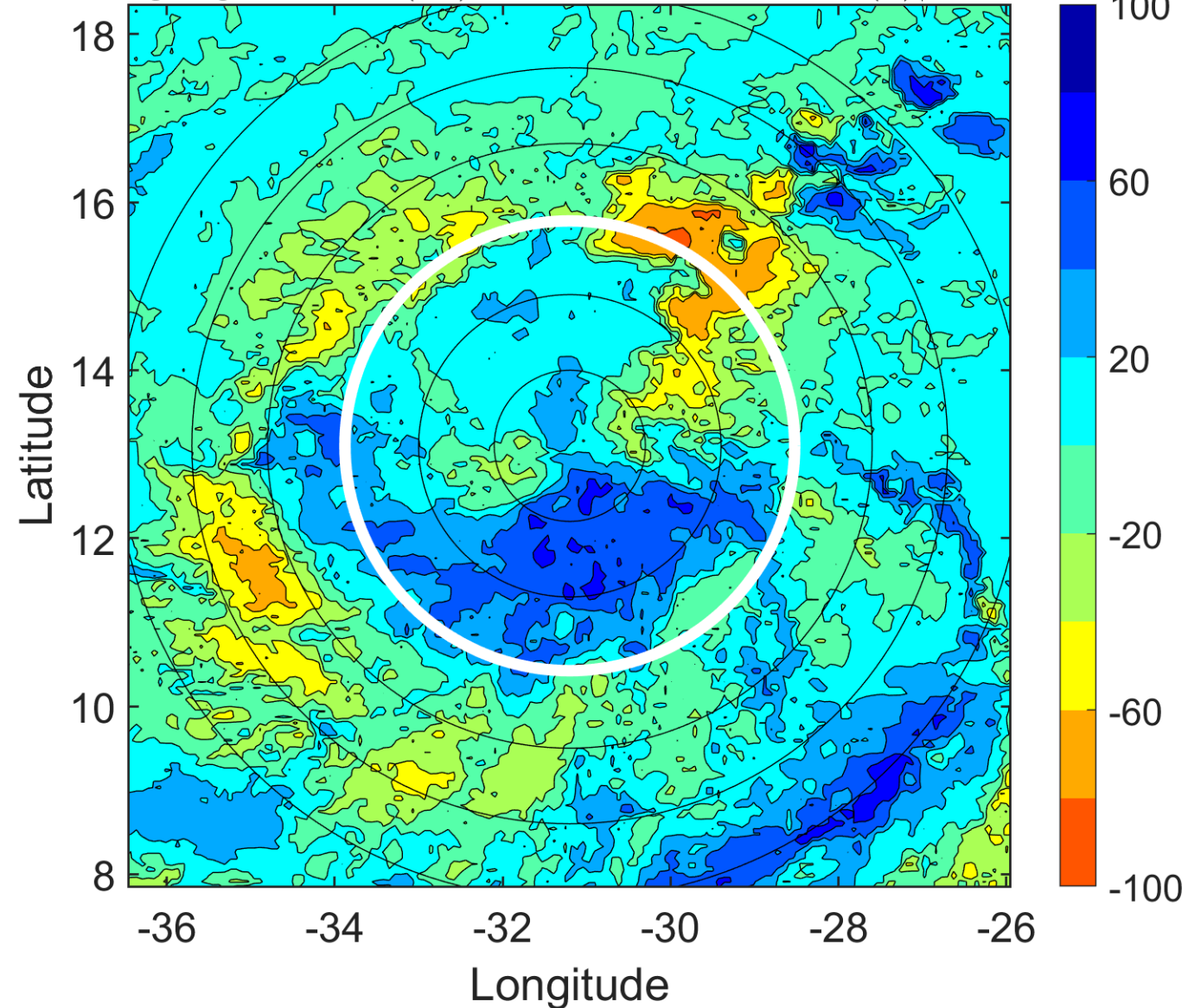
Δ t: 2011082512 (9.9 LT) - 2011082506 (4 LT)

Lightning: 9.9 LT \pm 1.5 h (dots)

PT: SLCP | EA: QUASI

10L (TEN) | 30 kt TD

S: 9.7 m s⁻¹ (M) | H: 229°



IR BT & Lightning

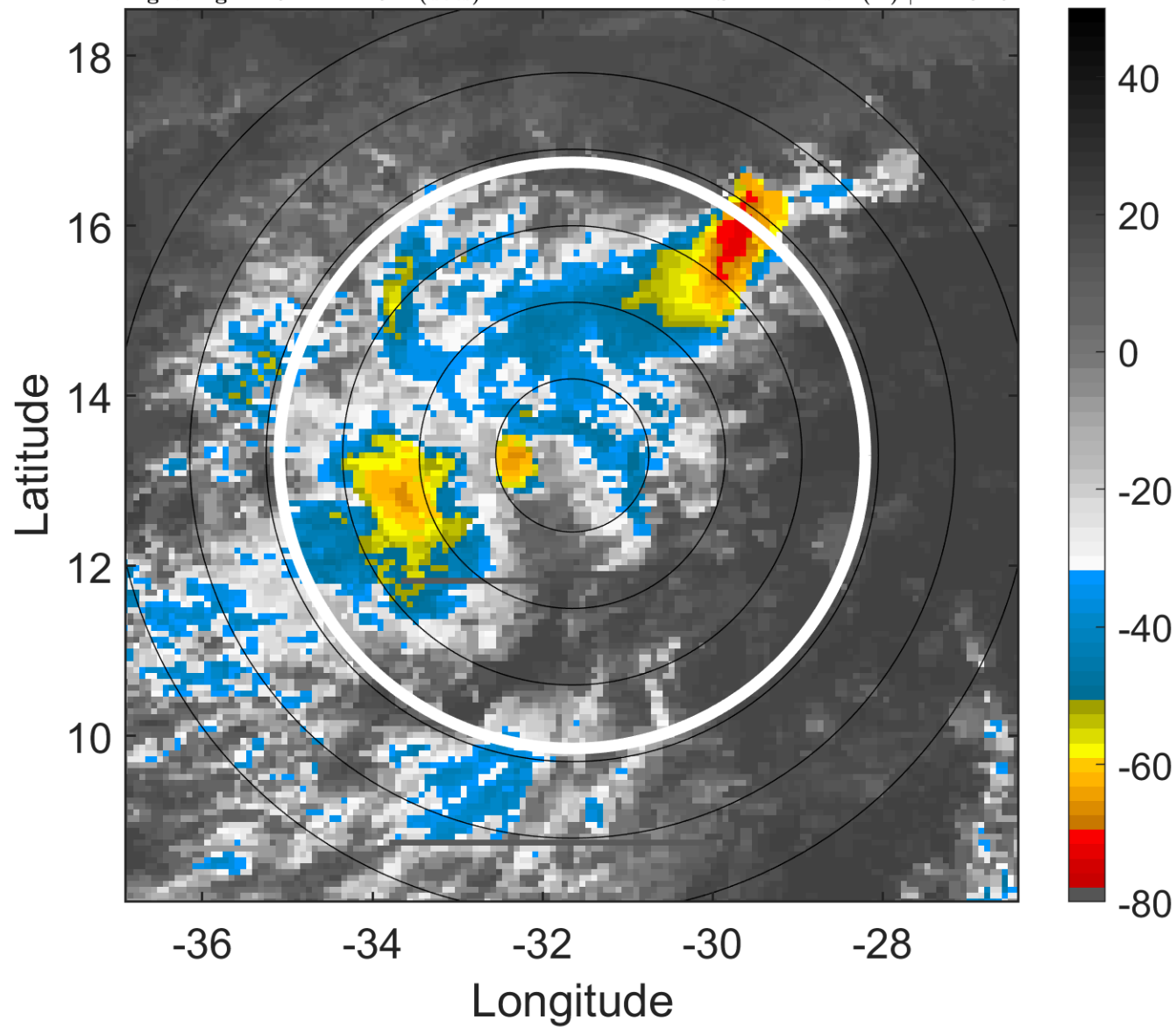
t: 2011082515 (12.9 LT)

Lightning: 12.9 LT \pm 1.5 h (dots)

PT: SLCP | EA: QUASI

10L (TEN) | 30 kt TD

S: 11.1 m s⁻¹ (H) | H: 231.5°



6-h IR BT Differences & Lightning

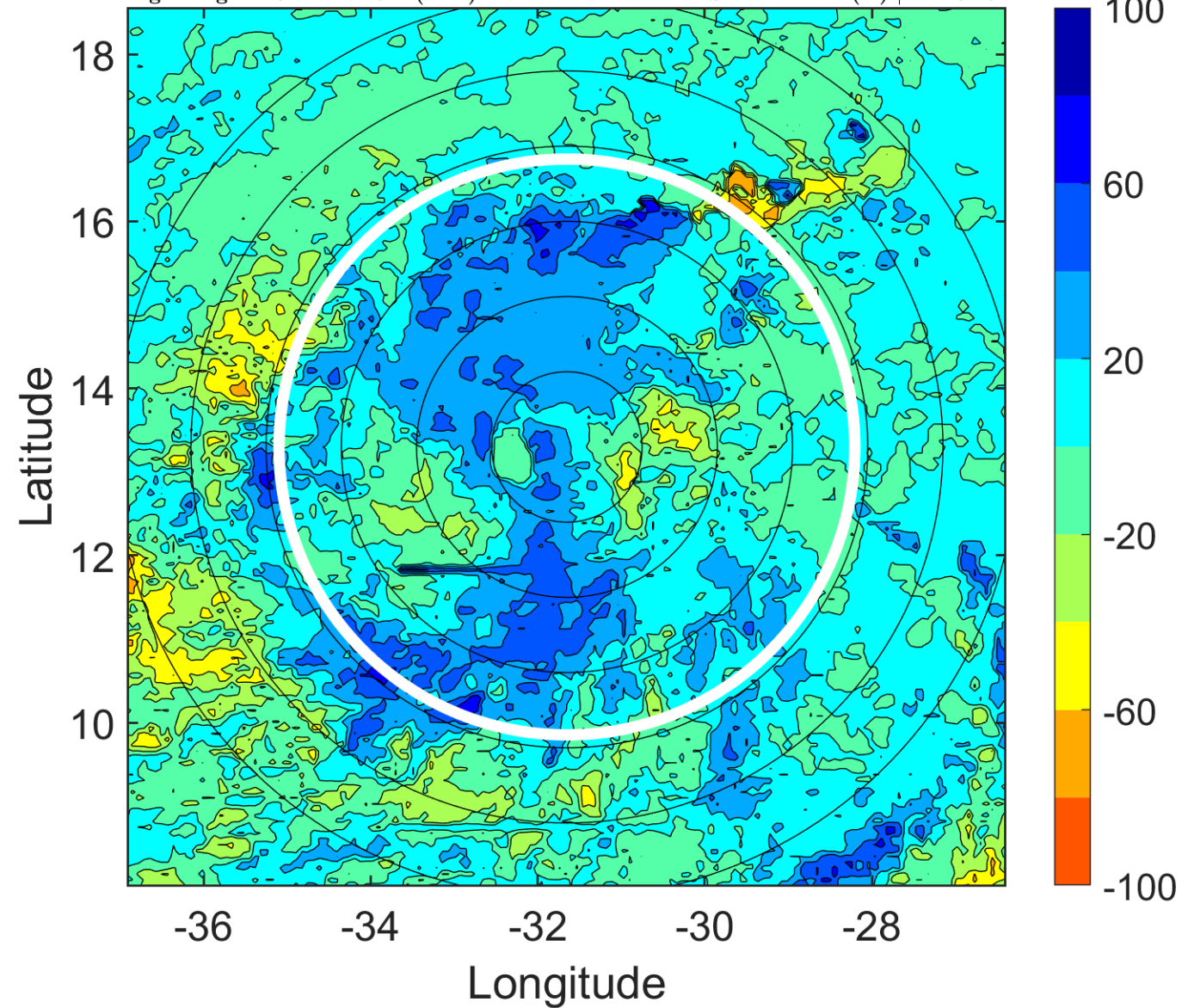
Δ t: 2011082515 (12.9 LT) - 2011082509 (7 LT)

Lightning: 12.9 LT \pm 1.5 h (dots)

PT: SLCP | EA: QUASI

10L (TEN) | 30 kt TD

S: 11.1 m s⁻¹ (H) | H: 231.5°



IR BT & Lightning

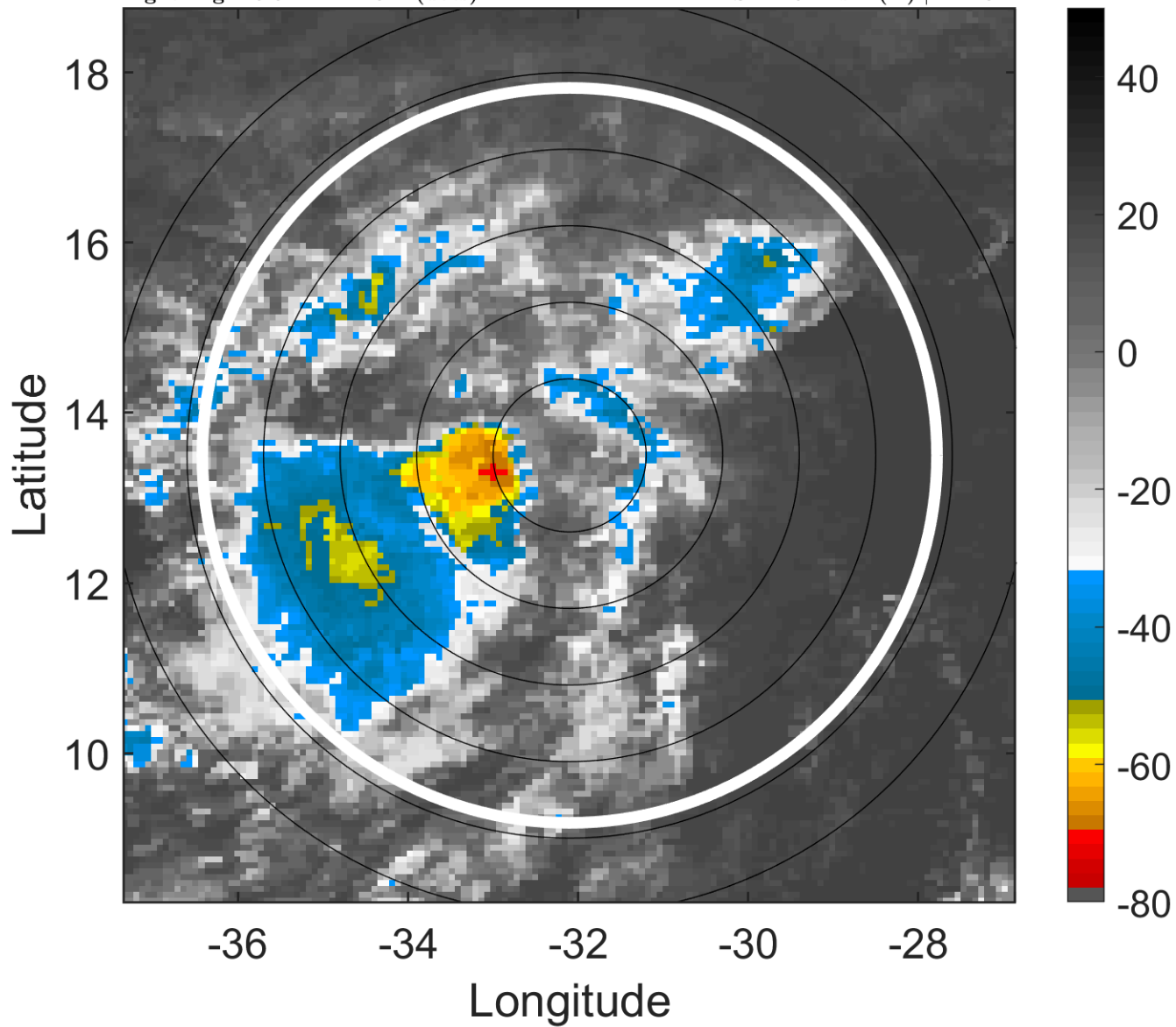
t: 2011082518 (15.9 LT)

Lightning: 15.9 LT \pm 1.5 h (dots)

PT: SLCP | EA: QUASI

10L (TEN) | 30 kt TD

S: 12.6 m s⁻¹ (H) | H: 234°



6-h IR BT Differences & Lightning

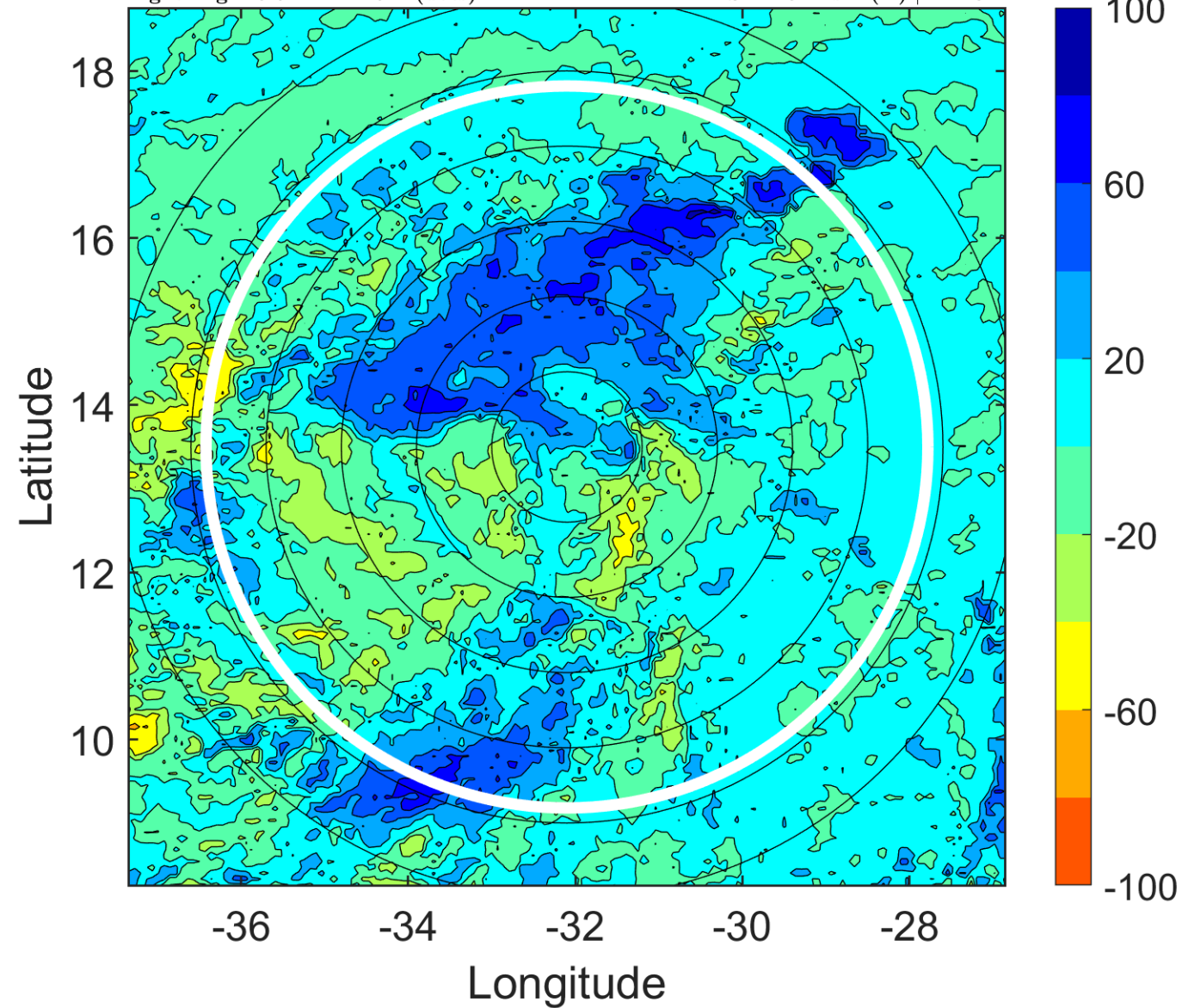
Δ t: 2011082518 (15.9 LT) - 2011082512 (9.9 LT)

Lightning: 15.9 LT \pm 1.5 h (dots)

PT: SLCP | EA: QUASI

10L (TEN) | 30 kt TD

S: 12.6 m s⁻¹ (H) | H: 234°



IR BT & Lightning

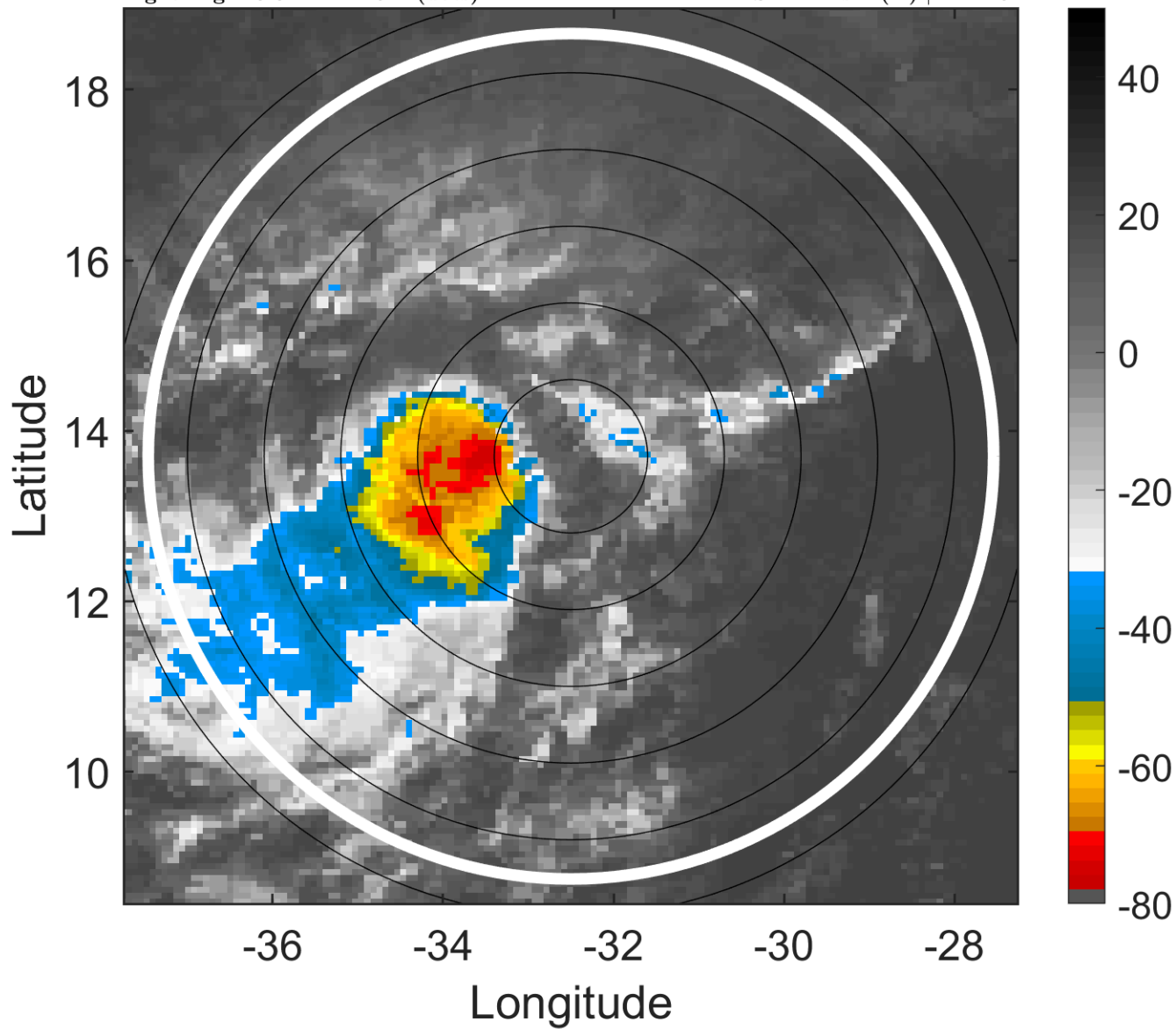
t: 2011082521 (18.8 LT)

Lightning: 18.8 LT \pm 1.5 h (dots)

PT: SLCP | EA: QUASI

10L (TEN) | 30 kt TD

S: 11 m s⁻¹ (H) | H: 228°



6-h IR BT Differences & Lightning

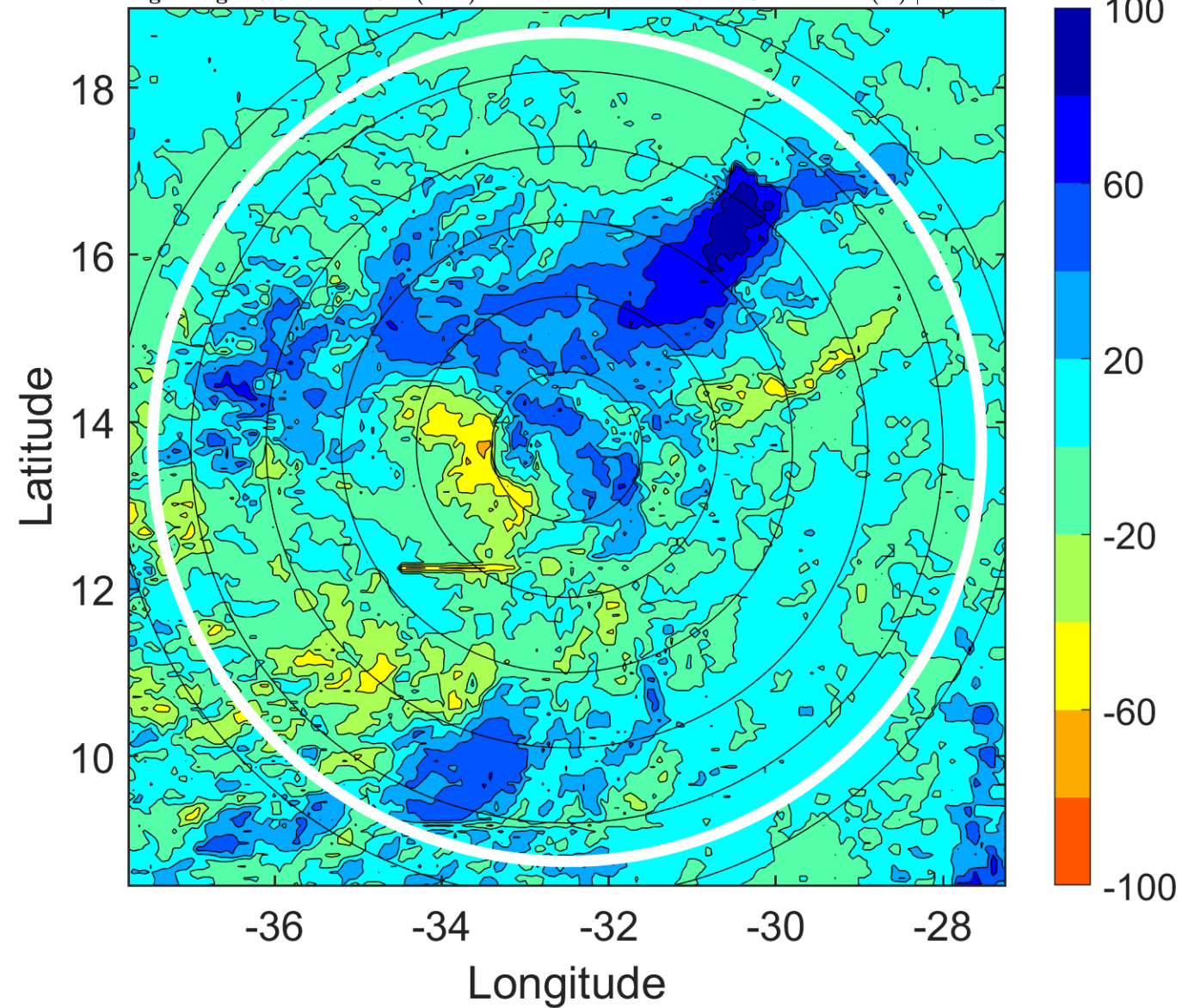
Δ t: 2011082521 (18.8 LT) - 2011082515 (12.9 LT)

Lightning: 18.8 LT \pm 1.5 h (dots)

PT: SLCP | EA: QUASI

10L (TEN) | 30 kt TD

S: 11 m s⁻¹ (H) | H: 228°



IR BT & Lightning

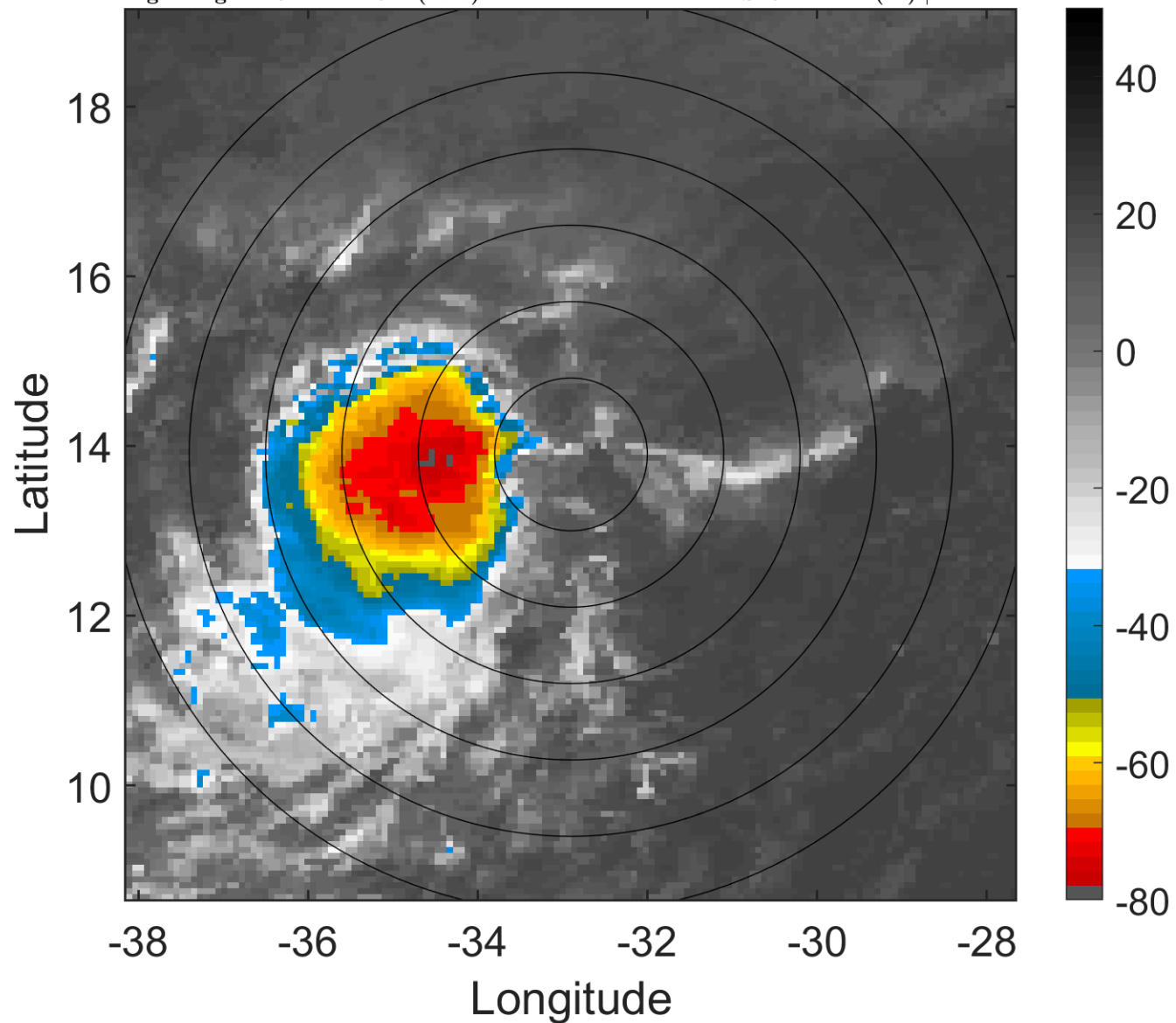
t: 2011082600 (21.8 LT)

Lightning: 21.8 LT \pm 1.5 h (dots)

PT: SLCP | EA: QUASI

10L (TEN) | 30 kt TD

S: 9.4 m s⁻¹ (M) | H: 222°



6-h IR BT Differences & Lightning

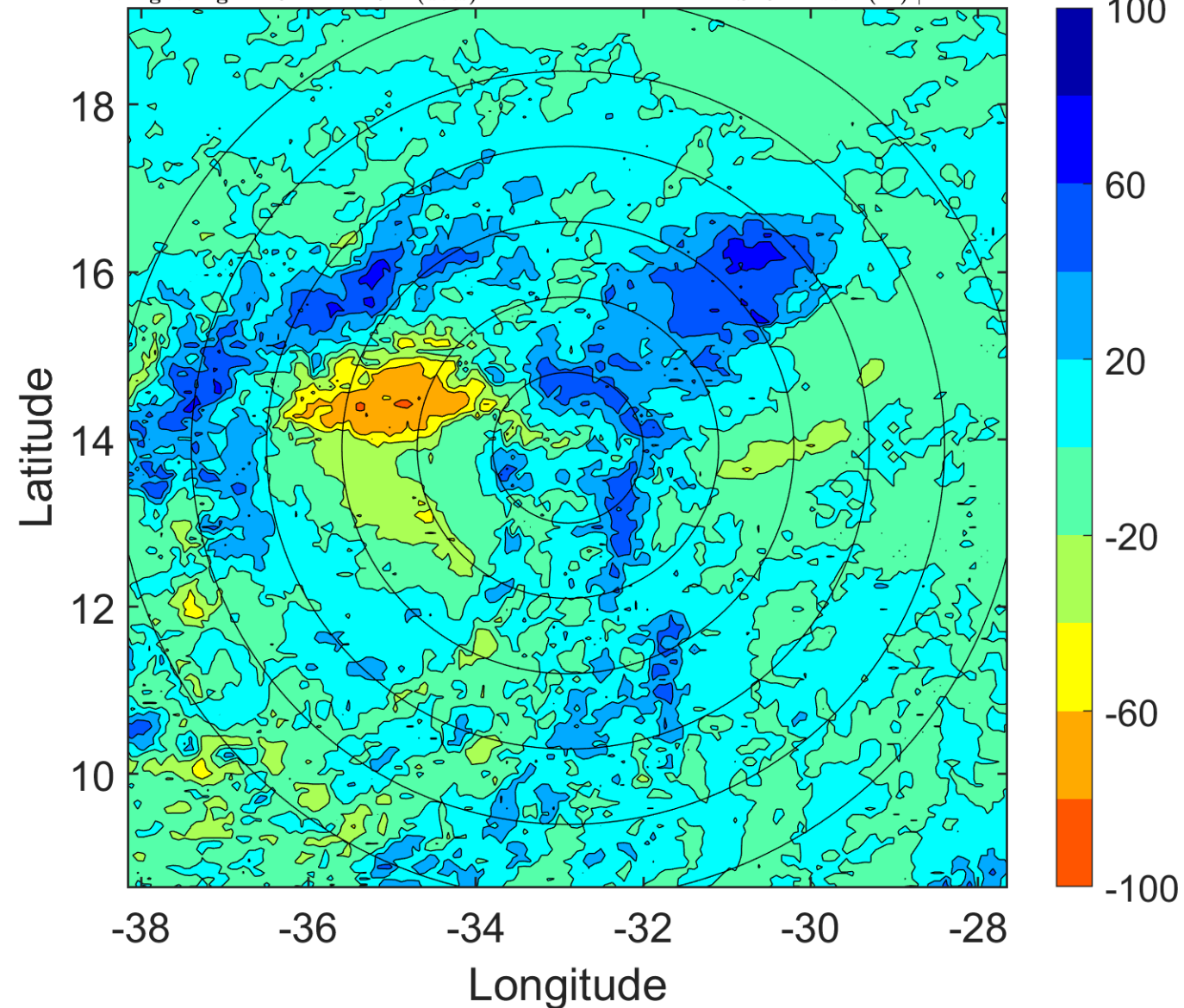
Δ t: 2011082600 (21.8 LT) - 2011082518 (15.9 LT)

Lightning: 21.8 LT \pm 1.5 h (dots)

PT: SLCP | EA: QUASI

10L (TEN) | 30 kt TD

S: 9.4 m s⁻¹ (M) | H: 222°



IR BT & Lightning

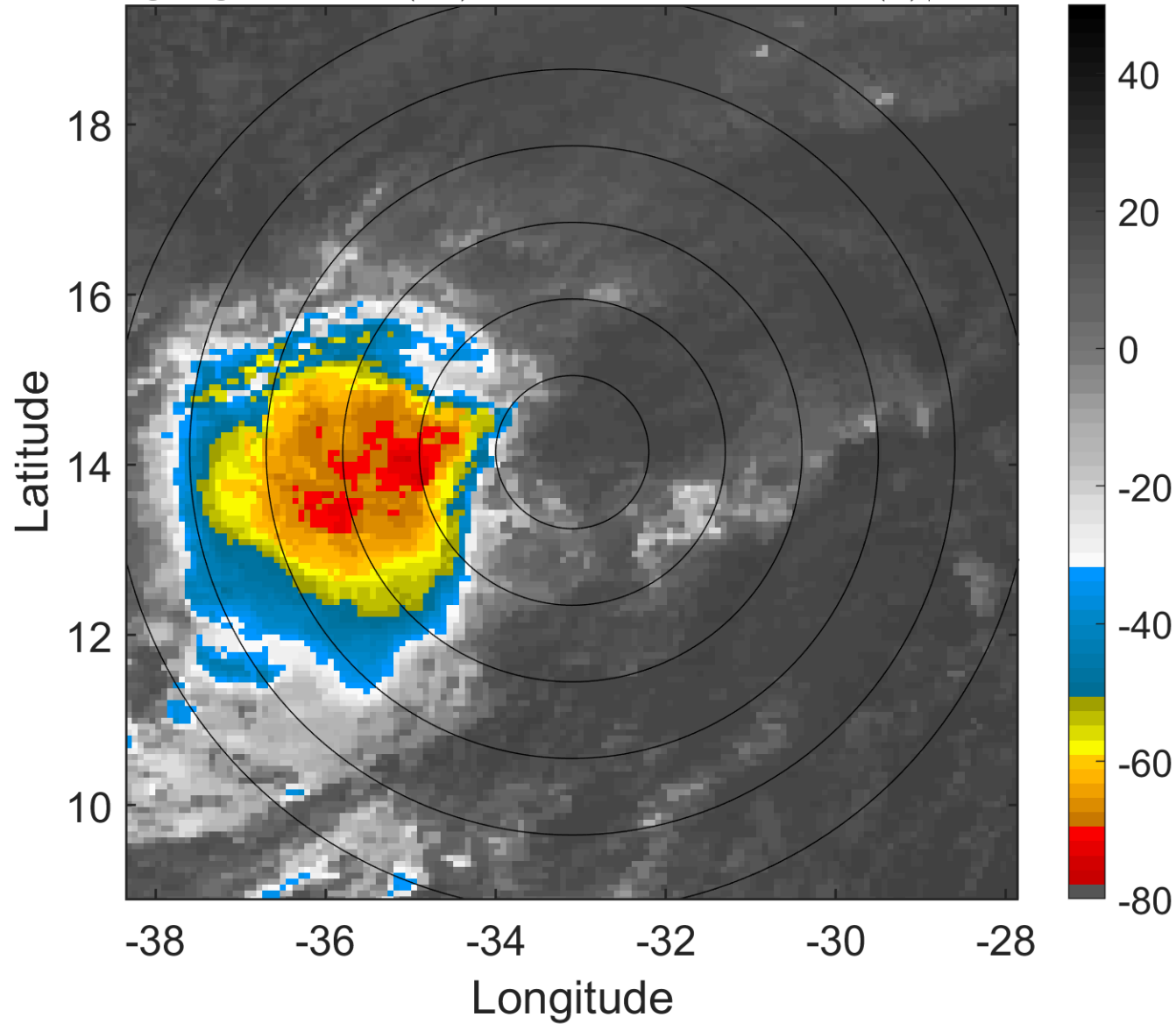
t: 2011082603 (0.8 LT)

Lightning: 0.8 LT \pm 1.5 h (dots)

PT: SLWP | EA: INACT

10L (TEN) | 30 kt TD

S: 9.9 m s⁻¹ (M) | H: 221°



6-h IR BT Differences & Lightning

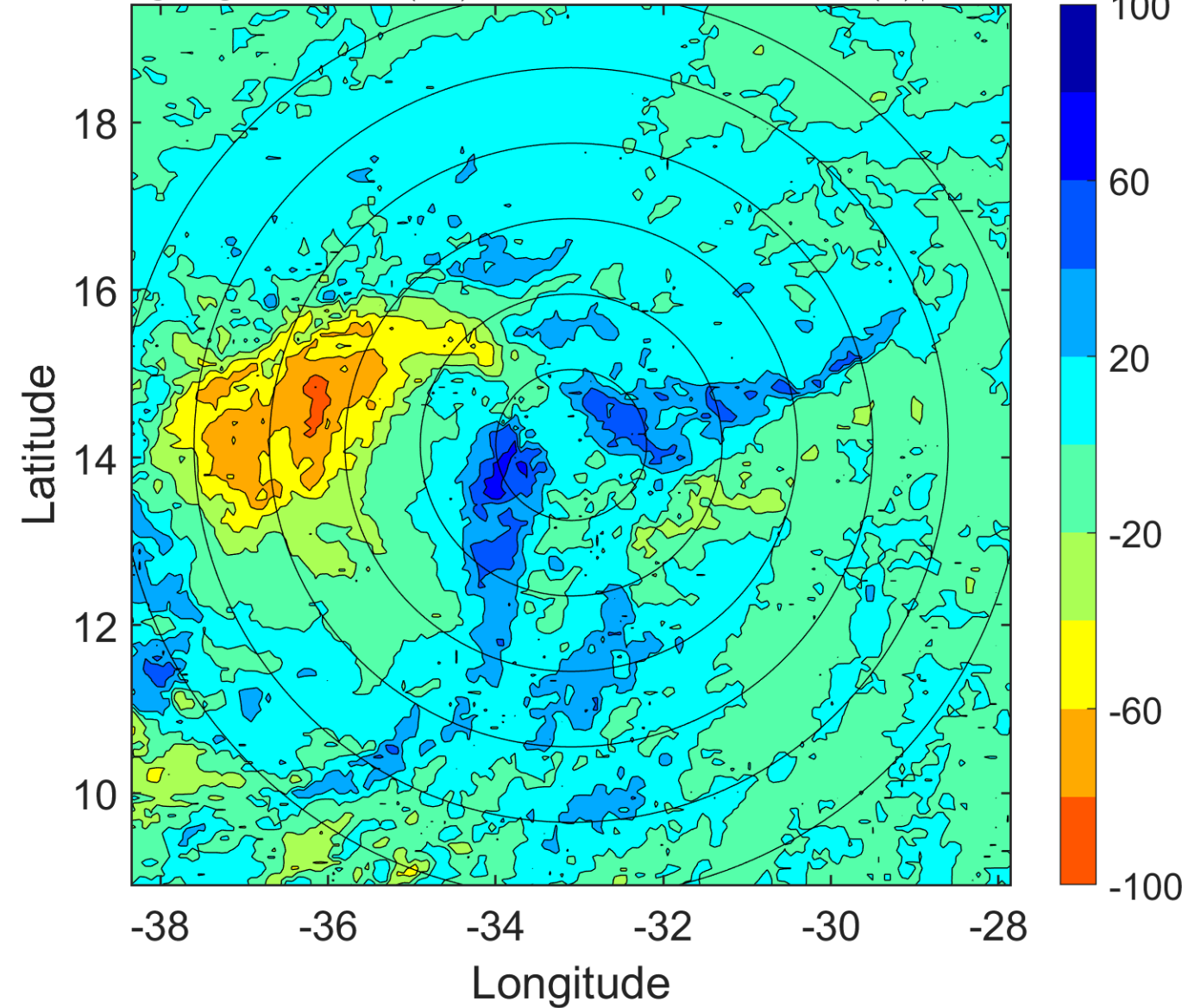
Δ t: 2011082603 (0.8 LT) - 2011082521 (18.8 LT)

Lightning: 0.8 LT \pm 1.5 h (dots)

PT: SLWP | EA: INACT

10L (TEN) | 30 kt TD

S: 9.9 m s⁻¹ (M) | H: 221°



IR BT & Lightning

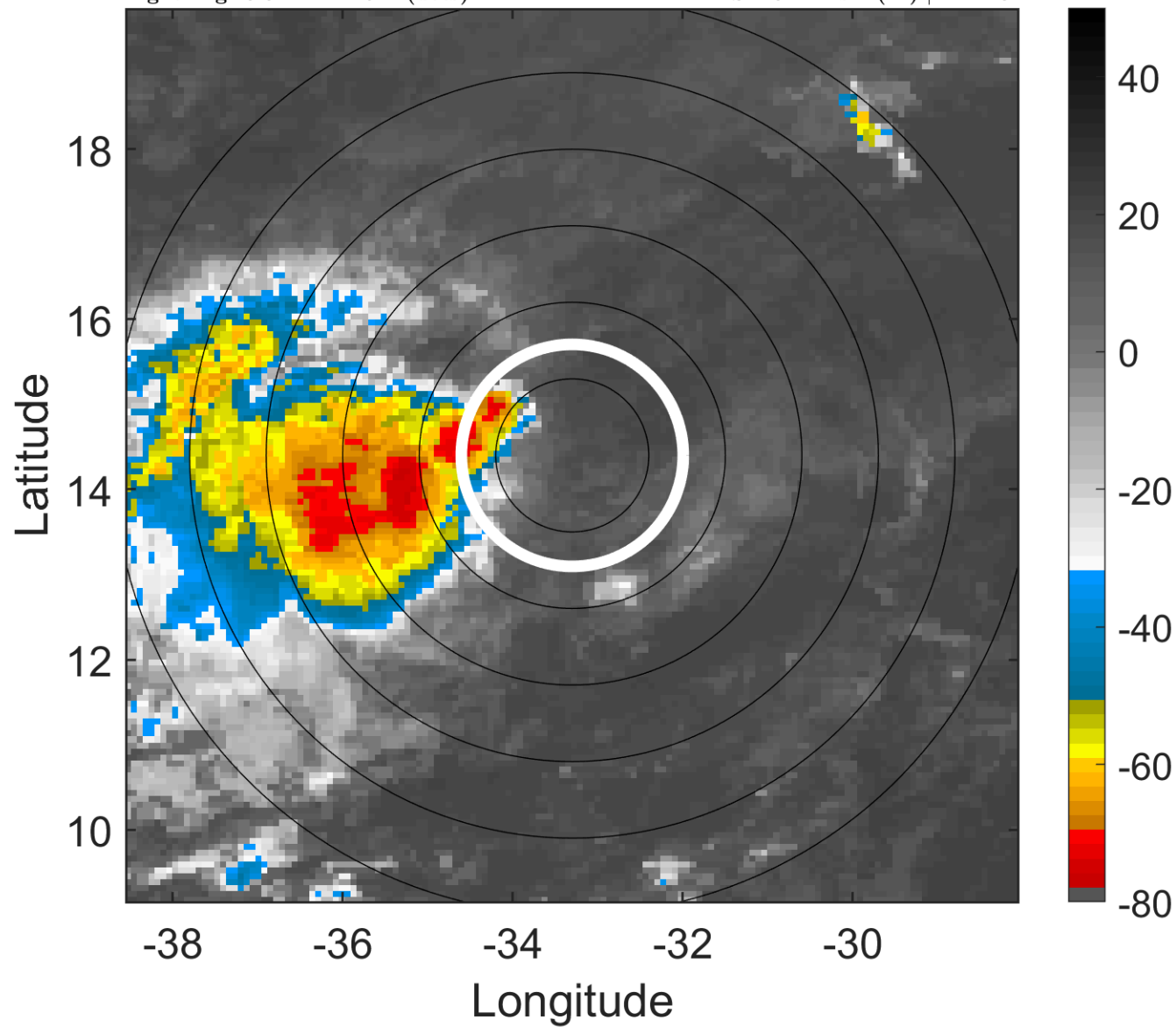
t: 2011082606 (3.8 LT)

Lightning: 3.8 LT \pm 1.5 h (dots)

PT: SLWP | EA: INACT

10L (TEN) | 30 kt TD

S: 10.4 m s⁻¹ (M) | H: 220°



6-h IR BT Differences & Lightning

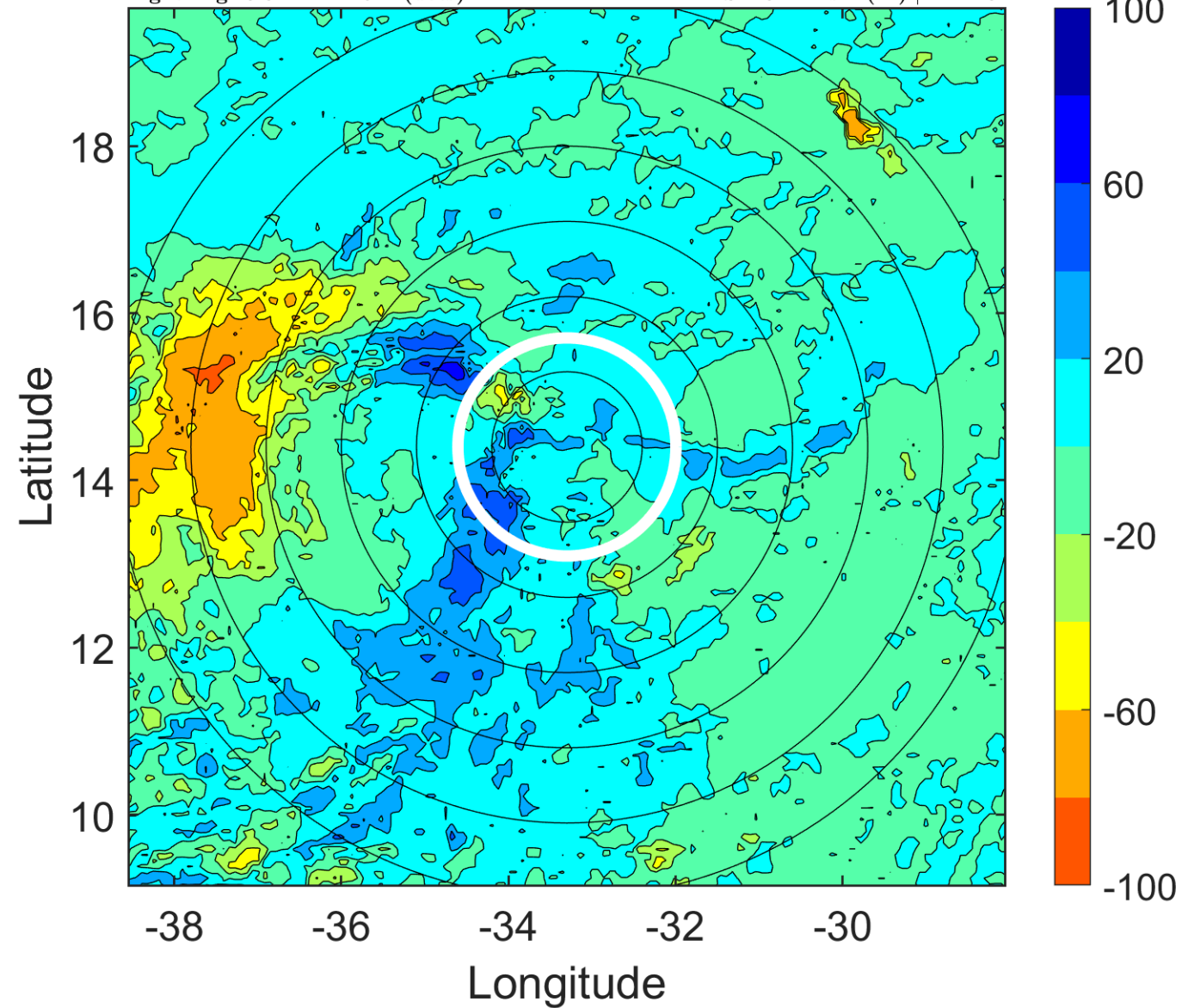
Δ t: 2011082606 (3.8 LT) - 2011082600 (21.8 LT)

Lightning: 3.8 LT \pm 1.5 h (dots)

PT: SLWP | EA: INACT

10L (TEN) | 30 kt TD

S: 10.4 m s⁻¹ (M) | H: 220°



IR BT & Lightning

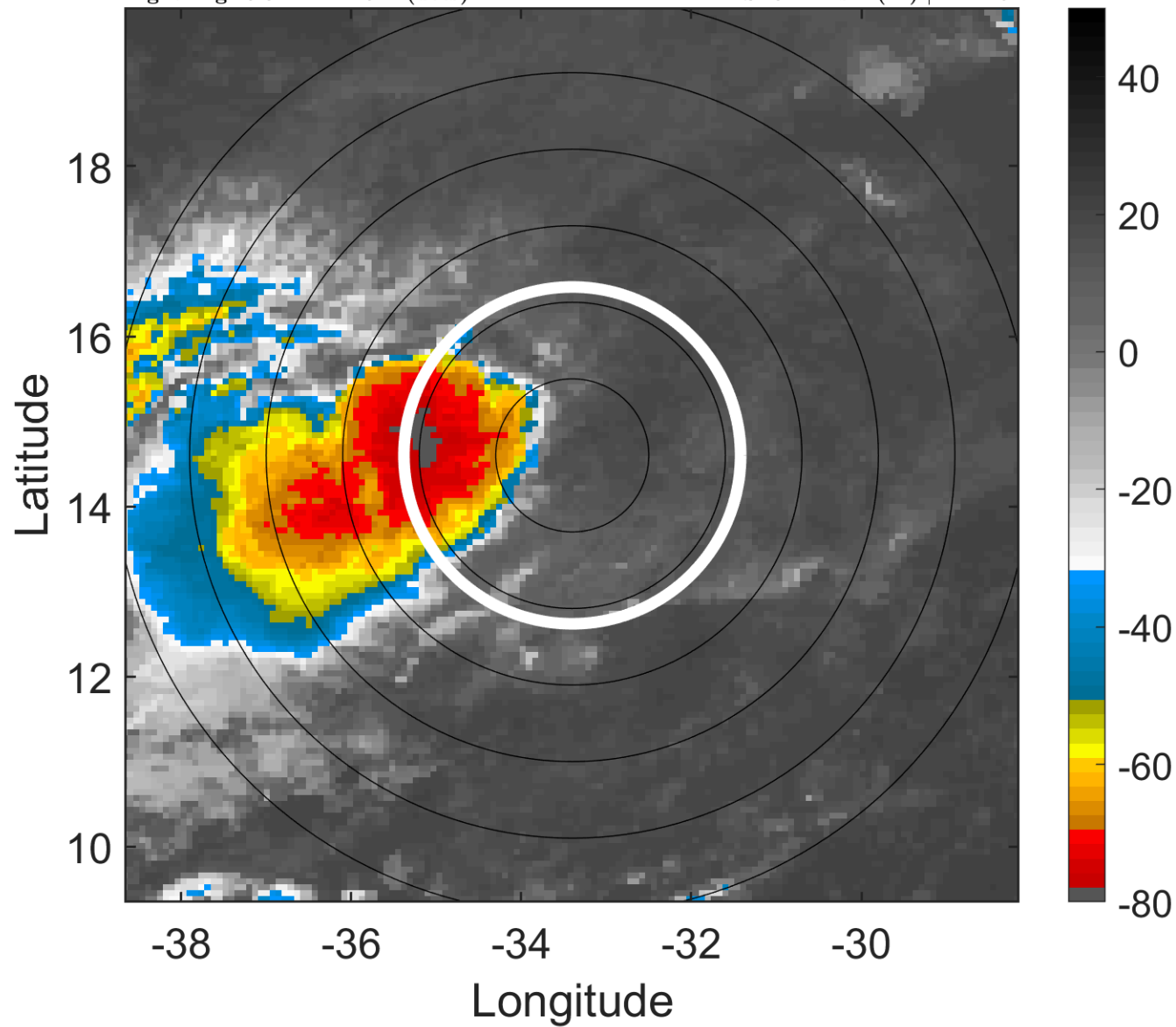
t: 2011082609 (6.8 LT)

Lightning: 6.8 LT \pm 1.5 h (dots)

PT: SLWP | EA: INACT

10L (TEN) | 30 kt TD

S: 8.2 m s⁻¹ (M) | H: 225°



6-h IR BT Differences & Lightning

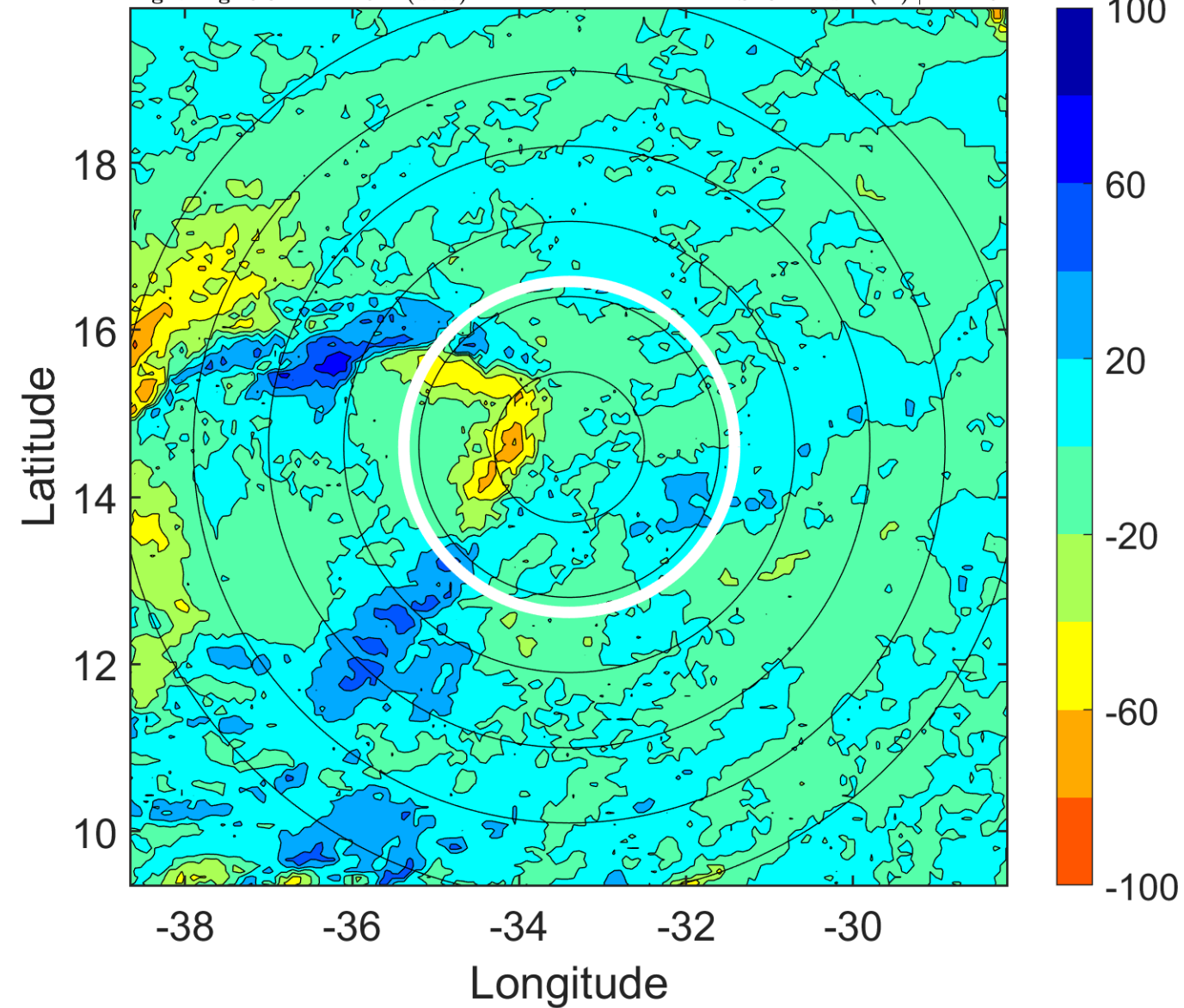
Δ t: 2011082609 (6.8 LT) - 2011082603 (0.8 LT)

Lightning: 6.8 LT \pm 1.5 h (dots)

PT: SLWP | EA: INACT

10L (TEN) | 30 kt TD

S: 8.2 m s⁻¹ (M) | H: 225°



IR BT & Lightning

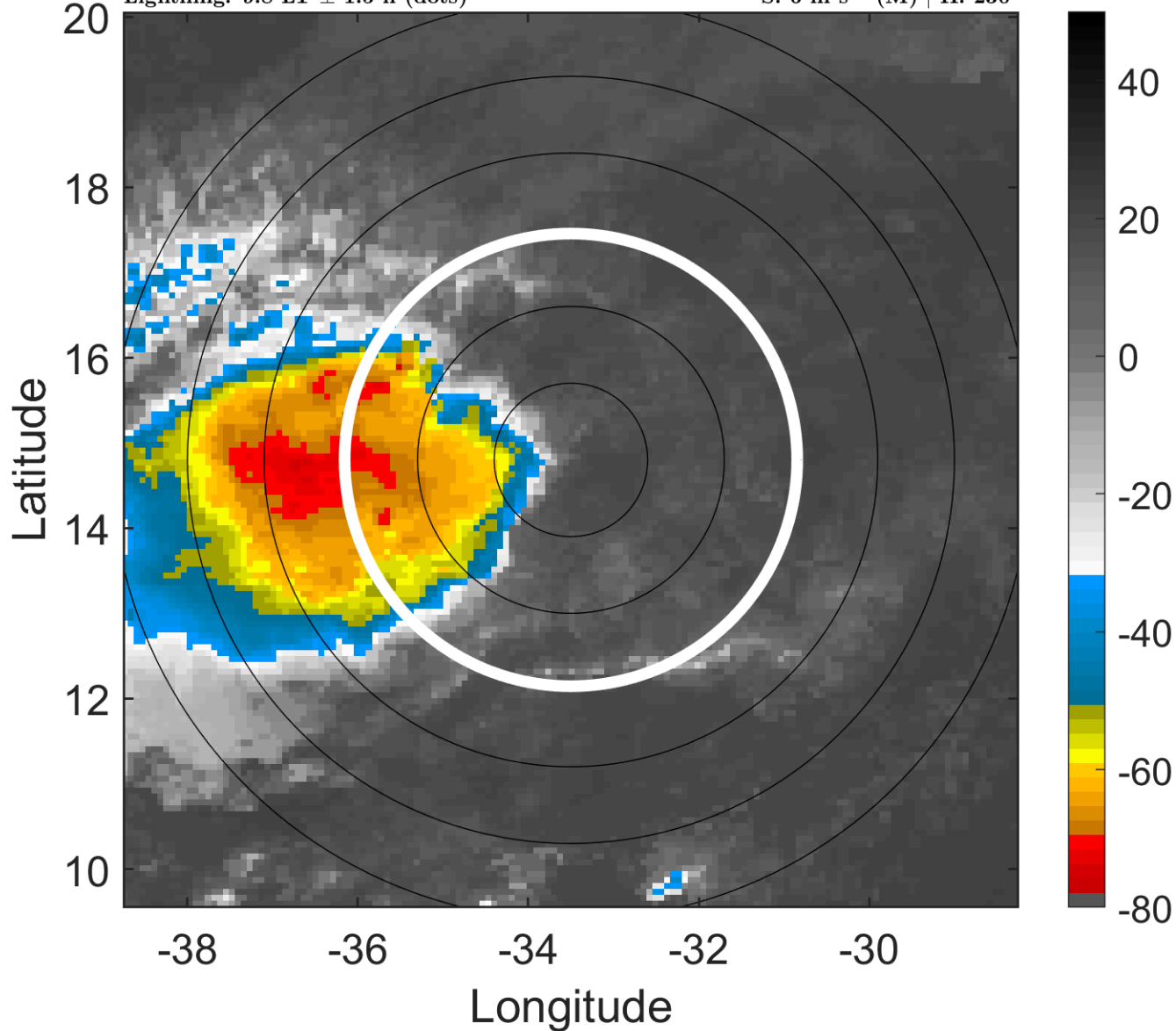
t: 2011082612 (9.8 LT)

Lightning: 9.8 LT \pm 1.5 h (dots)

PT: SLWP | EA: INACT

10L (TEN) | 30 kt TD

S: 6 m s⁻¹ (M) | H: 230°



6-h IR BT Differences & Lightning

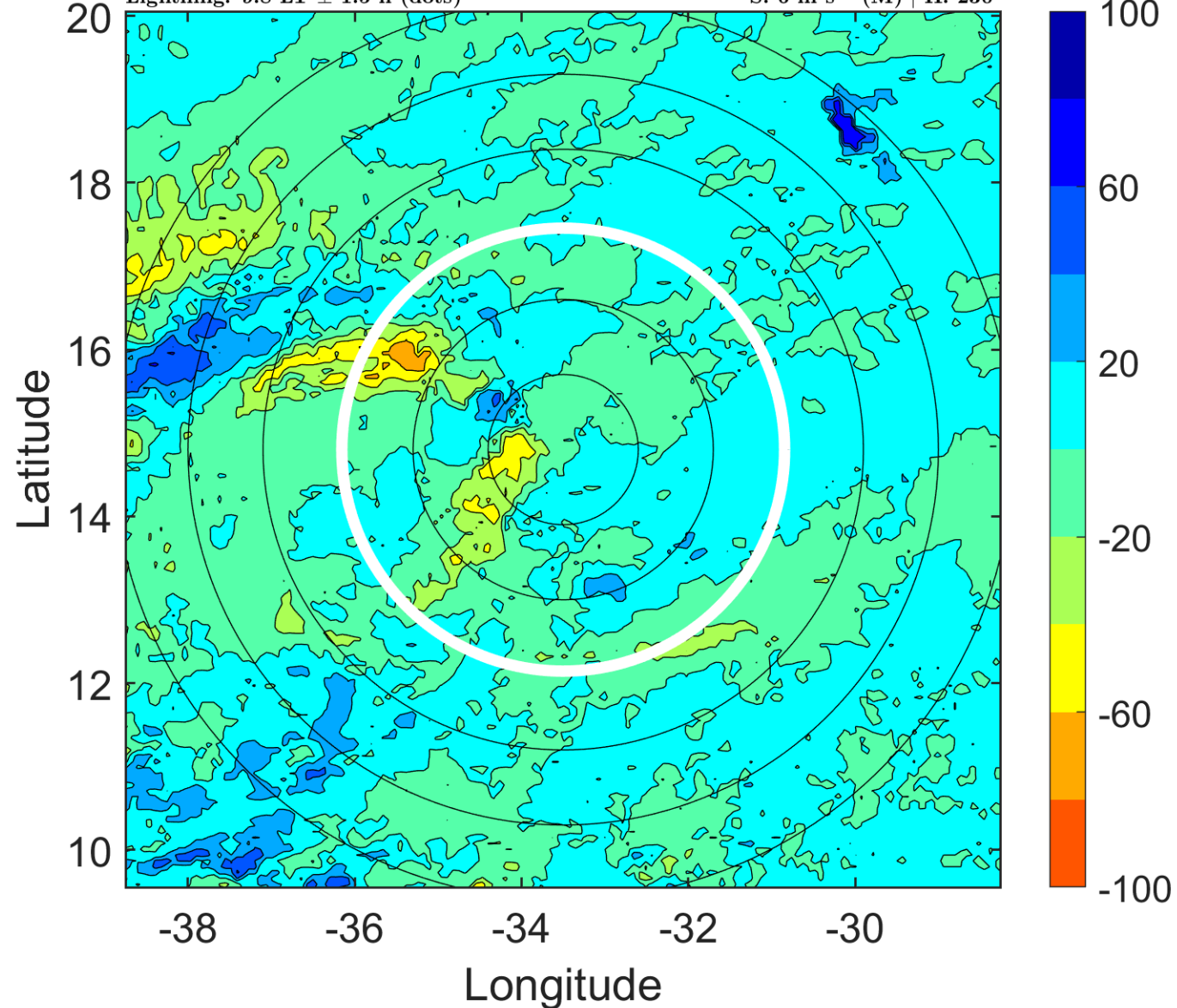
Δ t: 2011082612 (9.8 LT) - 2011082606 (3.8 LT)

Lightning: 9.8 LT \pm 1.5 h (dots)

PT: SLWP | EA: INACT

10L (TEN) | 30 kt TD

S: 6 m s⁻¹ (M) | H: 230°



IR BT & Lightning

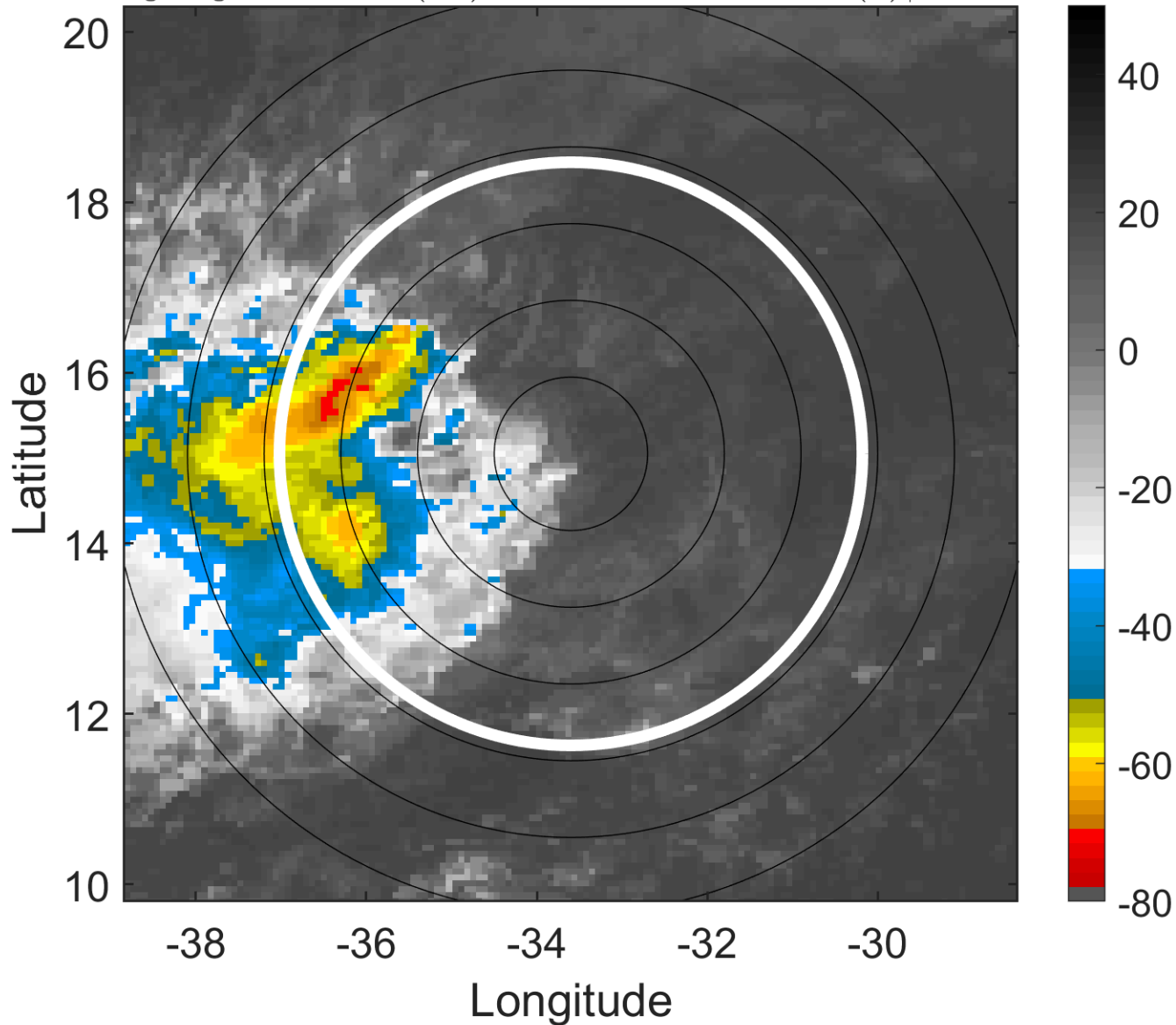
t: 2011082615 (12.8 LT)

Lightning: 12.8 LT \pm 1.5 h (dots)

PT: SLWP | EA: INACT

10L (TEN) | 30 kt TD

S: 5.7 m s⁻¹ (M) | H: 225.5°



6-h IR BT Differences & Lightning

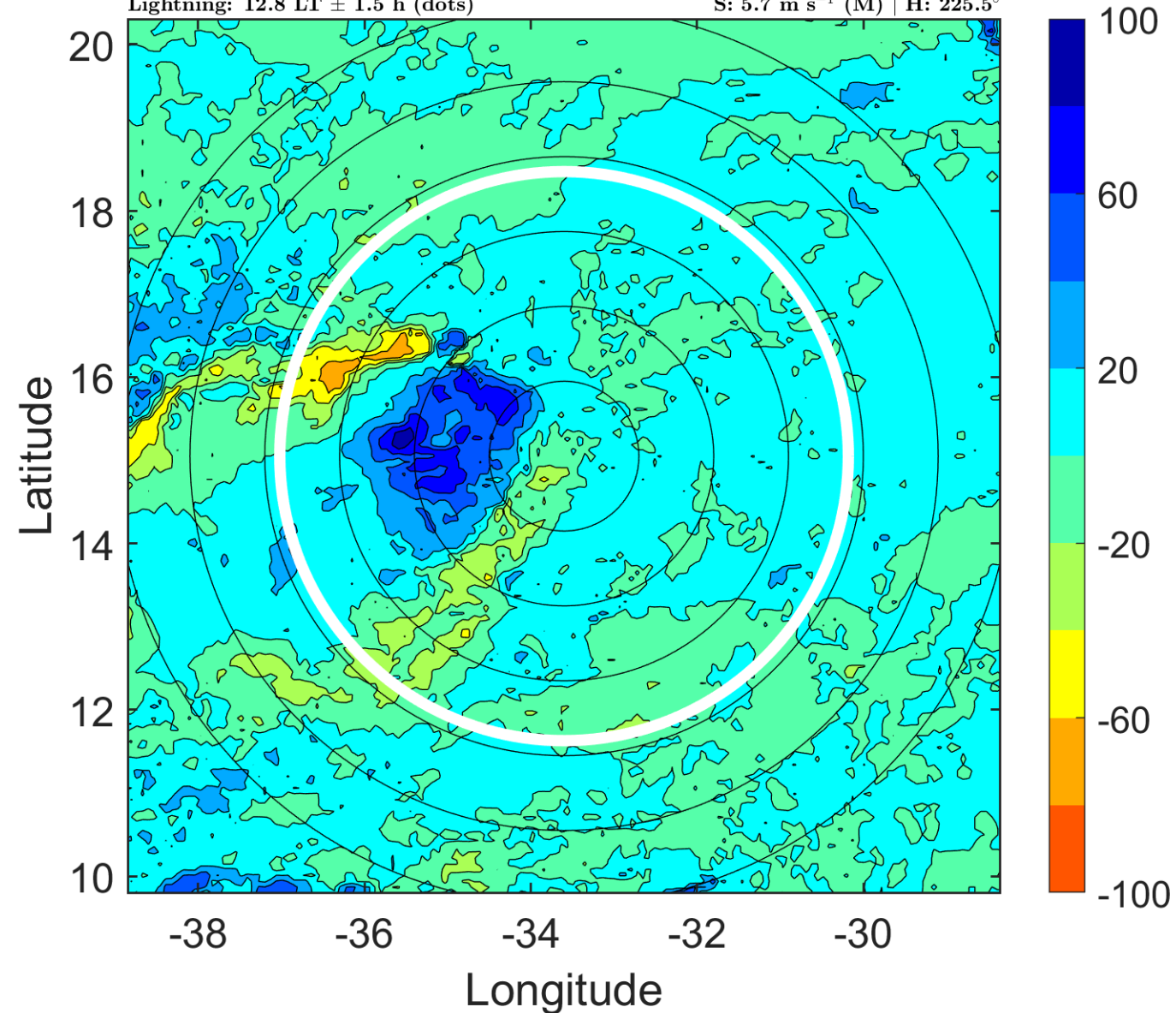
Δ t: 2011082615 (12.8 LT) - 2011082609 (6.8 LT)

Lightning: 12.8 LT \pm 1.5 h (dots)

PT: SLWP | EA: INACT

10L (TEN) | 30 kt TD

S: 5.7 m s⁻¹ (M) | H: 225.5°



IR BT & Lightning

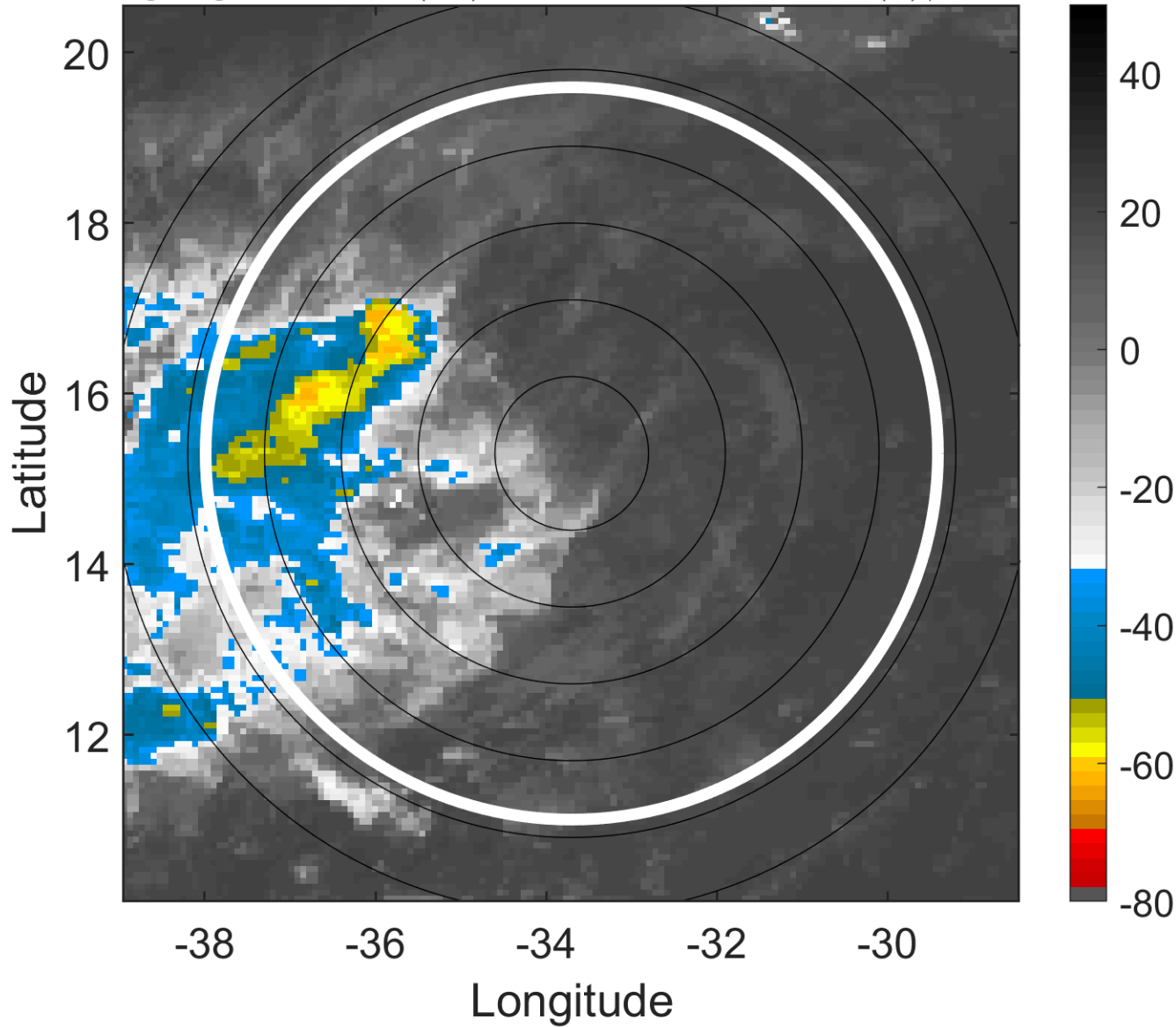
t: 2011082618 (15.8 LT)

Lightning: 15.8 LT \pm 1.5 h (dots)

PT: SLWP | EA: INACT

10L (TEN) | 30 kt TD

S: 5.3 m s⁻¹ (M) | H: 221°



6-h IR BT Differences & Lightning

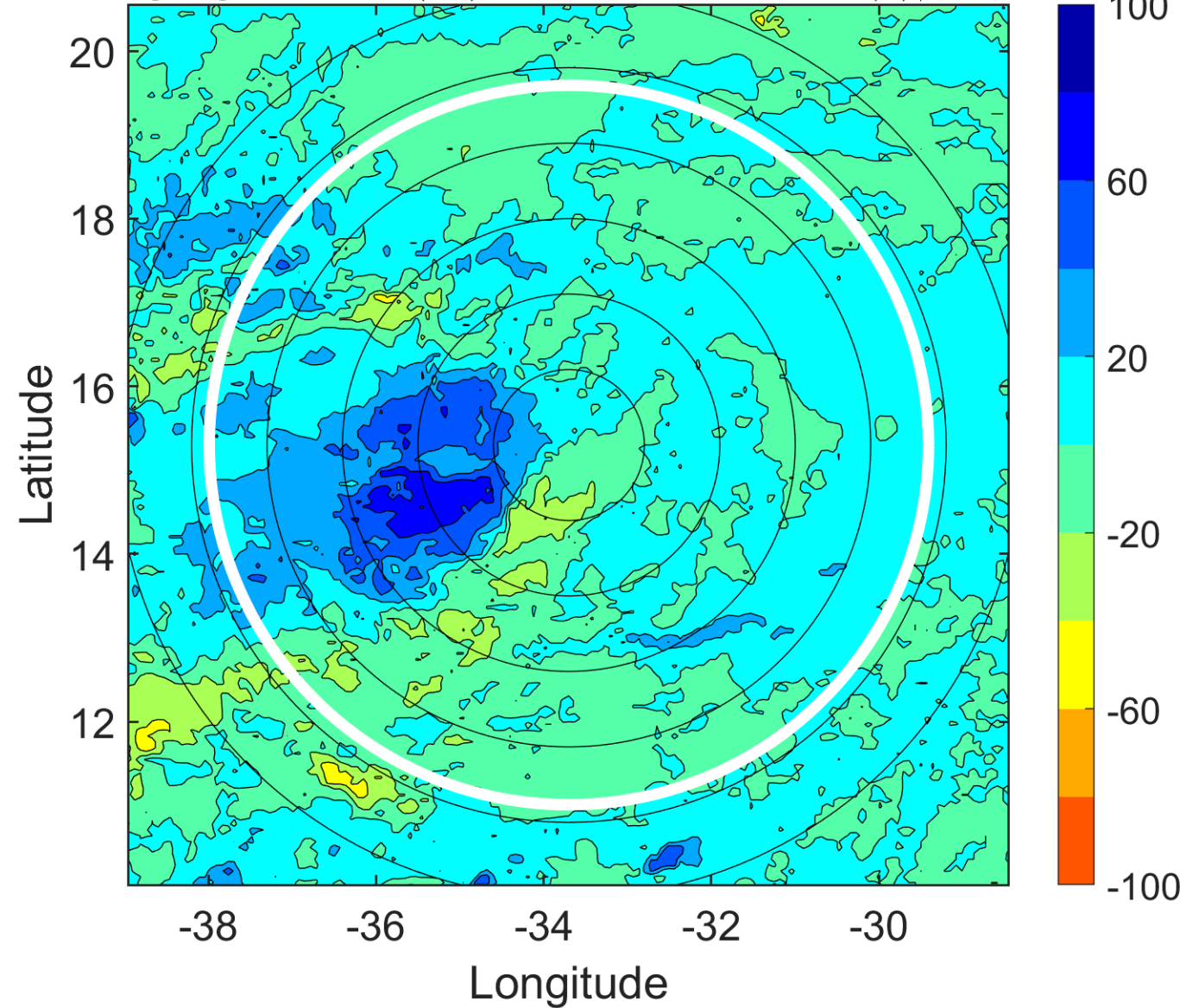
Δ t: 2011082618 (15.8 LT) - 2011082612 (9.8 LT)

Lightning: 15.8 LT \pm 1.5 h (dots)

PT: SLWP | EA: INACT

10L (TEN) | 30 kt TD

S: 5.3 m s⁻¹ (M) | H: 221°



IR BT & Lightning

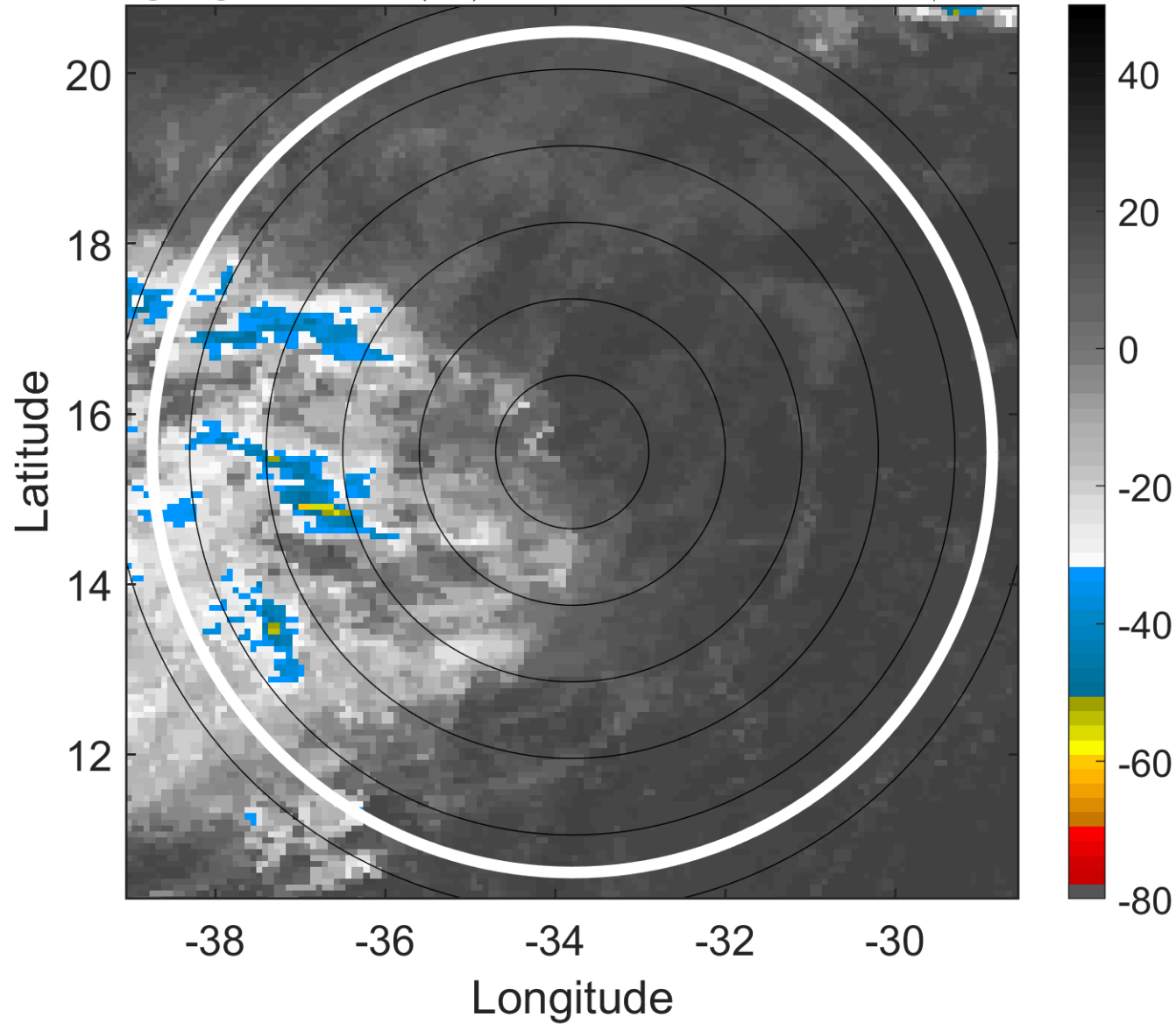
t: 2011082621 (18.7 LT)

Lightning: 18.7 LT \pm 1.5 h (dots)

PT: SLWP | EA: INACT

10L (TEN) | 27.5 kt TD

S: null | H: null



6-h IR BT Differences & Lightning

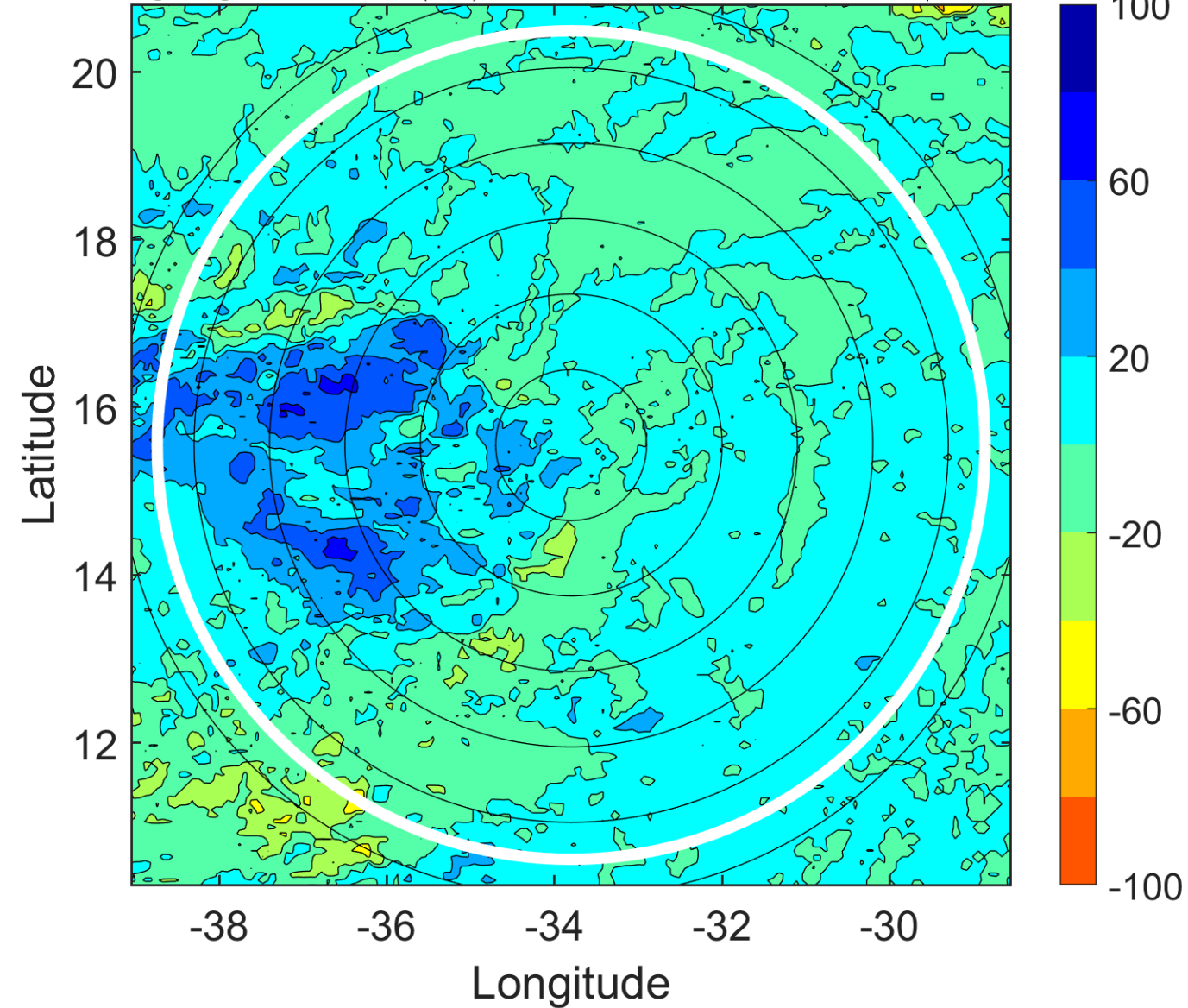
Δ t: 2011082621 (18.7 LT) - 2011082615 (12.8 LT)

Lightning: 18.7 LT \pm 1.5 h (dots)

PT: SLWP | EA: INACT

10L (TEN) | 27.5 kt TD

S: null | H: null



IR BT & Lightning

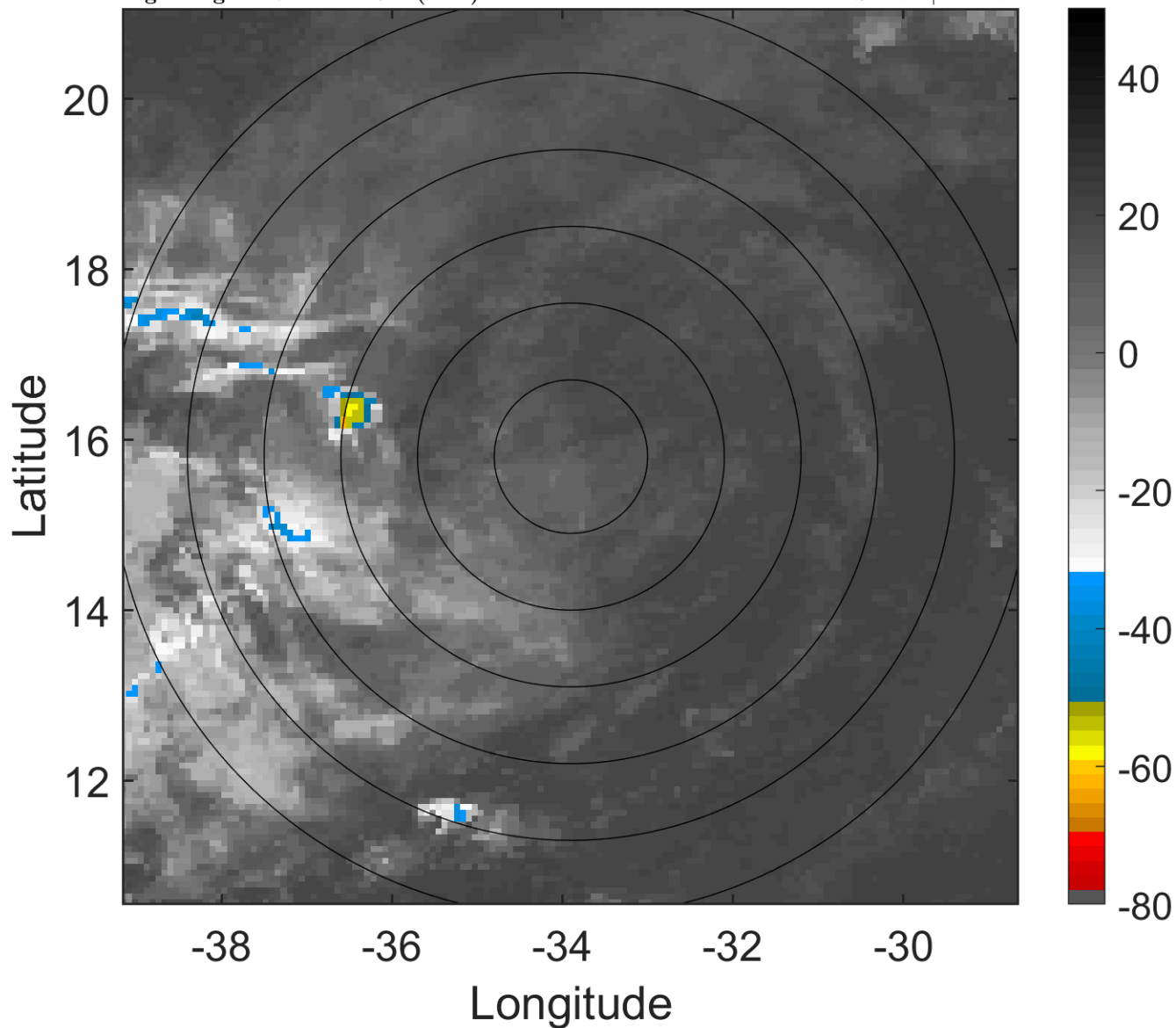
t: 2011082700 (21.7 LT)

Lightning: 21.7 LT \pm 1.5 h (dots)

PT: SLWP | EA: INACT

10L (TEN) | 25 kt LO

S: null | H: null



6-h IR BT Differences & Lightning

Δ t: 2011082700 (21.7 LT) - 2011082618 (15.8 LT)

Lightning: 21.7 LT \pm 1.5 h (dots)

PT: SLWP | EA: INACT

10L (TEN) | 25 kt LO

S: null | H: null

