

### IR BT & Lightning

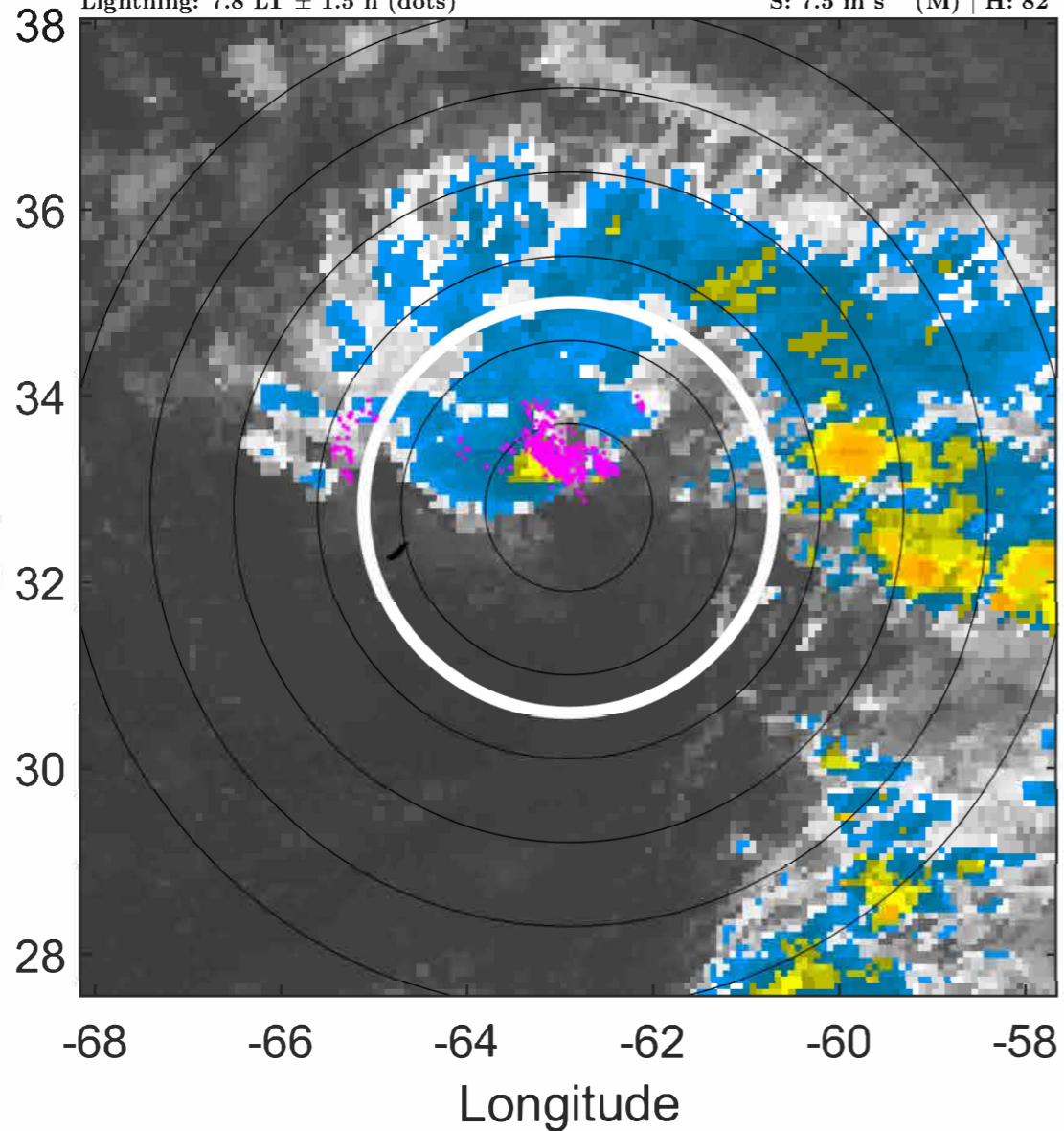
t: 2021092412 (7.8 LT)

Lightning: 7.8 LT  $\pm$  1.5 h (dots)

PT: SLWP | EA: INACT

19L (TERESA) | 35 kt SS

S: 7.5 m s<sup>-1</sup> (M) | H: 82°



### 6-h IR BT Differences & Lightning

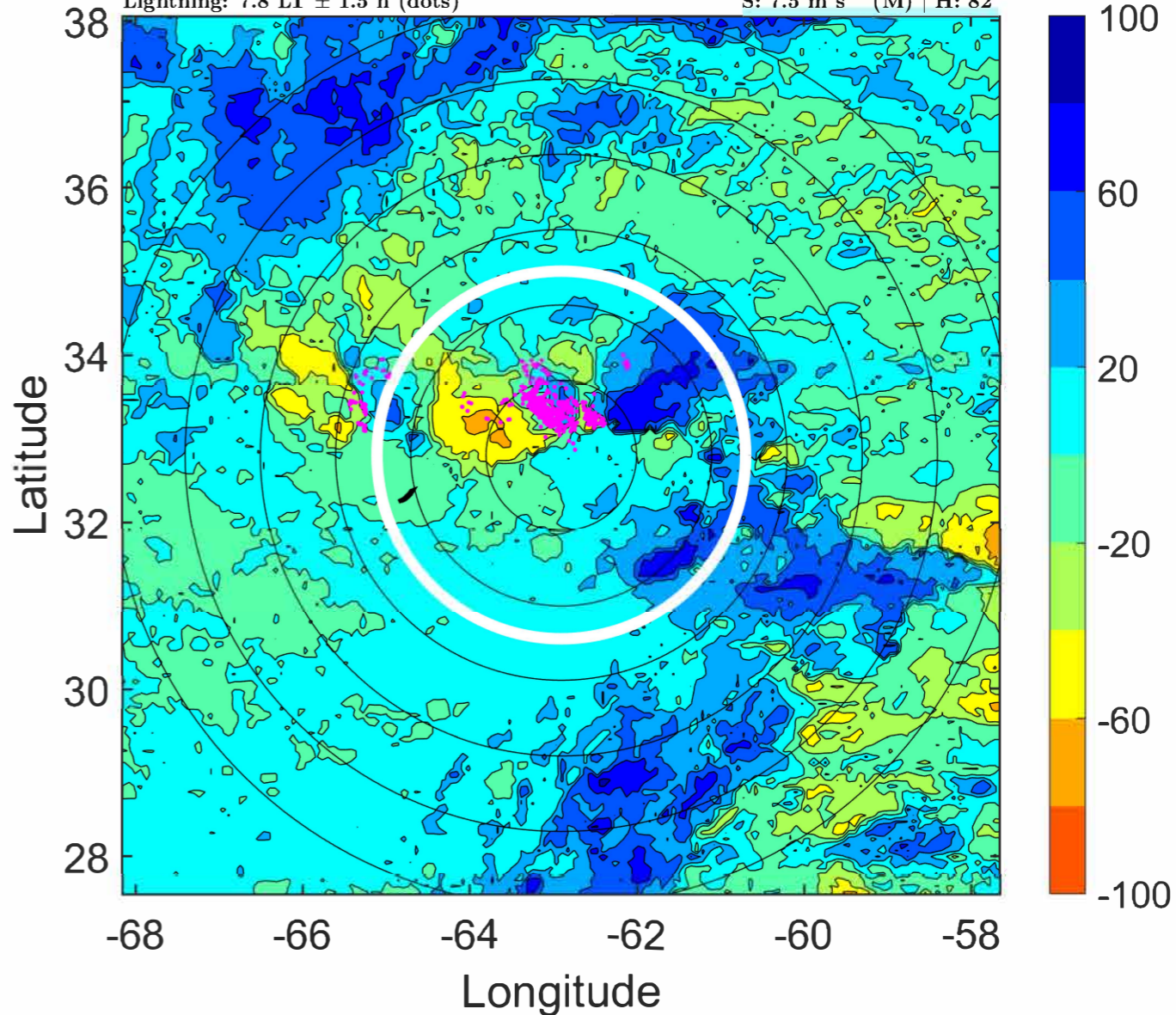
$\Delta$ t: 2021092412 (7.8 LT) - 2021092406 (1.9 LT)

Lightning: 7.8 LT  $\pm$  1.5 h (dots)

PT: SLWP | EA: INACT

19L (TERESA) | 35 kt SS

S: 7.5 m s<sup>-1</sup> (M) | H: 82°



### IR BT & Lightning

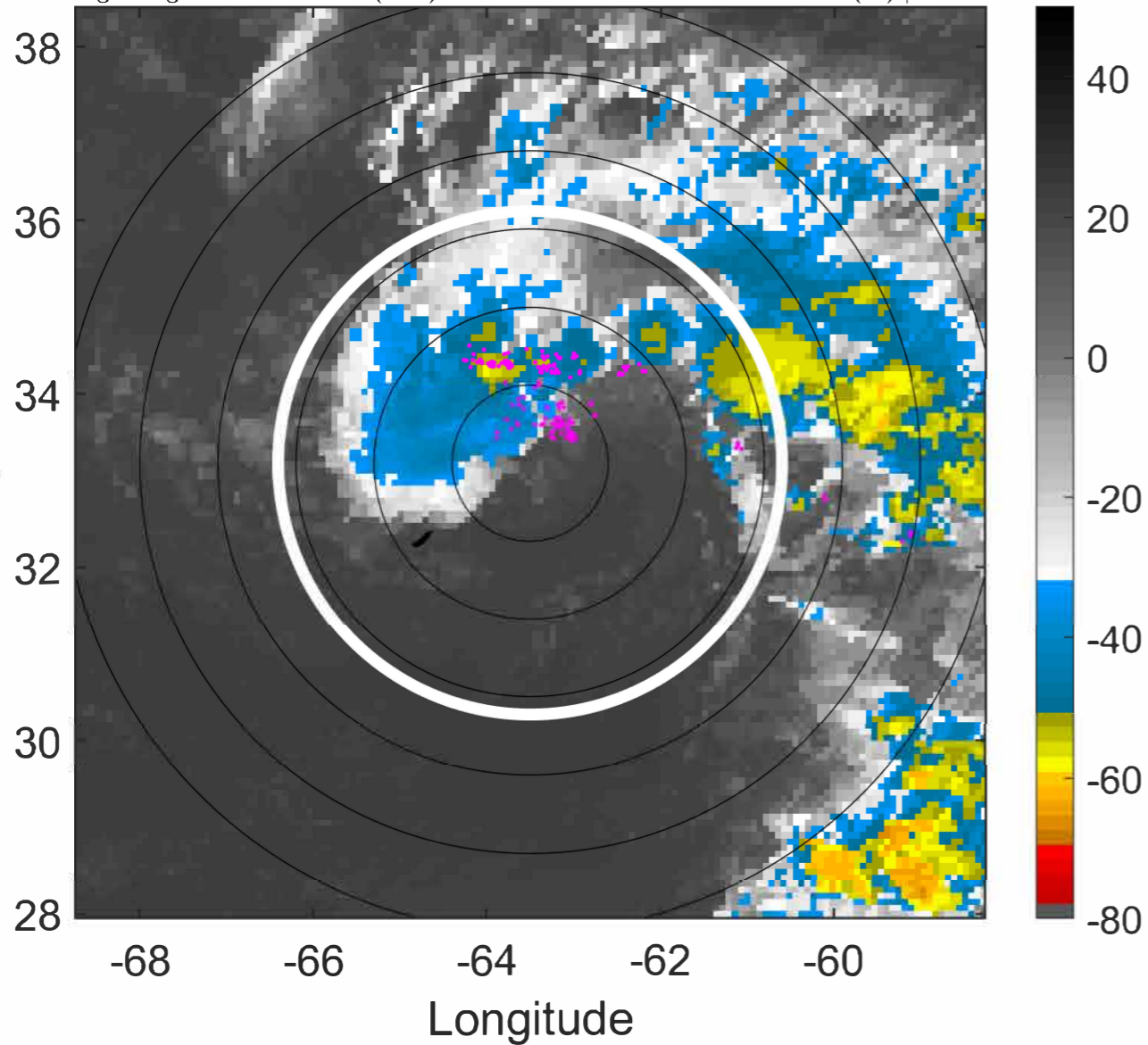
t: 2021092415 (10.8 LT)

Lightning: 10.8 LT  $\pm$  1.5 h (dots)

PT: SLWP | EA: INACT

19L (TERESA) | 37.5 kt SS

S: 6.8 m s<sup>-1</sup> (M) | H: 86°



### 6-h IR BT Differences & Lightning

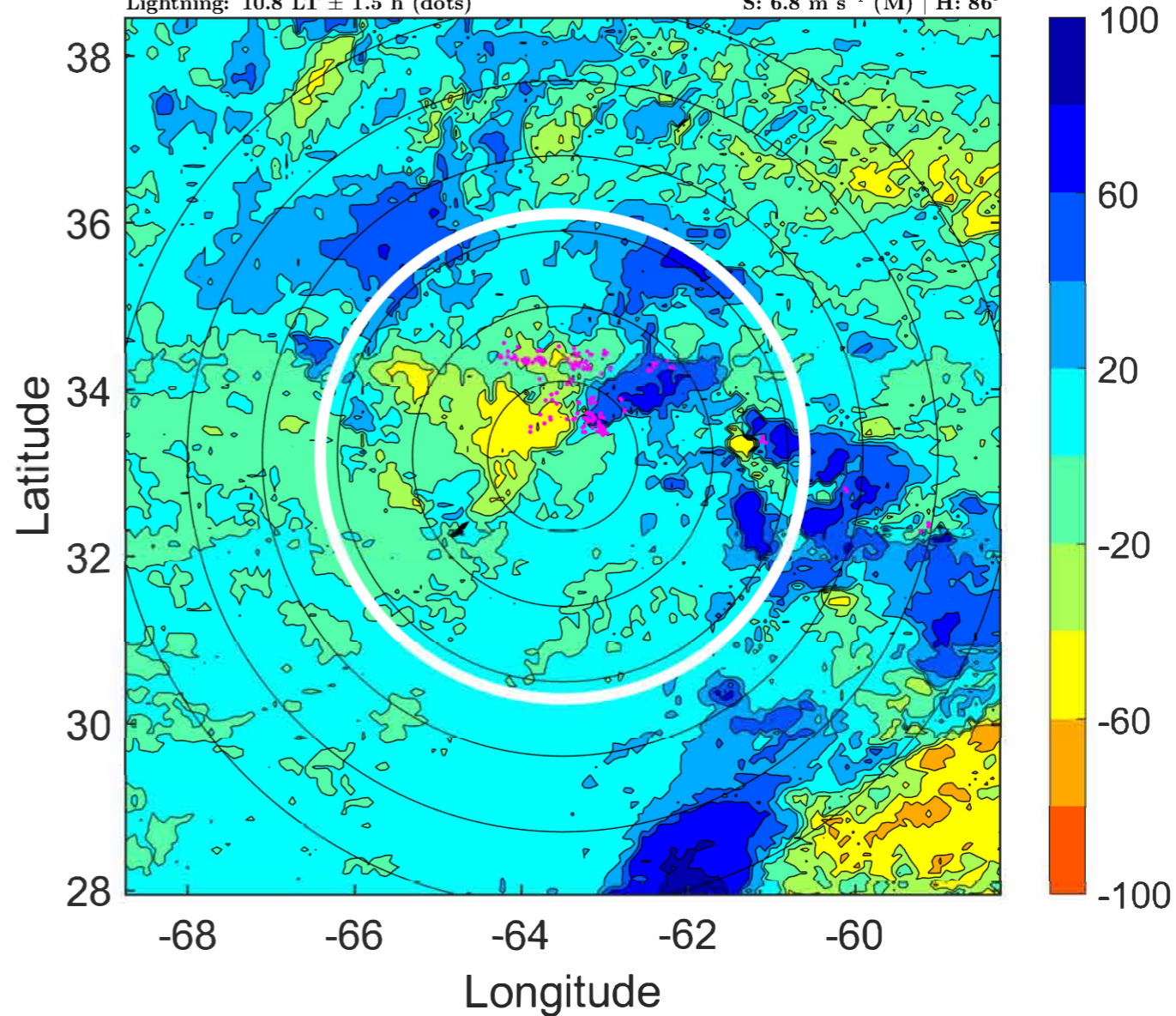
$\Delta$ t: 2021092415 (10.8 LT) - 2021092409 (4.8 LT)

Lightning: 10.8 LT  $\pm$  1.5 h (dots)

PT: SLWP | EA: INACT

19L (TERESA) | 37.5 kt SS

S: 6.8 m s<sup>-1</sup> (M) | H: 86°



### IR BT & Lightning

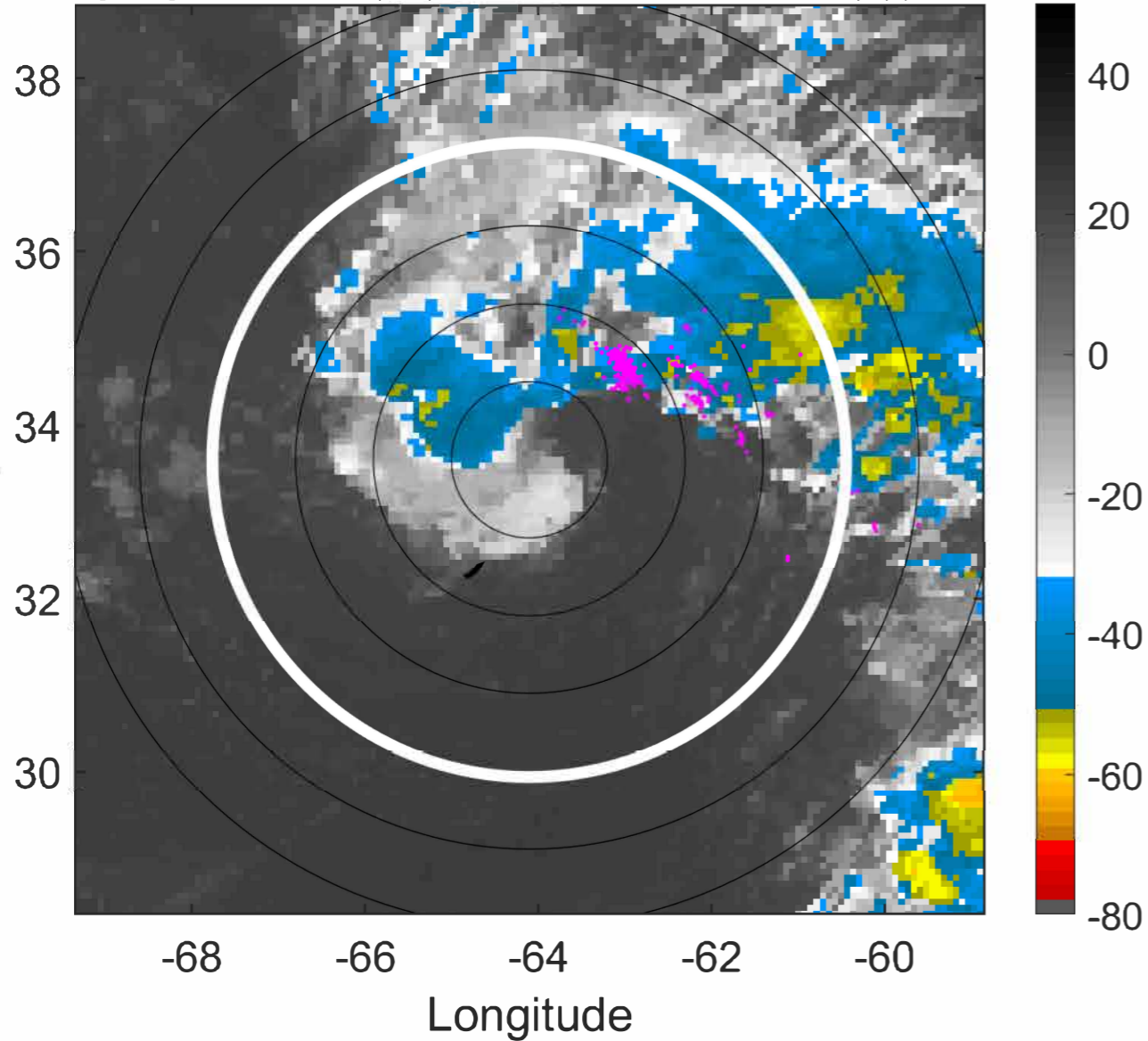
t: 2021092418 (13.7 LT)

Lightning: 13.7 LT  $\pm$  1.5 h (dots)

PT: SLWP | EA: INACT

19L (TERESA) | 40 kt SS

S: 6.2 m s<sup>-1</sup> (M) | H: 90°



### 6-h IR BT Differences & Lightning

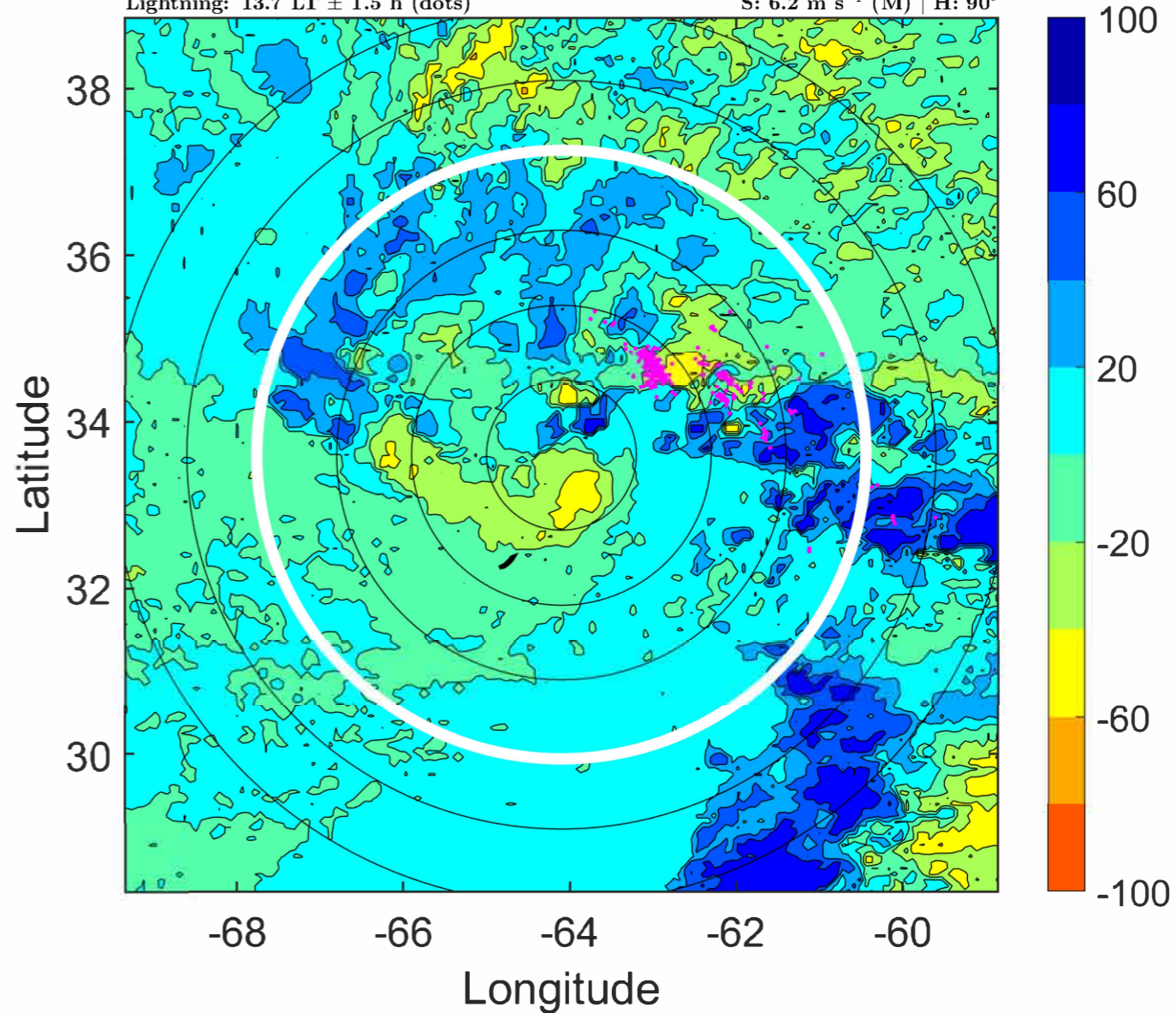
$\Delta$ t: 2021092418 (13.7 LT) - 2021092412 (7.8 LT)

Lightning: 13.7 LT  $\pm$  1.5 h (dots)

PT: SLWP | EA: INACT

19L (TERESA) | 40 kt SS

S: 6.2 m s<sup>-1</sup> (M) | H: 90°



### IR BT & Lightning

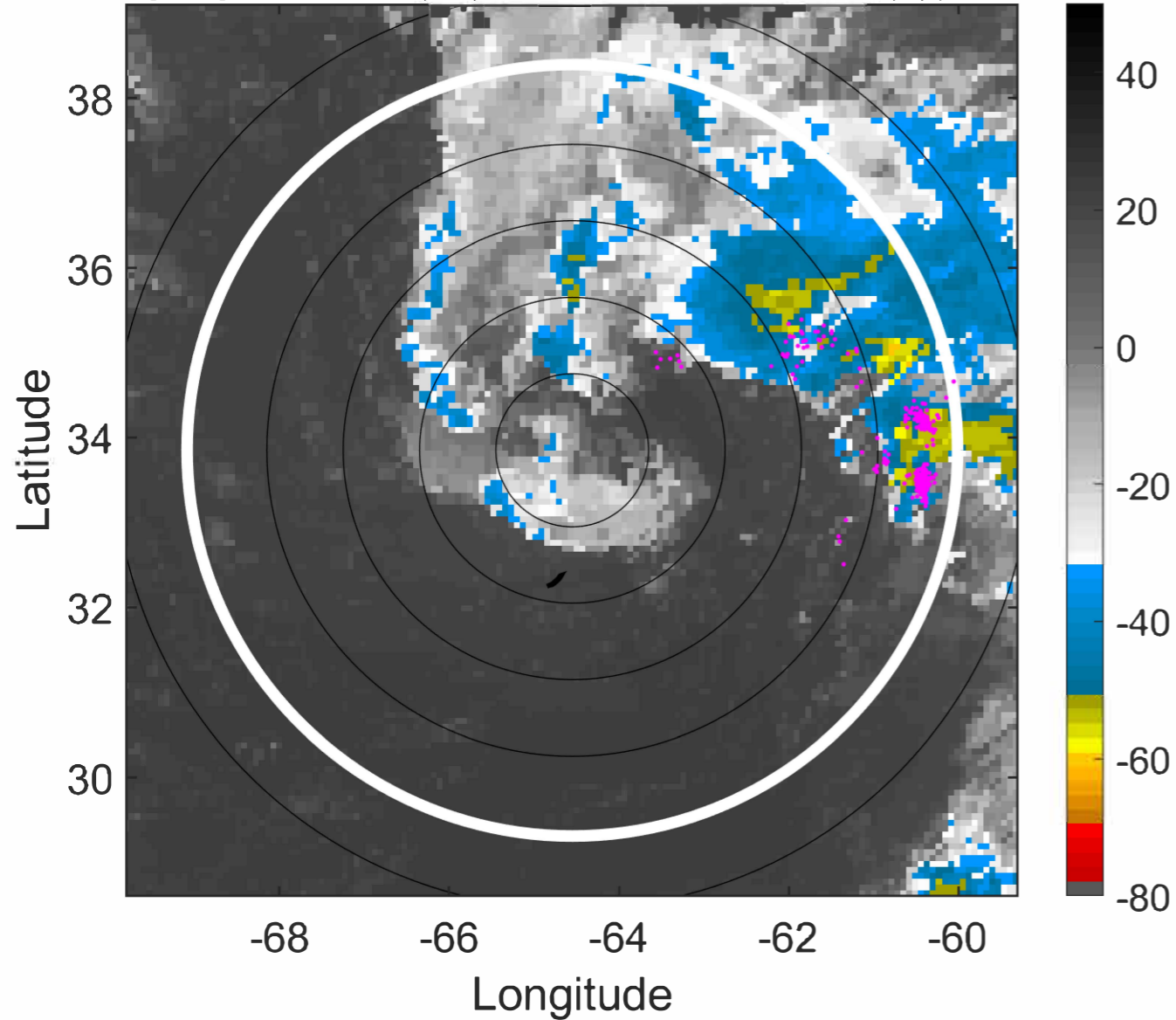
t: 2021092421 (16.7 LT)

Lightning: 16.7 LT  $\pm$  1.5 h (dots)

PT: SLWP | EA: INACT

19L (TERESA) | 40 kt SS

S: 6.8 m s<sup>-1</sup> (M) | H: 92°



### 6-h IR BT Differences & Lightning

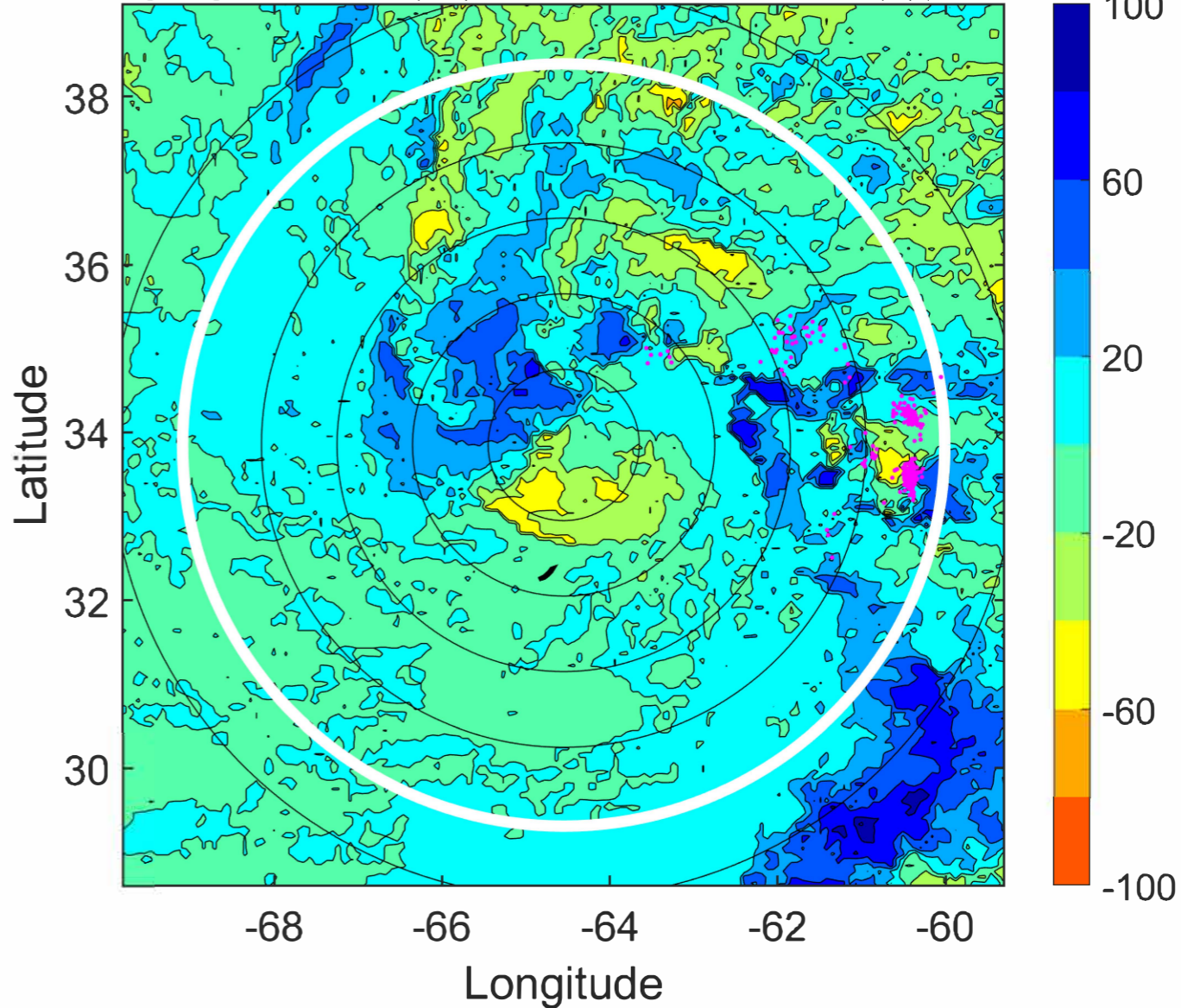
$\Delta$ t: 2021092421 (16.7 LT) - 2021092415 (10.8 LT)

Lightning: 16.7 LT  $\pm$  1.5 h (dots)

PT: SLWP | EA: INACT

19L (TERESA) | 40 kt SS

S: 6.8 m s<sup>-1</sup> (M) | H: 92°



### IR BT & Lightning

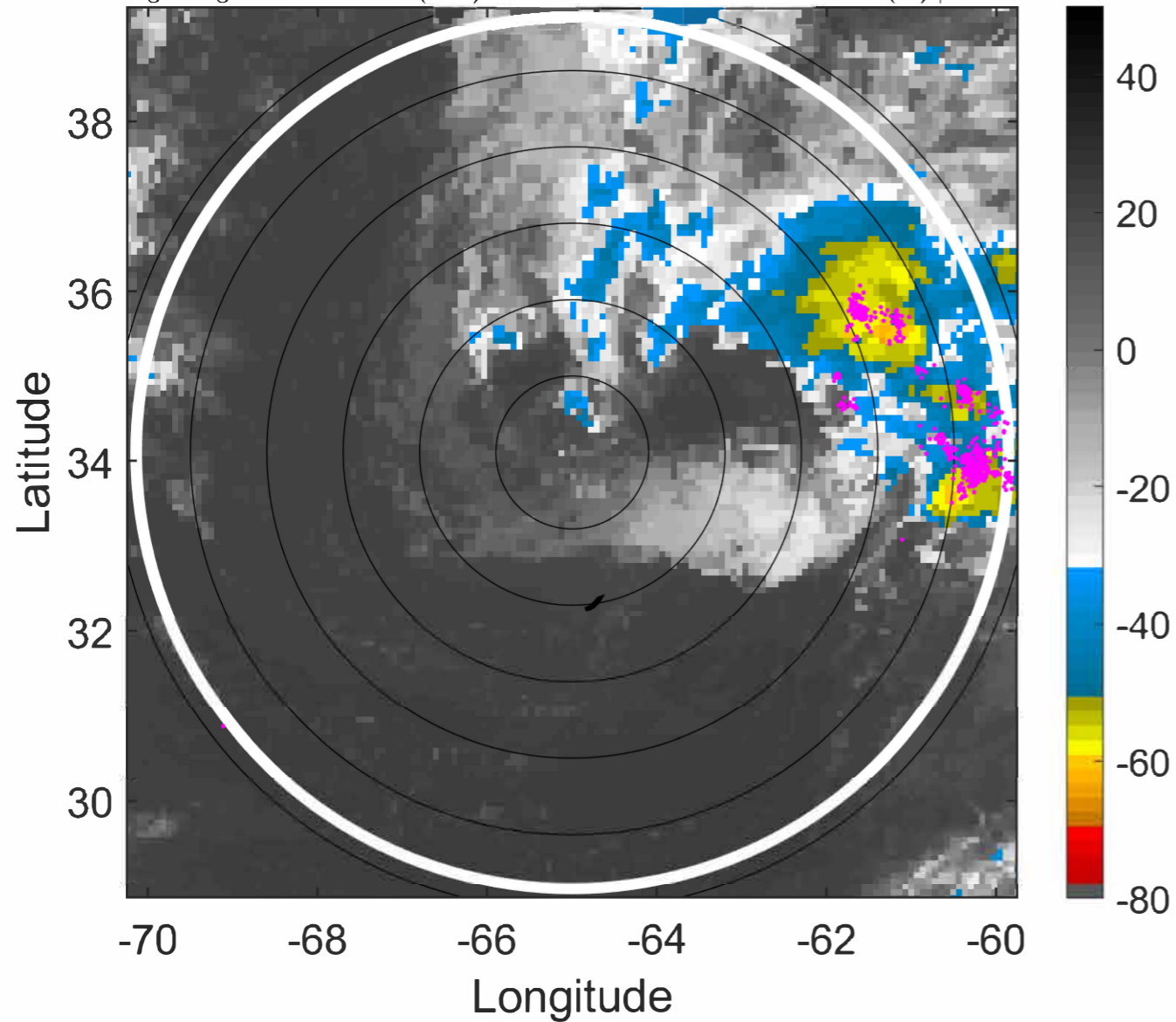
t: 2021092500 (19.7 LT)

Lightning: 19.7 LT  $\pm$  1.5 h (dots)

PT: SLWP | EA: INACT

19L (TERESA) | 40 kt SS

S: 7.5 m s<sup>-1</sup> (M) | H: 94°



### 6-h IR BT Differences & Lightning

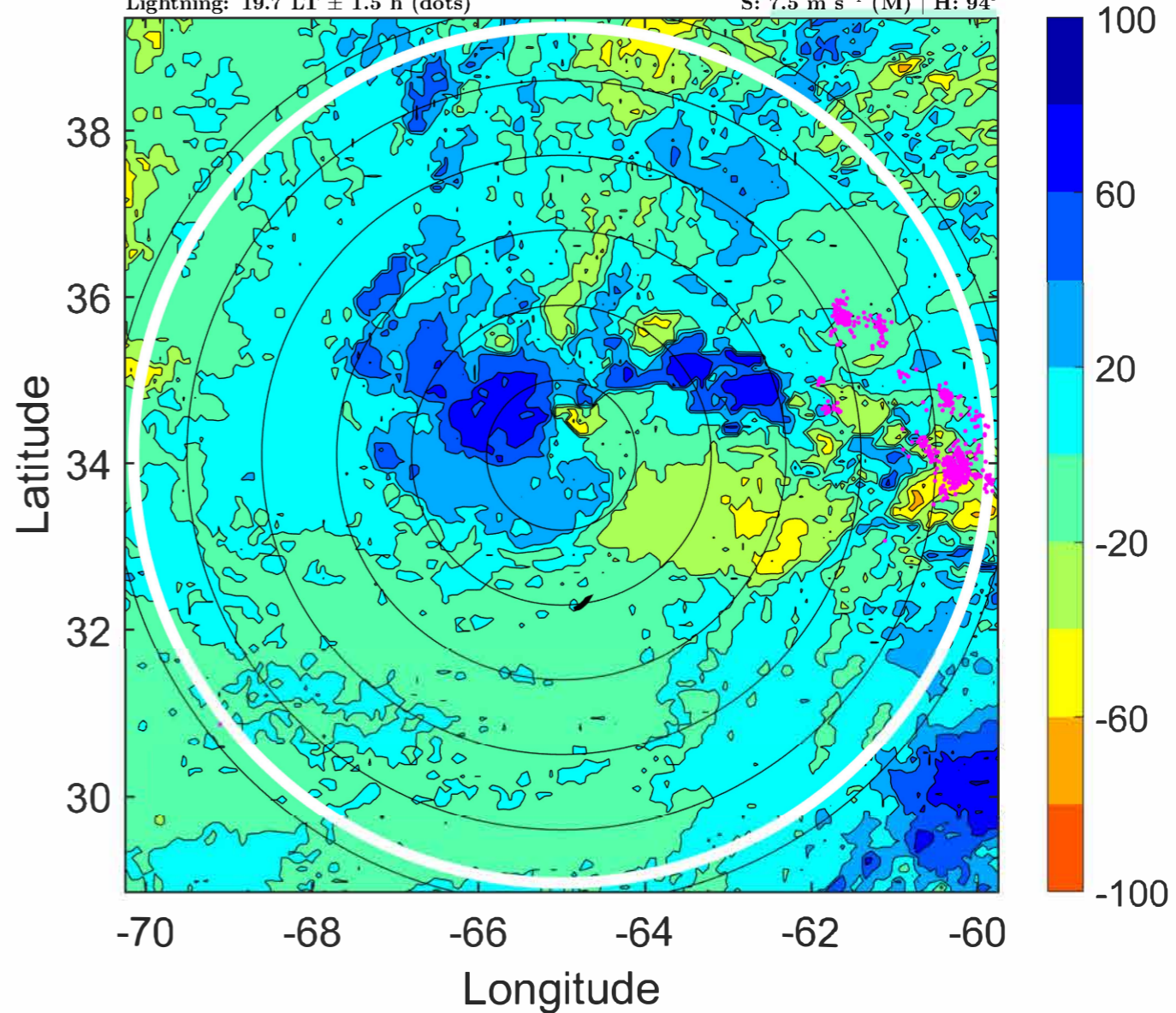
$\Delta$ t: 2021092500 (19.7 LT) - 2021092418 (13.7 LT)

Lightning: 19.7 LT  $\pm$  1.5 h (dots)

PT: SLWP | EA: INACT

19L (TERESA) | 40 kt SS

S: 7.5 m s<sup>-1</sup> (M) | H: 94°



### IR BT & Lightning

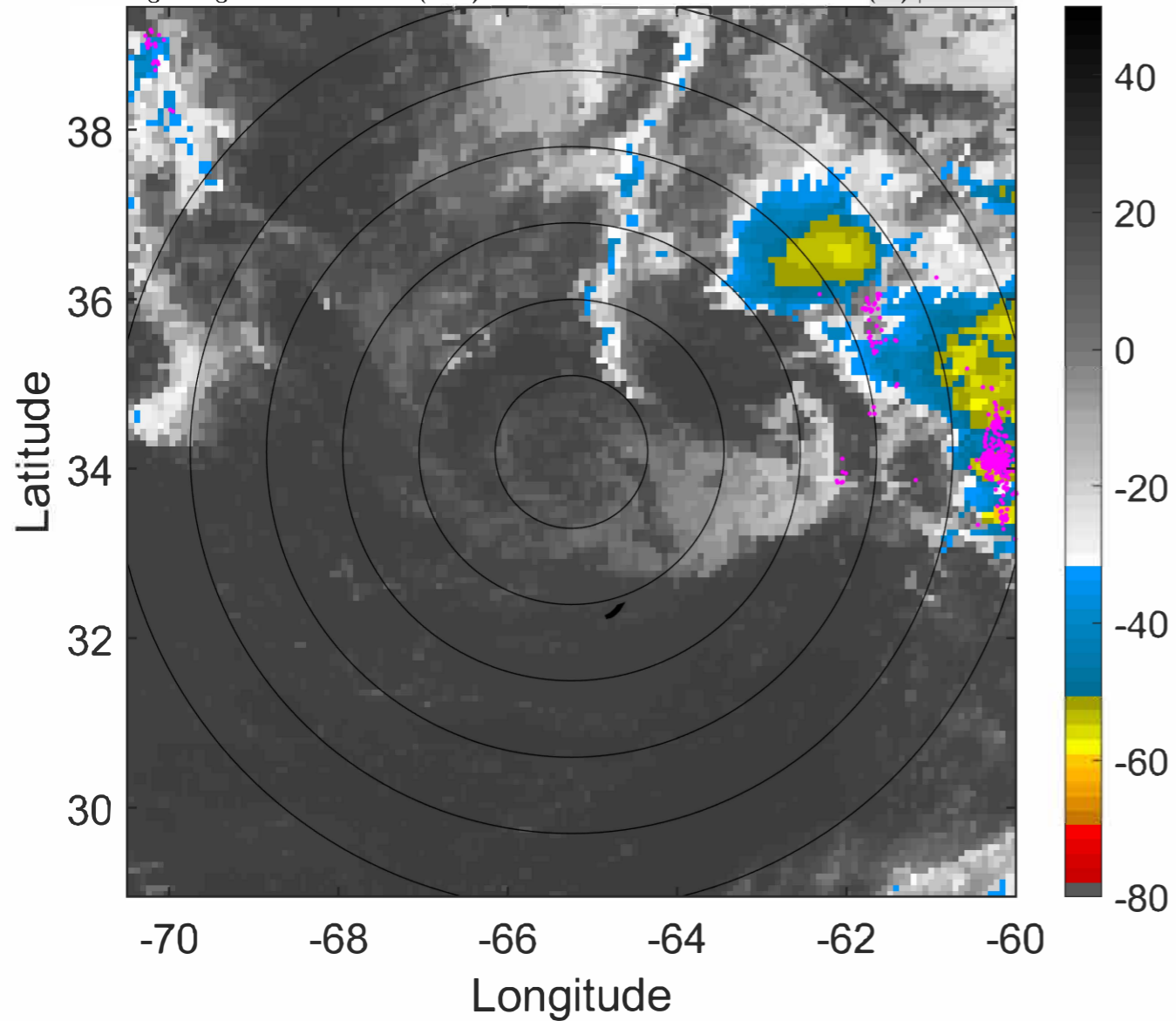
t: 2021092503 (22.7 LT)

Lightning: 22.7 LT  $\pm$  1.5 h (dots)

PT: SLWP | EA: INACT

19L (TERESA) | 37.5 kt SS

S: 7.6 m s<sup>-1</sup> (M) | H: 96.5°



### 6-h IR BT Differences & Lightning

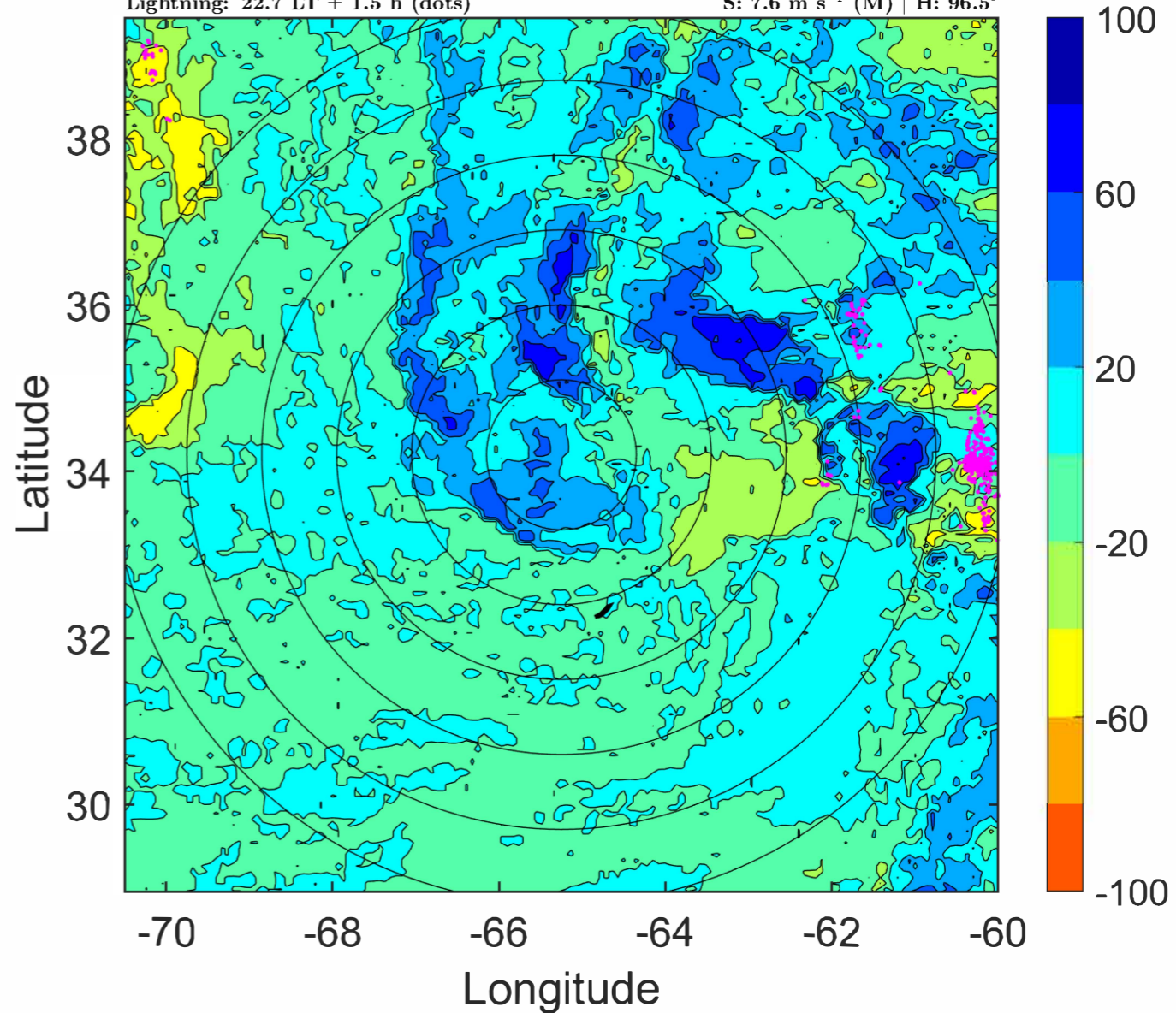
$\Delta$ t: 2021092503 (22.7 LT) - 2021092421 (16.7 LT)

Lightning: 22.7 LT  $\pm$  1.5 h (dots)

PT: SLWP | EA: INACT

19L (TERESA) | 37.5 kt SS

S: 7.6 m s<sup>-1</sup> (M) | H: 96.5°



### IR BT & Lightning

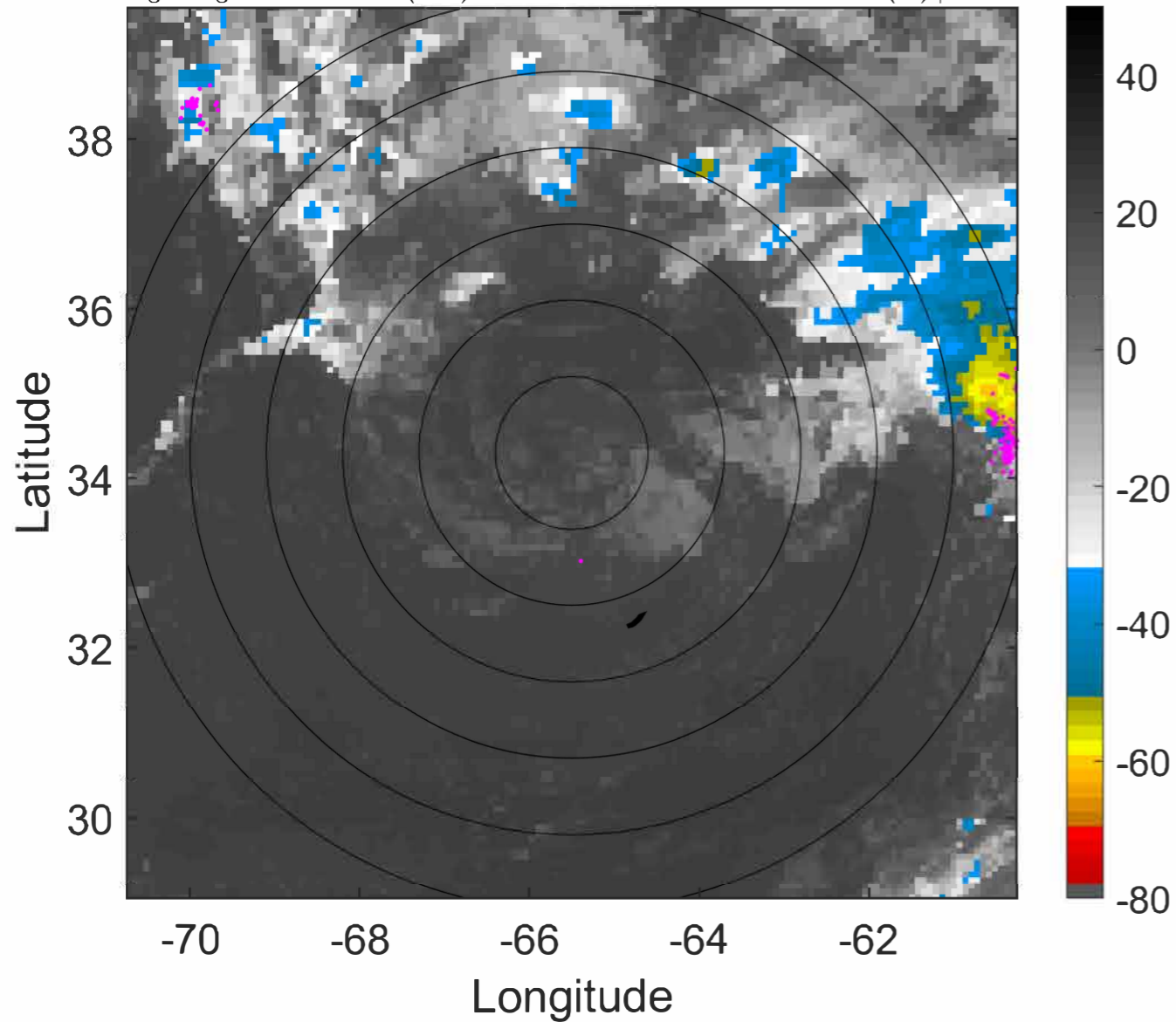
t: 2021092506 (1.6 LT)

Lightning: 1.6 LT  $\pm$  1.5 h (dots)

PT: LLWP | EA: INACT

19L (TERESA) | 35 kt SS

S: 7.8 m s<sup>-1</sup> (M) | H: 99°



### 6-h IR BT Differences & Lightning

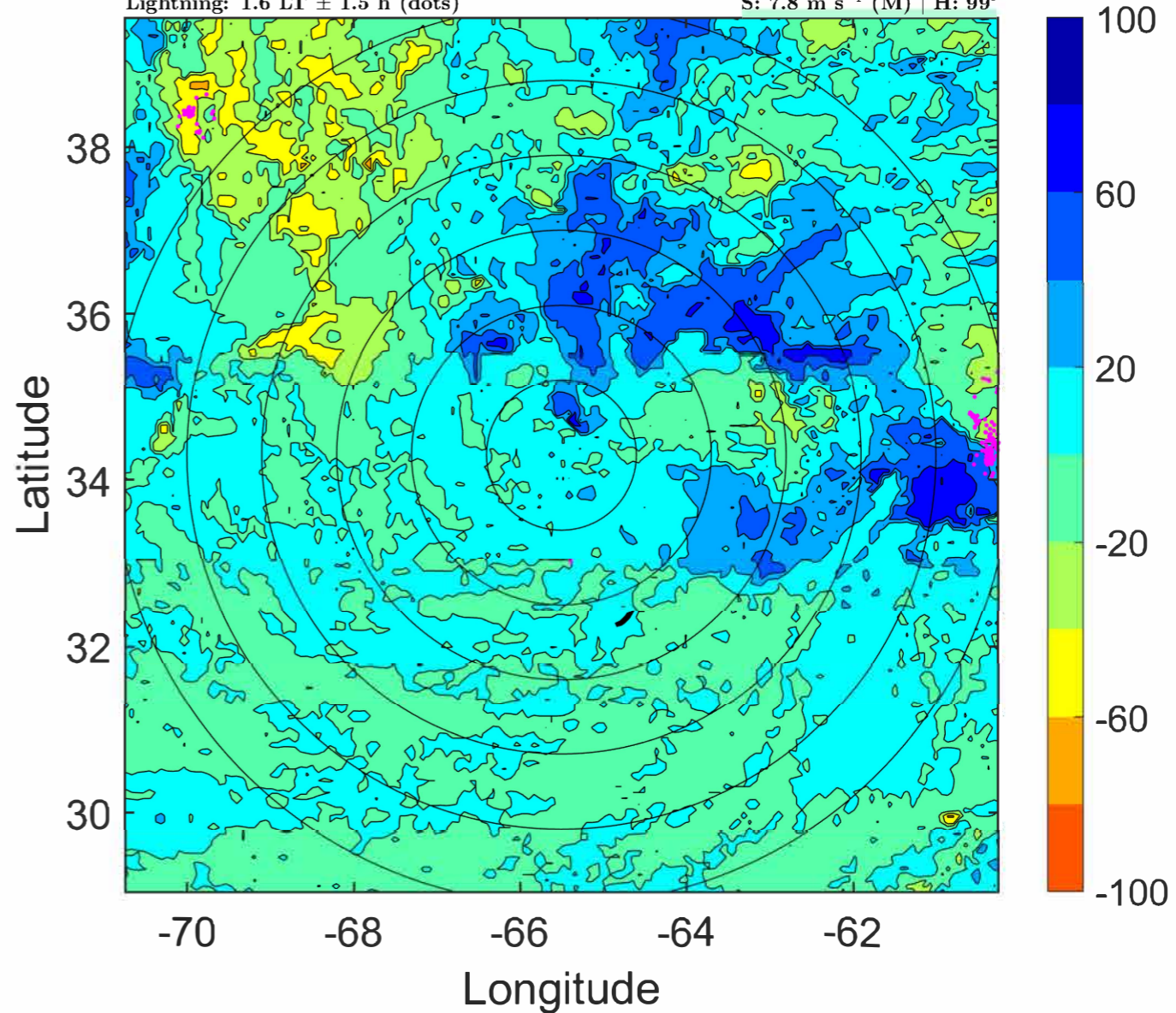
$\Delta$ t: 2021092506 (1.6 LT) - 2021092500 (19.7 LT)

Lightning: 1.6 LT  $\pm$  1.5 h (dots)

PT: LLWP | EA: INACT

19L (TERESA) | 35 kt SS

S: 7.8 m s<sup>-1</sup> (M) | H: 99°



### IR BT & Lightning

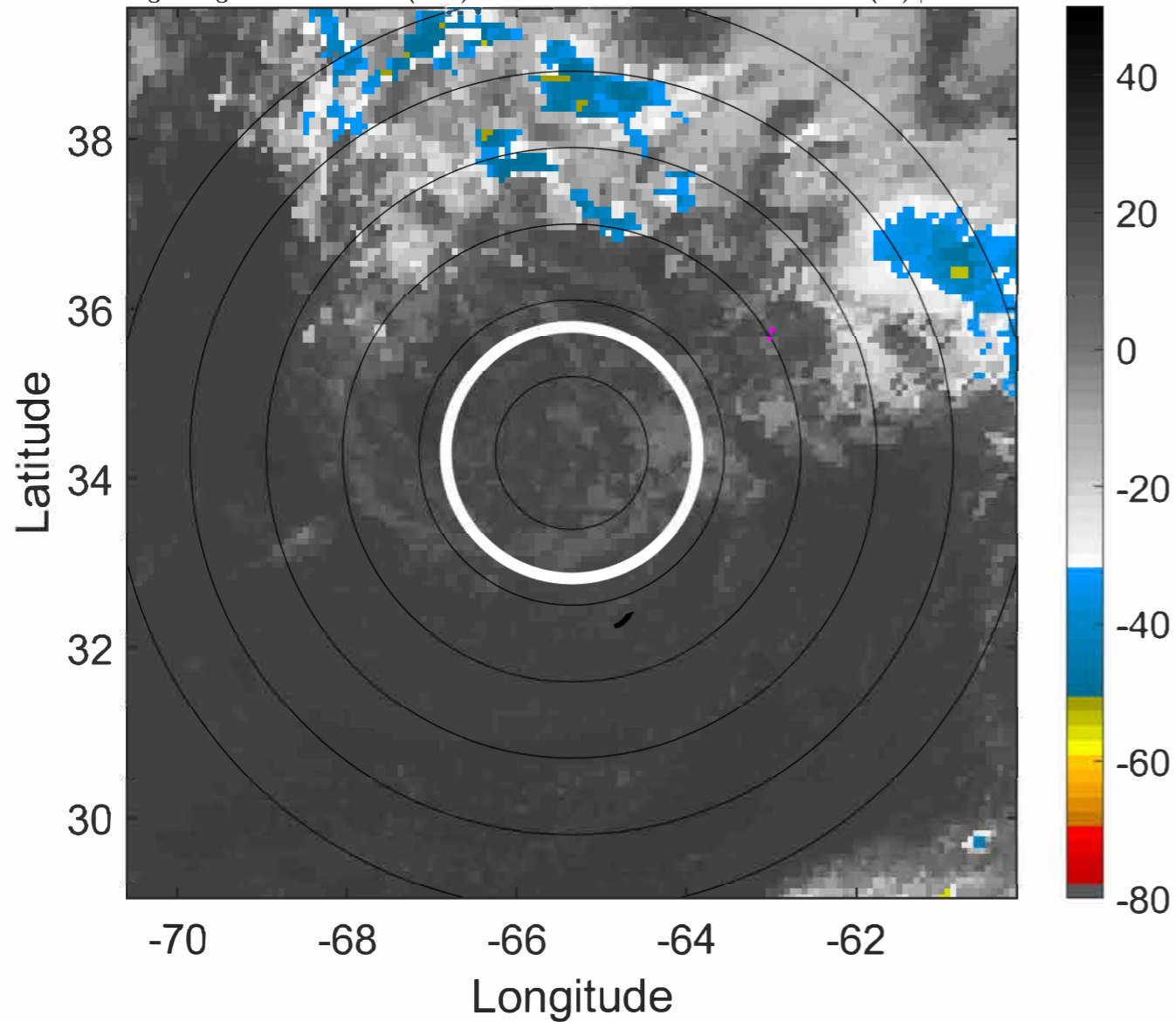
t: 2021092509 (4.6 LT)

Lightning: 4.6 LT  $\pm$  1.5 h (dots)

PT: LLWP | EA: INACT

19L (TERESA) | 32.5 kt SS

S: 7.2 m s<sup>-1</sup> (M) | H: 90.5°



### 6-h IR BT Differences & Lightning

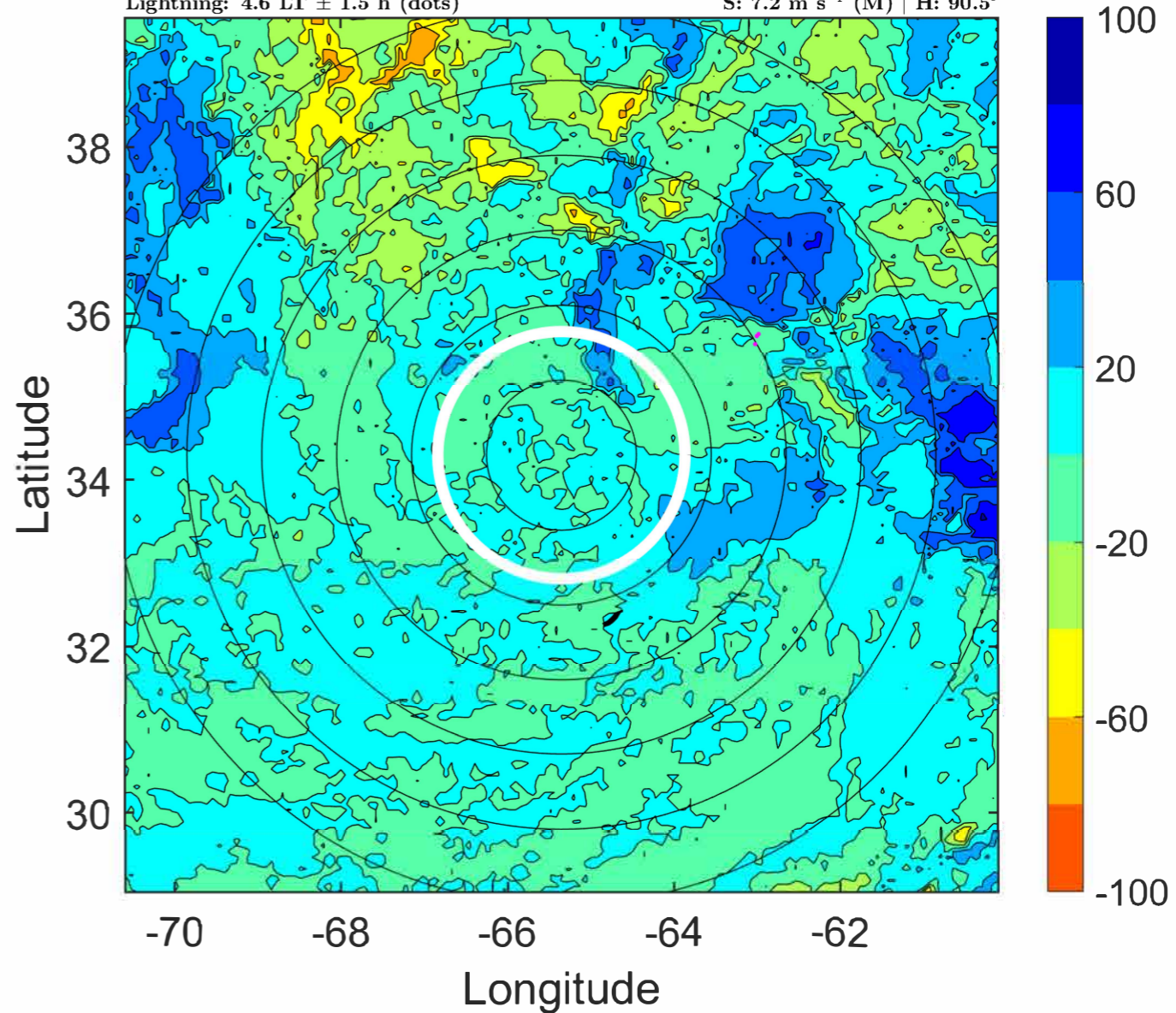
$\Delta$ t: 2021092509 (4.6 LT) - 2021092503 (22.7 LT)

Lightning: 4.6 LT  $\pm$  1.5 h (dots)

PT: LLWP | EA: INACT

19L (TERESA) | 32.5 kt SS

S: 7.2 m s<sup>-1</sup> (M) | H: 90.5°





### IR BT & Lightning

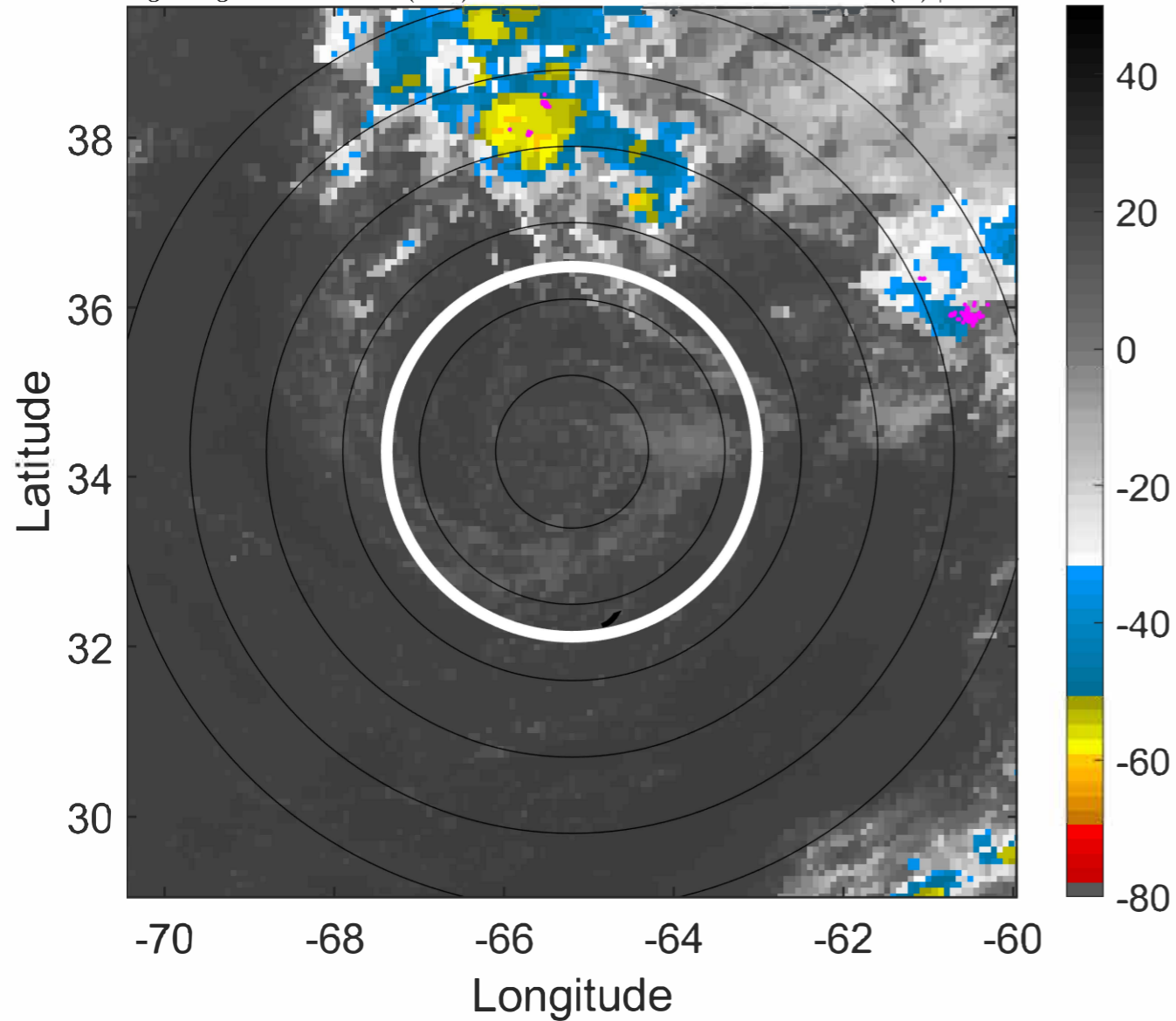
t: 2021092512 (7.7 LT)

Lightning: 7.7 LT  $\pm$  1.5 h (dots)

PT: LLWP | EA: INACT

19L (TERESA) | 30 kt SD

S: 6.6 m s<sup>-1</sup> (M) | H: 82°



### 6-h IR BT Differences & Lightning

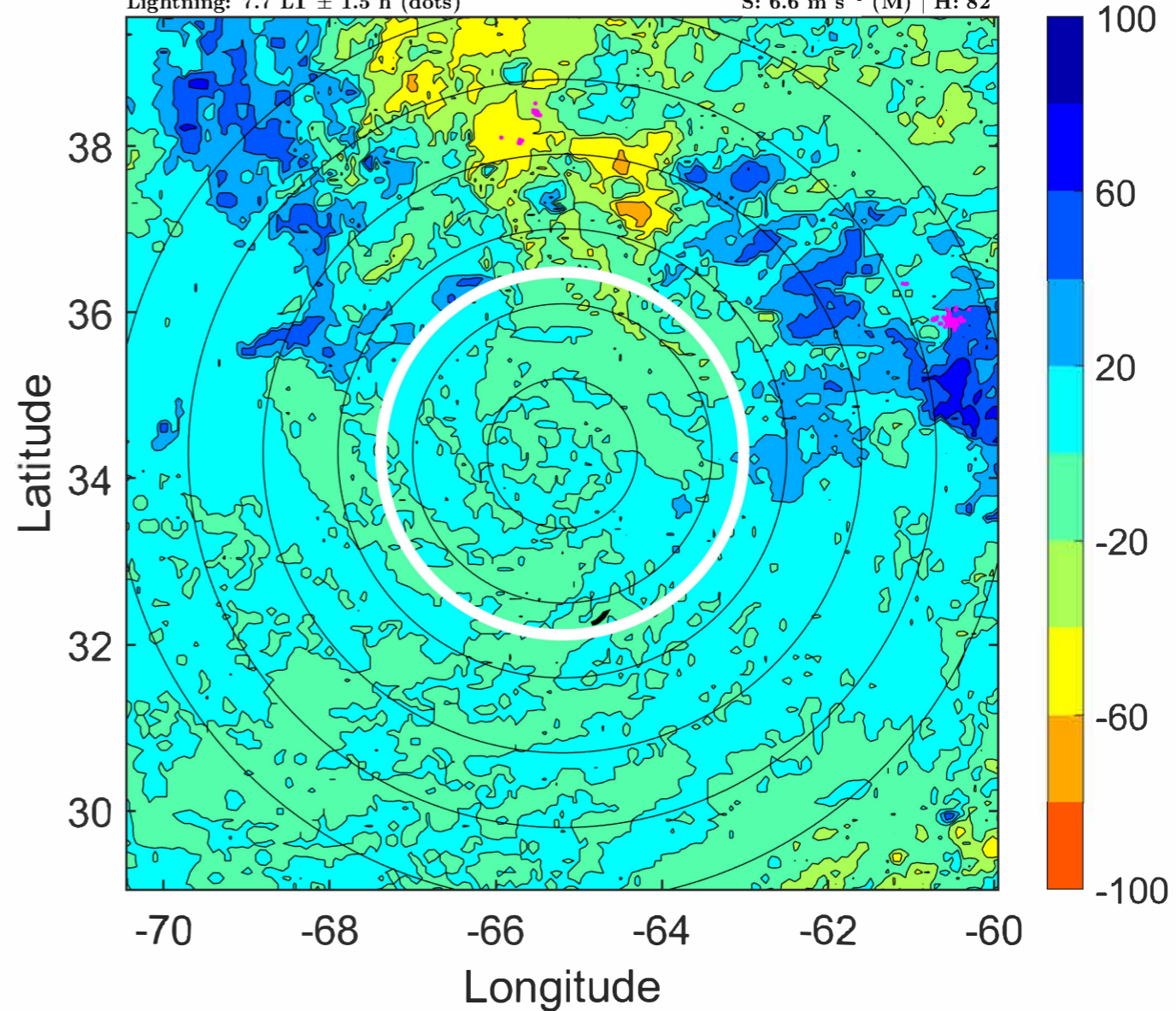
$\Delta$ t: 2021092512 (7.7 LT) - 2021092506 (1.6 LT)

Lightning: 7.7 LT  $\pm$  1.5 h (dots)

PT: LLWP | EA: INACT

19L (TERESA) | 30 kt SD

S: 6.6 m s<sup>-1</sup> (M) | H: 82°



### IR BT & Lightning

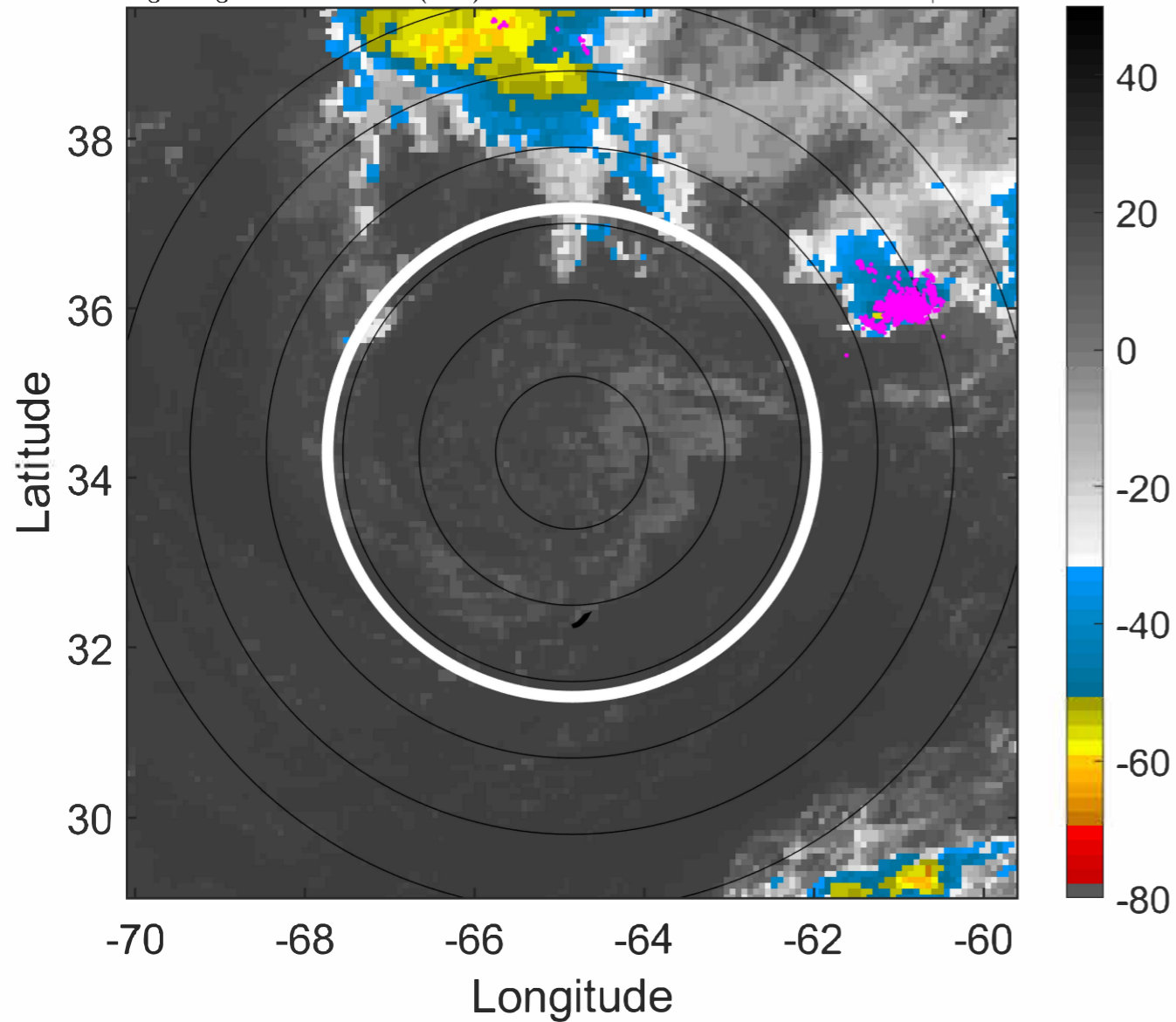
t: 2021092515 (10.7 LT)

Lightning: 10.7 LT  $\pm$  1.5 h (dots)

PT: LLWP | EA: INACT

19L (TERESA) | 30 kt SD

S: null | H: null



### 6-h IR BT Differences & Lightning

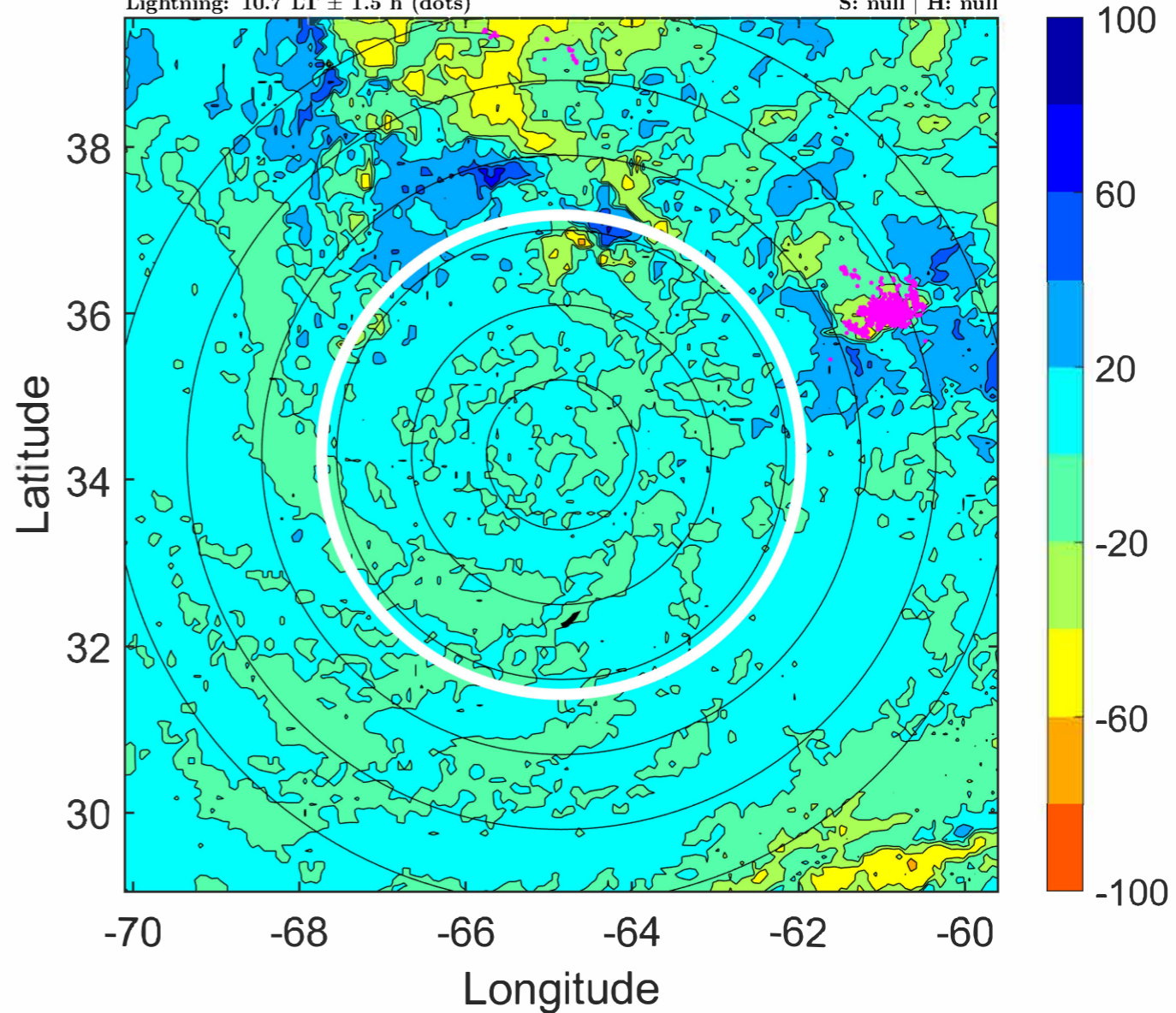
$\Delta$ t: 2021092515 (10.7 LT) - 2021092509 (4.6 LT)

Lightning: 10.7 LT  $\pm$  1.5 h (dots)

PT: LLWP | EA: INACT

19L (TERESA) | 30 kt SD

S: null | H: null



### IR BT & Lightning

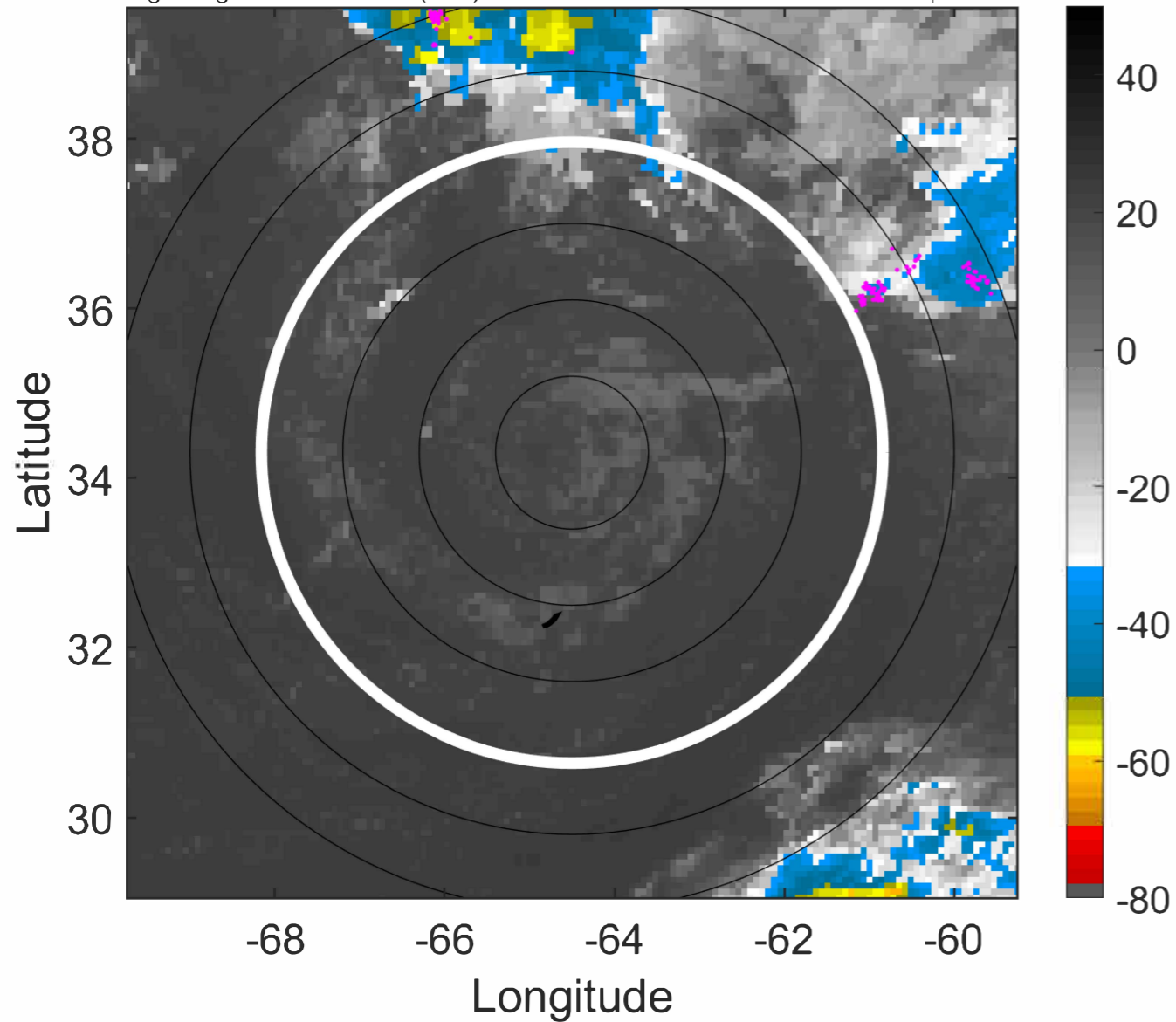
t: 2021092518 (13.7 LT)

Lightning: 13.7 LT  $\pm$  1.5 h (dots)

PT: LLWP | EA: INACT

19L (TERESA) | 30 kt LO

S: null | H: null



### 6-h IR BT Differences & Lightning

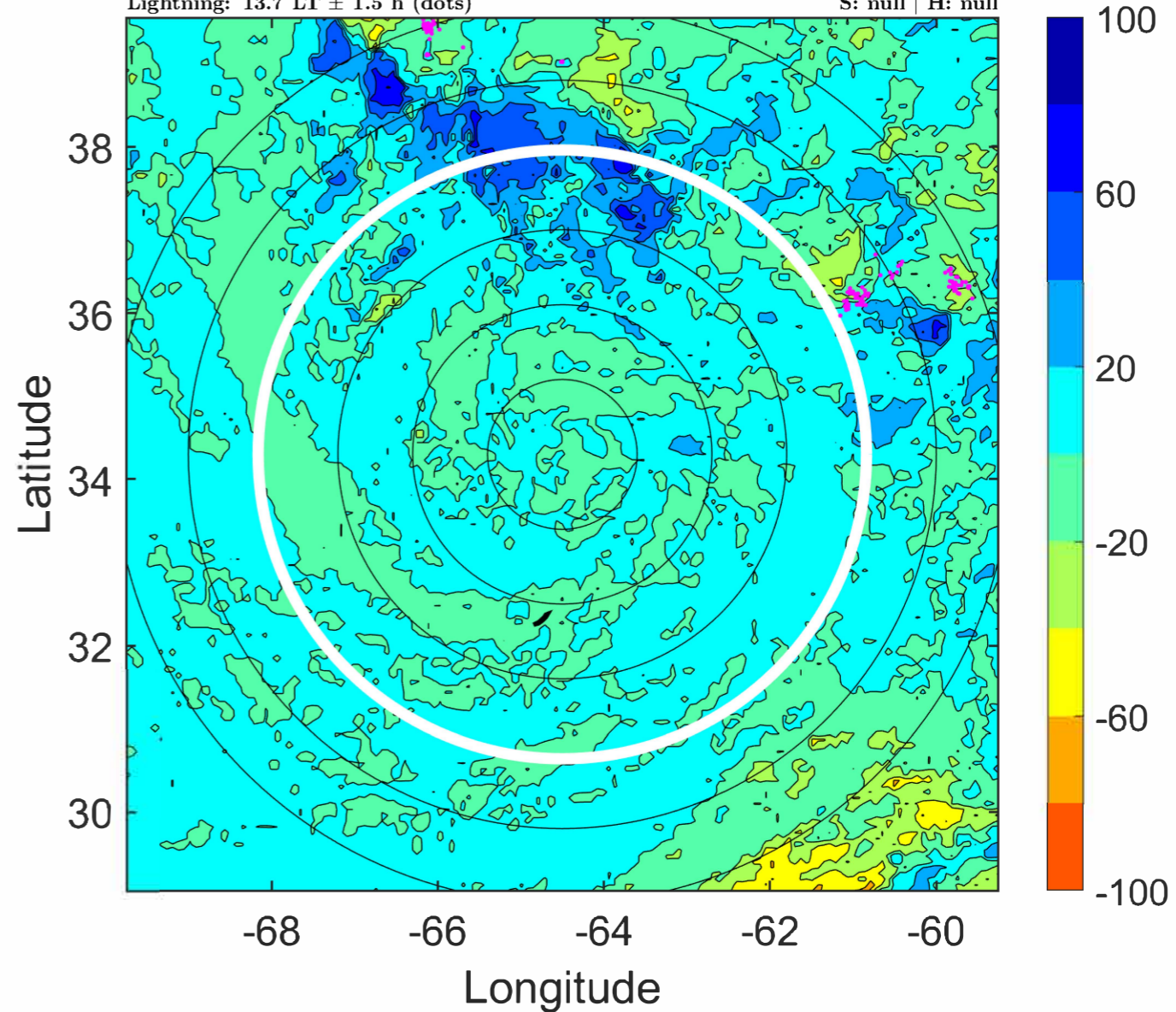
$\Delta$ t: 2021092518 (13.7 LT) - 2021092512 (7.7 LT)

Lightning: 13.7 LT  $\pm$  1.5 h (dots)

PT: LLWP | EA: INACT

19L (TERESA) | 30 kt LO

S: null | H: null



### IR BT & Lightning

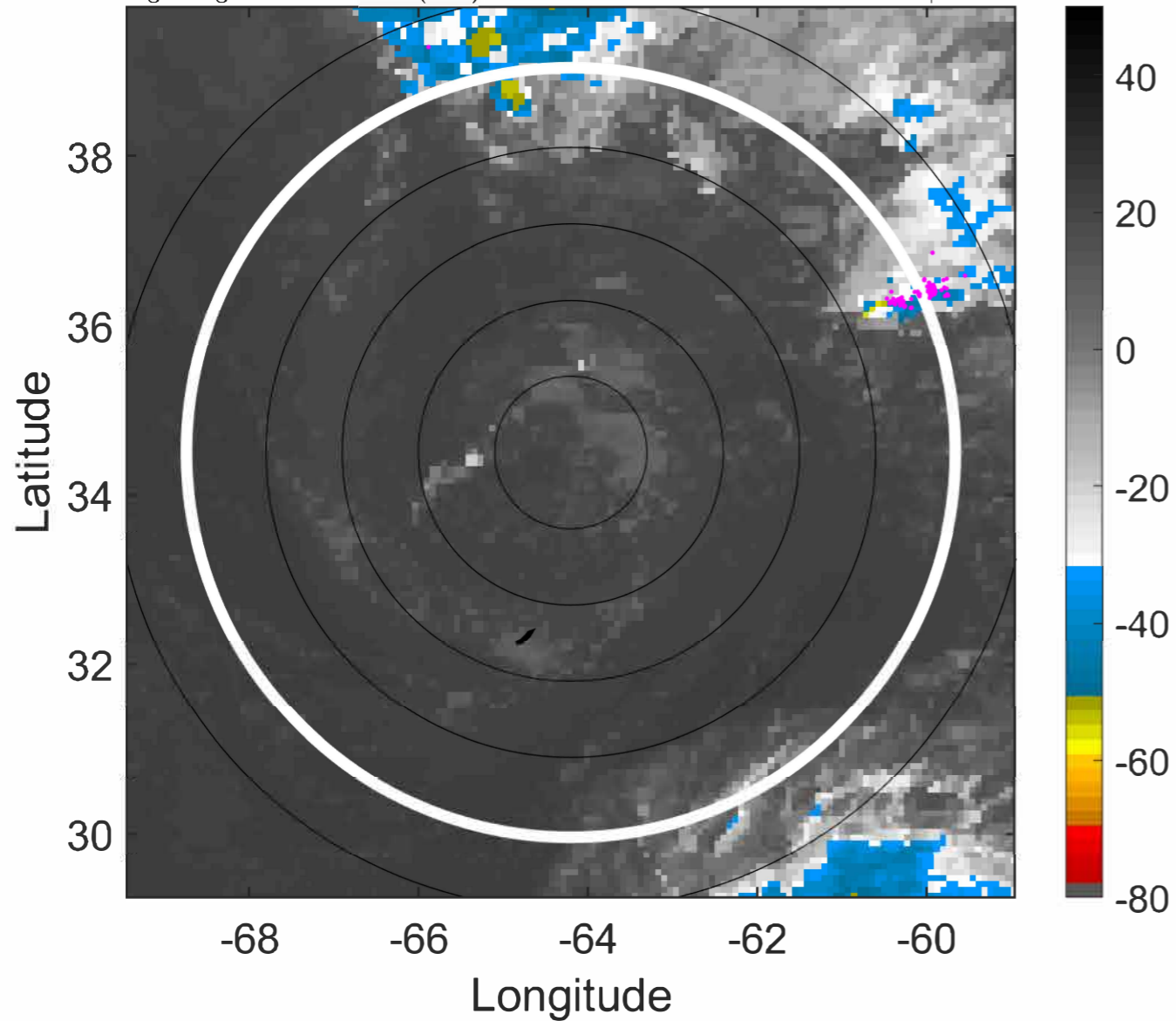
t: 2021092521 (16.7 LT)

Lightning: 16.7 LT  $\pm$  1.5 h (dots)

PT: LLWP | EA: INACT

19L (TERESA) | 30 kt LO

S: null | H: null



### 6-h IR BT Differences & Lightning

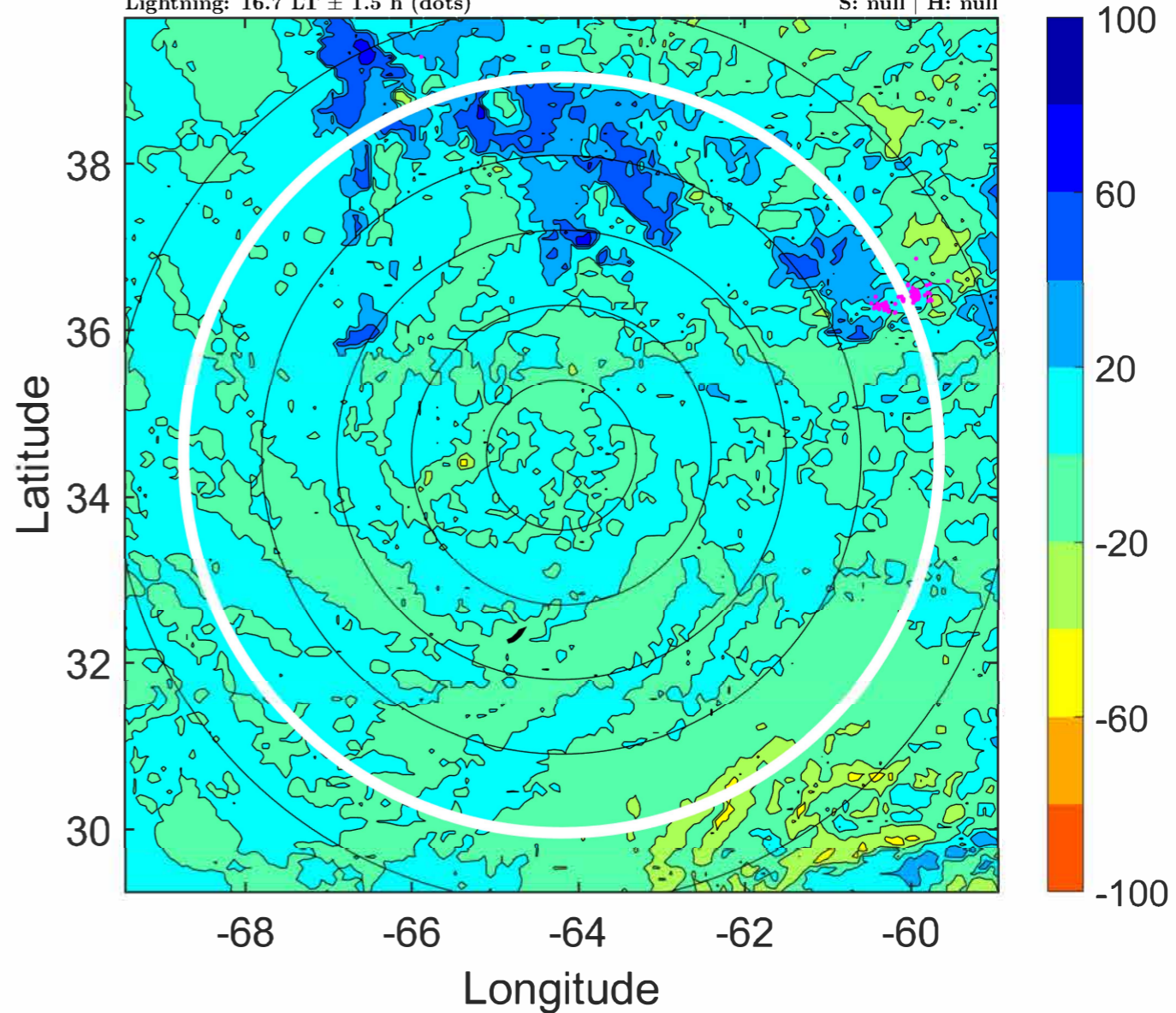
$\Delta$ t: 2021092521 (16.7 LT) - 2021092515 (10.7 LT)

Lightning: 16.7 LT  $\pm$  1.5 h (dots)

PT: LLWP | EA: INACT

19L (TERESA) | 30 kt LO

S: null | H: null



### IR BT & Lightning

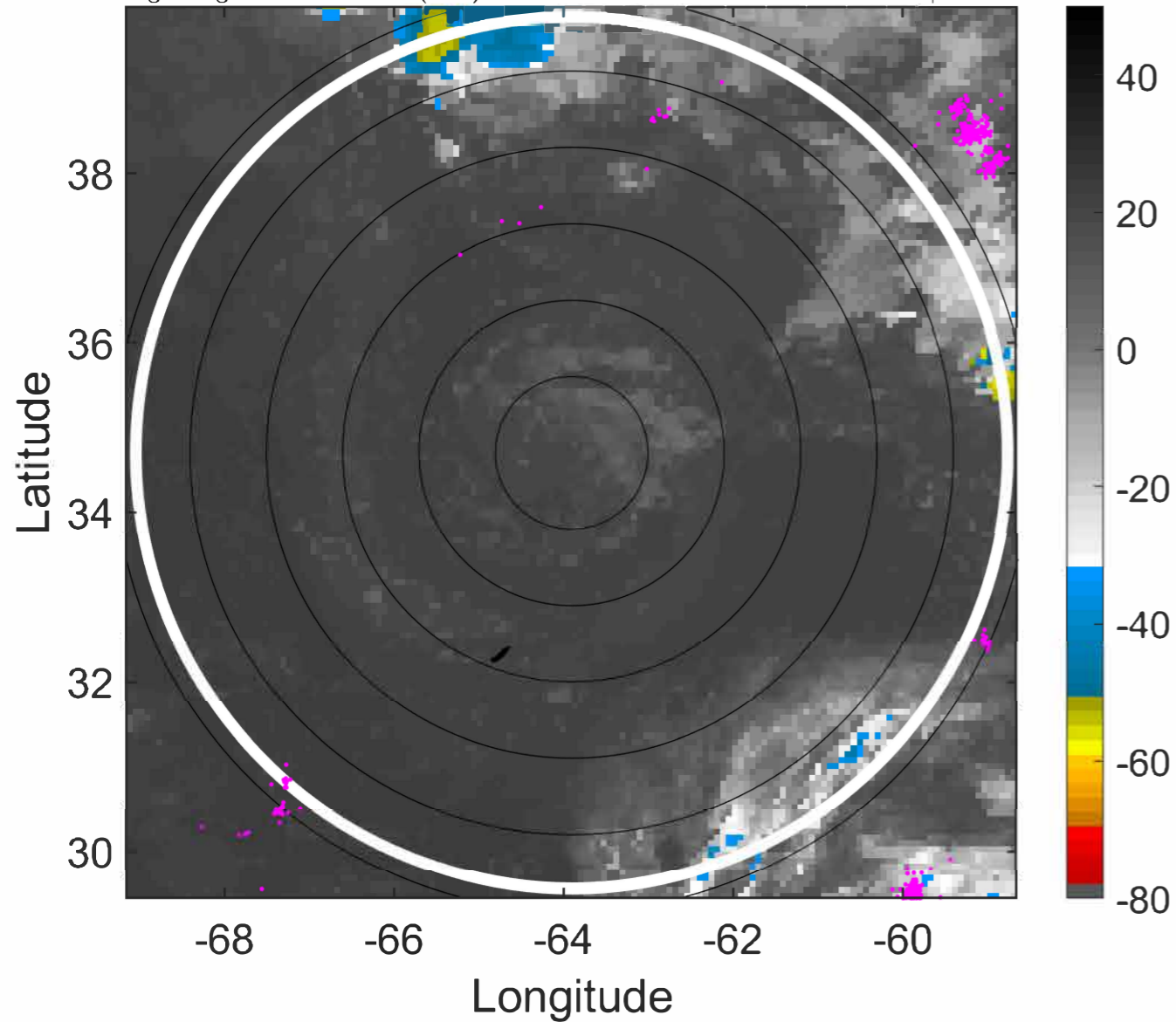
t: 2021092600 (19.7 LT)

Lightning: 19.7 LT  $\pm$  1.5 h (dots)

PT: LLWP | EA: INACT

19L (TERESA) | 30 kt LO

S: null | H: null



### 6-h IR BT Differences & Lightning

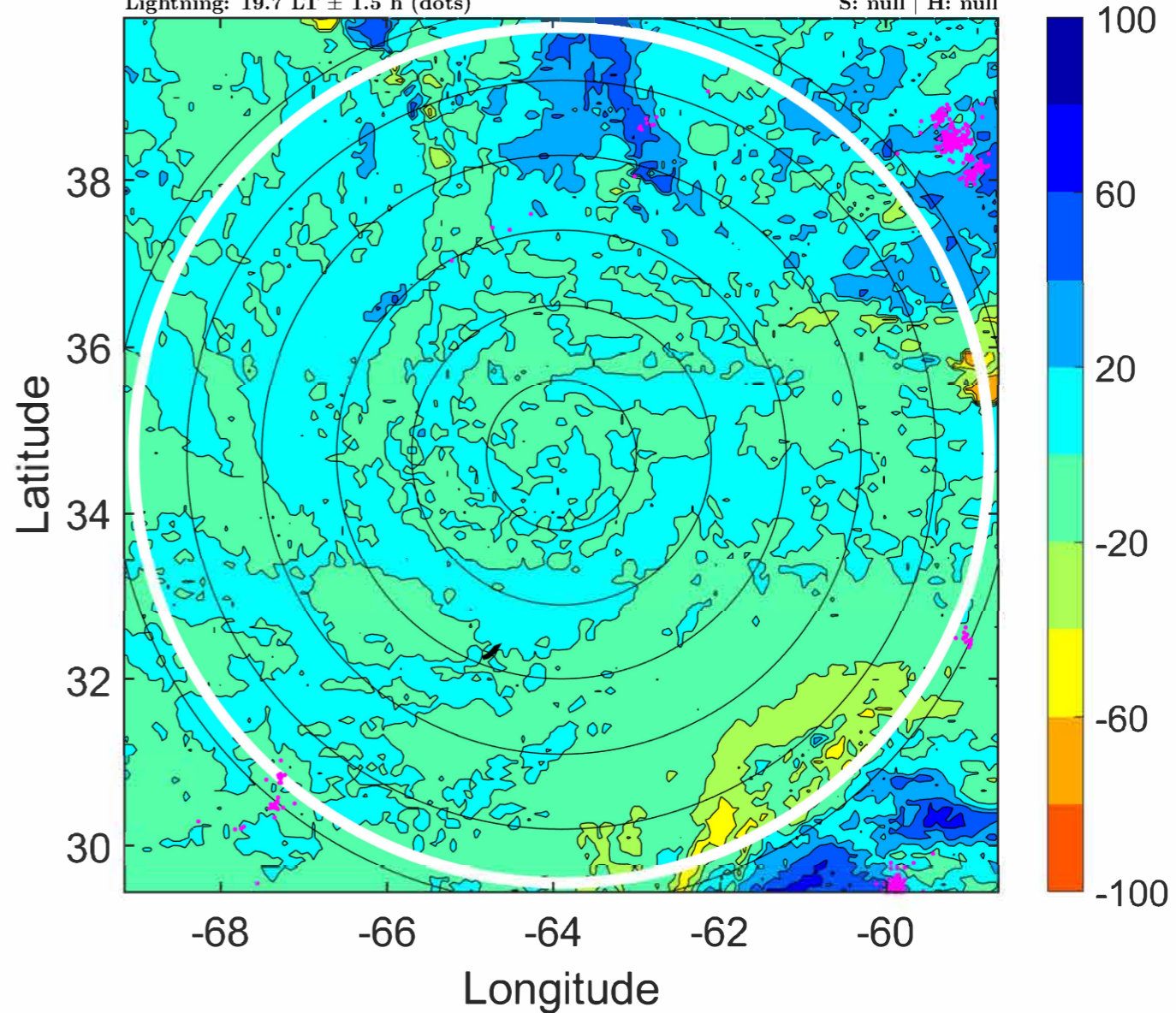
$\Delta$ t: 2021092600 (19.7 LT) - 2021092518 (13.7 LT)

Lightning: 19.7 LT  $\pm$  1.5 h (dots)

PT: LLWP | EA: INACT

19L (TERESA) | 30 kt LO

S: null | H: null



### IR BT & Lightning

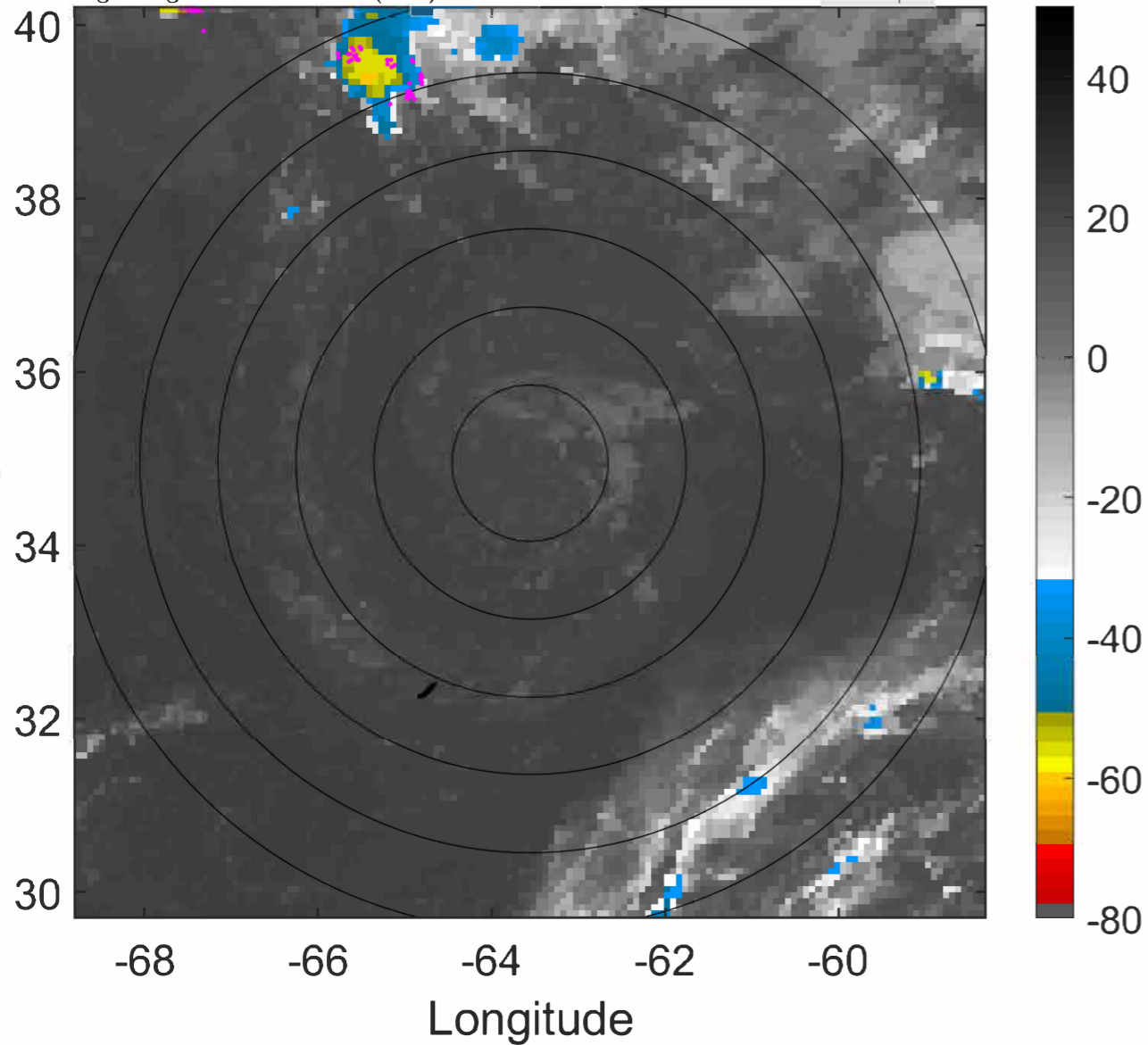
t: 2021092603 (22.8 LT)

Lightning: 22.8 LT  $\pm$  1.5 h (dots)

PT: LLWP | EA: INACT

19L (TERESA) | 30 kt LO

S: null | H: null



### 6-h IR BT Differences & Lightning

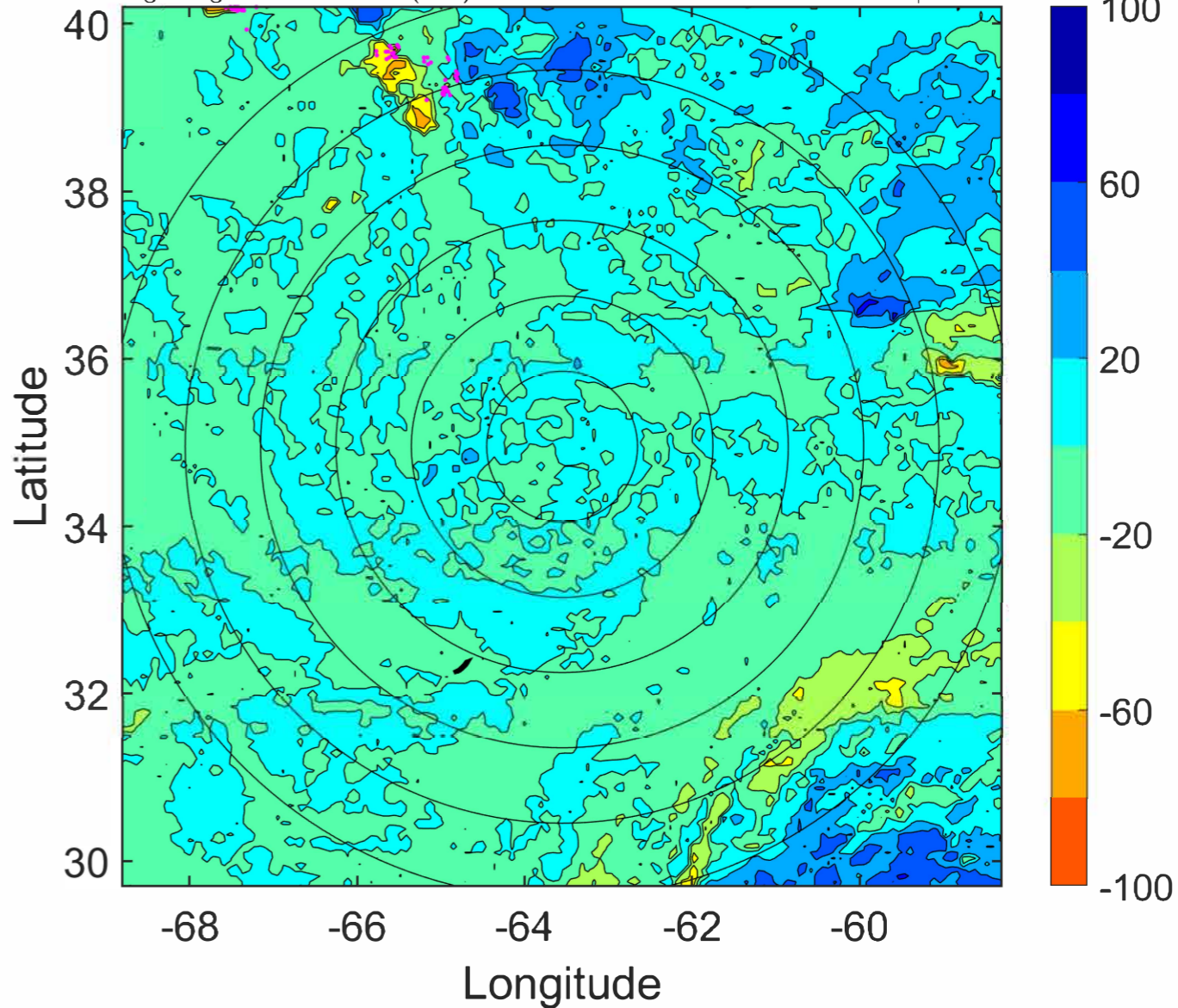
$\Delta$ t: 2021092603 (22.8 LT) - 2021092521 (16.7 LT)

Lightning: 22.8 LT  $\pm$  1.5 h (dots)

PT: LLWP | EA: INACT

19L (TERESA) | 30 kt LO

S: null | H: null



### IR BT & Lightning

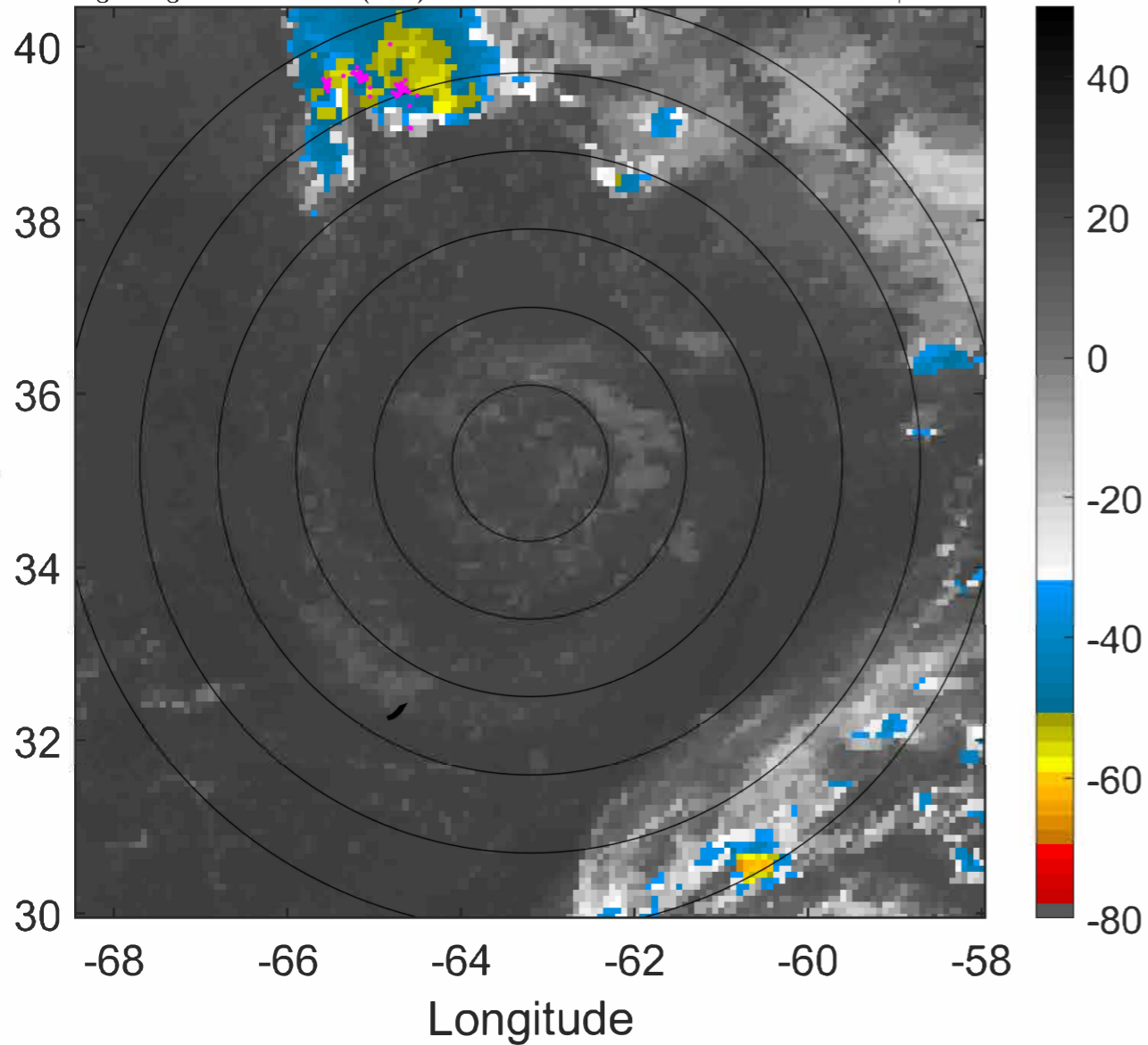
t: 2021092606 (1.8 LT)

Lightning: 1.8 LT  $\pm$  1.5 h (dots)

PT: NP | EA: INACT

19L (TERESA) | 30 kt LO

S: null | H: null



### 6-h IR BT Differences & Lightning

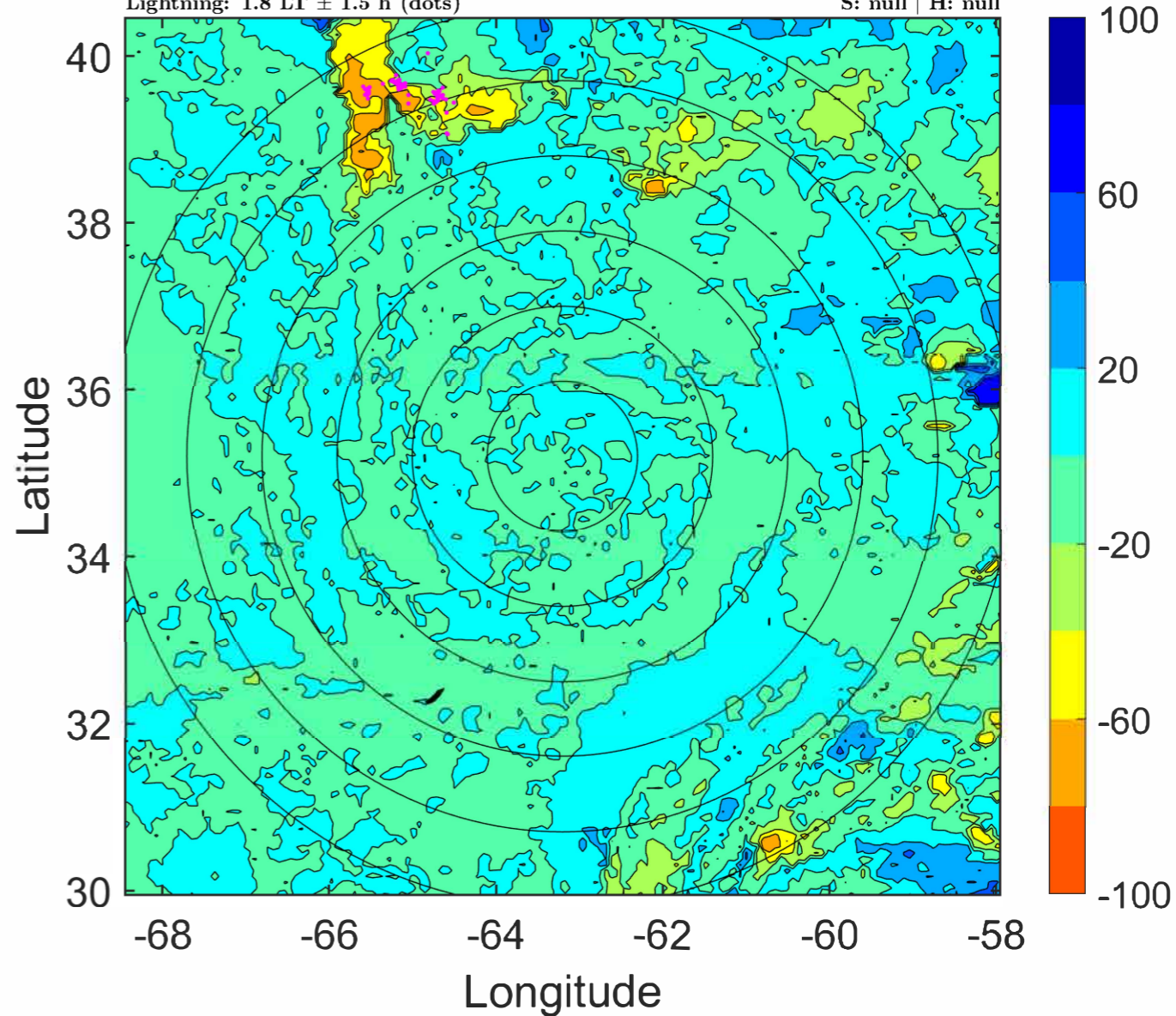
$\Delta$ t: 2021092606 (1.8 LT) - 2021092600 (19.7 LT)

Lightning: 1.8 LT  $\pm$  1.5 h (dots)

PT: NP | EA: INACT

19L (TERESA) | 30 kt LO

S: null | H: null



### IR BT & Lightning

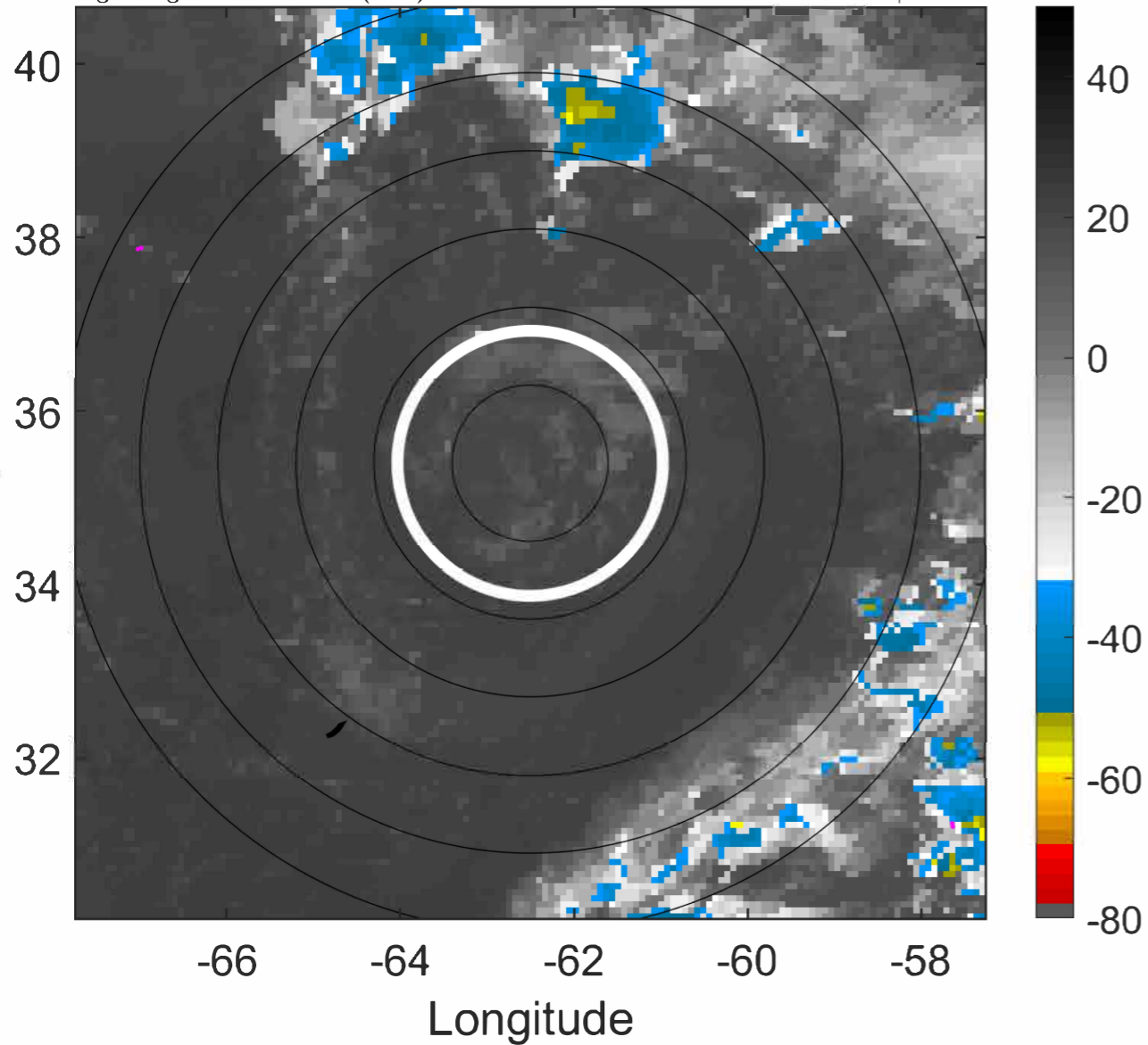
t: 2021092609 (4.8 LT)

Lightning: 4.8 LT  $\pm$  1.5 h (dots)

PT: NP | EA: INACT

19L (TERESA) | 27.5 kt LO

S: null | H: null



### 6-h IR BT Differences & Lightning

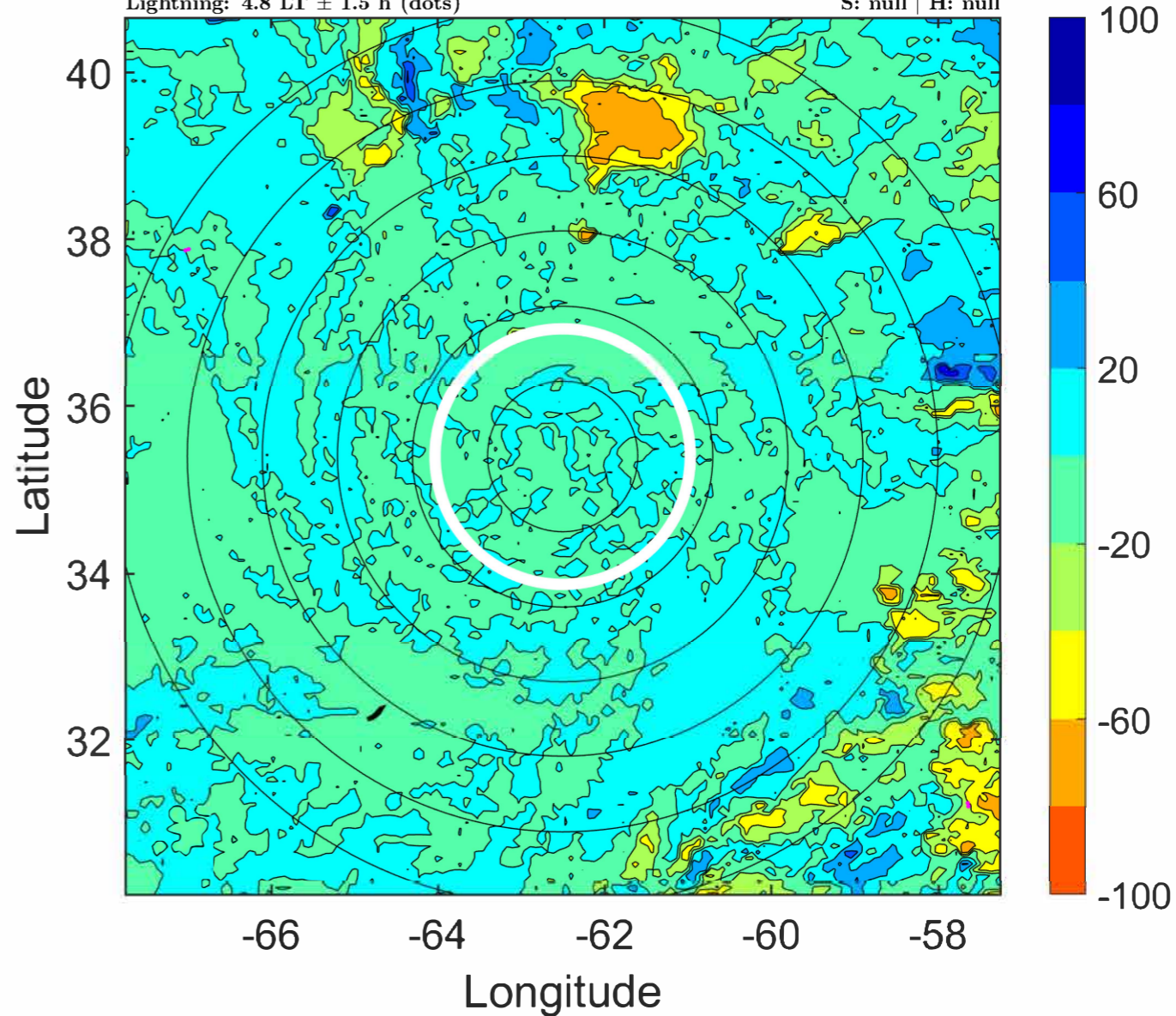
$\Delta$ t: 2021092609 (4.8 LT) - 2021092603 (22.8 LT)

Lightning: 4.8 LT  $\pm$  1.5 h (dots)

PT: NP | EA: INACT

19L (TERESA) | 27.5 kt LO

S: null | H: null





### IR BT & Lightning

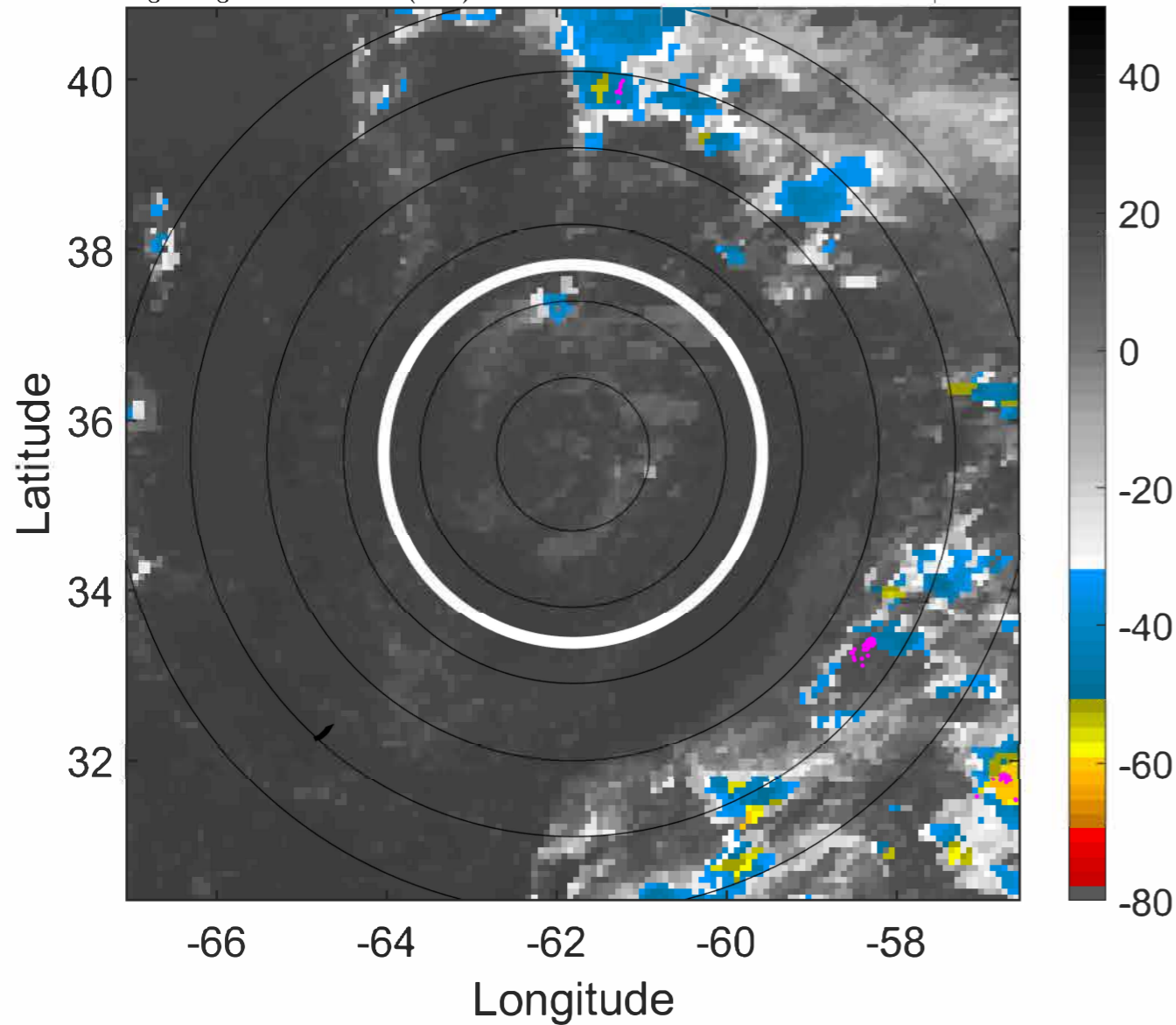
t: 2021092612 (7.9 LT)

Lightning: 7.9 LT  $\pm$  1.5 h (dots)

PT: NP | EA: INACT

19L (TERESA) | 25 kt LO

S: null | H: null



### 6-h IR BT Differences & Lightning

$\Delta$ t: 2021092612 (7.9 LT) - 2021092606 (1.8 LT)

Lightning: 7.9 LT  $\pm$  1.5 h (dots)

PT: NP | EA: INACT

19L (TERESA) | 25 kt LO

S: null | H: null

