

### IR BT & Lightning

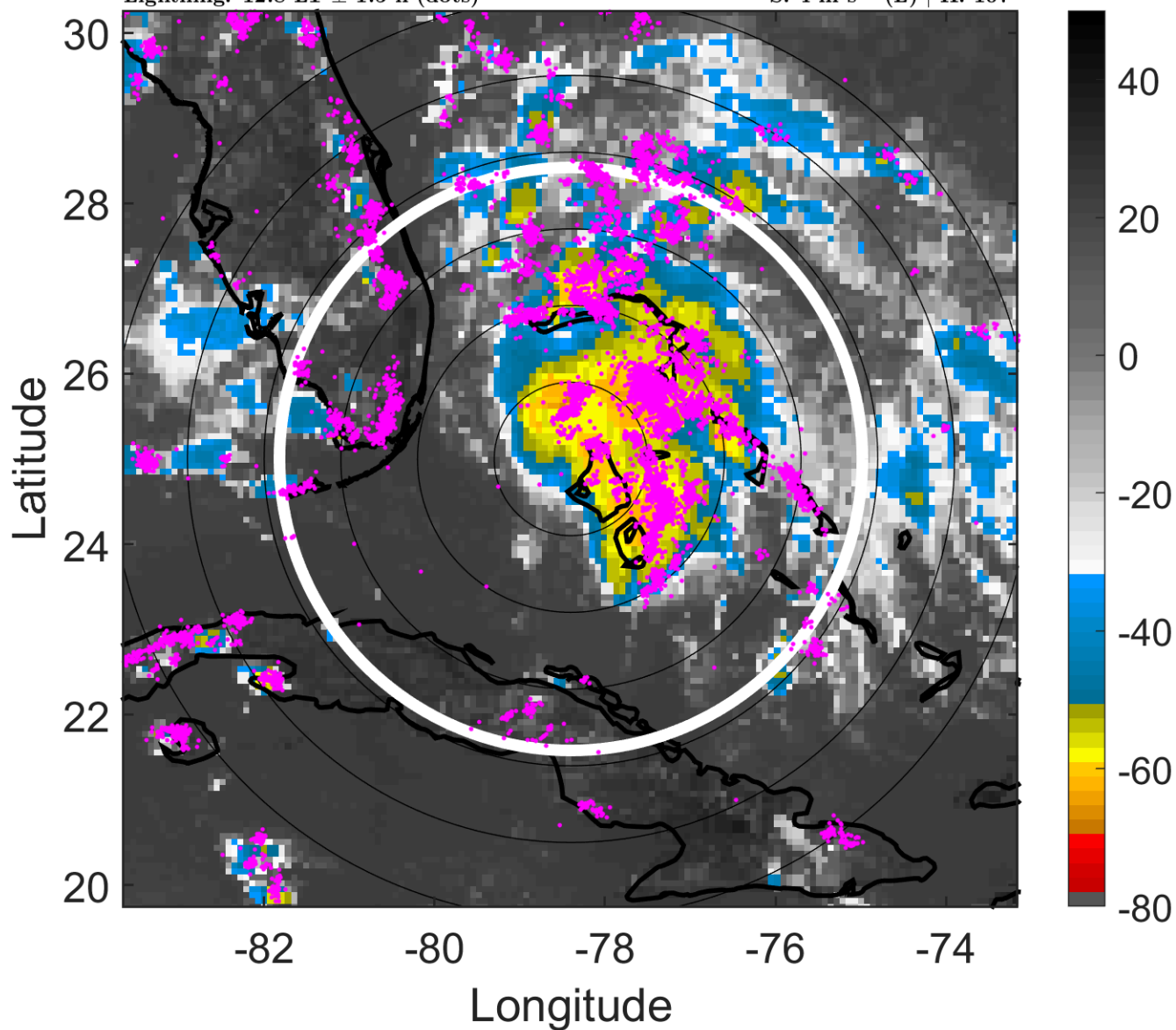
t: 2019072218 (12.8 LT)

Lightning: 12.8 LT  $\pm$  1.5 h (dots)

PT: SLCP | EA: QUASI

03L (THREE) | 25 kt TD

S: 4 m s<sup>-1</sup> (L) | H: 107°



### 6-h IR BT Differences & Lightning

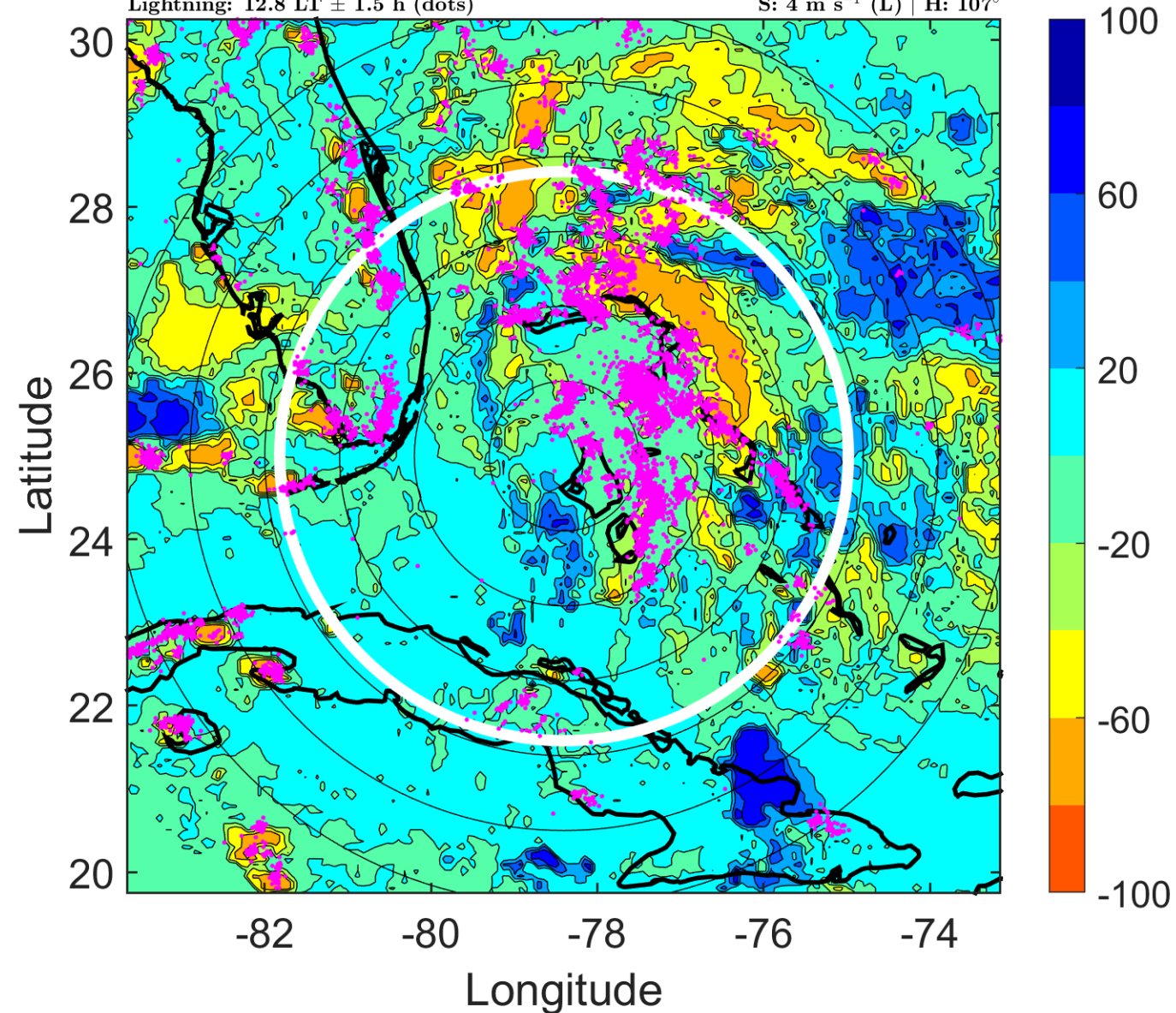
$\Delta$ t: 2019072218 (12.8 LT) - 2019072212 (6.8 LT)

Lightning: 12.8 LT  $\pm$  1.5 h (dots)

PT: SLCP | EA: QUASI

03L (THREE) | 25 kt TD

S: 4 m s<sup>-1</sup> (L) | H: 107°



### IR BT & Lightning

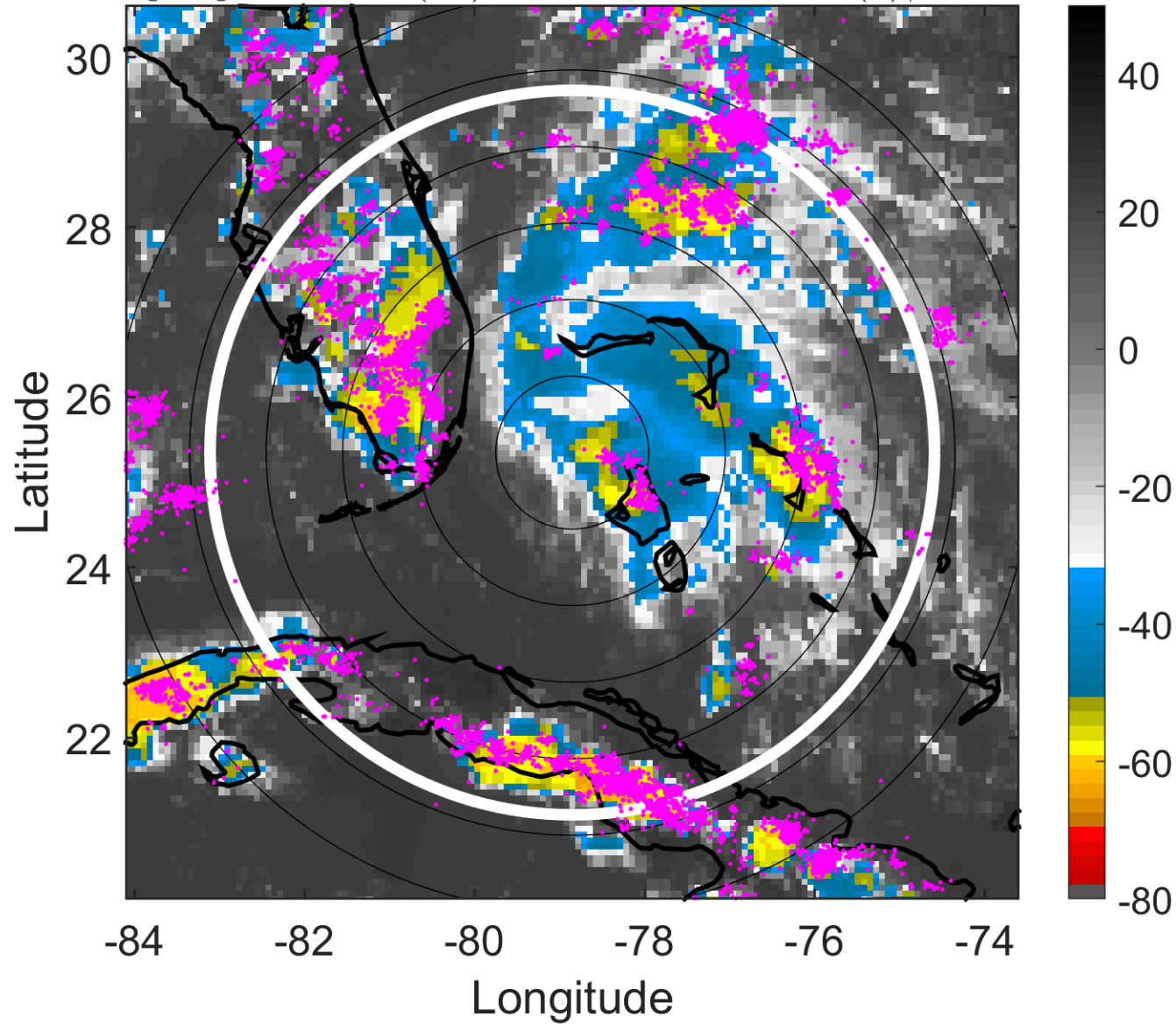
t: 2019072221 (15.7 LT)

Lightning: 15.7 LT  $\pm$  1.5 h (dots)

PT: SLCP | EA: QUASI

03L (THREE) | 25 kt TD

S: 4.7 m s<sup>-1</sup> (M) | H: 100.5°



### 6-h IR BT Differences & Lightning

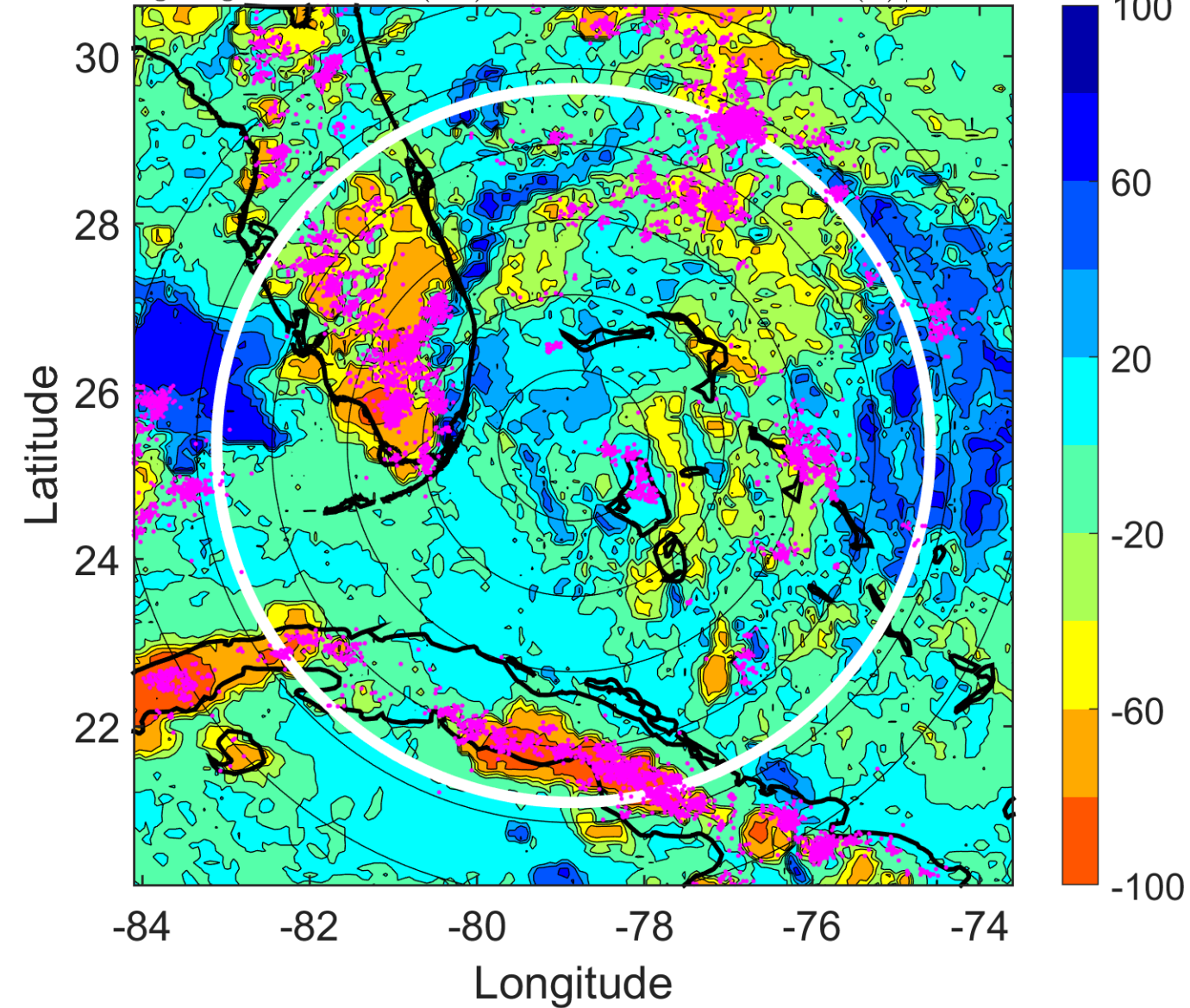
$\Delta$ t: 2019072221 (15.7 LT) - 2019072215 (9.8 LT)

Lightning: 15.7 LT  $\pm$  1.5 h (dots)

PT: SLCP | EA: QUASI

03L (THREE) | 25 kt TD

S: 4.7 m s<sup>-1</sup> (M) | H: 100.5°





### IR BT & Lightning

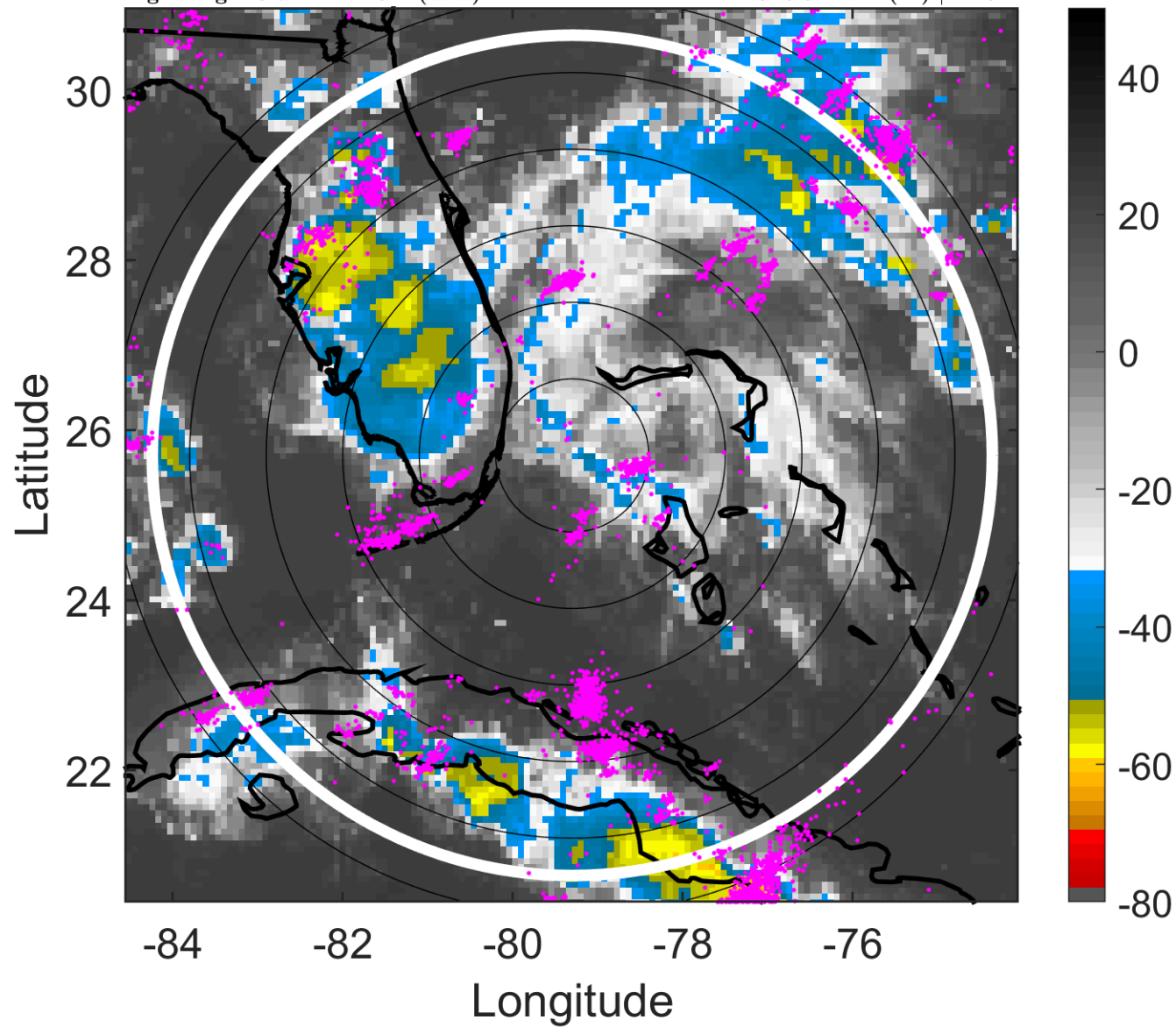
t: 2019072300 (18.7 LT)

Lightning: 18.7 LT  $\pm$  1.5 h (dots)

PT: SLCP | EA: QUASI

03L (THREE) | 25 kt TD

S: 5.5 m s<sup>-1</sup> (M) | H: 94°



### 6-h IR BT Differences & Lightning

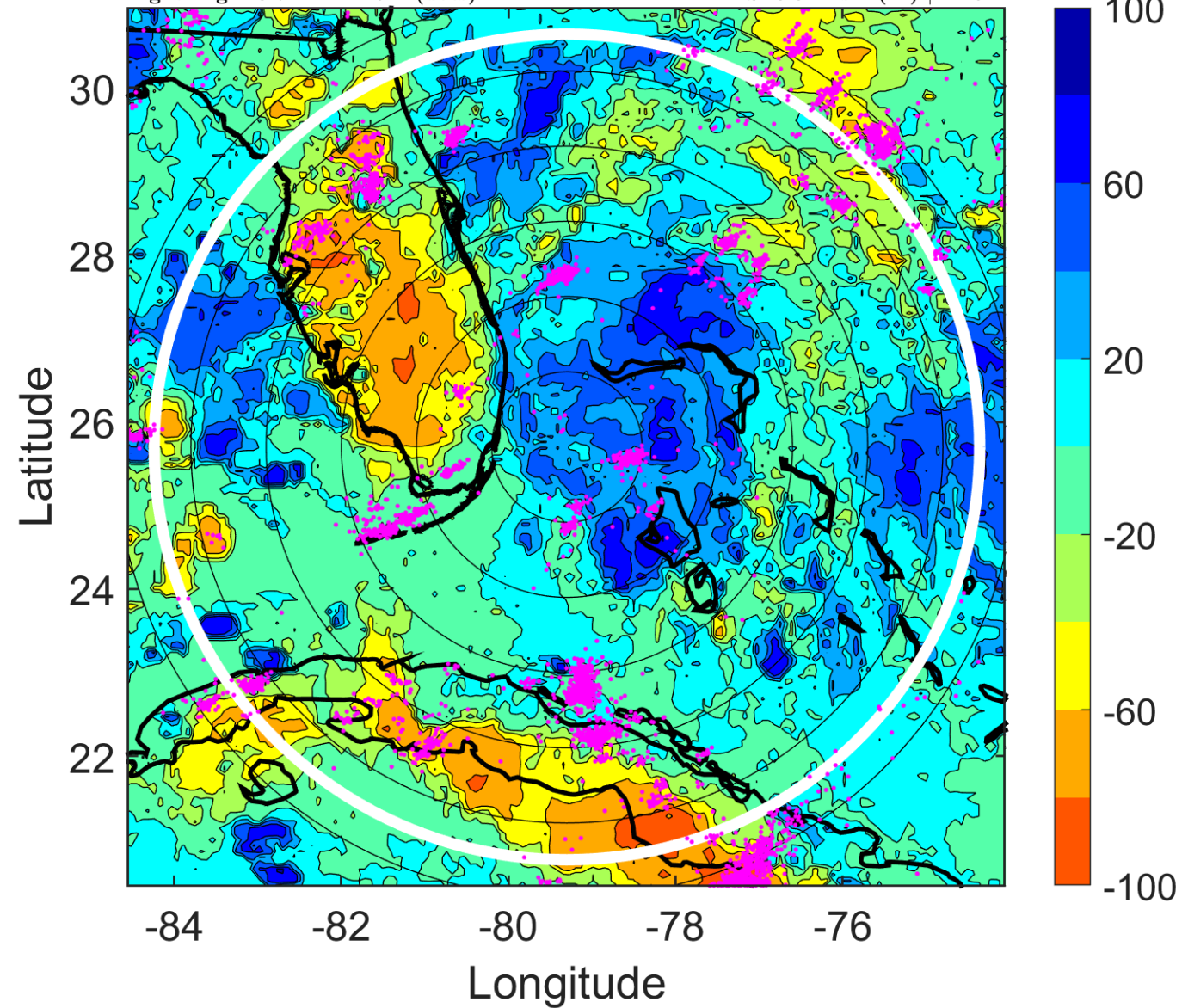
$\Delta$ t: 2019072300 (18.7 LT) - 2019072218 (12.8 LT)

Lightning: 18.7 LT  $\pm$  1.5 h (dots)

PT: SLCP | EA: QUASI

03L (THREE) | 25 kt TD

S: 5.5 m s<sup>-1</sup> (M) | H: 94°



### IR BT & Lightning

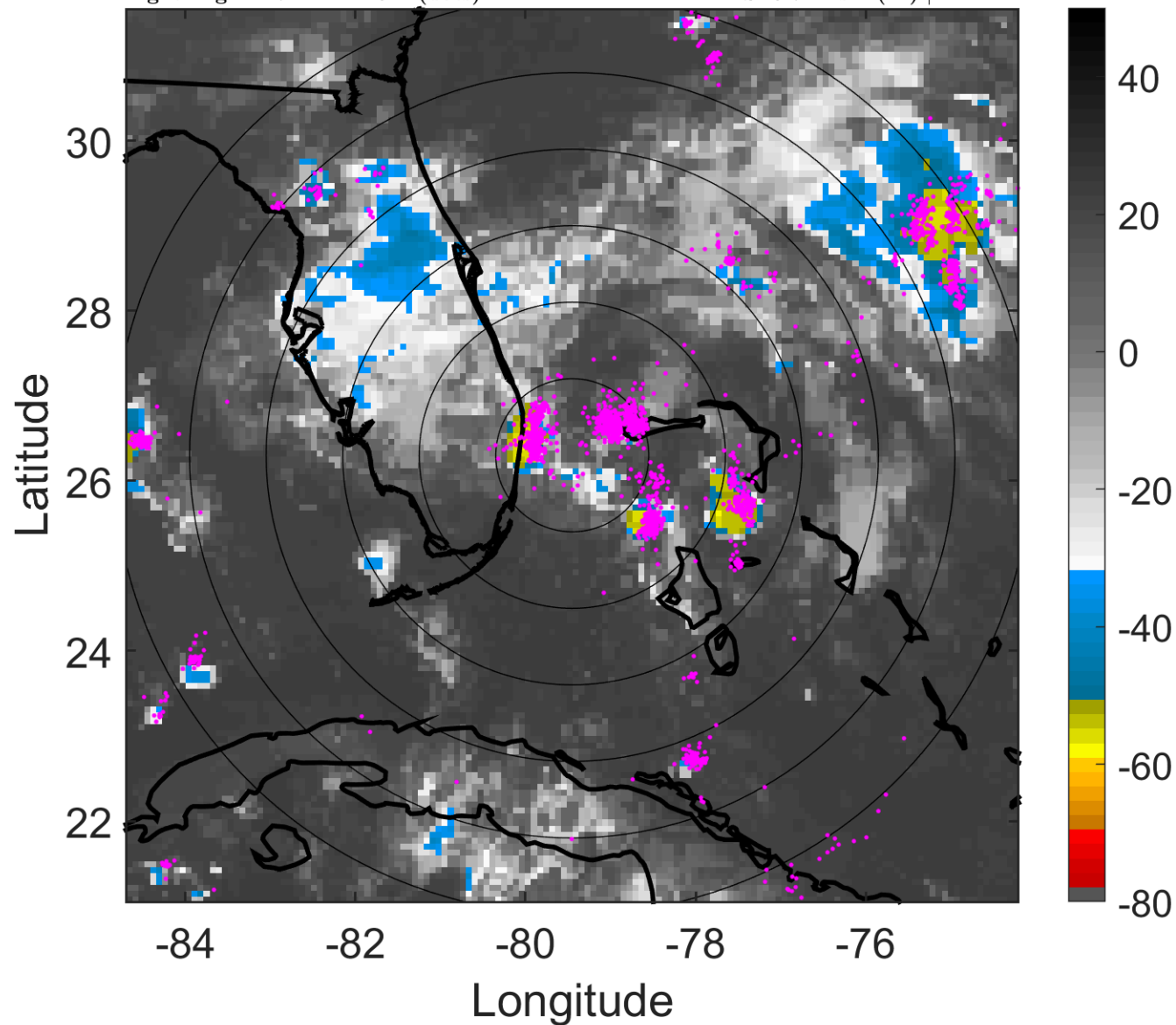
t: 2019072303 (21.7 LT)

Lightning: 21.7 LT  $\pm$  1.5 h (dots)

PT: SLCP | EA: QUASI

03L (THREE) | 27.5 kt TD

S: 5.7 m s<sup>-1</sup> (M) | H: 114°



### 6-h IR BT Differences & Lightning

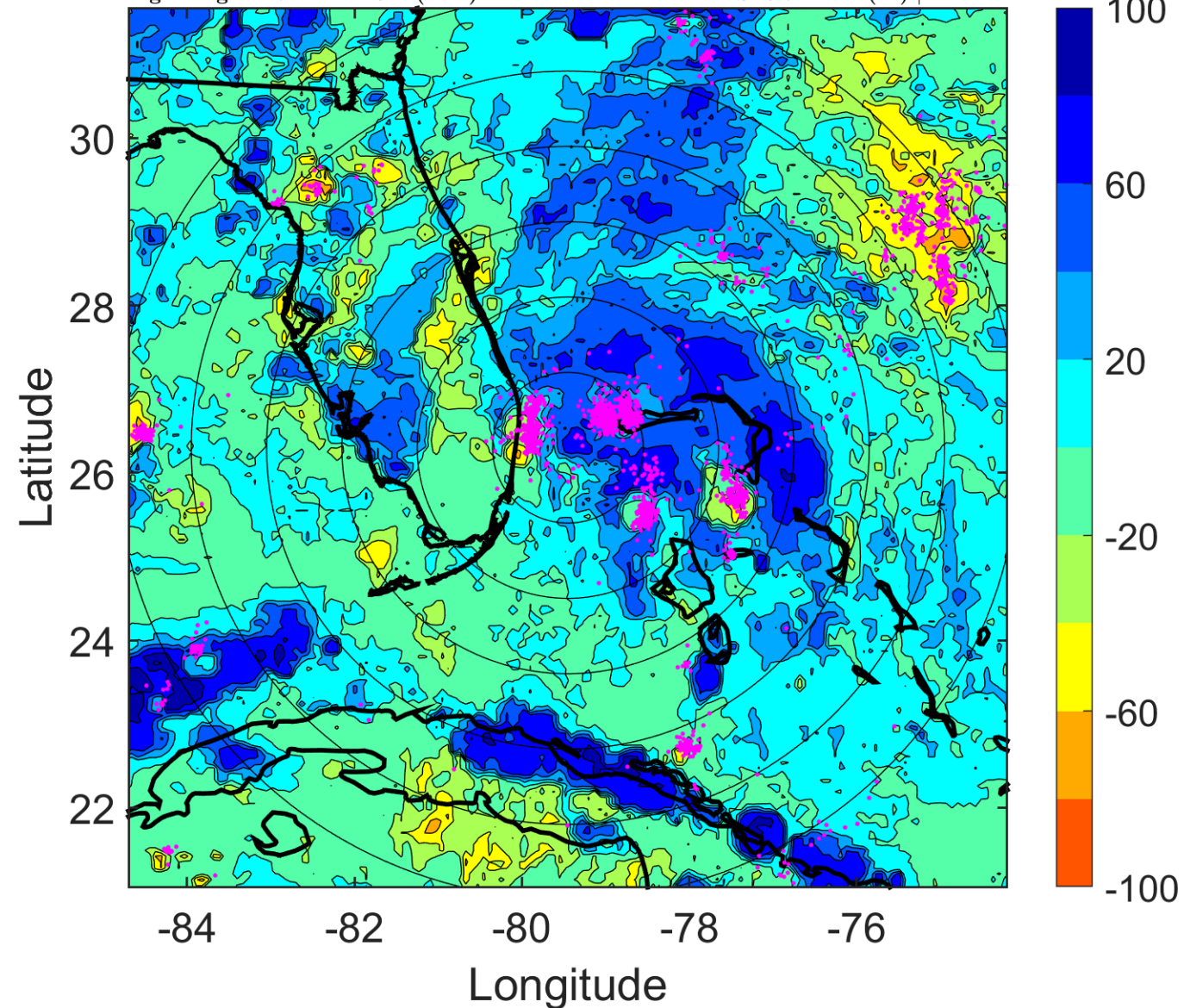
$\Delta$ t: 2019072303 (21.7 LT) - 2019072221 (15.7 LT)

Lightning: 21.7 LT  $\pm$  1.5 h (dots)

PT: SLCP | EA: QUASI

03L (THREE) | 27.5 kt TD

S: 5.7 m s<sup>-1</sup> (M) | H: 114°





### IR BT & Lightning

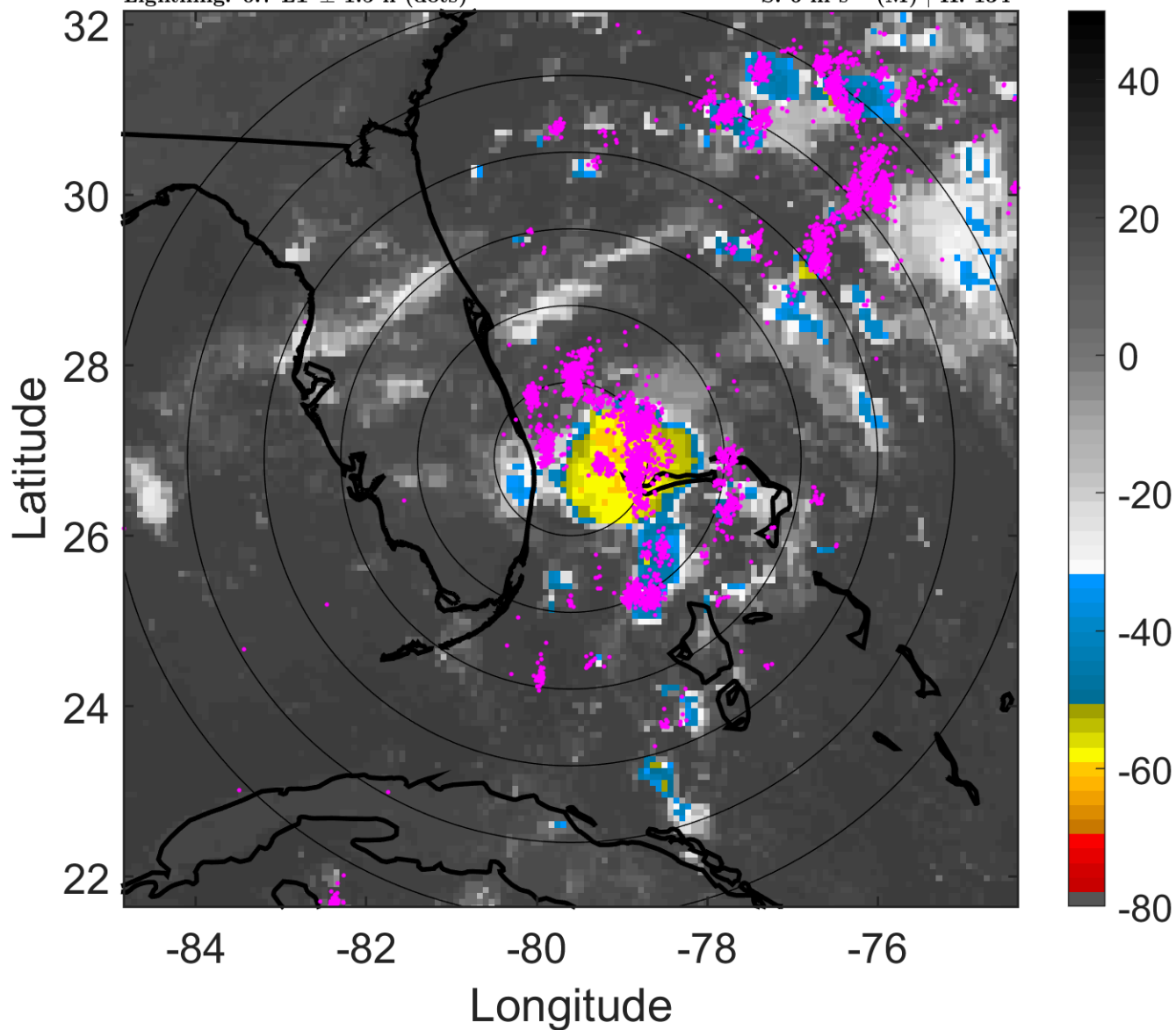
t: 2019072306 (0.7 LT)

Lightning: 0.7 LT  $\pm$  1.5 h (dots)

PT: SLCP | EA: QUASI

03L (THREE) | 30 kt TD

S: 6 m s<sup>-1</sup> (M) | H: 134°



### 6-h IR BT Differences & Lightning

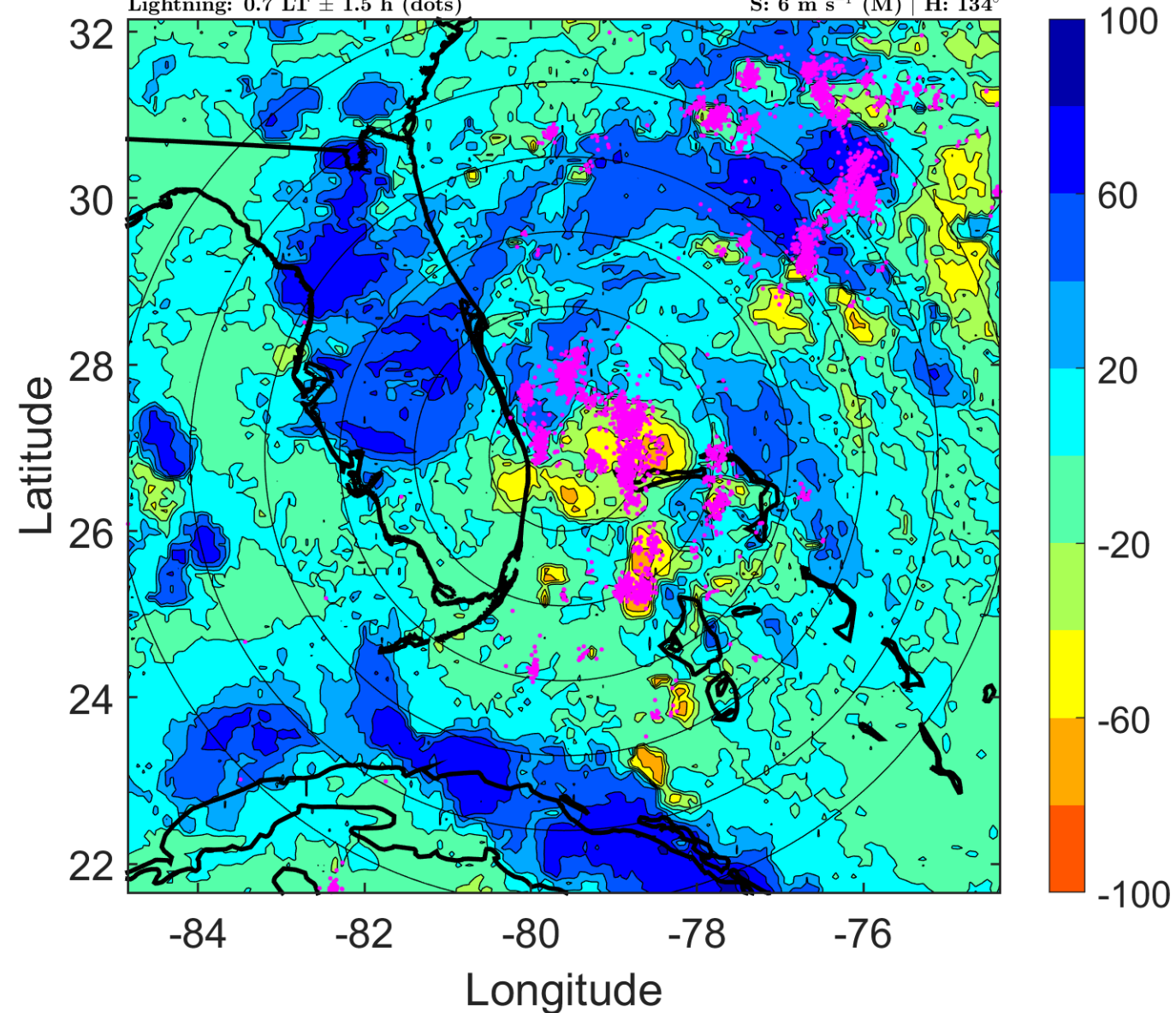
$\Delta$ t: 2019072306 (0.7 LT) - 2019072300 (18.7 LT)

Lightning: 0.7 LT  $\pm$  1.5 h (dots)

PT: SLCP | EA: QUASI

03L (THREE) | 30 kt TD

S: 6 m s<sup>-1</sup> (M) | H: 134°



### IR BT & Lightning

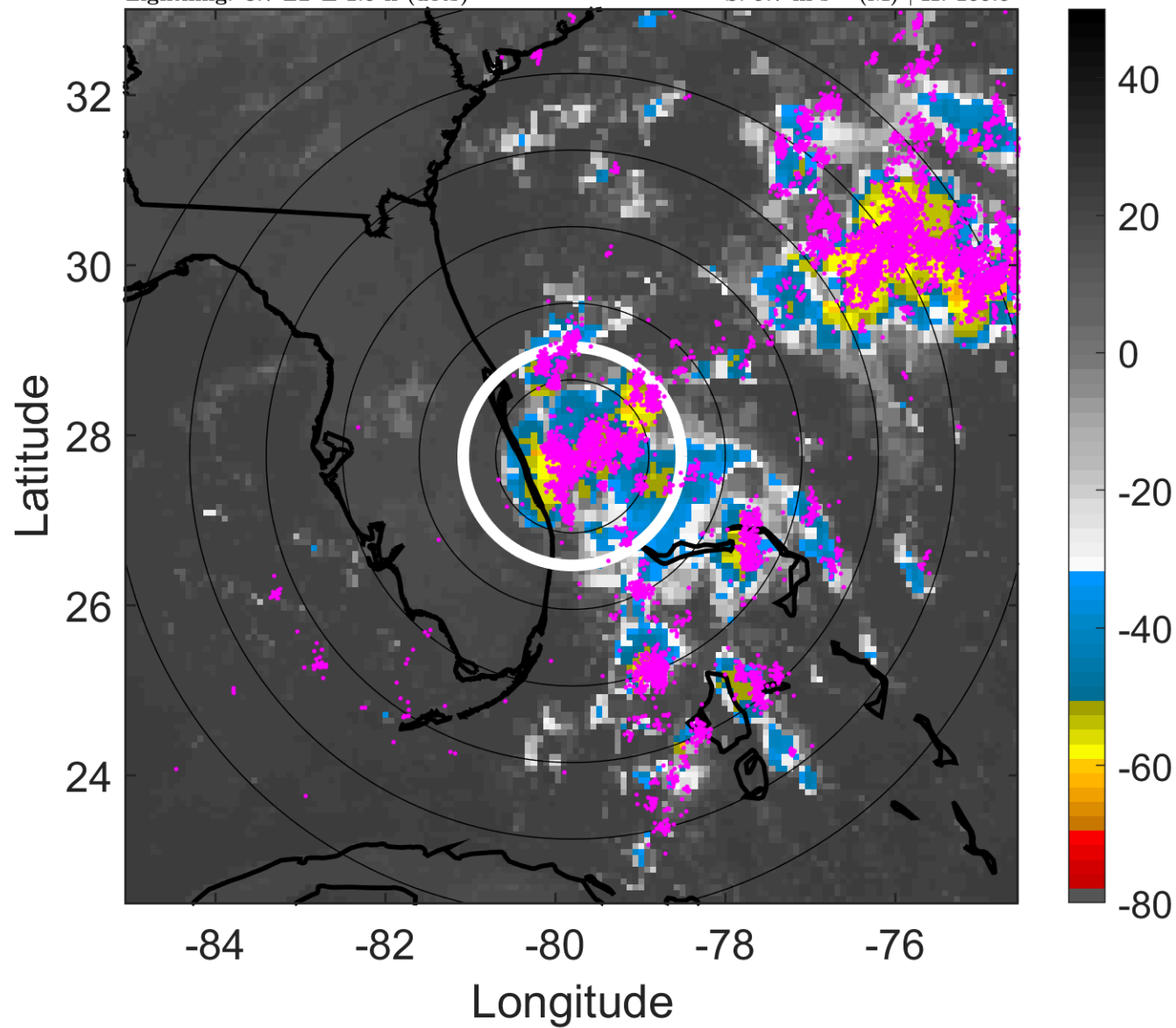
t: 2019072309 (3.7 LT)

Lightning: 3.7 LT  $\pm$  1.5 h (dots)

PT: SLCP | EA: QUASI

03L (THREE) | 30 kt TD

S: 5.7 m s<sup>-1</sup> (M) | H: 166.5°



### 6-h IR BT Differences & Lightning

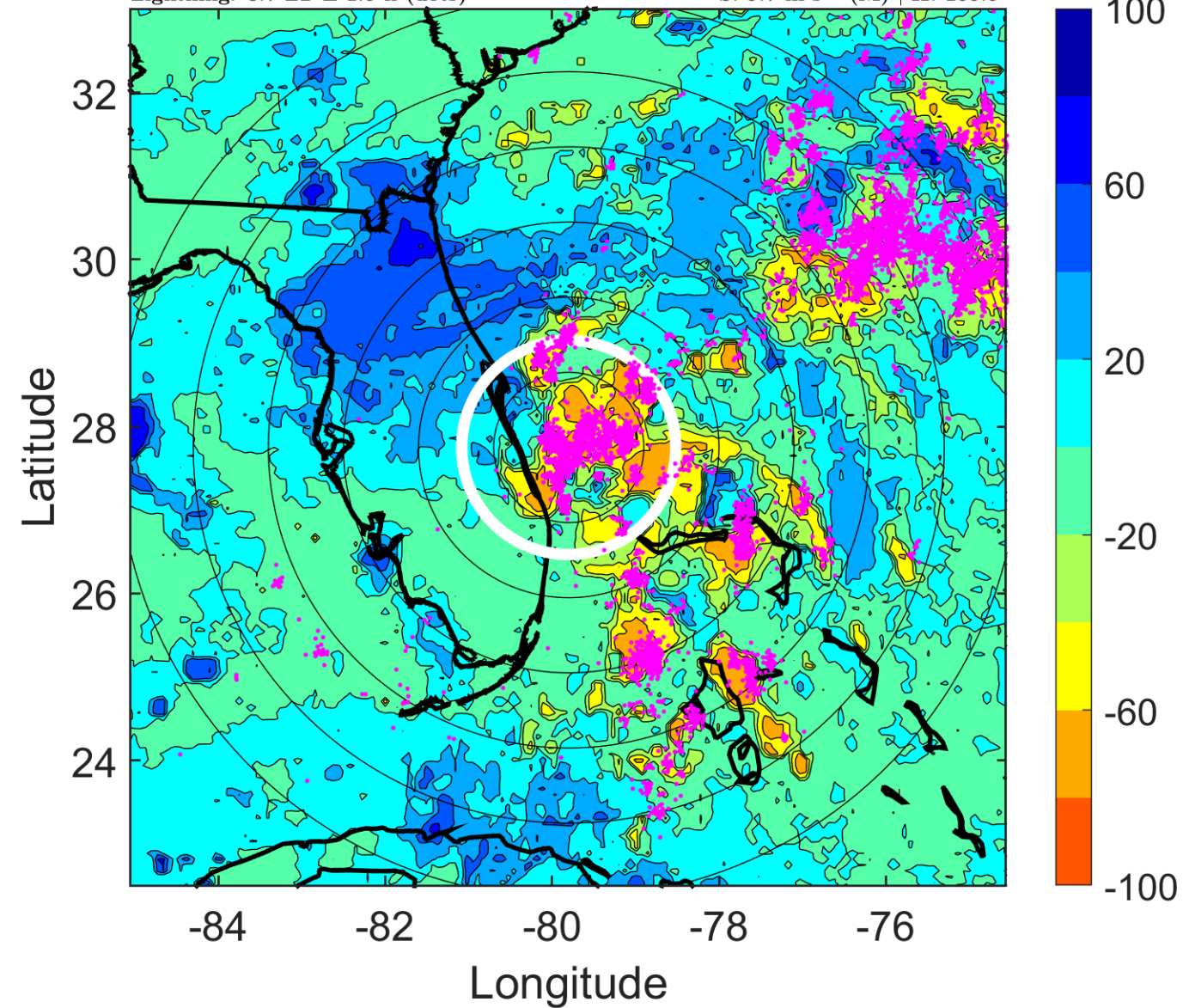
$\Delta$ t: 2019072309 (3.7 LT) - 2019072303 (21.7 LT)

Lightning: 3.7 LT  $\pm$  1.5 h (dots)

PT: SLCP | EA: QUASI

03L (THREE) | 30 kt TD

S: 5.7 m s<sup>-1</sup> (M) | H: 166.5°





### IR BT & Lightning

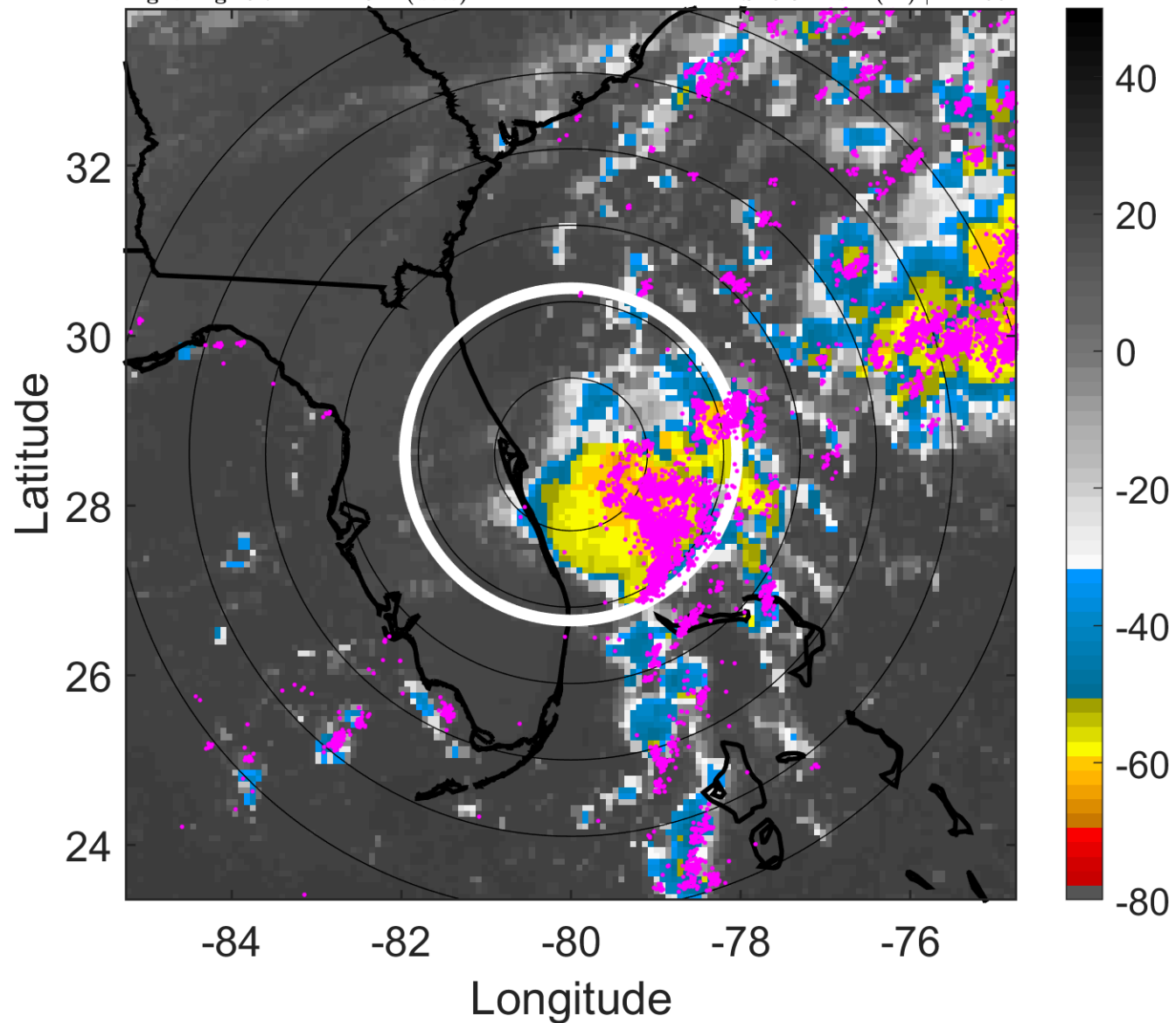
t: 2019072312 (6.7 LT)

Lightning: 6.7 LT  $\pm$  1.5 h (dots)

PT: SLCP | EA: QUASI

03L (THREE) | 30 kt TD

S: 5.3 m s<sup>-1</sup> (M) | H: 199°



### 6-h IR BT Differences & Lightning

$\Delta$ t: 2019072312 (6.7 LT) - 2019072306 (0.7 LT)

Lightning: 6.7 LT  $\pm$  1.5 h (dots)

PT: SLCP | EA: QUASI

03L (THREE) | 30 kt TD

S: 5.3 m s<sup>-1</sup> (M) | H: 199°

