

IR BT & Lightning

t: 2022100418 (16 LT)

Lightning: 16 LT \pm 1.5 h (dots)

PT: SLWP | EA: INACT

12L (TWELVE) | 30 kt TD

S: 2.4 m s⁻¹ (L) | H: 23°

6-h IR BT Differences & Lightning

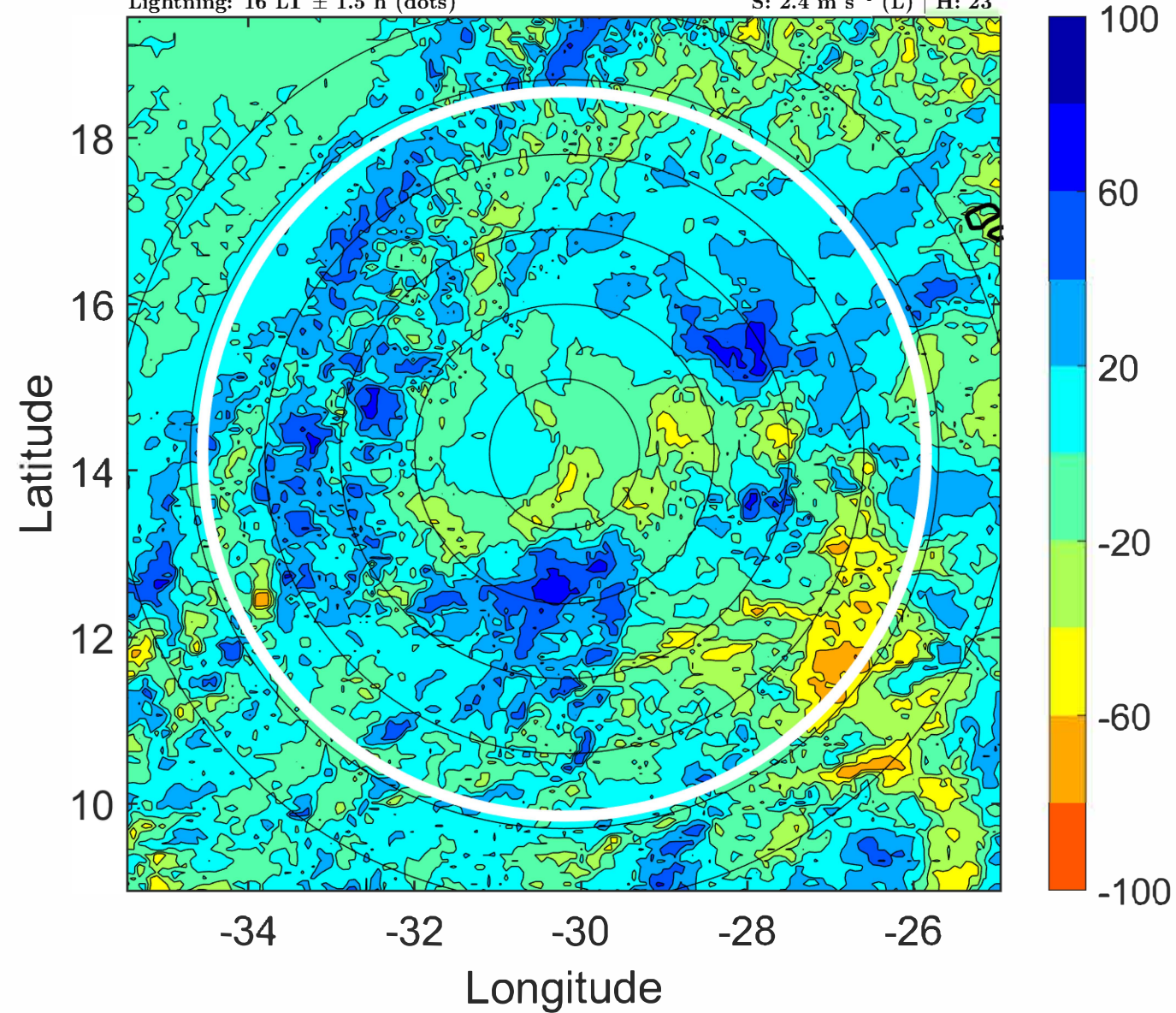
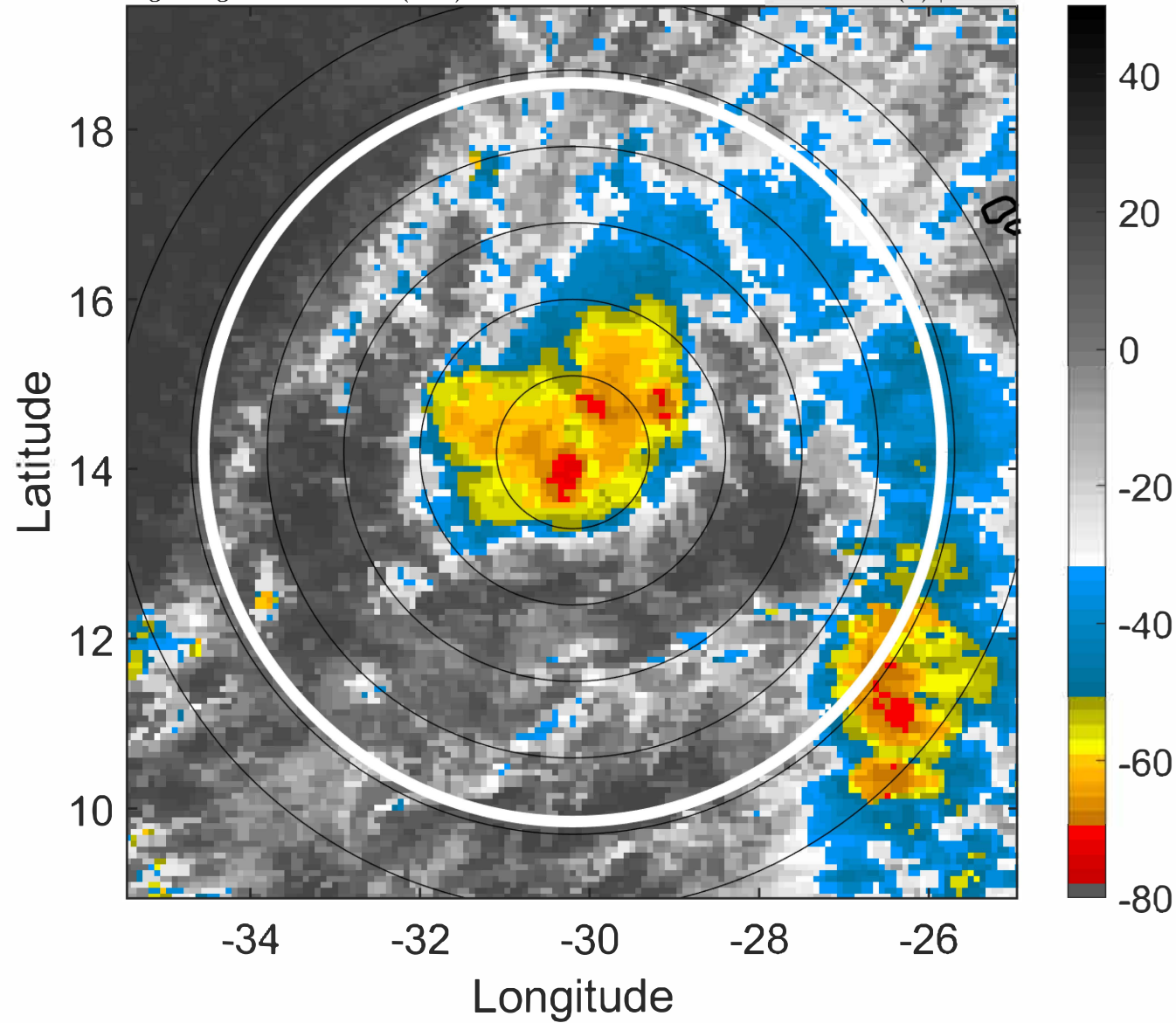
Δ t: 2022100418 (16 LT) - 2022100412 (10 LT)

Lightning: 16 LT \pm 1.5 h (dots)

PT: SLWP | EA: INACT

12L (TWELVE) | 30 kt TD

S: 2.4 m s⁻¹ (L) | H: 23°



IR BT & Lightning

t: 2022100421 (19 LT)

Lightning: 19 LT \pm 1.5 h (dots)

PT: SLWP | EA: INACT

12L (TWELVE) | 30 kt TD

S: 3.1 m s⁻¹ (L) | H: 31.5°

6-h IR BT Differences & Lightning

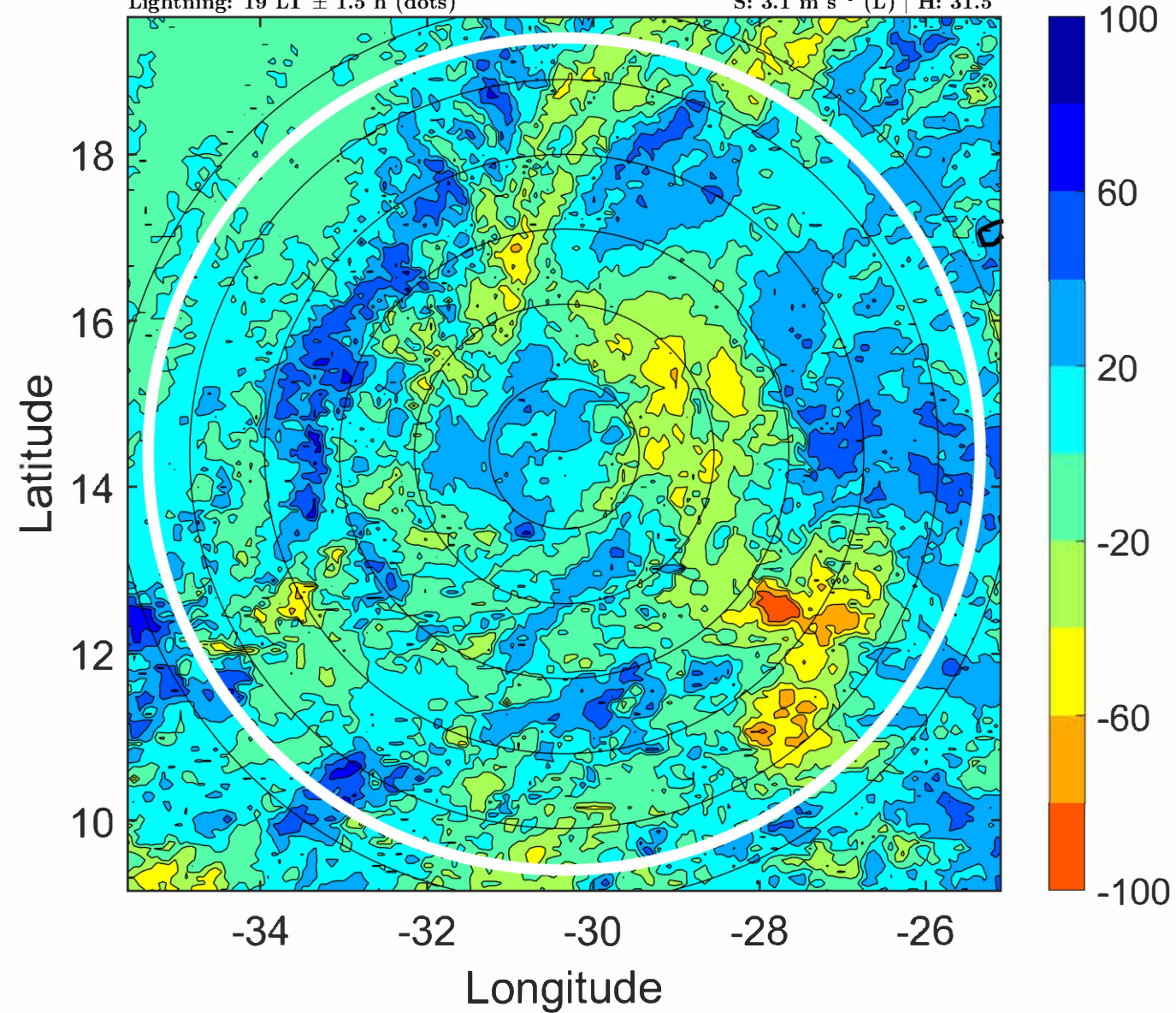
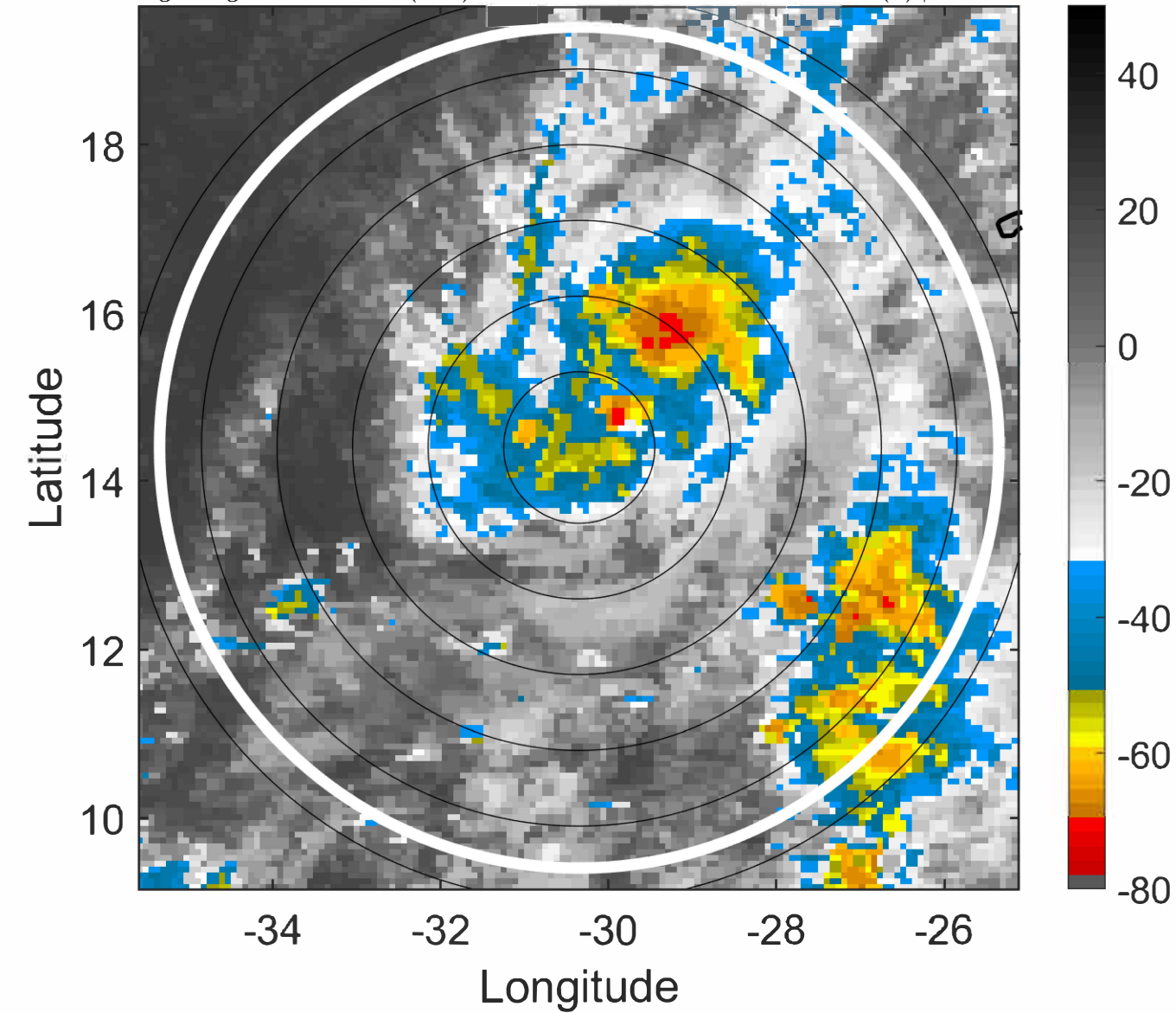
Δ t: 2022100421 (19 LT) - 2022100415 (13 LT)

Lightning: 19 LT \pm 1.5 h (dots)

PT: SLWP | EA: INACT

12L (TWELVE) | 30 kt TD

S: 3.1 m s⁻¹ (L) | H: 31.5°



IR BT & Lightning

t: 2022100500 (22 LT)

Lightning: 22 LT \pm 1.5 h (dots)

PT: SLWP | EA: INACT

12L (TWELVE) | 30 kt TD

S: 3.9 m s⁻¹ (L) | H: 40°

6-h IR BT Differences & Lightning

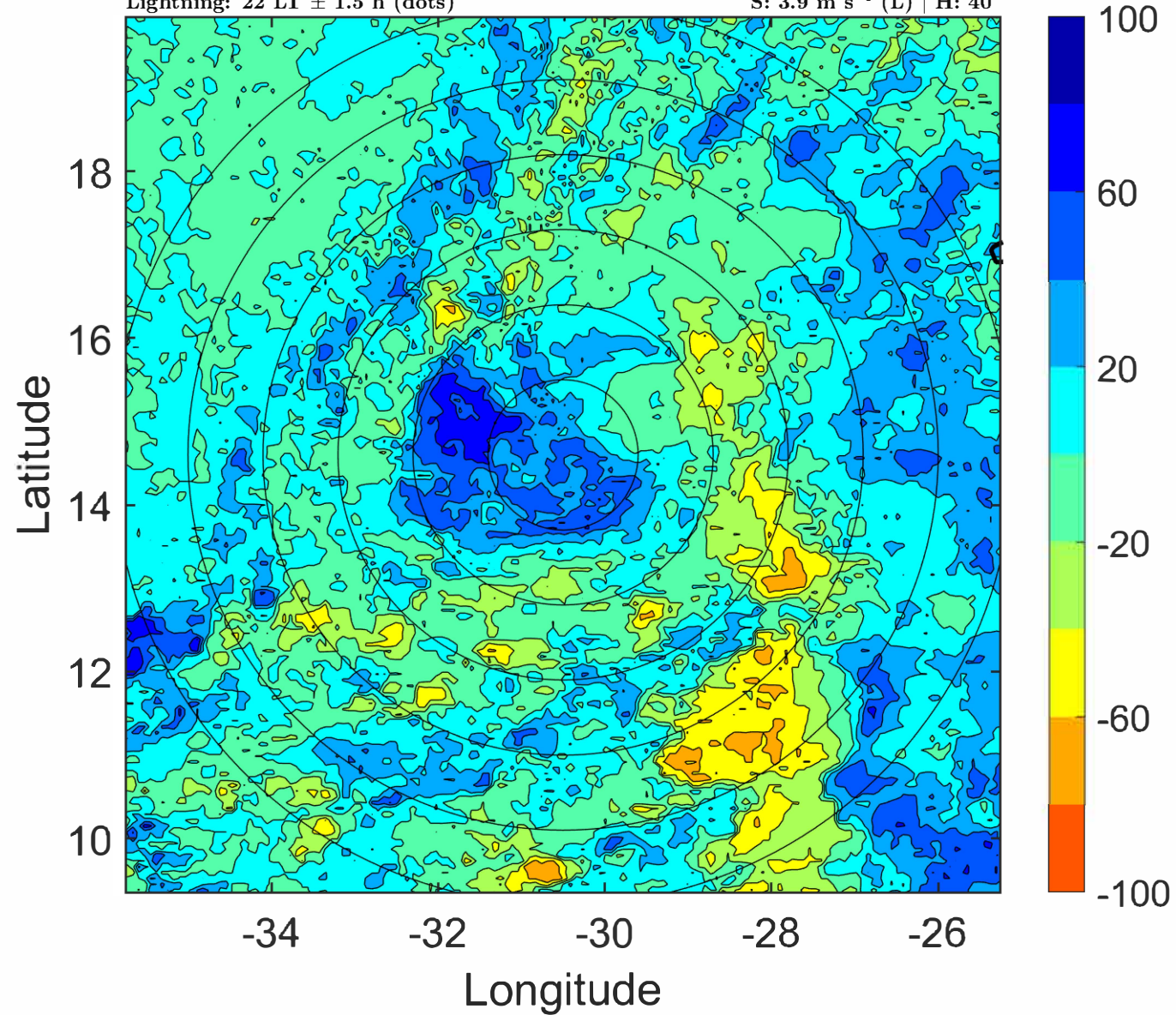
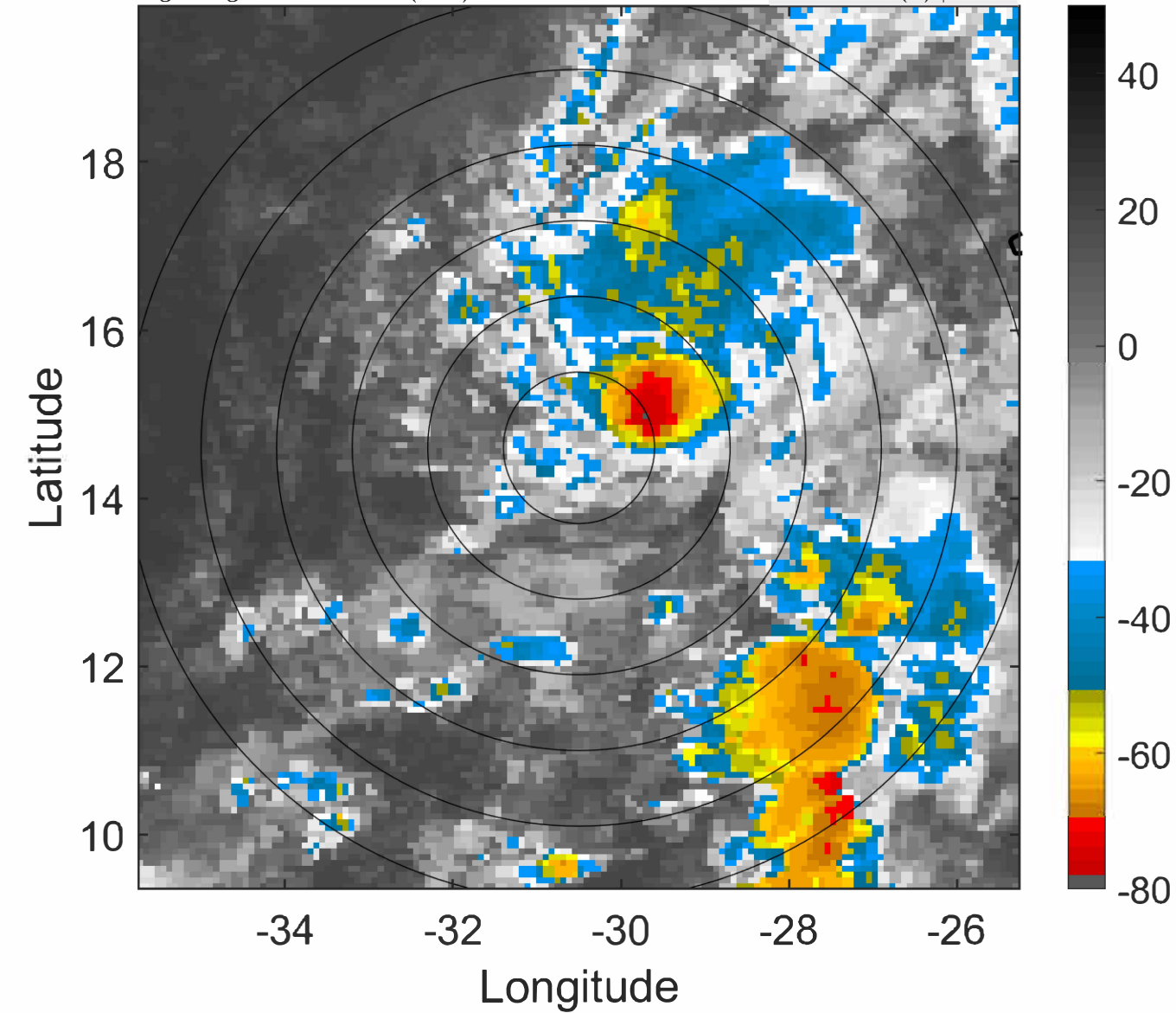
Δ t: 2022100500 (22 LT) - 2022100418 (16 LT)

Lightning: 22 LT \pm 1.5 h (dots)

PT: SLWP | EA: INACT

12L (TWELVE) | 30 kt TD

S: 3.9 m s⁻¹ (L) | H: 40°



IR BT & Lightning

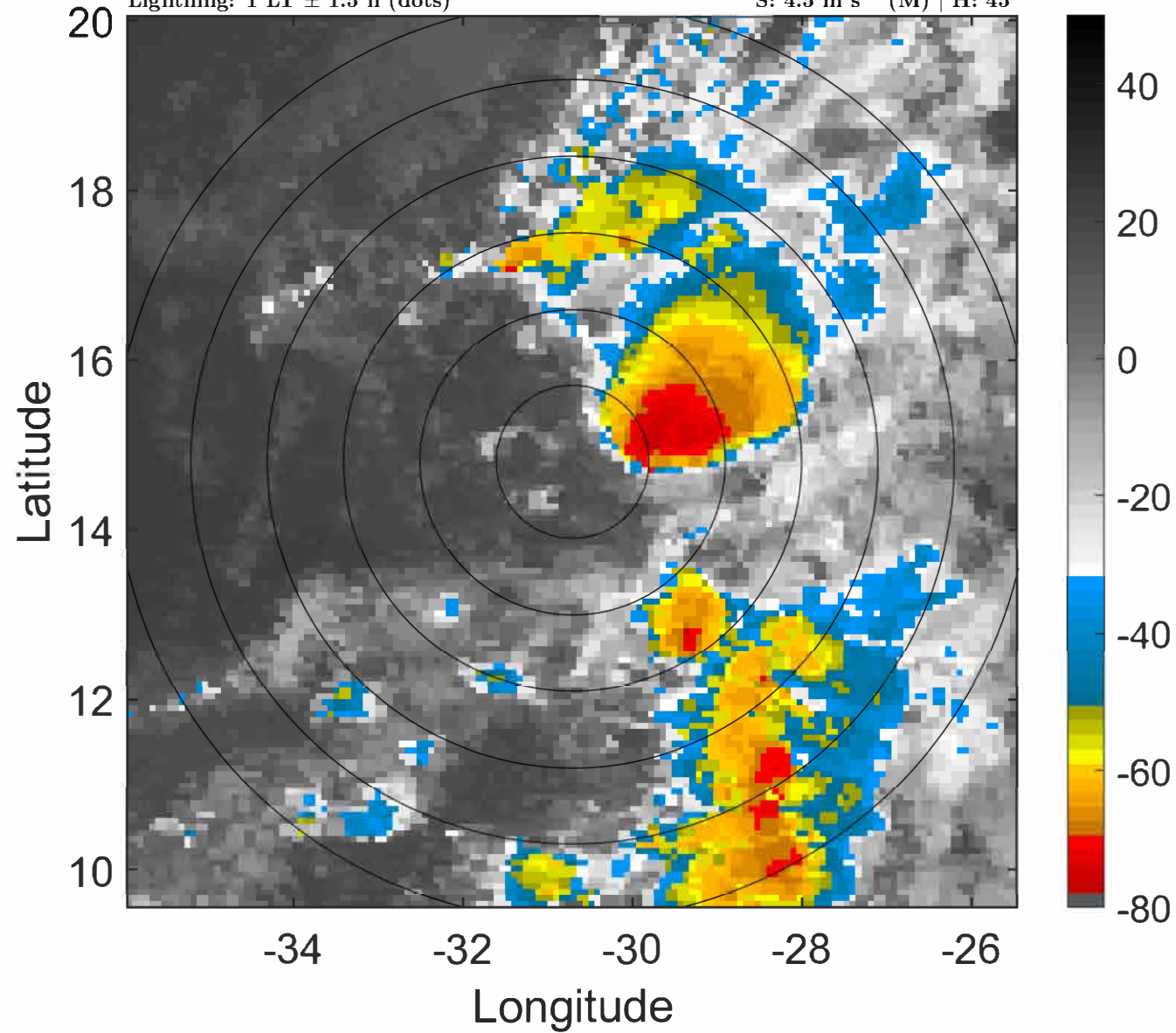
t: 2022100503 (1 LT)

Lightning: 1 LT \pm 1.5 h (dots)

PT: SLCP | EA: INACT

12L (TWELVE) | 30 kt TD

S: 4.5 m s⁻¹ (M) | H: 45°



6-h IR BT Differences & Lightning

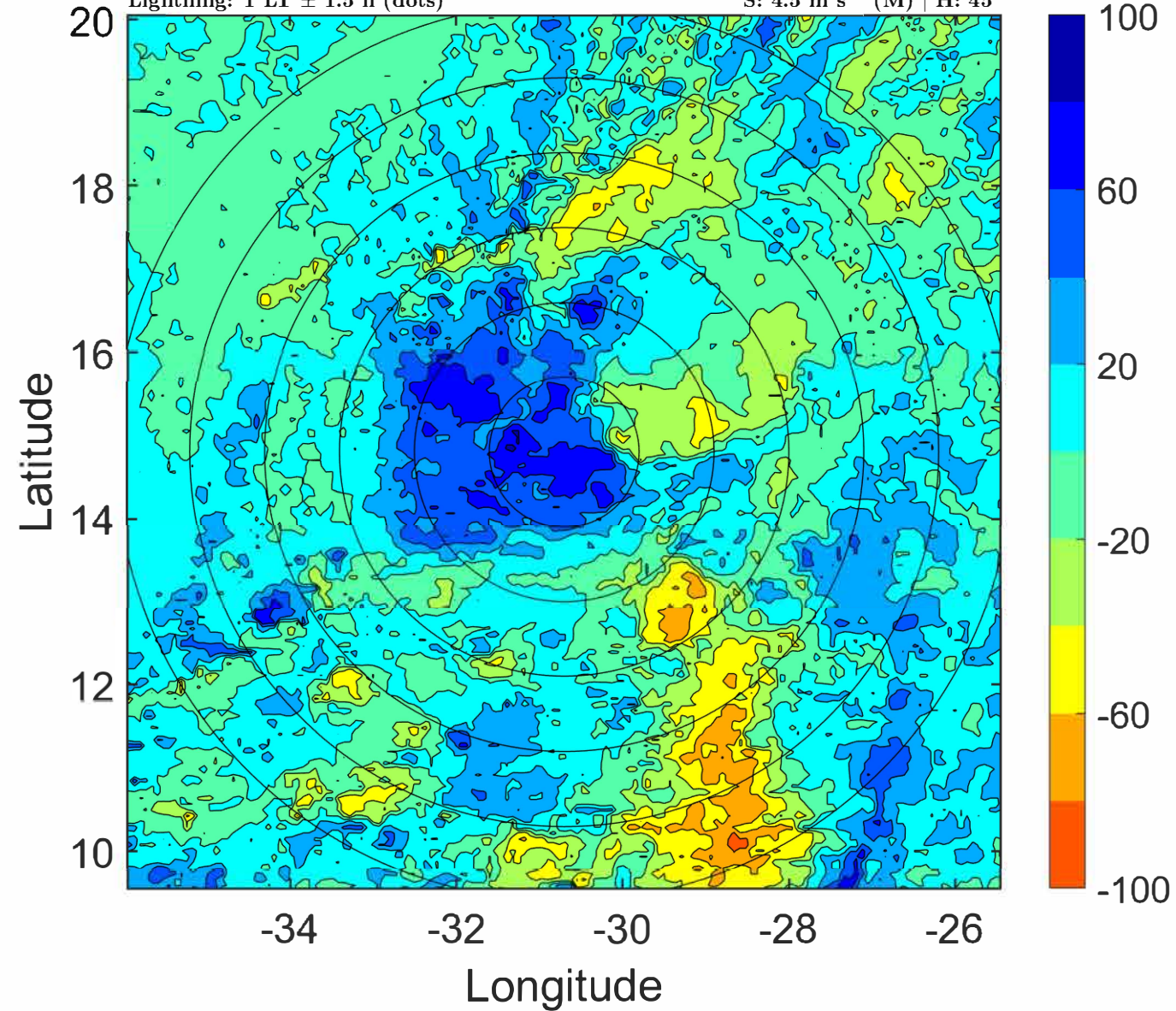
Δ t: 2022100503 (1 LT) - 2022100421 (19 LT)

Lightning: 1 LT \pm 1.5 h (dots)

PT: SLCP | EA: INACT

12L (TWELVE) | 30 kt TD

S: 4.5 m s⁻¹ (M) | H: 45°



IR BT & Lightning

t: 2022100506 (3.9 LT)

Lightning: 3.9 LT \pm 1.5 h (dots)

PT: SLCP | EA: INACT

12L (TWELVE) | 30 kt TD

S: 5.1 m s⁻¹ (M) | H: 50°

6-h IR BT Differences & Lightning

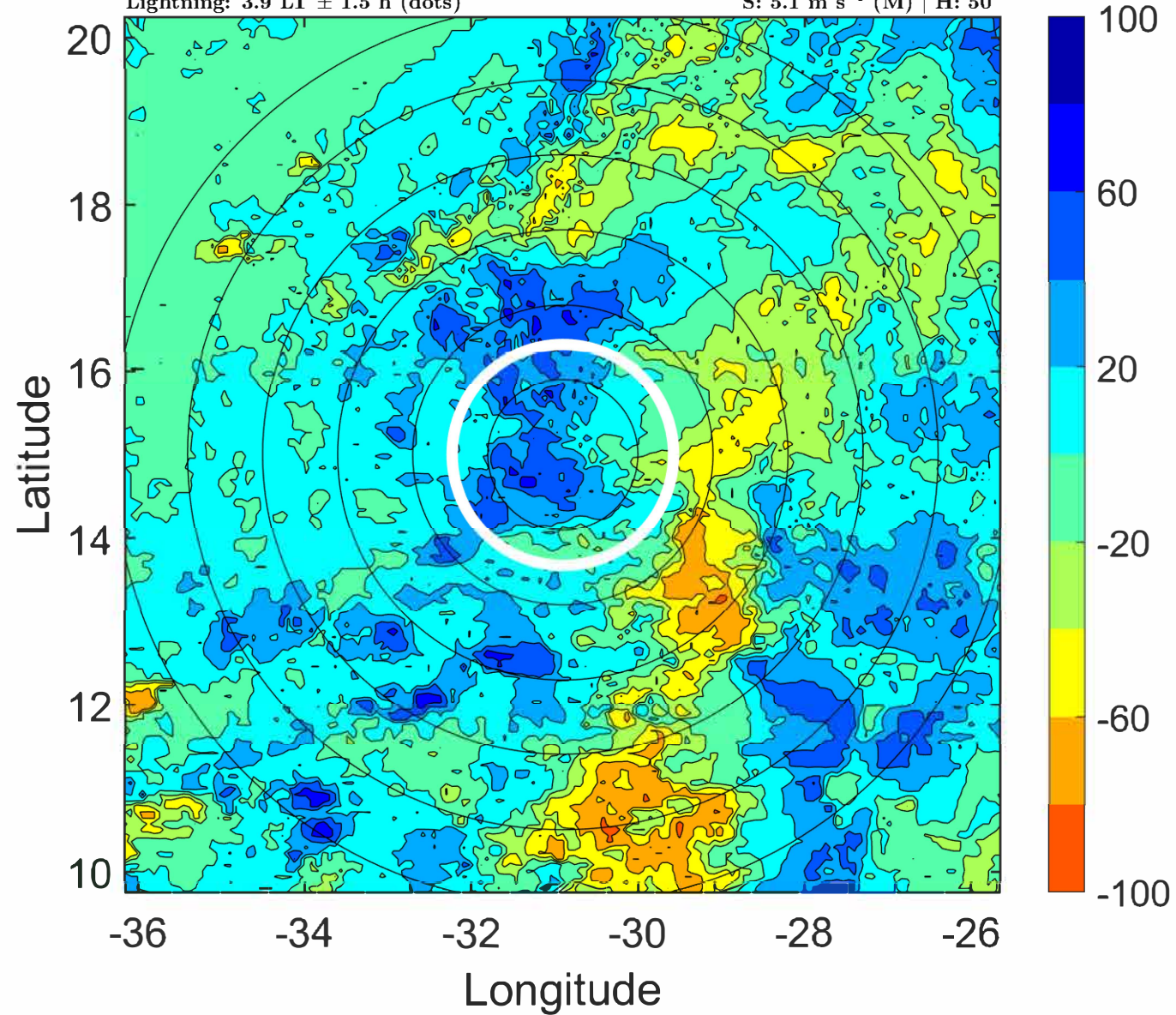
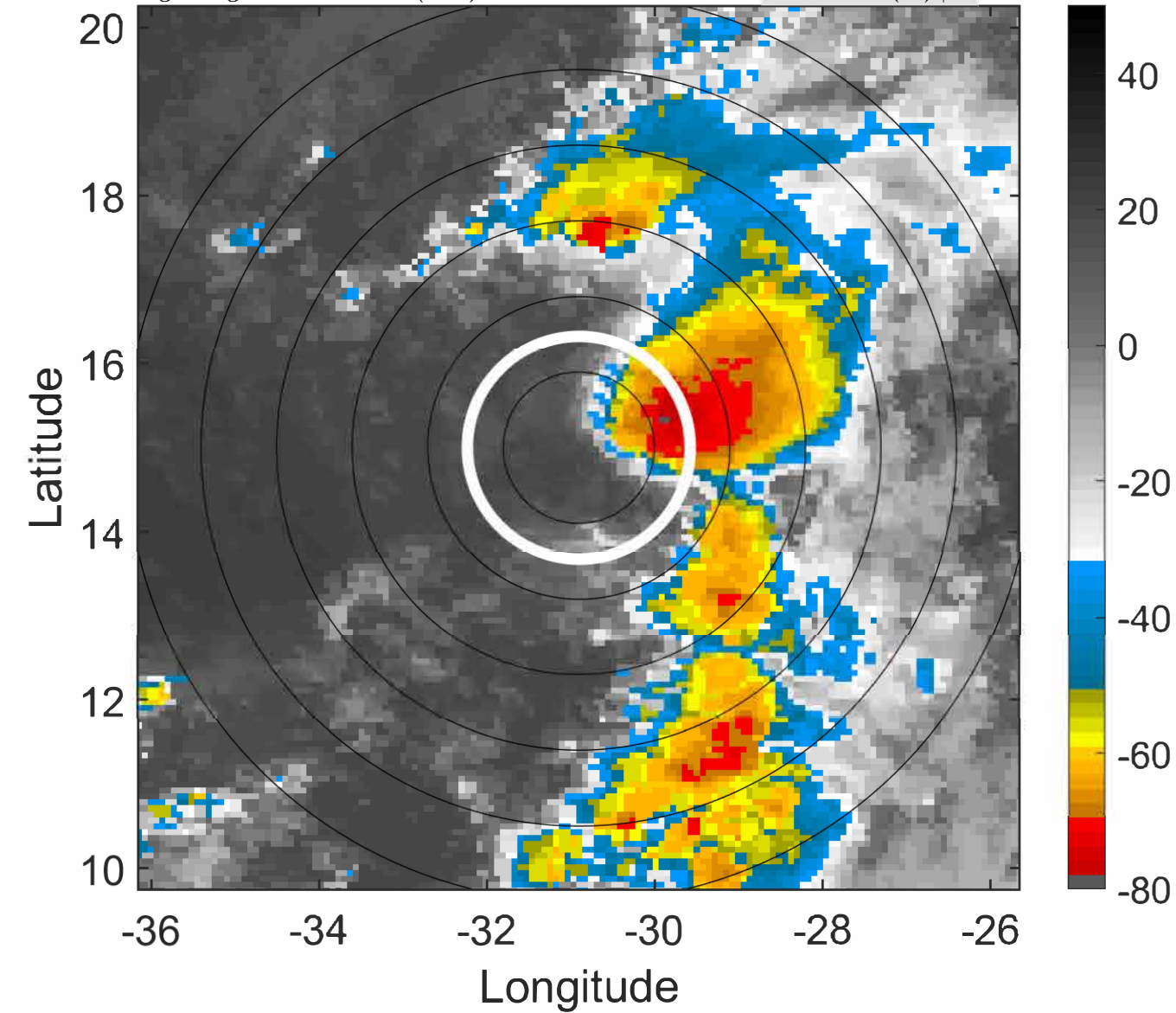
Δ t: 2022100506 (3.9 LT) - 2022100500 (22 LT)

Lightning: 3.9 LT \pm 1.5 h (dots)

PT: SLCP | EA: INACT

12L (TWELVE) | 30 kt TD

S: 5.1 m s⁻¹ (M) | H: 50°



IR BT & Lightning

t: 2022100509 (6.9 LT)

Lightning: 6.9 LT \pm 1.5 h (dots)

PT: SLCP | EA: INACT

12L (TWELVE) | 30 kt TD

S: 5.4 m s⁻¹ (M) | H: 57.5°

6-h IR BT Differences & Lightning

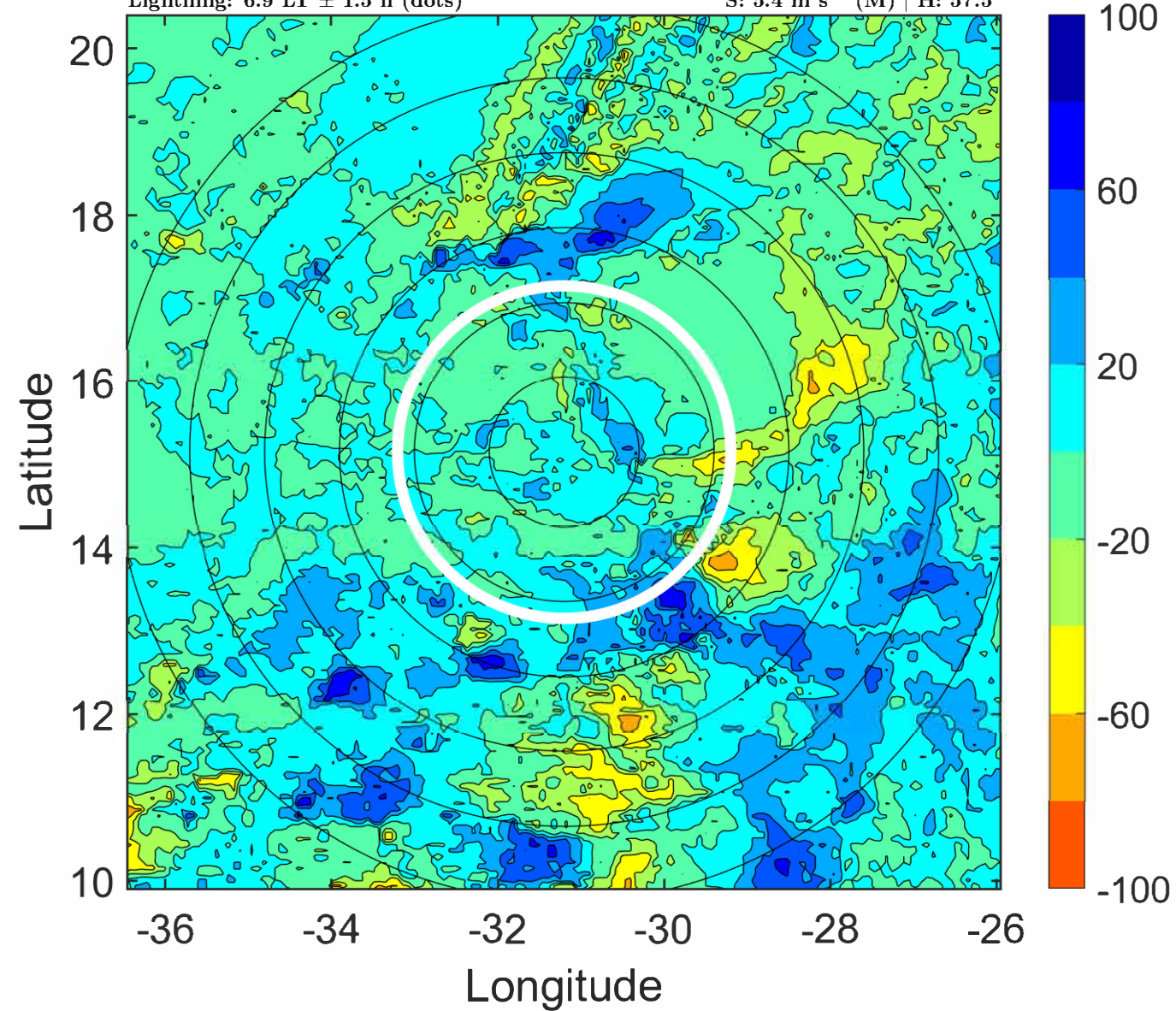
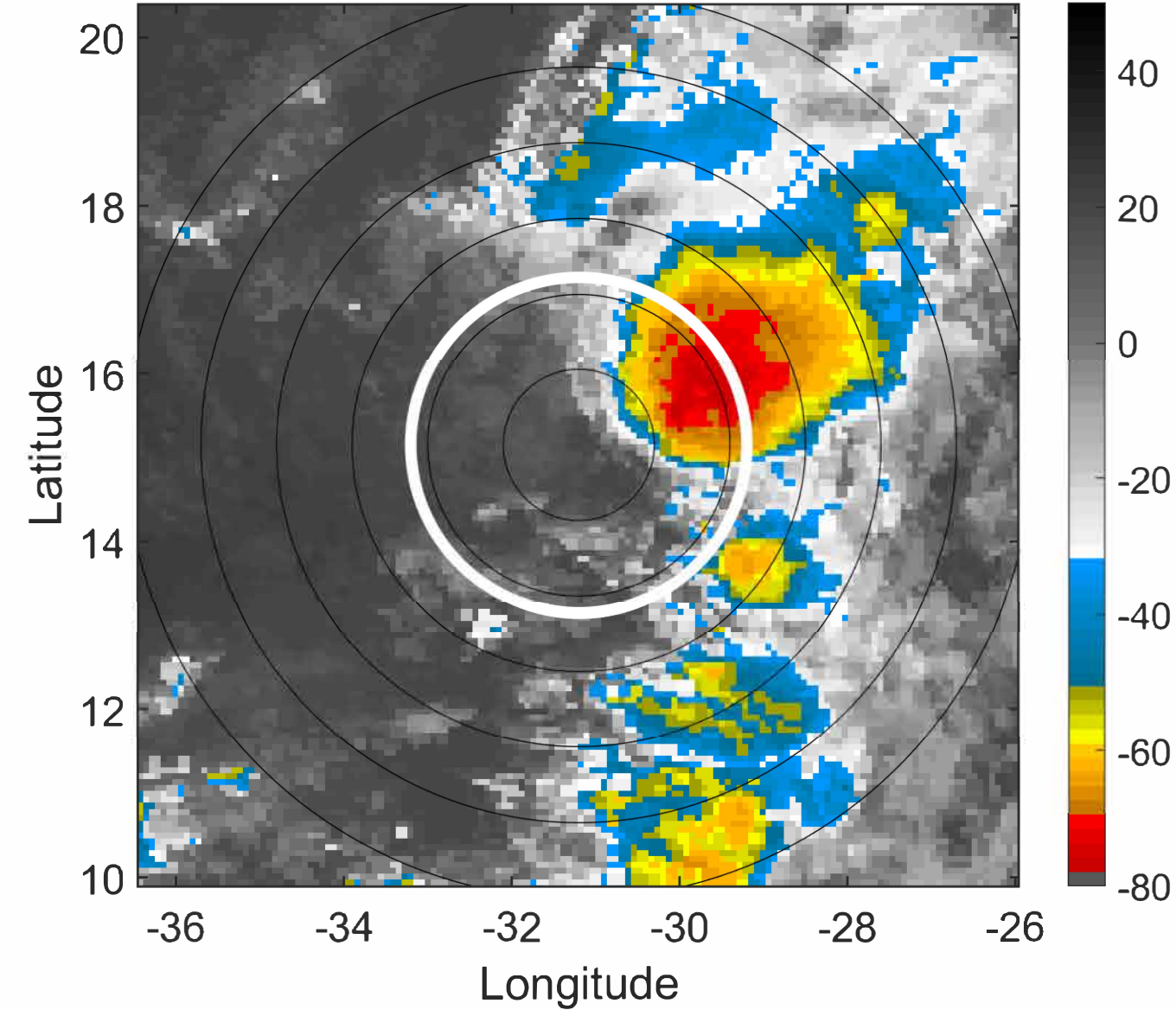
Δ t: 2022100509 (6.9 LT) - 2022100503 (1 LT)

Lightning: 6.9 LT \pm 1.5 h (dots)

PT: SLCP | EA: INACT

12L (TWELVE) | 30 kt TD

S: 5.4 m s⁻¹ (M) | H: 57.5°



IR BT & Lightning

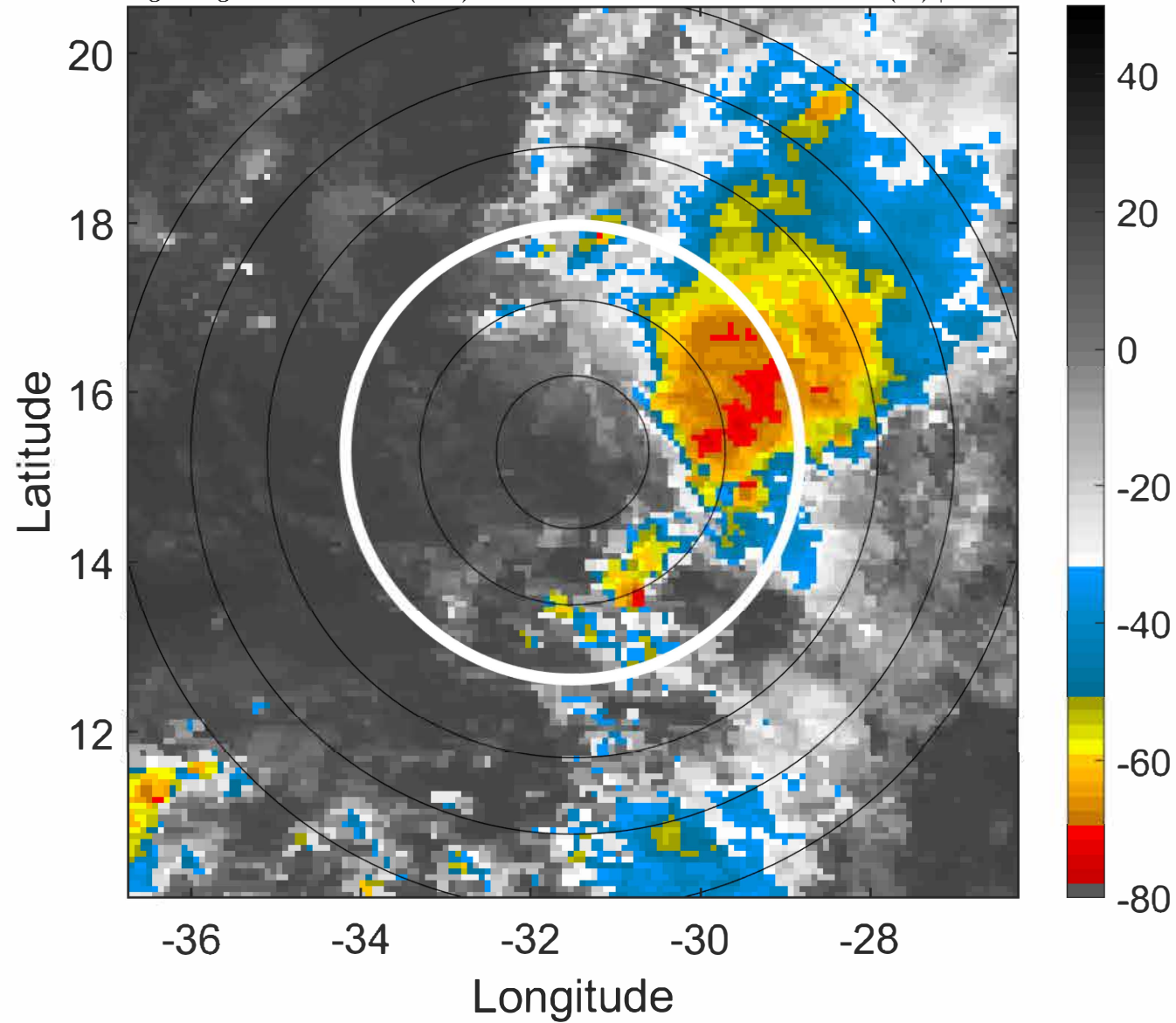
t: 2022100512 (9.9 LT)

Lightning: 9.9 LT \pm 1.5 h (dots)

PT: SLCP | EA: INACT

12L (TWELVE) | 30 kt TD

S: 5.8 m s⁻¹ (M) | H: 65°



6-h IR BT Differences & Lightning

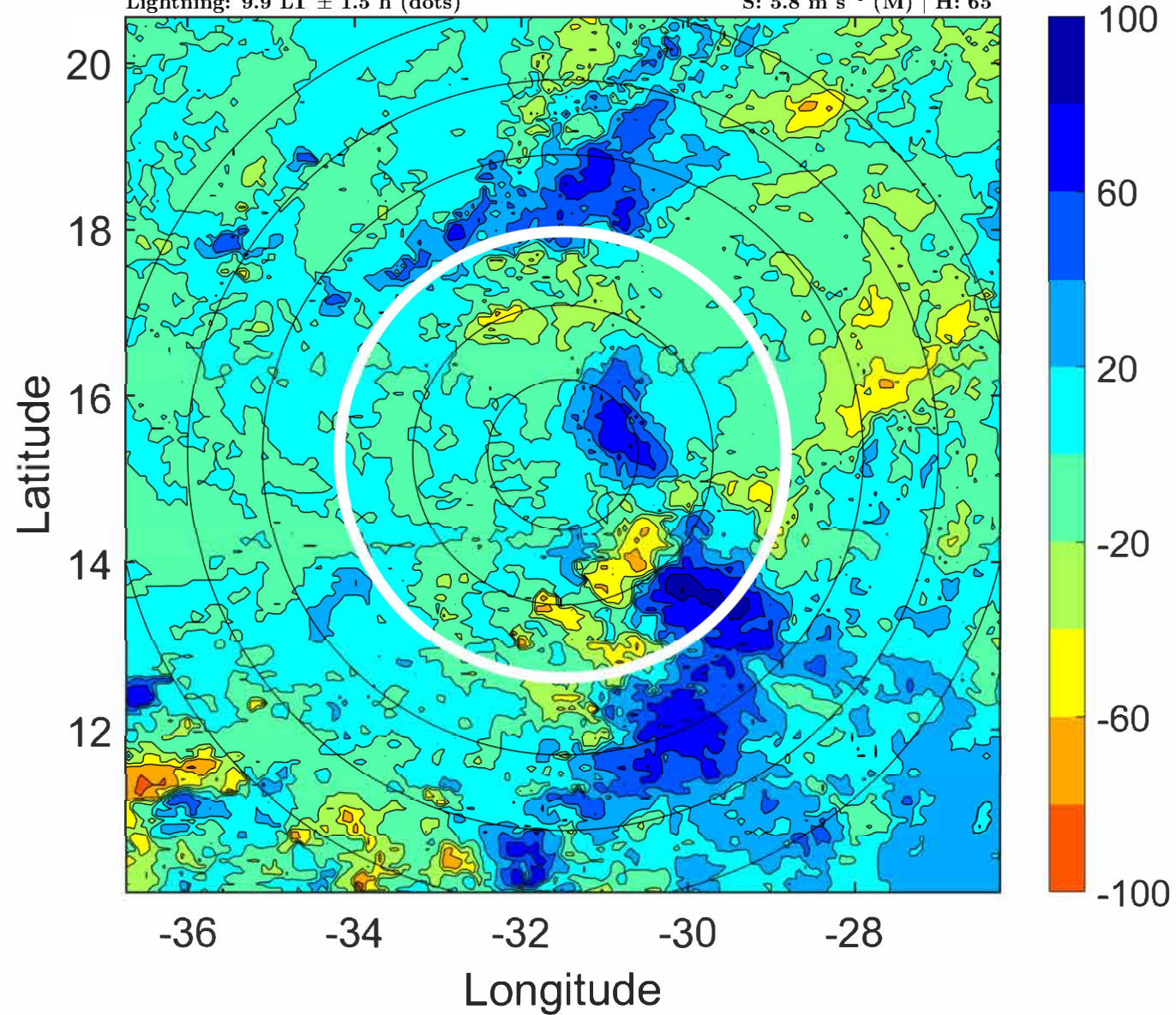
Δ t: 2022100512 (9.9 LT) - 2022100506 (3.9 LT)

Lightning: 9.9 LT \pm 1.5 h (dots)

PT: SLCP | EA: INACT

12L (TWELVE) | 30 kt TD

S: 5.8 m s⁻¹ (M) | H: 65°



IR BT & Lightning

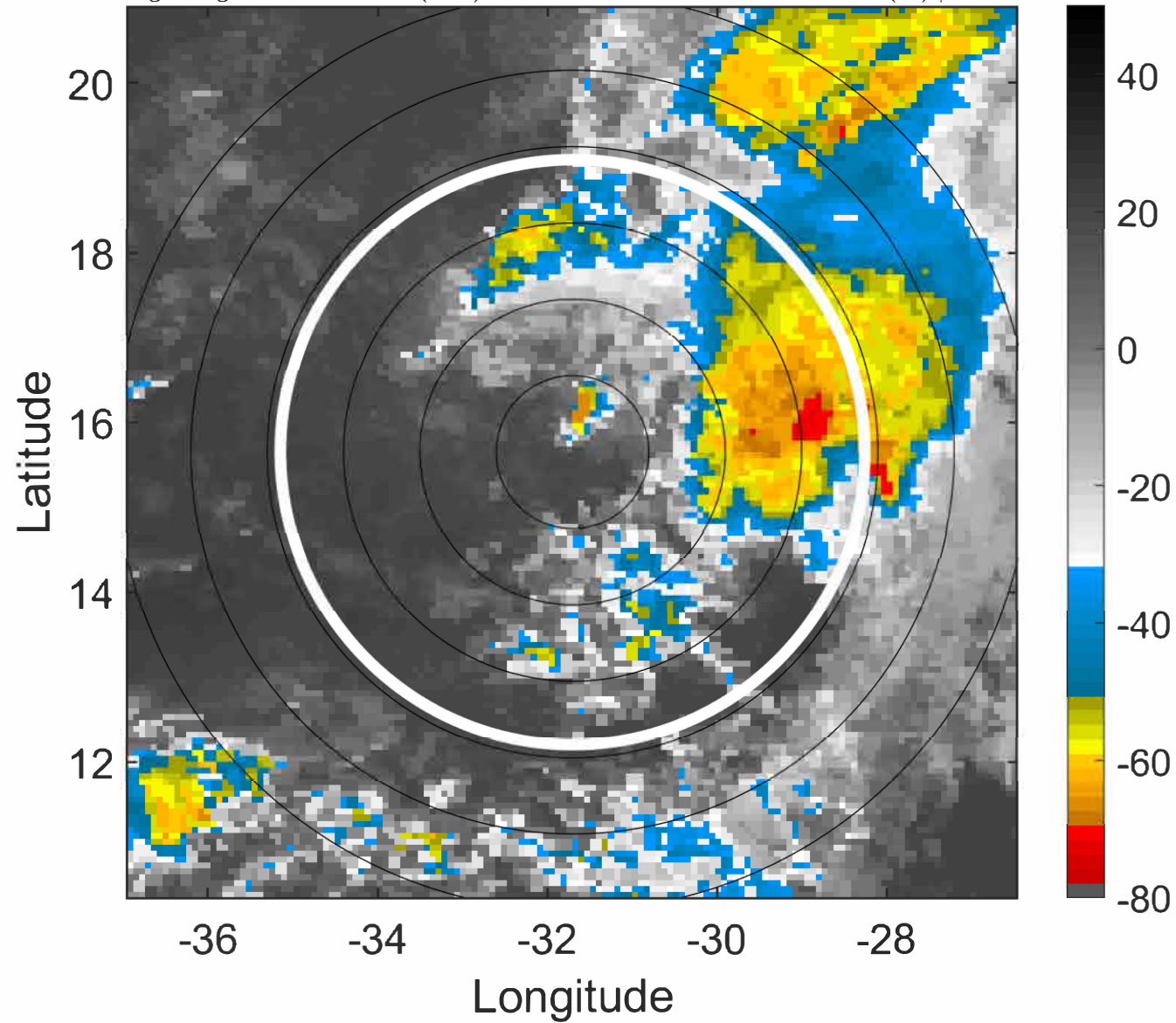
t: 2022100515 (12.9 LT)

Lightning: 12.9 LT \pm 1.5 h (dots)

PT: SLCP | EA: INACT

12L (TWELVE) | 30 kt TD

S: 6 m s⁻¹ (M) | H: 64°



6-h IR BT Differences & Lightning

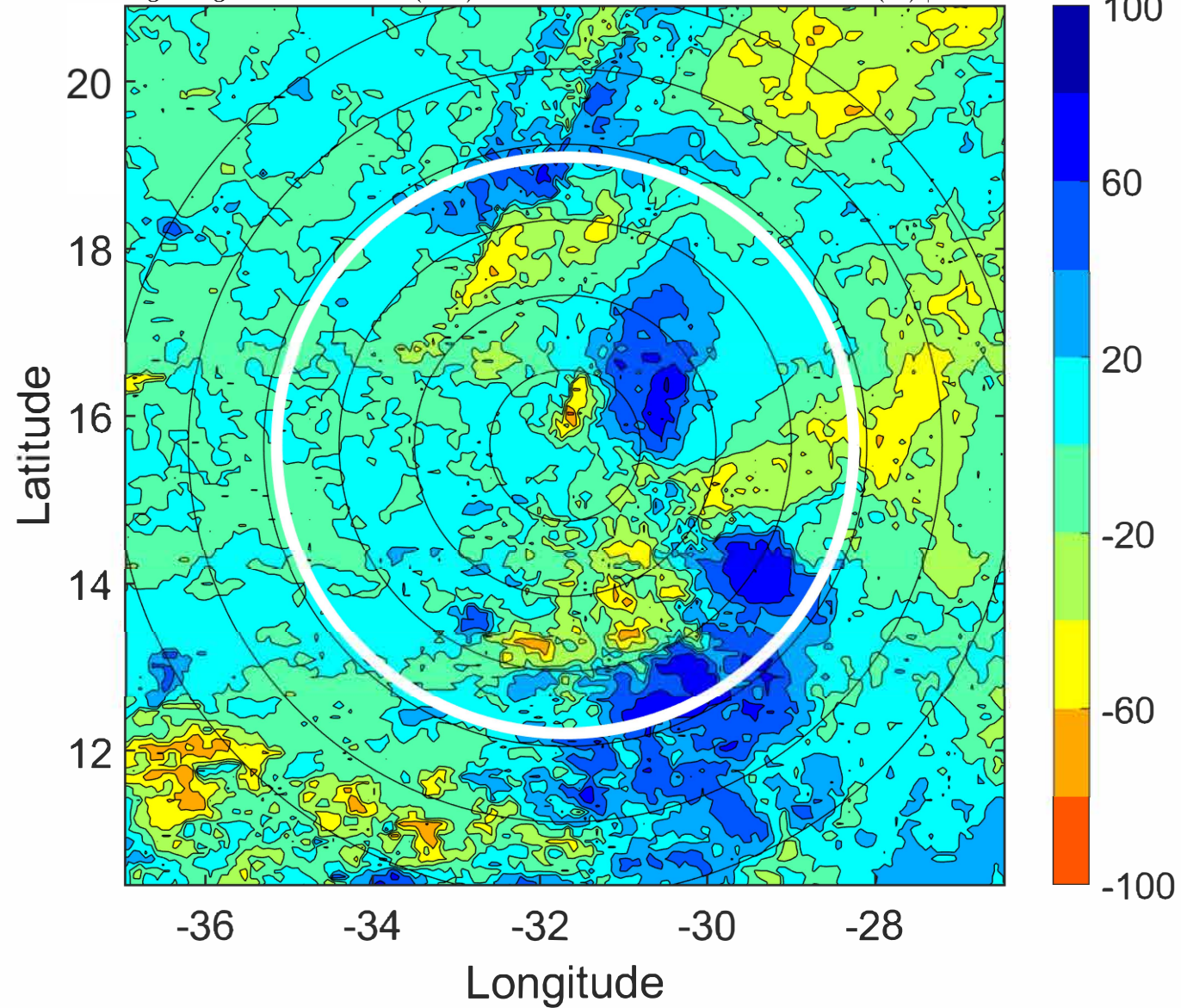
Δ t: 2022100515 (12.9 LT) - 2022100509 (6.9 LT)

Lightning: 12.9 LT \pm 1.5 h (dots)

PT: SLCP | EA: INACT

12L (TWELVE) | 30 kt TD

S: 6 m s⁻¹ (M) | H: 64°



IR BT & Lightning

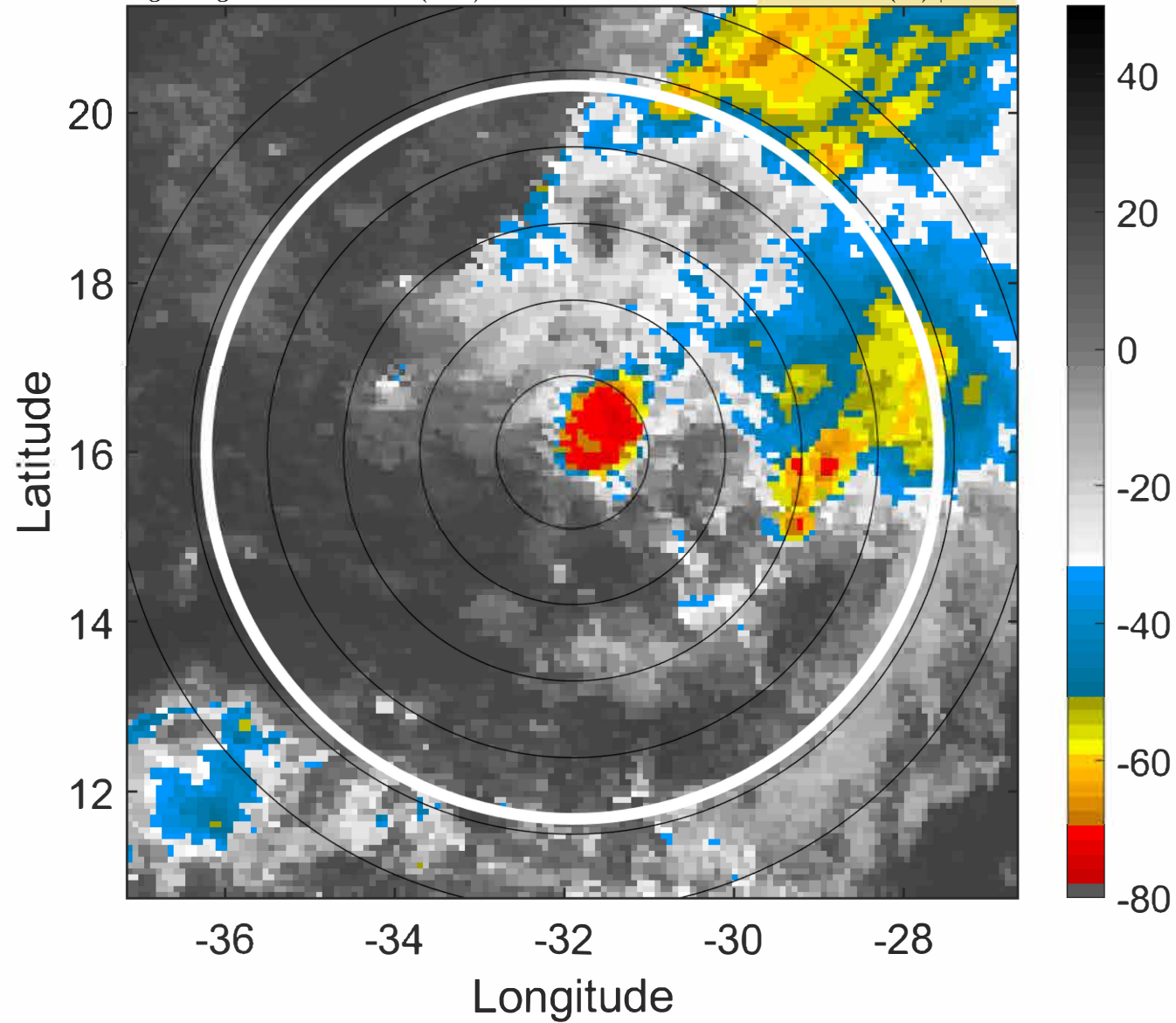
t: 2022100518 (15.9 LT)

Lightning: 15.9 LT \pm 1.5 h (dots)

PT: SLCP | EA: INACT

12L (TWELVE) | 30 kt TD

S: 6.3 m s⁻¹ (M) | H: 63°



6-h IR BT Differences & Lightning

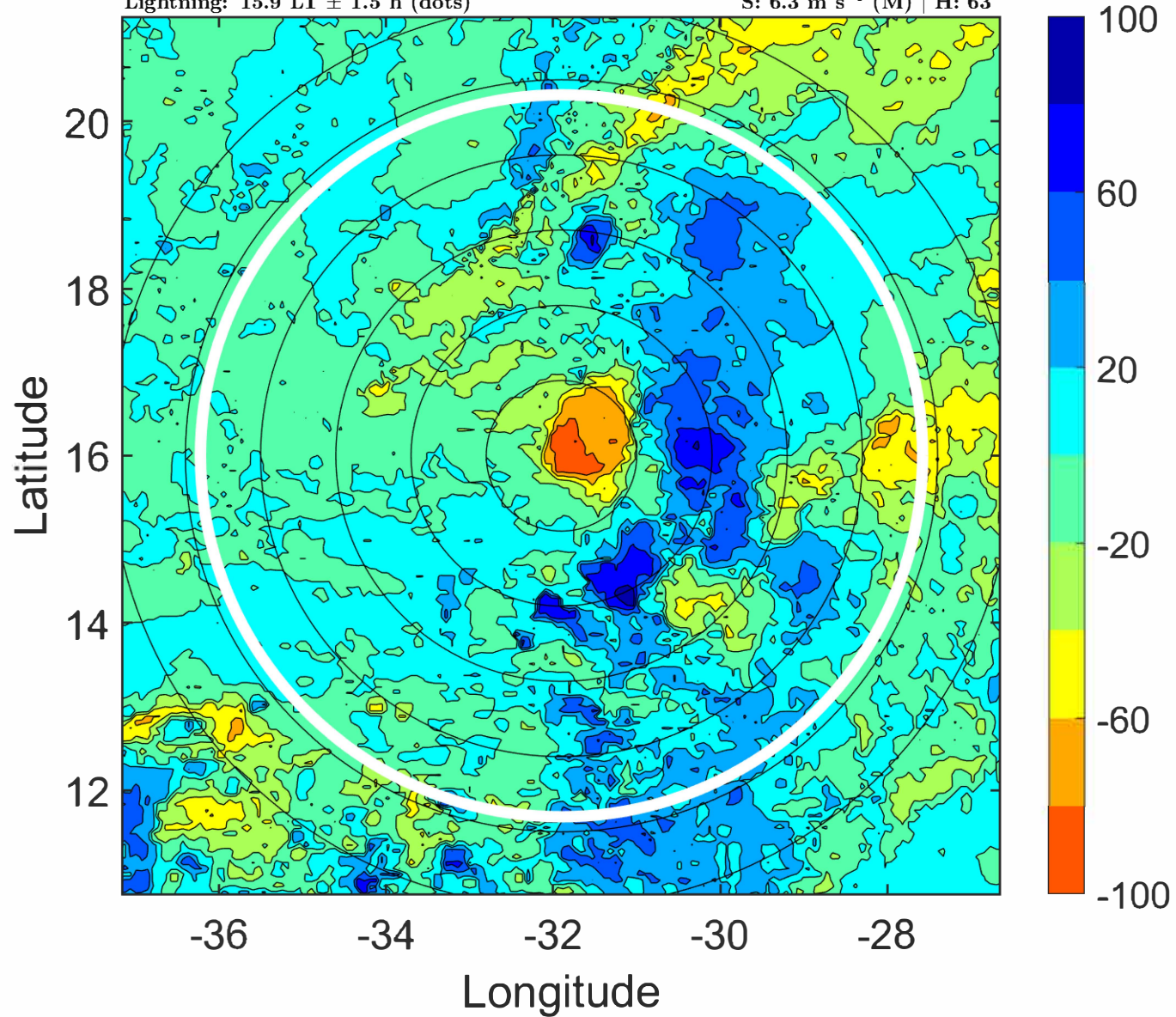
Δ t: 2022100518 (15.9 LT) - 2022100512 (9.9 LT)

Lightning: 15.9 LT \pm 1.5 h (dots)

PT: SLCP | EA: INACT

12L (TWELVE) | 30 kt TD

S: 6.3 m s⁻¹ (M) | H: 63°



IR BT & Lightning

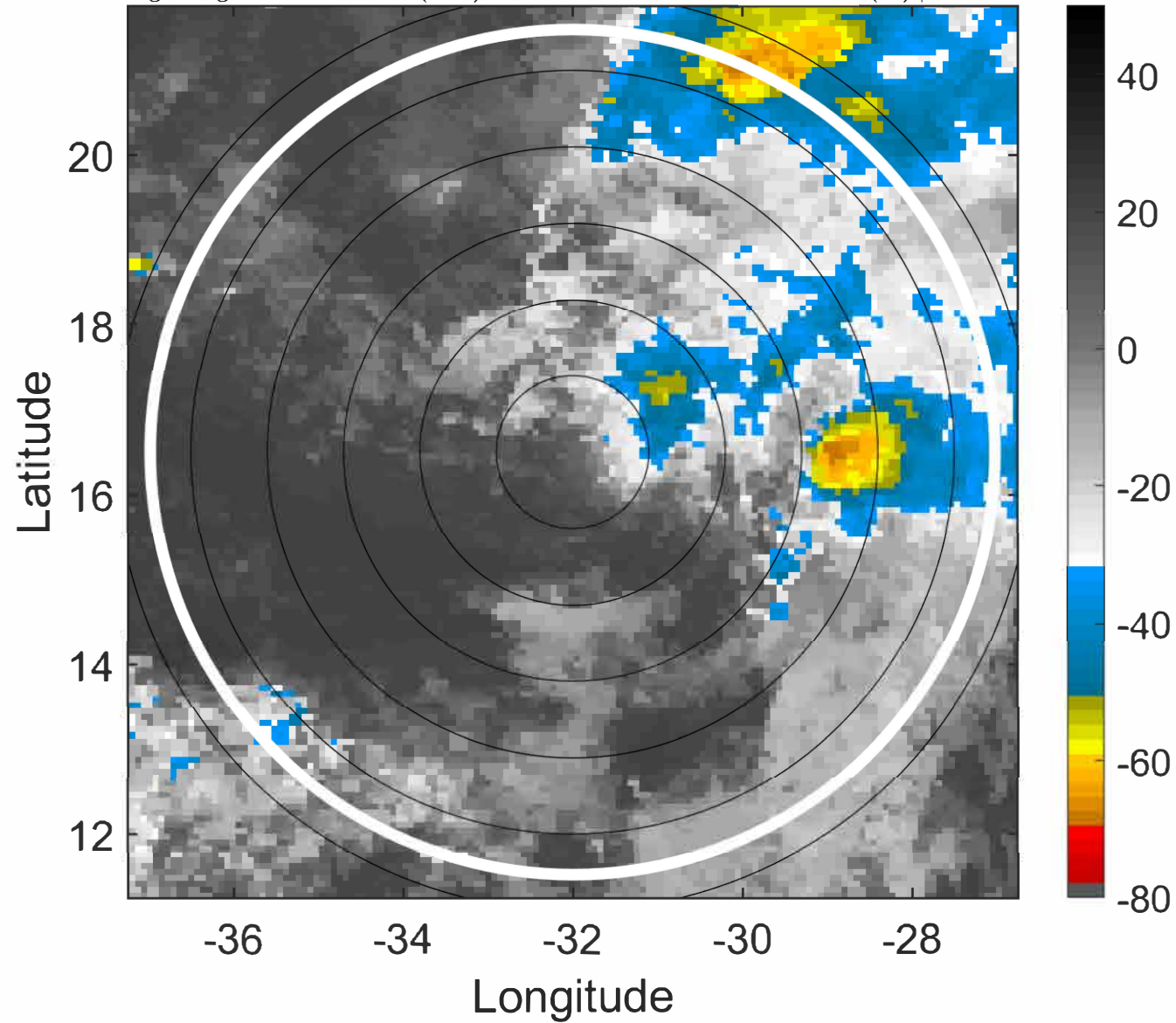
t: 2022100521 (18.9 LT)

Lightning: 18.9 LT \pm 1.5 h (dots)

PT: SLCP | EA: INACT

12L (TWELVE) | 30 kt TD

S: 7.2 m s⁻¹ (M) | H: 64.5°



6-h IR BT Differences & Lightning

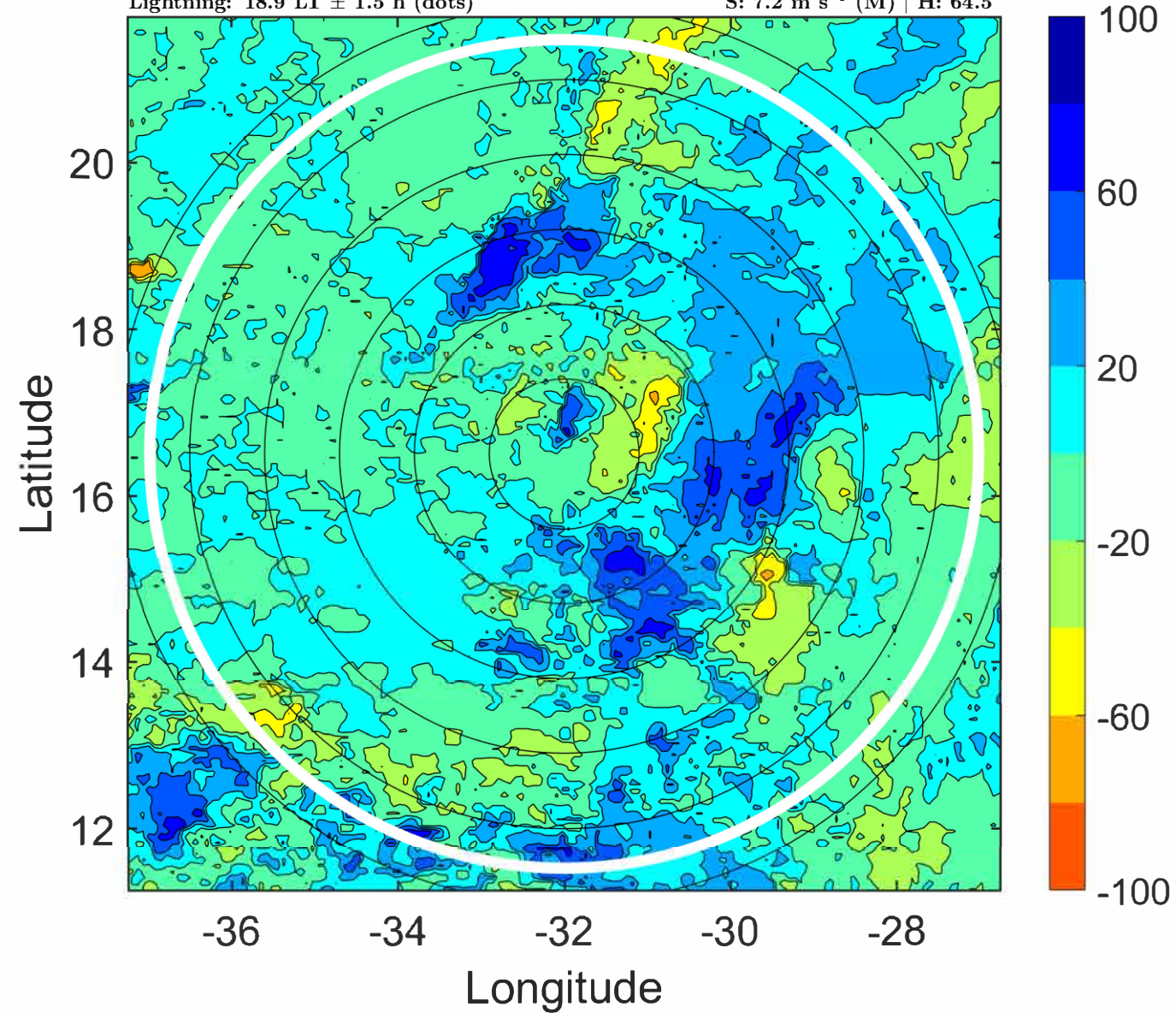
Δ t: 2022100521 (18.9 LT) - 2022100515 (12.9 LT)

Lightning: 18.9 LT \pm 1.5 h (dots)

PT: SLCP | EA: INACT

12L (TWELVE) | 30 kt TD

S: 7.2 m s⁻¹ (M) | H: 64.5°



IR BT & Lightning

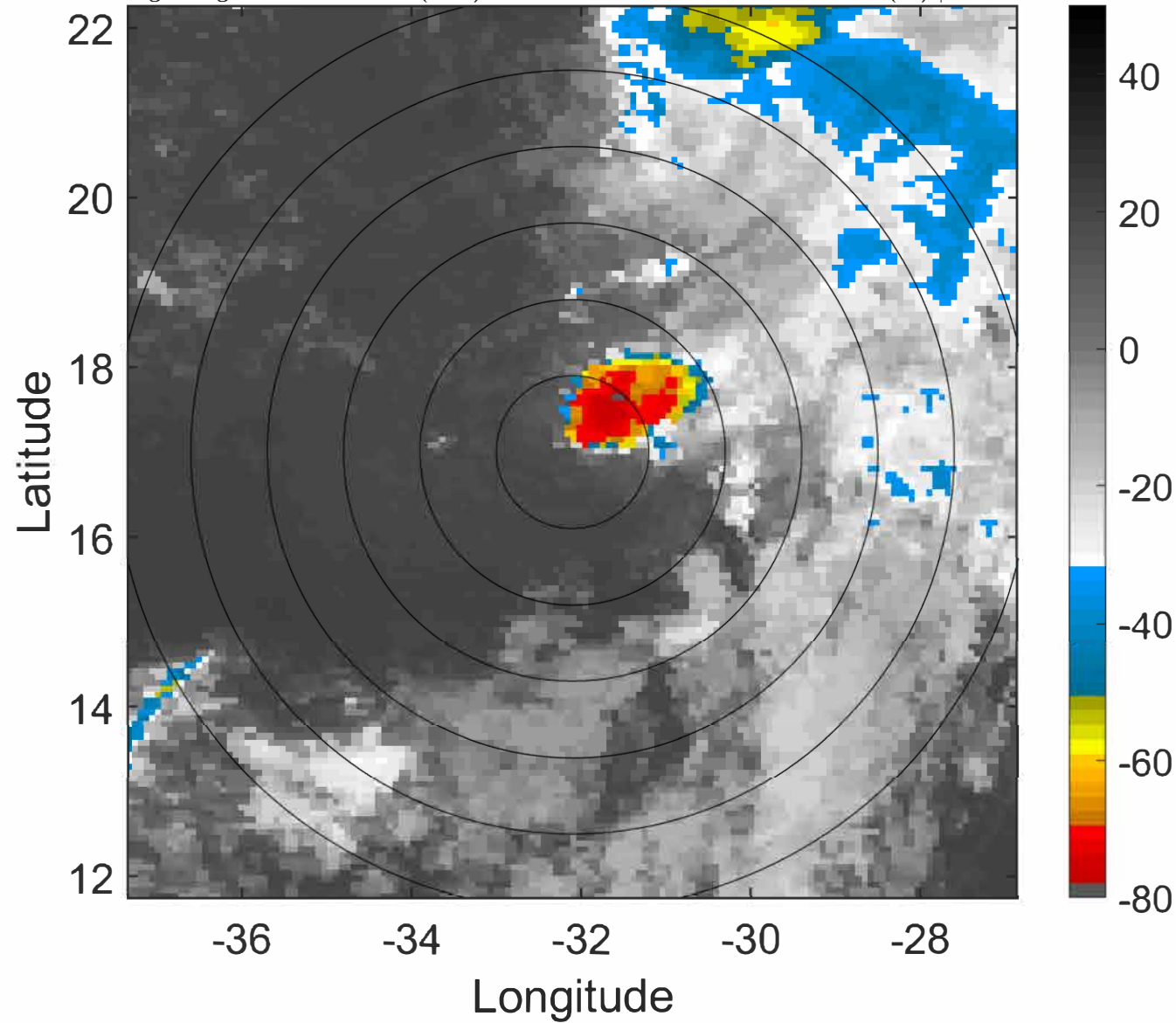
t: 2022100600 (21.9 LT)

Lightning: 21.9 LT \pm 1.5 h (dots)

PT: SLCP | EA: INACT

12L (TWELVE) | 30 kt TD

S: 8 m s⁻¹ (M) | H: 66°



6-h IR BT Differences & Lightning

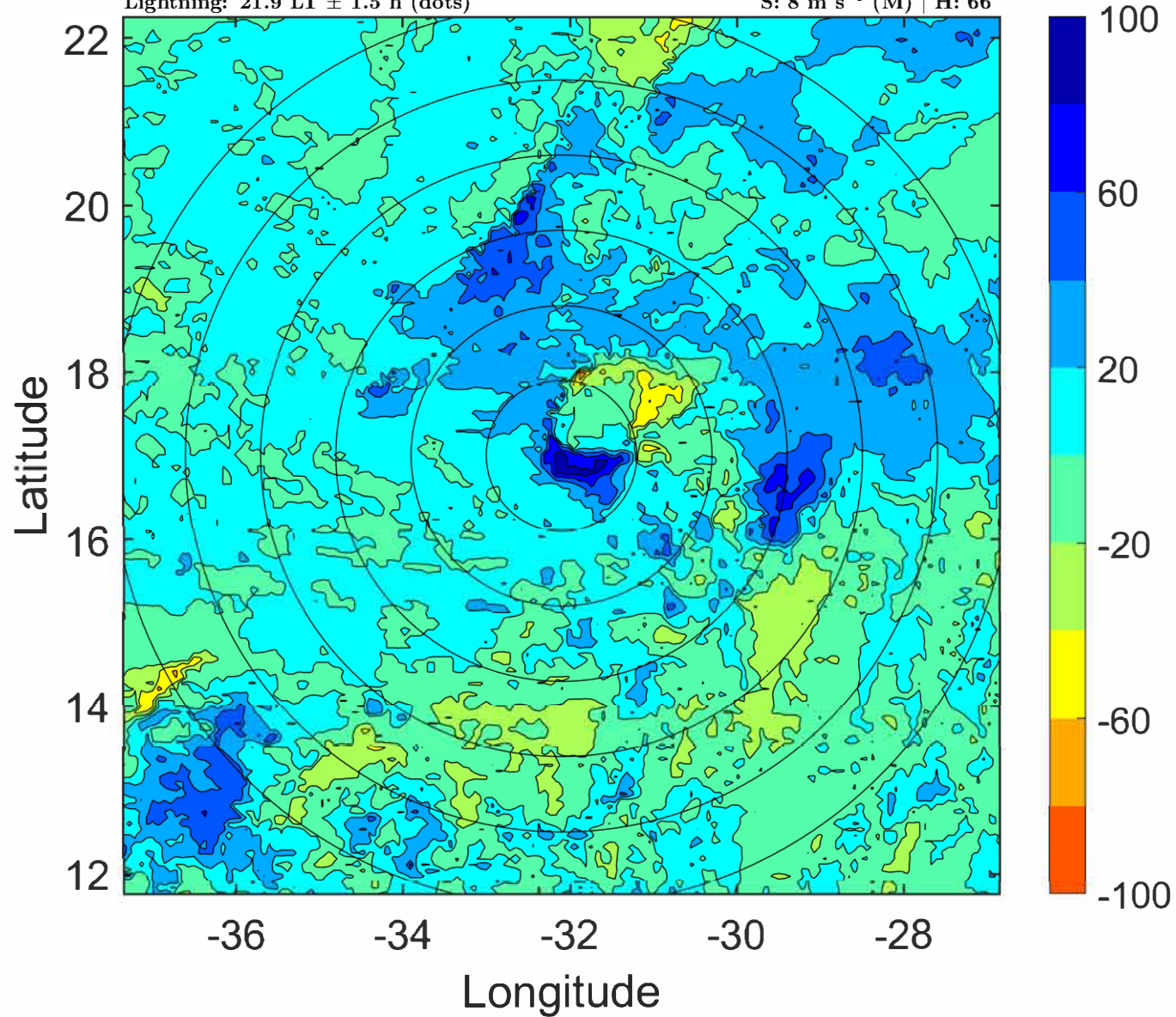
Δ t: 2022100600 (21.9 LT) - 2022100518 (15.9 LT)

Lightning: 21.9 LT \pm 1.5 h (dots)

PT: SLCP | EA: INACT

12L (TWELVE) | 30 kt TD

S: 8 m s⁻¹ (M) | H: 66°



IR BT & Lightning

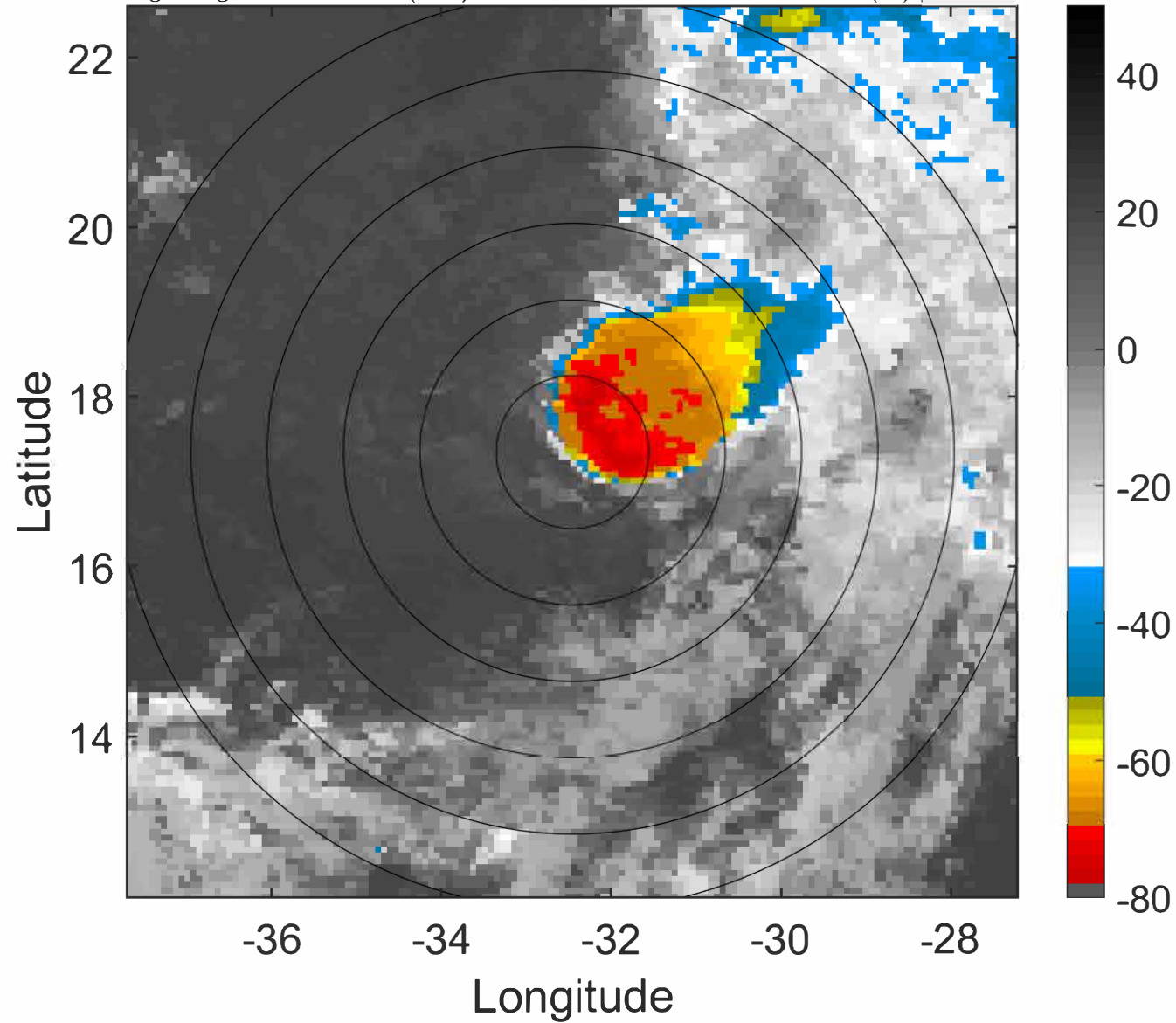
t: 2022100603 (0.8 LT)

Lightning: 0.8 LT \pm 1.5 h (dots)

PT: SLCP | EA: QUASI

12L (TWELVE) | 30 kt TD

S: 8.5 m s⁻¹ (M) | H: 67.5°



6-h IR BT Differences & Lightning

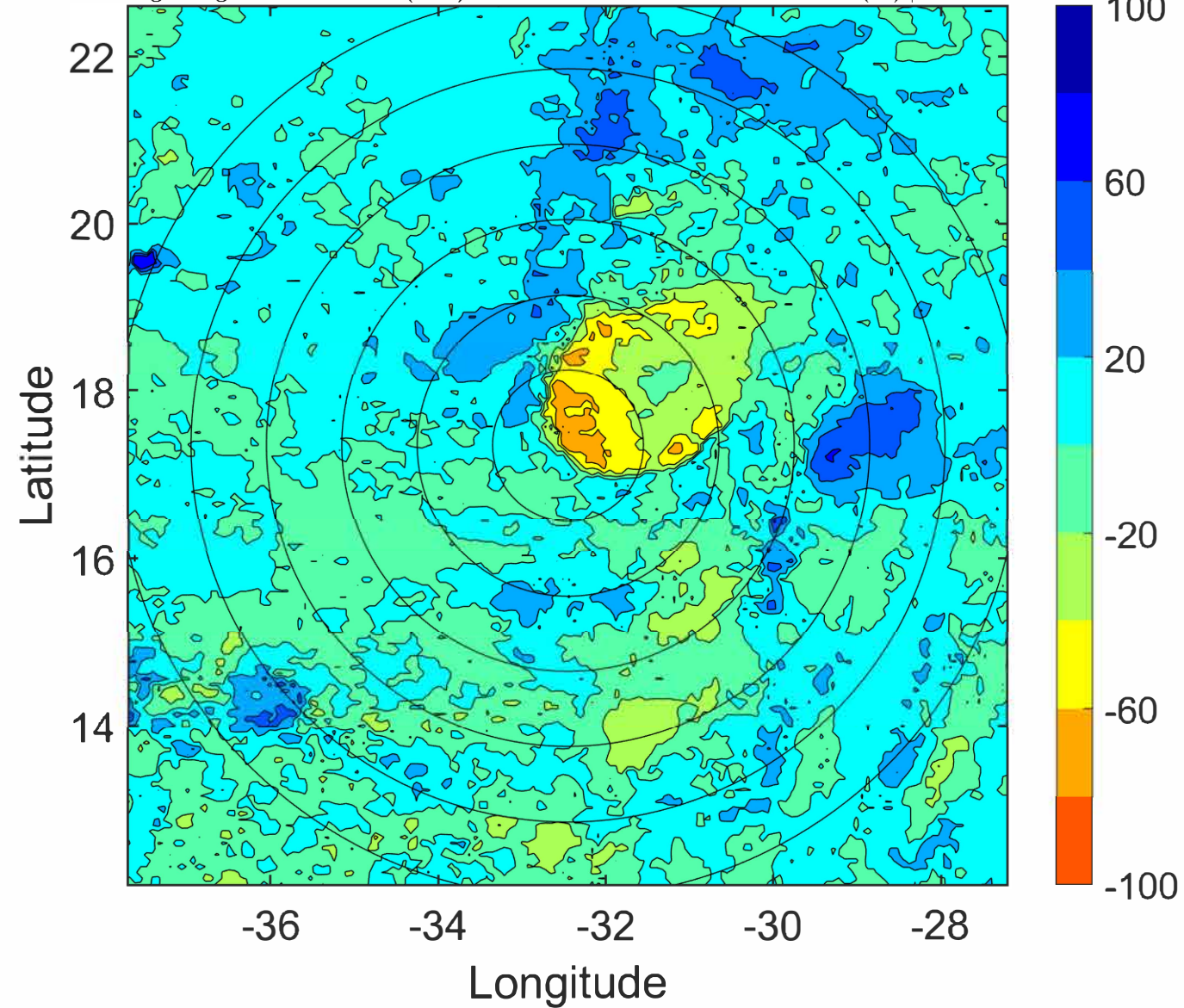
Δ t: 2022100603 (0.8 LT) - 2022100521 (18.9 LT)

Lightning: 0.8 LT \pm 1.5 h (dots)

PT: SLCP | EA: QUASI

12L (TWELVE) | 30 kt TD

S: 8.5 m s⁻¹ (M) | H: 67.5°



IR BT & Lightning

t: 2022100606 (3.8 LT)

Lightning: 3.8 LT \pm 1.5 h (dots)

PT: SLCP | EA: QUASI

12L (TWELVE) | 30 kt TD

S: 9.1 m s⁻¹ (M) | H: 69°

6-h IR BT Differences & Lightning

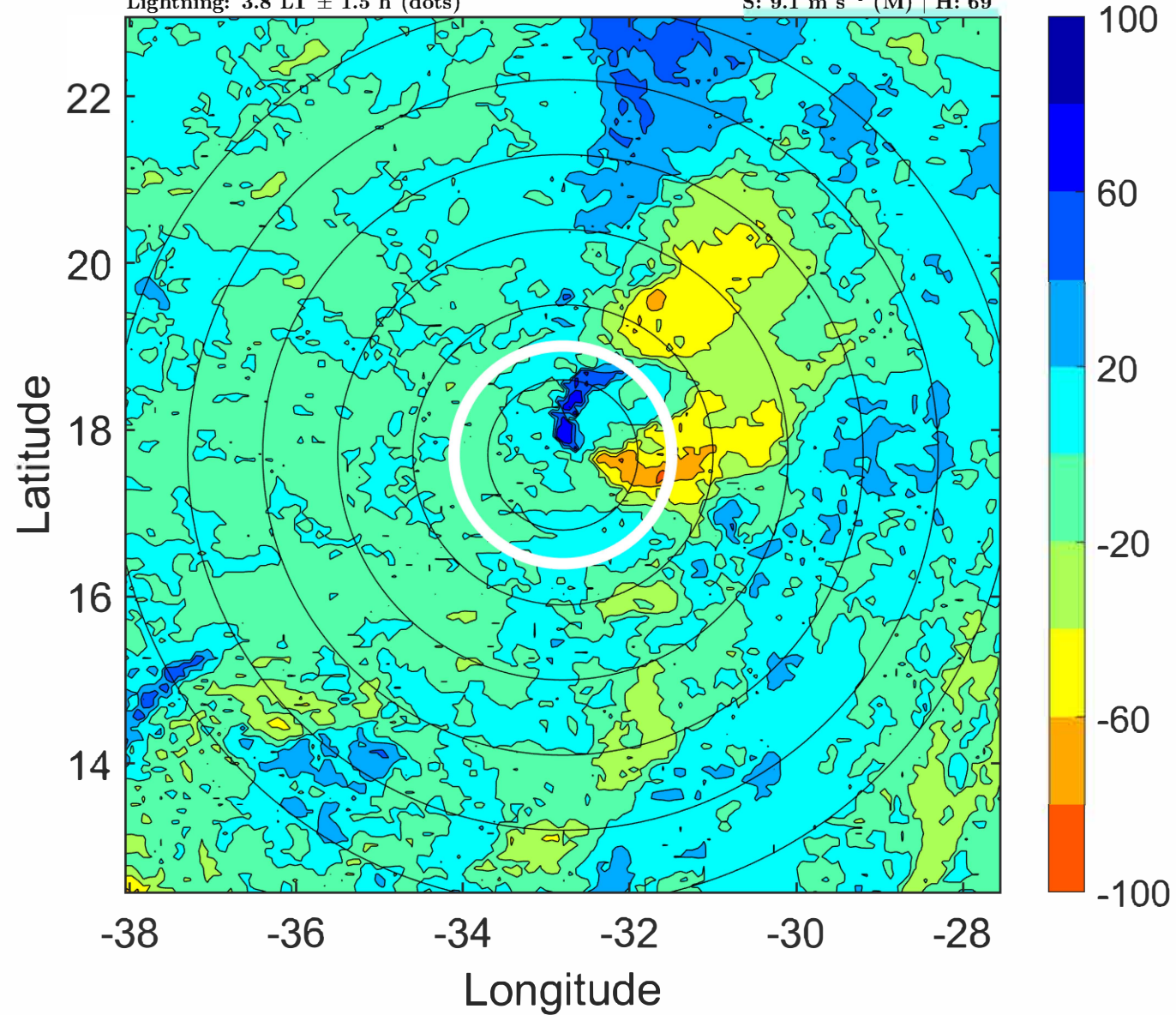
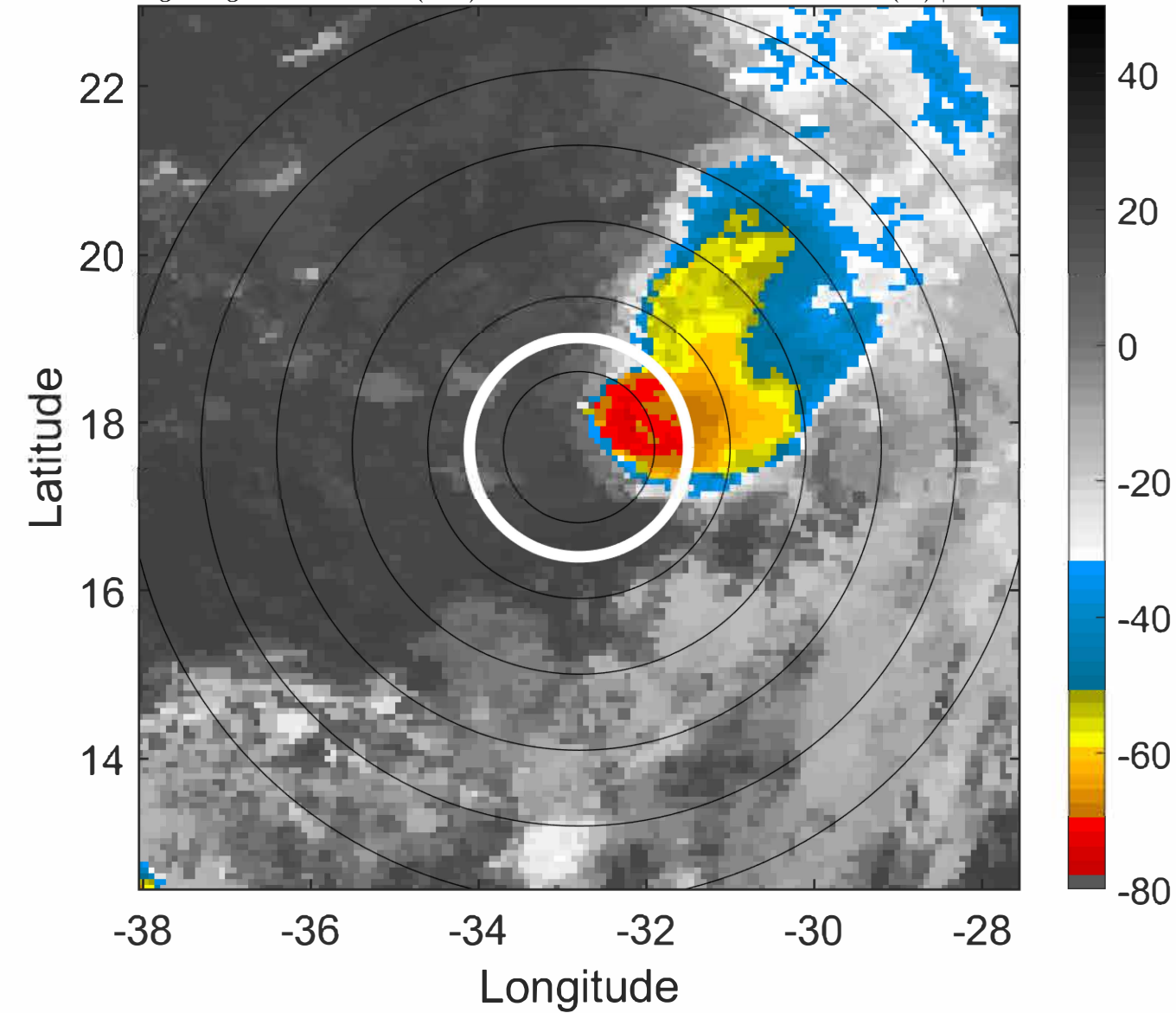
Δ t: 2022100606 (3.8 LT) - 2022100600 (21.9 LT)

Lightning: 3.8 LT \pm 1.5 h (dots)

PT: SLCP | EA: QUASI

12L (TWELVE) | 30 kt TD

S: 9.1 m s⁻¹ (M) | H: 69°



IR BT & Lightning

t: 2022100609 (6.8 LT)

Lightning: 6.8 LT \pm 1.5 h (dots)

PT: SLCP | EA: QUASI

12L (TWELVE) | 30 kt TD

S: 9 m s⁻¹ (M) | H: 67.5°

6-h IR BT Differences & Lightning

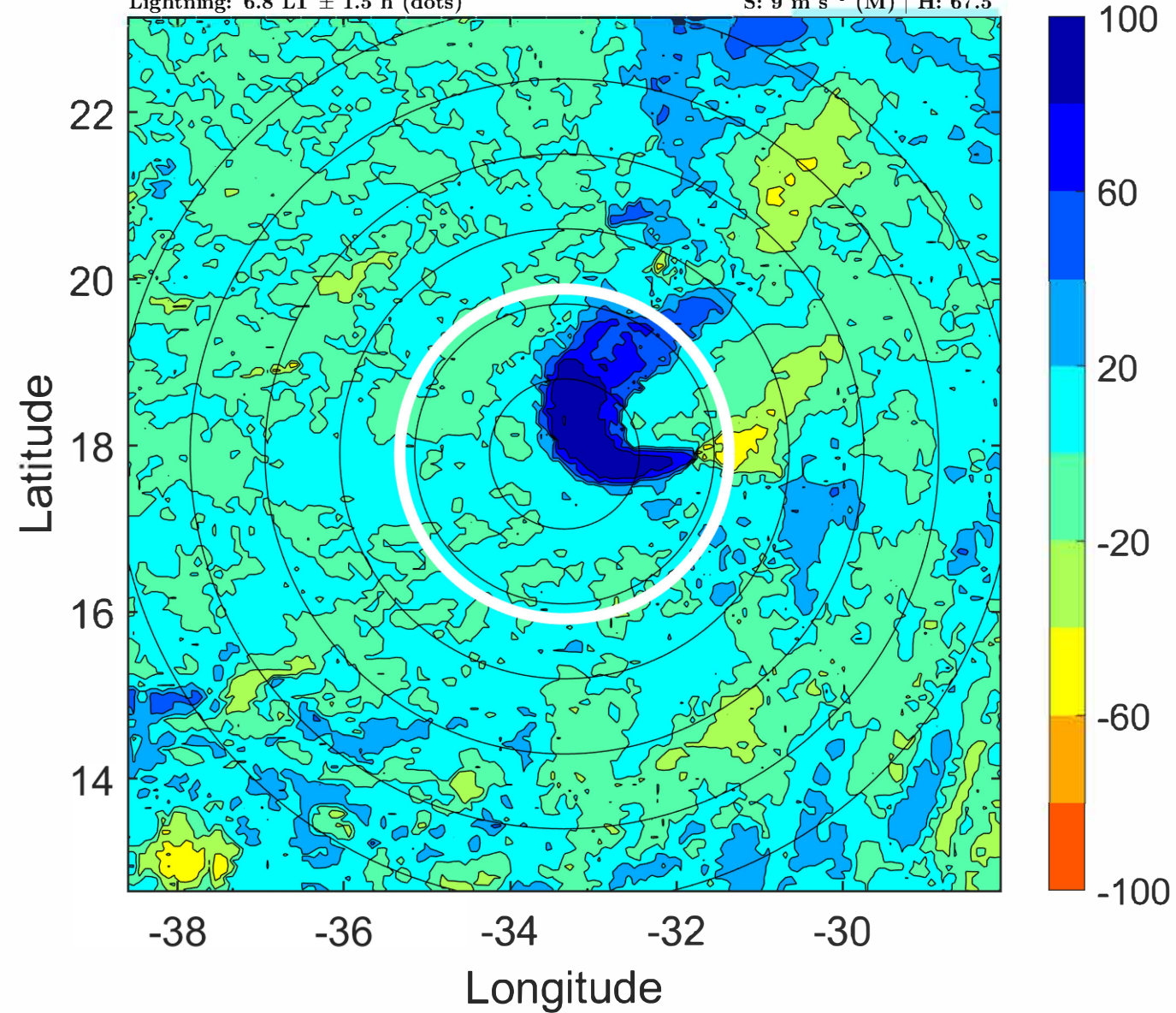
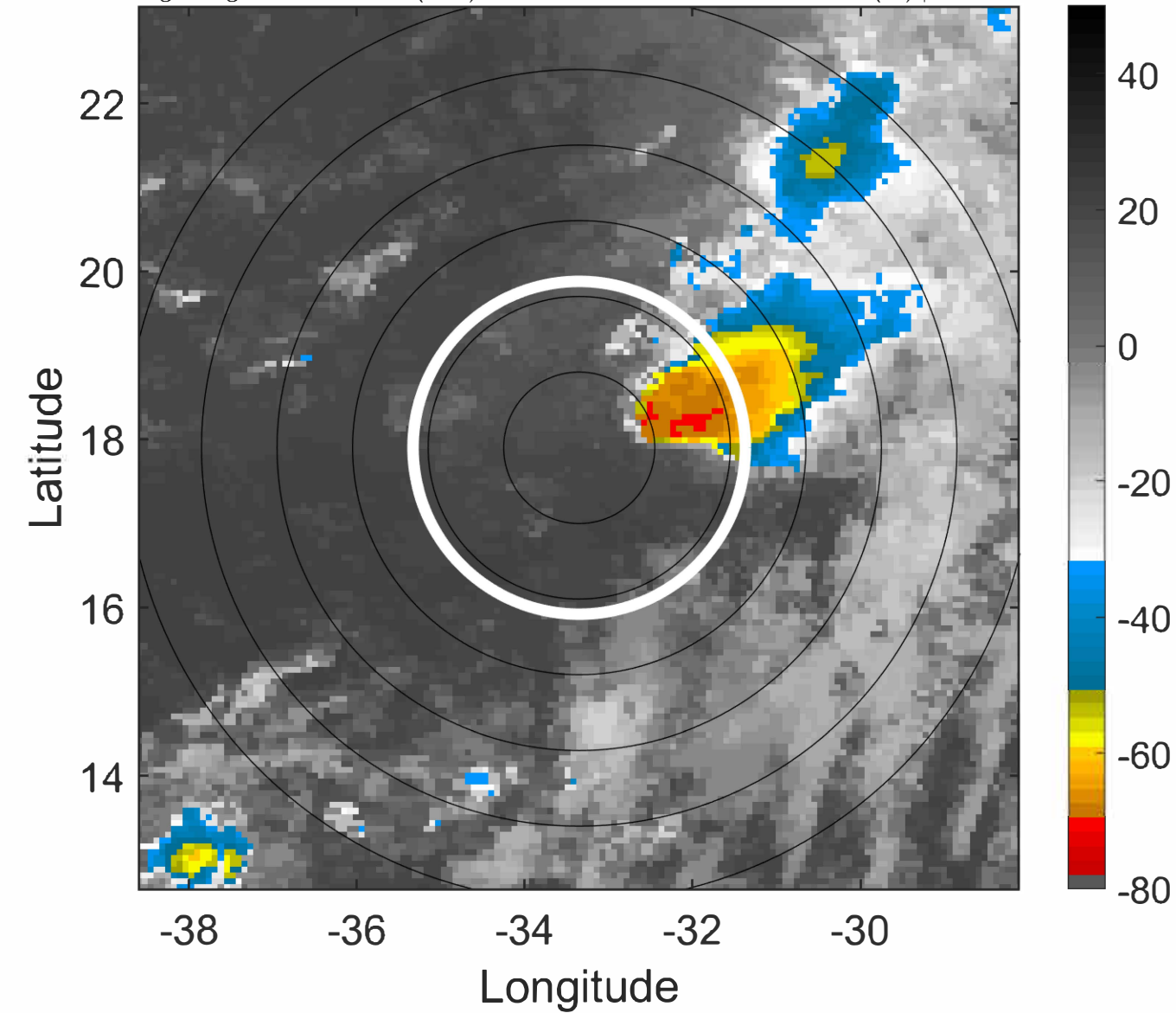
Δ t: 2022100609 (6.8 LT) - 2022100603 (0.8 LT)

Lightning: 6.8 LT \pm 1.5 h (dots)

PT: SLCP | EA: QUASI

12L (TWELVE) | 30 kt TD

S: 9 m s⁻¹ (M) | H: 67.5°



IR BT & Lightning

t: 2022100612 (9.7 LT)

Lightning: 9.7 LT \pm 1.5 h (dots)

PT: SLCP | EA: QUASI

12L (TWELVE) | 30 kt TD

S: 9 m s⁻¹ (M) | H: 66°

6-h IR BT Differences & Lightning

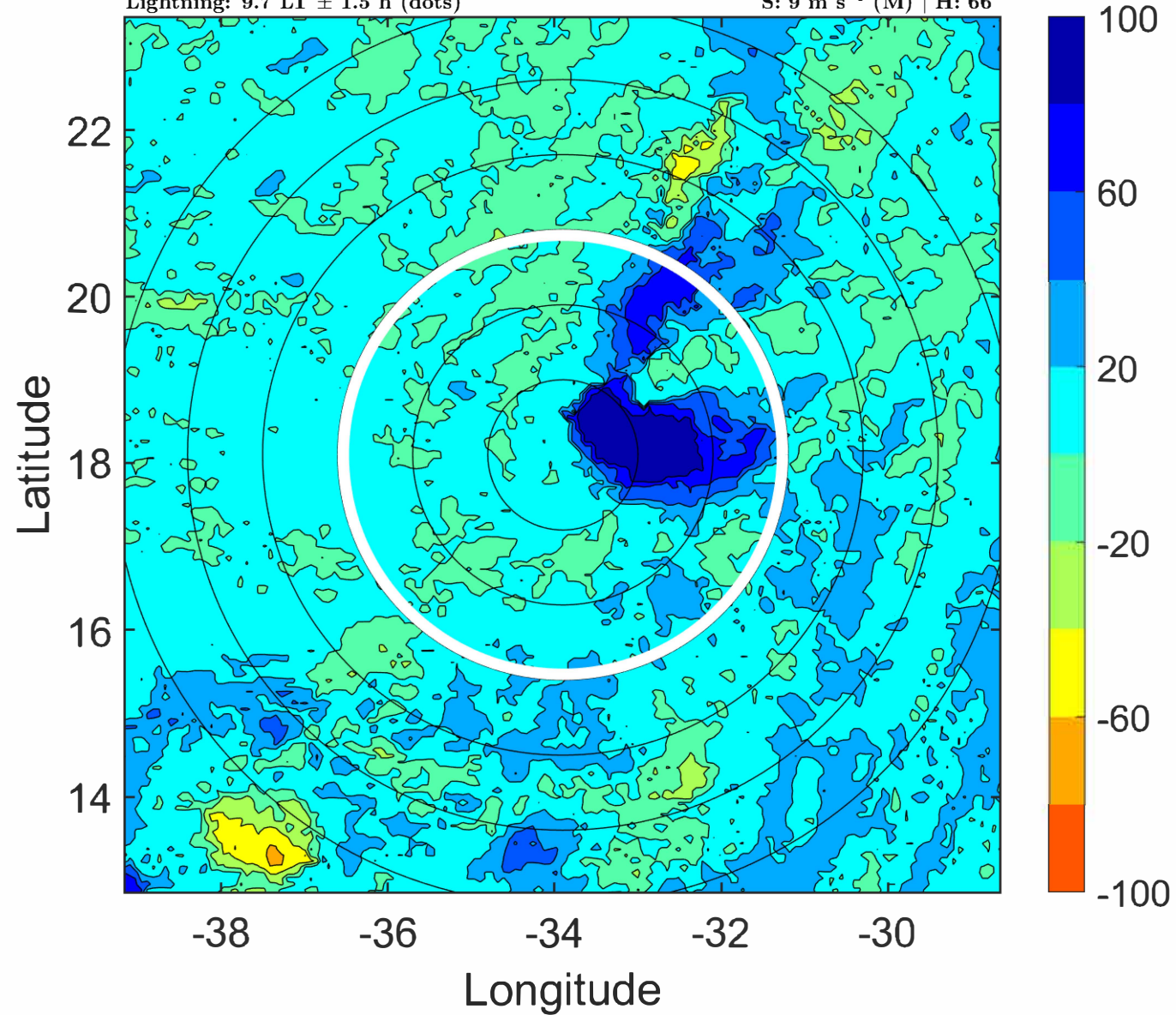
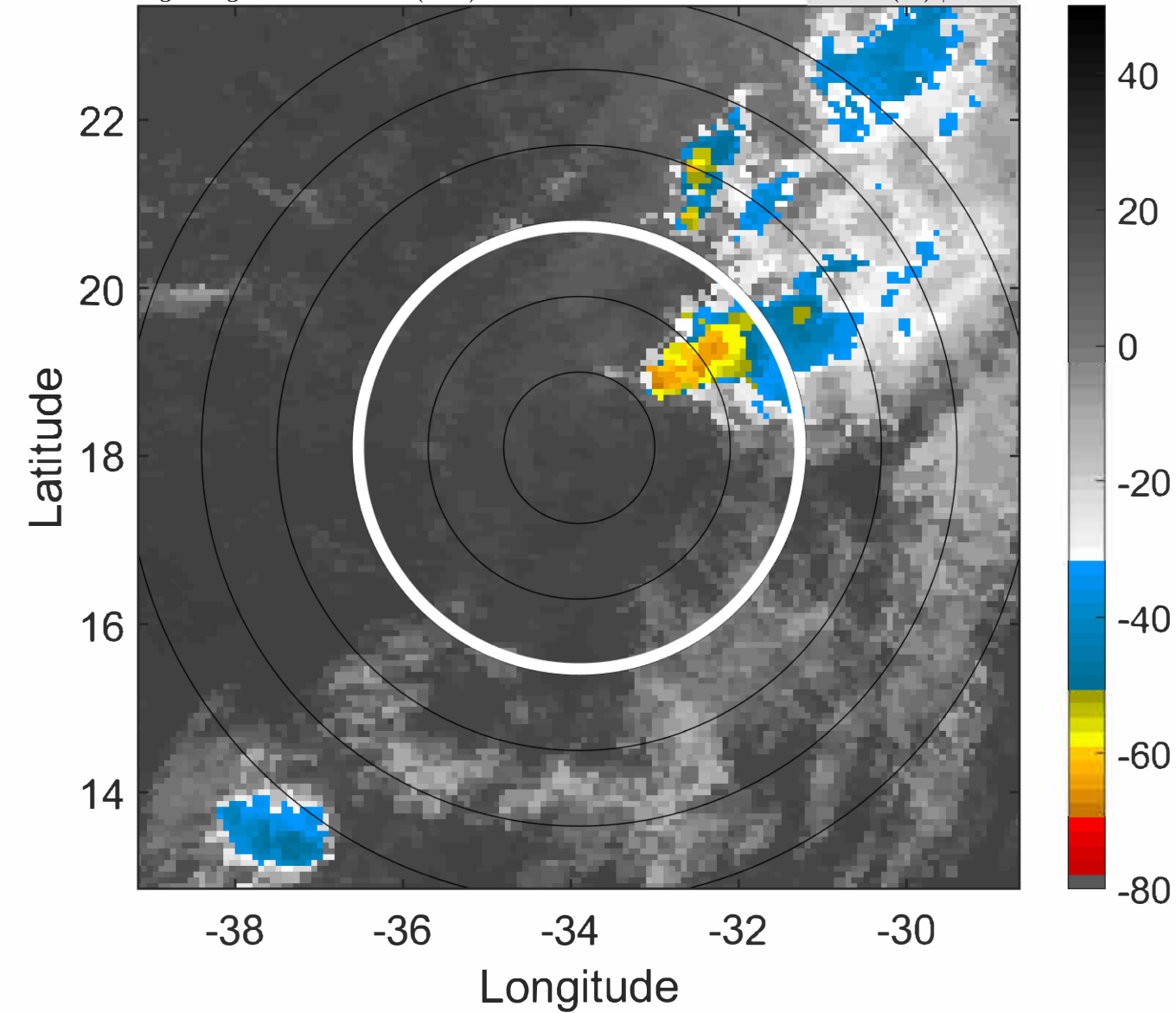
Δ t: 2022100612 (9.7 LT) - 2022100606 (3.8 LT)

Lightning: 9.7 LT \pm 1.5 h (dots)

PT: SLCP | EA: QUASI

12L (TWELVE) | 30 kt TD

S: 9 m s⁻¹ (M) | H: 66°



IR BT & Lightning

t: 2022100615 (12.7 LT)

Lightning: 12.7 LT \pm 1.5 h (dots)

PT: SLCP | EA: QUASI

12L (TWELVE) | 30 kt TD

S: 9.9 m s⁻¹ (M) | H: 66.5°

6-h IR BT Differences & Lightning

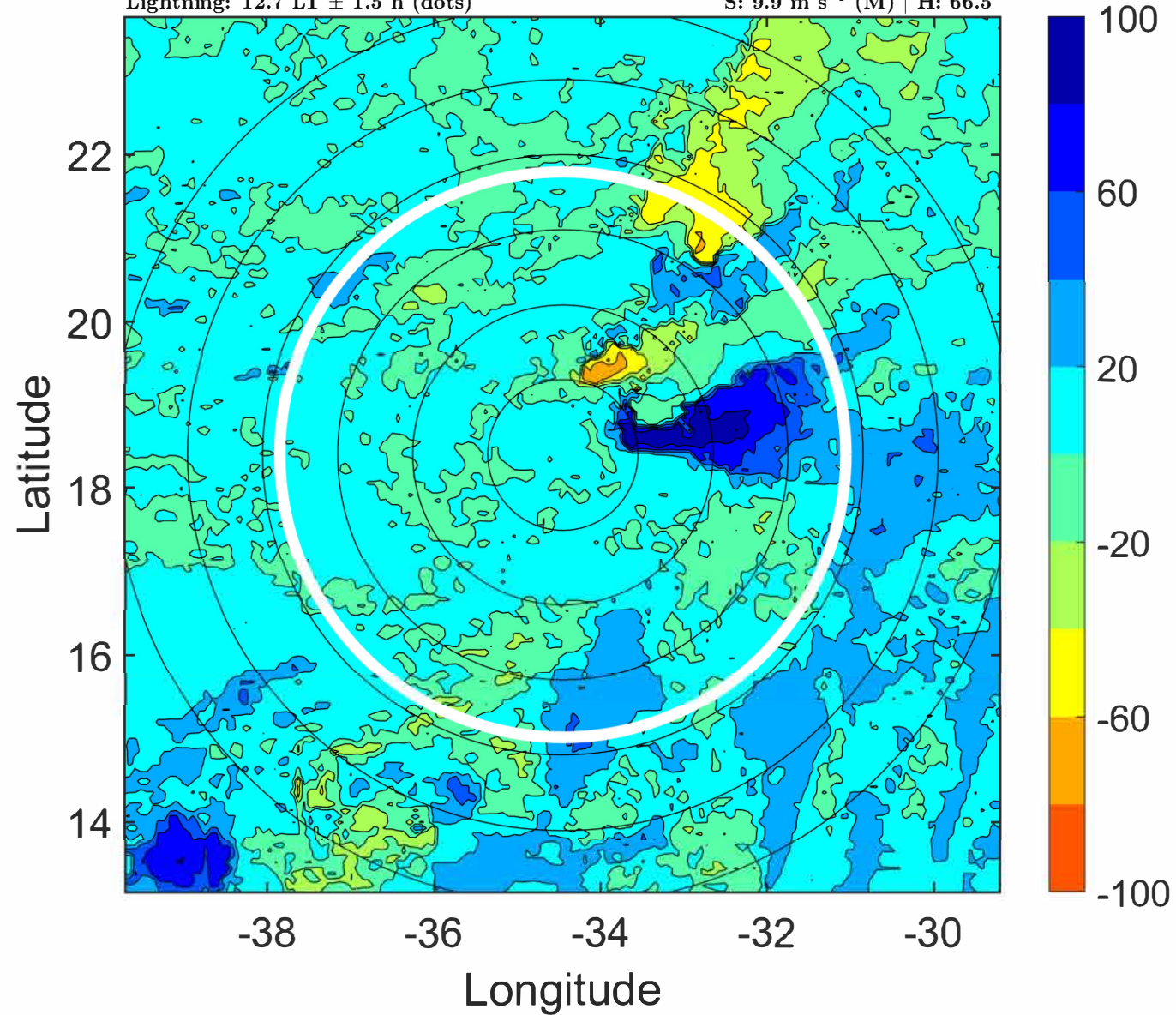
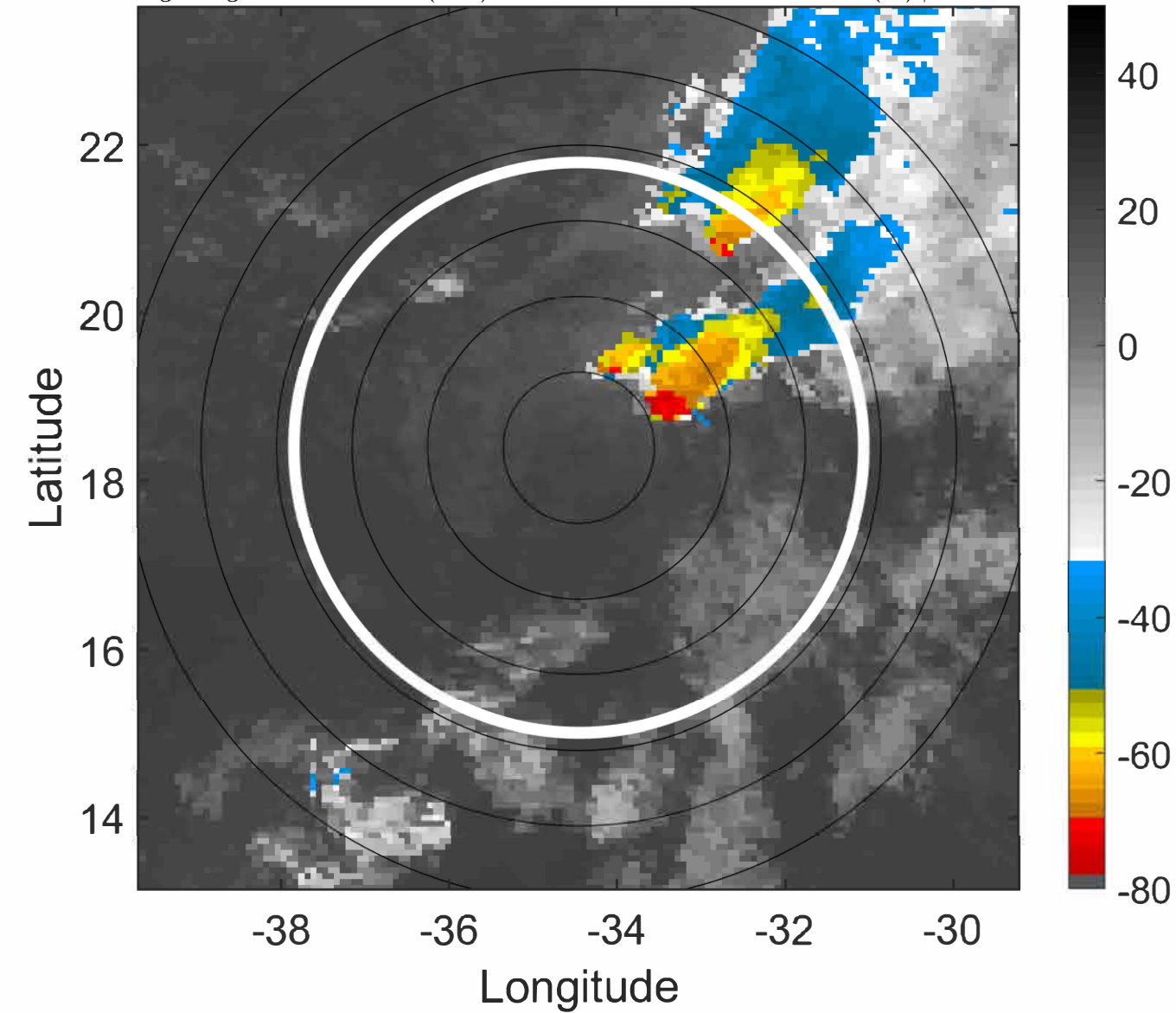
Δ t: 2022100615 (12.7 LT) - 2022100609 (6.8 LT)

Lightning: 12.7 LT \pm 1.5 h (dots)

PT: SLCP | EA: QUASI

12L (TWELVE) | 30 kt TD

S: 9.9 m s⁻¹ (M) | H: 66.5°



IR BT & Lightning

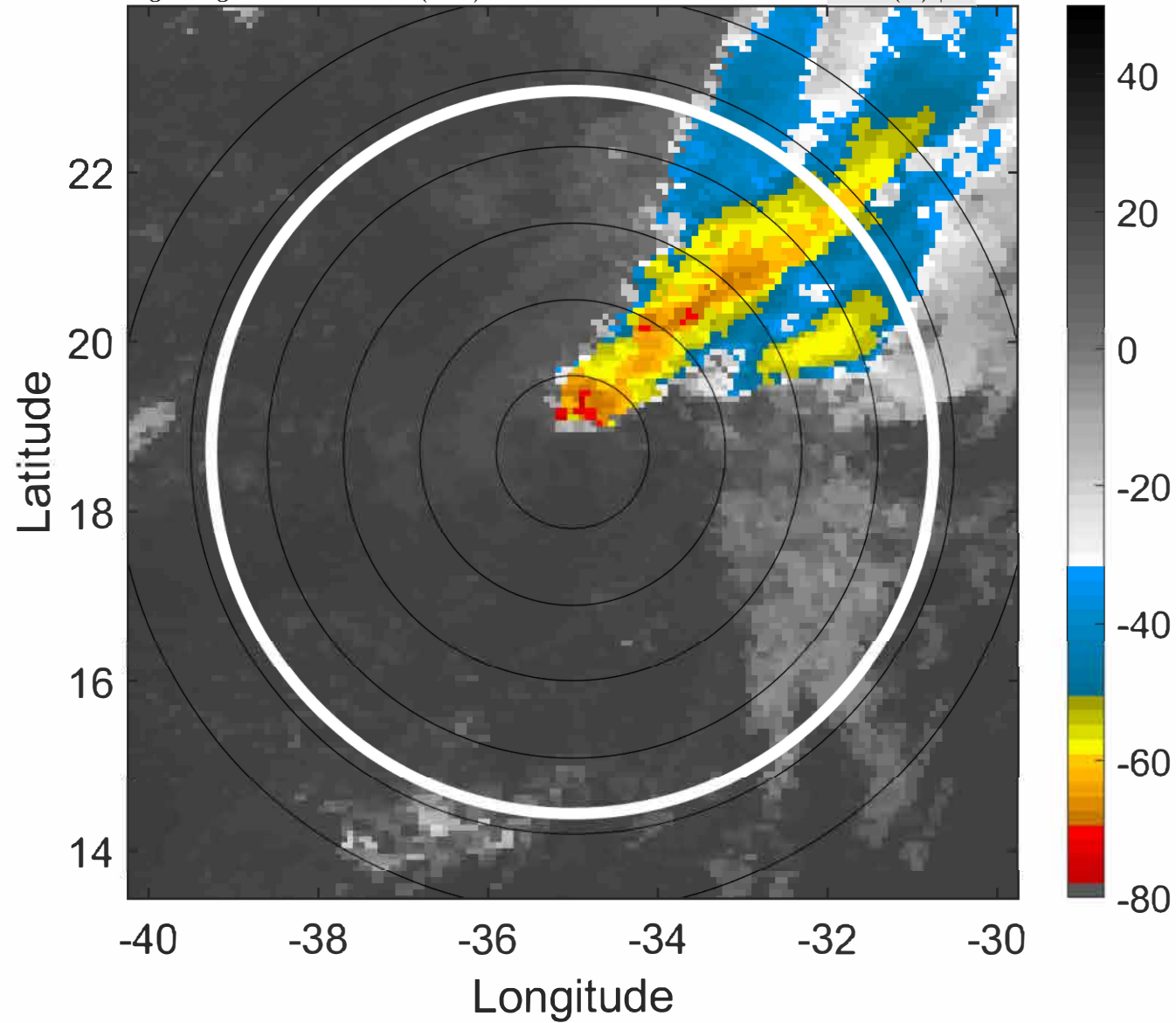
t: 2022100618 (15.7 LT)

Lightning: 15.7 LT \pm 1.5 h (dots)

PT: SLCP | EA: QUASI

12L (TWELVE) | 30 kt TD

S: 10.8 m s⁻¹ (H) | H: 67°



6-h IR BT Differences & Lightning

Δ t: 2022100618 (15.7 LT) - 2022100612 (9.7 LT)

Lightning: 15.7 LT \pm 1.5 h (dots)

PT: SLCP | EA: QUASI

12L (TWELVE) | 30 kt TD

S: 10.8 m s⁻¹ (H) | H: 67°

