

### IR BT & Lightning

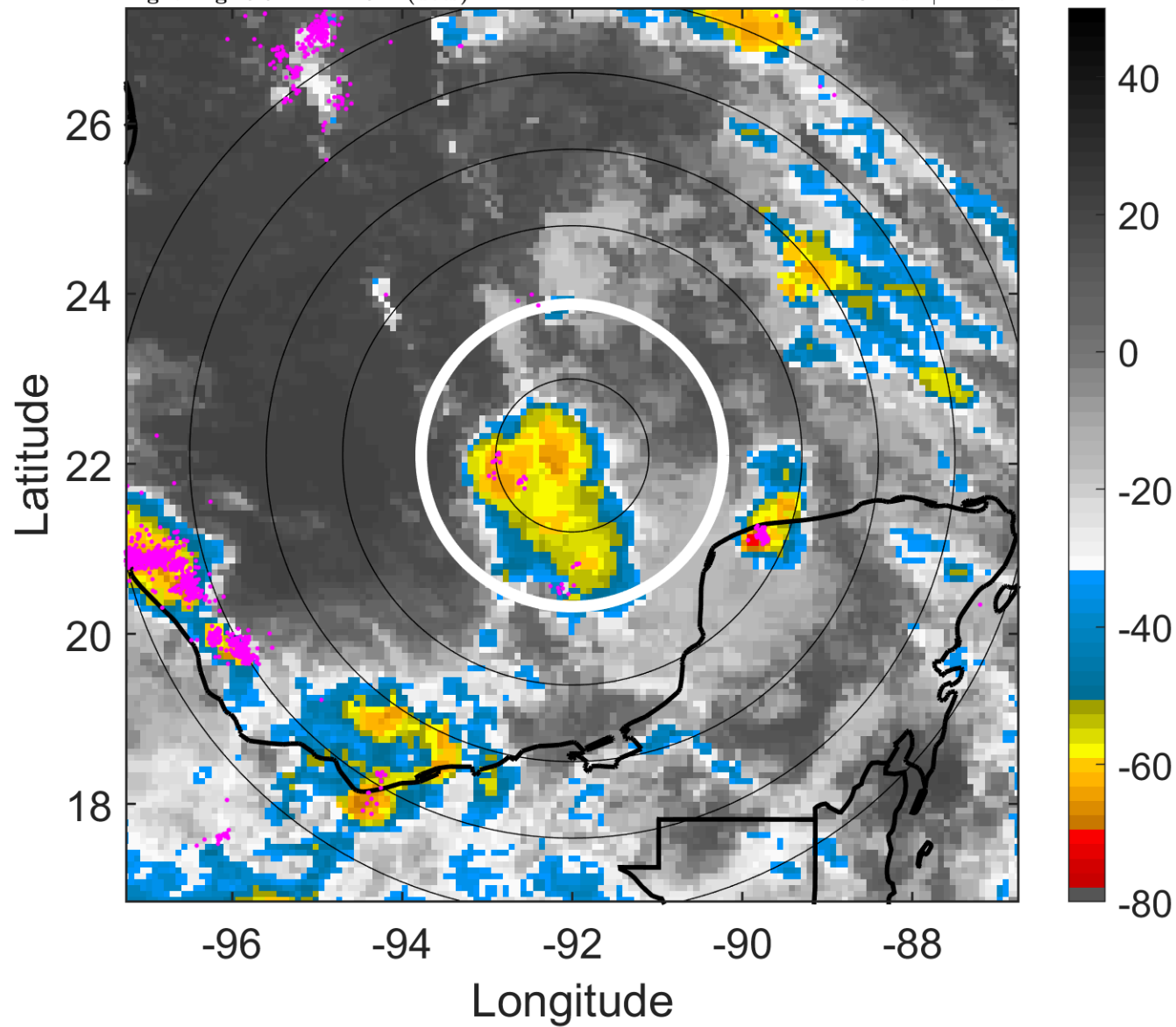
t: 2010070712 (5.9 LT)

Lightning: 5.9 LT  $\pm$  1.5 h (dots)

PT: LLCP | EA: ACT

02L (TWO) | 25 kt LO

S: null | H: null



### 6-h IR BT Differences & Lightning

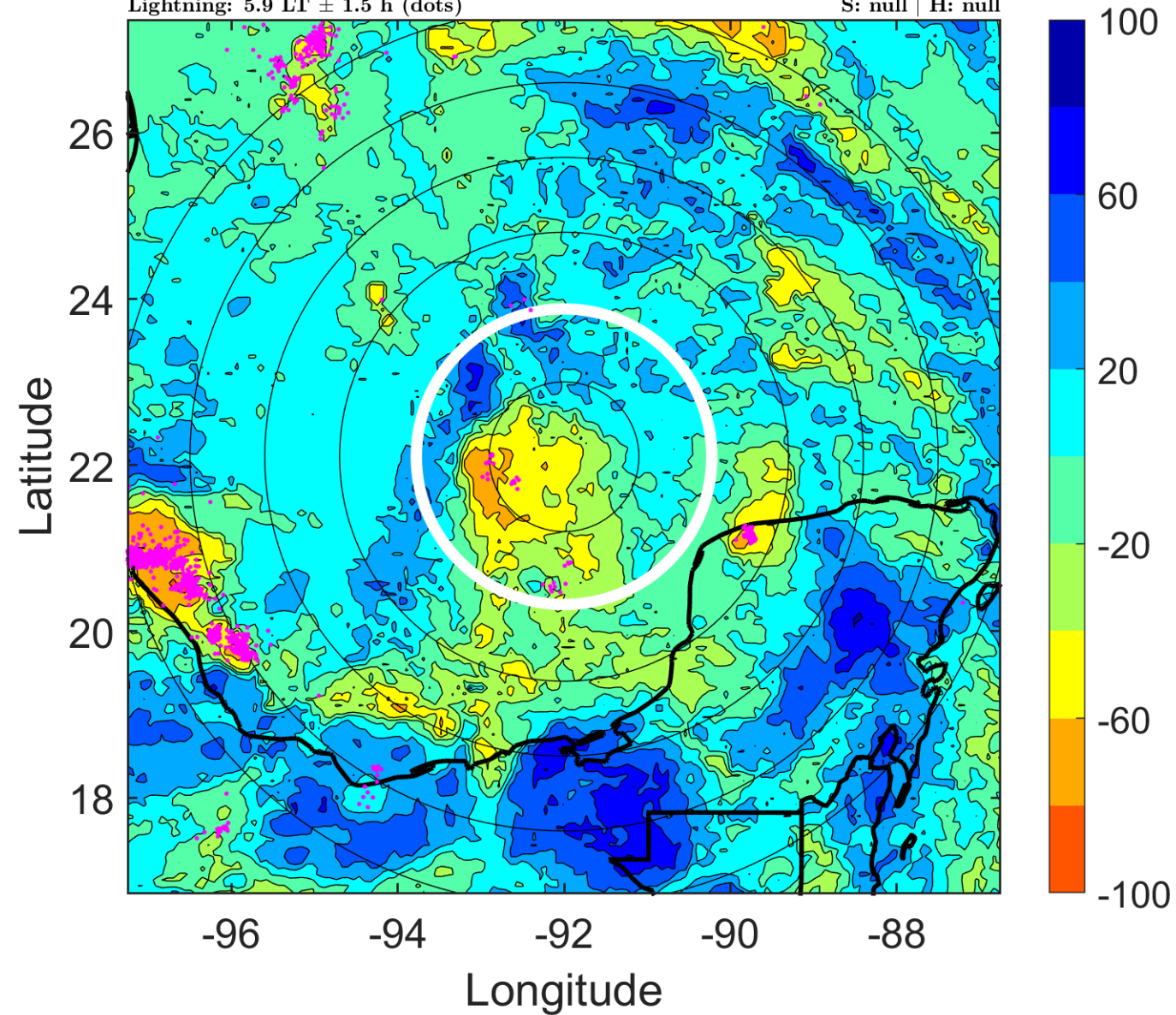
$\Delta$ t: 2010070712 (5.9 LT) - 2010070706 (23.9 LT)

Lightning: 5.9 LT  $\pm$  1.5 h (dots)

PT: LLCP | EA: ACT

02L (TWO) | 25 kt LO

S: null | H: null



### IR BT & Lightning

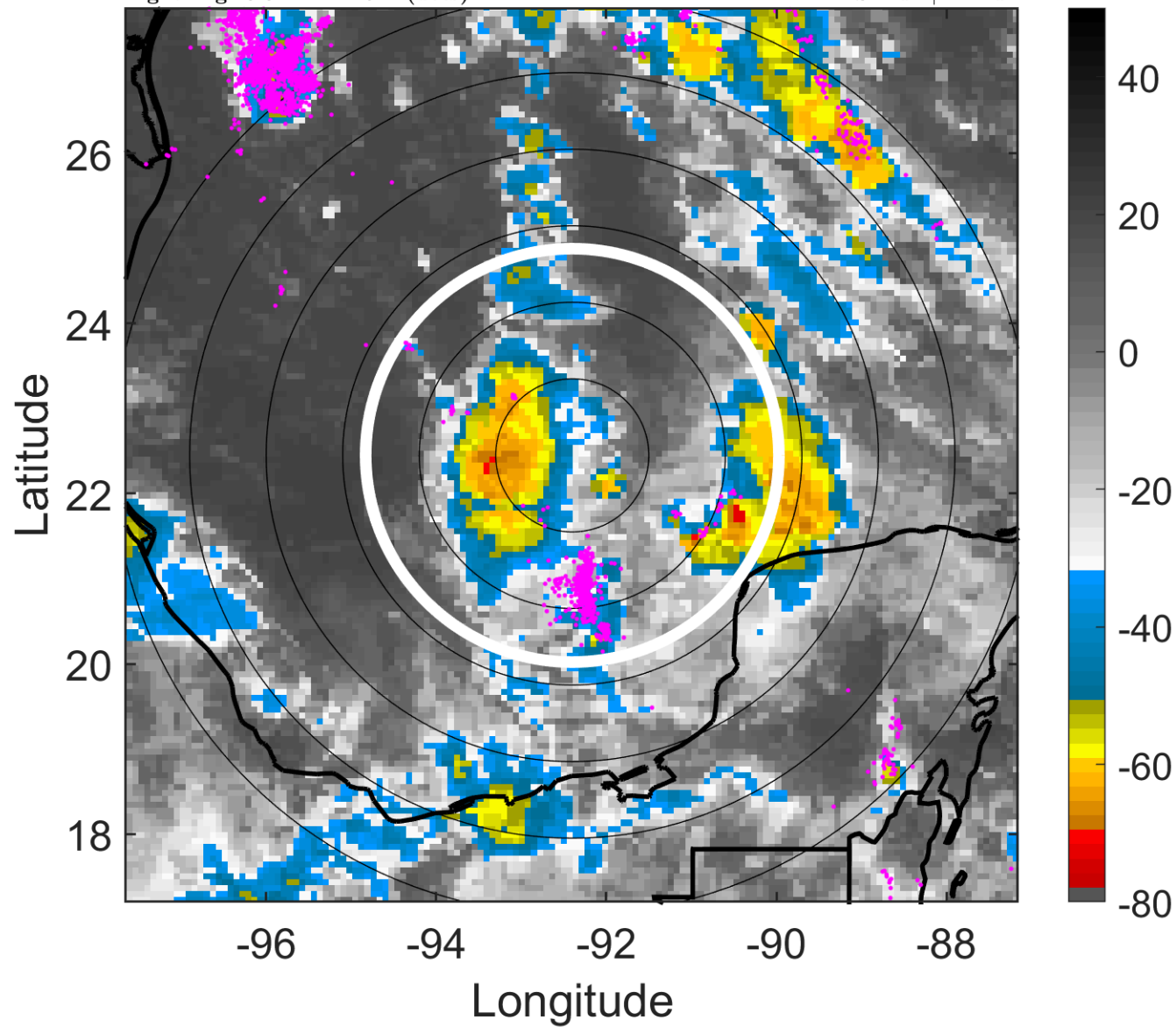
t: 2010070715 (8.8 LT)

Lightning: 8.8 LT  $\pm$  1.5 h (dots)

PT: LLCP | EA: ACT

02L (TWO) | 27.5 kt LO

S: null | H: null



### 6-h IR BT Differences & Lightning

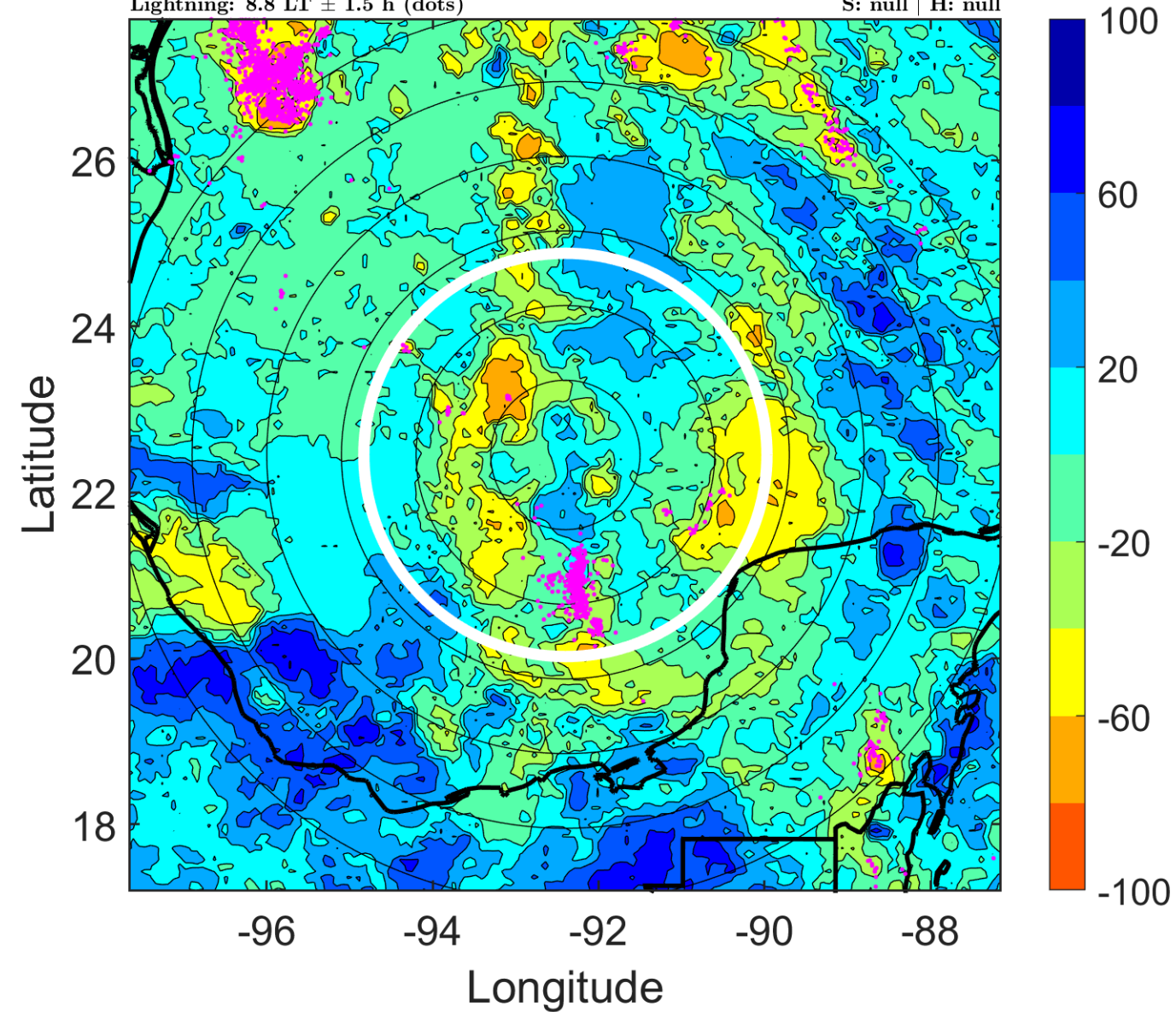
$\Delta$ t: 2010070715 (8.8 LT) - 2010070709 (2.9 LT)

Lightning: 8.8 LT  $\pm$  1.5 h (dots)

PT: LLCP | EA: ACT

02L (TWO) | 27.5 kt LO

S: null | H: null





### IR BT & Lightning

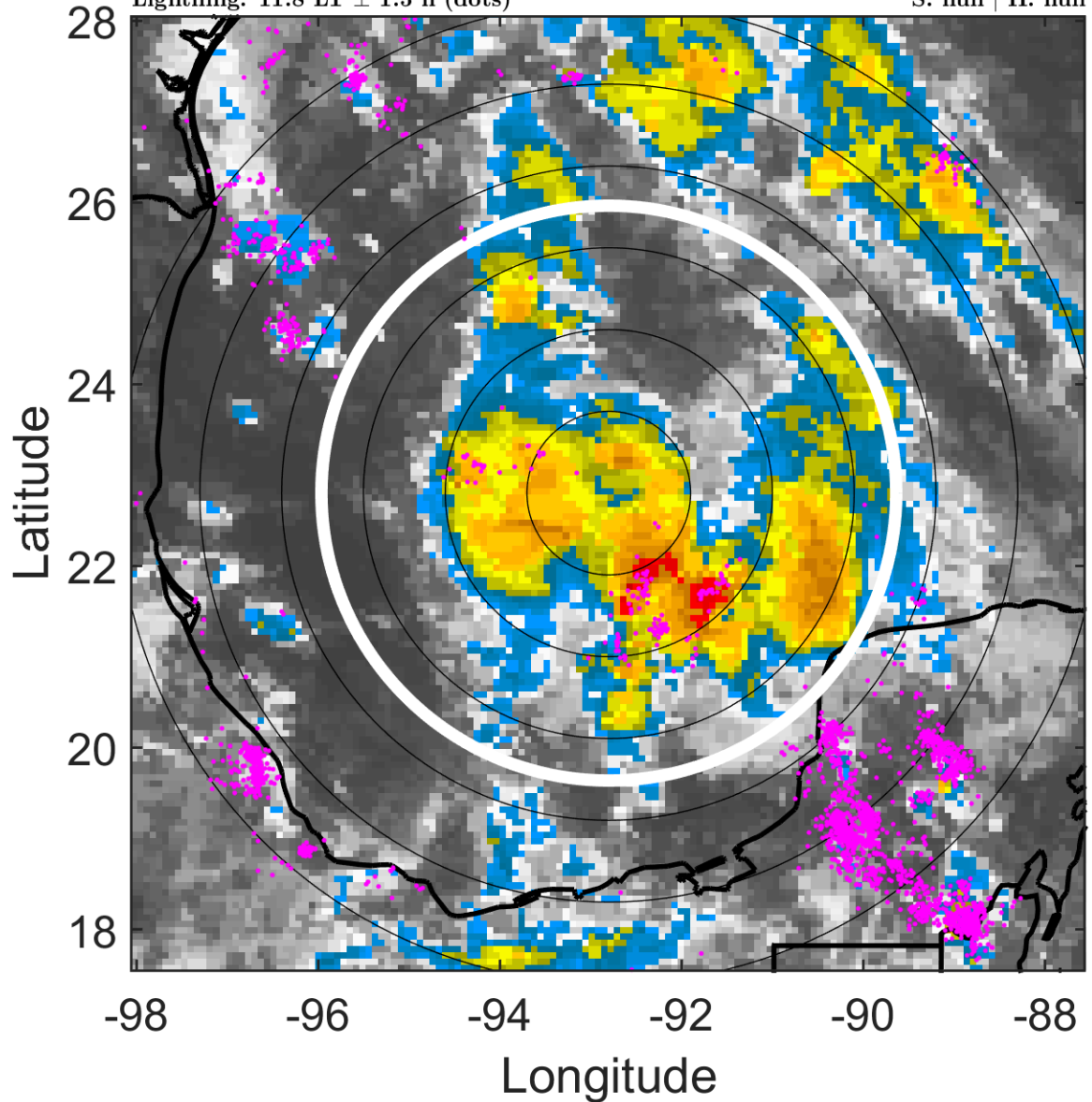
t: 2010070718 (11.8 LT)

Lightning: 11.8 LT  $\pm$  1.5 h (dots)

PT: LLCP | EA: ACT

02L (TWO) | 30 kt LO

S: null | H: null



### 6-h IR BT Differences & Lightning

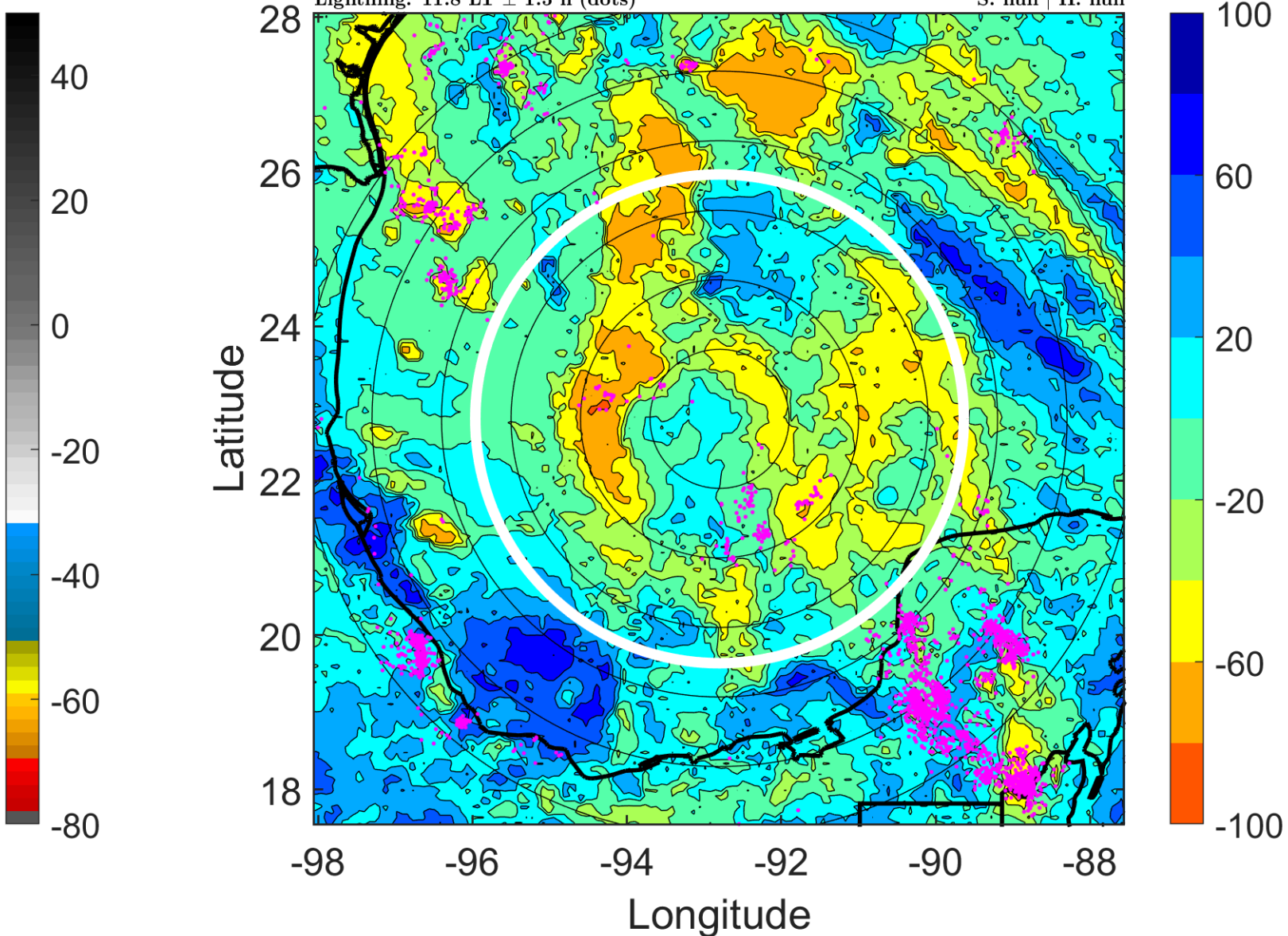
$\Delta$ t: 2010070718 (11.8 LT) - 2010070712 (5.9 LT)

Lightning: 11.8 LT  $\pm$  1.5 h (dots)

PT: LLCP | EA: ACT

02L (TWO) | 30 kt LO

S: null | H: null



### IR BT & Lightning

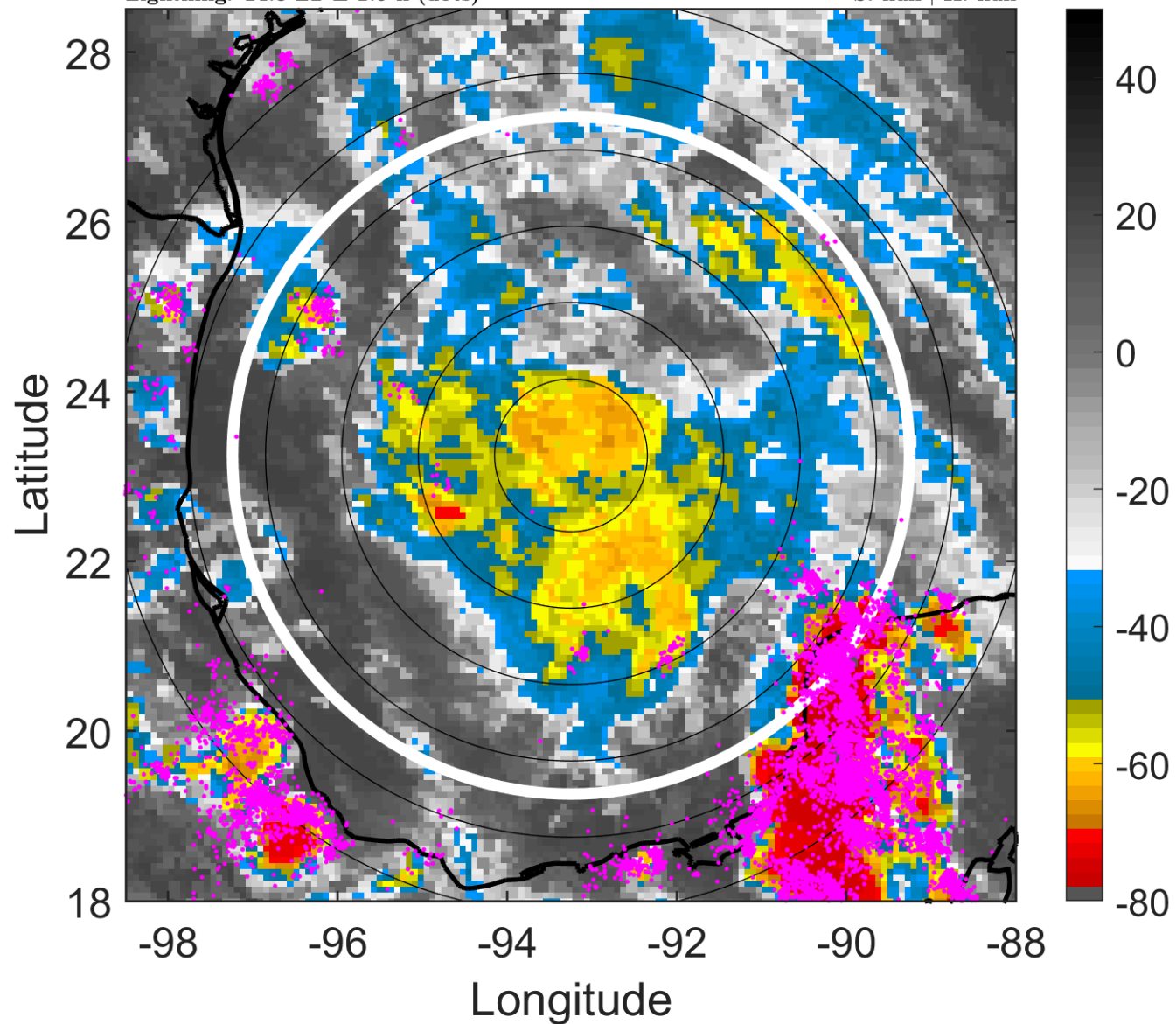
t: 2010070721 (14.8 LT)

Lightning: 14.8 LT  $\pm$  1.5 h (dots)

PT: LLCP | EA: ACT

02L (TWO) | 30 kt LO

S: null | H: null



### 6-h IR BT Differences & Lightning

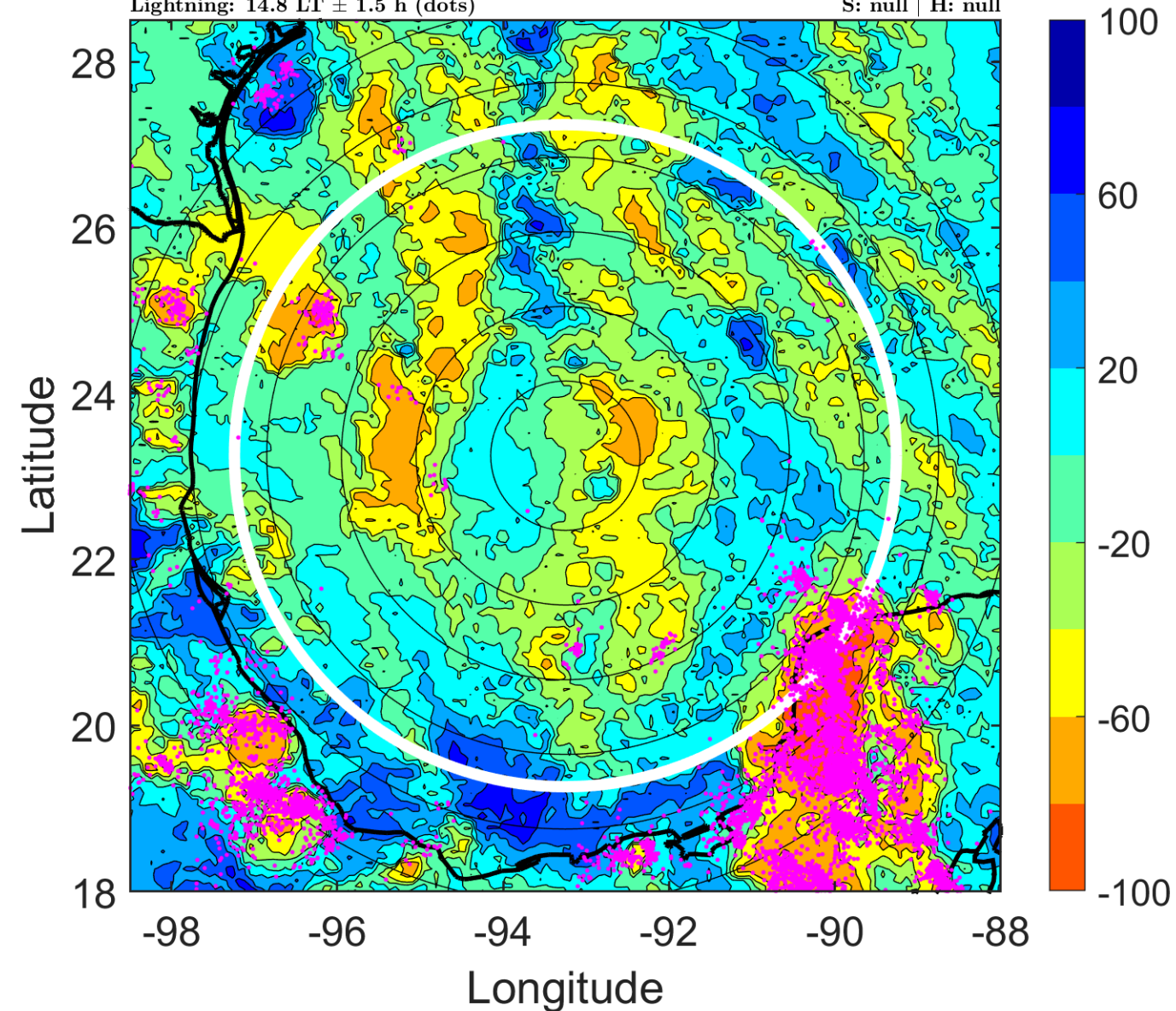
$\Delta$ t: 2010070721 (14.8 LT) - 2010070715 (8.8 LT)

Lightning: 14.8 LT  $\pm$  1.5 h (dots)

PT: LLCP | EA: ACT

02L (TWO) | 30 kt LO

S: null | H: null





### IR BT & Lightning

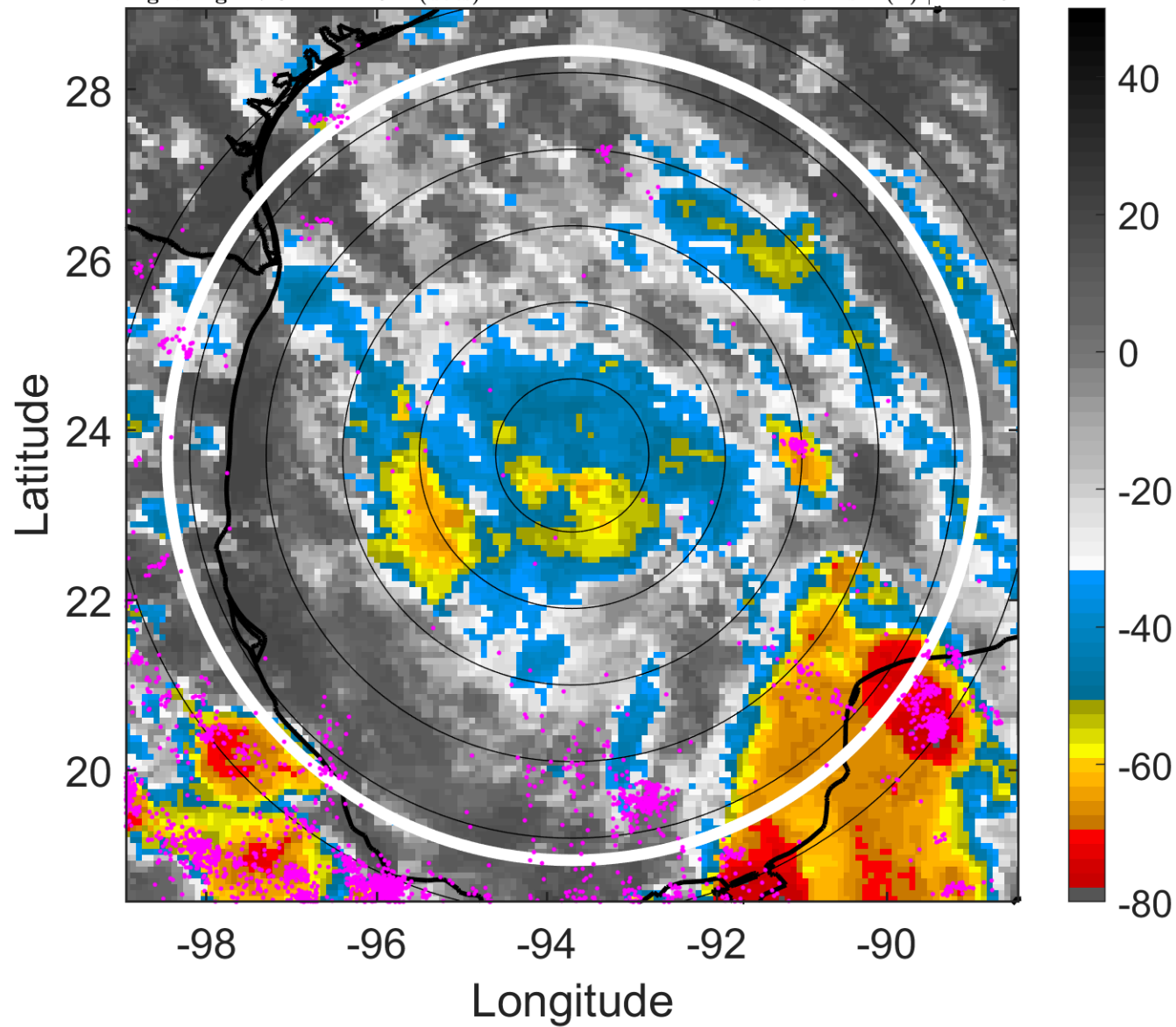
t: 2010070800 (17.8 LT)

Lightning: 17.8 LT  $\pm$  1.5 h (dots)

PT: LLCP | EA: ACT

02L (TWO) | 30 kt TD

S: 2.7 m s<sup>-1</sup> (L) | H: 125°



### 6-h IR BT Differences & Lightning

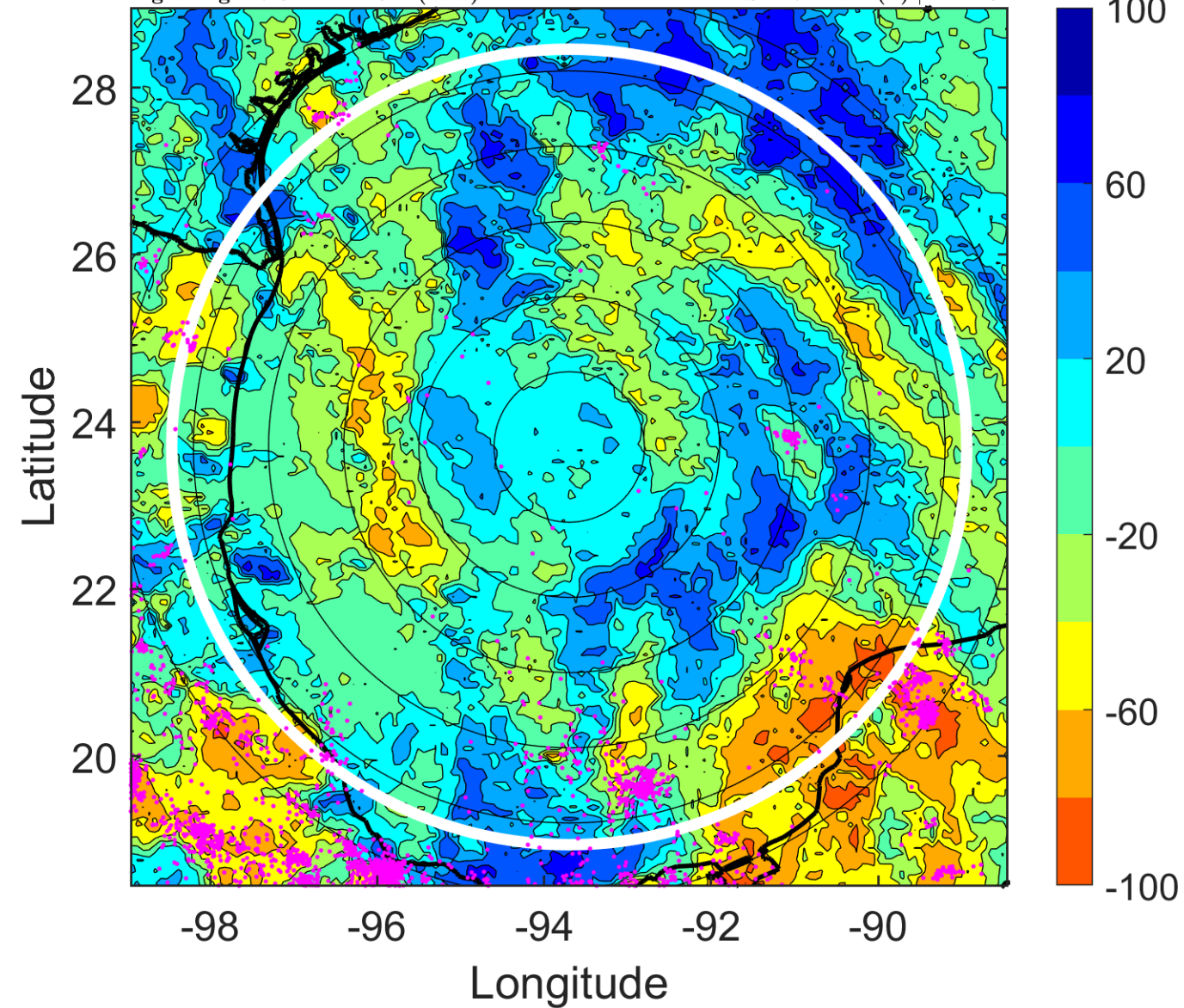
$\Delta$ t: 2010070800 (17.8 LT) - 2010070718 (11.8 LT)

Lightning: 17.8 LT  $\pm$  1.5 h (dots)

PT: LLCP | EA: ACT

02L (TWO) | 30 kt TD

S: 2.7 m s<sup>-1</sup> (L) | H: 125°



### IR BT & Lightning

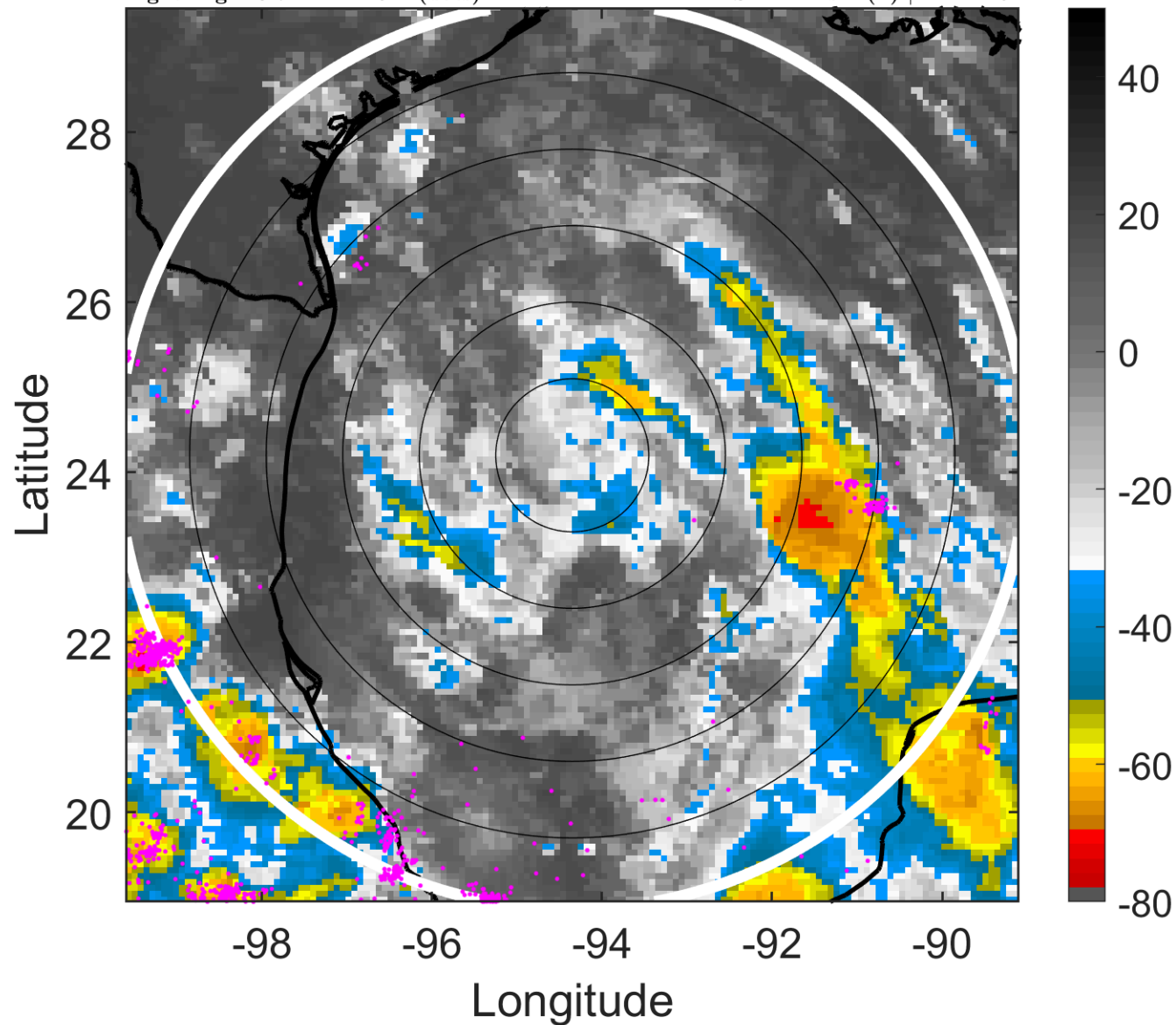
t: 2010070803 (20.7 LT)

Lightning: 20.7 LT  $\pm$  1.5 h (dots)

PT: LLCP | EA: ACT

02L (TWO) | 30 kt TD

S: 2.4 m s<sup>-1</sup> (L) | H: 142.5°



### 6-h IR BT Differences & Lightning

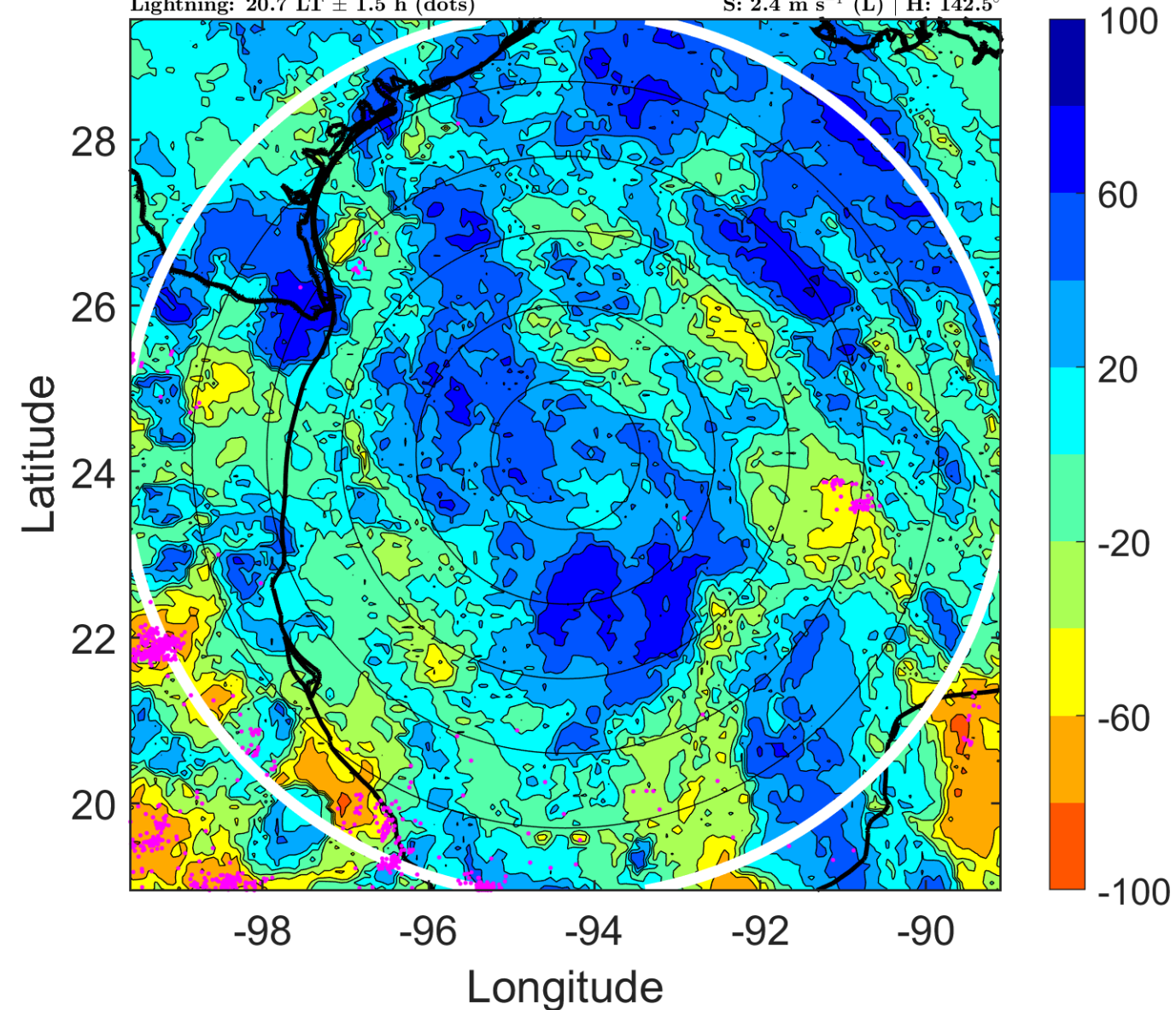
$\Delta$ t: 2010070803 (20.7 LT) - 2010070721 (14.8 LT)

Lightning: 20.7 LT  $\pm$  1.5 h (dots)

PT: LLCP | EA: ACT

02L (TWO) | 30 kt TD

S: 2.4 m s<sup>-1</sup> (L) | H: 142.5°





### IR BT & Lightning

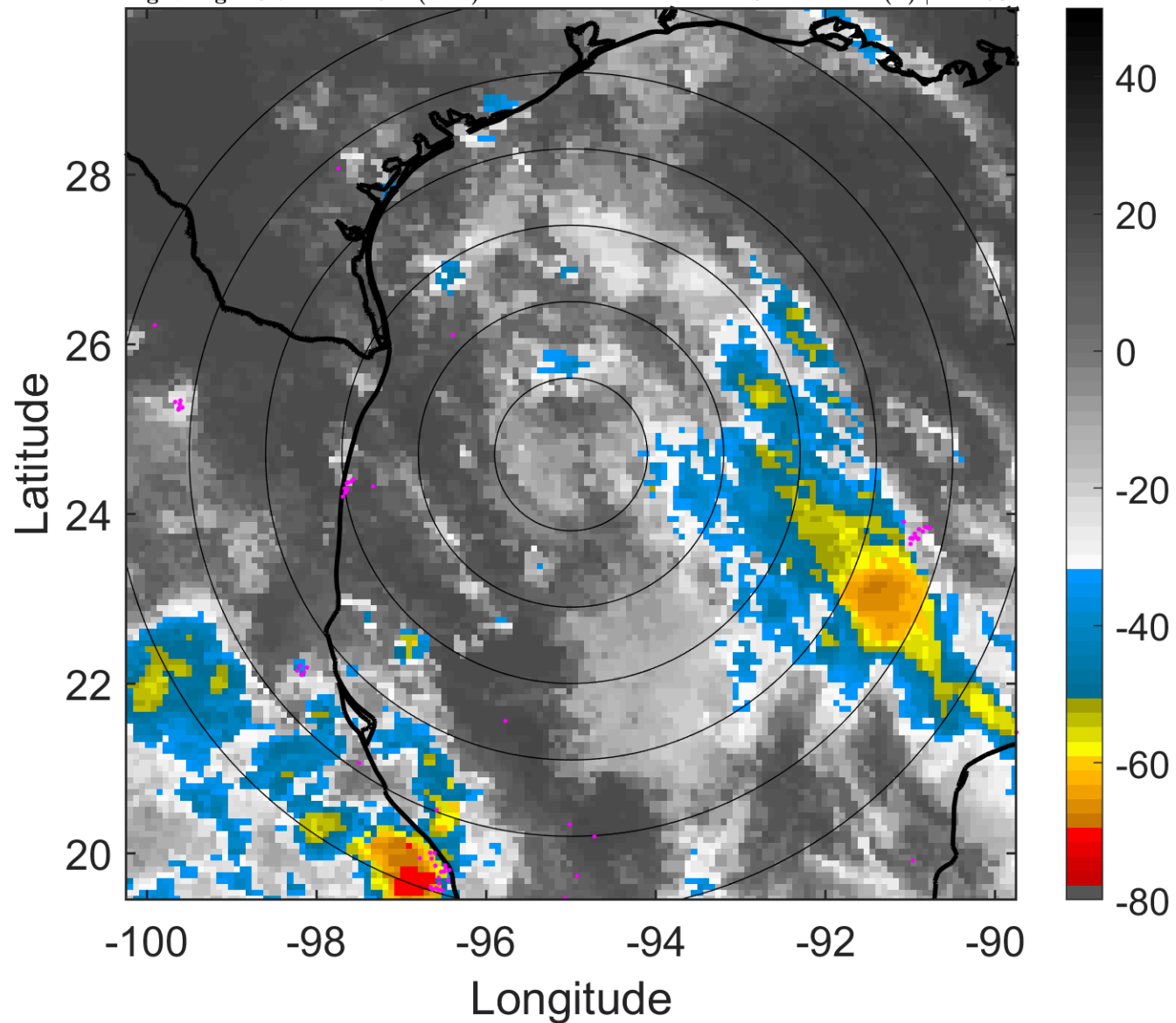
t: 2010070806 (23.7 LT)

Lightning: 23.7 LT  $\pm$  1.5 h (dots)

PT: LLCP | EA: ACT

02L (TWO) | 30 kt TD

S: 2.1 m s<sup>-1</sup> (L) | H: 160°



### 6-h IR BT Differences & Lightning

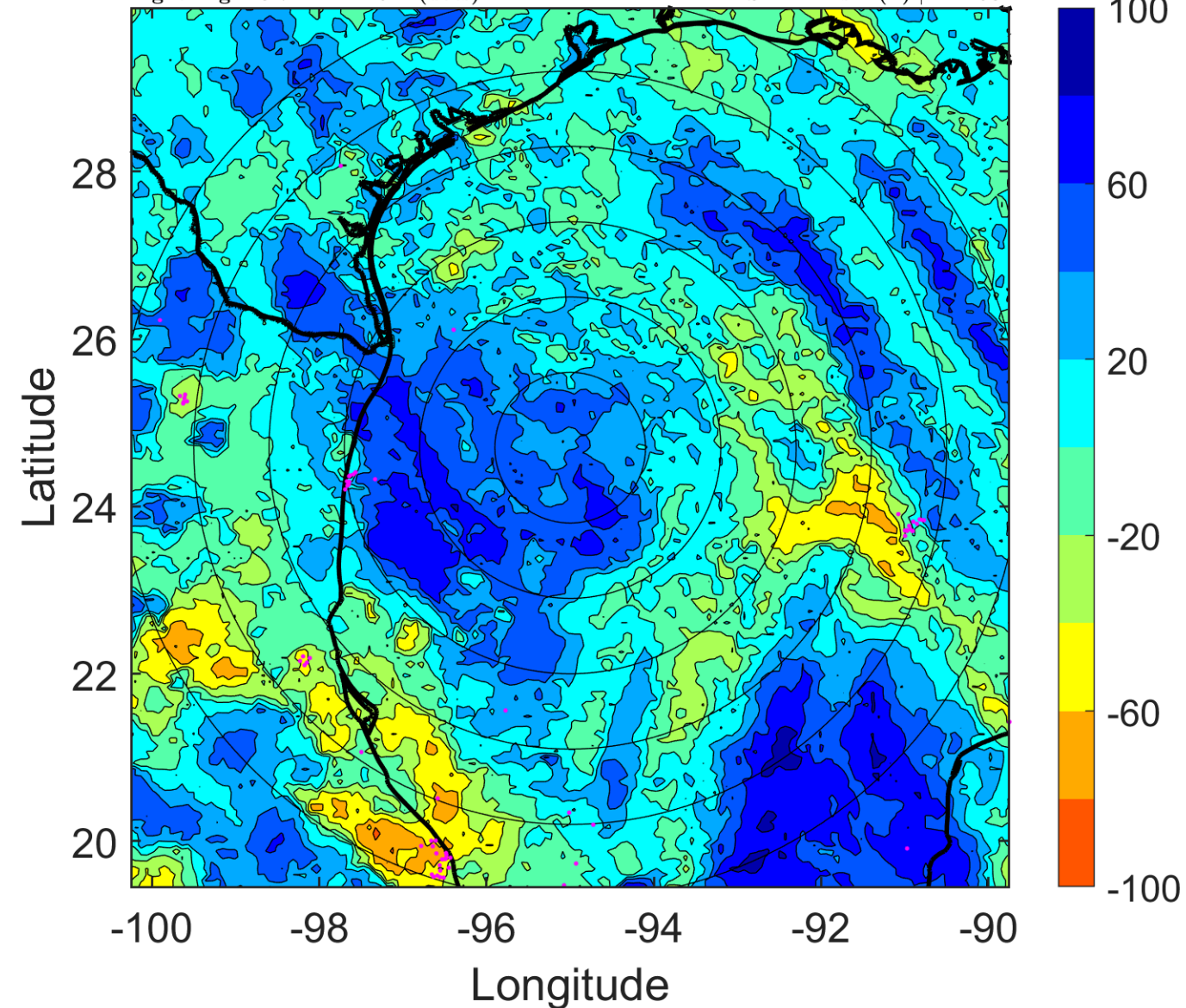
$\Delta$ t: 2010070806 (23.7 LT) - 2010070800 (17.8 LT)

Lightning: 23.7 LT  $\pm$  1.5 h (dots)

PT: LLCP | EA: ACT

02L (TWO) | 30 kt TD

S: 2.1 m s<sup>-1</sup> (L) | H: 160°



### IR BT & Lightning

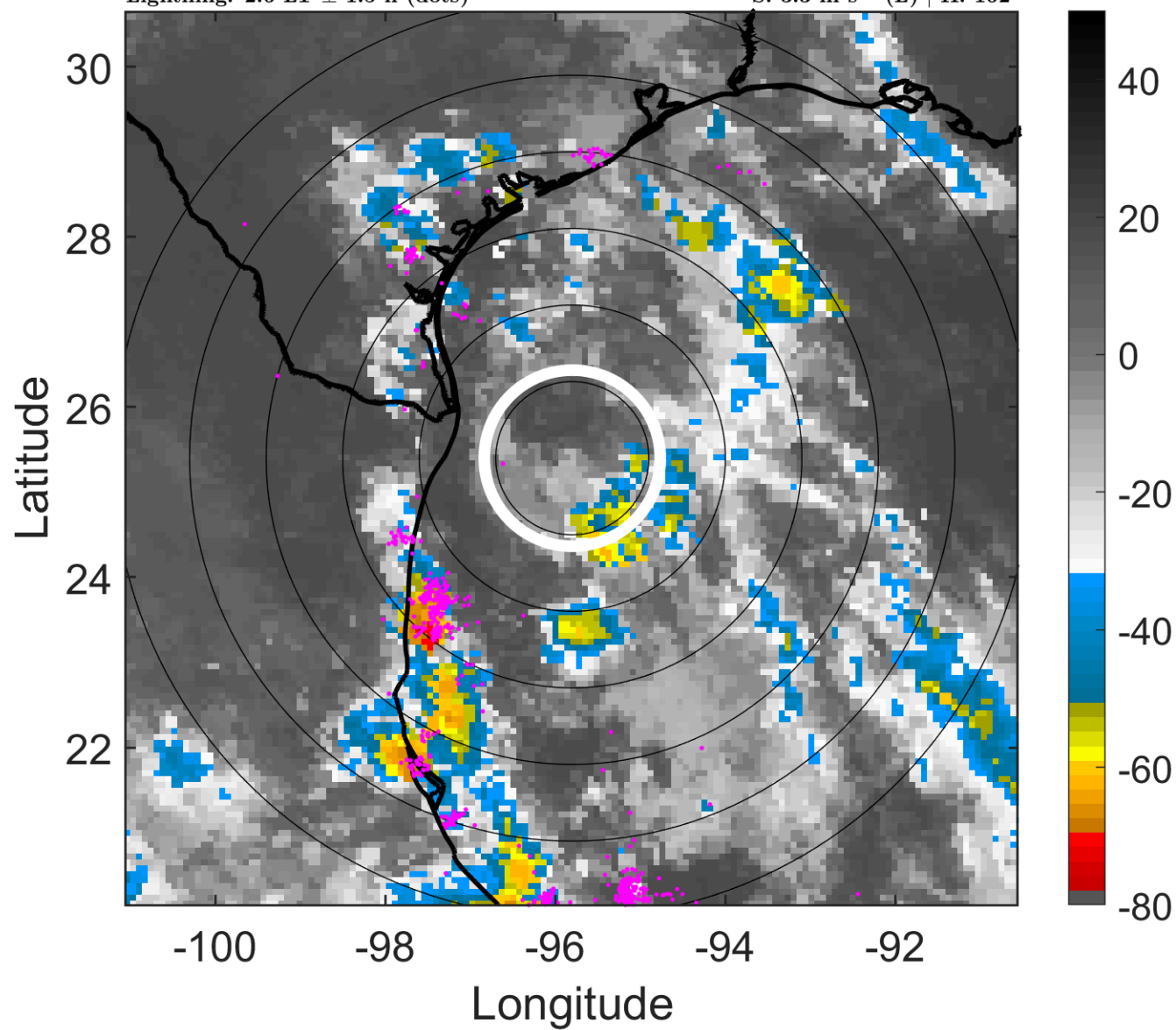
t: 2010070809 (2.6 LT)

Lightning: 2.6 LT  $\pm$  1.5 h (dots)

LAND EFFECTS

02L (TWO) | 30 kt TD

S: 3.3 m s<sup>-1</sup> (L) | H: 162°



### 6-h IR BT Differences & Lightning

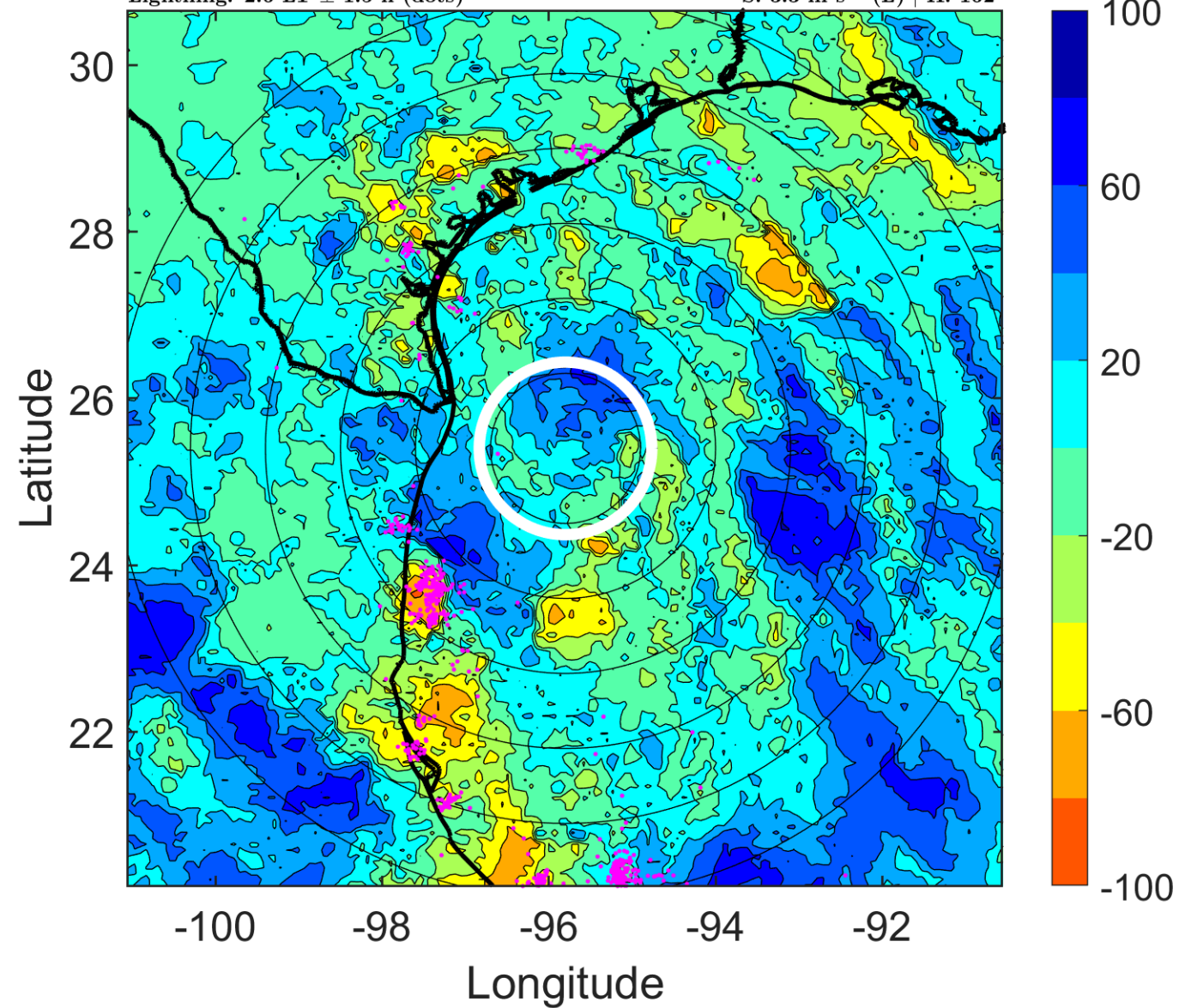
$\Delta$ t: 2010070809 (2.6 LT) - 2010070803 (20.7 LT)

Lightning: 2.6 LT  $\pm$  1.5 h (dots)

LAND EFFECTS

02L (TWO) | 30 kt TD

S: 3.3 m s<sup>-1</sup> (L) | H: 162°





### IR BT & Lightning

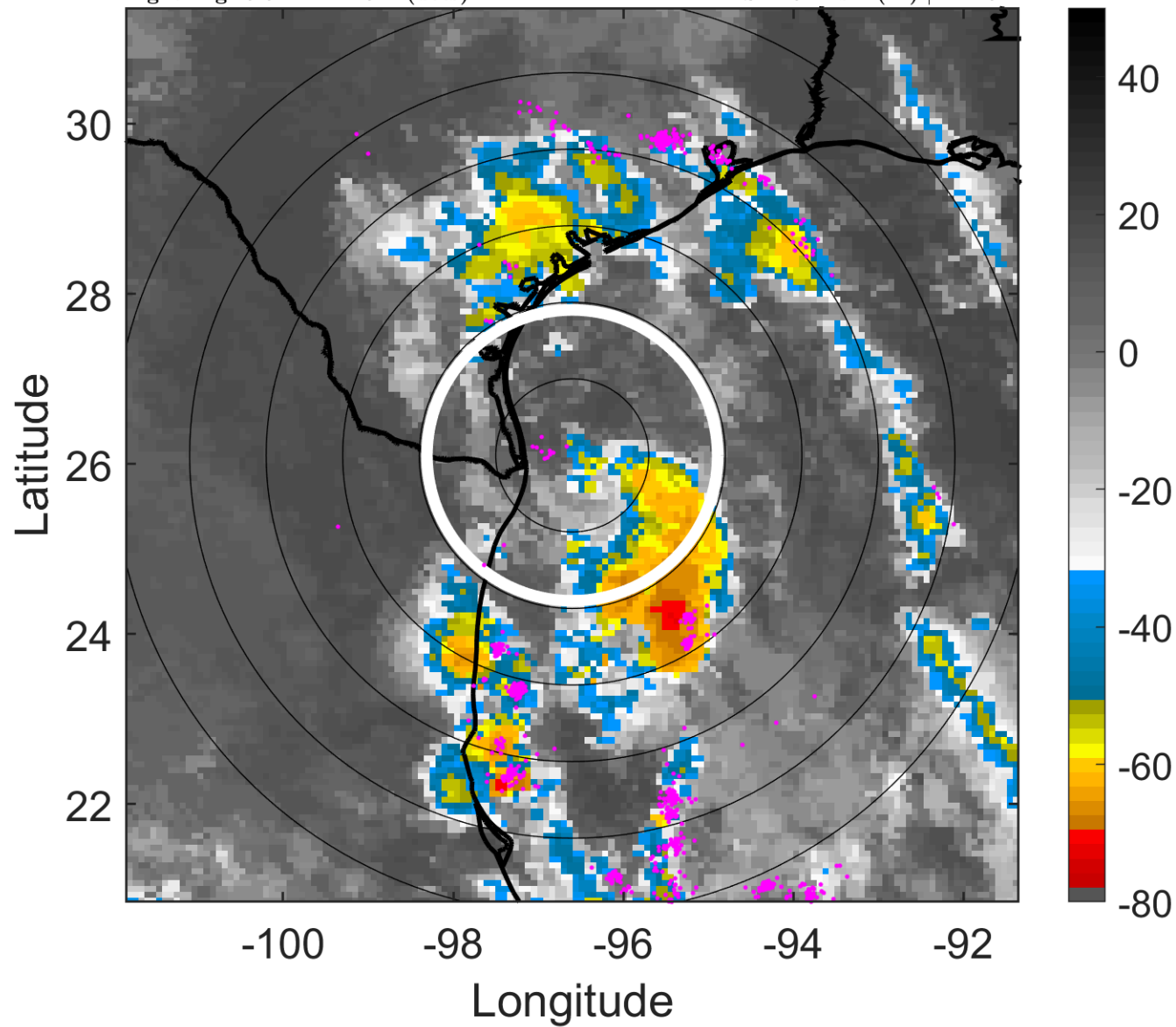
t: 2010070812 (5.6 LT)

Lightning: 5.6 LT  $\pm$  1.5 h (dots)

LAND EFFECTS

02L (TWO) | 30 kt TD

S: 4.6 m s<sup>-1</sup> (M) | H: 164°



### 6-h IR BT Differences & Lightning

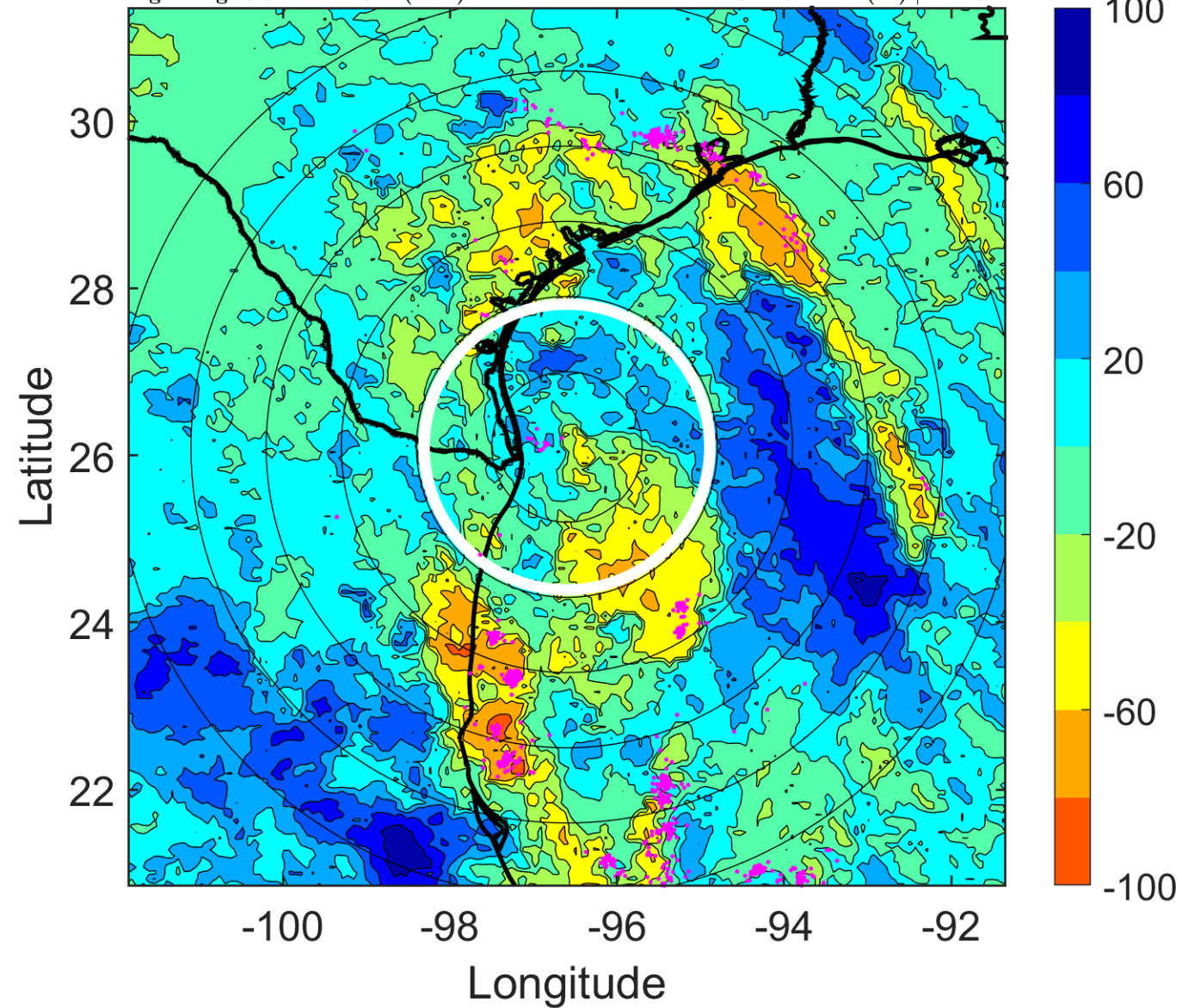
$\Delta$ t: 2010070812 (5.6 LT) - 2010070806 (23.7 LT)

Lightning: 5.6 LT  $\pm$  1.5 h (dots)

LAND EFFECTS

02L (TWO) | 30 kt TD

S: 4.6 m s<sup>-1</sup> (M) | H: 164°



### IR BT & Lightning

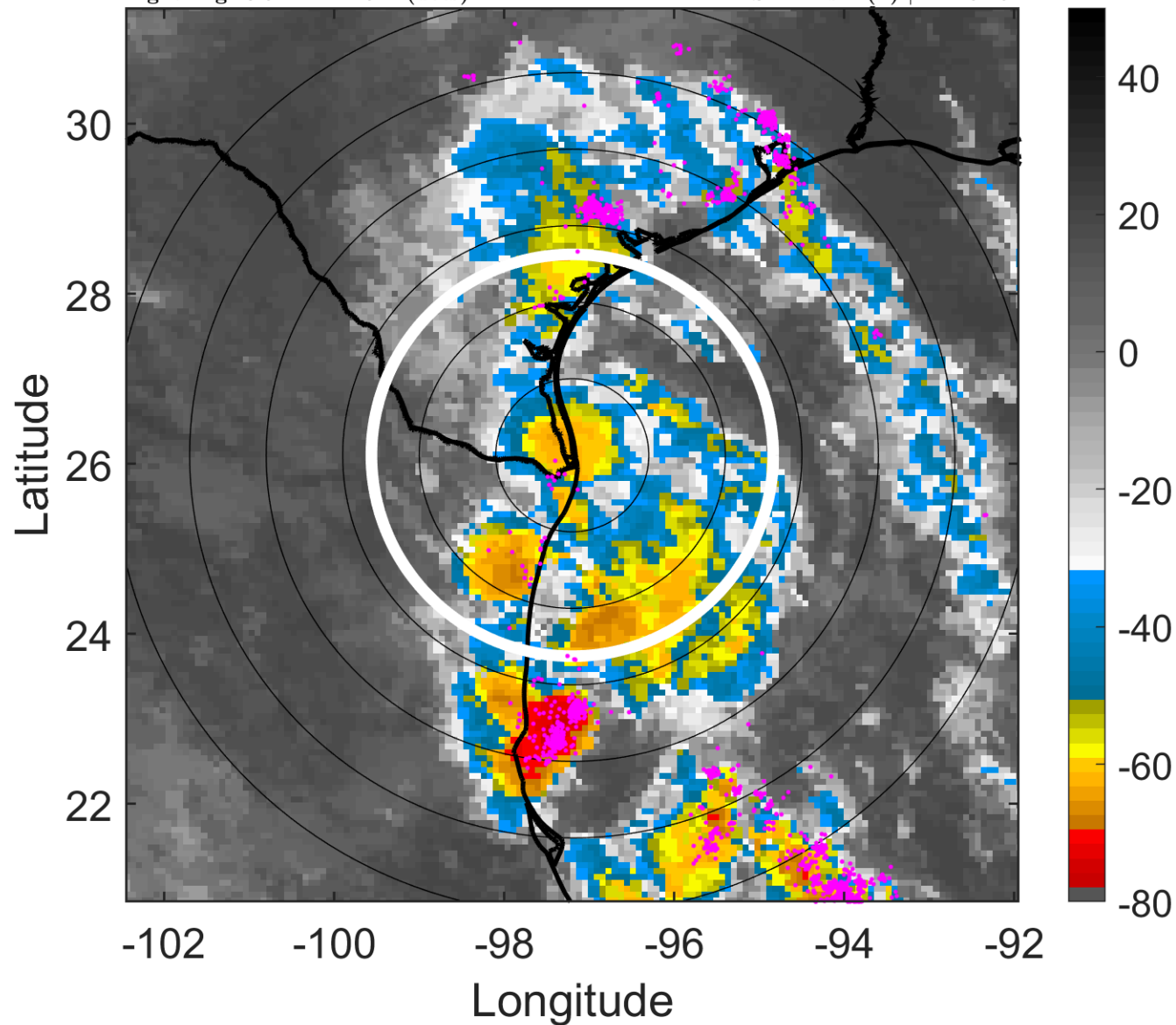
t: 2010070815 (8.5 LT)

Lightning: 8.5 LT  $\pm$  1.5 h (dots)

LAND EFFECTS

02L (TWO) | 27.5 kt TD

S: 4 m s<sup>-1</sup> (L) | H: 161.5°



### 6-h IR BT Differences & Lightning

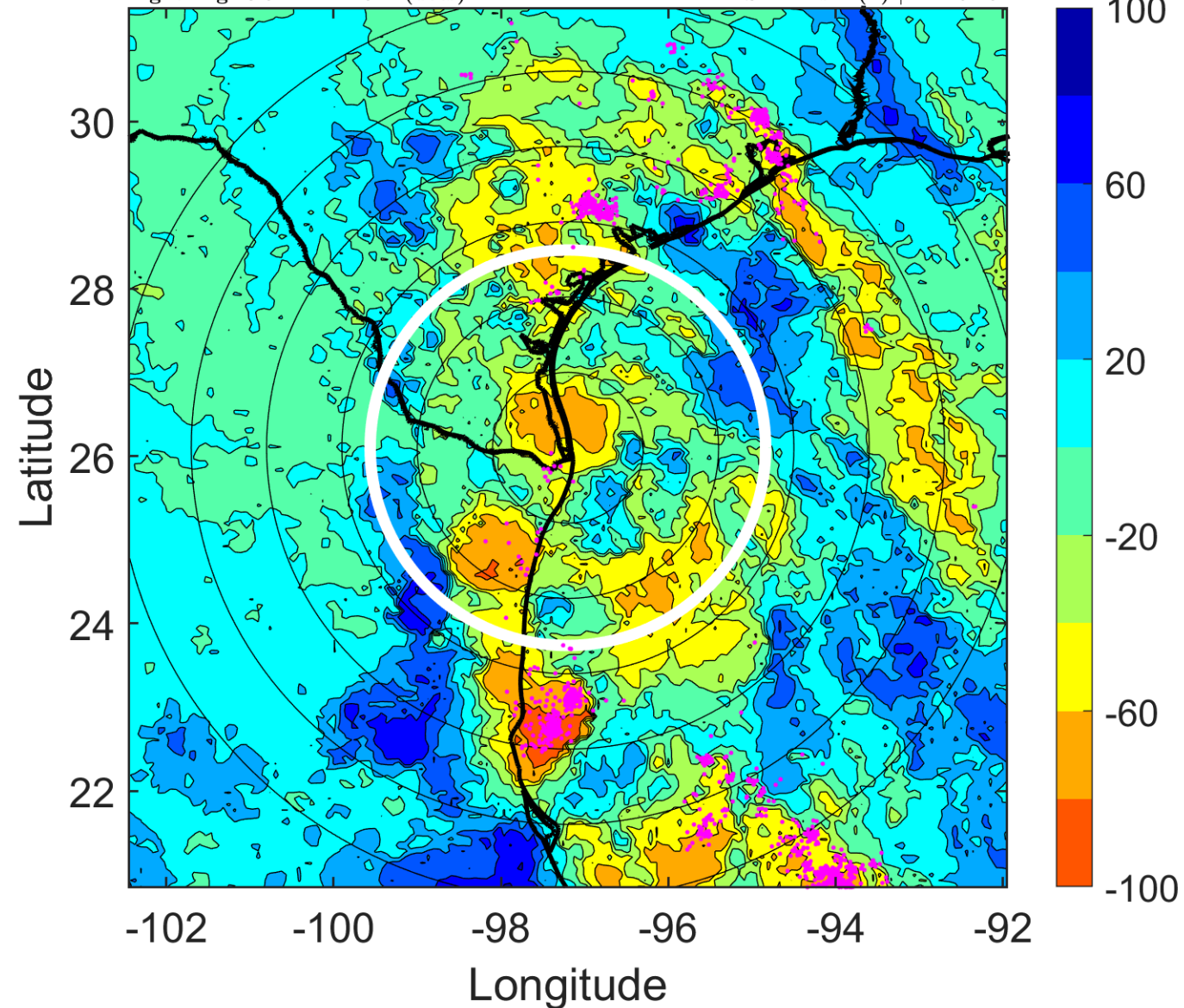
$\Delta$ t: 2010070815 (8.5 LT) - 2010070809 (2.6 LT)

Lightning: 8.5 LT  $\pm$  1.5 h (dots)

LAND EFFECTS

02L (TWO) | 27.5 kt TD

S: 4 m s<sup>-1</sup> (L) | H: 161.5°





### IR BT & Lightning

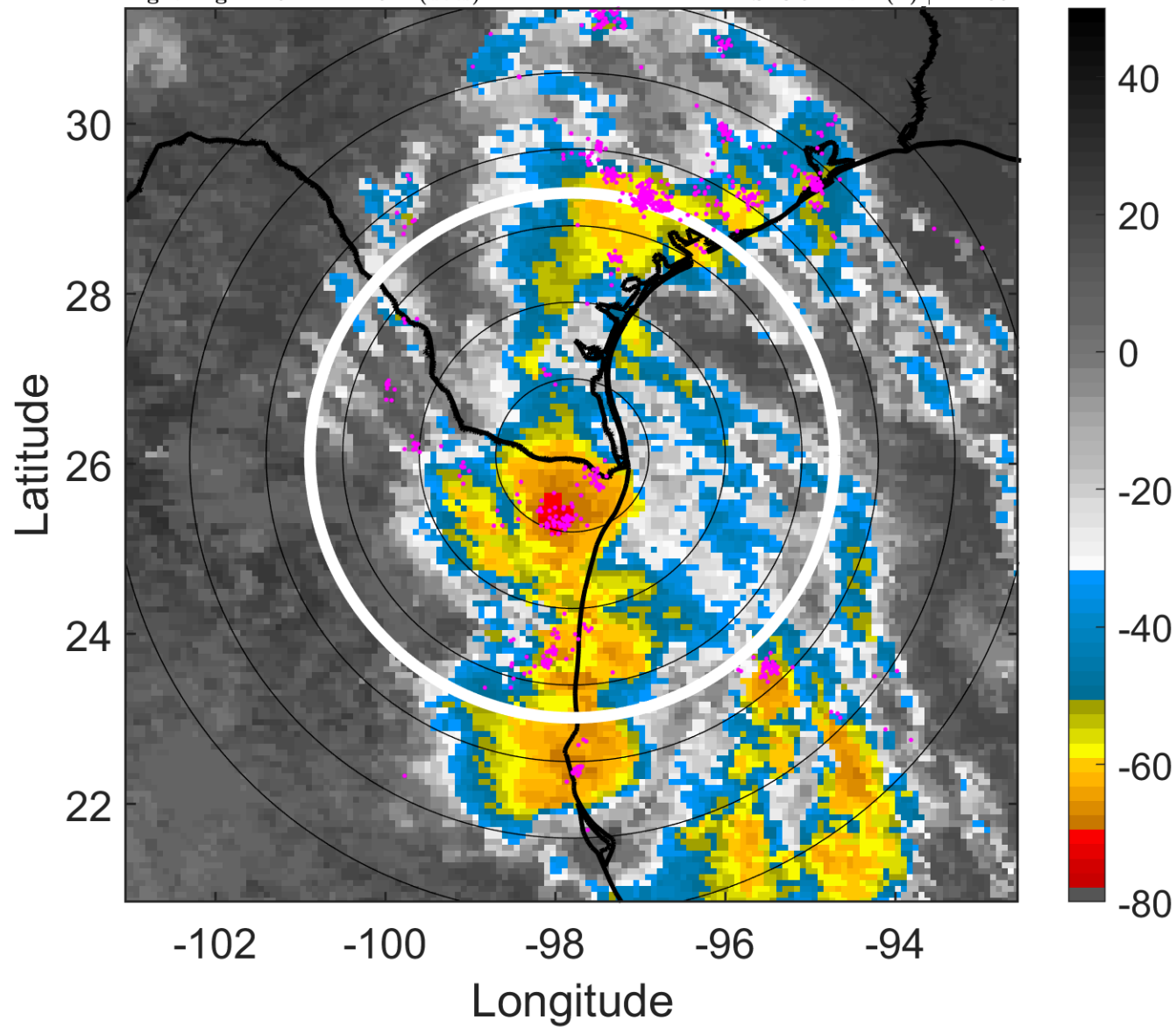
t: 2010070818 (11.5 LT)

Lightning: 11.5 LT  $\pm$  1.5 h (dots)

LAND EFFECTS

02L (TWO) | 25 kt TD

S: 3.5 m s<sup>-1</sup> (L) | H: 159°



### 6-h IR BT Differences & Lightning

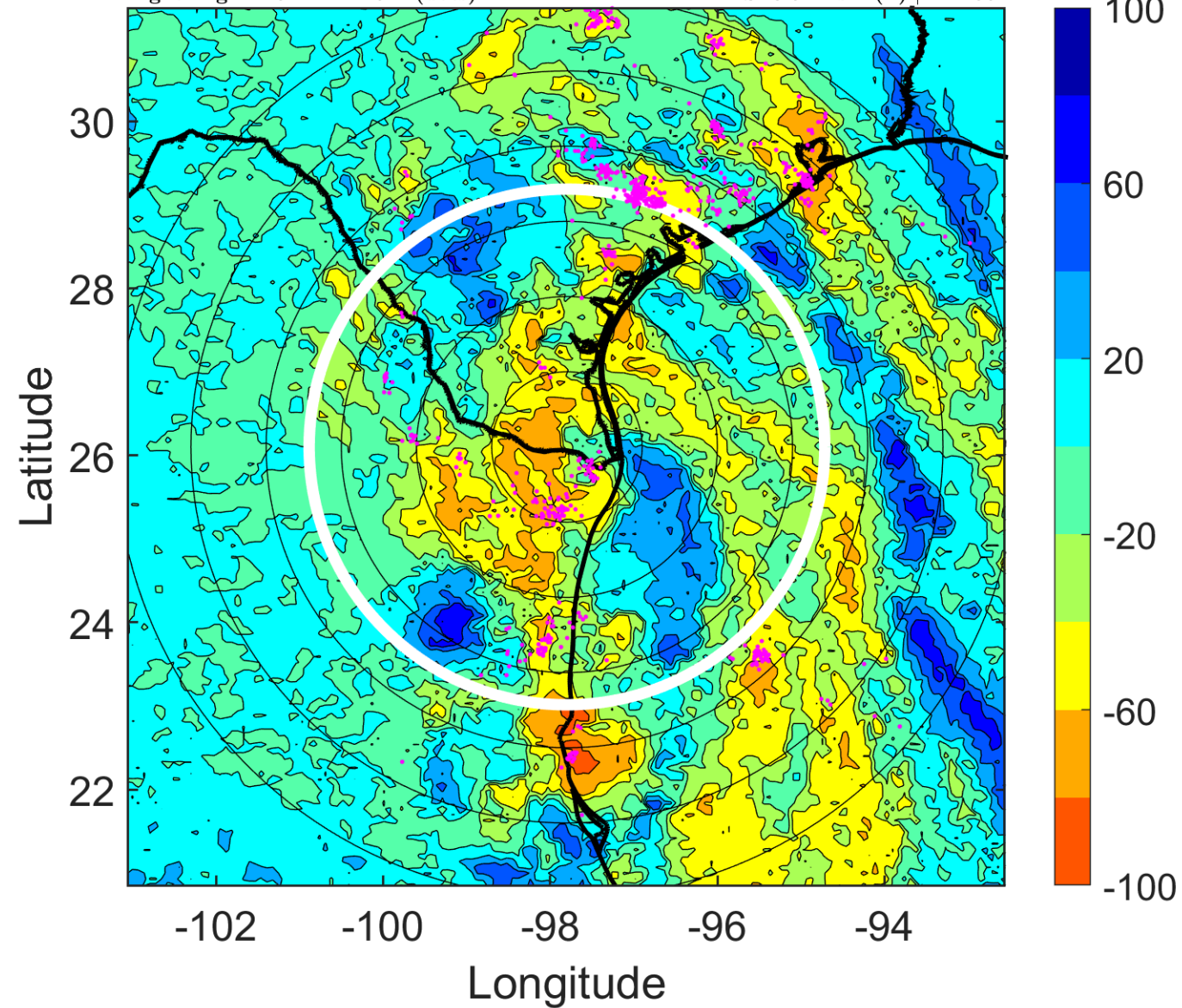
$\Delta$ t: 2010070818 (11.5 LT) - 2010070812 (5.6 LT)

Lightning: 11.5 LT  $\pm$  1.5 h (dots)

LAND EFFECTS

02L (TWO) | 25 kt TD

S: 3.5 m s<sup>-1</sup> (L) | H: 159°



### IR BT & Lightning

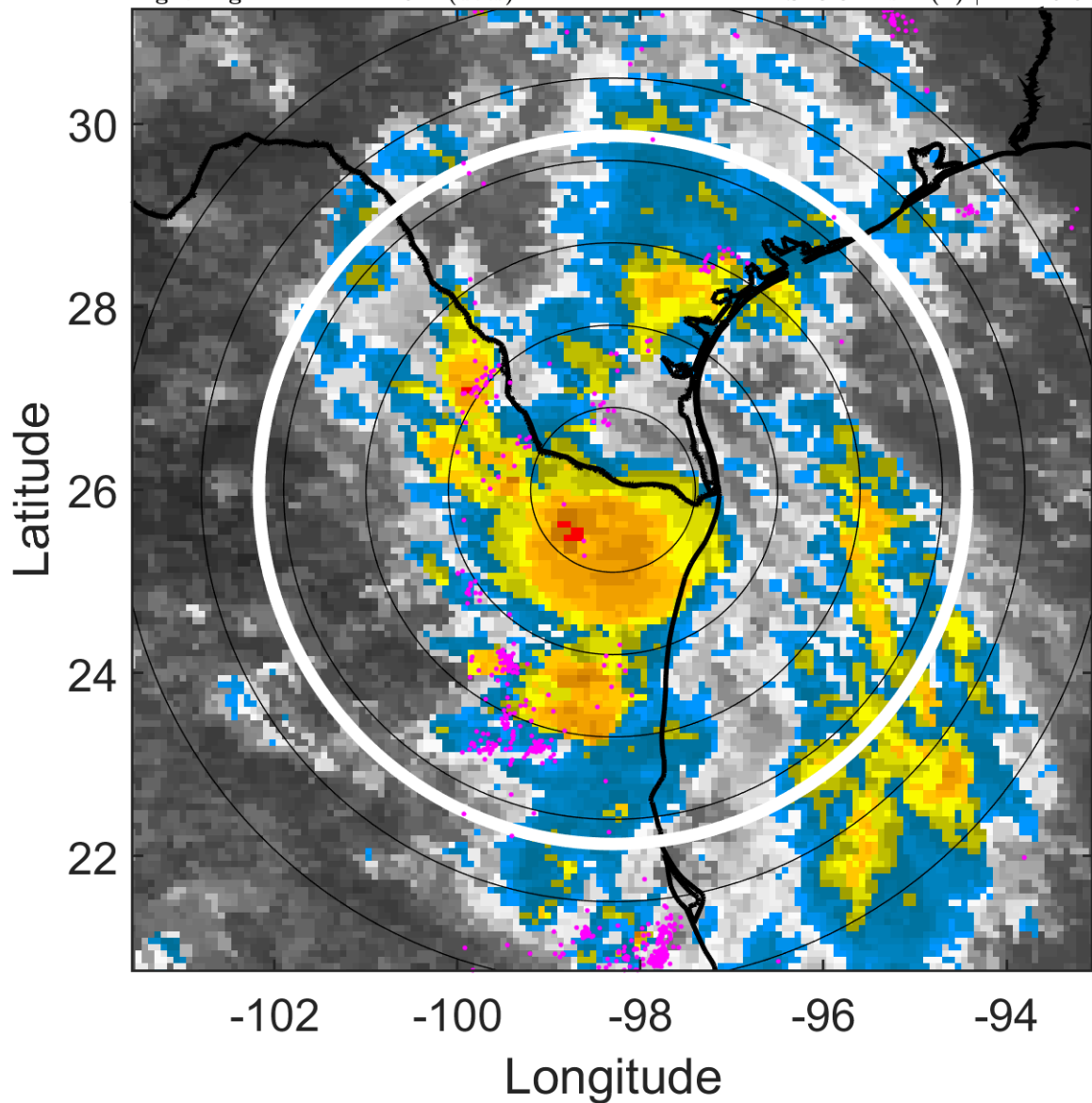
t: 2010070821 (14.4 LT)

Lightning: 14.4 LT  $\pm$  1.5 h (dots)

LAND EFFECTS

02L (TWO) | 25 kt TD

S: 3.3 m s<sup>-1</sup> (L) | H: 149.5°



### 6-h IR BT Differences & Lightning

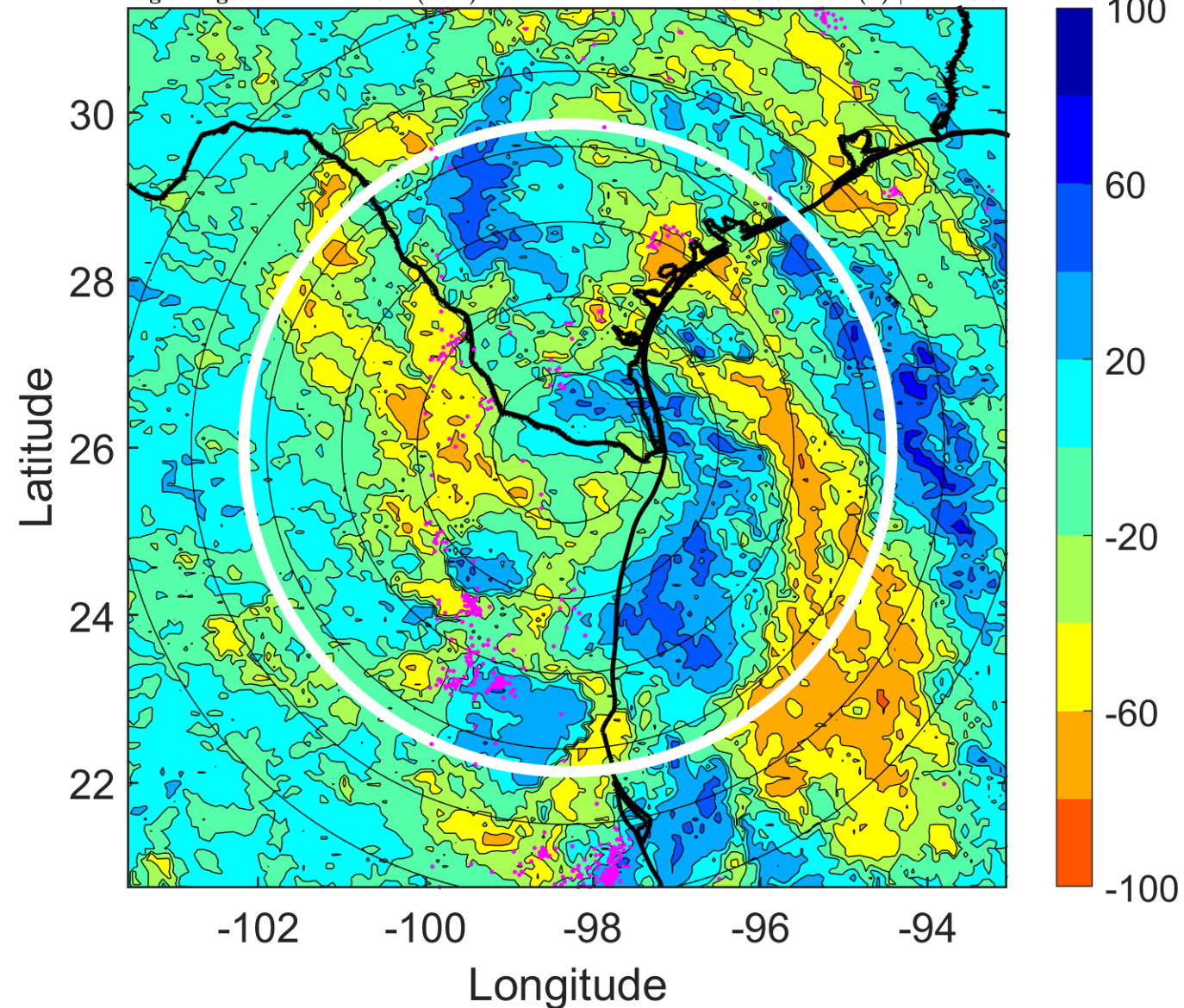
$\Delta$ t: 2010070821 (14.4 LT) - 2010070815 (8.5 LT)

Lightning: 14.4 LT  $\pm$  1.5 h (dots)

LAND EFFECTS

02L (TWO) | 25 kt TD

S: 3.3 m s<sup>-1</sup> (L) | H: 149.5°





### IR BT & Lightning

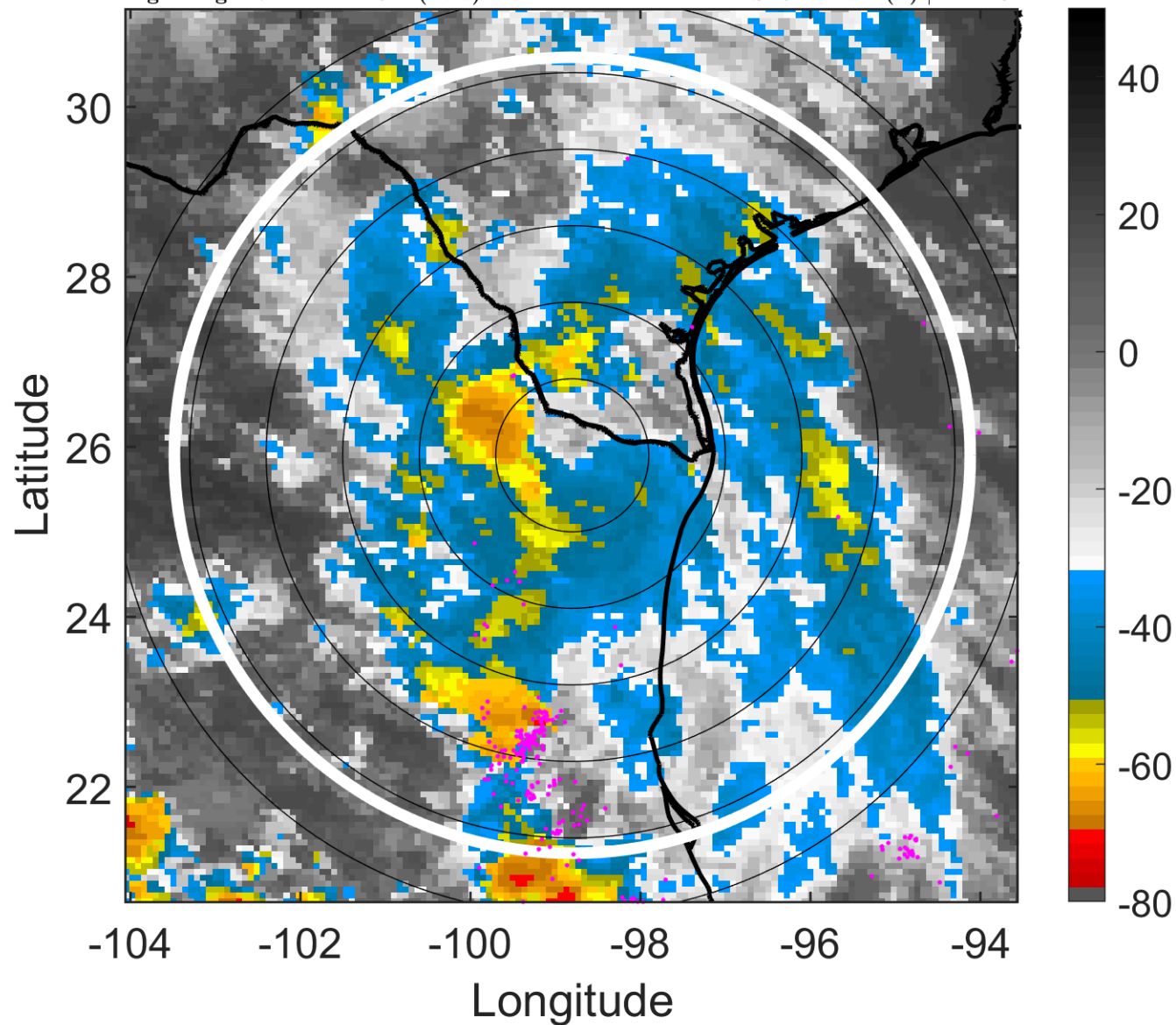
t: 2010070900 (17.4 LT)

Lightning: 17.4 LT  $\pm$  1.5 h (dots)

LAND EFFECTS

02L (TWO) | 25 kt TD

S: 3.2 m s<sup>-1</sup> (L) | H: 140°



### 6-h IR BT Differences & Lightning

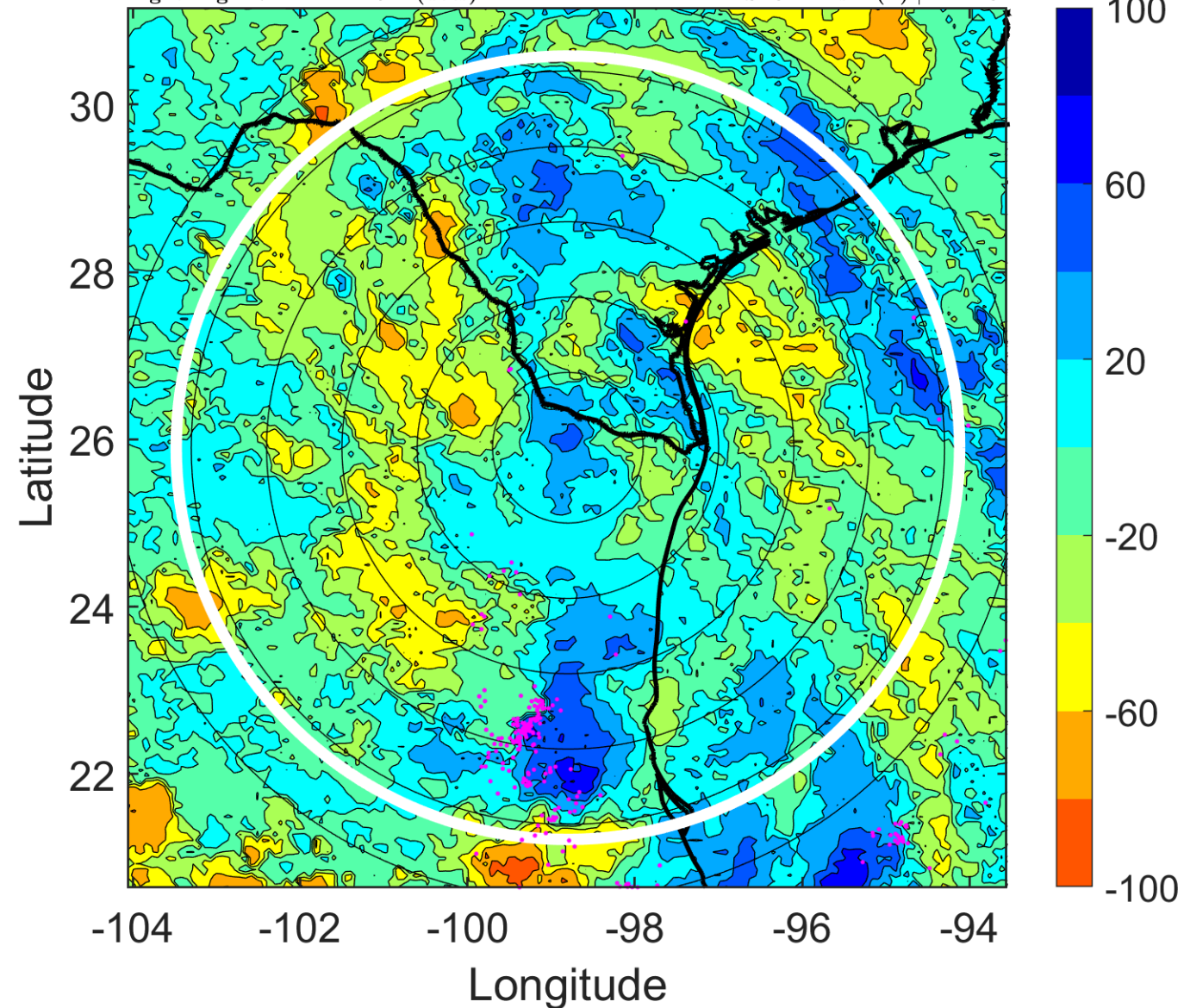
$\Delta$ t: 2010070900 (17.4 LT) - 2010070818 (11.5 LT)

Lightning: 17.4 LT  $\pm$  1.5 h (dots)

LAND EFFECTS

02L (TWO) | 25 kt TD

S: 3.2 m s<sup>-1</sup> (L) | H: 140°



### IR BT & Lightning

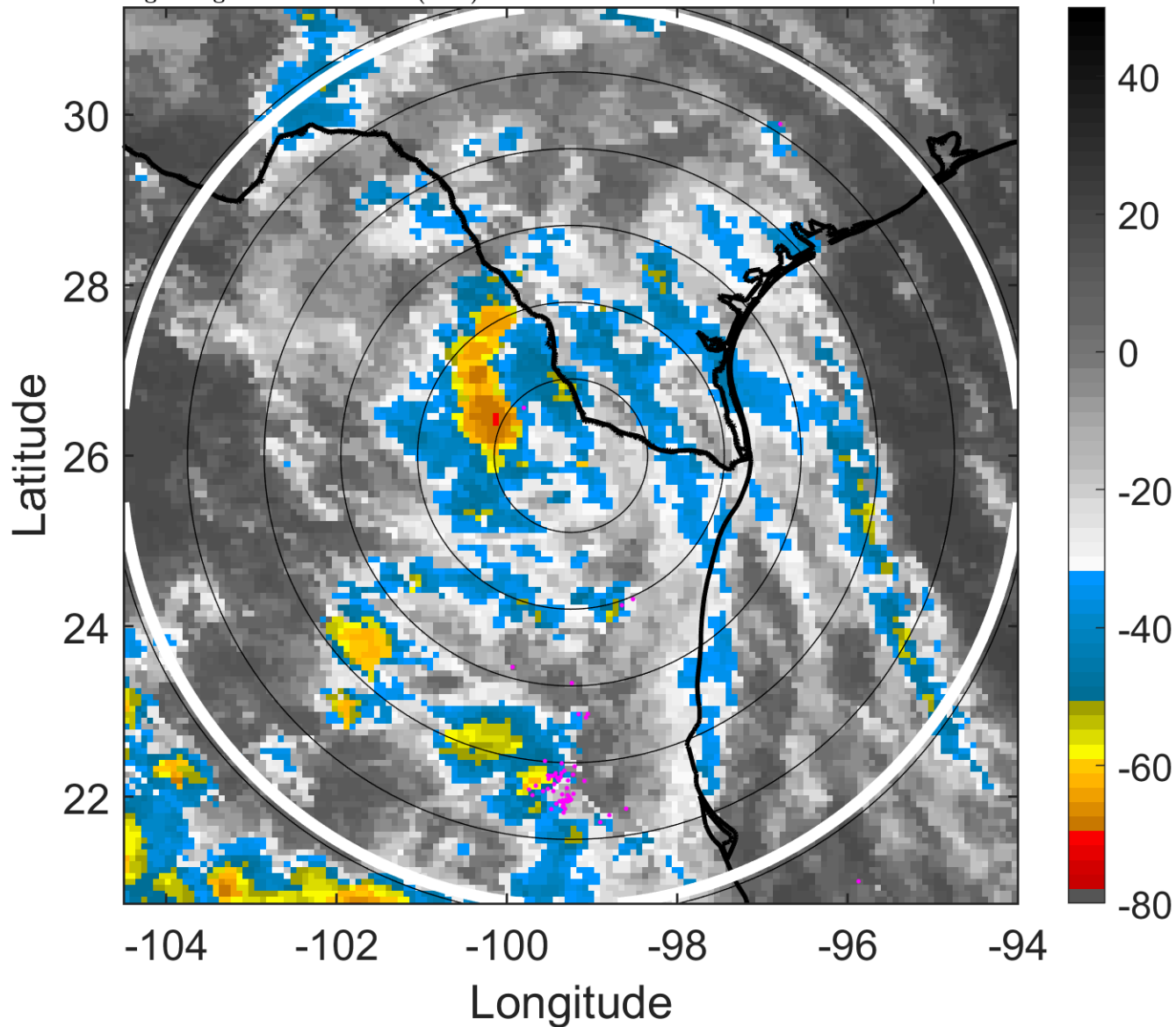
t: 2010070903 (20.4 LT)

Lightning: 20.4 LT  $\pm$  1.5 h (dots)

LAND EFFECTS

02L (TWO) | 22.5 kt TD

S: null | H: null



### 6-h IR BT Differences & Lightning

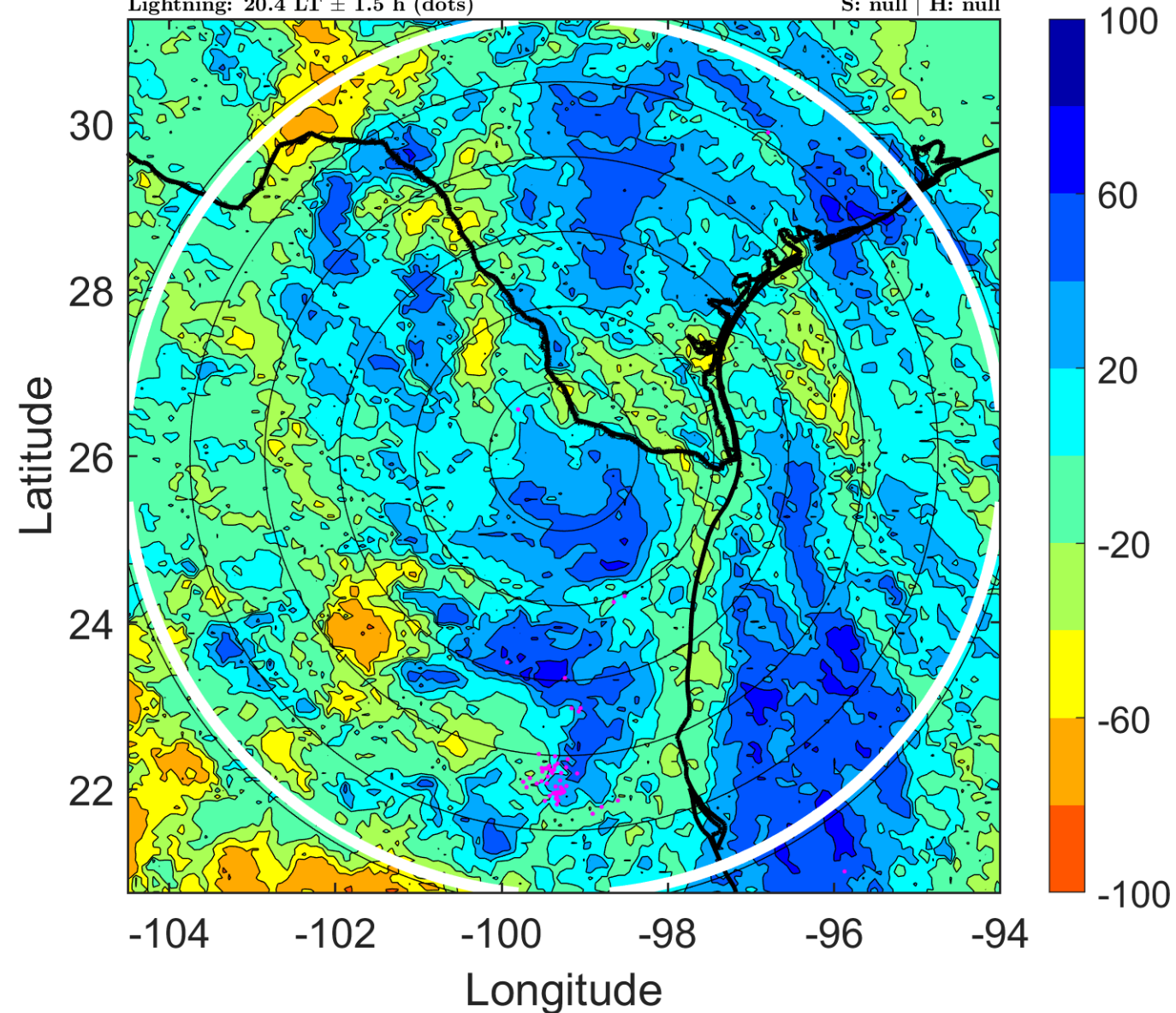
$\Delta$ t: 2010070903 (20.4 LT) - 2010070821 (14.4 LT)

Lightning: 20.4 LT  $\pm$  1.5 h (dots)

LAND EFFECTS

02L (TWO) | 22.5 kt TD

S: null | H: null





### IR BT & Lightning

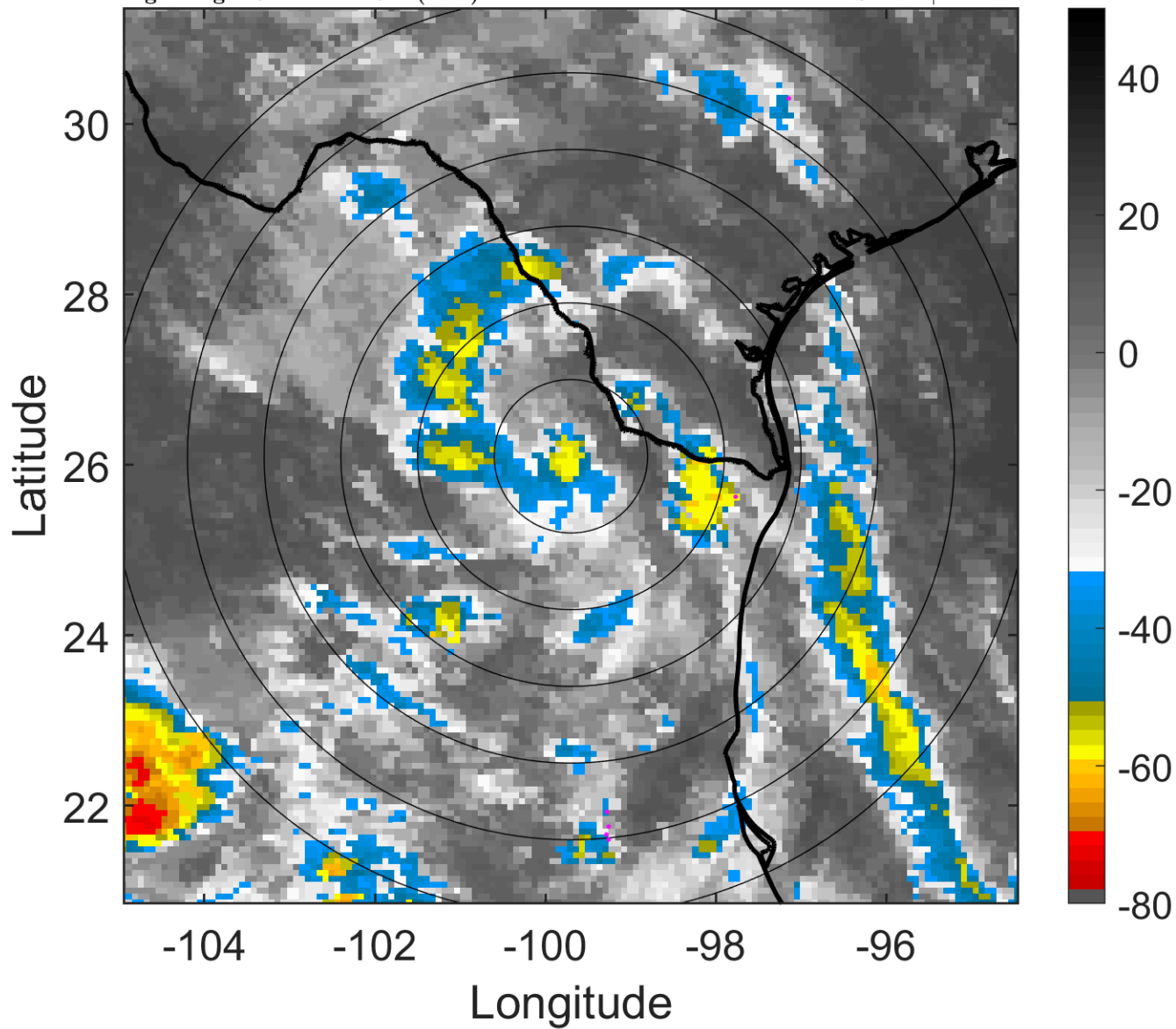
t: 2010070906 (23.4 LT)

Lightning: 23.4 LT  $\pm$  1.5 h (dots)

LAND EFFECTS

02L (TWO) | 20 kt LO

S: null | H: null



### 6-h IR BT Differences & Lightning

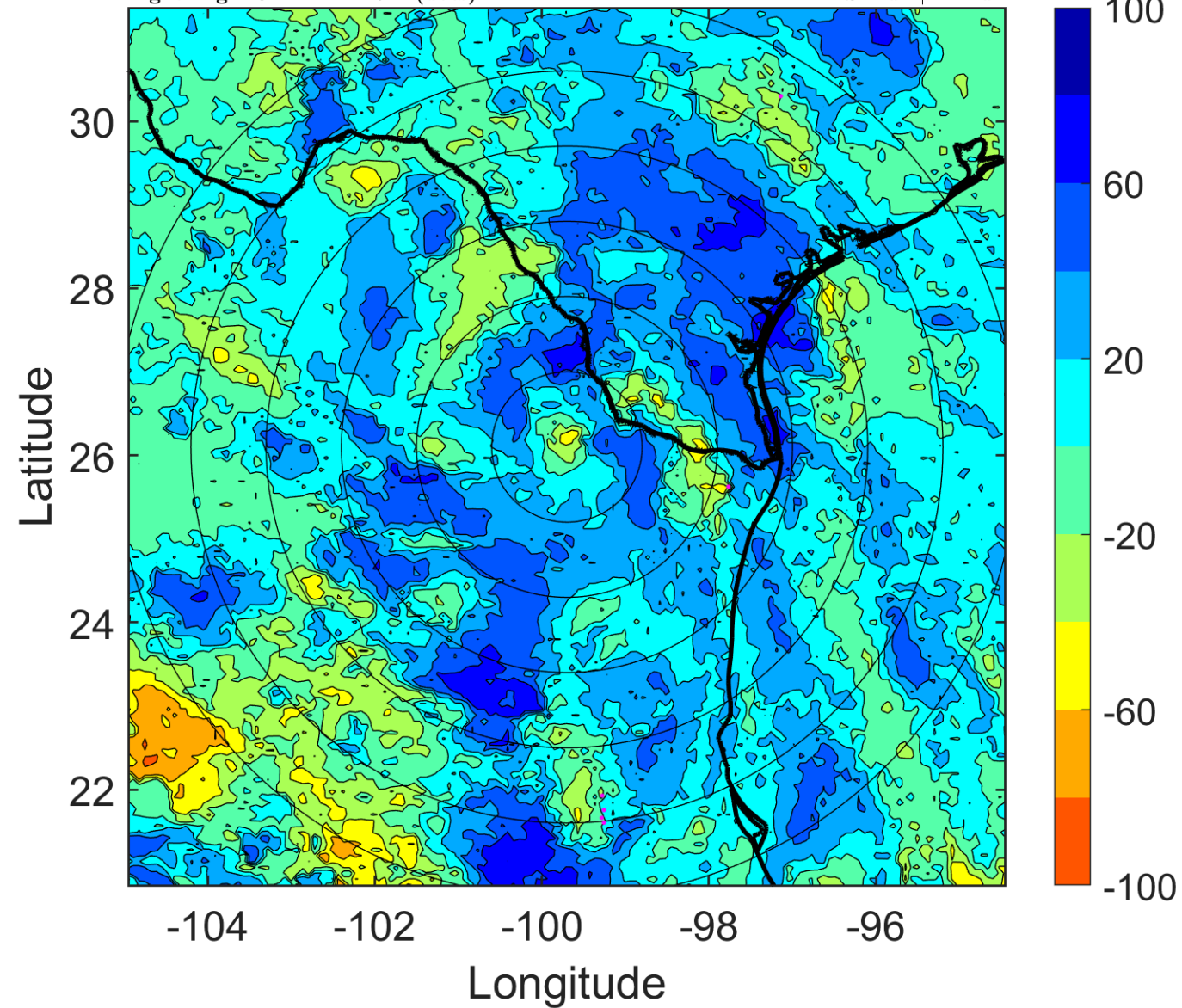
$\Delta$ t: 2010070906 (23.4 LT) - 2010070900 (17.4 LT)

Lightning: 23.4 LT  $\pm$  1.5 h (dots)

LAND EFFECTS

02L (TWO) | 20 kt LO

S: null | H: null



### IR BT & Lightning

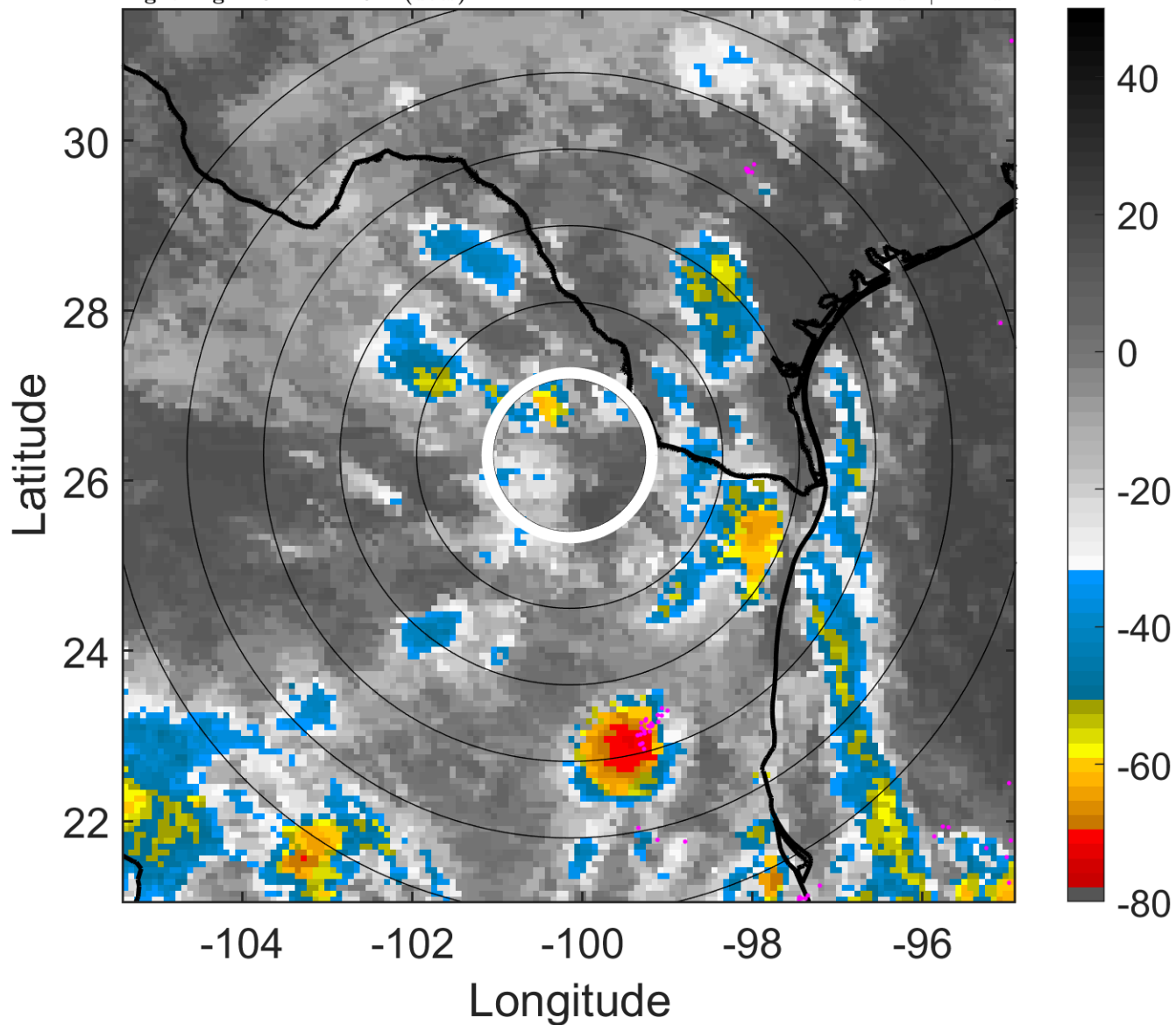
t: 2010070909 (2.3 LT)

Lightning: 2.3 LT  $\pm$  1.5 h (dots)

LAND EFFECTS

02L (TWO) | 20 kt LO

S: null | H: null



### 6-h IR BT Differences & Lightning

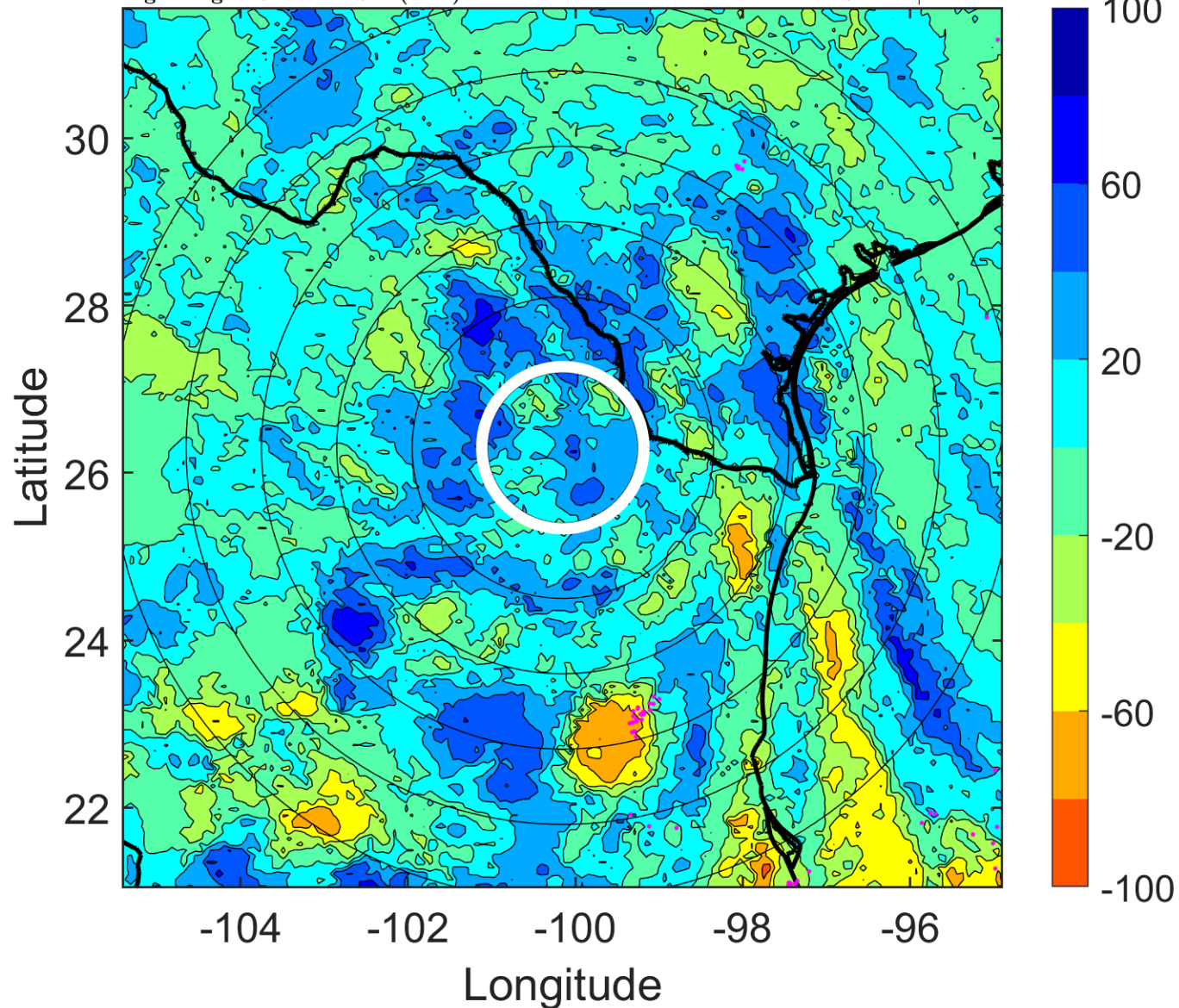
$\Delta$ t: 2010070909 (2.3 LT) - 2010070903 (20.4 LT)

Lightning: 2.3 LT  $\pm$  1.5 h (dots)

LAND EFFECTS

02L (TWO) | 20 kt LO

S: null | H: null





### IR BT & Lightning

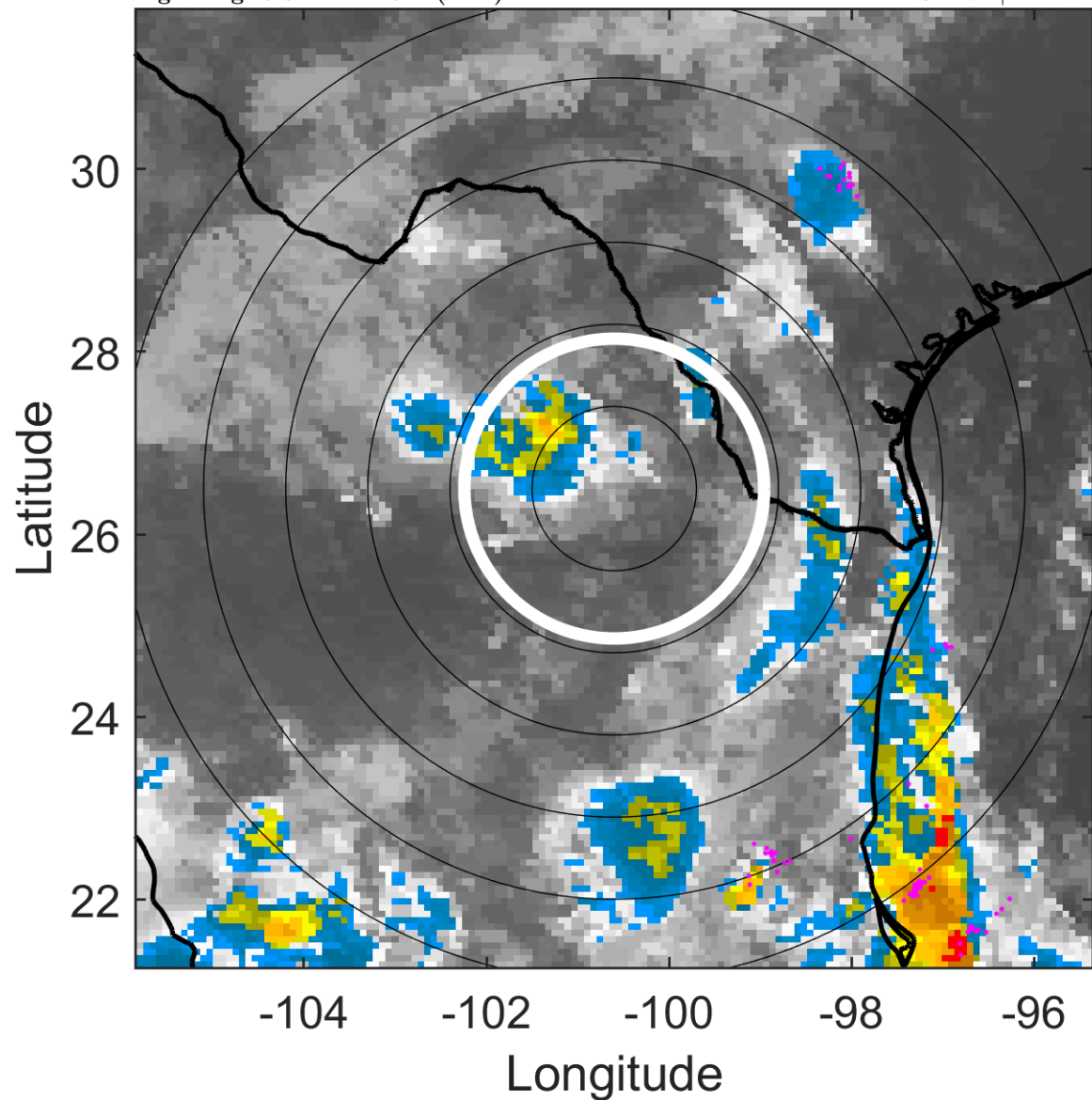
t: 2010070912 (5.3 LT)

Lightning: 5.3 LT  $\pm$  1.5 h (dots)

LAND EFFECTS

02L (TWO) | 20 kt LO

S: null | H: null



### 6-h IR BT Differences & Lightning

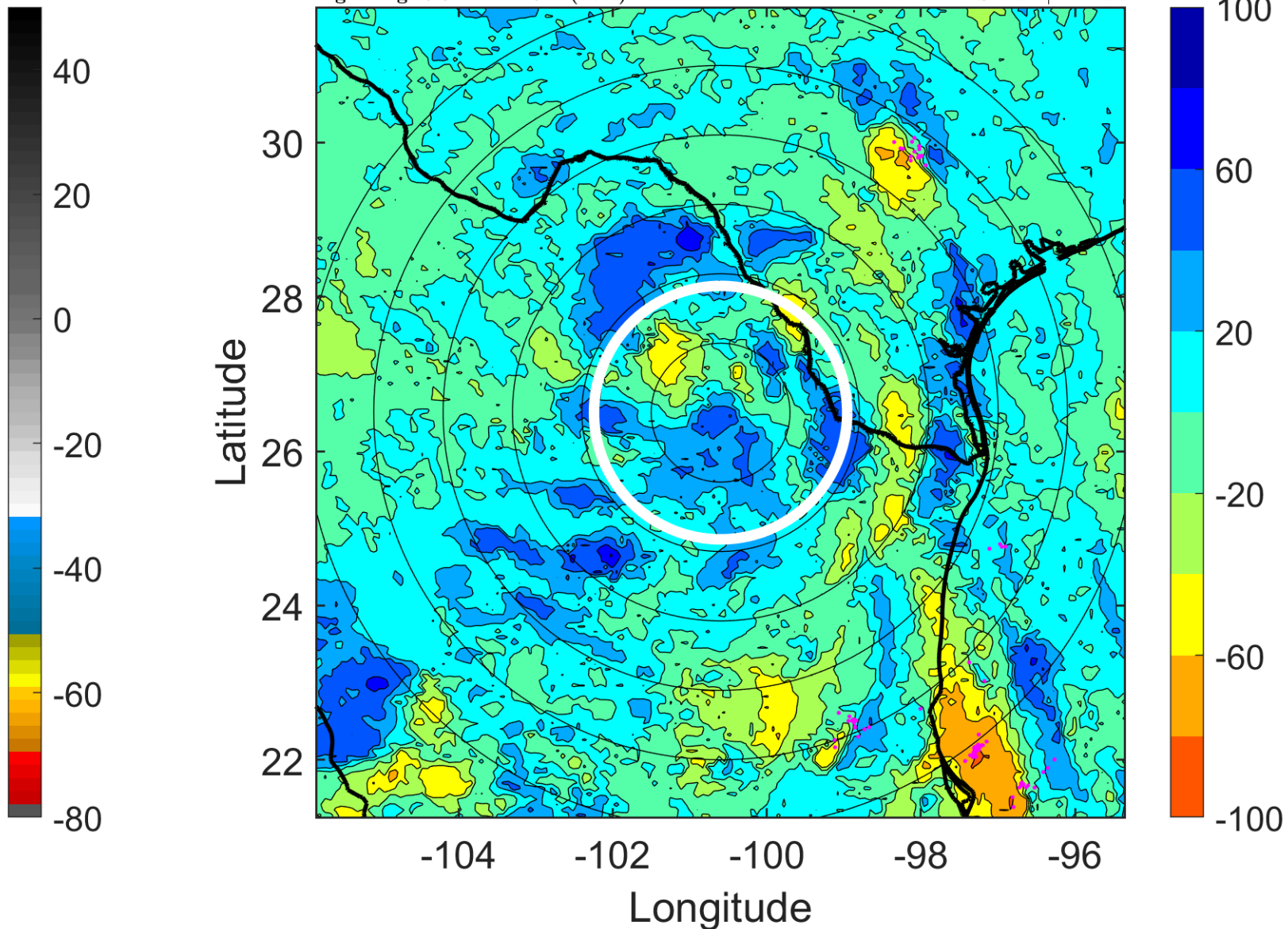
$\Delta$ t: 2010070912 (5.3 LT) - 2010070906 (23.4 LT)

Lightning: 5.3 LT  $\pm$  1.5 h (dots)

LAND EFFECTS

02L (TWO) | 20 kt LO

S: null | H: null



### IR BT & Lightning

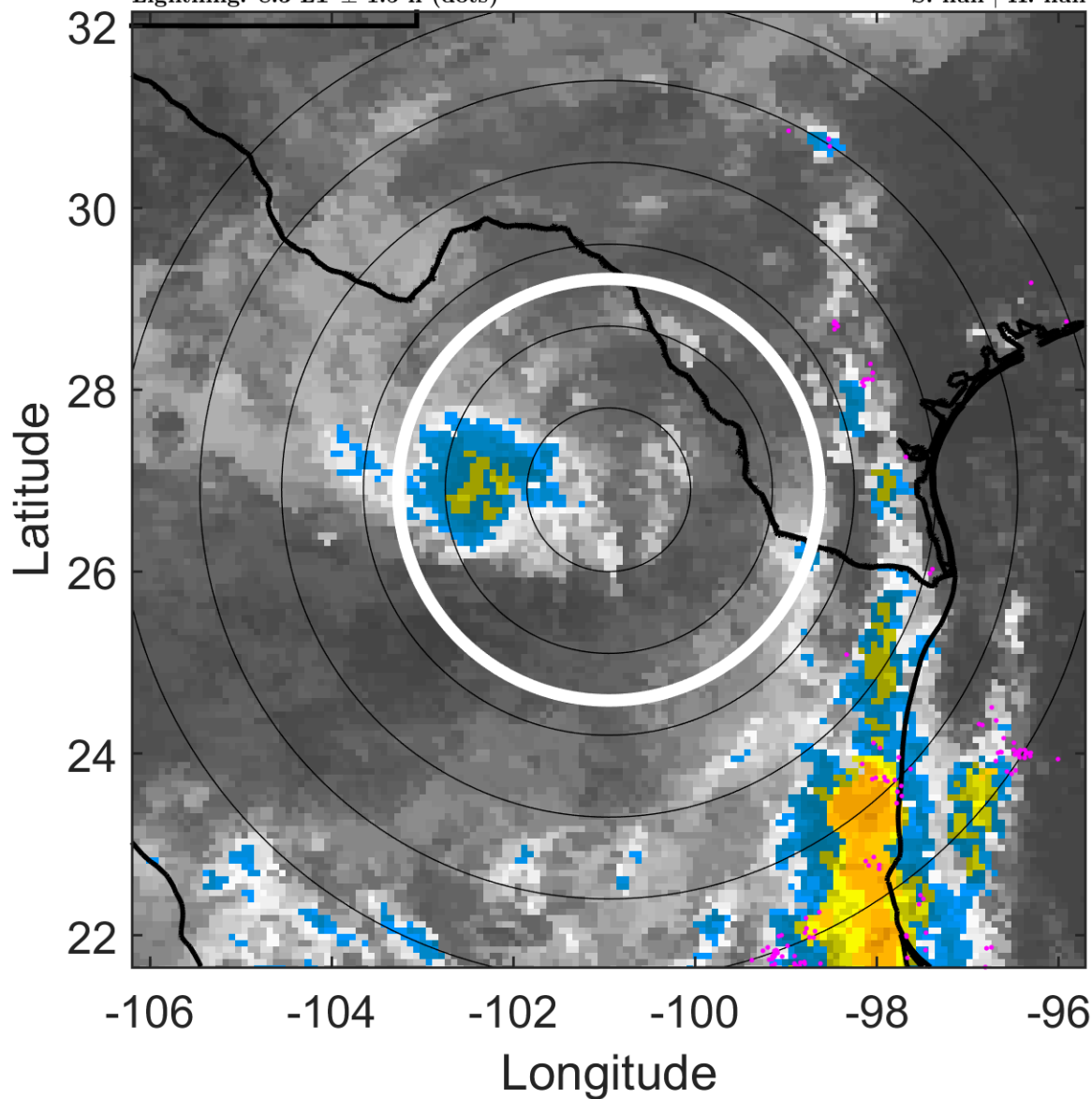
t: 2010070915 (8.3 LT)

Lightning: 8.3 LT  $\pm$  1.5 h (dots)

LAND EFFECTS

02L (TWO) | 20 kt LO

S: null | H: null



### 6-h IR BT Differences & Lightning

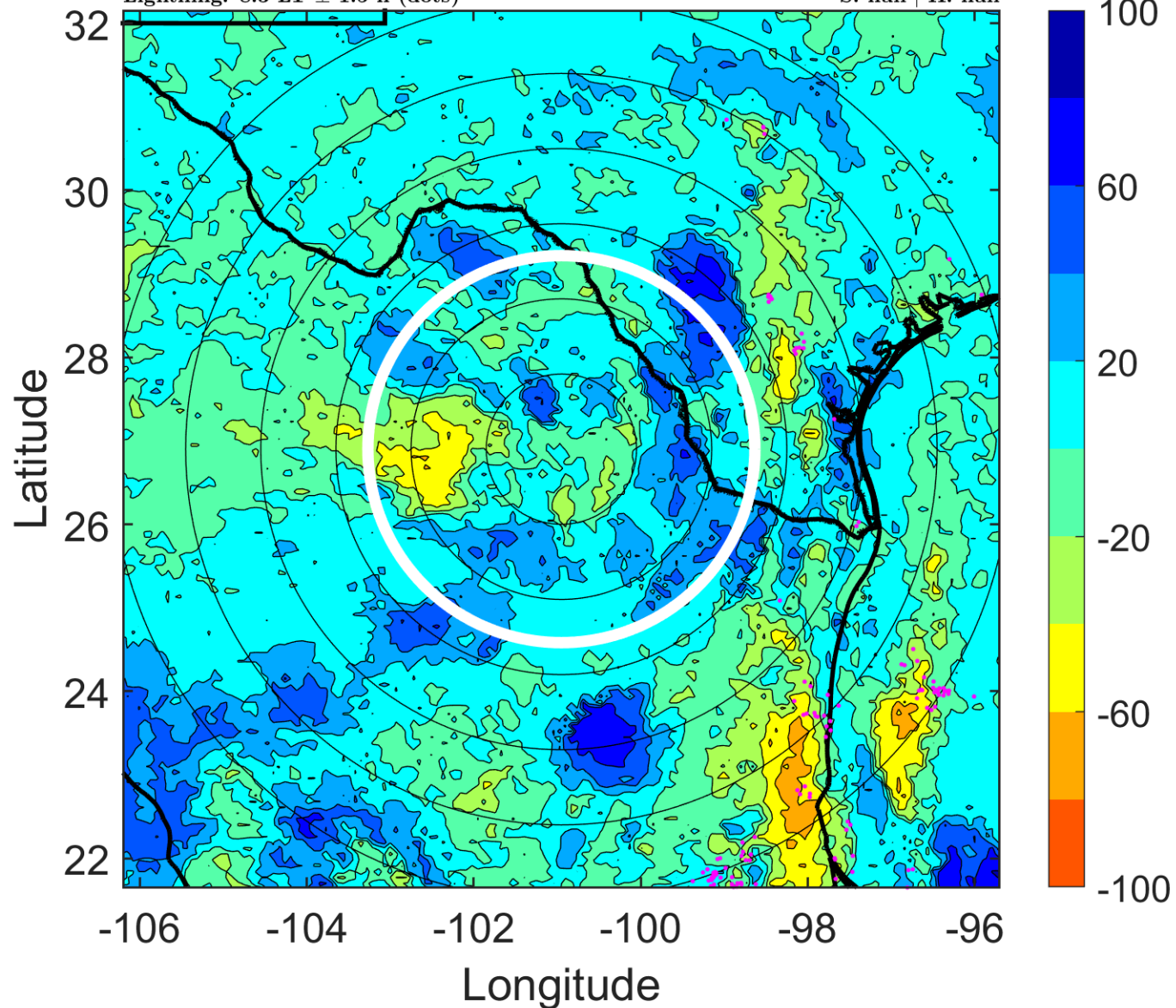
$\Delta$ t: 2010070915 (8.3 LT) - 2010070909 (2.3 LT)

Lightning: 8.3 LT  $\pm$  1.5 h (dots)

LAND EFFECTS

02L (TWO) | 20 kt LO

S: null | H: null





### IR BT & Lightning

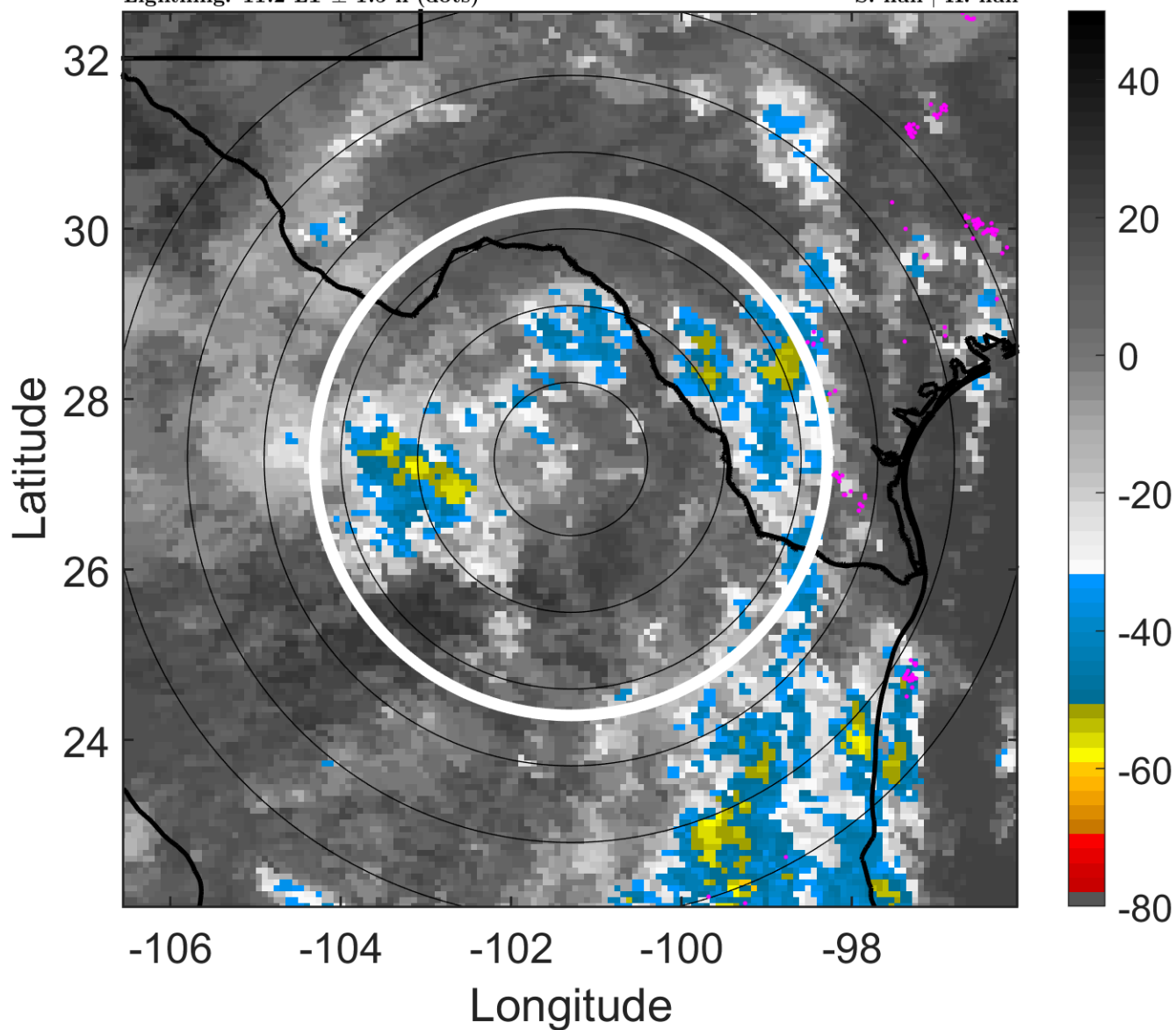
t: 2010070918 (11.2 LT)

Lightning: 11.2 LT  $\pm$  1.5 h (dots)

LAND EFFECTS

02L (TWO) | 20 kt LO

S: null | H: null



### 6-h IR BT Differences & Lightning

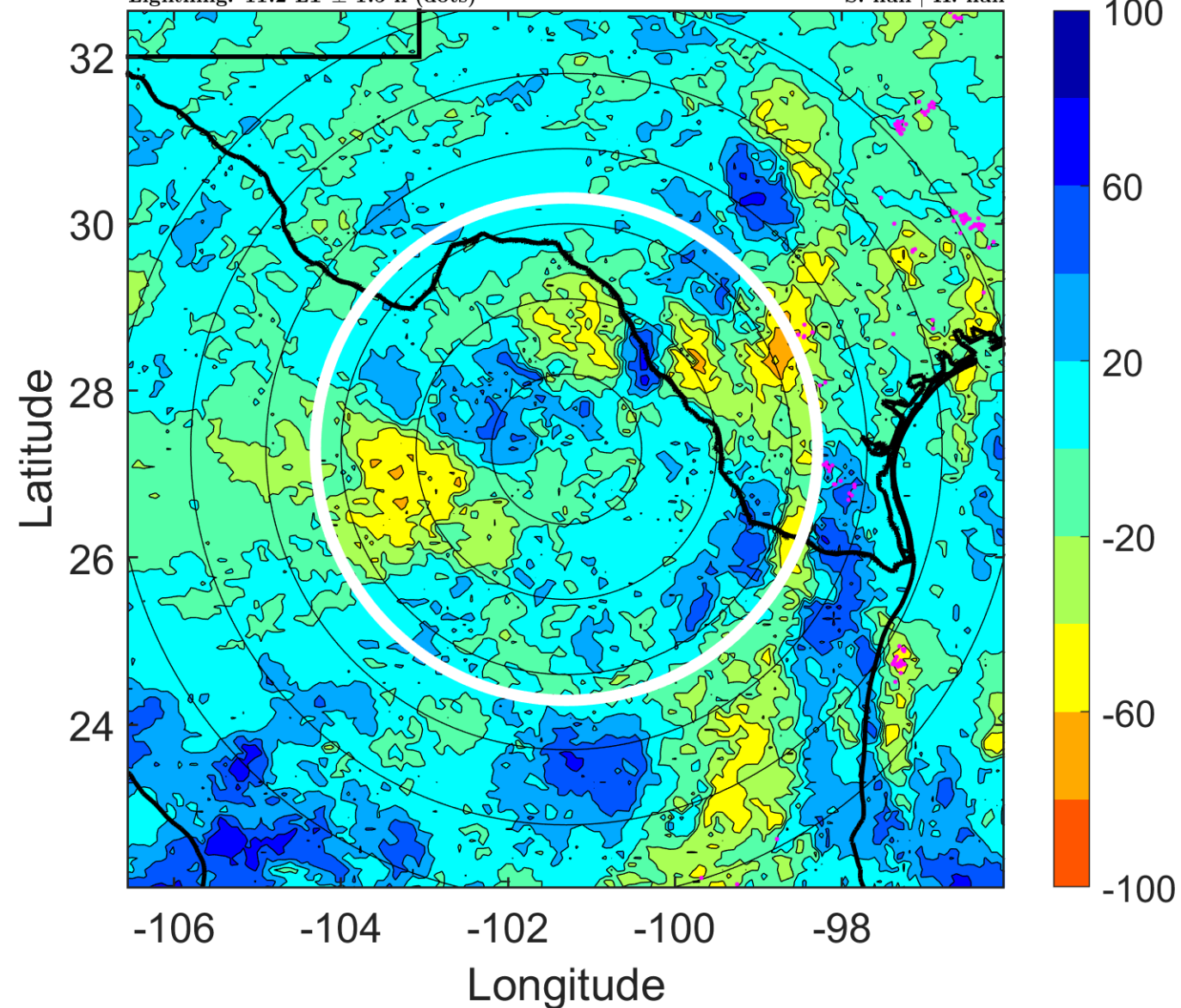
$\Delta$ t: 2010070918 (11.2 LT) - 2010070912 (5.3 LT)

Lightning: 11.2 LT  $\pm$  1.5 h (dots)

LAND EFFECTS

02L (TWO) | 20 kt LO

S: null | H: null



### IR BT & Lightning

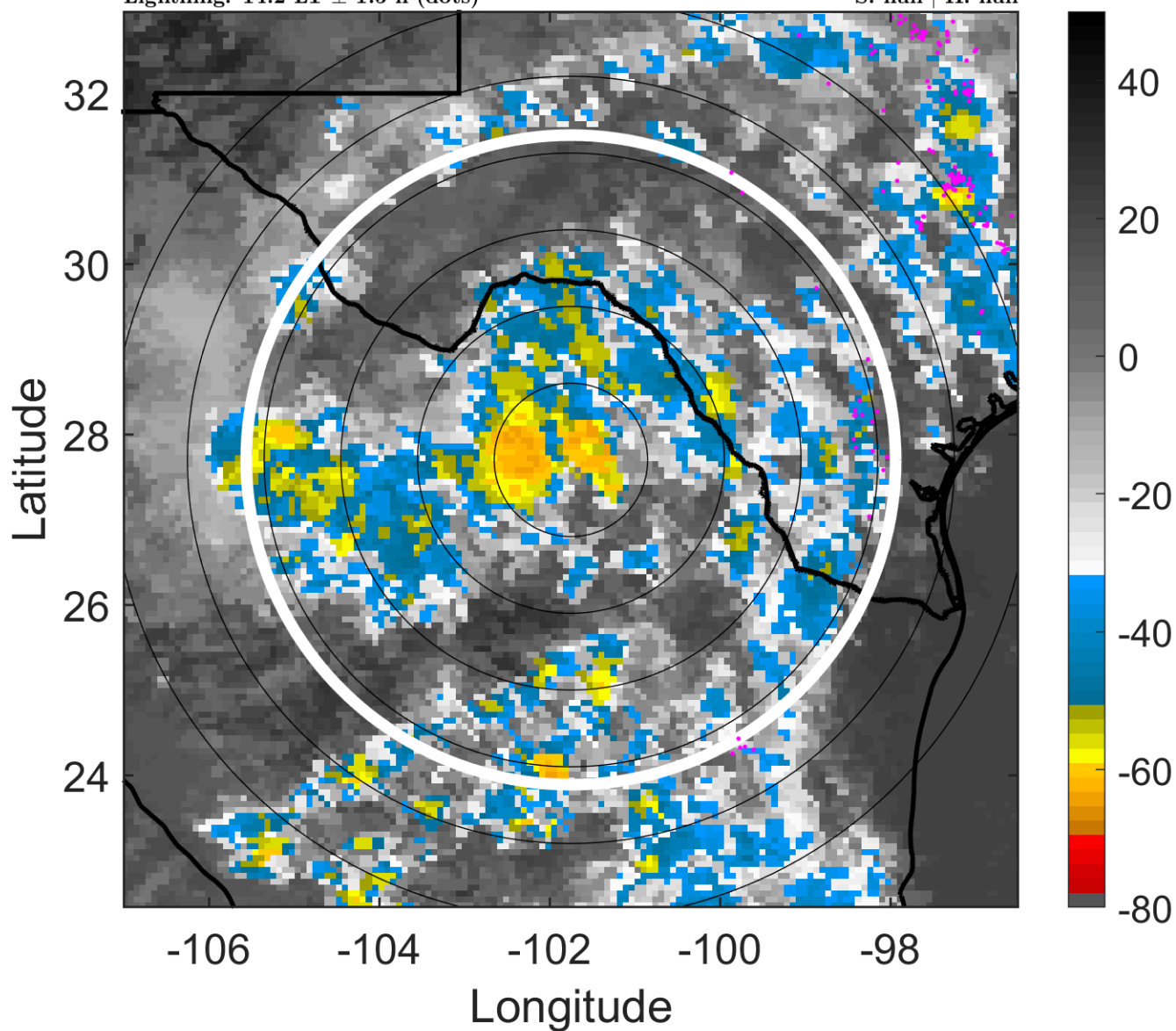
t: 2010070921 (14.2 LT)

Lightning: 14.2 LT  $\pm$  1.5 h (dots)

LAND EFFECTS

02L (TWO) | 20 kt LO

S: null | H: null



### 6-h IR BT Differences & Lightning

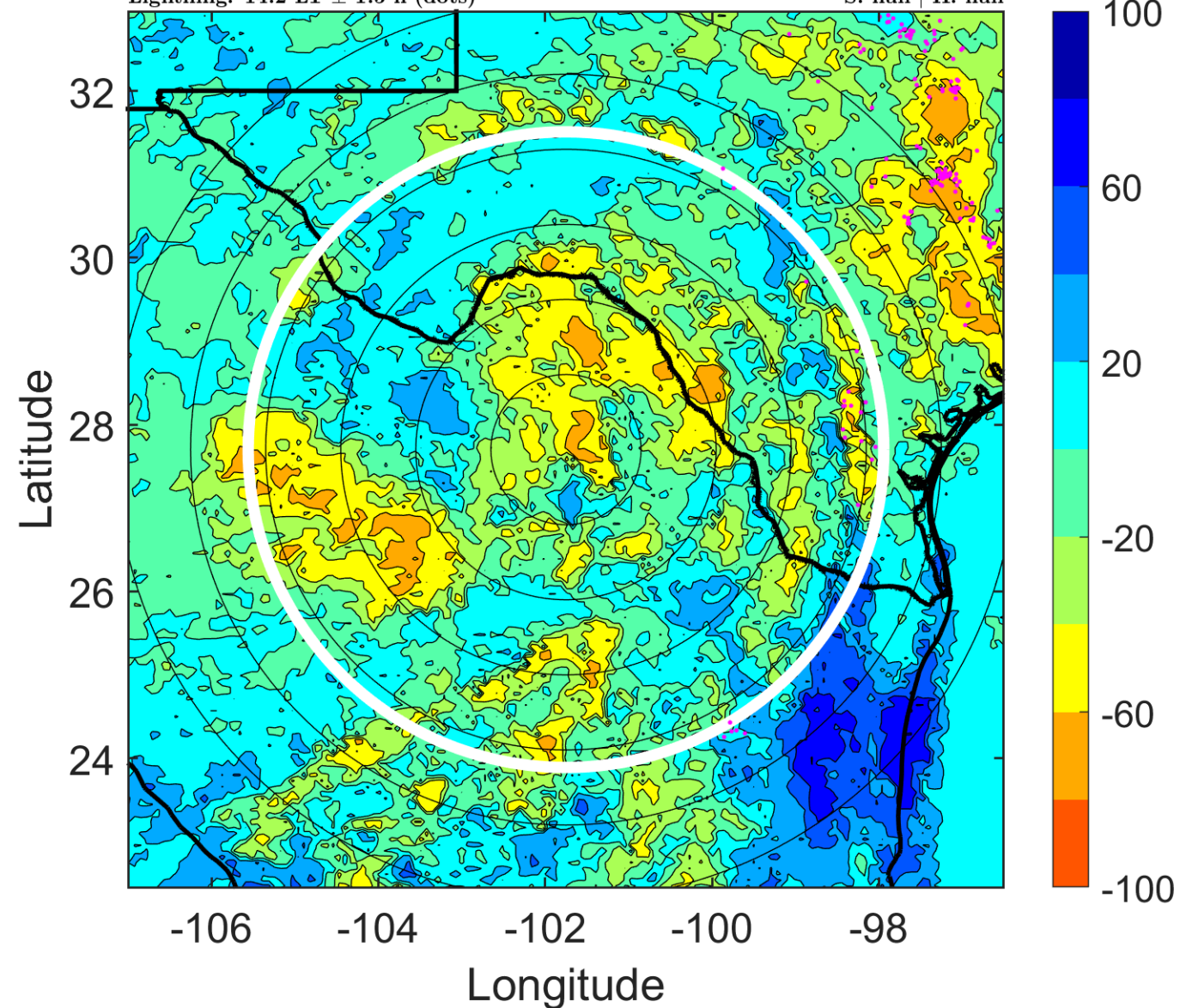
$\Delta$ t: 2010070921 (14.2 LT) - 2010070915 (8.3 LT)

Lightning: 14.2 LT  $\pm$  1.5 h (dots)

LAND EFFECTS

02L (TWO) | 20 kt LO

S: null | H: null





### IR BT & Lightning

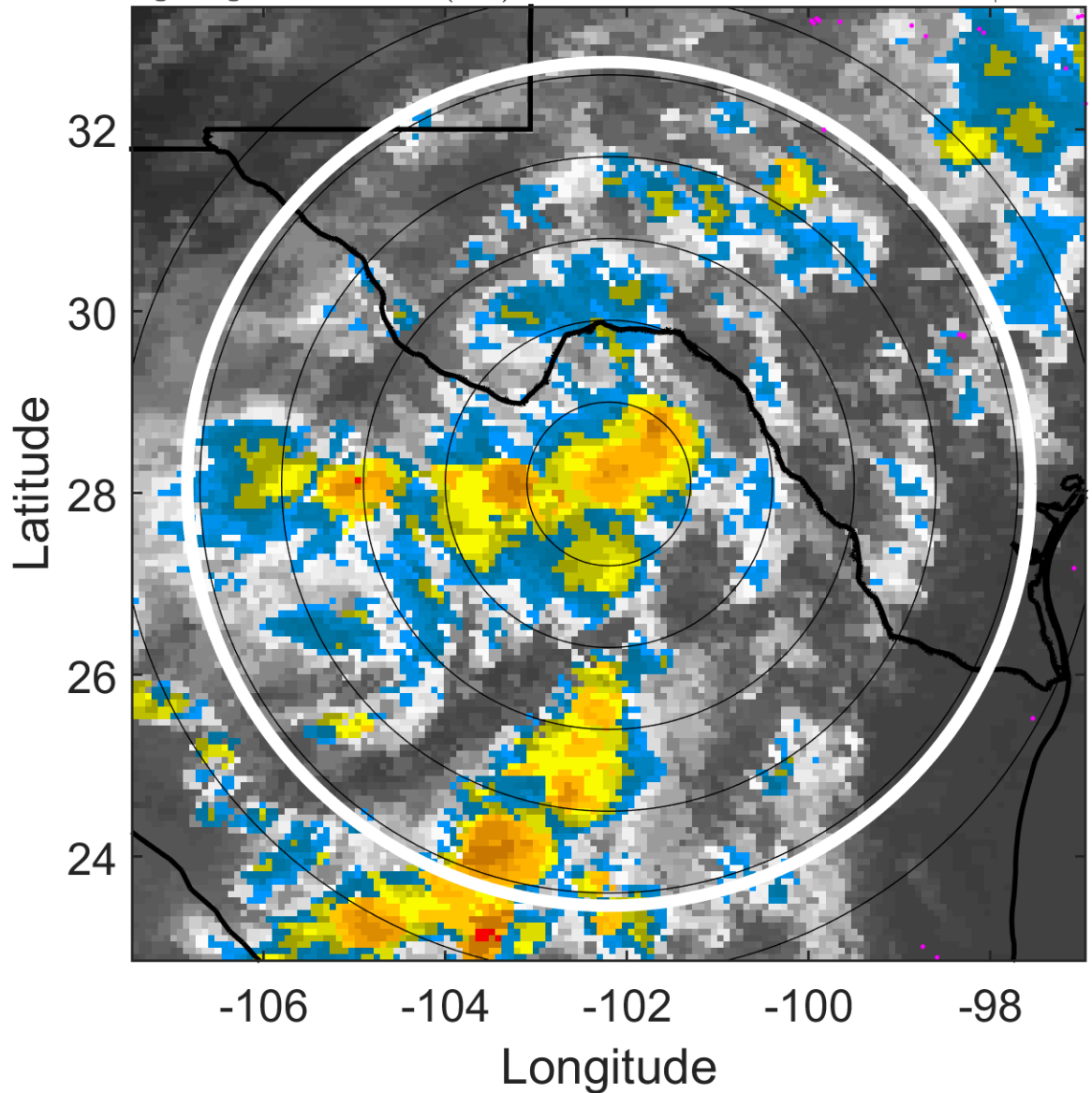
t: 2010071000 (17.2 LT)

Lightning: 17.2 LT  $\pm$  1.5 h (dots)

LAND EFFECTS

02L (TWO) | 20 kt LO

S: null | H: null



### 6-h IR BT Differences & Lightning

$\Delta$ t: 2010071000 (17.2 LT) - 2010070918 (11.2 LT)

Lightning: 17.2 LT  $\pm$  1.5 h (dots)

LAND EFFECTS

02L (TWO) | 20 kt LO

S: null | H: null

