

IR BT & Lightning

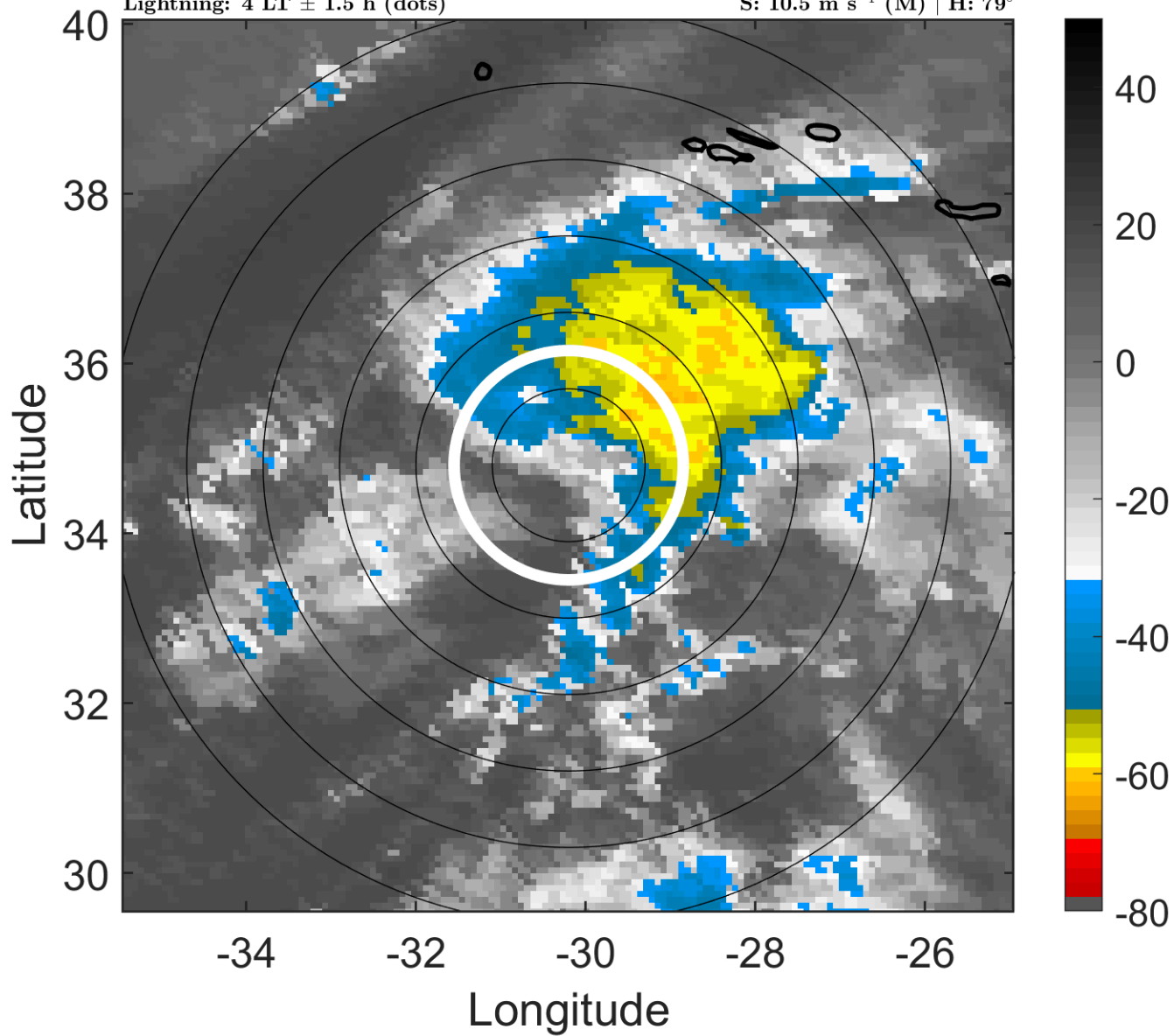
t: 2005100406 (4 LT)

Lightning: 4 LT \pm 1.5 h (dots)

PT: LLCP | EA: ACT

21L (UNNAMED) | 30 kt SD

S: 10.5 m s⁻¹ (M) | H: 79°



6-h IR BT Differences & Lightning

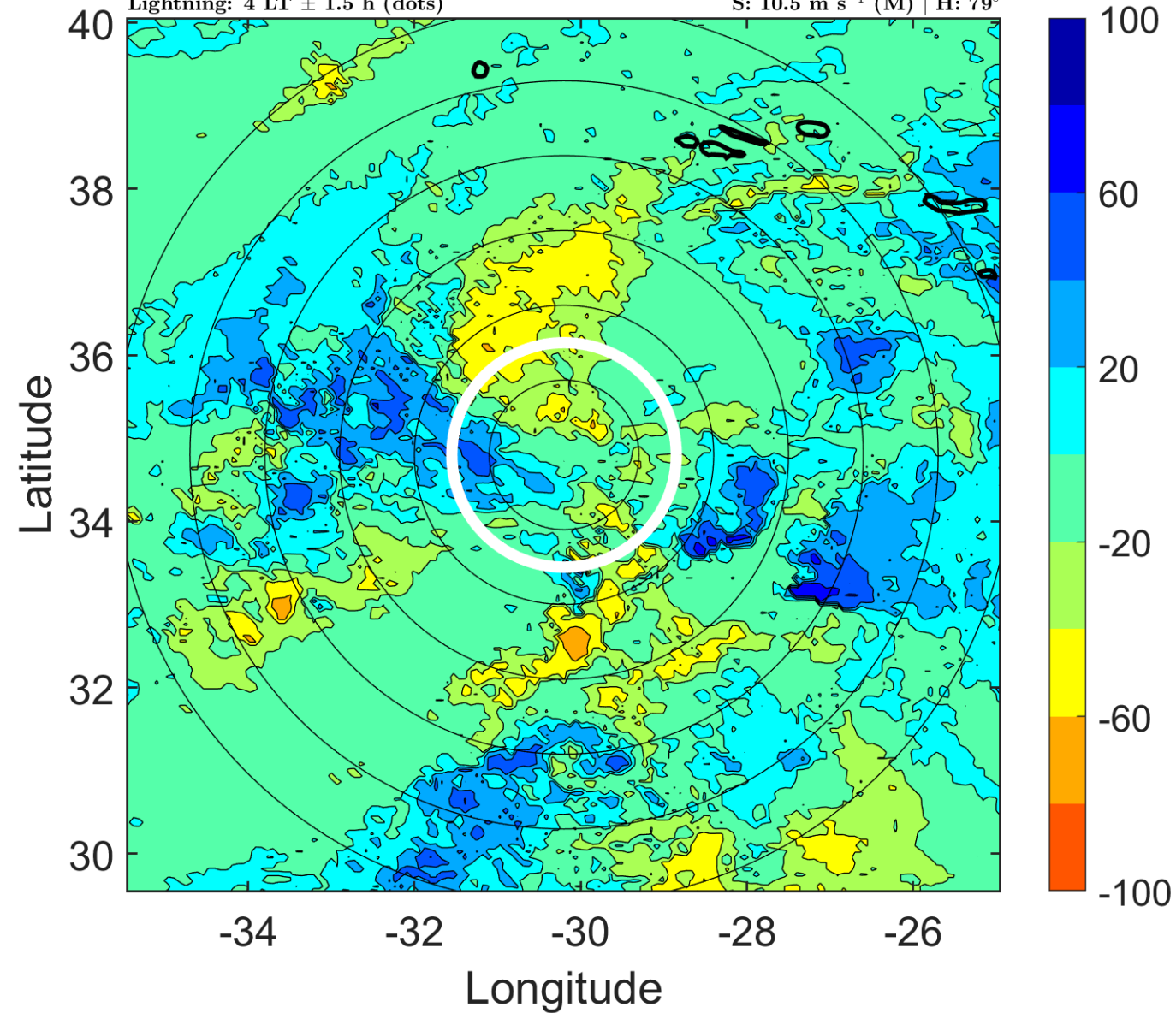
Δ t: 2005100406 (4 LT) - 2005100400 (21.9 LT)

Lightning: 4 LT \pm 1.5 h (dots)

PT: LLCP | EA: ACT

21L (UNNAMED) | 30 kt SD

S: 10.5 m s⁻¹ (M) | H: 79°



IR BT & Lightning

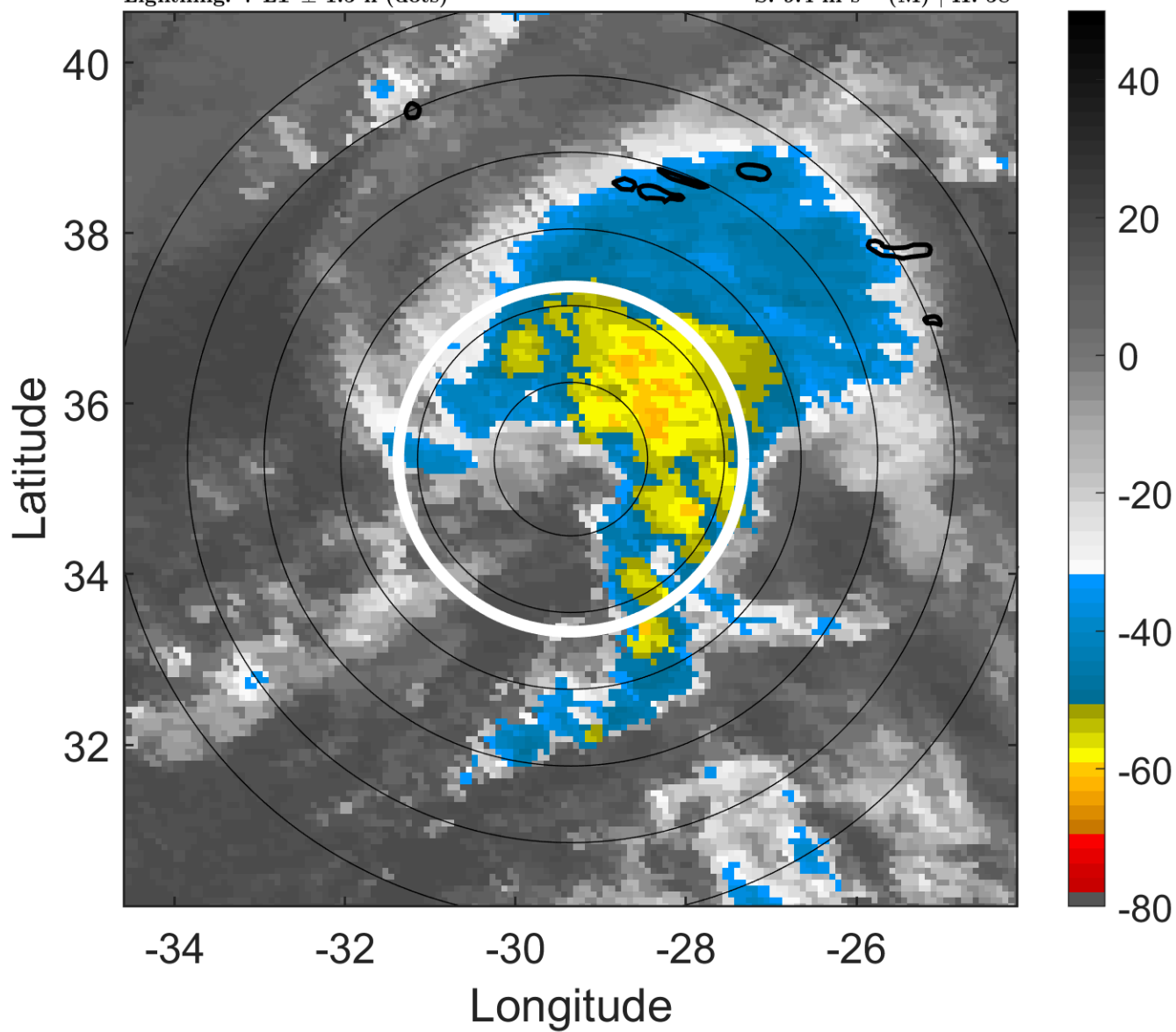
t: 2005100409 (7 LT)

Lightning: 7 LT \pm 1.5 h (dots)

PT: LLCP | EA: ACT

21L (UNNAMED) | 32.5 kt SD

S: 9.4 m s⁻¹ (M) | H: 58°



6-h IR BT Differences & Lightning

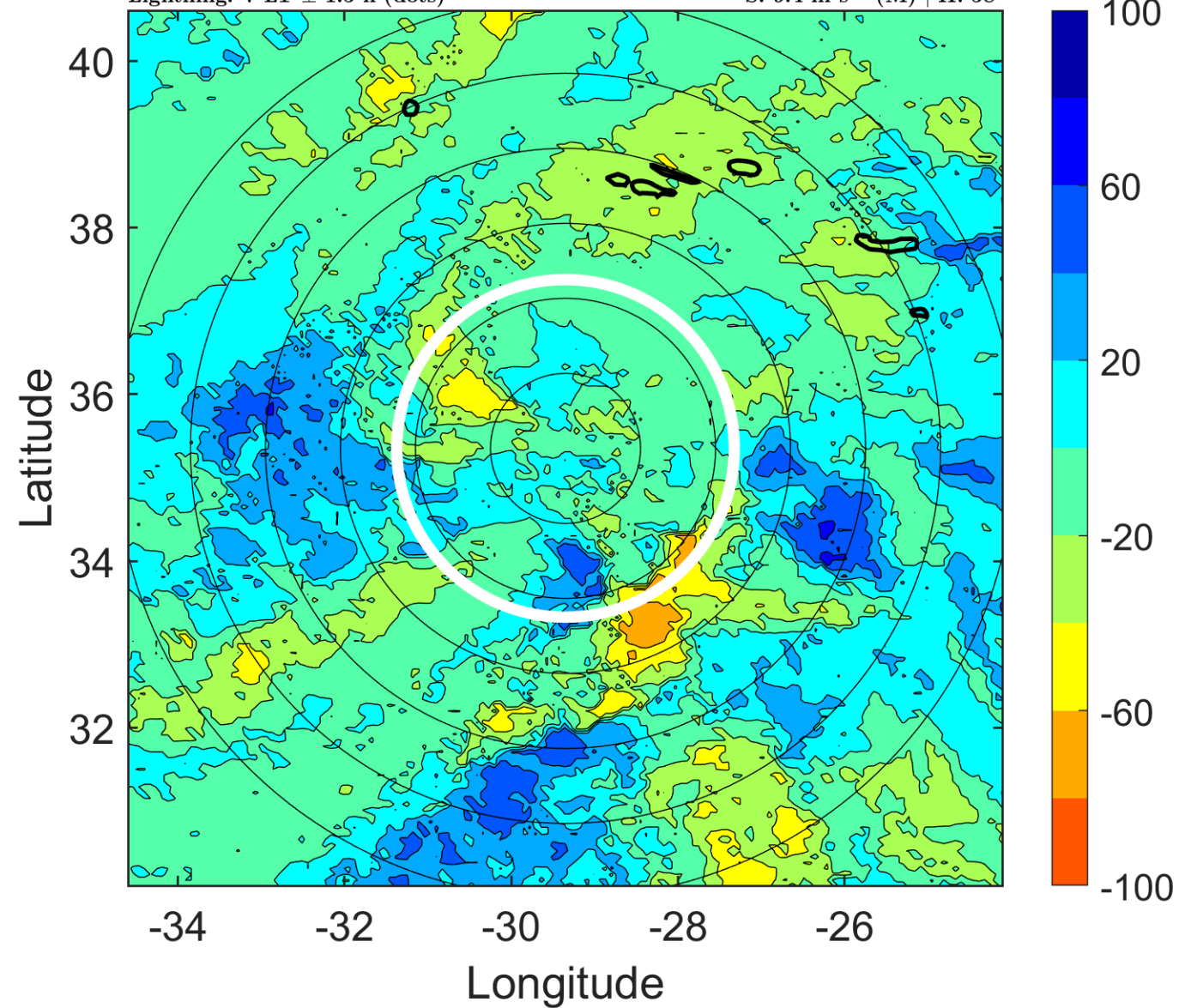
Δ t: 2005100409 (7 LT) - 2005100403 (0.9 LT)

Lightning: 7 LT \pm 1.5 h (dots)

PT: LLCP | EA: ACT

21L (UNNAMED) | 32.5 kt SD

S: 9.4 m s⁻¹ (M) | H: 58°



IR BT & Lightning

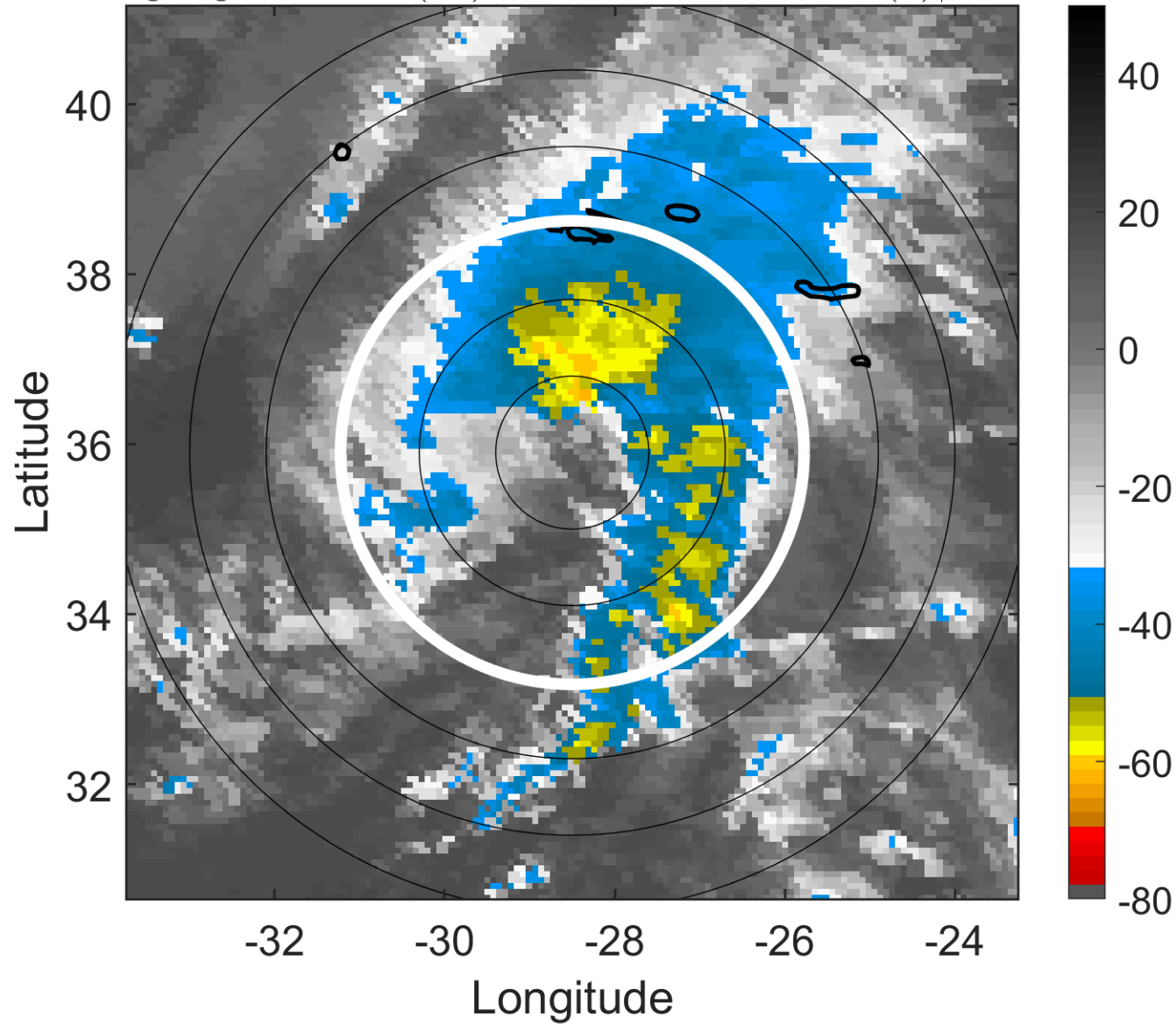
t: 2005100412 (10.1 LT)

Lightning: 10.1 LT \pm 1.5 h (dots)

PT: LLCP | EA: ACT

21L (UNNAMED) | 35 kt SS

S: 8.3 m s⁻¹ (M) | H: 37°



6-h IR BT Differences & Lightning

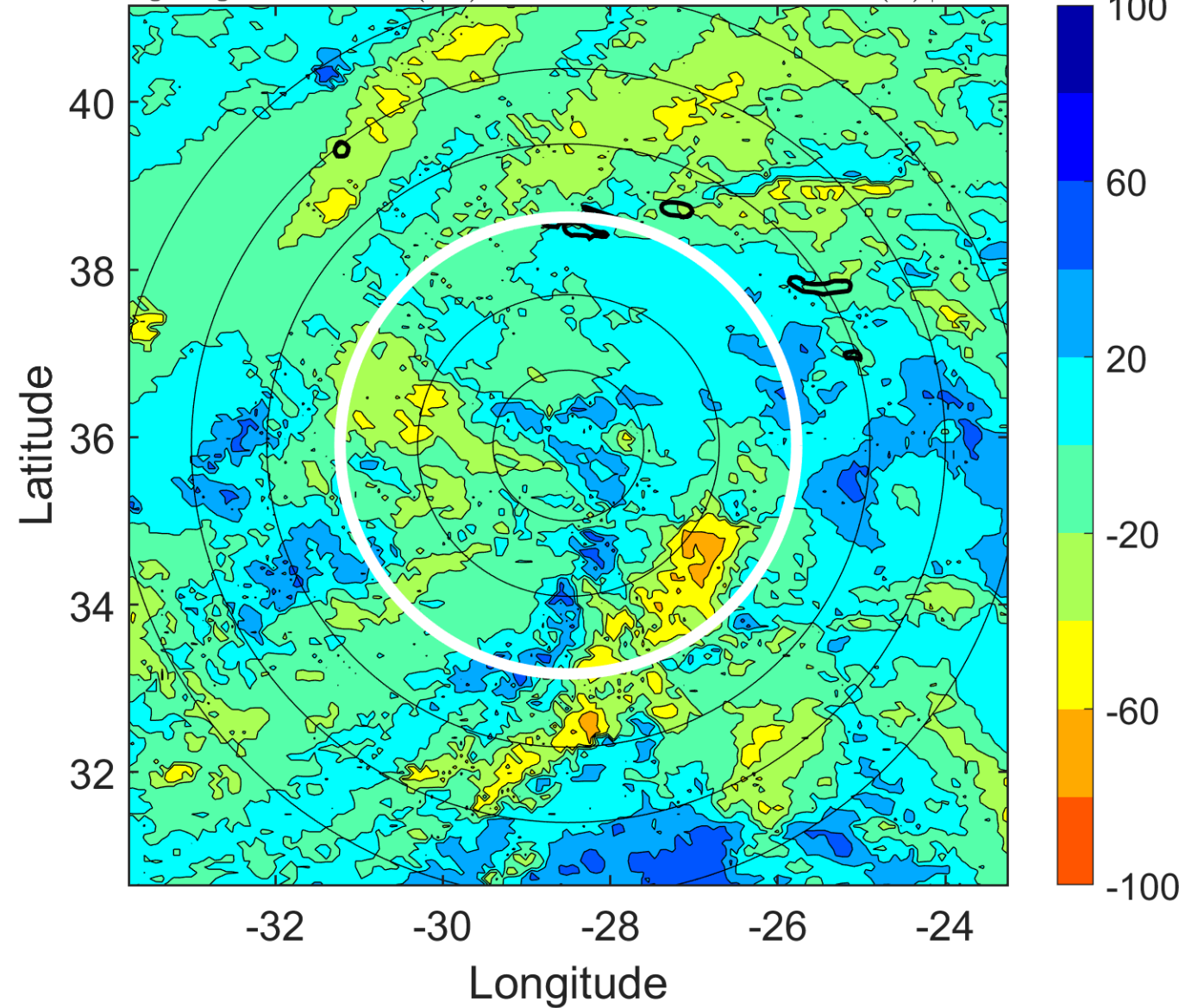
Δ t: 2005100412 (10.1 LT) - 2005100406 (4 LT)

Lightning: 10.1 LT \pm 1.5 h (dots)

PT: LLCP | EA: ACT

21L (UNNAMED) | 35 kt SS

S: 8.3 m s⁻¹ (M) | H: 37°



IR BT & Lightning

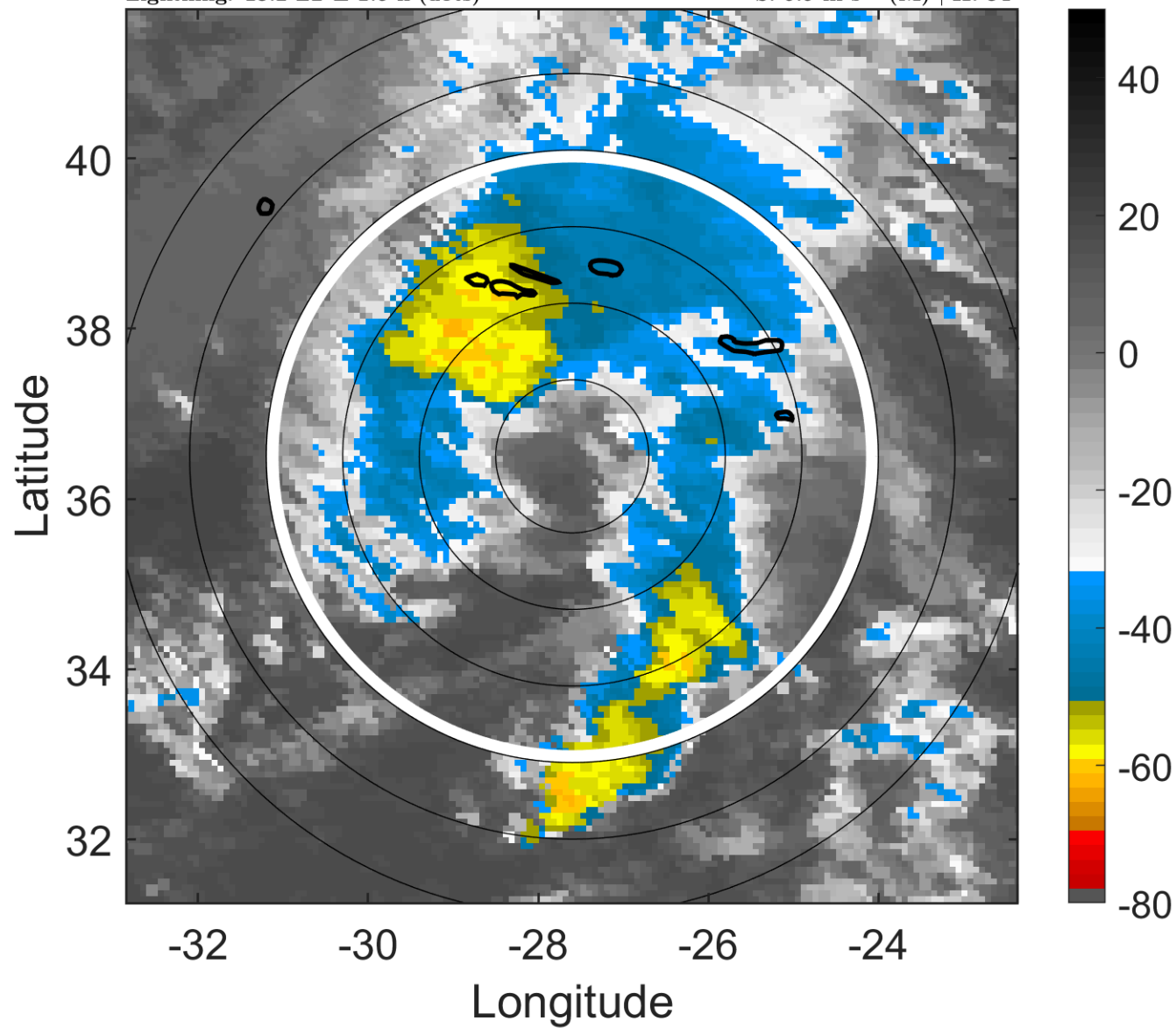
t: 2005100415 (13.2 LT)

Lightning: 13.2 LT \pm 1.5 h (dots)

PT: LLCP | EA: ACT

21L (UNNAMED) | 40 kt SS

S: 9.9 m s⁻¹ (M) | H: 34°



6-h IR BT Differences & Lightning

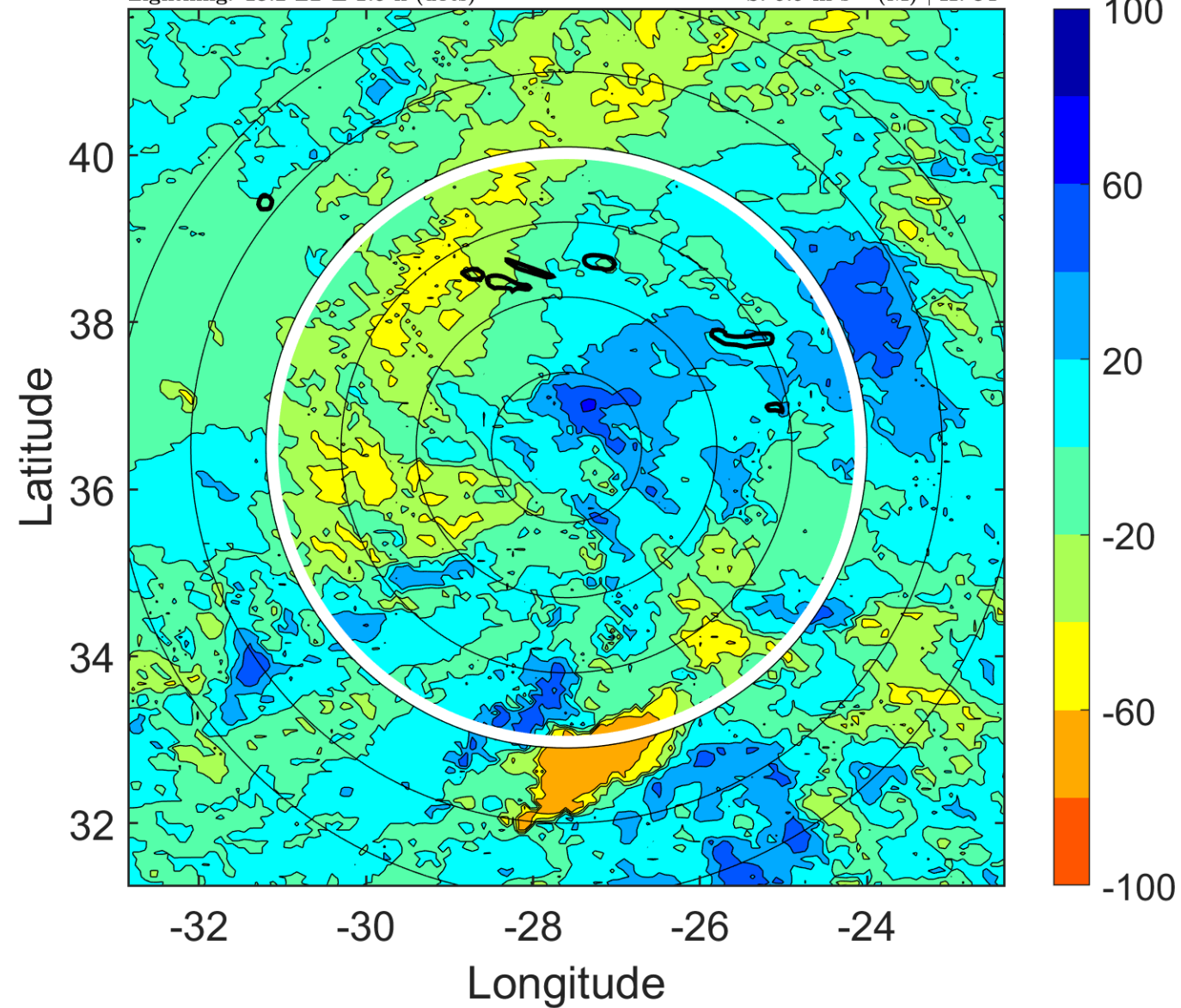
Δ t: 2005100415 (13.2 LT) - 2005100409 (7 LT)

Lightning: 13.2 LT \pm 1.5 h (dots)

PT: LLCP | EA: ACT

21L (UNNAMED) | 40 kt SS

S: 9.9 m s⁻¹ (M) | H: 34°



IR BT & Lightning

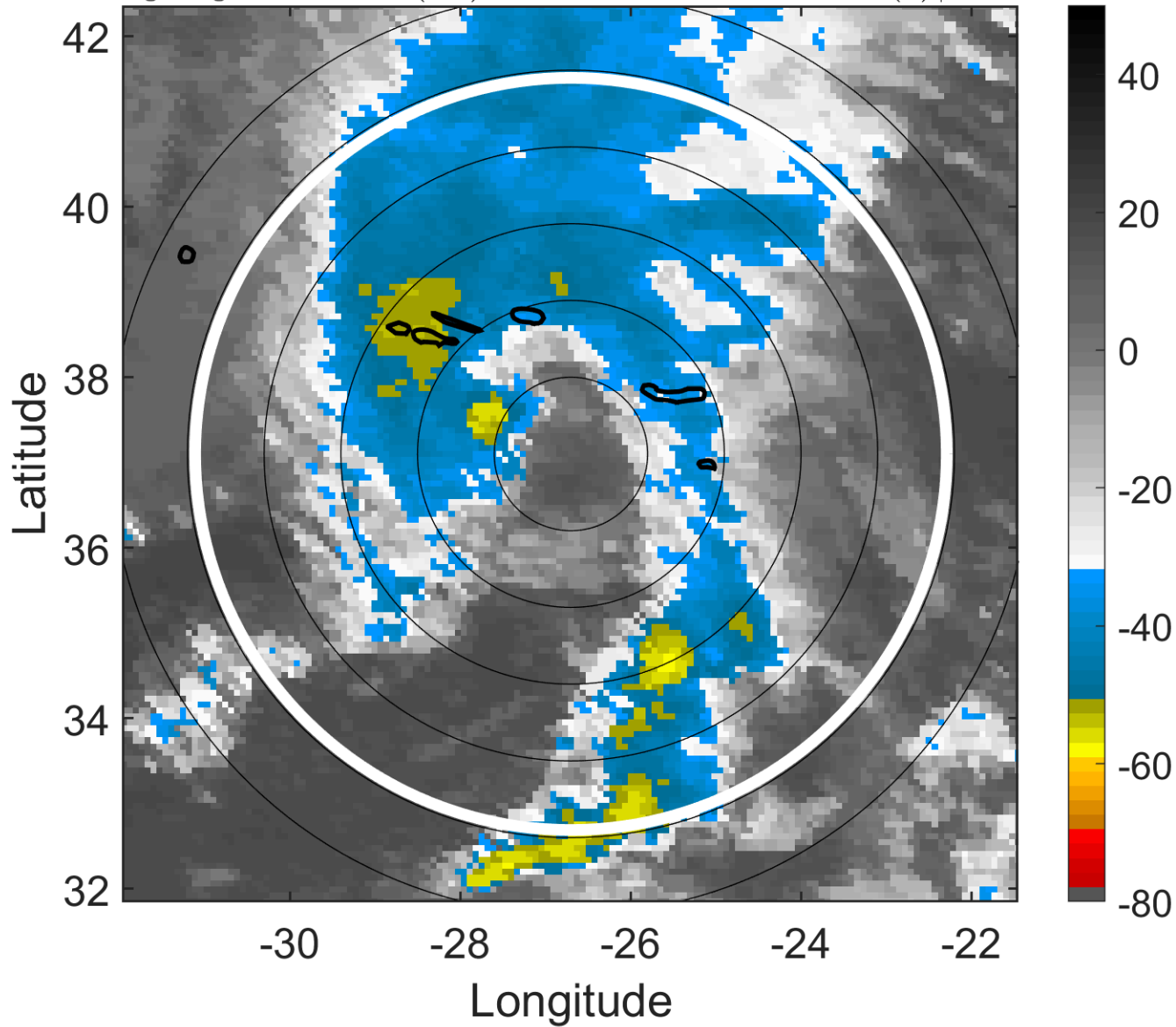
t: 2005100418 (16.2 LT)

Lightning: 16.2 LT \pm 1.5 h (dots)

PT: LLCP | EA: ACT

21L (UNNAMED) | 45 kt SS

S: 11.4 m s⁻¹ (H) | H: 31°



6-h IR BT Differences & Lightning

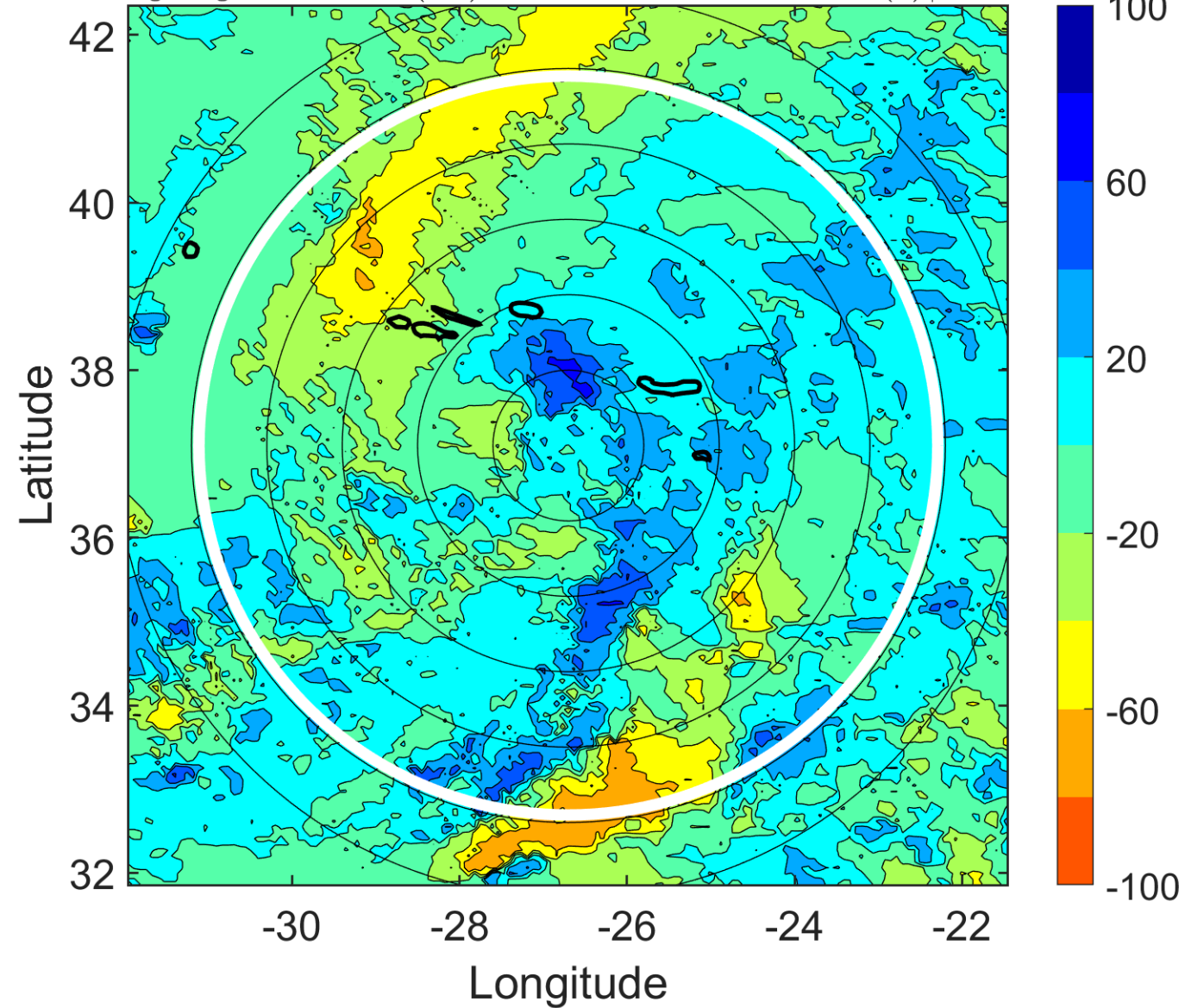
Δ t: 2005100418 (16.2 LT) - 2005100412 (10.1 LT)

Lightning: 16.2 LT \pm 1.5 h (dots)

PT: LLCP | EA: ACT

21L (UNNAMED) | 45 kt SS

S: 11.4 m s⁻¹ (H) | H: 31°



IR BT & Lightning

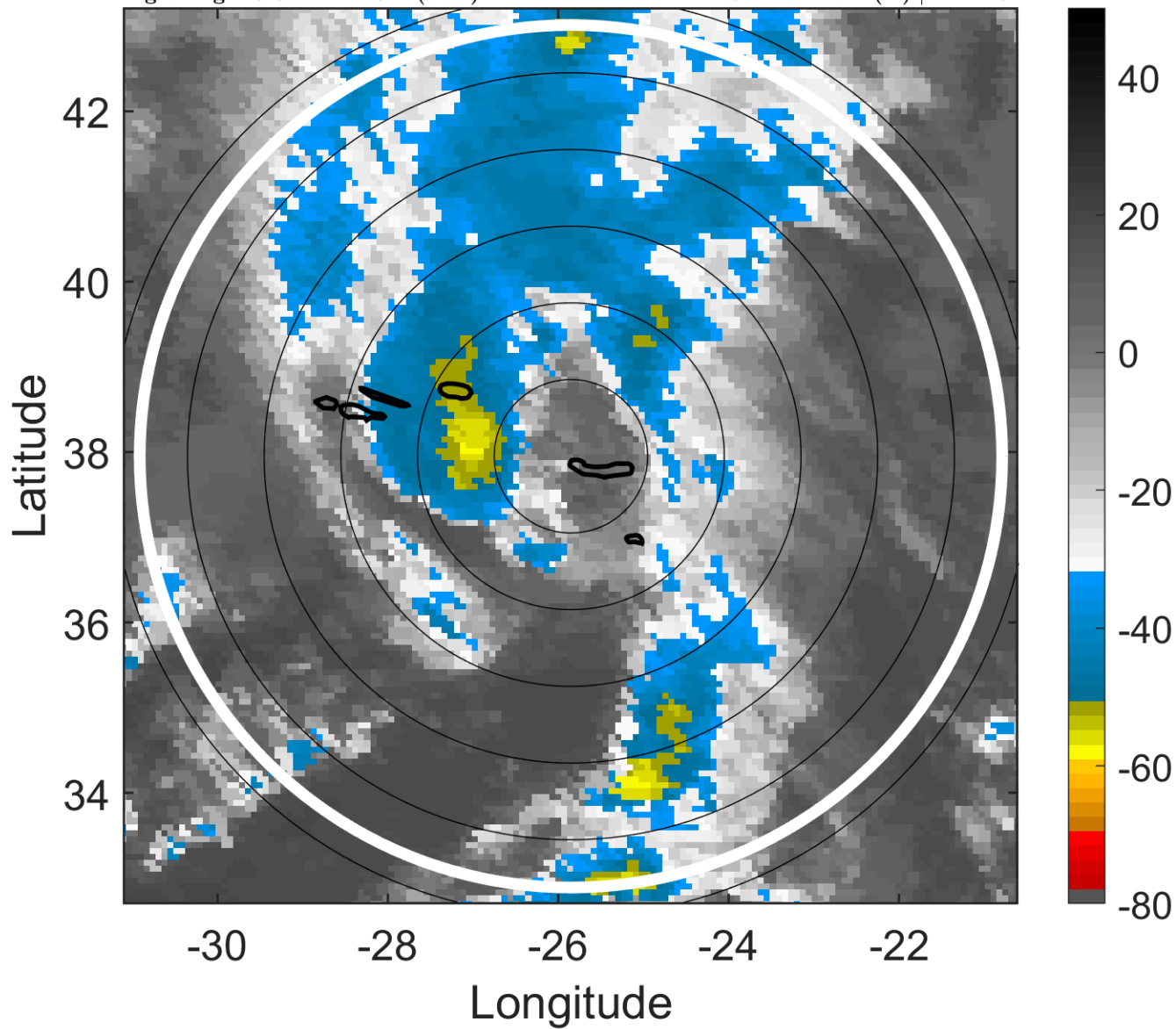
t: 2005100421 (19.3 LT)

Lightning: 19.3 LT \pm 1.5 h (dots)

PT: LLCP | EA: ACT

21L (UNNAMED) | 45 kt SS

S: 14.1 m s⁻¹ (H) | H: 24.5°



6-h IR BT Differences & Lightning

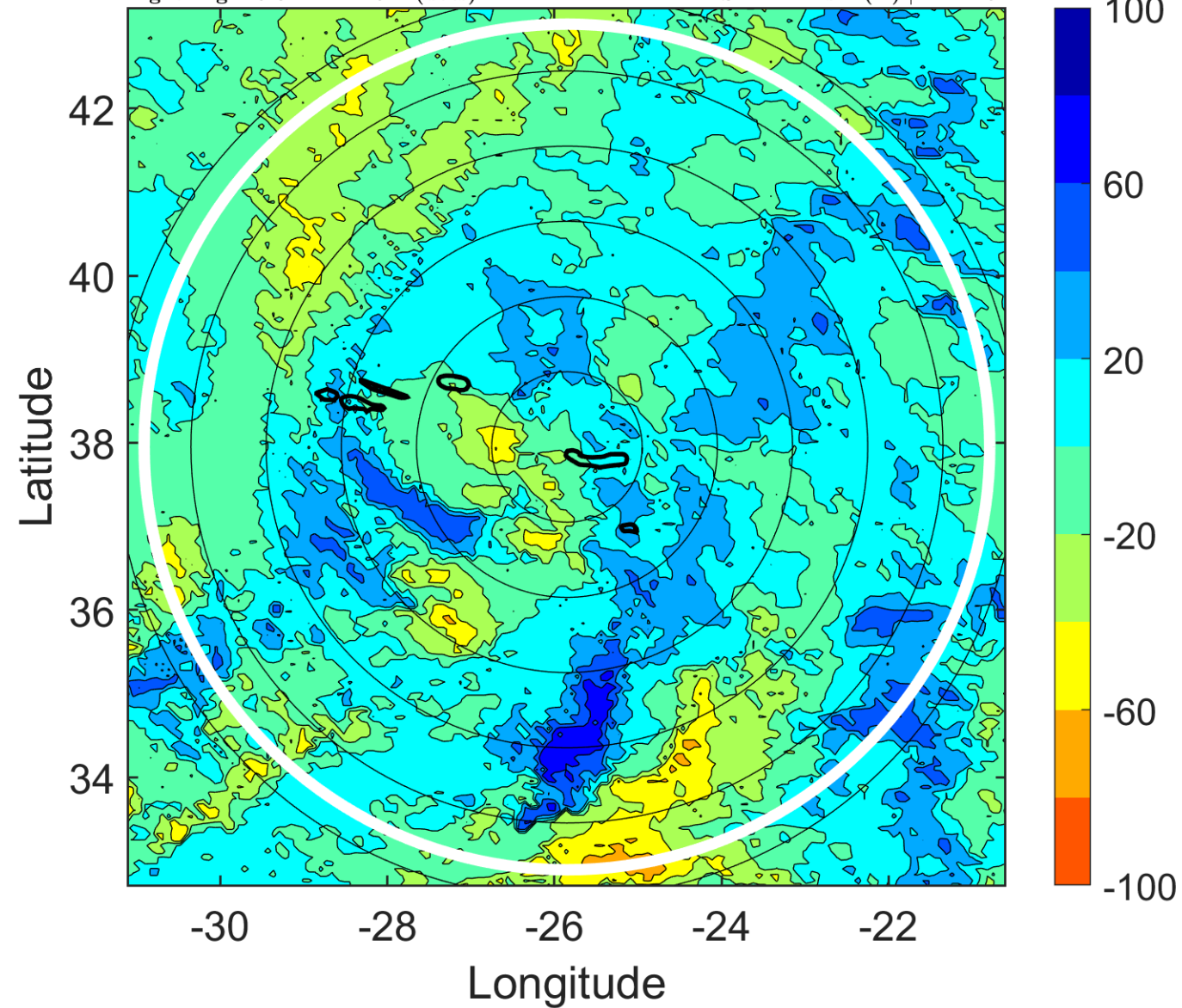
Δ t: 2005100421 (19.3 LT) - 2005100415 (13.2 LT)

Lightning: 19.3 LT \pm 1.5 h (dots)

PT: LLCP | EA: ACT

21L (UNNAMED) | 45 kt SS

S: 14.1 m s⁻¹ (H) | H: 24.5°



IR BT & Lightning

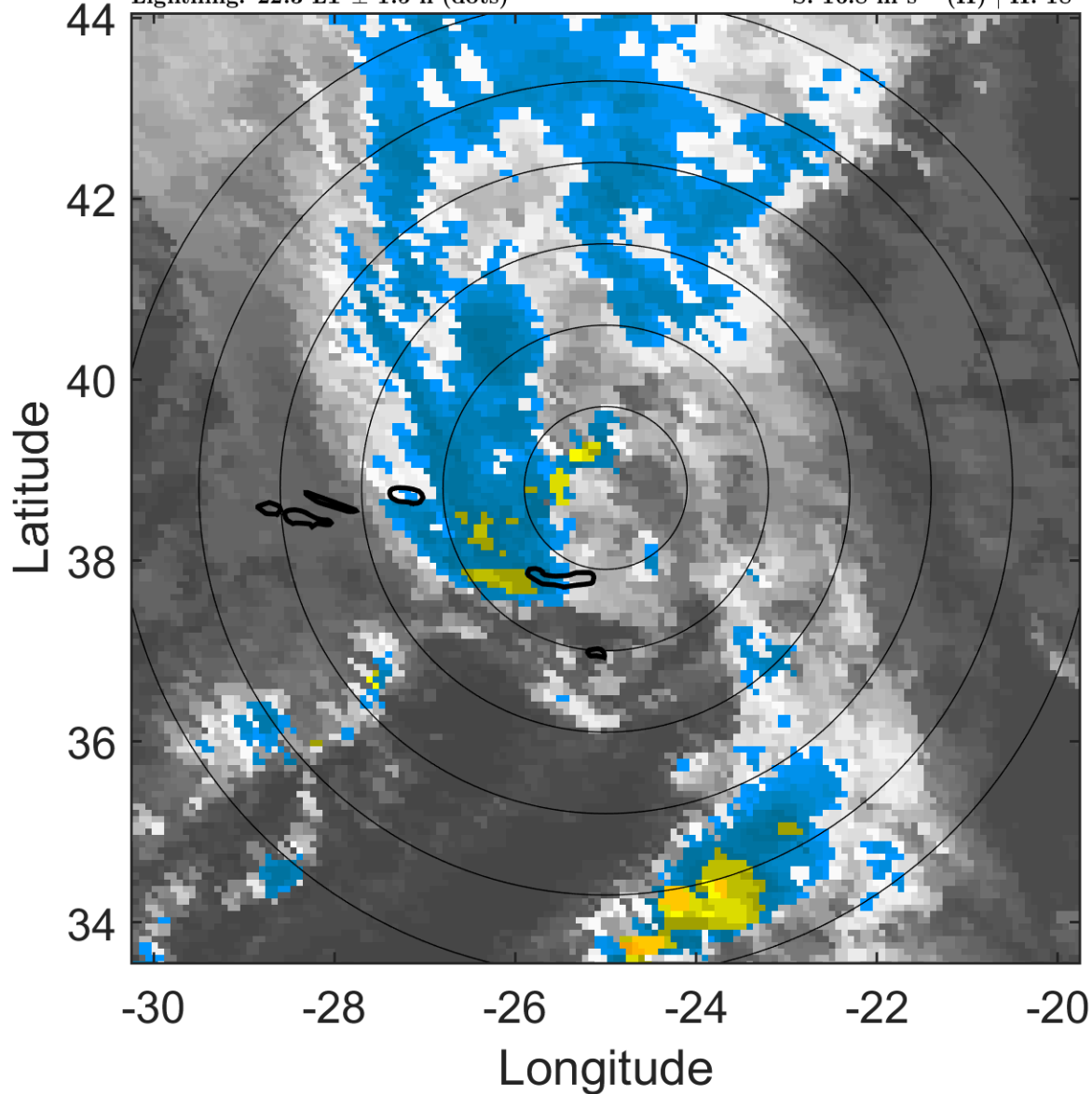
t: 2005100500 (22.3 LT)

Lightning: 22.3 LT \pm 1.5 h (dots)

PT: LLCP | EA: ACT

21L (UNNAMED) | 45 kt SS

S: 16.8 m s⁻¹ (H) | H: 18°



6-h IR BT Differences & Lightning

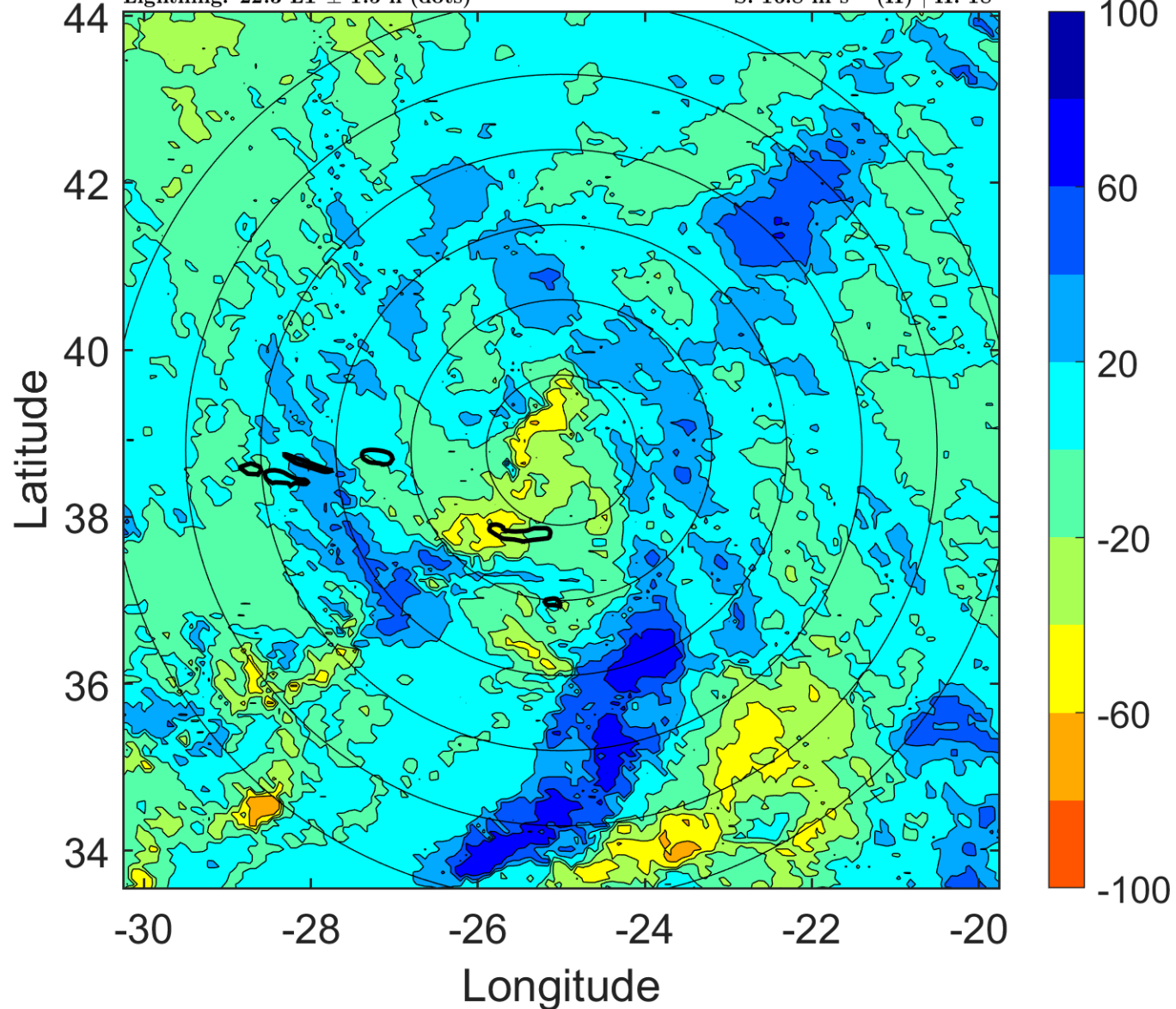
Δ t: 2005100500 (22.3 LT) - 2005100418 (16.2 LT)

Lightning: 22.3 LT \pm 1.5 h (dots)

PT: LLCP | EA: ACT

21L (UNNAMED) | 45 kt SS

S: 16.8 m s⁻¹ (H) | H: 18°



IR BT & Lightning

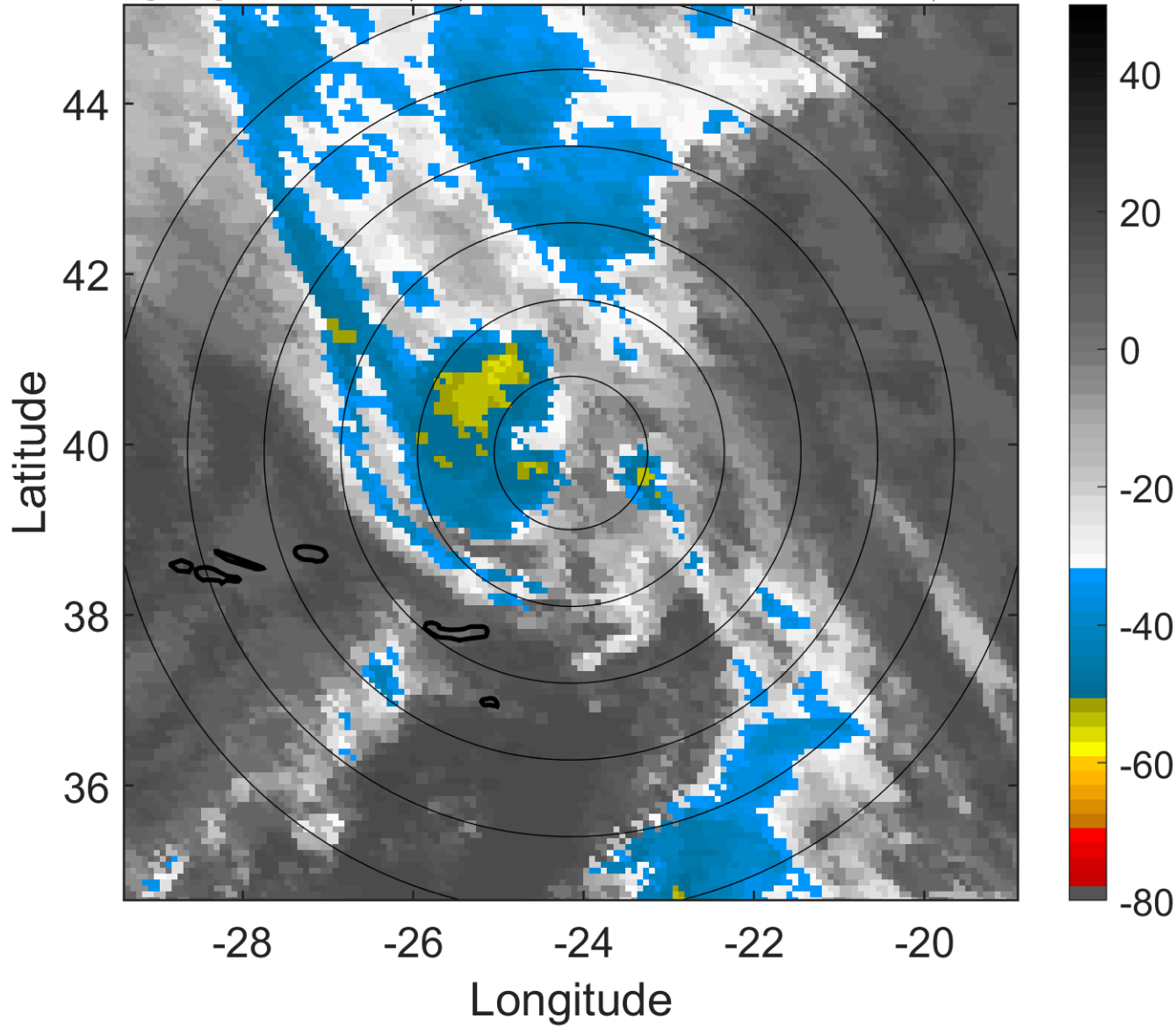
t: 2005100503 (1.4 LT)

Lightning: 1.4 LT \pm 1.5 h (dots)

PT: LLWP | EA: INACT

21L (UNNAMED) | 42.5 kt SS

S: null | H: null



6-h IR BT Differences & Lightning

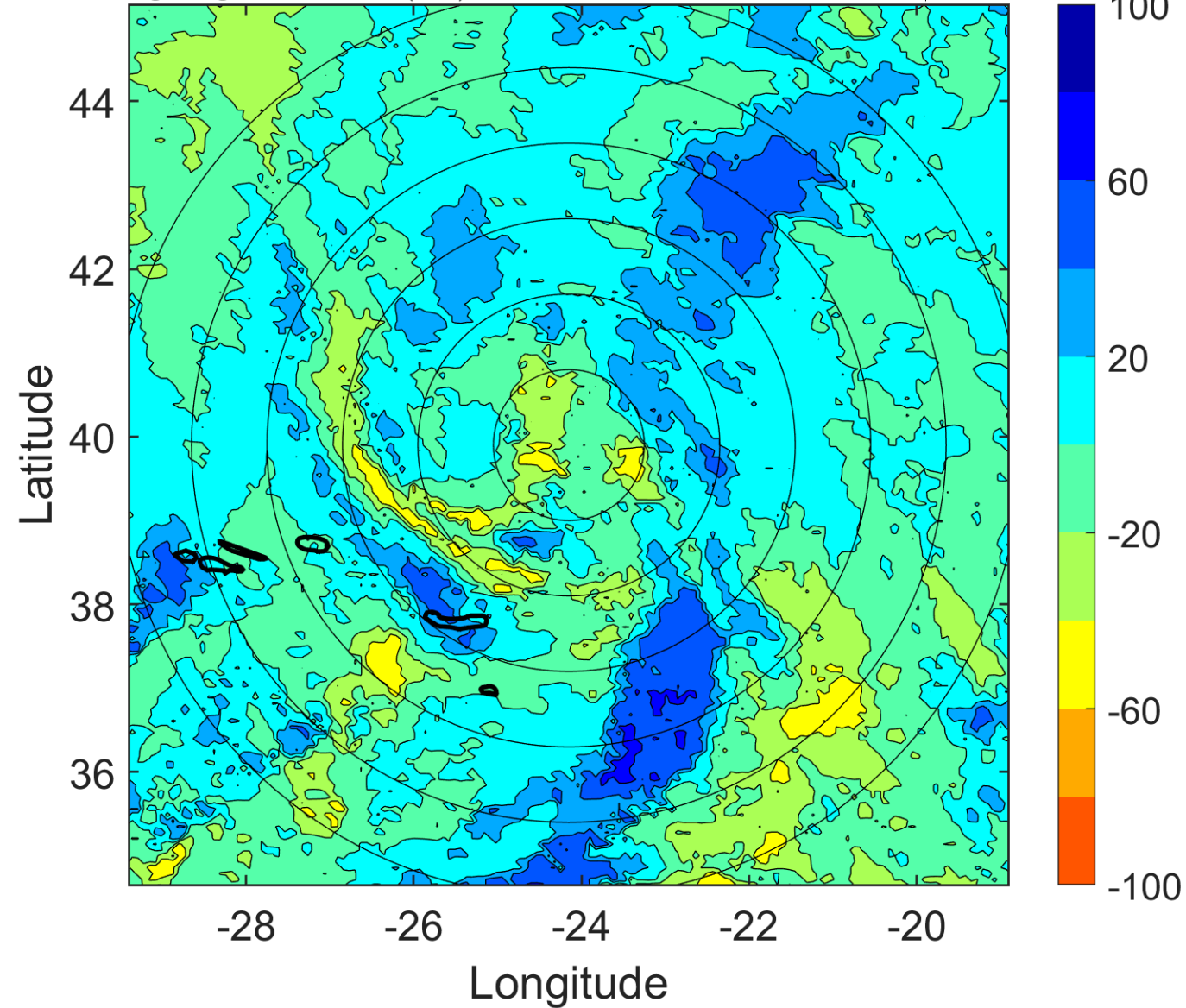
Δ t: 2005100503 (1.4 LT) - 2005100421 (19.3 LT)

Lightning: 1.4 LT \pm 1.5 h (dots)

PT: LLWP | EA: INACT

21L (UNNAMED) | 42.5 kt SS

S: null | H: null



IR BT & Lightning

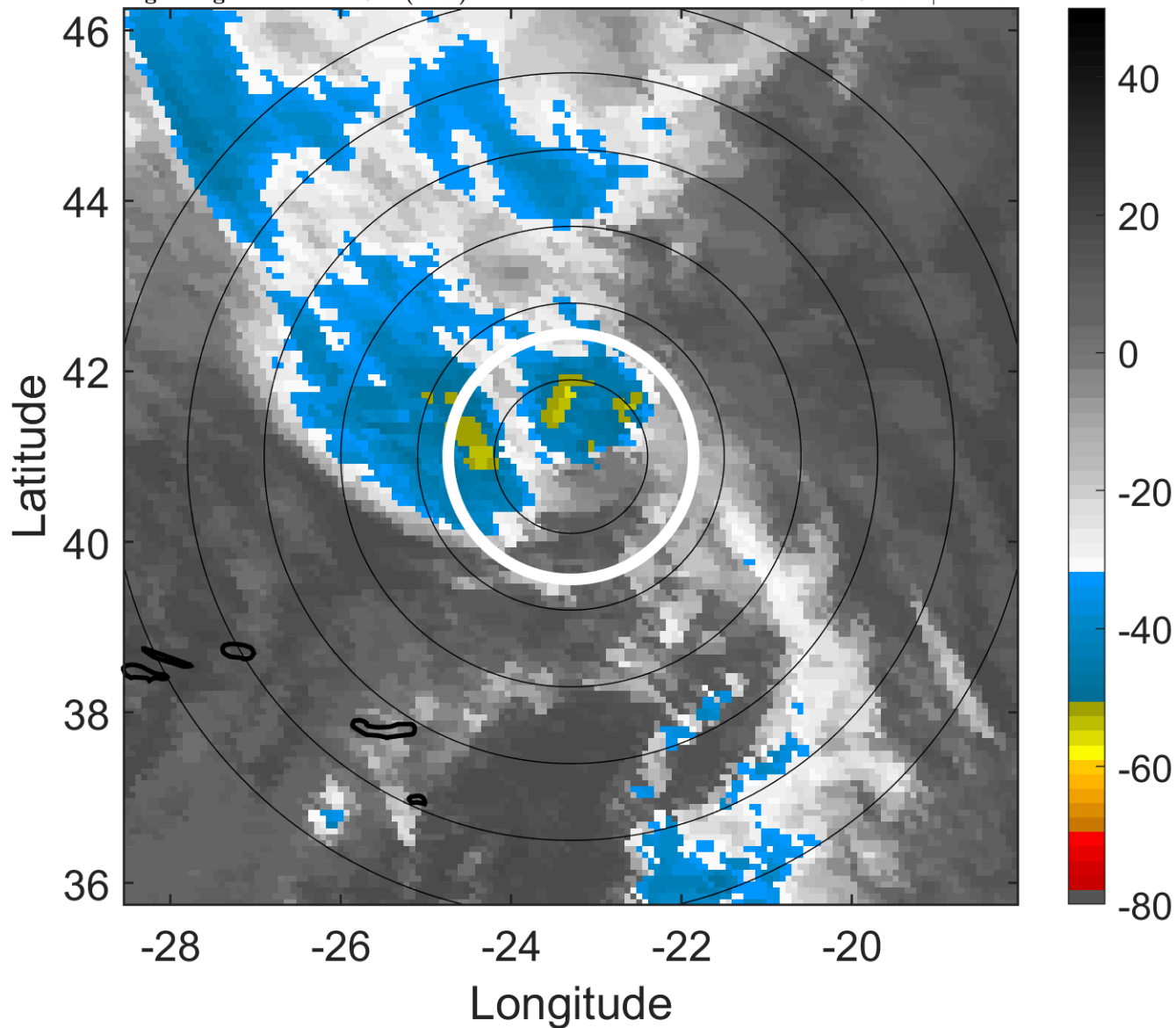
t: 2005100506 (4.4 LT)

Lightning: 4.4 LT \pm 1.5 h (dots)

PT: LLWP | EA: INACT

21L (UNNAMED) | 40 kt EX

S: null | H: null



6-h IR BT Differences & Lightning

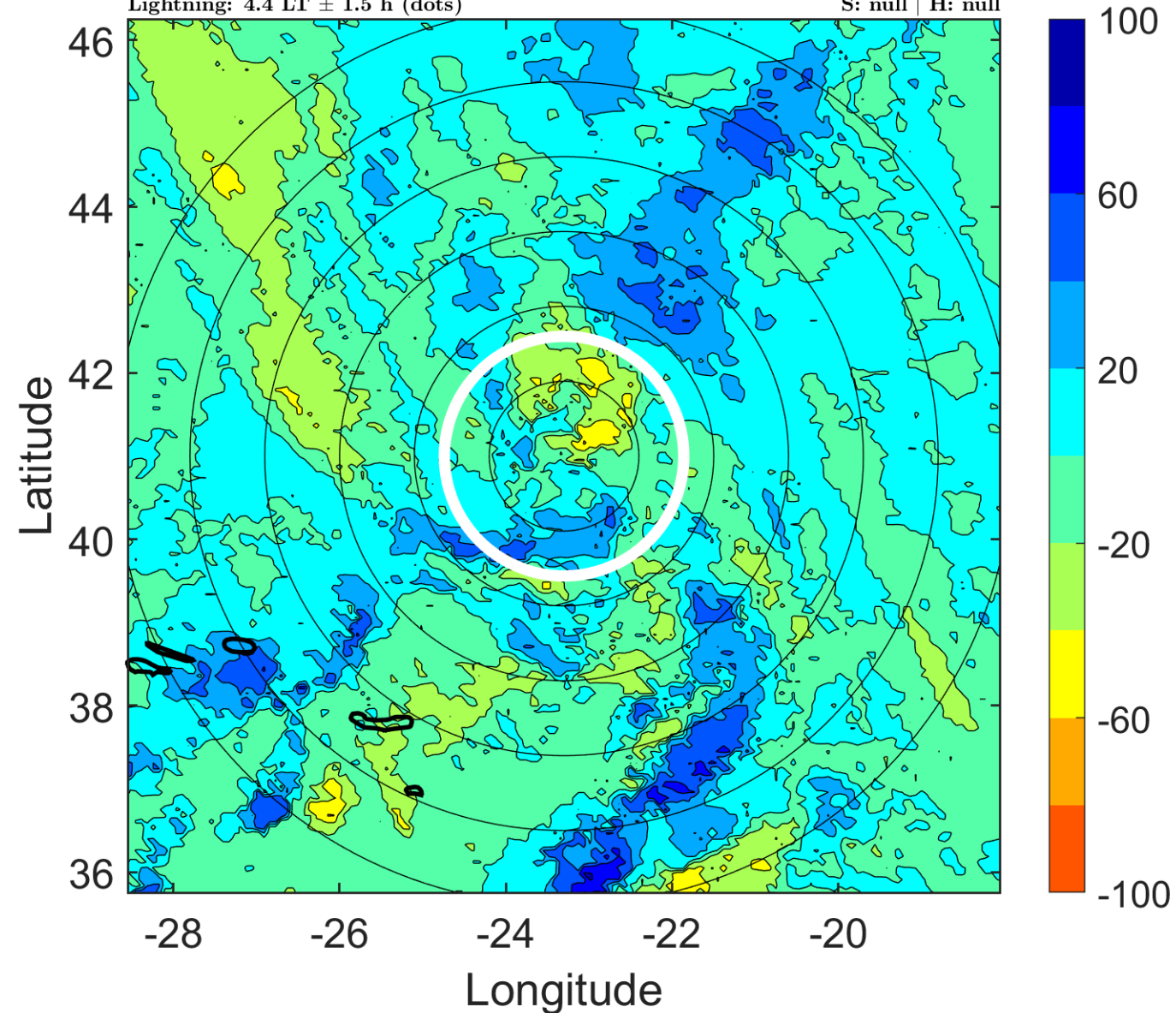
Δ t: 2005100506 (4.4 LT) - 2005100500 (22.3 LT)

Lightning: 4.4 LT \pm 1.5 h (dots)

PT: LLWP | EA: INACT

21L (UNNAMED) | 40 kt EX

S: null | H: null



IR BT & Lightning

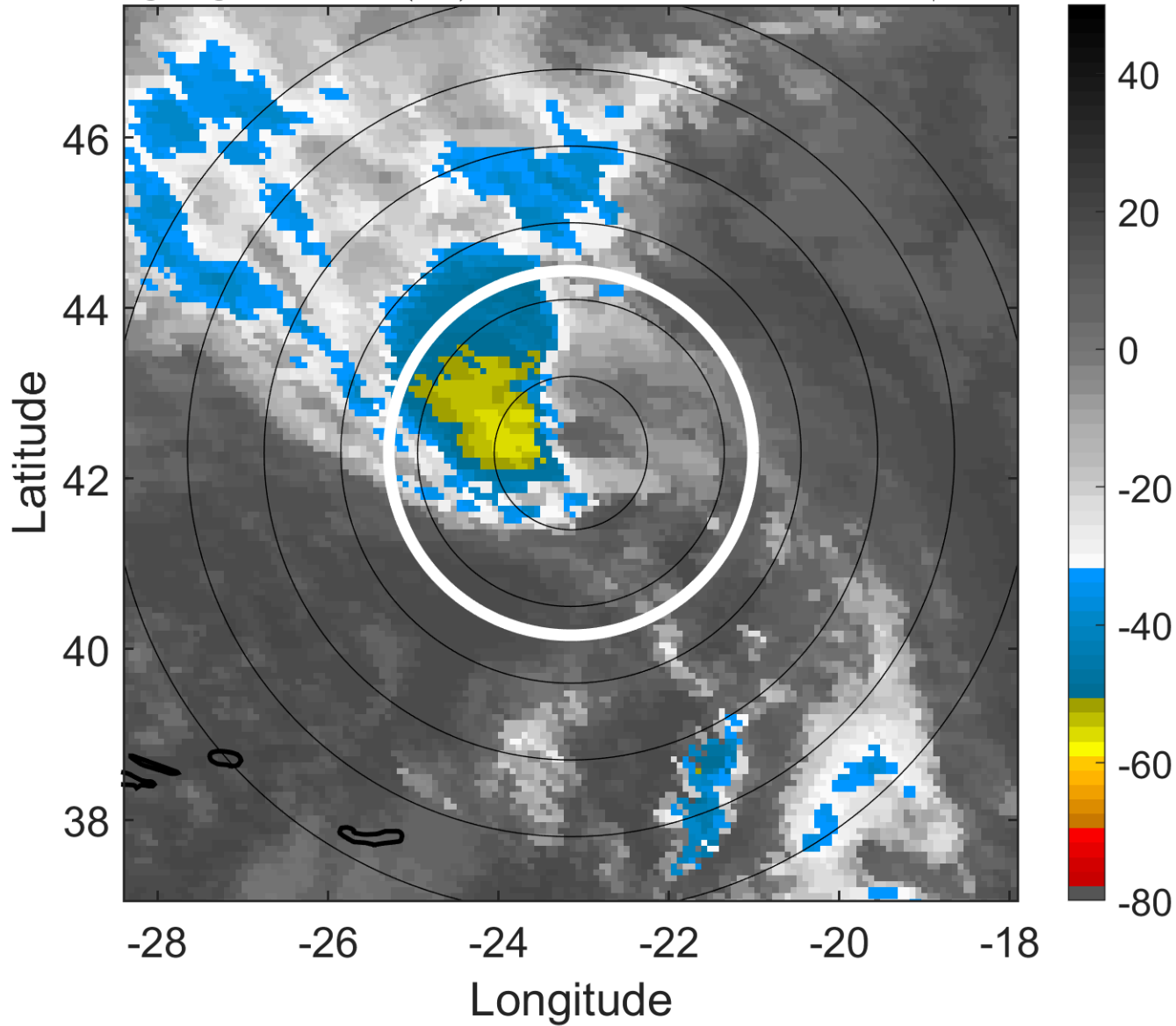
t: 2005100509 (7.5 LT)

Lightning: 7.5 LT \pm 1.5 h (dots)

PT: LLWP | EA: INACT

21L (UNNAMED) | 40 kt EX

S: null | H: null



6-h IR BT Differences & Lightning

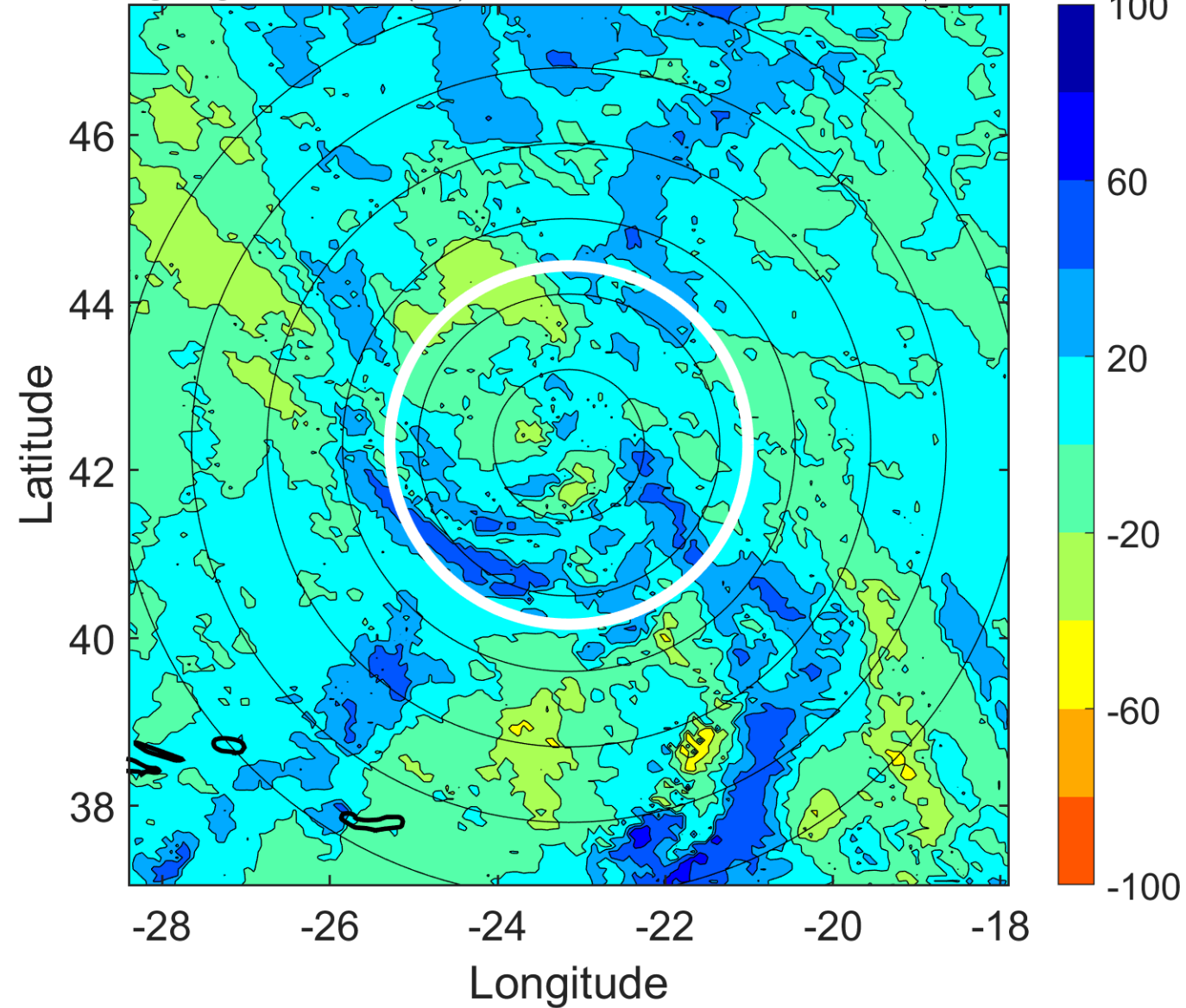
Δ t: 2005100509 (7.5 LT) - 2005100503 (1.4 LT)

Lightning: 7.5 LT \pm 1.5 h (dots)

PT: LLWP | EA: INACT

21L (UNNAMED) | 40 kt EX

S: null | H: null



IR BT & Lightning

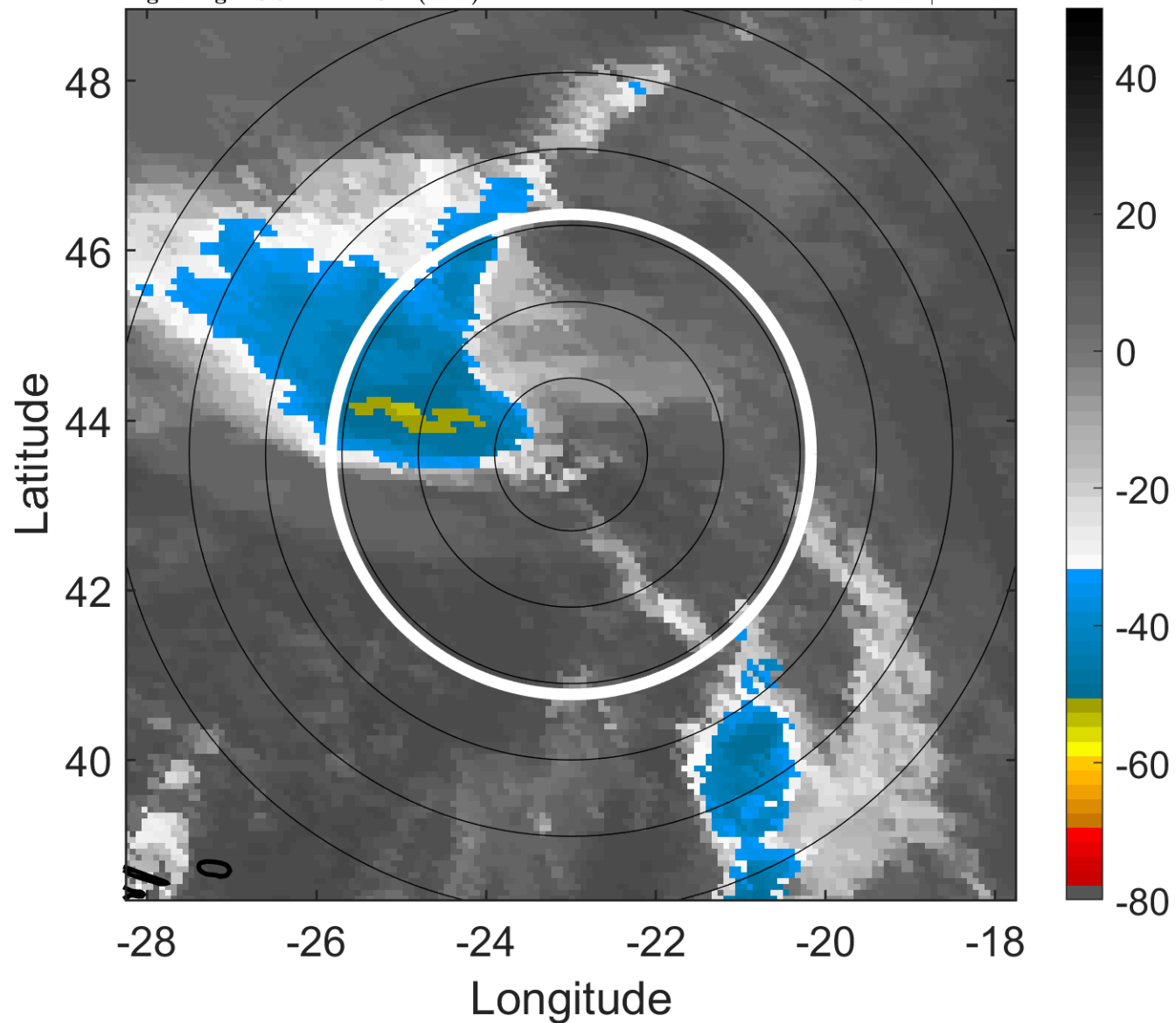
t: 2005100512 (10.5 LT)

Lightning: 10.5 LT \pm 1.5 h (dots)

PT: LLWP | EA: INACT

21L (UNNAMED) | 40 kt EX

S: null | H: null



6-h IR BT Differences & Lightning

Δ t: 2005100512 (10.5 LT) - 2005100506 (4.4 LT)

Lightning: 10.5 LT \pm 1.5 h (dots)

PT: LLWP | EA: INACT

21L (UNNAMED) | 40 kt EX

S: null | H: null

