

IR BT & Lightning

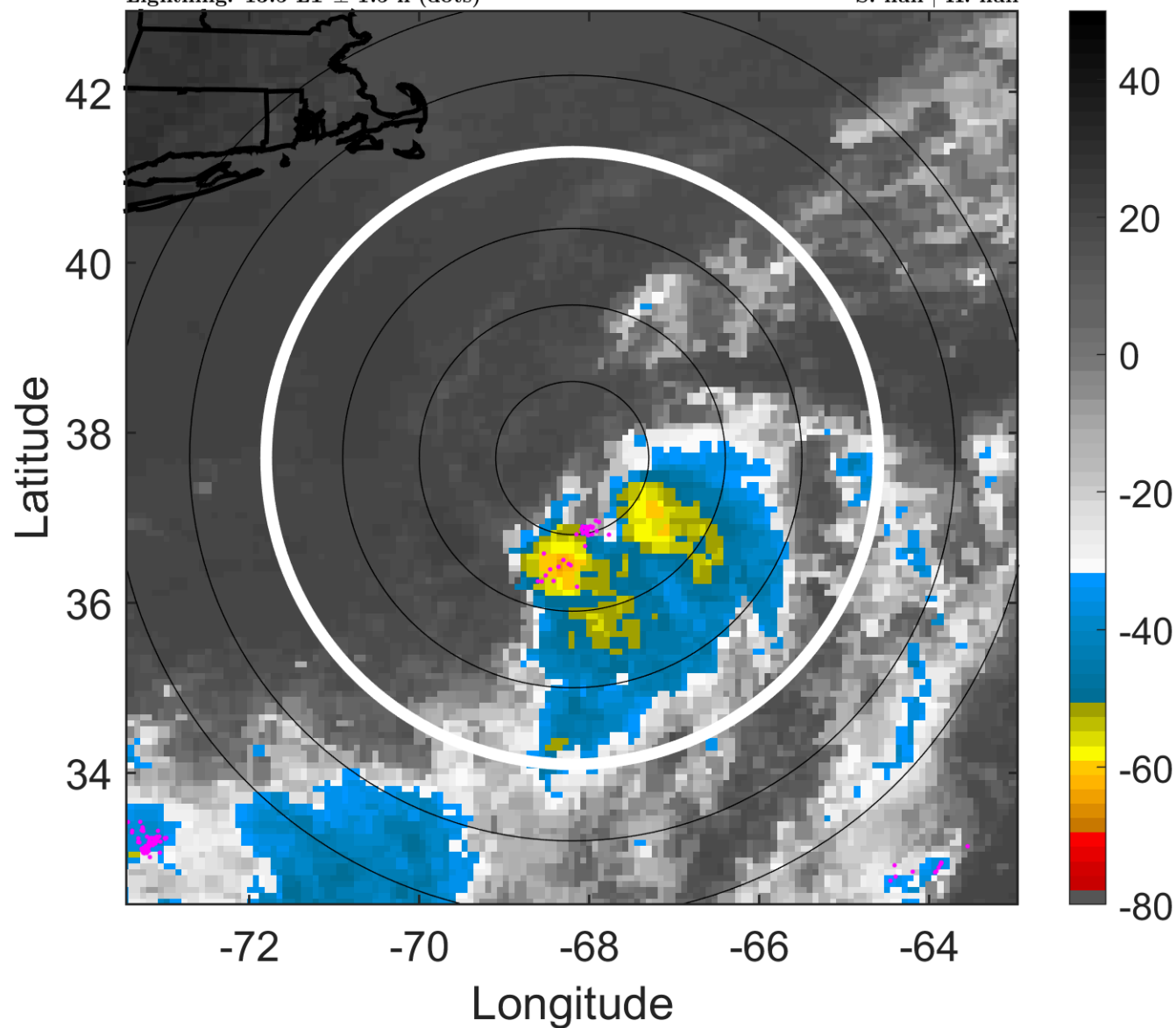
t: 2006071618 (13.5 LT)

Lightning: 13.5 LT \pm 1.5 h (dots)

PT: LLWP | EA: INACT

02L (UNNAMED) | 30 kt EX

S: null | H: null



6-h IR BT Differences & Lightning

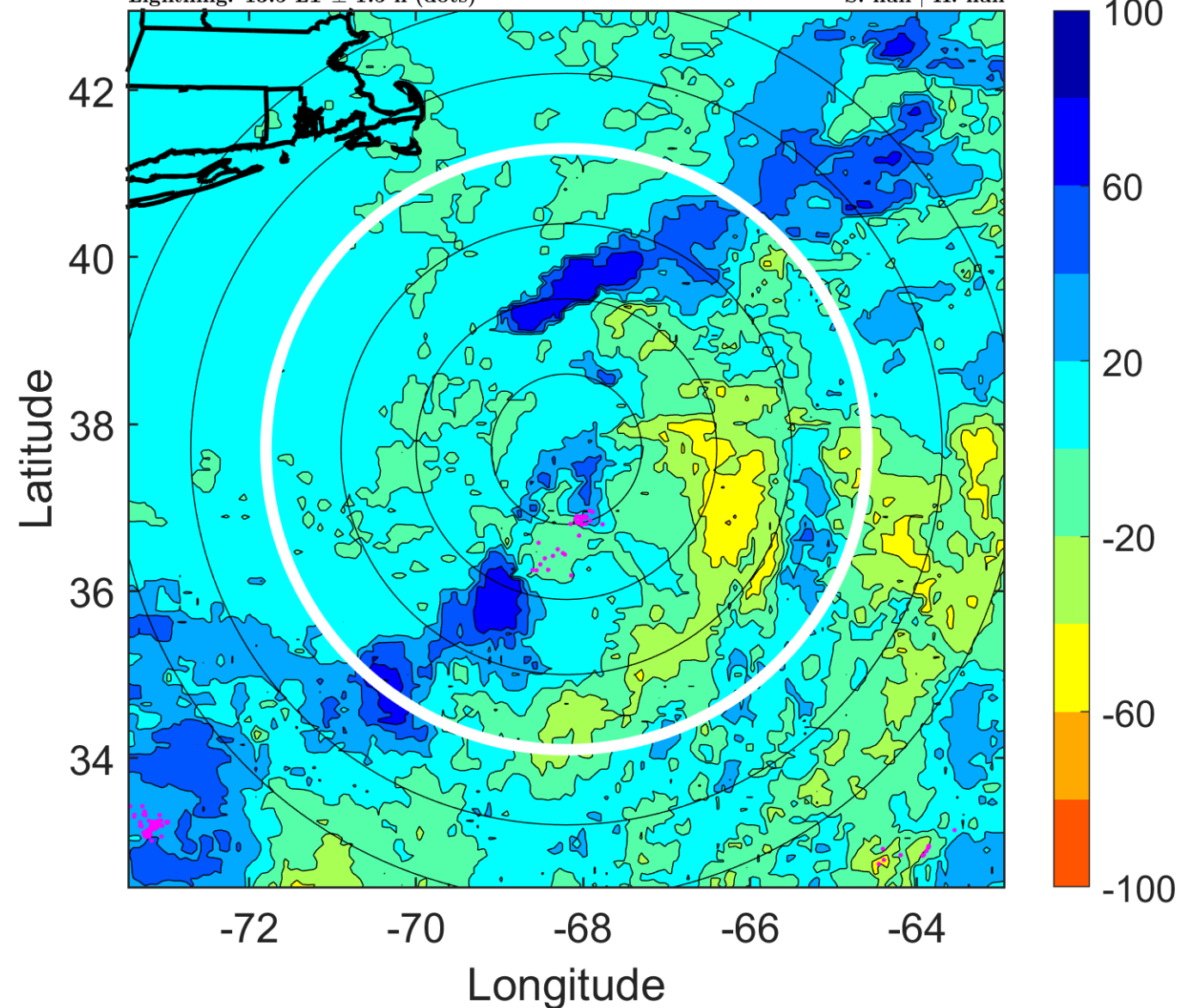
Δ t: 2006071618 (13.5 LT) - 2006071612 (7.4 LT)

Lightning: 13.5 LT \pm 1.5 h (dots)

PT: LLWP | EA: INACT

02L (UNNAMED) | 30 kt EX

S: null | H: null



IR BT & Lightning

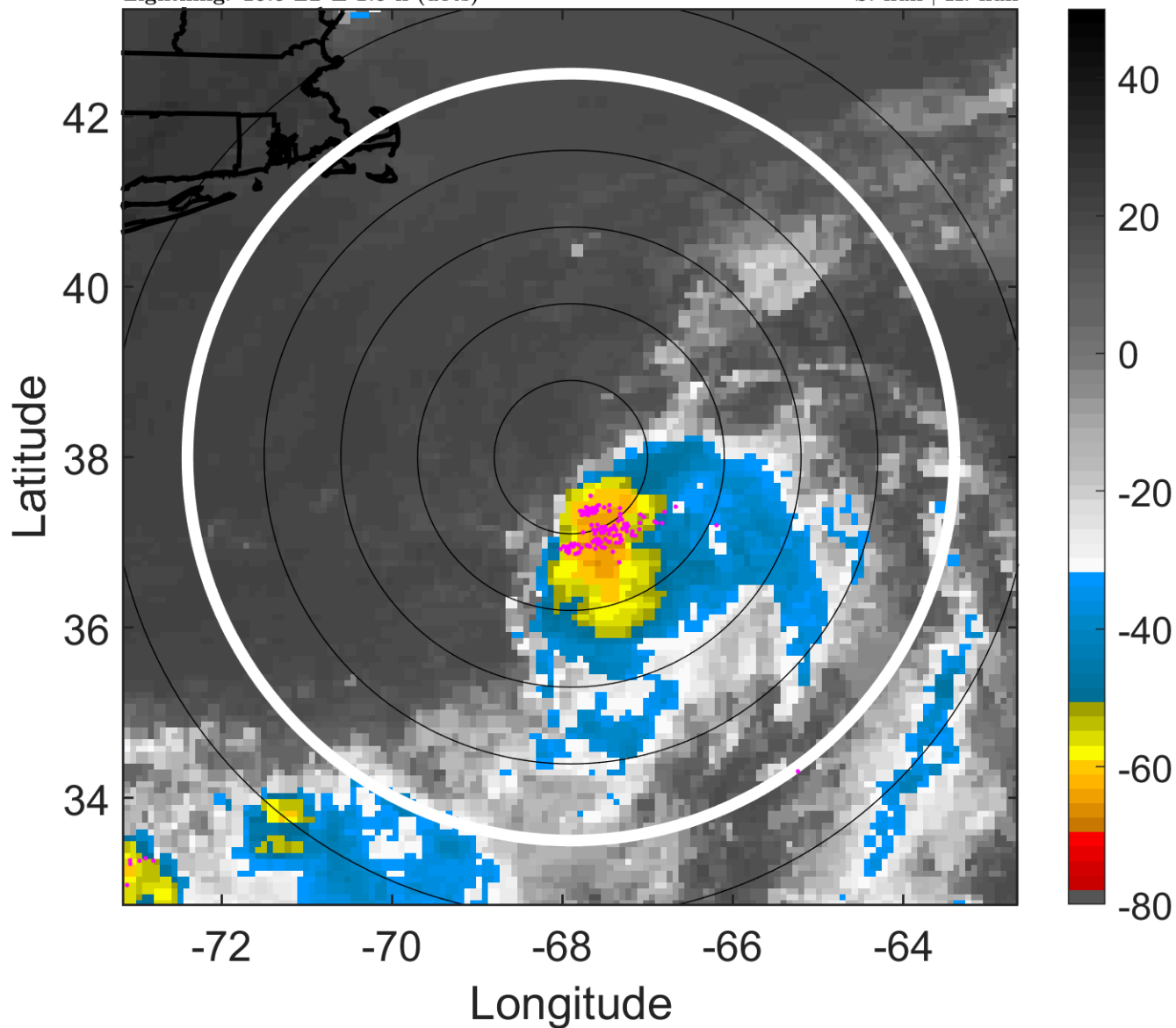
t: 2006071621 (16.5 LT)

Lightning: 16.5 LT \pm 1.5 h (dots)

PT: LLWP | EA: INACT

02L (UNNAMED) | 30 kt EX

S: null | H: null



6-h IR BT Differences & Lightning

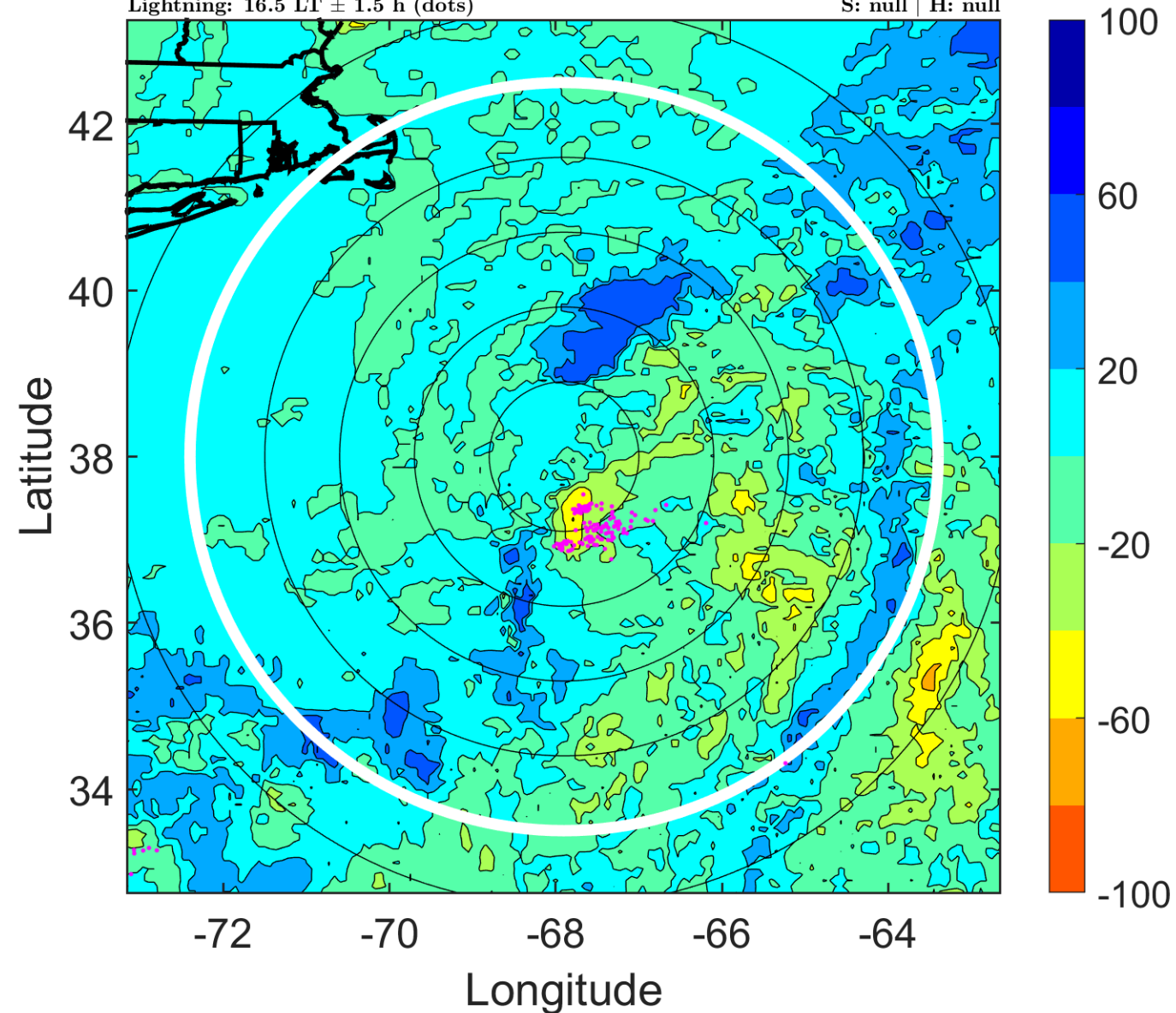
Δ t: 2006071621 (16.5 LT) - 2006071615 (10.4 LT)

Lightning: 16.5 LT \pm 1.5 h (dots)

PT: LLWP | EA: INACT

02L (UNNAMED) | 30 kt EX

S: null | H: null



IR BT & Lightning

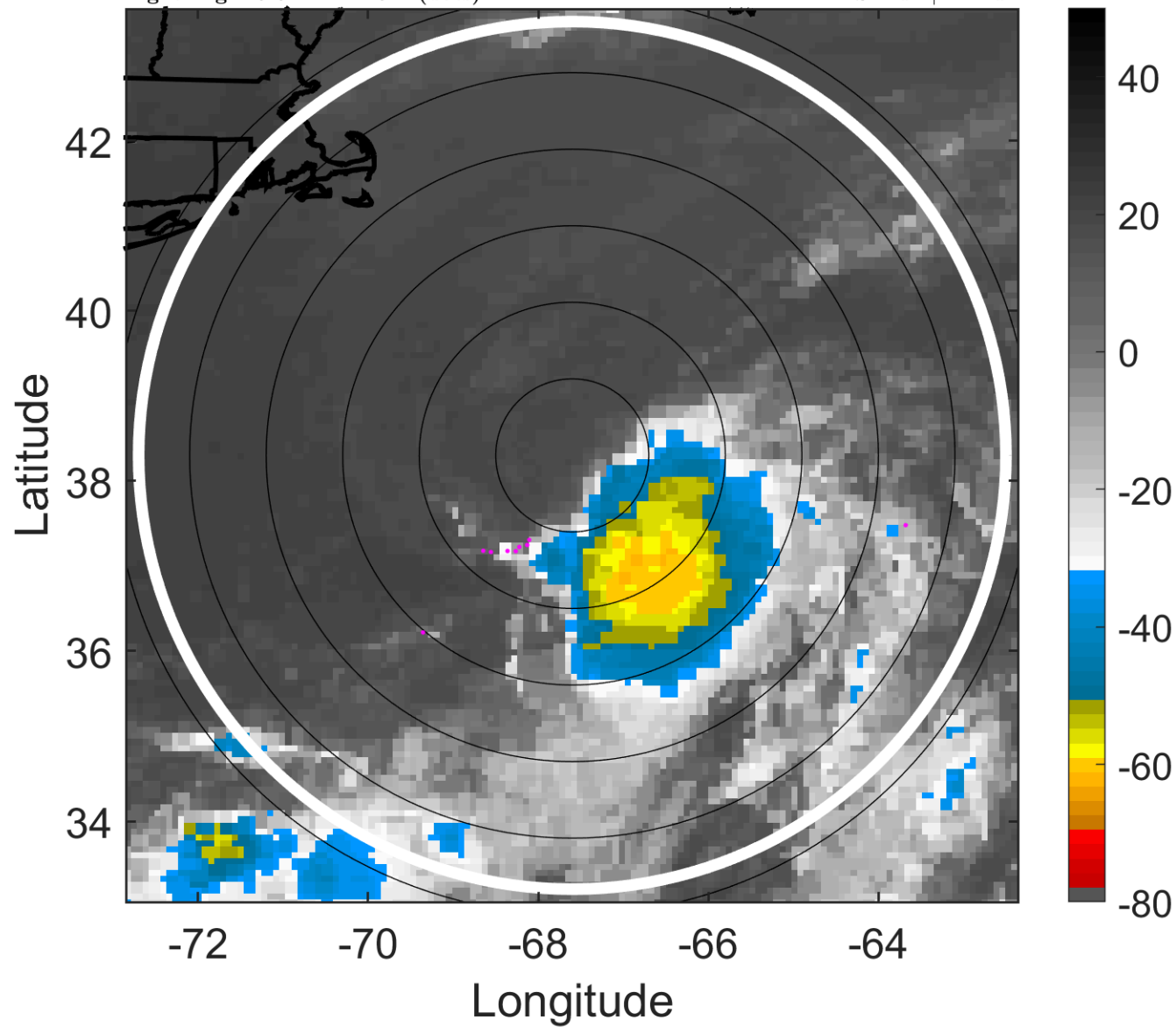
t: 2006071700 (19.5 LT)

Lightning: 19.5 LT \pm 1.5 h (dots)

PT: LLWP | EA: INACT

02L (UNNAMED) | 30 kt EX

S: null | H: null



6-h IR BT Differences & Lightning

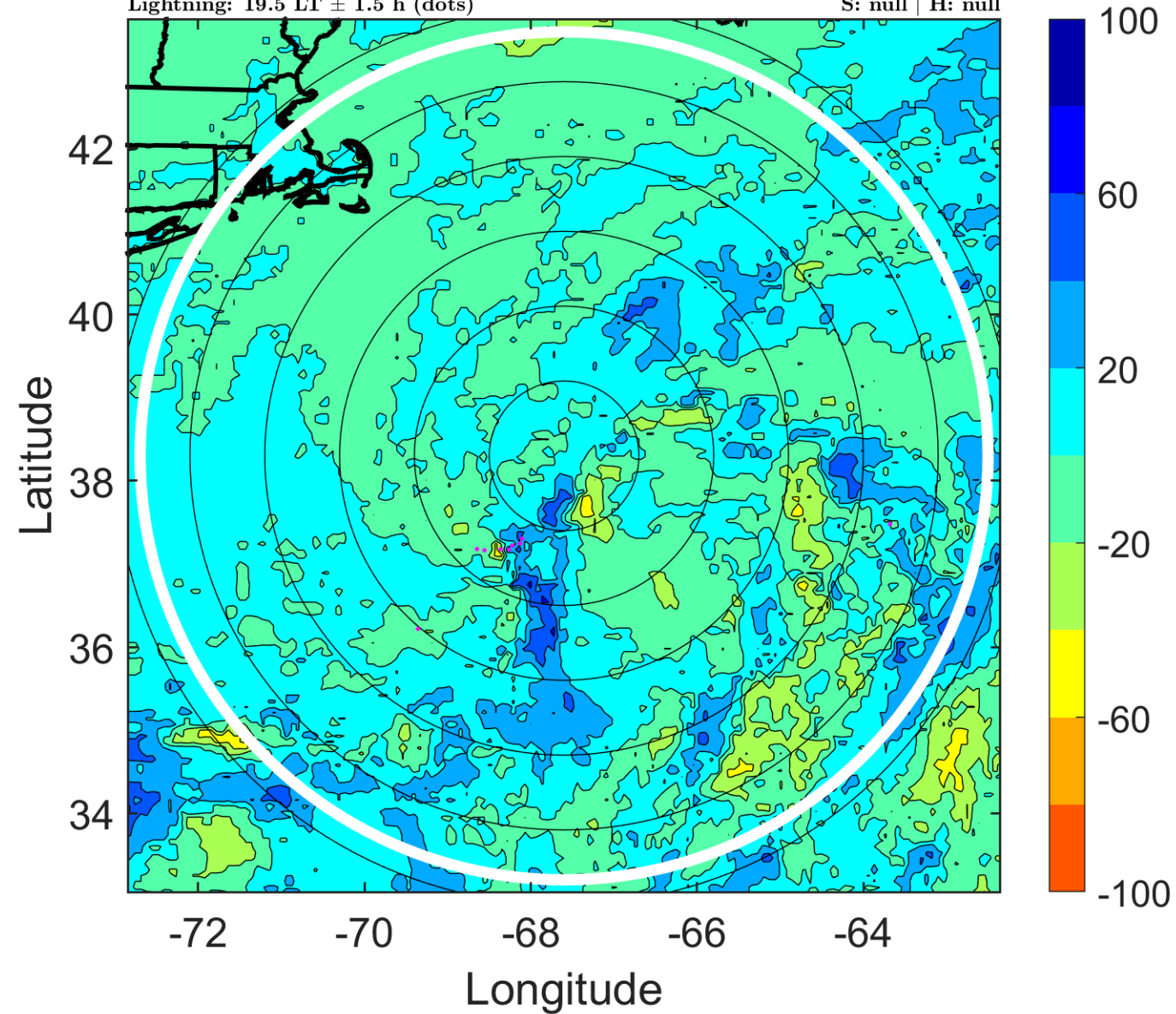
Δ t: 2006071700 (19.5 LT) - 2006071618 (13.5 LT)

Lightning: 19.5 LT \pm 1.5 h (dots)

PT: LLWP | EA: INACT

02L (UNNAMED) | 30 kt EX

S: null | H: null



IR BT & Lightning

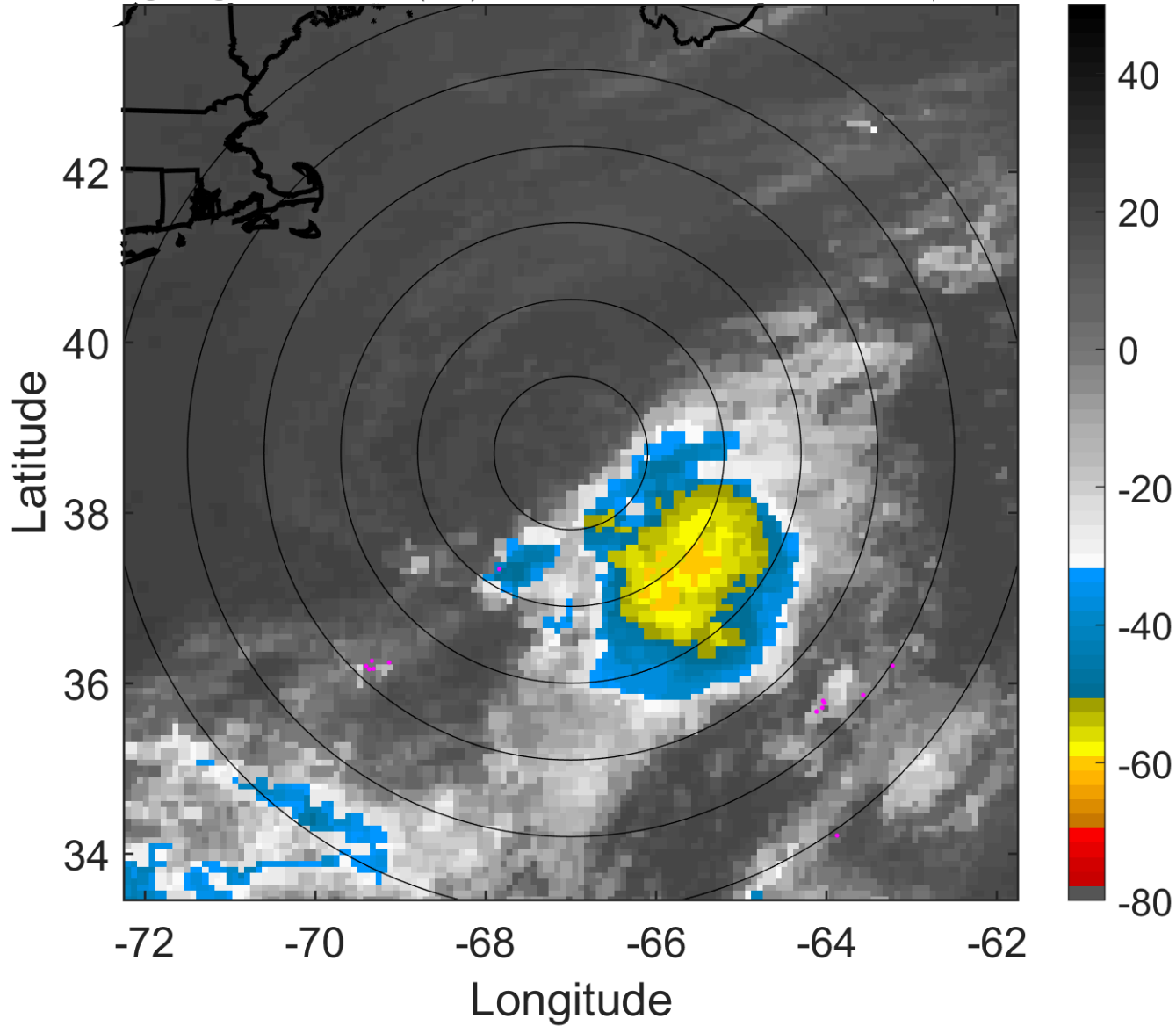
t: 2006071703 (22.5 LT)

Lightning: 22.5 LT \pm 1.5 h (dots)

PT: LLWP | EA: INACT

02L (UNNAMED) | 30 kt EX

S: null | H: null



6-h IR BT Differences & Lightning

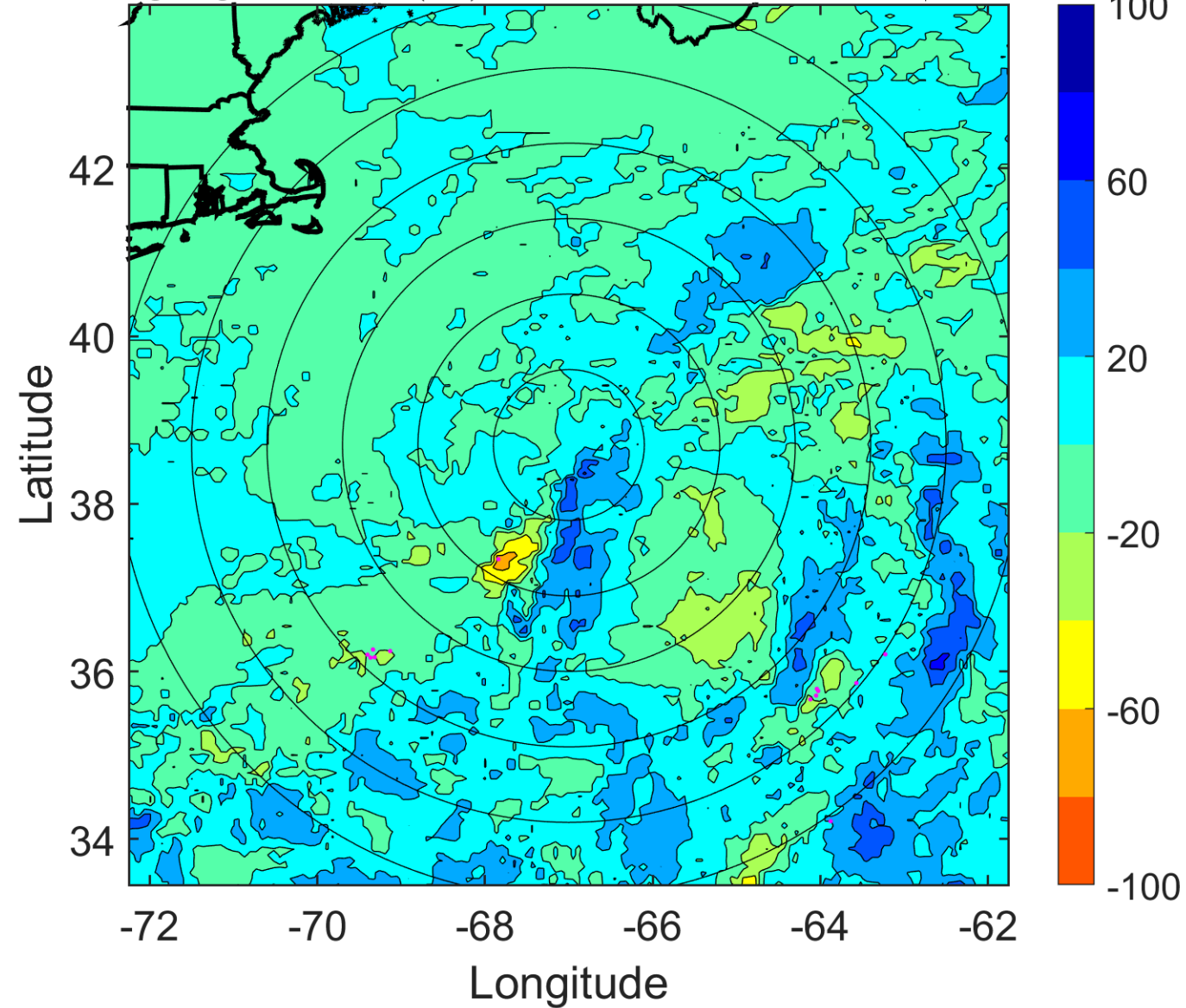
Δ t: 2006071703 (22.5 LT) - 2006071621 (16.5 LT)

Lightning: 22.5 LT \pm 1.5 h (dots)

PT: LLWP | EA: INACT

02L (UNNAMED) | 30 kt EX

S: null | H: null



IR BT & Lightning

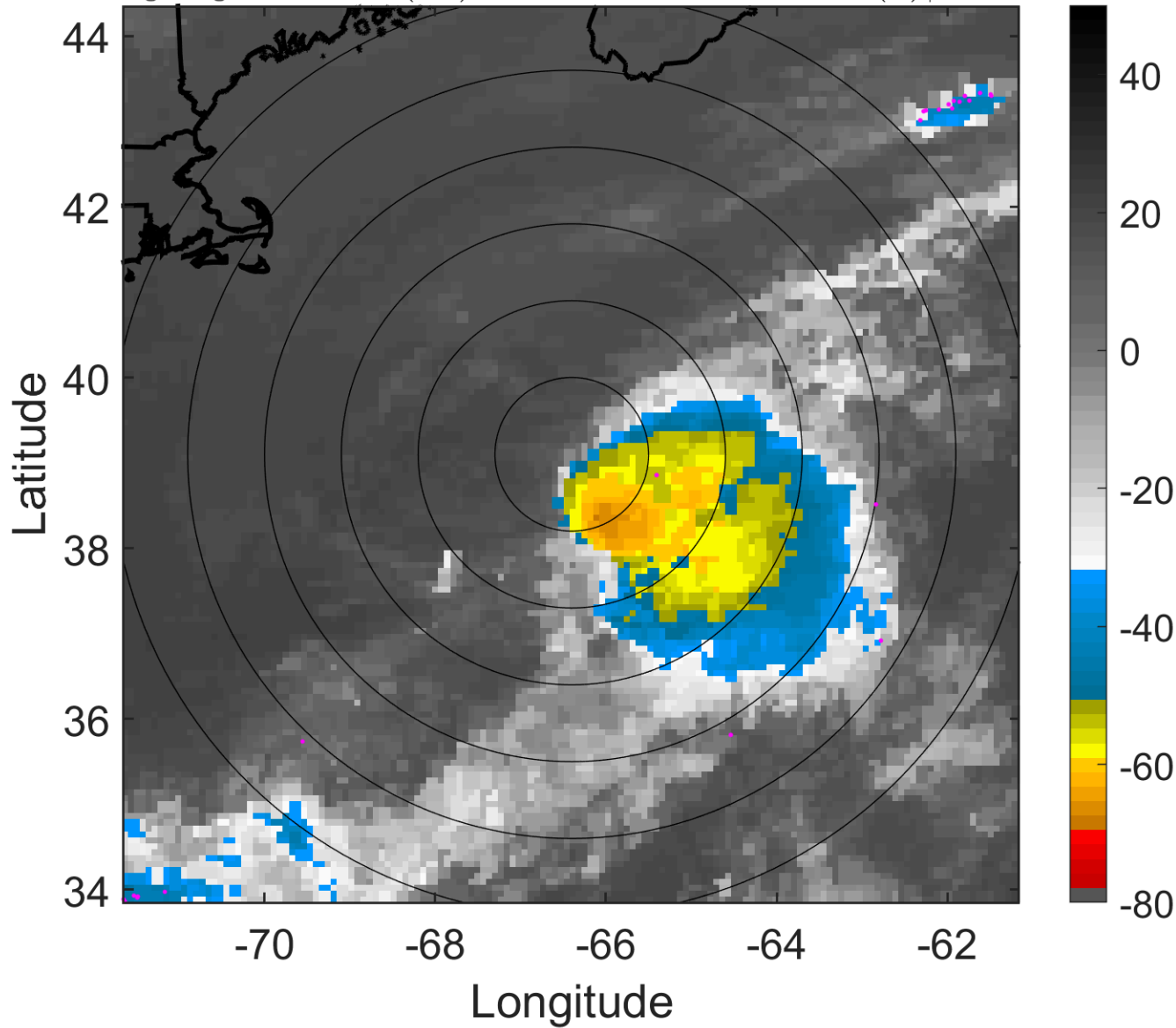
t: 2006071706 (1.6 LT)

Lightning: 1.6 LT \pm 1.5 h (dots)

PT: LLCP | EA: INACT

02L (UNNAMED) | 30 kt TD

S: 5.8 m s⁻¹ (M) | H: 116°



6-h IR BT Differences & Lightning

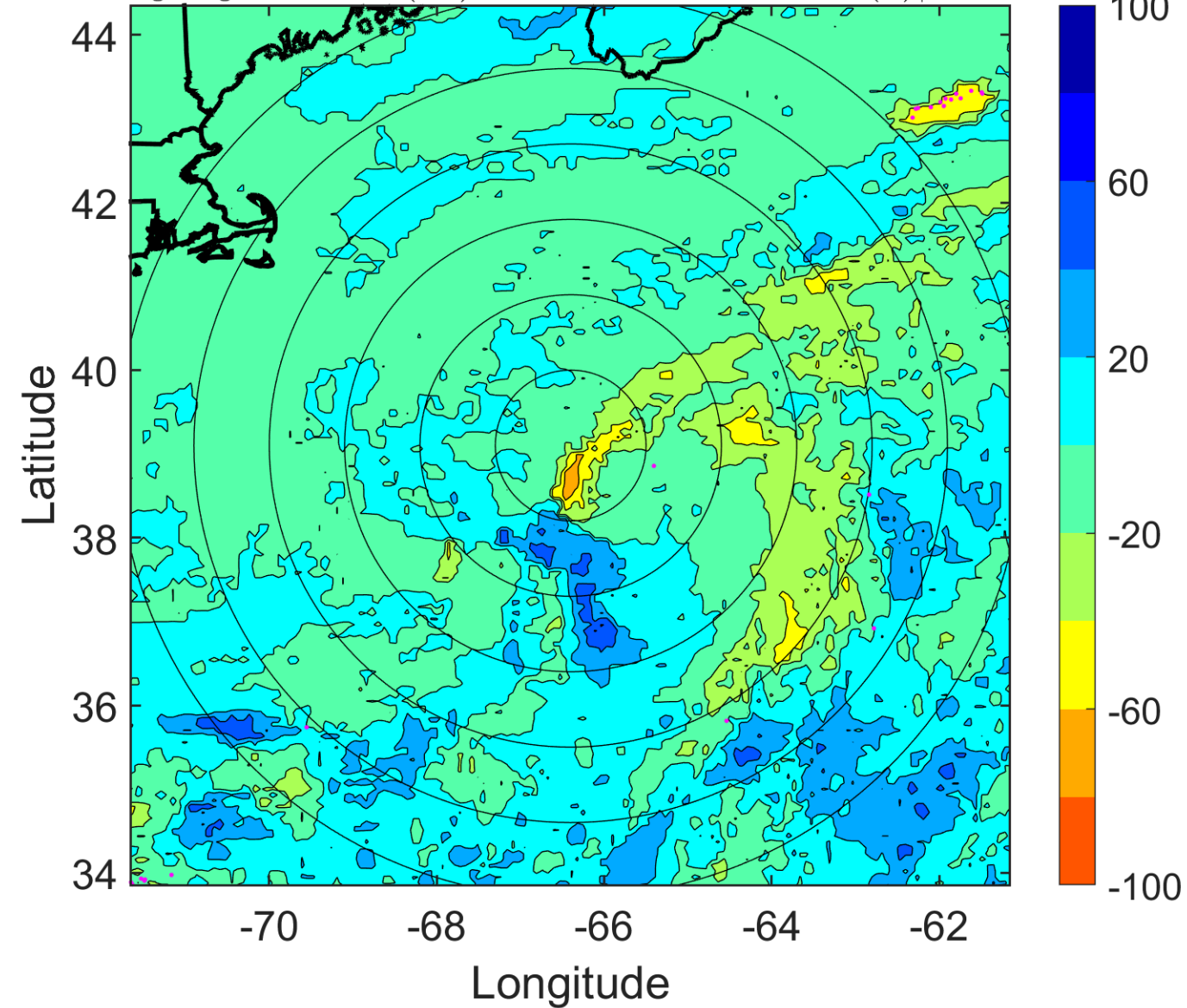
Δ t: 2006071706 (1.6 LT) - 2006071700 (19.5 LT)

Lightning: 1.6 LT \pm 1.5 h (dots)

PT: LLCP | EA: INACT

02L (UNNAMED) | 30 kt TD

S: 5.8 m s⁻¹ (M) | H: 116°



IR BT & Lightning

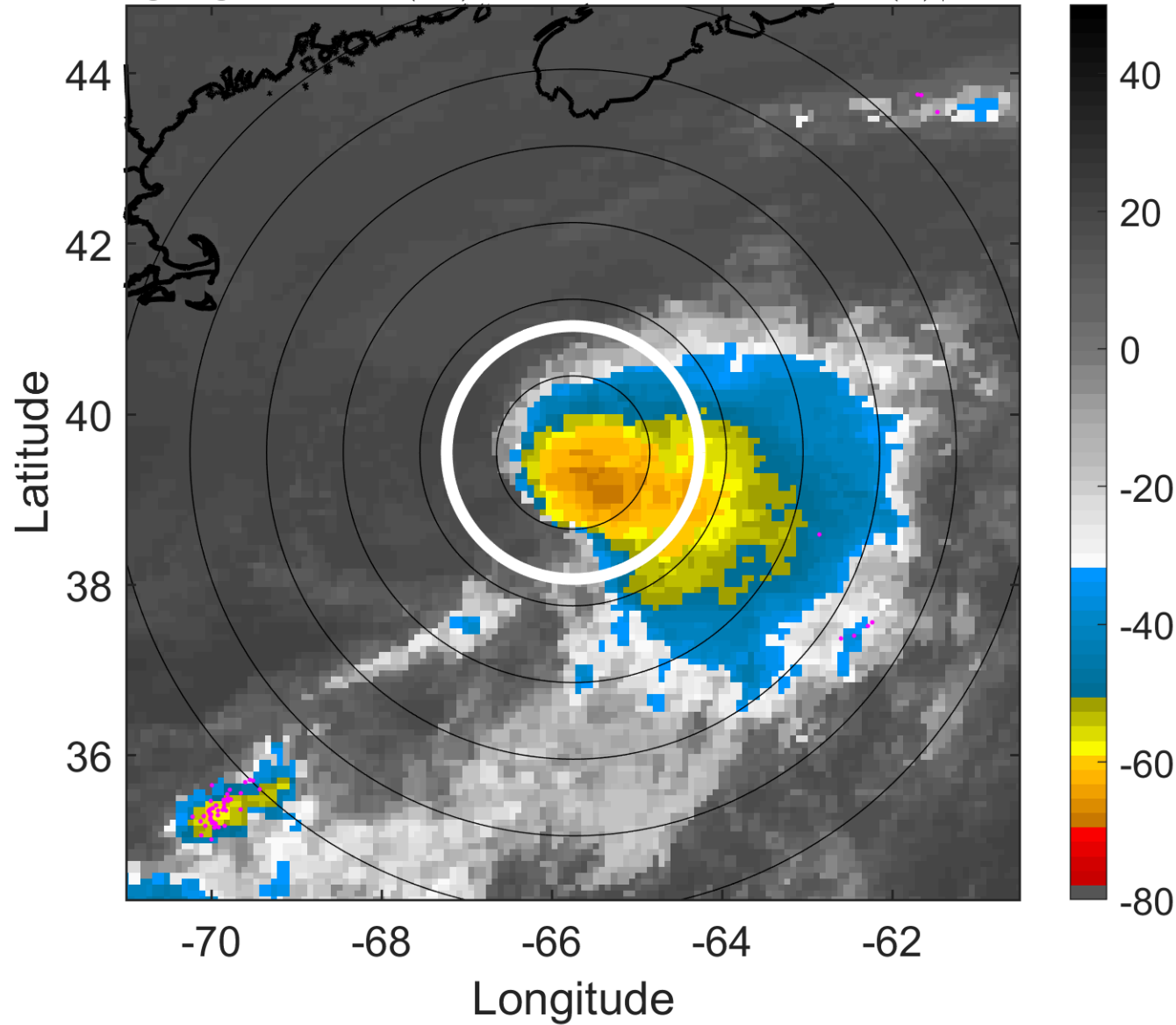
t: 2006071709 (4.6 LT)

Lightning: 4.6 LT \pm 1.5 h (dots)

PT: LLCP | EA: INACT

02L (UNNAMED) | 35 kt TS

S: 5.5 m s⁻¹ (M) | H: 94°



6-h IR BT Differences & Lightning

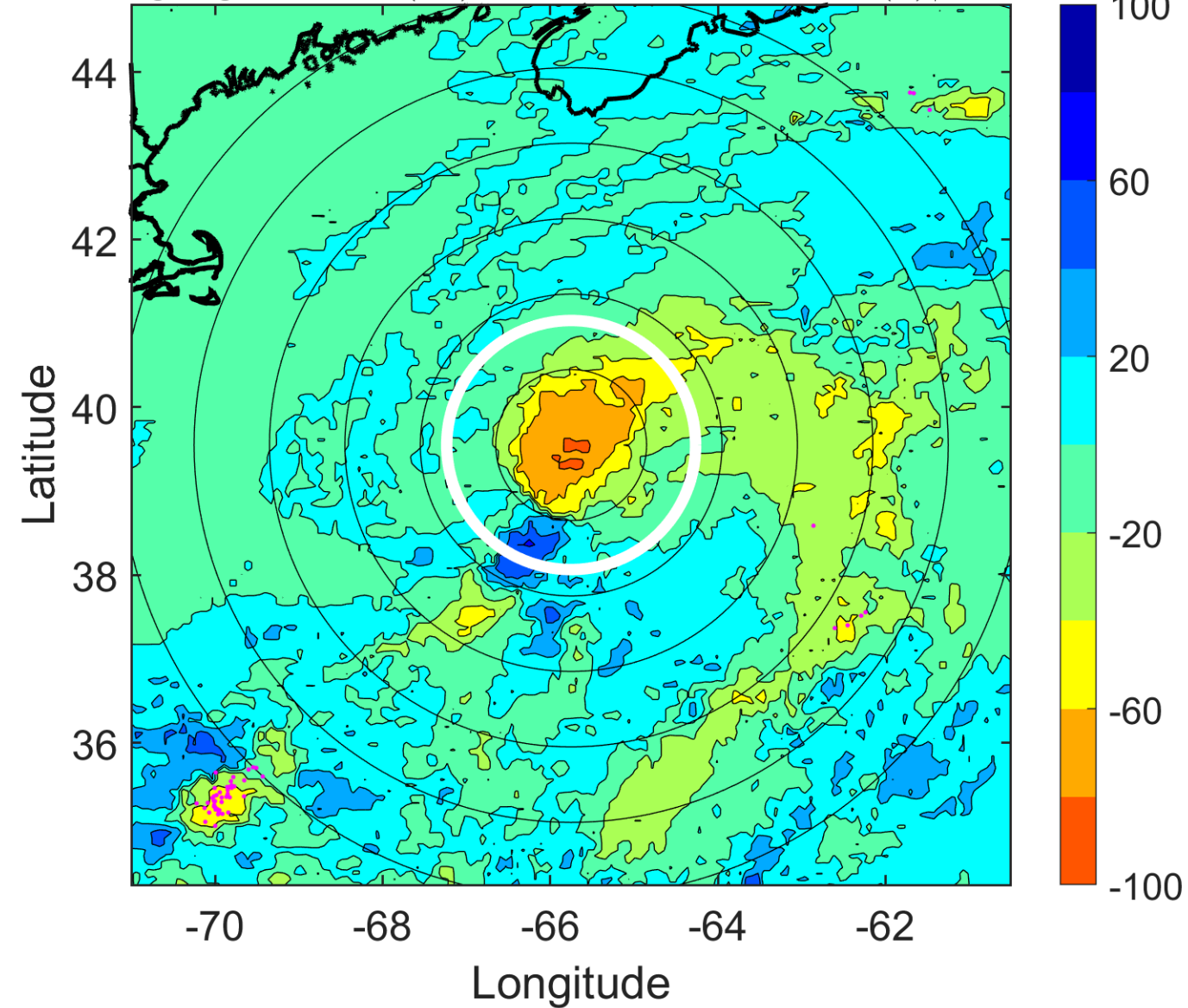
Δ t: 2006071709 (4.6 LT) - 2006071703 (22.5 LT)

Lightning: 4.6 LT \pm 1.5 h (dots)

PT: LLCP | EA: INACT

02L (UNNAMED) | 35 kt TS

S: 5.5 m s⁻¹ (M) | H: 94°



IR BT & Lightning

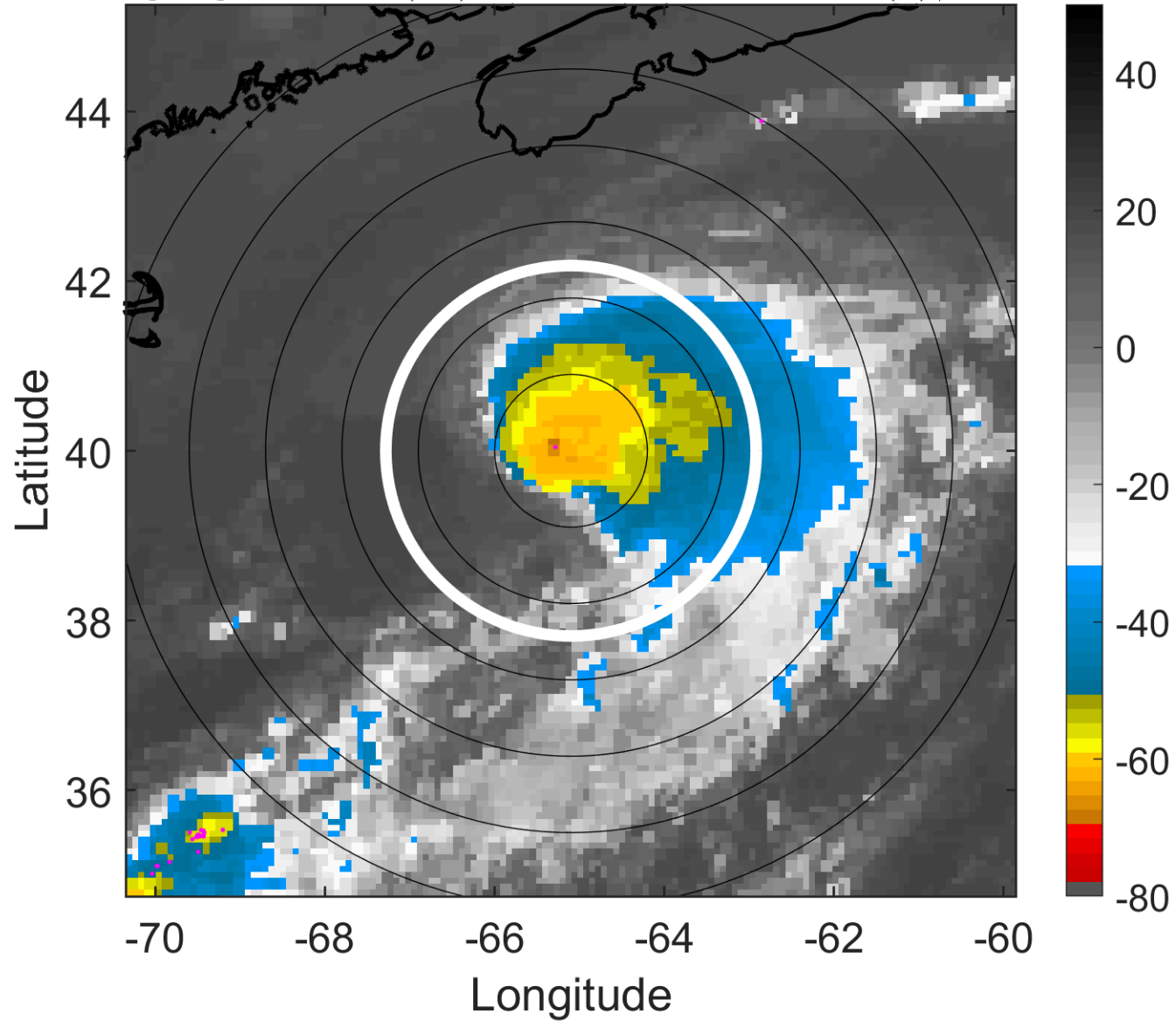
t: 2006071712 (7.7 LT)

Lightning: 7.7 LT \pm 1.5 h (dots)

PT: LLCP | EA: INACT

02L (UNNAMED) | 40 kt TS

S: 5.1 m s⁻¹ (M) | H: 72°



6-h IR BT Differences & Lightning

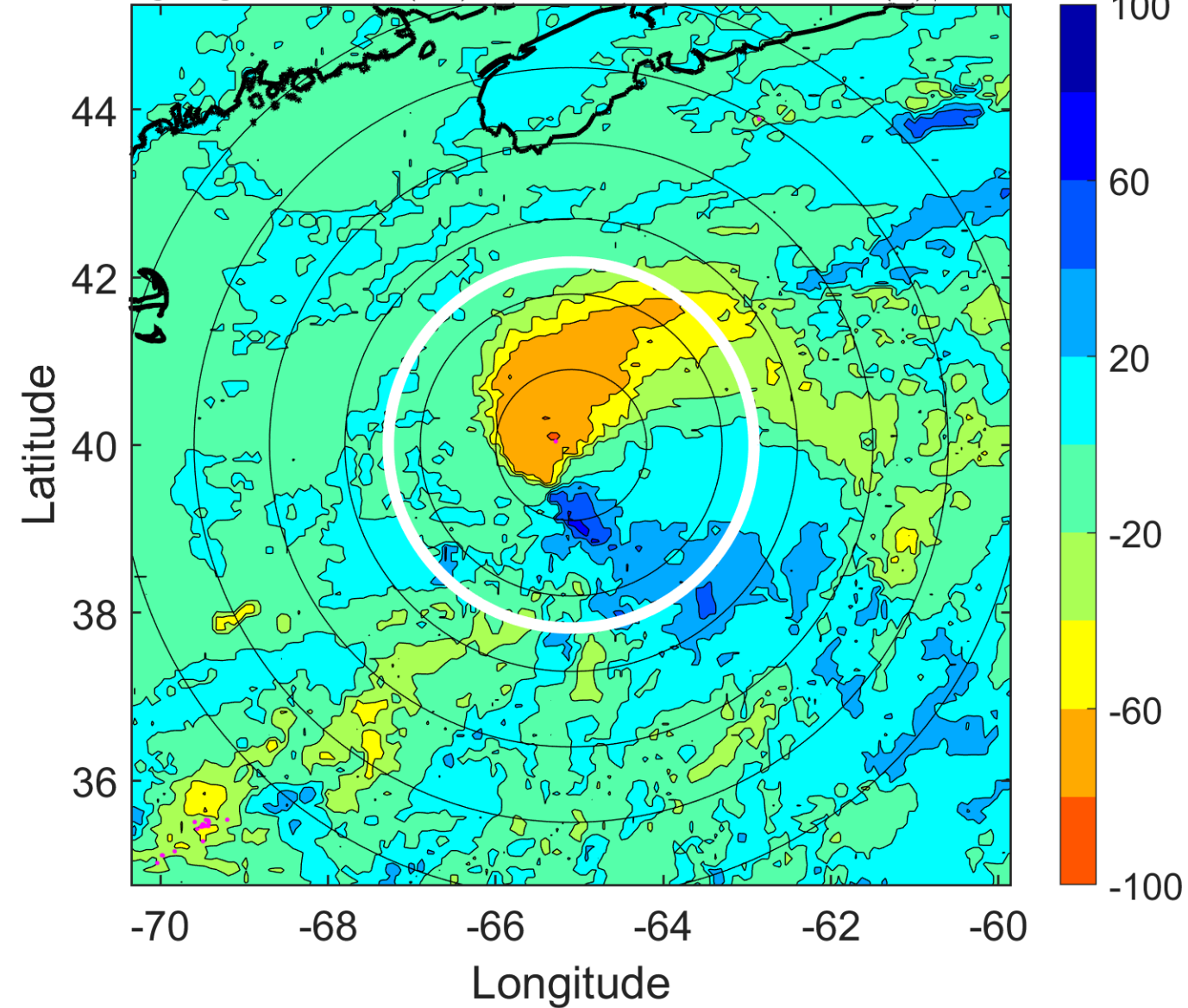
Δ t: 2006071712 (7.7 LT) - 2006071706 (1.6 LT)

Lightning: 7.7 LT \pm 1.5 h (dots)

PT: LLCP | EA: INACT

02L (UNNAMED) | 40 kt TS

S: 5.1 m s⁻¹ (M) | H: 72°



IR BT & Lightning

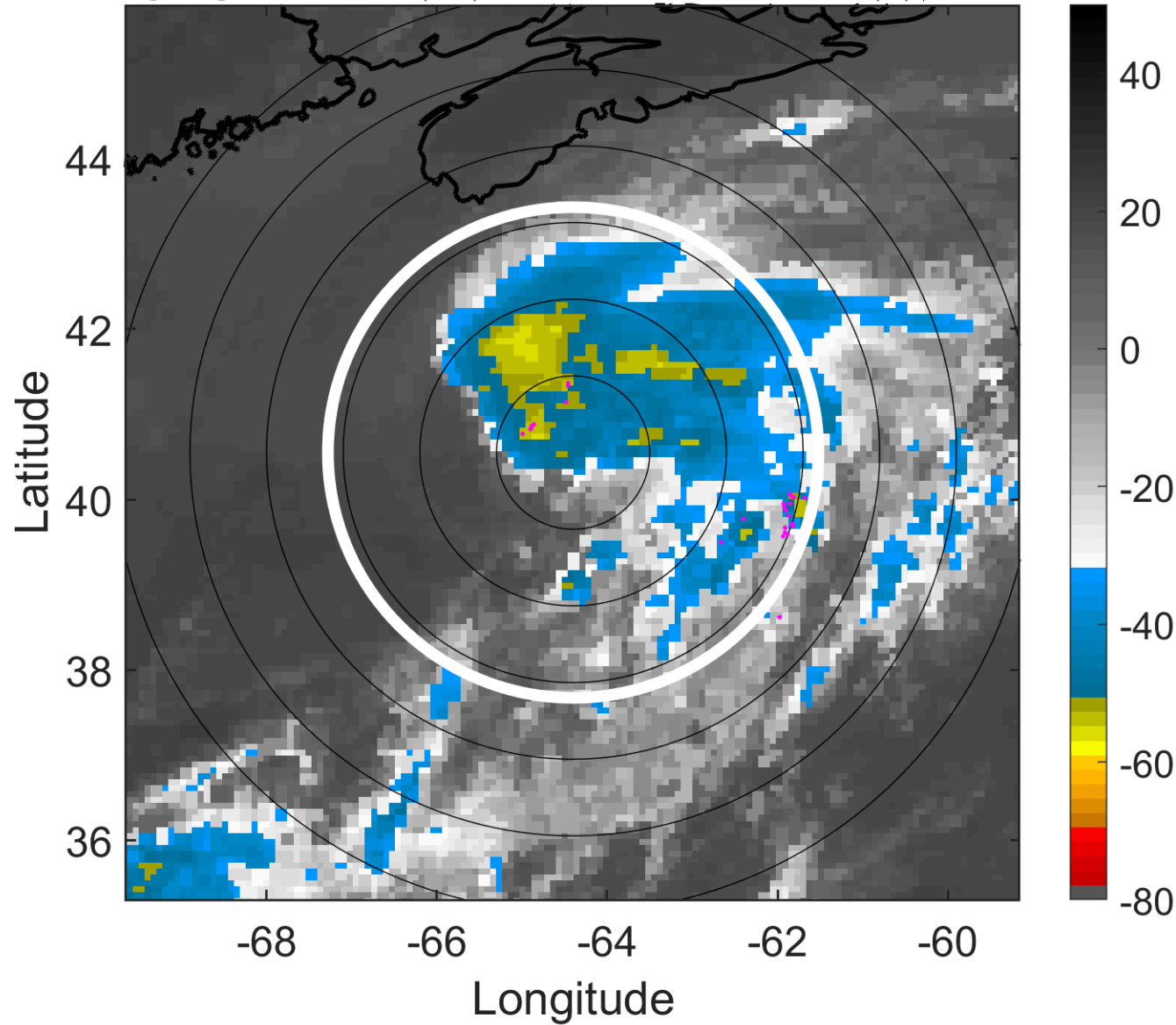
t: 2006071715 (10.7 LT)

Lightning: 10.7 LT \pm 1.5 h (dots)

PT: LLCP | EA: INACT

02L (UNNAMED) | 42.5 kt TS

S: 7.4 m s⁻¹ (M) | H: 67.5°



6-h IR BT Differences & Lightning

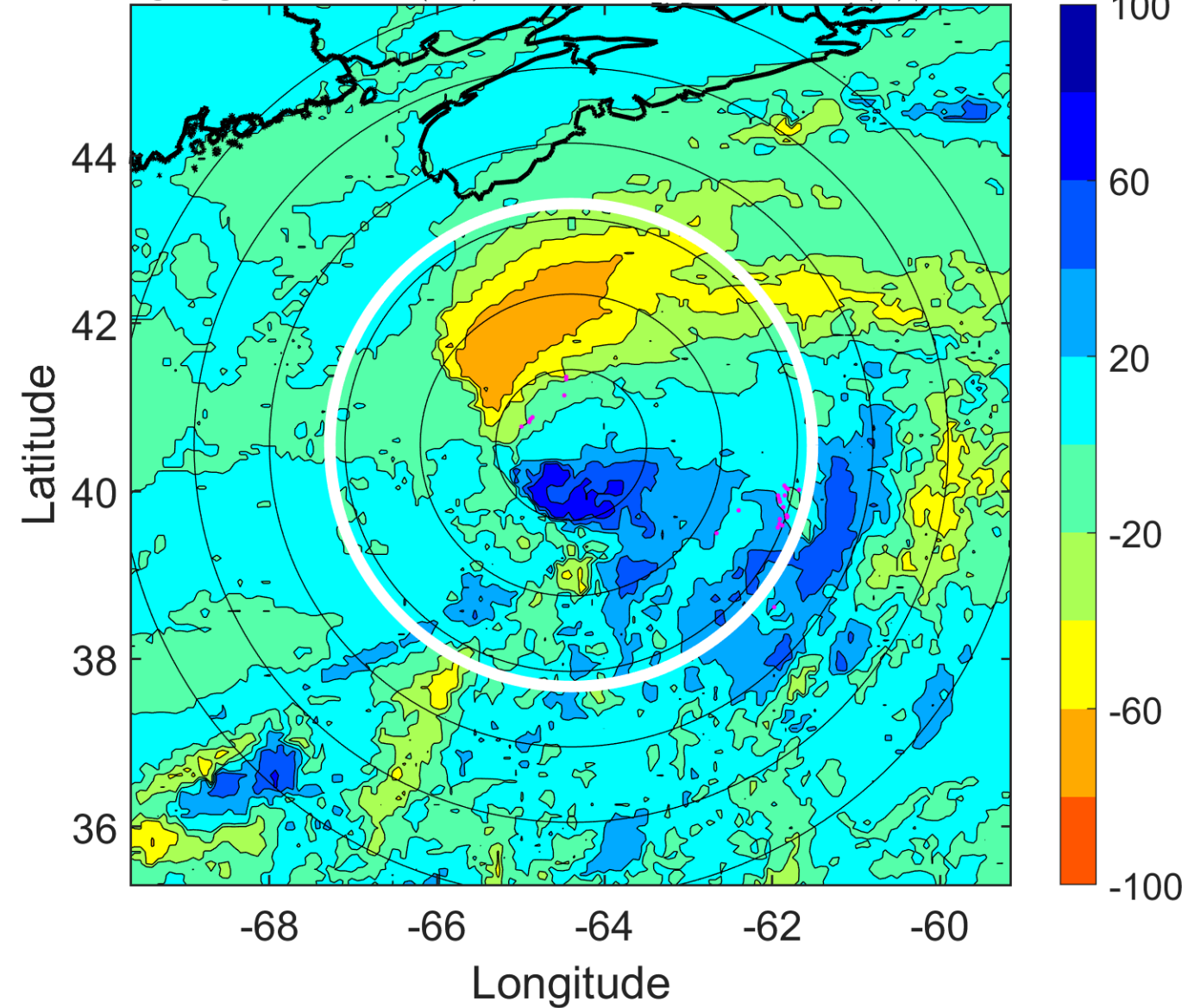
Δ t: 2006071715 (10.7 LT) - 2006071709 (4.6 LT)

Lightning: 10.7 LT \pm 1.5 h (dots)

PT: LLCP | EA: INACT

02L (UNNAMED) | 42.5 kt TS

S: 7.4 m s⁻¹ (M) | H: 67.5°



IR BT & Lightning

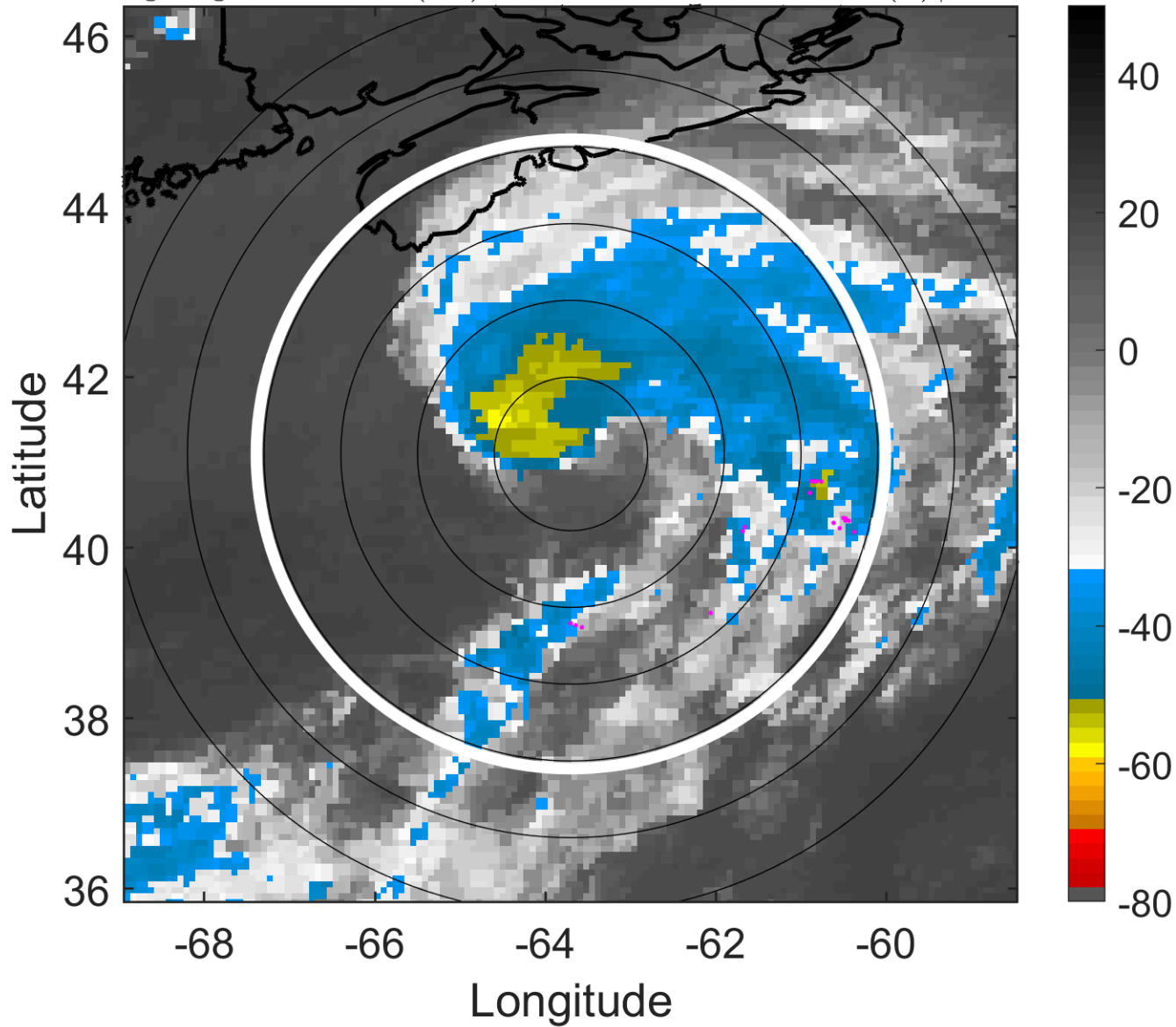
t: 2006071718 (13.8 LT)

Lightning: 13.8 LT \pm 1.5 h (dots)

PT: LLCP | EA: INACT

02L (UNNAMED) | 45 kt TS

S: 9.7 m s⁻¹ (M) | H: 63°



6-h IR BT Differences & Lightning

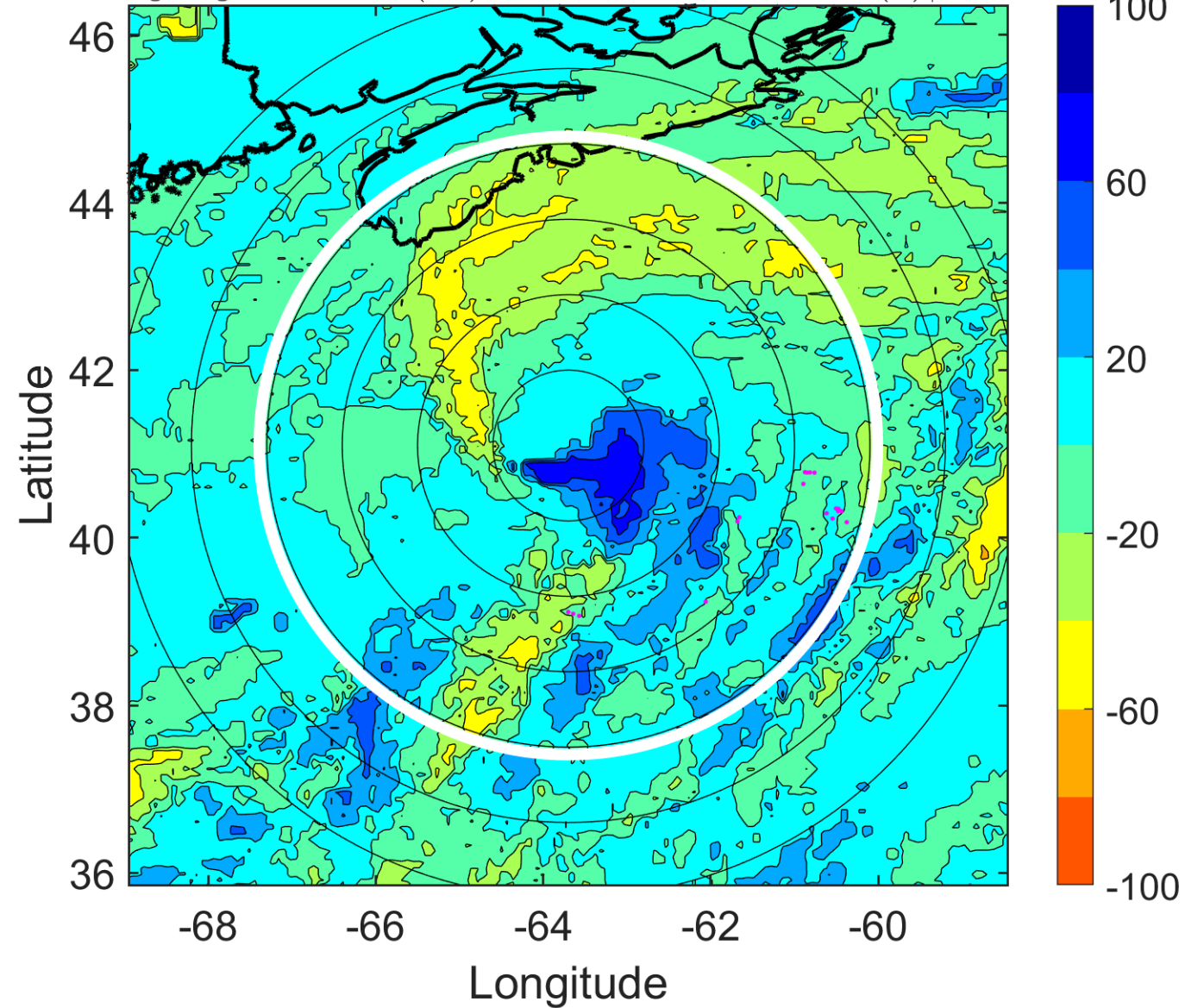
Δ t: 2006071718 (13.8 LT) - 2006071712 (7.7 LT)

Lightning: 13.8 LT \pm 1.5 h (dots)

PT: LLCP | EA: INACT

02L (UNNAMED) | 45 kt TS

S: 9.7 m s⁻¹ (M) | H: 63°



IR BT & Lightning

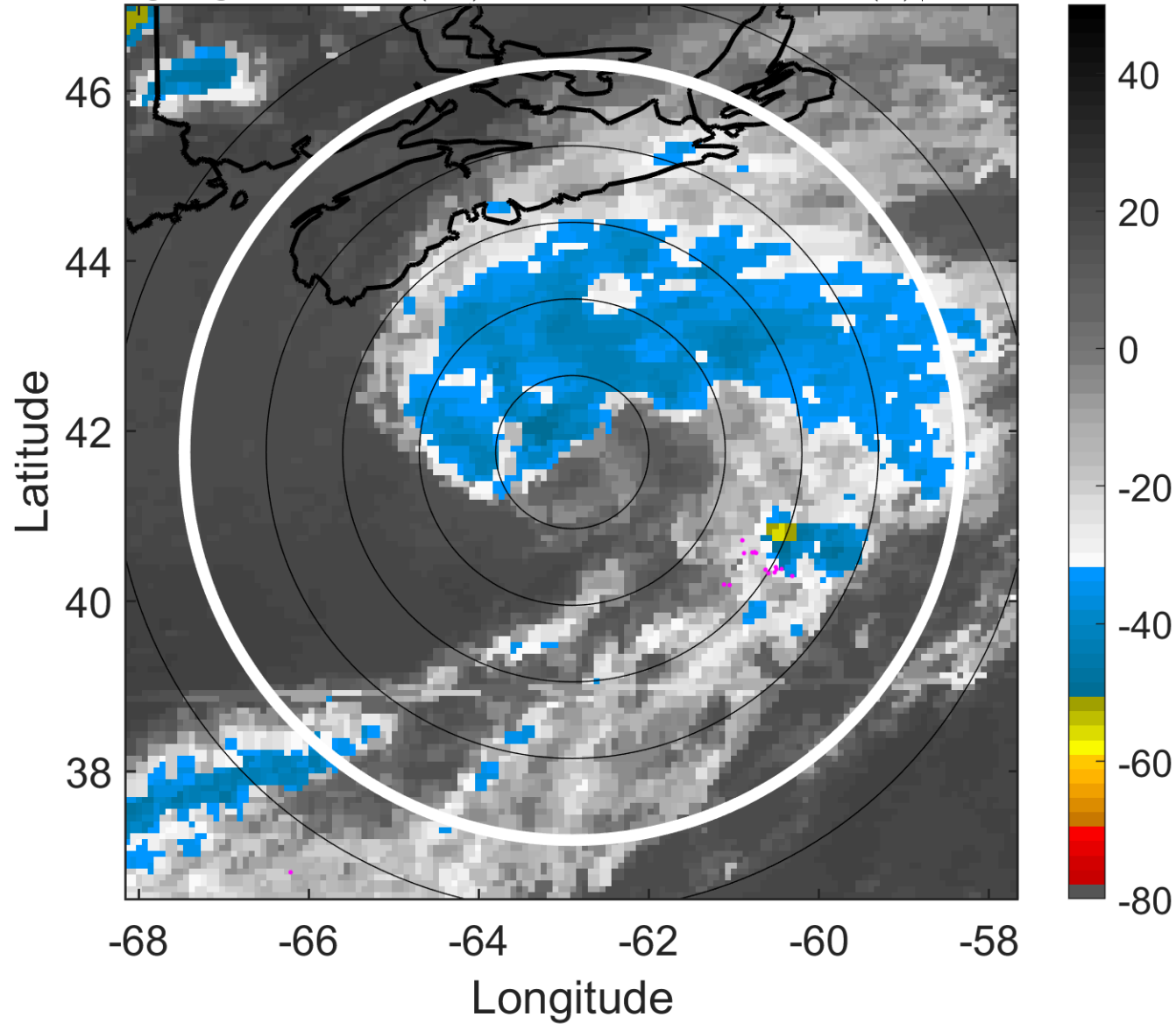
t: 2006071721 (16.8 LT)

Lightning: 16.8 LT \pm 1.5 h (dots)

PT: LLCP | EA: INACT

02L (UNNAMED) | 42.5 kt TS

S: 9.4 m s⁻¹ (M) | H: 68.5°



6-h IR BT Differences & Lightning

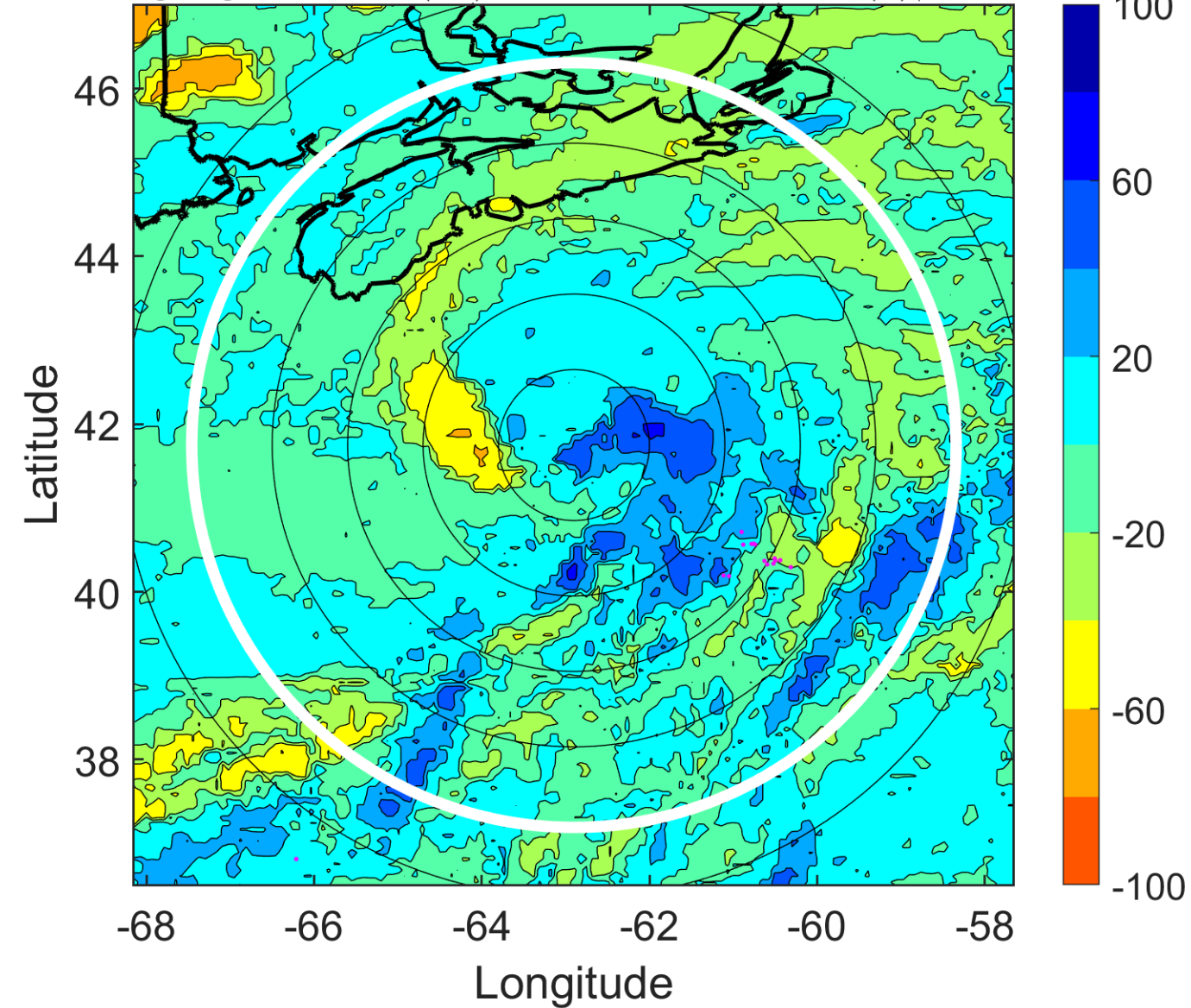
Δ t: 2006071721 (16.8 LT) - 2006071715 (10.7 LT)

Lightning: 16.8 LT \pm 1.5 h (dots)

PT: LLCP | EA: INACT

02L (UNNAMED) | 42.5 kt TS

S: 9.4 m s⁻¹ (M) | H: 68.5°



IR BT & Lightning

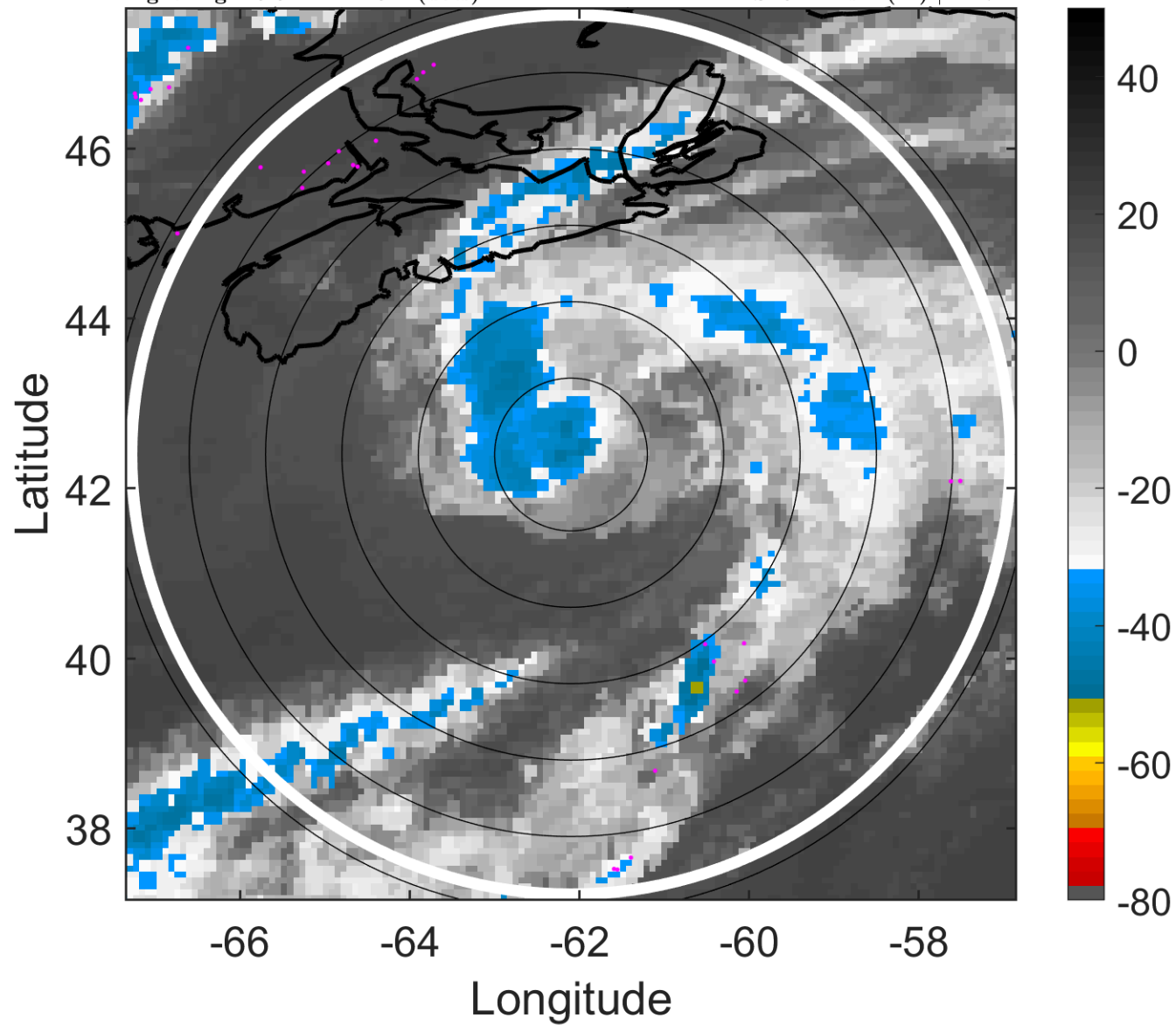
t: 2006071800 (19.9 LT)

Lightning: 19.9 LT \pm 1.5 h (dots)

PT: LLCP | EA: INACT

02L (UNNAMED) | 40 kt TS

S: 9.1 m s⁻¹ (M) | H: 74°



6-h IR BT Differences & Lightning

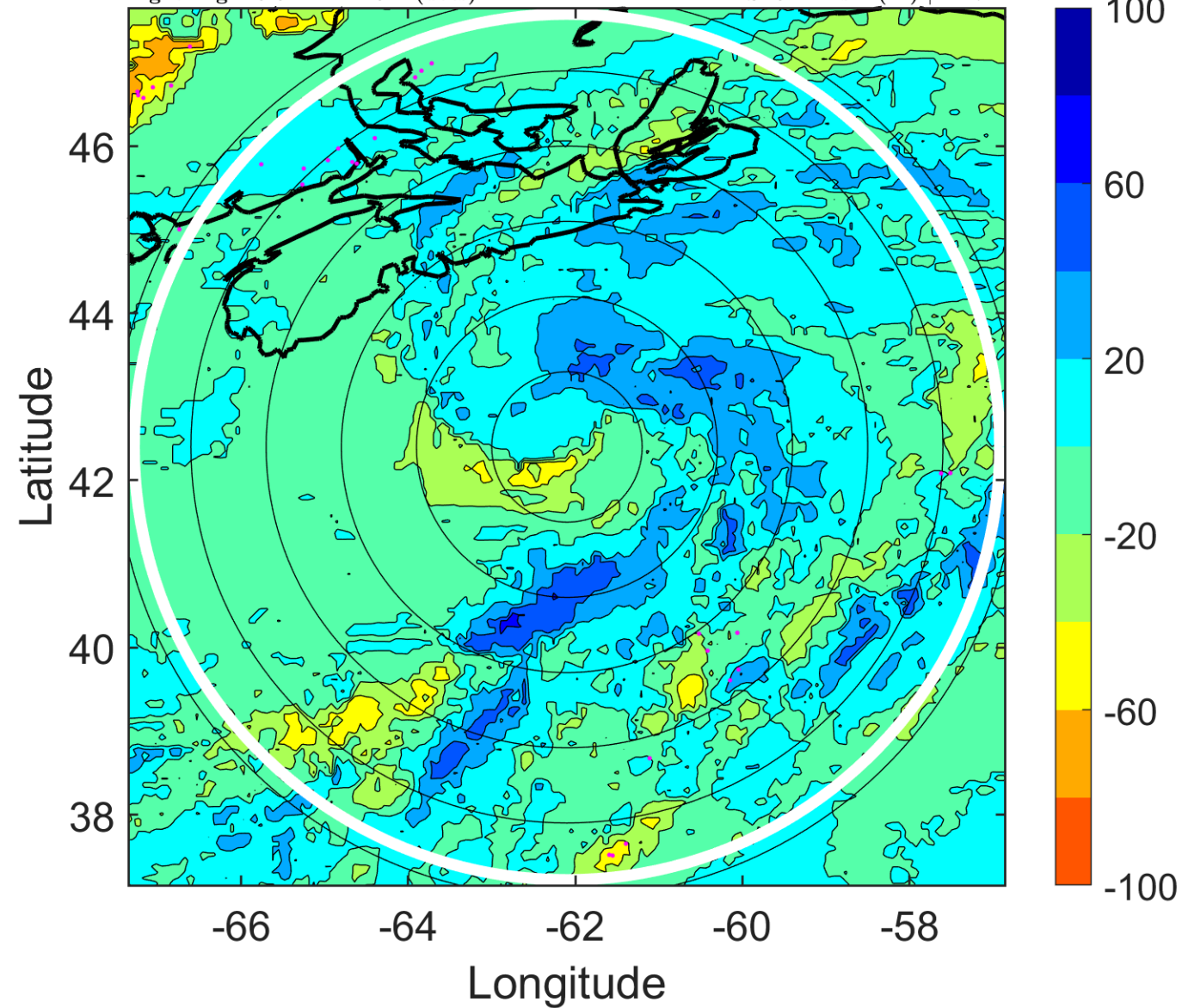
Δ t: 2006071800 (19.9 LT) - 2006071718 (13.8 LT)

Lightning: 19.9 LT \pm 1.5 h (dots)

PT: LLCP | EA: INACT

02L (UNNAMED) | 40 kt TS

S: 9.1 m s⁻¹ (M) | H: 74°



IR BT & Lightning

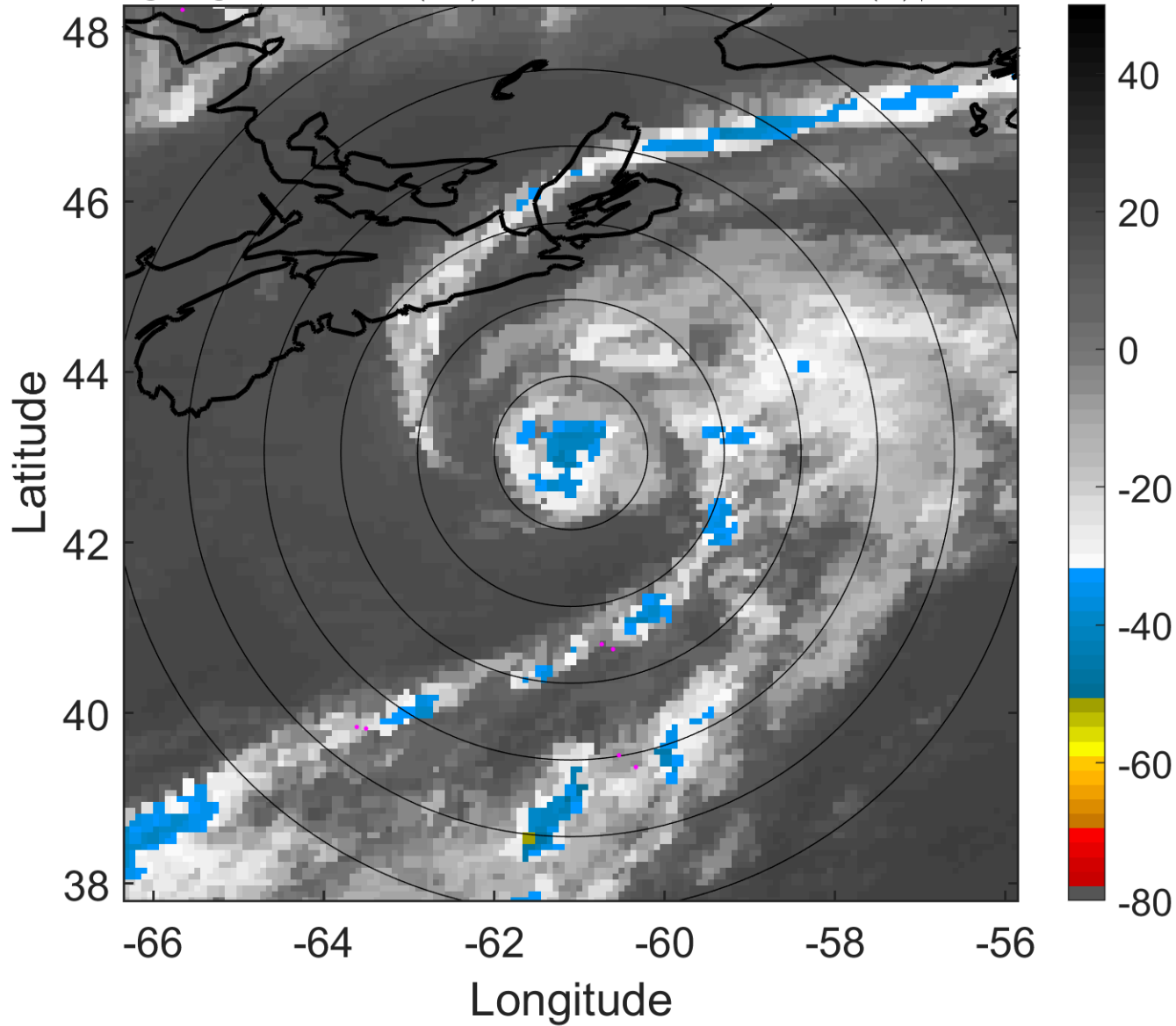
t: 2006071803 (22.9 LT)

Lightning: 22.9 LT \pm 1.5 h (dots)

PT: LLCP | EA: INACT

02L (UNNAMED) | 37.5 kt TS

S: 7.8 m s⁻¹ (M) | H: 96.5°



6-h IR BT Differences & Lightning

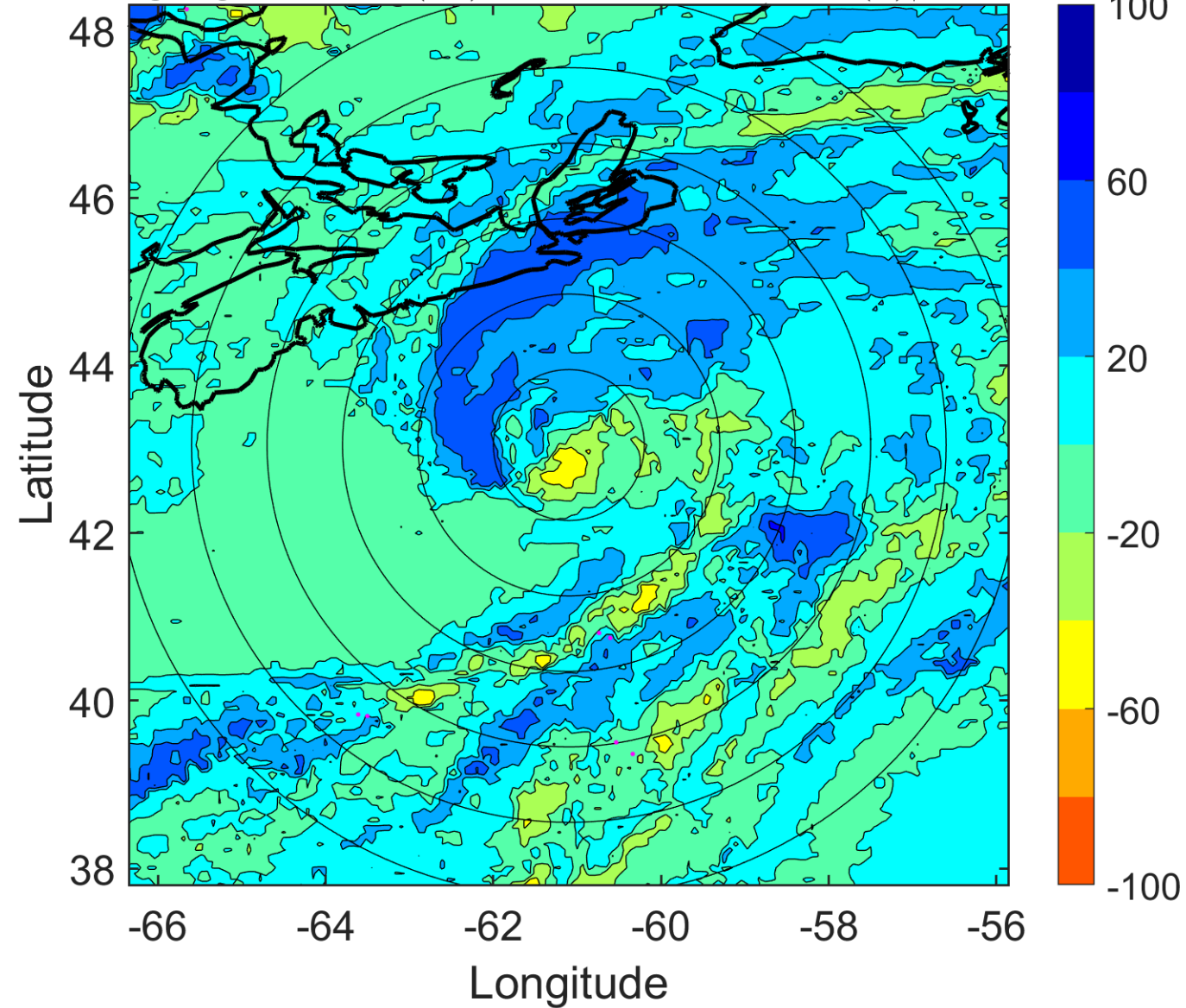
Δ t: 2006071803 (22.9 LT) - 2006071721 (16.8 LT)

Lightning: 22.9 LT \pm 1.5 h (dots)

PT: LLCP | EA: INACT

02L (UNNAMED) | 37.5 kt TS

S: 7.8 m s⁻¹ (M) | H: 96.5°



IR BT & Lightning

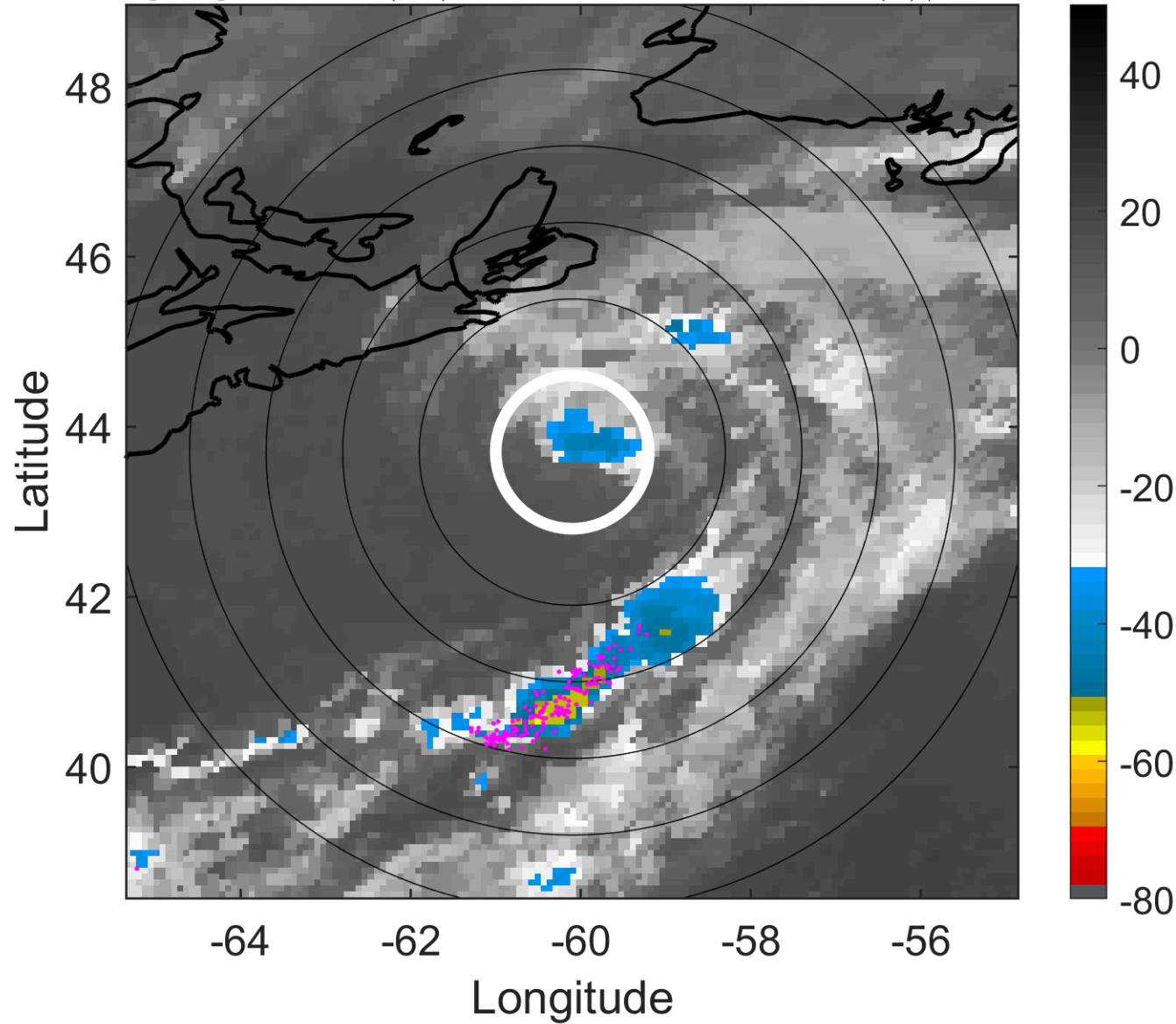
t: 2006071806 (2 LT)

Lightning: 2 LT \pm 1.5 h (dots)

PT: LLWP | EA: INACT

02L (UNNAMED) | 35 kt TS

S: 6.6 m s⁻¹ (M) | H: 119°



6-h IR BT Differences & Lightning

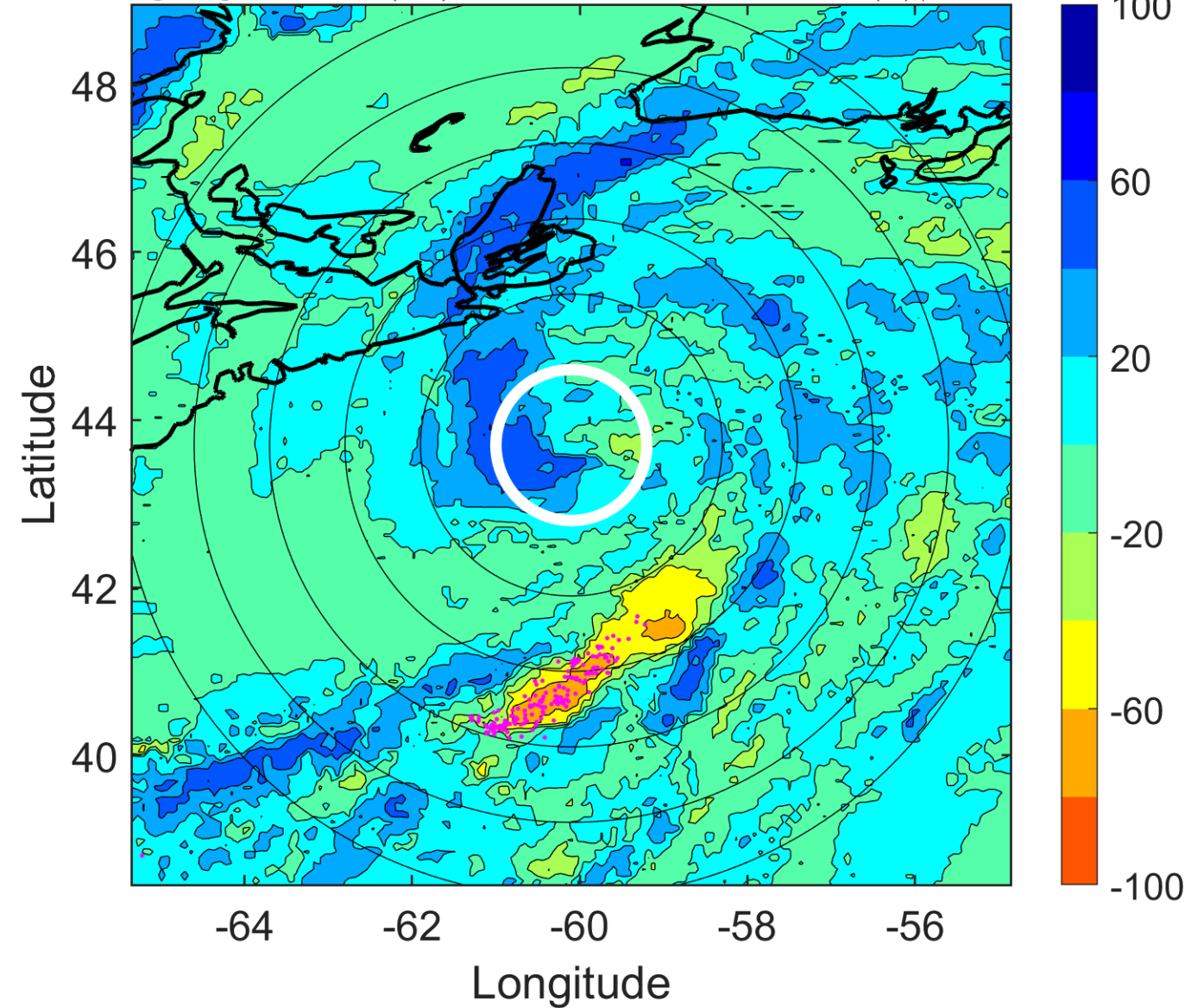
Δ t: 2006071806 (2 LT) - 2006071800 (19.9 LT)

Lightning: 2 LT \pm 1.5 h (dots)

PT: LLWP | EA: INACT

02L (UNNAMED) | 35 kt TS

S: 6.6 m s⁻¹ (M) | H: 119°



IR BT & Lightning

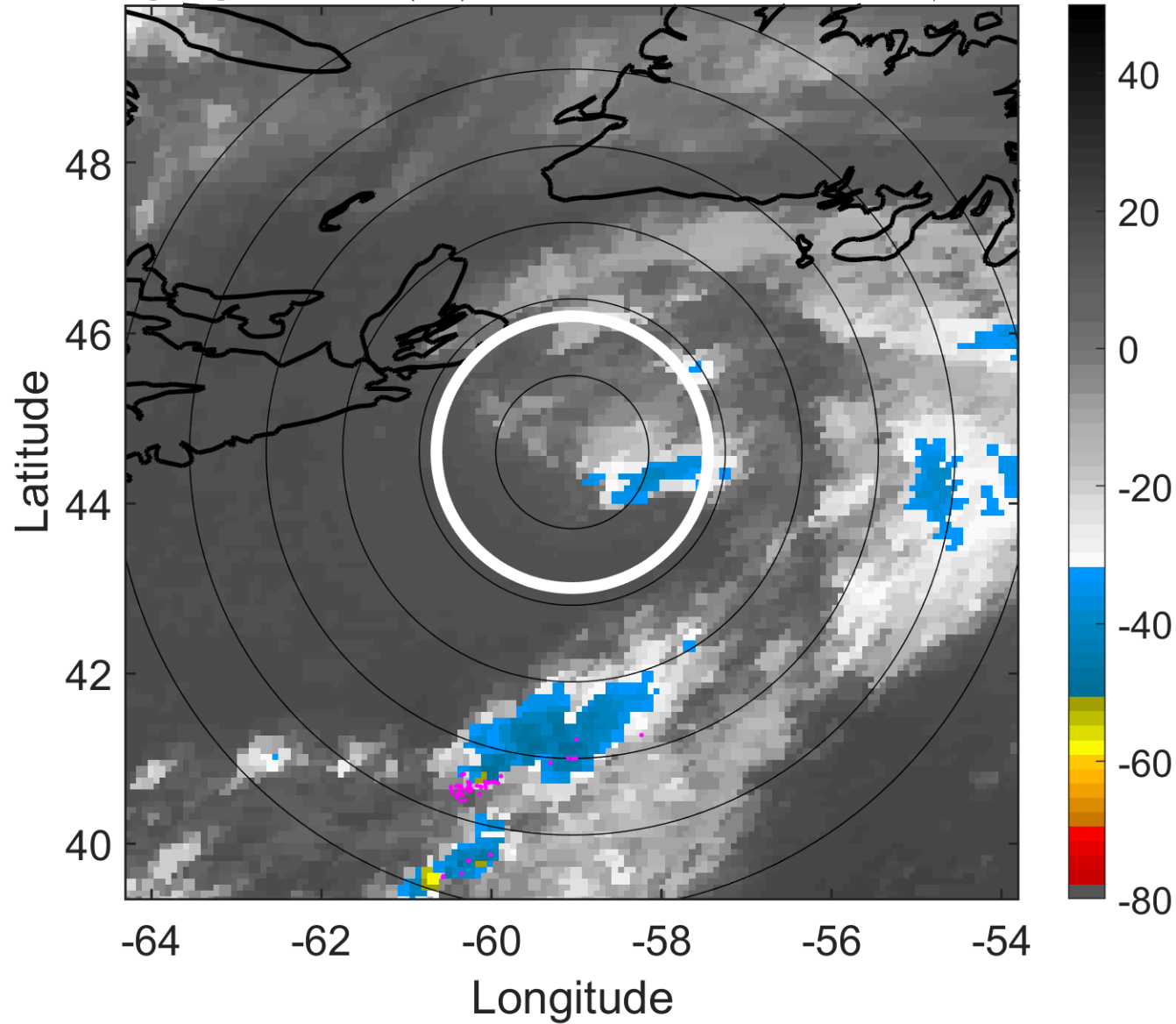
t: 2006071809 (5.1 LT)

Lightning: 5.1 LT \pm 1.5 h (dots)

PT: LLWP | EA: INACT

02L (UNNAMED) | 32.5 kt TD

S: null | H: null



6-h IR BT Differences & Lightning

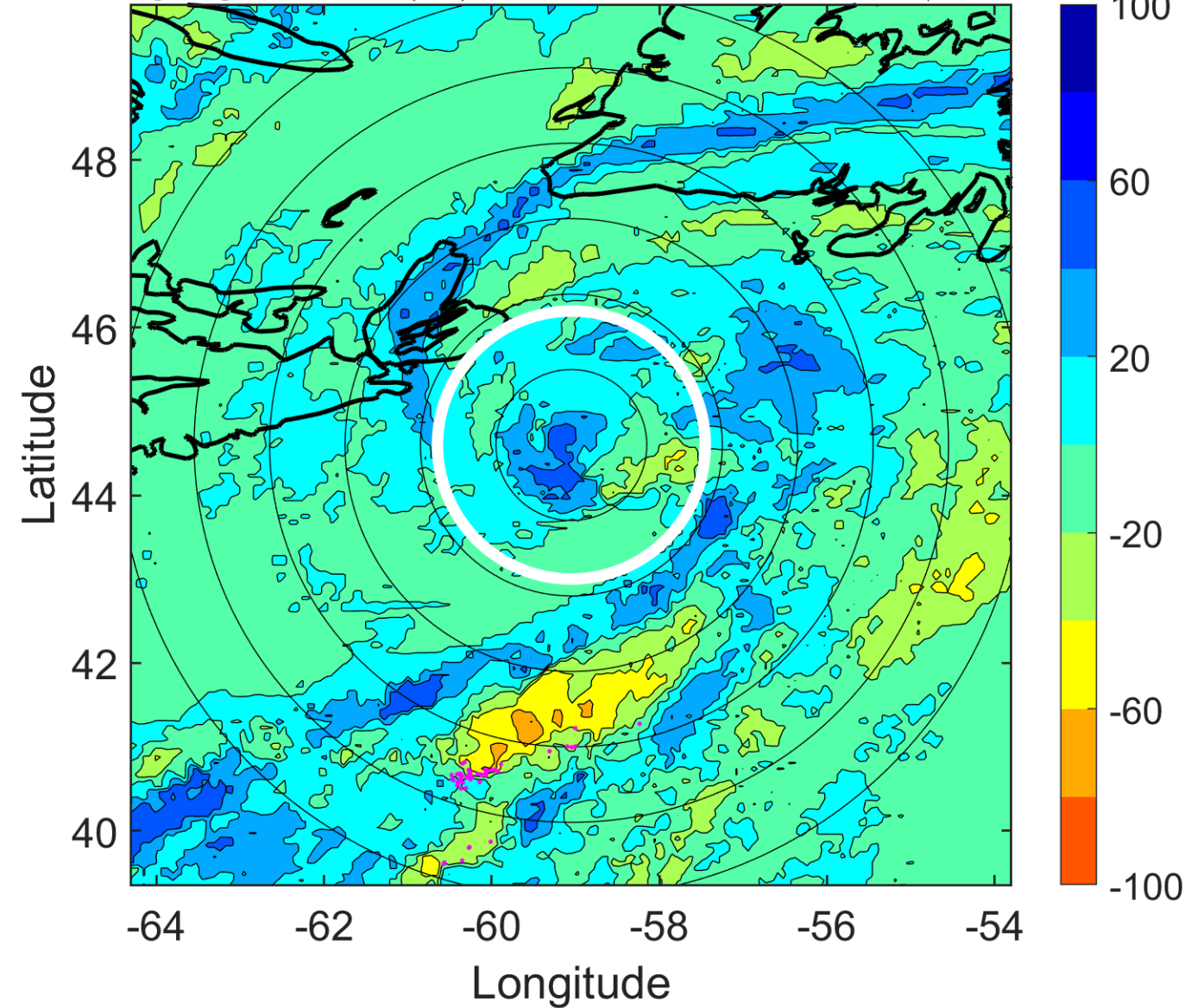
Δ t: 2006071809 (5.1 LT) - 2006071803 (22.9 LT)

Lightning: 5.1 LT \pm 1.5 h (dots)

PT: LLWP | EA: INACT

02L (UNNAMED) | 32.5 kt TD

S: null | H: null



IR BT & Lightning

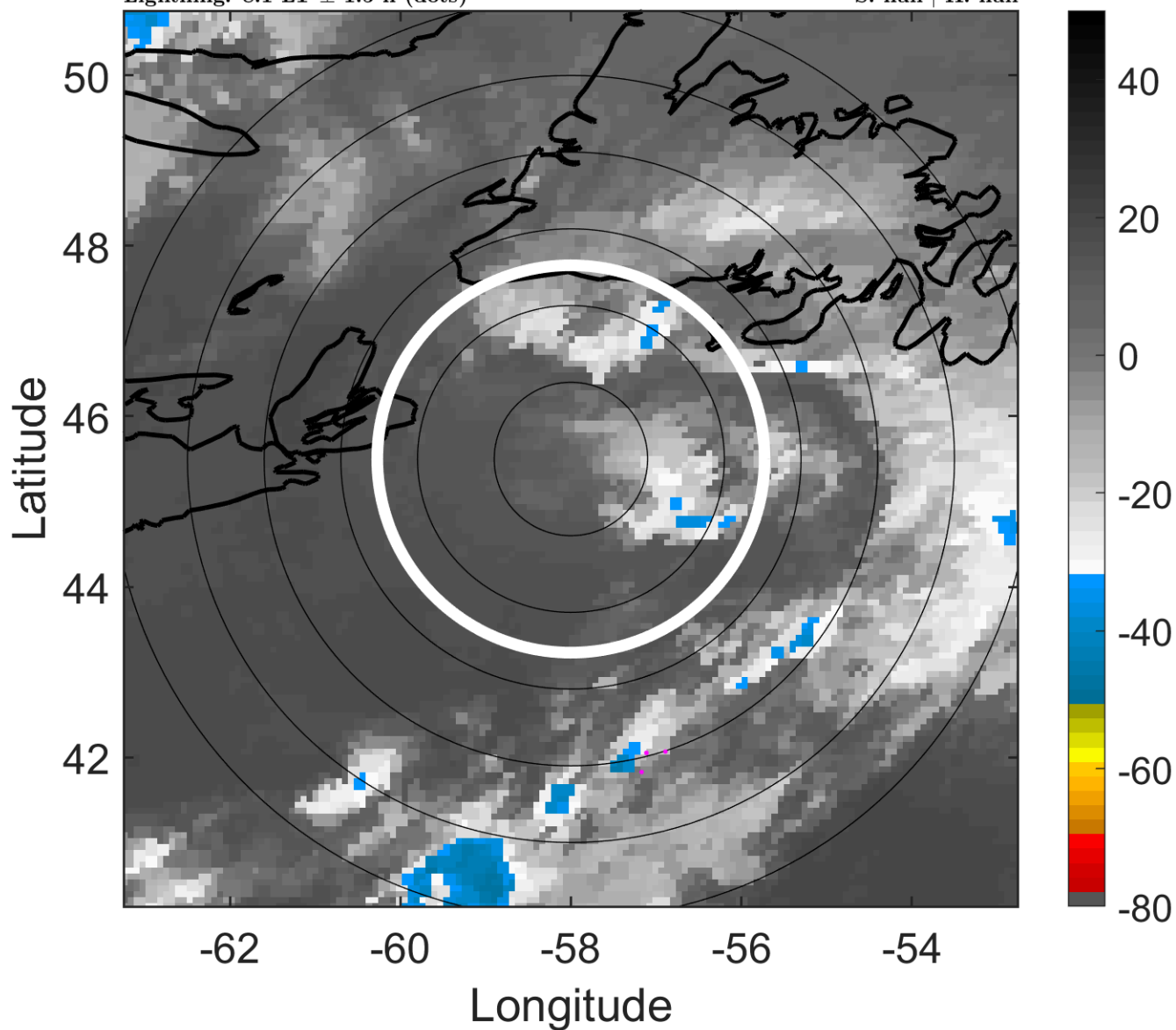
t: 2006071812 (8.1 LT)

Lightning: 8.1 LT \pm 1.5 h (dots)

PT: LLWP | EA: INACT

02L (UNNAMED) | 30 kt LO

S: null | H: null



6-h IR BT Differences & Lightning

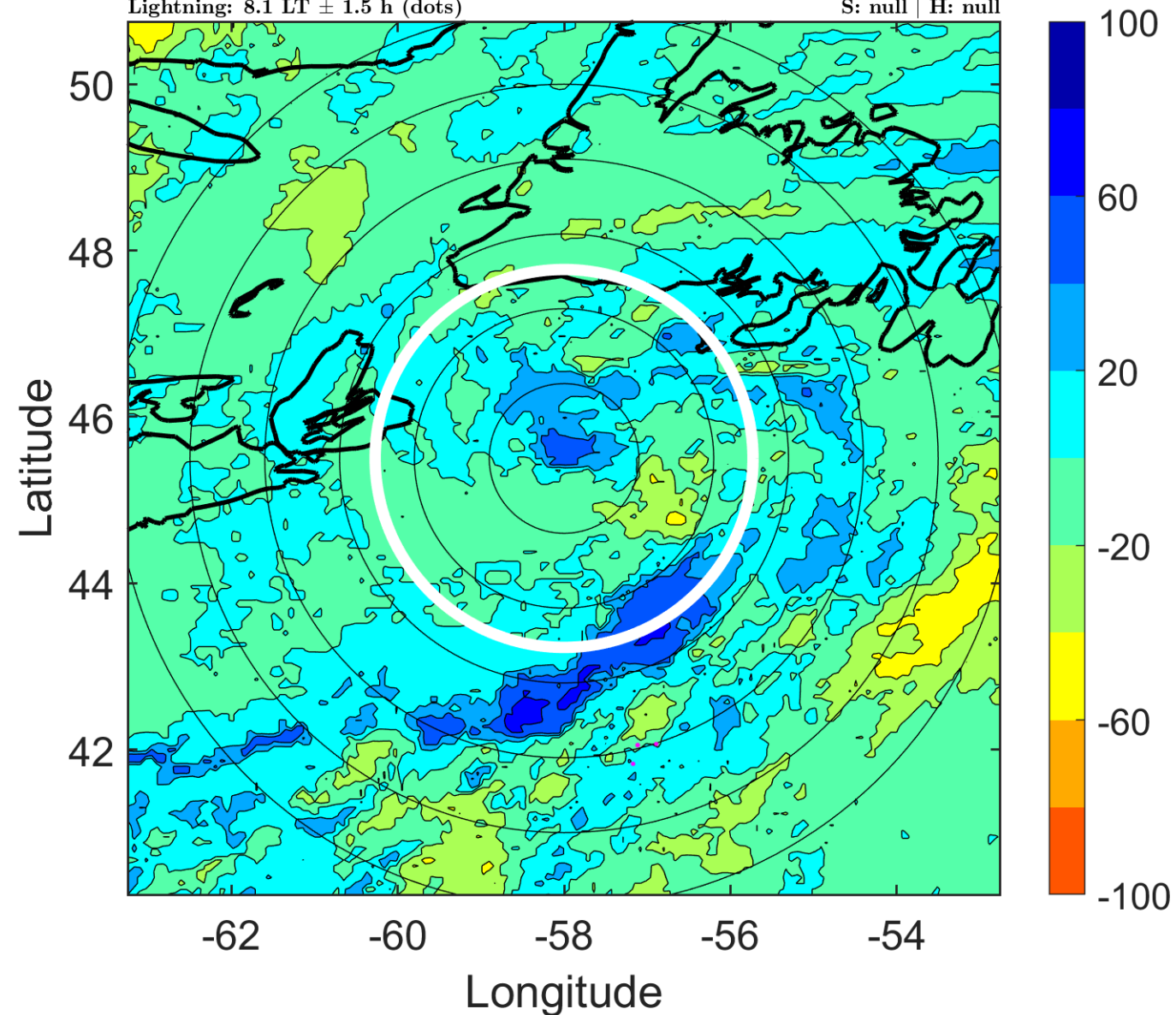
Δ t: 2006071812 (8.1 LT) - 2006071806 (2 LT)

Lightning: 8.1 LT \pm 1.5 h (dots)

PT: LLWP | EA: INACT

02L (UNNAMED) | 30 kt LO

S: null | H: null



IR BT & Lightning

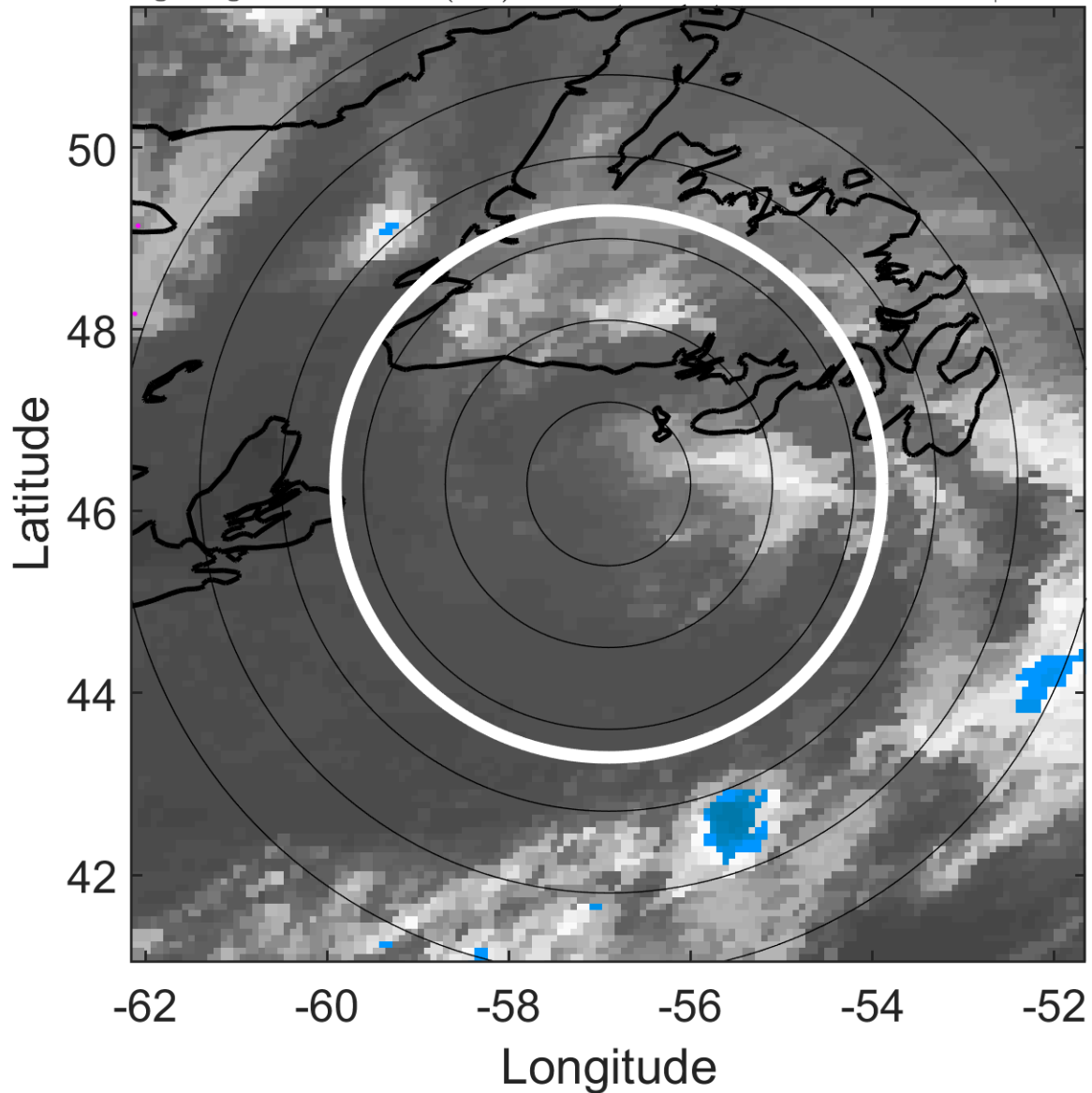
t: 2006071815 (11.2 LT)

Lightning: 11.2 LT \pm 1.5 h (dots)

PT: LLWP | EA: INACT

02L (UNNAMED) | 27.5 kt LO

S: null | H: null



6-h IR BT Differences & Lightning

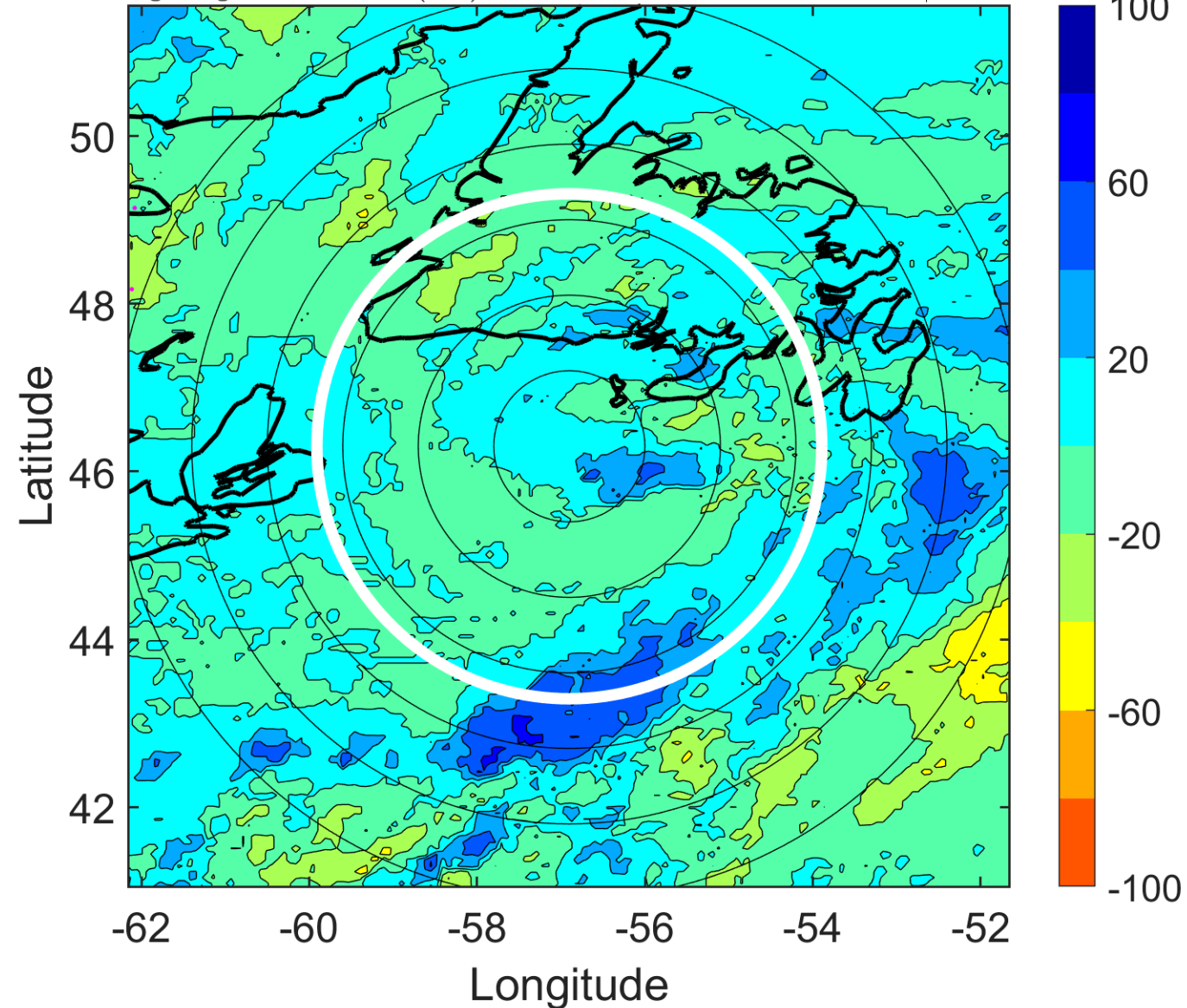
Δ t: 2006071815 (11.2 LT) - 2006071809 (5.1 LT)

Lightning: 11.2 LT \pm 1.5 h (dots)

PT: LLWP | EA: INACT

02L (UNNAMED) | 27.5 kt LO

S: null | H: null



IR BT & Lightning

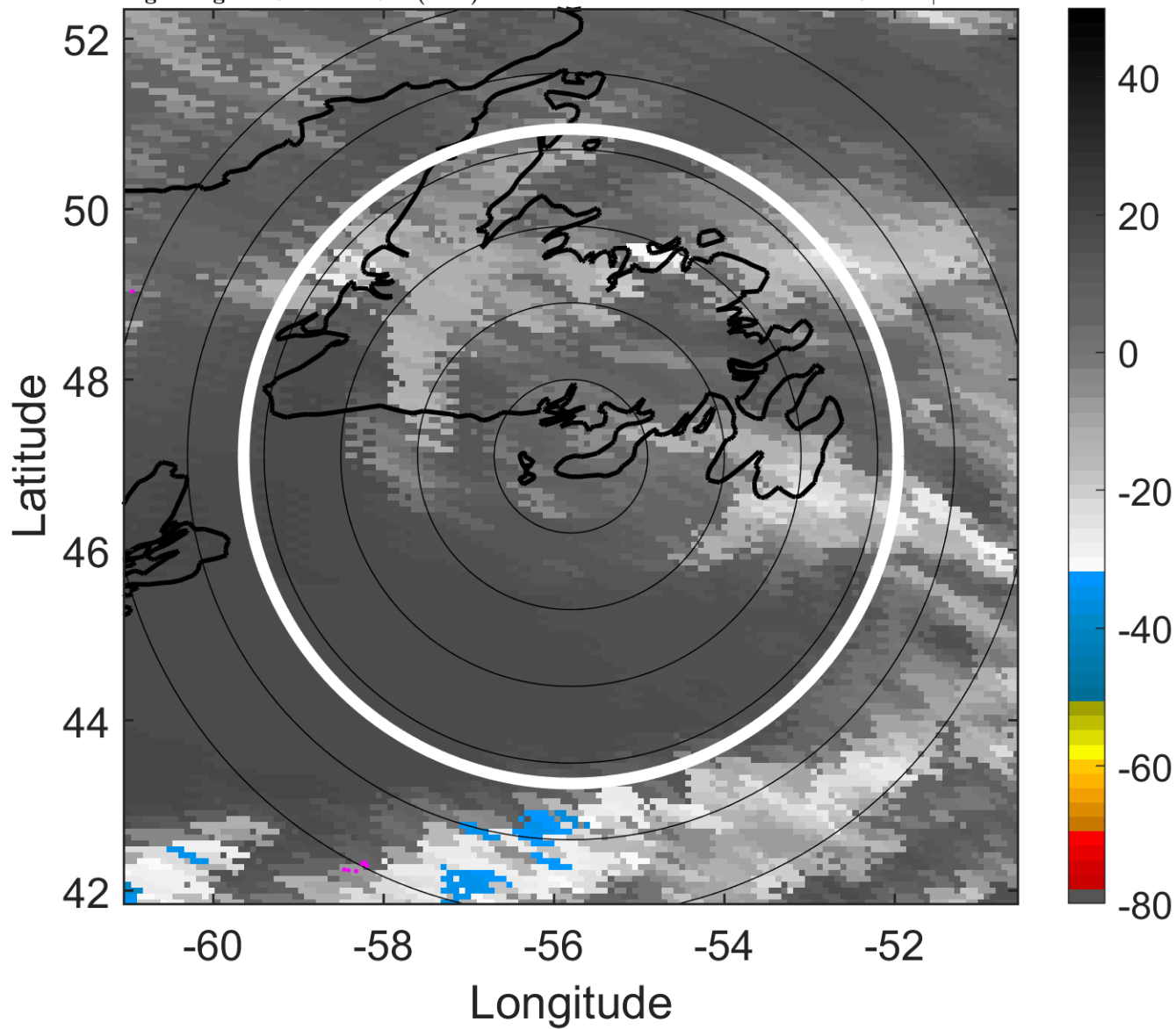
t: 2006071818 (14.3 LT)

Lightning: 14.3 LT \pm 1.5 h (dots)

PT: LLWP | EA: INACT

02L (UNNAMED) | 25 kt LO

S: null | H: null



6-h IR BT Differences & Lightning

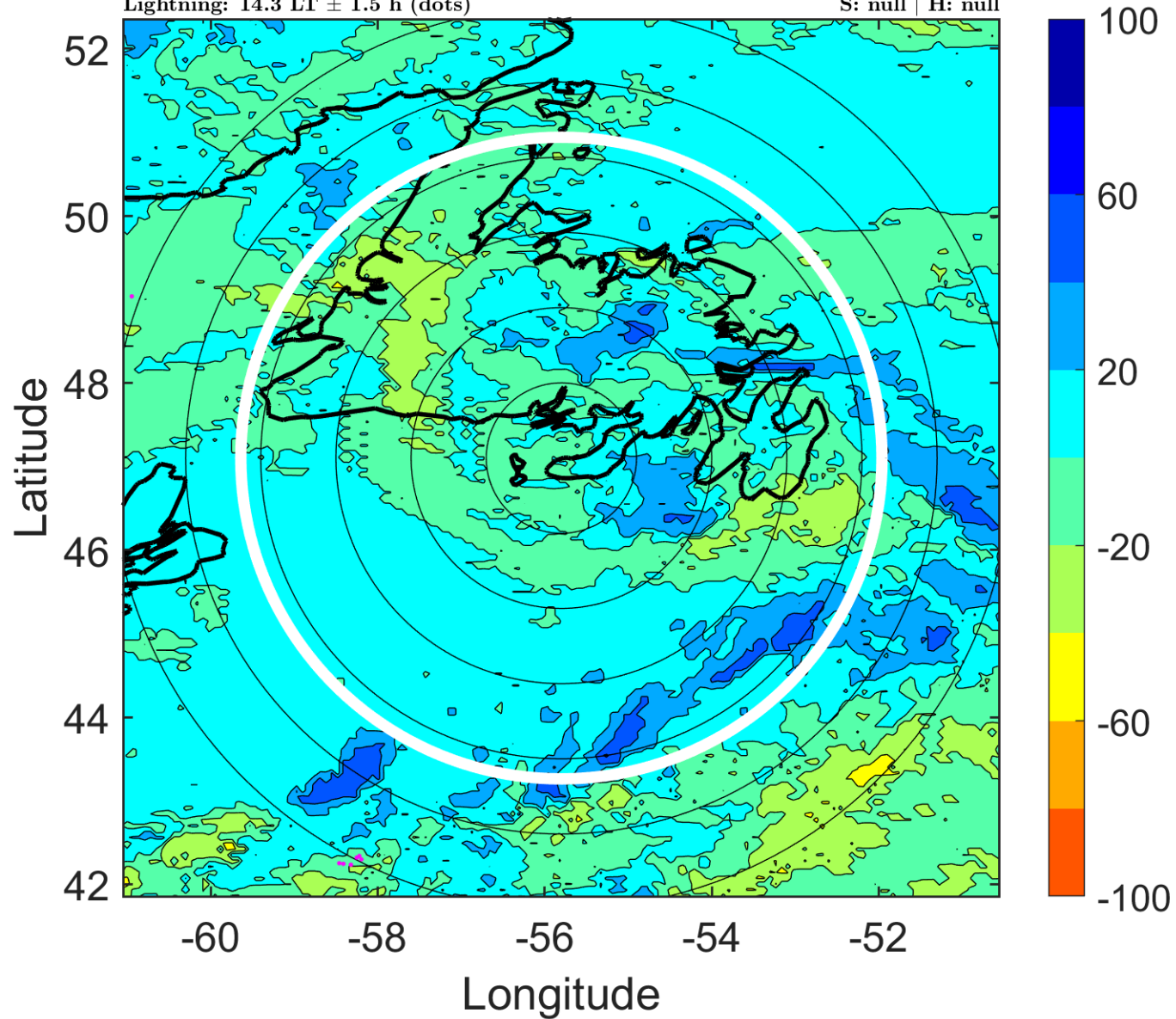
Δ t: 2006071818 (14.3 LT) - 2006071812 (8.1 LT)

Lightning: 14.3 LT \pm 1.5 h (dots)

PT: LLWP | EA: INACT

02L (UNNAMED) | 25 kt LO

S: null | H: null



IR BT & Lightning

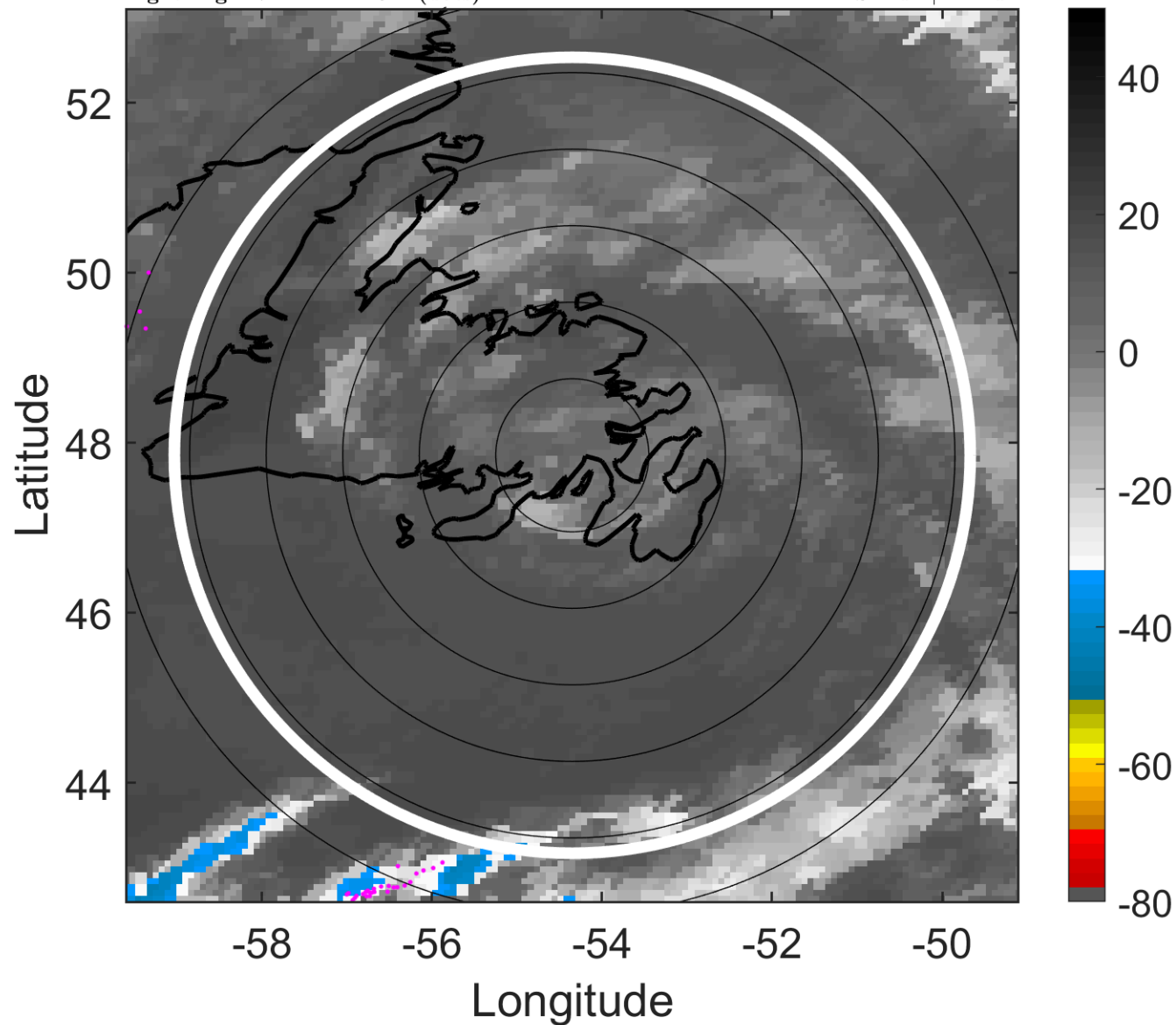
t: 2006071821 (17.4 LT)

Lightning: 17.4 LT \pm 1.5 h (dots)

PT: LLWP | EA: INACT

02L (UNNAMED) | 25 kt LO

S: null | H: null



6-h IR BT Differences & Lightning

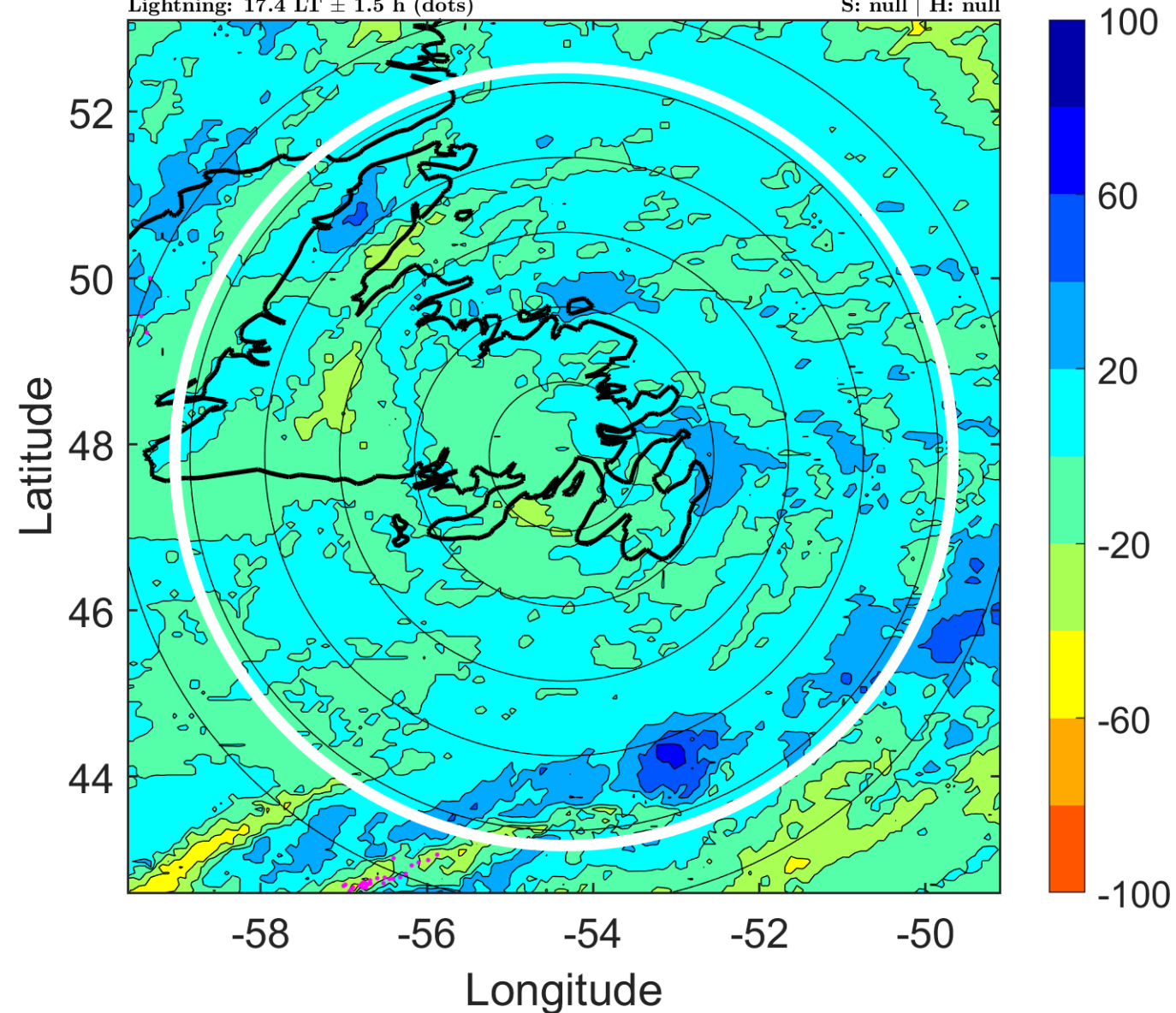
Δ t: 2006071821 (17.4 LT) - 2006071815 (11.2 LT)

Lightning: 17.4 LT \pm 1.5 h (dots)

PT: LLWP | EA: INACT

02L (UNNAMED) | 25 kt LO

S: null | H: null



IR BT & Lightning

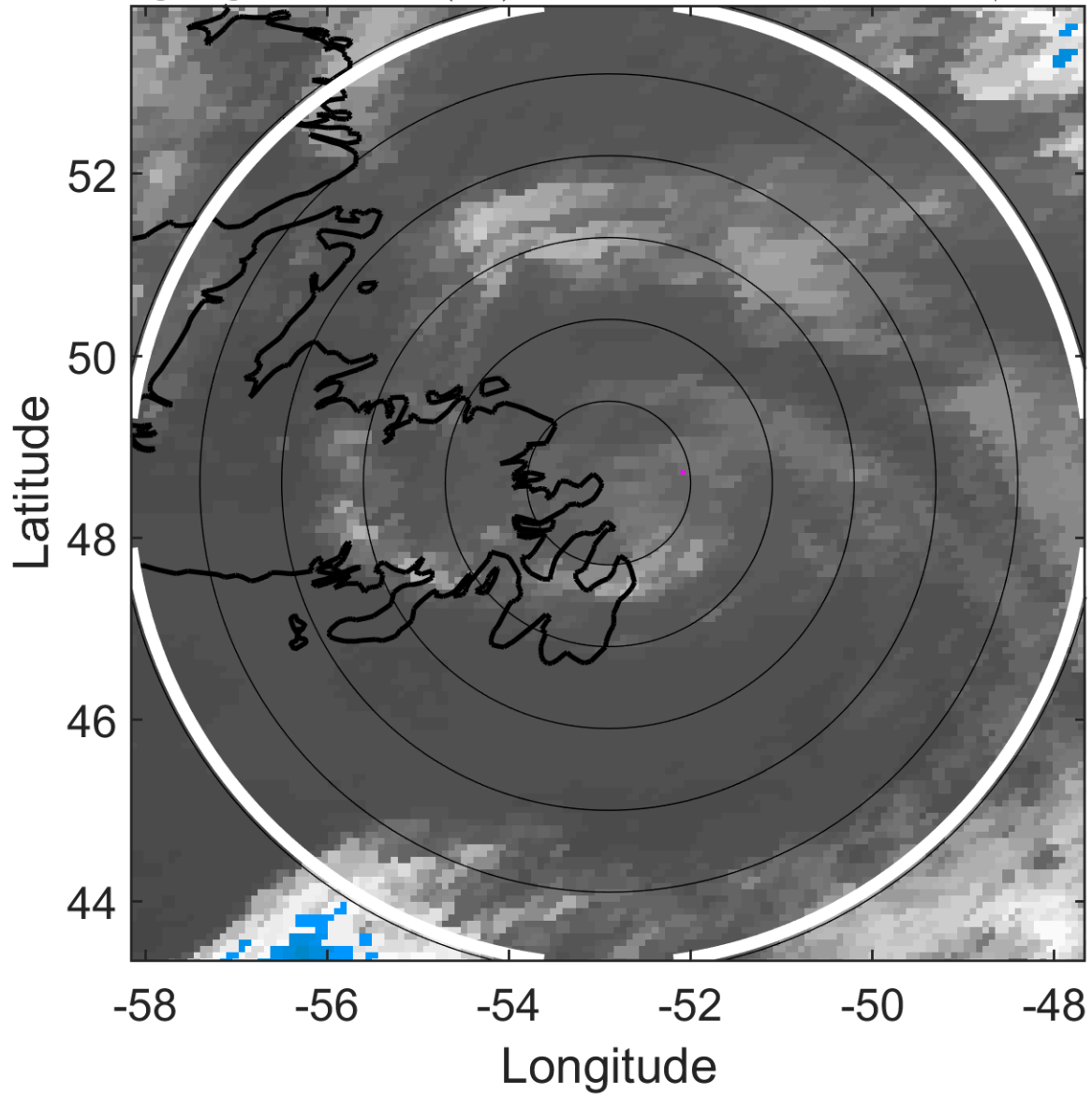
t: 2006071900 (20.5 LT)

Lightning: 20.5 LT \pm 1.5 h (dots)

PT: LLWP | EA: INACT

02L (UNNAMED) | 25 kt LO

S: null | H: null



6-h IR BT Differences & Lightning

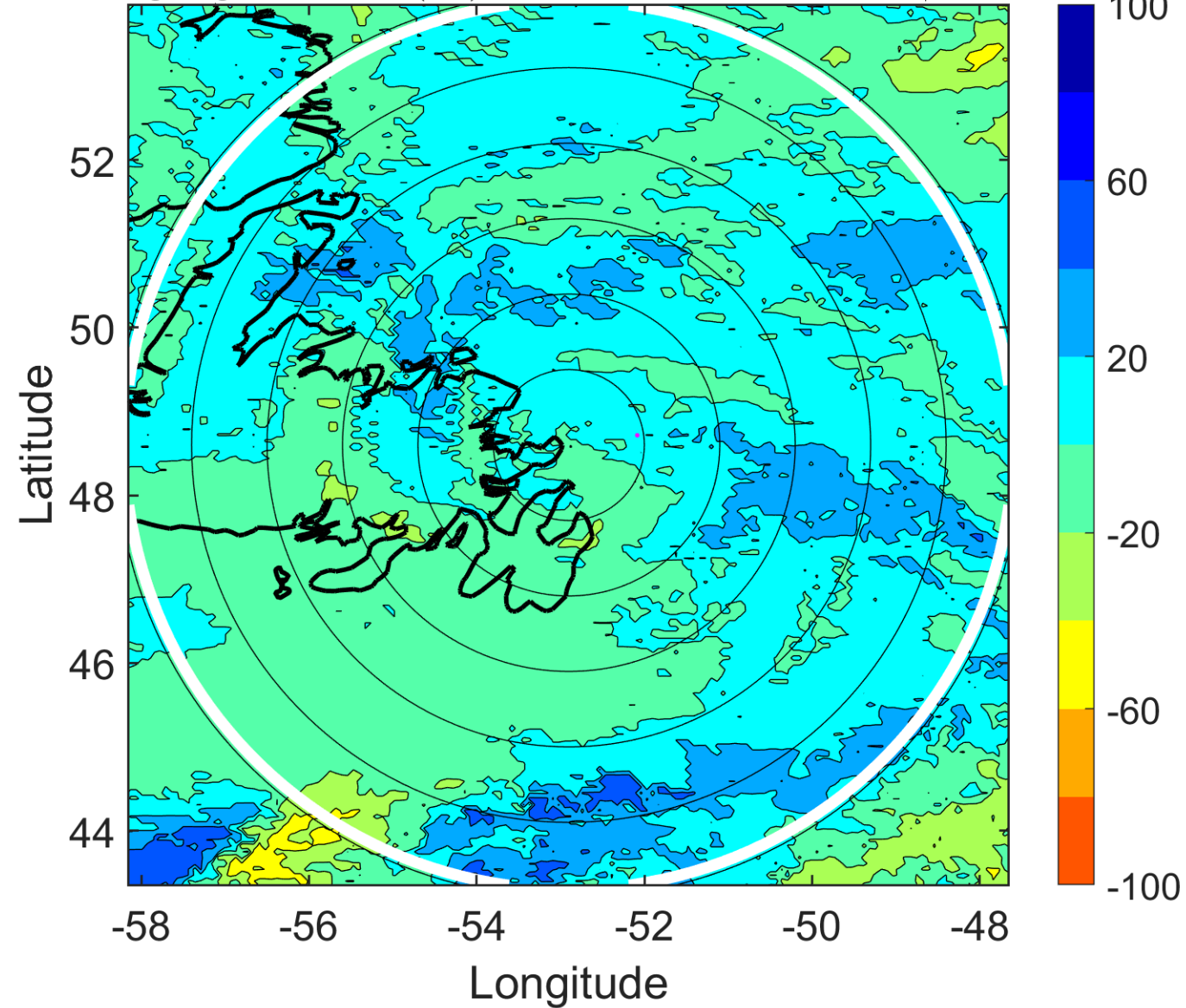
Δ t: 2006071900 (20.5 LT) - 2006071818 (14.3 LT)

Lightning: 20.5 LT \pm 1.5 h (dots)

PT: LLWP | EA: INACT

02L (UNNAMED) | 25 kt LO

S: null | H: null



IR BT & Lightning

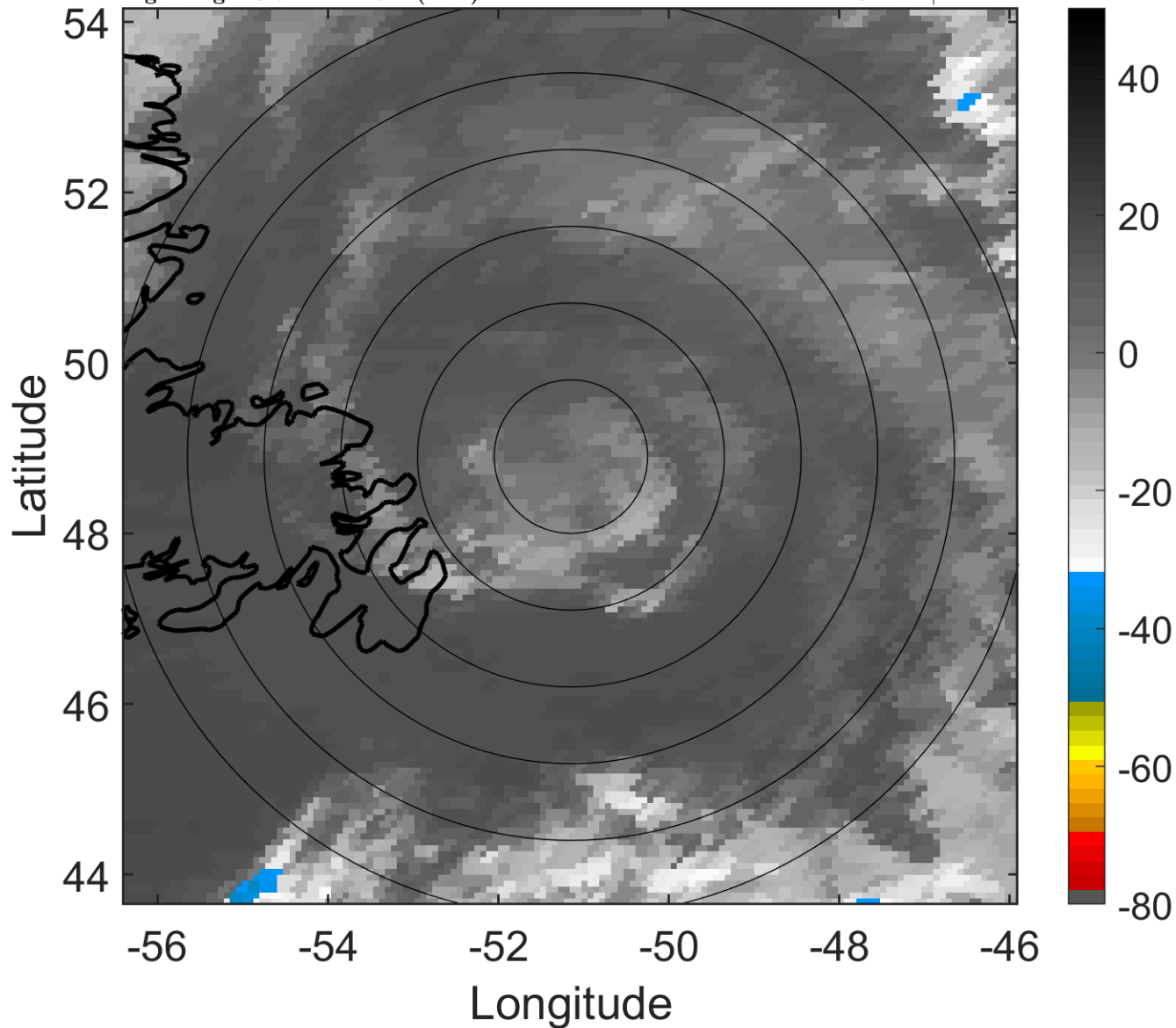
t: 2006071903 (23.6 LT)

Lightning: 23.6 LT \pm 1.5 h (dots)

PT: LLWP | EA: INACT

02L (UNNAMED) | 25 kt LO

S: null | H: null



6-h IR BT Differences & Lightning

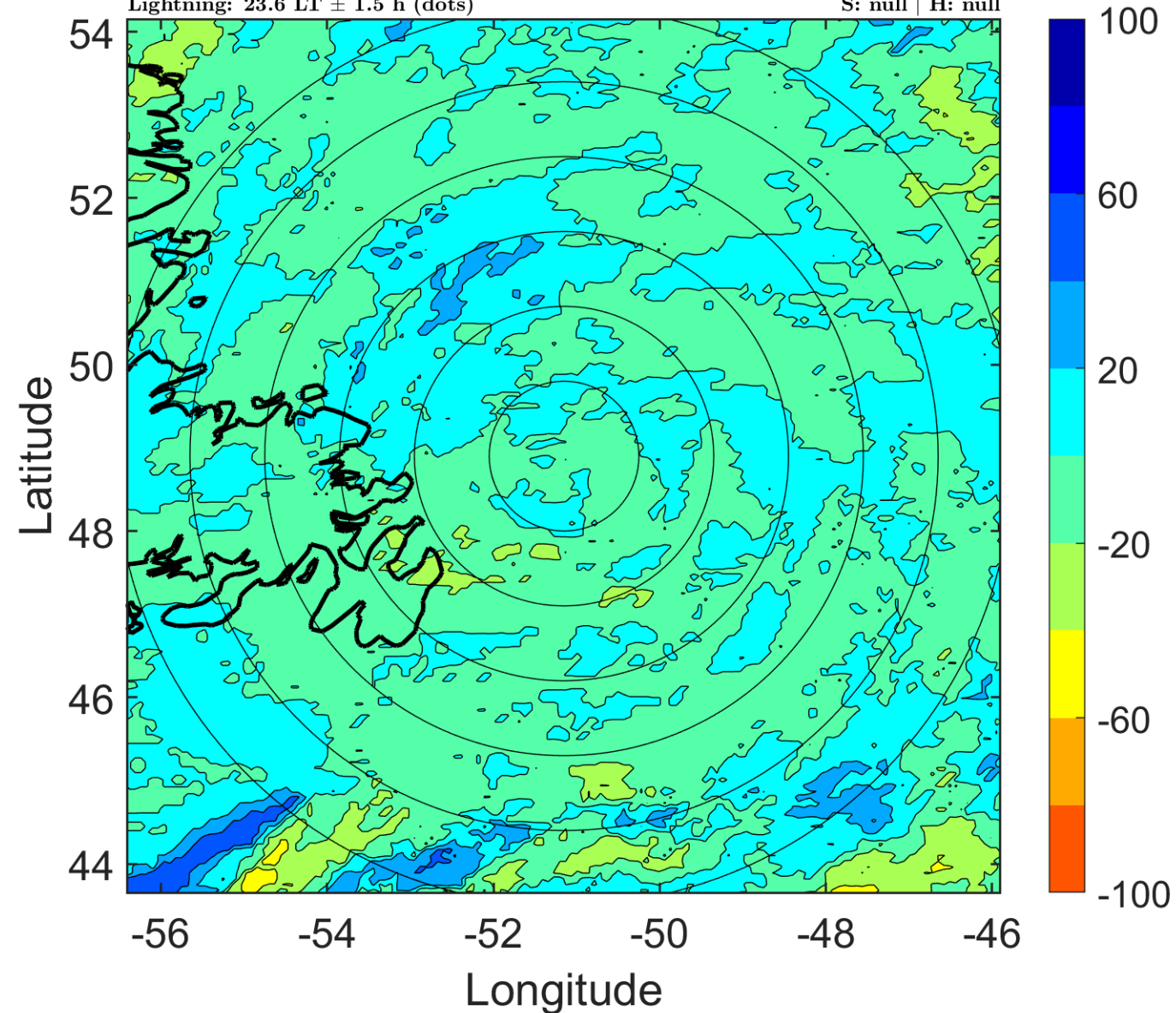
Δ t: 2006071903 (23.6 LT) - 2006071821 (17.4 LT)

Lightning: 23.6 LT \pm 1.5 h (dots)

PT: LLWP | EA: INACT

02L (UNNAMED) | 25 kt LO

S: null | H: null



IR BT & Lightning

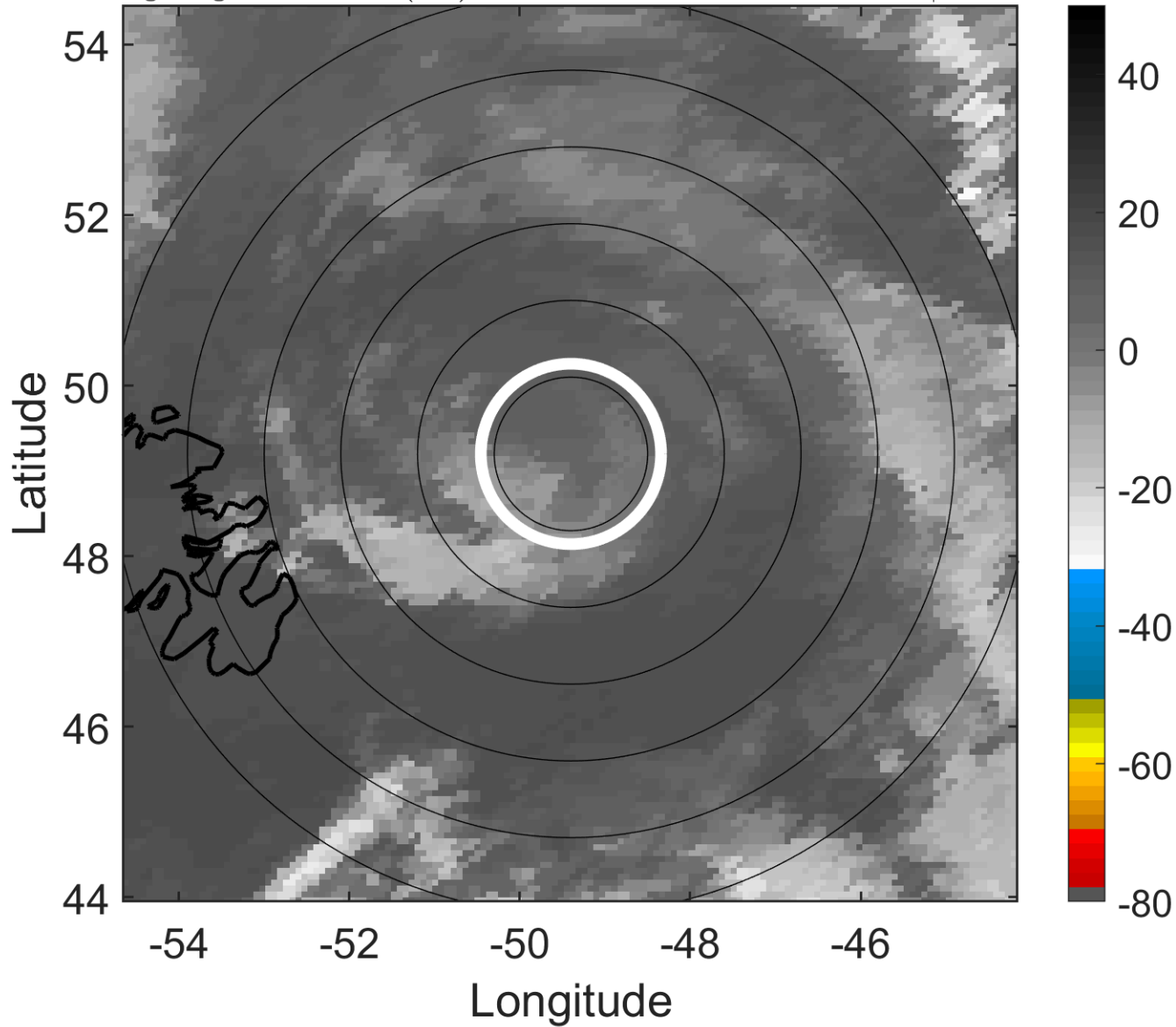
t: 2006071906 (2.7 LT)

Lightning: 2.7 LT \pm 1.5 h (dots)

PT: NP | EA: INACT

02L (UNNAMED) | 25 kt LO

S: null | H: null



6-h IR BT Differences & Lightning

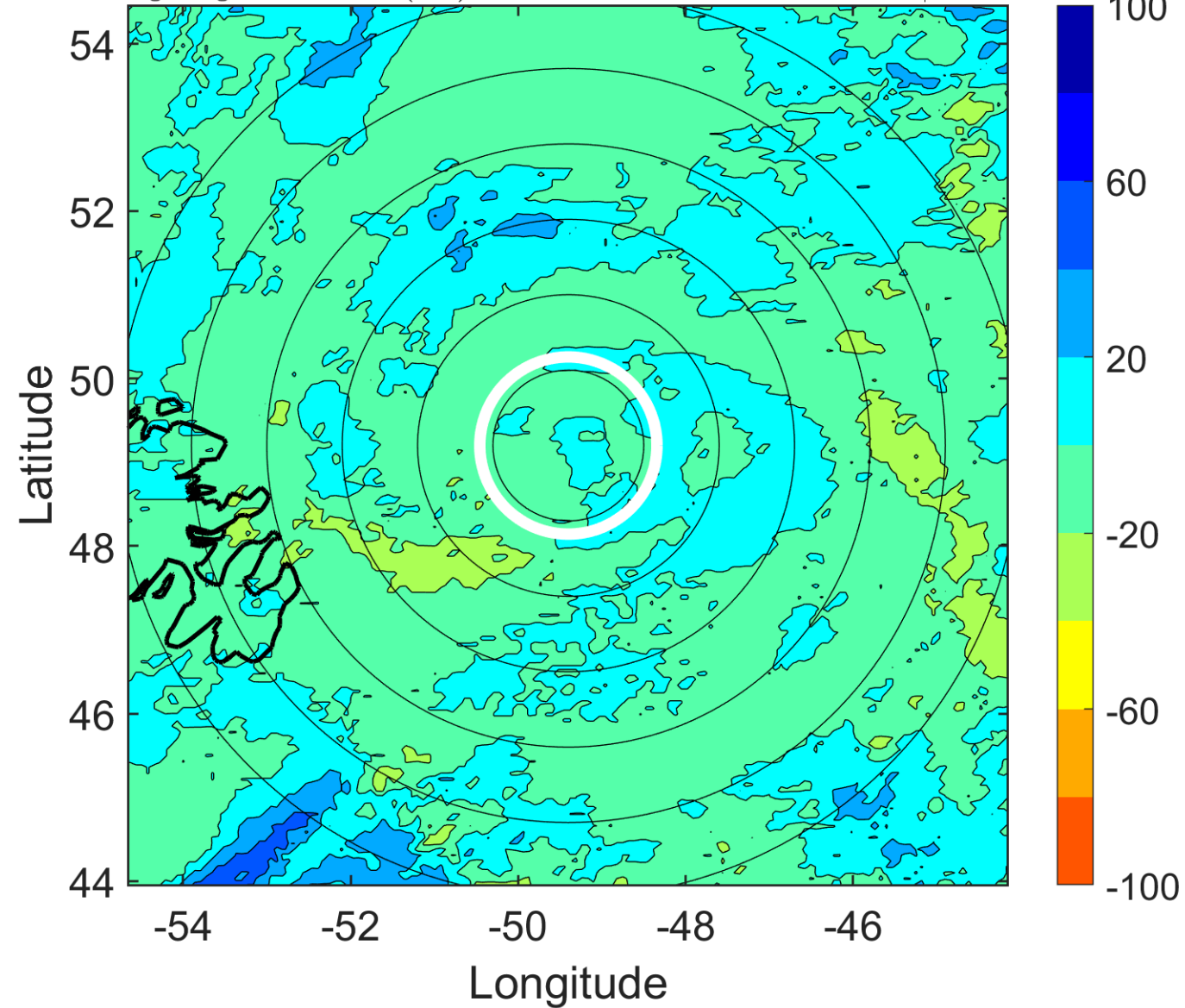
Δ t: 2006071906 (2.7 LT) - 2006071900 (20.5 LT)

Lightning: 2.7 LT \pm 1.5 h (dots)

PT: NP | EA: INACT

02L (UNNAMED) | 25 kt LO

S: null | H: null



IR BT & Lightning

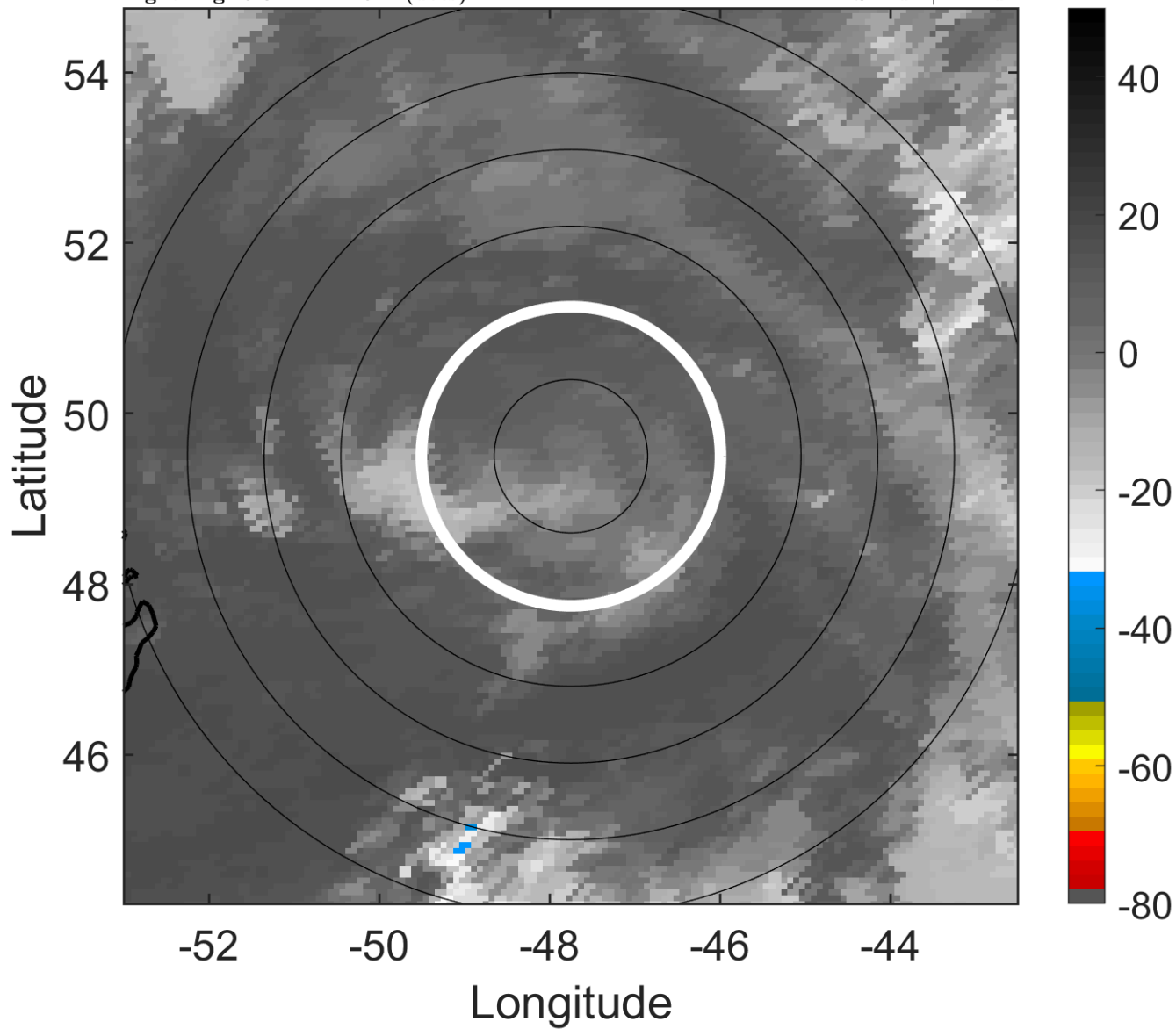
t: 2006071909 (5.8 LT)

Lightning: 5.8 LT \pm 1.5 h (dots)

PT: NP | EA: INACT

02L (UNNAMED) | 25 kt LO

S: null | H: null



6-h IR BT Differences & Lightning

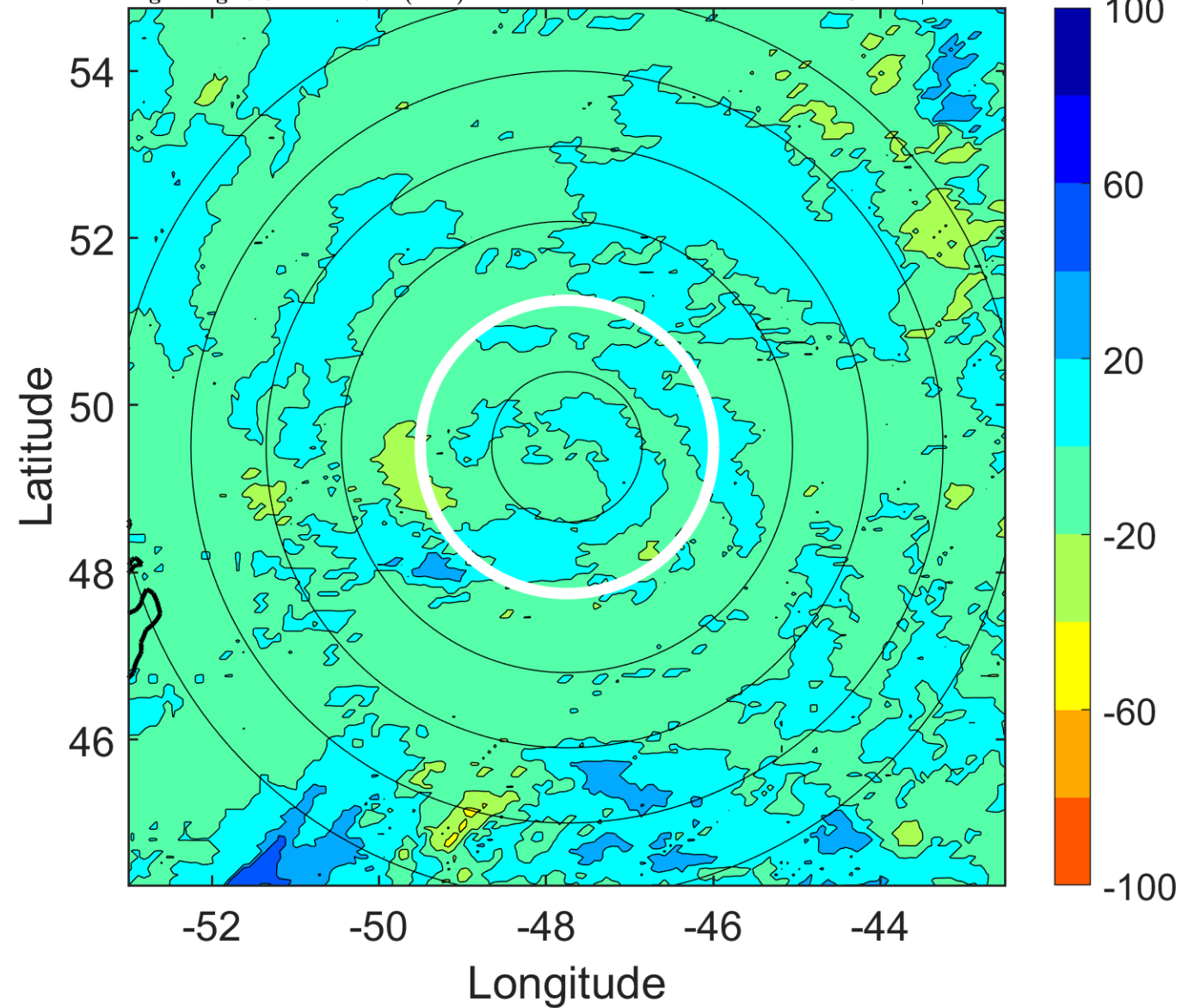
Δ t: 2006071909 (5.8 LT) - 2006071903 (23.6 LT)

Lightning: 5.8 LT \pm 1.5 h (dots)

PT: NP | EA: INACT

02L (UNNAMED) | 25 kt LO

S: null | H: null



IR BT & Lightning

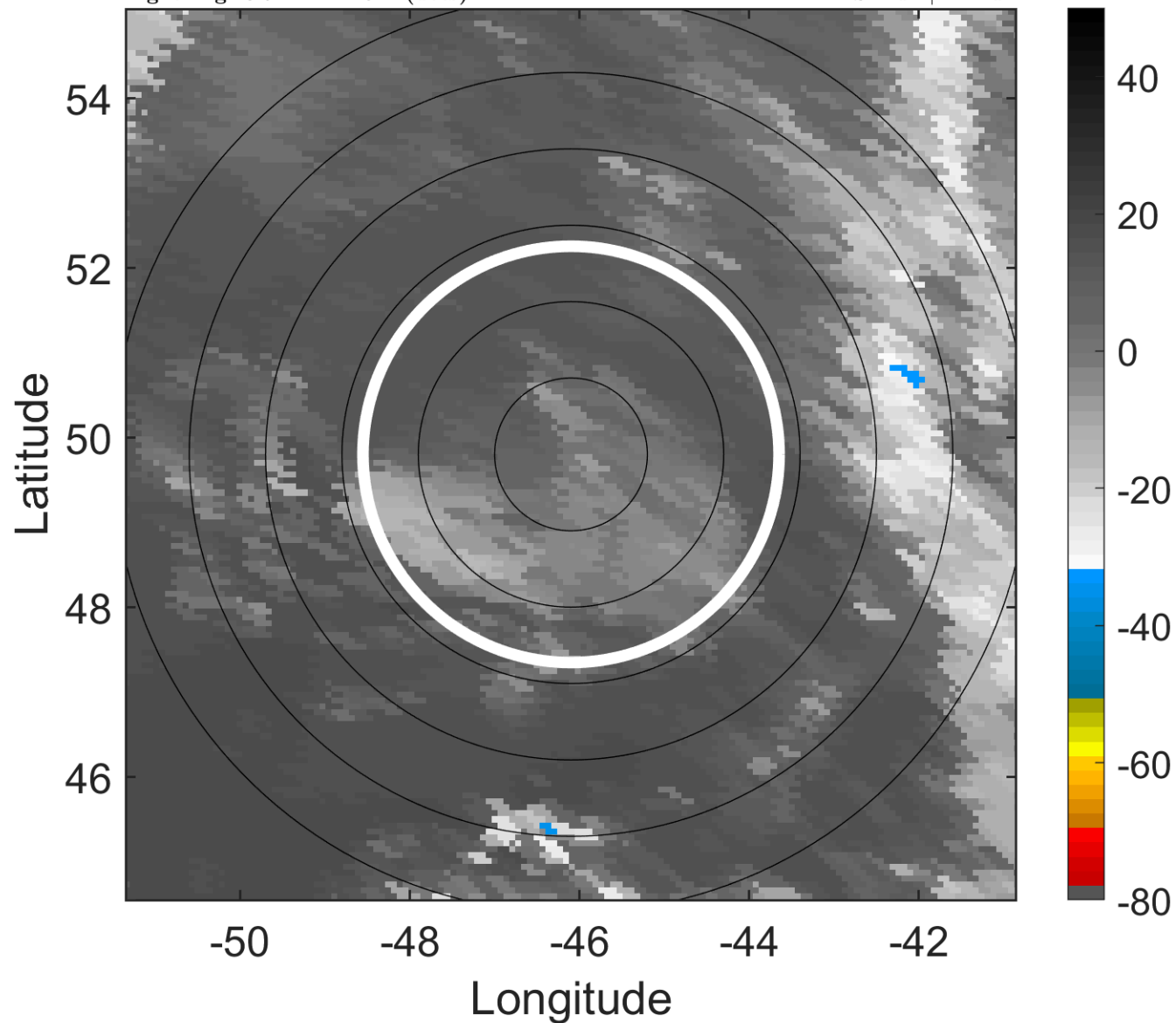
t: 2006071912 (8.9 LT)

Lightning: 8.9 LT \pm 1.5 h (dots)

PT: NP | EA: INACT

02L (UNNAMED) | 25 kt LO

S: null | H: null



6-h IR BT Differences & Lightning

Δ t: 2006071912 (8.9 LT) - 2006071906 (2.7 LT)

Lightning: 8.9 LT \pm 1.5 h (dots)

PT: NP | EA: INACT

02L (UNNAMED) | 25 kt LO

S: null | H: null

